



PARTS CATALOG

OUTBOARDS SEC C STEERING HANDLES AND BARS

SERIAL NUMBER

POWER STEERING/ TILLER HANDLES/ SHIFT KITS Outboard (1985 and Below)

TABLE OF CONTENTS:

CO-PILOT REPLACEMENT ASSEMBLY	32
INSIDE STEERING BRACKET ASSEMBLY	14
INSIDE STEERING BRACKETS	8
PARTS INDEX	42
STEERING BRACKET ASSEMBLY	2
STEERING BRACKET ASSEMBLY	10
STEERING BRACKET ASSEMBLY (MERC 350-2 CYLINDER)	12
STEERING HANDLE ASSEMBLY	28
STEERING HANDLE ASSEMBLY	36
STEERING HANDLE ASSEMBLY	40
STEERING HANDLE ASSEMBLY, COMPLETE	4
STEERING HANDLE ASSEMBLY, COMPLETE	16
STEERING HANDLE ASSEMBLY, COMPLETE	20
STEERING HANDLE ASSEMBLY, COMPLETE	24

NOTE: Indented description indicate that these parts are included in preceding assembly.

AR = As Required

NSS = Not Sold Separate

OPT = Optional

NS = Not Shown

NOTE: Following symbols are located in **SYM** column.

● = [25262A 1] AND [29822A 1] STEERING HANDLE ASSEMBLIES ARE NO LONGER AVAILABLE.

■ = FOR REPLACEMENT--ORDER [36182A 1] STEERING HANDLE ASSEMBLY. COMPONENT PARTS ARE STILL STOCKED.

■ = FOR USE ON MERC 350 (2 CYLINDER) ENGINES ONLY. A-[34129A14] STEERING HANDLE ASSEMBLY IS NLA.

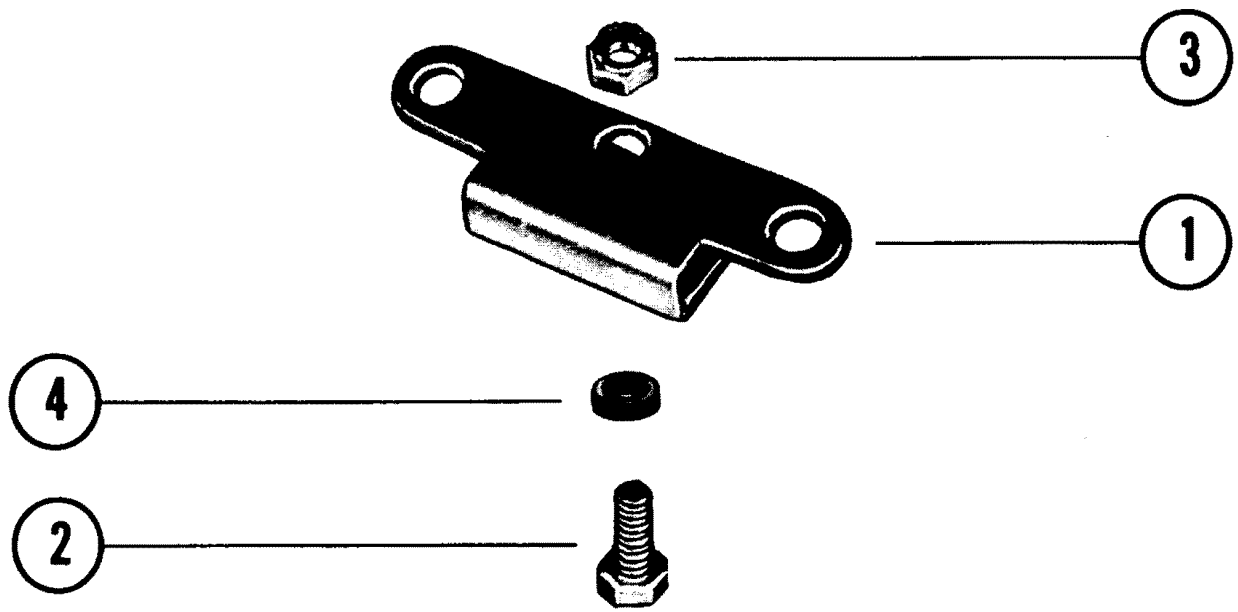
◇ = FOR USE ON MERC 350 (2-CYLINDER) SERIAL #1976427 THRU #2258863.

▲ = [48400A 1] IS NO LONGER AVAILABLE. ORDER [48400A 2] WHICH INCLUDES [52148A 1] CO-PILOT KIT.

THESE PARTS BOOKS/FICHE CARD ARE COPYRIGHTED AND MAY NOT BE DISTRIBUTED OR REPRODUCED IN ANY OTHER FORMAT BY ANYONE OTHER THAN MERCURY MARINE WITHOUT THE PRIOR WRITTEN CONSENT OF MERCURY MARINE.

THIS PAGE INTENTIONALLY LEFT BLANK

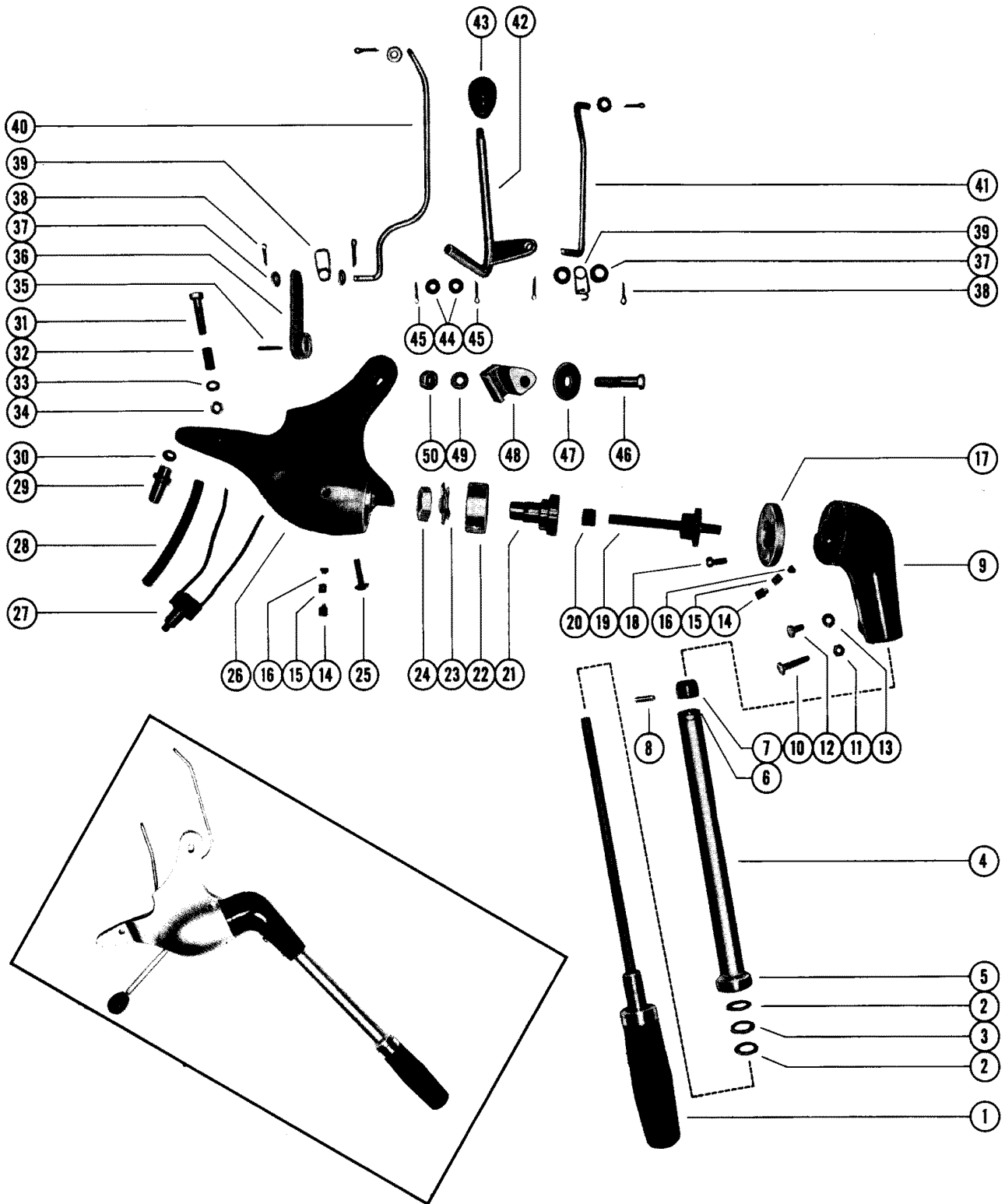
STEERING BRACKET ASSEMBLY



STEERING BRACKET ASSEMBLY

REF. NO.	PART NO.	SYM.	QTY.	DESCRIPTION
1	--3839A1		1,-	STEERING BRACKET ASSEMBLY
	--52992A1		-,1	STEERING BRACKET ASSEMBLY
2	10-34352		1,-	SCREW, BRACKET TO STEERING ARM
	10-37909		-,1	SCREW, BRACKET TO STEERING ARM
3	11-20509		1,-	NUT, STEERING BRACKET SCREW
4	23-35016		-,1	SPACER, SCREW TO BRACKET

STEERING HANDLE ASSEMBLY, COMPLETE



STEERING HANDLE ASSEMBLY, COMPLETE

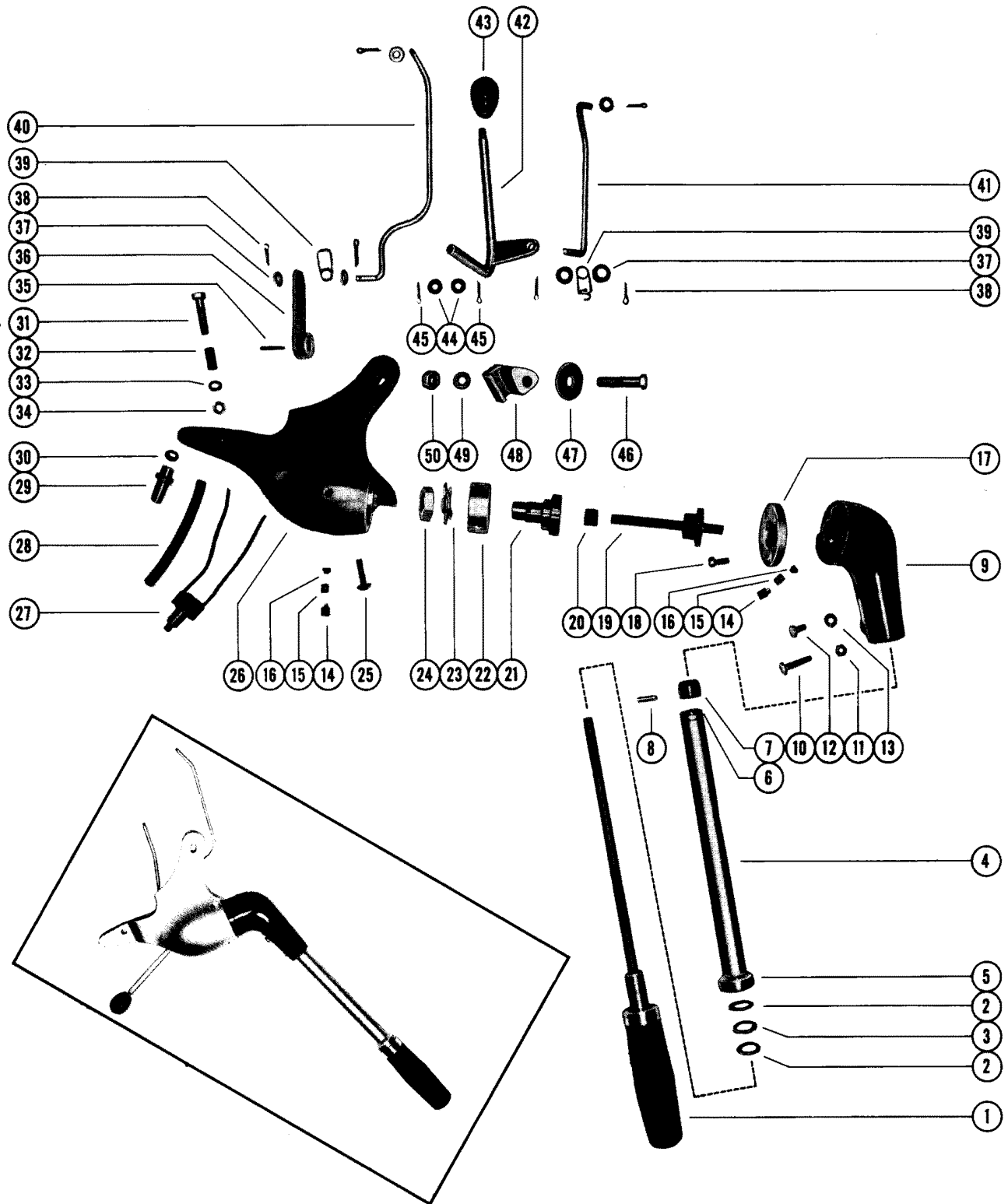
REF. NO.	PART NO.	SYM.	QTY.	DESCRIPTION
-	25262A1	●■	1,,	STEERING HANDLE ASSEMBLY, COMPLETE .
-	29822A1	●■	,1,	STEERING HANDLE ASSEMBLY, COMPLETE
-	36182A1		,,1	STEERING HANDLE ASSEMBLY, COMPLETE
-	20591A12		1,1,1	STEERING HANDLE ASSEMBLY
1	20591A1		1,,	HANDLE, GRIP AND SHAFT ASSEMBLY
	20591A11		,1,1	HANDLE, GRIP AND SHAFT ASSEMBLY
2	15-20729		2,2,2	SHIM, STEEL - STEE RING HANDLE (.010)
3	13-20730		1,1,1	WASHER, WAVE - STEERING HANDLE
4	20731A1		1,,	TUBE ASSEMBLY, STEERING HANDLE
	29429A1		,1,1	TUBE ASSEMBLY, STEERING HANDLE
5	20732		1,1,1	RING, POINTER - STEERING HANDLE TUBE
6	23-20733		1,1,1	BUSHING, STEERING HANDLE TUBE
-	15-20729	AR,AR,AR	AR,AR,AR	SHIM, STEEL - TUBE ASSEMBLY TO GEAR (.010)
7	43-23221		1,1,1	GEAR, BEVEL PINION - GRIP AND SHAFT ASSEMBLY
8	17-24865		1,1,1	PIN, GROOVE - PINION GEAR TO SHAFT
9	20735		1,1,1	ELBOW, STEERING HANDLE
10	10-21091		1,1,1	SCREW, STEERING HANDLE TO ELBOW (1 1/8")
11	11-20361		1,1,1	NUT, STEERING HANDLE CLAMPING SCREW
12	10-20031		1,1,1	SCREW, STEERING HANDLE LOCATING (1/2")
13	13-26992		1,1,1	LOCKWASHER, STEERING HANDLE LOCATING SCREW
14	10-20608		2,2,2	SCREW, FRICTION PLUG - ELBOW AND BRACKET
15	24-20609		2,2,2	SPRING, FRICTION PLUG SCREW
16	20737		2,2,2	PLUG, FRICTION - ELBOW AND BRACKET
17	20744		1,1,1	PLATE, ELBOW COVER
18	10-20738		4,4,4	SCREW, COVER PLATE TO ELBOW (5/8")
19	25274A1		1,1,1	CROSS SHAFT ASSEMBLY
20	23-25335		1,1,1	SPACER, CROSS SHAFT GEAR TO BUSHING
21	23-20743		1,1,1	BUSHING, CROSS SHAFT
22	25285		1,1,1	SUPPORT, CROSS SHAFT BUSHING
23	14-20745		1,1,1	TAB WASHER, CROSS SHAFT BUSHING NUT
24	11-20739		1,1,1	NUT, CROSS SHAFT BUSHING TO SUPPORT
25	10-25279		3,,	SCREW, SUPPORT TO HANDLE BRACKET (1")
	10-25205		,3,3	SCREW, SUPPORT TO HANDLE BRACKET (3/4")
26	25270A1		1,,	STEERING HANDLE BRACKET ASSEMBLY
	29563A1		,1,	STEERING HANDLE BRACKET ASSEMBLY
	36216A1		,,1	STEERING HANDLE BRACKET ASSEMBLY
27	29686		1,1,1	SWITCH, SHORTING - W/LEAD WIRES
28	23-25303		1,1,1	SLEEVE, RUBBER - SHORTING SWITCH
29	21105		1,1,1	CONNECTOR, SHORTING SWITCH
30	25-21706		1,1,1	"O" RING, SHORTING SWITCH CONNECTOR
31	10-21339		1,1,	SCREW, HANDLE BRACKET TO BOTTOM COWL (1 3/8")
	10-31834		,,1	SCREW, HANDLE BRACKET TO BOTTOM COWL (1 7/8")

● = [25262A 1] AND [29822A 1] STEERING HANDLE ASSEMBLIES ARE NO LONGER AVAILABLE.

■ = FOR REPLACEMENT--ORDER [36182A 1] STEERING HANDLE ASSEMBLY. COMPONENT PARTS ARE STILL ST

CONTINUED ON NEXT PAGE ➡

STEERING HANDLE ASSEMBLY, COMPLETE

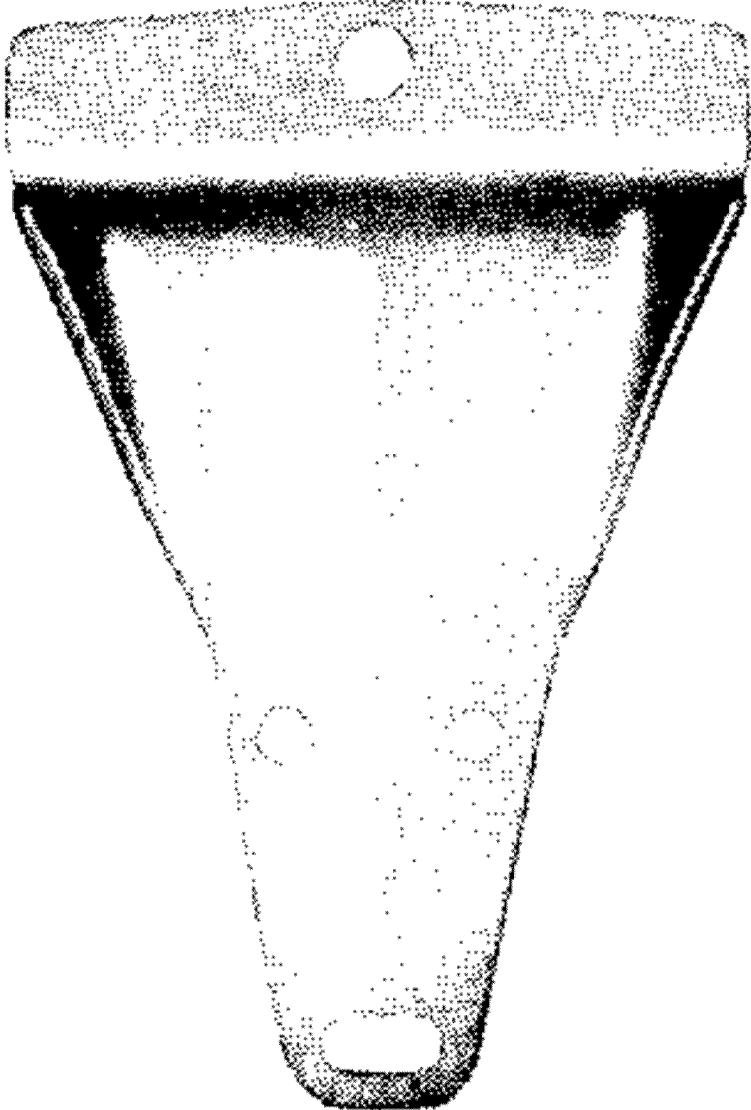
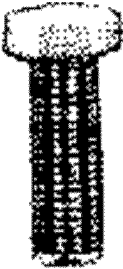


STEERING HANDLE ASSEMBLY, COMPLETE

REF. NO.	PART NO.	SYM.	QTY.	DESCRIPTION
32	23-30079		,1,1	SPACER, BRACKET TO BOTTOM COWL SCREW
33	12-20722		1,1,1	WASHER, BRACKET FASTENING SCREW
34	11-25594		1,1,1	NUT, BRACKET FASTENING SCREW
35	17-24192		1,1,1	PIN, ROLL - MAGNETO CONTROL LEVER TO CROSS SHAFT
36	25275A1		1,1,1	MAGNETO CONTROL LEVER ASSEMBLY
37	12-20533		6,6,6	WASHER, MAGNETO CONTROL LEVER AND LINK ROD
38	18-25191		6,6,6	COTTER PIN, LINK ROD FASTENING
39	24-25321		2,2,2	SPRING, TENSION - LINK ROD
40	25283		1,1,1	ROD, LINK - MAGNETO CONTROL
41	25282		1,1,1	ROD, LINK - SHIFT CONTROL
42	25272A1		1,1,1	SHIFT CONTROL LEVER ASSEMBLY
43	20980		1,1,1	KNOB, SHIFT CONTROL LEVER
44	12-20086		2,2,2	WASHER, SHIFT CONTROL LEVER TO HANDLE BRACKET
45	18-25191		2,2,2	COTTER PIN, SHIFT CONTROL LEVER FASTENING
46	10-21489		1,,	SCREW, HANDLE BRACKET TO BOTTOM COWL (1 3/4")
	10-21449		,1,	SCREW, HANDLE BRACKET TO BOTTOM COWL (2")
	10-21449		,,2	SCREW, HANDLE BRACKET TO BOTTOM COWL (2")
47	12-25828		,1,	WASHER, HANDLE BRACKET FASTENING SCREW
	12-25828		,,2	WASHER, HANDLE BRACKET FASTENING SCREW
48	54-29562		,1,	CLAMP, HANDLE BRACKET FASTENING SCREW
	54-29562		,,2	CLAMP, HANDLE BRACKET FASTENING SCREW
49	12-20084		2,,2	WASHER, HANDLE BRACKET FASTENING SCREW
	12-20084		,1,	WASHER, HANDLE BRACKET FASTENING SCREW
50	11-29250		2,,2	NUT, HANDLE BRACKET FASTENING SCREW
	11-29250		,1,	NUT, HANDLE BRACKET FASTENING SCREW

FOR REPLACEMENT---ORDER[A-36182A1] STEERING HANDLE ASSEMBLY. COMPONENT PARTS ARE STILL STOCKED, SO ORDER YOUR REPLACEMENT PARTS ACCORDINGLY

INSIDE STEERING BRACKETS

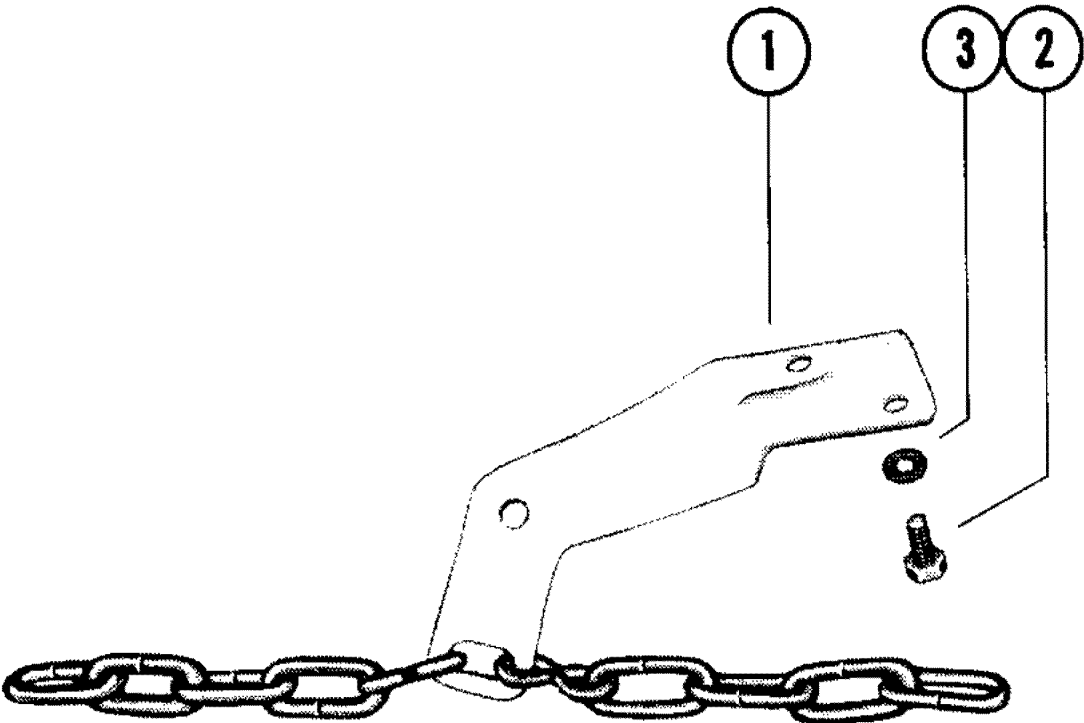


INSIDE STEERING BRACKETS

REF. NO.	PART NO.	SYM.	QTY.	DESCRIPTION
-	10-30155		1	SCREW, STEERING BRACKET ATTACHING INCLUDED WITH [A-30152A1] STEERING BRACKET ASS'Y
-	11-22178		1	NUT, STEERING BRACKET ATTACHING SCREW INCLUDED WITH [A-30152A1] STEERING BRACKET ASS'Y
-	10-20639		1	SCREW, STEERING BRACKET ATTACHING ON ENGINES WHERE HOLE IN BOTTOM COWL IS 3/8' DIAMETER, REPLACE ABOVE PARTS ABOVE PARTS WITH THESE
-	12-25866		1	WASHER, STEERING BRACKET ATTACHING SCREW ON ENGINES WHERE HOLE IN BOTTOM COWL IS 3/8' DIAMETER, REPLACE ABOVE PARTS ABOVE PARTS WITH THESE
-	11-21528		1	NUT,STEERING BRACKET ATTACHING SCREW ON ENGINES WHERE HOLE IN BOTTOM COWL IS 3/8' DIAMETER, REPLACE ABOVE PARTS ABOVE PARTS WITH THESE

USE ON ENGINES WHERE HOLE IN BOTTOM COWL IS 29/64" DIAMETER
 ON ENGINES WHERE HOLE IN BOTTOM COWL IS 3/8" DIAMETER, REPLACE WITH: [C-10-20639] : [C-12-25866] : [C-11-21528]

STEERING BRACKET ASSEMBLY

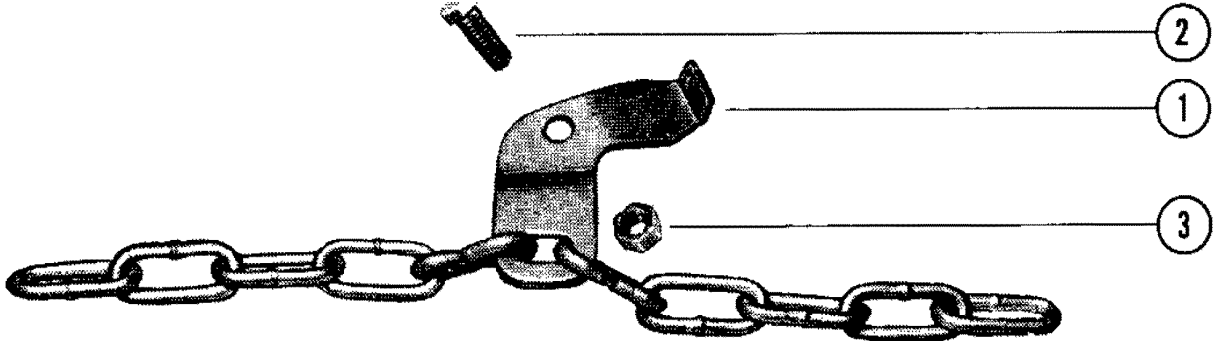


STEERING BRACKET ASSEMBLY

REF. NO.	PART NO.	SYM.	QTY.	DESCRIPTION
1	34745A2		0	STEERING BRACKET ASSEMBLY (SEE NOTE)
	34746A2		1	STEERING BRACKET ASSEMBLY (SEE NOTE)
2	10-28635		2	SCREW, STEERING BRACKET TO STEERING ARM BRACKET
3	13-26992		2	LOCKWASHER, STEERING BRACKET SCREW

[A-34745A2] STEERING BRACKET ASSEMBLY FOR USE ON MERC 110, 75, 60, 40 AND 39 ONLY, AND [A-34746A2] STEERING BRACKET ASSEMBLY FOR USE ON MERC 200 FULL GEAR SHIFT ONLY

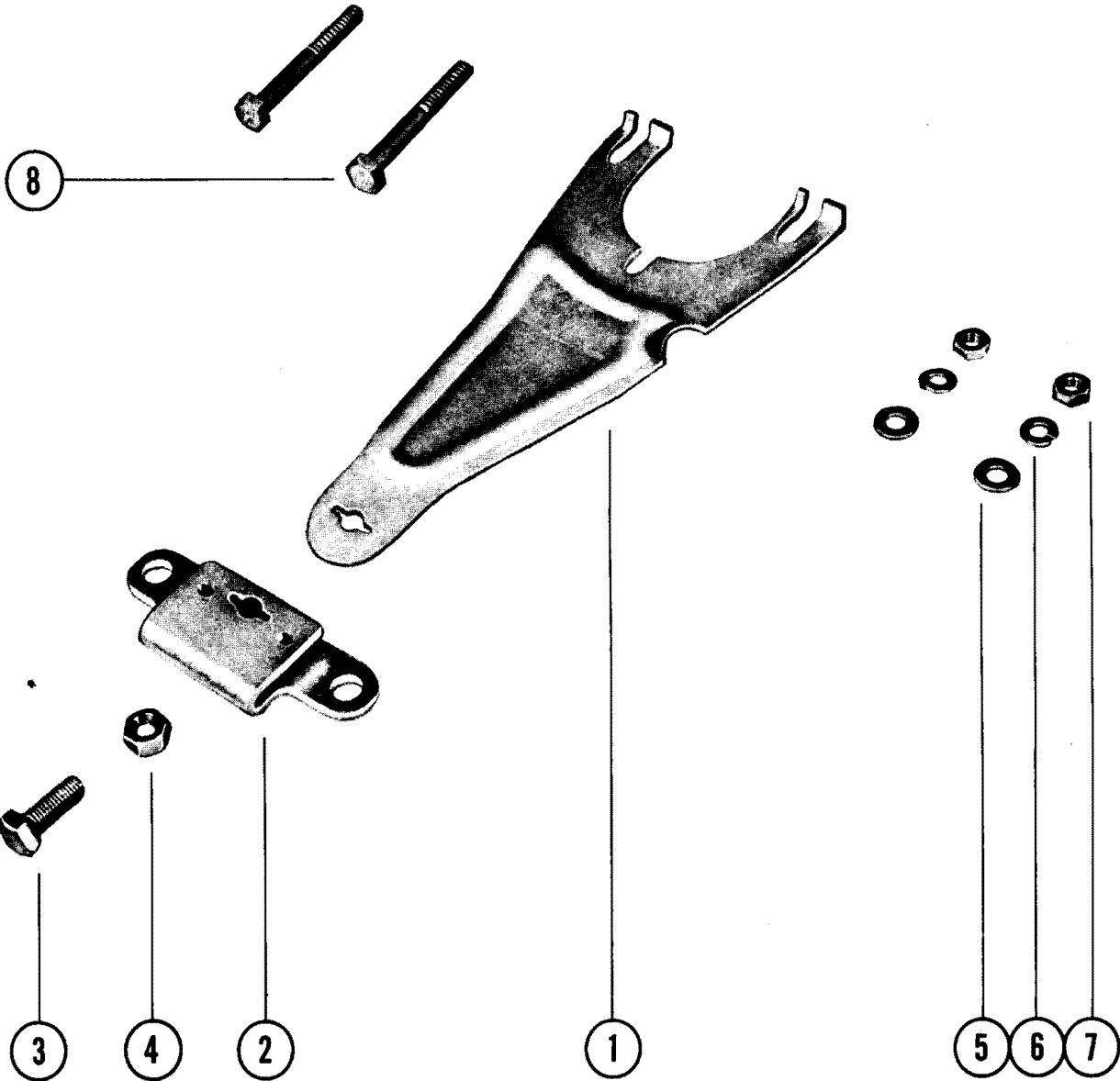
STEERING BRACKET ASSEMBLY (MERC 350-2 CYLINDER)



STEERING BRACKET ASSEMBLY (MERC 350-2 CYLINDER)

REF. NO.	PART NO.	SYM.	QTY.	DESCRIPTION
1	34152A3		1	STEERING BRACKET ASSEMBLY
2	10-20090		1	SCREW, STEERING BRACKET TO STEERING ARM
3	11-20509		1	NUT, STEERING BRACKET SCREW

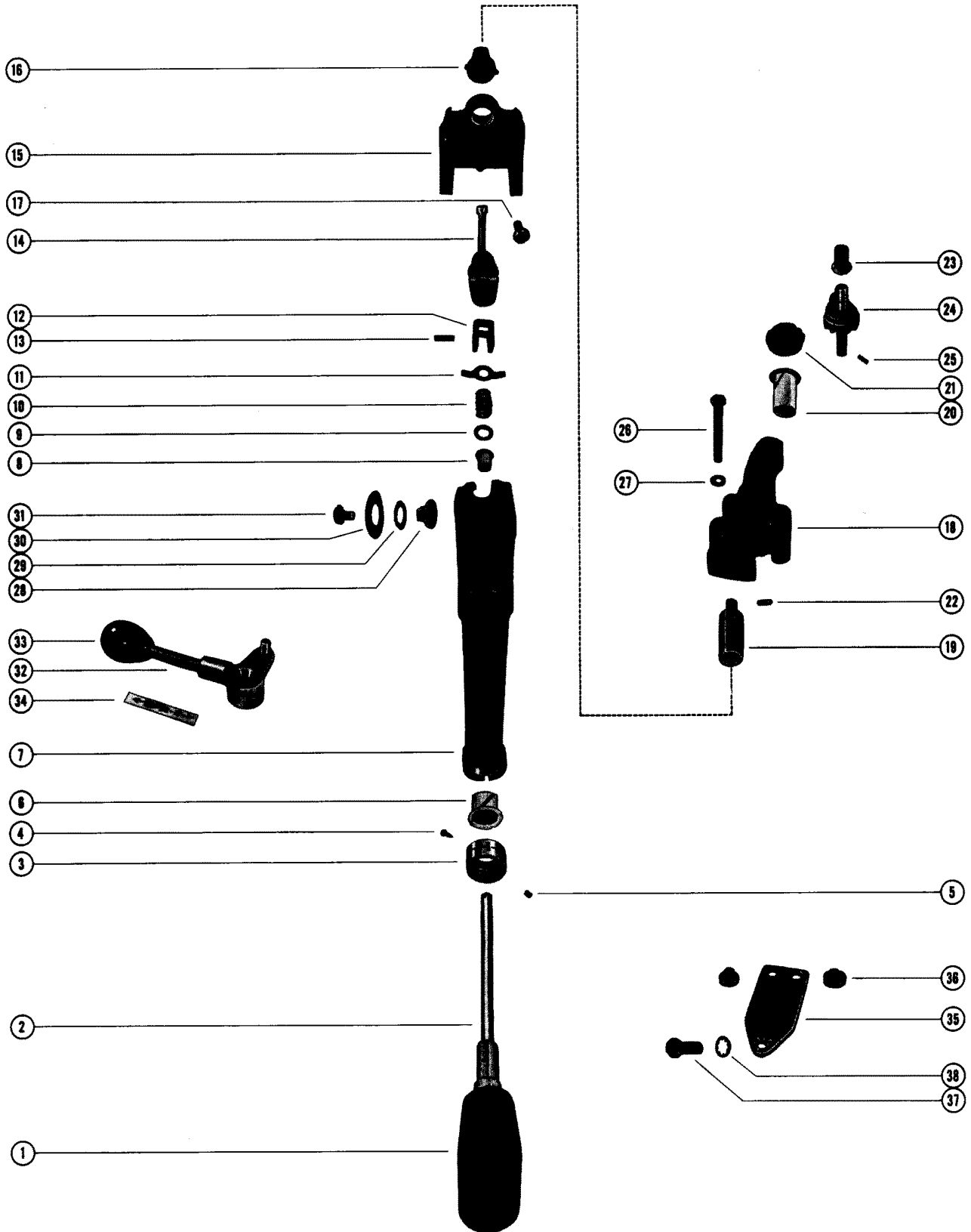
INSIDE STEERING BRACKET ASSEMBLY



INSIDE STEERING BRACKET ASSEMBLY

REF. NO.	PART NO.	SYM.	QTY.	DESCRIPTION
-	28689A1		1	INSIDE STEERING BRACKET ASSEMBLY
1	28689		1	BRACKET, INSIDE STEERING
2	28691		1	CONNECTOR, INSIDE STEERING BRACKET
3	10-20705		1	SCREW, CONNECTOR TO STEERING BRACKET LATE STYLE
4	11-20102		1	NUT, CONNECTOR FASTENING SCREW LATE STYLE
-	17-28690		1	PIN, CONNECTOR TO STEERING BRACKET EARLY STYLE
-	24-20510		1	SPRING, CONNECTOR PIN EARLY STYLE
-	17-23928		1	ROLL PIN, SPRING TO CONNECTOR PIN EARLY STYLE
5	12-20533		2	WASHER, CHECK UNIT ADAPTOR SCREW
6	13-26992		2	LOCKWASHER, CHECK UNIT ADAPTOR SCREW
7	11-20013		2	NUT, CHECK UNIT ADAPTOR FASTENING SCREW
8	10-21937		2	SCREW, STEERING BRACKET TO SADDLE (2")

STEERING HANDLE ASSEMBLY, COMPLETE



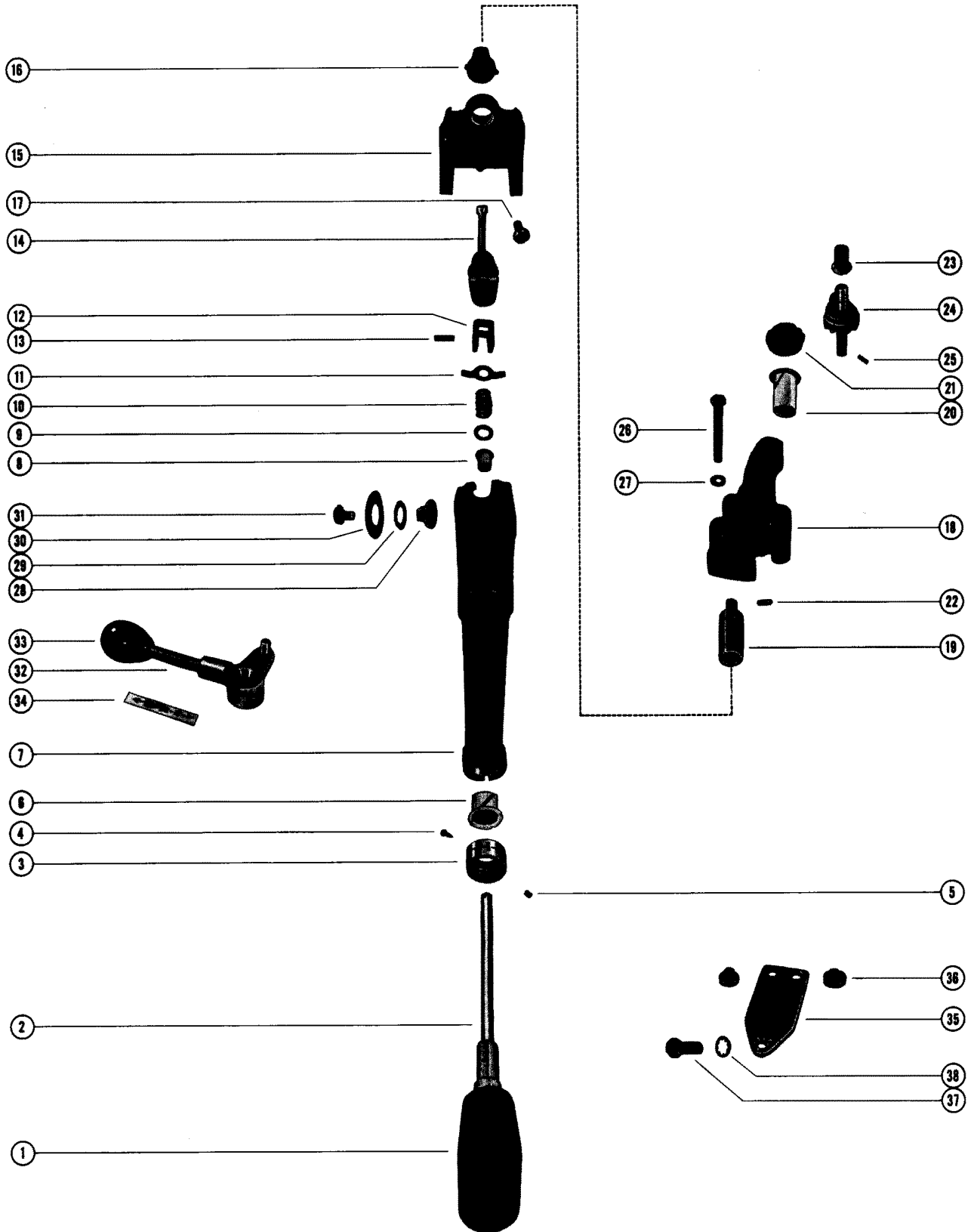
STEERING HANDLE ASSEMBLY, COMPLETE

REF. NO.	PART NO.	SYM.	QTY.	DESCRIPTION
-	34129A	■	1	STEERING HANDLE ASSEMBLY, COMPLETE NLA PART IS SUPERSEDED BY [A-34129A6] STEERING HANDLE ASSEMBLY
-	33405A2		1	STEERING HANDLE ASSEMBLY
1	27763		1	GRIP, RUBBER - STEERING HANDLE BODY
2	33404		1	BODY AND SHAFT, STEERING HANDLE
3	31001		1	INDICATOR, SPEED AND SHIFT - STEERING HANDLE
4	10-22290		1	SCREW, DRIVE - INDICATOR TO STEERING HANDLE BODY
5	10-31002		1	SCREW, SET - SPEED AND SHIFT INDICATOR
6	23-30677		1	BUSHING, NYLON - STEERING HANDLE TO BODY
7	33405A1		1	STEERING HANDLE ASSEMBLY
8	23-28100		1	BUSHING, NYLON - STEERING HANDLE
9	12-20084		1	WASHER, STEERING HANDLE SHAFT
10	24-26703		1	SPRING, STEERING HANDLE SHAFT
11	14-26706		1	TAB WASHER, YOKE PIN HOLDING
12	30235		1	YOKE, STEERING HANDLE SHAFT
13	17-26862		1	PIN YOKE TO STEERING HANDLE SHAFT
14	33535A1		1	THROTTLE CONTROL SHAFT ASSEMBLY
15	35570		1	BRACKET, STEERING ARM
16	30970		1	BOOT, RUBBER - THROTTLE CONTROL SHAFT
17	10-28663		1	SCREW, THROTTLE CONTROL SHAFT TO BRACKET
18	34138		1	BRACKET, THROTTLE CONTROL
19	31200		1	SOCKET, THROTTLE CONTROL
20	23-31011		1	BUSHING, NYLON - THROTTLE CONTROL SOCKET
21	43-30703		1	GEAR, THROTTLE CONTROL SOCKET
22	17-22896		1	PIN, ROLL - GEAR TO THROTTLE CONTROL SOCKET
23	23-34136		1	BUSHING, NYLON - GEAR TO CONTROL BRACKET
24	43-34137		1	GEAR, VERTICAL - CONTROL BRACKET
25	17-23928		1	PIN, ROLL - VERTICAL GEAR TO CONTROL BRACKET
26	10-30720		3	SCREW, THROTTLE CONTROL BRACKET TO BOTTOM COWL
27	13-26992		3	LOCKWASHER, THROTTLE CONTROL BRACKET SCREW
28	26711		2	PIVOT, STEERING HANDLE TO BRACKET
29	15-26707		2	SHIM, STEERING HANDLE PIVOT TO BRACKET
30	15-28485		2	SHIM, STEERING HANDLE TO ARM BRACKET
31	10-28592		2	SCREW, STEERING HANDLE TO ARM BRACKET
32	34135		1	LEVER, SHIFT CONTROL
33	20980		1	KNOB, SHIFT CONTROL LEVER

■ = FOR USE ON MERC 350 (2 CYLINDER) ENGINES ONLY. A-[34129A14] STEERING HANDLE ASSEMBLY IS

CONTINUED ON NEXT PAGE ➡

STEERING HANDLE ASSEMBLY, COMPLETE

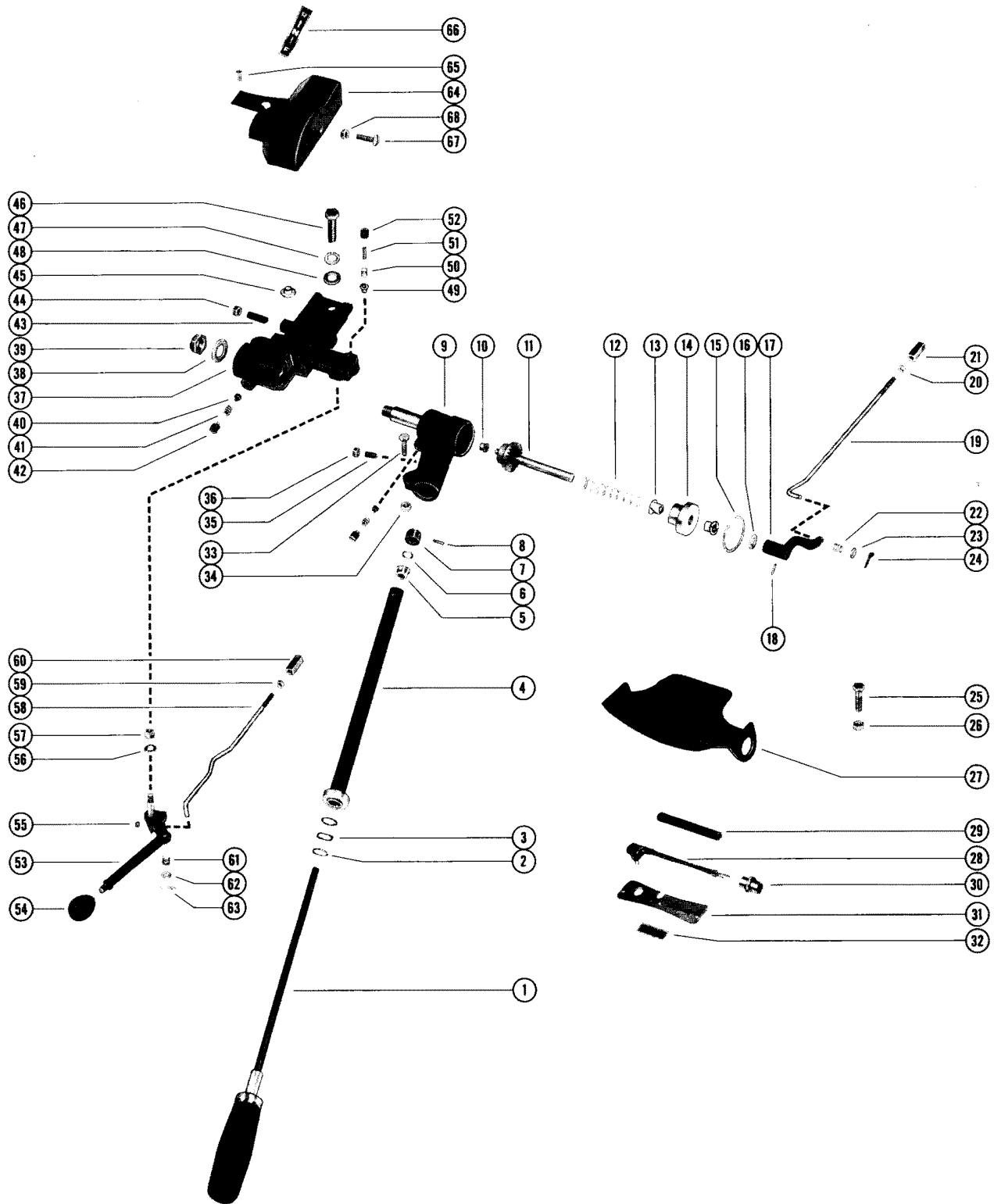


STEERING HANDLE ASSEMBLY, COMPLETE

REF. NO.	PART NO.	SYM.	QTY.	DESCRIPTION
34	37-34204		1	DECAL, BOTTOM COWL
35	33984		1	PLATE, CLAMP
36	23026		2	DISC, FRICTION - CLAMP PLATE
37	10-26065		1	SCREW, CLAMP PLATE TO SWIVEL BRACKET
38	13-21804		1	LOCKWASHER, CLAMP PLATE FASTENING SCREW

[A-34129A4] STEERING HANDLE ASSEMBLY IS NO LONGER AVAILABLE AND IS SUPERSEDED BY [A-34129A6] STEERING HANDLE ASSEMBLY

STEERING HANDLE ASSEMBLY, COMPLETE

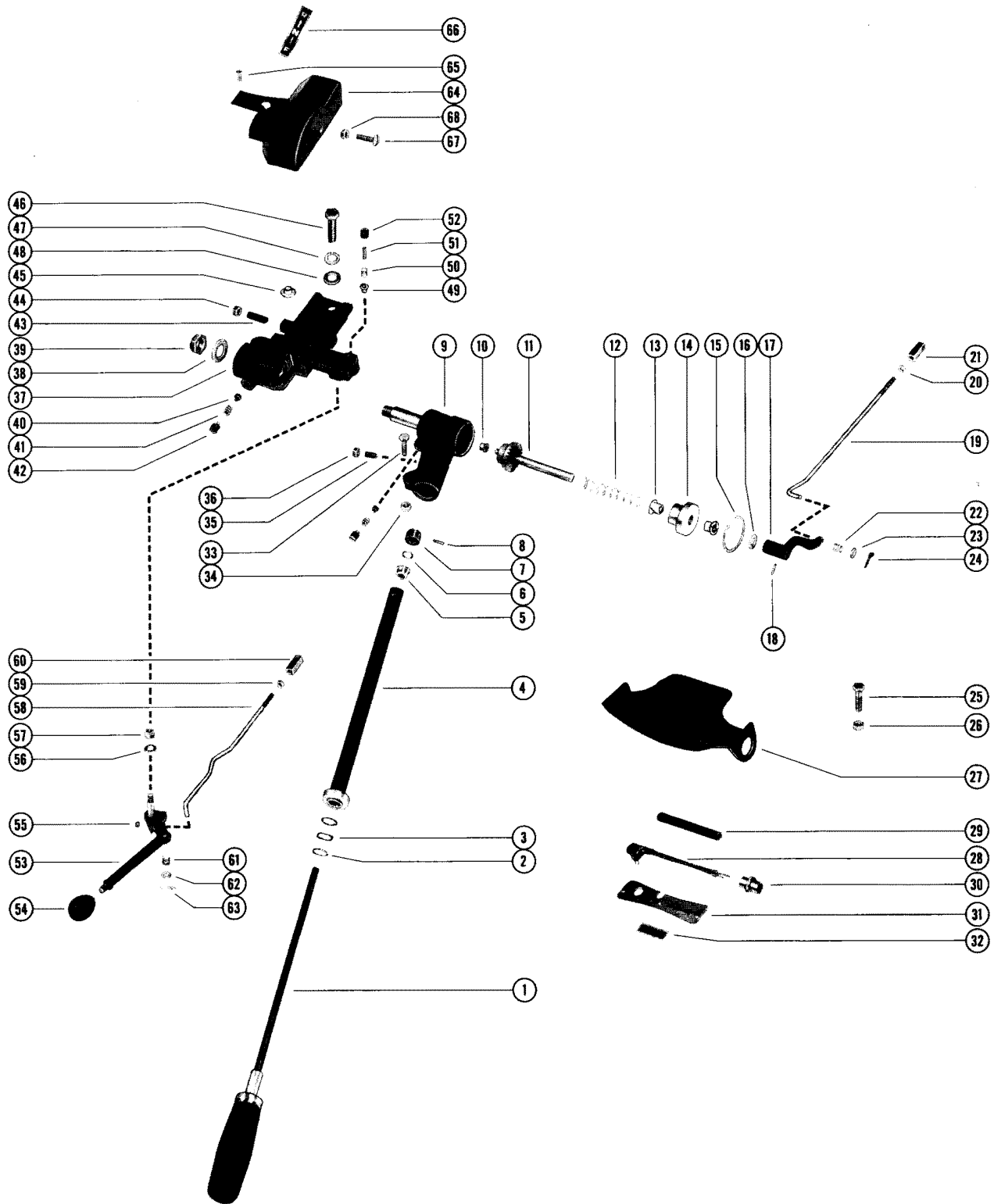


STEERING HANDLE ASSEMBLY, COMPLETE

REF. NO.	PART NO.	SYM.	QTY.	DESCRIPTION
-	38445A1		1	STEERING HANDLE ASSEMBLY, COMPLETE
-	20591A13		1	STEERING HANDLE ASSEMBLY, COMPLETE
1	20591A11		1	STEERING HANDLE ASSEMBLY
2	15-20729		2	SHIM, STEERING HANDLE (.010)
3	13-20730		1	WASHER, WAVE - STEERING HANDLE
4	32-38926A1		1	TUBE ASSEMBLY, STEERING HANDLE
5	23-20733		1	BUSHING, STEERING HANDLE TUBE
6	15-20729		AR	SHIM, STEERING HANDLE TO GEAR
7	43-23221		1	GEAR, BEVEL PINION - STEERING HANDLE
8	17-24865		1	PIN, PINION GEAR TO STEERING HANDLE
9	38464		1	ELBOW, STEERING HANDLE
10	23-26856		1	BUSHING, NYLON - GEAR AND SHAFT (1/4" I.D.)
11	38479A1		1	GEAR AND SHAFT ASSEMBLY
12	24-38741		1	SPRING, COMPRESSION - GEAR AND SHAFT
13	23-26954		2	BUSHING, NYLON - END COVER (3/8" I. D.)
14	38483		1	END COVER, GEAR AND SHAFT (STEERING ELBOW)
15	53-38476		1	RING, SNAP - END COVER RETAINING
16	12-38742		1	WASHER, GEAR AND SHAFT
17	38480		1	ARM THROTTLE - GEAR AND SHAFT
18	17-38489		1	PIN, ROLL - THROTTLE ARM TO GEAR AND SHAFT
19	38493		1	LINK ROD, THROTTLE
20	11-21869		1	NUT, JAM - THROTTLE LINK ROD
21	38475		1	ROD END, THROTTLE LINK ROD
22	24-38497		1	SPRING, THROTTLE LINK ROD
23	12-29245		1	WASHER, THROTTLE LINK ROD
24	18-25191		1	COTTER PIN, THROTTLE LINK ROD TO THROTTLE ARM
25	10-358711		1	SCREW, LINK ROD TO STEERING BRACKET (1 1/2) USE IN CONJUNCTION WITH [A-29728A5] CO-PILOT KIT ONLY
26	11-205091		1	NUT, LINK ROD SCREW USE IN CONJUNCTION WITH [A-29728A5] CO-PILOT KIT ONLY
27	38843		1	BRACKET, SUPPORT- STEERING
28	38490		1	SWITCH, SHORTING - BAFFLE PLATE
29	23-38492		1	SLEEVE, SHORTING SWITCH
30	22-38485		1	CONNECTOR, SHORTING SWITCH
31	38491		1	PLATE, BAFFLE - BOTTOM COWL
32	37-38484		1	DECAL, BOTTOM COWL (OFF- ON)
33	10-21091		1	SCREW, STEERING HANDLE TO ELBOW (1 1/8")
34	11-20361		1	NUT, STEERING HANDLE SCREW
35	10-38925		1	SCREW, SET- STEERING ELBOW
36	11-20890		1	NUT, STEERING ELBOW SET SCREW
37	38482		1	BRACKET, STEERING LEVER
38	12-38503		1	WASHER, STEERING ELBOW TO STEERING BRACKET NUT
39	11-22339		1	NUT, STEERING ELBOW TO STEERING BRACKET
40	20737		2	PLUG, FRICTION - STEERING BRACKET AND ELBOW

CONTINUED ON NEXT PAGE ➡

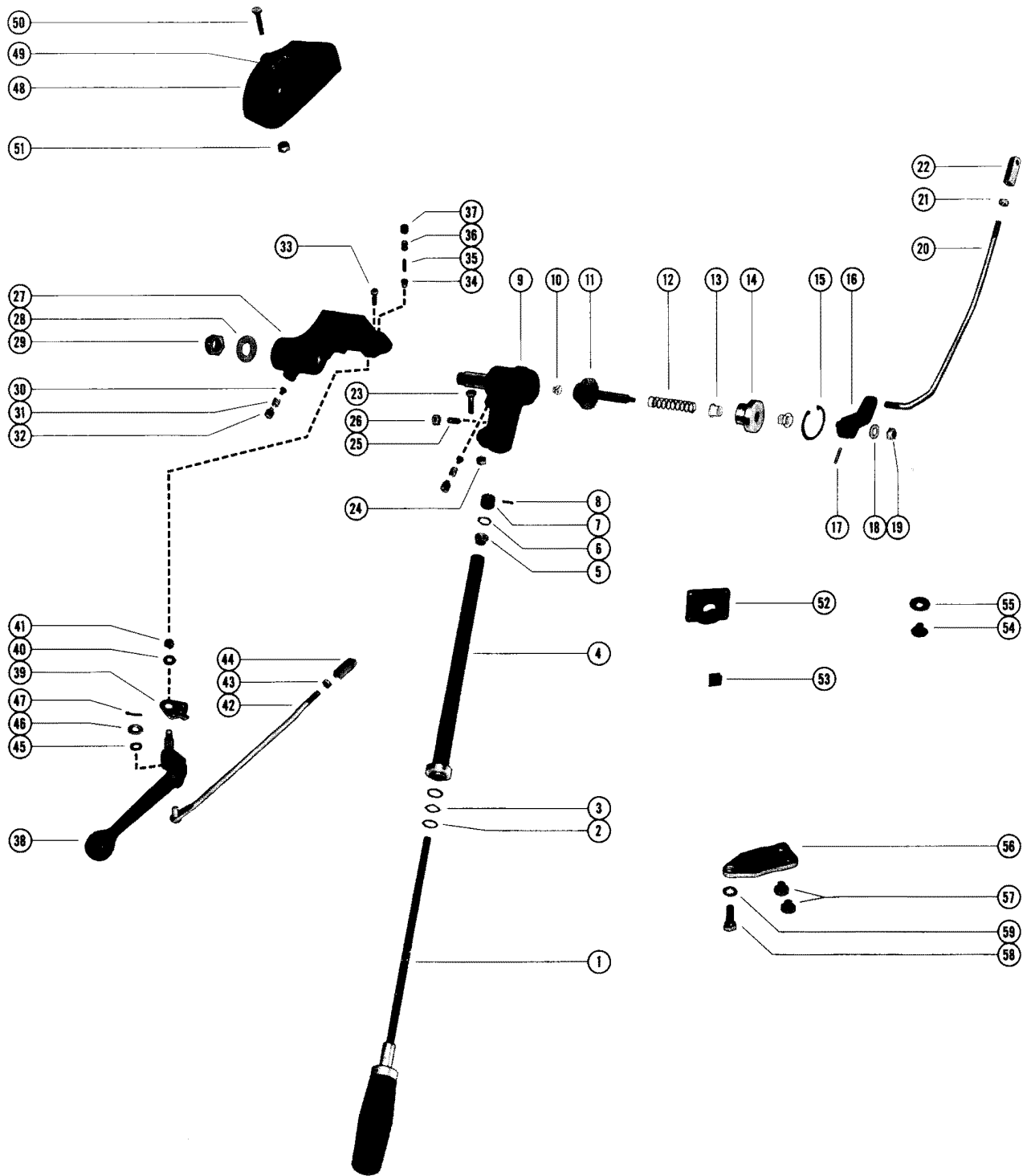
STEERING HANDLE ASSEMBLY, COMPLETE



STEERING HANDLE ASSEMBLY, COMPLETE

REF. NO.	PART NO.	SYM.	QTY.	DESCRIPTION
41	24-20609		2	SPRING, FRICTION PLUG SCREW
42	10-20608		2	SCREW, FRICTION PLUG - STEERING BRACKET AND ELBOW
43	10-38488		2	SCREW, SET - STEERING LEVER BRACKET
44	11-22046		2	NUT, JAM - STEERING LEVER BRACKET SET SCREW
45	38855		3	BUTTON, NYLON - STEERING LEVER BRACKET
46	10-35871		1	SCREW, STEERING BRACKET TO ENGINE (1 1/2")
47	13-20758		1	LOCKWASHER, STEERING BRACKET SCREW
48	12-20553		1	WASHER, STEERING BRACKET SCREW
49	17-20009		1	PIN, DETENT - SHIFT LEVER
50	24-35227		1	SPRING, COMPRESSION - SHIFT LEVER DETENT PIN
51	24-35210		1	SPRING, TENSION - SHIFT LEVER DETENT PIN
52	10-22928		1	SCREW, SET - SHIFT LEVER DETENT PIN
53	38481A1		1	LEVER ASSEMBLY, SHIFT
54	20980		1	KNOB, SHIFT LEVER
55	10-38477		1	SCREW, SET - SHIFT LEVER
56	12-34437		1	WASHER, SHIFT LEVER
57	11-21528		1	NUT, SHIFT LEVER TO BRACKET
58	38494		1	LINK ROD, SHIFT
59	11-21869		1	NUT, JAM - SHIFT LINK ROD
60	38475		1	ROD END, SHIFT LINK ROD
61	24-38497		1	SPRING, SHIFT LINK ROD
62	12-29245		1	WASHER, SHIFT LINK ROD
63	18-25191		1	COTTER PIN, SHIFT LINK ROD TO SHIFT LEVER
64	38495		1	COVER, STEERING BRACKET
65	10-20100		2	SCREW, COVER TO STEERING BRACKET (1/2")
66	37-38620		1	DECAL, STEERING BRACKET COVER (F-N- R)
67	10-25279		1	SCREW, STOP - STEERING COVER USE ONLY ON EARLY STYLE STEERING BRACKET COVER
68	11-20890		1	NUT, STEERING COVER STOP SCREW USE ONLY ON EARLY STYLE STEERING BRACKET COVER

STEERING HANDLE ASSEMBLY, COMPLETE



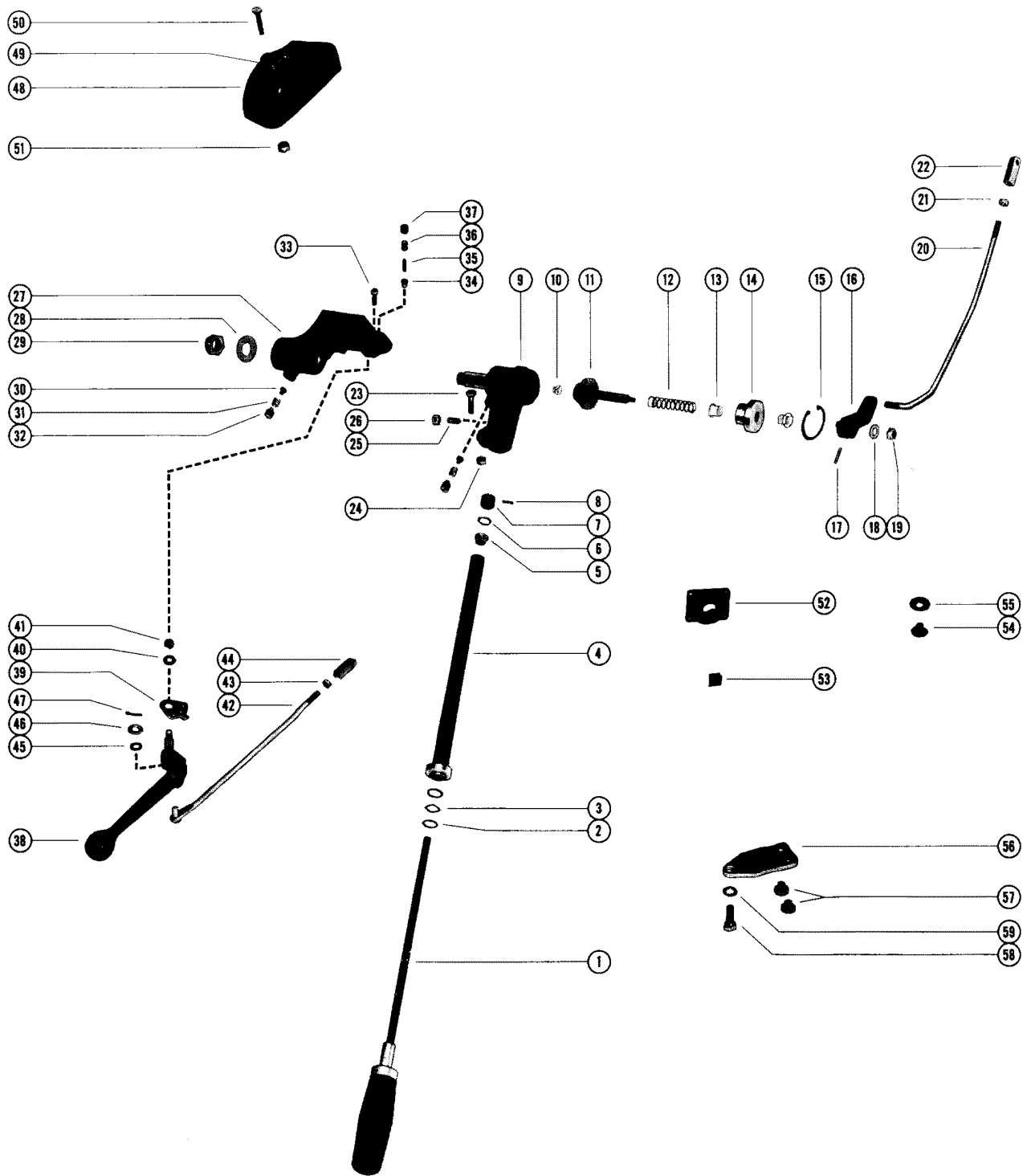
STEERING HANDLE ASSEMBLY, COMPLETE

REF. NO.	PART NO.	SYM.	QTY.	DESCRIPTION
-	39926A1	◇	1	STEERING HANDLE ASSEMBLY, COMPLETE
-	20591A13		1	STEERING HANDLE ASSEMBLY, COMPLETE
1	20591A11		1	STEERING HANDLE ASSEMBLY
2	15-20729		2	SHIM, STEERING HANDLE (.010)
3	13-20730		1	WASHER, WAVE - STEERING HANDLE
4	32-38926A1		1	TUBE ASSEMBLY, STEERING HANDLE
5	23-20733		1	BUSHING, STEERING HANDLE TUBE
6	15-20729		AR	SHIM, STEERING HANDLE TUBE TO PINION GEAR (.010)
7	43-23221		1	GEAR, PINION - STEERING HANDLE
8	17-24865		1	PIN, PINION GEAR TO STEERING HANDLE
9	38464		1	ELBOW, STEERING HANDLE
10	23-26856		1	BUSHING, NYLON - SHAFT AND GEAR (1/4" I. D.)
11	45058A1		1	SHAFT AND GEAR ASSEMBLY, STEERING ELBOW
12	24-38741		1	SPRING, COMPRESSION - SHAFT AND GEAR
13	23-26954		2	BUSHING, NYLON - END COVER (3/8" I.D.)
14	38483		1	END COVER, SHAFT AND GEAR - STEERING ELBOW
15	53-38476		1	RING, SNAP - END COVER RETAINING
16	45035		1	ARM, THROTTLE - SHAFT AND GEAR
17	17-26759		1	PIN, ROLL - THROTTLE ARM TO SHAFT AND GEAR
18	12-34437		1	WASHER, SHAFT AND GEAR
19	11-20102		1	NUT, THROTTLE ARM TO SHAFT AND GEAR
20	45072		1	ROD, THROTTLE
21	11-21869		1	NUT, JAM - THROTTLE ROD (1/4")
22	38475		1	ROD END, THROTTLE ROD
23	10-21091		1	SCREW, STEERING HANDLE TO STEERING ELBOW (1 1/8")
24	11-20361		1	NUT, STEERING HANDLE SCREW
25	10-32571		1	SCREW, SET - STEERING ELBOW
26	11-T20890		1	NUT, STEERING ELBOW SET SCREW
27	45025		1	BRACKET, STEERING HANDLE
28	12-38503		1	WASHER, STEERING ELBOW TO STEERING BRACKET NUT
29	11-22339		1	NUT, STEERING ELBOW TO STEERING BRACKET
30	20737		2	PLUG, FRICTION - STEERING HANDLE BRACKET AND ELBOW
31	24-20609		2	SPRING, FRICTION PLUG SCREW
32	10-20608		2	SCREW, FRICTION PLUG - STEERING HANDLE BRACKET AND ELBOW
33	10-20646		1	SCREW, COVER TO STEERING BRACKET (5/8")
34	17-45065		1	PIN, DETENT - SHIFT LEVER
35	24-35210		1	SPRING, TENSION - SHIFT LEVER DETENT PIN
36	24-35227		1	SPRING, COMPRESSION - SHIFT LEVER DETENT PIN
37	10-38477		1	SCREW, SET - SHIFT LEVER DETENT PIN
38	45043A1		1	SHIFT LEVER ASSEMBLY
39	45067		1	PLATE, DETENT - SHIFT LEVER

◇ = FOR USE ON MERC 350 (2-CYLINDER) SERIAL #1976427 THRU #2258863.

CONTINUED ON NEXT PAGE ➡

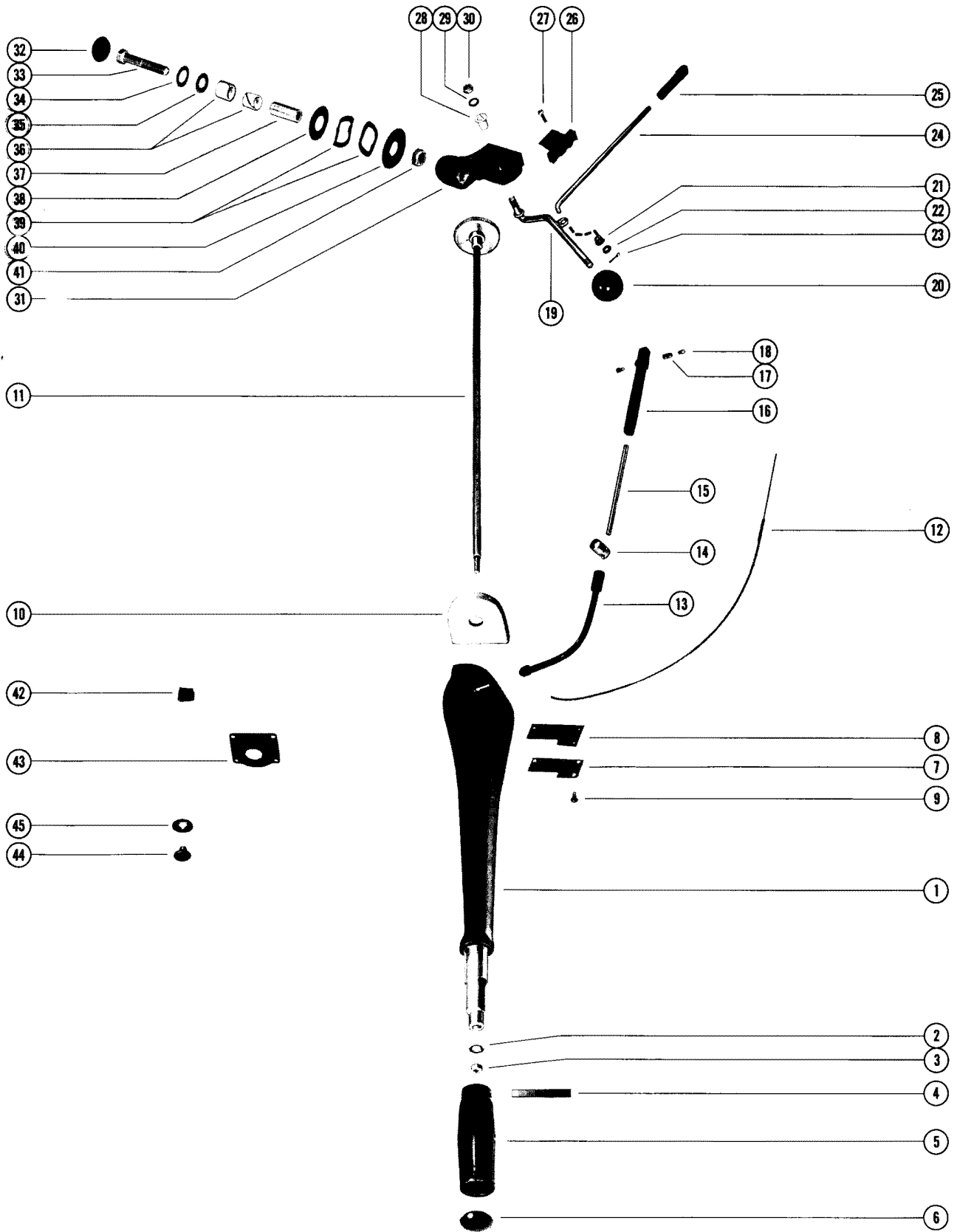
STEERING HANDLE ASSEMBLY, COMPLETE



STEERING HANDLE ASSEMBLY, COMPLETE

REF. NO.	PART NO.	SYM.	QTY.	DESCRIPTION
40	12-34437		1	WASHER, SHIFT LEVER
41	11-20102		1	NUT, SHIFT LEVER TO STEERING HANDLE BRACKET
42	45062A1		1	SHIFT ROD ASSEMBLY
43	11-21869		1	NUT, JAM - SHIFT ROD
44	38475		1	ROD END, SHIFT ROD
45	13-28943		1	WASHER, WAVE - SHIFT ROD
46	12-29245		1	WASHER, SHIFT ROD
47	18-20180		1	COTTER PIN, SHIFT ROD TO SHIFT LEVER
48	45026		1	COVER, STEERING BRACKET
49	37-38620		1	DECAL, STEERING BRACKET COVER (F-N-R)
50	10-24644		1	SCREW, COVER TO STEERING BRACKET (1 3/8")
51	11-20586		1	NUT, COVER TO STEERING BRACKET SCREW
52	45064		1	COVER, BOTTOM COWL - SHORTING SWITCH
53	54-22783		1	"S" CLIP, BOTTOM COWL - SHORTING SWITCH LEADS
54	19-35827		1	PLUG, BOTTOM COWL (SHORTING SWITCH HOLE)
55	53-30428		1	FASTENER, PLUG TO BOTTOM COWL
56	33984		1	PLATE, CLAMP- CO-PILOT
57	23026		2	DISC, FRICTION - CLAMP PLATE
58	10-26065		1	SCREW, CLAMP PLATE TO SWIVEL BRACKET
59	13-21804		1	LOCKWASHER, CLAMP PLATE SCREW

STEERING HANDLE ASSEMBLY



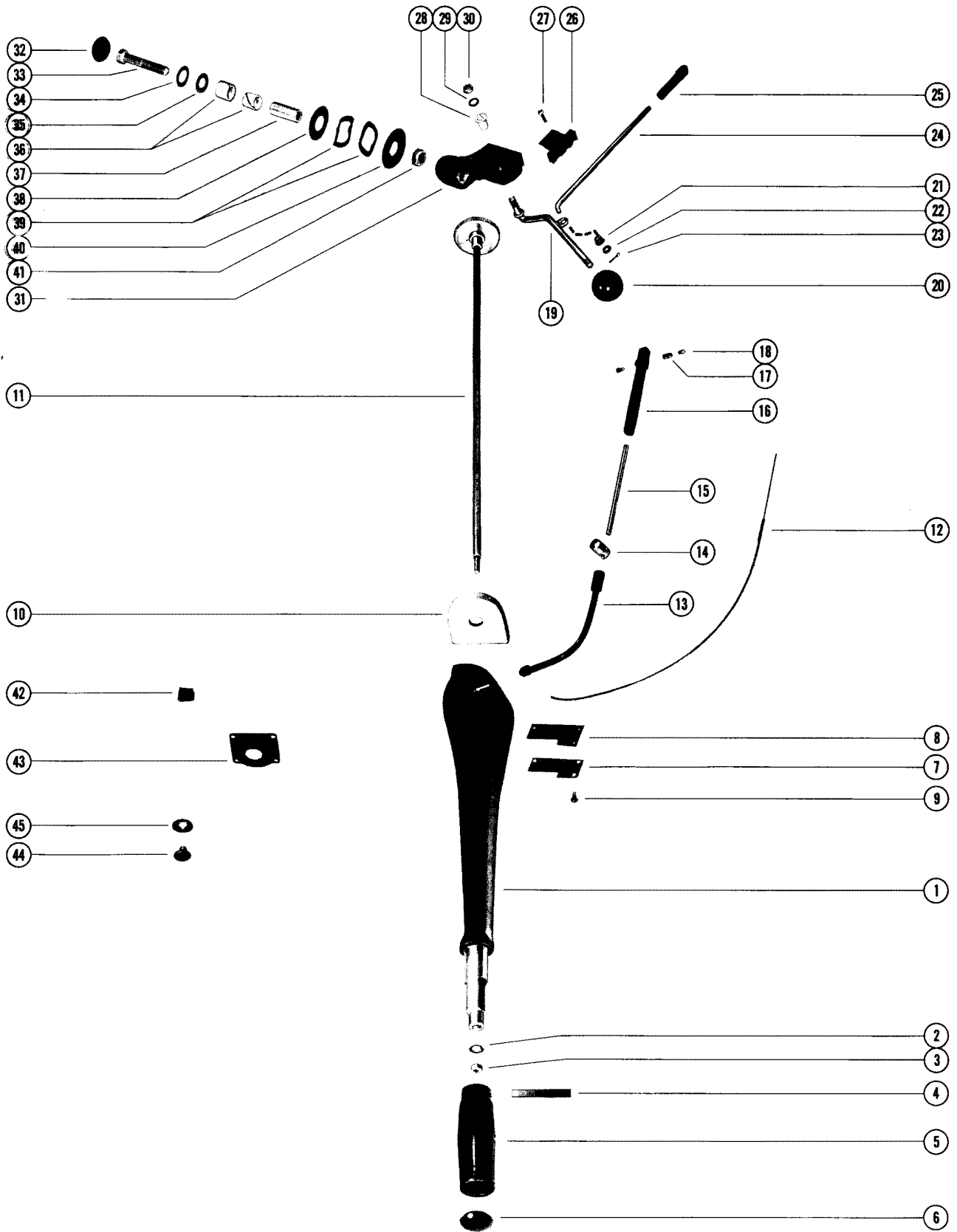
STEERING HANDLE ASSEMBLY

REF. NO.	PART NO.	SYM.	QTY.	DESCRIPTION
-	48400A1	▲	1	STEERING HANDLE ASSEMBLY
1	48405		1	ARM, STEERING HANDLE
2	12-21631		1	WASHER, STEERING HANDLE ARM
3	11-20664		1	NUT, STEERING HANDLE ARM
4	37-48569		1	DECAL, THROTTLE POSITION INDICATOR
5	48415		1	GRIP, STEERING HANDLE ARM
6	48416		1	CAP, STEERING HANDLE GRIP
7	48519		1	PLATE, COVER - DRIVE WHEEL
8	27-48518		1	GASKET, COVER PLATE
9	10-28192		4	SCREW, DRIVE WHEEL COVER PLATE FASTENING (1/2")
10	48414		1	HOUSING, DRIVE WHEEL - STEERING ARM HANDLE
11	48516A1		1	DRIVE WHEEL AND ROD ASSEMBLY
12	48520		1	CABLE, THROTTLE
13	32-485951		1	CONDUIT, CABLE (MERC 350 AND 400 ONLY) FOR MERC 500 MODELS, ORDER [A-32-48596] CONDUIT
14	20552		1	CONNECTOR, CONTROL LINKAGE
15	48570		1	TUBE, THROTTLE CABLE GUIDE
16	29880		1	GUIDE, THROTTLE CABLE
17	20007		1	ANCHOR, THROTTLE CABLE
18	10-20518		2	SCREW, THROTTLE CABLE ANCHOR
19	48521		1	SHIFT LEVER
20	37813		1	KNOB, SHIFT LEVER
21	23-48475		1	BUSHING, NYLON - SHIFT ROD (1/4" I. D.)
22	12-35950		1	WASHER, SHIFT ROD
23	18-25191		1	COTTER PIN, SHIFT ROD
24	49563		1	ROD, SHIFT
25	48419		1	ROD END, SHIFT ROD
26	48433		1	DETENT, SHIFT LEVER
27	10-32024		2	SCREW, SHIFT LEVER DETENT TO STEERING HANDLE BRACKET
28	23-48237		1	BUSHING, NYLON - SHIFT LEVER (3/8" I. D.)
29	12-37828		1	WASHER, SHIFT LEVER
30	11-34863		1	NUT, SHIFT LEVER TO STEERING HANDLE BRACKET
31	48404		1	BRACKET, STEERING HANDLE
32	48416		1	CAP, STEERING HANDLE BRACKET
33	10-48476		1	SCREW, STEERING HANDLE BRACKET TO STEERING HANDLE
34	12-48477		1	WASHER, S TEERING HANDLE BRACKET (.505 I. D.)
35	12-48526		1	WASHER, NYLON - STEERING HANDLE BRACKET (.630 I. D.)
36	23-28919		2	BUSHING, NYLON - STEERING HANDLE BRACKET (5/8" I. D.)
37	23-48525		1	SPACER, STEERING HANDLE BRACKET

▲ = [48400A 1] IS NO LONGER AVAILABLE. ORDER [48400A 2] WHICH INCLUDES [52148A 1] CO-PILOT KIT.

CONTINUED ON NEXT PAGE ➡

STEERING HANDLE ASSEMBLY

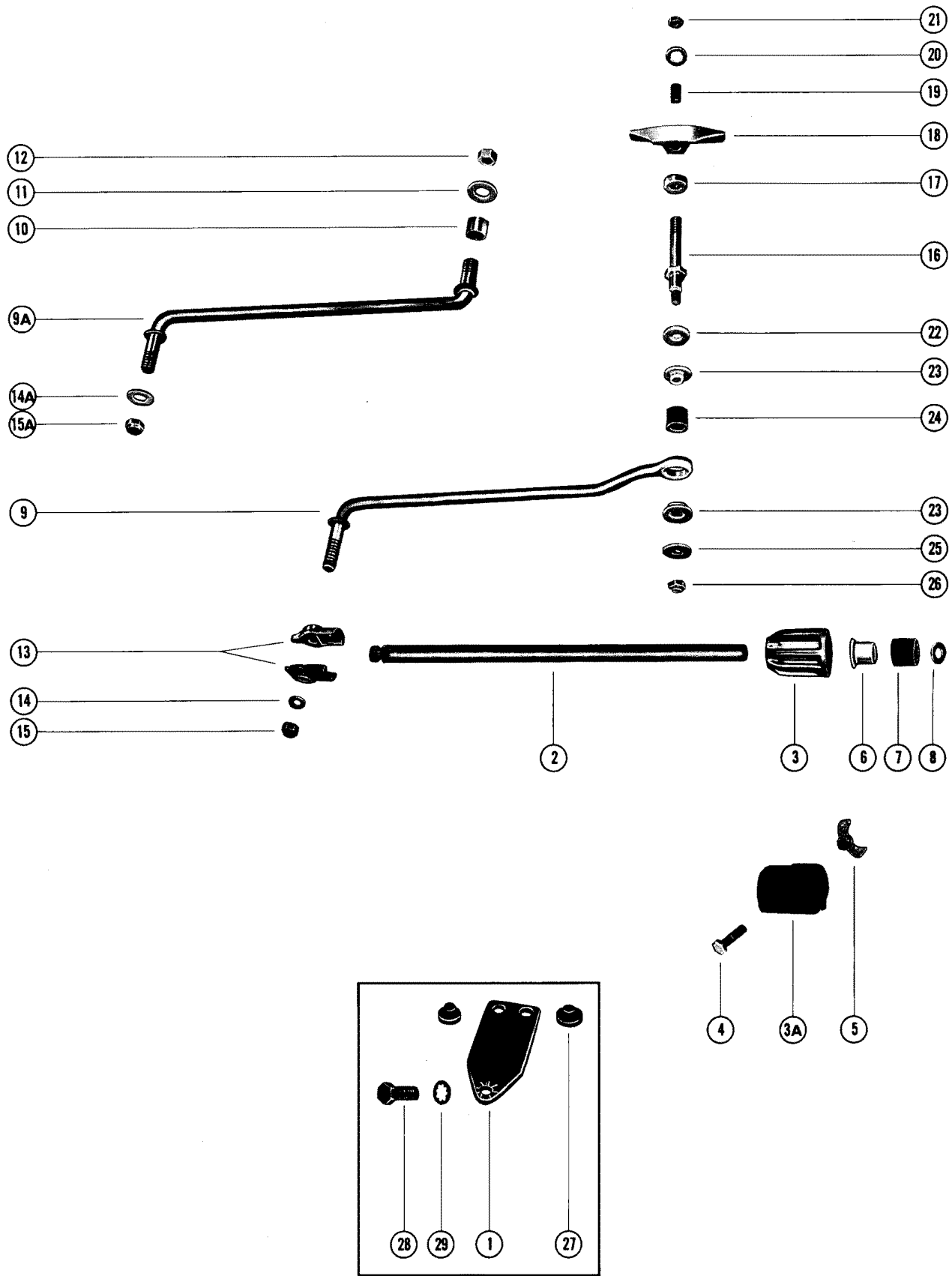


STEERING HANDLE ASSEMBLY

REF. NO.	PART NO.	SYM.	QTY.	DESCRIPTION
38	12-48527		1	WASHER, NYLON - STEERING HANDLE BRACKET (1 35/64" O. D.)
39	13-48478		2	WAVE WASHER, STEERING HANDLE BRACKET
40	12-49636		1	WASHER, NYLON - STEERING HANDLE BRACKET (1 3/4" O.D.)
41	11-20220		1	NUT, STEERING HANDLE BRACKET SCREW
42	54-22783		1	" S" CLIP, BOTTOM COWL - SHORTING SWITCH LEADS
43	45064		1	COVER, BOTTOM COWL - SHORTING SWITCH
44	19-35827		1	PLUG, BOTTOM COWL - SHORTING SWITCH HOLE
45	53-30428		1	FASTENER, PLUG TO BOTTOM COWL

NOTE: [A-48400A1] STEERING HANDLE ASSEMBLY MUST BE USED ON THE FOLLOWING ENGINES: MERC 350 - SERIAL #2300972 AND UP: MERC 400 (2CYLINIDER)-ALL: MERC 500-SERIAL #2305101 AND UP MERC 500 MODELS, ORDER [A-32-48596] CONDUIT

CO-PILOT REPLACEMENT ASSEMBLY

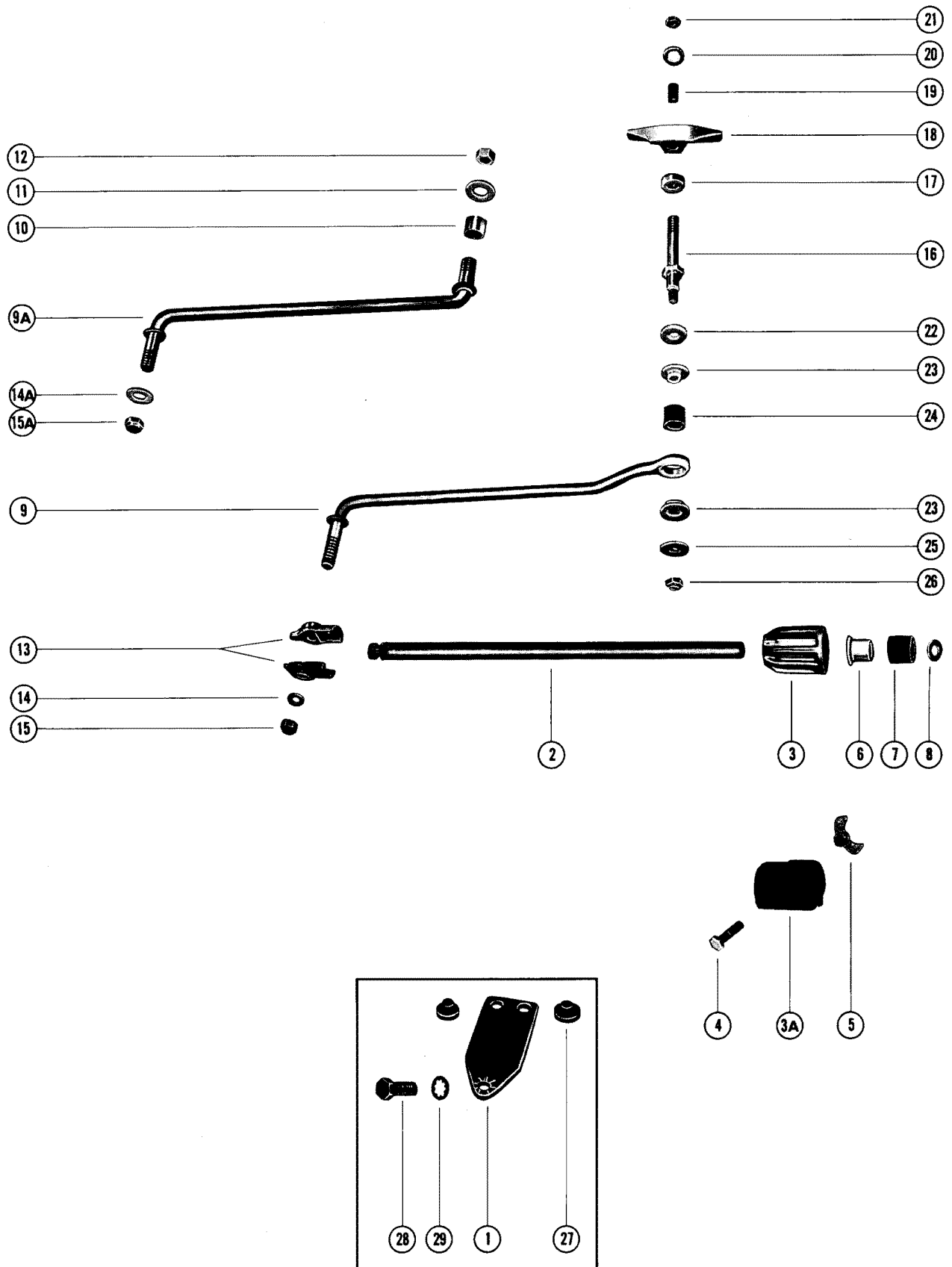


CO-PILOT REPLACEMENT ASSEMBLY

REF. NO.	PART NO.	SYM.	QTY.	DESCRIPTION
-	29738A3		1, , , ,	CO-PILOT REPLACEMENT ASSEMBLY (3/4" OD CABLE)
-	29738A4		, 1, , ,	CO-PILOT REPLACEMENT ASSEMBLY (7/8" OD CABLE)
-	29738A5		, , 1, ,	CO-PILOT REPLACEMENT ASSEMBLY (7/8" OD CABLE)
-	52148A1		, , , 1,	CO-PILOT REPLACEMENT ASSEMBLY
1	33984A2		, , , , 1	CO-PILOT REPLACEMENT ASSEMBLY
2	29739		1, , , ,	ROD, CO-PILOT - TILT TUBE
	29739A1		, 1, 1, ,	ROD ASSEMBLY, CO-PILOT - TILT TUBE
	52148		, , , 1,	ROD, CO-PILOT - TILT TUBE (NOT AS SHOWN)
3	11-29754		1, , , ,	NUT, COUPLER - CO-PILOT ROD (3/4" OD)
	11-31808		, 1, 1, ,	NUT, COUPLER - CO-PILOT ROD (7/8" OD)
3A	11-52155A1		, , , 1,	NUT ASSEMBLY, FRICTION - CO-PILOT ROD
4	10-36154		, , , 1,	SCREW, FRICTION NUT CLAMPING
5	11-52152		, , , 1,	WING NUT, FRICTION NUT SCREW
6	23-26850		1, 1, 1, ,	BUSHING, NYLON - COUPLER NUT
7	23-29741		1, 1, 1, ,	SLEEVE, RUBBER - COUPLER NUT
8	12-31809		, 1, , ,	WASHER, COUPLER NUT
9	29738A1		1, 1, , ,	ROD ASSEMBLY, STEERING LINK
	38842		, , 1, ,	ROD, STEERING LINK (NOT AS SHOWN)
9A	52150		, , , 1,	ROD, STEERING LINK
10	23-52151		, , , 1,	BUSHING, STEERING LINK ROD
11	12-20722		, , , 1,	WASHER, STEERING LINK ROD
12	11-20102		, , , 1,	NUT, STEERING LINK ROD
13	25888		2, 2, , ,	COUPLER, HALVES - CO-PILOT ROD TO STEERING LINK ROD
	27827		, , 2, ,	COUPLER, HALVES - CO-PILOT ROD TO STEERING LINK ROD
14	12-20084		1, 1, , ,	WASHER, STEERING LINK ROD
	12-20553		, , 1, ,	WASHER, STEERING LINK ROD
14A	12-20722		, , , 1,	WASHER, STEERING LINK ROD
15	11-25594		1, 1, , ,	NUT, STEERING LINK ROD TO COUPLER HALVES
	11-20509		, , 1, ,	NUT, STEERING LINK ROD TO COUPLER HALVES
15A	11-20102		, , , 1,	NUT, STEERING LINK ROD
16	25994		1, 1, , ,	PIN, PIVOT - STEERING LINK ROD TO BOTTOM COWL
17	23-27818		1, 1, , ,	SPACER, PIVOT PIN TO BRACKET
18	28390		1, 1, , ,	BRACKET, PIVOT PIN TO BOTTOM COWL
19	23-30079		1, 1, , ,	SPACER, PIN THRU BOTTOM COWL
20	12-20722		1, 1, , ,	WASHER, PIVOT PIN
21	11-25594		1, 1, , ,	NUT, PIVOT PIN TO BOTTOM COWL
22	12-25909		1, 1, , ,	WASHER, PIVOT PIN - UPPER
	12-25909		, , 2, ,	WASHER, PIVOT PIN - UPPER
23	23-25907		2, 2, 2, ,	BUSHING, NYLON - PIVOT PIN TO STEERING LINK ROD
24	23-25915		1, 1, 1, ,	BUSHING, RUBBER - PIVOT PIN TO STEERING LINK ROD

CONTINUED ON NEXT PAGE ➡

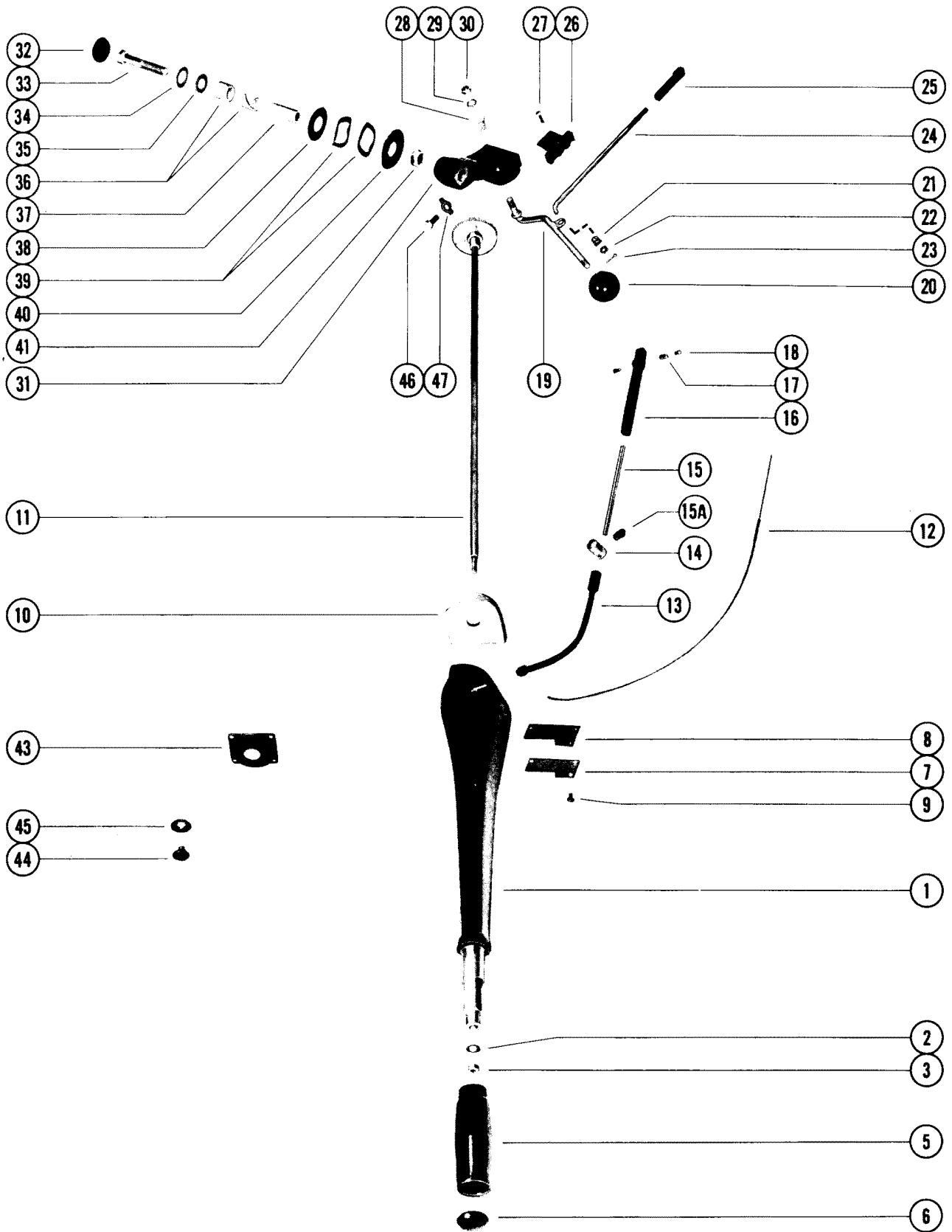
CO-PILOT REPLACEMENT ASSEMBLY



CO-PILOT REPLACEMENT ASSEMBLY

REF. NO.	PART NO.	SYM.	QTY.	DESCRIPTION
25	12-25908		1,1,,,	WASHER, PIVOT PIN - LOWER
26	11-20361		1,1,,,	NUT, PIVOT PIN TO STEERING LINK ROD
27	23026		,,,2	DISC, FRICTION - CLAMP PLATE
28	10-26065		,,,1	SCREW, CLAMP PLATE TO SWIVEL BRACKET
29	10-21804		,,,1	LOCKWASHER,CLAMP PLATE FASTENING SCREW

STEERING HANDLE ASSEMBLY

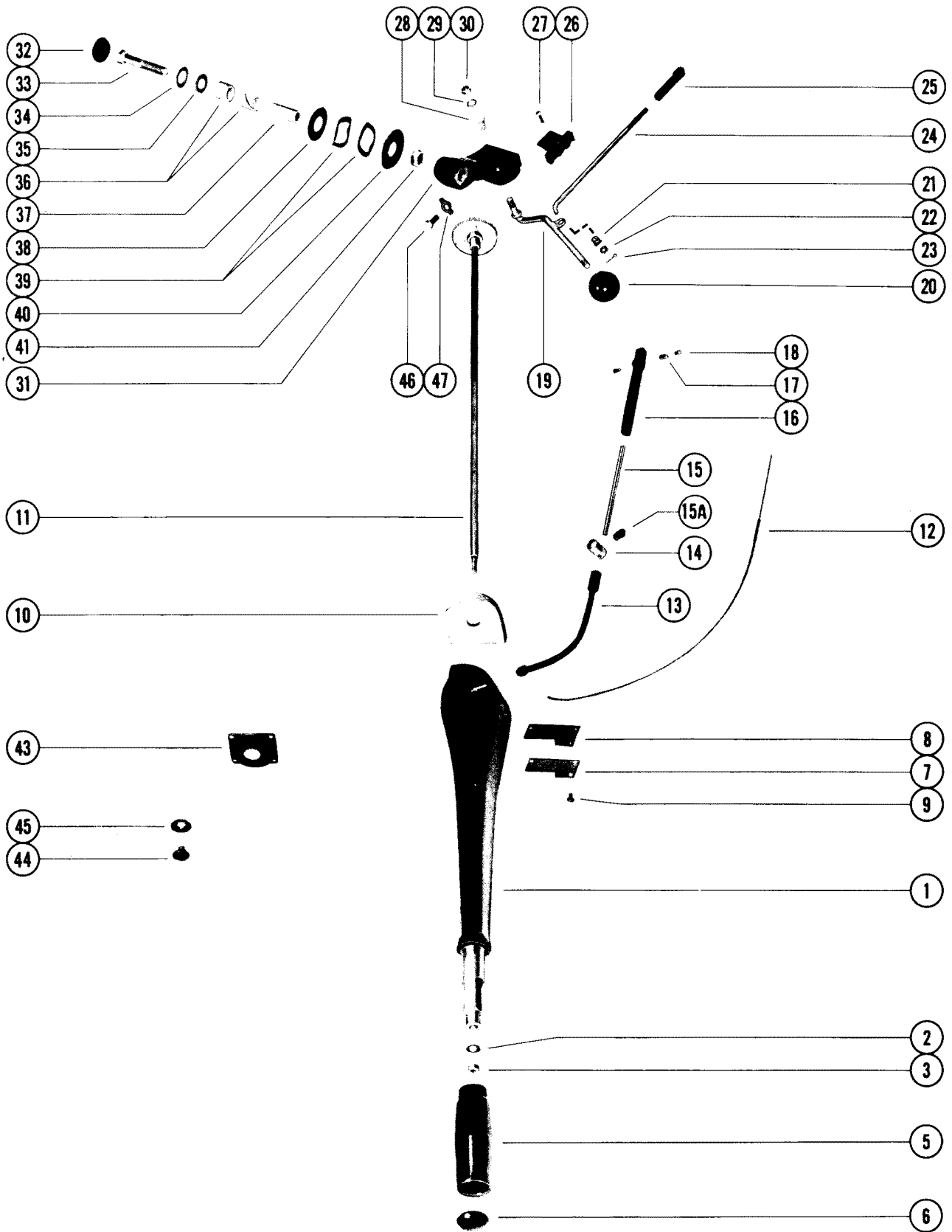


STEERING HANDLE ASSEMBLY

REF. NO.	PART NO.	SYM.	QTY.	DESCRIPTION
-	78551A3		1,,	STEERING HANDLE ASSEMBLY
-	78551A4		,1,	STEERING HANDLE ASSEMBLY
-	78551A5		,,1	STEERING HANDLE ASSEMBLY
1	48405		1,1,1	ARM, STEERING HANDLE
2	12-21631		1,1,1	WASHER, STEERING HANDLE ARM
3	11-20664		1,1,1	NUT, STEERING HANDLE ARM
5	58192A1		1,1,1	GRIP, STEERING HANDLE ARM
6	48416		1,1,1	CAP, STEERING HANDLE GRIP
7	48519		1,1,1	PLATE, COVER - DRIVE WHEEL
8	27-48518		1,1,1	GASKET, COVER PLATE
9	10-28192		4,4,4	SCREW, DRIVE WHEEL COVER PLATE FASTENING (1/2")
10	48414		1,1,1	HOUSING, DRIVE WHEEL - STEERING ARM HANDLE
11	48516A1		1,1,1	DRIVE WHEEL AND ROD ASSEMBLY
12	48520		1,1,1	CABLE, THROTTLE
13	78551-2		1,1,	CONDUIT, CABLE
	78551-1		,,1	CONDUIT, CABLE
14	20552		1,,	CONNECTOR, CONTROL LINKAGE
	89578		,1,	CONNECTOR, CONTROL LINKAGE
	89613		,,1	CONNECTOR, CONTROL LINKAGE
15	48570		1,,	TUBE, THROTTLE CABLE GUIDE
	89566		,1,1	TUBE, THROTTLE CABLE GUIDE
15A	10-89601		,1,1	SCREW, SET - THROTTLE CABLE GUIDE TUBE
16	29880		1,1,1	GUIDE, THROTTLE CABLE
17	20007		1,1,1	ANCHOR, THROTTLE CABLE
18	10-20518		2,2,2	SCREW, THROTTLE CABLE ANCHOR
19	48521		1,1,1	SHIFT LEVER
20	37813		1,1,1	KNOB, SHIFT LEVER
21	23-48475		1,1,1	BUSHING, NYLON - SHIFT ROD (1/4" I D)
22	12-35950		1,1,1	WASHER, SHIFT ROD
23	18-25191		2,2,2	COTTER PIN, SHIFT ROD
24	49563		1,1,1	ROD, SHIFT
25	48419		1,1,1	ROD END, SHIFT ROD
26	78812A1		1,1,1	DETENT, SHIFT LEVER
27	10-48409		2,2,2	SCREW, SHIFT LEVER DETENT TO STEERING HANDLE BRACKET
28	23-48237		1,1,1	BUSHING, NYLON - SHIFT LEVER (3/8" I.D.)
29	12-37828		1,1,1	WASHER, SHIFT LEVER
30	11-34863		1,1,1	NUT, SHIFT LEVER TO STEERING HANDLE BRACKET
31	48404		1,1,1	BRACKET, STEERING HANDLE
32	48416		1,1,1	CAP, STEERING HANDLE BRACKET
33	10-48476		1,1,1	SCREW, STEERING HANDLE BRACKET TO STEERING HANDLE
34	12-48477		1,1,1	WASHER, STEERING HANDLE BRACKET (505 I.D.)

CONTINUED ON NEXT PAGE ➡

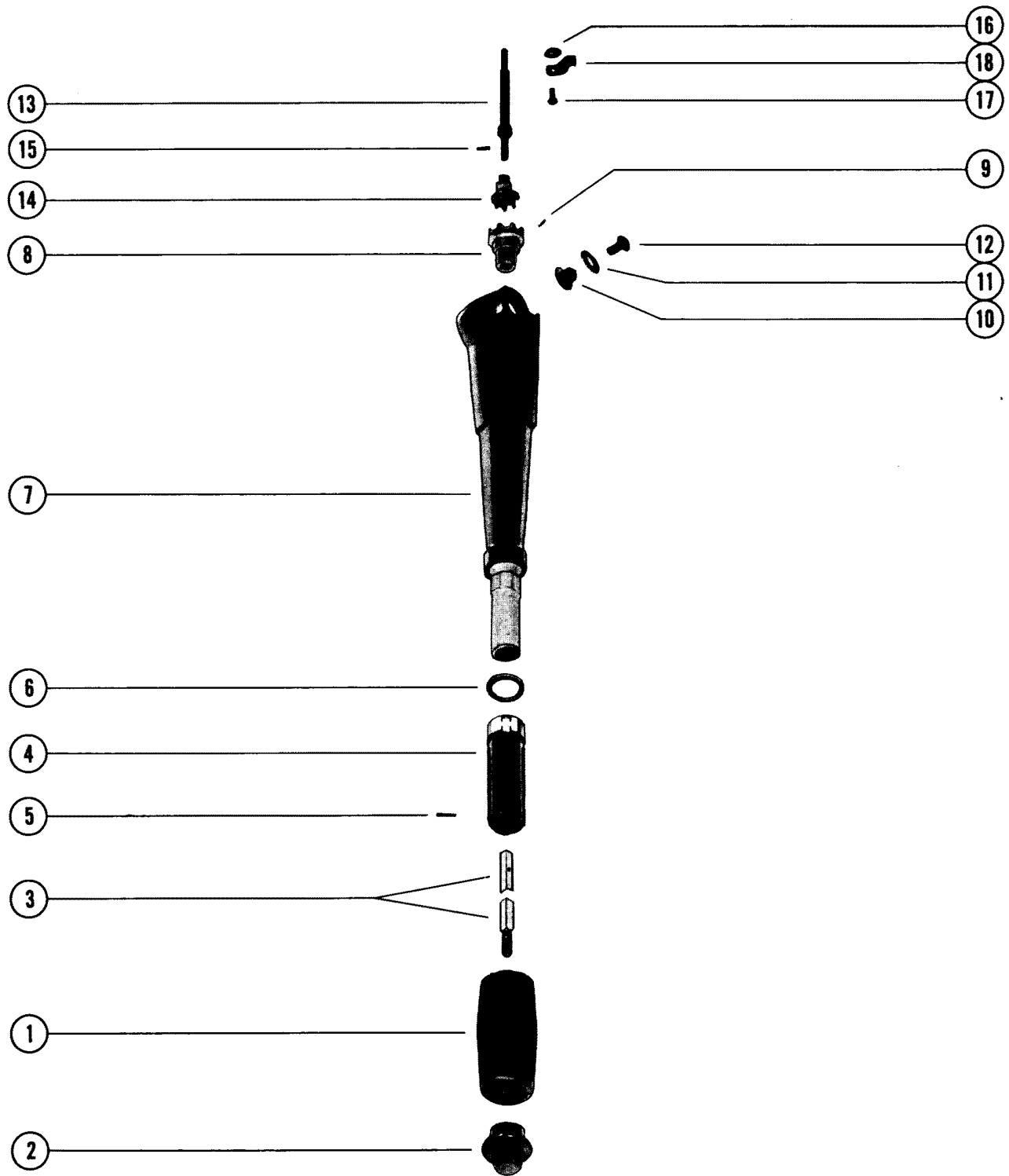
STEERING HANDLE ASSEMBLY



STEERING HANDLE ASSEMBLY

REF. NO.	PART NO.	SYM.	QTY.	DESCRIPTION
35	12-48526		1,1,1	WASHER, NYLON - STEERING HANDLE BRACKET (630 I.D.)
36	23-28919		2,2,2	BUSHING, NYLON - STEERING HANDLE BRACKET (5/8" I.D.)
37	23-48525		1,1,1	SPACER, STEERING HANDLE BRACKET
38	12-48527		1,1,1	WASHER, NYLON - STEERING HANDLE BRACKET (1 35/64" O.D.)
39	13-48478		2,2,2	WAVE WASHER, STEERING HANDLE BRACKET
40	12-49636		1,1,1	WASHER, NYLON - STEERING HANDLE BRACKET (1 3/4" O.D.)
41	11-20220		1,1,1	NUT, STEERING HANDLE BRACKET SCREW
43	45064		1,1,1	COVER, BOTTOM COWL - SHORTING SWITCH
44	19-35827		1,1,1	PLUG, BOTTOM COWL - SHORTING SWITCH HOLE
45	11-30428		1,1,1	FASTENER, PLUG TO BOTTOM COWL
46	10-35786		2,2,2	SCREW, BRACKET TO ENGINE (1")
47	14-31828		2,2,2	TAB WASHER, BRACKET SCREW
-	52148A1		1,1,1	CO-PILOT ASSEMBLY

STEERING HANDLE ASSEMBLY



STEERING HANDLE ASSEMBLY

REF. NO.	PART NO.	SYM.	QTY.	DESCRIPTION
-	60850A9		1	STEERING HANDLE KIT
1	60854		1	GRIP, HANDLE - THROTTLE
2	62251		1	CAP, HANDLE THROTTLE
3	66393		1	SHAFT, THROTTLE
4	66394A1		1	HANDLE ASSEMBLY, THROTTLE SHAFT
5	17-46152		1	PIN, THROTTLE SHAFT
6	12-62252		1	WASHER, THROTTLE HANDLE TO STEERING ARM
7	60850		1	ARM, STEERING HANDLE
8	43-60852		1	GEAR, BALL THROTTLE SHAFT
9	17-27088		1	PIN, BALL GEAR TO THROTTLE SHAFT
10	48003		2	PIVOT, STEERING HANDLE TO BRACKET
11	15-48002015		AR	SHIM, HANDLE PIVOT TO BRACKET (.015)
12	10-64074		2	SCREW, HANDLE TO ARM BRACKET (5/8")
13	60857A2		1	UNIVERSAL JOINT ASSEMBLY
14	43-60852		1	GEAR, BALL - UNIVERSAL JOINT
15	17-77564		1	PIN, BALL GEAR TO UNIVERSAL JOINT
16	12-30164		2	WASHER, DETENT SPRING SCREW
17	10-62233		2	SCREW, DETENT SPRING TO STEERING ARM BRACKET (5/8")
18	24-72847		2	SPRING, DETENT - STEERING HANDLE

PARTS INDEX

Part Number	Description	Pg.	Ref. No.	Part Number	Description	Pg.	Ref. No.
20007	ANCHOR, THROTTLE CABLE	29	17	25285	SUPPORT, CROSS SHAFT		
20007	ANCHOR, THROTTLE CABLE	37	17		BUSHING	5	22
20552	CONNECTOR, CONTROL LINKAGE	29	14	25888	COUPLER, HALVES - CO-PILOT ROD TO STEERING LINK ROD . . .	33	13
20552	CONNECTOR, CONTROL LINKAGE	37	14	25994	PIN, PIVOT - STEERING LINK ROD TO BOTTOM COWL	33	16
20591A1	HANDLE, GRIP AND SHAFT ASSEMBLY	5	1	26711	PIVOT, STEERING HANDLE TO BRACKET	17	28
20591A11	HANDLE, GRIP AND SHAFT ASSEMBLY	5	1	27763	GRIP, RUBBER - STEERING HANDLE BODY	17	1
20591A11	STEERING HANDLE ASSEMBLY	21	1	27827	COUPLER, HALVES - CO-PILOT ROD TO STEERING LINK ROD	33	13
20591A11	STEERING HANDLE ASSEMBLY	25	1	28390	BRACKET, PIVOT PIN TO BOTTOM COWL	33	18
20591A12	STEERING HANDLE ASSEMBLY	5	-	28689	BRACKET, INSIDE STEERING	15	1
20591A13	STEERING HANDLE ASSEMBLY, COMPLETE	21	-	28689A1	INSIDE STEERING BRACKET ASSEMBLY	15	-
20591A13	STEERING HANDLE ASSEMBLY, COMPLETE	25	-	28691	CONNECTOR, INSIDE STEERING BRACKET	15	2
20731A1	TUBE ASSEMBLY, STEERING HANDLE	5	4	29429A1	TUBE ASSEMBLY, STEERING HANDLE	5	4
20732	RING, POINTER - STEERING HANDLE TUBE	5	5	29563A1	STEERING HANDLE BRACKET ASSEMBLY	5	26
20735	ELBOW, STEERING HANDLE	5	9	29686	SWITCH, SHORTING - W/LEAD WIRES	5	27
20737	PLUG, FRICTION - ELBOW AND BRACKET	5	16	29738A1	ROD ASSEMBLY, STEERING LINK	33	9
20737	PLUG, FRICTION - STEERING HANDLE BRACKET AND ELBOW	21	40	29738A3	CO-PILOT REPLACEMENT ASSEMBLY (3/4" OD CABLE)	33	-
20737	PLUG, FRICTION - STEERING HANDLE BRACKET AND ELBOW	25	30	29738A4	CO-PILOT REPLACEMENT ASSEMBLY (7/8" OD CABLE)	33	-
20744	PLATE, ELBOW COVER	5	17	29738A5	CO-PILOT REPLACEMENT ASSEMBLY (7/8" OD CABLE)	33	-
20980	KNOB, SHIFT CONTROL LEVER	7	43	29739	ROD, CO-PILOT - TILT TUBE	33	2
20980	KNOB, SHIFT CONTROL LEVER	17	33	29739A1	ROD ASSEMBLY, CO-PILOT - TILT TUBE	33	2
20980	KNOB, SHIFT LEVER	23	54	29822A1	STEERING HANDLE ASSEMBLY, COMPLETE	5	-
21105	CONNECTOR, SHORTING SWITCH	5	29	29880	GUIDE, THROTTLE CABLE	29	16
23026	DISC, FRICTION - CLAMP PLATE	19	36	29880	GUIDE, THROTTLE CABLE	37	16
23026	DISC, FRICTION - CLAMP PLATE	27	57	30235	YOKE, STEERING HANDLE SHAFT	17	12
23026	DISC, FRICTION - CLAMP PLATE	35	27	30970	BOOT, RUBBER - THROTTLE CONTROL SHAFT	17	16
25262A1	STEERING HANDLE ASSEMBLY, COMPLETE	5	-	31001	INDICATOR, SPEED AND SHIFT - STEERING HANDLE	17	3
25270A1	STEERING HANDLE BRACKET ASSEMBLY	5	26	31200	SOCKET, THROTTLE CONTROL	17	19
25272A1	SHIFT CONTROL LEVER ASSEMBLY	7	42	33404	BODY AND SHAFT, STEERING HANDLE	17	2
25274A1	CROSS SHAFT ASSEMBLY	5	19	33405A1	STEERING HANDLE ASSEMBLY	17	7
25275A1	MAGNETO CONTROL LEVER ASSEMBLY	7	36				
25282	ROD, LINK - SHIFT CONTROL	7	41				
25283	ROD, LINK - MAGNETO CONTROL	7	40				

PARTS INDEX

Part Number	Description	Pg.	Ref. No.	Part Number	Description	Pg.	Ref. No.
33405A2	STEERING HANDLE ASSEMBLY	17	-	38855	BUTTON, NYLON - STEERING LEVER BRACKET	23	45
33535A1	THROTTLE CONTROL SLLAFT ASSEMBLY	17	14	39926A1	STEERING HANDLE ASSEMBLY, COMPLETE	25	-
33984	PLATE, CLAMP	19	35	45025	BRACKET, STEERING HANDLE	25	27
33984	PLATE, CLAMP- CO-PILOT	27	56	45026	COVER, STEERING BRACKET	27	48
33984A2	CO-PILOT REPLACEMENT ASSEMBLY	33	1	45035	ARM, THROTTLE - SHAFT AND GEAR	25	16
34129A	STEERING HANDLE ASSEMBLY, COMPLETE	17	-	45043A1	SHIFT LEVER ASSEMBLY	25	38
34135	LEVER, SHIFT CONTROL	17	32	45058A1	SHAFT AND GEAR ASSEMBLY, STEERING ELBOW	25	11
34138	BRACKET, THROTTLE CONTROL	17	18	45062A1	SHIFT ROD ASSEMBLY	27	42
34152A3	STEERING BRACKET ASSEMBLY	13	1	45064	COVER, BOTTOM COWL - SHORTING SWITCH	27	52
34745A2	STEERING BRACKET ASSEMBLY	11	1	45064	COVER, BOTTOM COWL - SHORTING SWITCH	31	43
34746A2	STEERING BRACKET ASSEMBLY	11	1	45064	COVER, BOTTOM COWL - SHORTING SWITCH	39	43
35570	BRACKET, STEERING ARM	17	15	45067	PLATE, DETENT - SHIFT LEVER	25	39
36182A1	STEERING HANDLE ASSEMBLY, COMPLETE	5	-	45072	ROD, THROTTLE	25	20
36216A1	STEERING HANDLE BRACKET ASSEMBLY	5	26	48003	PIVOT, STEERING HANDLE TO BRACKET	41	10
37813	KNOB, SHIFT LEVER	29	20	48400A1	STEERING HANDLE ASSEMBLY	29	-
37813	KNOB, SHIFT LEVER	37	20	48404	BRACKET, STEERING HANDLE	29	31
38445A1	STEERING HANDLE ASSEMBLY, COMPLETE	21	-	48404	BRACKET, STEERING HANDLE	37	31
38464	ELBOW, STEERING HANDLE	21	9	48405	ARM, STEERING HANDLE	29	1
38464	ELBOW, STEERING HANDLE	25	9	48405	ARM, STEERING HANDLE	37	1
38475	ROD END, SHIFT LINK ROD	23	60	48414	HOUSING, DRIVE WHEEL - STEERING ARM HANDLE	29	10
38475	ROD END, SHIFT ROD	27	44	48414	HOUSING, DRIVE WHEEL - STEERING ARM HANDLE	37	10
38475	ROD END, THROTTLE LINK ROD	21	21	48415	GRIP, STEERING HANDLE ARM	29	5
38475	ROD END, THROTTLE ROD	25	22	48416	CAP, STEERING HANDLE BRACKET	29	32
38479A1	GEAR AND SHAFT ASSEMBLY	21	11	48416	CAP, STEERING HANDLE BRACKET	37	32
38480	ARM THROTTLE - GEAR AND SHAFT	21	17	48416	CAP, STEERING HANDLE GRIP	37	6
38481A1	LEVER ASSEMBLY, SHIFT	23	53	48416	CAP, STEERING HANDLE GRIP	29	6
38482	BRACKET, STEERING LEVER	21	37	48419	ROD END, SHIFT ROD	29	25
38483	END COVER, GEAR AND SHAFT (STEERING ELBOW)	21	14	48419	ROD END, SHIFT ROD	37	25
38483	END COVER, SHAFT AND GEAR - STEERING ELBOW	25	14	48433	DETENT, SHIFT LEVER	29	26
38490	SWITCH, SHORTING - BAFFLE PLATE	21	28	48516A1	DRIVE WHEEL AND ROD ASSEMBLY	29	11
38491	PLATE, BAFFLE - BOTTOM COWL	21	31	48516A1	DRIVE WHEEL AND ROD ASSEMBLY	37	11
38493	LINK ROD, THROTTLE	21	19	48519	PLATE, COVER - DRIVE WHEEL	29	7
38494	LINK ROD, SHIFT	23	58	48519	PLATE, COVER - DRIVE WHEEL	37	7
38495	COVER, STEERING BRACKET	23	64				
38842	ROD, STEERING LINK (NOT AS SHOWN)	33	9				
38843	BRACKET, SUPPORT-STEERING	21	27				

PARTS INDEX

Part Number	Description	Pg.	Ref. No.	Part Number	Description	Pg.	Ref. No.
48520	CABLE, THROTTLE	29	12	10-20608	SCREW, FRICTION PLUG - STEERING BRACKET AND ELBOW	23	42
48520	CABLE, THROTTLE	37	12				
48521	SHIFT LEVER	29	19				
48521	SHIFT LEVER	37	19	10-20608	SCREW, FRICTION PLUG - STEERING HANDLE BRACKET AND ELBOW	25	32
48570	TUBE, THROTTLE CABLE GUIDE	29	15				
48570	TUBE, THROTTLE CABLE GUIDE	37	15	10-20639	SCREW, STEERING BRACKET ATTACHING	9	-
49563	ROD, SHIFT	29	24	10-20646	SCREW, COVER TO STEERING BRACKET (5/8")	25	33
49563	ROD, SHIFT	37	24				
52148	ROD, CO-PILOT - TILT TUBE (NOT AS SHOWN)	33	2	10-20705	SCREW, CONNECTOR TO STEERING BRACKET	15	3
52148A1	CO-PILOT ASSEMBLY	39	--	10-20738	SCREW, COVER PLATE TO ELBOW (5/8")	5	18
52148A1	CO-PILOT REPLACEMENT ASSEMBLY	33	-	10-21091	SCREW, STEERING HANDLE TO ELBOW (1 1/8")	5	10
52150	ROD, STEERING LINK	33	9A	10-21091	SCREW, STEERING HANDLE TO ELBOW (1 1/8")	21	33
58192A1	GRIP, STEERING HANDLE ARM	37	5	10-21091	SCREW, STEERING HANDLE TO STEERING ELBOW (1 1/8")	25	23
60850	ARM, STEERING HANDLE	41	7	10-21091	SCREW, STEERING HANDLE TO STEERING ELBOW (1 1/8")	25	23
60850A9	STEERING HANDLE KIT	41	-	10-21091	SCREW, STEERING HANDLE TO STEERING ELBOW (1 1/8")	25	23
60854	GRIP, HANDLE - THROTTLE	41	1	10-21339	SCREW, HANDLE BRACKET TO BOTTOM COWL (1 3/8")	5	31
60857A2	UNIVERSAL JOINT ASSEMBLY	41	13	10-21449	SCREW, HANDLE BRACKET TO BOTTOM COWL (2")	7	46
62251	CAP, HANDLE THROTTLE	41	2	10-21449	SCREW, HANDLE BRACKET TO BOTTOM COWL (2")	7	46
66393	SHAFT, THROTTLE	41	3	10-21489	SCREW, HANDLE BRACKET TO BOTTOM COWL (1 3/4")	7	46
66394A1	HANDLE ASSEMBLY, THROTTLE SHAFT	41	4	10-21804	LOCKWASHER, CLAMP PLATE FASTENING SCREW	35	29
78551-1	CONDUIT, CABLE	37	13	10-21937	SCREW, STEERING BRACKET TO SADDLE (2")	15	8
78551-2	CONDUIT, CABLE	37	13	10-22290	SCREW, DRIVE - INDICATOR TO STEERING HANDLE BODY	17	4
78551A3	STEERING HANDLE ASSEMBLY	37	-	10-22928	SCREW, SET - SHIFT LEVER DETENT PIN	23	52
78551A4	STEERING HANDLE ASSEMBLY	37	-	10-24644	SCREW, COVER TO STEERING BRACKET (1 3/8")	27	50
78551A5	STEERING HANDLE ASSEMBLY	37	-	10-25205	SCREW, SUPPORT TO HANDLE BRACKET (3/4")	5	25
78812A1	DETENT, SHIFT LEVER	37	26	10-25279	SCREW, STOP - STEERING COVER	23	67
89566	TUBE, THROTTLE CABLE GUIDE	37	15	10-25279	SCREW, SUPPORT TO HANDLE BRACKET (1")	5	25
89578	CONNECTOR, CONTROL LINKAGE	37	14	10-26065	SCREW, CLAMP PLATE TO SWIVEL BRACKET	19	37
89613	CONNECTOR, CONTROL LINKAGE	37	14	10-26065	SCREW, CLAMP PLATE TO SWIVEL BRACKET	27	58
--3839A1	STEERING BRACKET ASSEMBLY	3	1	10-26065	SCREW, CLAMP PLATE TO SWIVEL BRACKET	35	28
--52992A1	STEERING BRACKET ASSEMBLY	3	1	10-28192	SCREW, DRIVE WHEEL COVER PLATE FASTENING (1/2")	29	9
10-20031	SCREW, STEERING HANDLE LOCATING (1/2")	5	12				
10-20090	SCREW, STEERING BRACKET TO STEERING ARM	13	2				
10-20100	SCREW, COVER TO STEERING BRACKET (1/2")	23	65				
10-20518	SCREW, THROTTLE CABLE ANCHOR	29	18				
10-20518	SCREW, THROTTLE CABLE ANCHOR	37	18				
10-20608	SCREW, FRICTION PLUG - ELBOW AND BRACKET	5	14				

PARTS INDEX

Part Number	Description	Pg.	Ref. No.	Part Number	Description	Pg.	Ref. No.
10-28192	SCREW, DRIVE WHEEL COVER PLATE FASTENING (1/2")	37	9	10-89601	SCREW, SET - THROTTLE CABLE GUIDE TUBE	37	15A
10-28592	SCREW, STEERING HANDLE TO ARM BRACKET	17	31	11-20013	NUT, CHECK UNIT ADAPTOR FASTENING SCREW	15	7
10-28635	SCREW, STEERING BRACKET TO STEERING ARM BRACKET	11	2	11-20102	NUT, CONNECTOR FASTENING SCREW	15	4
10-28663	SCREW, THROTTLE CONTROL SHAFT TO BRACKET	17	17	11-20102	NUT, SHIFT LEVER TO STEERING HANDLE BRACKET	27	41
10-30155	SCREW, STEERING BRACKET ATTACHING	9	-	11-20102	NUT, STEERING LINK ROD	33	12
10-30720	SCREW, THROTTLE CONTROL BRACKET TO BOTTOM COWL	17	26	11-20102	NUT, STEERING LINK ROD	33	15A
10-31002	SCREW, SET - SPEED AND SHIFT INDICATOR	17	5	11-20102	NUT, THROTTLE ARM TO SHAFT AND GEAR	25	19
10-31834	SCREW, HANDLE BRACKET TO BOTTOM COWL (1 7/8")	5	31	11-20220	NUT, STEERING HANDLE BRACKET SCREW	31	41
10-32024	SCREW, SHIFT LEVER DETENT TO STEERING HANDLE BRACKET	29	27	11-20220	NUT, STEERING HANDLE BRACKET SCREW	39	41
10-32571	SCREW, SET - STEERING ELBOW	25	25	11-20361	NUT, PIVOT PIN TO STEERING LINK ROD	35	26
10-34352	SCREW, BRACKET TO STEERING ARM	3	2	11-20361	NUT, STEERING HANDLE CLAMPING SCREW	5	11
10-35786	SCREW, BRACKET TO ENGINE (1")	39	46	11-20361	NUT, STEERING HANDLE SCREW	21	34
10-35871	SCREW, STEERING BRACKET TO ENGINE (1 1/2")	23	46	11-20361	NUT, STEERING HANDLE SCREW	25	24
10-358711	SCREW, LINK ROD TO STEERING BRACKET (1 1/2)	21	25	11-20509	NUT, STEERING BRACKET SCREW	3	3
10-36154	SCREW, FRICTION NUT CLAMPING	33	4	11-20509	NUT, STEERING BRACKET SCREW	13	3
10-37909	SCREW, BRACKET TO STEERING ARM	3	2	11-20509	NUT, STEERING LINK ROD TO COUPLER HALVES	33	15
10-38477	SCREW, SET - SHIFT LEVER	23	55	11-205091	NUT, LINK ROD SCREW	21	26
10-38477	SCREW, SET - SHIFT LEVER DETENT PIN	25	37	11-20586	NUT, COVER TO STEERING BRACKET SCREW	27	51
10-38488	SCREW, SET - STEERING LEVER BRACKET	23	43	11-20664	NUT, STEERING HANDLE ARM	29	3
10-38925	SCREW, SET- STEERING ELBOW	21	35	11-20664	NUT, STEERING HANDLE ARM	37	3
10-48409	SCREW, SHIFT LEVER DETENT TO STEERING HANDLE BRACKET	37	27	11-20739	NUT, CROSS SHAFT BUSHING TO SUPPORT	5	24
10-48476	SCREW, STEERING HANDLE BRACKET TO STEERING HANDLE	29	33	11-20890	NUT, STEERING COVER STOP SCREW	23	68
10-48476	SCREW, STEERING HANDLE BRACKET TO STEERING HANDLE	37	33	11-20890	NUT, STEERING ELBOW SET SCREW	21	36
10-62233	SCREW, DETENT SPRING TO STEERING ARM BRACKET (5/8")	41	17	11-21528	NUT, SHIFT LEVER TO BRACKET	23	57
				11-21528	NUT, STEERING BRACKET ATTACHING SCREW	9	-
				11-21869	NUT, JAM - SHIFT LINK ROD	23	59
				11-21869	NUT, JAM - SHIFT ROD	27	43
				11-21869	NUT, JAM - THROTTLE LINK ROD	21	20
				11-21869	NUT, JAM - THROTTLE ROD (1/4")	25	21
				11-22046	NUT, JAM - STEERING LEVER BRACKET SET SCREW	23	44
				11-22178	NUT, STEERING BRACKET ATTACHING SCREW	9	-

PARTS INDEX

Part Number	Description	Pg.	Ref. No.	Part Number	Description	Pg.	Ref. No.
11-22339	NUT, STEERING ELBOW TO STEERING BRACKET . . .	21	39	12-21631	WASHER, STEERING HANDLE ARM	29	2
11-22339	NUT, STEERING ELBOW TO STEERING BRACKET . . .	25	29	12-21631	WASHER, STEERING HANDLE ARM	37	2
11-25594	NUT, BRACKET FASTENING SCREW	7	34	12-25828	WASHER, HANDLE BRACKET FASTENING SCREW	7	47
11-25594	NUT, PIVOT PIN TO BOTTOM COWL	33	21	12-25828	WASHER, HANDLE BRACKET FASTENING SCREW	7	47
11-25594	NUT, STEERING LINK ROD TO COUPLER HALVES . .	33	15	12-25866	WASHER, STEERING BRACKET ATTACHING SCREW	9	-
11-29250	NUT, HANDLE BRACKET FASTENING SCREW	7	50	12-25908	WASHER, PIVOT PIN - LOWER	35	25
11-29250	NUT, HANDLE BRACKET FASTENING SCREW	7	50	12-25909	WASHER, PIVOT PIN - UPPER	33	22
11-29754	NUT, COUPLER - CO-PILOT ROD (3/4" OD)	33	3	12-25909	WASHER, PIVOT PIN - UPPER	33	22
11-30428	FASTENER, PLUG TO BOTTOM COWL	39	45	12-29245	WASHER, SHIFT LINK ROD	23	62
11-31808	NUT, COUPLER - CO-PILOT ROD (7/8" OD)	33	3	12-29245	WASHER, SHIFT ROD	27	46
11-34863	NUT, SHIFT LEVER TO STEERING HANDLE BRACKET	29	30	12-29245	WASHER, THROTTLE LINK ROD	21	23
11-34863	NUT, SHIFT LEVER TO STEERING HANDLE BRACKET	37	30	12-30164	WASHER, DETENT SPRING SCREW	41	16
11-52152	WING NUT, FRICTION NUT SCREW	33	5	12-31809	WASHER, COUPLER NUT . .	33	8
11-52155A1	NUT ASSEMBLY, FRICTION - CO-PILOT ROD	33	3A	12-34437	WASHER, SHAFT AND GEAR	25	18
11-T20890	NUT, STEERING ELBOW SET SCREW	25	26	12-34437	WASHER, SHIFT LEVER . . .	23	56
12-20084	WASHER, HANDLE BRACKET FASTENING SCREW	7	49	12-34437	WASHER, SHIFT LEVER . . .	27	40
12-20084	WASHER, HANDLE BRACKET FASTENING SCREW	7	49	12-35950	WASHER, SHIFT ROD	29	22
12-20084	WASHER, STEERING HANDLE SHAFT	17	9	12-35950	WASHER, SHIFT ROD	37	22
12-20084	WASHER, STEERING LINK ROD	33	14	12-37828	WASHER, SHIFT LEVER . . .	29	29
12-20086	WASHER, SHIFT CONTROL LEVER TO HANDLE BRACKET	7	44	12-37828	WASHER, SHIFT LEVER . . .	37	29
12-20533	WASHER, CHECK UNIT ADAPTOR SCREW	15	5	12-38503	WASHER, STEERING ELBOW TO STEERING BRACKET NUT	21	38
12-20533	WASHER, MAGNETO CONTROL LEVER AND LINK ROD	7	37	12-38503	WASHER, STEERING ELBOW TO STEERING BRACKET NUT	25	28
12-20553	WASHER, STEERING BRACKET SCREW	23	48	12-38742	WASHER, GEAR AND SHAFT	21	16
12-20553	WASHER, STEERING LINK ROD	33	14	12-48477	WASHER, S TEERING HANDLE BRACKET (.505 I. D.)	29	34
12-20722	WASHER, BRACKET FASTENING SCREW	7	33	12-48477	WASHER, STEERING HANDLE BRACKET	37	34
12-20722	WASHER, PIVOT PIN	33	20	12-48526	WASHER, NYLON - STEERING HANDLE BRACKET	39	35
12-20722	WASHER, STEERING LINK ROD	33	11	12-48526	WASHER, NYLON - STEERING HANDLE BRACKET (.630 I. D.)	29	35
				12-48527	WASHER, NYLON - STEERING HANDLE BRACKET	39	38
				12-48527	WASHER, NYLON - STEERING HANDLE BRACKET (1 35/64" O. D.)	31	38
				12-49636	WASHER, NYLON - STEERING HANDLE BRACKET	39	40

PARTS INDEX

Part Number	Description	Pg.	Ref. No.	Part Number	Description	Pg.	Ref. No.
12-49636	WASHER, NYLON - STEERING HANDLE BRACKET (1 3/4" O.D.)	31	40	17-20009	PIN, DETENT - SHIFT LEVER	23	49
12-62252	WASHER, THROTTLE HANDLE TO STEERING ARM	41	6	17-22896	PIN, ROLL - GEAR TO THROTTLE CONTROL SOCKET	17	22
13-20730	WASHER, WAVE - STEERING HANDLE	5	3	17-23928	PIN, ROLL - VERTICAL GEAR TO CONTROL BRACKET	17	25
13-20730	WASHER, WAVE - STEERING HANDLE	21	3	17-23928	ROLL PIN, SPRING TO CONNECTOR PIN	15	-
13-20730	WASHER, WAVE - STEERING HANDLE	25	3	17-24192	PIN, ROLL - MAGNETO CONTROL LEVER TO CROSS SHAFT	7	35
13-20758	LOCKWASHER, STEERING BRACKET SCREW	23	47	17-24865	PIN, GROOVE - PINION GEAR TO SHAFT	5	8
13-21804	LOCKWASHER, CLAMP PLATE FASTENING SCREW	19	38	17-24865	PIN, PINION GEAR TO STEERING HANDLE	21	8
13-21804	LOCKWASHER, CLAMP PLATE SCREW	27	59	17-24865	PIN, PINION GEAR TO STEERING HANDLE	25	8
13-26992	LOCKWASHER, CHECK UNIT ADAPTOR SCREW	15	6	17-26759	PIN, ROLL - THROTTLE ARM TO SHAFT AND GEAR	25	17
13-26992	LOCKWASHER, STEERING BRACKET SCREW	11	3	17-26862	PIN YOKE TO STEERING HANDLE SHAFT	17	13
13-26992	LOCKWASHER, STEERING HANDLE LOCATING SCREW	5	13	17-27088	PIN, BALL GEAR TO THROTTLE SHAFT	41	9
13-26992	LOCKWASHER, THROTTLE CONTROL BRACKET SCREW	17	27	17-28690	PIN, CONNECTOR TO STEERING BRACKET	15	-
13-28943	WASHER, WAVE - SHIFT ROD	27	45	17-38489	PIN, ROLL - THROTTLE ARM TO GEAR AND SHAFT	21	18
13-48478	WAVE WASHER, STEERING HANDLE BRACKET	31	39	17-45065	PIN, DETENT - SHIFT LEVER	25	34
13-48478	WAVE WASHER, STEERING HANDLE BRACKET	39	39	17-46152	PIN, THROTTLE SHAFT	41	5
14-20745	TAB WASHER, CROSS SHAFT BUSHING NUT	5	23	17-77564	PIN, BALL GEAR TO UNIVERSAL JOINT	41	15
14-26706	TAB WASHER, YOKE PIN HOLDING	17	11	18-20180	COTTER PIN, SHIFT ROD TO SHIFT LEVER	27	47
14-31828	TAB WASHER, BRACKET SCREW	39	47	18-25191	COTTER PIN, LINK ROD FASTENING	7	38
15-20729	SHIM, STEEL - STEERING HANDLE (.010)	5	2	18-25191	COTTER PIN, SHIFT CONTROL LEVER FASTENING	7	45
15-20729	SHIM, STEEL - TUBE ASSEMBLY TO GEAR (.010)	5	-	18-25191	COTTER PIN, SHIFT LINK ROD TO SHIFT LEVER	23	63
15-20729	SHIM, STEERING HANDLE (.010)	21	2	18-25191	COTTER PIN, SHIFT ROD	29	23
15-20729	SHIM, STEERING HANDLE (.010)	25	2	18-25191	COTTER PIN, SHIFT ROD	37	23
15-20729	SHIM, STEERING HANDLE TO GEAR	21	6	18-25191	COTTER PIN, THROTTLE LINK ROD TO THROTTLE ARM	21	24
15-20729	SHIM, STEERING HANDLE TUBE TO PINION GEAR (.010)	25	6	19-35827	PLUG, BOTTOM COWL (SHORTING SWITCH HOLE)	27	54
15-26707	SHIM, STEERING HANDLE PIVOT TO BRACKET	17	29	19-35827	PLUG, BOTTOM COWL - SHORTING SWITCH HOLE	31	44
15-28485	SHIM, STEERING HANDLE TO ARM BRACKET	17	30	19-35827	PLUG, BOTTOM COWL - SHORTING SWITCH HOLE	39	44
				22-38485	CONNECTOR, SHORTING SWITCH	21	30
				23-20733	BUSHING, STEERING HANDLE TUBE	5	6
				23-20733	BUSHING, STEERING HANDLE TUBE	21	5

PARTS INDEX

Part Number	Description	Pg.	Ref. No.	Part Number	Description	Pg.	Ref. No.
23-20743	BUSHING, CROSS SHAFT	5	21	23-52151	BUSHING, STEERING LINK		
23-25303	SLEEVE, RUBBER - SHORTING SWITCH	5	28	24-20510	SPRING, CONNECTOR PIN	33	10
23-25335	SPACER, CROSS SHAFT GEAR TO BUSHING	5	20	24-20609	SPRING, FRICTION PLUG SCREW	15	-
23-25907	BUSHING, NYLON - PIVOT PIN TO STEERING LINK			24-20609	SPRING, FRICTION PLUG SCREW	5	15
23-25915	BUSHING, RUBBER - PIVOT PIN TO STEERING LINK	33	23	24-20609	SPRING, FRICTION PLUG SCREW	23	41
23-26850	BUSHING, NYLON - COUPLER NUT	33	24	24-25321	SPRING, TENSION - LINK ROD	25	31
23-26856	BUSHING, NYLON - GEAR AND SHAFT (1/4" I.D.)	33	6	24-26703	SPRING, STEERING HANDLE SHAFT	7	39
23-26856	BUSHING, NYLON - SHAFT AND GEAR (1/4" I. D.)	21	10	24-35210	SPRING, TENSION - SHIFT LEVER DETENT PIN	17	10
23-26954	BUSHING, NYLON - END COVER (3/8" I. D.)	25	10	24-35210	SPRING, TENSION - SHIFT LEVER DETENT PIN	23	51
23-26954	BUSHING, NYLON - END COVER (3/8" I. D.)	21	13	24-35227	SPRING, COMPRESSION - SHIFT LEVER DETENT PIN	25	35
23-27818	SPACER, PIVOT PIN TO BRACKET	25	13	24-35227	SPRING, COMPRESSION - SHIFT LEVER DETENT PIN	23	50
23-28100	BUSHING, NYLON - STEERING HANDLE	33	17	24-38497	SPRING, SHIFT LINK ROD	25	36
23-28919	BUSHING, NYLON - STEERING HANDLE BRACKET	17	8	24-38497	SPRING, THROTTLE LINK ROD	23	61
23-28919	BUSHING, NYLON - STEERING HANDLE BRACKET	39	36	24-38741	SPRING, COMPRESSION - GEAR AND SHAFT	21	22
23-28919	BUSHING, NYLON - STEERING HANDLE BRACKET (5/8" I. D.)	29	36	24-38741	SPRING, COMPRESSION - SHAFT AND GEAR	21	12
23-29741	SLEEVE, RUBBER - COUPLER NUT	33	7	24-72847	SPRING, DETENT - STEERING HANDLE	25	12
23-30079	SPACER, BRACKET TO BOTTOM COWL SCREW	7	32	25-21706	"O" RING, SHORTING SWITCH CONNECTOR	41	18
23-30079	SPACER, PIN THRU BOTTOM COWL	33	19	27-48518	GASKET, COVER PLATE	5	30
23-30677	BUSHING, NYLON - STEERING HANDLE TO BODY	17	6	27-48518	GASKET, COVER PLATE	29	8
23-31011	BUSHING, NYLON - THROTTLE CONTROL SOCKET	17	20	32-38926A1	TUBE ASSEMBLY, STEERING HANDLE	37	8
23-34136	BUSHING, NYLON - GEAR TO CONTROL BRACKET	17	23	32-38926A1	TUBE ASSEMBLY, STEERING HANDLE	21	4
23-35016	SPACER, SCREW TO BRACKET	3	4	32-485951	CONDUIT, CABLE (MERC 350 AND 400 ONLY)	25	4
23-38492	SLEEVE, SHORTING SWITCH	21	29	37-34204	DECAL, BOTTOM COWL	29	13
23-48237	BUSHING, NYLON - SHIFT LEVER	37	28	37-38484	DECAL, BOTTOM COWL (OFF- ON)	19	34
23-48237	BUSHING, NYLON - SHIFT LEVER (3/8" I. D.)	29	28	37-38620	DECAL, STEERING BRACKET COVER (F-N- R)	21	32
23-48475	BUSHING, NYLON - SHIFT ROD (1/4" I D)	37	21	37-38620	DECAL, STEERING BRACKET COVER (F-N-R)	23	66
23-48475	BUSHING, NYLON - SHIFT ROD (1/4" I. D.)	29	21	37-48569	DECAL, THROTTLE POSITION INDICATOR	27	49
23-48525	SPACER, STEERING HANDLE BRACKET	29	37	43-23221	GEAR, BEVEL PINION - GRIP AND SHAFT ASSEMBLY	29	4
				43-23221	GEAR, BEVEL PINION - STEERING HANDLE	5	7
				43-23221	GEAR, PINION - STEE RING HANDLE	21	7
				43-30703	GEAR, THROTTLE CONTROL SOCKET	25	7
						17	21

PARTS INDEX

Part Number	Description	Pg.	Ref. No.	Part Number	Description	Pg.	Ref. No.
43-60852	GEAR, BALL - UNIVERSAL JOINT	41	14				
43-60852	GEAR, BALL THROTTLE SHAFT	41	8				
53-30428	FASTENER, PLUG TO BOTTOM COWL	27	55				
53-30428	FASTENER, PLUG TO BOTTOM COWL	31	45				
53-38476	RING, SNAP - END COVER RETAINING	21	15				
53-38476	RING, SNAP - END COVER RETAINING	25	15				
54-22783	" S" CLIP, BOTTOM COWL - SHORTING SWITCH LEADS	31	42				
54-22783	"S" CLIP, BOTTOM COWL - SHORTING SWITCH LEADS	27	53				
54-29562	CLAMP, HANDLE BRACKET FASTENING SCREW	7	48				
54-29562	CLAMP, HANDLE BRACKET FASTENING SCREW	7	48				