



CIRCULATE TO:	SERVICE MGR.	PARTS MGR.	MECHANICS	Place in Your "Service Bulletins Binder"
---------------	--------------	------------	-----------	--

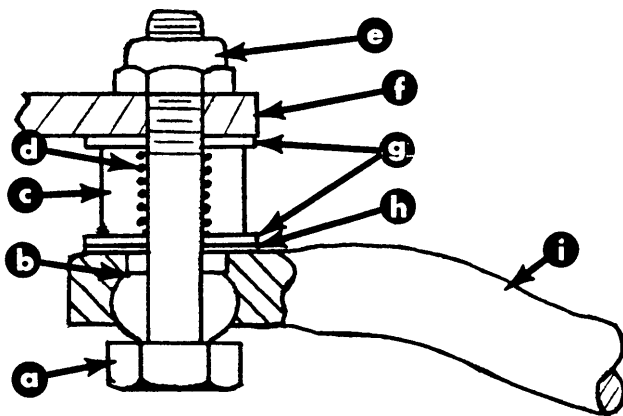
- A. Ride-Guide Attachments - 1977 Men: 402-500
- B. Remote Control Attaching Kit A46455A3 - 1977 Merc 200E-200EL
- C. Recommended Spark Plugs - 1977 Men: 850
- D. Starting Procedure - 1976-77 Men: 650-700-850

A. RIDE-GUIDE ATTACHMENTS - 1977 Merc 402-500

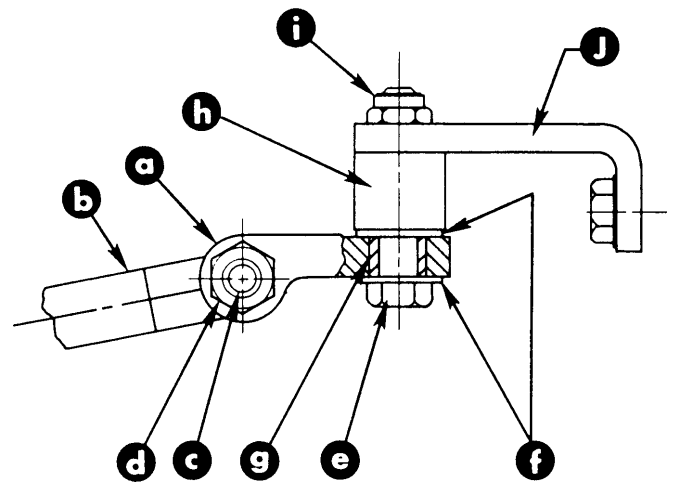
(Attach Service Bulletin Sticker to PP 2A-9 and 8A-13 of Your Service Manual.)

1. Standard Ride-Guide Attaching Kit A-66741A1

Because of a change in the engine steering arm on 1977 Merc 402 and 500 Models, Ride-Guide Attaching Kit A-66741A1 MUST BE INSTALLED as shown in Figure 1.



- a - Pivot Bolt
- b - Flat Side of Ball Joint
- c - Rubber Bushing
- d - Spring
- e - Self-Locking Nut
- f - Engine Steering Arm
- g - Washers (2)
- h - Nylon Washer
- i - Steering Link Rod



- a - Clevis
- b - Steering Cable
- c - BOlt (3/8"x24x1-3/8")
- d - Locknut (Clevis to Steering Cable; Torque to 10 Ft. Lbs.)
- e - Bolt (3/8"x24x1-7/8"; Torque to 20 Ft. Lbs.)
- f - Washers (1/16" Thick)
- g - Spacer (Small)
- h - Spacer (Large)
- i - Locknut (Clevis to Engine Steering Arm; Torque to 20 Ft. Lbs.)
- j - Steering Arm

Figure 1. Parts Assembled on Engine

Steering Arm - 1977 Merc 402-500

Figure 2. Clevis Installation - 1977 Merc 402-500

2. Ride-Guide Clevis Attaching Kit A-70599A3

Model 1977 Merc 402 and 500 have a new engine steering arm and, therefore, require a Clevis Attaching Kit (A-70599A3). This kit is used to attach the Ride-Guide cable to the engine steering arm ONLY when the "Transom Mounted Ride-Guide Attaching Kit" is installed. If the Ride-Guide cable is installed thru the engine tilt tube, then a "steering link rod" must be used.

Install the clevis to the steering cable as shown in Figure 2.

B. REMOTE CONTROL ATTACHING KIT A-46455A3 - 1977 Merc 200E-200EL

(Attach Service Bulletin Sticker to PP 2A-19 and 8B-16 of Your Service Manual.)

Model 1977 Merc 200E and 200EL Outboards will have a Remote Control Attaching Kit (A-46455A3) packaged with each outboard. This kit will be listed as a separate line item on the invoice and will be priced separately.

C. RECOMMENDED SPARK PLUGS - 1977 Merc 850

(Attach Service Bulletin Sticker to P. 9A-1 of Your Service Manual.)

Recommended spark plugs for the 1977 Merc 850 are the AC-V40FFK (C-33-58194) or Champion L78V. The recommendation in some Merc 850 "Operation and Maintenance Manual" is not correct.

D STARTING PROCEDURE - 1976-77 Merc 650-700-850

(Attach Service Bulletin Sticker to P. 1B-2 of Your Service Manual.)

Model 1976-77 Merc 650-700-850 Outboards do not have a choke shutter in the carburetor. In its place, they have a fuel enricher. It is important, therefore, that the starting procedure in the "Operation and Maintenance Manual" be followed carefully.

DO NOT raise the neutral warmup lever all-the-way to the stop when starting. Raise only to a position midway between full up and down. After starting and before shifting motor, return neutral warmup lever to the closed position (down).