

NUMBER: 80-7

DATE: 3/17/80

CIRCULATE TO:
SERVICE MANAGER
PARTS MANAGER
MECHANICS

- A. Rewind Starter Repair Kit - Merc 4
- B. Rewind Starter Rope Breakage - Merc 7.5/9.8
- C. New Outboard Service Tools
- D. Timing/Synchronizing/Adjusting - Merc 50

A. REWIND STARTER REPAIR KIT - Merc 4

(Attach Service Bulletin Sticker on P. 2-14 in Your C-9086136 Outboard Service Manual.)

Australia: BELOW Serial Number 8065265
Belgium: BELOW Serial Number 9256981

Canada: BELOW Serial Number 7146488
United States: BELOW Serial Number 5589202

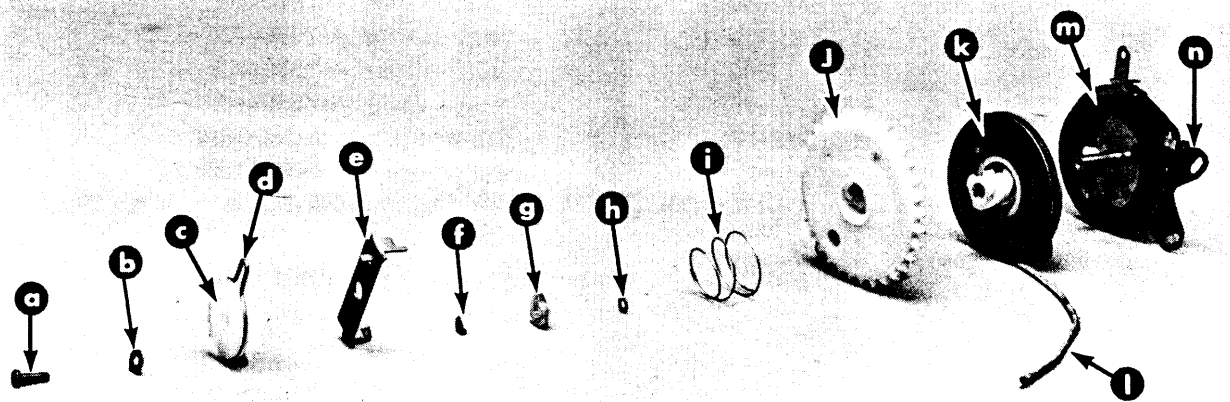
To improve operation and reliability of the rewind starter assembly on EARLY Merc 4 (Gnat) motors (serial numbers specified, above), a rewind starter repair kit (A-75764A2) now is available to up-date the rewind assembly to the latest design (1980 style).

We recommend that this repair kit be installed whenever service of the rewind starter is required on one of these motors.

NOTE: Merc 4 motors ABOVE the serial numbers specified are already equipped with the latest style rewind starter assembly.

Figure 1 shows the EARLY style rewind starter in assembly sequence. It identifies the components that are to be replaced and/or deleted and those which are to be retained for re-use when rewind starter repair kit (A-75764A2) is installed.

IMPORTANT: If any of the EARLY style components (those which are retained for re-use) are damaged or worn and cannot be re-used, they must be ordered in addition to the rewind starter repair kit.



NOTE: RETAIN Items i, k, m and n for Re-use with Rewind Starter Repair Kit (A-75764A2) — DISCARD All Remaining Parts.

13220

Figure 1. EARLY Style Rewind Starter

B. REWIND STARTER ROPE BREAKAGE - Merc 7.5/9.8

(Attach Service Bulletin Sticker on P. 2-3 in Your C-90-86136 Outboard Service Manual.)

Australia: Serial No. 8050625 thru 8065739
Belgium: Serial No. 9165305 thru 9262405

Canada: Serial No. 7111348 thru 7149537
United States: Serial No. 4839254 thru 5615297

Premature rewind starter rope failures (frayed or broken) on some of the above motors have been traced to sharp edges (caused by chipped plating) inside the aluminum rope guide (in the rewind starter housing).

If this problem is encountered on any of the above motors, we recommend that the aluminum rope guide be replaced with a synthane rope guide (A-58657) and a new retainer clip (C-53-72168) when installing a new rewind starter rope. (Newer motors, ABOVE the Serial Groups listed above, already are equipped with the synthane rope guide.)

IMPORTANT: Before installation, the new retainer clip (C-53-72168) MUST BE MODIFIED (as shown in Figure 3) to ensure proper fit and to secure the synthane rope guide in the rewind starter housing.

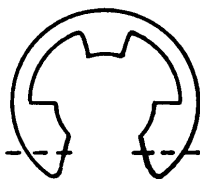


Figure 3. Retainer Clip

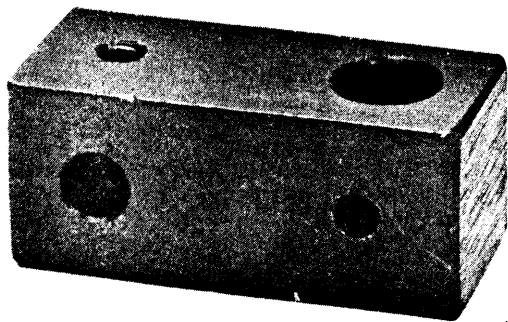
Cut or grind 1/8"(3.2mm) off each tip of the retainer clip --- then "round-off" inside edge of each tip to provide a smooth "lead-in" angle.

A-58657	Rope Guide
C-53-72168	Retainer Clip

C. NEW OUTBOARD SERVICE TOOLS

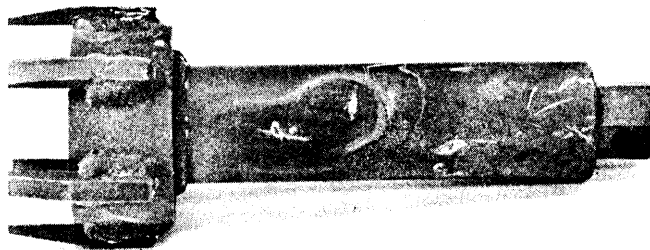
(Attach Service Bulletin Sticker on Tool Section 10 Pages in Your C-90-74041 Service Manual and in Your Tool Catalog.)

1. C-91-89897 - Dial Indicator Holder; holds the dial indicator in place on the gear housing when checking gear lash on 40 HP and higher HP models. (Figure 4)
2. C-91-91947- Gear Housing Cover Tool; a new gear housing cover tool required to remove the new plastic gear housing cover from 1980 models Merc 40-50-70. (Figure 5)



13887

Figure 4



13885

Figure 5

3. C-91-89670 - Pinion Location Inspection Tool; required to obtain proper pinion gear depth in 1980 model Merc 70. (Figure 6)
4. C-91-92787 - Bushing Removal/Installation Tool; for removing/installing the tilt lever release bushing on 1980 V-6 Outboards. (Figure 7)

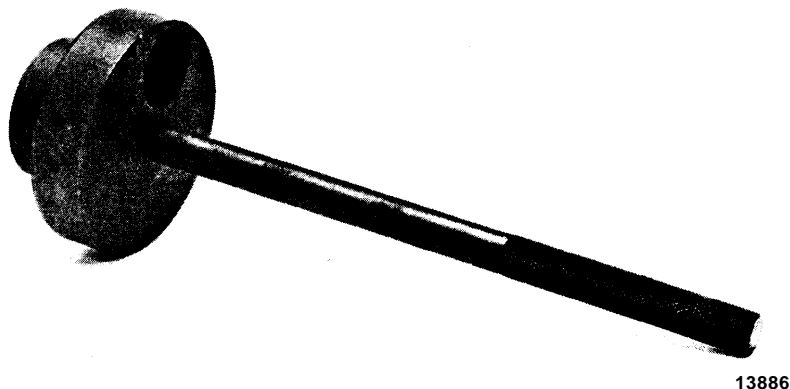


Figure 6

13886

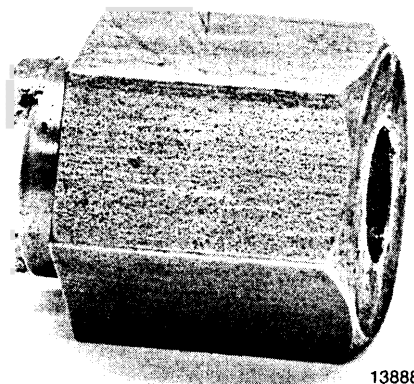


Figure 7

13888

D. TIMING/SYNCHRONIZING/ADJUSTING - Merc 50

[Attach Service Bulletin Sticker on P. 3B-15 in Your C-90-74041 Service Manual and New C-90-86135 (50-70 HP) Service Manual When Received.]

Model 1980 Merc 50 Outboards with the following listed Serial Numbers have a change in the primary pickup.

United States: 5632037 and up
Canada: 7150562 and up

Australia: 8066280 and up
Belgium: 9265180 and up

Primary pickup on the above listed Merc 50 Outboards is 0"-2" ATDC.