

NUMBER: 84-3

- A. Hi-Rake Propellers for Models 35 thru 70
- B. Propellers for 1978 and Later * 75 thru 1500 (In-Line) Models
- C. Spacer Old Style Propeller Shaft to Thrust Hub
- D. Propellers for V-6 Outboards

CIRCULATE TO:
SERVICE MANAGER
PARTS MANAGER
MECHANICS
"Place in a Service
Bulletin Binder"

A. HI-RAKE PROPELLERS FOR MODELS 35 THRU 70

Quicksilver Hi-Rake, 3-blade propellers, for models 35 thru 70 will back fit thru 1970 models (Merc 35-40-50-60-65-70). They are available cupped with Hi-Rake blade design, which provides improved performance with less chance of ventilation (breaking loose) in turns. Also, with Power Trim installed, the Hi-Rake propellers will hold better when the engine is trimmed out.

The propeller line will adapt to any 1970 and newer 35 thru 70 model by installing the forward thrust hub and tab washer (listed below). (Figure 1)

A-73345A1 Forward Thrust Hub**A-14-76281 Tab Washer****HI-RAKE 3-BLADE ALUMINUM and S. STEEL PROPELLERS**

Diameter	Pitch	Material	Part No.
10"	19"	Alum.	C-48-73146A4
10"	17"	Alum.	C-48-73144A4
10"	16"	Alum.	C-48-73142A4
10"	16"	S. Steel	C-48-91818A4
10-1/8"	15"	Alum.	C-48-73140A4
10-1/8"	15"	S. Steel	C-48-76232A4
10-1/4"	14"	Alum.	C-48-73138A4
10-1/4"	14"	S. Steel	C-48-76230A4
10-3/8"	13"	Alum.	C-48-73136A4
10-3/8"	13"	S. Steel	C-48-76228A4
10-5/8"	12"	Alum.	C-48-73134A4
10-5/8"	12"	S. Steel	C-48-79792A4
10-7/8"	11"	Alum.	C-48-85632A4
11-1/4"	10"	Alum.	C-48-73132A4
12-1/4"	9"	Alum.	C-48-87818A1
12-1/4"	9"	S. Steel	C-48-97868A1

All 1977 and later model 35 thru 70 were shipped with the new thrust hub and tab washer that are designed for use with the Hi-Rake propellers. We recommend using the Hi-Rake propellers with these models; however, the early propeller line can be utilized if the forward thrust hub (A-73345A1) is replaced by the early style forward thrust hub (A-65758), and using the old rear thrust hub (A-62124A1) and discarding the tab washer. (Figure 1)

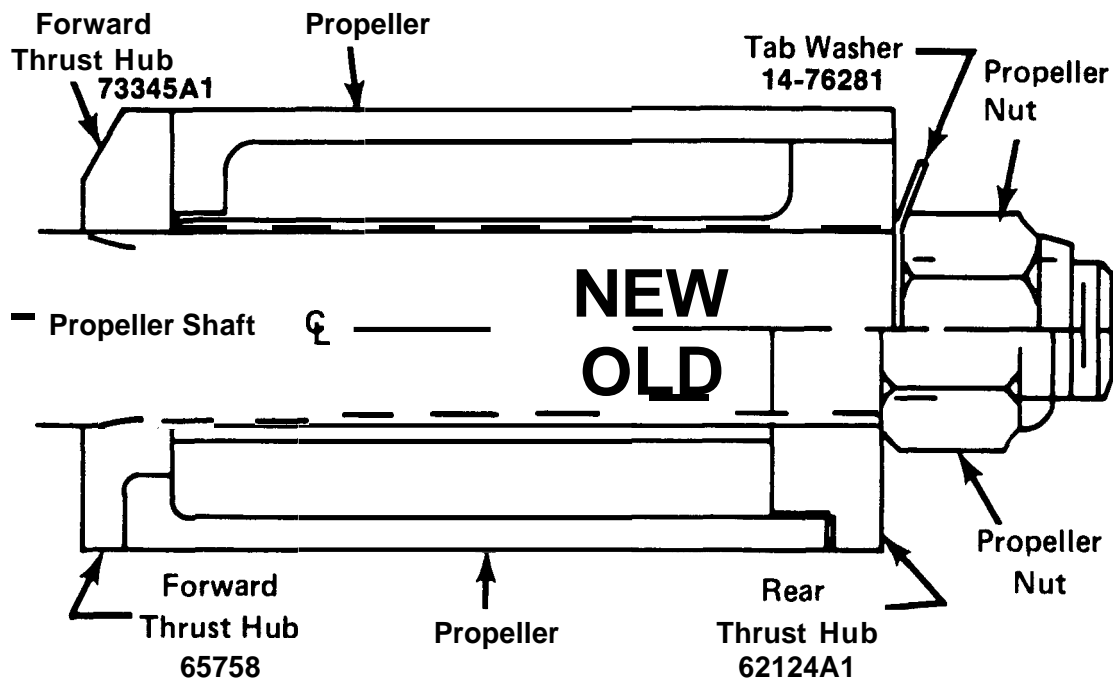


Figure 1. Propeller Installation

B. PROPELLERS FOR 1978 AND LATER - 75 thru 1500 (IN-LINE) MODELS

Quicksilver 3 blade propellers for model 75 thru 1500 (Merc 75-80-90-115) in-line models are only available cupped and with the new Hi-Rake blade design, which provides improved performance with less chance of ventilation (breaking loose) in turns. Also, with Power Trim installed, these propellers will hold better when the engine is trimmed out.

The propeller line will adapt to any 1963 and newer (see Item C following) 6 cylinder in-line model and 4 cylinder in-line model (except the 50 horsepower) by using the forward thrust hub and tab washer listed below. (Figure 2)

A-75282 Forward Thrust Hub

A-14-31210 Tab Washer

HI-RAKE 3-BLADE ALUMINUM and S. STEEL PROPELLERS

Diameter	Pitch	Material	Part No.
12-5/8"	25"	S. Steel	C-48-72758A4
12-1/2"	23"	Alum.	C-48-77350A4
12-3/4"	23"	S. Steel	C-48-72760A4
12-3/4"	21"	Alum.	C-48-77348A4
13"	21"	S. Steel	C-48-72500A4
13"	19"	Alum.	C-48-77346A4
13-1/4"	19"	S. Steel	C-48-72762A4
13-1/4"	17"	Alum.	C-48-77344A4
13-1/2"	17"	S. Steel	C-48-72764A4
13-3/4"	15"	Alum.	C-48-77342A4
13-3/4"	15"	S. Steel	C-48-87444A4
14"	13"	Alum.	C-48-77340A4
14"	11"	Alum.	C-48-77338A4

All **1978** and later model **75** thru **1500** in-line models were shipped with the new thrust hub and tab washer that are designed for use with the Hi-Rake propellers. We recommend using the propellers with these **1978** and later models; however, the early propeller line can be utilized if the new forward thrust hub **A-75282A1** is replaced by the old style forward thrust hub (**A-65091**), then adding the old rear thrust hub (**A-12-31211**) and tab washer (**A-14-31210**). (Figure 2)

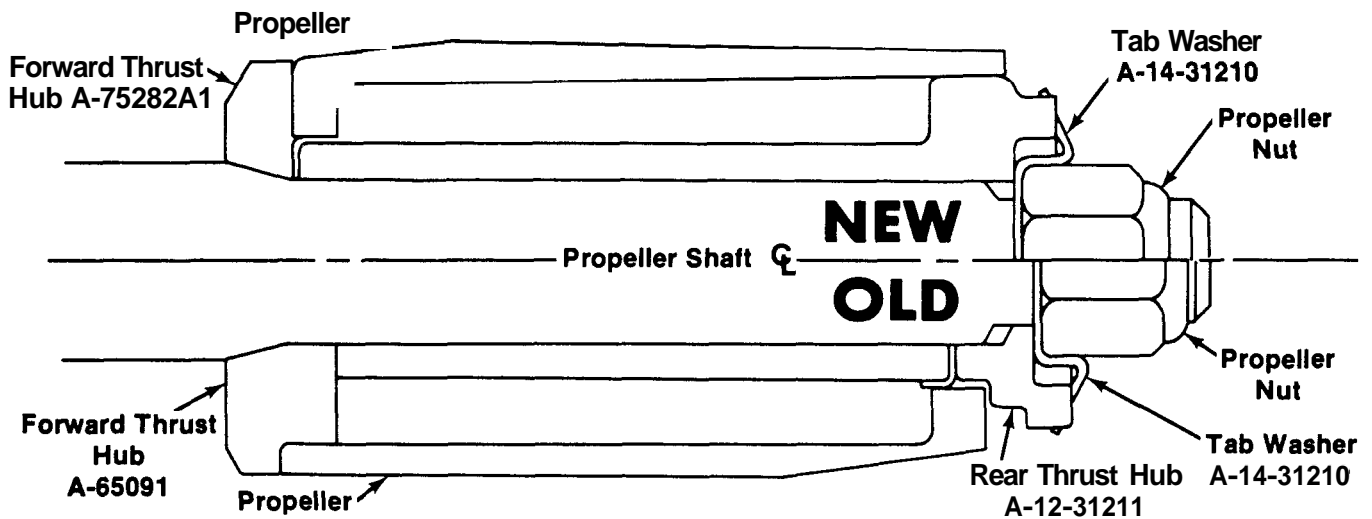


Figure 2. Propeller Installation

C. SPACER - OLD STYLE PROPELLER SHAFT TO THRUST HUB

Older style 6-cylinder and 4-cylinder (Merc **650-800**) outboard propeller shafts had a square thrust hub shoulder, as compared to the tapered thrust hub shoulder on present outboards. When installing new style propellers and thrust hub (**A-75282A1**) on those outboards, it will be necessary to install spacer (**C-23-86918**). (Figure 3)

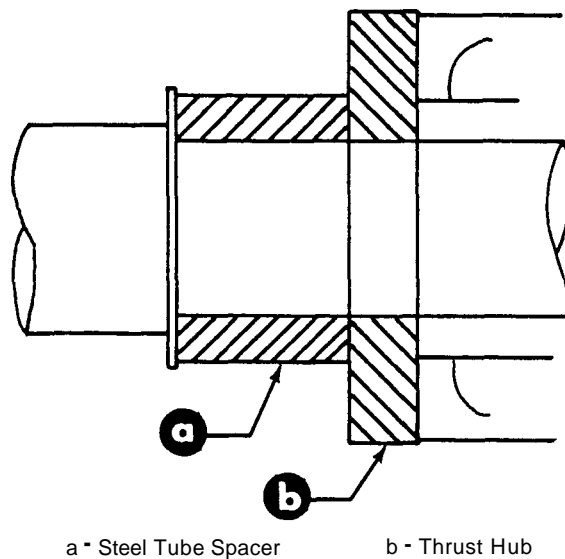


Figure 3. Spacer Location

D. PROPELLERS FOR V-6 OUTBOARDS

Quicksilver 3 blade propellers for V-6 model outboards (V-150 • 175 • 200 • 225) will back fit thru 1976 models. They are only available cupped.

The line will adapt to any 1976 and later V-6 model by using the forward thrust hub, rear thrust hub and tab washer listed below. (Figure 4)

A-77987 Forward Thrust Hub **A-14-31210 Tab Washer**
A-12-31211 Rear Thrust Hub

HI-RAKE 3-BLADE PROPELLERS

Diameter	Pitch	Material	Part No.
13-3/8"	25"	S. Steel	C-48-79796A4
13-3/8"	25"	Alum.	C-48-78126A4
13- 1/2"	23"	S. Steel	C-48-75724A4
13- 1/2"	23"	Alum.	C-48-78124A4
13-3/4"	21"	S. Steel	C-48-73982A4
13-3/4"	21"	Alum.	C-48-78122A4
14"	19"	S. Steel	C-48-73980A4
14"	19"	Alum.	C-48-78120A4
14- 1/2"	17"	S. Steel	C-48-79794A4
14- 1/2"	17"	Alum.	C-48-78118A4
14- 1/2"	15"	S. Steel	C-48-93272A4
15-1/4"	15"	Alum.	C-48-78116A4
16"	13"	Alum.	C-48-78114A4
16"	11"	Alum.	C-48-78112A4

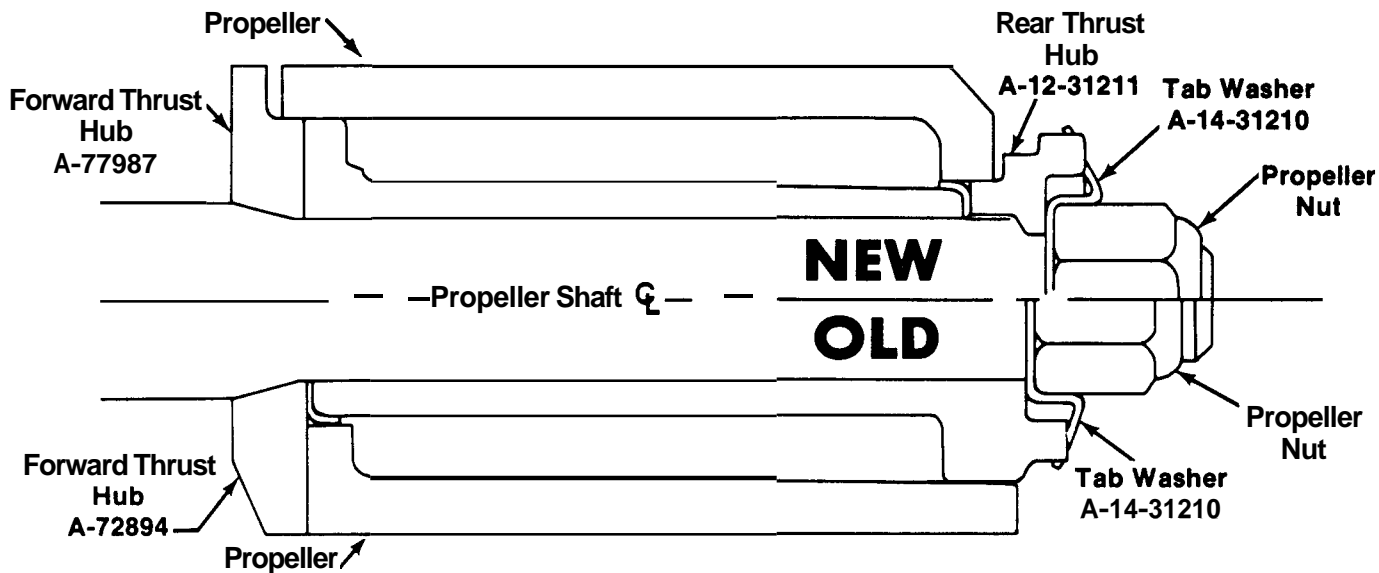


Figure 4. Propeller Installation

All 1978 and later V-6 models were shipped with the new thrust hub, rear thrust hub and tab washer that were designed for use with the late style propellers. We recommend using the later style propellers with these models; however, the early propeller line can be utilized if the new forward thrust hub (A-77987) is replaced by the old style forward thrust hub (A-72894), then adding the old rear thrust hub (A-12-31211) and tab washer (A-14-31210). (Figure 4)