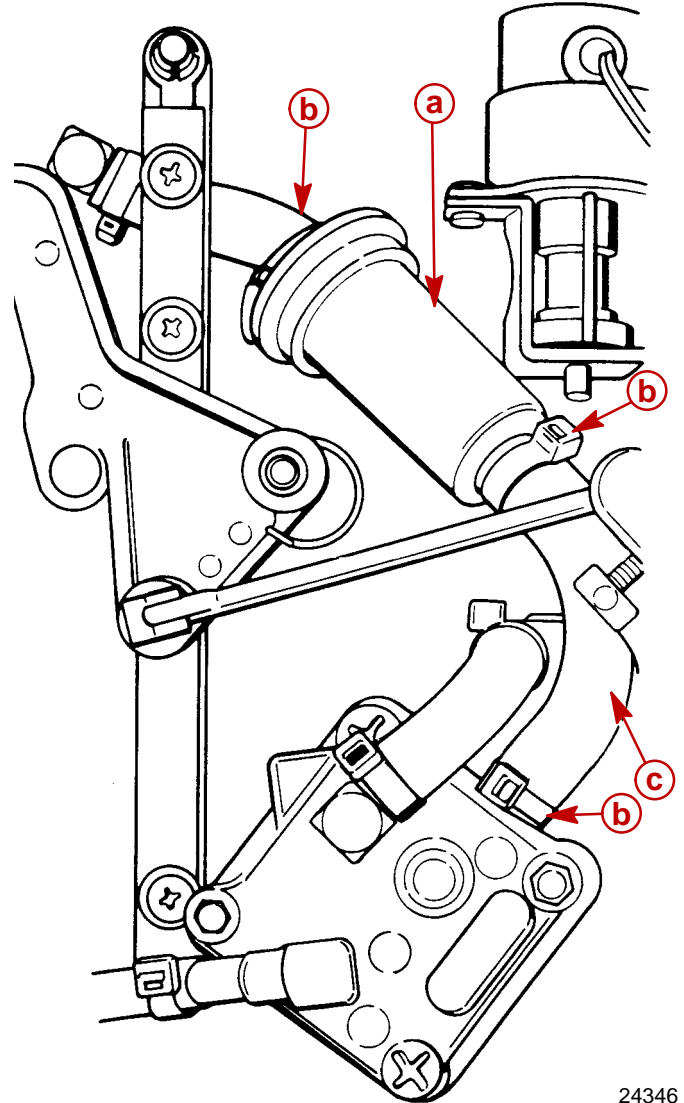


- A. Fuel Line Kinking –
1987-88 Model 3 Cylinder 70-75-80-90-HP
- B. E.C.U. Harness Coupling Ring – V220 EFI
- C. Gear Housing Change – Mariner 25 (695)
and 30 (689)
- D. Propeller Shaft Change – Mariner 25 (695)
and 30 (689)

**A. FUEL LINE KINKING – 1987-88 MODEL 3
CYLINDER 70-75-80-90 HP**

On 1987-88 3 cylinder (70-75-80-90 HP) the fuel line between the fuel pump and fuel filter may kink and restrict the fuel supply to the carburetors. Should this occur, replace the original fuel line with Molded Hose Kit P/N 32-19017A1. (Figure 1) Kit contains a molded fuel line and a replacement fuel filter.

Production models serial number B311188 and above will have the molded fuel line installed.



24346

Figure 1. Molded Hose Kit Installed

- a** - Fuel Filter
- b** - Sta-Strap (Three Places)
- c** - Hose (Pump to Filter)

B. E.C.U. HARNESS COUPLING RING – V220 EFI

Should the harness coupling ring (Figure 2) break when connecting the E.C.U. harness to the E.C.U. box it can now be replaced. Order Part Number 19049. The replacement coupling ring easily snaps into place on the harness.

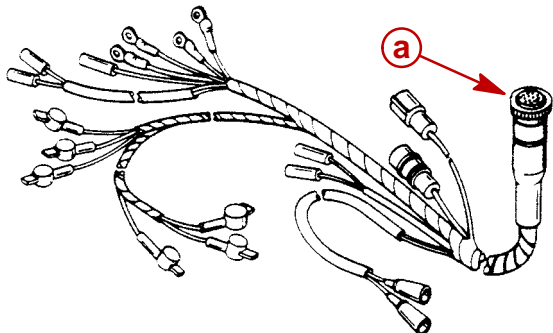


Figure 2.

a - Coupling Ring

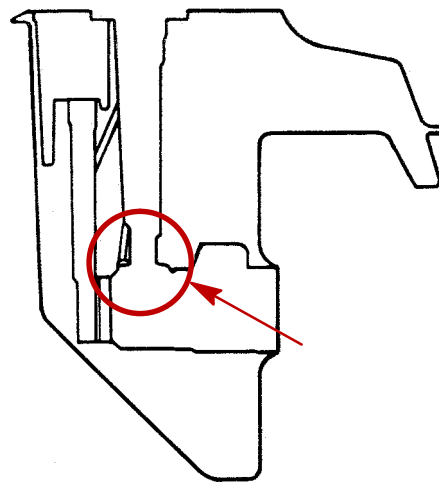
C. GEAR HOUSING CHANGE – MARINER 25 (695) AND 30 (689)

Thrust washer (P/N 12-81624M) above the pinion gear is no longer used on thru prop exhaust models listed. The complete gear housing assemblies are interchangeable as a unit. The empty gear housing (P/N 1651-9362M) is also interchangeable with previous models. however, inspection (Figure 3) is required to determine if the thrust washer is used.

Gear housing with recess (Figure 4) machined into casting above the location of the pinion gear requires the installation of thrust washer (P/N 12-81624M). Gear housing without machined recessed (Figure 5) does not require the thrust washer and one must not be used. Shimming specifications remain the same.

Starting Serial Number of Change

25 (695)	M – 031765	30 (689)	M – 030662
	ML – 325365		ML – 330239
	E – 255169		E – 108714
	EL – 557696		EL – 418705



24073

Figure 3. Inspection Area

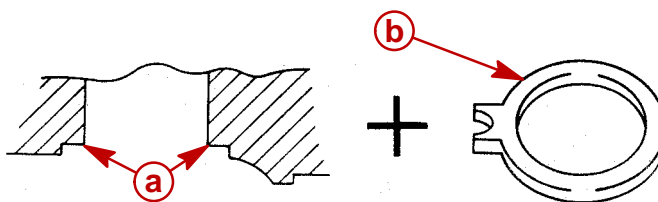


Figure 4. Previous Gear Housing

a - Machined Recess
b - Thrust Washer

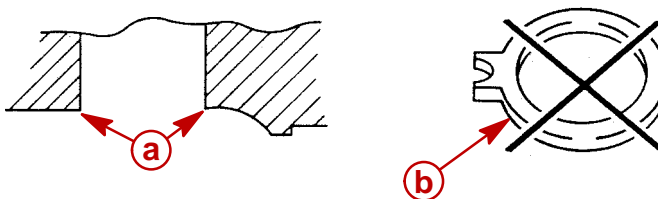


Figure 5. New Gear Housing

a - Housing without Recess
b - Thrust Washer

**D. PROPELLER SHAFT CHANGE – MARINER
25 (695) AND 30 (689)**

Propeller shaft P/N 44-19124M installed on 1988 models listed does not have the hole for the shift spring drilled as deep (Figure 8) as the previous shaft and the spring slide P/N 80679M is not used (Figure 6). New propeller shaft P/N 44-19124M supercedes previous propeller shaft P/N 44-84809M. When installing new propeller shaft on previous models, DO NOT install spring slide P/N 80679M.

Starting Serial Number of Change

25 (695)	M – 031675	30 (689)	M – 030662
	ML – 325365		ML – 329959
	E – 255144		E – 108559
	EL – 557646		EL – 418560

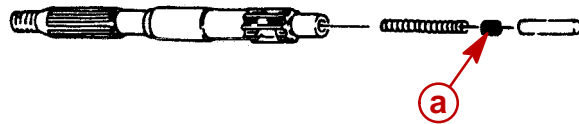


Figure 6. Spring Slide

a - Spring Slide P/N 80679M

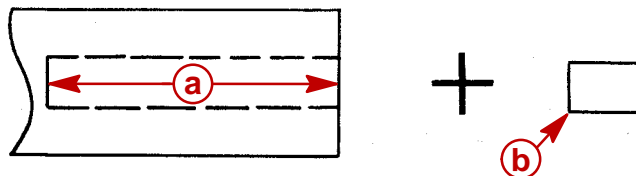


Figure 7. Propeller Shaft P/N 44-84809M – Previous

a - 3-7/8 Inch (98mm) P/N 44-84809M Previous
b - Spring Slide P/N 80679M

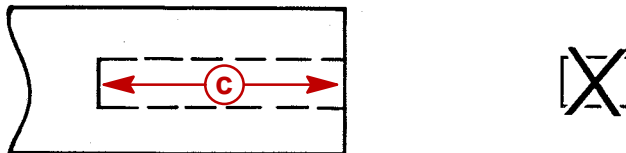


Figure 8. Propeller Shaft P/N 44-19124M – New

c - 3-3/8 Inch (86mm) P/N 44-19124M New