

Attachments to Steering Arm – 1989 Model 70 thru 200 Outboards

It has come to our attention that in some combinations of outboard, steering system, boat, as well as abusive use, attachment of a steering system to a steering arm **extension** causes unusually high stresses on the steering arm. **Only** the hole in the steering arm is to be used to connect a steering mechanism. The **only** purpose of the steering arm extension supplied with Dual Engine Two Cable Attaching Kit P/N 92876A6 (Figure 1) is to attach the dual engine tie bar.

This information applies to all 1989 Model 70 thru 200 outboards Serial No. 0C100000 thru 0C166345. These model outboards are now being shipped with a tag attached to the steering arm (Figure 2 & 3) as a reminder.

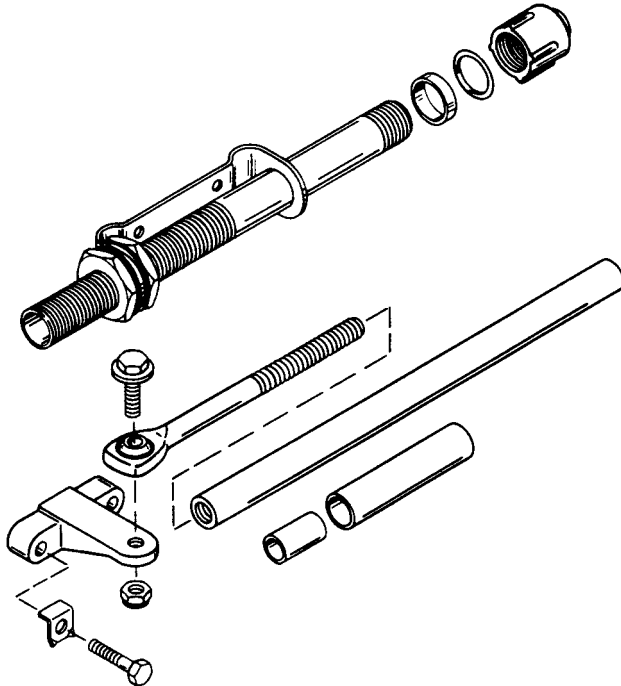


Figure 1.

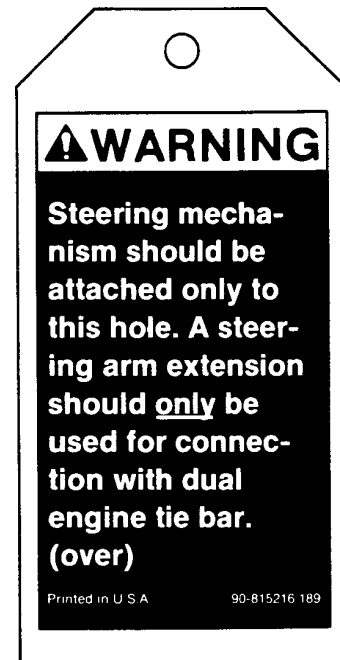


Figure 2.

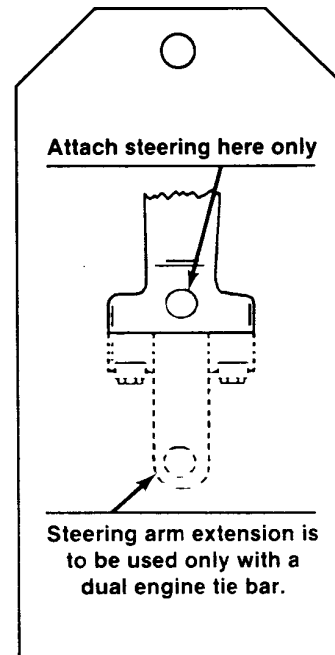


Figure 3.