



# service bulletin

No. 97-11

## Emissions Information

### Models Affected

#### MERCURY/MARINER/FORCE/SPORT JET

1998 and Later 2.5 thru 250 HP

#### MANUFACTURERS RESPONSIBILITY:

Beginning with 1998 model year engines, manufacturer's of all marine propulsion engines, must determine the exhaust emission levels for each engine horsepower family, and certify these engines with the United States Environmental Protection Agency (EPA). A certification decal/emissions control information label, showing emission levels and engine specifications directly related to emissions, **must** be placed on each engine at the time of manufacture.

#### DEALER RESPONSIBILITY:

When performing service on all 1998 and later outboards, attention must be given to any adjustments that are made, that affect emission levels. Adjustments must be kept within published factory specifications. Replacement or repair of any emission related component, must be executed in a manner that maintains emission levels within the prescribed certification standards. Dealers are **not** to modify an engine, in any manner, that would alter the horsepower or allow emission levels to exceed their predetermined factory specifications. Exceptions include manufacturers prescribed changes, such as that for altitude adjustments.

#### OWNER RESPONSIBILITY:

The owner / operator is required to have engine maintenance performed to maintain emission levels within prescribed certification standards.

The owner / operator is **not** to modify the engine, in any manner, that would alter the horsepower or allow emission levels to exceed their predetermined factory specifications.

Single engine exceptions may be allowed with permission from the EPA for racing and testing.

#### EPA EMISSION REGULATIONS:

All new 1998 and later outboards manufactured by Mercury Marine, are certified to the United States Environmental Protection Agency, as conforming to the requirements of the regulations for the control of air pollution from new outboard motors. This certification is contingent on certain adjustments being set to factory standards. For this reason, the factory procedure for servicing the product must be strictly followed and, wherever practicable, returned to the original intent of the design.

The responsibilities listed above are general, and are in no way a complete listing of the rules and regulations pertaining to the EPA laws on exhaust emissions for marine products. For more detailed information on this subject, you may contact the EPA at the following locations:

#### VIA U.S. POSTAL SERVICE:

Office of Mobile Sources  
Engine Programs and Compliance Division  
Engine Compliance Programs Group (6403J)  
401 M St. NW  
Washington, DC 20460

#### VIA EXPRESS or COURIER MAIL:

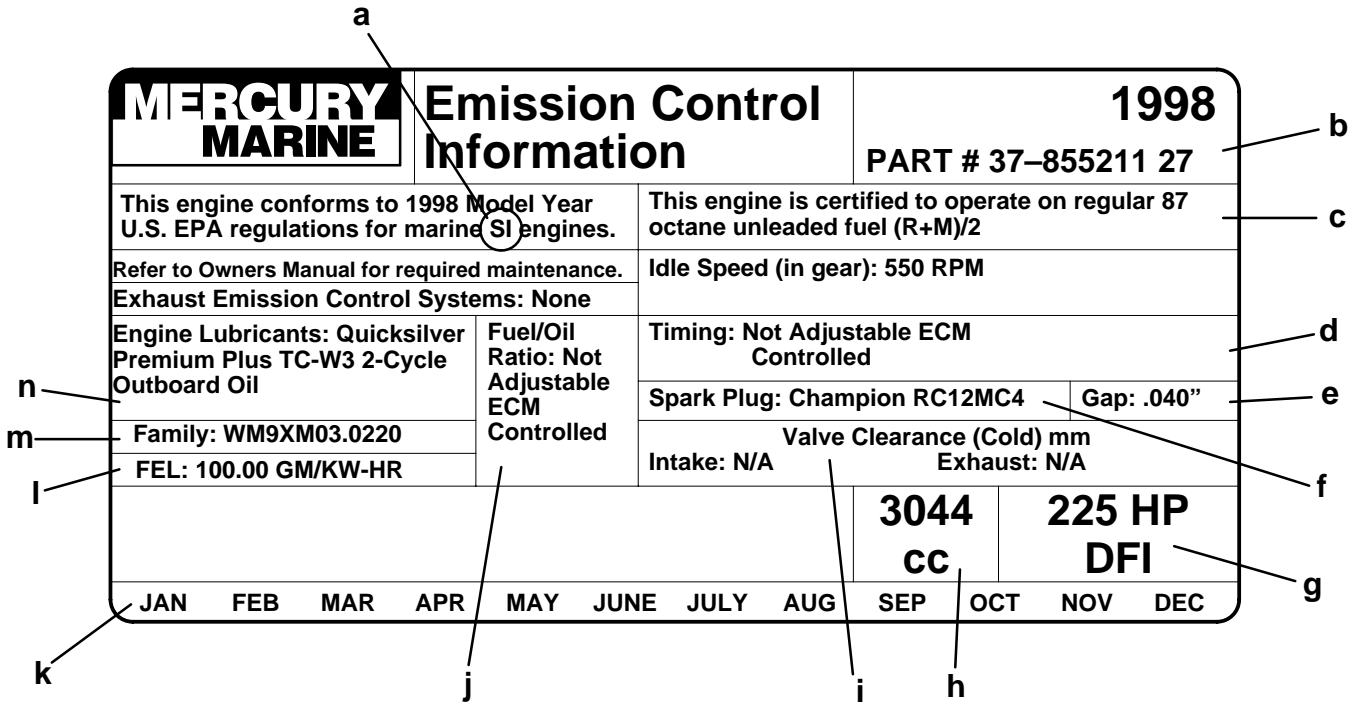
Office of Mobile Sources  
Engine Programs and Compliance Division  
Engine Compliance Programs Group (6403J)  
501 3<sup>rd</sup> St. NW  
Washington, DC 20001

#### EPA INTERNET WEB SITE:

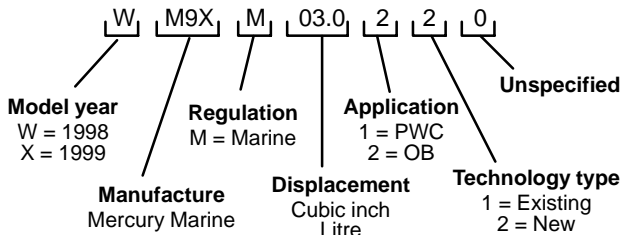
<http://www.epa.gov/omswww>

**CERTIFICATION LABEL:**

The certification label must be placed on each engine at the time of manufacture, and must be replaced in the same location if damaged, or removed. Shown below is a typical certification label, and is not representative of any one model. Label shown below is not to scale, (shown at twice the normal size).



- a - Spark Ignition (SI)
- b - Model year of engine, and production decal part number
- c - Type and Octane of fuel engine is designed to operate on
- d - Timing specifications when adjustable
- e - Spark plug gap, in inches
- f - Recommended spark plug, only this plug or equivalent should be used
- g - Engine Horsepower rating
- h - Displacement (cc = cubic centimeter)
- i - Valve Clearance (Four Stroke engines only)
- j - Recommended oil/fuel, ratio for best engine performance
- k - Month of production (Boxing month will be punched)
- l - FEL: Represents (Mercury Marine) statement of the maximum emissions output for the engine family.
- m - Family example:



- n - Engine lubricants recommended by the manufacturers

**DECAL LOCATION FOR 1998 MODELS:**

MODEL	PRODUCTION PART #	SERVICE PART #	LOCATION ON ENGINE
Merc/Mar S, 4.6 ci (2.5-3.3 H.P.)	37-855211 1	37-855577 1	Inside Top Cowl
Merc/Mar S, 102cc (4-5 H.P.)	37-855211 2	37-855577 2	Inside Top Cowl
Merc/Mar 12, 13 ci (6-8 H.P.)	37-855211 3	37-855577 3	Inside Rear Top Cowl
Merc/Mar 12, 16 ci (9.9-15 H.P.)	37-855211 4	37-855577 4	Inside Rear Top Cowl
Merc/Mar 12, 24 ci (20-25 H.P.)	37-855211 5	37-855577 5	Inside Top Cowl
Merc/Mar 12, 39 ci (30-40 H.P.)	37-855211 6	37-855577 6	Inside Top Cowl
Merc/Mar 13, 59 ci (40-60 H.P.)	37-855211 8	37-855577 8	Top Cowl Inlet Duct
Merc/Mar 13, 85 ci (75-90 H.P.)	37-855211 10	37-855577 10	Block Exhaust Cover
Merc/Mar 14, 113 ci (100-115-125 H.P.)	37-855211 11	37-855577 11	Block Exhaust Cover
Merc/Mar 2.0L V6 Carb (135-150 H.P.)	37-855211 12	37-855577 12	Air Cover
Merc/Mar 2.5L 1998 V6 EFI/Carb (150-200 H.P.)	37-855211 13	37-855577 13	Vapor Separator (EFI) Air Cover (Carb)
Merc/Mar 3.0L V6 EFI/Carb (225-250 H.P.)	37-855211 14	37-855577 14	Vapor Separator (EFI) Air Cover (Carb)
Force S, 6 ci (5 H.P.)	37-855211 15	37-855577 15	Inside Top Cowl
Force 12, 15 ci (9.9-15 H.P.)	37-855211 16	37-855577 16	Inside Top Cowl
Force 13, 26 ci (25 H.P.)	37-855211 17	37-855577 17	Inside Top Cowl
Force 12, 50 ci (40-50 H.P.)	37-855211 18	37-855577 18	Inside Surface of Top Cowl
Force 13, 75 ci (75-90 H.P.)	37-855211 19	37-855577 19	Top of Block Near Exhaust Cover
Force 14, 103 ci (120 H.P.)	37-855211 20	37-855577 20	Top of Block Near Exhaust Cover
Merc/Mar 12, 323cc 4-Stroke (15 H.P.)	37-855211 22	37-855577 22	Inside Top Cowl
Merc/Mar 12, 232cc 4-Stroke (8-9.9 H.P.)	37-855211 23	37-855577 23	Inside Top Cowl
Merc/Mar 12, 498cc 4-Stroke (25 H.P.)	37-855211 24	37-855577 24	Inside Cover Top Cowl
Merc/Mar 14, 4-Stroke 935cc (45-50 H.P.)	37-855211 25	37-855577 25	Inside Top Cowl
Merc/Mar 2.5L V6 DFI (135-150 H.P.)	37-855211 26	37-855577 26	Intake Plenum STBD Side
Merc/Mar 3.0L V6 DFI (225 H.P.)	37-855211 27	37-855577 27	Intake Plenum STBD Side
Merc/Mar 2.5L Promax (150-225 H.P.)	37-855211 28	37-855577 28	Top of Flywheel Cover
Merc/Mar 2.5L EFI (260 H.P.)	37-855211 29	37-855577 29	Top of Flywheel Cover
Merc XR2	37-855211 30	37-855577 30	Top of Flywheel Cover
Merc/Mar Promax 300	37-855211 31	37-855577 31	Top of Flywheel Cover
Sport Jet 175	37-855211 32	37-855577 32	Side of Sound Attenuator
Sport Jet 120	37-855211 33	37-855577 33	Side of Sound Attenuator
Sport Jet 95	37-855211 34	37-855577 34	Side of Sound Attenuator
Sears S,6 ci (5 HP)	37-855211 35	37-855577 35	Inside Top Cowl
Sears 12, 15 ci (9.9 HP)	37-855211 36	37-855577 36	Inside Top Cowl
Sears 12, 15 ci (15 HP)	37-855211 37	37-855577 37	Inside Top Cowl
Sears 13, 26 ci (25 HP)	37-855211 38	37-855577 38	Inside Top Cowl