

Circulate to:  Sales Manager  Accounting  Service Manager  Technician  Parts Manager

## Throttle Lever Replacement – 75/90/115 EFI (4-Stroke) & EU 80/100/115 EFI (4-Stroke)

### Models Affected

Models Covered	Serial Number
75/90/115 EFI (4-Stroke) and EU 80/100/115 EFI (4-Stroke)	USA 1B366823 through 1B382088
EU 80/100/115 EFI (4-Stroke)	Belgium 0P459572 through 0P459654

### Situation

On affected outboards, the remote control throttle cable attachment pin molded into the engine mounted throttle lever can become loose and has the potential to break free from the throttle lever. Should the throttle cable attachment pin come completely free of the throttle lever, the throttle lever return spring would force the throttle lever to the idle position. Operation of the outboard's shift control would function normally with the engine's throttle control limited to idle speed. Mercury Marine has changed the design of the throttle lever to correct this issue. The above identified models will need to have the engine mounted throttle lever replaced. Many of the outboards have been reworked at the factory/OEM (refer to Repair Identification at the end of this service bulletin).

### Correction

Remove the top cowl and flywheel cover.

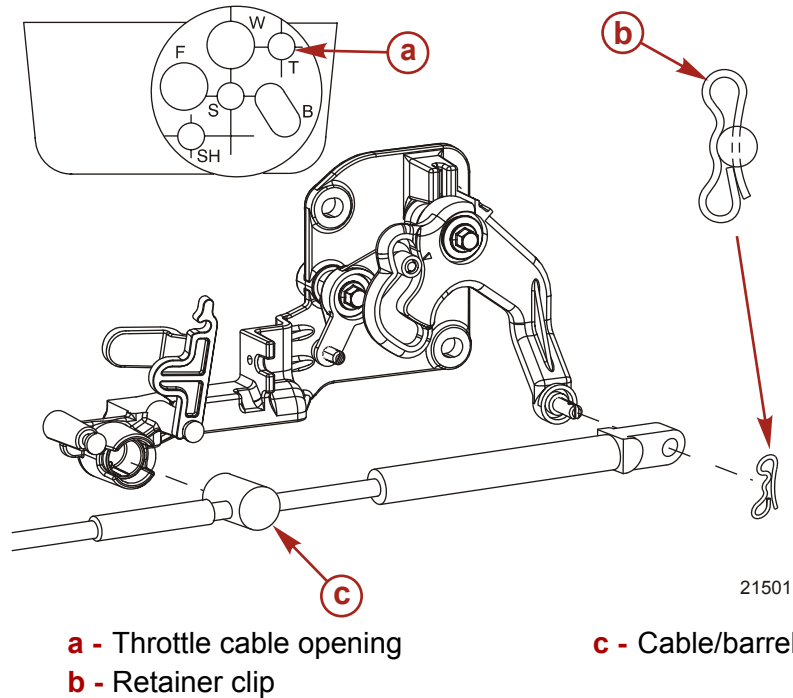
### RIGGED OUTBOARDS

1. Pull up the cowl seal and remove the access cover from the bottom cowl.
2. Cut the cable tie from the rigging grommet.
3. Remove the throttle cable from engine.
  - a. Remove the retainer clip from the throttle arm.
  - b. Open the barrel retainer cup latch.

THE INFORMATION IN THIS DOCUMENT IS CONFIDENTIAL AND PROTECTED BY COPYRIGHT AND IS THE PROPERTY OF MERCURY MARINE.

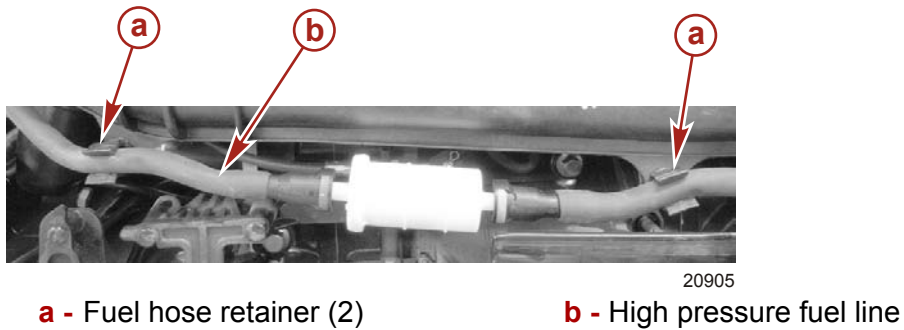
This document is provided for the sole and exclusive use of the original recipient as prescribed by Mercury Marine and may not be distributed or copied, digitally or otherwise, without the prior written consent of Mercury Marine.

c. Remove the throttle cable/barrel.



## ALL UNITS

1. Pull the high pressure fuel line from the retainers and position the fuel line down into the lower cowl to gain access to the throttle lever.

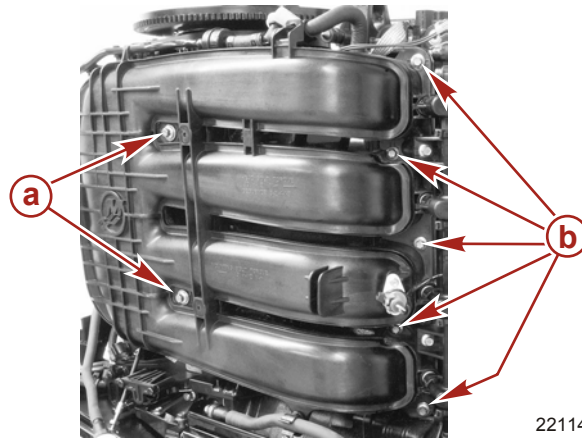


2. Remove the five screws securing the intake manifold to the cylinder head.
3. Remove the two screws with washers securing the intake manifold to the cylinder block.

THE INFORMATION IN THIS DOCUMENT IS CONFIDENTIAL AND PROTECTED BY COPYRIGHT AND IS THE PROPERTY OF MERCURY MARINE.

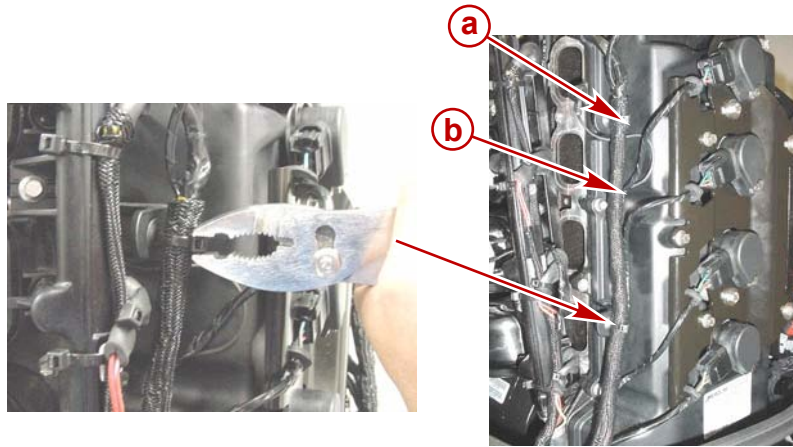
This document is provided for the sole and exclusive use of the original recipient as prescribed by Mercury Marine and may not be distributed or copied, digitally or otherwise, without the prior written consent of Mercury Marine.

4. Allow the intake manifold to rest in the lower cowl.



- a** - Screws with washer securing intake manifold to cylinder block (2)
- b** - Screws securing intake manifold to cylinder head (5)

5. Cut or twist off the two cable ties securing the ignition coil wiring harness to the mounting tabs located on the port side of the cam cover.



- a** - Cable tie (2)

- b** - Ignition coil wiring harness

THE INFORMATION IN THIS DOCUMENT IS CONFIDENTIAL AND PROTECTED BY COPYRIGHT AND IS THE PROPERTY OF MERCURY MARINE.

This document is provided for the sole and exclusive use of the original recipient as prescribed by Mercury Marine and may not be distributed or copied, digitally or otherwise, without the prior written consent of Mercury Marine.

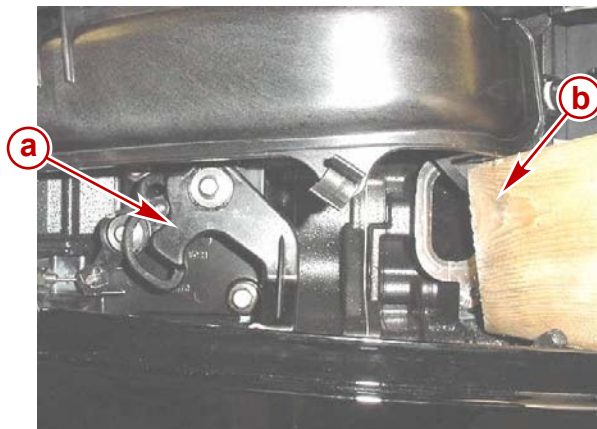
- Carefully lift/pull the ignition coil harness over the upper rear corner of the intake manifold, positioning the harness between the manifold and the cylinder head. This will provide enough slack in the harness so that the intake manifold can be moved to provide access to the throttle lever.



24266

**IMPORTANT: Use minimal force when lifting or moving the intake manifold assembly. Be careful not to strain any of the connecting wire harnesses, hoses, or cables.**

- Carefully lift up on the intake manifold to gain access to the throttle lever mounting bolt. Support the manifold in the elevated position using a suitable piece of blocking material (clean piece of wooden 2" X 4").



24267

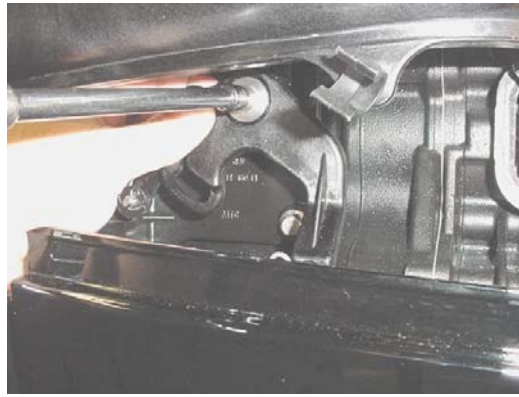
**a** - Throttle lever

**b** - Support blocking

THE INFORMATION IN THIS DOCUMENT IS CONFIDENTIAL AND PROTECTED BY COPYRIGHT AND IS THE PROPERTY OF MERCURY MARINE.

This document is provided for the sole and exclusive use of the original recipient as prescribed by Mercury Marine and may not be distributed or copied, digitally or otherwise, without the prior written consent of Mercury Marine.

8. Remove the throttle lever components as an assembly.



24269

9. Use your thumb and forefinger to secure all throttle lever components together during removal.



24268

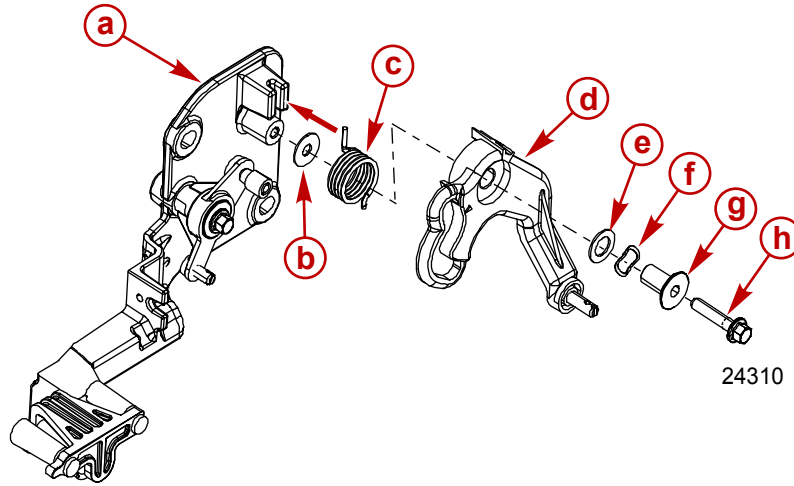
**IMPORTANT: Retain all throttle lever components, including the throttle cable retaining clip, for reassembly.**

10. Disassemble the throttle lever components and discard the existing throttle lever.
11. Clean any loose thread locking material from the throttle lever mounting bolt.

THE INFORMATION IN THIS DOCUMENT IS CONFIDENTIAL AND PROTECTED BY COPYRIGHT AND IS THE PROPERTY OF MERCURY MARINE.

This document is provided for the sole and exclusive use of the original recipient as prescribed by Mercury Marine and may not be distributed or copied, digitally or otherwise, without the prior written consent of Mercury Marine.

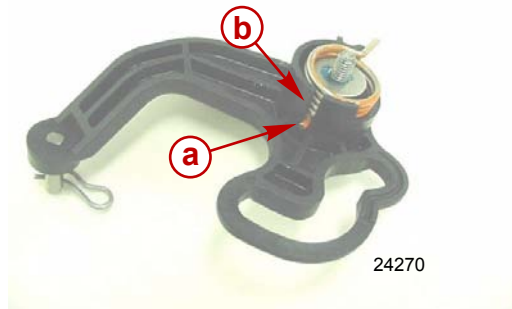
12. Reassemble the throttle lever components onto the new throttle lever identified with a green or yellow paint mark. Lubricate the spacer using 2-4-C with Teflon.



- a** - Throttle bracket
- b** - Washer
- c** - Throttle cam return spring
- d** - Throttle lever
- e** - Washer
- f** - Wave washer
- g** - Spacer
- h** - Bolt

Tube Ref No.	Description	Where Used	Part No.
95	2-4-C with Teflon	Spacer	92-802859A1

13. The short end of the throttle cam return spring must be positioned into the slot on the throttle lever.



- a** - Short end of throttle cam return spring
- b** - Slot on the throttle lever

14. Apply Loctite 242 Threadlocker to threads of throttle lever mounting bolt.

Tube Ref No.	Description	Where Used	Part No.
66	Loctite 242 Threadlocker	Throttle lever mounting bolt	92-809821

THE INFORMATION IN THIS DOCUMENT IS CONFIDENTIAL AND PROTECTED BY COPYRIGHT AND IS THE PROPERTY OF MERCURY MARINE.

This document is provided for the sole and exclusive use of the original recipient as prescribed by Mercury Marine and may not be distributed or copied, digitally or otherwise, without the prior written consent of Mercury Marine.

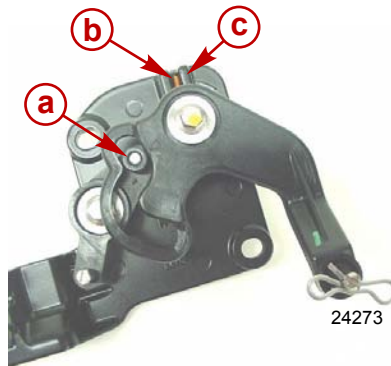
15. Install the throttle lever/components as an assembly.



24268

16. Assemble the throttle lever/components onto the throttle bracket. Hand start the throttle lever mounting bolt two to three turns and align the following features:

- a. Cam follower roller in the throttle lever cam track (slot) at the arrow position.
- b. Long end of the throttle cam spring with the notch in throttle bracket.



- a** - Cam follower roller inside throttle lever cam track (slot)
- b** - Long end of throttle cam return spring
- c** - Notch in throttle bracket

THE INFORMATION IN THIS DOCUMENT IS CONFIDENTIAL AND PROTECTED BY COPYRIGHT AND IS THE PROPERTY OF MERCURY MARINE.

This document is provided for the sole and exclusive use of the original recipient as prescribed by Mercury Marine and may not be distributed or copied, digitally or otherwise, without the prior written consent of Mercury Marine.



17. Rotate the throttle lever slightly clockwise to position the throttle lever stop just aft of the stop on throttle bracket. Holding this position, tighten the throttle lever mounting bolt to specification.



**a** - Throttle lever stop

24274

**b** - Throttle bracket stop

Description	Nm	lb. in.	lb. ft.
Throttle lever mounting bolt	8	70	

18. Ensure the throttle lever actuates the roller of the cam follower, and that the throttle lever springs back to the idle position.
19. Carefully remove the blocking material supporting the intake manifold assembly.
20. Carefully lift/pull the ignition coil harness over the upper rear corner of the intake manifold, positioning the harness on the outside of the intake manifold.



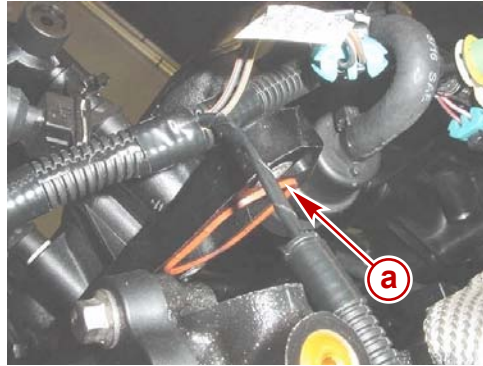
24275

THE INFORMATION IN THIS DOCUMENT IS CONFIDENTIAL AND PROTECTED BY COPYRIGHT AND IS THE PROPERTY OF MERCURY MARINE.

This document is provided for the sole and exclusive use of the original recipient as prescribed by Mercury Marine and may not be distributed or copied, digitally or otherwise, without the prior written consent of Mercury Marine.



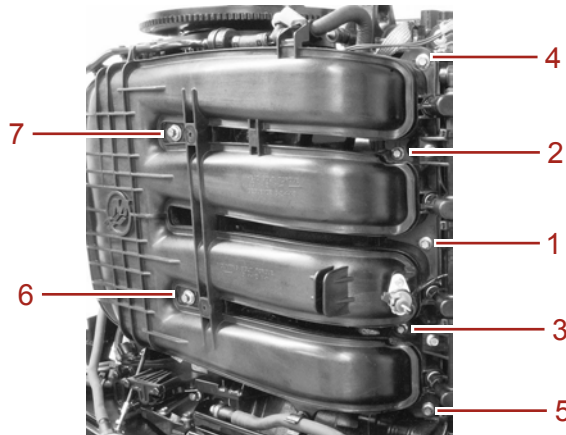
21. Ensure the four intake manifold seals are in position and that all wiring harnesses are clear of the manifold/cylinder head joint.



24276


**a** - Intake manifold seal (4)

22. Apply Loctite 242 Threadlocker to the threads of the seven intake manifold mounting screws.
23. Secure the intake manifold to the cylinder block with two screws with washers. Do not tighten the screws at this time.
24. Secure the intake manifold to the cylinder head with five screws. Do not tighten the screws at this time.
25. Tighten the seven intake manifold screws in the sequence shown to specification.



22145

**Torque Sequence**

Tube Ref No.	Description	Where Used	Part No.
 66	Loctite 242 Threadlocker	Intake manifold mounting screw	92-809821

Description	Nm	lb. in.	lb. ft.
Intake manifold screws	10	88.5	

26. Using two cable ties, secure the ignition coil wiring harness to the mounting tabs located on the port side of the cam cover.

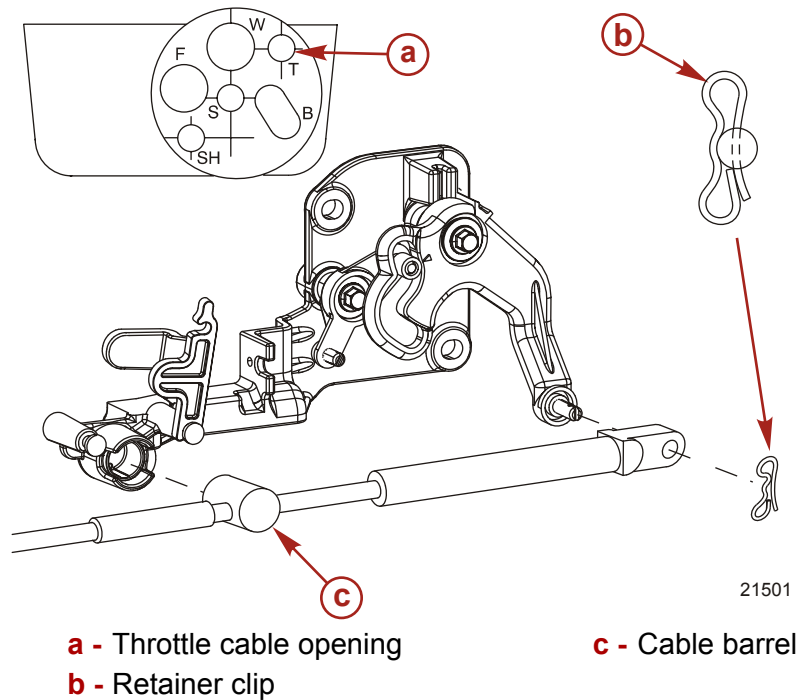
## Rigged Outboards

1. Position the remote control into neutral.

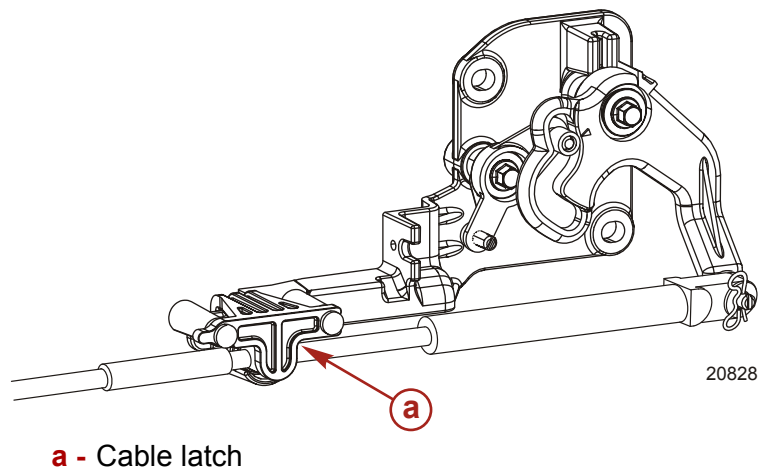
THE INFORMATION IN THIS DOCUMENT IS CONFIDENTIAL AND PROTECTED BY COPYRIGHT AND IS THE PROPERTY OF MERCURY MARINE.

This document is provided for the sole and exclusive use of the original recipient as prescribed by Mercury Marine and may not be distributed or copied, digitally or otherwise, without the prior written consent of Mercury Marine.

2. Install the throttle cable onto the throttle arm with the retainer clip.
3. Adjust the cable barrel so that the installed throttle cable will hold the throttle arm against the idle stop.
4. Fit the throttle cable through the front rubber grommet.
5. Place the cable barrel into the barrel retainer.



6. Lock the cable in place with the cable latch.

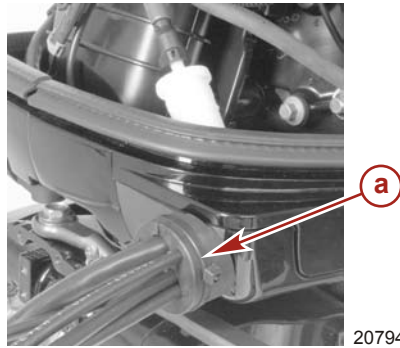


7. Reinstall the access cover with two bolts. Reattach the cowl seal.

THE INFORMATION IN THIS DOCUMENT IS CONFIDENTIAL AND PROTECTED BY COPYRIGHT AND IS THE PROPERTY OF MERCURY MARINE.

This document is provided for the sole and exclusive use of the original recipient as prescribed by Mercury Marine and may not be distributed or copied, digitally or otherwise, without the prior written consent of Mercury Marine.

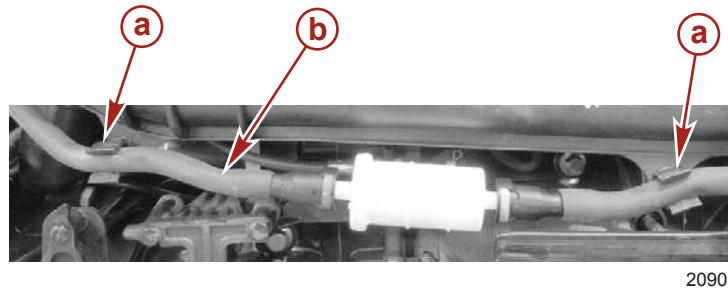
- Attach a cable tie around the outside of the front grommet.



**a** - Cable tie

## ALL UNITS

- Secure the high pressure fuel line back into the hose retainers.



**a** - Fuel hose retainer (2)

**b** - High pressure fuel line

- Install the flywheel cover and top cowl.

## Parts Required

Qty.	Description	Part Number
1	Throttle Lever	8M0008288

## Dealer Outboard Inventory

Affected outboards in dealer inventory should have the throttle lever replaced prior to customer delivery.

## Dealer Parts Inventory

No affected service replacement parts were released to dealers.

## Owner Notification

All registered owners within the affected serial number range will receive a letter from Mercury Marine. The letter will explain the situation and request that they contact their local dealer to set up an appointment to have their repair performed. This service will be performed at no cost to the customer.

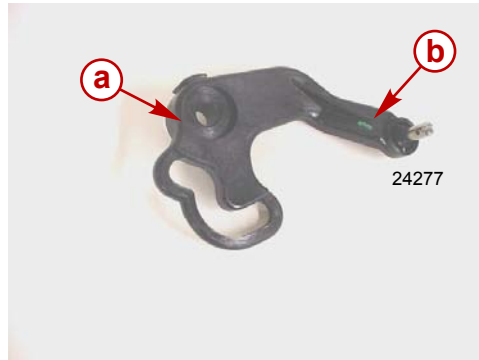
## Repair Identification

Outboards within the serial number range listed that have been reworked are identified by:

THE INFORMATION IN THIS DOCUMENT IS CONFIDENTIAL AND PROTECTED BY COPYRIGHT AND IS THE PROPERTY OF MERCURY MARINE.

This document is provided for the sole and exclusive use of the original recipient as prescribed by Mercury Marine and may not be distributed or copied, digitally or otherwise, without the prior written consent of Mercury Marine.

- Factory – A green dot sticker applied to the outboard serial number label on the shipping carton.
- Factory/Dealer – A green or yellow paint mark applied to the side of the throttle lever.



**a** - Throttle lever

**b** - Green or yellow paint mark

## Warranty

Mercury Marine will credit the dealer for the cost of parts and labor. Complete a warranty claim listing:

- Outboard serial number
- Select Program # 1-2006-011
- One half (0.5) hour labor
- Qty. 1 Throttle Lever - Part Number 8M0008288
- Warranty Flat Rate Code: SB05
- Part Code: 726
- Failure Code: 00

## US AND CANADA:

Complete/process the claim via MercNET or return a warranty claim form.

## INTERNATIONAL:

Follow instructions issued by Marine Power International office or by an authorized Marine Power Distributor.

THE INFORMATION IN THIS DOCUMENT IS CONFIDENTIAL AND PROTECTED BY COPYRIGHT AND IS THE PROPERTY OF MERCURY MARINE.

This document is provided for the sole and exclusive use of the original recipient as prescribed by Mercury Marine and may not be distributed or copied, digitally or otherwise, without the prior written consent of Mercury Marine.

Dear Mercury Outboard Owner

Thank you for your purchase of a Mercury Four Stroke Outboard engine. Mercury Marine is dedicated to providing superior reliability and customer satisfaction. As part of our commitment to superior customer satisfaction, we have determined that it is necessary to replace the throttle lever on your engine to insure the durability of your Mercury Outboard engine.

**What is the condition?**

It is possible that the engine mounted throttle lever may fail. Should the throttle lever fail, the throttle lever return spring would force the throttle lever to the idle position. Operation of the outboard's shift control would function normally with the engine's throttle control limited to idle speed. To eliminate the possibility of this occurring, Mercury Marine will replace the throttle lever (which has been redesigned to address this issue), at no charge to you.

**What will Mercury Marine do?**

Any authorized Mercury Marine dealer will perform the required inspection and if necessary replace the throttle lever at no charge to you.

**What should you do?**

Please contact your Mercury Outboard dealer and mention Service Bulletin 2006-11 to schedule an appointment to have the throttle lever replaced. Your dealer will be able to determine how long the repair will take on your engine.

**Please present this notice to your dealer when you bring your boat in for your service appointment.**

**What if you have other questions or if you no longer own this engine?**

Please contact your Mercury Outboard dealer or call Mercury Outboard Customer Service at 1-920-929-5040 between 7:30 AM and 5:30 PM CST.

We have sent this notice in the interest of your continued satisfaction with our product, and we sincerely regret any inconvenience this may cause you.

Thank you for boating with Mercury Marine

Mercury Marine Service