

Circulate to:  Sales Manager  Accounting  Service Manager  Technician  Parts Manager

## Fuel Supply Module (FSM) Float Switch Service Recommendation - 135/150/175 Verado and 200/225/250/275 Verado

### Models Affected

| Models Covered            | Serial Number Or Year                            |
|---------------------------|--|
| 135/150/175 Verado L4     | Model Year 2006/Gen I<br>1B517158 and Below      |
| 200/225/250/275 Verado L6 | Model Year 2005–2006/Gen I<br>1B517433 and Below |

### Situation

With the introduction of the Generation II Verado product, Mercury Marine has implemented an improved float switch within the fuel supply module (FSM). The materials selected for the construction of this switch were chosen to ensure the integrity of the switch itself, even when exposed to higher ethanol concentrations. Currently, this improved float switch is used as the only service replacement float switch for all Verado products.

When servicing a warrantable fuel related float switch issue on a multi outboard Verado boat package, Mercury Marine will upgrade the FSM float switches on the remaining Verado outboards of the boat. This service will be performed at no cost to the customer for the above identified models.

### Part Identification

#### FUEL SUPPLY MODULE (FSM)

Prior to the removal/disassembly of a functional fuel supply module, determine that the FSM and/or the float switch has not been previously replaced (see FSM/float switch replacement identification following). With the identification of a previously replaced/upgraded FSM and/or float switch, repair is not necessary and it will not be covered under this bulletin.

A FSM float switch upgrade replacement can be identified by:

- A green paint mark applied to the 6 pin FSM wiring harness connector. The connector is located in the lower cowling of the outboard (rear starboard for the Verado L6 and rear port for the Verado L4).

A FSM assembly upgrade replacement can be identified by the part number printed on the FSM:

THE INFORMATION IN THIS DOCUMENT IS CONFIDENTIAL AND PROTECTED BY COPYRIGHT AND IS THE PROPERTY OF MERCURY MARINE.

This document is provided for the sole and exclusive use of the original recipient as prescribed by Mercury Marine and may not be distributed or copied, digitally or otherwise, without the prior written consent of Mercury Marine.

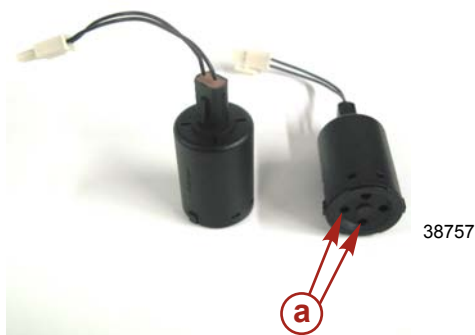
| Model     | FSM Part Number (Printed on Part) | FSM Service Replacement Part Number |
|-----------|-----------------------------------|-------------------------------------|
| Verado L4 | 880596-009                        | 880596T08                           |
| Verado L6 | 880596-008                        | 880596T06                           |



**a** - Upgraded FSM part number (Verado L4 shown)

## FLOAT SWITCH

If the FSM is disassembled and the float switch has round holes, the float switch has been replaced previously and is a good serviceable part. No replacement is needed. If the float switch does not have the round holes at the bottom end, replace the switch.



**a** - Round holes indicate the latest float switch

## Correction

**IMPORTANT:** Replace the fuel supply module (FSM) float switch, following the procedures and cautions outlined in the appropriate Verado service manual.

**IMPORTANT:** Thoroughly flush internal FSM tank compartment/components with solvent and dry using low pressure compressed air. Make sure all debris has been removed from FSM components prior to reassembly.

**NOTE:** An improved FSM fuel pressure regulator reference hose which is more resistant to the adverse effects of ethanol is also being offered. This new hose kit should be installed when replacing a FSM float switch in accordance with this service bulletin. Please follow the installation instructions which are included with the FSM Reference Hose Kit.

1. Remove and disassemble fuel supply module (FSM).
2. Drain, clean, and inspect all FSM components. Replace the fuel pressure regulator reference hose, as outlined in the installation instruction included with the FSM Reference Hose Kit. Ensure that all debris has been removed.

THE INFORMATION IN THIS DOCUMENT IS CONFIDENTIAL AND PROTECTED BY COPYRIGHT AND IS THE PROPERTY OF MERCURY MARINE.

This document is provided for the sole and exclusive use of the original recipient as prescribed by Mercury Marine and may not be distributed or copied, digitally or otherwise, without the prior written consent of Mercury Marine.

3. Install a new float switch and reassemble FSM using a new top seal for the cover.
4. Reinstall FSM and reassemble outboard.

**NOTE:** For initial start of a new engine, or for an engine that ran out of fuel or was drained of fuel, the fuel system should be filled as follows: Turn the ignition key switch to the "ON" position for approximately one minute. This operates the fuel lift pump. Turn the ignition key switch back to the "OFF" position and then return the ignition key switch to the "ON" position again for an additional minute. Turn the ignition key switch back to the "OFF" position. The filling of the fuel system is complete.

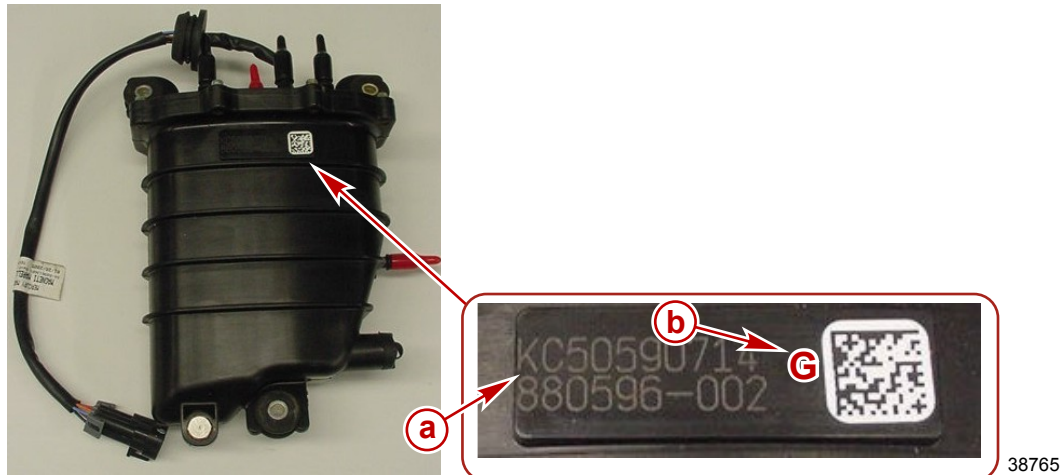
## Parts Required

| Qty. | Description                        | Part Number  |
|------|------------------------------------|--------------|
| 1    | Float switch                       | 880596524    |
| 1    | Top seal, fuel supply module (FSM) | 26-880596502 |
| 1    | FSM reference hose kit             | 32-880596A05 |

## Repair Identification

After the FSM float switch has been inspected and/or replaced, the FSM repair should be identified as follows:

- Use an awl to scribe a "G" into the FSM tank following the date code. G = Known good float switch.



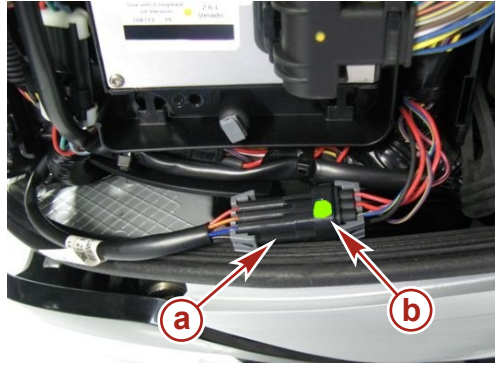
**a** - FSM date code

**b** - Scribe a "G" to indicate a known good float switch

THE INFORMATION IN THIS DOCUMENT IS CONFIDENTIAL AND PROTECTED BY COPYRIGHT AND IS THE PROPERTY OF MERCURY MARINE.

This document is provided for the sole and exclusive use of the original recipient as prescribed by Mercury Marine and may not be distributed or copied, digitally or otherwise, without the prior written consent of Mercury Marine.

- Place a green paint dot on the FSM wiring harness connector. This identification marking should be easily seen with the top/rear cowl removed.



- a** - FSM wiring harness - Verado L6 shown, starboard rear–Verado L4, port rear
- b** - Green paint mark - Upgraded FSM/float switch

## Dealer Parts Inventory

**USA customers:** Return any unused (original packaged) P/N 880596504 or P/N 880596522 FSM float switches in your inventory using the Mercury Precision Parts UNDER 30 DAYS RETURN PROGRAM. You may use the form on the back of any parts and accessory packing list. Please note on the form that the return is part of Service Bulletin 2008-10. All returns must be sent freight prepaid to:

Mercury Marine  
Attn: Return Goods  
W6250-20C Pioneer Road  
Fond du Lac, WI 54936

**Non-USA customers:** Return any unused (original packaged) P/N 880596504 or P/N 880596522 FSM float switches in your inventory to the appropriate distribution center for credit. Follow the normal return parts procedure. Please make reference to Service Bulletin 2008-10.

## Warranty

Mercury Marine will credit the dealer for the cost of parts and labor. Complete a warranty claim listing:

- Outboard serial number
- Qty. 1, P/N 880596524 FSM float switch
- Qty. 1, P/N 26-880596502 FSM top seal
- Qty. 1, P/N 32-880596A05 FSM reference hose kit

Verado L6

- 1.7 hour labor - first (failed) float switch and reference hose replacement; includes CDS diagnostic time
- Warranty flat rate code: CF58, CI89, and SB02
- 1.0 hour labor - each additional float switch and reference hose replacement
- Warranty flat rate code: CF58 and SB02

–or–

- 0.4 hour labor - FSM inspection only

THE INFORMATION IN THIS DOCUMENT IS CONFIDENTIAL AND PROTECTED BY COPYRIGHT AND IS THE PROPERTY OF MERCURY MARINE.

This document is provided for the sole and exclusive use of the original recipient as prescribed by Mercury Marine and may not be distributed or copied, digitally or otherwise, without the prior written consent of Mercury Marine.

- Warranty flat rate code: SB04

Verado L4

- 1.9 hour labor - first (failed) float switch and reference hose replacement; includes CDS diagnostic time
- Warranty flat rate code: CF58, CI89, and SB02
- 1.2 hour labor - each additional float switch and reference hose replacement
- Warranty flat rate code: CF58 and SB02

**-or-**

- 0.6 hour labor - FSM inspection only
- Warranty flat rate code: SB06

**-all-**

- Part code: 786
- Failure code: 00

## US AND CANADA

Complete and process the claim via MercNET or return a warranty claim form.

## INTERNATIONAL

Follow instructions issued by the Marine Power International office or by an authorized Marine Power Distributor.

THE INFORMATION IN THIS DOCUMENT IS CONFIDENTIAL AND PROTECTED BY COPYRIGHT AND IS THE PROPERTY OF MERCURY MARINE.

This document is provided for the sole and exclusive use of the original recipient as prescribed by Mercury Marine and may not be distributed or copied, digitally or otherwise, without the prior written consent of Mercury Marine.