

Circulate to: Sales Manager Accounting Service Manager Technician Parts Manager

New Steering Drag Link Nut (P/N 8M0042636)

Models Affected

Models Covered	Part Number
Mercury/Mariner/Force engines using cable steering systems and 0.375-24 nut	826709113

Situation

The current stainless steel 0.375-24 nut (P/N 826709113) may have a galling issue during installation to the steering link rod assembly.

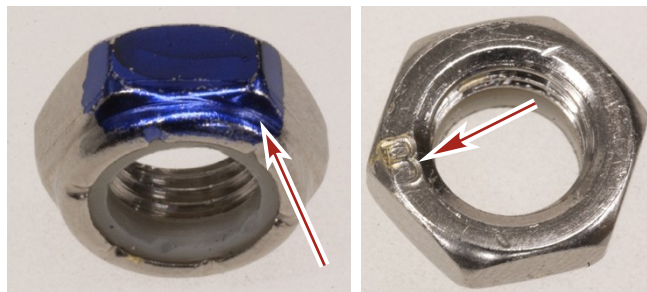
Correction

A new nut has been developed to eliminate the galling issue.

- Brass 0.375-24 nut (P/N 8M0042636)

The torque value remains the same per application as called out in the respective service manuals.

The new nut will be nickel plated and will look similar to the stainless steel nut it replaces. The new nut will have a blue marking on one flat of the hex for a limited time in production. After the initial blue identification, a "B" will be stamped on the face of the nut.



46950

Part Interchangeability

P/N 8M0042636 supersedes P/N 826709113.

THE INFORMATION IN THIS DOCUMENT IS CONFIDENTIAL AND PROTECTED BY COPYRIGHT AND IS THE PROPERTY OF MERCURY MARINE.

This document is provided for the sole and exclusive use of the original recipient as prescribed by Mercury Marine and may not be distributed or copied, digitally or otherwise, without the prior written consent of Mercury Marine.