

Circulate to: Sales Manager Accounting Service Manager Technician Parts Manager

150 FourStroke Shift Followers and Cams

Models Affected

Models Covered	Serial Number Or Year
150 FourStroke	All models

Scope

Worldwide

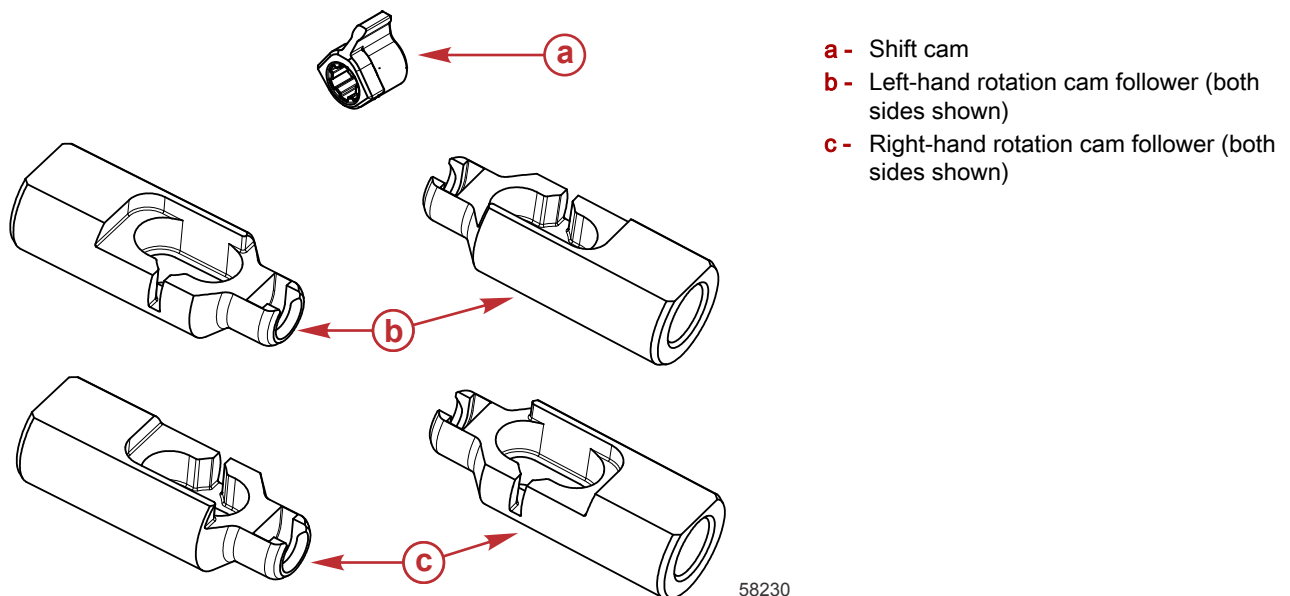
Situation

The purpose of this bulletin is to identify the new replacement components for the 150 FourStroke shift followers and cams. The old components will be no longer available (NLA).

Mercury Marine will offer a kit containing the new components for both right-hand and left-hand rotation gearcases for the 150 FourStroke. Please refer to the following part numbers:

- 8M0105206 for right-hand rotation gearcases
- 8M0105207 for left-hand rotation gearcases

NOTE: The shift follower and cam must be replaced as a set.




- Lubricate the pocket on the cam follower with 2-4-C with PTFE. This will help retain the shift cam onto the cam follower.

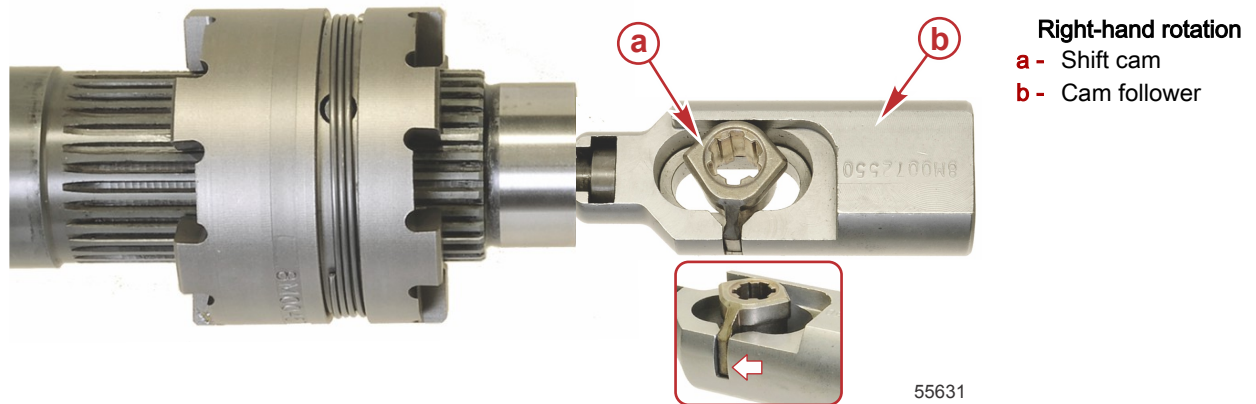
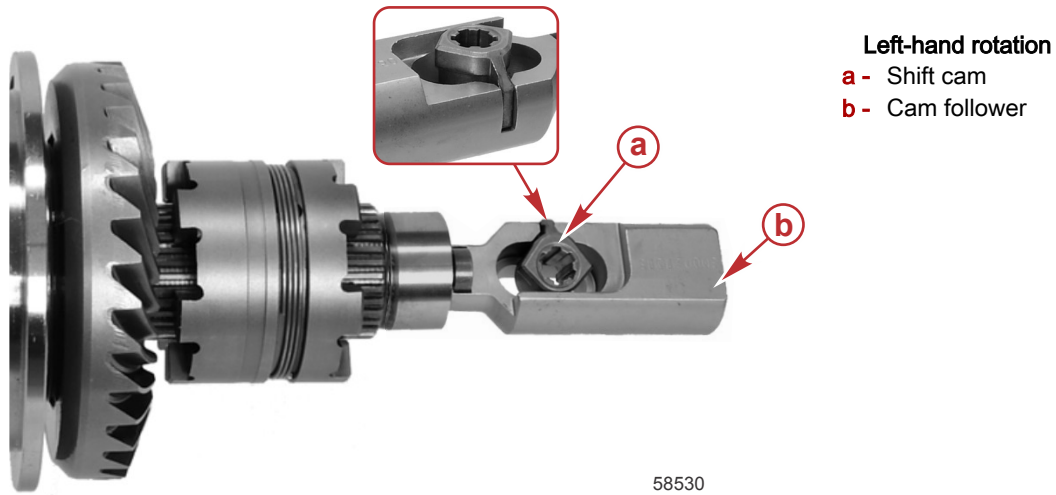
THE INFORMATION IN THIS DOCUMENT IS CONFIDENTIAL AND PROTECTED BY COPYRIGHT AND IS THE PROPERTY OF MERCURY MARINE.

This document is provided for the sole and exclusive use of the original recipient as prescribed by Mercury Marine and may not be distributed or copied, digitally or otherwise, without the prior written consent of Mercury Marine.

150 FourStroke Shift Followers and Cams

Tube Ref No.	Description	Where Used	Part No.
 95	2-4-C with PTFE	Pocket on the cam follower	92-802859A 1

- Install the shift cam into the cam follower pocket as shown.



THE INFORMATION IN THIS DOCUMENT IS CONFIDENTIAL AND PROTECTED BY COPYRIGHT AND IS THE PROPERTY OF MERCURY MARINE.

This document is provided for the sole and exclusive use of the original recipient as prescribed by Mercury Marine and may not be distributed or copied, digitally or otherwise, without the prior written consent of Mercury Marine.