



MERCRUISER SERVICE BULLETIN

Section: V1 (Alternator System)
Number: 86301
Date: 3/27/63

Beaver Dam, Wis.
U.S.A.

Electrical Accessory Wiring Connections

ELECTRICAL ACCESSORY WIRING CONNECTIONS

It has been brought to our attention that electrical accessories, such as running lights, interior lights, horns, additional instruments, etc., are being connected to the instrument panel wiring and/or terminals. In some cases, this has resulted in damage to the component parts of the instrument panel and alternator system, thus rendering the alternator system inoperative.

Failure to comply with the following may result in damage to the alternator system and its component parts and will void the warranty.

1. Instrument Panels Which Have Indicator Light (Figure 1)

- a. Electrical accessories must not be connected to any wires or terminals of this instrument panel or wiring harness.
- b. All accessories must be connected directly to the battery.

Warranty will be void if any accessory is connected into this panel, and/or wiring circuit is modified in any way.

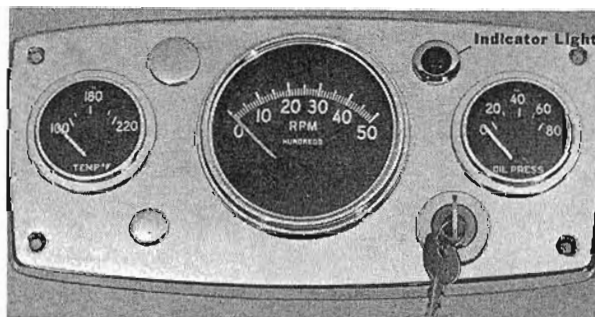


Figure 1

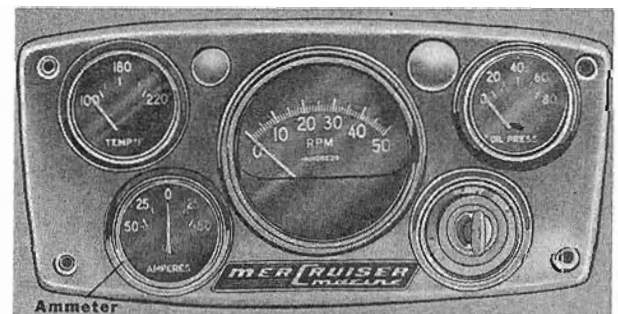


Figure 2

2. Instrument Panels Which Have Ammeter (Figure 2)

Provision has been made to connect accessories into wiring of this panel. The accessories may have current requirements up to 20 amps. Connections are to be made as follows:

- a. Connect positive (+) accessory lead to unused terminal screw on fuse block located on back of panel. ("A" in Figure 3 or 4)
- b. Install fuse rated to cover accessory current requirements up to 20 amps. in fuse block.
- c. Connect accessory ground (-) wire to stud on water temperature gauge marked "GRD". ("B" in Figure 3)

NOTE: Some instrument panels do not have ground stud on water temperature gauge. On these panels, connect ground (-) wire to stud on tachometer. ("B" in Figure 4)

- Warranty will be void if accessories are connected to any other point of the instrument panel, and/or wiring circuit is modified in any way. Accessories can be connected directly to the battery.*

(OVER)

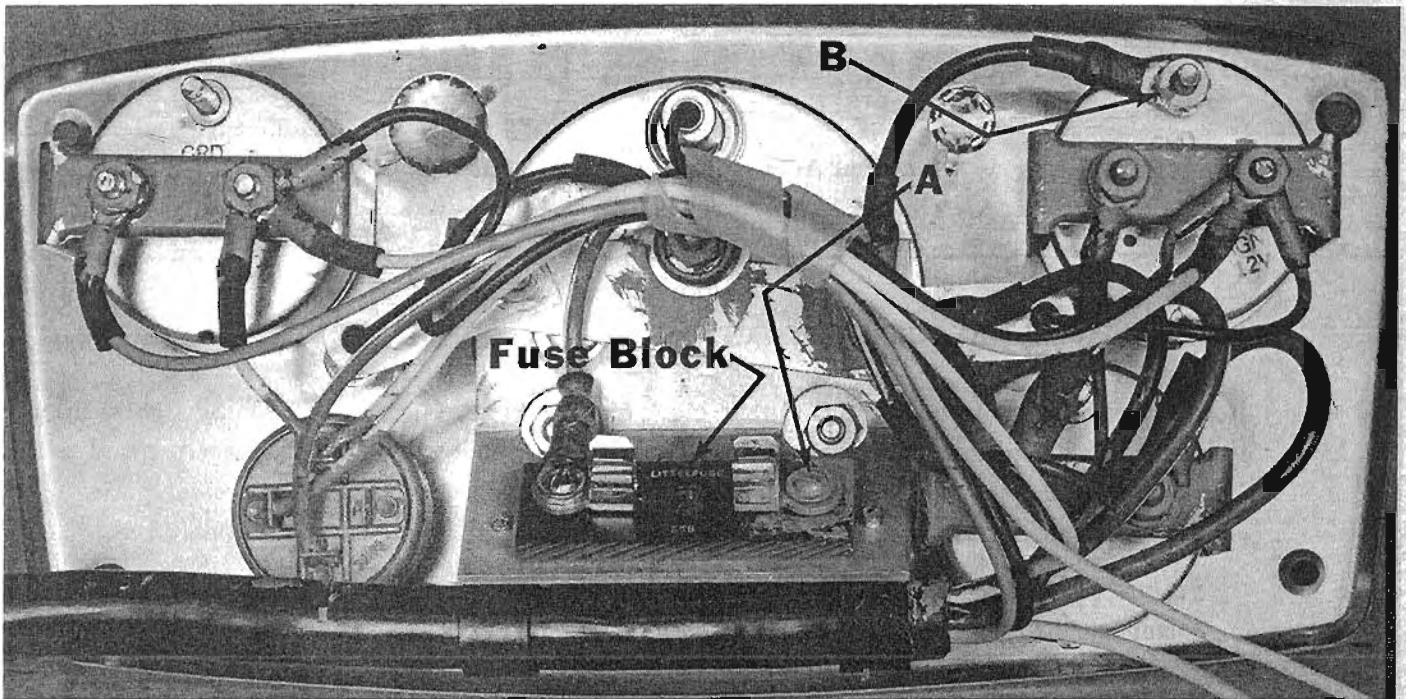


Figure 3

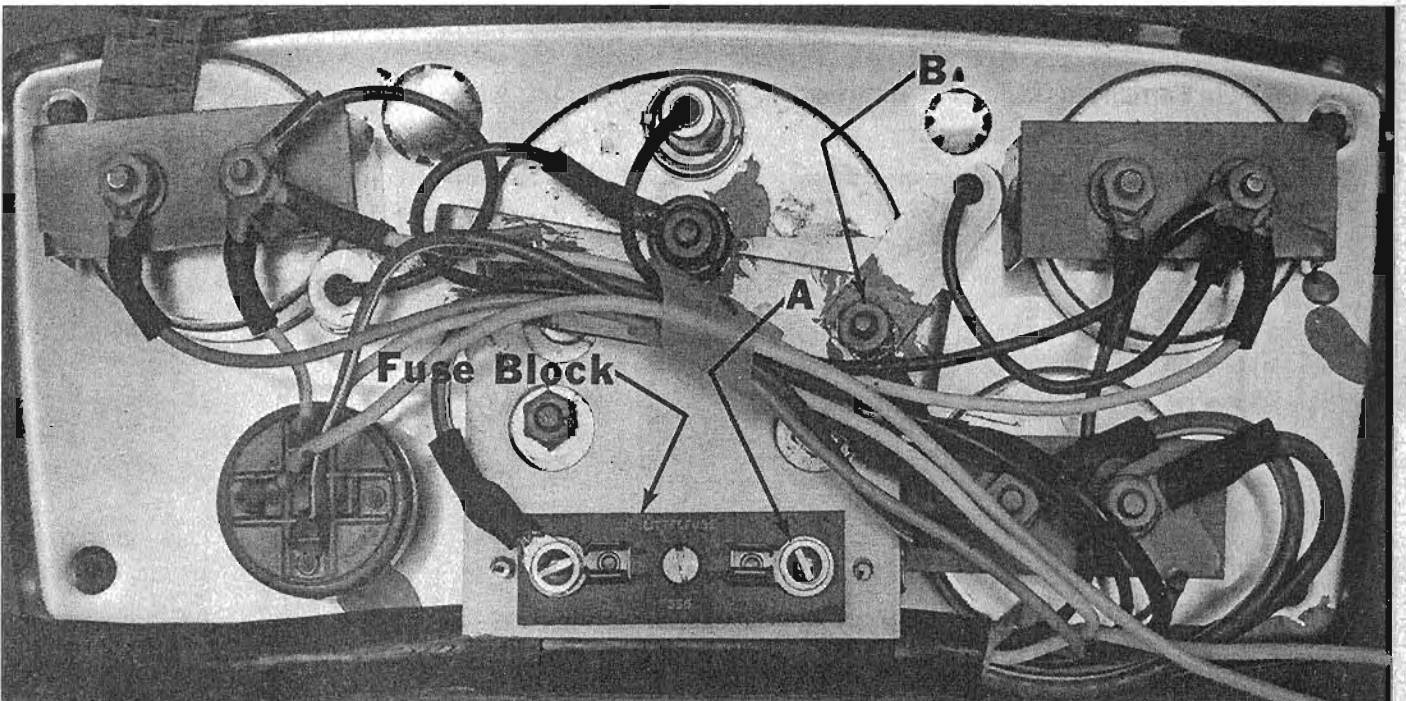


Figure 4

WARNING! Any failure of electrical or ignition parts, due to use of instrumentation or wiring changes, other than those furnished as standard equipment by the Kiekhaefer Corporation, will void the warranty of those electrical or ignition parts which fail as a result of the changes.