



MERCUISER SERVICE BULLETIN

Section: XI (Tools)

Number: 65-Db

Date : 4/22/65

New MerCruiser Service Tools

A. MERCUISER II 2:1 HEAVY-DUTY LOWER UNIT TOOLS

(Order the 3 Tools Listed Below Only if It Is Known That There Are Heavy Duty Units in Your Area.)

1. Gear Case Cover Tool (C-91-38457)

Gear Case Cover Tool (C-91-38457) is required for removing and installing the gear housing cover of MerCruiser II 2:1 Heavy-Duty lower unit. (Figure 1)

C-91-38457

Gear Case Cover Tool

\$ 9.45 Net U.S.

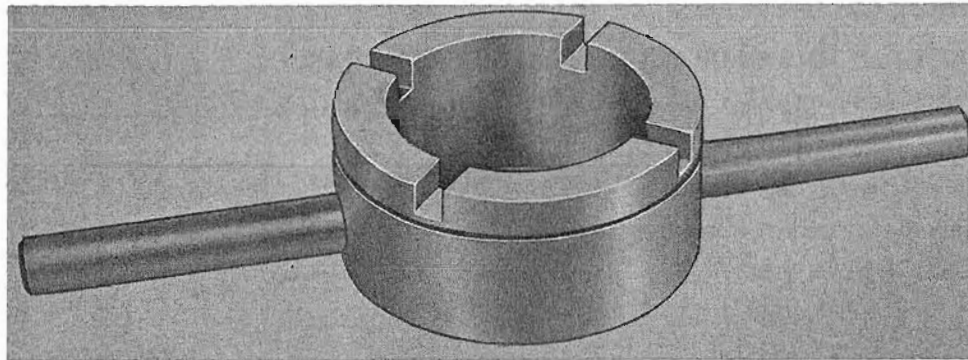


Figure 1.
Gear Case
Cover
Tool

2. Bearing Cup Pusher (C-91-38761)

Place Bearing Cup Pusher (C-91-38761) (Figure 2) in propeller shaft forward bearing cup and press or tap bearing cup into MerCruiser II 2:1 Heavy-Duty gear housing.

C-91-38761

Pusher, Bearing Cup

\$ 1.85 Net U.S.

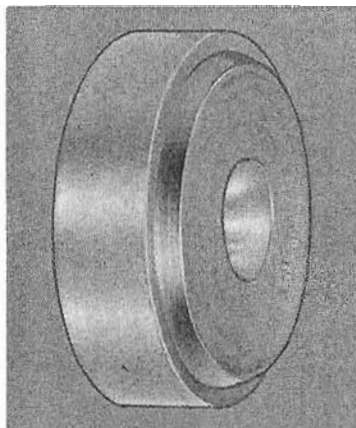
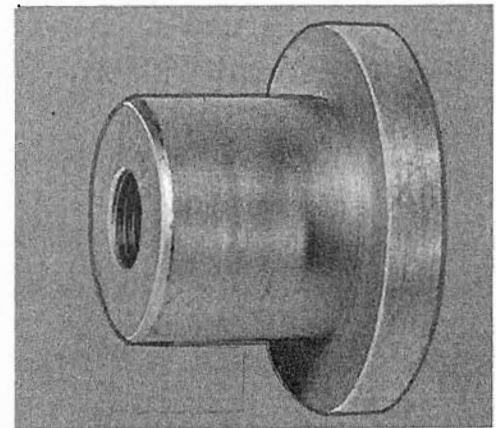


Figure 2.
Bearing
Cup Pusher

Figure 3.
Pull Rod Head



3. Pull Rod Head (C-91-38762)

Used in conjunction with Bearing Removal and Installation Kit (C-91-31229A3) for installing drive shaft roller bearing into MerCruiser II 2:1 Heavy-Duty gear housing. Place bearing on pullerhead (Figure 3) and insert into bearing cavity from bottom. Thread shaft into puller head from top and place plate and nut on shaft. Turn nut on shaft to draw bearing into bearing cavity.

C-91-38762

Head, Pull Rod

\$ 2.25 Net U.S.

B. PLIERS - PROPELLER NUT LOCK TAB (C-91-38277)

The pliers (Figure 4) are designed to bend the lock tabs up on MerCruiser I and 6-cylinder outboard propeller locknuts and prevent damage to the diffuser ring.

Place pointed jaw of pliers into counter-bore at end of propeller shaft and lip of other jaw over bent down tab. (Figure 5) Squeeze pliers' handles together and straighten tab.

C-91-38277

Pliers - Propeller Nut Lock Tab

\$ 2.80 Net U.S.

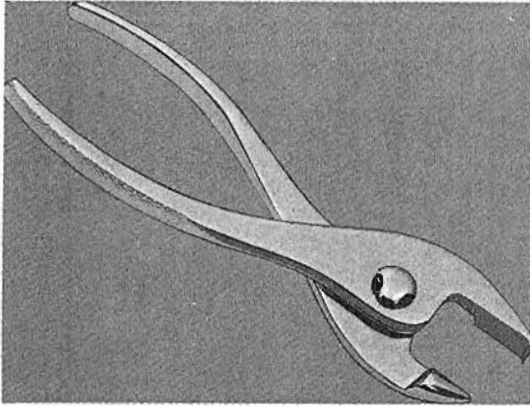


Figure 4.
Propeller
Nut Lock
Tab Pliers

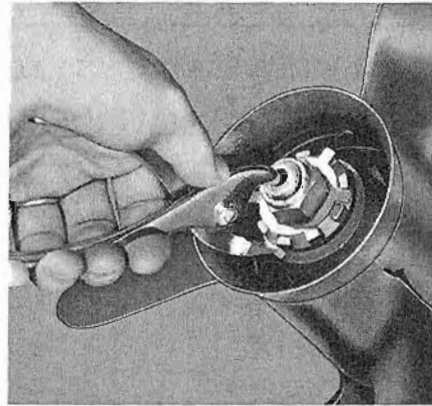


Figure 5.
Bending
Lock Tabs

C. UPPER & LOWER GEAR TOOLS FOR MERCUISER II DESIGN CHANGE

1. Gear Locknut Wrench (C-91-32329, \$9.25 Net U.S.)

A design change has been made in Gear Locknut Wrench (C-91-32329) which utilizes the wrench in removing and installing the lower gear locknut, as well as the upper gear locknut, when repairing MerCruiser II drive shaft housing assemblies.

Rework your present tool, as shown in Figure 6, or order a new tool (C-91-32329) from your factory branch or distributor. Use the tool according to instructions for MerCruiser II drive shaft housing repair in your MerCruiser Service Manual, Section 2.

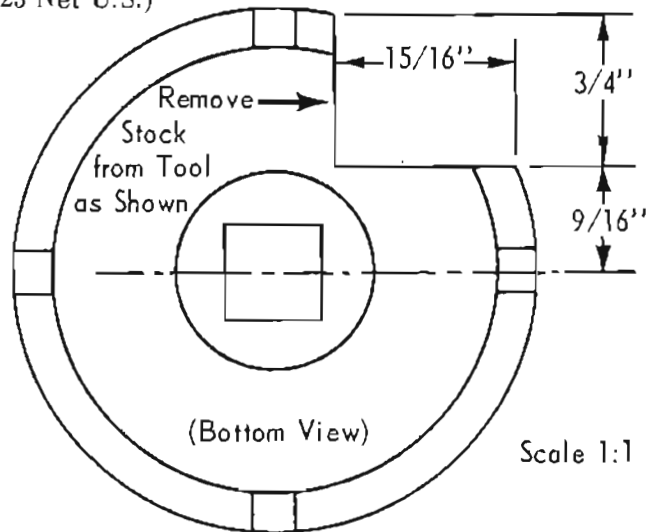


Figure 6. Rework Gear Locknut Wrench

2. Wrench Adaptor (C-91-32332A1, \$6.25 Net U.S.)

A design change, incorporated in the Wrench Adaptor (C-91-32332A1), will enable the tool to be used for repairs of the upper drive shaft housing gear as well as lower gear when repairing MerCruiser II drive shaft housing assemblies. Rework your present tool (Figure 7) or order a new tool from your distributor or factory branch.

To complete the design change, a screw (B-10-32636) and washer (B-12-36103) are required. If screw and washer are not available in your stock, order from your distributor or branch. Use the tool according to instructions for MerCruiser II drive shaft housing repair in your MerCruiser Service Manual, Section 2.

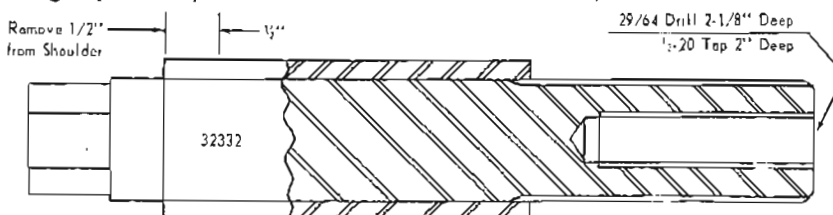


Figure 7.
Rework
Wrench
Adaptor