

CIRCULATE TO:
SERVICE MANAGER
PARTS MANAGER
MECHANICS

- A. Models 120-thru-470 Transom Assemblies with External Return Line Trim Cylinder
- B. Power Trim Pump Vent Screw and Washer

A. MODELS 120-thru-470 TRANSOM ASSEMBLIES with EXTERNAL RETURN LINE TRIM CYLINDER

(Attach Bulletin Reference Sticker on Section 7A Index Page in Your Service Manual.)

Models 120-thru-470 transom assemblies, Serial No. 05643699 thru 05644031, with external return line trim cylinders should have the trim cylinders replaced because of potential internal leakage.

Since supplies of replacement external return line trim cylinders are limited, please replace all of these cylinders with Part No. B-45706A14 and Hydraulic Hose B-32-86036. Return removed cylinders (with warranty claim) to local Branch or Distributor for credit of replacement cylinders and hoses. Transom serial number must be included on warranty claim. Labor rate is 0.5 hours per transom assembly.

Future transom production with external return line trim cylinders will have an "XO" or "O" stamped on piston rod approximately $\frac{3}{4}$ " (19mm) from the point that the eye is welded to rod. (Figure 1) Cylinders, which are marked with an "XO" or "O", NEED NOT BE replaced.

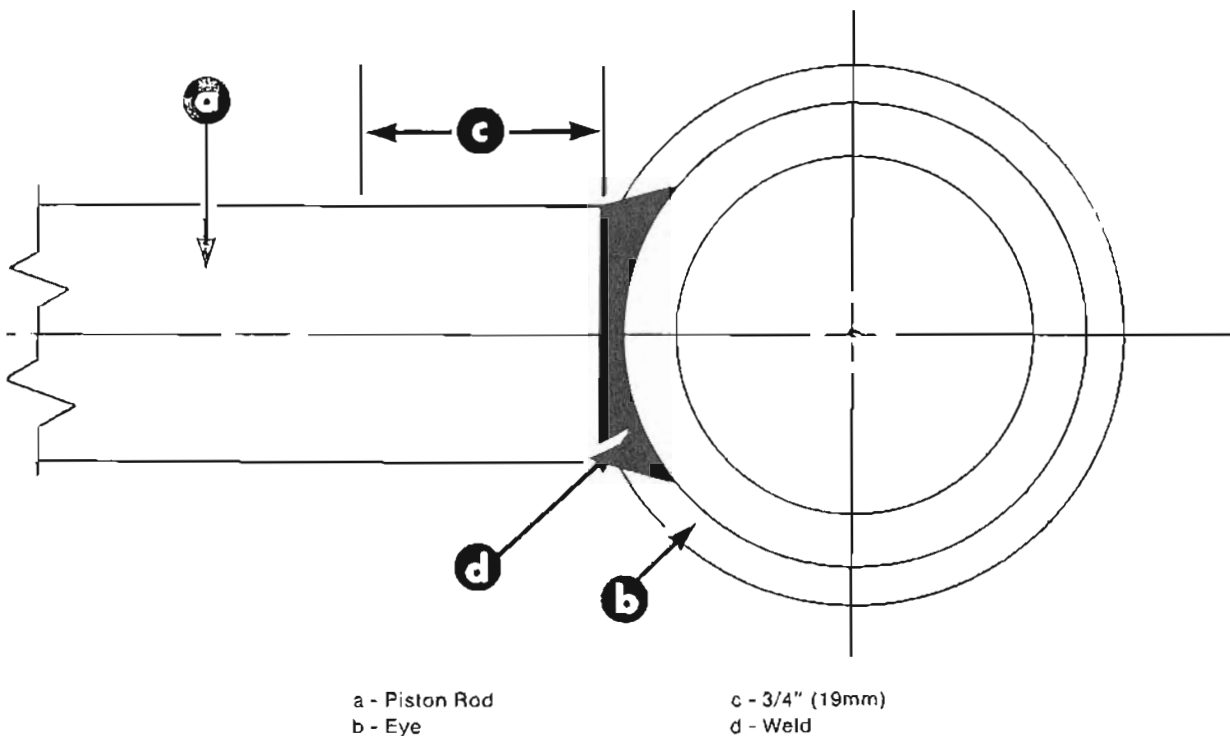


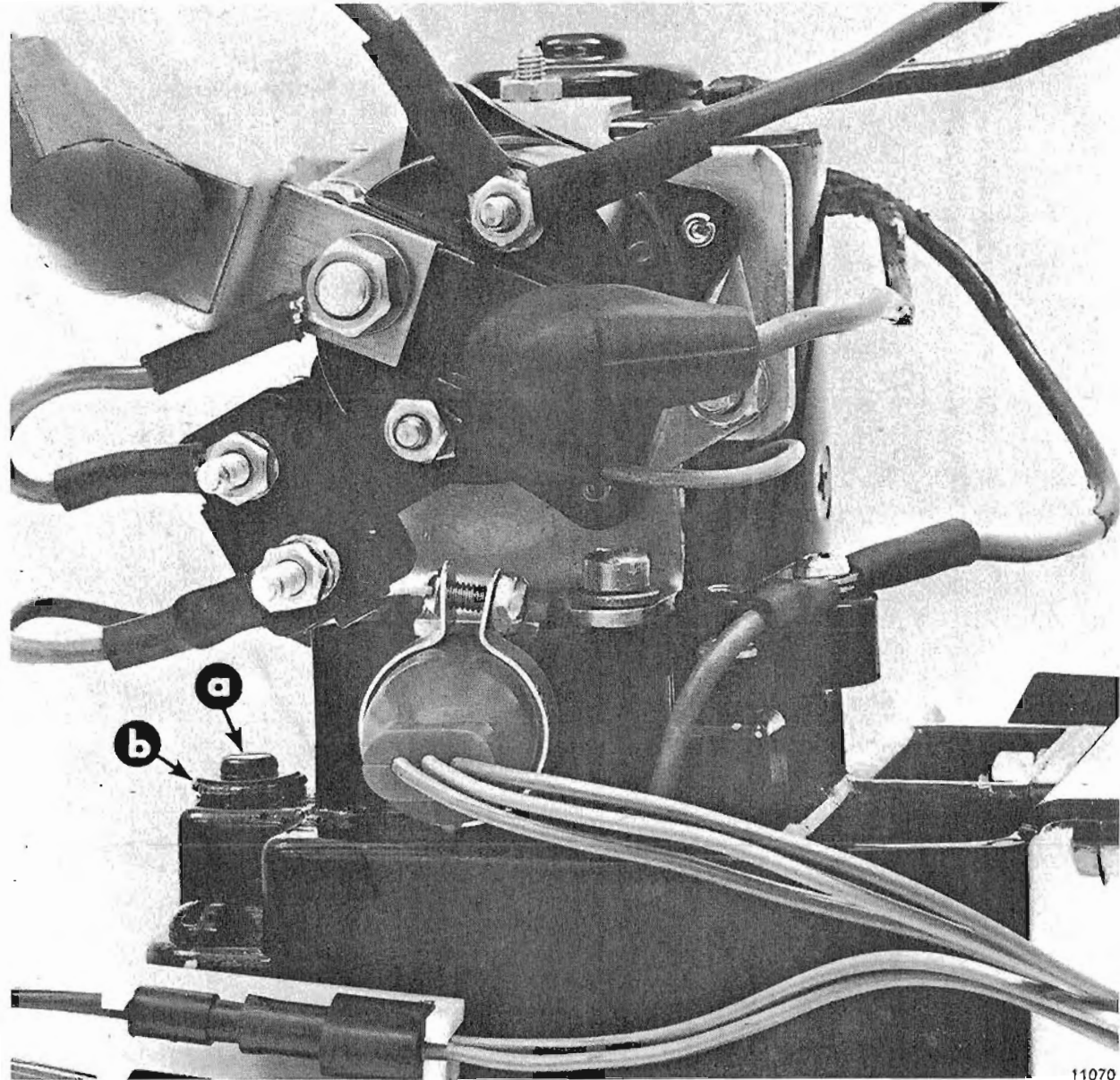
Figure 1. Location of "X" on Piston Rod

(OVER)

B. POWER TRIM PUMP VENT SCREW and WASHER

(Attach Bulletin Reference Sticker to P. 2A-9 of Your Service Manual.)

After installation of Power Trim pump, the vent screw (Figure 2) must be loosened 2 full turns for proper pump operation. However, for a short time a rubber washer was used on the vent screw. This washer will not allow the pump to vent sufficiently. The rubber washer, therefore, **MUST BE REMOVED** on all these trim pumps and the vent screw reinstalled and loosened 2 full turns.



a - "Vent" Screw

b - Washer (Remove)

Figure 2. Vent Screw and Washer Location

11070