

CIRCULATE TO:
 SERVICE MANAGER
 PARTS MANAGER
 MECHANICS
 "Place in a Service
 Bulletin Binder"

Subject: A. TIMING CHANGE - ALL MCM 300 TEMPEST MODELS
 B. INCREASED CUP ON QUICKSILVER CLEAVER PROPELLERS

A. TIMING CHANGE - ALL MCM 300 TEMPEST MODELS

All MCM 300 Tempest engines should have the timing reset to 8° BTDC (was 10° BTDC). The "Operation and Maintenance Manual" will be changed to 8° BTDC at next printing, until then, please cross out 10° BTDC and write 8° BTDC in "Specifications" chart. Starting serial number of production engines that have been set at 8° BTDC is listed below.

MCM 300 Tempest S/N A434260 and above

B. INCREASED CUP ON QUICKSILVER CLEAVER PROPELLERS

Future production MerCruiser I and TRS Cleaver propellers (part numbers listed below) will be manufactured with additional cup in the trailing edge of the blades. (Figure 1)

CLEAVER PROPELLERS

Solid Hub (TRS Only)		Rubber Hub	
48-74597A4	48-74601A4	48-89799A5	48-89803A5
48-74598A4	48-74602A4	48-89800A5	48-89804A5
48-74599A4	48-74603A4	48-89801A5	48-89805A5
48-74600A4	48-74604A4	48-89802A5	48-89806A5

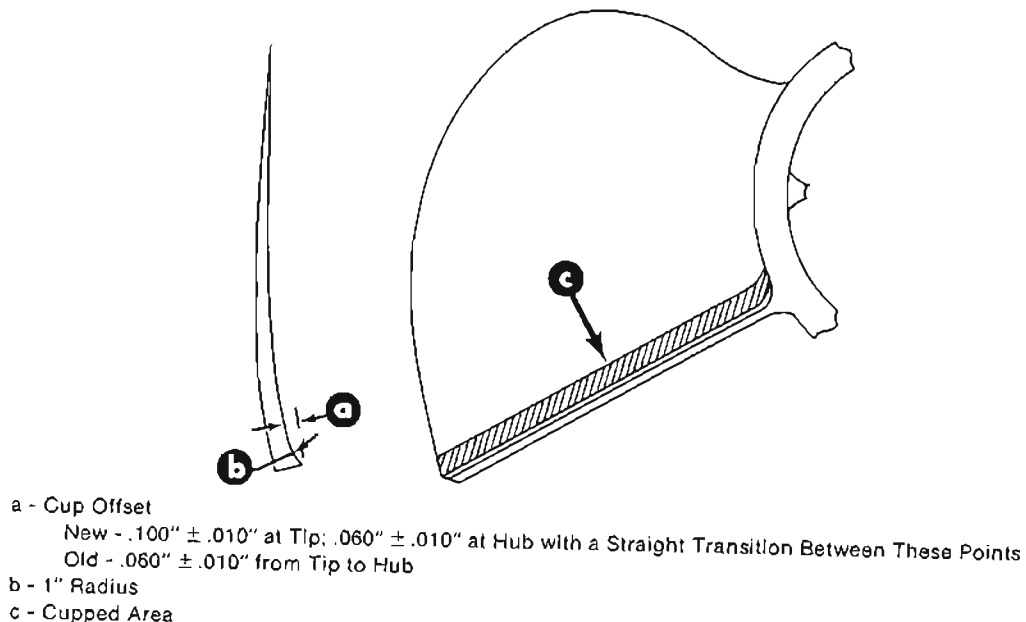
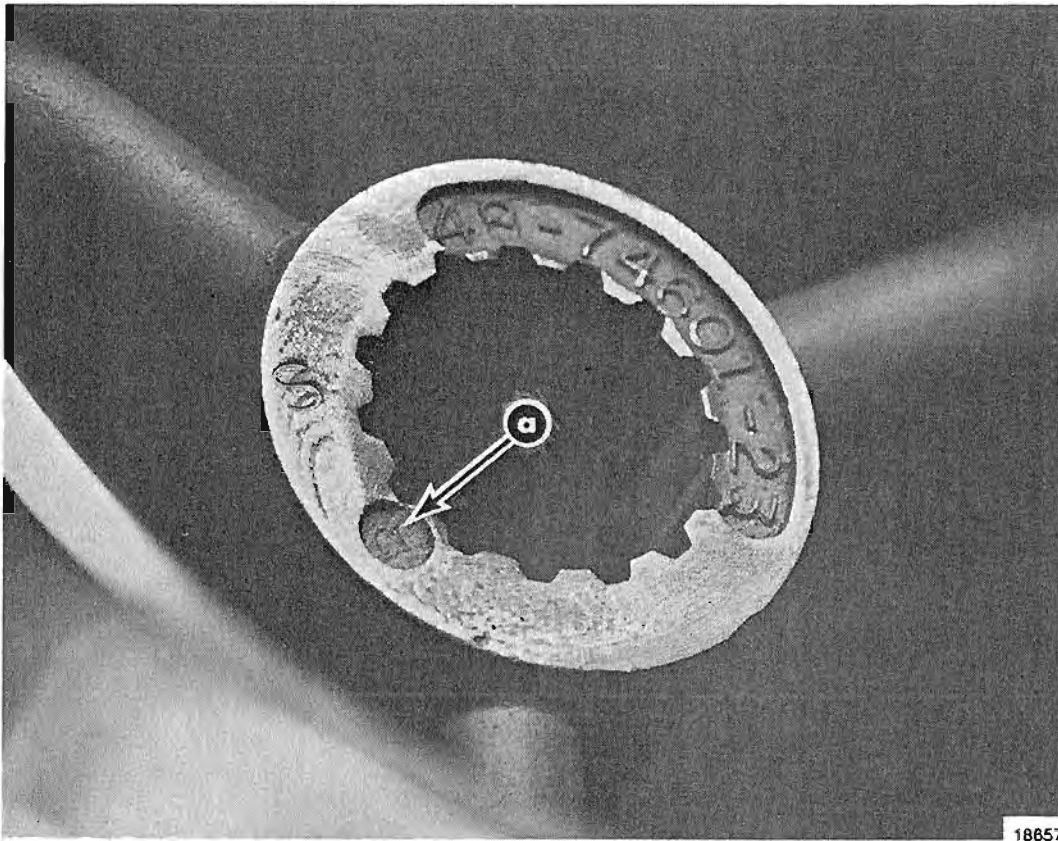


Figure 1. Blade Cross Section

Modification will occur as a running change **without a change to the part number**. Propellers with increased cup can be identified by observing the series letter. (Figure 2)



a - Series Letter
Solid Hub Cleaver - New "R"; Old "P"
Rubber Hub Cleaver - New "E"; Old "D"

Figure 2. Propeller Identification

The new propellers may show a moderate performance improvement and a small reduction in engine RPM when compared to their older counterparts. Performance improvement will be most evident on drives with horsepowers greater than 280. New and old propellers can be intermixed on dual installations.