

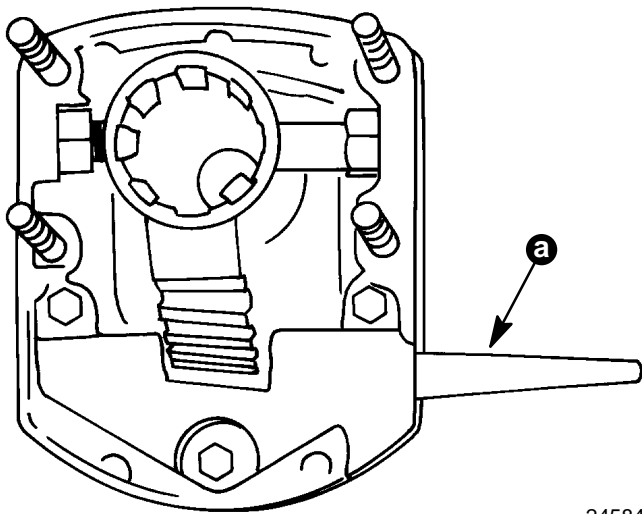
TO: SERVICE MANAGER  TECHNICIANS   
PARTS MANAGER

**No. 88-11**

## Tilt Steering Wheel Mount Lever Sticking in "Released" Position

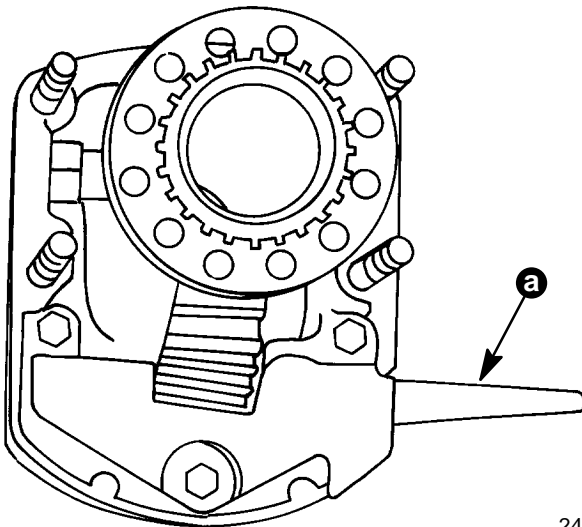
If the release lever sticks in the released (unlocked) position the following repair must be done.

### Rotary



24584

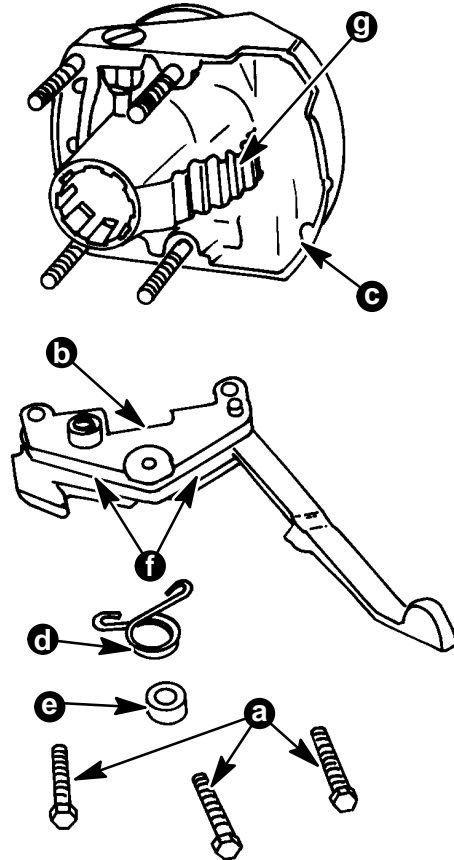
### Rack and Pinion



24584

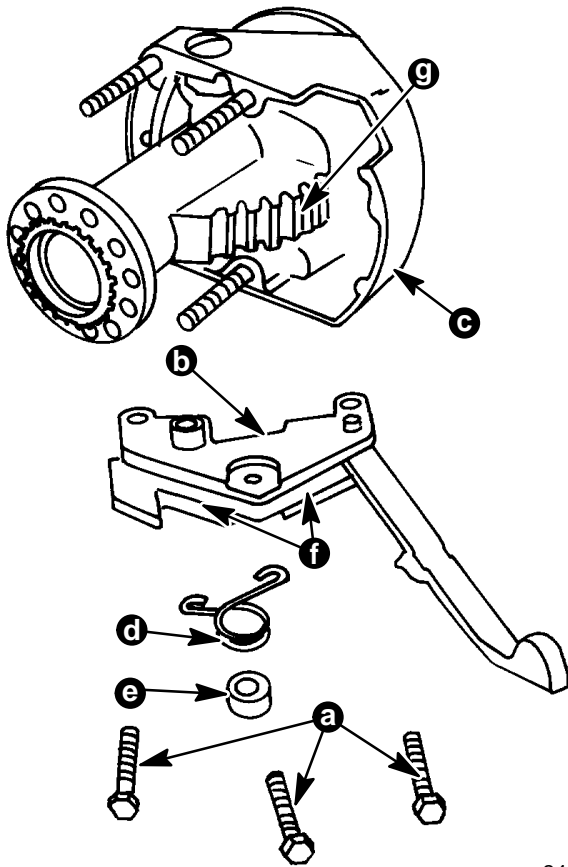
**Figure 1.**

1. Remove three 7/16" screws (a) shown in figures (2 and 3).
2. Lift lever assembly (b) from housing (c).



24583

**Figure 2.**



24582

Figure 3.

3. Remove spring (d) and spacer (e) from lever housing and pull the lever out of the housing as shown.
4. Lubricate area (f) liberally with Quicksilver 2-4-C Marine Lubricant.
5. Place lever back in housing at detent and install the spring and bushing.
6. Lubricate area (g) on the shaft gear rack shown in figures (2 or 3).
7. Install spring and bushing assembly into the lever housing and assemble to the tilt mount and retorque the screws to 70 lb. in. (8 N.m).