

TO: SERVICE MANAGER  TECHNICIANS   
PARTS MANAGER

No. 98-8

## NOTICE

Revised December 1998. Destroy October 1998 Bulletin Changes are underlined

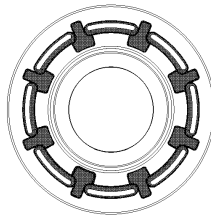
## New One Piece Oil Seal Carrier for Alpha One Generation II

### Models

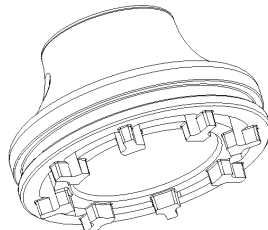
3.0L / 4.3L / 4.3LH / 4.3L EFI / 5.0L / 5.0L EFI / 5.7L / 5.7L EFI / 350 MAG MPI

### Situation

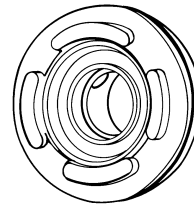
The Alpha One Generation II oil seal carrier under the seawater pump in the lower gear housing is being changed. The change will replace the present two piece housing with a new one piece housing. The one piece housing will supercede the present housing, and will back fit to the first Alpha One Generation II built.



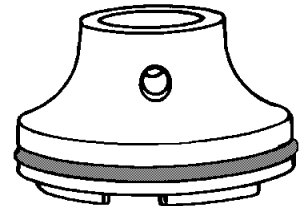
75972



75973



70501



75975

### 807929A1

**One piece style oil seal carrier assembly**

### 821759A4

**Two piece style oil seal carrier assembly**