

WARRANTY INFORMATION

SERVICE INFORMATION

EFI / MPI Fuel Pumps With Low Pressure

Models

Alpha Sterndrive Engines.

MCM 4.3L EFI: S/N 0L360469-0L360789.

MCM 5.0L EFI: S/N 0L359672-0L376549.

MCM 5.7L EFI: S/N 0L359121-0L375658.

MCM 350 Mag MPI: S/N 0L372105-0L376283.

Bravo Sterndrive Engines.

MCM 4.3L EFI: S/N 0L360474-0L360638.

MCM 5.0L EFI: S/N 0L359653-0L372286.

MCM 5.7L EFI: S/N 0L346472-0L375995.

MCM 350 Mag MPI: S/N 0L359066-0L376282.

MCM 7.4L MPI: S/N 0L362686-0L373270.

MCM 454 Mag MPI: S/N 0L352940-0L370234.

MCM 502 Mag MPI: S/N 0L352957-0L370246.

Ski Engines.

MIE 350 Mag MPI: S/N 0L305670-0L305774.

MIE Black Scorpion: S/N 0L305536-0L305577.

Inboard Engines.

MIE 350 Mag MPI: S/N 0L303829-0L303890.

MIE 350 Mag MPI Horizon: S/N 0L305377-0L305813.

MIE 7.4L MPI: S/N 0L303950-0L304264.

MIE 454 Mag MPI Horizon: S/N 0L303787-0L304120.

MIE 8.2L MPI: S/N 0L303516-0L303517.

Situation

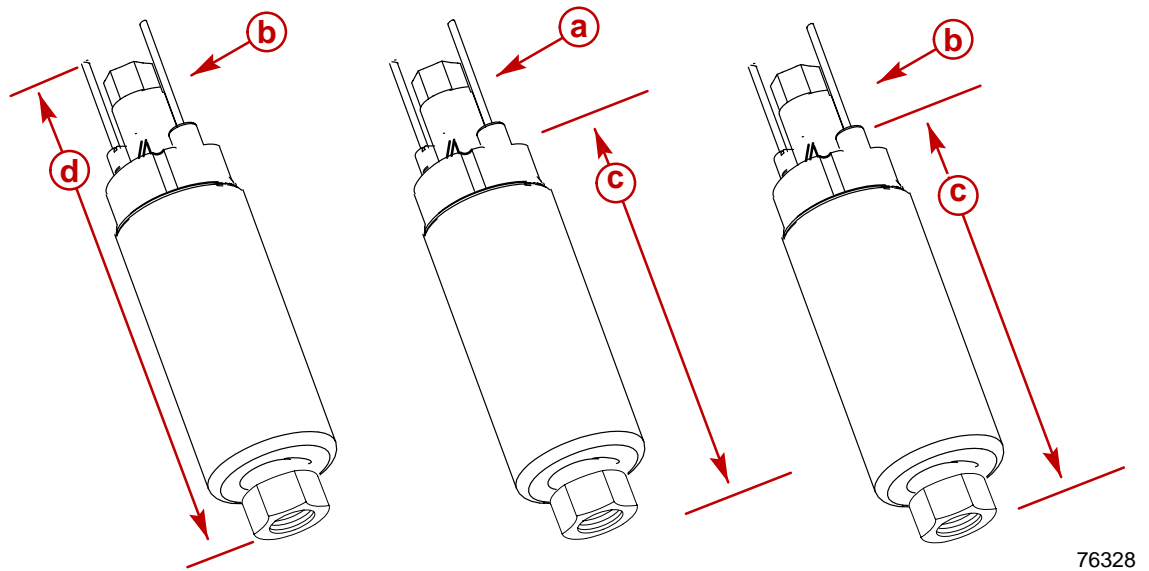
Engines within the serial number ranges listed may be equipped with an electric fuel pump that is painted black with a brass outlet. Under certain conditions, the check valve in the brass outlet of this pump may 'cock'. This will cause low pump pressure above 4000 rpm and a loss of engine performance.

NOTE: Painted pumps with an aluminum outlet or unpainted pumps with the brass outlet have a different style check valve and spring that will not 'cock'. Refer to the drawing.

Inspection

If one of the engines listed has a loss of power above 4000 rpm, use a fuel pressure gauge to measure the fuel pump pressure. Any reading below 22 psi (152 kPa) at 4000 rpm and above would indicate this check valve problem. Also, a 0 reading on the pressure gauge shortly after shutting the engine off is another indication.

Remove cover from the cool fuel assembly to see if the fuel pump is one that may have the check valve problem.



76328

Good

Good

Suspect

- a** - Aluminum Outlet
- b** - Brass Outlet
- c** - Area of Pump Painted Black
- d** - Unpainted Pump With Brass Outlet

Correction

Replace fuel pump with new one and retest pump pressure.

Part Required

(1) 861156A 1 Fuel Pump Assembly.

Warranty

Fill out warranty claim and send it to your normal warranty processing center.

NOTE: The replacement of part (s) and labor under warranty, to the products outlined in this service bulletin, will expire December 31, 2000.

Warranty Code and Labor:	MJ32	2.0 Hours
Diagnosis/Test:	MJ40	1.0 Hours

Old Part: USA and Canada: Return with warranty claim.

All Others: Retain for disposition by a Marine Power representative.