



# Service Bulletin

Bulletin No. 2005-71

OEM No. 2005-71

CMD 2005-11

Circulate to:  Sales Manager  Accounting  Service Manager  Technician  Parts Manager

## Engine Installation Improvements

### Models Affected

Model	Serial Number Range
1.7 WO / PS	88130150 and Above
1.7 W / PS	88142000 and Above
1.7L IB	88121100 and Above
2.8L 170	88005200 through 88010000
2.8L 200	88010500 through 88020000
4.2L 200	88020200 through 88030000
4.2L 230	88030400 through 88040000
4.2L 250	88040600 through 88050000
4.2L 300	88050800 through 88060000
4.2L 270	88060001 through 88070000
4.2L 320	88070001 through 88080000

### Situation:

1. Quick-connect fittings and new electrical connectors have been added to the transom assemblies to improve engine installation.
2. The rear engine mounts have been changed to improve engine alignment.

THE INFORMATION IN THIS DOCUMENT IS CONFIDENTIAL AND PROTECTED BY COPYRIGHT AND IS THE PROPERTY OF MERCURY MARINE.

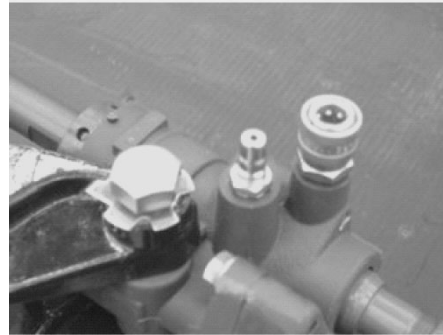
This document is provided for the sole and exclusive use of the original recipient as prescribed by Mercury Marine and may not be distributed or copied, digitally or otherwise, without the prior written consent of Mercury Marine.

## Improved Connections

**Power steering** – Hydraulic quick-connect fittings will be installed on the steering cylinder and hoses to reduce installation time. Benefits include eliminating cross threading on the power steering cylinder, reducing installation time, and ensuring correct connections through the use of alternate male and female connectors. If a customer does not want to use the quick connect feature, the fittings can be removed to allow the use of the threaded connection.

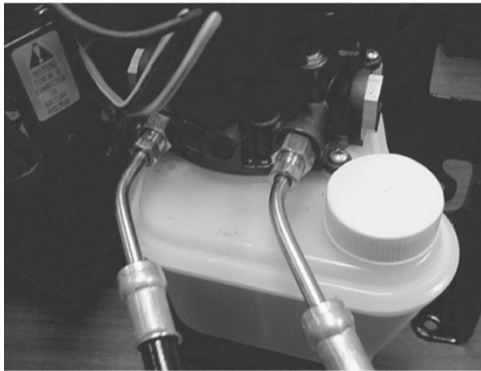


18457



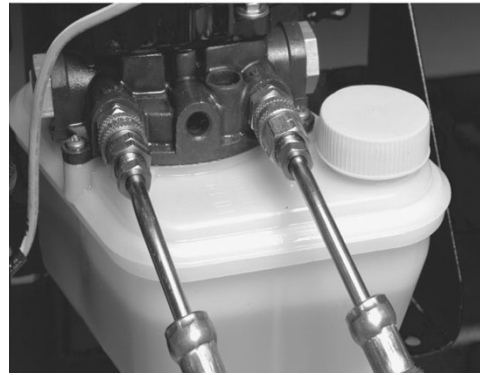
18458

**Trim pump hoses** – Redesigned trim pump hoses will include hydraulic quick-connect fittings. Benefits include male and female connections to ensure correct connections and single hand installation. This change will occur on Alpha and Bravo drives.



18459

Old style threaded fittings



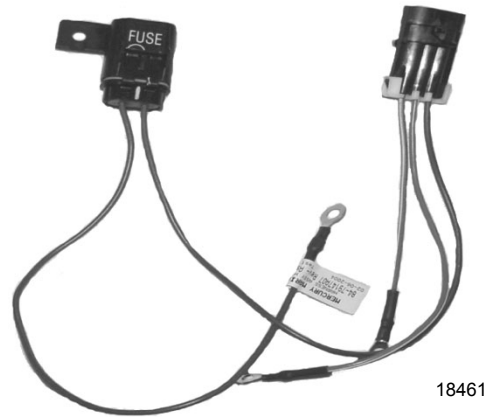
18460

New style quick connect fittings

THE INFORMATION IN THIS DOCUMENT IS CONFIDENTIAL AND PROTECTED BY COPYRIGHT AND IS THE PROPERTY OF MERCURY MARINE.

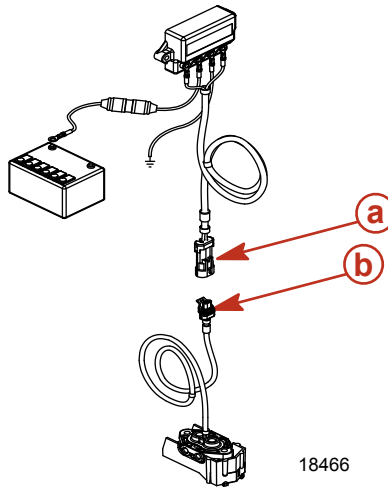
This document is provided for the sole and exclusive use of the original recipient as prescribed by Mercury Marine and may not be distributed or copied, digitally or otherwise, without the prior written consent of Mercury Marine.

**Trim pump electrical connections** – The trim pump will have a 3 pin Packard connector for the trim fuse assembly. This connector is a common Packard connector, is water resistant, and reduces installation time.



**NOTE:** Adapter 84-865771A02 is available to attach a boat harness with the old style round spade connector to the new Packard connector on the trim pump.  
 Adapter 84-86577A02 is available to attach the Packard connector boat harness to an old style trim pump with the round spade connector.

**MerCathode connections** –The MerCathode controller orange and brown wires will have a 2 pin Packard connector. The controller will have the ground and power wires attached and protected against corrosion.



**a** - Packard connector

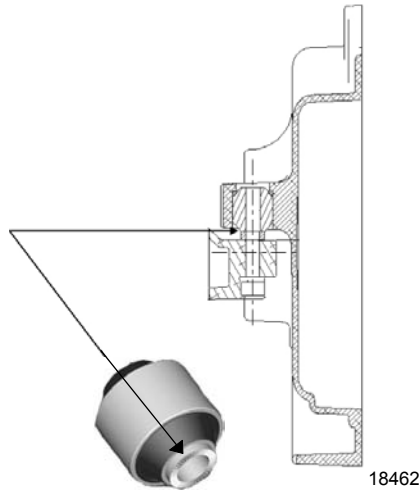
**b** - Seals

THE INFORMATION IN THIS DOCUMENT IS CONFIDENTIAL AND PROTECTED BY COPYRIGHT AND IS THE PROPERTY OF MERCURY MARINE.

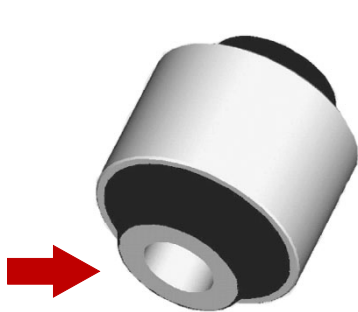
This document is provided for the sole and exclusive use of the original recipient as prescribed by Mercury Marine and may not be distributed or copied, digitally or otherwise, without the prior written consent of Mercury Marine.

## Improved Engine Alignment

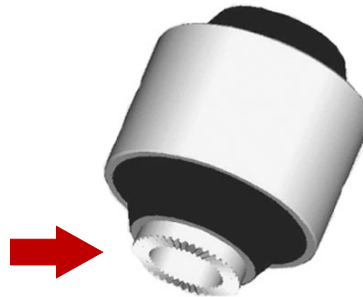
To improve engine and drive alignment, the rear of the engine has been lowered. The flywheel housing and rear mounts on all gasoline and diesel models have been redesigned to provide a dimension of 11.6 mm (0.456 in.) from the bottom of the mounts to the crankshaft centerline. The double-wound lock washer has been eliminated. This dimension provides a more optimum alignment. By lowering the rear of the engine by 7.1 mm (0.281 in.), the front mounts will lower by about 12.7 – 22.9 mm (0.5 – 0.9 in.) depending upon the transom angle and engine length.



Rear mount and flywheel cover



Old style mount, smooth face



New style mount, knurled face

**NOTE:** In some boats, engine alignment may not be possible due to the location of the front mounting pads. If engine alignment can not be achieved due to limited down travel on the front engine mounts, spacer kit 12-892619A01 can be installed between the transom plate and the new knurled face mount. This will bring the rear of the engine up, allowing for alignment.

THE INFORMATION IN THIS DOCUMENT IS CONFIDENTIAL AND PROTECTED BY COPYRIGHT AND IS THE PROPERTY OF MERCURY MARINE.

This document is provided for the sole and exclusive use of the original recipient as prescribed by Mercury Marine and may not be distributed or copied, digitally or otherwise, without the prior written consent of Mercury Marine.