

Circulate to:     Sales Manager     Accounting     Service Manager     Technician     Parts Manager

## Trim Cylinder End Cap and Anode Installation

**NOTICE**

Revised April 2016. This bulletin supersedes the previous bulletin number 2016-02 March 2015.

### Models Affected

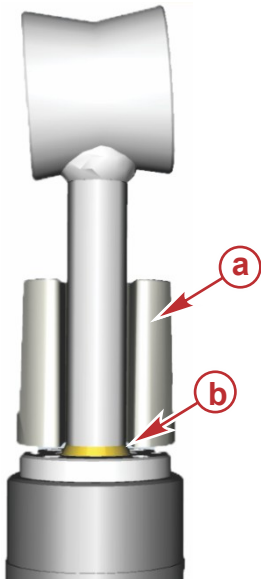
Models Covered	Serial Number Or Year
Alpha Gen II	All
Bravo One, Bravo Two, Bravo Three	All

### Scope

Worldwide

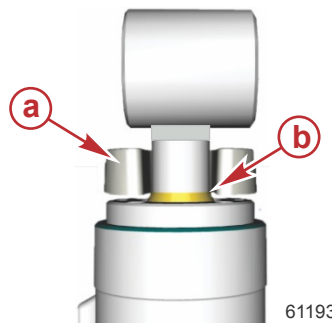
### Situation

Interference between the anode mounting face and the end cap rod scraper may occur when installing anodes on end caps included in trim cylinder end cap kits 8M0110717 and 8M0115362.



**Bravo cylinder**

- a** - Anode
- b** - Interference area



**Alpha cylinder**

61193

THE INFORMATION IN THIS DOCUMENT IS CONFIDENTIAL AND PROTECTED BY COPYRIGHT AND IS THE PROPERTY OF MERCURY MARINE.

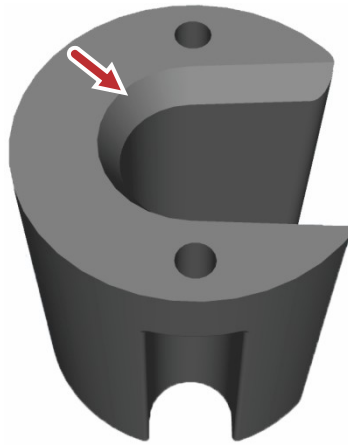
This document is provided for the sole and exclusive use of the original recipient as prescribed by Mercury Marine and may not be distributed or copied, digitally or otherwise, without the prior written consent of Mercury Marine.

## Correction

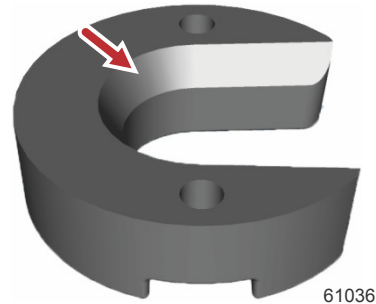
Inspect the anode mounting face before installation. If the anode has a chamfered edge then no further action is necessary.

The anode modification described in this bulletin only applies to Alpha or Bravo anodes that do not have a chamfered edge when used with end caps included in end cap kits 8M0110717 and 8M0115362.

Create a 0.13" x 45° tapered chamfer on the edge of the inside diameter of the trim cylinder anode mounting face to prevent interference when installing end caps included in end cap kits 8M0110717 and 8M0115362.

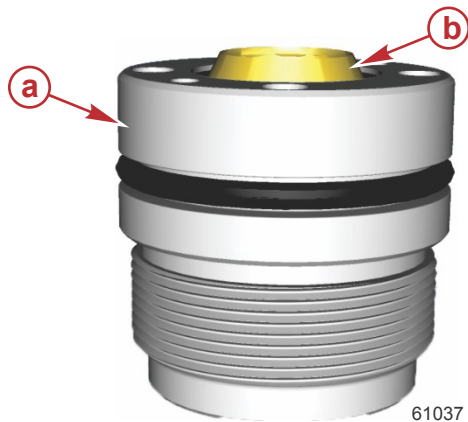


Bravo anode with chamfer



Alpha anode with chamfer

**NOTE:** End caps with protruding rod scrapers were also used during factory production on Bravo SeaCore transom assemblies starting with serial number 2A480244, and standard Bravo transom assemblies starting with serial number 2A485656. Perform the chamfering procedure described in this bulletin when replacing trim cylinder anodes on these units if the end cap has a protruding rod scraper.



- a - End cap
- b - Protruding rod scraper

## Warranty

**United States and Canada:** Mercury Marine will credit the dealer for the cost of the labor. Submit a warranty claim through your normal warranty-processing channel, listing:

- Engine serial number
- Labor: 0.20 hour
- Flat rate code: SB02
- Part code: 105
- Fail code: 00

Please contact Technical Service at (920) 929-5884 for a preauthorized claim if the engine is out of warranty.

THE INFORMATION IN THIS DOCUMENT IS CONFIDENTIAL AND PROTECTED BY COPYRIGHT AND IS THE PROPERTY OF MERCURY MARINE.

This document is provided for the sole and exclusive use of the original recipient as prescribed by Mercury Marine and may not be distributed or copied, digitally or otherwise, without the prior written consent of Mercury Marine.