

Circulate to: Sales Manager Accounting Service Manager Technician Parts Manager

Official Recall Notification Under the U.S. Environmental Protection Agency–Fuel Line

Models Affected

Models	Serial Numbers
3.0L TKS	1A343284–1A603107

Situation

Mercury Marine has determined that some fuel lines installed on 3.0L TKS engines within the affected serial number range may be emitting pollutants in excess of the U.S. federal emission standards as defined in Title 40 of the Code of Federal Regulations (CFR).

Owner Notification

A letter will be sent to every registered owner of an affected 3.0L TKS–powered boat. The letter will advise the owner to take the boat to any Mercury MerCruiser authorized dealer for replacement of a fuel line. Some affected power packages will have been updated before shipment. Visit MercNET or contact MerCruiser Customer Service or your regional service center to determine whether repairs have already been completed on a given package. As a Mercury MerCruiser dealer, you should also contact affected customers to make them aware of this recall and to schedule an appointment for the repair. A copy of the customer letter is attached.

Correction

Replace the fuel line with the following kit. The replacement fuel line will reduce the amount of evaporative emissions entering the atmosphere.

Description	Part Number
Fuel Line Kit	8M0045357

Removing the Fuel Line

NOTE: These instructions are also included in the fuel line kit.

⚠ WARNING

Performing service or maintenance without first disconnecting the battery can cause product damage, personal injury, or death due to fire, explosion, electrical shock, or unexpected engine starting. Always disconnect the battery cables from the battery before maintaining, servicing, installing, or removing engine or drive components.

1. Disconnect the battery cables from the battery.
2. Remove the ventilation hose from flame arrestor.
3. Remove the flame arrestor.

IMPORTANT: Place a clean cloth over the carburetor air inlet to prevent dirt and foreign material from falling into the engine.

4. Turn the fuel supply off at the fuel tank.

THE INFORMATION IN THIS DOCUMENT IS CONFIDENTIAL AND PROTECTED BY COPYRIGHT AND IS THE PROPERTY OF MERCURY MARINE.

This document is provided for the sole and exclusive use of the original recipient as prescribed by Mercury Marine and may not be distributed or copied, digitally or otherwise, without the prior written consent of Mercury Marine.

⚠ WARNING

Fuel is flammable and explosive. Ensure that the key switch is off and the lanyard is positioned so that the engine cannot start. Do not smoke or allow sources of spark or open flame in the area while servicing. Keep the work area well ventilated and avoid prolonged exposure to vapors. Always check for leaks before attempting to start the engine, and wipe up any spilled fuel immediately.

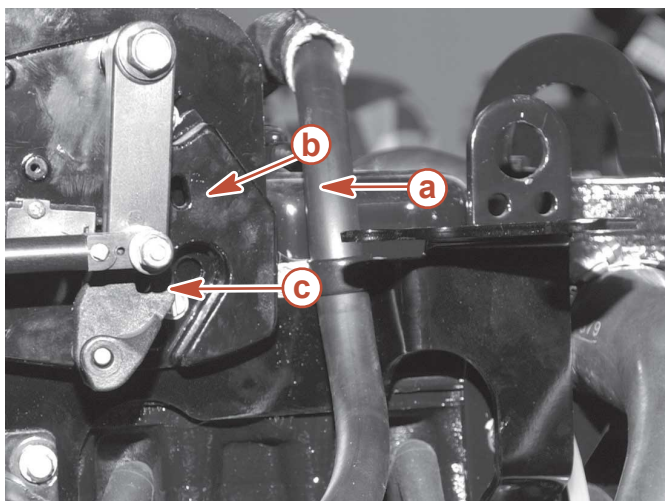
5. Remove the fuel line from the fuel inlet filter nut.
6. Remove and discard the fuel line clip and fastener.
7. Remove the fuel line from the fuel outlet fitting at the fuel pump.
8. Discard the old fuel line.

Installing the Flexible Fuel Line

1. Connect the flexible fuel line to the fuel pump outlet fitting and tighten by hand.
2. Connect the flexible fuel line fitting to the fuel inlet filter nut. Torque the flexible fuel line fitting.

Description	Nm	lb-in.	lb-ft
Flexible fuel line fitting to fuel inlet filter nut	34	–	25

3. Install the fuel line clip onto the flexible fuel line.
IMPORTANT: Ensure the flexible fuel line does not interfere with the moving components of the shift plate, and that the flexible fuel line does not make contact with the distributor cap.
4. Route the flexible fuel line so that it does not interfere with the moving components of the shift plate, and ensure that it does not make contact with the distributor cap or spark plug wires.

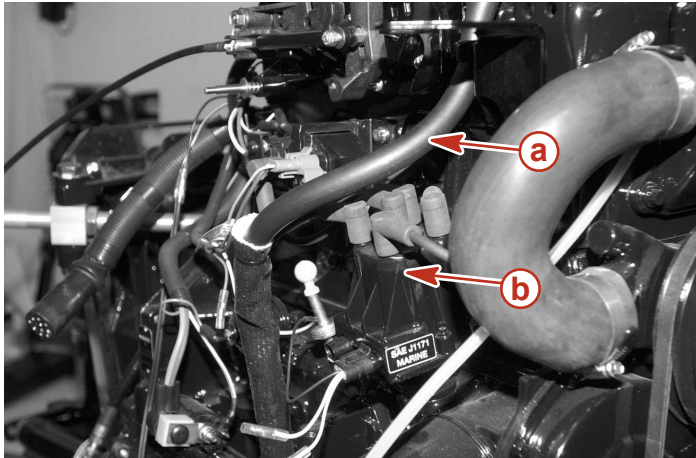


- a** - Flexible fuel line
- b** - Shift plate
- c** - Moving components

6507

THE INFORMATION IN THIS DOCUMENT IS CONFIDENTIAL AND PROTECTED BY COPYRIGHT AND IS THE PROPERTY OF MERCURY MARINE.

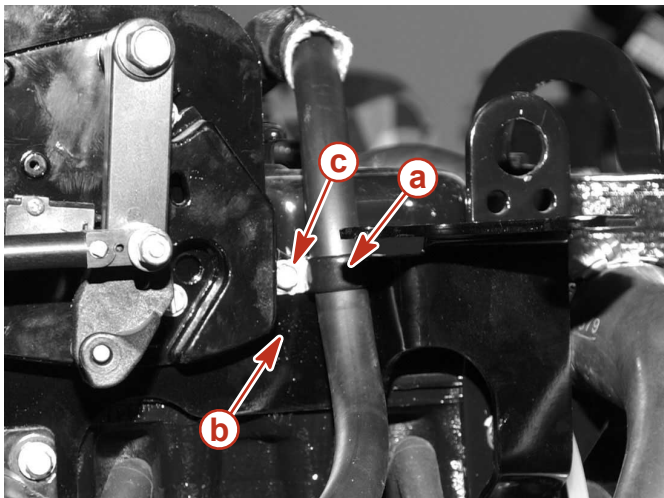
This document is provided for the sole and exclusive use of the original recipient as prescribed by Mercury Marine and may not be distributed or copied, digitally or otherwise, without the prior written consent of Mercury Marine.



- a - Flexible fuel line
- b - Distributor cap

6511

5. Position the fuel line clip onto the shift plate mounting bracket and secure the clip using the fastener provided.



- a - Fuel line clip
- b - Shift plate mounting bracket
- c - Fuel line clip fastener

6508

Description	Nm	lb-in.	lb-ft
Fuel line clip fastener	13	120	–

6. Torque the flexible fuel line fitting at the fuel pump outlet.

Description	Nm	lb-in.	lb-ft
Fuel line fitting at the fuel pump outlet	34	–	25

7. Install the flame arrestor.
8. Connect the ventilation hose to the flame arrestor.
9. Connect the battery cables.

NOTICE

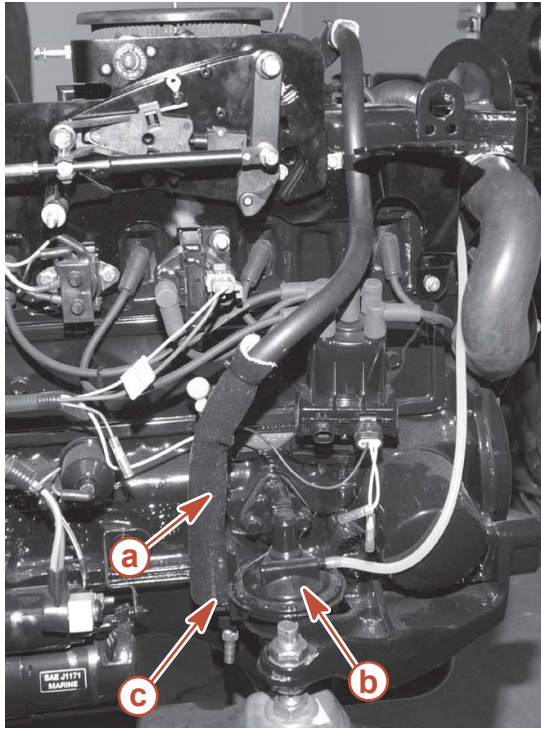
Without sufficient cooling water, the engine, the water pump, and other components will overheat and suffer damage. Provide a sufficient supply of water to the water inlets during operation.

10. Turn the fuel supply on at the tank.
11. Supply cooling water to the engine and drive unit.
12. Start the engine; check for fuel and water leaks. Stop the engine immediately if any leaks exist. Make necessary corrections.

THE INFORMATION IN THIS DOCUMENT IS CONFIDENTIAL AND PROTECTED BY COPYRIGHT AND IS THE PROPERTY OF MERCURY MARINE.

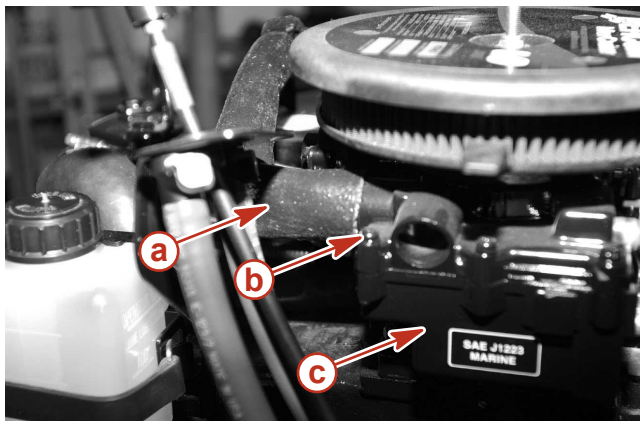
This document is provided for the sole and exclusive use of the original recipient as prescribed by Mercury Marine and may not be distributed or copied, digitally or otherwise, without the prior written consent of Mercury Marine.

13. Verify that no fuel leaks exist. Position the fuel line fire sleeve over the fuel line fittings at the fuel pump and at the carburetor.



6510

- a - Fuel line fire sleeve
- b - Fuel pump
- c - Location of fuel line fitting



6509

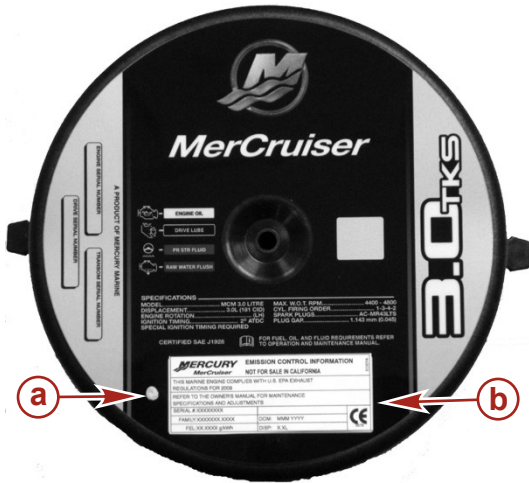
- a - Fuel line fire sleeve
- b - Location of fuel line fitting
- c - Carburetor

THE INFORMATION IN THIS DOCUMENT IS CONFIDENTIAL AND PROTECTED BY COPYRIGHT AND IS THE PROPERTY OF MERCURY MARINE.

This document is provided for the sole and exclusive use of the original recipient as prescribed by Mercury Marine and may not be distributed or copied, digitally or otherwise, without the prior written consent of Mercury Marine.

Rework Identification

The technician will apply a dot of white paint to the flame arrestor cover next to the ECI label to enable someone with the recall instructions to determine quickly whether an engine has been repaired.



- a - Dot of white paint
- b - ECI label

43538

Warranty

US and Canada: Mercury MerCruiser will credit the dealer for the cost of labor and parts. Submit a warranty claim through your normal warranty-processing channel, listing:

- MerCruiser engine serial number
- Flat Rate Code and Labor – MF15 .5 hours and SB05 .5 hours
- Part Code – 713
- Failure Code – 40

Old Part or Parts

- **USA and Canada:** Scrap.

THE INFORMATION IN THIS DOCUMENT IS CONFIDENTIAL AND PROTECTED BY COPYRIGHT AND IS THE PROPERTY OF MERCURY MARINE.

This document is provided for the sole and exclusive use of the original recipient as prescribed by Mercury Marine and may not be distributed or copied, digitally or otherwise, without the prior written consent of Mercury Marine.

Dear Mercury Marine Customer:

Thank you for your purchase of a new boat powered by a Mercury MerCruiser 3.0 TKS engine package. We appreciate your business and hope you are enjoying your new boat.

SUBJECT: Fuel Line Replacement

Our records indicate that you are the owner of a Mercury MerCruiser product included in a recall. The U.S. Environmental Protection Agency has determined that your engine or boat may be emitting pollutants in excess of the federal emission standards as defined in Title 40 of the Code of Federal Regulations. These emission standards were established to protect the public health or welfare from air pollution. It is necessary to have the fuel line replaced; the replacement fuel line will reduce the amount of evaporative emissions entering the atmosphere.

To ensure your full protection under the emission warranty on your engine by federal law, and to ensure your right to participate in future recalls, we recommend you have your engine serviced as soon as possible. Engines that do not get repaired have a fuel line that is not compliant with federal regulations. Your failure to have this repair completed may be considered improper maintenance.

WHAT YOU SHOULD DO

Contact your authorized Mercury MerCruiser dealer and make arrangements for having this fuel line installed. The dealer will refer to Mercury MerCruiser Service Bulletin 2010-05 for instructions. You must deliver your boat to the dealer and present this letter to the dealer. If you are having difficulty obtaining repairs, please contact our Customer Contact Center at 405-743-6566 for assistance or use the dealer locator feature at www.MercuryMarine.com.

If you have sold the engine or boat please contact our Registration department at 1-877-637-2456 and select prompt 1 or e-mail us at registration_support@mercmarine.com to provide information on the new owner. Please refer to Service Bulletin 2010-05 with your information.

You may operate your engine until this repair has been completed.

WHAT WE WILL DO

We will reimburse the dealer for performing this recall in accordance with the instructions outlined in the service bulletin. There will be no cost to you to have this work performed.

We apologize for any inconvenience this recall may cause you; however, we have taken this action to ensure that your boating experience will be enjoyable and trouble-free.

Sincerely,

Mercury MerCruiser Service Department