

Circulate to: Sales Manager Accounting Service Manager Technician Parts Manager

Diagnostic Tool Update—CDS G3 Software Version 1.5

NOTICE

The information released in this service bulletin supersedes any previously released bulletins regarding the CDS G3 diagnostic tool.

Models Affected

Models Covered	Serial Number
MerCruiser Axis Systems	All
MerCruiser ECT Engines	All
30–60 HP FourStroke EFI Engines	1C104424 and Above
150 EFI FourStroke	All
Mercury Racing Sterndrive 520, 565, 1100, and 1350	All
Joystick Piloting for Outboard	All
Mercury Zeus Pod Systems	All

Scope

Worldwide

Situation

Mercury Marine is pleased to announce the release of a major update to the CDS G3 program. The software update to version 1.5 is available only on a compact disc. CDS G3 kit part number 8M0087444 has been updated to include software version 1.5.



54496

THE INFORMATION IN THIS DOCUMENT IS CONFIDENTIAL AND PROTECTED BY COPYRIGHT AND IS THE PROPERTY OF MERCURY MARINE.

This document is provided for the sole and exclusive use of the original recipient as prescribed by Mercury Marine and may not be distributed or copied, digitally or otherwise, without the prior written consent of Mercury Marine.

New Features Introduced in CDS G3 1.5.0

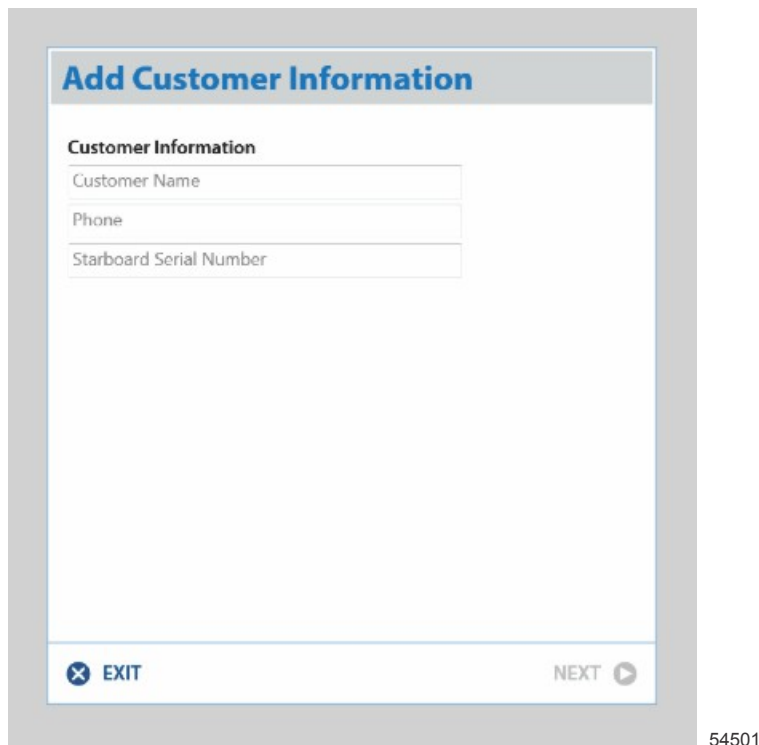
Printing

New in CDS G3 version 1.5 is the ability to print data from "Freeze Frame," "View Faults," and "Run History." This feature provides the ability to create a clean, professional document in printed form, or a PDF document. Each of these screens will have a gear icon in the upper right corner to access the "Print Page" feature. This icon will not be available from "View Faults" or "Freeze Frame" if faults or freeze frame data are not present.



Another new print feature is creating a full report. A full report will create a summary view, and includes "Freeze Frame," "View Faults," and "Run History," along with the ability to include your full dealership information and your customer's information. A full report can be created by selecting "File" then "Print Full Report," or pressing F12. Inside of the preview of a full report, a gear icon will be available to include or exclude dealer and customer information.

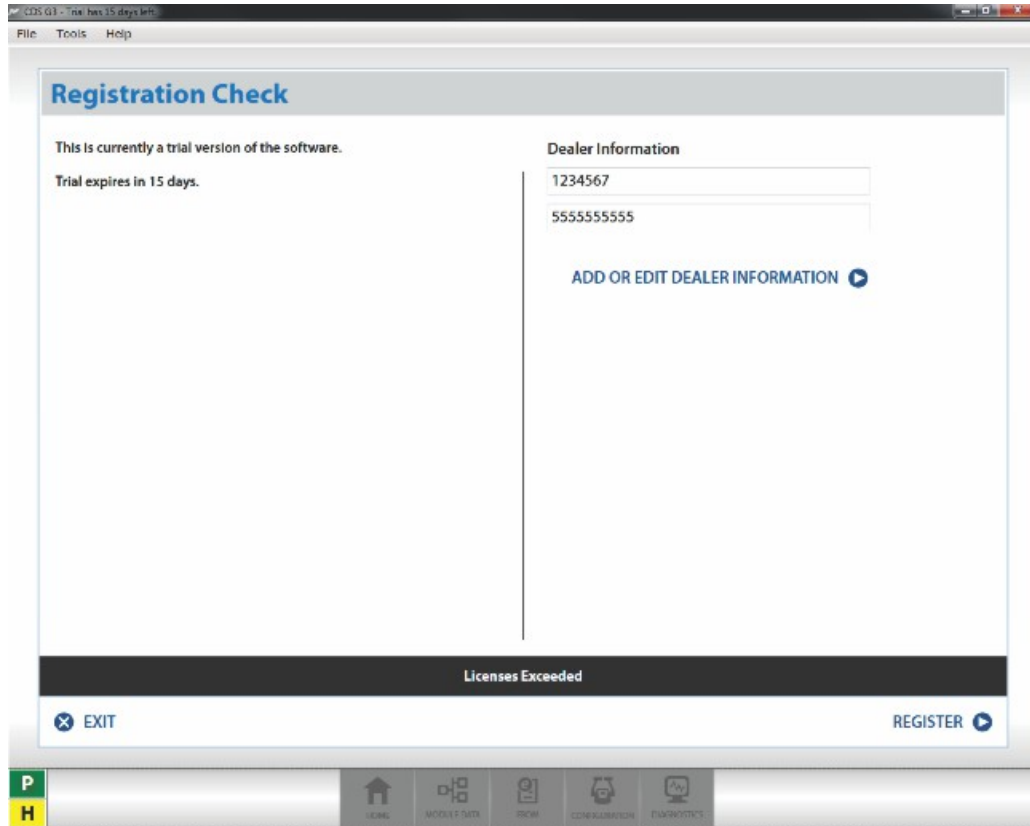
The customer's information can be added directly in this menu when "Add Customer Information" is selected. This information will be available until the CDS G3 program is closed; it will then be removed. You may change this information at any time without closing the software by selecting the gear icon, "Remove Customer Information," and again select the gear icon and "Add Customer Information." The "Add Customer Information" window will open and allow you to change the content.



THE INFORMATION IN THIS DOCUMENT IS CONFIDENTIAL AND PROTECTED BY COPYRIGHT AND IS THE PROPERTY OF MERCURY MARINE.

This document is provided for the sole and exclusive use of the original recipient as prescribed by Mercury Marine and may not be distributed or copied, digitally or otherwise, without the prior written consent of Mercury Marine.

Dealer information is entered by completing "Add or Edit Dealer Information" as part of "Registration." To enter or edit your dealer information, select "Tools" then "Registration." If it is entered, your dealer information will be displayed here. Your dealer information will remain in the program, unless it is manually removed through the "Add or Edit Dealer Information."



54498

With the inclusion of these new print features, the "Print Screen" button in the main tool bar has been removed. You can still use the old print screen function by either selecting "File" then "Print Screen," or pressing Ctrl+F12 to capture the current screen.

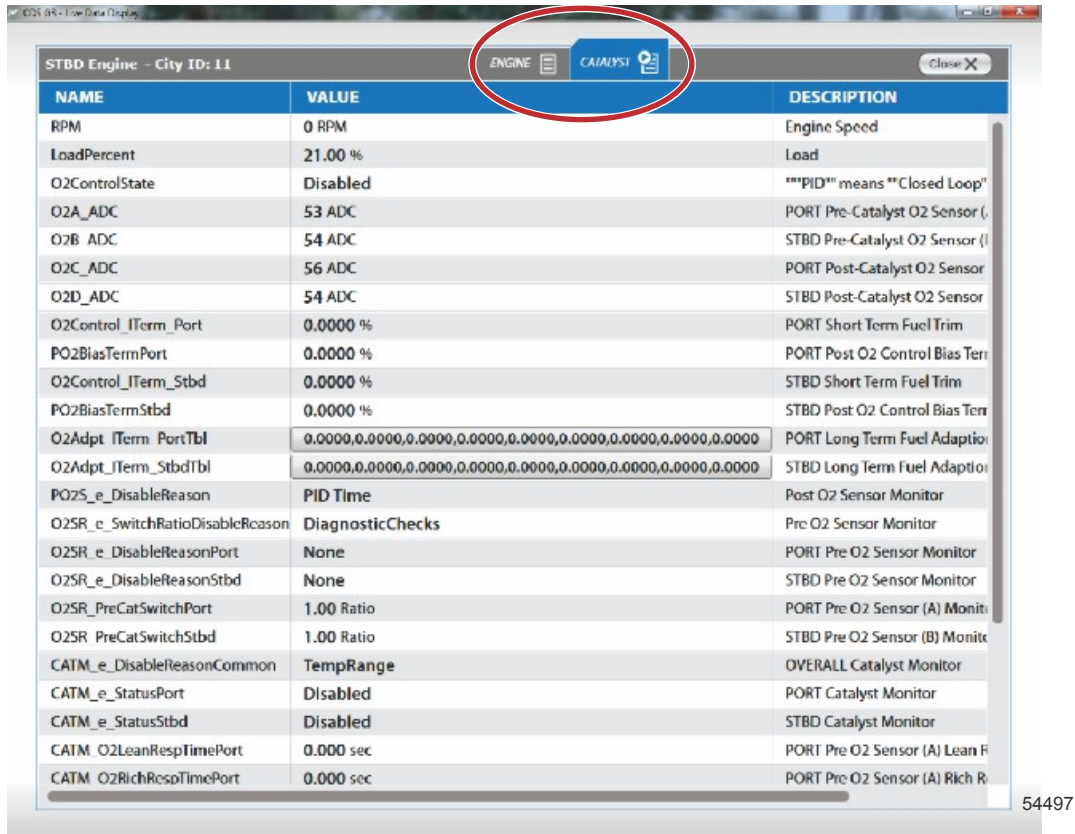
"Live Data"—Categories and Drag and Drop Sorting

The "Live Data" screen has undergone considerable changes intended to improve readability and ease of use. Along with improvements to the layout, all data items may be reordered by simply dragging and dropping the item in the desired location. This will allow you to focus on items of concern within the same view without having to scroll to view data items.

THE INFORMATION IN THIS DOCUMENT IS CONFIDENTIAL AND PROTECTED BY COPYRIGHT AND IS THE PROPERTY OF MERCURY MARINE.

This document is provided for the sole and exclusive use of the original recipient as prescribed by Mercury Marine and may not be distributed or copied, digitally or otherwise, without the prior written consent of Mercury Marine.

While working with some systems, the "Live Data" screen may now show two tabs. These tabs are categorized data list items. The example below displays the categories of "Engine" and "Catalyst." Data items specific to catalysts have been located in this category. When diagnosing a catalyst-related issue, selecting the "Catalyst" category will provide you with quick access to this data without having to filter through the full data list.



54497

New Module Support

Joystick Piloting for Outboard/Verado

Installation

Any installation disc for CDS G3 may be installed without a previous version of the software. Before proceeding with installation, complete all "High Priority Updates" as provided by Microsoft® through Windows® Update. If updating CDS G3 from version 1.0, uninstall the software prior to installation of a current version. If updating from CDS G3 version 1.1 or later, it is not required that you uninstall the previous version.

To install CDS G3, insert the installation disc into the disc drive of the computer. If the software installation does not start automatically, navigate to your optical drive and run "setup.exe." This will most commonly be "D:\setup.exe." During installation, the following programs will be installed:

- Microsoft ReportViewer 2010
- Microsoft Visual C++ 2010 SP1 Redistributable Package (x86)
- Microsoft .NET Framework 4.0 Client
- Windows Installer 4.5
- Kvaser 4.9 CAN Adapter Driver

These additional programs are required for CDS G3 to deliver a rich, interactive user experience.

Administrative rights—The user performing the CDS G3 program installation must have administrative rights. If the computer has a MCDS user account, that user account was given administrative rights when it was created by an earlier CDS installation.

NOTE: Some information technology (IT) departments may restrict user rights for these accounts. If this has occurred, either the IT department must perform the installation, or they must grant administrative rights to the user accounts performing the installation.

THE INFORMATION IN THIS DOCUMENT IS CONFIDENTIAL AND PROTECTED BY COPYRIGHT AND IS THE PROPERTY OF MERCURY MARINE.

This document is provided for the sole and exclusive use of the original recipient as prescribed by Mercury Marine and may not be distributed or copied, digitally or otherwise, without the prior written consent of Mercury Marine.

Computer Requirements

Minimum specifications are established to support both CDS and CDS G3.

PC Minimum Hardware Specifications

- 1.2 GHz Pentium® Processor
- 2 GB RAM
- 120 GB hard drive
- 802.11 b/g/n wireless or 10/100 Ethernet
- DVD ROM optical drive
- USB 2.0 port (qty. 3) to accommodate CDS USB components**
- Optional 9-pin serial port***

** A single USB port plus a USB port hub may be used.

*** The serial port is no longer required, but is still preferred. The use for a serial port is for CDS only.

Operating System Requirements

Windows 7 Professional or Windows 8 Professional

Parts Required

Qty.	Description	Part Number
1	CDS G3 Version 1.5 (software only)	8M0087443

To order the update from Mercury Parts and Accessories, use part number 8M0087443. Each update disc includes a software license for one computer. Internet communication is required to register the software.

To purchase a complete CDS G3 Diagnostic Tool Kit with the SmartCraft diagnostic interface and adapter cables, order part number 8M0087444. This kit includes software version 1.5 disc.

THE INFORMATION IN THIS DOCUMENT IS CONFIDENTIAL AND PROTECTED BY COPYRIGHT AND IS THE PROPERTY OF MERCURY MARINE.

This document is provided for the sole and exclusive use of the original recipient as prescribed by Mercury Marine and may not be distributed or copied, digitally or otherwise, without the prior written consent of Mercury Marine.