

## TPI LOOSENING DURING ENGINE OPERATION

### MODELS AFFECTED

All Mercury Hi-Performance 300 Pro Max/Super Magnum engines.

**IMPORTANT:** If the engine has a yellow dot on the top surface of the TPI the correction has already been performed. If the engine has a white dot on the top surface of the TPI, perform the following procedure indicating that the plastic coupler needs to be glued to the throttle shaft.

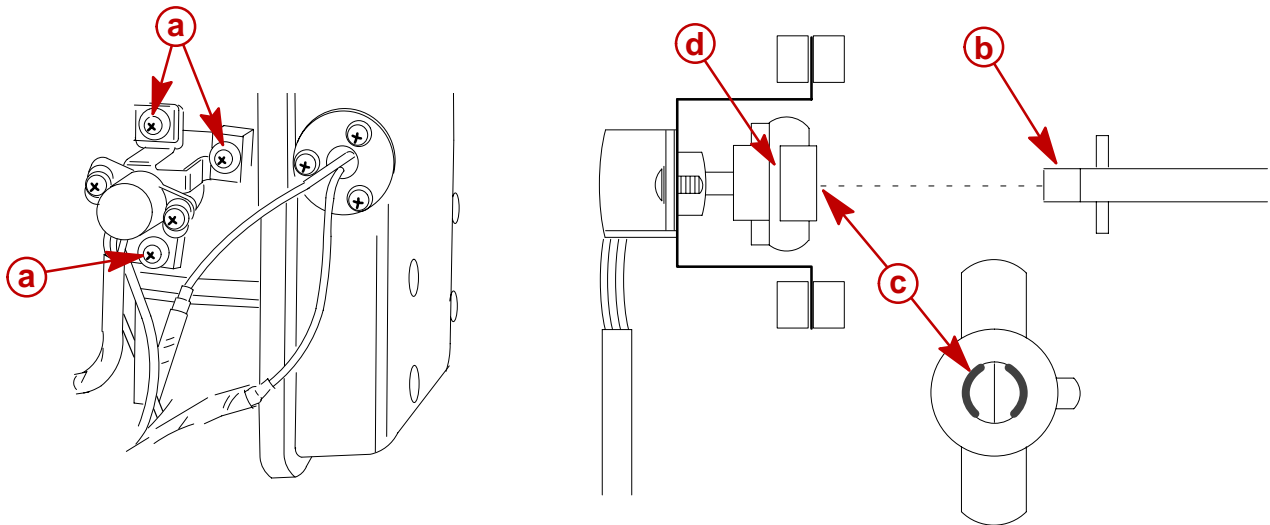
### PROBLEM

TPI setting may change during operation causing a rich or lean condition to occur.

### RECOMMENDATION

1. Remove TPI assembly from fuel management system secured by (3) screws (a).
2. Clean throttle shaft (b) and inside of coupler (c) with a commercial cleaning solvent.
3. Apply Loctite #404 quickset to inside of coupler (c).
4. Slide coupler (c) over throttle shaft (b) and wipe off any excess Loctite.

**IMPORTANT:** When inserting coupler onto throttle shaft make sure the center portion of the coupler (d) does not glue together.



**NOTE:** For proper TPI setting refer to service manual 90-849372 section 2C.

**IMPORTANT:** Once the TPI has been repaired place a yellow dot on the top surface of the TPI.