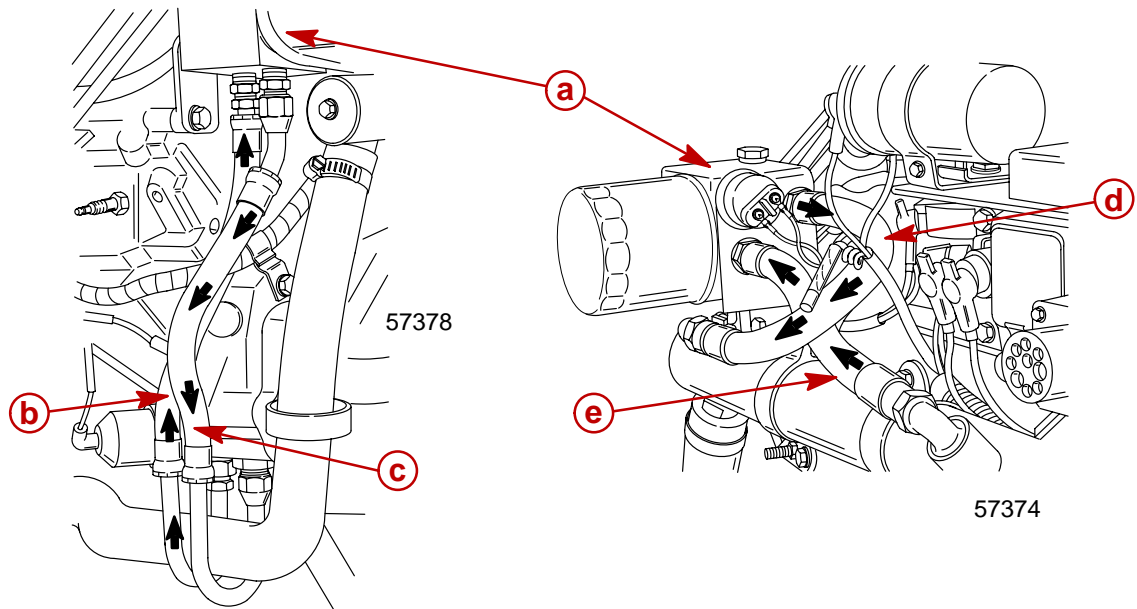


## Oil Line Routing on Hi-Performance MerCruiser Engines with Remote Oil Filter & Oil Thermostat

**Models Affected: Engines With Oil Thermostat or Thermostat Kit HP 425, HP 465, HP 500, HP 500 Bulldog, 500 EFI, HP 525 SC, HP 600 SC and HP 800 SC**

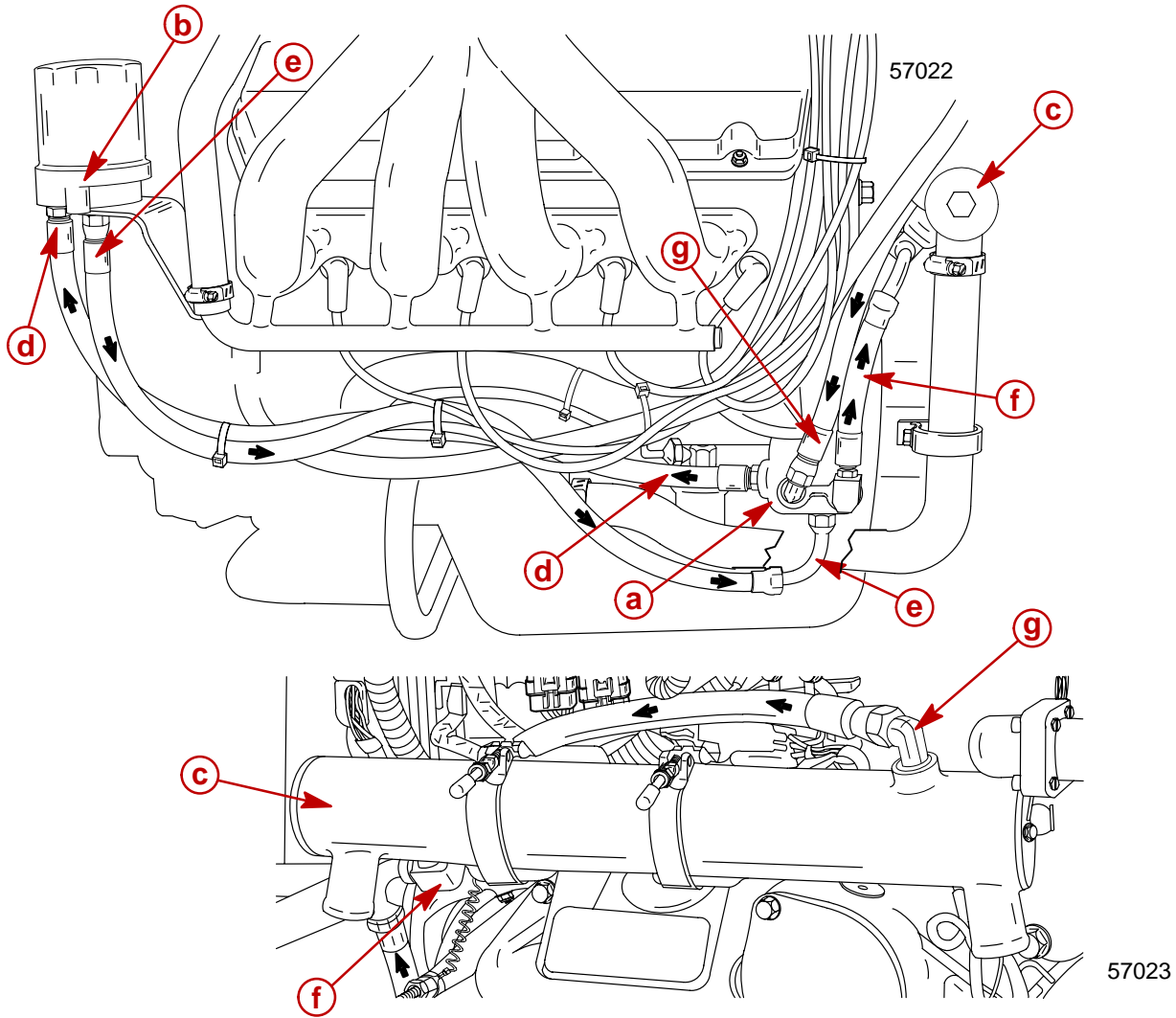
Oil line routing on MerCruiser Hi-Performance engines with remote oil filter and oil thermostat is important for proper thermostat function. Install oil lines in accordance with the following illustrations.

**All Hi-Performance MerCruiser Engines Except 500 EFI (See page 2 for 500 EFI oil line routing)**



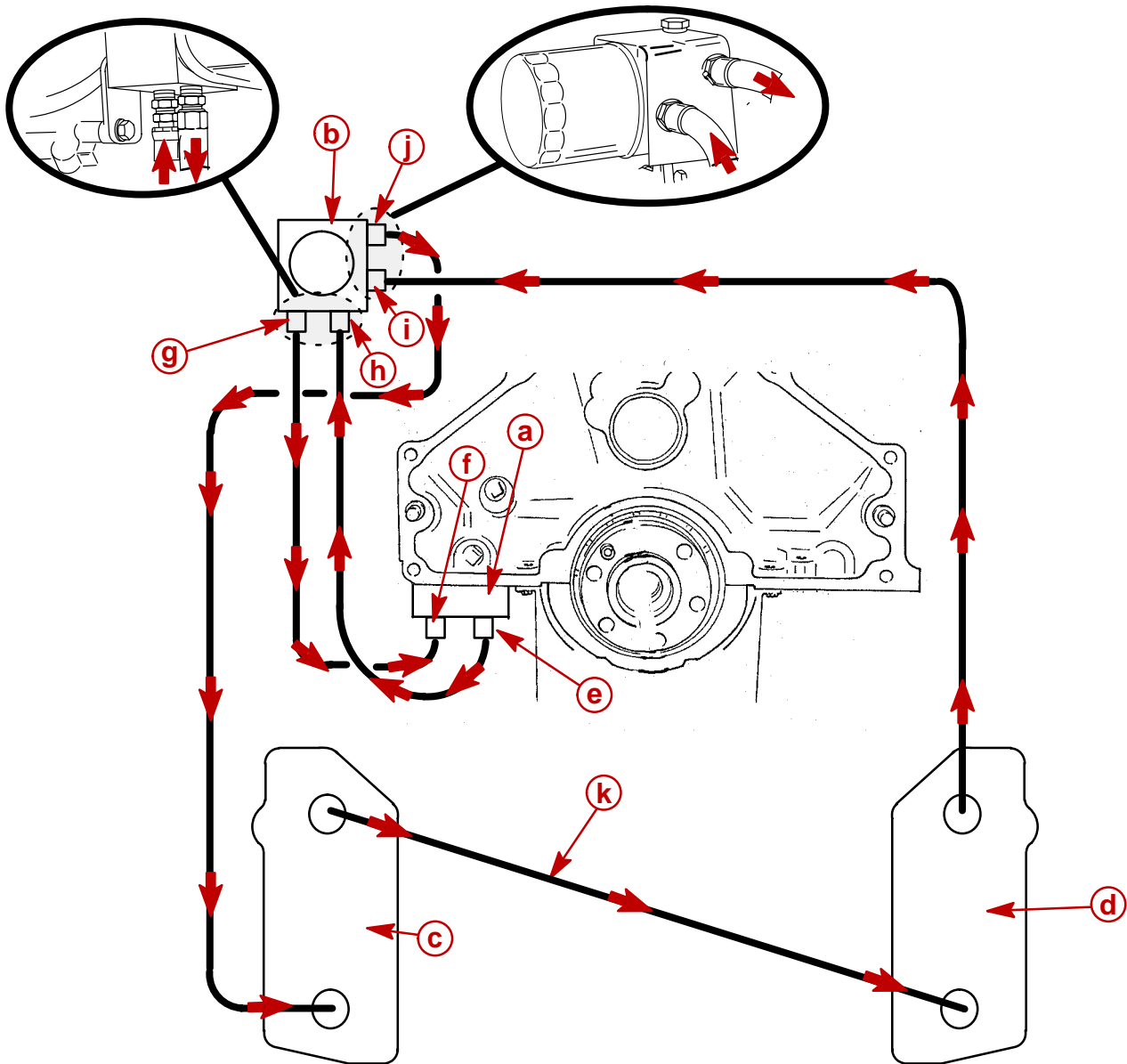
- a** - Remote Oil Filter & Thermostat Housing
- b** - Oil Out of Engine and Into the Thermostat Housing
- c** - Oil Out of Thermostat Housing and Returning to Engine
- d** - Oil Out of Thermostat Housing and Into Oil Cooler
- e** - Oil Out of Cooler and Into Thermostat Housing

500 EFI



- a** - Engine Block Adaptor with Oil Thermostat
- b** - Remote Oil Filter
- c** - Engine Oil Cooler
- d** - Oil Out of Block Adaptor to Remote Filter
- e** - Oil from Remote Filter to Engine Block Adaptor
- f** - Oil Out of Block Adaptor to Engine Oil Cooler
- g** - Oil from Oil Cooler to Engine Block Adaptor

## 900 SC



- a** - Engine Oil Adapter Housing
- b** - Remote Oil Filter & Thermostat Housing
- c** - Left Hand Oil Cooler
- d** - Right Hand Oil Cooler
- e** - Oil Out of Engine (Fitting Closest to Oil Pan)
- f** - Oil Returning to Engine from Thermostat Housing
- g** - Fitting on Bottom of Thermostat Housing Closest to Oil Filter
- h** - Fitting on Bottom of Thermostat Housing Closest to Engine Block
- i** - Oil Into Thermostat Housing from RH Oil Cooler (Bottom Fitting Closest to Filter)
- j** - Oil Out of Thermostat Housing to LH Cooler (Top Fitting Closest to Engine Block)
- k** - Oil Out of LH Cooler to RH Oil Cooler