

WARRANTY INFORMATION SERVICE INFORMATION

Cannon Plug Relocation on MerCruiser Engines

Problem:

On installations where the tailpipe is altered from the standard production configuration, (i.e. the use of Silent Choice and or thru drive exhaust), the cannon plug or wiring harness may come into contact with the exhaust pipe.

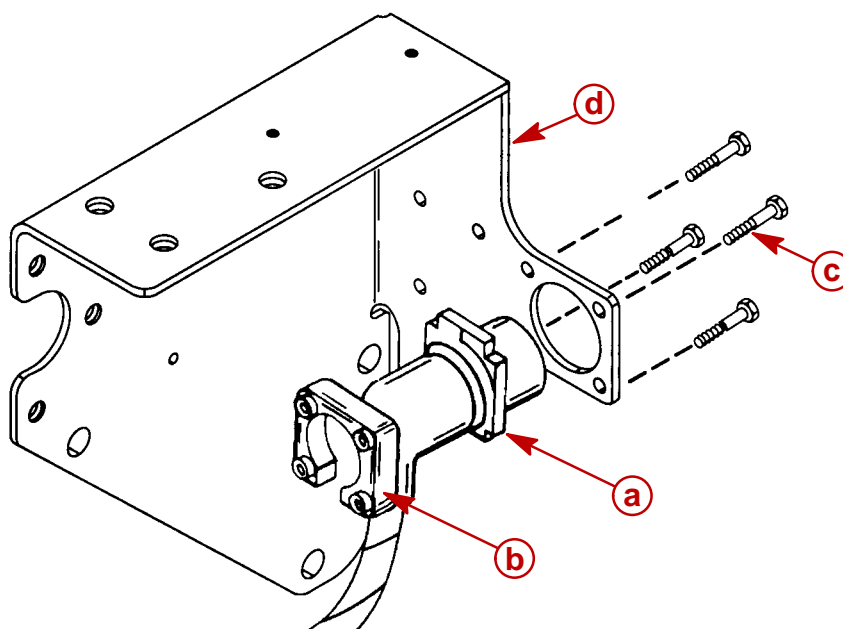
Solution:

A bracket and attaching bolts to relocate and redirect the cannon plug toward the rear of the engine instead of below the exhaust tailpipe are available thru Quicksilver Parts.

- 90° Mounting Bracket P/N 848191-1
- Attaching Screws P/N 10-88829

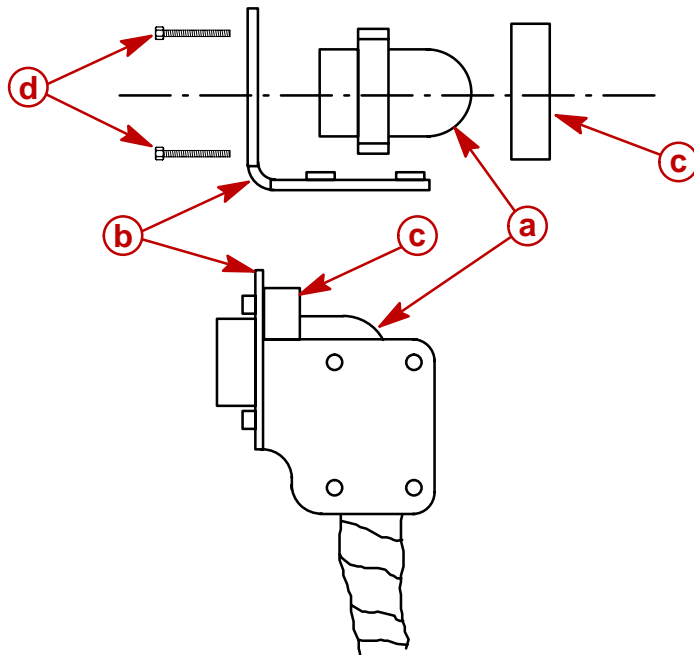
Removal / Installation

1. Remove and retain the four attaching screws and clamp which secure the cannon plug to the engine mount bracket.



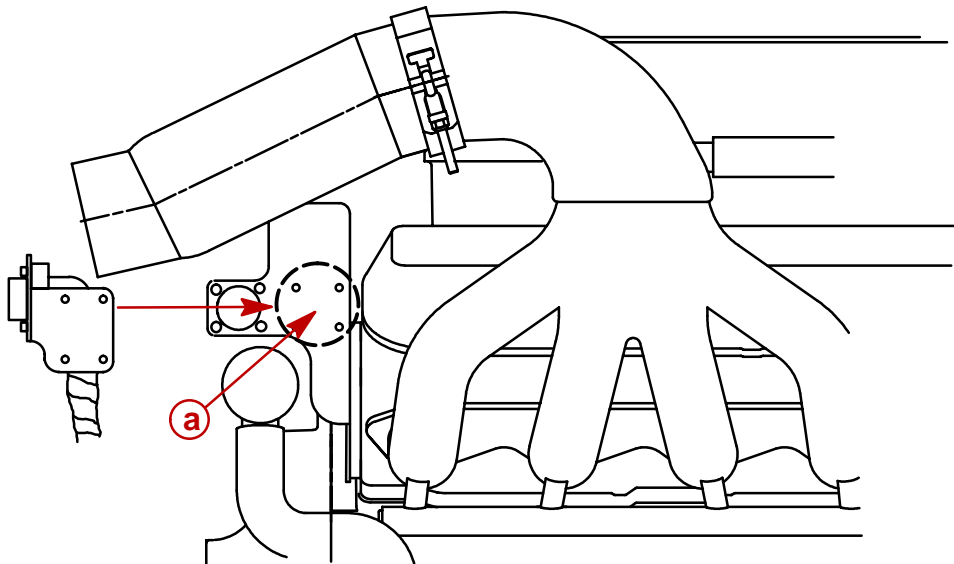
- a** - Cannon Plug
- b** - Clamp
- c** - Attaching Screws
- d** - Engine Mount Bracket

2. Install new 90° mounting bracket to the cannon plug and secure with the clamp and attaching screws retained at disassembly. (Tighten securely).



- a** - Cannon Plug
- b** - 90° Mounting Bracket
- c** - Clamp
- d** - Attaching Screws

3. Install the 90° mounting bracket forward of the original mounting location.
4. Insert the attaching bolts from the outside of the engine bracket and thread into the 90° mounting bracket holes at location shown below. (Tighten securely).



- a** - New Cannon Plug Bracket Location