

Circulate to:  Sales Manager  Accounting  Service Manager  Technician  Parts Manager

## K-Plane Design Improvements

### Models Affected

Models 150S, 280S, and 380S trim tab assemblies.

### Situation

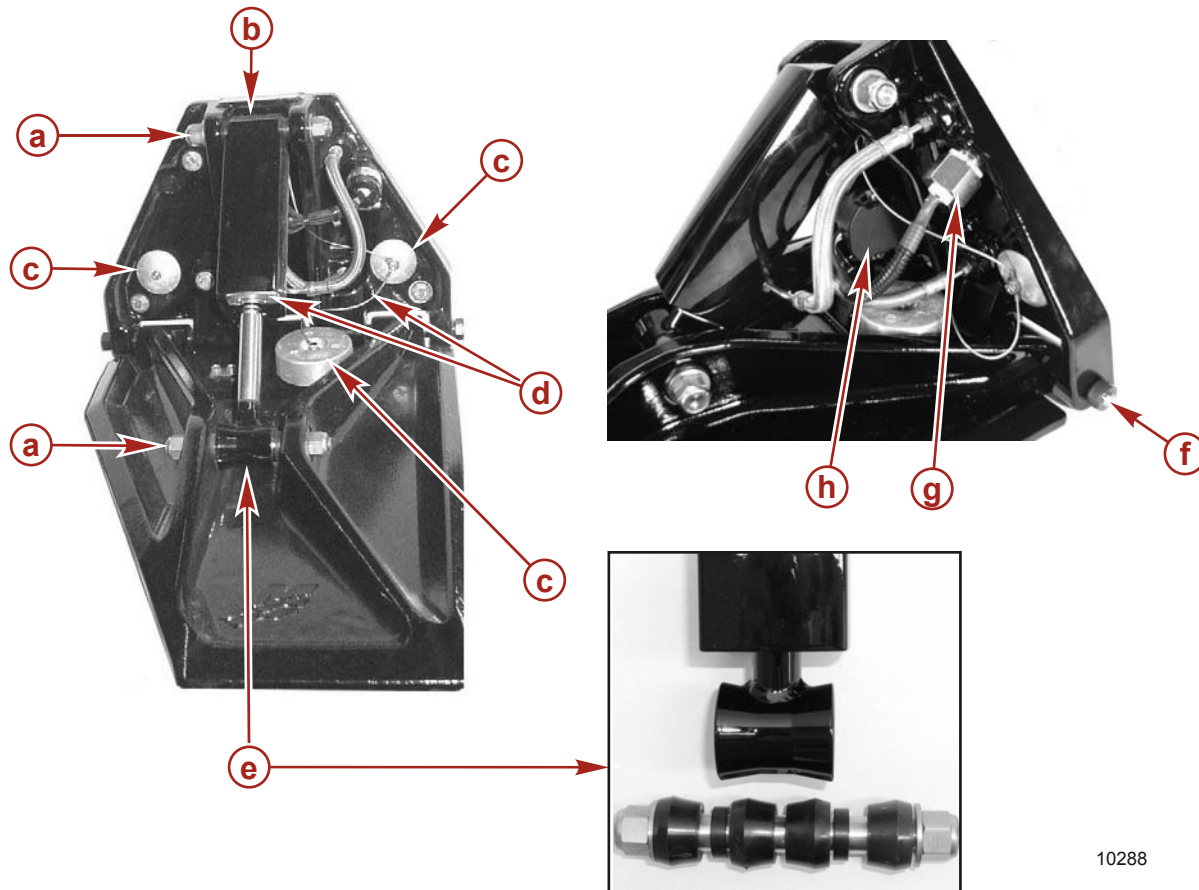
Mercury Racing has made design improvements to the K-Planes to increase shock resistance and reduce wear and corrosion. The parts used for these improvements are not interchangeable with the previous K-Plane design. Currently, the design improvements are only available for the 280S model. There is no change to the installation procedures of the K-Plane assemblies.

THE INFORMATION IN THIS DOCUMENT IS CONFIDENTIAL AND PROTECTED BY COPYRIGHT AND IS THE PROPERTY OF MERCURY MARINE.

This document is provided for the sole and exclusive use of the original recipient as prescribed by Mercury Marine and may not be distributed or copied, digitally or otherwise, without the prior written consent of Mercury Marine.

## Improvements

The following design improvements have been initiated for the K-Planes:



10288

Item	Description
a	Increased diameter of the hydraulic cylinder mounting pins from 12.7 mm (0.5 in.) to 15.9 mm (0.625 in.) for greater strength
b	Replaceable bushings at the upper cylinder mounting pin to better withstand impacts and reduce corrosion
c	Improved corrosion protection due to increased size and number of anodes
d	Better bonding grounds to the anodes and the cylinder end cap
e	Tapered bushings in the cylinder rod end and the trim tab provides excellent stability, shock resistance and corrosion protection
f	The trim tab pivot pin utilizes a special molded bearing cover that provides longer life and corrosion protection
g	Digital trim tab position sender harness and cable grip
h	Digital trim tab position sender; can be used with an analog gauge interface (AGI) or an analog gauge module

THE INFORMATION IN THIS DOCUMENT IS CONFIDENTIAL AND PROTECTED BY COPYRIGHT AND IS THE PROPERTY OF MERCURY MARINE.

This document is provided for the sole and exclusive use of the original recipient as prescribed by Mercury Marine and may not be distributed or copied, digitally or otherwise, without the prior written consent of Mercury Marine.

## K-Plane Assembly Part Numbers

**NOTE:** This service bulletin will not be updated as the part numbers change to reflect the latest available K-Planes.

**NOTE:** The 280S K-Plane assembly with mechanical actuator, part number 842768A01, supersedes 843754A2, which is no longer available.

Description	Current Part Number	Previous Part Number
280S K-Plane w/Mechanical Actuator	842768A01	843754A2
280S K-Plane w/Digital Sender	842768A05	N/A
Analog Gauge Module	884359A03	N/A
Analog Gauge Interface (AGI)	892486K05	N/A

## MECHANICAL ACTUATOR KIT PART NUMBERS

**NOTE:** Mechanical Actuator kit numbers 845630A02 and 845532A02 are new kit numbers to be used with the redesigned K-Plane assemblies. They do not supersede the existing actuator kit numbers because those kits are still required on previous models.

Description	Part Number with 15.9 mm (.625 in.) pin
Actuator Kit w/Plastic Cable Grip	845630A02
Actuator Kit w/Stainless Steel Cable Grip	845532A02



- a** - Cable grip and locknut assembly
- b** - Instruction sheets
- c** - Lower cylinder mounting pins for mechanical actuator cable
- d** - Nylon locknuts
- e** - Washers
- f** - Cable end
- g** - Nylon locknuts

THE INFORMATION IN THIS DOCUMENT IS CONFIDENTIAL AND PROTECTED BY COPYRIGHT AND IS THE PROPERTY OF MERCURY MARINE.

This document is provided for the sole and exclusive use of the original recipient as prescribed by Mercury Marine and may not be distributed or copied, digitally or otherwise, without the prior written consent of Mercury Marine.