



PARTS CATALOG

KF3, KF5, MARK5

SERIAL NUMBER

MARK 5, KF5, KF3 ALL

TABLE OF CONTENTS:

CARBURETOR ASSEMBLY	20
CHOKE ASSEMBLY (COMPLETE)	24
COWL AND FUEL TANK ASSEMBLY	6
CRANKCASE AND BEARING HOUSING ASSEMBLY	34
CRANKSHAFT AND CENTER MAIN BEARING ASSEMBLY	32
CYLINDER BLOCK ASSEMBLY	26
CYLINDER, CRANKSHAFT AND CRANKCASE ASSEMBLY	36
MAGNETO ASSEMBLY, COMPLETE (PHELON)	10
MAGNETO ASSEMBLY, COMPLETE (SCINTILLA)	14
NEUTRAL LEVER ASSEMBLY	2
PISTON AND CONNECTING ROD ASSEMBLY	30
STARTER ASSEMBLY	4

NOTE: *Indented description indicate that these parts are included in preceeding assembly.*

AR = As Required

NSS = Not Sold Separate

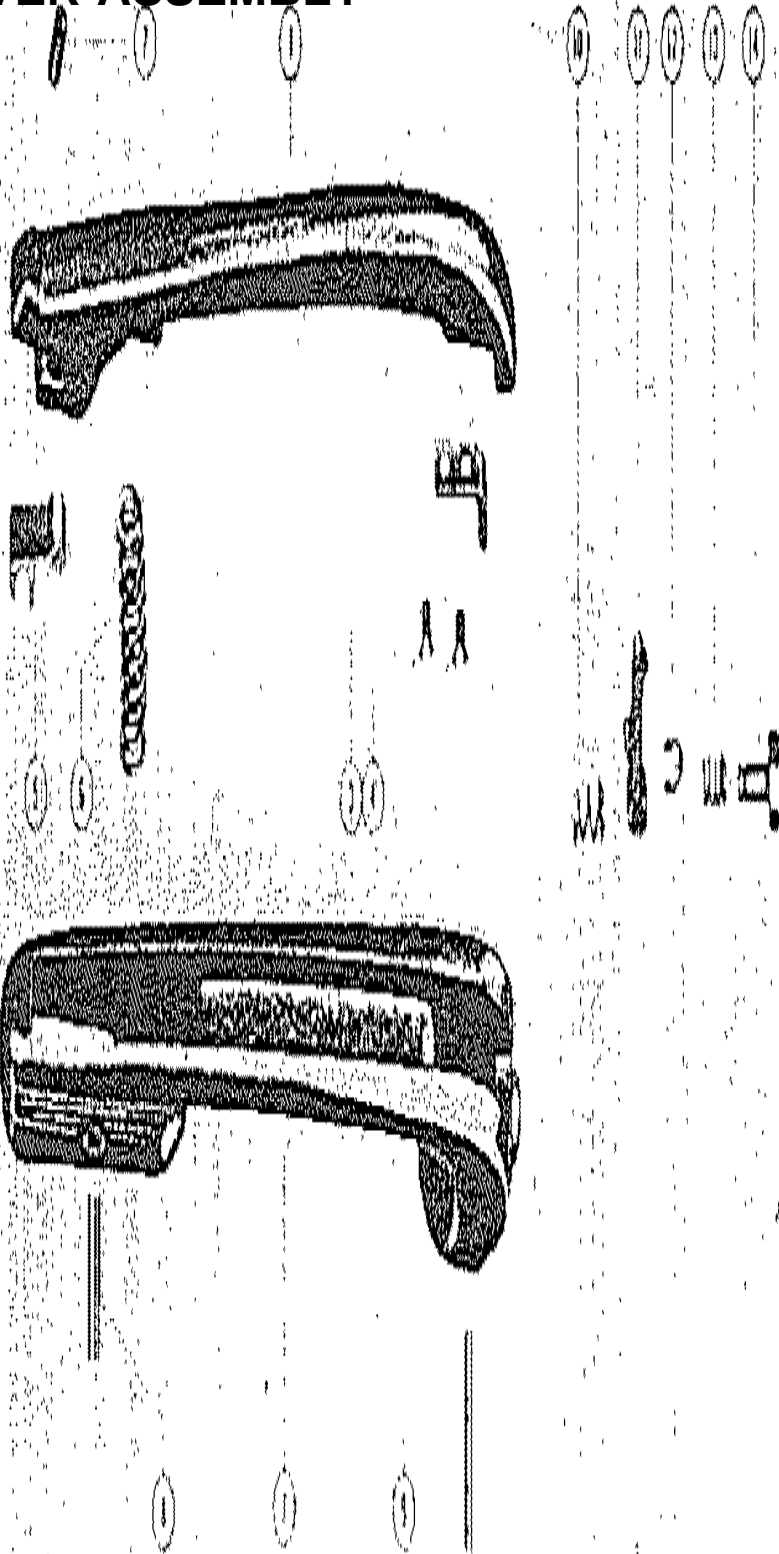
OPT = Optional

NS = Not Shown

THESE PARTS BOOKS/FICHE CARD ARE COPYRIGHTED AND MAY NOT BE DISTRIBUTED OR REPRODUCED IN ANY OTHER FORMAT BY ANYONE OTHER THAN MERCURY MARINE WITHOUT THE PRIOR WRITTEN CONSENT OF MERCURY MARINE.

THIS PAGE INTENTIONALLY LEFT BLANK

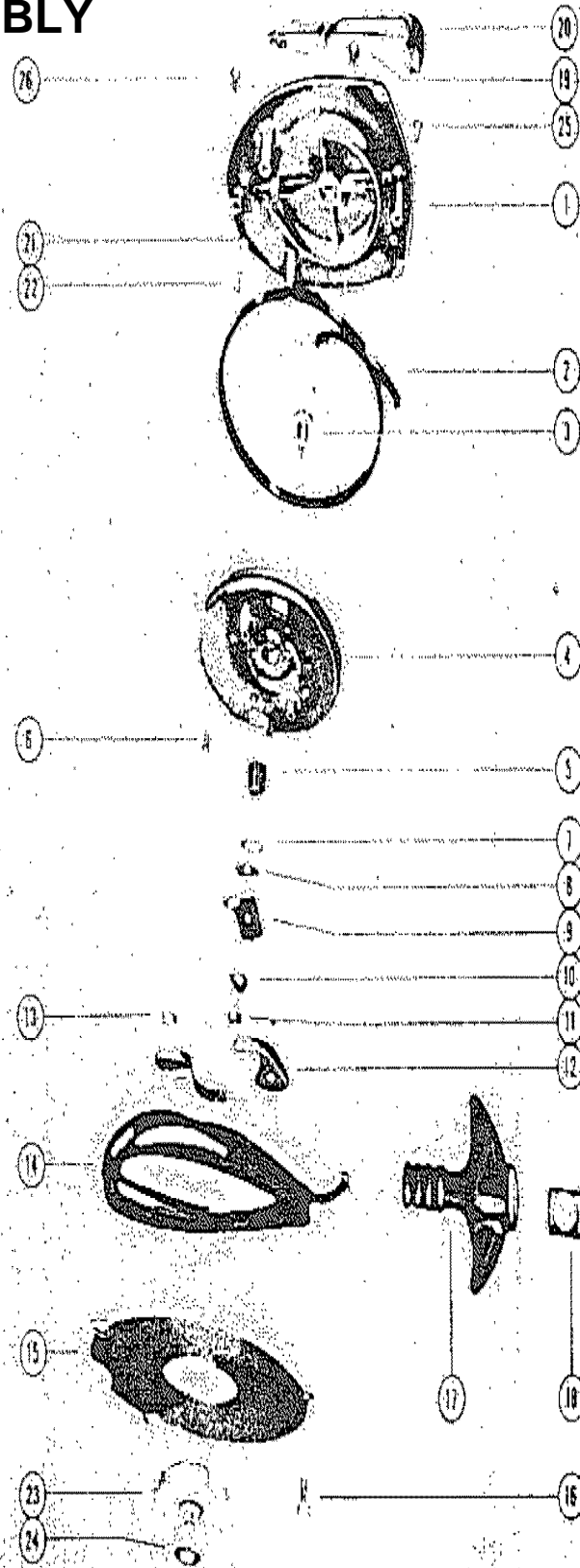
NEUTRAL LEVER ASSEMBLY



NEUTRAL LEVER ASSEMBLY

REF. NO.	PART NO.	SYM.	QTY.	DESCRIPTION
1	24195A1		,,,,,,1	NEUTRAL LEVER ASSEMBLY
2	10-24229		,,,,,,1	SCREW, NEUTRAL LEVER ADJUSTING
3	24196		,,,,,,1	CATCH, FINGER RELEASE
4	10-22379		,,,,,,2	SCREW, RELEASE FINGER CATCH
5	24197		,,,,,,1	YOKE, NEUTRAL LEVER ADJUSTING
6	24-24199		,,,,,,1	SPRING, NEUTRAL LEVER
7	24189		,,,,,,1	BODY, AUXILIARY HANDLE
8	17-24198		,,,,,,1	PIN, ROLL - AUXILIARY HANDLE TO NEUTRAL LEVER
9	17-24192		,,,,,,1	PIN, ROLL - AUXILIARY HANDLE RO RELEASE FINGER
10	24-24191		,,,,,,1	SPRING, RELEASE FINGER
11	24190		,,,,,,1	FINGER, RELEASE
12	53-21058		,,,,,,1	"E" RING, RELEASE BUTTON RETAINING
13	24-24194		,,,,,,1	SPRING, RELEASE BUTTON
14	24193		,,,,,,1	BUTTON, RELEASE

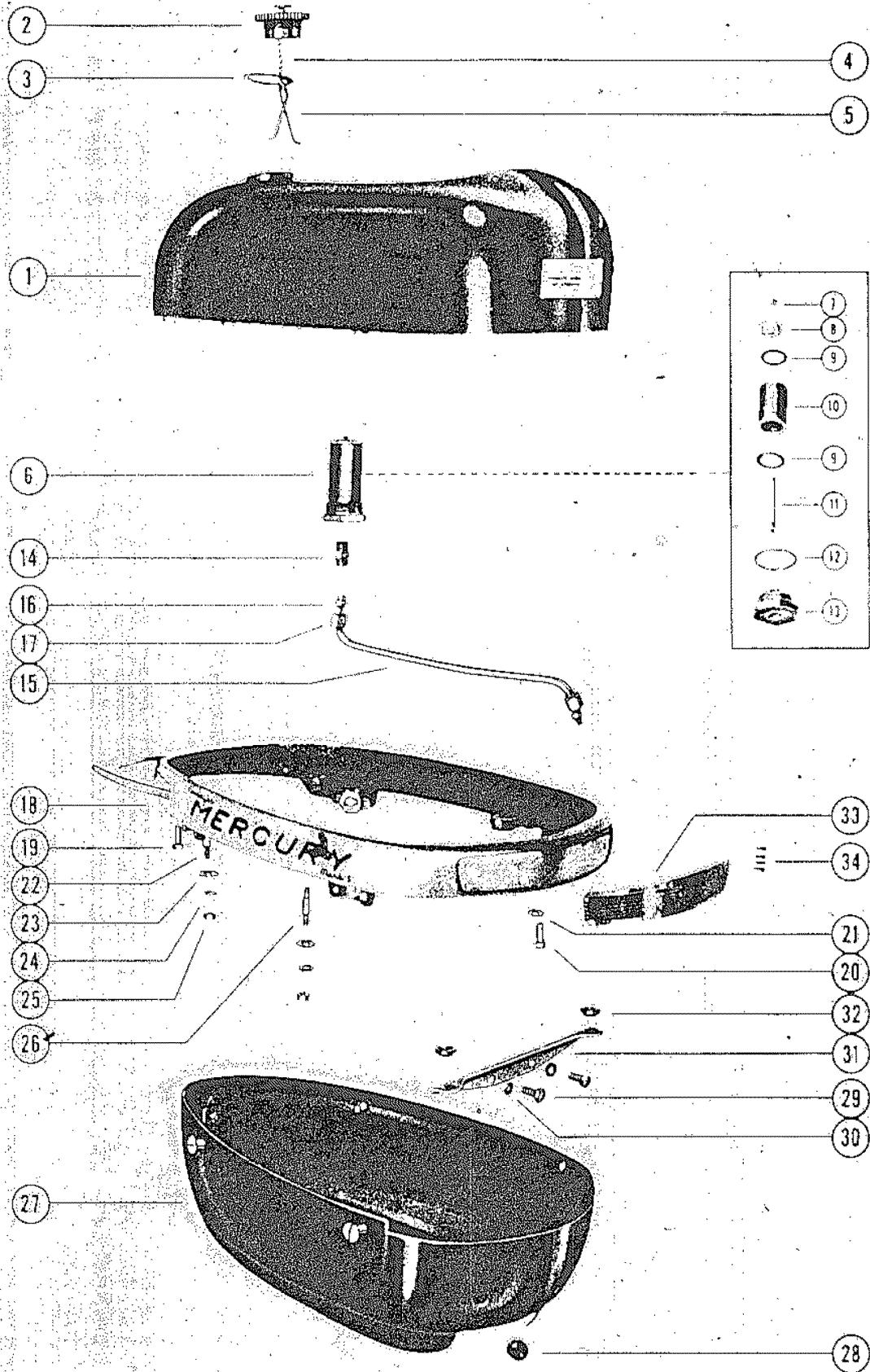
STARTER ASSEMBLY



STARTER ASSEMBLY

REF. NO.	PART NO.	SYM.	QTY.	DESCRIPTION
-	24091A2		1,1,1,1,1,	STARTER ASSEMBLY, COMPLETE
1	24080A2		1,1,1,1,1,	STARTER COVER ASSEMBLY
	143-768A1		,,,,,,1	STARTER COVER ASSEMBLY
-	17-22439		1,1,1,1,1,	PIN, SPRING ANCHOR
-	17-24198		,,,,,,1	PIN, SPRING ANCHOR
-	17-20563		1,1,1,1,1,	PIN, SHEAVE SHAFT RETAINING
2	24-24081		1,1,1,1,1,	SPRING, STARTER
3	24170		1,1,1,1,1,	SHAFT, STARTER SHEAVE
4	24080A5		1,1,1,1,1,	STARTER SHEAVE ASSEMBLY
-	17-24171		1,1,1,1,1,	PIN, RETAINER
-	17-20564		1,1,1,1,1,	PIN, STARTER ANCHOR
5	24078		2,2,2,2,2,	THREAD GUIDE
6	10-24776		2,2,2,2,2,	SCREW, SHEAVE REINFORCING
7	15-20767		1,1,1,1,1,	SHIM, SHEAVE SHAFT (.010)
8	12-24172		1,1,1,1,1,	WASHER, SHEAVE SHAFT
9	24085		1,1,1,1,1,	RETAINER, STARTER PAWL
10	13-20511		1,1,1,1,1,	WASHER, WAVE - STARTER PAWL
11	24169		1,1,1,1,1,	COLLAR, SHEAVE SHAFT
12	24181A1		2,2,2,2,2,	STARTER PAWL ASSEMBLY
13	20793		2,2,2,2,2,	MAGNET, STARTER PAWL
14	22681A1		1,1,1,1,1,	STARTER CABLE ASSEMBLY
15	24082		1,1,1,1,1,	PLATE, FRICTION
16	10-22491		3,3,3,3,3,	SCREW, FRICTION PLATE TO COVER
17	20662		1,1,1,1,1,	HANDLE, STARTER CABLE
18	24804		1,1,1,1,1,	END CAP, STARTER HANDLE
19	10-20778		1,1,1,1,1,	SCREW, SHEAVE SHAFT TO COVER
20	24168		1,1,1,1,1,	AUXILIARY HANDLE, STARTER COVER
21	13-26996		4,4,4,4,4,	LOCKWASHER, AUXILIARY HANDLE SCREW
22	10-20411		4,4,4,4,4,	SCREW, AUXILIARY HANDLE
23	24084		1,1,1,1,,,	RATCHET, STARTER
	22680		,,,,1,1,1,	RATCHET, STARTER
24	12-20959		,,,,1,1,1,	WASHER, STARTER RATCHET (OPTIONAL)
25	10-24645		,,,2,2,2,2	SCREW, STARTER COVER TO TANK (FRONT)
26	10-22390		,,,1,1,1,1	SCREW, STARTER COVER TO TANK (REAR)
-	24086		1,1,1,,,,,	PLATE, AUXILIARY STARTER
-	10-20401		3,3,3,,,,,	SCREW, AUXILIARY STARTER PLATE
-	13-26996		3,3,3,,,,,	LOCKWASHER, AUXILIARY STARTER PLATE SCREW
-	100-22484		3,3,3,,,,,	SCREW,, STARTER COVER TO TANK

COWL AND FUEL TANK ASSEMBLY

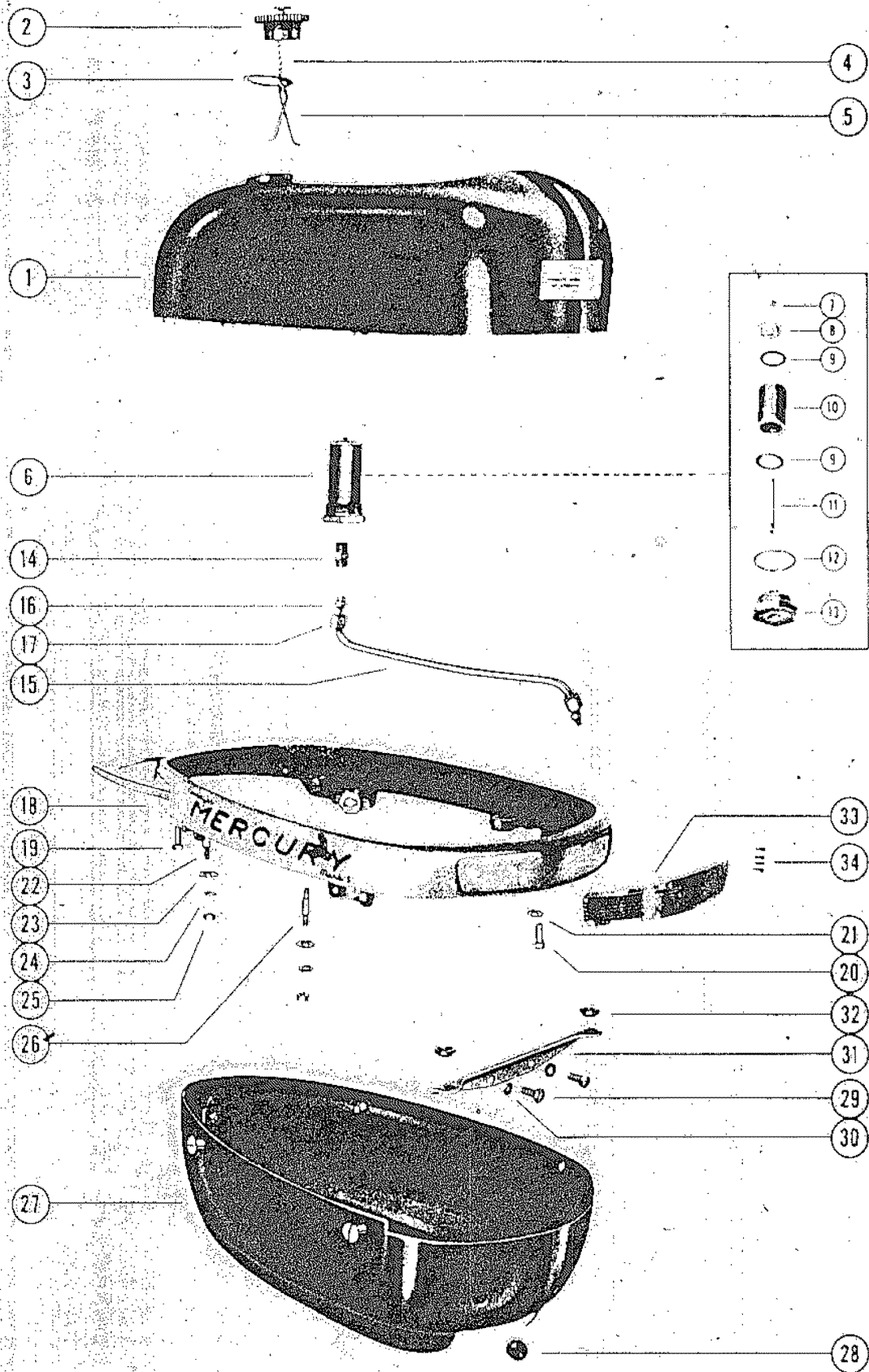


COWL AND FUEL TANK ASSEMBLY

REF. NO.	PART NO.	SYM.	QTY.	DESCRIPTION
1	1217-631A1		1,1,,,,,,	FUEL TANK ASSEMBLY
	1218-634A1		,,1,1,1,1,	FUEL TANK ASSEMBLY
-	23318		1,1,1,1,1,	CABLE GUIDE
-	27-23319		1,1,1,1,1,	GASKET, CABLE GUIDE
-	11-23320		1,1,1,1,1,	NUT, CABLE GUIDE
2	36-21317A2		1,1,,,,,,	FUEL TANK CAP ASSEMBLY (1 1/32" OPENING)
	36-23338A1		,,1,1,1,1,	FUEL TANK ASSEMBLY (1 3/32" OPENING)
3	27-21544		1,1,,,,,,	GASKET, FUEL TANK CAP (FOR 36-21317A2)
	27-23331		,,1,1,1,1,	GASKET, FUEL TANK CAP (FOR 36-23338A1)
4	36-23589A1		1,1,1,1,1,	CHAIN AND SPRING ASSEMBLY
5	24-23244		1,1,1,1,1,	SPRING, FUEL TANK CAP RETAINER
-	27-23245		1,1,1,1,1,	GASKET, FUEL TANK CAP VENT SCREW
-	12-26014		1,1,,,,,,	WASHER, FUEL TANK CAP VENT SCREW
-	12-20286		,,1,1,1,1,	WASHER, FUEL TANK CAP VENT SCREW
-	18-20180		1,1,1,1,1,	COTTER PIN, FUEL TANK CAP RETAINER
-	10-23339		1,1,1,1,1,	SCREW, VENT - FUEL TANK CAP
6	35-23262		1,1,1,1,1,	FUEL FILTER ASSEMBLY
7	11-20190		1,1,1,1,1,	NUT, FILTER STUD
8	21460		1,1,1,1,1,	END CAP
9	12-21464		2,2,2,2,2,	WASHER, FILTER STUD
10	35-21463		1,1,1,1,1,	ELEMENT, FILTER
11	16-21451		1,1,1,1,1,	STUD, FILTER
12	27-23211		1,1,1,1,1,	GASKET, FILTER TO TANK
13	11-23263		1,1,1,1,1,	NUT, ADAPTOR
14	22-23216		1,1,1,1,1,	CONNECTOR, FUEL LINE
-	32-23341A1		1,1,1,1,1,	FUEL LINE ASSEMBLY
15	32-23341		1,1,1,1,1,	FUEL LINE
-	32-22682A1		,,1,1,1,	FUEL LINE ASSEMBLY
	32-22682		,,1,1,1,	FUEL LINE
16	23-21309		2,2,2,2,2,	SLEEVE, COMPRESSION - FUEL LINE
17	11-21310		2,2,2,2,2,	NUT, COMPRESSION - FUEL LINE
18	23322A1		1,1,1,1,1,	PROTECTOR RIM ASSEMBLY
19	10-21722		1,1,1,1,1,	SCREW, PROTECTOR RIM
-	12-24668		1,1,1,1,1,	WASHER, PROTECTOR RIM SCREW
18	21094A1		,,1,1,1,	PROTECTOR RIM ASSEMBLY
	23349A1		,,1,1,1,	PROTECTOR RIM ASSEMBLY
-	11-22684		,,4,4,4,	NUT, SPRING UNIT
-	17-23336		,,8,8,8,	RIVET, NUT TO PROTECTOR RIM
20	10-21722		4,4,4,1,1,	SCREW, FUEL TANK TO PROTECTOR RIM
	10-20540		,,4,4,4,4,	SCREW, FUEL TANK TO PROTECTOR RIM
21	13-24669		,,4,4,4,	LOCKWASHER, PROTECTOR RIM TO TANK SCREW
22	16-23143		,,2,2,2,	STUD, CYLINDER COVER TO PROTECTOR RIM
23	12-23327		,,2,2,2,	WASHER, BRACKET TO PROTECTOR RIM (RUBBER)

CONTINUED ON NEXT PAGE ➡

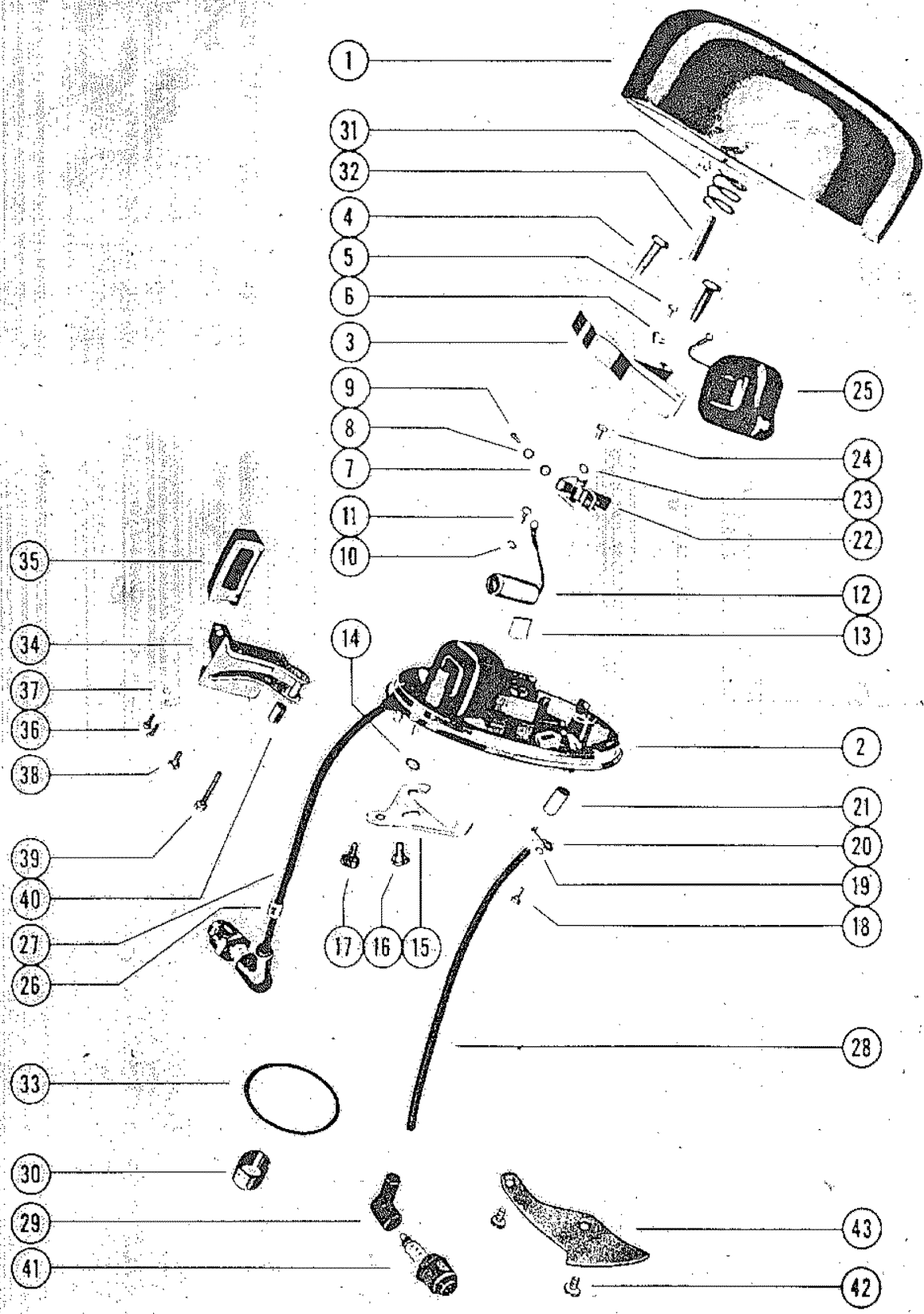
COWL AND FUEL TANK ASSEMBLY



COWL AND FUEL TANK ASSEMBLY

REF. NO.	PART NO.	SYM.	QTY.	DESCRIPTION
24	12-24664		2,2,2	WASHER, PROTECTOR RIM STUD
25	11-24652		2,2,2	NUT, PROTECTOR RIM STUD
26	16-21718		2,2,2	STUD, BRACKET TO PROTECTOR RIM
27	108-152A1		1,1,1	COWL ASSEMBLY
	108-153A1		1	COWL ASSEMBLY
28	25-22683		1,1,1	GROMMET, CHOKE ROD
-	11-22684		2,2,2	NUT, SPRING UNIT
-	17-22685		4,4,4	UT TO COWL
-	16-23334		2,2,2	STUD (REAR)
-	16-23335		4,4,4	STUD (SIDES)
-	17-23333		6,6,6	PIN, CROSS
-	21095		1	SHEILD
-	25-21099		2	GROMMET, RUBBER-SHEILD BOSSES (UPPER)
-	25-20116		1	GROMMET, RUBBER-SHEILD BOSSES (LOWER)
-	24-21097		2	SPRING, SHEILD BOSSES (UPPER)
-	11-21096		2	H-ON SHEILD BOSSES
-	21098		2	BUMPER, RUBBER - SHEILD FASTENING
-	131-628		1,1,1,1,1	COWL, PORT SIDE
-	132-629		1,1,1,1,1	COWL, STARBOARD SIDE
29	10-20031		2,2,2	SCREW, FUEL TANK MOUNTING BRACKET
30	13-26992		2,2,2	LOCKWASHER, FUEL TANK BRACKET SCREW
31	21712		1,1,1	BRACKET, FUEL TANK MOUNTING (FRONT)
32	23-21717		2,2,2	BUSHING, BRACKET TO PROTECTOR RIM (FRONT)
33	38-23340		1,1,1,1,1	SERIAL PLATE
	38-23337		1,1,1,1,1	SERIAL PLATE
	38-23489		1	SERIAL PLATE
34	10-20314		4,4,4,4,4	SCREW, DRIVE
-	10-22491		6,6,6,6,6	SCREW, PROTECTOR RIM TO COWL
-	12-24668		6,6,6,6,6	WASHER, PROTECTOR RIM TO COWL SCREW
-	10-22038		3,3,3,3,3	SCREW, COWL TO COWL
-	10-22485		2,2,2,2,2	SCREW, BRACKET TO PROTECTOR RIM
-	13-26992		6,6,6,6,6	LOCKWASHER, FUEL TANK TO PROTECTOR RIM
-	12-20583		2,2,2,2,2	WASHER, BRACKET RIM SCREW

MAGNETO ASSEMBLY, COMPLETE (PHELON)

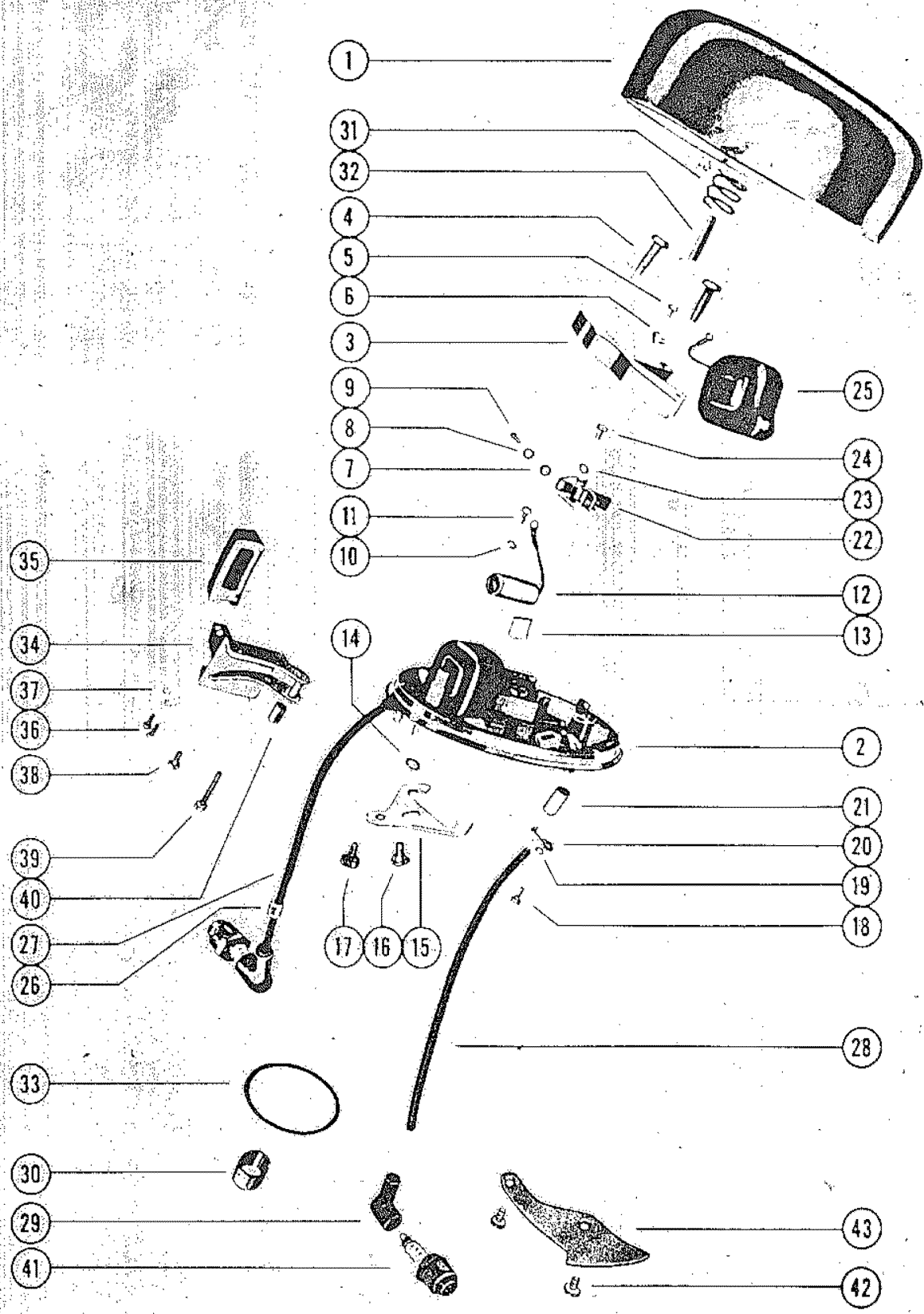


MAGNETO ASSEMBLY, COMPLETE (PHELON)

REF. NO.	PART NO.	SYM.	QTY.	DESCRIPTION
-	317-724		1,,,	MAGNETO ASSEMBLY, COMPLETE (PHELON)
-	318-728		,1,1,	MAGNETO ASSEMBLY, COMPLETE (PHELON)
-	317-772		,,,1	MAGNETO ASSEMBLY, COMPLETE (PHELON)
1	398-727		1,,,	FLYWHEEL
	398-691		,1,1,1	FLYWHEEL
2	398-725A1		1,,,	STATOR PLATE ASSEMBLY
	398-712A1		,1,1,1	STATOR PLATE ASSEMBLY
3	398-725		1,,,	STATOR AND CORE
	398-712		,1,1,1	STATOR AND CORE
4	10-23556		2,,,	SCREW, CORE FASTENING
	10-23556		,4,4,4	SCREW, CORE FASTENING
5	10-21130		1,,,	SCREW, GROUND TERMINAL
	10-21130		,2,2,2	SCREW, GROUND TERMINAL
6	398-732		1,,,	CLIP, GROUND WIRE
	398-732		,2,2,2	CLIP, GROUND WIRE
7	398-723		1,,,	INSALATOR, BREAKER CONNECTION SCREW
	398-723		,2,2,2	INSALATOR, BREAKER CONNECTION SCREW
8	12-21135		1,,,	WASHER, BREAKER CONNECTION SREW
	12-21135		,2,2,2	WASHER, BREAKER CONNECTION SREW
9	10-23976		1,,,	SCREW, BREAKER CONNECTION
	10-23976		,2,2,2	SCREW, BREAKER CONNECTION
10	13-21134		1,,,	LOCKERWASHER, CONDENSER ATTACHING SCREW
	13-21134		,2,2,2	LOCKERWASHER, CONDENSER ATTACHING SCREW
11	10-21133		1,,,	SCREW, CONDENSER ATTACHING
	10-21133		,2,2,2	SCREW, CONDENSER ATTACHING
12	398-713		1,,,	CONDENSER
	398-713		,2,2,2	CONDENSER
13	398-723		1,1,1,	FELT WICK, CAM WIPER
14	13-21144		2,2,2,2	LOCKWASHER, FRICTION CLAMP STUD
15	398-717		2,2,2,2	CLAMP, FRICTION
16	16-24450		2,2,2,2	STUD, FRICTION CLAMP
17	10-23992		2,2,2,2	SCREW, FRICTION CLAMP
18	10-21138		1,,,	SCREW, LEAD WIRE CLAMP
	10-21138		,2,2,2	SCREW, LEAD WIRE CLAMP
19	13-21137		1,,,	LOCKWASHER, LEAD WIRE CLAMP SCREW
	13-21137		,2,2,2	LOCKWASHER, LEAD WIRE CLAMP SCREW
20	398-720		1,1,1,1	CLAMP, LEAD WIRE TUBE
21	32-21137		1,,,	TUBE, LEAD WIRE
	32-21137		,2,2,2	TUBE, LEAD WIRE
22	398-174		1,,,	BREAKER POINT ASSEMBLY
	398-174		,2,2,2	BREAKER POINT ASSEMBLY
23	13-21134		1,,,	LOCKWASHER, FIXED CONTACT SCREW
	13-21134		,2,2,2	LOCKWASHER, FIXED CONTACT SCREW

CONTINUED ON NEXT PAGE ➡

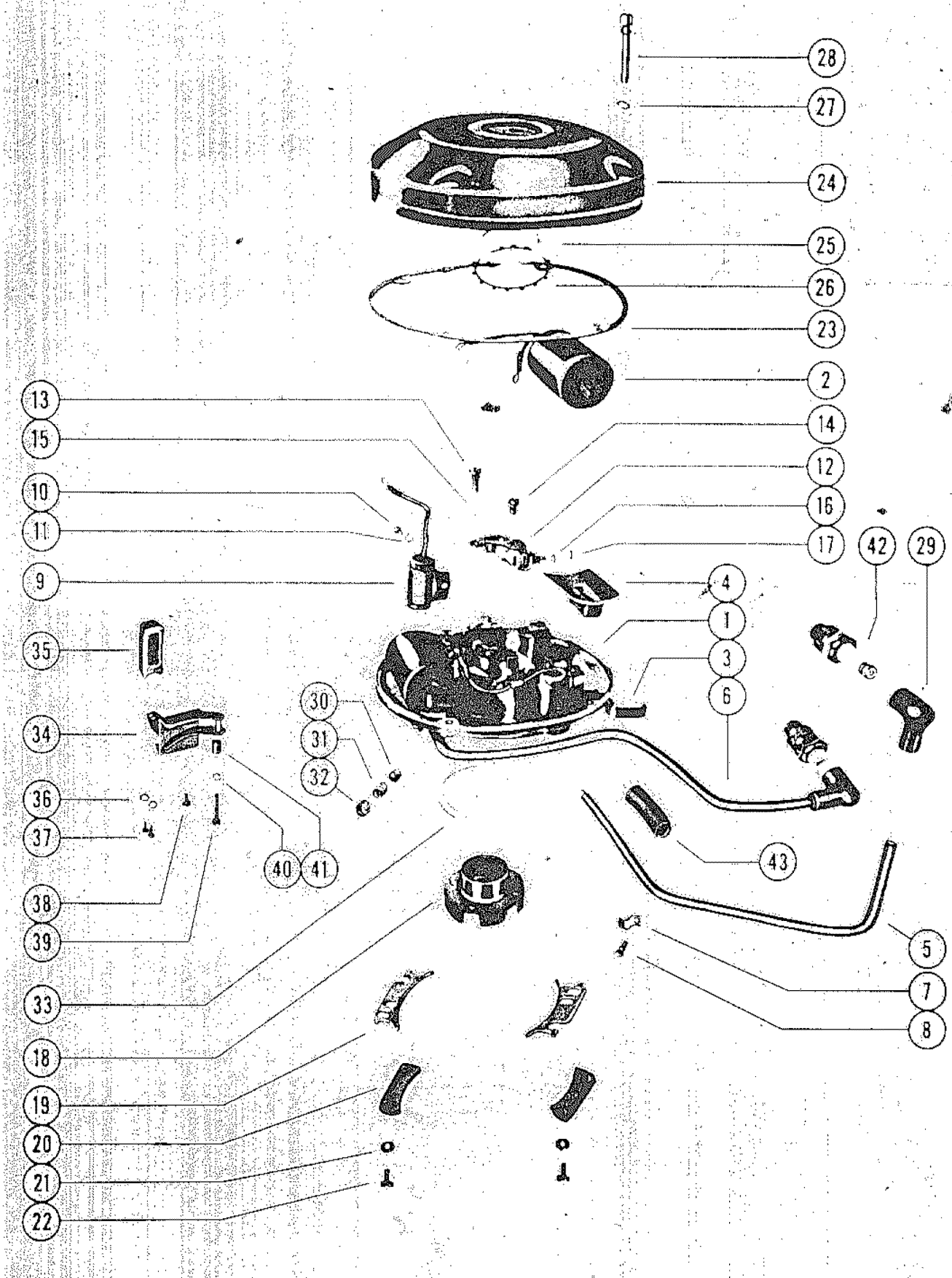
MAGNETO ASSEMBLY, COMPLETE (PHELON)



MAGNETO ASSEMBLY, COMPLETE (PHELON)

REF. NO.	PART NO.	SYM.	QTY.	DESCRIPTION
24	10-21133		1,,,	SCREW, FIXED CONTACT
	10-21133		,2,2,2	SCREW, FIXED CONTACT
25	398-716		1,,,	COIL, IGNITION
	398-716		,2,2,2	COIL, IGNITION
26	20623		,1,1,1	MARKER, "TOP"-LEAD WIRE
27	398-695		1,1,1,1	LEAD, HIGH TENSION - TOP
28	398-696		,1,1,1	LEAD, HIGH TENSION -BOTTOM
29	20119		1,,,	PROTECTOR, SPARK PLUG
	20119		,2,2,2	PROTECTOR, SPARK PLUG
30	398-1033		1,,,	CAM, BREAKER
	398-694		,1,1,1	CAM, BREAKER
31	24-22677		,1,1,1	SPRING, MAGNETO
32	28-22026		1,,,	KEY, FLYWHEEL
	28-22676		,1,1,1	KEY, FLYWHEEL
33	15-20626		,1,1,1	SHIM, MAGNETO PILOT (.015)
-	13-22027		1,,,	WASHER, WAVE - FLYWHEEL
34	24075A1		1,,,	THROTTLE HANDLE ASSEMBLY
	22861A1		,1,1,1	THROTTLE HANDLE ASSEMBLY
35	24076		1,,,	KNOB, THROTTLE HANDLE
	24167		,1,1,1	KNOBK, THROTTLE HANDLE
36	10-22028		2,2,2,2	SCREW,, THROTTLE HANDLE KNOB ATTACHING
37	13-26991		2,,,	LOCKWASHER, THROTTLE HANDLE ATTACHING SCREW
	13-26991		,1,1,1	LOCKWASHER, THROTTLE HANDLE ATTACHING SCREW
	13-22675		,1,1,1	LOCKWASHER, THROTTLE HANDLE ATTACHING SCREW
38	10-20616		1,1,1,1	SCREW, THROTTLE HANDLE ATTACHING - SHROT
39	10-24620		1,,,	SCREW, THROTTLE HANDLE ATTACHING - LONG
	10-22031		,1,1,1	SCREW, THROTTLE HANDLE ATTACHING - LONG
40	23-23937		1,,,	SPACER, THROTTLE CAM
	23-20618		,1,1,1	SPACER, THROTTLE CAM
41	33-22805		1,,,	SPARK PLUG
	33-22805		,2,2,2	SPARK PLUG
42	10-22028		,,,2	SCREW, LIMIT PLATE
43	22673		,,,1	PLATE, LIMIT

MAGNETO ASSEMBLY, COMPLETE (SCINTILLA)

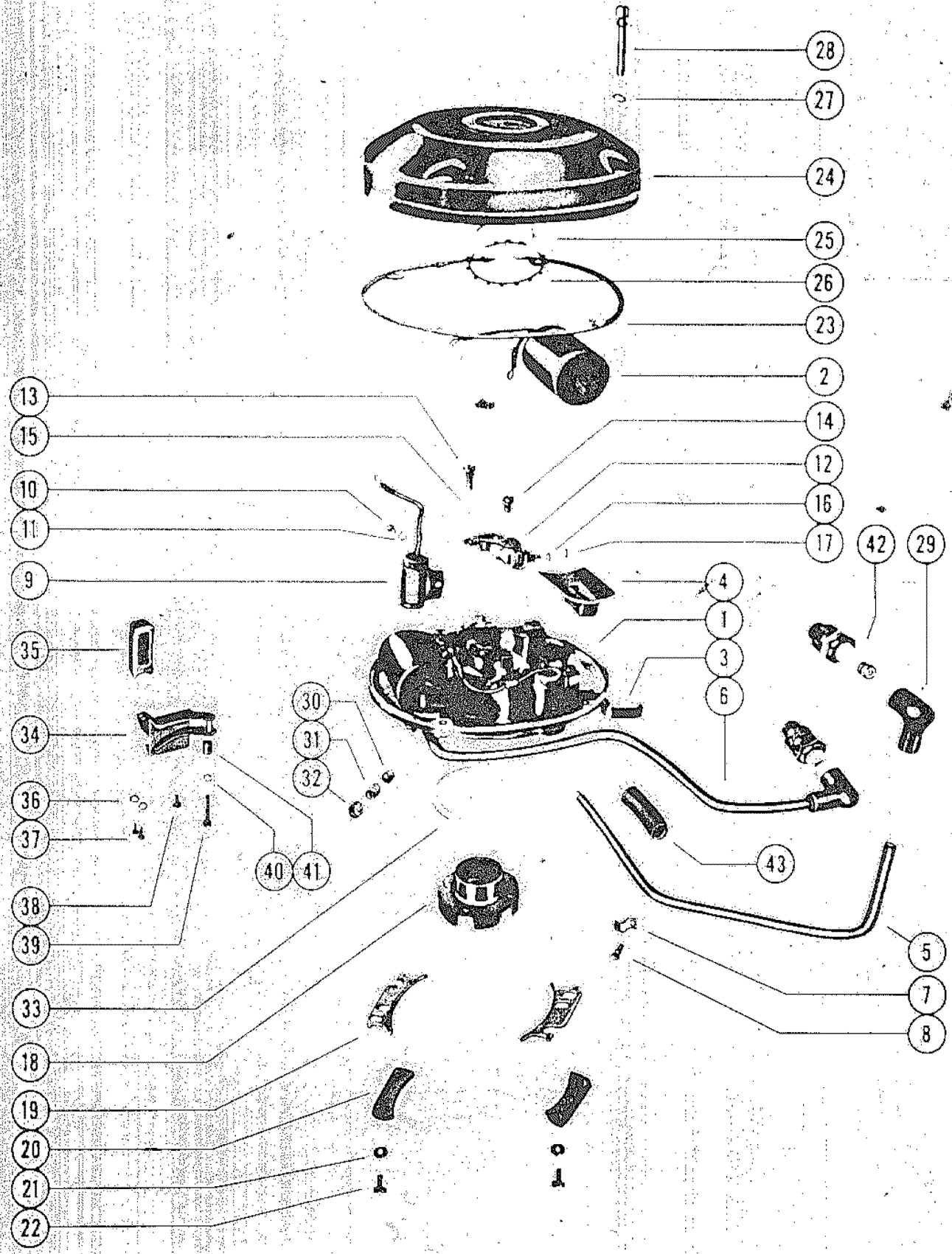


MAGNETO ASSEMBLY, COMPLETE (SCINTILLA)

REF. NO.	PART NO.	SYM.	QTY.	DESCRIPTION
-	312-662		1,1,1,,	MAGNETO ASSEMBLY (SCINTILLA K1-6)
-	321-853A1		,,,1,	MAGNETO ASSEMBLY (SCINTILLA K2A-3)
-	399-851		,,,,1	MAGNETO ASSEMBLY (SCINTILLA K2A-201)
1	399-663		1,1,1,,	PLAT, STATOR
	399-664		,,,1,	PLAT, STATOR
	399-751		,,,,1	PLAT, STATOR
2	399-756		1,1,1,,	COIL, IGITION
	399-756		,,,2,2	COIL, IGITION
3	399-126		2,2,2,,	CLAMP, COIL CORE FASTENING
	399-126		,,,4,4	CLAMP, COIL CORE FASTENING
4	399-129		1,1,1,,	INSULATOR, HIGH TENSION LEAD
	399-129		,,,2,2	INSULATOR, HIGH TENSION LEAD
5	399-665		1,1,1,1,	LEAD, HIGH TENSION - SHORT
	399-757		,,,,1	LEAD, HIGH TENSION - SHORT
6	399-666		,,,1,	LEAD, HIGH TENSION - LONG
	399-758		,,,,1	LEAD, HIGH TENSION - LONG
7	399-130		1,1,1,,	CLAMP, HIGH TENSION LEAD
	399-130		,,,2,2	CLAMP, HIGH TENSION LEAD
8	10-20884		1,1,1,,	SCREW, HIGH TENSION LEAD CLAMP
	10-20884		,,,2,2	SCREW, HIGH TENSION LEAD CLAMP
-	13-26995		1,1,1,,	LOCKWASHER, HIGH TENSION CLAMP SCREW
-	13-26995		,,,2,2	LOCKWASHER, HIGH TENSION CLAMP SCREW
9	399-123		1,1,1,,	CONDENSER
	399-123		,,,2,2	CONDENSER
10	10-20884		1,1,1,,	SCREW, CONDENSER ATTACHING
	10-20884		,,,2,2	SCREW, CONDENSER ATTACHING
11	13-26995		1,1,1,,	LOCKWASHER, CONDENSER ATTACHING SCREW
	13-26995		,,,2,2	LOCKWASHER, CONDENSER ATTACHING SCREW
12	399-675		1,1,1,,	BREAKER ASSEMBLY
	399-675		,,,2,	BREAKER ASSEMBLY
	399-121A1		,,,,2	BREAKER ASSEMBLY
13	10-20884		2,2,2,,	SCREW, BREAKER ASSEMBLY TO STATOR PLATE
	10-20884		,,,4,	SCREW, BREAKER ASSEMBLY TO STATOR PLATE
-	13-26995		2,2,2,,	LOCKWASHER, BREAKER ASSEMBLY SCREW
-	13-26995		,,,4,	LOCKWASHER, BREAKER ASSEMBLY SCREW
14	10-20879		,,,,4	SCREW AND LOCKWASHER, BREAKER ASSEMBLY TO STATOR PLATE
15	12-20878		1,1,1,,	WASHER, BREAKER ASSEMBLY SCREW
	12-20878		,,,2,2	WASHER, BREAKER ASSEMBLY SCREW
16	13-24658		1,1,1,,	LOCKWASHER, PRIMARY CONNECTOR TO BREAKER ASSEMBLY
	13-24658		,,,2,	LOCKWASHER, PRIMARY CONNECTOR TO BREAKER ASSEMBLY

CONTINUED ON NEXT PAGE ➡

MAGNETO ASSEMBLY, COMPLETE (SCINTILLA)

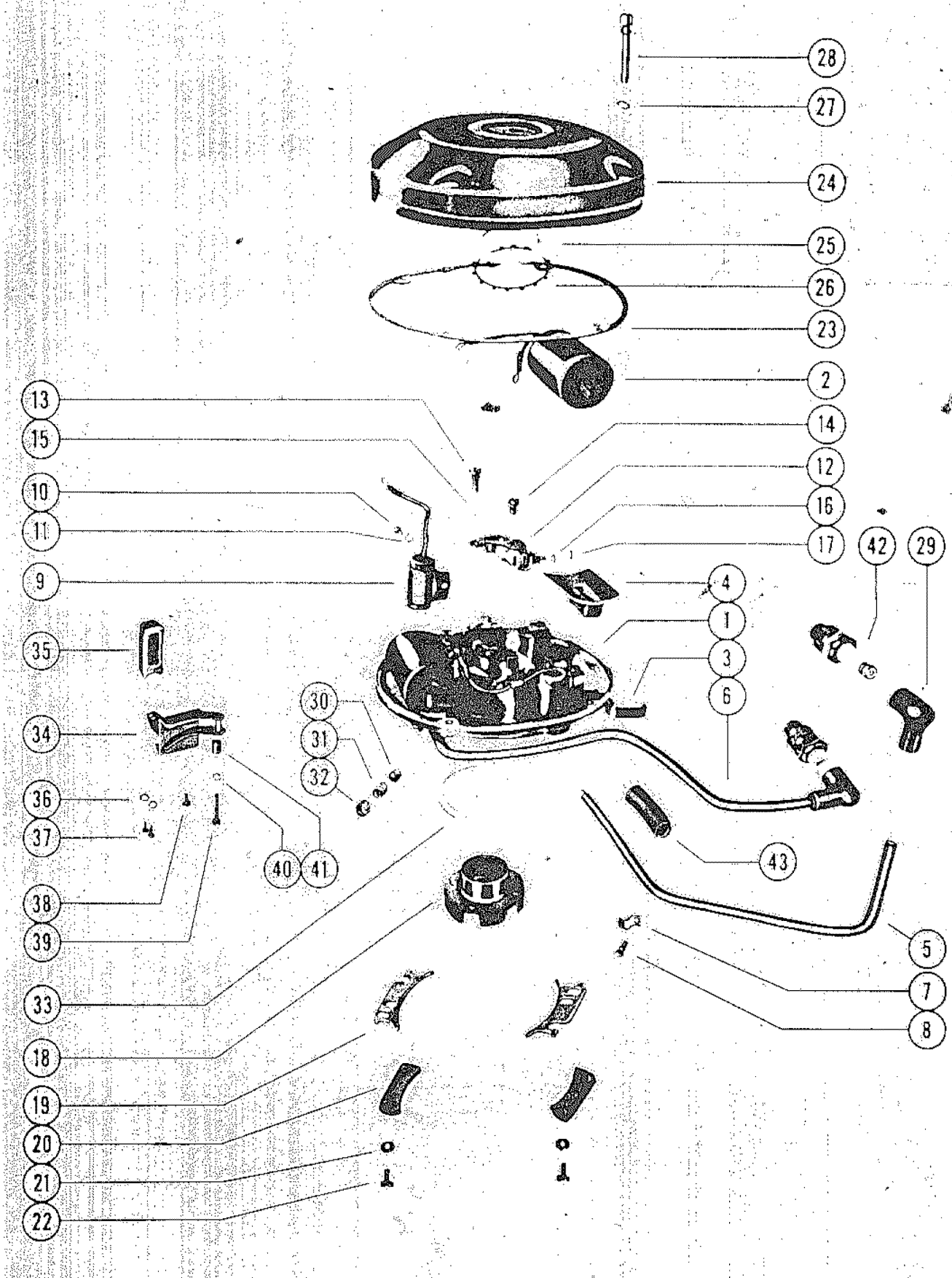


MAGNETO ASSEMBLY, COMPLETE (SCINTILLA)

REF. NO.	PART NO.	SYM.	QTY.	DESCRIPTION
16	13-20378		,,,2	LOCKWASHER, PRMRY CONNECTOR TO BREAKER ASSEMBLY
17	11-20881		1,1,1,,	NUT, PRIMARY CONNECTOR TO BREAKER ASSEMBLY
	11-20881		,,,2,2	NUT, PRIMARY CONNECTOR TO BREAKER ASSEMBLY
-	10-20672		1,1,1,,	SCREW, PRIMARY CONNECTOR TO STATOR PLATE
-	13-26995		1,1,1,,	LOCKWASHER, PRIMARY CONNECTOR TO STATOR PLATE SCREW
18	399-669		1,1,1,,	MAGNET, ROTATING
	399-670		,,,1,	MAGNET, ROTATING
	399-755		,,,1	MAGNET, ROTATING
19	24-23518		2,2,2,2,	SPRING, STATOR PLATE TENSION
	24-20569		,,,2	SPRING, STATOR PLATE TENSION
20	399-671		2,2,2,2,	PLATE, STATOR PLATE TENSION SPRING
	399-787		,,,2	PLATE, STATOR PLATE TENSION SPRING
21	13-26996		4,4,4,4,	LOCKWASHER, STATOR PLATE TENSION SCREW
22	10-24621		4,4,4,4,	SCREW, STATOR PLATE TENSION
-	10-24066		,,,4	SCREW AND LOCKWASHER, STATOR PLATE TENSION
23	27-20600		,,,1	GASKET, MAGNETO COVER
24	399-131		,,,1	COVER, MAGNETO
25	12-20885		,,,1	WASHER, FELT - MAGNETO COVER
26	399-132		,,,1	RING, LOCK - MAGNMETO COVER
27	12-20603		,,,4	WASHER, MAGNETO COVER SCREW
28	10-20602		,,,4	SCREW AND LOCKWASHER, MAGNETO COVER
29	20119		1,1,1,,	PROTECTOR, SPARK PLUG
	20119		,,,2,2	PROTECTOR, SPARK PLUG
30	20737		2,2,2,2,2	PLUG, FRICTION SCREW SPRING
31	24-20609		2,2,2,2,2	SPRING, FRICTION SCREW
32	10-20608		2,2,2,2,2	SCREW, TENSION
-	205-672A1		1,1,1,,	FLYWHEEL ASSEMBLY
-	205-672A2		,,,1,	FLYWHEEL ASSEMBLY
-	204-455		,,,1	FLYWHEEL
-	28-22440		1,1,1,,	KEY, FLYWHEEL
-	28-24065		,,,1,1	KEY, FLYWHEEL
-	233520		1,1,1,,	PLATE, COVER
-	12-20878		2,2,2,,	WASHER, COVER PLATE SCREW
-	10-20597		2,2,2,,	SCREW, COVER PLATE
33	15-20626		1,1,1,1,1	SHIM, STATOR PLATE (.015)
34	24075A1		1,1,1,,	THROTTLE HANDLE ASSEMBLY
	22861A1		,,,1,1	OTHLRODTTLE HANDLE ASSEMBLY
35	24076		1,1,1,,	KNOB, THROTTLE HANDLE
	24167		,,,1,1	KNLB, THROTTLE HANDLE
36	13-26991		2,2,2,2,2	LOCKWASHER, HANDLE ATTACHING SCREW
37	10-22028		2,2,2,2,2	SCREW, THROTTLE HANDLE KNOB ATTACHING
38	10-20616		1,1,1,1,1	SCREW, THROTTLE HANDLE ATTACHING - SHORT

CONTINUED ON NEXT PAGE ➡

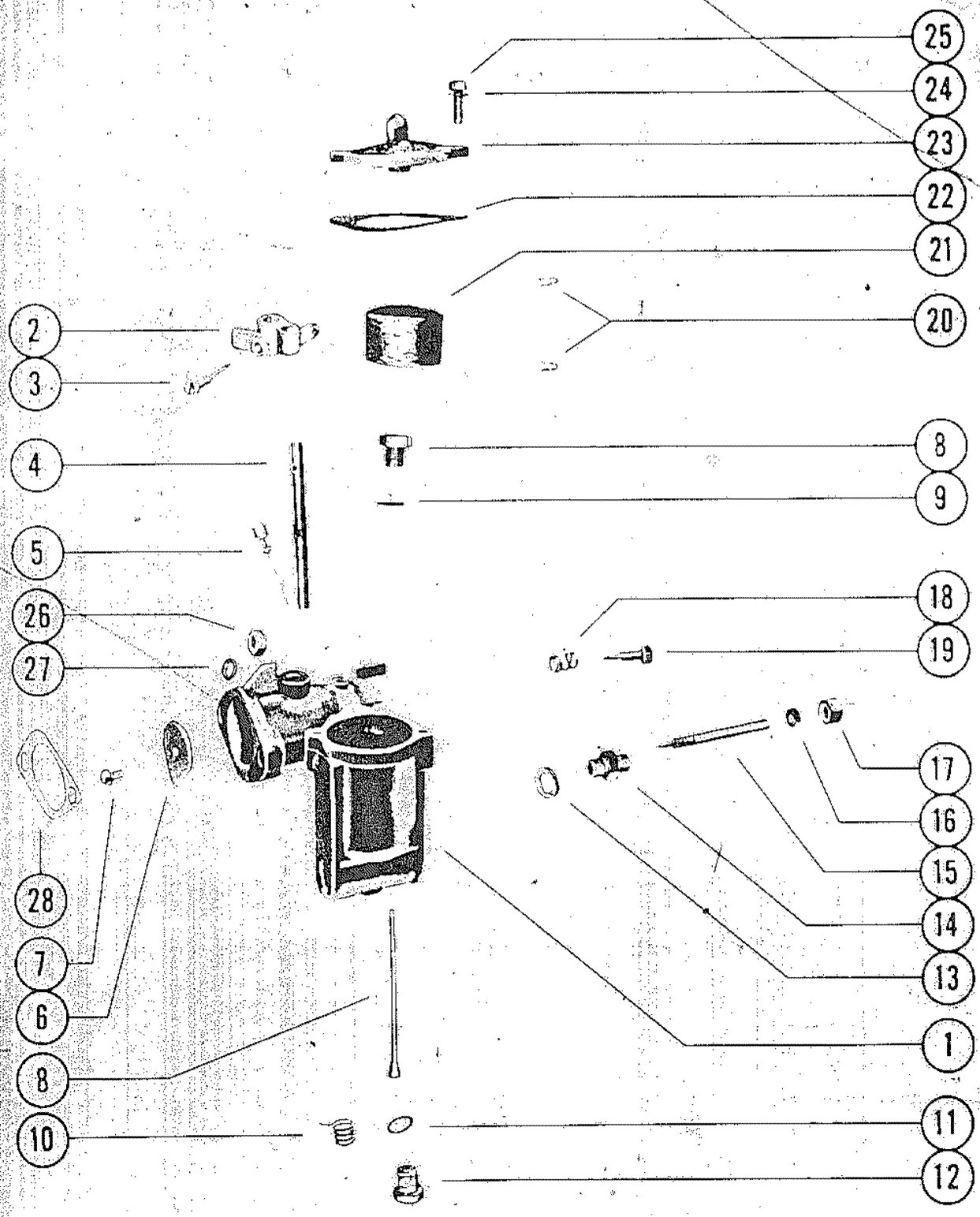
MAGNETO ASSEMBLY, COMPLETE (SCINTILLA)



MAGNETO ASSEMBLY, COMPLETE (SCINTILLA)

REF. NO.	PART NO.	SYM.	QTY.	DESCRIPTION
39	10-24620		1,1,1,,	SCREW, THROTTLE HANDLE ATTACHING - LONG
	10-22031		,,1,1	SCREW, THROTTLE HANDLE ATTACHING - LOG
40	13-22675		,,1,1	LOCKWASHER, HANDLE ATTACHING SCREW
41	23-23937		1,1,1,,	SPACER, THROTTLE CAM
	23-20618		,,1,1	SPACER, THROTTLE CAM
42	33-22805		1,1,1,,	SPARK PLUG
	33-22805		,,2,2	SPARK PLUG
-	24178		,,1,1	SUPPORT, CABLE
43	23-23945		,,1,1	BUSHING, IGNITION WIRE

CARBURETOR ASSEMBLY

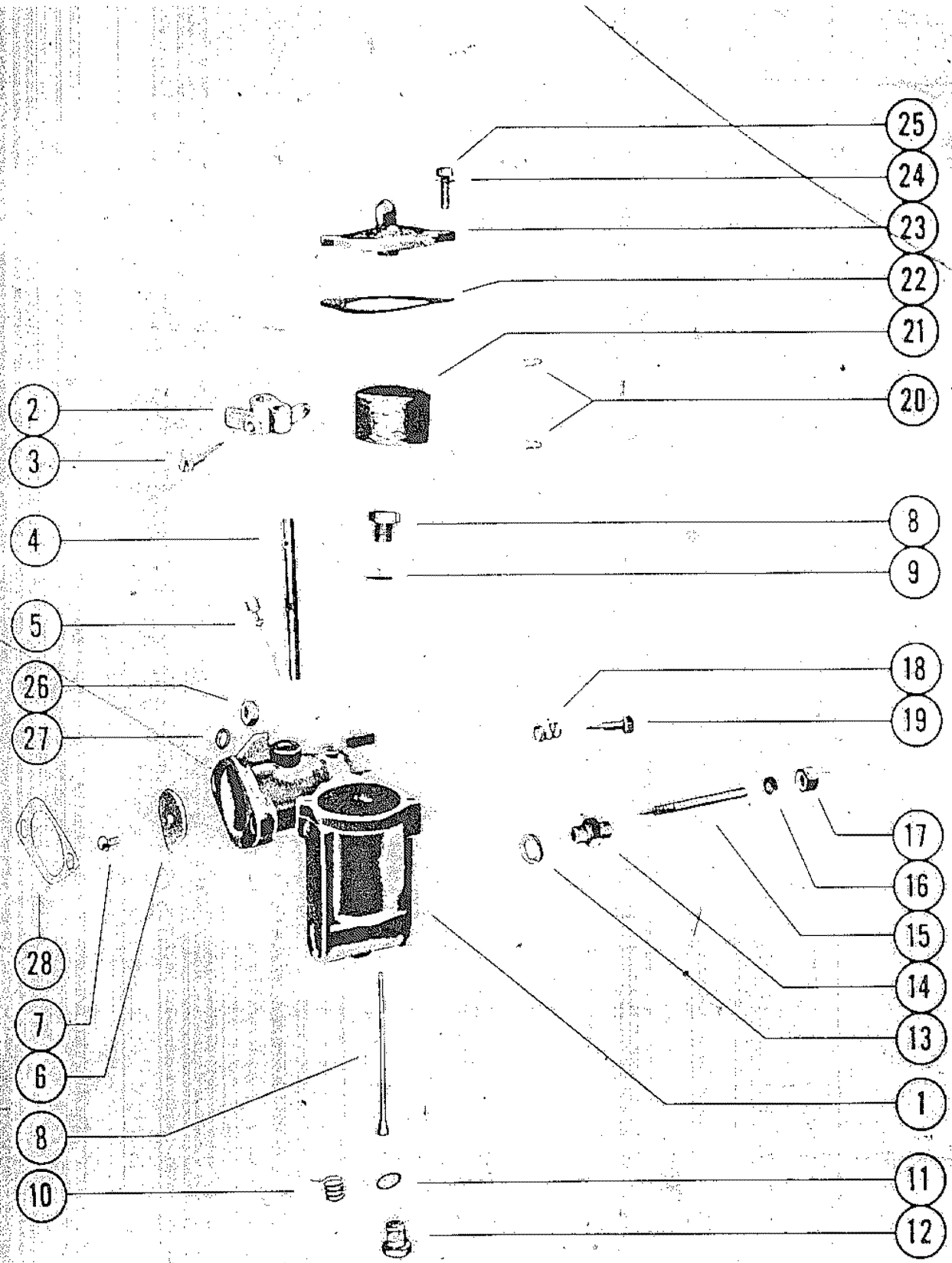


CARBURETOR ASSEMBLY

REF. NO.	PART NO.	SYM.	QTY.	DESCRIPTION
1	1312-578		1,1,1,1,,,	CARBURETOR ASSEMBLY (AJ-10B)
	1315-582		,,,,1,1,1,	CARBURETOR ASSEMBLY 9AJ-30A)
	1322-613		,,,,,,1	CARBURETOR ASSEMBLY (AJ-30B)
2	1399-97		1,1,1,1,1,	LEVER, THROTTLE STOP
3	10-20847		1,1,1,1,1,	SCREW, THROTTLE STOP LEVER
-	1399-536		1,1,1,1,,,	PIN, THROTTLE SHUTTER SHAFT STOP
4	1399-531		1,1,1,1,1,	SHAFT, THROTTLE
5	1399-526		1,1,1,1,1,	JET, IDLE
	27-23180		1,1,1,1,,,	GASKET, IDLE JET
6	1399-533		1,1,1,1,,,	SHUTTER, THROTTLE
	1399-699		,,,,1,1,1,	SHUTTER, THROTTLE
7	10-21471		1,1,1,1,1,	SCREW AND LOCKWASHER, THROTTLE SHUTTER
8	1399-521		1,1,1,1,,,	INLET NEEDLE AND SEAT
	1399-586		,,,,1,1,1,	INLET NEEDLE AND SEAT
9	27-23167		1,1,1,1,,,	GASKET, INLET VALVE SEAT
	27-23284		,,,,1,1,1,	GASKET, INLET VALVE SEAT
10	24-23191		1,1,1,1,1,	SPRING, THROTTLE SHAFT RETURN
11	27-23284		1,1,1,1,1,	GASKET, INLET VALVE CHANNEL PLUG
12	10-23030		1,1,1,1,,,	SCREW, INLET VALVE CHANNEL PLUG
	10-23285		,,,,1,1,1,	SCREW, INLET CALCE CHANNEL PLUG
13	27-20848		1,1,1,1,1,	GASKET, MAIN ADJUSTMENT SCREW GLAND
14	1399-94		1,1,1,1,1,	GLAND, MAIN ADJUSTMENT SCREW
15	10-23264		1,1,1,1,,,	SCREW, MAIN ADJUSTMENT
	10-23286		,,,,1,1,1,	SCREW, MAIN ADJUSTMENT
16	1399-108		1,1,1,1,1,	PACKING, MAIN ADJUSTMENT SCREW
17	11-20849		1,1,1,1,1,	NUT, MAIN ADJUSTMENT SCREW PACKING
18	24-20856		1,1,1,1,1,	SPRING, IDLE ADJUSTMENT
19	10-23179		1,1,1,1,,,	SCREW, IDLE ADJUSTMENT
	1399-619		,,,,1,1,1,	SCREW, IDLE ADJUSTMENT
20	18-21579		1,1,1,1,1,	COTTER PIN, FLOAT RETAINER
21	1399-570		1,1,1,1,1,	FLOAT, CARBURETOR
22	1399-99		1,1,1,1,1,	GASKET, FLOAT BOWL COVER
23	1399-598		1,1,1,1,,,	CPVER, FLOAT BOWL
	1399-585		,,,,1,1,1,	COVER, FLOAT BOWL
24	13-26995		2,2,2,2,2,	LOCKWASHER, FLOAT BOWL COVER SCREW
25	10-20854		2,2,2,2,,,	SCREW, FLOAT BOWL COVER
	10-20854		,,,,1,1,1,	SCREW, FLOAT BOWL COVER
-	10-22567		1,1,1,1,,,	SCREW, FLOAT BOWL DRAIN
-	27-23184		1,1,1,1,,,	GASKET, FLOAT BOWL DRAIN SCREW
-	19-20011		1,1,1,1,1,	WELCH PLUG
-	1399-95		,,,,3,3,3,	LEAD SHOT
-	1399-95		,,,,,,2	LEAD SHOT
26	11-20088		2,2,2,2,,,	NUT, CARBURETOR MOUNTING STUD

CONTINUED ON NEXT PAGE ➡

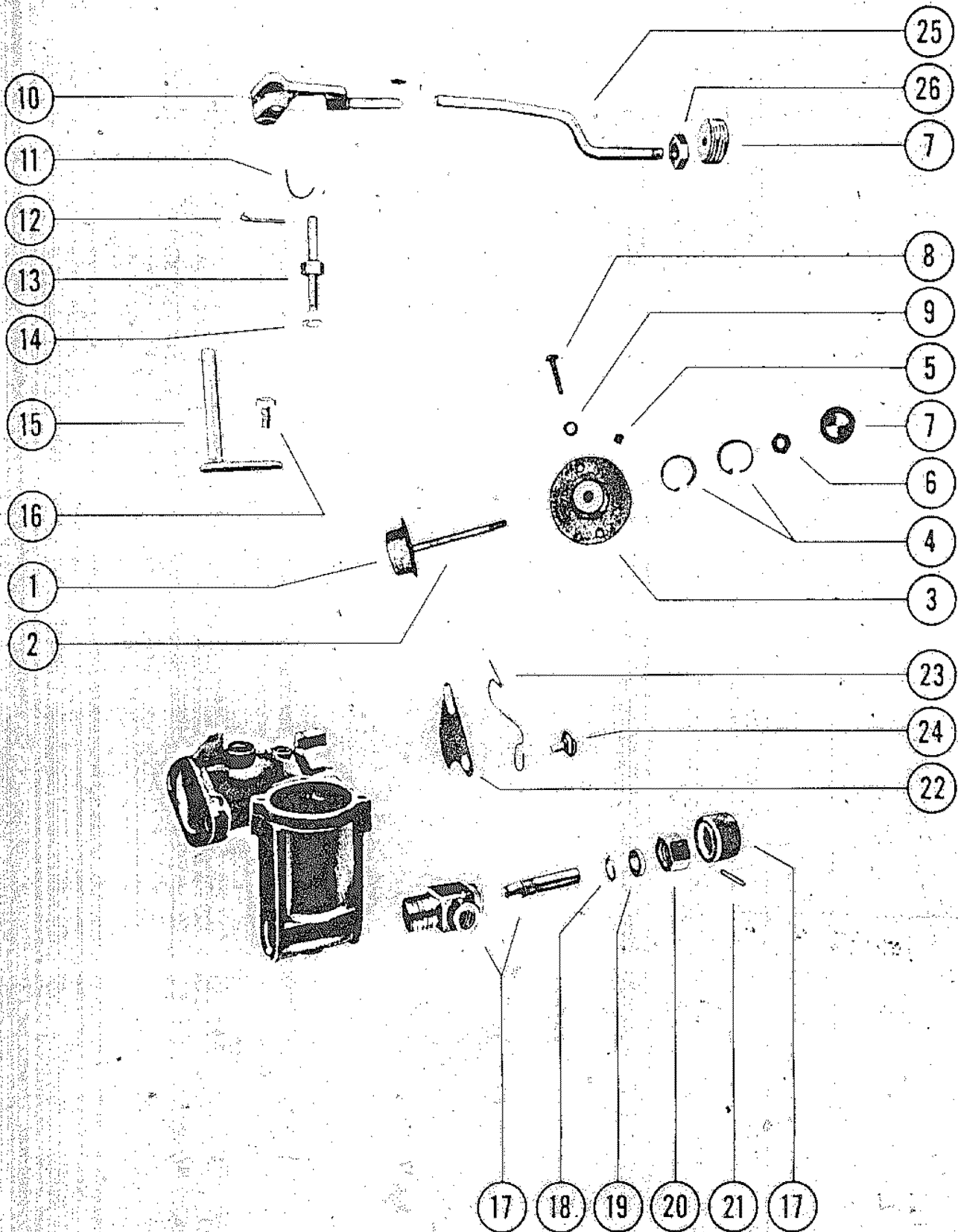
CARBURETOR ASSEMBLY



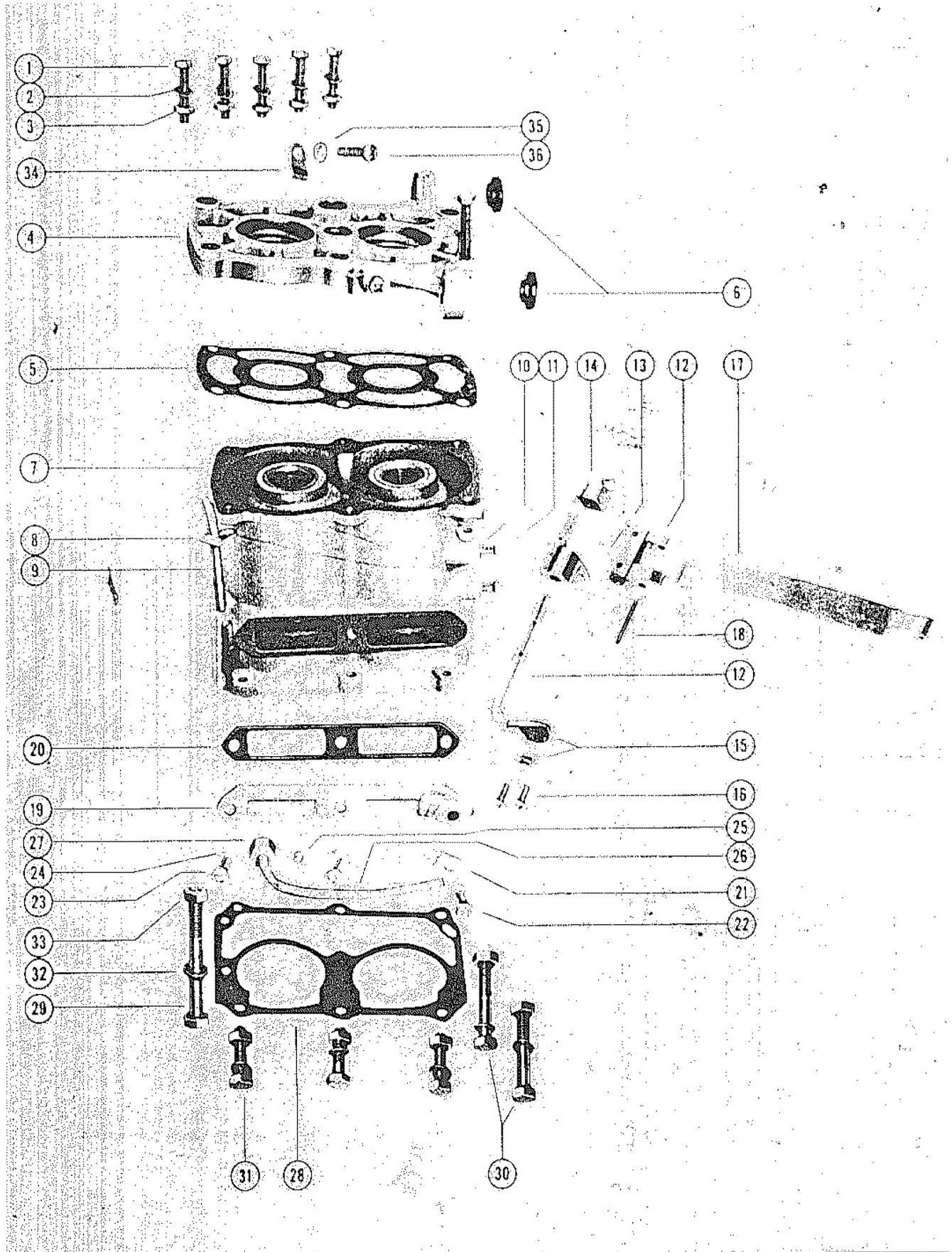
CARBURETOR ASSEMBLY

REF. NO.	PART NO.	SYM.	QTY.	DESCRIPTION
26	11-22433		,,,,2,2,2,	NUT, CARBURETOR MOUNTING STUD
	11-21825		,,,,,,2	NUT, CARBURETOR MOUNTING STUD
27	12-20583		2,2,2,2,2,	WASHER, CARBURETOR STUD
28	27-23199		1,1,1,1,,,	GASKET, CARBURETOR FLANGE
	27-22023		,,,1,1,1,	GASKET, CARBURETOR FLANGE

CHOKE ASSEMBLY (COMPLETE)



CYLINDER BLOCK ASSEMBLY

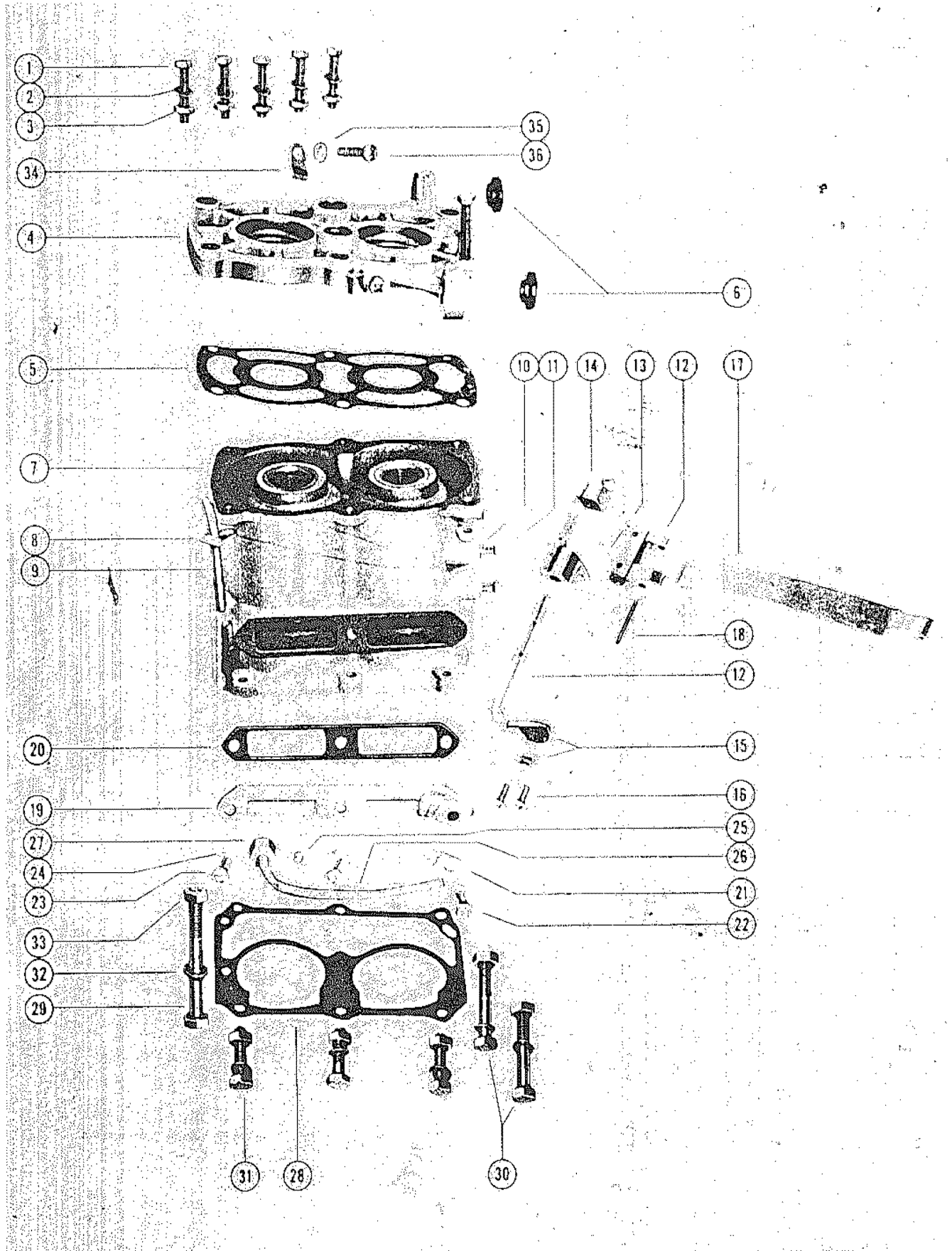


CYLINDER BLOCK ASSEMBLY

REF. NO.	PART NO.	SYM.	QTY.	DESCRIPTION
1	10-22387		6,6,6,6	SCREW, CYLINDER BLOCK COVER
2	12-20128		6,6,6,6	WASHER, CYLINDER BLOCK COVER SCREW
3	11-20645		6,6,6,6	NUT, CYLINDER BLOCK COVER SCREW
4	1004-410		1,1,1,1	COVER, CYLINDER BLOCK
5	27-22655		1,1,1,1	GASKET, CYLINDER BLOCK COVER
6	23-21717		2,2,2,2	BUSHING, CYLINDER BLOCK COVER (FRONT)
7	809-380A5		1,1,1,1	CYLINDER BLOCK ASSEMBLY 1
8	54-22577		1,1,1,1	CLIP, BLEEDER TUBE
9	32-22607		1,1,1,1	TUBE, BLEEDER, - CYLINDER BLOCK
-	19-21688		2,2,2,2	WELCH PLUG (1/2" DIAMETER)
-	19-22579		3,3,3,3	WELCH PLUG (3/8" DIAMETER)
10	13-26996		,,,3	LOCKWASHER, CONTROL BRACKET SCREW
11	10-22444		,,,3	SCREW, CONTROL BRACKET TO CYLINDER BLOCK
12	21000A1		,,,1	PIVOT AND LINK LEVER ASSEMBLY
13	17-22515		,,,2	PIN, ROLL - PIVOT AND LINK LEVER TO BRACKET
14	20995		,,,1	BRACKET, PIVOT AND LINK LEVER ASSEMBLY
15	54-22808		,,,1	CLAMP, CONTROL CABLE
16	10-21278		,,,2	SCREW, CONTROL CABLE CLAMP
17	24409		,,,1	LINK, CLUTCH CONTROL
18	17-24192		,,,1	PIN, ROLL - CLUTCH CONTROL LINK TO LEVER
-	10-22660		,,,1	SCREW, CRANKCASE TO CYLINDER BLOCK (3/4")
19	23142		1,1,1,1	PLATE, INTAKE COVER
	22608		,,,1	PLATE, INTAKE COVER
20	27-22656		1,1,1,1	GASKET, INTAKE COVER PLATE
21	54-22517		,,,1	CLIP, CONTROL CABLE GUIDE TUBE
22	10-22657		,,,1	SCREW, INTAKE COVER PLATE (LONG)
23	10-22444		3,3,3,3	SCREW, INTAKE COVER PLATE
	10-22444		,,,2	SCREW, INTAKE COVER PLATE
24	12-20128		3,3,3,3	WASHER, INTAKE COVER PLATE SCREW
25	22322		,,,1	SLEEVE, COMPRESSION
26	32-22585		,,,1	TUBING, CONTROL CABLE GUIDE
27	11-22645		,,,1	NUT, COMPRESSION
28	27-22518		1,1,1,1	GASKET, CRANKCASE TO CYLINDER BLOCK
29	10-22658		1,1,1,1	SCREW, CRANKCASE TO CYLINDER BLOCK (2 3/8")
30	10-22659		2,2,2,2	SCREW, CRANKCASE TO CYLINDER BLOCK (1 5/8")
	10-22659		,,,1	SCREW, CRANKCASE TO CYLINDER BLOCK (1 5/8")
31	10-20663		3,3,3,3	SCREW, CRANKCASE TO CYLINDER BLOCK (1")
32	12-20583		7,7,7,7	WASHER, CRANKCASE TO CYLINDER BLOCK SCREW
	12-20583		,,,6	WASHER, CRANKCASE TO CYLINDER BLOCK SCREW

CONTINUED ON NEXT PAGE ➡

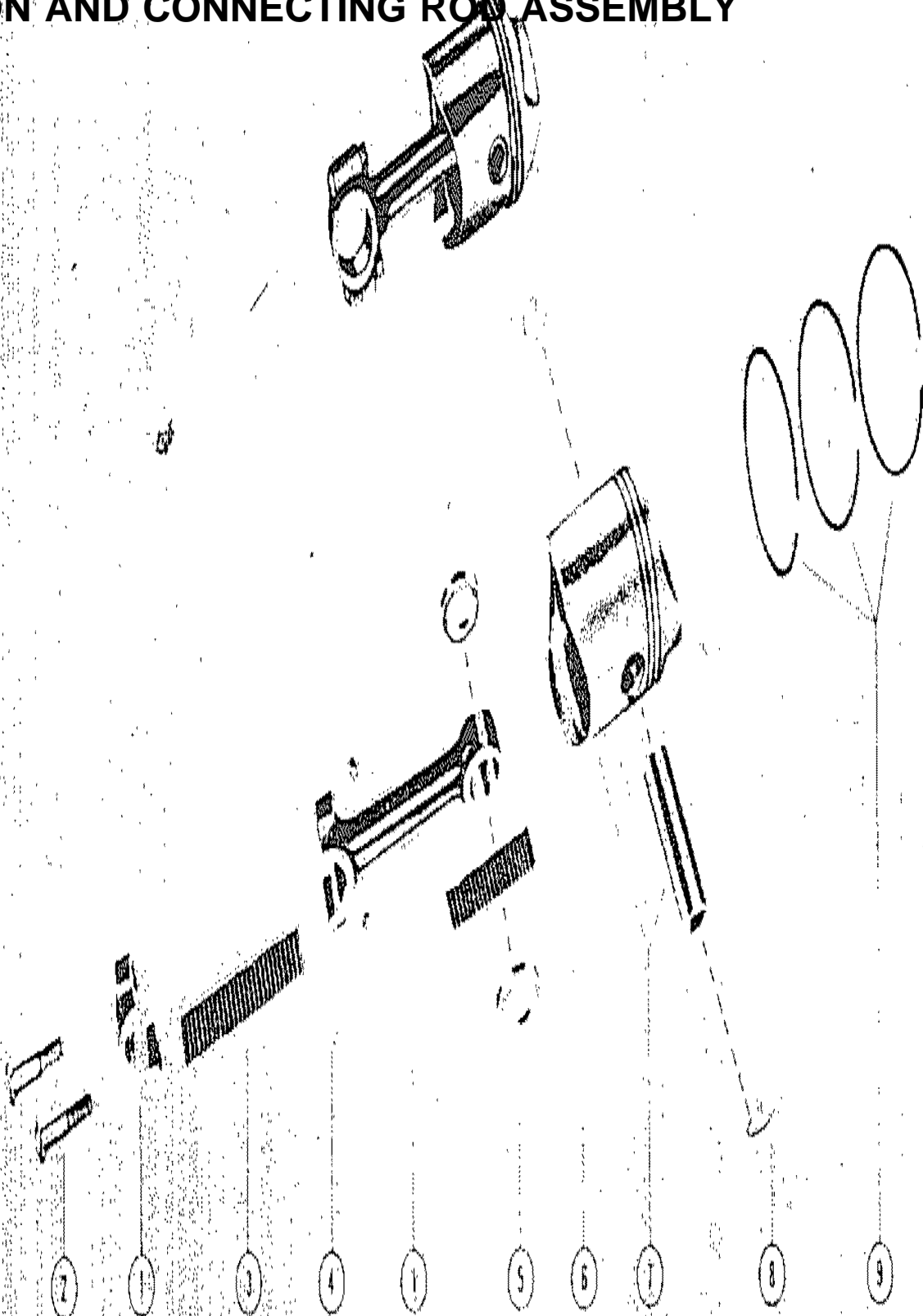
CYLINDER BLOCK ASSEMBLY



CYLINDER BLOCK ASSEMBLY

REF. NO.	PART NO.	SYM.	QTY.	DESCRIPTION
33	11-22433		6,6,6,	NUT, CRANKCASE TO CYLINDER BLOCK SCREW
	11-21825		,,6	NUT, CRANKCASE TO CYLINDER BLOCK SCREW
34	54-22595		2,2,2,2	CLIP, IGNITION WIRE
35	13-26996		2,2,2,2	LOCKWASHER, CLIP RETAINING SCREW
36	10-22654		2,2,2,2	SCREW, CLIP RETAINING

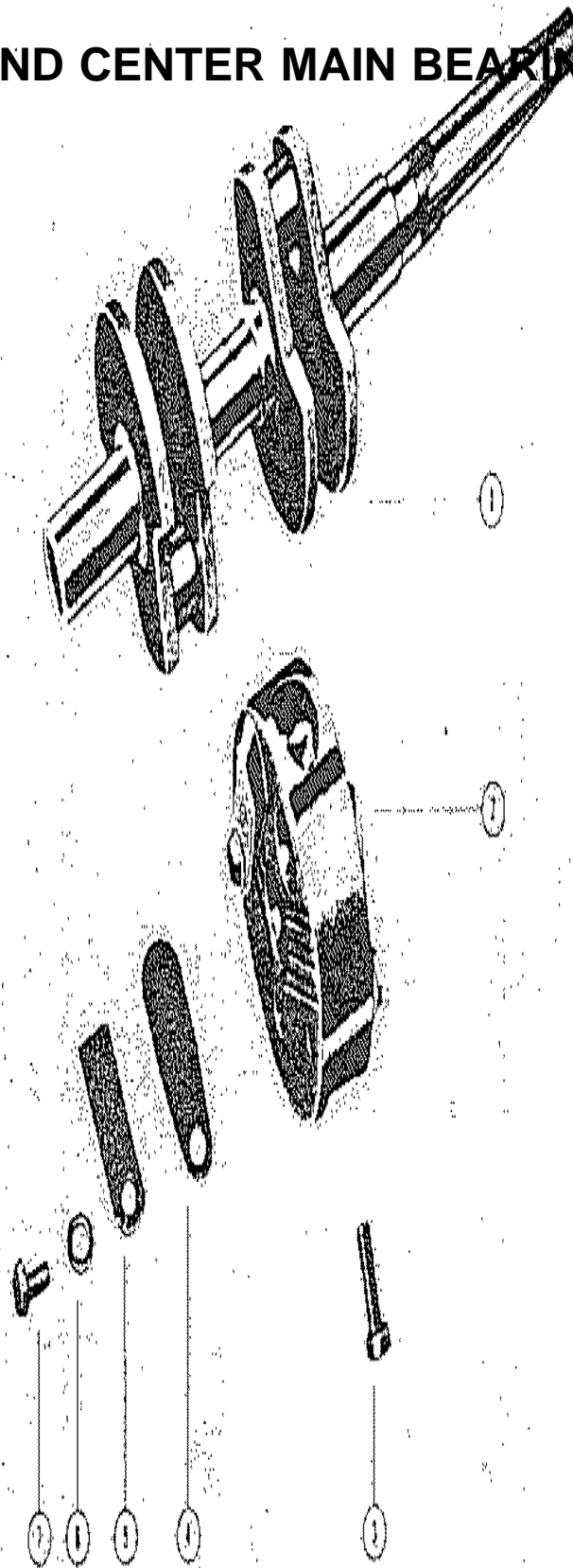
PISTON AND CONNECTING ROD ASSEMBLY



PISTON AND CONNECTING ROD ASSEMBLY

REF. NO.	PART NO.	SYM.	QTY.	DESCRIPTION
1	604-338A1		0	CONNECTING
	604-337A1		1	CONNECTING ROD ASSEMBLY
2	10-22391		2,2,2,2	SCREW, CONNECTING ROD
3	29-21663		28,28,28,2	NEEDLE BEARING, CRANKPIN
5	12-24667		2	WASHER, NEEDLE BEARING RETAINING
6	29-21667		20	NEEDLE BEARING, PISTON PIN
-	31-21664		1,1,1	ROLLER BEARING, PISTON PIN
7	710-489A1		1,1,1	PISTON AND PISTON PIN ASSEMBLY
	707-446A1		1	PISTON AND PISTON PIN ASSEMBLY
8	40-21666		2,2,2,2	LOCK RING, PISTON PIN
9	39-21665		3,3,3,3	PISTON RING
1	605-378A1		2,2,2	CONNECTING ROD ASSEMBLY
2	10-22590		4,4,4	SCREW, CONNECTING ROD
3	29-22591		46,46	NEEDLE BEARING, CRANKPIN
4	11-23118		4,4	NUT, CONNECTING ROD SCREW
	11-23117		4	NUT, CONNECTING ROD SCREW
	11-20565		4	NUT, CONNECTING ROD SCREW
-	14-23116		4	TAB WASHER, CONNECTING ROD SCREW
5	12-22592		4,4,4,4	WASHER, NEEDLE BEARING RETAINING
6	29-22591		34,34	NEEDLE BEARING, PISTON PIN
7	711-490A1		2,2	PISTON AND PISTON PIN ASSEMBLY
	703-379A1		2,2	PISTON AND PISTON PIN ASSEMBLY
8	40-22652		4,4,4,4	LOCK RING, PISTON PIN
9	39-22593		6,6,6,6	PISTON RING

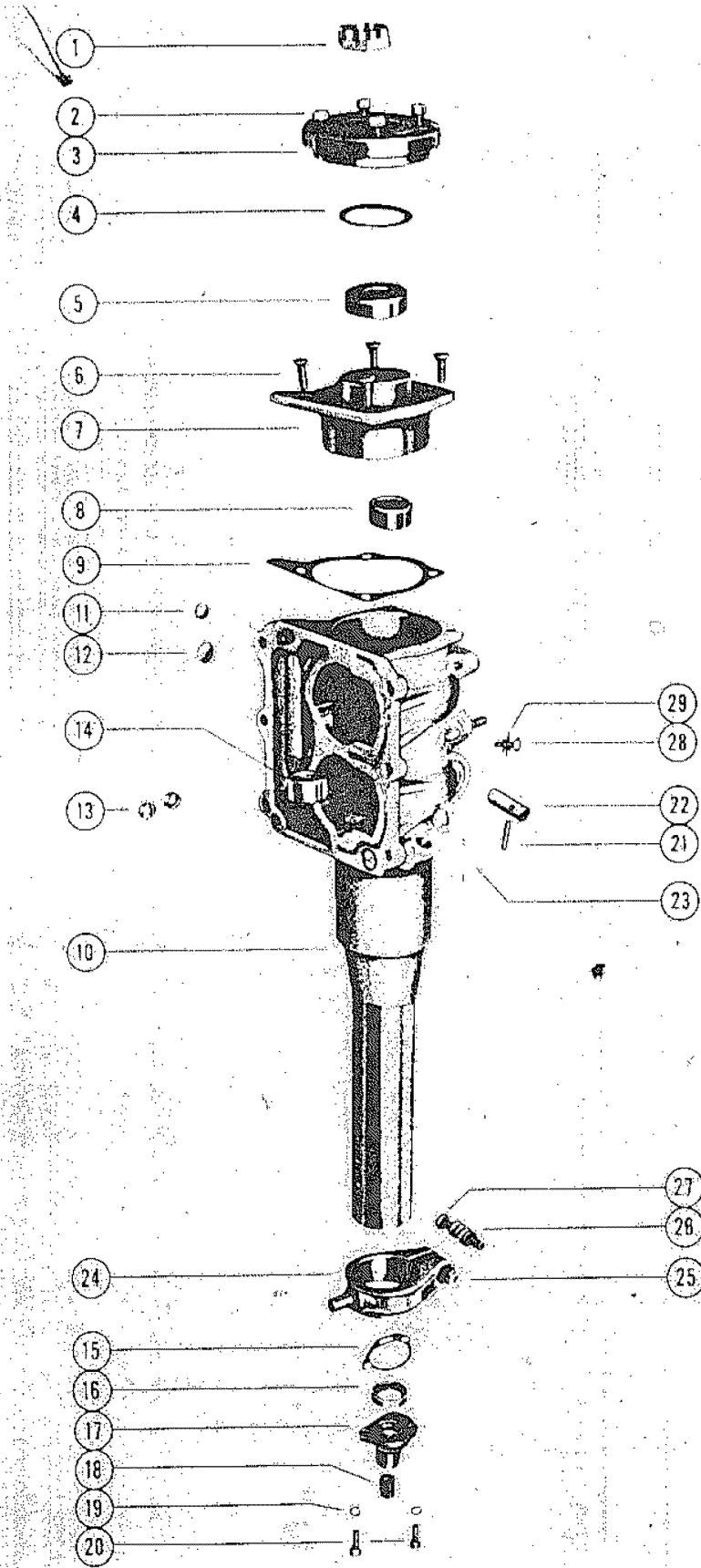
CRANKSHAFT AND CENTER MAIN BEARING ASSEMBLY



CRANKSHAFT AND CENTER MAIN BEARING ASSEMBLY

REF. NO.	PART NO.	SYM.	QTY.	DESCRIPTION
1	409-388		1,1,1,	CRANKSHAFT
-	506-266A1		1,1,1,	CENTER MAIN BEARING ASSEMBLY
2	511-386		,1	CENTER MAIN BEARING
	906-266		1,1,1,	CENTER MAIN BEARING
3	10-22587		1,1,1,	SCREW, CENTER MAIN BEARING CLAMPING
4	34-23087		1,1,1,	REED SET, MATCHED
5	34-21721		4,4,4,	PLATE, REED STOP
6	12-20128		4,4,4,	WASHER, REED PLATE SCREW
7	10-21296		4,4,4,	SCREW, REED PLATE

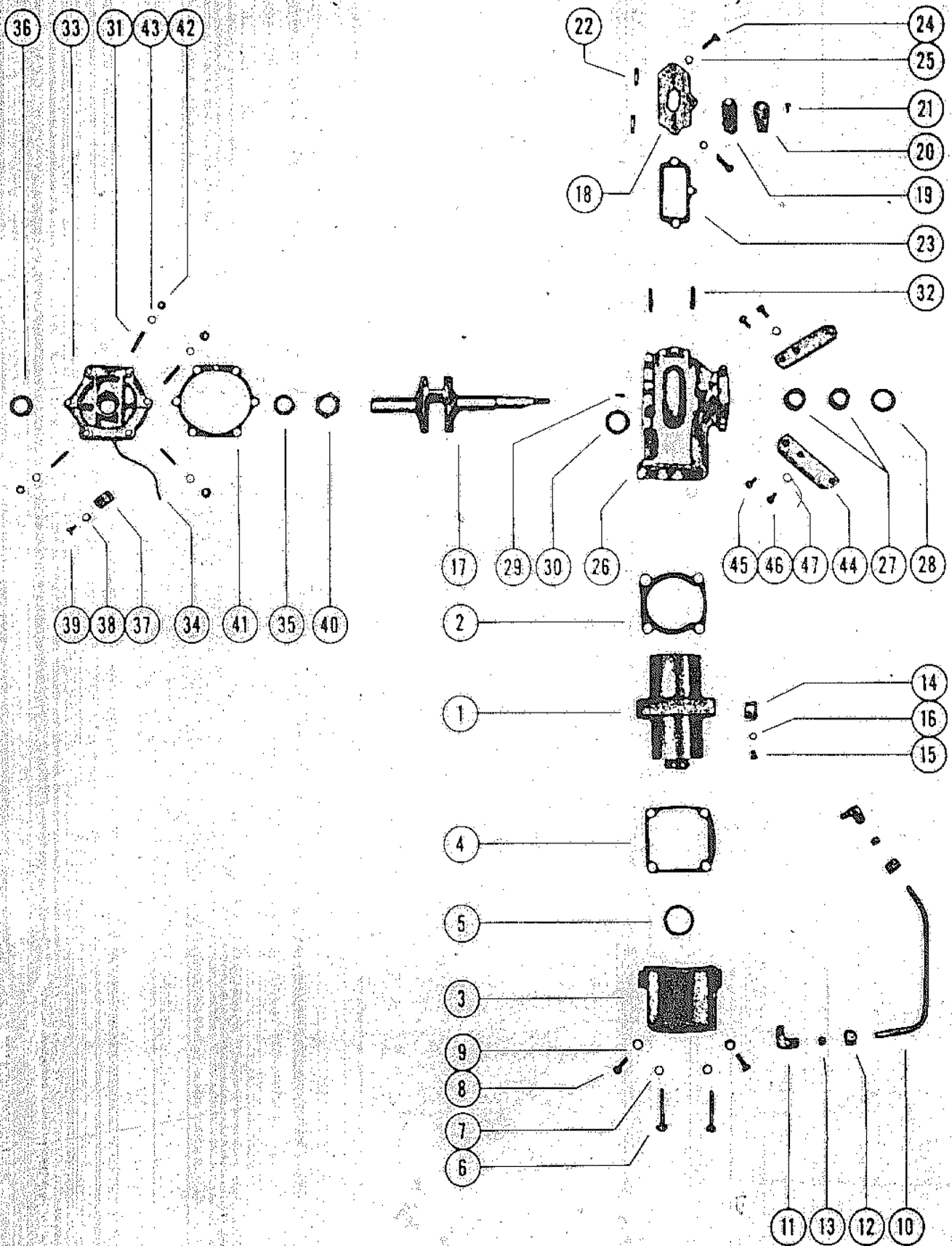
CRANKCASE AND BEARING HOUSING ASSEMBLY



CRANKCASE AND BEARING HOUSING ASSEMBLY

REF. NO.	PART NO.	SYM.	QTY.	DESCRIPTION
1	11-21707		1,1,1,1	NUT, BEARING LOCK
2	10-22651		4,4,4	SCREW, BEARING HOUSING CAP
3	1110-265		1,1,1,1	CAP, BEARING HOUSING
4	12-22646		1,1,1,1	WASHER, UPPER BEARING (DISHED THRUST)
5	30-21710		1,1,1,1	BEARING, BALL - UPPER BEARING HOUSING
-	15-20919		AR,AR	SHIM, BEARING TO HOUSING (.005)
6	10-22589		4,4,4	SCREW, UPPER BEARING HOUSING TO CRANKCASE
7	1121-414A2		1,1,1,1	BEARING HOUSING ASSEMBLY, UPPER
8	31-21638		1,1,1,1	BEARING, ROLLER - UPPER
	31-21711		1	BEARING, ROLLER - UPPER
9	27-21708		1,1,1,1	GASKET, UPPER BEARING HOUSING TO CRANKCASE
10	911-374A3		1,1,1,1	CRANKCASE ASSEMBLY
-	17-22642		2,2,2	PIN, GROOVE - CRANKCASE TO PIVOT TUBE
11	19-22579		1,1,1,1	WELCH PLUG (3/8")
12	19-21688		1,1,1,1	WELCH PLUG (1/2")
13	22-21290		2,2,2	PLUG, PIPE
14	31-22640		1,1,1,1	BEARING, ROLLER - CRANKCASE
15	27-21719		1,1,1,1	GASKET, WATER INLET CAP
16	26-22580		1,1,1,1	OIL SEAL, CRANKCASE
17	23103A1		1,1,1,1	WATER INLET CAP ASSEMBLY
	22582A1		1	WATER INLET CAP ASSEMBLY
18	23-22583		1	BUSHING, WATER INLET CAP
19	13-26996		2,2,2	LOCKWASHER, WATER INLET CAP SCREW
20	10-20411		2,2,2	SCREW, WATER INLET CAP
	10-20568		2	SCREW, WATER INLET CUP
21	17-22781		1,1,1,1	PIN, GROOVE - SHOCK ABSORBER TO CRANKCASE
	17-23526		1	PIN, GROOVE - SHOCK ABSORBER TO CRANKCASE
22	22777		1,1,1,1	SHOCK ABSORBER
23	16-21723		2,2,2	STUD, CARBURETOR MOUNTING
24	22726		1,1,1,1,1	RING, CO-PILOT
25	11-20890		1,1,1,1,1	NUT, CO-PILOT RING
26	24-22727		1,1,1,1,1	SPRING, CO-PILOT RING
27	10-22728		1,1,1,1,1	SCREW, CO-PILOT RING
28	10-20665		1,1,1,1	SCREW, CENTER MAIN BEARING LOCKING
29	13-21709		1,1,1,1	LOCKWASHER, CENTER MAIN BEARING LOCKING SCREW

CYLINDER, CRANKSHAFT AND CRANKCASE ASSEMBLY



CYLINDER, CRANKSHAFT AND CRANKCASE ASSEMBLY

1	810-458	1,1,1,1	CYLINDER
2	27-23036	1,1,1,1	GASKET, CYLINDER BASE
3	23037A1	1,1,1,1	WATER JACKET
4	27-23044	1,1,1,1	GASKET, WATER JACKET TO CYLINDER
5	27-21682	1,1,1,1	GASKET, WATER JACKET TO SPARK PLUG FLANGE
6	10-21365	4,4,4,4	SCREW, WATER JACKET TO CYLINDER
7	12-20583	4,4,4,4	WASHER, WATER JACKET TO CYLINDER SCREW
8	10-22485	2,2,2,2	SCREW, WATER JACKET TO PROTECTOR RIM
9	13-26992	2,2,2,2	LOCKWASHER, WATER JACKET TO PROTECTOR RIM
10	32-23065	1,1,1,1	PIPE, WATER OUTLET
11	22-21684	2,,,	ELBOW, WATER OUTLET PIPE
	22-21684	,1,1,1	ELBOW, WATER OUTLET PIPE
12	11-21113	2,2,2,2	NUT, COMPRESSION- WATER OUTLET PIPE
13	22-21685	2,2,2,2	SLEEVE, COMPRESSION- WATER OUTLET PIPE
-	19-21688	0	WELCH PLUG (1/2")
-	19-21688	1,1,1,	CLIP, IGNITION WIRE
14	54-22525	,,,1	CLIP, IGNITION WIRE
15	10-22560	,,,1	SCREW, IGNITION WIRE CLIP
16	13-26996	,,,1	LOCKWASHER, IGNITION WIRE CLIP SCREW
17	407-268	1,1,1,1	CRANKSHAFT
-	21657A1	1,1,1,1	REED VALVE BODY ASSEMBLY
18	21657	1,1,1,1	BODY, REED VALVE
19	34-21662	1,1,1,1	REED, INLET VALVE
20	34-25454	1,1,1,1	PLATE, REED STOP
21	10-21296	1,1,1,1	SCREW, REED ATTACHING
22	16-21676	2,2,2,2	STUD, REED STOP
23	27-21658	1,1,1,1	GASKET, REED VALVE BODY
24	10-28636	2,2,2,2	SCREW, REED VALVE BODY TO CRANKCASE
25	12-20583	2,2,2,2	WASHER, REED VALVE BODY TO CRANKCASE
26	909-302A3	1,1,1,1	CRANKCASE ASSEMBLY
27	31-21638	2,2,2,2	BEARING, ROLLER -UPPER
28	26-26782	1,1,1,1	OIL SEAL
29	17-20760	1,1,1,1	PIN, GROOVE
30	12-21736	1,1,1,1	WASHER, THRUST-UPPER