



PARTS CATALOG

215H AND 215E STERN DRIVE

SERIAL NUMBER

215E 1970-1972	2909035 THRU 2915034
215H 1970	2782203 THRU 2909034

TABLE OF CONTENTS:

DRIVE SHAFT HOUSING AND GEAR ASSEMBLY HYDRAULIC SHIFT	10
DRIVE SHAFT HOUSING AND GEAR ASSEMBLY ELECTRIC SHIFT(PAGE 1)	14
DRIVE SHAFT HOUSING AND GEAR ASSEMBLY ELECTRIC SHIFT(PAGE 2)	18
GEAR HOUSING ASSEMBLY, COMPLETE	20
GIMBAL HOUSING AND BELL HOUSING	6
GIMBAL RING AND STEERING LEVER	4
HYDRAULIC PUMP AND TRIM INDICATOR CONTROL PANEL	24
HYDRAULIC PUMP ASSEMBLY, COMPLETE	30
PARTS INDEX	32
TRANSOM PLATE	2
TRIM CYLINDERS AND HYDRAULIC HOSES	28

NOTE: *Indented description indicate that these parts are included in preceeding assembly.*

AR = As Required

NSS = Not Sold Separate

OPT = Optional

NS = Not Shown

THESE PARTS BOOKS/FICHE CARD ARE COPYRIGHTED AND MAY NOT BE DISTRIBUTED OR REPRODUCED IN ANY OTHER FORMAT BY ANYONE OTHER THAN MERCURY MARINE WITHOUT THE PRIOR WRITTEN CONSENT OF MERCURY MARINE.

REPLACEMENT PARTS ! WARNING !

Electrical, ignition and fuel system components on MerCruiser Engines and Stern Drives are designed and manufactured to comply with U.S. Coast Guard Rules and Regulations to minimize risks of fire or explosion. Use of replacement electrical, ignition or fuel system components, which do not comply to these rules and regulations, could result in a fire or explosion hazard and should be voided.

When servicing the electrical, ignition and fuel systems, it is extremely important that all components are properly installed and tightened. If not, any electrical or ignition component opening would permit sparks to ignite fuel vapors from fuel system leaks, if they existed.

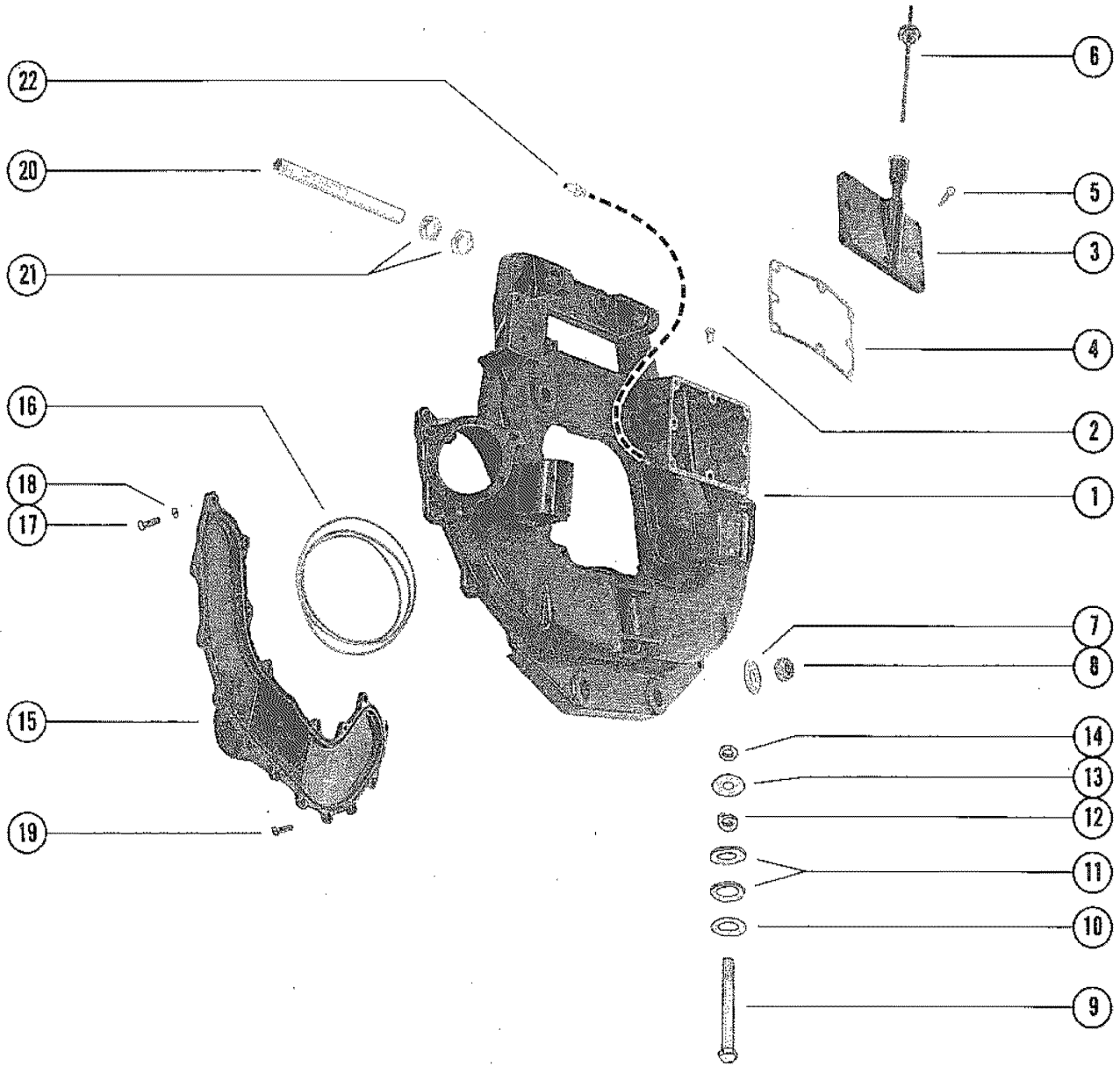
ENGINE MECHANICAL COMPONENTS

Many of the engine mechanical components are designed for marine applications. Unlike automotive engines, marine engines are subjected to extended periods of heavy load and wide- open-throttle operation, therefore, require heavy-duty components. Special marine engine parts have design and manufacturing specifications, which are required to provide long life and dependable performance. Marine engine parts also must be able to resist the corrosive action of salt or brackish water that will rust or corrode standard automotive parts within a short period of time.

Failure to use recommended Mercury Precision Parts OR Quicksilver service replacement parts can result in poor engine performance and/or durability, rapid corrosion of parts subjected to salt water and possibly complete failure of the engine.

Use of parts other than recommended service replacement parts will void the warranty on those parts which are damaged as a result of the use of other than recommended parts.

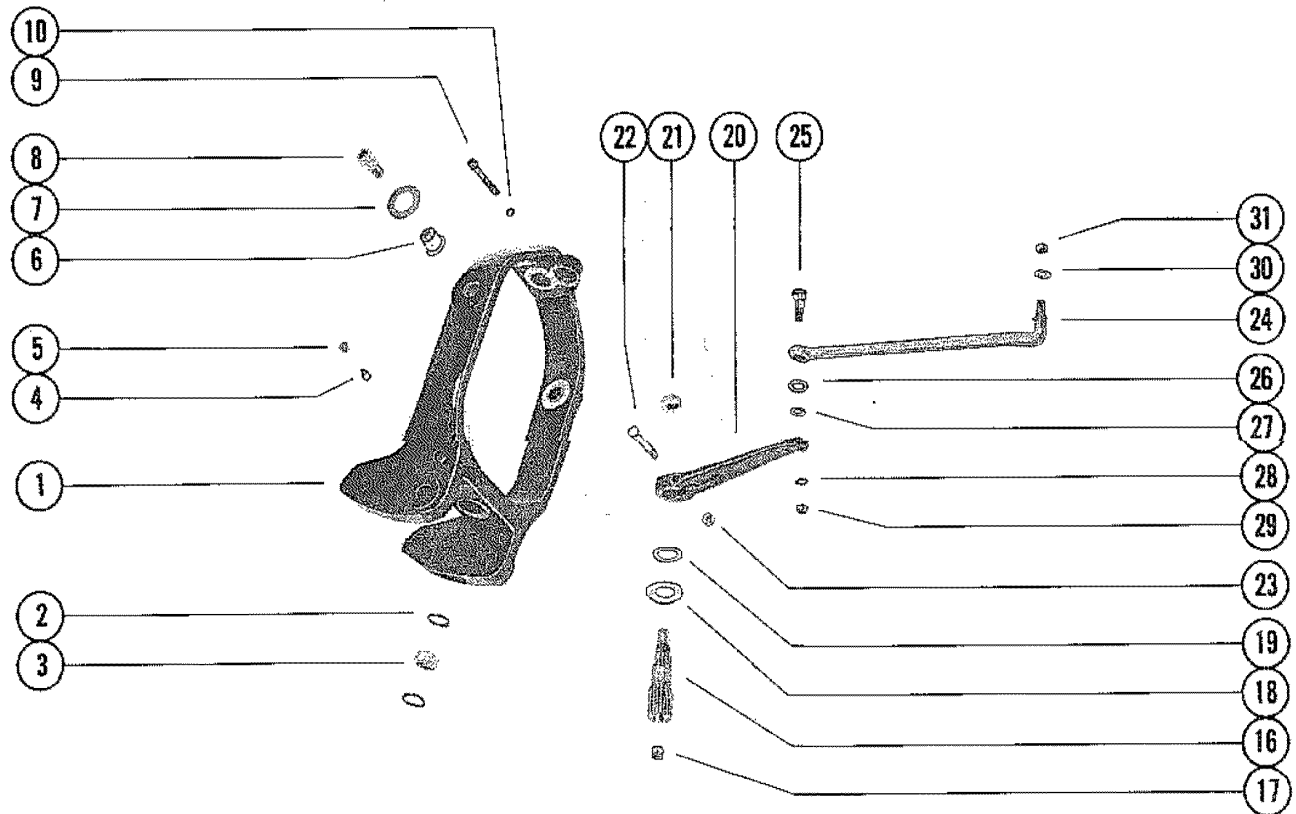
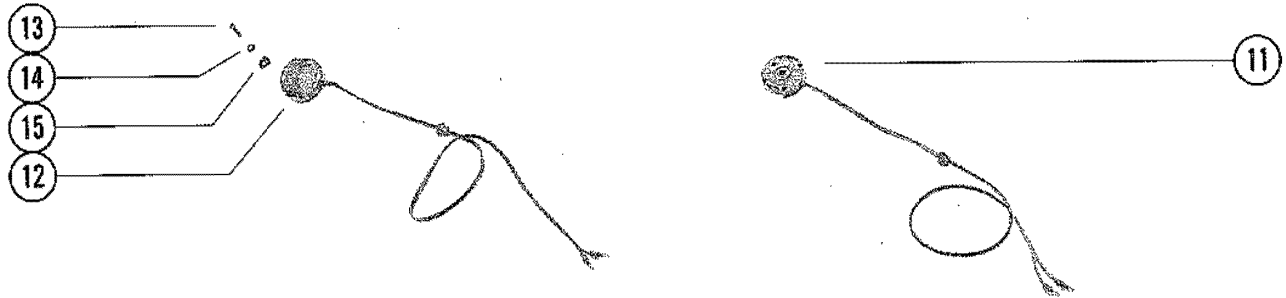
TRANSOM PLATE



TRANSOM PLATE

REF. NO.	PART NO.	SYM.	QTY.	DESCRIPTION
1	54092		1	PLATE, TRANSOM
2	22-47902		1	VENT, OIL RESERVIOR (TRANSOM PLATE)
3	54244A1		1	COVER ASSEMBLY, OIL RESERVIOR-TRANSOM PLATE
4	27-54307		1	GASKET, OIL RESERVIOR COVER
5	10-54523		8	SCREW, OIL RESERVIOR COVER TO TRANSOM PLATE (1")
6	55083		1	DIPSTICK, OIL LEVEL-OIL RESERVIOR
7	12-34876		8	WASHER, GIMBAL HOUSING TO TRANSOM PLATE STUD
8	11-35000		8	NUT, HOUSING TO TRANSOM PLATE STUD
9	10-47467		2	SCREW, TRANSOM PLATE TO FLYWHEEL HOUSING (5 1/2")
10	12-54250		2	WASHER, TRANSOM PLATE SCREW (1 1/8" I.D.)
11	12-47466		4	WASHER, FIBER-TRANSOM PLATE SCREW
12	13-34846		2	LOCKWASHER, TRANSOM PLATE SCREW (DOUBLE WIND)
13	12-33171		2	WASHER, TRANSOM PLATE SCREW (41/64" I.D.)
14	11-22339		2	NUT, TRANSOM PLATE SCREW
15	54234		1	COVER, EXHAUST
16	55897		1	SEAL, EXHAUST COVER
17	10-26065		15	SCREW, EXHAUST COVER TO TRANSOM PLATE (1")
18	11-29250		15	NUT, EXHAUST COVER SCREW
19	10-24234		2	SCREW, EXHAUST COVER TO TRANSOM PLATE-BOTTOM (1")
20	32-35015		1	TUBE, CABLE GUIDE
21	11-37984		1	NUT, JAM-CABLE GUIDE TUBE
22	22-34982		1	CONNECTOR, TRANSOM PLATE (OIL HOSE)
-	37-39395		1	DECAL, SERIAL NUMBER

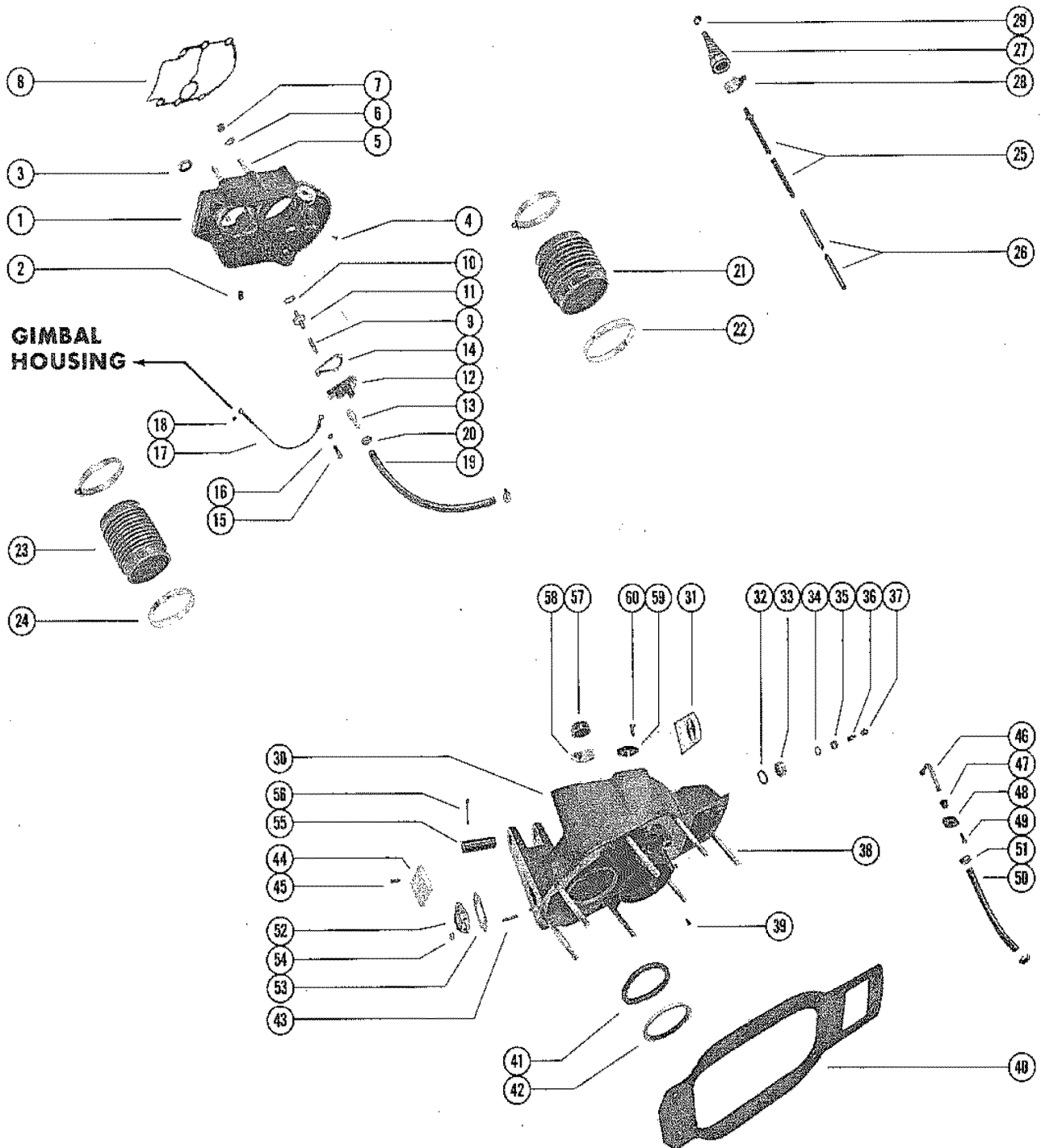
GIMBAL RING AND STEERING LEVER



GIMBAL RING AND STEERING LEVER

REF. NO.	PART NO.	SYM.	QTY.	DESCRIPTION
1	54394A2		1	GIMBAL RING ASSEMBLY
2	26-54927		2	OIL SEAL, GIMBAL RING
3	31-54928		1	ROLLER BEARING, GIMBAL RING (SWIVEL PIN)
4	22-23612		1	FITTING GREASE-GIMBAL RING
5	29359		1	LUBRICAP, GIMBAL RING GREASE FITTING
6	23-54002		2	BUSHING, GIMBAL RING (HINGE PIN)
7	12-54019		2	WASHER, ANTI-GALLING-BELL HOUSING (HINGE PIN)
8	17-54003		2	PIN, HINGE-GIMBAL RING TO HOUSING (6POINT SOCKET)
	17-59812		2	PIN, HINGE-GIMBAL RING TO HOUSING (12 POINT SOCKET)
9	10-45833		1	SCREW, UPPER SWIVEL SHAFT RETAINING-GIMBAL RING (2 1/2")
10	12-20546		1	WASHER, UPPER SWIVEL SHAFT RETAINING SCREW
11	56683A2		1	SWITCH ASSEMBLY, TRIM LIMIT (PORT SIDE)
12	56683A1		1	SENDER ASSEMBLY, TRIM INDICATOR (STARBOARD SIDE)
13	10-37978		4	SCREW, TRIM SENDER AND SWITCH TO GIMBAL RING (3/4")
14	13-26996		4	LOCKWASHER, TRIM SENDER AND SWITCH SCREW
15	57008		4	RETAINER, TRIM SENDER AND SWITCH SCREW
16	54404		1	SHAFT, UPPER SWIVEL-GIMBAL RING TO GIMBAL HOUSING
17	22-32561		1	PLUG, PIPE-UPPER SWIVEL SHAFT
18	12-54026		1	WASHER, UPPER SWIVEL SHAFT (2" O.D.)
19	12-54027		1	WASHER, UPPER SWIVEL SHAFT (1 5/8" O.D.)
20	54666		1	LEVER, STEERING-UPPER SWIVEL SHAFT
21	11-25599		1	NUT, STEERING LEVER TO UPPER SWIVEL SHAFT
22	10-32995		1	SCREW, STEERING LEVER TO UPPER SWIVEL SHAFT (2")
23	11-20696		1	NUT, STEERING LEVER SCREW
24	35431A1		1	LINK ROD ASSEMBLY, STEERING
25	10-54488		1	BOLT, LINK ROD TO STEERING LEVER
26	12-34966		1	WASHER, NYLON-LINK ROD BOLT
27	13-54667		1	WASHER, WAVE-LINK ROD BOLT
28	12-20086		1	WASHER, LINK ROD BOLT
29	11-20509		1	NUT, LINK ROD BOLT
30	12-20086		1	WASHER, LINK ROD
31	11-20509		1	NUT, LINK ROD

GIMBAL HOUSING AND BELL HOUSING

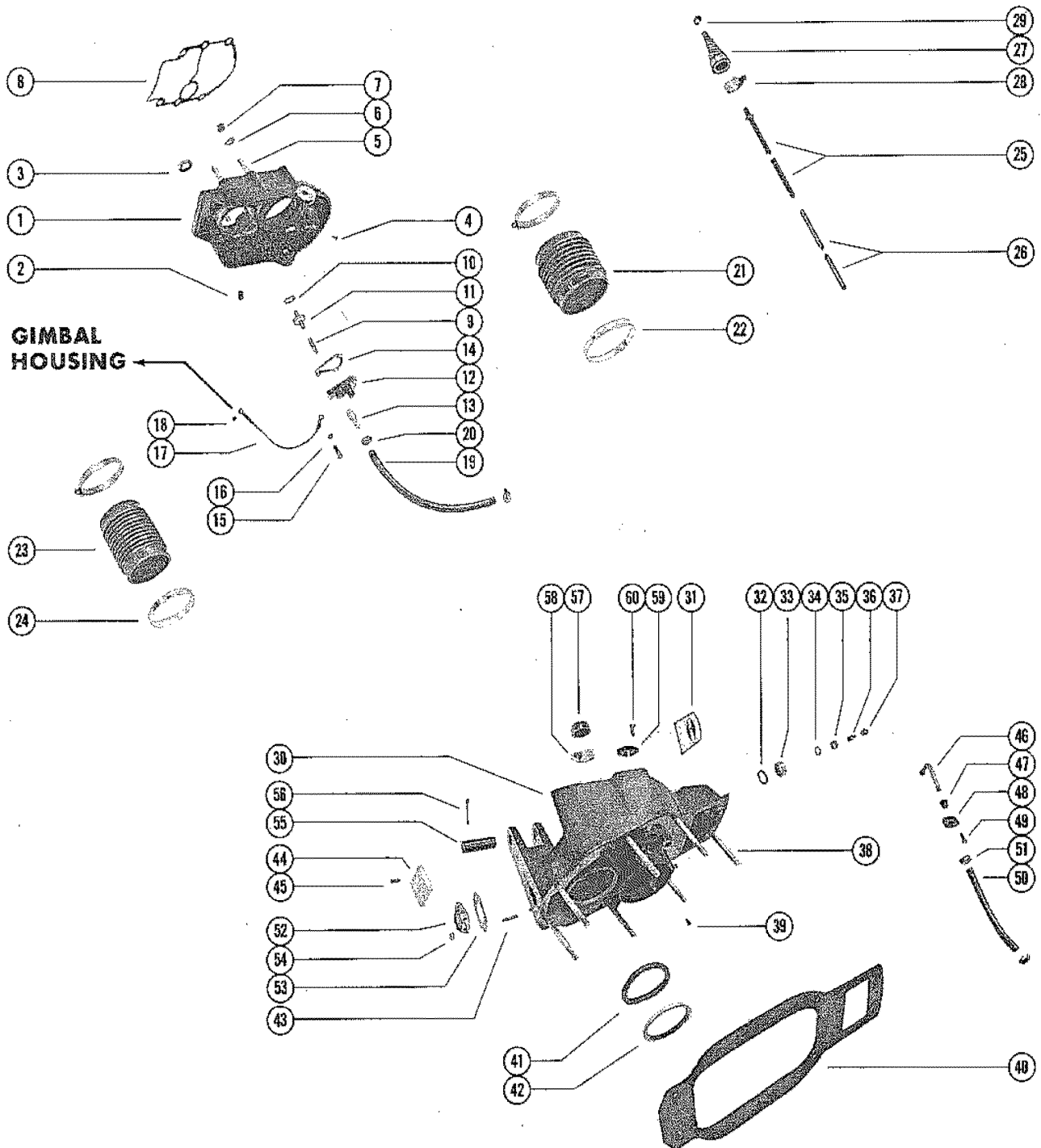


GIMBAL HOUSING AND BELL HOUSING

REF. NO.	PART NO.	SYM.	QTY.	DESCRIPTION
1	53934A3		1	BELL HOUSING ASSEMBLY HYDRAULIC SHIFT
2	22-32803		1	PLUG, PIPE-BELL HOUSING HYDRAULIC SHIFT
3	26-48443		1	OIL SEAL, BELL HOUSING HYDRAULIC SHIFT
4	10-25612		4	SCREW, DRIVE-EXHAUST FLANGE (BELL HOUSING) HYDRAULIC SHIFT
5	16-54011		6	STUD, BELL HOUSING TO DRIVE SHAFT HOUSING (3 1/4") HYDRAULIC SHIFT
1	53934A2		1	BELL HOUSING ASSEMBLY ELECTRIC SHIFT
3	26-48443		1	OIL SEAL, BELL HOUSING ELECTRIC SHIFT
4	10-25612		4	SCREW, DRIVE-EXHAUST FLANGE (BELL HOUSING) ELECTRIC SHIFT
5	16-57418		6	STUD, BELL HOUSING TO DRIVE SHAFT HOUSING (5 1/4") ELECTRIC SHIFT
6	12-54012		6	WASHER, BELL HOUSING STUD
7	11-35000		6	NUT, BE LL HOUSING STUD
8	27-54014		1	GASKET, BELL HOUSING TO DRIVE SHAFT HOUSING
9	24-48442		1	SPRING, TENSION-OIL RELEASE CHECK VALVE
10	25-48452		1	QUAD RING, OIL RELEASE CHECK VALVE
11	20-48219		1	CHECK VALVE, OIL RELEASE
12	54170A1		1	COVER ASSEMBLY, CHECK VALVE GUIDE
13	22-34982		1	CONNECTOR, CHECK VALVE GUIDE COVER
14	27-54021		1	GASKET, CHECK VALVE GUIDE COVER
15	10-36137		3	SCREW, CHECK VALVE COVER TO BELL HOUSING (1")
16	13-26992		3	LOCKWASHER, CHECK VALVE GUIDE COVER SCREW
17	57292		1	JUMPER CABLE, GIMBAL HOUSING TO CHECK VALVE GUIDE COVER
18	10-47225		1	SCREW, JUMPER CABLE
19	32-34423A1		1	HOSE, OIL-BELL HOUSING TO GIMBAL HOUSING (12 5/8")
20	54-54428		2	CLAMP, OIL HOSE TO BELL HOUSING AND GIMBAL HOUSING
21	36223A1		1	BELLOWS ASSEMBLY, UNIVERSAL JOINT
22	54-31765		2	CLAMP,BELLOWS TO GIMBAL HOUSING AND BELL HOUSING
23	54406		1	BELLOWS, EXHAUST
24	54-38889		2	CLAMP, EXHAUST BELLOWS ATTACHING
25	57842A2		1	SHAFT ASSEMBLY, CRANKSHIFT ELECTRIC SHIFT
26	32-55496A1		1	TUBE ASSEMBLY, CRANKSHIFT SHAFT ELECTRIC SHIFT
27	31659		1	BELLOWS, CRANKSHIFT SHAFT ELECTRIC SHIFT
28	54-31766		1	CLAMP, BELLOWS ATTACHING-LARGE END ELECTRIC SHIFT
29	54-38863		1	CLAMP, BELOWS ATTACHING-SMALL END ELECTRIC SHIFT
30	53979A1		1	GIMBAL HOUSING ASSEMBLY
31	56038		1	EMBLEM, GIMBAL HOUSING
32	26-31783		1	OIL SEAL, LOWER GIMBAL HOUSING ROLER BEARING
	26-31783		1	OIL SEAL, LOWER GIMBAL HOUSING ROLLER BEARING
33	31-54043		1	BEARING, ROLLER-GIMBAL HOUSING (LOWER)
34	26-54925		1	OIL SEAL, UPPER GIMBAL HOUSING ROLLER BEARING

CONTINUED ON NEXT PAGE ➡

GIMBAL HOUSING AND BELL HOUSING

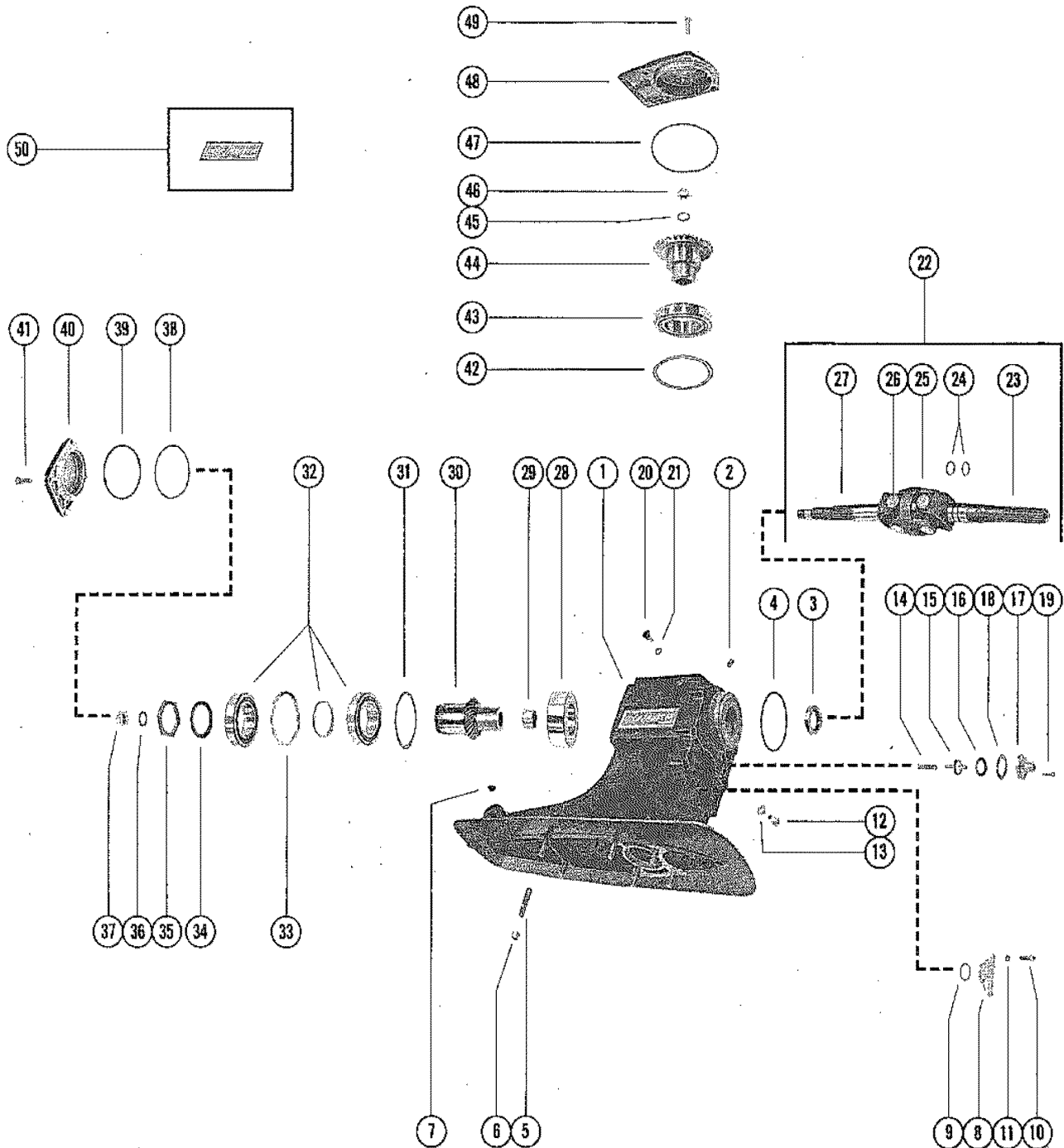


GIMBAL HOUSING AND BELL HOUSING

REF. NO.	PART NO.	SYM.	QTY.	DESCRIPTION
35	31-21145		1	BEARING, ROLLER-GIMBAL HOUSING (UPPER)
36	22-23612		1	FITTING, GREASE-GIMBAL HOUSING
37	29359		1	LUBRICAP, GIMBAL HOUSING GREASE FITTING
38	16-57988		8	STUD, GIMBAL HOUSING TO TRANSOM PLATE (5 3/8")
39	10-25612		9	SCREW, DRIVE-EXHAUST FLANGE (GIMBAL HOUSING)
40	27-54395		1	GASKET, GIMBAL HOUSING TO TRANSOM
41	25-54521		1	"O" RING, GIMBAL HOUSING
42	54068		1	PILOT RING, GIMBAL HOUSING
43	16-56766		2	STUD, GIMBAL HOUSING TO HYDRALIC CONNECTOR (1 2/8")
44	34762A1		1	PLATE ASSEMBLY, INHIBITOR-GIMBAL HOUSING
45	10-34763		2	SCREW, INHIBITOR PLATE TO GIMBAL HOUSING (3/4")
46	32-54392		1	TUBE, OIL-GIMBAL HOUSING
49	10-28636		2	SCREW, COVER TO GIMBAL HOUSING (3/4")
50	32-34423A1		1	HOSE, OIL-GIMBAL HOUSING TO TRANSOM PLATE (7 3/4")
51	54-54428		2	CLAMP, OIL HOSE TO GIMBAL HOUSING AND TRANSOM PLATE
52	47347		1	CONNECTOR, HYDRAULIC-GIMBAL HOUSING
53	27-47644		1	GASKET, HYDRAULIC CONNECTOR
54	11-35888		2	NUT, HYDRAULIC CONNECTOR STUD
55	17-54052		1	PIN, SWIVEL-GIMBAL HOUSING TO GIMBAL RING (LOWER)
56	18-54929		1	COTTER PIN,RETAINING-LOWER SWIVEL PIN
57	57637		1	CAP, SEALING-GIMBAL HOUSING HYDRAULIC SHIFT
58	54-31766		1	CLAMP, SEALING CAP TO GIMBAL HOUSING HYDRAULIC SHIFT
59	57322		1	COVER, RETAINING-GIMBAL HOUSING
60	10-28636		2	SCREW, RETAINING COVER TO GIMBAL HOUSING (3/4")

DRIVE SHAFT HOUSING AND GEAR ASSEMBLY HYDRAULIC SHIFT

HYDRAULIC SHIFT



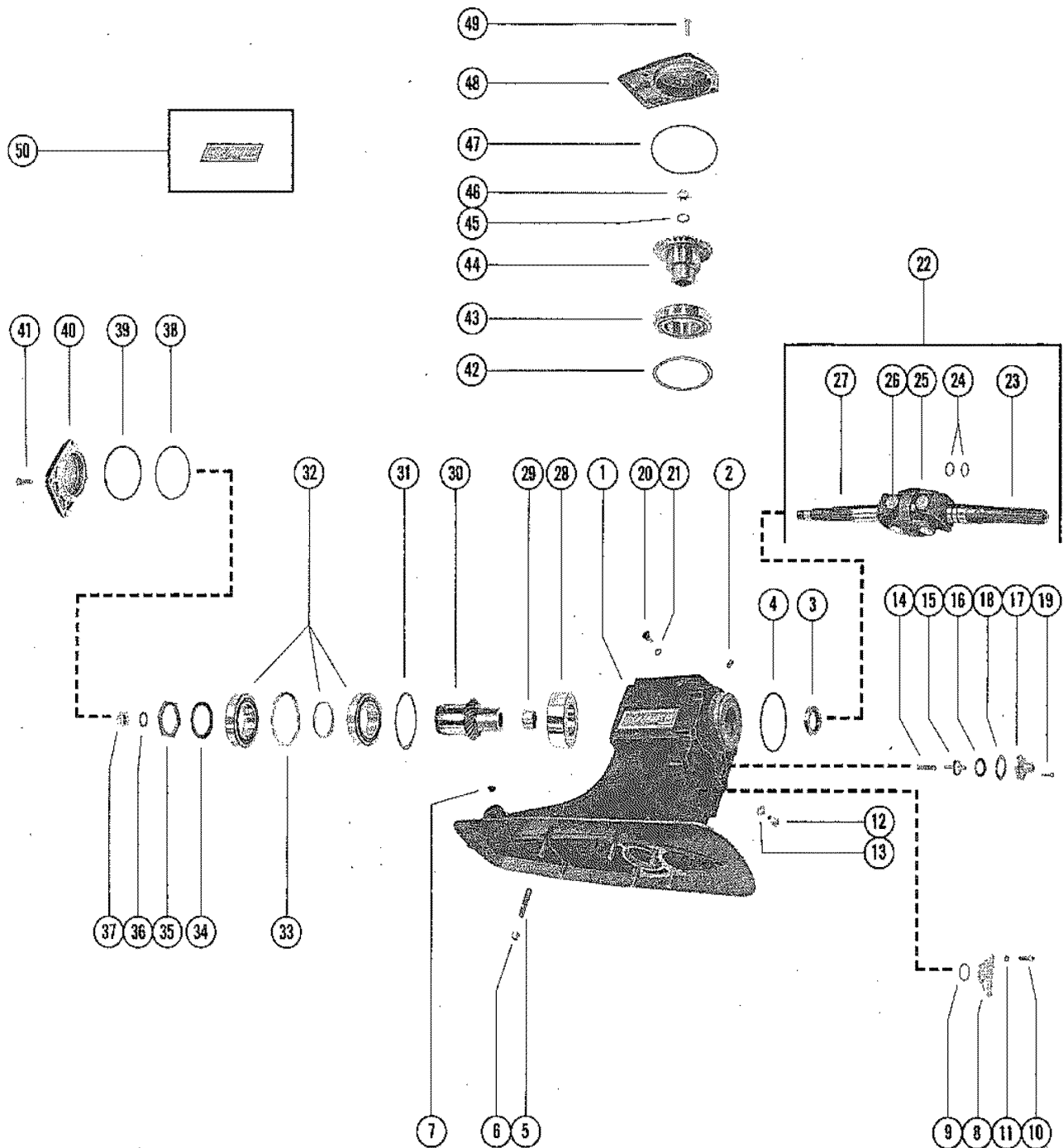
DRIVE SHAFT HOUSING AND GEAR ASSEMBLY HYDRAULIC SHIFT

REF. NO.	PART NO.	SYM.	QTY.	DESCRIPTION
1	1571-3766A1		1	DRIVE SHAFT HOUSING ASSEMBLY
2	10-21934		1	SCREW, SET-DRIVE SHAFT HOUSING
3	26-38105		1	OIL SEAL, DRIVE SHAFT HOUSING
4	25-32068		1	"O" RING, DRIVE SHAFT HOUSING
5	16-54674		6	STUD, DRIVE SHAFT HOUSING TO GEAR HOUSING (2 1/4")
6	11-34933		6	NUT, DRIVE SHAFT HOUSING STUD
7	19-47579		1	PLUG, TRIM TAP HOLE-DRIVE SHAFT HOUSING
8	57745		1	COVER, PLUG-DRIVE SHAFT HOUSING
9	25-47632		1	"O" RING, PLUG COVER
10	10-22486		3	SCREW, PLUG COVER TO DRIVE SHAFT HOUSING (7/8")
11	13-22773		3	LOCKWASHER, PLUG COVER SCREW
12	10-28634		1	SCREW, VENT-DRIVE SHAFT HOUSING
13	12-20260		1	WASHER, SEALING-VENT SCREW
14	24-48442		1	SPRING, TENSION-OIL RELEASE CHECK VALVE
15	20-48219		1	CHACK VALVE, OIL RELEASE
16	25-48452		1	QUAD RING, OIL RELEASE CHECK VALVE
17	54168		1	GUIDE, CHECK VALVE
18	278-54020		1	GASKET, CHECK VALVE GUIDE
19	10-2523		3	SCREW, CHECK VALVE GUIDE TO DRIVE SHAFT HOUSING (3/4")
20	23-54349		2	BUSHING, PLUG-DRIVE SHAFT HOUSING
21	12-54351		2	WASHER, SEALING-PLUG BUSHING
22	54397A3		1	UNIVERSAL JOINT ASSEMBLY, PINION GEAR
23	57749A1		1	YOKE ASSEMBLY, UNIVERSAL JOINT (COUPLING END)
24	25-25439		2	"O" RING, UNIVERSAL JOINT
25	39383		1	SOCKET, CENTER -UNIVERSAL JOINT
26	36312		2	CROSS AND BEARING ASSEMBLY, UNIVERSAL JOINT
27	54397		1	YOKE, UNIVERSAL JOINT (GEAR END)
28	57742A1		1	ADAPTOR ASSEMBLY, ROLLER BEARING
29	31-55831		1	ROLLER BEARING, ADAPTOR
30	43-54401A2		1	GEAR ASSEMBLY, PINION-UNIVERSAL JOINT (REAR)
31	15-54008A1		AR	SHIM ASSEMBLY, REAR PINION GEAR (.002-3-5-10)
32	31-54038A2		1	TAPERED ROLLER BEARING ASSEMBLY, REAR PINION GEAR
33	23-53999		1	SPACER, TAPERED ROLLER BEARING CUPS
34	12-54049		1	WASHER, SPLINTED-REAR PINION GEAR
35	11-54046		1	NUT, REAR PINION GEAR
36	12-54006		1	WASHER, UNIVERSAL JOINT
37	11-55819		1	NUT, UNIVERSAL JOINT
38	15-54008A1		AR	SHIM ASSEMBLY, REAR COVER (.002-3-5-10)
39	25-39695		1	"O" RING, REAR COVER
40	57765		1	COVER, REAR
41	10-31985		4	SCREW, REAR COVER TO DRIVE SHAFT HOUSING (1 1/4")
42	15-54009A1		AR	SHIM ASSMBLY, TAPERED ROLLER BEARING (.002-3-510)

CONTINUED ON NEXT PAGE ➡

DRIVE SHAFT HOUSING AND GEAR ASSEMBLY HYDRAULIC SHIFT

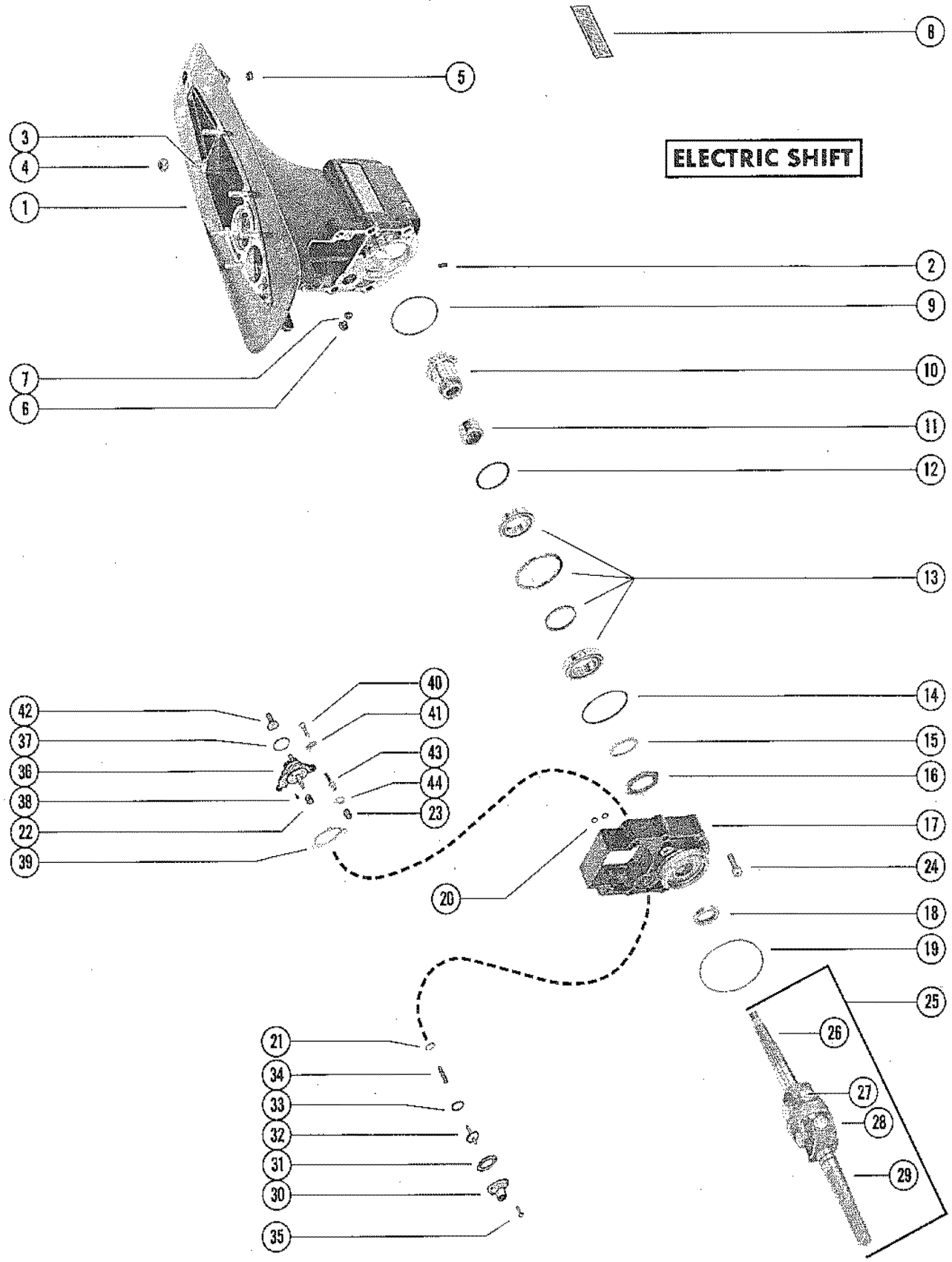
HYDRAULIC SHIFT



DRIVE SHAFT HOUSING AND GEAR ASSEMBLY HYDRAULIC SHIFT

REF. NO.	PART NO.	SYM.	QTY.	DESCRIPTION
43	31-55466A1		1	TAPERED ROLLER BEARING ASSEMBLY, DRIVE GEAR
44	43-54399		1	GEAR, DRIVE-DRIVE SHAFT
45	12-54414		5	WASHER, DRIVE GEAR
46	11-55820		1	NUT, DRIVE GEAR TO DRIVE SHAFT
47	25-54031		1	"O" RING TOP COVER
48	54164		1	COVER, TOP
49	10-31985		4	SCREW, TOP COVER TO DRIVE SHAFT HOUSING (1 1/4")
50	37-56081A1		1	DECAL SET, DRIVE SHAFT HOUSING

DRIVE SHAFT HOUSING AND GEAR ASSEMBLY ELECTRIC SHIFT(PAGE 1)

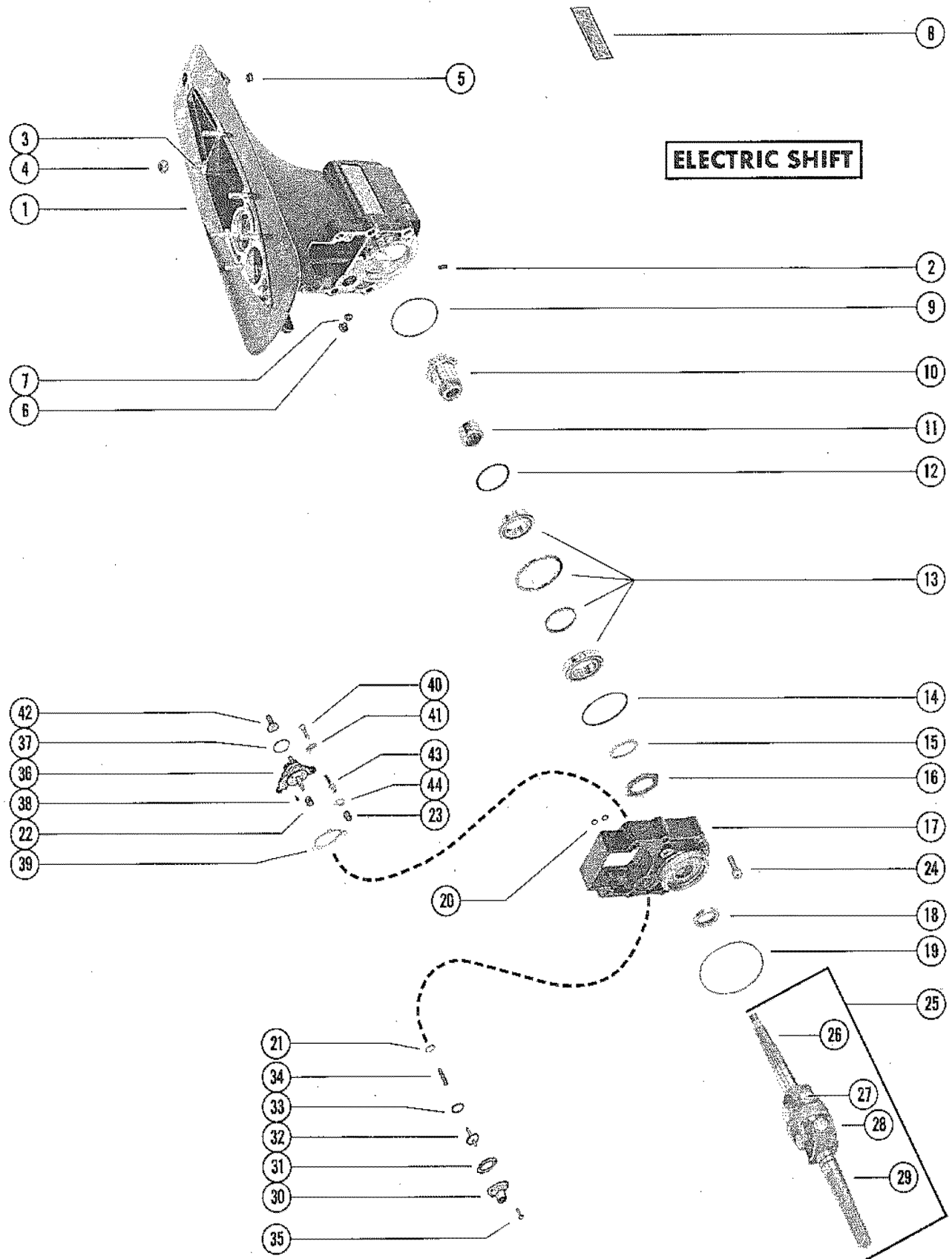


DRIVE SHAFT HOUSING AND GEAR ASSEMBLY ELECTRIC SHIFT(PAGE 1)

REF. NO.	PART NO.	SYM.	QTY.	DESCRIPTION
1	1571-4113A1		1	DRIVE SHAFT HOUSING ASSEMBLY
2	10-21934		1	SCREW, SET - DRIVE SHAFT HOUSING
3	16-54674		6	STUD, DRIVE SHAFT HOUSING TO GEAR HOUSING (2 1/4")
4	11-34933		6	NUT, DRIVE SHAFT HOUSING STUD
5	19-47579		1	PLUG, TRIM TAB HOLE - DRIVE SHAFT HOUSING
6	10-28634		1	SCREW, VENT - DRIVE SHAFT HOUSING
7	12-20260		1	WASHER, SEALING - VENT SCREW
8	37-56081A1		1	DECAL SET, DRIVE SHAFT HOUSING
9	15-57423A1		AR	SHIM ASSEMBLY, FRONT PINION GEAR (.002-3-5-10)
10	43-57501A1		1	GEAR ASSEMBLY, PINION -UNIVERSAL JOINT (FRONT)
11	31-57410		1	ROLLER BEARING, FRONT PINION GEAR
12	25-57413		1	"O" RING, DRIVE SHAFT HOUSING
13	31-57411A2		1	TAPERED ROLLER BEARING ASSEMBLY, FRONT PINION GEAR
14	15-57423A1		AR	SHIM ASSEMBLY, FRONT COVER (.002-3-5-10)
15	12-57502		1	WASHER, SPLINED - FRONT PINION GEAR
16	11-57503		1	NUT, FRONT PINION GEAR
17	57497A1		1	COVER ASSEMBLY, FRONT
18	26-56768		1	OIL SEAL, FRONT COVER
19	25-32068		1	"O" RING, FRONT COVER (4 1/8" I.D.)
20	25-45711		2	"O" RING, FRONT COVER (5/8" I.D.)
21	25-57414		1	"O" RING, FRONT COVER (1 1/2" I.D.)
22	23-55237		1	BUSHING, CRANKSHIFT GEAR - FRONT COVER
23	23-55238		1	BUSHING, CRANKSHIFT PINION - FRONT COVER
24	10-30206		4	SCREW, FRONT COVER TO DRIVE SHAFT HOUSING (1")
25	57498A1		1	UNIVERSAL JOINT ASSEMBLY, PINION GEARS
26	57498		1	YOKE, UNERSAL JOINT (REAR PINION END)
27	58749		2	CROSS AND BEARING ASSEMBLY, UNIVERSAL JOINT
28	39383		1	SOCKET, CENTER - UNIVERSAL JOINT
29	54086		1	YOKE, UNIVERSAL JOINT (COUPLING END)
30	54168		1	GUIDE, CHECK VALVE
31	27-54020		1	GASKET, CHECK VALVE GUIDE
32	20-48219		1	CHECK VALVE - OIL RELEASE
33	25-48452		1	QUAD RING, OIL RELEASE CHECK VALVE
34	24-48442		1	SPRING, TENSION - OIL RELEASE CHECK VALVE
35	10-22523		3	SCREW, CHECK VALVE GUIDE TO FRONT COVER
36	57505A1		1	COVER ASSEMBLY, CRANKSHIFT
37	25-47632		1	"O" RING, CRANKSHIFT COVER
38	10-57400		1	SCREW, SET - CRANKSHIFT GEAR
39	27-57506		1	GASKET, CRANKSHIFT COVER

CONTINUED ON NEXT PAGE ➡

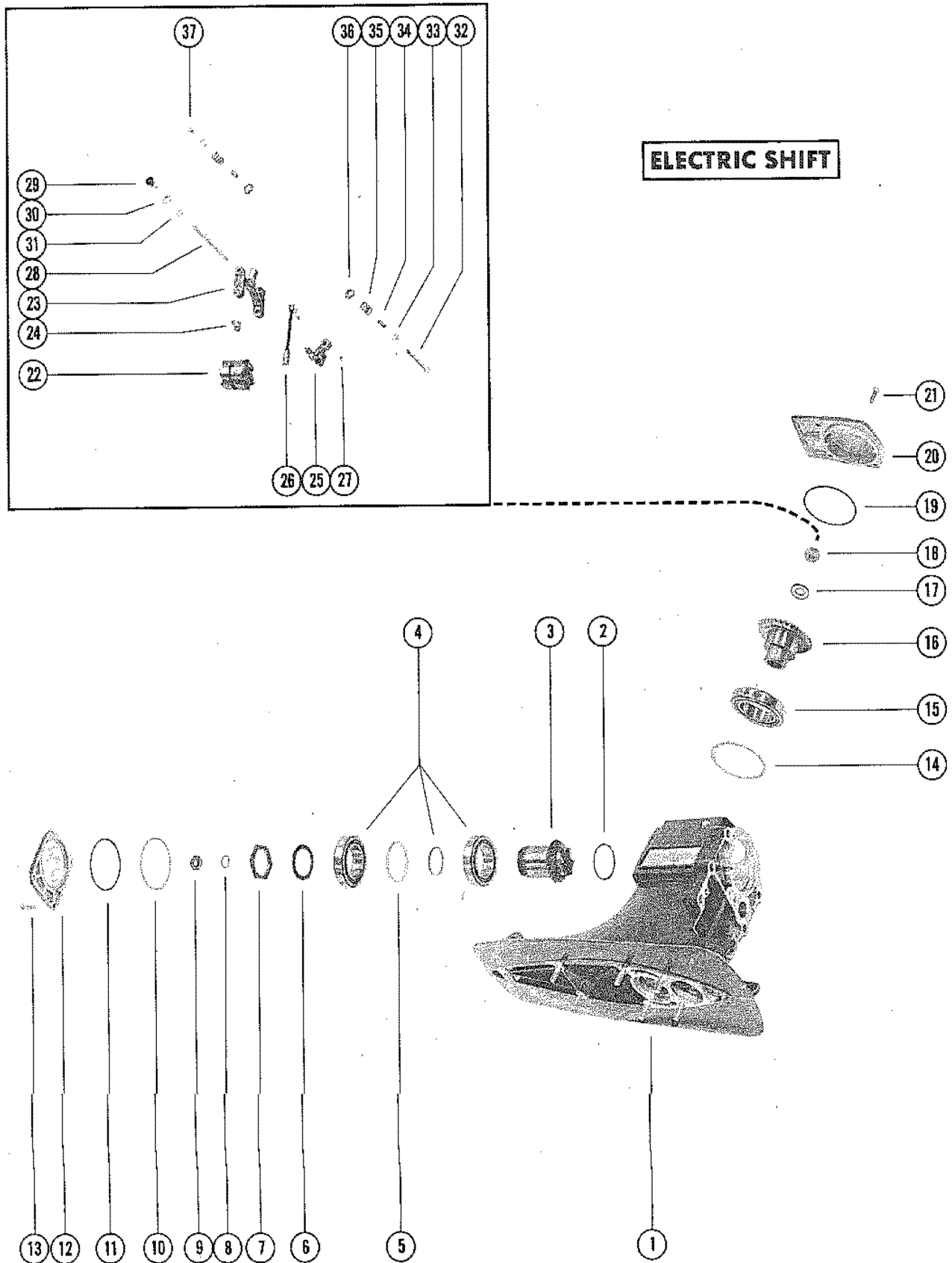
DRIVE SHAFT HOUSING AND GEAR ASSEMBLY ELECTRIC SHIFT(PAGE 1)



DRIVE SHAFT HOUSING AND GEAR ASSEMBLY ELECTRIC SHIFT(PAGE 1)

REF. NO.	PART NO.	SYM.	QTY.	DESCRIPTION
40	10-21625		3	SCREW, CRANKSHIFT COVER TO FRONT COVER (3/4")
41	13-21272		3	LOCKWASHER, CRANKSHIFT COVER SCREW
42	12-56635A1		1	WASHER ASSEMBLY, CRANKSHIFT
43	57500		1	PINION, CRANKSHIFT
44	15-48920A1		1	SHIM, CRANKSHIFT PINION (.025)

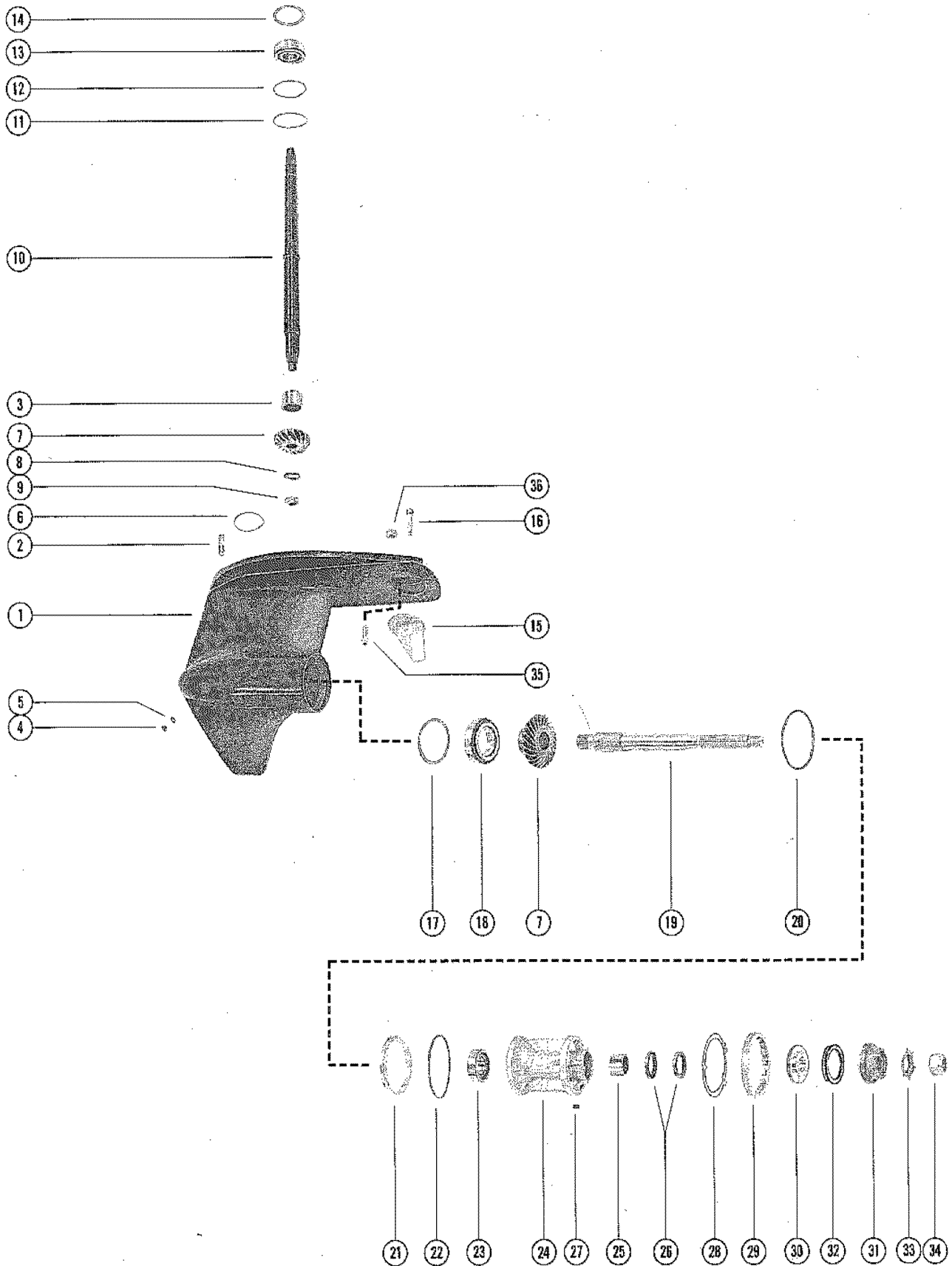
DRIVE SHAFT HOUSING AND GEAR ASSEMBLY ELECTRIC SHIFT(PAGE 2)



DRIVE SHAFT HOUSING AND GEAR ASSEMBLY ELECTRIC SHIFT(PAGE 2)

REF. NO.	PART NO.	SYM.	QTY.	DESCRIPTION
1	1571-4113A1		1	DRIVE SHAFT HOUSING ASSEMBLY
2	15-54008A1		AR	SHIM ASSEMBLY, REAR PINION GEAR
3	43-58854A1		1	GEAR ASSEMBLY, PINION - UNIVERSAL JOINT (REAR)
4	31-54038A2		1	TAPERED ROLLING BEARING ASSEMBLY, REAR PINION GEAR
5	23-53999		1	SPACER, TAPERED ROLLER BEARING CUPS
6	12-54049		1	WASHER, SPLINED - REAR PINION GEAR
7	11-54046		1	NUT, REAR PINION GEAR
8	12-54006		1	WASHER, UNIVERSAL JOINT
9	11-55819		1	NUT, UNIVERSAL JOINT
10	15-54008A1		AR	SHIM ASSEMBLY, REAR COVER
11	25-39695		1	"O" RING, REAR COVER
12	57765		1	COVER, REAR
13	10-31985		4	SCREW, REAR COVER TO DRIVE SHAFT HOUSING (1 1/4")
14	15-54009A1		AR	SHIM ASSEMBLY, TAPERED ROLLER BEARING (.002-3-5-10)
15	31-55466A1		1	TAPERED ROLLER BEARING ASSEMBLY, DRIVE GEAR
16	43-54399		1	GEAR, DRIVE - DRIVE SHAFT
17	12-54414		5	WASHER, DRIVE GEAR
18	11-55820		1	NUT, DRIVE GEAR TO DRIVE SHAFT
19	25-54031		1	"O" RING, TOP COVER
20	54164		1	COVER, TOP
21	10-31985		4	SCREW, TOP COVER TO DRIVE SHAFT HOUSING (1 1/4")
22	52-58312		1	RATCHET, SLIDING CLUTCH
23	54165		1	SHIFT FORK, SLIDING CLUTCH
24	54161		2	SHOE, SHIFT FORK
25	58317		1	LEVER, SHIFT FORK
26	58315A1		1	LINK ROD ASSEMBLY, CRANKSHIFT TO SHIFT FORK LEVER
27	11-24652		1	NUT, LINK ROD ATTACHING
28	54348		1	SHIFT SHAFT, SHIFT FORK
29	23-54349		2	BUSHING, THREADED - SHIFT SHAFT ATTACHING
30	12-54351		2	WASHER, FIBER - THREADED BUSHING
31	12-20086		2	WASHER, THREADED BUSHING
32	10-34298		1	SCREW, ADJUSTING - SHIFT FORK (2 1/2")
33	12-54017		2	WASHER, ADJUSTING SCREW
34	23-54015		2	SPACER, ADJUSTING SCREW
35	24-58394		2	SPRING, ADJUSTING SCREW
36	12-39143		2	WASHER, ADJUSTING SCREW
37	11-20664		1	NUT, ADJUSTING SCREW

GEAR HOUSING ASSEMBLY, COMPLETE

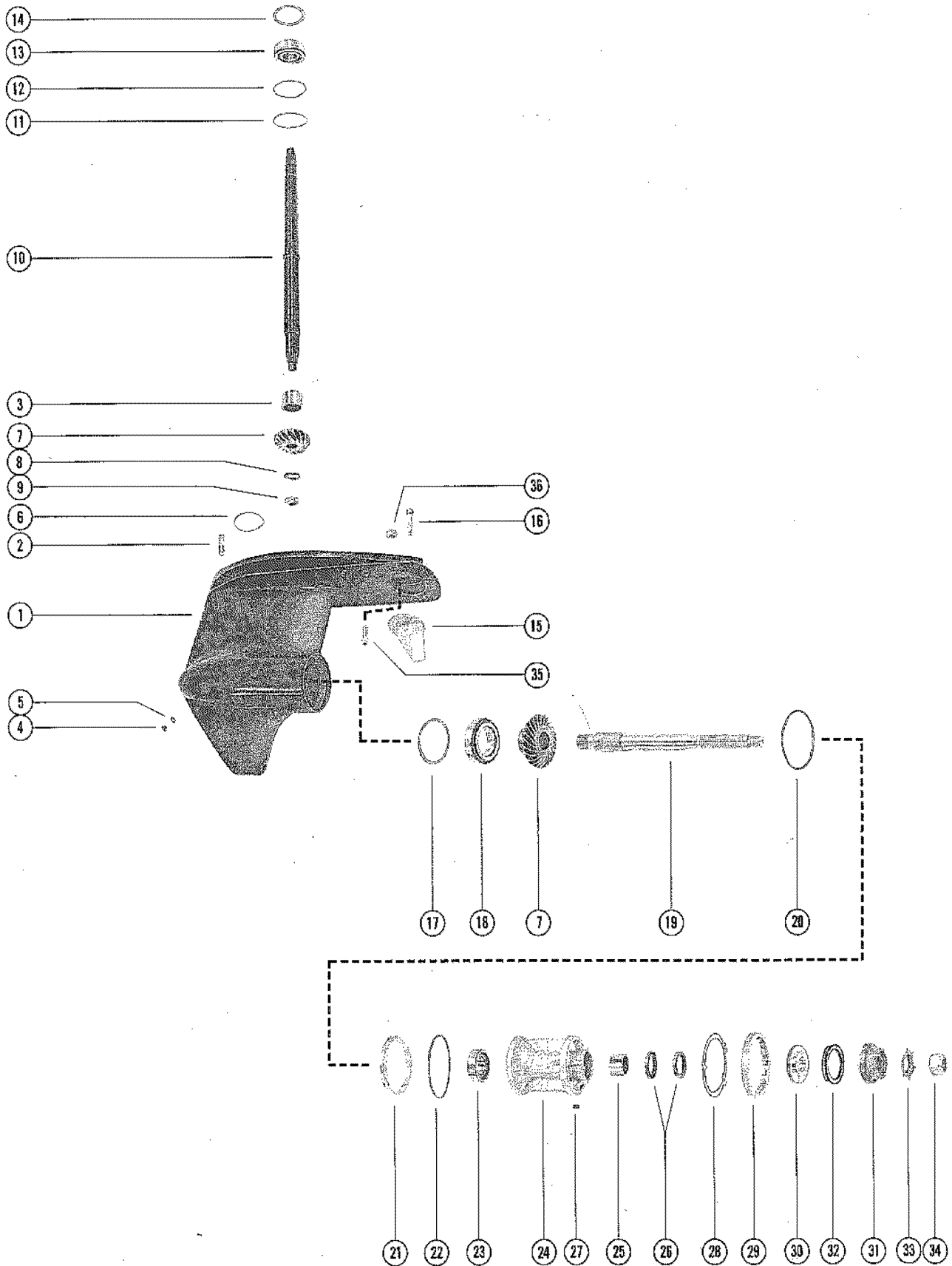


GEAR HOUSING ASSEMBLY, COMPLETE

REF. NO.	PART NO.	SYM.	QTY.	DESCRIPTION
-	1641-3767A3		1	GEAR HOUSING ASSEMBLY, COMPLETE (HYDRAULIC SHIFT)
-	1641-4187A4		1	GEAR HOUSING ASSEMBLY, COMPLETE (ELECTRIC SHIFT)
1	1641-3767A1		1	GEAR HOUSING ASSEMBLY (HYDRAULIC SHIFT)
	1641-4187A1		1	GEAR HOUSING ASSEMBLY(ELECTRIC SHIFT)
2	16-57982		0	STUD, GEAR HOUSING TO DRIVE SHAFT HOUSING (1 7/8")
3	31-53780		1	ROLLER BEARING, DRIVE SHAFT
4	10-28634		1	SCREW, VENT - GEAR HOUSING
5	12-20260		1	WASHER, SEAL - VENT SCREW
6	25-54029		1	"O" RING, GEAR HOUSING (3" O.D.)
7	43-54402A2		1	GEAR ASSEMBLY (DRIVE AND PINION)
8	12-54048		1	WASHER, PINION GEAR TO DRIVE SHAFT
9	11-55819		1	NUT, PINION GEAR TO DRIVE SHAFT
10	45-54396		1	DRIVE SHAFT
11	25-54030		1	"O" RING, GEAR HOUSING (3 3/16" O.D.)
12	15-39808A1		AR	SHIM ASSEMBLY, ROLLER BEARING TO GEAR HOUSING (.002-3-5-10)
13	31-47669A1		1	TAPERED ROLLER BEARING ASSEMBLY, DRIVE SHAFT
14	15-39899A1		AR	SHIM ASSEMBLY, ROLLER BEARING TO DRIVE SHAFT HOUSING (.002-
15	34127A1		1	TRIM TAB ASSEMBLY, GEAR HOUSING (HYDRAULIC SHIFT)
	31640A1		1	TRIM TAB ASSEMBLY, GEAR HOUSING (ELECTRIC SHIFT)
16	10-49354		1	SCREW, TRIM TAB TO GEAR HOUSING (2 1/2")
17	15-55499A1		AR	SHIM ASSEMBLY, ROLLER BEARING TO GEAR HOUSING(.002-3-5-10)
18	31-54038A1		1	TAPERED ROLLER BEARING ASSEMBLY, PROPELLER GEAR
19	44-54255		1	PROPELLER SHAFT
20	15-54005A1		AR	SHIM ASSEMBLY, THRUST RING TO GEAR HOUSING (.002-3-5-10)
21	54166		1	RING, THRUST - BEARING CARRIER
22	25-34821		1	"O" RING, BEARING CARRIER
23	31-54036A1		1	TAPERED ROLLER BEARING ASSEMBLY
24	53936A1		1	BEARING CARRIER ASSEMBLY
25	31-54042		1	ROLLER BEARING, BEARING CARRIER
26	26-54926		2	OIL SEAL, BEARING CARRIER
27	28-30281		1	KEY, LOCATING - BEARING CARRIER
28	14-54167		1	TAB WASHER, GEAR HOUSING COVER
29	54163		1	COVER, GEAR HOUSING
30	55074		1	HUB, THRUST - PROPELLER SHAFT
31	12-55073A1		1	WASHER ASSEMBLY, SPLINED

CONTINUED ON NEXT PAGE ➡

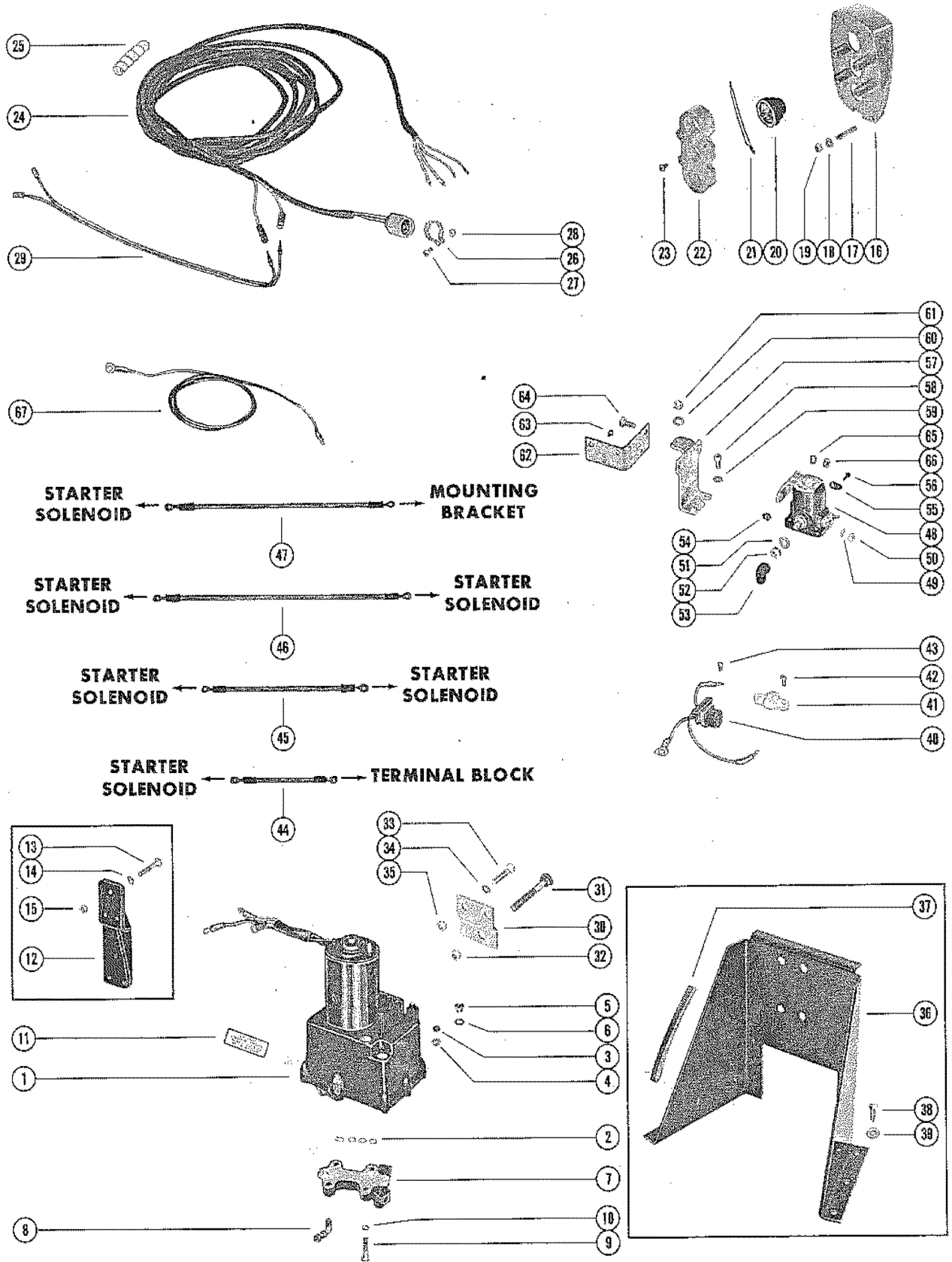
GEAR HOUSING ASSEMBLY, COMPLETE



GEAR HOUSING ASSEMBLY, COMPLETE

REF. NO.	PART NO.	SYM.	QTY.	DESCRIPTION
32	12-55072		1	WASHER, CUPPED - SPLINED WASHER
33	14-34817		1	TAB WASHER, PROPELLER NUT
34	11-54034		1	NUT, PROPELLER
35	10-47557		1	SCREW, GEAR HOUSING TO DRIVE SHAFT HOUSING (1 1/2")
36	11-34933		1	NUT, GEAR HOUSING SCREW

HYDRAULIC PUMP AND TRIM INDICATOR CONTROL PANEL

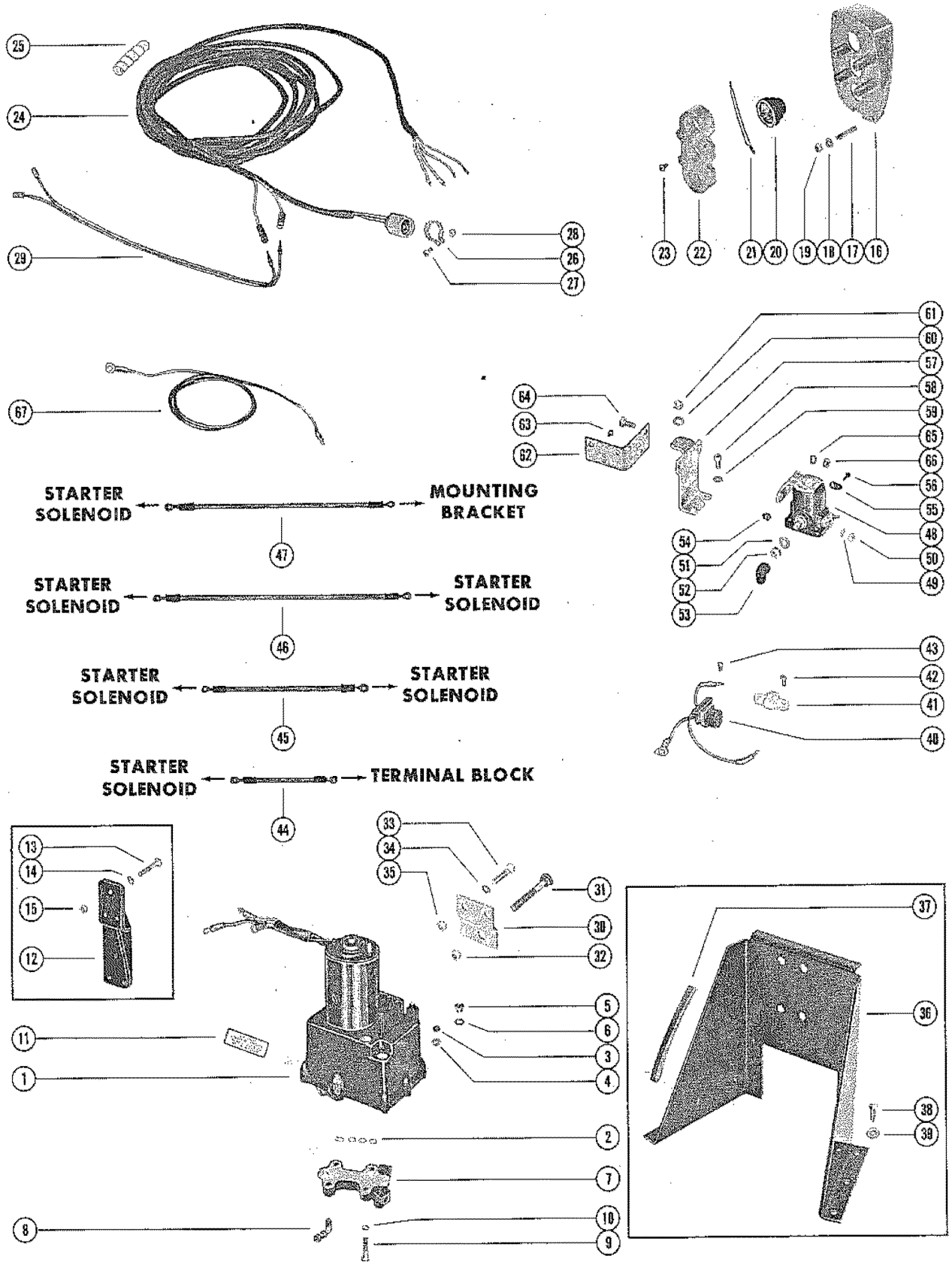


HYDRAULIC PUMP AND TRIM INDICATOR CONTROL PANEL

REF. NO.	PART NO.	SYM.	QTY.	DESCRIPTION
1	45060A7		1	HYDRAULIC PUMP ASSEMBLY SEE PAGE 19 FOR PARTS BREAKDOWN
2	25-21720		4	"O" RING, HYDRAULIC PUMP TO CONTROL VALVE
3	10-46918		1	SCREW, VENT - HYDRAULIC PUMP
4	13-46917		1	LOCKWASHER, SEALING - VENT SCREW
5	10-28634		1	SCREW, FILLER - HYDRAULIC PUMP
6	12-20260		1	WASHER, SEALING - HYDRAULIC PUMP FILLER SCREW
7	48077A4		1	CONTROL VALVE ASSEMBLY
	25-21720		4	"O" RING, HYDRAULIC PUMP TO CONTROL VALVE SEE REFERENCE #2
8	22-52666		1	ELBOW, CONTROL VALVE
9	10-20653		4	SCREW, CONTROL VALVE TO HYDRAULIC PUMP (1")
10	13-26992		4	LOCKWASHER, CONTROL VALVE SCREW
11	38-55823		1	DECAL, INSTRUCTIONS - HYDRAULIC PUMP
12	57823		1	BRACKET, MOUNTING - HYDRAULIC PUMP HYDRAULIC SHIFT
13	10-26066		6	SCREW, HYDRAULIC PUMP TO MOUNTING BRACKET AND TRANSOM PLATE HYDRAULIC SHIFT
14	12-20546		6	WASHER, HYDRAULIC PUMP SCREW HYDRAULIC SHIFT
15	11-35814		6	NUT, HYDRAULIC PUMP SCREW HYDRAULIC SHIFT
	55642A3		1	CONTROL PANEL ASSEMBLY, COMPLETE HYDRAULIC SHIFT
16	55642A1		1	PANEL ASSEMBLY, CONTROL HYDRAULIC SHIFT
17	16-55422		4	STUD, CONTROL PANEL TO BOAT (2") HYDRAULIC SHIFT
18	12-24676		4	WASHER, CONTROL PANEL STUD HYDRAULIC SHIFT
19	11-27164		4	NUT, CONTROL PANEL STUD HYDRAULIC SHIFT
20	55738A1		3	SWITCH, PUSH BUTTON - CONTROL PANEL HYDRAULIC SHIFT
21	48078		1	JUMPER WIRE, PUSH BUTTON SWITCH (RED - 3 1/4") HYDRAULIC SHIFT
	53107		1	JUMP WIRE, PUSH BUTTON SWITCH (PURPLE -3") HYDRAULIC SHIFT
22	55641		1	RETAINER, PUSH BUTTON SWITCH HYDRAULIC SHIFT
23	10-30663		4	SCREW, SWITCH RETAINER TO CONTROL PANEL (1/2") HYDRAULIC SHIFT
24	45341-20		1	HARNESS, CONTROL PANEL HYDRAULIC SHIFT
25	33865		1	BINDER, NYLON - CONTROL PANEL HARNESS HYDRAULIC SHIFT
26	54-46770		1	CLAMP, HARNESS ATTACHING HYDRAULIC SHIFT
27	10-29227		1	SCREW, HARNESS ATTACHING CLAMP (1/2") HYDRAULIC SHIFT
28	11-34388		1	NUT, HARNESS ATTACHING CLAMP SCREW HYDRAULIC SHIFT
29	57756		1	WIRING HARNESS, HYDRAULIC PUMP ELECTRIC SHIFT
30	45377		2	BRACKET, MOUNTING - HYDRAULIC PUMP (TRANSOM MOUNTED) ELECTRIC SHIFT
31	10-28009		2	SCREW, PUMP MOUNTING BRACKET TO TRANSOM (3 1/4") ELECTRIC SHIFT

CONTINUED ON NEXT PAGE ➡

HYDRAULIC PUMP AND TRIM INDICATOR CONTROL PANEL

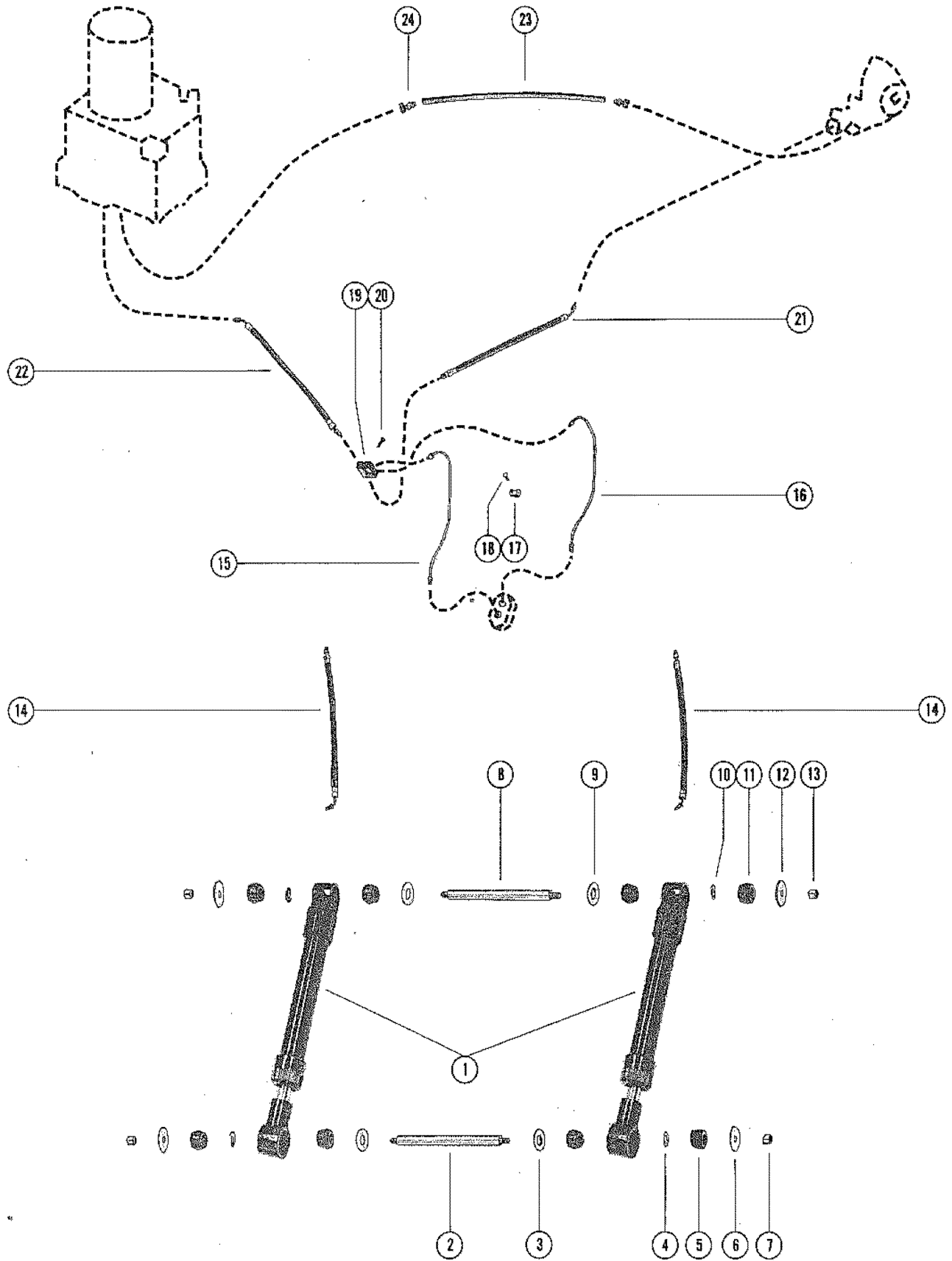


HYDRAULIC PUMP AND TRIM INDICATOR CONTROL PANEL

REF. NO.	PART NO.	SYM.	QTY.	DESCRIPTION
32	11-35304		2	NUT, PUMP MOUNTING BRACKET SCREW ELECTRIC SHIFT
33	10-24234		4	SCREW, HYDRAULIC PUMP TO MOUNTING BRACKET (1") ELECTRIC SHIFT
34	13-39107		4	LOCKWASHER, HYDRAULIC PUMP SCREW ELECTRIC SHIFT
35	11-21908		4	NUT, HYDRAULIC PUMP SCREW ELECTRIC SHIFT
36	58397A2		1	BRACKET, MOUNTING - HYDRAULIC PUMP (FLOOR MOUNTED) ELECTRIC SHIFT
37	58491		2	BUMPER, RUBBER - PUMP MOUNTING BRACKET ELECTRIC SHIFT
38	10-59784		6	SCREW, PUMP MOUNTING BRACKET ATTACHING (1") ELECTRIC SHIFT
39	12-29245		6	WASHER, PUMP MOUNTING BRACKET SCREW ELECTRIC SHIFT
40	45325		1	CONNECTOR AND HARNESS
41	45559		1	TERMINAL BLOCK, HYDRAULIC PUMP
42	10-28192		2	SCREW, TERMINAL BLOCK TO HYDRAULIC PUMP (1/2")
43	10-30663		2	SCREW, HARNESS LEADS TO TERMINAL BLOCK (3/8")
44	55990		1	JUMPER WIRE, SOLENOID TO TERMINAL BLOCK (GREEN - 4")
45	55991		1	JUMPER WIRE, SOLENOID TO SOLENOID (RED - 7)
46	55992		1	JUMPER WIRE, SOLENOID TO SOLENOID (BLACK - 11 1/2")
47	52752		1	JUMPER WIRE, STARTER SOLENOID TO MOUNTING BRACKET (BLACK - 1
48	25661		2	STARTER SOLENOID
49	13-26996		4	LOCKWASHER, STARTER SOLENOID TERMINAL (#10)
50	11-20645		4	NUT, STARTER SOLENOID TERMINAL (#10)
51	13-26993		4	LOCKWASHER, STARTER SOLENOID TERMINAL (5/16")
52	11-20083		4	NUT, STARTER SOLENOID TERMINAL (5/16")
53	46265		3	BOOT, RUBBER - STARTER SOLENOID TERMINAL
54	49342		1	BUMPER, STARTER SOLENOID TO MOUNTING BRACKET
55	26551		1	BRACKET, STARTER SOLENOID TERMINAL (5/16")
56	10-30663		1	SCREW, HYDRAULIC PUMP LEAD TO BRACKET (3/8")
57	45321		1	BRACKET, MOUNTING - STARTER SOLENOID
58	10-21140		2	SCREW, MOUNTING BRACKET TO HYDRAULIC PUMP (1/2")
59	13-26992		2	LOCKWASHER, MOUNTING BRACKET SCREW
60	13-27660		1	LOCKWASHER, HYDRAULIC PUMP THRU BOLT
61	11-20645		1	NUT, MOUNTING BRACKET TO HYDRAULIC PUMP THUR BOLT
62	55926		1	BRACKET, STARTER SOLENOID MOUNTING
63	26901		1	BUMPER, HYDRAULIC PUMP TO MOUNTING BRACKET
64	10-34290		2	STARTER SOLENOID TO MOUNTING BRACKET (5/8")
	10-21625		2	SCREW, SARTER SOLENOID TO MOUNTING BRACKET (3/4")
65	13-26992		4	LOCKWASHER, STARTER SOLENOID SCREW
66	11-21825		4	NUT, STARTER SOLENOID SCREW
67	52509		1	BATTERY LEAD (NEGATIVE)
	45551		1	BATTERY LEAD (POSITIVE)

CONTINUED ON NEXT PAGE ➡

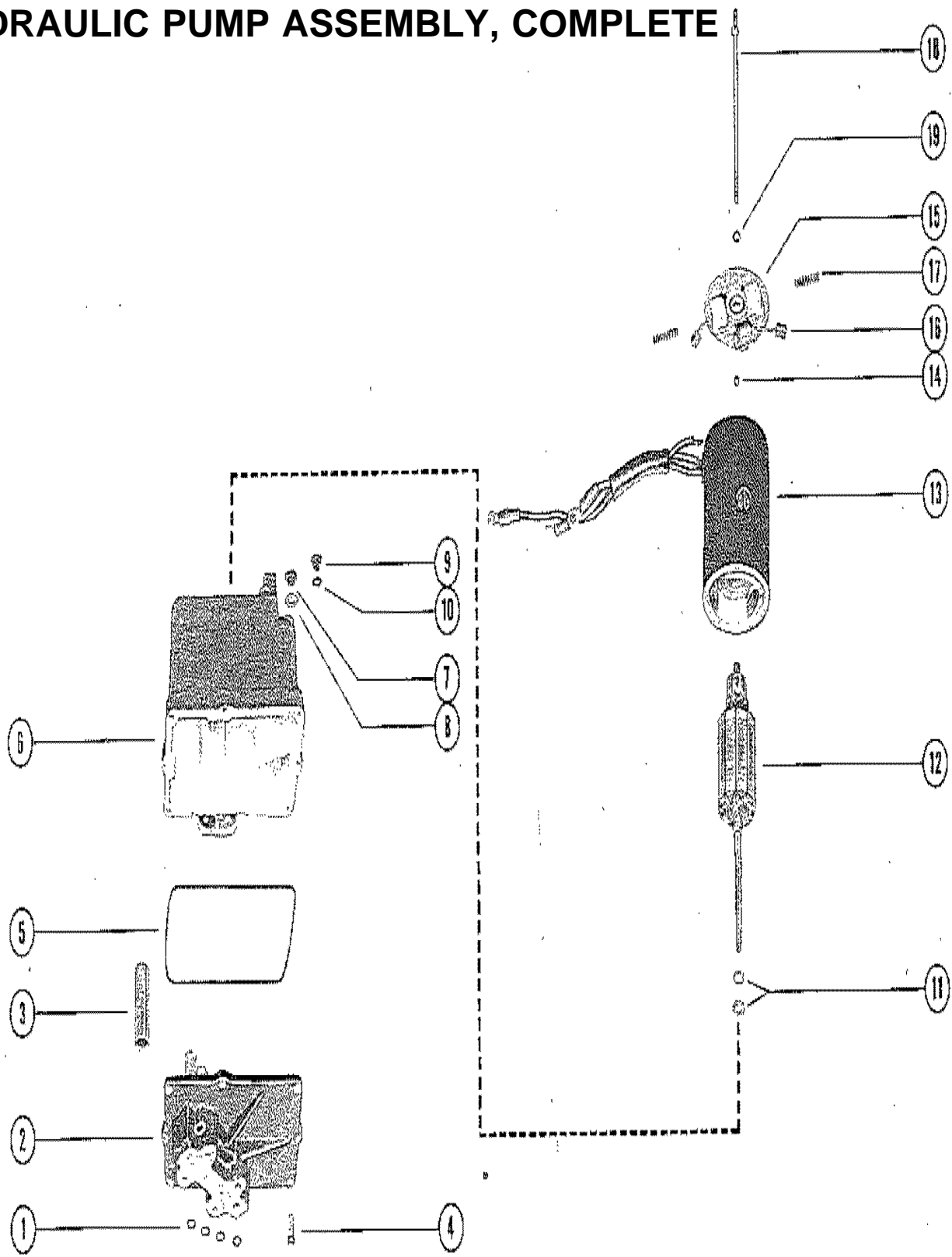
TRIM CYLINDERS AND HYDRAULIC HOSES



TRIM CYLINDERS AND HYDRAULIC HOSES

REF. NO.	PART NO.	SYM.	QTY.	DESCRIPTION
1	47342A3		2	TRIM CYLINDER ASSEMBLY, COMPLETE HYDRAULIC SHIFT
	47342A7		2	TRIM CYLINDER ASSEMBLY, COMPLETE ELECTRIC SHIFT
2	17-49279		1	PIN, ANCHOR - DRIVE SHAFT HOUSING (11 13/16")
3	12-47395		2	WASHER, DRIVE SHAFT HOUSING ANCHOR PIN (59/64" I.D.)
4	24-49593		2	SPRING, DRIVE SHAFT HOUSING ANCHOR PIN
5	23-61291		4	BUSHING, RUBBER - DRIVE SHAFT HOUSING ANCHOR PIN
6	12-47394		2	WASHER, DRIVE SHAFT HOUSING ANCHOR PIN (33/64" I.D.)
7	11-35000		2	NUT, DRIVE SHAFT HOUSING ANCHOR PIN
8	17-47374		1	PIN, ANCHOR - GIMBAL RING (13 1/4")
9	12-47395		2	WASHER, GIMBAL RING ANCHOR PIN (59/64" I.D.)
10	24-49593		2	SPRING, GIMBAL RING ANCHOR PIN
11	23-61291		4	BUSHING, RUBBER - GIMBAL RING ANCHOR PIN
12	12-47394		2	WASHER, GIMBAL RING ANCHOR PIN (33/64" I.D.)
13	11-35000		2	NUT, GIMBAL RING ANCHOR PIN
14	32-47373		4	HOSE, HYDRAULIC - CONNECTOR TO TRIM CYKINDER (12 1/2")
15	32-54409		1	TUBING, HYDRAULIC - LOWER CONNECTOR TO UPPER CONNECTOR
16	32-54408		1	TUBING, HYDRAULIC - LOWER CONNECTOR TO UPPER CONNECTOR
17	54-54930		1	CLAMP, HYDRAULIC TUBING TO GIMBAL HOUSING
18	10-20031		1	SCREW, CLAMP TO GIMBAL HOUSING (1/2")
19	54515		1	CONNECTOR, HYDRAULIC - GIMBAL HOUSING (UPPER)
20	10-28668		1	SCREW, UPPER CONNECTOR TO GIMBAL HOUSING (7/8")
21	32-57833		1	HOSE, HYDRAULIC - CONNECTOR TO VALVE (12 3/4") HYDRAULIC SHIFT
22	32-57830		1	HOSE, HYDRAULIC - CONNECTOR TO PUMP (11 3/4") HYDRAULIC SHIFT
23	32-52951A1		1	TUBING ASS Y, HYDRAULIC PUMP TO REVERSE LOCK VALVE (15") HYDRAULIC SHIFT
21	32-56287A1		1	HOSE, HYDRAULIC - CONNECTOR TO VALVE (15") ELECTRIC SHIFT
22	32-58431A1		1	HOSE, HYDRAULIC - CONNECTOR TO PUMP (44") ELECTRIC SHIFT
23	32-58432A1		1	TUBING ASS Y, HYDRAULIC PUMP TO REVERSE LOCK VALVE (49") ELECTRIC SHIFT
24	22-49718		2	NUT, COMPRESSION - HYDRAULIC TUBING ATTACHING

HYDRAULIC PUMP ASSEMBLY, COMPLETE



HYDRAULIC PUMP ASSEMBLY, COMPLETE

REF. NO.	PART NO.	SYM.	QTY.	DESCRIPTION
-	45060A7		1	HYDRAULIC PUMP ASSEMBLY, COMPLETE
1	25-21720		4	"O" RING, HYDRAULIC PUMP
2	392-2936		1	VALVE BODY AND GEAR ASSEMBLY
3	392-2618		1	CAM, VALVE BODY
4	10-20411		8	SCREW, VALVE BODY TO RESERVIOR (5/8")
5	392-2937		1	SEAL, RESERVIOR TO VALVE BODY AND GEAR
6	392-2939		1	RESERVIOR ASSEMBLY
7	10-46918		1	SCREW, VENT - HYDRAULIC PUMP
8	13-46917		1	LOCKWASHER, SEALING - VENT SCREW
9	10-28634		1	SCREW, FILLER - HYDRAULIC PUMP
10	12-20260		1	WASHER, SEALING - FILLER SCREW
11	392-2623		AR	WASHER, THRUST - ARMATURE
12	392-2943		1	ARMATURE, FIELD AND FRAME
13	392-2942		1	FIELD AND FRAME ASSEMBLY
14	392-2944		1	BALL, COMMUTATOR END PLATE
15	392-2940		1	PLATE ASSEMBLY, COMMUTATOR END
16	392-2941		1	BRUSH SET, COMMUTATOR END PLATE
17	392-2529		1	SPRING SET, BUSH TENSION
18	392-2938		1	BOLT SET, THRU - PLATE AND FRAME TO RESERVIOR
19	13-26996		2	LOCKWASHER, THRU BOLT

PARTS INDEX

Part Number	Description	Pg.	Ref. No.	Part Number	Description	Pg.	Ref. No.
25661	STARTER SOLENOID	27	48	48078	JUMPER WIRE, PUSH		
26551	BRACKET, STARTER SOLENOID TERMINAL (5/16")	27	55	49342	BUMPER, STARTER SOLENOID TO MOUNTING BRACKET	25	21
26901	BUMPER, HYDRAULIC PUMP TO MOUNTING BRACKET	27	63	52509	BATTERY LEAD (NEGATIVE)	27	67
29359	LUBRICAP, GIMBAL HOUSING GREASE FITTING	9	37	52752	JUMPER WIRE, STARTER SOLENOID TO MOUNTING BRACKET (BLACK - 1	27	47
29359	LUBRICAP, GIMBAL RING GREASE FITTING	5	5	53107	JUMP WIRE, PUSH BUTTON SWITCH (PURPLE -3")	25	21
31640A1	TRIM TAB ASSEMBLY, GEAR HOUSING (ELECTRIC SHIFT)	21	15	53934A2	BELL HOUSING ASSEMBLY	7	1
31659	BELLOWS, CRANKSHIFT SHAFT	7	27	53934A3	BELL HOUSING ASSEMBLY	7	1
33865	BINDER, NYLON - CONTROL PANEL HARNESS	25	25	53936A1	BEARING CARRIER ASSEMBLY	21	24
34127A1	TRIM TAB ASSEMBLY, GEAR HOUSING (HYDRAULIC SHIFT)	21	15	53979A1	GIMBAL HOUSING ASSEMBLY	7	30
34762A1	PLATE ASSEMBLY, INHIBITOR-GIMBAL HOUSING	9	44	54068	PILOT RING, GIMBAL HOUSING	9	42
35431A1	LINK ROD ASSEMBLY, STEERING	5	24	54086	YOKE, UNIVERSAL JOINT (COUPLING END)	15	29
36223A1	BELLOWS ASSEMBLY, UNIVERSAL JOINT	7	21	54092	PLATE, TRANSOM	3	1
36312	CROSS AND BEARING ASSEMBLY, UNIVERSAL JOINT	11	26	54161	SHOE, SHIFT FORK	19	24
39383	SOCKET, CENTER - UNIVERSAL JOINT	15	28	54163	COVER, GEAR HOUSING	21	29
39383	SOCKET, CENTER -UNIVERSAL JOINT	11	25	54164	COVER, TOP	13	48
45060A7	HYDRAULIC PUMP ASSEMBLY	25	1	54164	COVER, TOP	19	20
45060A7	HYDRAULIC PUMP ASSEMBLY, COMPLETE	31	-	54165	SHIFT FORK, SLIDING CLUTCH	19	23
45321	BRACKET, MOUNTING - STARTER SOLENOID	27	57	54166	RING, THRUST - BEARING CARRIER	21	21
45325	CONNECTOR AND HARNESS	27	40	54168	GUIDE, CHECK VALVE	11	17
45341-20	HARNESS, CONTROL PANEL	25	24	54168	GUIDE, CHECK VALVE	15	30
45377	BRACKET, MOUNTING - HYDRAULIC PUMP (TRANSOM MOUNTED)	25	30	54170A1	COVER ASSEMBLY, CHECK VALVE GUIDE	7	12
45551	BATTERY LEAD (POSITIVE)	27	67	54234	COVER, EXHAUST	3	15
45559	TERMINAL BLOCK, HYDRAULIC PUMP	27	41	54244A1	COVER ASSEMBLY, OIL RESERVIOR-TRANSOM PLATE	3	3
46265	BOOT, RUBBER - STARTER SOLENOID TERMINAL	27	53	54348	SHIFT SHAFT, SHIFT FORK	19	28
47342A3	TRIM CYLINDER ASSEMBLY, COMPLETE	29	1	54394A2	GIMBAL RING ASSEMBLY	5	1
47342A7	TRIM CYLINDER ASSEMBLY, COMPLETE	29	1	54397	YOKE, UNIVERSAL JOINT (GEAR END)	11	27
47347	CONNECTOR, HYDRAULIC-GIMBAL HOUSING	9	52	54397A3	UNIVERSAL JOINT ASSEMBLY, PINION GEAR	11	22
				54404	SHAFT, UPPER SWIVEL-GIMBAL RING TO GIMBAL HOUSING	5	16
				54406	BELLOWS, EXHAUST	7	23
				54515	CONNECTOR, HYDRAULIC - GIMBAL HOUSING (UPPER)	29	19
				54666	LEVER, STEERING-UPPER SWIVEL SHAFT	5	20
				55074	HUB, THRUST - PROPELLER SHAFT	21	30
				55083	DIPSTICK, OIL LEVEL-OIL RESERVIOR	3	6
				55641	RETAINER, PUSH BUTTON SWITCH	25	22

PARTS INDEX

Part Number	Description	Pg.	Ref. No.	Part Number	Description	Pg.	Ref. No.
55642A1	PANEL ASSEMBLY, CONTROL	25	16	58397A2	BRACKET, MOUNTING - HYDRAULIC PUMP (FLOOR MOUNTED)	27	36
55642A3	CONTROL PANEL ASSEMBLY, COMPLETE	25	15	58491	BUMPER, RUBBER - PUMP MOUNTING BRACKET	27	37
55738A1	SWITCH, PUSH BUTTON - CONTROL PANEL	25	20	58749	CROSS AND BEARING ASSEMBLY, UNIVERSAL JOINT	15	27
55897	SEAL, EXHAUST COVER	3	16	10-20031	SCREW, CLAMP TO GIMBAL HOUSING (1/2")	29	18
55926	BRACKET, STARTER SOLENOID MOUNTING	27	62	10-20411	SCREW, VALVE BODY TO RESERVIOR (5/8")	31	4
55990	JUMPER WIRE, SOLENOID TO TERMINAL BLOCK (GREEN - 4")	27	44	10-20653	SCREW, CONTROL VALVE TO HYDRAULIC PUMP (1")	25	9
55991	JUMPER WIRE, SOLENOID TO SOLENOID (RED - 7)	27	45	10-21140	SCREW, MOUNTING BRACKET TO HYDRAULIC PUMP (1/2")	27	58
55992	JUMPER WIRE, SOLENOID TO SOLENOID (BLACK - 11 1/2")	27	46	10-21625	SCREW, CRANKSHIFT COVER TO FRONT COVER (3/4")	17	40
56038	EMBLEM, GIMBAL HOUSING	7	31	10-21625	SCREW, SARTER SOLENOID TO MOUNTING BRACKET (3/4")	27	64
56683A1	SENDER ASSEMBLY, TRIM INDICATOR (STARBOARD SIDE)	5	12	10-21934	SCREW, SET - DRIVE SHAFT HOUSING	15	2
56683A2	SWITCH ASSEMBLY, TRIM LIMIT (PORT SIDE)	5	11	10-21934	SCREW, SET-DRIVE SHAFT HOUSING	11	2
57008	RETAINER, TRIM SENDER AND SWITCH SCREW	5	15	10-22486	SCREW, PLUG COVER TO DRIVE SHAFT HOUSING (7/8")	11	10
57292	JUMPER CABLE, GIMBAL HOUSING TO CHECK VALVE GUIDE COVER	7	17	10-22523	SCREW, CHECK VALVE GUIDE TO FRONT COVER	15	35
57322	COVER, RETAINING-GIMBAL HOUSING	9	59	10-24234	SCREW, EXHAUST COVER TO TRANSOM PLATE-BOTTOM (1")	3	19
57497A1	COVER ASSEMBLY, FRONT YOKE, UNERSAL JOINT (REAR PINION END)	15	26	10-24234	SCREW, HYDRAULIC PUMP TO MOUNTING BRACKET (1")	27	33
57498	YOKE, UNERSAL JOINT (REAR PINION END)	15	26	10-2523	SCREW, CHECK VALVE GUIDE TO DRIVE SHAFT HOUSING (3/4")	11	19
57498A1	UNIVERSAL JOINT ASSEMBLY, PINION GEARS	15	25	10-25612	SCREW, DRIVE-EXHAUST FLANGE (BELL HOUSING)	7	4
57500	PINION, CRANKSHIFT	17	43	10-25612	SCREW, DRIVE-EXHAUST FLANGE (BELL HOUSING)	7	4
57505A1	COVER ASSEMBLY, CRANKSHIFT	15	36	10-25612	SCREW, DRIVE-EXHAUST FLANGE (GIMBAL HOUSING)	9	39
57637	CAP, SEALING-GIMBAL HOUSING	9	57	10-26065	SCREW, EXHAUST COVER TO TRANSOM PLATE (1")	3	17
57742A1	ADAPTOR ASSEMBLY, ROLLER BEARING	11	28	10-26066	SCREW, HYDRAULIC PUMP TO MOUNTING BRACKET AND TRANSOM PLATE	25	13
57745	COVER, PLUG-DRIVE SHAFT HOUSING	11	8	10-28009	SCREW, PUMP MOUNTING BRACKET TO TRANSOM (3 1/4")	25	31
57749A1	YOKE ASSEMBLY, UNIVERSAL JOINT (COUPLING END)	11	23	10-28192	SCREW, TERMINAL BLOCK TO HYDRAULIC PUMP (1/2")	27	42
57756	WIRING HARNESS, HYDRAULIC PUMP	25	29				
57765	COVER, REAR	11	40				
57765	COVER, REAR	19	12				
57823	BRACKET, MOUNTING - HYDRAULIC PUMP	25	12				
57842A2	SHAFT ASSEMBLY, CRANKSHIFT	7	25				
58315A1	LINK ROD ASSEMBLY, CRANKSHIFT TO SHIFT FORK LEVER	19	26				
58317	LEVER, SHIFT FORK	19	25				

PARTS INDEX

Part Number	Description	Pg.	Ref. No.	Part Number	Description	Pg.	Ref. No.
10-28634	SCREW, FILLER - HYDRAULIC PUMP	25	5	10-45833	SCREW, UPPER SWIVEL SHAFT RETAINING-GIMBAL RING (2 1/2")	5	9
10-28634	SCREW, FILLER - HYDRAULIC PUMP	31	9	10-46918	SCREW, VENT - HYDRAULIC PUMP	25	3
10-28634	SCREW, VENT - DRIVE SHAFT HOUSING	15	6	10-46918	SCREW, VENT - HYDRAULIC PUMP	31	7
10-28634	SCREW, VENT - GEAR HOUSING	21	4	10-47225	SCREW, JUMPER CABLE	7	18
10-28634	SCREW, VENT-DRIVE SHAFT HOUSING	11	12	10-47467	SCREW, TRANSOM PLATE TO FLYWHEEL HOUSING (5 1/2")	3	9
10-28636	SCREW, COVER TO GIMBAL HOUSING (3/4")	9	49	10-47557	SCREW, GEAR HOUSING TO DRIVE SHAFT HOUSING (1 1/2")	23	35
10-28636	SCREW, RETAINING COVER TO GIMBAL HOUSING (3/4")	9	60	10-49354	SCREW, TRIM TAB TO GEAR HOUSING (2 1/2")	21	16
10-28668	SCREW, UPPER CONNECTOR TO GIMBAL HOUSING (7/8")	29	20	10-54488	BOLT, LINK ROD TO STEERING LEVER	5	25
10-29227	SCREW, HARNESS ATTACHING CLAMP (1/2")	25	27	10-54523	SCREW, OIL RESERVIOR COVER TO TRANSOM PLATE (1")	3	5
10-30206	SCREW, FRONT COVER TO DRIVE SHAFT HOUSING (1")	15	24	10-57400	SCREW, SET - CRANKSHIFT GEAR	15	38
10-30663	SCREW, HARNESS LEADS TO TERMINAL BLOCK (3/8")	27	43	10-59784	SCREW, PUMP MOUNTING BRACKET ATTACHING (1")	27	38
10-30663	SCREW, HYDRAULIC PUMP LEAD TO BRACKET (3/8")	27	56	11-20083	NUT, STARTER SOLENOID TERMINAL (5/16")	27	52
10-30663	SCREW, SWITCH RETAINER TO CONTROL PANEL (1/2")	25	23	11-20509	NUT, LINK ROD	5	31
10-31985	SCREW, REAR COVER TO DRIVE SHAFT HOUSING (1 1/4")	11	41	11-20509	NUT, LINK ROD BOLT	5	29
10-31985	SCREW, REAR COVER TO DRIVE SHAFT HOUSING (1 1/4")	19	13	11-20645	NUT, MOUNTING BRACKET TO HYDRAULIC PUMP THUR BOLT	27	61
10-31985	SCREW, TOP COVER TO DRIVE SHAFT HOUSING (1 1/4")	13	49	11-20645	NUT, STARTER SOLENOID TERMINAL (#10)	27	50
10-31985	SCREW, TOP COVER TO DRIVE SHAFT HOUSING (1 1/4")	19	21	11-20664	NUT, ADJUSTING SCREW	19	37
10-32995	SCREW, STTERING LEVER TO UPPER SWIVEL SHAFT (2")	5	22	11-20696	NUT, STEERING LEVER SCREW	5	23
10-34290	STARTER SOLENOID TO MOUNTING BRACKET (5/8")	27	64	11-21825	NUT, STARTER SOLENOID SCREW	27	66
10-34298	SCREW, ADJUSTING - SHIFT FORK (2 1/2")	19	32	11-21908	NUT, HYDRAULIC PUMP SCREW	27	35
10-34763	SCREW, INHIBITOR PLATE TO GIMBAL HOUSING (3/4")	9	45	11-22339	NUT, TRANSOM PLATE SCREW	3	14
10-36137	SCREW, CHECK VALVE COVER TO BELL HOUSING (1")	7	15	11-24652	NUT, LINK ROD ATTACHING	19	27
10-37978	SCREW, TRIM SENDER AND SWITCH TO GIMBAL RING (3/4")	5	13	11-25599	NUT, STEERING LEVER TO UPPER SWIVEL SHAFT	5	21
				11-27164	NUT, CONTROL PANEL STUD	25	19
				11-29250	NUT, EXHAUST COVER SCREW	3	18
				11-34388	NUT, HARNESS ATTACHING CLAMP SCREW	25	28
				11-34933	NUT, DRIVE SHAFT HOUSING STUD	11	6
				11-34933	NUT, DRIVE SHAFT HOUSING STUD	15	4
				11-34933	NUT, GEAR HOUSING SCREW	23	36
				11-35000	NUT, BE LL HOUSING STUD	7	7

PARTS INDEX

Part Number	Description	Pg.	Ref. No.	Part Number	Description	Pg.	Ref. No.
11-35000	NUT, GIMBAL RING ANCHOR PIN	29	13	12-47394	WASHER, GIMBAL RING ANCHOR PIN (33/64" I.D.)	29	12
11-35000	NUT, HOUSING TO TRANSOM PLATE STUD	3	8	12-47395	WASHER, DRIVE SHAFT HOUSING ANCHOR PIN (59/64" I.D.)	29	3
11-35304	NUT, PUMP MOUNTING BRACKET SCREW	27	32	12-47395	WASHER, GIMBAL RING ANCHOR PIN (59/64" I.D.)	29	9
11-35814	NUT, HYDRAULIC PUMP SCREW	25	15	12-47466	WASHER, FIBER-TRANSOM PLATE SCREW	3	11
11-35888	NUT, HYDRAULIC CONNECTOR STUD	9	54	12-54006	WASHER, UNIVERSAL JOINT	11	36
11-37984	NUT, JAM-CABLE GUIDE TUBE	3	21	12-54006	WASHER, UNIVERSAL JOINT	19	8
11-54034	NUT, PROPELLER	23	34	12-54012	WASHER, BELL HOUSING STUD	7	6
11-54046	NUT, REAR PINION GEAR	11	35	12-54017	WASHER, ADJUSTING SCREW	19	33
11-54046	NUT, REAR PINION GEAR	19	7	12-54019	WASHER, ANTI-GALLING-BELL HOUSING (HINGE PIN)	5	7
11-55819	NUT, PINION GEAR TO DRIVE SHAFT	21	9	12-54026	WASHER, UPPER SWIVEL SHAFT (2" O.D.)	5	18
11-55819	NUT, UNIVERSAL JOINT	11	37	12-54027	WASHER, UPPER SWIVEL SHAFT (1 5/8" O.D.)	5	19
11-55819	NUT, UNIVERSAL JOINT	19	9	12-54048	WASHER, PINION GEAR TO DRIVE SHAFT	21	8
11-55820	NUT, DRIVE GEAR TO DRIVE SHAFT	13	46	12-54049	WASHER, SPLINED - REAR PINION GEAR	19	6
11-55820	NUT, DRIVE GEAR TO DRIVE SHAFT	19	18	12-54049	WASHER, SPLINED-REAR PINION GEAR	11	34
11-57503	NUT, FRONT PINION GEAR	15	16	12-54250	WASHER, TRANSOM PLATE SCREW (1 1/8" I.D.)	3	10
12-20086	WASHER, LINK ROD	5	30	12-54351	WASHER, FIBER - THREADED BUSHING	19	30
12-20086	WASHER, LINK ROD BOLT	5	28	12-54351	WASHER, SEALING-PLUG BUSHING	11	21
12-20086	WASHER, THREADED BUSHING	19	31	12-54414	WASHER, DRIVE GEAR	13	45
12-20260	WASHER, SEAL - VENT SCREW	21	5	12-54414	WASHER, DRIVE GEAR	19	17
12-20260	WASHER, SEALING - FILLER SCREW	31	10	12-55072	WASHER, CUPPED - SPLINED WASHER	23	32
12-20260	WASHER, SEALING - HYDRAULIC PUMP FILLER SCREW	25	6	12-55073A1	WASHER ASSEMBLY, SPLINED	21	31
12-20260	WASHER, SEALING - VENT SCREW	15	7	12-56635A1	WASHER ASSEMBLY, CRANKSHIFT	17	42
12-20260	WASHER, SEALING-VENT SCREW	11	13	12-57502	WASHER, SPLINED - FRONT PINION GEAR	15	15
12-20546	WASHER, HYDRAULIC PUMP SCREW	25	14	13-21272	LOCKWASHER, CRANKSHIFT COVER SCREW	17	41
12-20546	WASHER, UPPER SWIVEL SHAFT RETAINING SCREW	5	10	13-22773	LOCKWASHER, PLUG COVER SCREW	11	11
12-24676	WASHER, CONTROL PANEL STUD	25	18	13-26992	LOCKWASHER, CHECK VALVE GUIDE COVER SCREW	7	16
12-29245	WASHER, PUMP MOUNTING BRACKET SCREW	27	39	13-26992	LOCKWASHER, CONTROL VALVE SCREW	25	10
12-33171	WASHER, TRANSOM PLATE SCREW (41/64" I.D.)	3	13	13-26992	LOCKWASHER, MOUNTING BRACKET SCREW	27	59
12-34876	WASHER, GIMBAL HOUSING TO TRANSOM PLATE STUD	3	7	13-26992	LOCKWASHER, STARTER SOLENOID SCREW	27	65
12-34966	WASHER, NYLON-LINK ROD BOLT	5	26				
12-39143	WASHER, ADJUSTING SCREW	19	36				
12-47394	WASHER, DRIVE SHAFT HOUSING ANCHOR PIN (33/64" I.D.)	29	6				

PARTS INDEX

Part Number	Description	Pg.	Ref. No.	Part Number	Description	Pg.	Ref. No.
13-26996	LOCKWASHER, STARTER SOLENOID TERMINAL (#10)	27	49	16-54674	STUD, DRIVE SHAFT HOUSING TO GEAR HOUSING (2 1/4")	15	3
13-26996	LOCKWASHER, THRU BOLT	31	19	16-55422	STUD, CONTROL PANEL TO BOAT (2")	25	17
13-26996	LOCKWASHER, TRIM SENDER AND SWITCH SCREW	5	14	16-56766	STUD, GIMBAL HOUSING TO HYDRAULIC CONNECTOR (1 2/8")	9	43
13-27660	LOCKWASHER, HYDRAULIC PUMP THRU BOLT	27	60	16-57418	STUD, BELL HOUSING TO DRIVE SHAFT HOUSING (5 1/4")	7	5
13-34846	LOCKWASHER, TRANSOM PLATE SCREW (DOUBLE WIND)	3	12	16-57982	STUD, GEAR HOUSING TO DRIVE SHAFT HOUSING (1 7/8")	21	2
13-39107	LOCKWASHER, HYDRAULIC PUMP SCREW	27	34	16-57988	STUD, GIMBAL HOUSING TO TRANSOM PLATE (5 3/8")	9	38
13-46917	LOCKWASHER, SEALING - VENT SCREW	25	4	17-47374	PIN, ANCHOR - GIMBAL RING (13 1/4")	29	8
13-46917	LOCKWASHER, SEALING - VENT SCREW	31	8	17-49279	PIN, ANCHOR - DRIVE SHAFT HOUSING (11 13/16")	29	2
13-54667	WASHER, WAVE-LINK ROD BOLT	5	27	17-54003	PIN, HINGE-GIMBAL RING TO HOUSING (6POINT SOCKET)	5	8
14-34817	TAB WASHER, PROPELLER NUT	23	33	17-54052	PIN, SWIVEL-GIMBAL HOUSING TO GIMBAL RING (LOWER)	9	55
14-54167	TAB WASHER, GEAR HOUSING COVER	21	28	17-59812	PIN, HINGE-GIMBAL RING TO HOUSING (12 POINT SOCKET)	5	8
15-39808A1	SHIM ASSEMBLY, ROLLER BEARING TO GEAR HOUSING (.002-3-5-10)	21	12	18-54929	COTTER PIN,RETAINING-LOWER SWIVEL PIN	9	56
15-39899A1	SHIM ASSEMBLY, ROLLER BEARING TO DRIVE SHAFT HOUSING (.002-	21	14	19-47579	PLUG, TRIM TAB HOLE - DRIVE SHAFT HOUSING	15	5
15-48920A1	SHIM, CRANKSHIFT PINION (.025)	17	44	19-47579	PLUG, TRIM TAP HOLE- DRIVE SHAFT HOUSING	11	7
15-54005A1	SHIM ASSEMBLY, THRUST RING TO GEAR HOUSING (.002-3-5-10)	21	20	20-48219	CHACK VALVE, OIL RELEASE	11	15
15-54008A1	SHIM ASSEMBLY, REAR COVER	19	10	20-48219	CHECK VALVE - OIL RELEASE	15	32
15-54008A1	SHIM ASSEMBLY, REAR COVER (.002-3-5-10)	11	38	20-48219	CHECK VALVE, OIL RELEASE	7	11
15-54008A1	SHIM ASSEMBLY, REAR PINION GEAR	19	2	22-23612	FITTING GREASE-GIMBAL RING	5	4
15-54008A1	SHIM ASSEMBLY, REAR PINION GEAR (.002-3-5-10)	11	31	22-23612	FITTING, GREASE-GIMBAL HOUSING	9	36
15-54009A1	SHIM ASSEMBLY, TAPERED ROLLER BEARING (.002-3-5-10)	19	14	22-32561	PLUG, PIPE-UPPER SWIVEL SHAFT	5	17
15-54009A1	SHIM ASSMBLY, TAPERED ROLLER BEARING (.002-3-510)	11	42	22-32803	PLUG, PIPE-BELL HOUSING CONNECTOR, CHECK VALVE GUIDE COVER	7	13
15-55499A1	SHIM ASSEMBLY, ROLLER BEARING TO GEAR HOUSING(.002-3-5-10)	21	17	22-34982	CONNECTOR, TRANSOM PLATE (OIL HOSE)	3	22
15-57423A1	SHIM ASSEMBLY, FRONT COVER (.002-3-5-10)	15	14	22-47902	VENT, OIL RESERVIOR (TRANSOM PLATE)	3	2
15-57423A1	SHIM ASSEMBLY, FRONT PINION GEAR (.002-3-5-10)	15	9	22-49718	NUT, COMPRESSION - HYDRAULIC TUBING ATTACHING	29	24
16-54011	STUD, BELL HOUSING TO DRIVE SHAFT HOUSING (3 1/4")	7	5	22-52666	ELBOW, CONTROL VALVE	25	8

PARTS INDEX

Part Number	Description	Pg.	Ref. No.	Part Number	Description	Pg.	Ref. No.
23-53999	SPACER, TAPERED ROLLER BEARING CUPS	19	5	25-54029	"O" RING, GEAR HOUSING (3" O.D.)	21	6
23-54002	BUSHING, GIMBAL RING (HINGE PIN)	5	6	25-54030	"O" RING, GEAR HOUSING (3 3/16" O.D.)	21	11
23-54015	SPACER, ADJUSTING SCREW	19	34	25-54031	"O" RING TOP COVER	13	47
23-54349	BUSHING, THREADED - SHIFT SHAFT ATTACHING	19	29	25-54031	"O" RING, TOP COVER	19	19
23-54349	BUSHING, PLUG-DRIVE SHAFT HOUSING	11	20	25-54521	"O" RING, GIMBAL HOUSING	9	41
23-55237	BUSHING, CRANKSHIFT GEAR - FRONT COVER	15	22	25-57413	"O" RING, DRIVE SHAFT HOUSING	15	12
23-55238	BUSHING, CRANKSHIFT PINION - FRONT COVER	15	23	25-57414	"O" RING, FRONT COVER (1 1/2" I.D.)	15	21
23-61291	BUSHING, RUBBER - DRIVE SHAFT HOUSING ANCHOR PIN	29	5	26-31783	OIL SEAL, LOWER GIMBAL HOUSING ROLER BEARING	7	32
23-61291	BUSHING, RUBBER - GIMBAL RING ANCHOR PIN	29	11	26-31783	OIL SEAL, LOWER GIMBAL HOUSING ROLLER BEARING	7	32
24-48442	SPRING, TENSION - OIL RELEASE CHECK VALVE	15	34	26-38105	OIL SEAL, DRIVE SHAFT HOUSING	11	3
24-48442	SPRING, TENSION-OIL RELEASE CHECK VALVE	7	9	26-48443	OIL SEAL, BELL HOUSING	7	3
24-48442	SPRING, TENSION-OIL RELEASE CHECK VALVE	11	14	26-48443	OIL SEAL, BELL HOUSING	7	3
24-49593	SPRING, DRIVE SHAFT HOUSING ANCHOR PIN	29	4	26-54925	OIL SEAL, UPPER GIMBAL HOUSING ROLLER BEARING	7	34
24-49593	SPRING, GIMBAL RING ANCHOR PIN	29	10	26-54926	OIL SEAL, BEARING CARRIER	21	26
24-58394	SPRING, ADJUSTING SCREW	19	35	26-54927	OIL SEAL, GIMBAL RING	5	2
25-21720	"O" RING, HYDRAULIC PUMP	31	1	26-56768	OIL SEAL, FRONT COVER	15	18
25-21720	"O" RING, HYDRAULIC PUMP TO CONTROL VALVE	25	2	27-47644	GASKET, HYDRAULIC CONNECTOR	9	53
25-21720	"O" RING, HYDRAULIC PUMP TO CONTROL VALVE	25	7	27-54014	GASKET, BELL HOUSING TO DRIVE SHAFT HOUSING	7	8
25-25439	"O" RING, UNIVERSAL JOINT	11	24	27-54020	GASKET, CHECK VALVE GUIDE	15	31
25-32068	"O" RING, DRIVE SHAFT HOUSING	11	4	27-54021	GASKET, CHECK VALVE GUIDE COVER	7	14
25-32068	"O" RING, FRONT COVER (4 1/8" I.D.)	15	19	27-54307	GASKET, OIL RESERVIOR COVER	3	4
25-34821	"O" RING, BEARING CARRIER	21	22	27-54395	GASKET, GIMBAL HOUSING TO TRANSOM	9	40
25-39695	"O" RING, REAR COVER	11	39	27-57506	GASKET, CRANKSHIFT COVER	15	39
25-39695	"O" RING, REAR COVER	19	11	28-30281	KEY, LOCATING - BEARING CARRIER	21	27
25-45711	"O" RING, FRONT COVER (5/8" I.D.)	15	20	31-21145	BEARING, ROLLER-GIMBAL HOUSING (UPPER)	9	35
25-47632	"O" RING, CRANKSHIFT COVER	15	37	31-47669A1	TAPERED ROLLER BEARING ASSEMBLY, DRIVE SHAFT	21	13
25-47632	"O" RING, PLUG COVER	11	9	31-53780	ROLLER BEARING, DRIVE SHAFT	21	3
25-48452	QUAD RING, OIL RELEASE CHECK VALVE	7	10	31-54036A1	TAPERED ROLLER BEARING ASSEMBLY	21	23
25-48452	QUAD RING, OIL RELEASE CHECK VALVE	11	16	31-54038A1	TAPERED ROLLER BEARING ASSEMBLY, PROPELLER GEAR	21	18
25-48452	QUAD RING, OIL RELEASE CHECK VALVE	15	33	31-54038A2	TAPERED ROLLER BEARING ASSEMBLY, REAR PINION GEAR	11	32

PARTS INDEX

Part Number	Description	Pg.	Ref. No.	Part Number	Description	Pg.	Ref. No.
31-54042	ROLLER BEARING, BEARING CARRIER	21	25	38-55823	DECAL, INSTRUCTIONS - HYDRAULIC PUMP	25	11
31-54043	BEARING, ROLLER-GIMBAL HOUSING (LOWER)	7	33	43-54399	GEAR, DRIVE - DRIVE SHAFT	19	16
31-54928	ROLLER BEARING, GIMBAL RING (SWIVEL PIN)	5	3	43-54399	GEAR, DRIVE-DRIVE SHAFT	13	44
31-55466A1	TAPERED ROLLER BEARING ASSEMBLY, DRIVE GEAR	13	43	43-54401A2	GEAR ASSEMBLY, PINION-UNIVERSAL JOINT (REAR)	11	30
31-55466A1	TAPERED ROLLER BEARING ASSEMBLY, DRIVE GEAR	19	15	43-54402A2	GEAR ASSEMBLY (DRIVE AND PINION)	21	7
31-55831	ROLLER BEARING, ADAPTOR	11	29	43-57501A1	GEAR ASSEMBLY, PINION -UNIVERSAL JOINT (FRONT)	15	10
31-57410	ROLLER BEARING, FRONT PINION GEAR	15	11	43-58854A1	GEAR ASSEMBLY, PINION - UNIVERSAL JOINT (REAR)	19	3
31-57411A2	TAPERED ROLLER BEARING ASSEMBLY, FRONT PINION GEAR	15	13	44-54255	PROPELLER SHAFT	21	19
32-34423A1	HOSE, OIL-BELL HOUSING TO GIMBAL HOUSING (12 5/8")	7	19	45-54396	DRIVE SHAFT	21	10
32-34423A1	HOSE, OIL-GIMBAL HOUSING TO TRANSOM PLATE (7 3/4")	9	50	52-58312	RATCHET, SLIDING CLUTCH	19	22
32-35015	TUBE, CABLE GUIDE	3	20	54-31765	CLAMP, BELLOWS TO GIMBAL HOUSING AND BELL HOUSING	7	22
32-47373	HOSE, HYDRAULIC - CONNECTOR TO TRIM CYKINDER (12 1/2")	29	14	54-31766	CLAMP, BELLOWS ATTACHING-LARGE END	7	28
32-52951A1	TUBING ASS Y, HYDRAULIC PUMP TO REVERSE LOCK VALVE (15")	29	23	54-31766	CLAMP, SEALING CAP TO GIMBAL HOUSING	9	58
32-54392	TUBE, OIL-GIMBAL HOUSING	9	46	54-38863	CLAMP, BELOWS ATTACHING-SMALL END .	7	29
32-54408	TUBING, HYDRAULIC - LOWER CONNECTOR TO UPPER CONNECTOR . . .	29	16	54-38889	CLAMP, EXHAUST BELLOWS ATTACHING . .	7	24
32-54409	TUBING, HYDRAULIC - LOWER CONNECTOR TO UPPER CONNECTOR . . .	29	15	54-46770	CLAMP, HARNESS ATTACHING	25	26
32-55496A1	TUBE ASSEMBLY, CRANKSHIFT SHAFT	7	26	54-54428	CLAMP, OIL HOSE TO BELL HOUSING AND GIMBAL HOUSING	7	20
32-56287A1	HOSE, HYDRAULIC - CONNECTOR TO VALVE (15")	29	21	54-54428	CLAMP, OIL HOSE TO GIMBAL HOUSING AND TRANSOM PLATE	9	51
32-57830	HOSE, HYDRAULIC - CONNECTOR TO PUMP (11 3/4")	29	22	54-54930	CLAMP, HYDRAULIC TUBING TO GIMBAL HOUSING	29	17
32-57833	HOSE, HYDRAULIC - CONNECTOR TO VALVE (12 3/4")	29	21	278-54020	GASKET, CHECK VALVE GUIDE	11	18
32-58431A1	HOSE, HYDRAULIC - CONNECTOR TO PUMP (44")	29	22	392-2529	SPRING SET, BUSH TENSION	31	17
32-58432A1	TUBING ASS Y, HYDRAULIC PUMP TO REVERSE LOCK VALVE (49")	29	23	392-2618	CAM, VALVE BODY	31	3
37-39395	DECAL, SERIAL NUMBER	3	--	392-2623	WASHER, THRUST - ARMATURE	31	11
37-56081A1	DECAL SET, DRIVE SHAFT HOUSING	13	50	392-2936	VALVE BODY AND GEAR ASSEMBLY	31	2
37-56081A1	DECAL SET, DRIVE SHAFT HOUSING	15	8	392-2937	SEAL, RESERVIOR TO VALVE BODY AND GEAR	31	5
				392-2938	BOLT SET, THRU - PLATE AND FRAME TO RESERVIOR	31	18
				392-2939	RESERVIOR ASSEMBLY	31	6
				392-2940	PLATE ASSEMBLY, COMMUTATOR END	31	15
				392-2941	BRUSH SET, COMMUTATOR END PLATE	31	16
				392-2942	FIELD AND FRAME ASSEMBLY	31	13

PARTS INDEX

Part Number	Description	Pg.	Ref. No.	Part Number	Description	Pg.	Ref. No.
392-2943	ARMATURE, FIELD AND FRAME	31	12				
392-2944	BALL, COMMUTATOR END PLATE	31	14				
1571-3766A1	DRIVE SHAFT HOUSING ASSEMBLY	11	1				
1571-4113A1	DRIVE SHAFT HOUSING ASSEMBLY	15	1				
1571-4113A1	DRIVE SHAFT HOUSING ASSEMBLY	19	1				
1641-3767A1	GEAR HOUSING ASSEMBLY (HYDRAULIC SHIFT)	21	1				
1641-3767A3	GEAR HOUSING ASSEMBLY, COMPLETE (HYDRAULIC SHIFT)	21	-				
1641-4187A1	GEAR HOUSING ASSEMBLY(ELECTRIC SHIFT)	21	1				
1641-4187A4	GEAR HOUSING ASSEMBLY, COMPLETE (ELECTRIC SHIFT)	21	-				