



PARTS CATALOG

MERC 110

SERIAL NUMBER

110 2798057 THRU 3263262

TABLE OF CONTENTS:

BOTTOM COWL AND ADAPTOR PLATE	26
CARBURETOR ASSEMBLY	10
CARBURETOR CHOKE LINKAGE	12
CLAMP AND SWIVEL BRACKET ASSEMBLY	34
CRANKSHAFT AND MAIN BEARING ASSEMBLY	22
CYLINDER BLOCK AND CRANKCASE ASSEMBLY	20
DRIVE SHAFT HOUSING ASSEMBLY	32
FLYWHEEL, STATOR AND IGNITION COIL	6
FUEL PUMP ASSEMBLY	14
GEAR HOUSING ASSEMBLY, COMPLETE (PAGE 1)	38
GEAR HOUSING ASSEMBLY, COMPLETE (PAGE 2)	42
MISCELLANEOUS PARTS/ACCESSORIES	1
PARTS INDEX	46
PISTON AND CONNECTING ROD ASSEMBLY	24
SHIFT CONTROL LINKAGE	16
STEERING HANDLE ASSEMBLY	30
THROTTLE CONTROL LINKAGE	18
TOP COWL AND STARTER ASSEMBLY	2

NOTE: *Indented description indicate that these parts are included in preceeding assembly.*

AR = As Required

NSS = Not Sold Separate

OPT = Optional

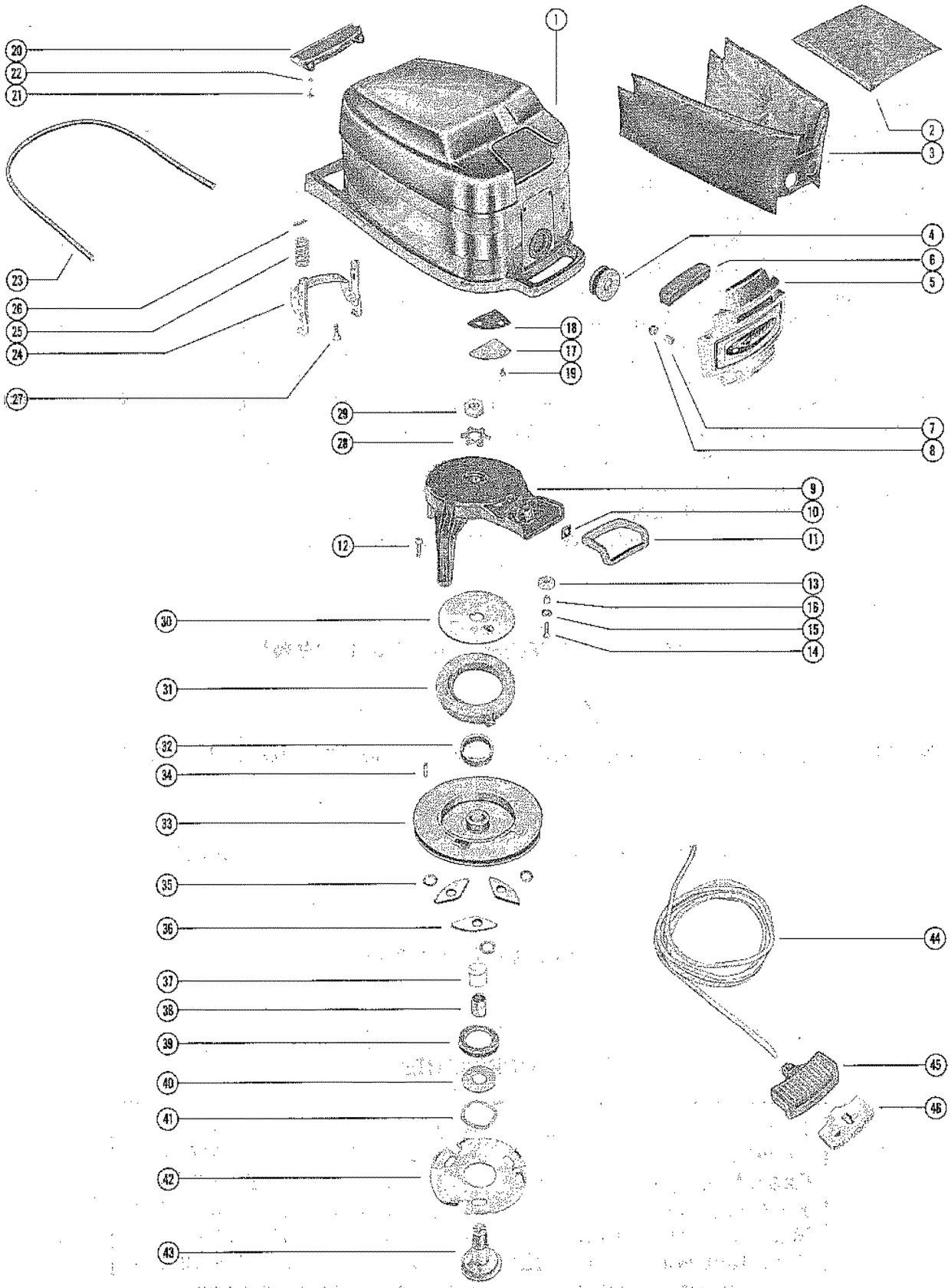
NS = Not Shown

THESE PARTS BOOKS/FICHE CARD ARE COPYRIGHTED AND MAY NOT BE DISTRIBUTED OR REPRODUCED IN ANY OTHER FORMAT BY ANYONE OTHER THAN MERCURY MARINE WITHOUT THE PRIOR WRITTEN CONSENT OF MERCURY MARINE.

MISCELLANEOUS PARTS/ACCESSORIES

REF. NO.	PART NO.	SYM.	QTY.	DESCRIPTION
-	37-56629A1		0	DECAL SET SERIAL 02798057-02938830
-	37-56629A2		0	DECAL SET SERIAL 03002814-09999999
-	27-46233A2		0	GASKET SET (MOTOR OVERHAUL)
-	24789A1		0	FLUSHING ASSEMBLY
-	90-59344		0	MERC 110 PARTS LIST
-	46-46893A2		0	RESISTANT WATER PUMP

TOP COWL AND STARTER ASSEMBLY

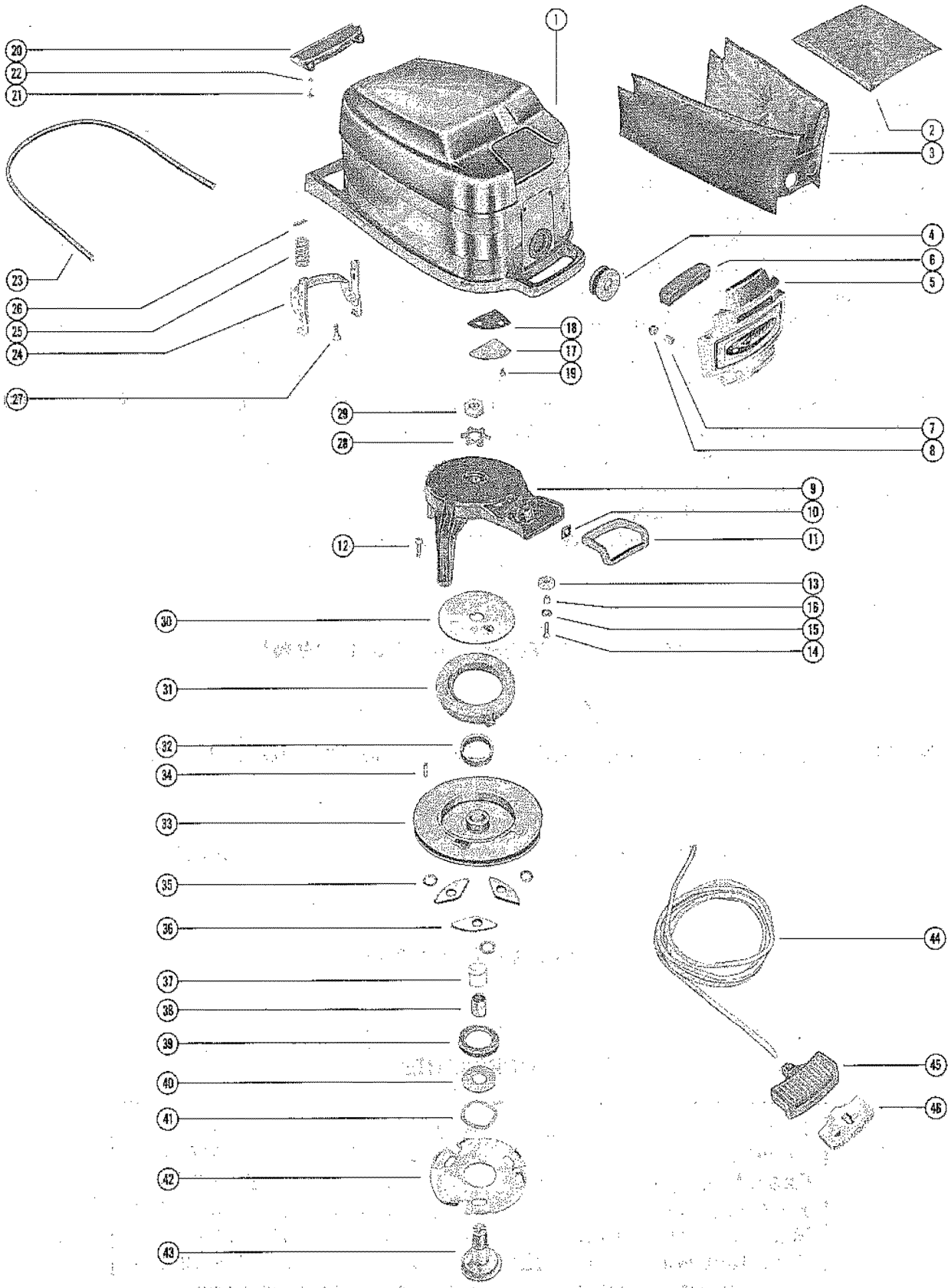


TOP COWL AND STARTER ASSEMBLY

REF. NO.	PART NO.	SYM.	QTY.	DESCRIPTION
1	2123-3668		1	COWL, TOP
2	39080		1	BLANKET, SOUND ABSORBING-TOP COWL-TOP
3	39071		1	BLANKET, SOUND ABSORBING - TOP COWL
4	25-39086		1	GROMMET, COWL LATCH - TOP COWL
5	2128-2667A8		1	COVER ASSEMBLY, FRONT
6	39039		1	STRIP, RUBBER - FRONT COVER
7	23-39578		2	SPACER, FRONT COVER STUD
8	11-20361		2	NUT, FRONT COVER STUD
9	39880A3		1	STARTER HOUSING ASSEMBLY(SERIAL #2798057 THRU #2938830)
	58114A2		1	STARTER HOUSING ASSEMBLY(SERIAL #3002814 AND UP)
10	57821		1	GUIDE, ROPE - STARTER HOUSING
11	39043		1	SEAL, STARTER HOUSING TO TOP COWL
12	10-46962		2	SCREW, STARTER HOUSING TO CRANKCASE(1")
	10-56354		1	SCREW, STARTER HOUSING TO CYLINDER BLOCK(1 1/4")
13	55860		1	PULLEY, STARTER CABLE
14	10-28789		1	SCREW, CABLE PULLEY TO STARTER HOUSING(3/4")
15	12-22887		1	WASHER, CABLE PULLEY SCREW
16	23-30977		1	SPACER, CABLE PULLEY
17	39084		2	PLATE, SEAL - TOP COWL
18	39093		2	SEAL, TOP COWL PLATE
19	10-30009		4	SCREW, PLATE AND SEAL TO TOP COWL(3/8")
20	39027		1	SHIELD, TOP COWL - REAR
21	10-20646		3	SCREW, REAR SHIELD TO TOP COWL (5/8")
22	13-26996		3	LOCKWASHER, REAR SHIELD SCREW
23	56377		1	SEAL, TOP COWL (42")
24	39088A1		1	COWL LATCH ASSEMBLY, TOP COWL
25	21-59174		2	SPRING, COMPRESSION - COWL LATCH
26	17-39095		2	PIN, ROLL - SPRING TO COWL LATCH
27	10-34439		3	SCREW LATCH TO TOP COWL (3/4")
28	14-20165		1	TAB WASHER, SHEAVE SHAFT NUT
29	11-20166		1	NUT, SHEAVE SHAFT (LEFT HAND THREAD)
30	20155		1	RETAINER, STARTER SPRING
31	24-45073A1		1	SPRING STARTER REWIND
32	23-28912		1	BUSHING, STARTER SPRING GUIDE
33	50-30594A1		1	STARTER SHEAVE ASSEMBLY
34	17-22896		1	PIN, RETAINER - STARTER CABLE
35	13-36206		3	WASHER, WAVE - STARTER PAWL
36	30596		3	PAWL, STARTER
37	23-28919		1	BUSHING, NYLON - SHEAVE SHAFT SPACER
38	23-35560		1	SPACER, SHEAVE SHAFT
39	26179		1	RETAINER, SHEAVER SHAFT TO STARTER SHEAVE
40	12-35559		1	WASHER, SHEAVE SHAFT RETAINER

CONTINUED ON NEXT PAGE ➡

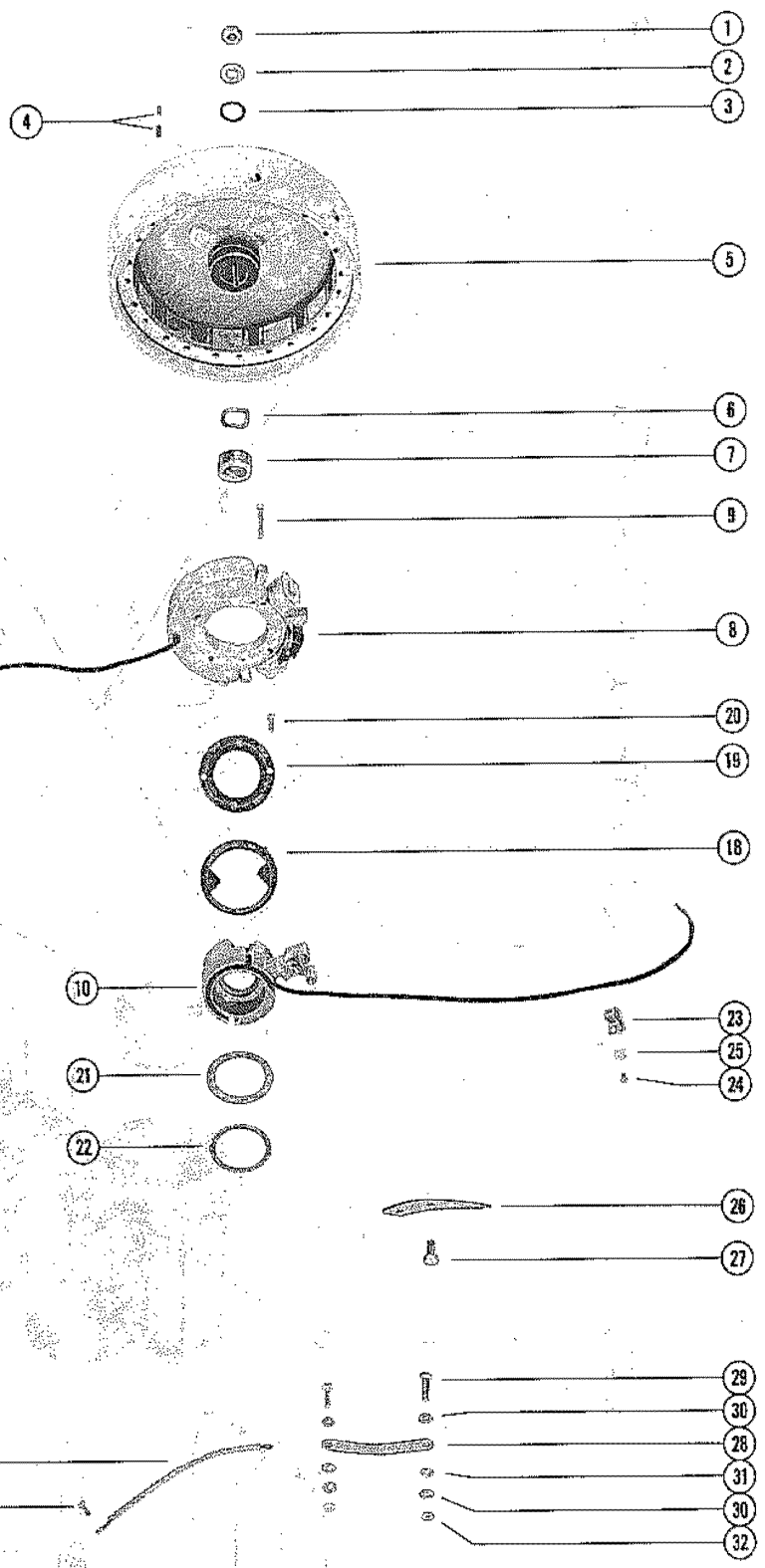
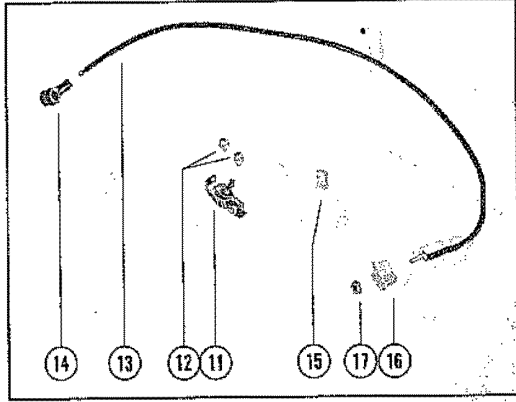
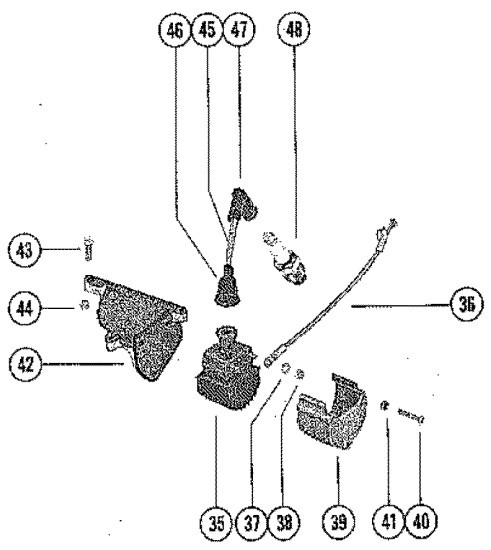
TOP COWL AND STARTER ASSEMBLY



TOP COWL AND STARTER ASSEMBLY

REF. NO.	PART NO.	SYM.	QTY.	DESCRIPTION
41	13-20160		1	WASHER, WAVE - RETAINER TENSION
42	30595		1	PLATE, REAINER - STARTER PAWL
43	35558		1	SHAFT, SHEAVE
44	50-30823A1		1	STARTER CABLE ASSEMBLY
45	30782		1	HANDLE, STARTER CABLE
46	28748		1	RETAINER, STARTER CABLE AND HANDLE

FLYWHEEL, STATOR AND IGNITION COIL

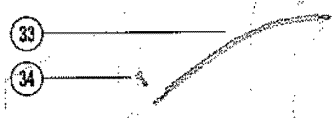
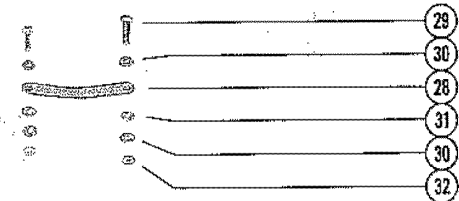
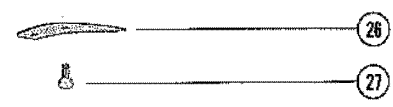
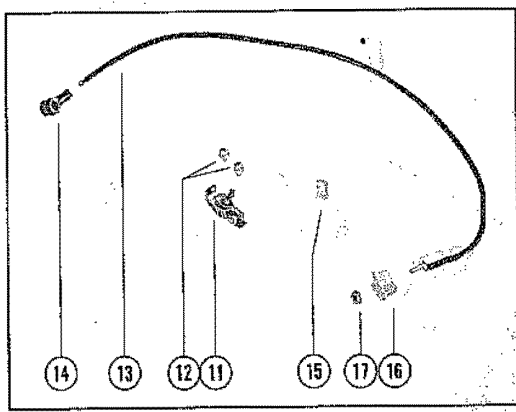
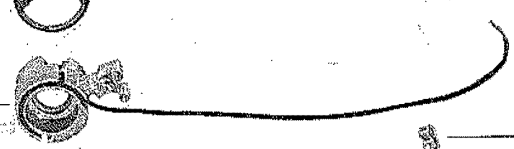
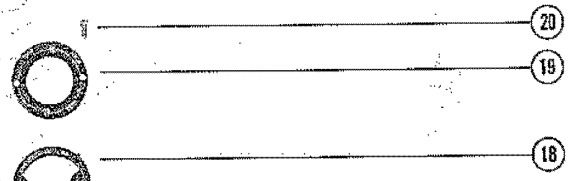
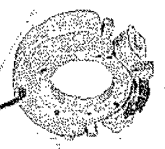
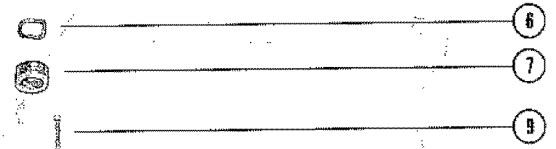
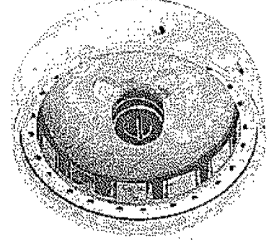
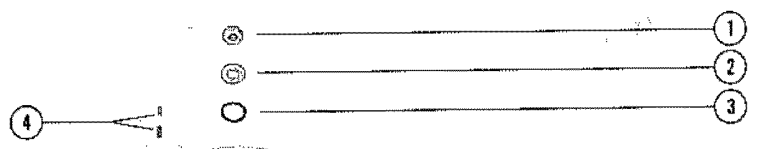
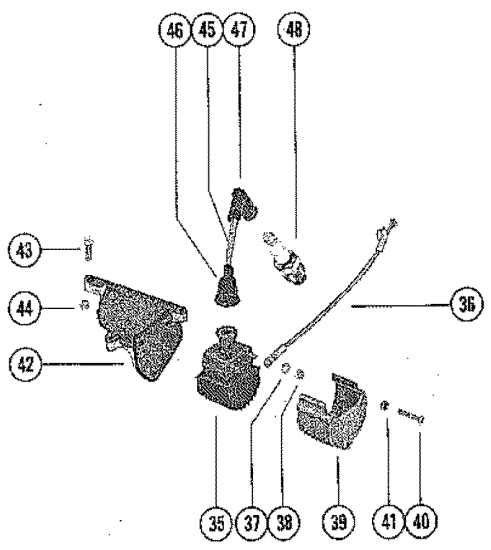


FLYWHEEL, STATOR AND IGNITION COIL

REF. NO.	PART NO.	SYM.	QTY.	DESCRIPTION
1	11-20696		1	NUT, FLYWHEEL
2	12-36282		1	WASHER, FLYWHEEL NUT
3	25-36284		1	"O" RING, FLYWHEEL NUT
4	28-20094		2	KEY, FLYWHEEL DRIVE
5	239-4174A1		1	FLYWHEEL ASSEMBLY
6	13-35629		1	WASHER, WAVE - CAM TENSION
7	336-3928		1	CAM, BREAKER
8	336-3996A4		1	STATOR ASSEMBLY SERIAL #2798057-02938830
	336-3996A7		1	STATOR ASSEMBLY SERIAL #3002814-09999999
9	10-57814		4	SCREW, STATOR TO END CAP (1 1/4")
10	336-3979A1		1	HOUSING ASSEMBLY, CONTACT
11	336-4318A3		2	BREAKER ASSEMBLY, CONTACT HOUSING
12	10-56266		4	SCREW, BREAKER TO CONTACT HOUSING (3/8")
13	56316A2		1	CABLE ASSEMBLY, CONTACT HOUSING (WHITE - 17")
	56317A1		1	CABLE ASSEMBLY, CONTACT HOUSING (BROWN - 17 3/4")
14	38938		2	BOOT, CABLE
15	336-3989		1	WICK, CAM WIPER - CONTACT HOUSING
16	336-3981		2	INSULATOR, CABLE TO CONTACT HOUSING
17	11-56325		2	NUT, CABLE INSULATOR
18	336-3987		1	HOLDER, CONTACT HOUSING SERIAL #2798057-02938830
	336-4429		1	HOLDER, CONTACT HOUSING SERIAL #2798057-09999999
19	336-3988A1		1	COVER ASSEMBLY, CONTACT HOUSING
20	10-56336		2	SCREW, COVER TO CONTACT HOUSING (1/2")
21	12-56077		1	WASHER, WEAR - CONTACT HOUSING TO UPPER BEARING HSG.
22	13-56076		1	WASHER, WAVE - CONTACT HOUSING TO UPPER BEARING HSG. SERIAL 02798057-29388830
	13-59145		1	WASHER, WAVE - CONTACT HOUSING TO UPPER BEARING HSG. SERIAL 03002814-09999999
23	545-26550		1	CLIP, CONTACT HOUSING AND STATOR LEADS
24	10-30663		1	SCREW, CONTACT HOUSING AND STATOR LEADS CLIP ATTACHING
25	22789		1	"D" WASHER, CLIP SCREW
26	36000		1	CAM, THROTTLE
27	10-28707		2	SCREW, THROTTLE CAM TO CONTACT HOUSING (1/2")
28	34361		1	LINK, THROTTLE
29	10-34696		2	SCREW, THROTTLE LINK TO THROTTLE LEVER AND CONTACT HOUSING (
30	12-34392		4	WASHER, THROTTLE LINK SCREW
31	13-29720		2	WASHER, WAVE - THROTTLE LINK SCREW
32	11-28656		2	NUT, THROTTLE LINK SCREW
33	56757A1		1	JUMPER WIRE ASSEMBLY, STATOR TO THROTTLE LINK
34	10-25256		1	SCREW, JUMPER WIRE ATTACHING (5/16")
35	336-3955A1		2	COIL ASSEMBLY, IGNITION (SERIAL #2798057 THRU 2938830)

CONTINUED ON NEXT PAGE ➡

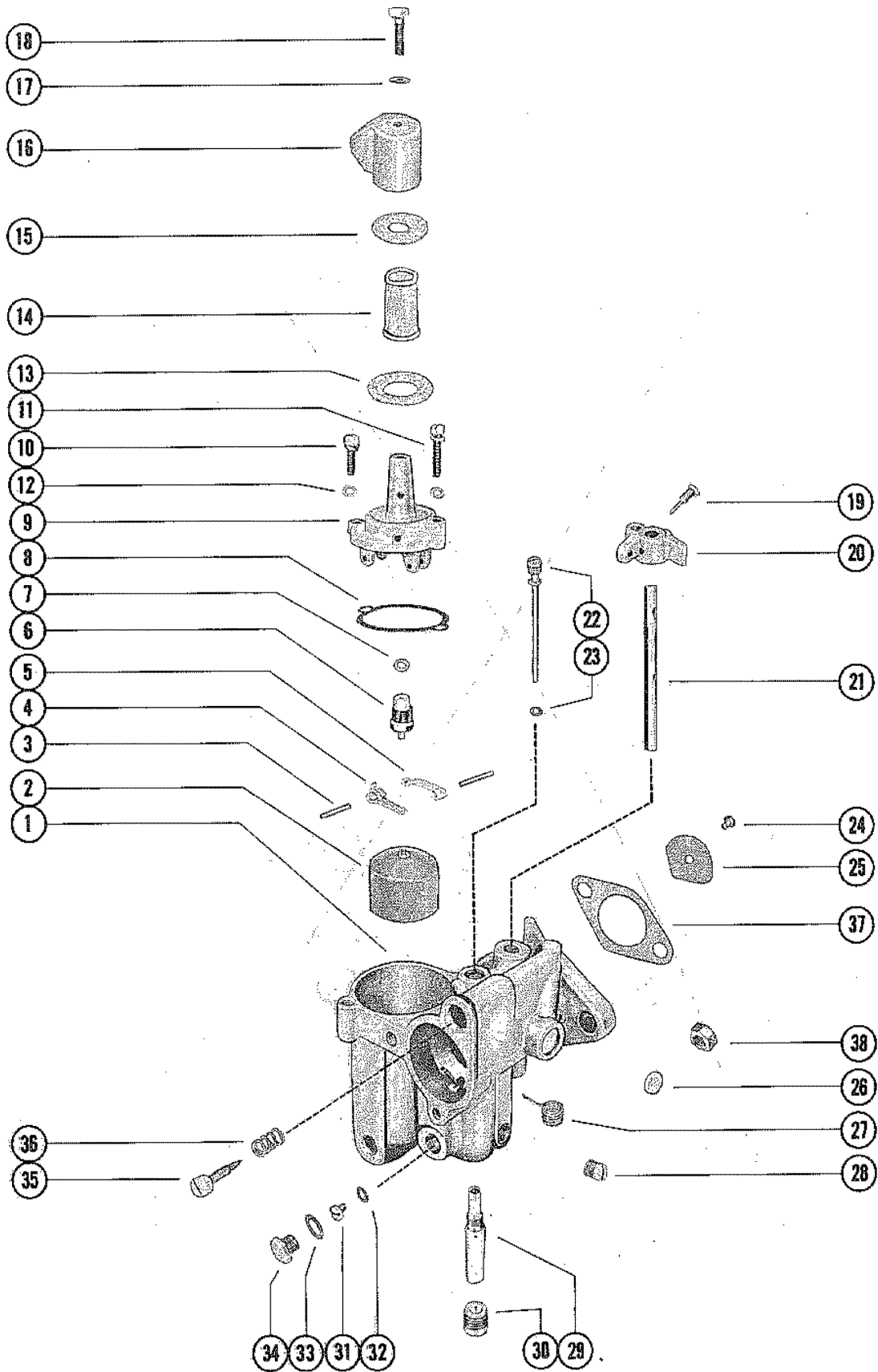
FLYWHEEL, STATOR AND IGNITION COIL



FLYWHEEL, STATOR AND IGNITION COIL

REF. NO.	PART NO.	SYM.	QTY.	DESCRIPTION
35	336-4409A1		2	COIL ASSEMBLY, IGNITION (SERIAL #3002814 AND UP)
36	56318A4		1	JUMPER WIRE ASSEMBLY, COIL TO COIL (8")
37	13-26996		4	LOCKWASHER, IGNITION COIL TERMINAL
38	11-45076		4	NUT, IGNITION COIL TERMINAL
39	56188		2	COVER, IGNITION COIL
40	10-56543		6	SCREW, COIL COVER TO COIL MOUNTIN BRACKER (2 1/8")
41	11-27164		6	NUT, COIL COVER SCREW
42	56352		1	BRACKET, COIL SUPPORT
43	10-31294		2	SCREW, BRACKER TO CYLINDER BLOCK (1")
44	11-46887		2	NUT, BRACKER SCREW
45	47899A9		2	LEAD ASSEMBLY, HIGH TENSION
46	332-2854		2	NIPPLE, IGNITION COIL
47	47604A1		2	PROTECTOR ASSEMBLY, SPARK PLUG
48	33-58194		2	SPARK PLUG (AC #V10FFK)

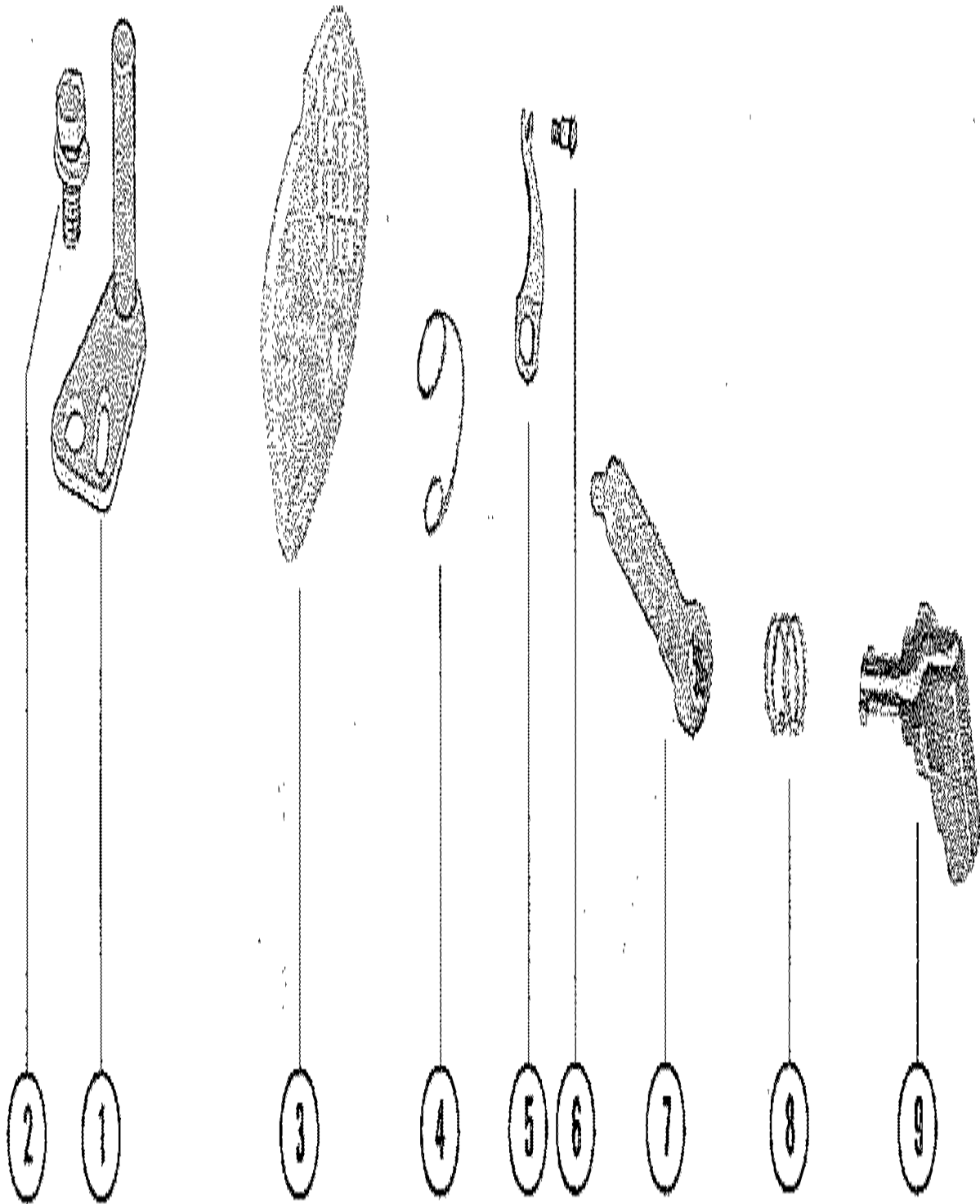
CARBURETOR ASSEMBLY



CARBURETOR ASSEMBLY

REF. NO.	PART NO.	SYM.	QTY.	DESCRIPTION
1	1334-4106		1	CARBURETOR ASSEMBLY, COMPLETE (KB-11A)
2	1399-110A1		1	FLOAT ASSEMBLY
3			2	PIN, FLOAT LEVER PINION
4			1	LEVER, FLOAT (LOWER)
5			1	LEVER, FLOAT (UPPER)
6	1399-1138		1	INLET NEEDLE, SEAT AND GASKET
7			1	GASKET, INLET SEAT
8			1	GASKET, FLOAT BOWL COVER
9	1399-1133		1	COVER, FLOAT BOWL
10	10-52195		1	SCREW, FLOAT BOWL COVER (SHORT)
11	10-52196		1	SCREW FLOAT BOWL COVER (LONG)
12	13-26995		2	LOCKWASHER, FLOAT BOWL COVER SCREW
13			1	GASKET, STRAINER COVER (LARGE)
14	1399-1754		1	SCREEN, FILTER
15			1	GASKET, STRAINER COVER (SMALL)
16	1399-3690		1	COVER, STRAINER
17			1	GASKET, STRAINER COVER SCREW
18	10-25822		1	SCREW, STRAINER COVER
19	10-20847		1	SCREW, THROTTLE STOP LEVER
20	1399-97		1	LEVER, THROTTLE STOP
21	1399-1716		1	SHAFT, THROTTLE
22			1	TUBE, IDLE
23			1	GASKET, IDLE TUBE
24			1	SCREW/LOCKWASHER, THROTTLE SHUTTER
25	1399-3763		1	SHUTTER, THROTTLE
26			1	WELCH PLUG, BODY CHANNEL
27			1	SPRING, TROTTLE SHAFT RETURN
28	10-28845		1	SCREW, PLUG - BODY CHANNEL
29			1	MAIN NOZZLE
30	10-23178		1	SCREW, PLUG - MAIN NOZZLE
31	1399-1767		1	JET, MAIN FUEL (.047) - STANDARD
	1399-1765		OPT.	JET MAIN FUEL (.045)
	1399-1864		OPT.	JET, MAIN FUEL (.043)
32			1	GASKET, MAIN FULE JET
33			1	GASKET, JET CHANNEL PLUG SCREW
34	10-28405		1	SCREW, PLUG - MAIN FUEL JET CHANNEL
35	1399-3740		1	SCREW, IDLE ADJUSTMENT
36			1	SPRING IDLE ADJUSTMENT SCREW
-	1399-1717		1	GASKET AND PACKING SET
-	1399-4206		1	REPAIR PARTS KIT
37	27-22023		1	GASKET, CARBURETOR FLANGE
38	11-46887		2	NUT, CARBURETOR MOUNTING STUDS

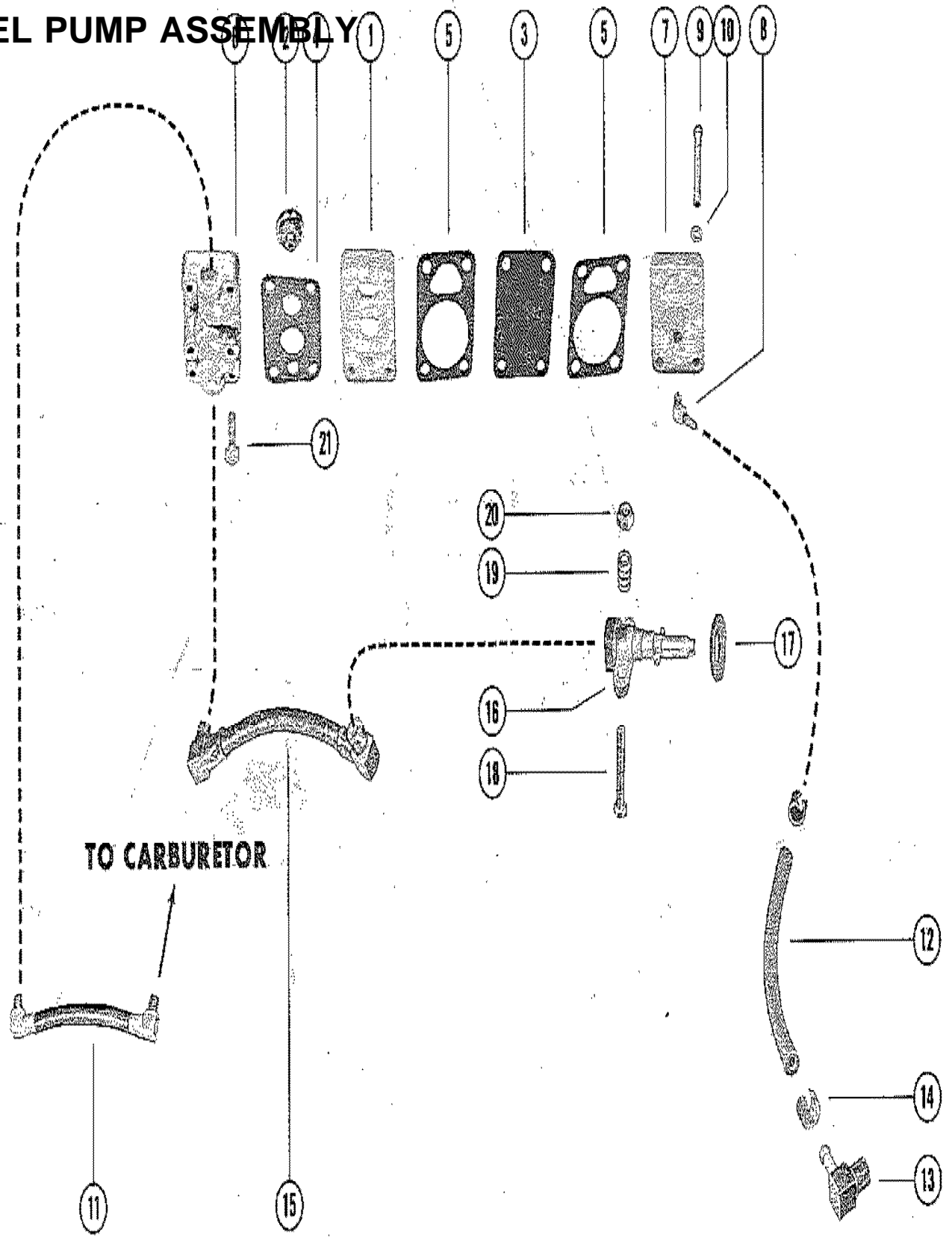
CARBURETOR CHOKE LINKAGE



CARBURETOR CHOKE LINKAGE

REF. NO.	PART NO.	SYM.	QTY.	DESCRIPTION
1	20596A2		1	THROTTLE LEVER ASSEMBLY SERIAL #2798057-02938830
2	10-29239		1	SCREW, THROTTLE LEVER CARBURETOR (1/2") SERIAL #2798057-02938830
1	59000		1	THROTTLE LEVER SERIAL #3002814-09999999
2	10-20597		1	SCREW, THROTTLE LEVER TO CARBURETOR (3/8") SERIAL #3002814-09999999
3	53191		1	SHUTTER AND SCREEN - CARBURETOR
4	24-53310		1	SPRING, CHOKE SHUTTER TO LEVER
5	24-55299A1		1	SPRING ASSEMBLY, CHOKE SHUTTER
6	10-55298		1	SCREW, SPRING TO CARBURETOR
7	53188		1	LEVER, CHOKE SHUTTER
8	24-53190		1	SPRING, TENSION - CHOKE LEVER SHAFT
9	53200		1	KNOB AND SHAFT - CHOKE

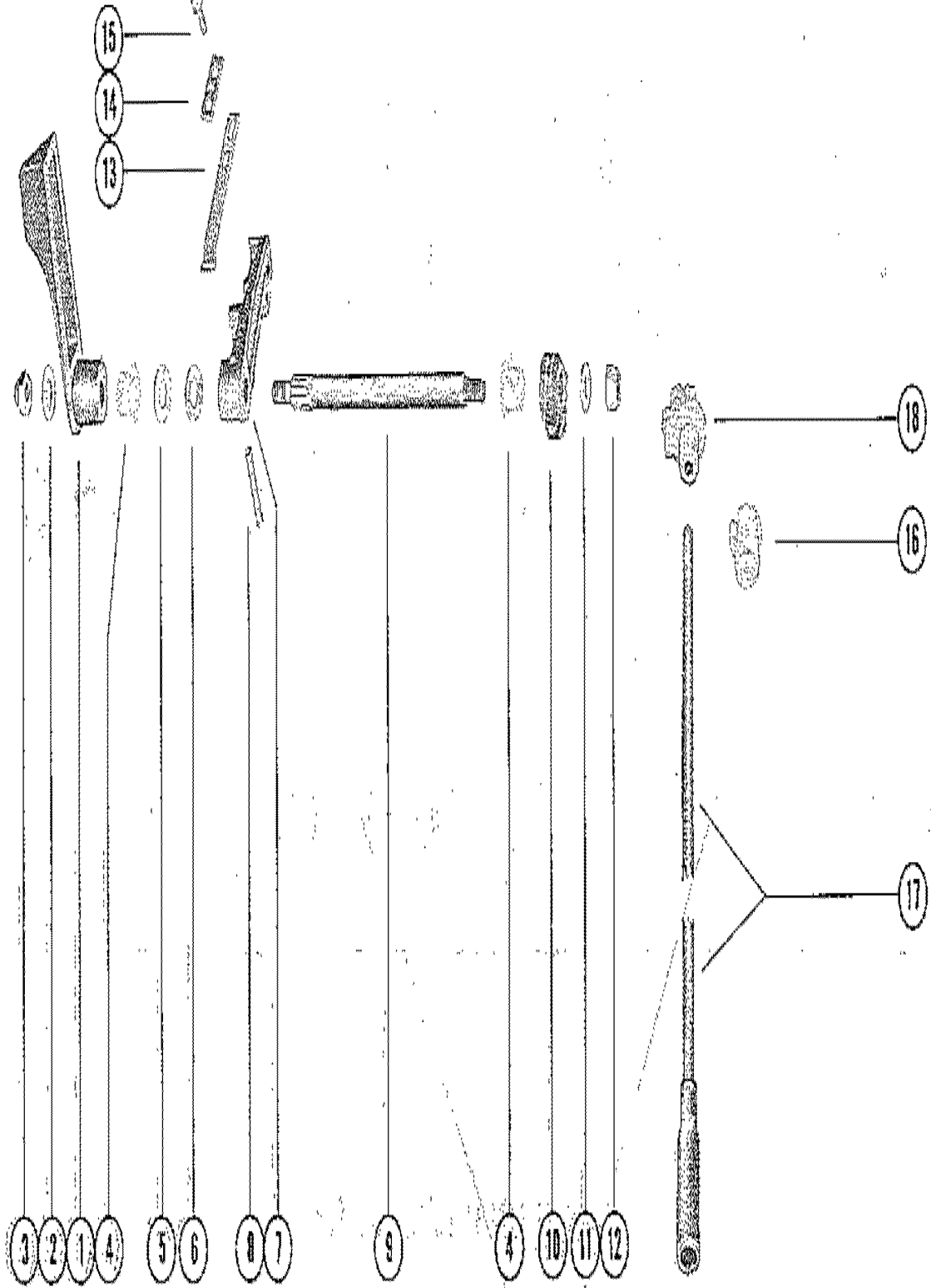
FUEL PUMP ASSEMBLY



FUEL PUMP ASSEMBLY

REF. NO.	PART NO.	SYM.	QTY.	DESCRIPTION
1	53238A3		1	FUEL PUMP ASSEMBLY
2	21-30430A2		1	CHECK VALVE ASSEMBLY
3	53245A1		1	DIAPHRAGM KIT, FUEL PUMP
4			1	GASKET, FUEL PUMP TO BASE
5			2	GASKET, FUEL PUMP
6	53241		1	BASE, FUEL PUMP
7	54066		1	COVER, FUEL PUMP
8	22-54090		1	ELBOW, FUEL PUMP OUTLET
9	10-32627		4	SCREW, FUEL PUMP TO BASE
10	12-20128		4	WASHER, FUEL PUMP SCREW
11	32-56341		1	FUEL LINE, FUEL PUMP TO CARBURETOR (5")
12	32-52742A1		1	HOSE, PRESSURE - FUEL PUMP (7 1/8")
13	22-53553		1	ELBOW, CYLINDER LBOCK TO PRESSURE HOSE (45)
14	54-20387		2	CLAMP, PRESURE HOSE FASTENING
15	32-39485		1	FUEL LINE, FUEL PUMP TO ADAPTOR (5 1/4")
16	32454		1	ADAPTOR, CHEKC UNIT (FUEL LINE)
17	39052		1	SEAL, ADAPTOR TO BOTTOM COWL
18	10-24233		2	SCREW, ADAPTOR TO COWL (1 3/8") SERIAL #2798057-00029388
	10-22958		2	SCREW, ADAPTOR TO COWL (1 1/8") SERIAL #3002814-09999999
19	24-28357		2	SPRING, ADAPTOR SCREW
20	11-20110		2	NUT, ADAPTOR SCREW SERIAL #2798057-02938830
21	10-29200		2	SCREW, FUEL PUMP TO ANCHOR (5/8")

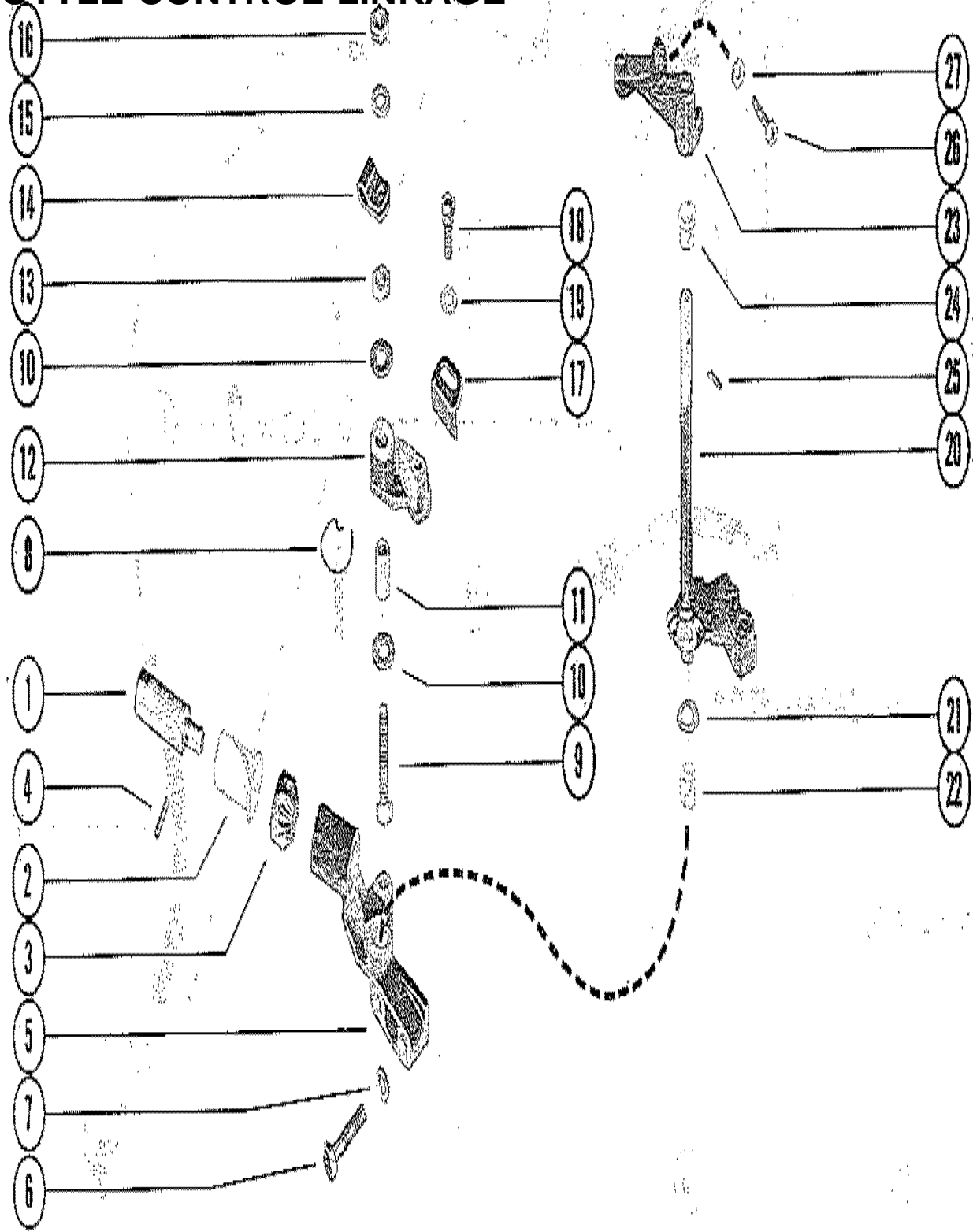
SHIFT CONTROL LINKAGE



SHIFT CONTROL LINKAGE

REF. NO.	PART NO.	SYM.	QTY.	DESCRIPTION
1	39323		1	HANDLE, SHIFT CONTROL SERIAL #2798057-02938830
	59107		1	HANDLE, SHIFT CONTROL SERIAL #3002714-09999999
2	12-29245		1	WASHER, SHIFT CONTROL SHAFT
3	11-39305		1	NUT, SHIFT HANDLE TO SHIFT CONTROL SHAFT
4	23-30678		2	BUSHING, NYLON - SHIFT CONTROL SHAFT
5	12-37828		1	WASHER, SHIFT CONTROL SHAFT
6	13-36206		1	WASHER, WAVE - SHIFT CONTROL SHAFT
7	47212		1	LEVER, SHIFT CONTROL (REMOTE)
8	17-39049		1	PIN, SHIFT ELVER TO SHIFT CONTROL SHAFT
9	39047		1	SHAFT, SHIFT CONTROL
10	43-30802		1	GEAR, SECTOR - SHIFT CONTROL SHAFT (HORIZONTAL)
11	12-29245		1	WASHER, SHIFT CONTROL SHAFT
12	11-20361		1	NUT, SCTOR GEAR TO SHIFT CONTROL SHAFT
13	24-39627		1	SPRING, DETENT - SHIFT CONTROL LEVER
14	39601		1	PLATE, DETENT SPRING
15	10-25764		2	SCREW, PLATE AND SPRING TO ADAPTOR PLATE
16	23-30677		1	BUSHING, NYLON - UPPER SHIFT SHAFT
17	54640A1		1	SHIFT SHAFT ASSEMBLY - LOWER (SHORT SHAFT) SEE NOTE BELOW
	54641A1		1	SHIFT SHAFT ASSEMBLY - LOWER (LONG SHAFT) SEE NOTE BELOW
18	43-55447		1	GEAR SECTOR - SHIFT SHAFT SEE NOTE BELOW

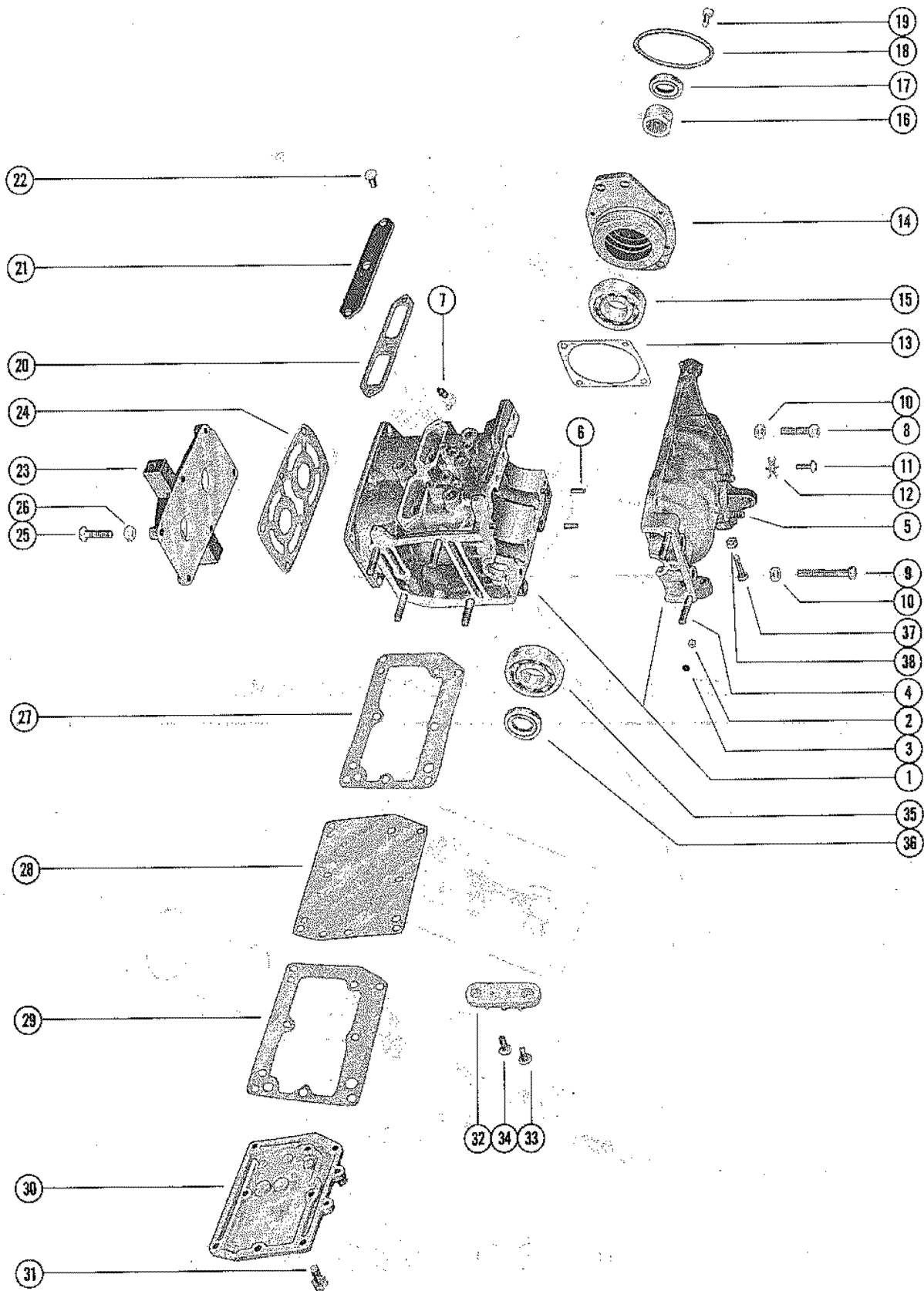
THROTTLE CONTROL LINKAGE



THROTTLE CONTROL LINKAGE

REF. NO.	PART NO.	SYM.	QTY.	DESCRIPTION
1	39038		1	SOCKET, THROTTLE CONTROL
2	23-31011		1	BUSHING, NYLONG - THROTTLE CONTROL SOCKET
3	43-39030		1	GEAR, HORIZONTAL - THROTTLE CONTROL SOCKET
4	17-24800		1	PIN, ROLL - GEAR TO THROTTLE CONTROL SOCKET
5	39029		1	HOUSING, THROTTLE CONTROL
6	10-22421		2	SCREW, THROTTLE CONTROL HOUSING TO CRANKCASE (1 1/4")
7	13-26992		2	LOCKERWASHER, THROTTLE CONTROL HOUSING SCREW
8	24-39042		1	SPRING, NEUTRAL SPEED LIMITER FOLLOWER
9	10-21807		1	SCREW, LIMITER TO CONTROL HOUSING
10	12-30971		2	WASHER, SPEED LIMITER FOLLOWER STUD
11	23-30972		1	BUSHING, SPEED LIMITER FOLLOWER STUD
12	32447		1	FOLLOWER, NUTRAL SPEED LIMITER
13	11-20088		1	NUT, JAM - SPEED LIMITER FOLLOWER STUD
14	54-39788		1	CLAMP, STOP SWITCH LEAD - SPEED LIMITER FOLLOWER STUD
15	12-29245		1	WASHER, SPEED LIMITER FOLLOWER STUD
16	11-28941		1	NUT, SPEED LIMITER FOLLOWER STUD
17	36107		1	STOP NUTRAL SPEED LIMITER
18	10-28710		1	SCREW, NEUTRAL SPEED LIMITER STOP TO FOLLOWER (5/8")
19	12-24676		1	WASHER, NEUTRAL SPEED LIMITER STOP SCREW
20	43-39031		1	GEAR AND SHAFT, THROTTLE CONTROL
21	13-39041		1	WASHER, WAVE - GEAR AND SHAFT (LOWER)
22	23-30868		1	BUSHING, NYLON - GEAR AND SHAFT TO THROTTLE CONTROL HOUSING
23	39033A1		1	LEVER ASSEMBLY, THROTTLE CONTROL
24	23-26841		1	BUSHING, NYLON - GEAR AND SHAFT (UPPER)
25	17-22896		1	PIN, ROLL - THROTTLE CONTROL ELVER TO GEAR AND SHAFT
26	10-23015		1	SCREW, ADJUSTING - THROTTLE ADVANCE
27	11-20645		1	NUT, LOCK - THROTTLE ADVANCE ADJUSTING SCREW

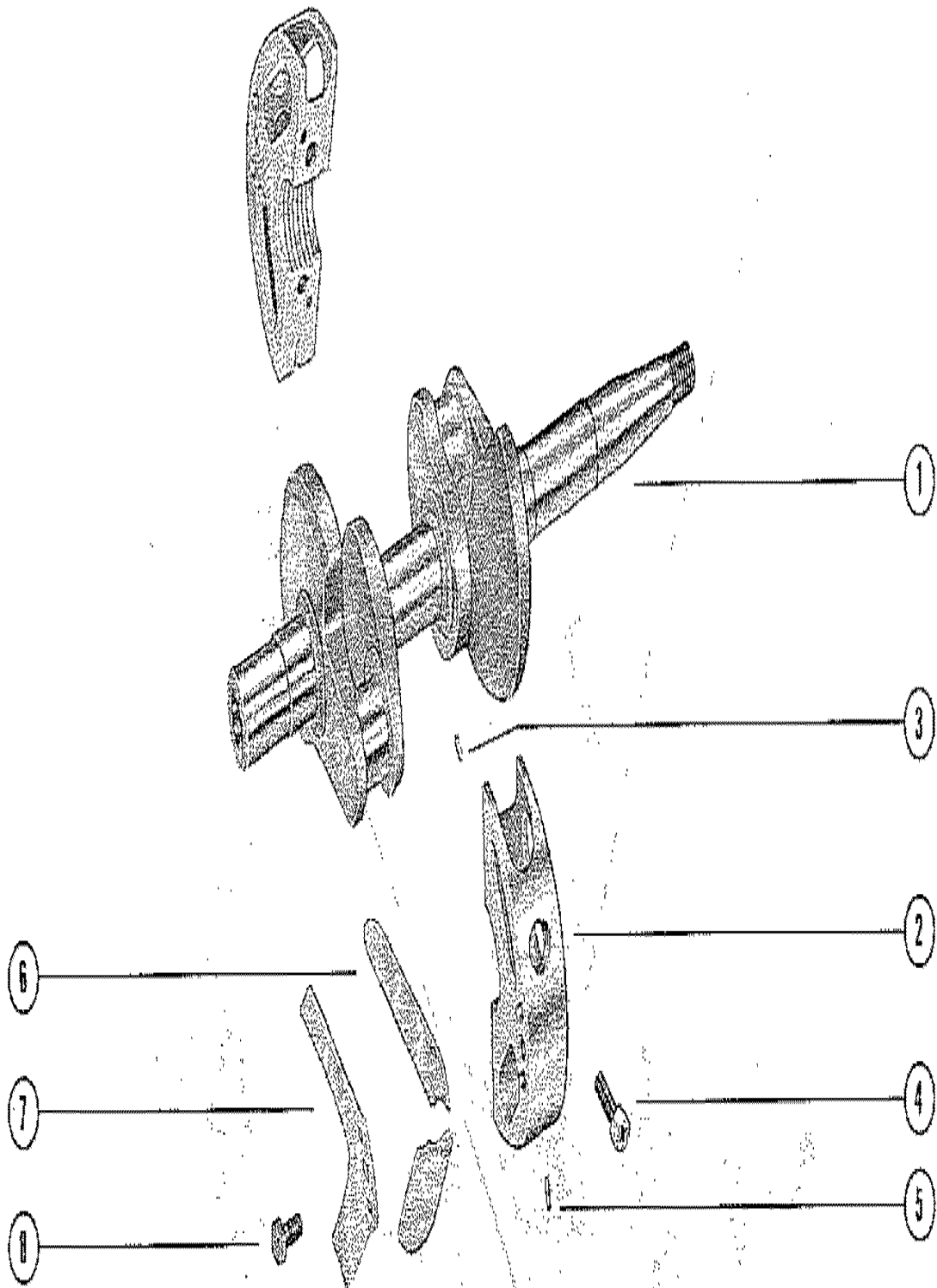
CYLINDER BLOCK AND CRANKCASE ASSEMBLY



CYLINDER BLOCK AND CRANKCASE ASSEMBLY

REF. NO.	PART NO.	SYM.	QTY.	DESCRIPTION
1	837-2756A2		1	CYLINDER BLOCK AND CRANKCASE ASSEMBLY
2	21-28481A1		1	CHECK VALVE ASSEMBLY, CRANKCASE
3	19-56688		1	WELCH PLUG, CYLINDER BLOCK
4	16-33526		6	STUD, BLOCKE AND CRANKCASE TO DRIVE SHAFT HOUSING
5	16-21723		2	STUD, CARBURETOR MOUNTING
6	17-21438		2	PIN, DOWEL - CRANKCASE TO CYLINDER BLOCK
7	22-25885		1	ELBOW, TELL TALE - CYLINDER BLOCK
8	10-31294		8	SCREW, CRANKCASE TO CYLINDER BLOCK (1")
9	10-24624		2	SCREW, CRANKCASE TO CYLINDER BLOCK (1 3/4")
10	11-46887		10	NUT, CRANKCASE FASTENING SCREW
11	10-26801		1	SCREW, MAIN BEARING LOCKING
12	14-20091		1	TAB WASHER, MAIN BEARING LOCKING SCREW
13	15-31412A1		AR	SHIM, UPPER HOUSING TO CYLINDER BLOCK (.002-3-5-10)
14	1141-3971A1		1	BEARING HOUSING ASSEMBLY, UPPER (NOT AS SHOWN)
15	30-20861		1	BEARING, BALL - UPPER BEARING HOUSING
16	31-31410		1	BEARING, FOLLER - UPPER BEARING HOUSING
17	26-56741		1	OIL SEAL, UPPER BEARING HOUSING
18	25-20863		1	"O" RING, UPPER BEARING HOUSING
19	10-28707		4	SCREW, UPPER BEARING HOUSING(1/2")
20	27-31434		1	GASKET, TRANSFER PORT COVER
21	31430		1	COVER, TRANSFER PORT
22	10-20665		3	SCREW, PORT COVER TO CYLINDER BLOCK (1/2")
23	1019-3944		1	COVER, CYLINDER BLOCK
24	27-31436		1	GASKET, CYLINDER BLOCK
25	10-21091		6	SCREW, CYLINDER BLOCK COVER TO CYLINDER BLOCK (1 1/8")
26	11-46887		6	NUT, CYLINDER BLOCK COVER MOUNTING SCREW
27	27-46233		1	GASKET, CYLINDER BLOCK TO BAFFLE PLATE
28	46235		1	{LATE, BAFFLE - EXHAUST MANIFOLD
29	27-46233		1	GASKET, BAFFLE PLATE TO EXHAUST MANIFOLD COVER
30	46172		1	COVER, EXHAUST MANIFOLD
31	10-28668		8	SCREW, BAFFLE PLATE AND MANIFOLD COVER MOUNTING(7/8")
32	30212		1	TERMINAL BLOCK, EXHAUST MANIFOLD COVER SERIAL SERIAL #2798057-02938830
33	10-35519		2	SCREW. TERMINAL BLOCK TO EXHAUST MANIFOLD COVER SERIAL #2798057-02938830
34	10-30663		1	SCREW, MAGNETO GROUND LEADS TO TERMIANL BLOCK SERIAL #2798057-02938830
35	30-20861		1	BEARING, BALL - CRANKCASE (LOWER)
36	26-56397		1	OIL SEAL, CRANKCASE (LOWER)
37	10-23015		1	SCREW, ADJUSTING - THROTTLE CONTROL
38	11-20645		1	NUT, THROTTLE CONTROL ADJUSTING SCREW

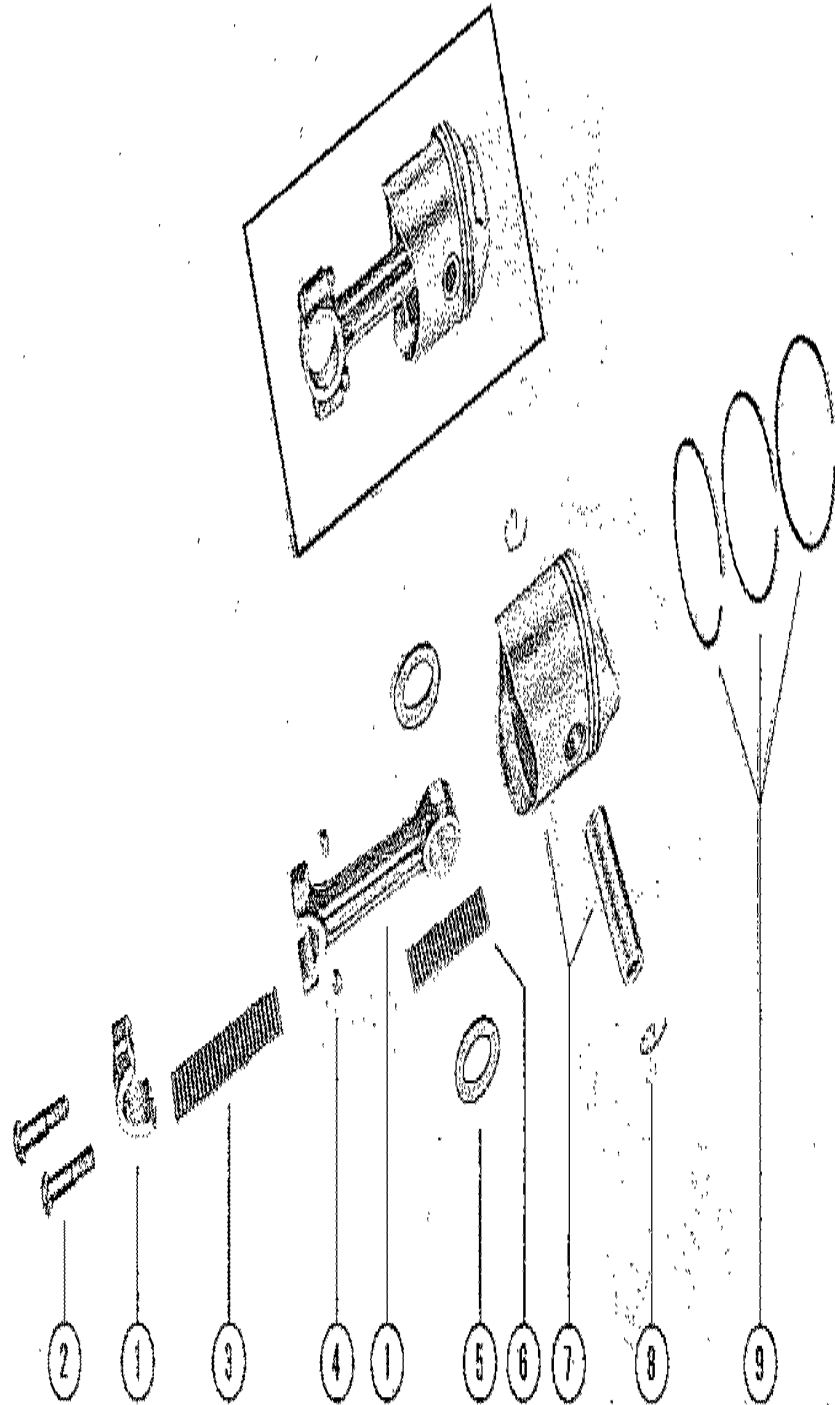
CRANKSHAFT AND MAIN BEARING ASSEMBLY



CRANKSHAFT AND MAIN BEARING ASSEMBLY

REF. NO.	PART NO.	SYM.	QTY.	DESCRIPTION
1	421-2224		1	CRANKSHAFT
2	532-1938A6		1	MAIN BEARING ASSEMBLY (VALVE TYPE)
3	17-20032		2	PIN, DOWEL - MAIN BEARING
	17-55453		8	PIN, DOWEL - MAIN BEARING
4	10-56781		2	SCREW, MAIN BEARING CLAMPING
5	17-20032		1	PIN, DOWEL - MAIN BEARING TO BLOCK
6	34-31942A1		1	REED SET, MATCHED - MAIN BEARING
7	34-20053		4	REED STOP, MAIN BEARING REED VALVES
8	10-27304		4	SCREW, REED STOP MOUNTING

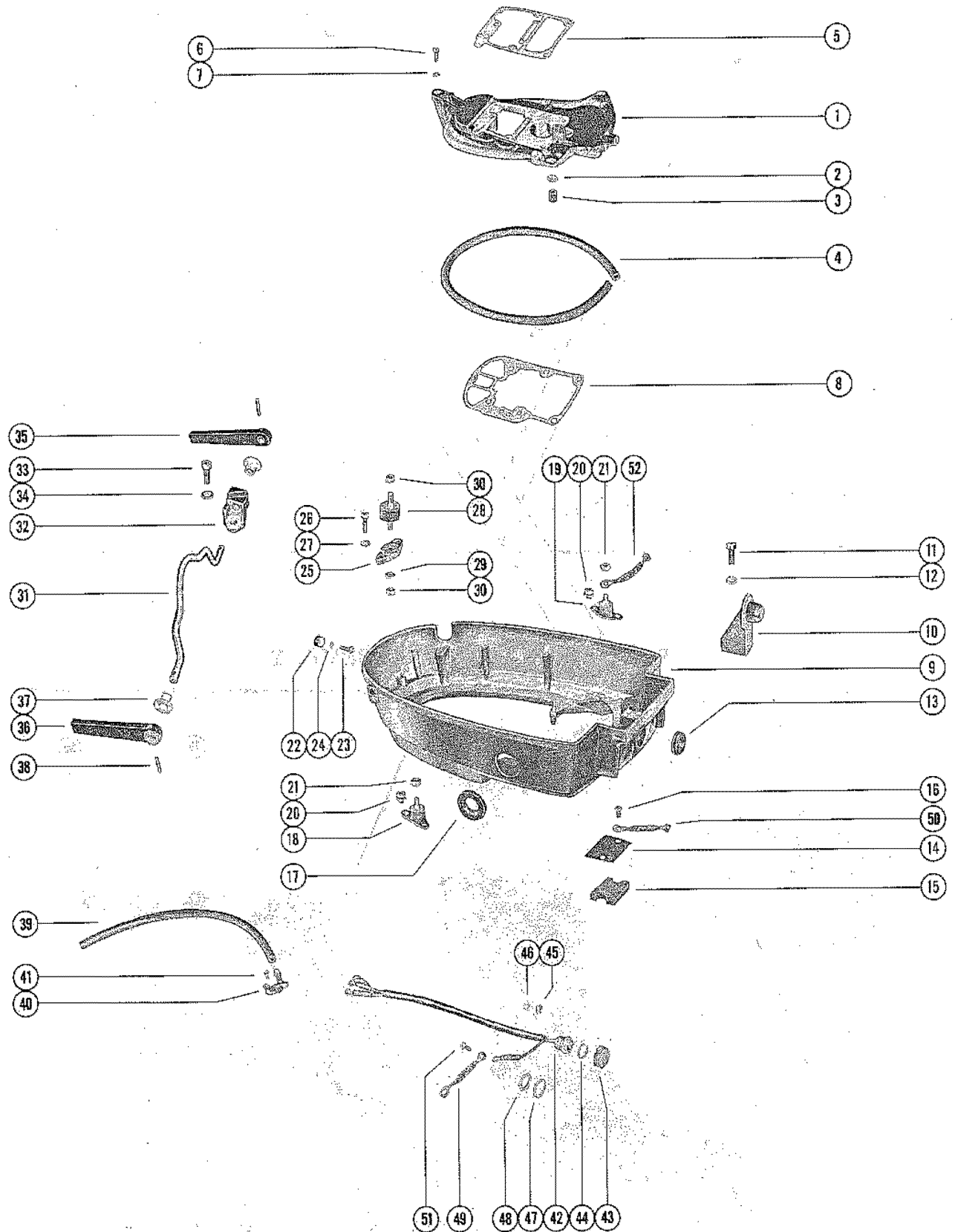
PISTON AND CONNECTING ROD ASSEMBLY



PISTON AND CONNECTING ROD ASSEMBLY

REF. NO.	PART NO.	SYM.	QTY.	DESCRIPTION
1	608-2646A2		2	CONNECTING ROD ASSEMBLY
2	10-39154		4	SCREW, CONNECTING ROD
3	29-26815		58	BEARING, NEEDLE - CRANKPIN
4	11-20061		4	NUT, CONNECTING ROD SCREW
5	12-31433		4	WASHER, NEEDLE BEARING RETAINING
6	29-31505		40	BEARING, NEEDLE - PISTON PIN
7	719-3374A2		1	PISTON/PIN ASSEMBLY
8	40-21666		4	LOCK RING, PISTON PIN
9	39-21665A12		1	RING, PISTON

BOTTOM COWL AND ADAPTOR PLATE

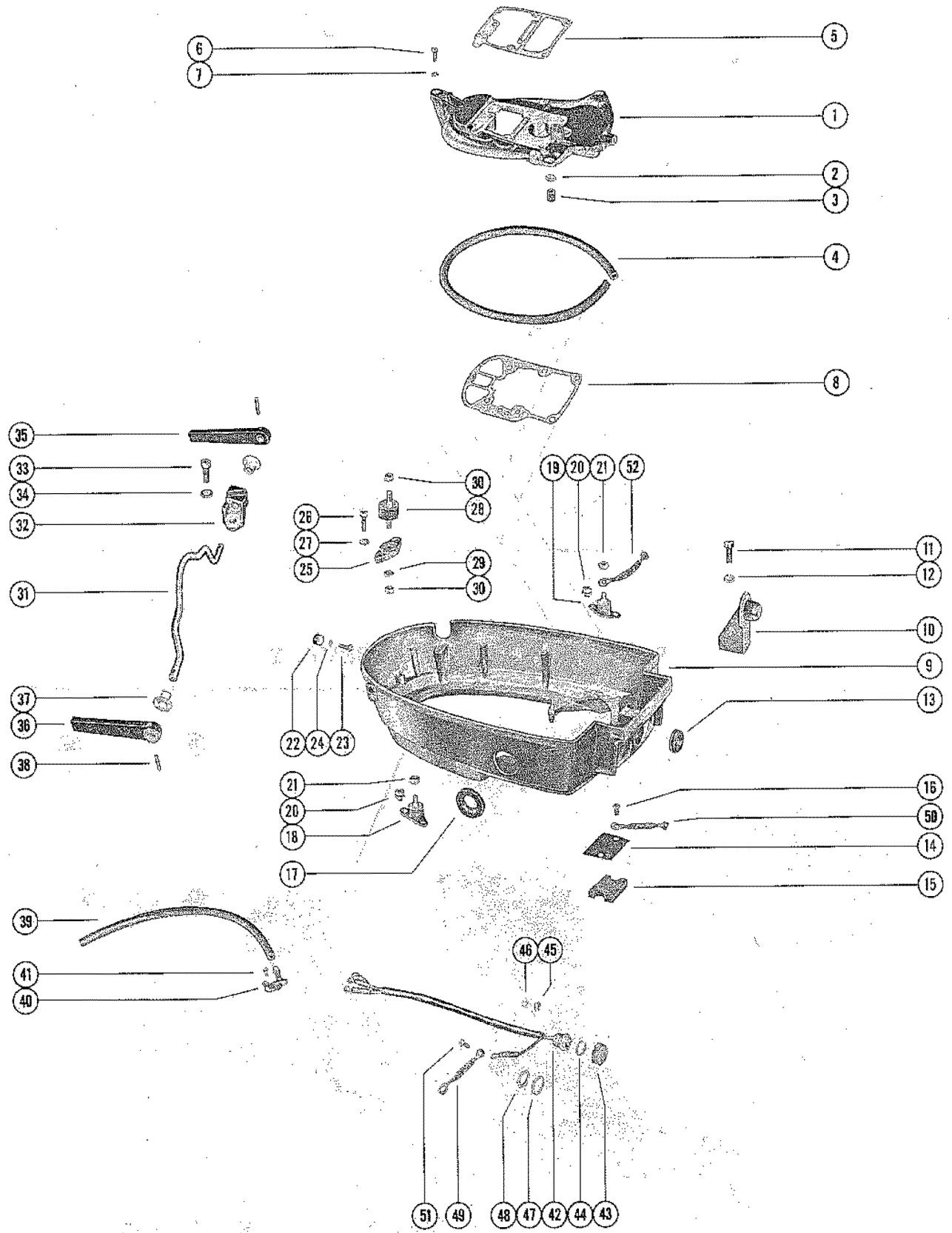


BOTTOM COWL AND ADAPTOR PLATE

REF. NO.	PART NO.	SYM.	QTY.	DESCRIPTION
1	56711A2		1	ADAPTOR PLATE ASSEMBLY
2	12-36554		1	WASHER, NYLON - WATER OUTLET TUBE (ADAPTOR PLATE)
3	26-36556		1	SEAL, RUBBER - WATER OUTLET TUBE (ADAPTOR PLATE) 4
4	39044		1	SEAL, RUBBER - ADAPTOR PLATE
5	27-45748		1	GASKET, POWERHEAD TO PLATE 4
6	10-22486		1	SCREW, ADAPTOR PLATE TO DRIVER SHAFT HOUSING (7/8")
7	113-26992		1	LOCKWASHER, ADAPTOR PLATE SCREW
8	27-39050		1	GASKET, ADAPTOR PLATE TO DRIVE SHAFT HOUSING 4
9	2124-3995		1	COWL, BOTTOM SERIAL #2798057-02938830
	2124-4416A2		1	COWL ASSEMBLY, BOTTOM SERIAL #3002814-09999999
10	56069		1	ANCHOR, LATCH - BOTTOM COWL
11	10-22483		2	SCREW, LATCH ANCHOR TO BOTTOM COWL (1 1/8")
12	13-26992		2	LOCKWASHER, LATCH ANCHOR SCREW
13	25-39054		1	GROMMET, CHOKE SHAFT - BOTTOM COWL
14	39051A1		1	PLATE ASSEMBLY, COVER - BOTTOM COWL SERIAL #2798057-02038830
15	39068		1	PAD, SOUND - COVER PLATE SERIAL #2798057-02038830
16	10-30009		2	SCREW, COVER PLATE TO BOTTOM COWL (3/8") SERIAL #2798057-02038830
14	59100		1	COVER, AIR INTAKE - BOTTOM COWL SERIAL #3002714-09999999
16	10-30009		2	SCREW, AIR INTAKE COVER TO BOTTOM COW (3/8")
17	39058		1	SEAL, SHIFT HANDLE - BOTTOM COWL
18	39145		1	MOUNT RUBBER - RUBBER - BOTTOM COWL TO ADAPTOR PLATE (STARBO)
19	39144		1	MOUNT, RUBBER - BOTTOM COWL TO ADAPTOR PLATE (PORT)
20	10-31208		4	SCREW, RUBBER MOUNT TO BOTTOM COWL(3/8") SERIAL #2798057-02038830
	10-59795		4	SCREW, RUBBER MOUNT TO BOTTOM COWL (1/2") SERIAL #3002814-09999999
21	11-46887		2	NUT, ADAPTOR PLATE TO RUBBER MOUNT
22	39565		1	SPOOL, NYLON - TOP COWL ALTCHING (BOTTOM COWL)
23	10-32228		1	SCREW, NYLON SPOOL TO BOTTOM COWL (5/8")
24	13-26996		1	LOCKWASHER, NYLON SPOOL SCREW
25	39147		1	ADAPTOR, REAR MOUNT TO BOTTOM COWL
26	10-22486		2	SCREW, REAR MOUNT ADAPTOR TO BOTTOM COWL (7/8")
27	13-26992		2	LOCKWASHER, REAR MOUNT ADAPTOR SCREW
28	39146		1	MOUNT, RUBBER - BOTTOM COWL TO ADAPTOR PLATE (REAR)
29	13-26992		1	LOCKWASHER, REAR MOUNT
30	11-46887		2	NUT, ADAPTOR PLATE TO REAR RUBBER MOUNT
31	39087		1	ROD, COWL LATCH - BOTTOM COWL
32	39099		1	BRACKET, COWL LATCH ROD

CONTINUED ON NEXT PAGE ➡

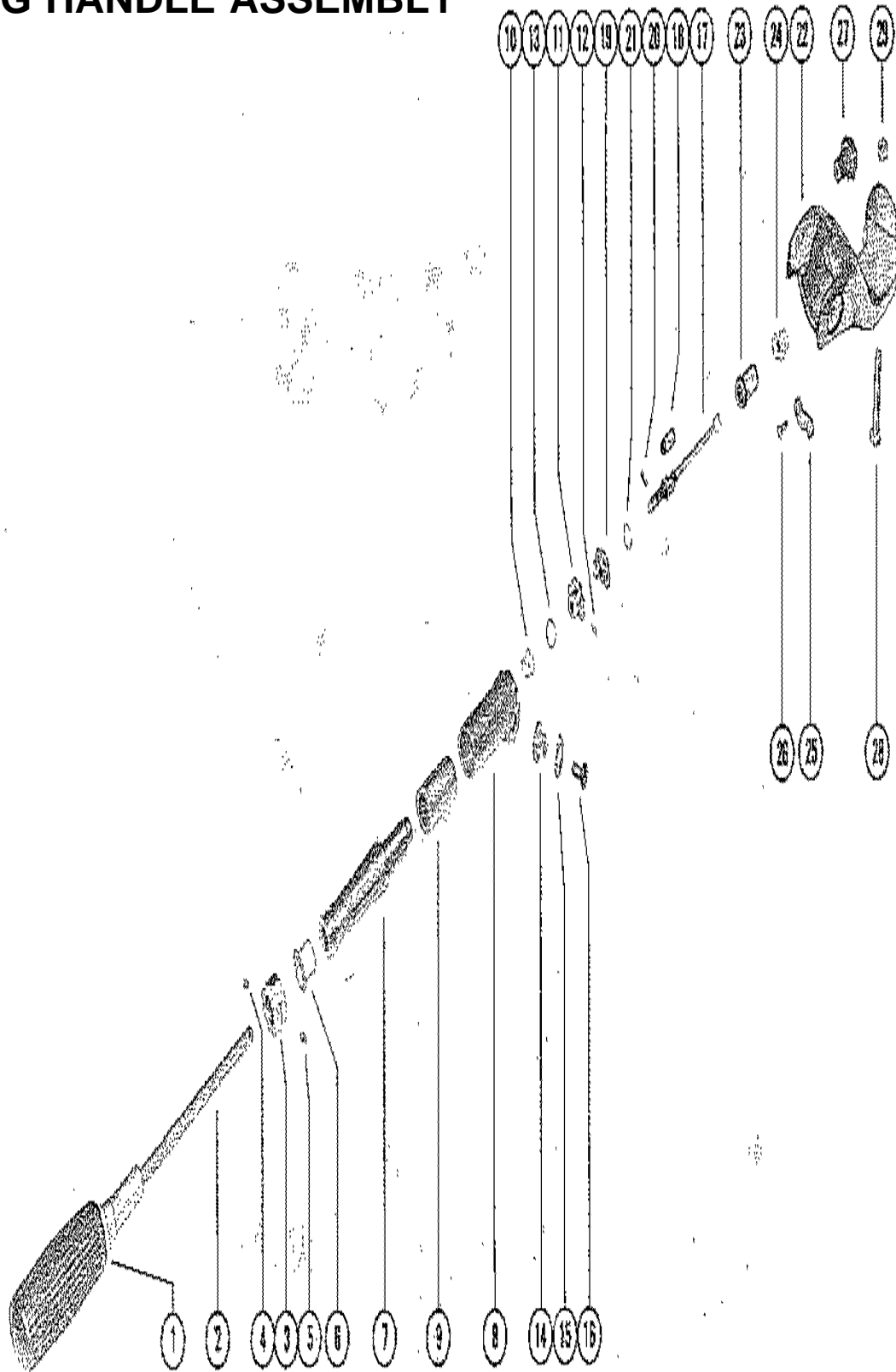
BOTTOM COWL AND ADAPTOR PLATE



BOTTOM COWL AND ADAPTOR PLATE

REF. NO.	PART NO.	SYM.	QTY.	DESCRIPTION
33	10-22486		1	SCREW, COWL LATCH BRACKET TO BOTTOM COWL (7/8")
34	13-26992		1	LOCKWASHER, COWL LATCH BRACKET SCREW
35	39083		1	HANDLE, COWL LATCH ROD (PORT)
36	39098		1	HANDLE, COWL LATCH ROD (STARBOARD)
37	23-22981		2	BUSHING, NYLONG- COWL LATCH ROD TO BOTTOM COWL 2
38	17-25319		2	PIN, ROLL - HANDLE TO COWL LATCH ROD
39	32-34395A1		1	TUBE, TELL TALE (11")
40	56712		1	NOZZLE, TELL TALE
41	10-34222		1	SCREW, TELL TALE NOZZLE TO BOTTOM COWL
42	57186A2		1	STOP SWITCH ASSEMBLY SERIAL #2798057-02938830
	59065A1		1	STOP SWITCH ASSEMBLY (NOT AS SHOWN) SERIAL #3002814-09999999
43	38950A1		1	COVER ASSEMBLY, STOP SWITCH SERIAL #3002814-09999999
44	12-59061		1	WASHER, STATOR LEAD TO STOP SWITCH SERIAL #3002814-09999999
45	13-26996		1	LOCKWASHER, STATOR LEAD TO STOP SWITCH SERIAL #3002814-09999999
46	11-20645		1	NUT, STATOR LEAD TO SOTP SWITCH SERIAL #3002814-09999999
47	13-21972		1	LOCKWASHER, STOP SWITCH CONNECTOR
48	11-21971		1	NUT, STOP SWITCH TO BOTTOM COWL
49	57845A1		1	GROUND WIRE, BOTTOM COWL (4 1/2") SERIAL #2798057-02938830
50	46933A1		1	GROUND WIRE, COVER PLATE SCREW (3 5/8") SERIAL #2798057-02938830
51	10-30009		1	SCREW, STOP SWITCH LEAD TO BOTTOM COWL (3/8") SERIAL #2798057-02938830
52	59796A1		2	GROUND WIRE, RUBBER MOUNT SCREW AND NUT (3") SERIAL #3002814-09999999

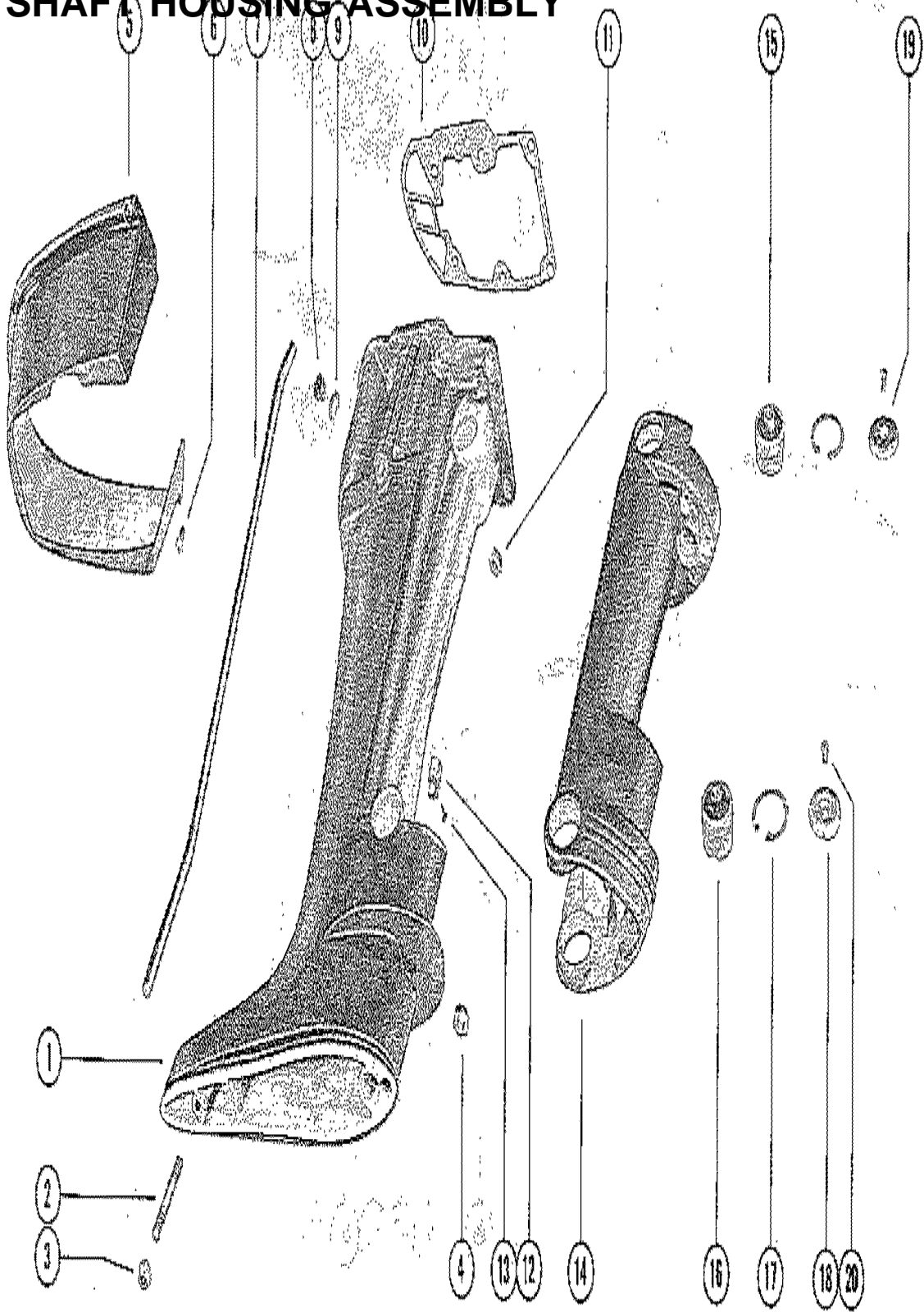
STEERING HANDLE ASSEMBLY



STEERING HANDLE ASSEMBLY

REF. NO.	PART NO.	SYM.	QTY.	DESCRIPTION
-	49556A4		1	STEERING HANDLE ASSEMBLY, COMPLETE
1	27763		1	GRIP, RUBBER - STEERING HANDLE BODY
2	35909		1	BODY ADN SHAFT, STEERING HANDLE BODY
3	31001		1	INDICATOR, SPEED AND LIMIT - STEERING HANDLE
4	10-31002		1	SCREW, SET - SPEED AND SHIFT INDICATOR
5	10-22290		1	SCREW, DRIVE - INDICATOR TO STEERING HANDLE BODY
6	23-30677		1	BUSHING, NYLON - STEERING HANDLE TO BODY
7	49556		1	HANDLE, STEERING
8	49558		1	KNCUKLE, STEERING HANDLE
9	23-49555		1	BUSHING, RUBBER - STEERING HANDLE
10	23-28100		1	BUSHING, NYLON - STEERING HANDLE
11	43-53205		1	GEAR, BALL - STEERING HANDLE SHAFT
12	17-26862		1	PIN, BALL GEAR TO STEERING HANDLE SHAFT
13	53-53204		1	RING, RETAINING - BALL GEAR
14	48003		2	PIVOT, STEERING HANDLE TO BRACKET
15	15-48002015		2	SHIM, STEERING HANDLE PIVOT TO BRACKER (.015
16	10-56214		2	SCREW, STEERING HANDLE TO ARM BRACKER (5/8")
17	47742A1		1	UNIVERSAL JOINT ASSEMBLY
18	23-48005		1	SLEEVE, UNIVERSAL JOINT
19	43-53205		1	GEAR, BALL - UNIVERSAL JOINT
20	17-26862		1	PIN, BALL GEAR TO UNIVERSAL JOINT
21	53-53204		1	RING, RETAINING - BALL GEAR
22	47679		1	BRACKET, STEERING ARM
23	47743		1	BOOT, UNIVERSAL JOINT
24	23-47818		1	BUSHING, STEERING ARM BRACKET
25	24-47744		2	SPRING, DETENT - STEERING HANDLE
26	10-37655		2	SCREW, DETENT SPRING TO STEERING HANDLE
27	39070		1	BOOT, RUBBER - THROTTLE CONTROL SHAFT
28	10-30679		3	SCREW, STEERING ARM BRACKET TO SADDLE
29	11-46887		3	NUT, STEERING ARM BRACKET FASTENING SCREW

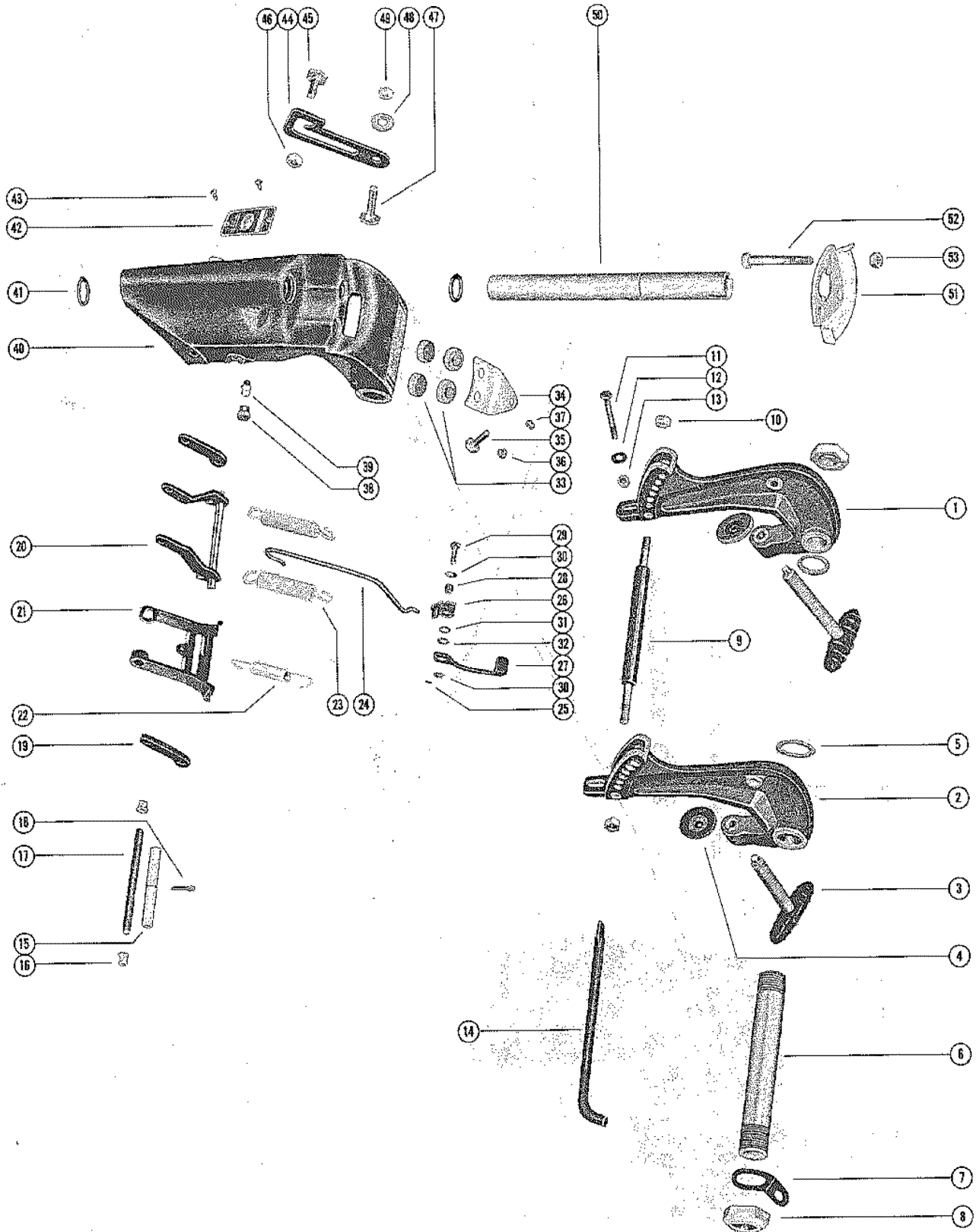
DRIVE SHAFT HOUSING ASSEMBLY



DRIVE SHAFT HOUSING ASSEMBLY

REF. NO.	PART NO.	SYM.	QTY.	DESCRIPTION
1	1556-4030A1		1	DRIVE SHAFT HOUSING ASSEMBLY (SHORT SHAFT)
	1558-4031A1		1	DRIVE SHAFT HOUSING ASSEMBLY (LONG SHAFT)
2	16-56299		1	STUD, DRIVE SHAFT HOUSING TO GEAR HOUSING
3	11-34863		1	NUT, DRIVE SHAFT HOUSING STUDE (3/8 - 24)
4	11-35814		1	NUT, GEAR HOUSING TO DRIVE SHAFT HOUSING STUD (5/16 - 24)
5	39025		1	COVER, TRIM - DRIVE SHAFT HOUSING
6	10-20512		3	SCREW, TRIM COVER TO BOTTOM COWL (7/16")
7	32-39061		1	TUBE, WATER OUTLET (SHORT SHAFT)
	32-39062		1	TUBE, WATER OUTLET (LONG SHAFT)
8	10-28634		1	SCREW, FLUSH - DRIVE SHAFT HOUSING
9	12-20260		1	WASHER, SEALING - FLUSH SCREW
10	27-39050		1	GASKET, ADAPTOR PLATE TO DRIVE SHAFT HOUSING
11	11-46887		4	NUT, POWERHEAD TO DRIVE SHAFT HOUSING STUDS
	11-24652		2	NUT, POWERHEAD TO DRIVE SHAFT HOUSING STUDS
12	47259A1		2	BLOCK ASSEMBLY, DRIVE SHAFT LONG SHAFT
13	10-47225		2	SCREW, BLOCK ASSEMBLY TO DRIVE SHAFT HOUSING LONG SHAFT
14	1559-2644		1	SADDLE
15	32021		1	BUMPER, LOWER THRUST - SADDLE
16	30646A2		4	MOUNT ASSEMBLY, UPPER AND LOWER FOR LONG-SHAFT ENGINES, REPLACE 2 UPPER MOUNT ASSEMBLIES (A-30646A2) WITH 2 A-30646A3 MOUNT ASSEMBLIES.
17	53-26406		4	RING, RETAINING - UPPER AND LOWER MOUNT
18	53041		2	COVER, LOWER MOUNT
19	45796		2	COVER, UPPER MOUNT
20	10-30675		2	SCREW, UPPER AND LOWER MOUNT COVER TO MOUNT (3/8")
	10-45817		2	SCREW, LOWER MOUNT COVER TO MOUNT (7/16")

CLAMP AND SWIVEL BRACKET ASSEMBLY

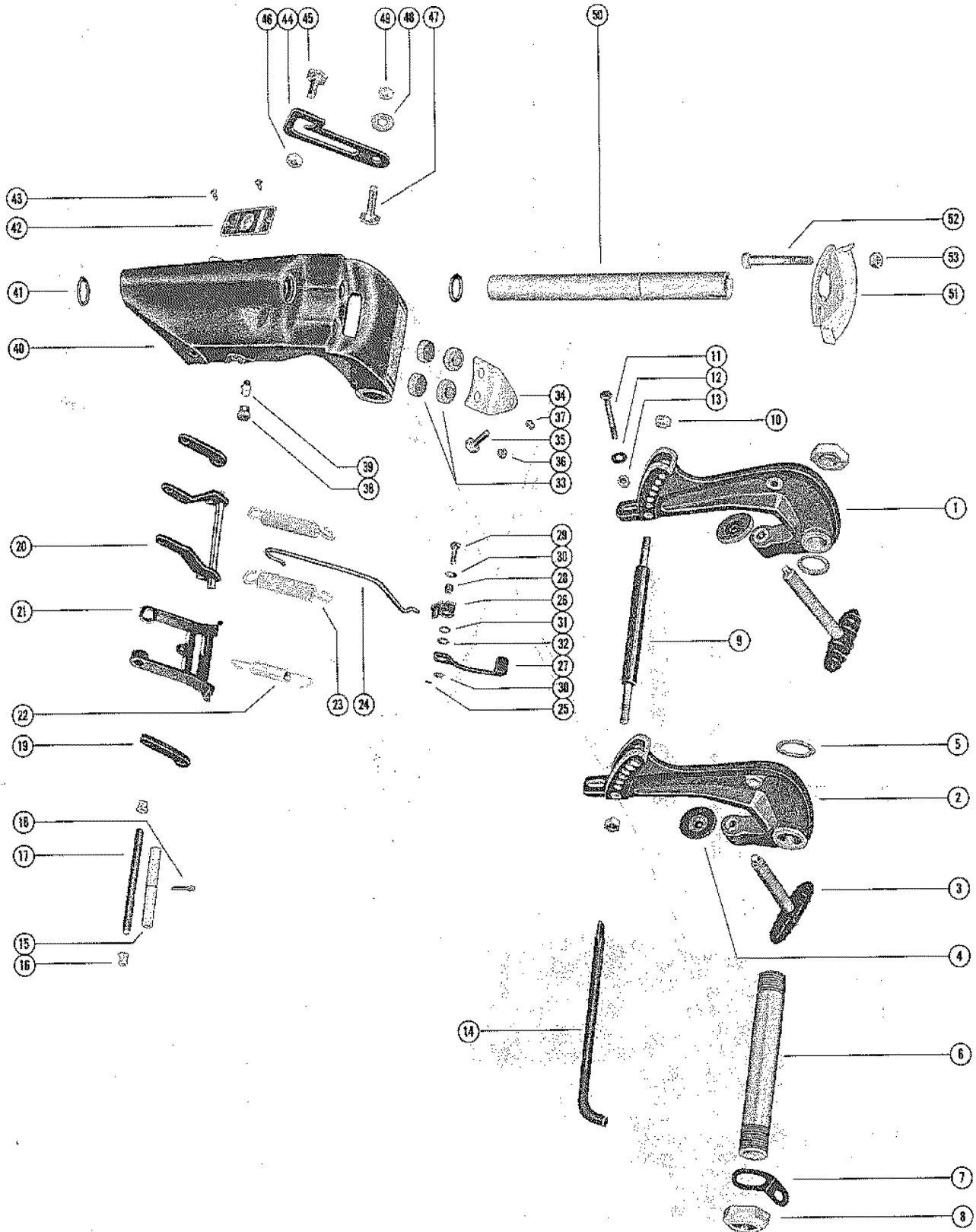


CLAMP AND SWIVEL BRACKET ASSEMBLY

REF. NO.	PART NO.	SYM.	QTY.	DESCRIPTION
1	1458-2328A1		1	CLAMP BRACKET ASSEMBLY (PORT) SERIAL #2798057-02938830
2	1459-2329A1		1	CLAMP BRACKET ASSEMBLY (STARBOARD) SERIAL #2798057-02938830
3	22373A1		2	THUMB SCREW ASSEMBLY SERIAL #2798057-02938830
4	112-20214		2	WASHER THUMB SCREW SERIAL #2798057-02938830
1	1458-2328A1		1	CLAMP BRACKET ASSEMBLY (PORT) SERIAL #3002814-09999999
2	1467-4426A1		1	CLAMP BRACKET ASSEMBLY (STARBOARD) SERIAL #3002814-09999999
3	59170A3		2	THUMB SCREW ASSEMBLY SERIAL #3002814-09999999
4	12-20214		2	WASHER, THUMB SCREW SERIAL #3002814-09999999
5	12-52864		2	WASHER, TILT TUBE - CLAMP TO SWIVEL BRACKET
6	45757		1	TILT TUBE, CLAMP BRACKET TO SWIVEL BRACKET
7	54-30954		1	CLAMP, SAFETY CHAIN - TILT TUBE
8	11-30499		2	NUT, TILT TUBE FASTENING
9	16-59622		1	STUD, CLAMP BRACKET SPACER
10	11-29598		2	NUT, CLAMP BRACKET STUD FASTENING
11	10-29326		2	SCREW, CLAMP BRACKET TO BOAT TRANSOM (2 3/4")
12	12-31782		2	WASHER, CLAMP BRACKET SCREW
13	11-56374		2	NUT, CLAMP BRACKET SCREW
14	17-55952A1		1	TILT LOCK PIN ASSEMBLY
15	23-30813		1	SPACER, TUBE - REVERSE LOCK LEVER ROD
16	23-26856		2	BUSHING, NYLON - REVERSE LOCK LEVER ROD
17	56663		1	ROD, REVERSE LOCK TO SWIVEL BRACKET
18	18-56206		1	COTTER PIN, REVERSE LOCK LEVER TO ROD
19	30815		2	LINK, REVERSE LOCK LEVER
20	53267A1		1	REVERSE LOCK LEVER ASSEMBLY
21	53435		1	BRACKET, STOP
22	24-53456		1	SPRING, EXTENSION - STOP BRACKET
23	24-31918		2	SPRING, TENSION - REVERSE LOCK LEVER
24	38318		1	ROD, LINK - REVERSE LOCK LEVER SERIAL #2798057-02938830
25	17-27006		1	PIN, ROLL - SWIVEL BRACKET CONTROL LEVER SERIAL #2798057-02938830
26	56636A1		1	LINK ASSEMBLY, REVERSE LOCK CONTROL LEVER SERIAL #2798057-02938830
27	56637		1	LEVER, CONTROL - REVERSE LOCK SERIAL #2798057-02938830
28	23-56639		1	SPACER, CONTROL LEVER SCREW SERIAL #2798057-02938830
24	59357		1	ROD, LINK - REVERSE LOCK LEVER SERIAL #3002814-09999999
25	17-27006		1	PIN, ROLL - SWIVEL BRACKET CONTROL LEVER SERIAL #3002814-09999999

CONTINUED ON NEXT PAGE ➡

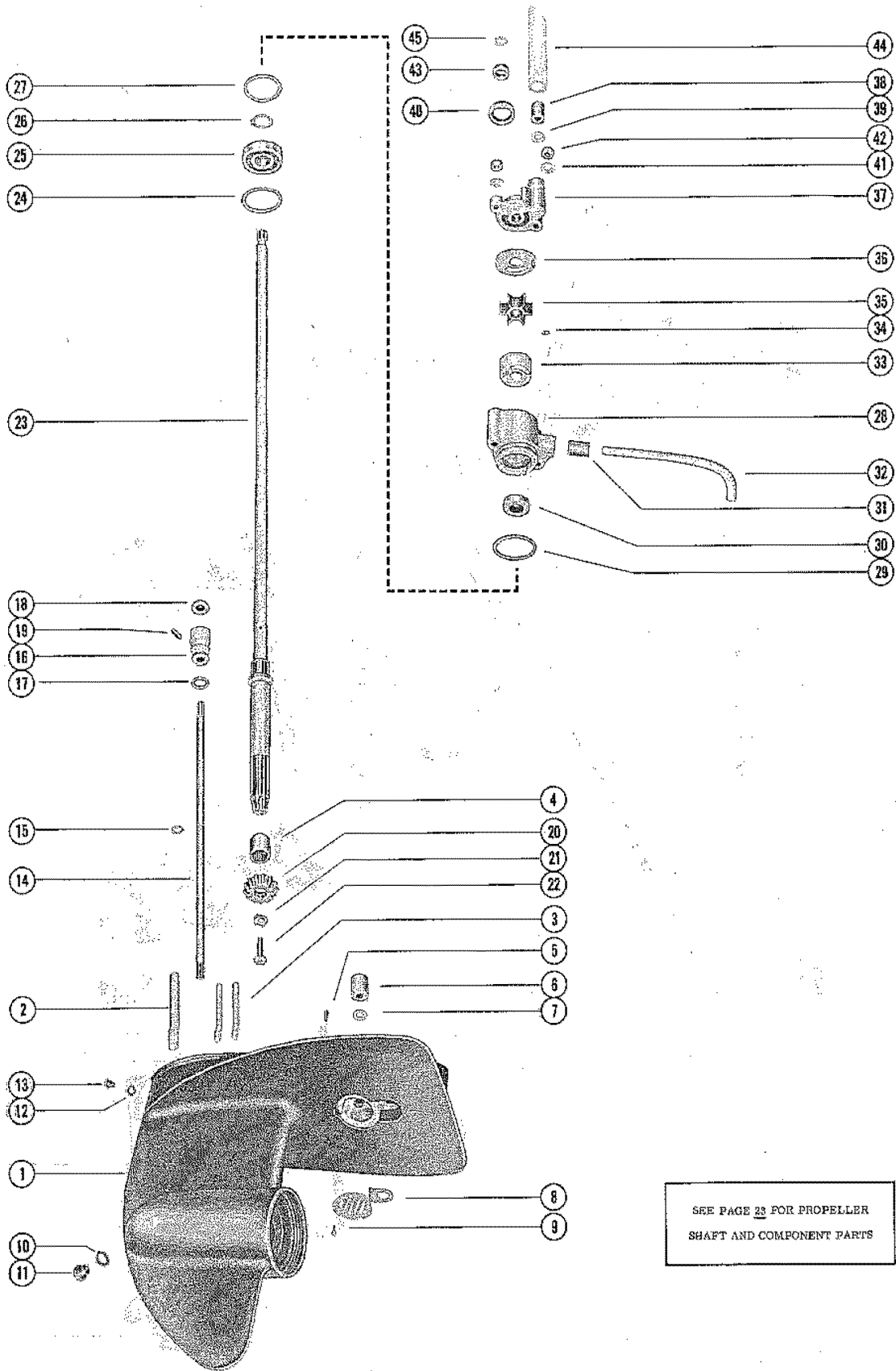
CLAMP AND SWIVEL BRACKET ASSEMBLY



CLAMP AND SWIVEL BRACKET ASSEMBLY

REF. NO.	PART NO.	SYM.	QTY.	DESCRIPTION
26	59361A1		1	LINK ASSEMBLY, REVERSE LOCK CONTROL LEVER SERIAL #3002814-09999999
27	59355		1	LEVER, CONTROL - REVERSE LOCK SERIAL #3002814-09999999
28	23-31309		1	SPACER, CONTROL ELVER SCREW
29	10-56682		1	SCREW, CONTROL ELVER TO LINK
30	12-56681		2	WASHER, CONTROL ELVER FASTENING SCREW
31	13-34632		1	WASHER, WAVE - CONTROL LEVER SCREW
32	112-24812		1	WASHER, CONTROL LEVER SCREW
33	20203		4	DISC, FRICTION - CLAMP PLATE AND SWIVEL BRACKET
34	30690		1	PLATE, CLAMP - CO-PILOT
35	10-56649		1	SCREW, CLAMP PLATE ADJUSTING
36	223-59573		1	SPACER, CLAMP PLATE ADJUSTING SCREW SERIAL #3002814-09999999
37	13-48239		1	WASHER, WAVE - CLAMP PLATE ADJUSTING SCREW
38	29359		1	LUBRICAP, GREASE FITTING
39	22-31345		1	FITTING, GREASE - SWIVEL BRACKET
40	1454-1788		1	SWIVEL BRACKET
41	25-25439		2	"O" RING, SWIVEL BRACKET
42	38-31042		1	SERIAL PLATE
43	10-28642		2	SCREW, DRIVE - SERIAL PLATE TO SWIVEL BRACKET
44	55851		1	LEVER, TILT STOP
45	10-29237		1	SCREW, RETAINING - TILT STOP LVER
46	11-46887		1	NUT, TILT STOP LEVER RETAINING SCREW
47	10-27791		1	SCREW, ANCHOR - TILT STOP LEVER
48	13-20846		1	WASHER, WAVE - LEVER ANCHOR SCREW
49	11-46887		1	NUT, TILT STOP LEVER ANCHOR SCREW
50	17-30688		1	SWIVEL PIN, SWIVEL BRACKET TO SADDLE
51	35860		1	CO-PILOT DISC
52	10-30679		3	SCREW, CO-PILOT DISC TO SADDLE
53	11-46887		3	NUT, CO-PILOT DISC FASTENING SCREW

GEAR HOUSING ASSEMBLY, COMPLETE (PAGE 1)

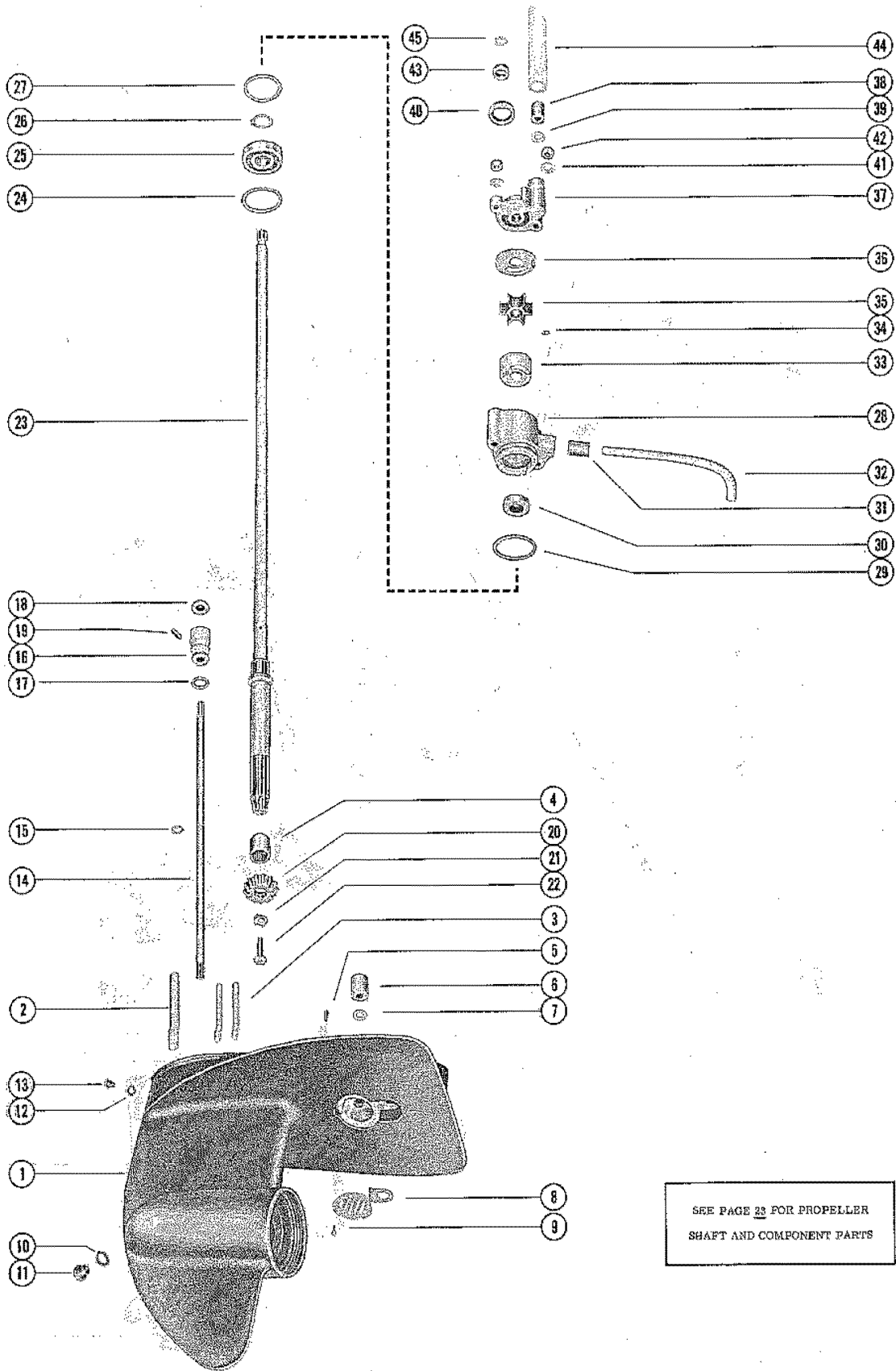


GEAR HOUSING ASSEMBLY, COMPLETE (PAGE 1)

REF. NO.	PART NO.	SYM.	QTY.	DESCRIPTION
-	1630-2643A32		1	GEAR HOUSING ASSEMBLY, COMPLETE (SHORT SHAFT) SERIAL 02798057-02938830
-	1630-2643A33		1	GEAR HOUSING ASSEMBLY, COMPLETE (LONG SHAFT) SERIAL 02798057-02938830
-	160-4407A4		1	GEAR HOUSING ASSEMBLY, COMPLETE (SHORT SHAFT) SERIAL 03002814-09999999
-	1630-4407A5		1	GEAR HOUSING ASSEMBLY, COMPLETE (LONG SHAFT) SERIAL 03002814-09999999
1	1630-2643A9		1	GEAR HOUSING ASSEMBLY (SERIAL THRU) SERIAL 02798057-02938830
	1630-4407A1		1	GEAR HOUSING ASSEMBLY (SERIAL AND UP) SERIAL 03002814-09999999
2	16-58138		1	STUD, GEAR HOUSING TO DRIVE SHAFT HOUSING (3 7/16")
3	16-58136		2	STUD, WATE RPUMP HOUSING TO GEAR HOUSING (2 3/4")
4	31-22756		1	BEARING, ROLLER - DRIVE SHAFT
5	17-20032		1	PIN, DOWEL - LOCATING
6	26-33613		1	SEAL, RUBBER - WATER INTAKE TUBE
7	12-36555		1	WASHER, NYLON - INTAKE TUBE SEAL
8	35-33425		1	SCREEN, WATER INTAKE
9	10-28642		1	SCREW, WATER INTAKE SCREEN TO GEAR HOUSING
10	12-20260		1	WASHER, GREASE FILLER HOLD SCREW
11	10-28634		1	SCREW, GREASE FILLER HOLE
12	12-20262		1	WASHER, GREASE VENT HOLE SCREW
13	10-28653		1	SCREW, GREASE VENT HOLE
14	54640A1		1	SHIFT SHAFT ASSEMBLY - LOWER (SHORT SHAFT)
	54641A1		1	SHIFT SHAFT ASSEMBLY - LOWER (LONG SHAFT)
15	53-22899		1	RING, RETAINING - SHIFT SHAFT
16	23-30676A1		1	BUSHING ASSEMBLY, SHFIT SHAFT
17	25-26802		1	"O" RING, SHIFT SHAFT BUSHING
18	26-30696		1	OIL SEAL, SHIFT SHAFT BUSHING
19	10-39149		1	SCREW, SHIFT SHAFT BUSHING RETAINER
20	43-48579		1	GEAR, PINION
21	14-30377		1	TAB WASHER, PINION GEAR TO DRIVE SHAFT SCREW
22	10-30376		1	SCREW, PINION GEAR TO DRIVE SHAFT
23	45-39078		1	DRIVE SHAFT (SHORT SHAFT)
	45-39077		1	DRIVE SHAFT (LONG SHAFT)
24	15-30527A1		AR	SHIM, DRIVE SHAFT BALL BEARING TO BEAR HOUSING (.002-3-5-10)
25	30-33076		1	BEARING, BALL - DRIVE SHAFT
26	53-30523		1	RING, RETAINING - BALL BEARING TO DRIVE SHAFT
27	15-30527A1		AR	SHIM DRIVE SHAFT BALL BEARING TO PUMP (.002-3-5-10)
28	46-46893A3		1	WATER PUMP HOUSING ASEMBLY
29	25-29439		1	"O" RING, WATER PUMP HOUSING

CONTINUED ON NEXT PAGE ➡

GEAR HOUSING ASSEMBLY, COMPLETE (PAGE 1)

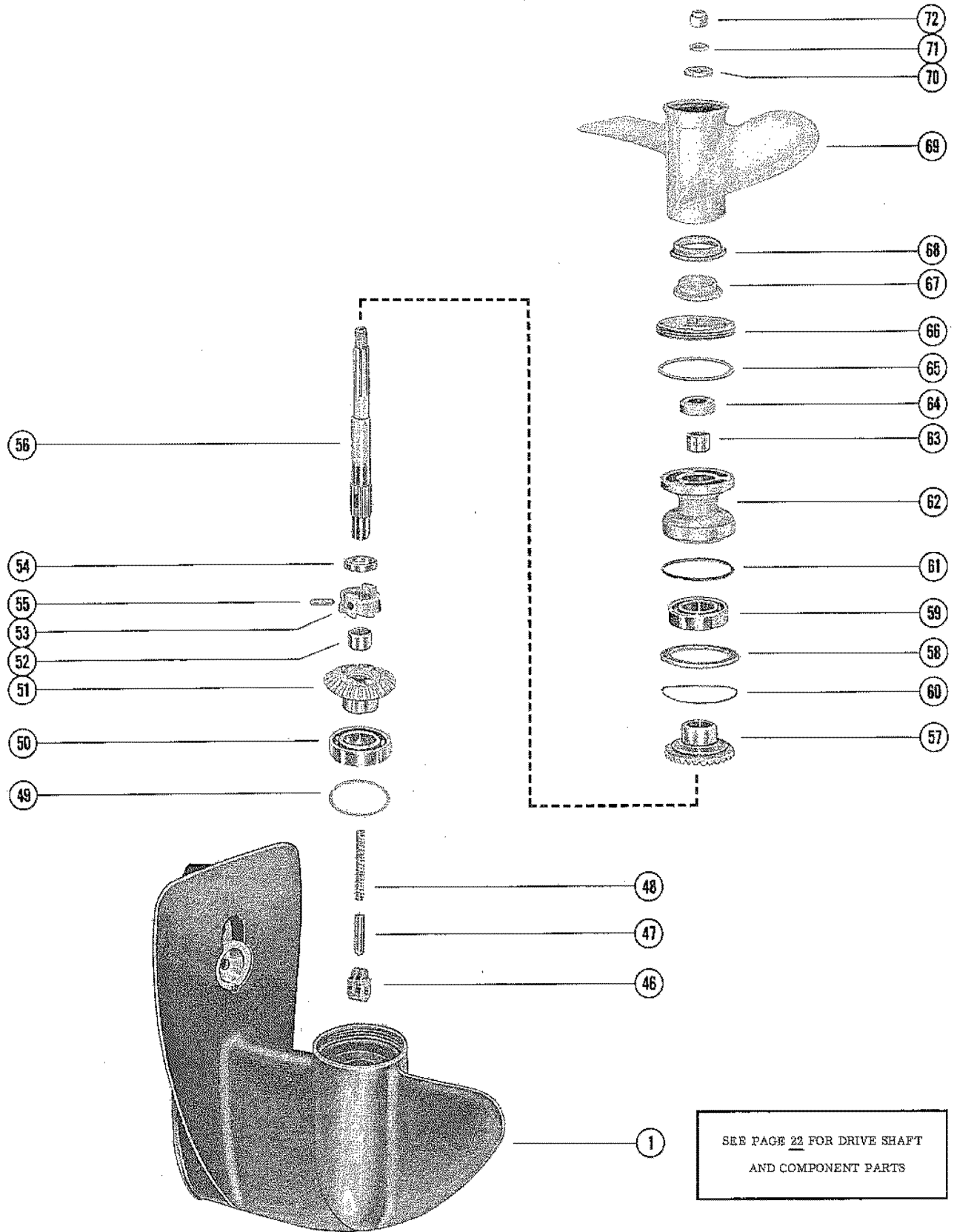


SEE PAGE 23 FOR PROPELLER
SHAFT AND COMPONENT PARTS

GEAR HOUSING ASSEMBLY, COMPLETE (PAGE 1)

REF. NO.	PART NO.	SYM.	QTY.	DESCRIPTION
30	26-30900		1	OIL SEAL, WATER PUMP HOUSING
31	26-33613		1	SEAL, WATE RINTAKE TUBE
32	32-34293		1	TUBE, WATER INTAKE
33	46894		1	INSERT, WATER PUMP HOUSING
34	28-56655		1	KEY, IMPELLER DRIVE
35	47-39074		1	IMPELLER, WATER PUMP
36	46895		1	PLATE, FACE - WATER PUMP HOUSING TO WATER PUMP COVER
37	46896A2		1	WATER PUMP COVER ASSEMBLY
38	26-36558		1	SEAL, WATER PUMP COVER
39	12-36554		1	WASHER, NYLON - WATER PUMP COVER
40	26-30913		1	OIL SEAL ,WATER PUMP COVER
41	12-20533		2	WASHER, WATER PUMP COVER
42	11-35045		2	NUT WATER PUMP HOUSING AND COVER STUDS
43	25-30526		1	RING, RUBBER - CENTRIFUGAL SLINGER (DRIVE SHAFT)
44	23-31792		1	SLEEVE, GUIDE - WATER INLET TUBE
45	25-21720		1	"O" RING, UPPER - DRIVE SHAFT

GEAR HOUSING ASSEMBLY, COMPLETE (PAGE 2)

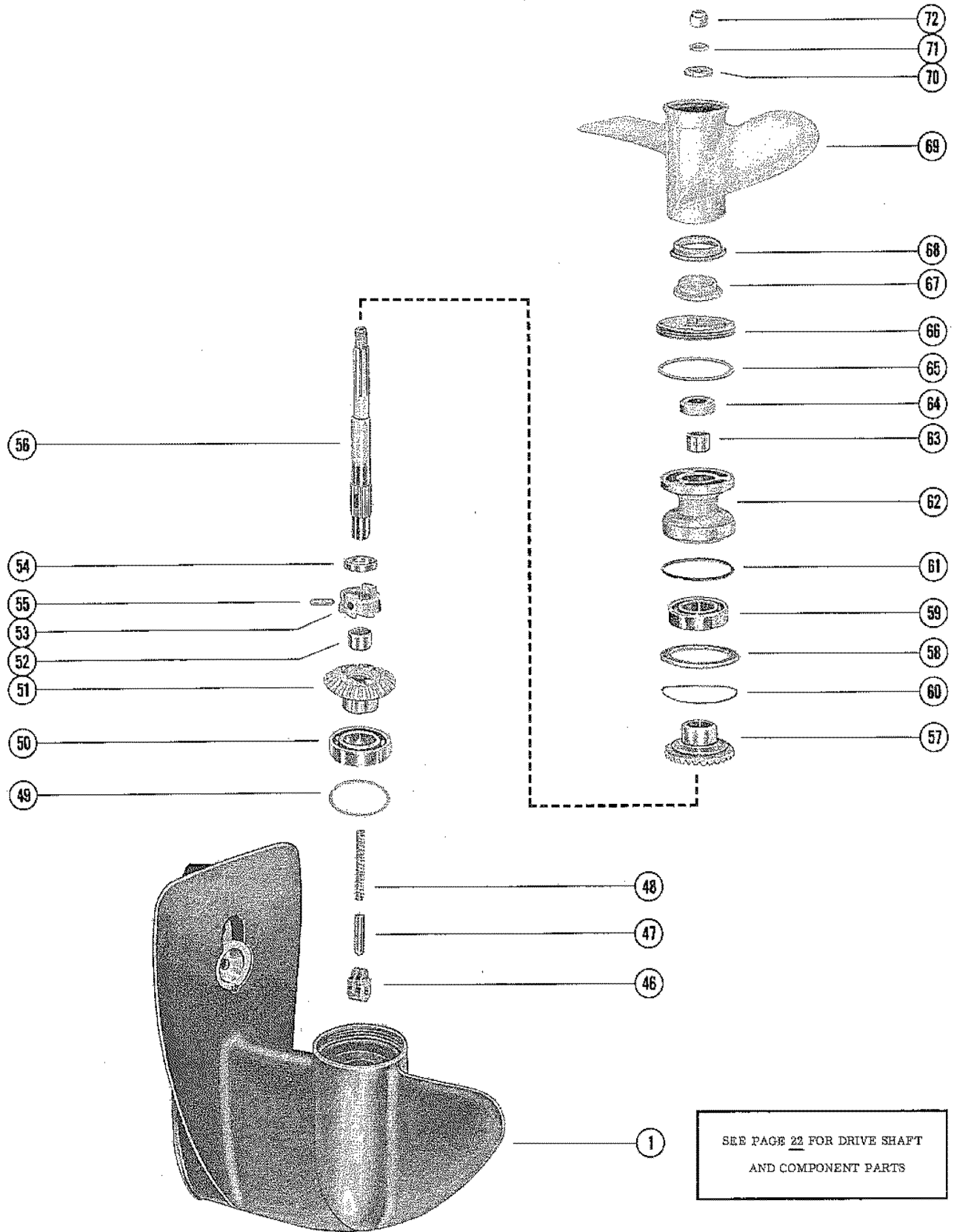


GEAR HOUSING ASSEMBLY, COMPLETE (PAGE 2)

REF. NO.	PART NO.	SYM.	QTY.	DESCRIPTION
-	1630-2643A32		1	GEAR HOUSING ASSEMBLY, COMPLETE (SHORT SHAFT) SERIAL #2798057-02938830
-	1630-2643A33		1	GEAR HOUSING ASSEMBLY, COMPLETE (LONG SHAFT) SERIAL #2798057-02938830
-	1630-4407A4		1	GEAR HOUSING ASSEMBLY, COMPLETE (SHORT SHAFT) SERIAL #3002814-09999999
-	1630-4407A5		1	GEAR HOUSING ASSEMBLY, COMPLETE (LONG SHAFT) SERIAL #3002814-09999999
1	1630-2643A9		1	GEAR HOUSING ASSEMBLY SEE PAGE 22 FOR PARTS BREAKDOWN. SERIAL #2798057-02938830
	1630-4407A1		1	GEAR HOUSING ASSEMBLY SERIAL #3002814-09999999
46	30599		1	CAM, SHIFT SERIAL #2798057-02938830
	58981		1	CAM SHIFT SERIAL #3002814-09999999
47	31334		1	FOLLOWER, SHIFT CAM
48	24-31333		1	SPRING, COMPRESSION - CAM FOLLOWER
49	15-30522A1		AR	SHIM, FORWARD GEAR BALL BEARING TO GEAR HOUSING (.022-3-5-1
50	30-21889		1	BEARING, BALL - FORWARD GEAR
51	43-48577		1	FORWARD GEAR ASSEMBLY
52	31-22458		1	BEARING, ROLLER - FORWARD GEAR
53	52-47581		1	RATCHET, SLIDING CLUTCH
54	53-32449		1	RING, RETAINING - CROSS PIN
55	17-30535		1	PIN, CROSS - RATCHET TO PROPELLER SHAFT
56	44-47851		1	SHAFT, PROPELLER
57	43-48578		1	REVERSE GEAR ASSEMBLY
58	12-30531		1	WASHER, THRUST - REVERSE GEAR
59	30-21889		1	BEARING, BALL - REVERSE GEAR
60	15-30532A1		AR	SHIM, THRUST WASHER TO GEAR HOUSING (.002-3-5-10)
61	25-30529		1	"O" RING, BEARING CARRIER
62	30541A1		1	BEARING CARRIER ASSEMBLY
63	31-22458		1	BEARING, ROLLER - BEARING CARRIER
64	26-30530		1	OIL SEAL, BEARING CARRIER
65	12-30528		1	WASHER, GEAR HOUSING COVER
66	30537		1	COVER, GEAR HOUSING
67	23-47871A2		1	THRUST HUB ASSEMBLY, PROPELLER SHAFT
68	12-53380		1	WASHER, CUPPED - THRUST HUB
69	48-47922A1		1	PROPELLER ASSEMBLY (2 BLADE - ALUMINUM - 9" PITCH) SHIPPED WITH ENGINE FROM FACTORY.
	48-47926A1		OPT.	PROPELLER ASSEMBLY (2 BLADE - ALUMINUM - 10" PITCH)

CONTINUED ON NEXT PAGE ➡

GEAR HOUSING ASSEMBLY, COMPLETE (PAGE 2)



GEAR HOUSING ASSEMBLY, COMPLETE (PAGE 2)

REF. NO.	PART NO.	SYM.	QTY.	DESCRIPTION
69	48-47924A1		OPT.	PROPELLER ASSEMBLY (2 BLADE - BRONZE - 10" PITCH)
	48-47670A1		OPT.	PROPELLER ASSEMBLY (3 BLADE - BRONZE ALUMINUM - 7" PITCH)
70	23-27024		1	SPACER, SPLINED - PROPELLER SHAFT
71	12-27025		1	WASHER, PROPELLER NUT SERIAL #2798057-02938830
72	11-34933		1	NUT, PROPELLER

PARTS INDEX

Part Number	Description	Pg.	Ref. No.	Part Number	Description	Pg.	Ref. No.
20155	RETAINER, STARTER			39027	SHIELD, TOP COWL - REAR	3	20
	SPRING	3	30	39029	HOUSING, THROTTLE		
20203	DISC, FRICTION - CLAMP				CONTROL	19	5
	PLATE AND SWIVEL			39033A1	LEVER ASSEMBLY,		
	BRACKET	37	33		THROTTLE CONTROL ...	19	23
20596A2	THROTTLE LEVER			39038	SOCKET, THROTTLE		
	ASSEMBLY	13	1		CONTROL	19	1
22373A1	THUMB SCREW ASSEMBLY	35	3	39039	STRIP, RUBBER - FRONT		
22789	"D" WASHER, CLIP SCREW	7	25		COVER	3	6
24789A1	FLUSHING ASSEMBLY	1	-	39043	SEAL, STARTER HOUSING		
26179	RETAINER, SHEAVER				TO TOP COWL	3	11
	SHAFT TO STARTER			39044	SEAL, RUBBER - ADAPTOR		
	SHEAVE	3	39		PLATE	27	4
27763	GRIP, RUBBER - STEERING			39047	SHAFT, SHIFT CONTROL ..	17	9
	HANDLE BODY	31	1	39051A1	PLATE ASSEMBLY, COVER -		
28748	RETAINER, STARTER				BOTTOM COWL	27	14
	CABLE AND HANDLE ...	5	46	39052	SEAL, ADAPTOR TO		
29359	LUBRICAP, GREASE				BOTTOM COWL	15	17
	FITTING	37	38	39058	SEAL, SHIFT HANDLE -		
30212	TERMINAL BLOCK,				BOTTOM COWL	27	17
	EXHAUST MANIFOLD			39068	PAD, SOUND - COVER		
	COVER SERIAL	21	32		PLATE	27	15
30537	COVER, GEAR HOUSING ..	43	66	39070	BOOT, RUBBER - THROTTLE		
30541A1	BEARING CARRIER				CONTROL SHAFT	31	27
	ASSEMBLY	43	62	39071	BLANKET, SOUND		
30595	PLATE, REAINER - STARTER				ABSORBING - TOP COWL	3	3
	PAWL	5	42	39080	BLANKET, SOUND		
30596	PAWL, STARTER	3	36		ABSORBING-TOP COWL-		
30599	CAM, SHIFT	43	46		TOP	3	2
30646A2	MOUNT ASSEMBLY, UPPER			39083	HANDLE, COWL LATCH ROD		
	AND LOWER	33	16		(PORT)	29	35
30690	PLATE, CLAMP - CO-PILOT .	37	34	39084	PLATE, SEAL - TOP COWL .	3	17
30782	HANDLE, STARTER CABLE .	5	45	39087	ROD, COWL LATCH -		
30815	LINK, REVERSE LOCK				BOTTOM COWL	27	31
	LEVER	35	19	39088A1	COWL LATCH ASSEMBLY,		
31001	INDICATOR, SPEED AND				TOP COWL	3	24
	LIMIT - STEERING			39093	SEAL, TOP COWL PLATE ..	3	18
	HANDLE	31	3	39098	HANDLE, COWL LATCH ROD		
31334	FOLLOWER, SHIFT CAM ...	43	47		(STARBOARD)	29	36
31430	COVER, TRANSFER PORT .	21	21	39099	BRACKET, COWL LATCH		
32021	BUMPER, LOWER THRUST -				ROD	27	32
	SADDLE	33	15	39144	MOUNT, RUBBER - BOTTOM		
32447	FOLLOWER, NUTRAL				COWL TO ADAPTOR		
	SPEED LIMITER	19	12	39145	PLATE (PORT)	27	19
32454	ADAPTOR, CHEKC UNIT				MOUNT RUBBER - RUBBER		
	(FUEL LINE)	15	16		- BOTTOM COWL TO		
34361	LINK, THROTTLE	7	28		ADAPTOR PLATE		
35558	SHAFT, SHEAVE	5	43		(STARBO	27	18
35860	CO-PILOT DISC	37	51	39146	MOUNT, RUBBER - BOTTOM		
35909	BODY ADN SHAFT,				COWL TO ADAPTOR		
	STEERING HANDLE BODY	31	2		PLATE (REAR)	27	28
36000	CAM, THROTTLE	7	26	39147	ADAPTOR, REAR MOUNT		
36107	STOP NUTRAL SPEED				TO BOTTOM COWL	27	25
	LIMITER	19	17	39323	HANDLE, SHIFT CONTROL .	17	1
38318	ROD, LINK - REVERSE LOCK			39565	SPOOL, NYLONG - TOP		
	LEVER SERIAL	35	24		COWL ALTCHING		
38938	BOOT, CABLE	7	14		(BOTTOM COWL)	27	22
38950A1	COVER ASSEMBLY, STOP			39601	PLATE, DETENT SPRING ..	17	14
	SWITCH	29	43				

PARTS INDEX

Part Number	Description	Pg.	Ref. No.	Part Number	Description	Pg.	Ref. No.
45757	TILT TUBE, CLAMP BRACKET TO SWIVEL BRACKER	35	6	55860	PULLEY, STARTER CABLE	3	13
45796	COVER, UPPER MOUNT	33	19	56069	ANCHOR, LATCH - BOTTOM COWL	27	10
46172	COVER, EXHAUST MANIFOLD	21	30	56188	COVER, IGNITION COIL	9	39
46235	{LATE, BAFFLE - EXHAUST MANIFOLD	21	28	56316A2	CABLE ASSEMBLY, CONTACT HOUSING (WHITE - 17")	7	13
46894	INSERT, WATER PUMP HOUSING	41	33	56317A1	CABLE ASSEMBLY, CONTACT HOUSING (BROWN - 17 3/4")	7	13
46895	PLATE, FACE - WATER PUMP HOUSING TO WATER PUMP COVER	41	36	56318A4	JUMPER WIRE ASSEMBLY, COIL TO COIL (8")	9	36
46896A2	WATER PUMP COVER ASSEMBLY	41	37	56352	BRACKET, COIL SUPPORT	9	42
46933A1	GROUND WIRE, COVER PLATE SCREW (3 5/8")	29	50	56377	SEAL, TOP COWL (42")	3	23
47212	LEVER, SHIFT CONTROL (REMOTE)	17	7	56636A1	LINK ASSEMBLY, REVERSE LOCK CONTROL LEVER	35	26
47259A1	BLOCK ASSEMBLY, DRIVE SHAFT LONG SHAFT	33	12	56637	LEVER, CONTROL - REVERSE LOCK	35	27
47604A1	PROTECTOR ASSEMBLY, SPARK PLUG	9	47	56663	ROD, REVERSE LOCK TO SWIVEL BRACKET	35	17
47679	BRACKET, STEERING ARM	31	22	56711A2	ADAPTOR PLATE ASSEMBLY	27	1
47742A1	UNIVERSAL JOINT ASSEMBLY	31	17	56712	NOZZLE, TELL TALE	29	40
47743	BOOT, UNIVERSAL JOINT	31	23	56757A1	JUMPER WIRE ASSEMBLY, STATOR TO THROTTLE LINK	7	33
47899A9	LEAD ASSEMBLY, HIGH TENSION	9	45	57186A2	STOP SWITCH ASSEMBLY	29	42
48003	PIVOT, STEERING HANDLE TO BRACKET	31	14	57821	GUIDE, ROPE - STARTER HOUSING	3	10
49556	HANDLE, STEERING	31	7	57845A1	GROUND WIRE, BOTTOM COWL (4 1/2")	29	49
49556A4	STEERING HANDLE ASSEMBLY, COMPLETE	31	-	58114A2	STARTER HOUSING ASSEMBLY(SERIAL #3002814 AND UP)	3	9
49558	KNCUKLE, STEERING HANDLE	31	8	58981	CAM SHIFT	43	46
53041	COVER, LOWER MOUNT	33	18	59000	THROTTLE LEVER	13	1
53188	LEVER, CHOKE SHUTTER	13	7	59065A1	STOP SWITCH ASSEMBLY (NOT AS SHOWN)	29	42
53191	SHUTTER AND SCREEN - CARBURETOR	13	3	59100	COVER, AIR INTAKE - BOTTOM COWL	27	14
53200	KNOB AND SHAFT - CHOKE	13	9	59107	HANDLE, SHIFT CONTROL	17	1
53238A3	FUEL PUMP ASSEMBLY	15	1	59170A3	THUMB SCREW ASSEMBLY	35	3
53241	BASE, FUEL PUMP	15	6	59355	LEVER, CONTROL - REVERSE LOCK	37	27
53245A1	DIAPHRAGM KIT, FUEL PUMP	15	3	59357	ROD, LINK - REVERSE LOCK LEVER	35	24
53267A1	REVERSE LOCK LEVER ASSEMBLY	35	20	59361A1	LINK ASSEMBLY, REVERSE LOCK CONTROL LEVER	37	26
53435	BRACKET, STOP	35	21	59796A1	GROUND WIRE, RUBBER MOUNT SCREW AND NUT (3")	29	52
54066	COVER, FUEL PUMP	15	7	10-20512	SCREW, TRIM COVER TO BOTTOM COWL (7/16")	33	6
54640A1	SHIFT SHAFT ASSEMBLY - LOWER (SHORT SHAFT)	39	14	10-20597	SCREW, THROTTLE LEVER TO CARBURETOR (3/8")	13	2
54640A1	SHIFT SHAFT ASSEMBLY - LOWER (SHORT SHAFT) SEE NOTE BELOW	17	17	10-20646	SCREW, REAR SHIELD TO TOP COWL (5/8")	3	21
54641A1	SHIFT SHAFT ASSEMBLY - LOWER (LONG SHAFT)	39	14	10-20665	SCREW, PORT COVER TO CYLINDER BLOCK (1/2")	21	22
54641A1	SHIFT SHAFT ASSEMBLY - LOWER (LONG SHAFT) SEE NOTE BELOW	17	17				
55851	LEVER, TILT STOP	37	44				

PARTS INDEX

Part Number	Description	Pg.	Ref. No.	Part Number	Description	Pg.	Ref. No.
10-21091	SCREW, CYLINDER BLOCK COVER TO CYLINDER BLOCK (1 1/8")	21	25	10-28668	SCREW, BAFFLE PLATE AND MANIFOLD COVER MOUNTING(7/8")	21	31
10-21807	SCREW, LIMITER TO CONTROL HOUSING	19	9	10-28707	SCREW, THROTTLE CAM TO CONTACT HOUSING (1/2")	7	27
10-22290	SCREW, DRIVE - INDICATOR TO STEERING HANDLE BODY	31	5	10-28707	SCREW, UPPER BEARING HOUSING(1/2")	21	19
10-22421	SCREW, THROTTLE CONTROL HOUSING TO CRANKCASE (1 1/4")	19	6	10-28710	SCREW, NEUTRAL SPEED LIMITER STOP TO FOLLOWER (5/8")	19	18
10-22483	SCREW, LATCH ANCHOR TO BOTTOM COWL (1 1/8")	27	11	10-28789	SCREW, CABLE PULLEY TO STARTER HOUSING(3/4")	3	14
10-22486	SCREW, ADAPTOR PLATE TO DRIVER SHAFT HOUSING (7/8")	27	6	10-28845	SCREW, PLUG - BODY CHANNEL	11	28
10-22486	SCREW, COWL LATCH BRACKET TO BOTTOM COWL (7/8")	29	33	10-29200	SCREW, FUEL PUMP TO ANCHOR (5/8")	15	21
10-22486	SCREW, REAR MOUNT ADAPTOR TO BOTTOM COWL (7/8")	27	26	10-29237	SCREW, RETAINING - TILT STOP LVER	37	45
10-22958	SCREW, ADAPTOR TO COWL (1 1/8")	15	18	10-29239	SCREW, THROTTLE LEVER CARBURETOR (1/2")	13	2
10-23015	SCREW, ADJUSTING - THROTTLE ADVANCE	19	26	10-29326	SCREW, CLAMP BRACKET TO BOAT TRANSOM (2 3/4")	35	11
10-23015	SCREW, ADJUSTING - THROTTLE CONTROL	21	37	10-30009	SCREW, AIR INTAKE COVER TO BOTTOM COW (3/8")	27	16
10-23178	SCREW, PLUG - MAIN NOZZLE	11	30	10-30009	SCREW, COVER PLATE TO BOTTOM COWL (3/8")	27	16
10-24233	SCREW, ADAPTOR TO COWL (1 3/8")	15	18	10-30009	SCREW, PLATE AND SEAL TO TOP COWL(3/8")	3	19
10-24624	SCREW, CRANKCASE TO CYLINDER BLOCK (1 3/4")	21	9	10-30009	SCREW, STOP SWITCH LEAD TO BOTTOM COWL (3/8")	29	51
10-25256	SCREW, JUMPER WIRE ATTACHING (5/16")	7	34	10-30376	SCREW, PINION GEAR TO DRIVE SHAFT	39	22
10-25764	SCREW, PLATE AND SPRING TO ADAPTOR PLATE	17	15	10-30663	SCREW, CONTACT HOUSING AND STATOR LEADS CLIP ATTACHING	7	24
10-25822	SCREW, STRAINER COVER	11	18	10-30663	SCREW, MAGNETO GROUND LEADS TO TERMINAL BLOCK	21	34
10-26801	SCREW, MAIN BEARING LOCKING	21	11	10-30675	SCREW, UPPER AND LOWER MOUNT COVER TO MOUNT (3/8")	33	20
10-27304	SCREW, REED STOP MOUNTING	23	8	10-30679	SCREW, CO-PILOT DISC TO SADDLE	37	52
10-27791	SCREW, ANCHOR - TILT STOP LEVER	37	47	10-30679	SCREW, STEERING ARM BRACKET TO SADDLE	31	28
10-28405	SCREW, PLUG - MAIN FUEL JET CHANNEL	11	34	10-31002	SCREW, SET - SPEED AND SHIFT INDICATOR	31	4
10-28634	SCREW, FLUSH - DRIVE SHAFT HOUSING	33	8	10-31208	SCREW, RUBBER MOUNT TO BOTTOM COWL(3/8")	27	20
10-28634	SCREW, GREASE FILLER HOLE	39	11	10-31294	SCREW, BRACKER TO CYLINDER BLOCK (1")	9	43
10-28642	SCREW, DRIVE - SERIAL PLATE TO SWIVEL BRACKET	37	43	10-31294	SCREW, CRANKCASE TO CYLINDER BLOCK (1")	21	8
10-28642	SCREW, WATER INTAKE SCREEN TO GEAR HOUSING	39	9	10-32228	SCREW, NYLON SPOOL TO BOTTOM COWL (5/8")	27	23
				10-32627	SCREW, FUEL PUMP TO BASE	15	9

PARTS INDEX

Part Number	Description	Pg.	Ref. No.	Part Number	Description	Pg.	Ref. No.
10-34439	SCREW LATCH TO TOP COWL (3/4")	3	27	11-20645	NUT, STATOR LEAD TO SOTP SWITCH	29	46
10-34696	SCREW, THROTTLE LINK TO THROTTLE LEVER AND CONTACT HOUSING (7	29	11-20645	NUT, THROTTLE CONTROL ADJUSTING SCREW	21	38
10-35519	SCREW. TERMINAL BLOCK TO EXHAUST MANIFOLD COVER	21	33	11-20696	NUT, FLYWHEEL	7	1
10-37655	SCREW, DETENT SPRING TO STEERING HANDLE	31	26	11-21971	NUT, STOP SWITCH TO BOTTOM COWL	29	48
10-39149	SCREW, SHIFT SHAFT BUSHING RETAINER	39	19	11-24652	NUT, POWERHEAD TO DRIVE SHAFT HOUSING STUDS	33	11
10-39154	SCREW, CONNECTING ROD	25	2	11-27164	NUT, COIL COVER SCREW	9	41
10-45817	SCREW, LOWER MOUNT COVER TO MOUNT (7/16")	33	20	11-28656	NUT, THROTTLE LINK SCREW	7	32
10-46962	SCREW, STARTER HOUSING TO CRANKCASE(1")	3	12	11-28941	NUT, SPEED LIMITER FOLLOWER STUD	19	16
10-47225	SCREW, BLOCK ASSEMBLY TO DRIVE SHAFT HOUSING LONG SHAFT	33	13	11-29598	NUT, CLAMP BRACKET STUDE FASTENING	35	10
10-52195	SCREW, FLOAT BOWL COVER (SHORT)	11	10	11-30499	NUT, TILT TUBE FASTENING	35	8
10-52196	SCREW FLOAT BOWL COVER (LONG)	11	11	11-34863	NUT, DRIVE SHAFT HOUSING STUDE (3/8 - 24)	33	3
10-55298	SCREW, SPRING TO CARBURETOR	13	6	11-34933	NUT, PROPELLER	45	72
10-56214	SCREW, STEERING HANDLE TO ARM BRACKER (5/8")	31	16	11-35045	NUT WATER PUMP HOUSING AND COVER STUDS	41	42
10-56266	SCREW, BREAKER TO CONTACT HOUSING (3/8")	7	12	11-35814	NUT, GEAR HOUSING TO DRIVE SHAFT HOUSING STUD (5/16 - 24	33	4
10-56336	SCREW, COVER TO CONTACT HOUSING (1/2")	7	20	11-39305	NUT, SHIFT HANDLE TO SHIFT CONTROL SHAFT	17	3
10-56354	SCREW, STARTER HOUSING TO CYLINDER BLOCK(1 1/4")	3	12	11-45076	NUT, IGNITION COIL TERMINAL	9	38
10-56543	SCREW, COIL COVER TO COIL MOUNTIN BRACKER (2 1/8")	9	40	11-46887	NUT, ADAPTOR PLATE TO REAR RUBBER MOUNT	27	30
10-56649	SCREW, CLAMP PLATE ADJUSTING	37	35	11-46887	NUT, ADAPTOR PLATE TO RUBBER MOUNT	27	21
10-56682	SCREW, CONTROL ELVER TO LINK	37	29	11-46887	NUT, BRACKER SCREW	9	44
10-56781	SCREW, MAIN BEARING CLAMPING	23	4	11-46887	NUT, CARBURETOR MOUNTING STUDS	11	38
10-57814	SCREW, STATOR TO END CAP (1 1/4")	7	9	11-46887	NUT, CO-PILOT DISC FASTENING SCREW	37	53
10-59795	SCREW, RUBBER MOUNT TO BOTTOM COWL (1/2")	27	20	11-46887	NUT, CRANKCASE FASTENING SCREW	21	10
11-20061	NUT, CONNECTING ROD SCREW	25	4	11-46887	NUT, CYLINDER BLOCK COVER MOUNTING SCREW	21	26
11-20088	NUT, JAM - SPEED LIMITER FOLLOWER STUD	19	13	11-46887	NUT, POWERHEAD TO DRIVE SHAFT HOUSING STUDS	33	11
11-20110	NUT, ADAPTOR SCREW	15	20	11-46887	NUT, STEERING ARM BRACKET FASTENING SCREW	31	29
11-20166	NUT, SHEAVE SHAFT (LEFT HAND THREAD)	3	29	11-46887	NUT, TILT STOP LEVER ANCHOR SCREW	37	49
11-20361	NUT, FRONT COVER STUD	3	8	11-56325	NUT, TILT STOP LEVER RETAINING SCREW	37	46
11-20361	NUT, SCTOR GEAR TO SHIFT CONTROL SHAFT	17	12	11-56374	NUT, CABLE INSULATOR	7	17
					NUT, CLAMP BRACKET SCREW	35	13

PARTS INDEX

Part Number	Description	Pg.	Ref. No.	Part Number	Description	Pg.	Ref. No.
12-20214	WASHER, THUMB SCREW .	35	4	13-21972	LOCKWASHER, STOP SWITCH CONNECTOR ..	29	47
12-20260	WASHER, GREASE FILLER HOLD SCREW	39	10	13-26992	LOCKERWASHER, THROTTLE CONTROL HOUSING SCREW	19	7
12-20260	WASHER, SEALING - FLUSH SCREW	33	9	13-26992	LOCKWASHER, COWL LATCH BRACKET SCREW	29	34
12-20262	WASHER, GREASE VENT HOLE SCREW	39	12	13-26992	LOCKWASHER, LATCH ANCHOR SCREW	27	12
12-20533	WASHER, WATER PUMP COVER	41	41	13-26992	LOCKWASHER, REAR MOUNT	27	29
12-22887	WASHER, CABLE PULLEY SCREW	3	15	13-26992	LOCKWASHER, REAR MOUNT ADAPTOR SCREW	27	27
12-24676	WASHER, NEUTRAL SPEED LIMITER STOP SCREW ..	19	19	13-26995	LOCKWASHER, FLOAT BOWL COVER SCREW ..	11	12
12-27025	WASHER, PROPELLER NUT	45	71	13-26996	LOCKWASHER, IGNITION COIL TERMINAL	9	37
12-29245	WASHER, SHIFT CONTROL SHAFT	17	11	13-26996	LOCKWASHER, NYLON SPOOL SCREW	27	24
12-29245	WASHER, SHIFT CONTROL SHAFT	17	2	13-26996	LOCKWASHER, REAR SHIELD SCREW	3	22
12-29245	WASHER, SPEED LIMITER FOLLOWER STUD	19	15	13-26996	LOCKWASHER, STATOR LEAD TO STOP SWITCH .	29	45
12-30528	WASHER, GEAR HOUSING COVER	43	65	13-29720	WASHER, WAVE - THROTTLE LINK SCREW	7	31
12-30531	WASHER, THRUST - REVERSE GEAR	43	58	13-34632	WASHER, WAVE - CONTROL LEVER SCREW	37	31
12-30971	WASHER, SPEED LIMITER FOLLOWER STUD	19	10	13-35629	WASHER, WAVE - CAM TENSION	7	6
12-31433	WASHER, NEEDLE BEARING RETAINING	25	5	13-36206	WASHER, WAVE - SHIFT CONTROL SHAFT	17	6
12-31782	WASHER, CLAMP BRACKET SCREW	35	12	13-36206	WASHER, WAVE - STARTER PAWL	3	35
12-34392	WASHER, THROTTLE LINK SCREW	7	30	13-39041	WASHER, WAVE - GEAR AND SHAFT (LOWER) ...	19	21
12-35559	WASHER, SHEAVE SHAFT RETAINER	3	40	13-48239	WASHER, WAVE - CLAMP PLATE ADJUSTING SCREW	37	37
12-36282	WASHER, FLYWHEEL NUT .	7	2	13-56076	WASHER, WAVE - CONTACT HOUSING TO UPPER BEARING HSG.	7	22
12-36554	WASHER, NYLON - WATER OUTLET TUBE (ADAPTOR PLATE)	27	2	13-59145	WASHER, WAVE - CONTACT HOUSING TO UPPER BEARING HSG.	7	22
12-36554	WASHER, NYLON - WATER PUMP COVER	41	39	14-20091	TAB WASHER, MAIN BEARING LOCKING SCREW	21	12
12-36555	WASHER, NYLON - INTAKE TUBE SEAL	39	7	14-20165	TAB WASHER, SHEAVE SHAFT NUT	3	28
12-37828	WASHER, SHIFT CONTROL SHAFT	17	5	14-30377	TAB WASHER, PINION GEAR TO DRIVE SHAFT SCREW	39	21
12-52864	WASHER, TILT TUBE - CLAMP TO SWIVEL BRACKER	35	5	15-30522A1	SHIM, FORWARD GEAR BALL BEARING TO GEAR HOUSING (.022-3-5-1	43	49
12-53380	WASHER, CUPPED - THRUST HUB	43	68	15-30527A1	SHIM DRIVE SHAFT BALL BEARING TO PUMP (.002-3-5-10)	39	27
12-56077	WASHER, WEAR - CONTACT HOUSING TO UPPER BEARING HSG.	7	21				
12-56681	WASHER, CONTROL ELVER FASTENING SCREW	37	30				
12-59061	WASHER, STATOR LEAD TO STOP SWITCH	29	44				
13-20160	WASHER, WAVE - RETAINER TENSION	5	41				
13-20846	WASHER, WAVE - LEVER ANCHOR SCREW	37	48				

PARTS INDEX

Part Number	Description	Pg.	Ref. No.	Part Number	Description	Pg.	Ref. No.
15-30532A1	SHIM, THRUST WASHER TO GEAR HOUSING (.002-3-5-10)	43	60	17-55453	PIN, DOWEL - MAIN BEARING	23	3
15-31412A1	SHIM, UPPER HOUSING TO CYLINDER BLOCK (.002-3-5-10)	21	13	17-55952A1	TILT LOCK PIN ASSEMBLY	35	14
15-48002015	SHIM, STEERING HANDLE PIVOT TO BRACKER (.015	31	15	18-56206	COTTERR PIN, REVERSE LOCK LEVER TO ROD	35	18
16-21723	STUD, CARBURETOR MOUNTING	21	5	19-56688	WELCH PLUG, CYLINDER BLOCK	21	3
16-33526	STUD, BLOCHE AND CRANKCASE TO DRIVE SHAFT HOUSING	21	4	21-28481A1	CHECK VALVE ASSEMBLY, CRANKCASE	21	2
16-56299	STUD, DRIVE SHAFT HOUSING TO GEAR HOUSING	33	2	21-30430A2	CHECK VALVE ASSEMBLY	15	2
16-58136	STUD, WATE RPUMP HOUSING TO GEAR HOUSING (2 3/4")	39	3	21-59174	SPRING, COMPRESSION - COWL LATCH	3	25
16-58138	STUD, GEAR HOUSING TO DRIVE SHAFT HOUSING (3 7/16")	39	2	22-25885	ELBOW, TELL TALE - CYLINDER BLOCK	21	7
16-59622	STUD, CLAMP BRACKET SPACER	35	9	22-31345	FITTING, GREASE - SWIVEL BRACKET	37	39
17-20032	PIN, DOWEL - LOCATING	39	5	22-53553	ELBOW, CYLINDER LBOCK TO PRESSURE HOSE (45)	15	13
17-20032	PIN, DOWEL - MAIN BEARING	23	3	22-54090	ELBOW, FUEL PUMP OUTLET	15	8
17-20032	PIN, DOWEL - MAIN BEARING TO BLOCK	23	5	23-22981	BUSHING, NYLONG- COWL LATCH ROD TO BOTTOM COWL 2	29	37
17-21438	PIN, DOWEL - CRANKCASE TO CYLINDER BLOCK	21	6	23-26841	BUSHING, NYLON - GEAR AND SHAFT (UPPER)	19	24
17-22896	PIN, RETAINER - STARTER CABLE	3	34	23-26856	BUSHING, NYLON - REVERSE LOCK LEVER ROD	35	16
17-22896	PIN, ROLL - THROTTLE CONTROL ELVER TO GEAR AND SHAFT	19	25	23-27024	SPACER, SPLINED - PROPELLER SHAFT	45	70
17-24800	PIN, ROLL - GEAR TO THROTTLE CONTROL SOCKET	19	4	23-28100	BUSHING, NYLON - STEERING HANDLE	31	10
17-25319	PIN, ROLL - HANDLE TO COWL LATCH ROD	29	38	23-28912	BUSHING, STARTER SPRING GUIDE	3	32
17-26862	PIN, BALL GEAR TO STEERING HANDLE SHAFT	31	12	23-28919	BUSHING, NYLON - SHEAVE SHAFT SPACER	3	37
17-26862	PIN, BALL GEAR TO UNIVERSAL JOINT	31	20	23-30676A1	BUSHING ASSEMBLY, SHFIT SHAFT	39	16
17-27006	PIN, ROLL - SWIVEL BRACKET CONTROL LEVER	35	25	23-30677	BUSHING, NYLON - STEERING HANDLE TO BODY	31	6
17-27006	PIN, ROLL -SWIVEL BRACKET CONTROL ELVER	35	25	23-30677	BUSHING, NYLON - UPPER SHIFT SHAFT	17	16
17-30535	PIN, CROSS - RATCHET TO PROPELLER SHAFT	43	55	23-30678	BUSHING, NYLON - SHIFT CONTROL SHAFT	17	4
17-30688	SWIVEL PIN, SWIVEL BRACKET TO SADDLE	37	50	23-30813	SPACER, TUBE - REVERSE LOCK LEVER ROD	35	15
17-39049	PIN, SHIFT ELVER TO SHIFT CONTROL SHAFT	17	8	23-30868	BUSHING, NYLON - GEAR AND SHAFT TO THROTTLE CONTROL HOUSING	19	22
17-39095	PIN, ROLL - SPRING TO COWL LATCH	3	26	23-30972	BUSHING, SPEED LIMITER FOLLOWER STUD	19	11
				23-30977	SPACER, CABLE PULLEY	3	16
				23-31011	BUSHING, NYLONG - THROTTLE CONTROL SOCKET	19	2
				23-31309	SPACER, CONTROL ELVER SCREW	37	28

PARTS INDEX

Part Number	Description	Pg.	Ref. No.	Part Number	Description	Pg.	Ref. No.
23-35560	SPACER, SHEAVE SHAFT	3	38	26-33613	SEAL, WATE RINTAKE TUBE	41	31
23-39578	SPACER, FRONT COVER STUD	3	7	26-36556	SEAL, RUBBER - WATER OUTLET TUBE (ADAPTOR PLATE) 4	27	3
23-47818	BUSHING, STEERING ARM BRACKET	31	24	26-36558	SEAL, WATER PUMP COVER	41	38
23-47871A2	THRUST HUB ASSEMBLY, PROPELLER SHAFT	43	67	26-56397	OIL SEAL, CRANKCASE (LOWER)	21	36
23-48005	SLEEVE, UNIVERSAL JOINT	31	18	26-56741	OIL SEAL, UPPER BEARING HOUSING	21	17
23-49555	BUSHING, RUBBER - STEERING HANDLE	31	9	27-22023	GASKET, CARBURETOR FLANGE	11	37
23-56639	SPACER, CONTROL ELVER SCREW	35	28	27-31434	GASKET, TRANSFER PORT COVER	21	20
24-28357	SPRING, ADAPTOR SCREW	15	19	27-31436	GASKET, CYLINDER BLOCK	21	24
24-31333	SPRING, COMPRESSION - CAM FOLLOWER	43	48	27-39050	GASKET, ADAPTOR PLATE TO DRIVE SHAFT HOUSING	33	10
24-31918	SPRING, TENSION - REVERSE LOCK LEVER	35	23	27-39050	GASKET, ADAPTOR PLATE TO DRIVE SHAFT HOUSING 4	27	8
24-39042	SPRING, NEUTRAL SPEED LIMITER FOLLOWER	19	8	27-45748	GASKET, POWERHEAD TO PLATE 4	27	5
24-39627	SPRING, DETENT - SHIFT CONTROL LEVER	17	13	27-46233	GASKET, BAFFLE PLATE TO EXHAUST MANIFOLD COVER	21	29
24-45073A1	SPRING STARTER REWIND	3	31	27-46233	GASKET, CYLINDER BLOCK TO BAFFLE PLATE	21	27
24-47744	SPRING, DETENT - STEERING HANDLE	31	25	27-46233A2	GASKET SET (MOTOR OVERHAUL)	1	-
24-53190	SPRING, TENSION - CHOKE LEVER SHAFT	13	8	28-20094	KEY, FLYWHEEL DRIVE	7	4
24-53310	SPRING, CHOKE SHUTTER TO LEVER	13	4	28-56655	KEY, IMPELLER DRIVE	41	34
24-53456	SPRING, EXTENSION - STOP BRACKET	35	22	29-26815	BEARING, NEEDLE - CRANKPIN	25	3
24-55299A1	SPRING ASSEMBLY, CHOKE SHUTTER	13	5	29-31505	BEARING, NEEDLE - PISTON PIN	25	6
25-20863	"O" RING, UPPER BEARING HOUSING	21	18	30-20861	BEARING, BALL - CRANKCASE (LOWER)	21	35
25-21720	"O" RING, UPPER - DRIVE SHAFT	41	45	30-20861	BEARING, BALL - UPPER BEARING HOUSING	21	15
25-25439	"O" RING, SWIVEL BRACKET	37	41	30-21889	BEARING, BALL - FORWARD GEAR	43	50
25-26802	"O" RING, SHIFT SHAFT BUSHING	39	17	30-21889	BEARING, BALL - REVERSE GEAR	43	59
25-29439	"O" RING, WATER PUMP HOUSING	39	29	30-33076	BEARING, BALL - DRIVE SHAFT	39	25
25-30526	RING, RUBBER - CENTRIFUGAL SLINGER (DRIVE SHAFT)	41	43	31-22458	BEARING, ROLLER - BEARING CARRIER	43	63
25-30529	"O" RING, BEARING CARRIER	43	61	31-22458	BEARING, ROLLER - FORWARD GEAR	43	52
25-36284	"O" RING, FLYWHEEL NUT	7	3	31-22756	BEARING, ROLLER - DRIVE SHAFT	39	4
25-39054	GROMMET, CHOKE SHAFT - BOTTOM COWL	27	13	31-31410	BEARING, FOLLER - UPPER BEARING HOUSING	21	16
25-39086	GROMMET, COWL LATCH - TOP COWL	3	4	32-34293	TUBE, WATER INTAKE	41	32
26-30530	OIL SEAL, BEARING CARRIER	43	64	32-34395A1	TUBE, TELL TALE (11")	29	39
26-30696	OIL SEAL, SHIFT SHAFT BUSHING	39	18	32-39061	TUBE, WATER OUTLET (SHORT SHAFT)	33	7
26-30900	OIL SEAL, WATER PUMP HOUSING	41	30	32-39062	TUBE, WATER OUTLET (LONG SHAFT)	33	7
26-30913	OIL SEAL, WATER PUMP COVER	41	40				

PARTS INDEX

Part Number	Description	Pg.	Ref. No.	Part Number	Description	Pg.	Ref. No.
32-52742A1	HOSE, PRESSURE - FUEL PUMP (7 1/8")	15	12	53-26406	RING, RETAINING - UPPER AND LOWER MOUNT	33	17
32-56341	FUEL LINE, FUEL PUMP TO CARBURETOR (5")	15	11	53-30523	RING, RETAINING - BALL BEARING TO DRIVE SHAFT	39	26
33-58194	SPARK PLUG (AC #V10FFK)	9	48	53-32449	RING, RETAINING - CROSS PIN	43	54
34-20053	REED STOP, MAIN BEARING REED VALVES	23	7	53-53204	RING, RETAINING - BALL GEAR	31	13
34-31942A1	REED SET, MATCHED - MAIN BEARING	23	6	53-53204	RING, RETAINING - BALL GEAR	31	21
35-33425	SCREEN, WATER INTAKE	39	8	54-20387	CLAMP, PRESURE HOSE FASTENING	15	14
37-56629A1	DECAL SET	1	-	54-30954	CLAMP, SAFETY CHAIN - TILT TUBE	35	7
37-56629A2	DECAL SET	1	-	54-39788	CLAMP, STOP SWITCH LEAD - SPEED LIMITER FOLLOWER STUD	19	14
38-31042	SERIAL PLATE	37	42	90-59344	MERC 110 PARTS LIST	1	-
39-21665A12	RING, PISTON	25	9	112-20214	WASHER THUMB SCREW	35	4
40-21666	LOCK RING, PISTON PIN	25	8	112-24812	WASHER, CONTROL LEVER SCREW	37	32
43-30802	GEAR, SECTOR - SHIFT CONTROL SHAFT (HORIZONTAL)	17	10	113-26992	LOCKWASHER, ADAPTOR PLATE SCREW	27	7
43-39030	GEAR, HORIZONTAL - THROTTLE CONTROL SOCKET	19	3	160-4407A4	GEAR HOUSING ASSEMBLY, COMPLETE (SHORT SHAFT)	39	-
43-39031	GEAR AND SHAFT, THROTTLE CONTROL	19	20	223-59573	SPACER, CLAMP PLATE ADJUSTING SCREW	37	36
43-48577	FORWARD GEAR ASSEMBLY	43	51	239-4174A1	FLYWHEEL ASSEMBLY	7	5
43-48578	REVERSE GEAR ASSEMBLY	43	57	332-2854	NIPPLE, IGNITION COIL	9	46
43-48579	GEAR, PINION	39	20	336-3928	CAM, BREAKER	7	7
43-53205	GEAR, BALL - STEERING HANDLE SHAFT	31	11	336-3955A1	COIL ASSEMBLY, IGNITION (SERIAL #2798057 THRU 2938830)	7	35
43-53205	GEAR, BALL - UNIVERSAL JOINT	31	19	336-3979A1	HOUSING ASSEMBLY, CONTACT	7	10
43-55447	GEAR SECTOR - SHIFT SHAFT SEE NOTE BELOW	17	18	336-3981	INSULATOR, CABLE TO CONTACT HOUSING	7	16
44-47851	SHAFT, PROPELLER	43	56	336-3987	HOLDER, CONTACT HOUSING	7	18
45-39077	DRIVE SHAFT (LONG SHAFT)	39	23	336-3988A1	COVER ASSEMBLY, CONTACT HOUSING	7	19
45-39078	DRIVE SHAFT (SHORT SHAFT)	39	23	336-3989	WICK, CAM WIPER - CONTACT HOUSING	7	15
46-46893A2	RESISTANT WATER PUMP	1	-	336-3996A4	STATOR ASSEMBLY	7	8
46-46893A3	WATER PUMP HOUSING ASSEMBLY	39	28	336-3996A7	STATOR ASSEMBLY	7	8
47-39074	IMPELLER, WATER PUMP	41	35	336-4318A3	BREAKER ASSEMBLY, CONTACT HOUSING	7	11
48-47670A1	PROPELLER ASSEMBLY (3 BLADE - BRONZE ALUMINUM - 7" PITCH)	45	69	336-4409A1	COIL ASSEMBLY, IGNITION (SERIAL #3002814 AND UP)	9	35
48-47922A1	PROPELLER ASSEMBLY (2 BLADE - ALUMINUM - 9" PITCH)	43	69	336-4429	HOLDER, CONTACT HOUSING	7	18
48-47924A1	PROPELLER ASSEMBLY (2 BLADE - BRONZE - 10" PITCH)	45	69	421-2224	CRANKSHAFT	23	1
48-47926A1	PROPELLER ASSEMBLY (2 BLADE - ALUMINUM - 10" PITCH)	43	69	532-1938A6	MAIN BEARING ASSEMBLY (VALVE TYPE)	23	2
50-30594A1	STARTER SHEAVE ASSEMBLY	3	33	545-26550	CLIP, CONTACT HOUSING AND STATOR LEADS	7	23
50-30823A1	STARTER CABLE ASSEMBLY	5	44				
52-47581	RATCHET, SLIDING CLUTCH	43	53				

PARTS INDEX

Part Number	Description	Pg.	Ref. No.	Part Number	Description	Pg.	Ref. No.
719-3374A2	PISTON/PIN ASSEMBLY . . .	25	7	1630-4407A5	GEAR HOUSING ASSEMBLY, COMPLETE (LONG SHAFT)	39	-
837-2756A2	CYLINDER BLOCK AND CRANKCASE ASSEMBLY	21	1				
1019-3944	COVER, CYLINDER BLOCK .	21	23	1630-4407A5	GEAR HOUSING ASSEMBLY, COMPLETE (LONG SHAFT)	43	-
1141-3971A1	BEARING HOUSING ASSEMBLY, UPPER (NOT AS SHOWN)	21	14	2123-3668	COWL, TOP	3	1
1334-4106	CARBURETOR ASSEMBLY, COMPLETE (KB-11A)	11	1	2124-3995	COWL, BOTTOM	27	9
1399-110A1	FLOAT ASSEMBLY	11	2	2124-4416A2	COWL ASSEMBLY, BOTTOM	27	9
1399-1133	COVER, FLOAT BOWL	11	9	2128-2667A8	COVER ASSEMBLY, FRONT	3	5
1399-1138	INLET NEEDLE, SEAT AND GASKET	11	6				
1399-1716	SHAFT, THROTTLE	11	21				
1399-1717	GASKET AND PACKING SET	11	--				
1399-1754	SCREEN, FILTER	11	14				
1399-1765	JET MAIN FUEL (.045)	11	31				
1399-1767	JET, MAIN FUEL (.047) - STANDARD	11	31				
1399-1864	JET, MAIN FUEL (.043)	11	31				
1399-3690	COVER, STRAINER	11	16				
1399-3740	SCREW, IDLE ADJUSTMENT	11	35				
1399-3763	SHUTTER, THROTTLE	11	25				
1399-4206	REPAIR PARTS KIT	11	--				
1399-97	LEVER, THROTTLE STOP . .	11	20				
1454-1788	SWIVEL BRACKET	37	40				
1458-2328A1	CLAMP BRACKET ASSEMBLY (PORT)	35	1				
1458-2328A1	CLAMP BRACKET ASSEMBLY (PORT)	35	1				
1459-2329A1	CLAMP BRACKET ASSEMBLY (STARBOARD)	35	2				
1467-4426A1	CLAMP BRACKET ASSEMBLY (STABOARD)	35	2				
1556-4030A1	DRIVE SHAFT HOUSING ASSEMBLY (SHORT SHAFT)	33	1				
1558-4031A1	DRIVE SHAFT HOUSING ASSEMBLY (LONG SHAFT)	33	1				
1559-2644	SADDLE	33	14				
1630-2643A32	GEAR HOUSING ASSEMBLY, COMPLETE (SHORT SHAFT)	39	-				
1630-2643A32	GEAR HOUSING ASSEMBLY, COMPLETE (SHORT SHAFT)	43	-				
1630-2643A33	GEAR HOUSING ASSEMBLY, COMPLETE (LONG SHAFT)	39	-				
1630-2643A33	GEAR HOUSING ASSEMBLY, COMPLETE (LONG SHAFT)	43	-				
1630-2643A9	GEAR HOUSING ASSEMBLY	43	1				
1630-2643A9	GEAR HOUSING ASSEMBLY (SERIAL THRU)	39	1				
1630-4407A1	GEAR HOUSING ASSEMBLY	43	1				
1630-4407A1	GEAR HOUSING ASSEMBLY (SERIAL AND UP)	39	1				