



PARTS CATALOG

II TR STERN DRIVE (2.00 RATIO)

SERIAL NUMBER

II-TR 1973-1976 3377316 THRU 4794899

TABLE OF CONTENTS:

DRIVE SHAFT HOUSING ASSEMBLY AND GEAR ASSEMBLY	12
GEAR HOUSING ASSEMBLY, COMPLETE	16
GIMBAL HOUSING AND BELL HOUSING	8
GIMBAL RING AND STEERING LEVER	4
HYDRAULIC PUMP AND TRIM CONTROL PANEL	20
HYDRAULIC PUMP ASSEMBLY, COMPLETE	28
PARTS INDEX	30
POWER TRIM CYLINDER REPAIR KITS	26
TRANSOM PLATE	2
TRIM CYLINDERS AND HYDRAULIC HOSES	24

NOTE: *Indented description indicate that these parts are included in preceding assembly.*

AR = As Required

NSS = Not Sold Separate

OPT = Optional

NS = Not Shown

THESE PARTS BOOKS/FICHE CARD ARE COPYRIGHTED AND MAY NOT BE DISTRIBUTED OR REPRODUCED IN ANY OTHER FORMAT BY ANYONE OTHER THAN MERCURY MARINE WITHOUT THE PRIOR WRITTEN CONSENT OF MERCURY MARINE.

REPLACEMENT PARTS ! WARNING !

Electrical, ignition and fuel system components on MerCruiser Engines and Stern Drives are designed and manufactured to comply with U.S. Coast Guard Rules and Regulations to minimize risks of fire or explosion. Use of replacement electrical, ignition or fuel system components, which do not comply to these rules and regulations, could result in a fire or explosion hazard and should be voided.

When servicing the electrical, ignition and fuel systems, it is extremely important that all components are properly installed and tightened. If not, any electrical or ignition component opening would permit sparks to ignite fuel vapors from fuel system leaks, if they existed.

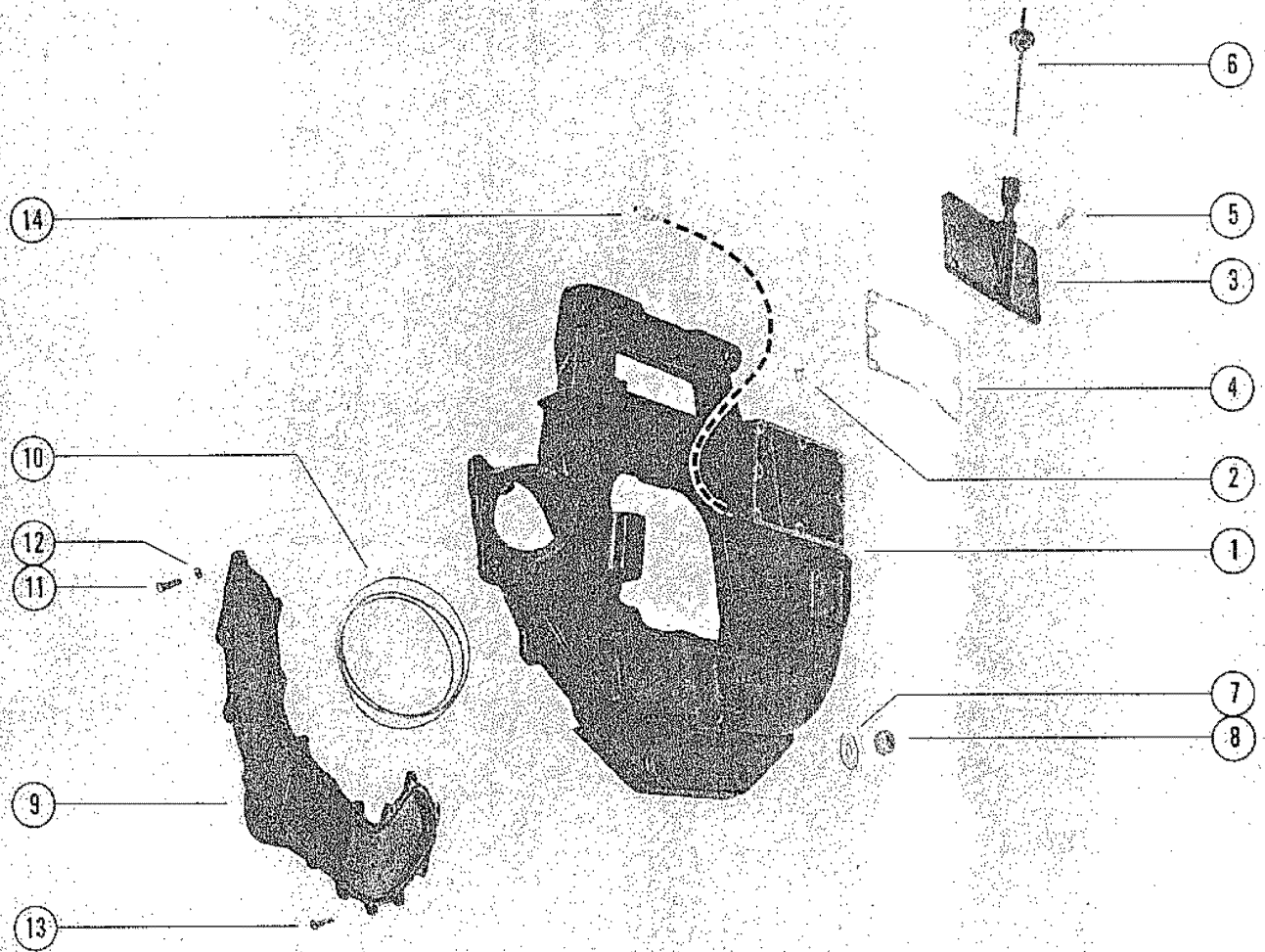
ENGINE MECHANICAL COMPONENTS

Many of the engine mechanical components are designed for marine applications. Unlike automotive engines, marine engines are subjected to extended periods of heavy load and wide- open-throttle operation, therefore, require heavy-duty components. Special marine engine parts have design and manufacturing specifications, which are required to provide long life and dependable performance. Marine engine parts also must be able to resist the corrosive action of salt or brackish water that will rust or corrode standard automotive parts within a short period of time.

Failure to use recommended Mercury Precision Parts OR Quicksilver service replacement parts can result in poor engine performance and/or durability, rapid corrosion of parts subjected to salt water and possibly complete failure of the engine.

Use of parts other than recommended service replacement parts will void the warranty on those parts which are damaged as a result of the use of other than recommended parts.

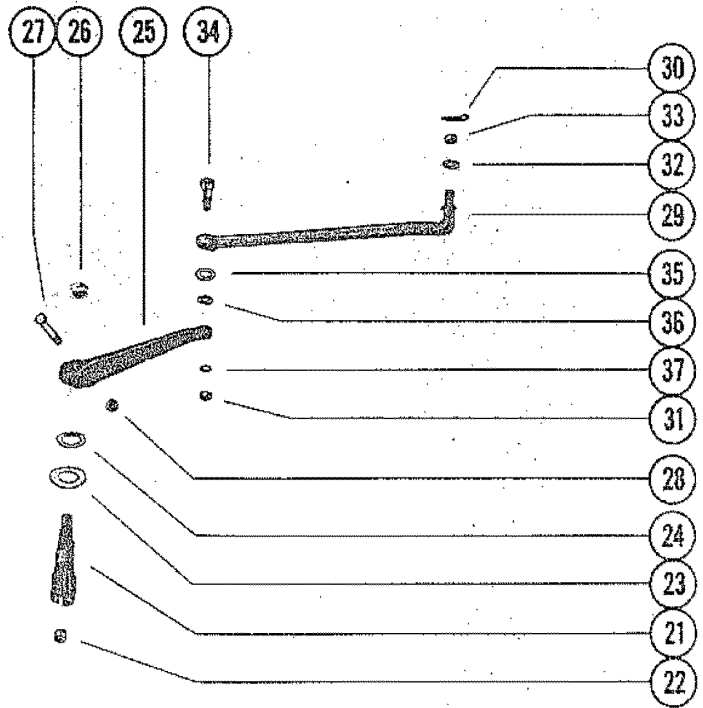
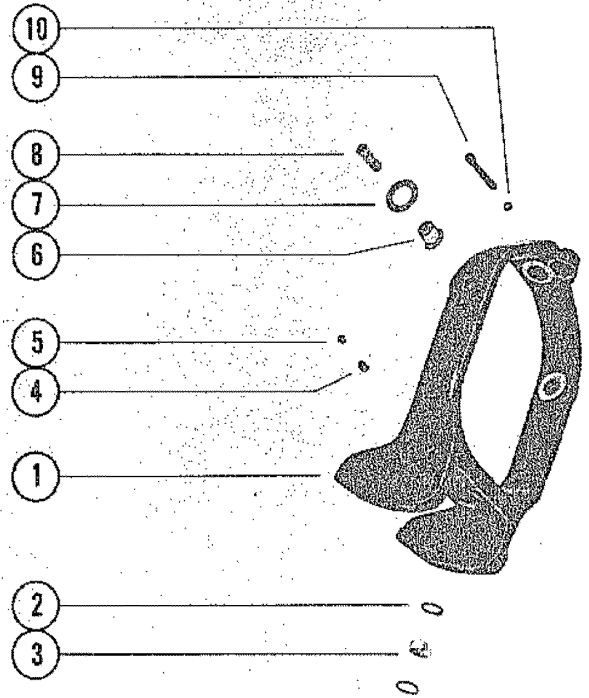
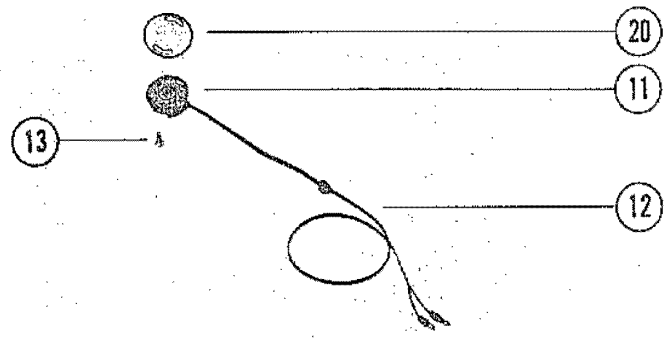
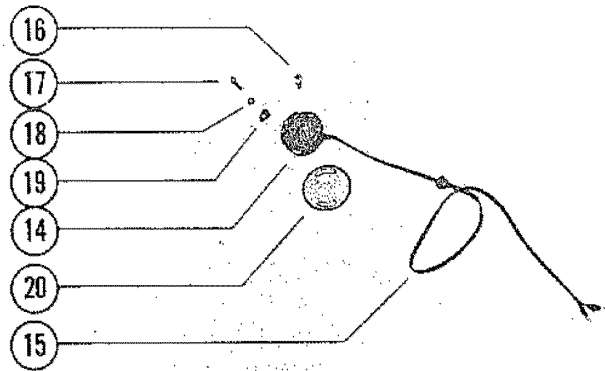
TRANSOM PLATE



TRANSOM PLATE

REF. NO.	PART NO.	SYM.	QTY.	DESCRIPTION
1	62952		1	PLATE, TRANSOM
2	22-47902		1	VENT, OIL RESERVIOR (TRANSOM PLATE)
3	54244A1		1	COVER ASSEMBLY, OIL RESERVIOR - TRANSOM PLATE
4	27-54307		1	GASKET, OIL RESERVIOR COVER
5	10-54523		8	SCREW, OIL RESERVIOR COVER TO TRANSOM PLATE (1")
6	55083		1	DIPSTICK, OIL LEVEL - OIL RESERVIOR
7	12-34876		8	WASHER, GIMBAL HOUSING TO TRANSOM PLATE STUD
8	11-35000		8	NUT, GIMBAL HOUSING TO TRANSOM PLATE STUD
9	54234		1	COVER, EXHAUST
10	55897		1	SEAL, EXHAUST COVER
11	10-20639		15	SCREW, EXHAUST COVER TO TRANSOM PLATE (1 1/8")
12	11-29250		15	NUT, EXHAUST COVER SCREW
13	10-24234		2	SCREW, EXHAUST COVER TO TRANSOM PLATE - BOTTOM (1")
14	22-34982		1	CONNECTOR, TRANSOM PLATE (OIL HOSE)
	37-39395		1	DECAL, SERIAL NUMBER

GIMBAL RING AND STEERING LEVER

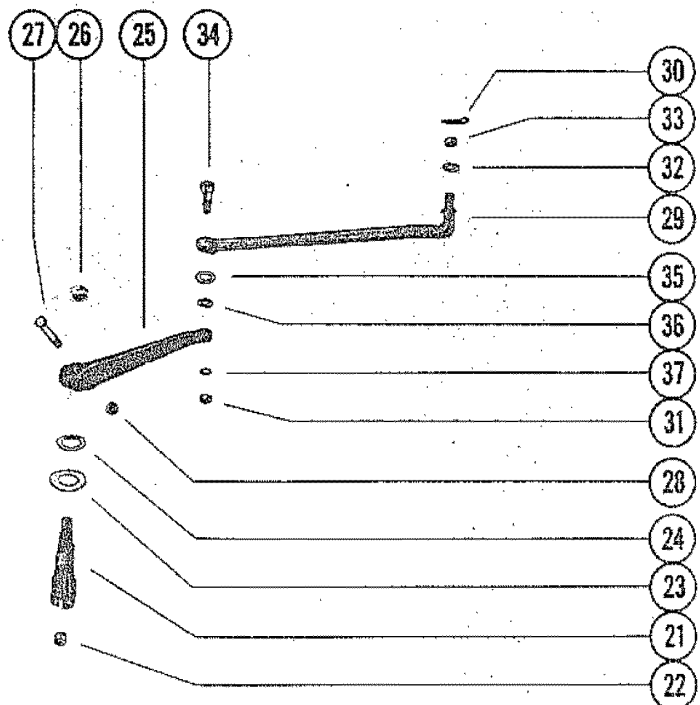
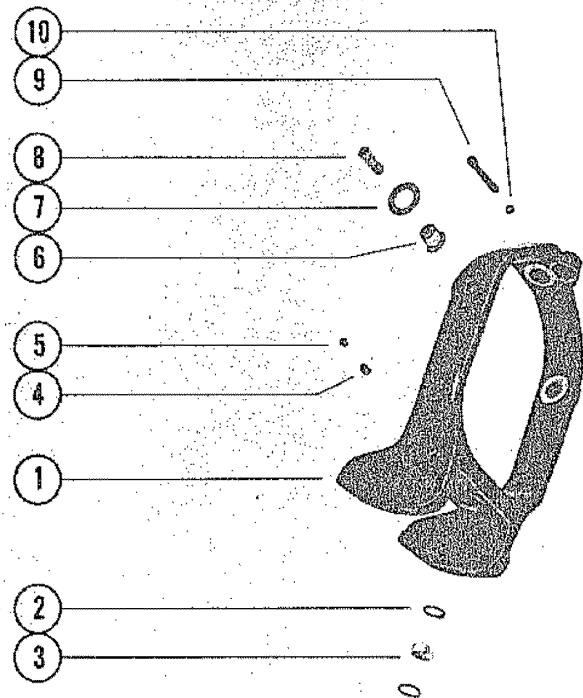
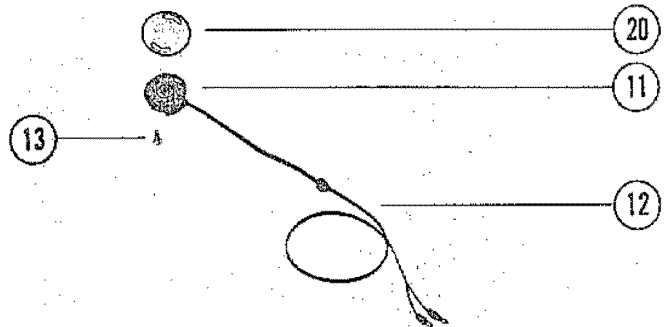
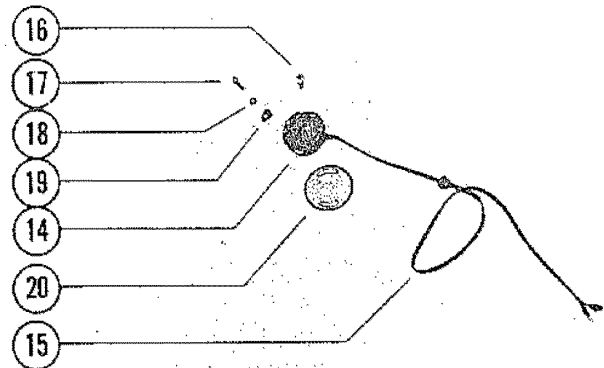


GIMBAL RING AND STEERING LEVER

REF. NO.	PART NO.	SYM.	QTY.	DESCRIPTION
1	77011A7		1	GIMBAL RING ASSEMBLY
2	26-54927		2	OIL SEAL, GIMBAL RING
3	31-54928		1	ROLLER BEARING, GIMBAL RING(SWIVEL PIN)
4	22-69059		1	FITTING, GREASE - GIMBAL RING
5	29359		1	LUBRICAP, GIMBAL RING GREASE FITTING
6	23-54002		2	BUSHING, GIMBAL RING (HINGE PIN)
7	12-54019		2	WASHER, ANTI-GALLING-BELL HOUSING (HINGE PIN)
8	17-59812		2	PIN, HINGE - GIMBAL RING TO HOUSING (12 POINT SOCKET)
9	10-45833		1	SCREW, UPPER SWIVEL SHAFT RETAINING - GIMBAL RING (2 1/2")
10	12-20546		1	WASHER, UPPER SWIVEL SHAFT RETAINING SCREW
11	63115A2		1	SWITCH ASSEMBLY, TRIM LIMIT (PORT SIDE)
12	84-63405		1	HARNESS, TRIM LIMIT SWITCH
13	10-63400		4	SCREW, HARNESS ATTACHING (5/32")
14	63115A1		1	SENDER ASSEMBLY, TRIM INDICATOR (STARBOARD SIDE) WITH TRIM GAUGE IN INSTRUMENT PANEL
15	84-63406		1	HARNESS, TRIM INDICATOR SENDER WITH TRIM GAUGE IN INSTRUMENT PANEL
16	10-63400		4	SCREW, HARNESS ATTACHING (5/32") WITH TRIM GAUGE IN INSTRUMENT PANEL
14	64947		1	SENDER, DUMMY (STARBOARD SIDE) WITH VACUUM GAUGE IN INSTRUMENT PANEL
15	84-64987		1	HARNESS, DUMMY SENDER WITH VACUUM GAUGE IN INSTRUMENT PANEL
16	10-46942		2	SCREW, HARNESS ATTACHING (5/16") WITH VACUUM GAUGE IN INSTRUMENT PANEL
17	10-37978		4	SCREW, TRIM SENDER AND SWITCH TO GIMBAL RING (3/4")
18	13-26996		4	LOCKWASHER, TRIM SENDER AND SWITCH SCREW
19	57008		4	RETAINER, TRIM SENDER AND SWITCH SCREW
20	85-63990		2	INSULATOR, SWITCH AND SENDER TO GIMBAL RING
21	54404		1	SHAFT, UPPER SWIVEL - GIMBAL RING TO GIMBAL HOUSING
22	22-32561		1	PLUG, PIPE - UPPER SWIVEL SHAFT
23	12-54026		1	WASHER, UPPER SWIVEL SHAFT (2"O.D.)
24	12-54027		1	WASHER, UPPER SWIVEL SHAFT (1 5/8" O.D.)
25	54666		1	LEVER, STEERING (USE WITH LINK ROD NOT DRILLED FOR COTTER PI
	66545		1	LEVER, STEERING(USE WITH LINK ROD DRILLED FOR COTTER PIN)
26	11-25599		1	NUT, STEERING LEVER TO UPPER SWIVEL SHAFT
27	10-68479		1	SCREW, STEERING LEVER TO UPPER SWIVEL SHAFT (2 1/4")
28	11-34933		1	NUT, STEERING LEVER SCREW
29	35431A1		1	LINK ROD ASSEMBLY, STEERING LINK ROD NOT DRILLED FOR COTTER PIN
31	11-20509		1	NUT, LINK ROD BOLT LINK ROD NOT DRILLED FOR COTTER PIN

CONTINUED ON NEXT PAGE ➡

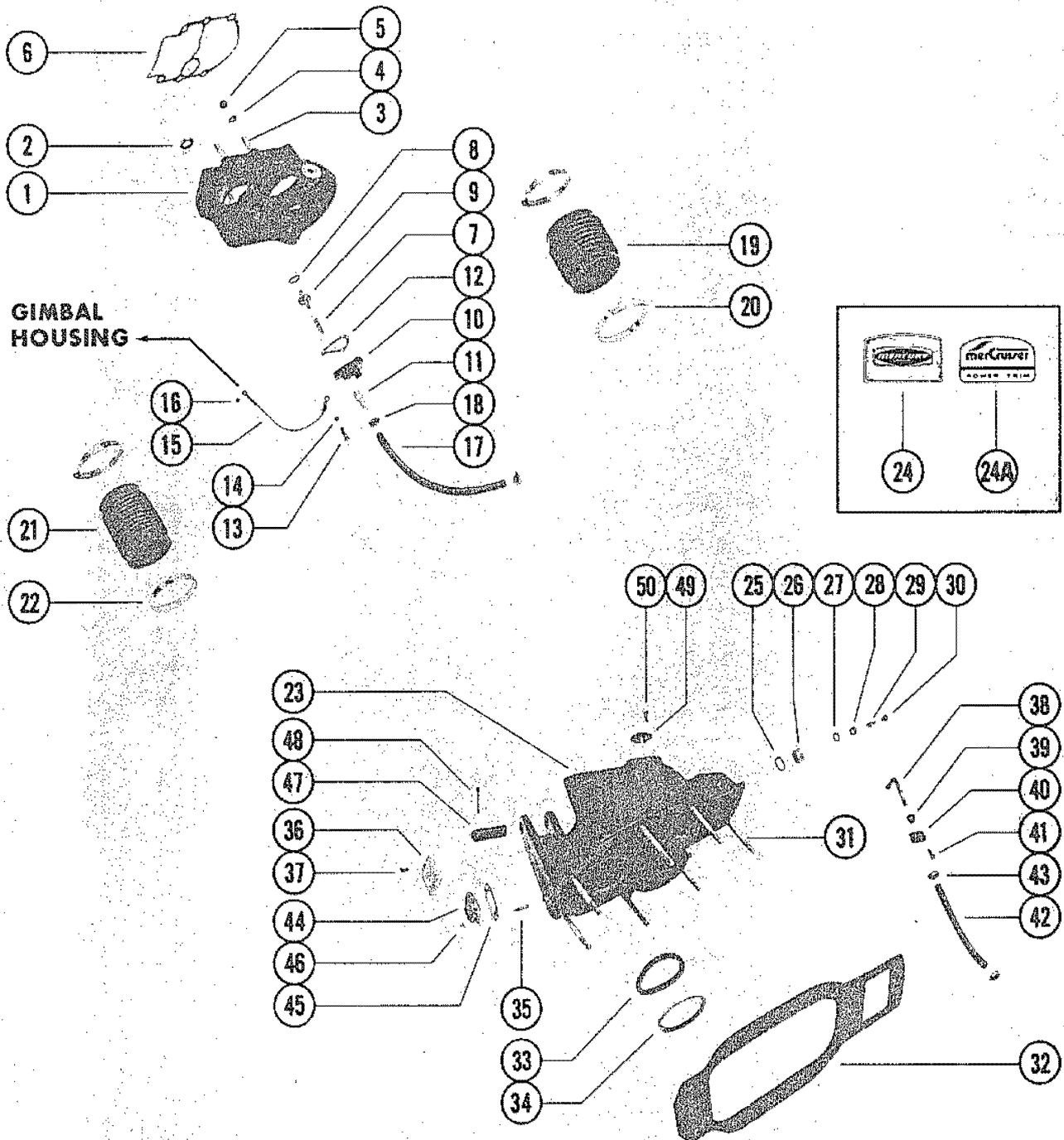
GIMBAL RING AND STEERING LEVER



GIMBAL RING AND STEERING LEVER

REF. NO.	PART NO.	SYM.	QTY.	DESCRIPTION
32	12-20086		1	WASHER, LINK ROD LINK ROD NOT DRILLED FOR COTTER PIN
33	11-20509		1	NUT, LINK ROD LINK ROD NOT DRILLED FOR COTTER PIN
34	10-54488		1	BOLT, LINK ROD TO STEERING LEVER LINK ROD NOT DRILLED FOR COTTER PIN
29	67538A1		1	LINK ROD ASSEMBLY, STEERING LINK ROD DRILLED FOR COTTER PIN.
30	18-45882		2	COTTER PIN, REATANING - STEERING LINK ROD LINK ROD DRILLED FOR COTTER PIN.
31	11-55438		1	NUT, LINK ROD BOLT LINK ROD DRILLED FOR COTTER PIN.
32	12-20086		1	WASHER, LINK ROD LINK ROD DRILLED FOR COTTER PIN.
33	11-55438		1	NUT, LINK ROD LINK ROD DRILLED FOR COTTER PIN.
34	10-66389		1	BOLT, LINK ROD TO STEERING LEVER LINK ROD DRILLED FOR COTTER PIN.
35	12-34966		1	WASHER, NYLON - LINK ROD BOLT
36	13-54667		1	WASHER, WAVE - LINK ROD BOLT
37	12-20086		1	WASHER, LINK ROD BOLT

GIMBAL HOUSING AND BELL HOUSING

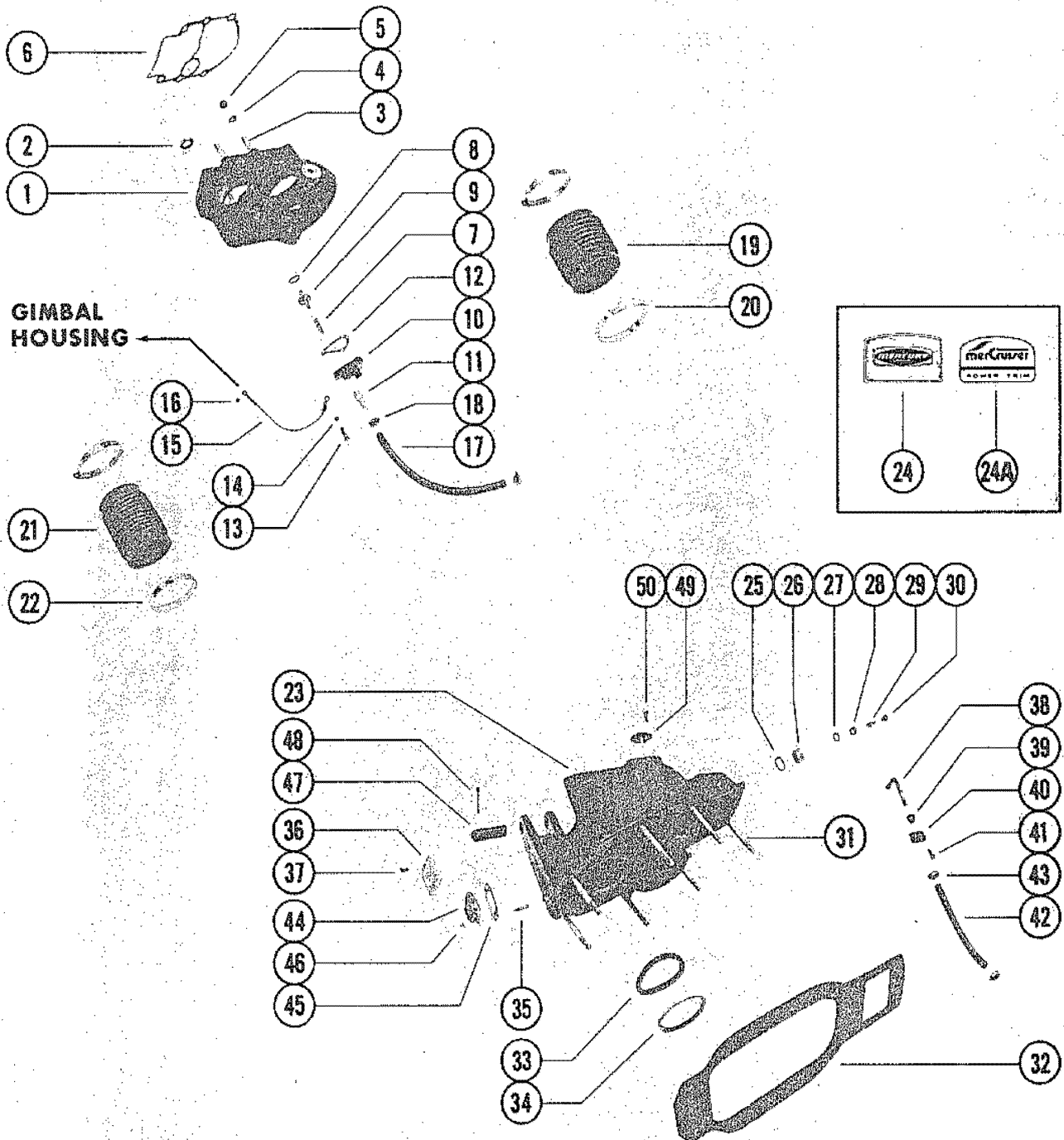


GIMBAL HOUSING AND BELL HOUSING

REF. NO.	PART NO.	SYM.	QTY.	DESCRIPTION
1	62814A1		1	BELL HOUSING ASSEMBLY
2	26-48443		1	OIL SEAL, BELL HOUSING
3	16-54011		6	STUD, BELL HOUSING TO DRIVE SHAFT HOUSING 93 1/4")
4	12-54012		6	WASHER, BELL HOUSING STUD
5	11-35000		6	NUT, BELL HOUSING STUD
6	27-54014		1	GASKET, BELL HOUSING TO DRIVE SHAFT HOUSING
7	24-48442		1	SPRING, TENSION - OIL RELEASE CHECK VALVE
8	25-48452		1	QUAD RING, OIL RELEASE CHECK VALVE
9	20-48219		1	CHECK VALVE, OIL RELEASE
10	54170A1		1	COVER ASSEMBLY, CHECK VALVVE GUIDE
11	22-34982		1	CONNECTOR, CHECK VALVE GUIDE COVER
12	27-54021		1	GASKET, CHECK VALVE GUIDE COVER
13	10-36137		3	SCREW, CHECK VALVE GUIDE COVER TO BELL HOUSING (1")
14	13-26992		3	LOCKWASHER, CHECK VALVE GUIDE COVER SCREW
15	57292		1	JUMPER CABLE, GIMBAL HOUSING TO CHECK VALVE GUIDE COVER
16	10-47225		1	SCREW, JUMPER CABLE
17	32-34423A1		1	HOSE, OIL - BELL HOUSING TO GIMBAL HOUSING (12 5/8")
18	54-54428		2	CLAMP, HOSE TO BELL HOUSING AND GIMBAL HOUSING
19	60932A1		1	BELLOWS ASSEMBLY, UNIVERSAL JOINT
20	54-31765		2	CLAMP, BELLOWS TO GIMBAL HOUSING AND BELL HOUSING
21	54406		1	BELLOWS, EXHUAST
22	54-38889		2	CLAMP, EXHAUST BELLOWS ATTACHING
23	62720A4		1	GIMBAL HOUSING ASSEMBLY
24	63720		1	EMBLEM, GIMBAL HOUSING SEE PHOTO FOR CORRECT REPLACEMENT
	37-76733		1	DECAL, GIMBAL HOUSING SEE PHOTO FOR CORRECT REPLACEMENT
25	26-31783		1	OIL SEAL, LOWER GIMBAL HOUSING ROLLER BEARING
26	31-54043		1	BEARING, ROLLER - GIMBAL HOUSING (LOWER)
27	26-54925		1	OIL SEAL, UPPER GIMBAL HOUSING ROLLER BEARING
28	31-21145		1	BEARING,ROLLER - GIMBAL HOUSING (UPPER)
29	22-23612		1	FITTING, GREASE - GIMBAL HOUSING
30	29359		1	LUBRICAP,GIMBAL HOUSING GREASE FITTING
31	16-57988		8	STUD,GIMBAL HOUSING TO TRANSOM PLATE (5 3/8")
32	27-54395		1	GASKET, GIMBAL HOUSING TO TRANSOM
33	25-54521		1	"O" RING, GIMBAL HOUSING
34	54068		1	PILOT RING, GIMBAL HOUSING
35	16-56766		2	STUD, GIMBAL HOUSING TO HYDRAULIC CONNECTOR (1 3/8")
36	34762A1		1	PLATE ASSEMBLY, INHIBITOR - GIMBAL HOUSING
37	10-34763		2	SCREW, INHIBITOR PLATE TO GIMBAL HOUSING (3/4")
38	32-54392		1	TUBE, OIL - GIMBAL HOUSING
39	23-54421		1	BUSHING, SEALING - OIL TUBE

CONTINUED ON NEXT PAGE ➡

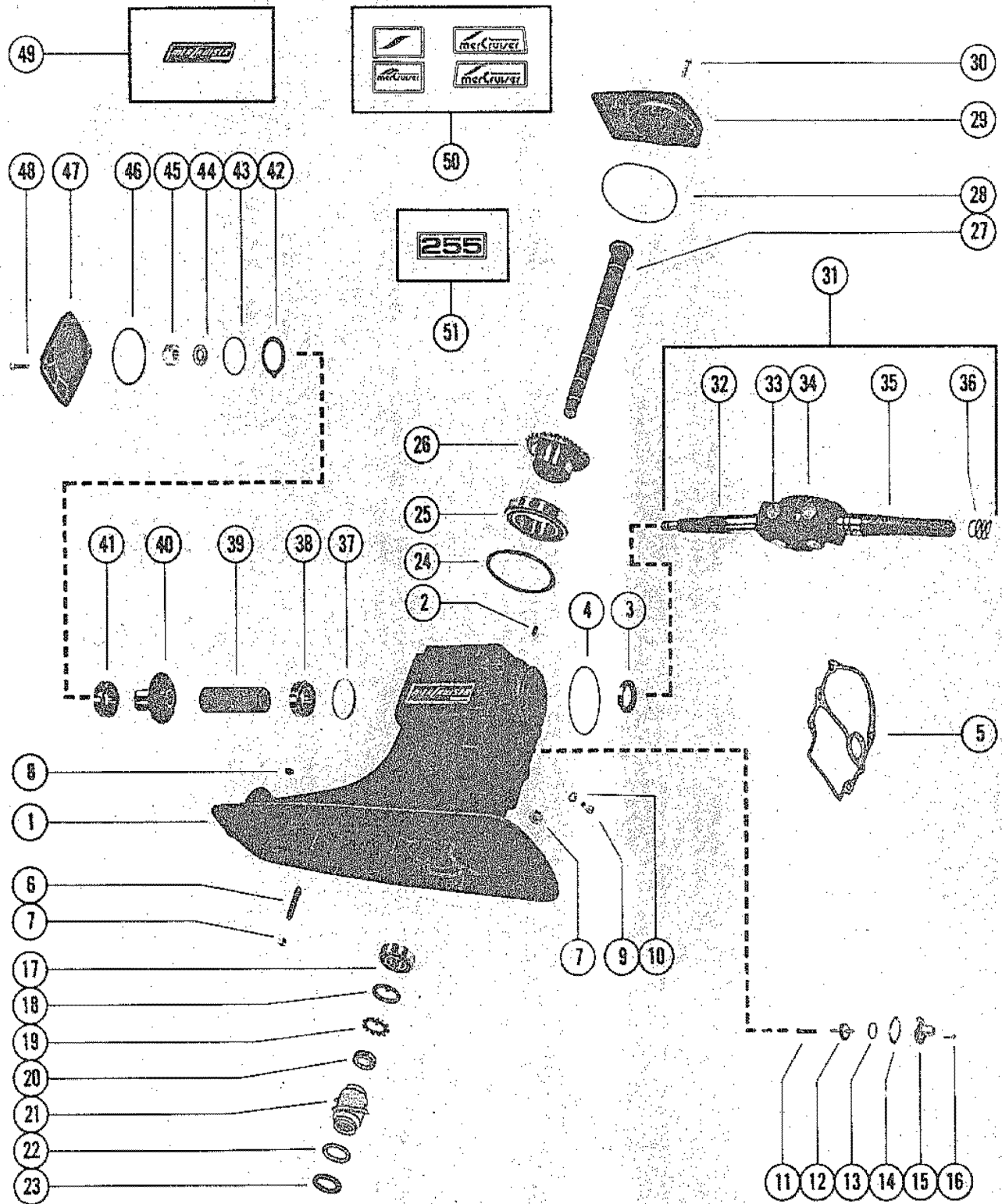
GIMBAL HOUSING AND BELL HOUSING



GIMBAL HOUSING AND BELL HOUSING

REF. NO.	PART NO.	SYM.	QTY.	DESCRIPTION
40	54422		1	COVER, SEALING BUSHING RETAINING
41	10-28636		2	SCREW, COVER TO GIMBAL HOUSING (3/4")
42	32-34423A1		1	HOSE, OIL - GIMBAL HOUSING TO TRANSOM PLATE (7 3/4")
43	54-54428		2	CLAMP, OIL HOSE TO GIMBAL HOUSING AND TRANSOM PLATE
44	47347		1	CONNECTOR, HYDRAULIC - GIMBAL HOUSING
45	27-47644		1	GASKET, HYDRALIC - GIMBAL HOUSING
46	11-35888		2	NUT, HYDRAULIC CONNECTOR STUD
47	17-54052		1	PIN, SWIVEL - GIMBAL HOUSING TO GIMBAL RING (LOWER)
48	18-54929		1	COTTER PIN, RETAINING - LOWER SWIVEL PIN
49	57322		1	COVER, RETAINING - GIMBAL HOUSING
50	10-28635		2	SCREW, RETAININGF COVER TO GIMBAL HOUSING (5/8")

DRIVE SHAFT HOUSING ASSEMBLY AND GEAR ASSEMBLY

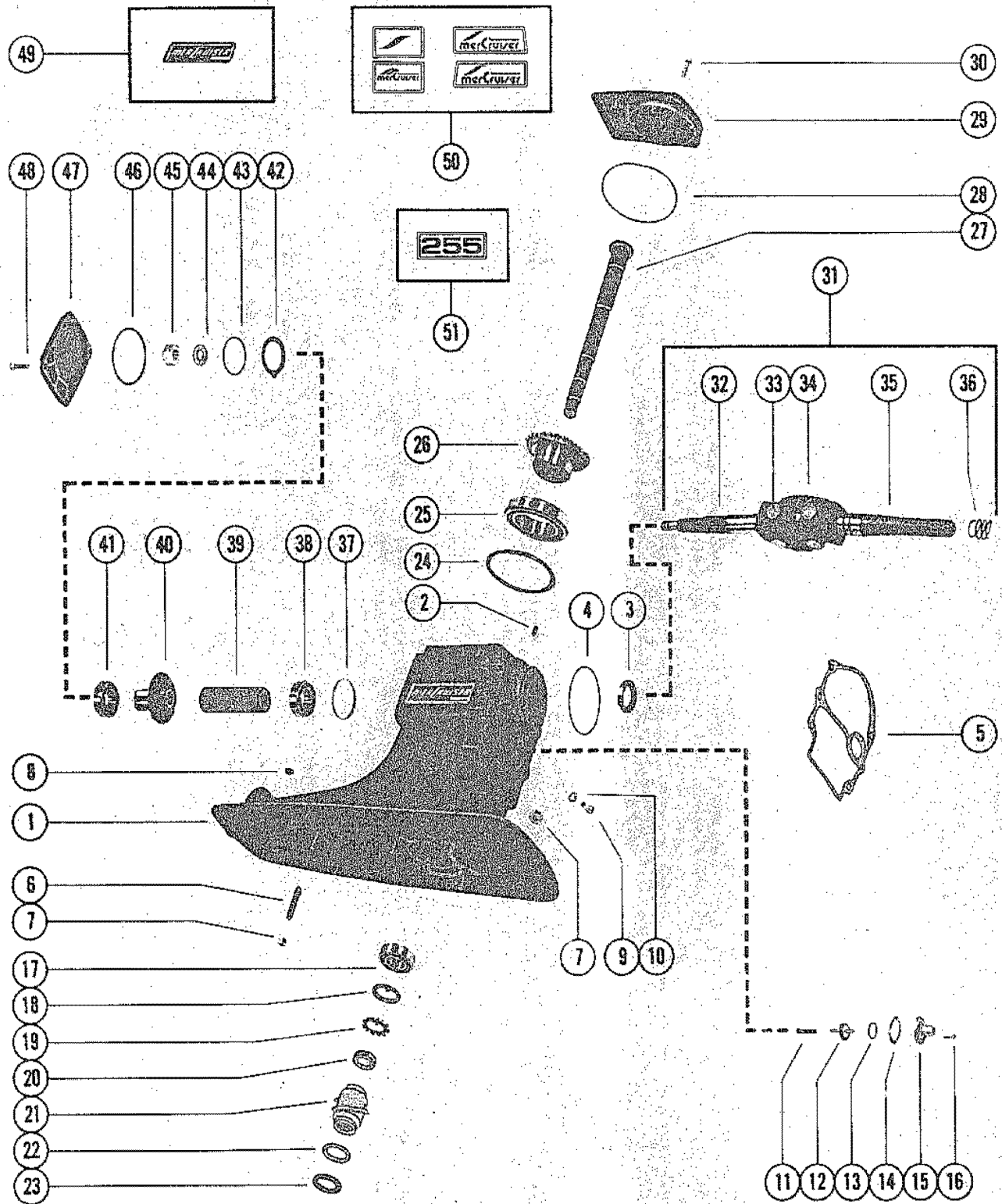


DRIVE SHAFT HOUSING ASSEMBLY AND GEAR ASSEMBLY

REF. NO.	PART NO.	SYM.	QTY.	DESCRIPTION
1	1571-4847A5		1	DRIVE SHAFT HOUSING ASSEMBLY
2	10-21934		1	SCREW, SET - DRIVE SHAFT HOUSING
3	26-62818		1	OIL SEAL, DRIVE SHAFT HOUSING
4	25-62817		1	"O" RING, DRIVE SHAFT HOUSING
5	27-54014		1	GASKET, DRIVE SHAFT HOUSING TO BELL HOUSING
6	16-54674		6	STUD, DRIVE SHAFT HOUSING TO GEAR HOUSING (2 1/4")
7	11-34933		6	NUT, DRIVE SHAFT HOUSING STUD
8	19-47579		1	PLUG, TRIM TAB HOLE - DRIVE SHAFT HOUSING
9	10-28634		1	SCREW, VENT - DRIVE SHAFT HOUSING
10	12-20260		1	WASHER, SEALING - VENT SCREW
11	24-48442		1	SPRING, TENSION - OIL RELEASE CHECK VALVE
12	20-48219		1	CHECK VALVE, OIL RELEASE
13	25-48452		1	QUAD RING, OIL RELEASE CHECK VALVE
14	27-66925		1	GASKET, CHECK VALVE GUIDE
15	54168		1	GUIDE, CHECK VALVE
16	10-22523		3	SCREW, CHECK VALVE GUIDE TO HOUSING (3/4")
17	31-38356A1		1	TAPERED ROLLER BEARING ASSEMBLY, DRIVE AHSFT
18	12-62795		1	TAB WASHER, DRIVE SHAFT
19	13-62788		1	LOCKWASHER, DRIVE SHAFT
20	11-62794		1	NUT, DRIVE SHAFT
21	62787A1		1	COUPLING ASSEMBLY, OIL SLINGER
22	15-39899A1		AR	SHIM ASSEMBLY, ROLLER BEARING TO COUPLING (.002-3-5-10)
23	12-62797		1	WASHER, ROLLER BEARING TO COUPLING
24	15-32061A1		AR	SHIM ASSEMBLY, TAPERED ROLLER BEARING (.002-3-5-10-25)
25	31-62799A1		1	TAPERED ROLLER BEARING ASSEMBLY, DRIVE GEAR
26	43-62879		1	GEAR, DRIVEN - DRIVE SHAFT
27	45-62793		1	DRIVE SHAFT
28	25-67202		1	"O" RING, TOP COVER
29	62911		1	COVER, TOP
30	10-35047		4	SCREW, COVER TO DRIVE SHAFT HOUSING (1 1/4")
31	62782A1		1	UNIVERSAL JOINT ASSEMBLY, PINION GEAR SERIAL 00000000-04459594
	62782A2		1	UNIVERSAL JOINT ASSEMBLY, PINION GEAR SERIAL 04459595-09999999
32	62782		1	YOKE, UNIVERSAL JOINT (GEAR END)
33	58749		2	CROSS AND BEARING ASSEMBLY SERIAL 00000000-04459594
	75832		2	CROSS AND BEARING ASSEMBLY SERIAL 04459595-09999999
34	39383		1	SOCKET, CENTEWR - UNIVERSAL JOINT
35	62784		1	YOKE, UNIVERSAL JOINT (COUPLING END)
36	24-62727		1	SPRING, COMPRESSION - UNIVERSAL JOINT (COUPLING END)

CONTINUED ON NEXT PAGE ➡

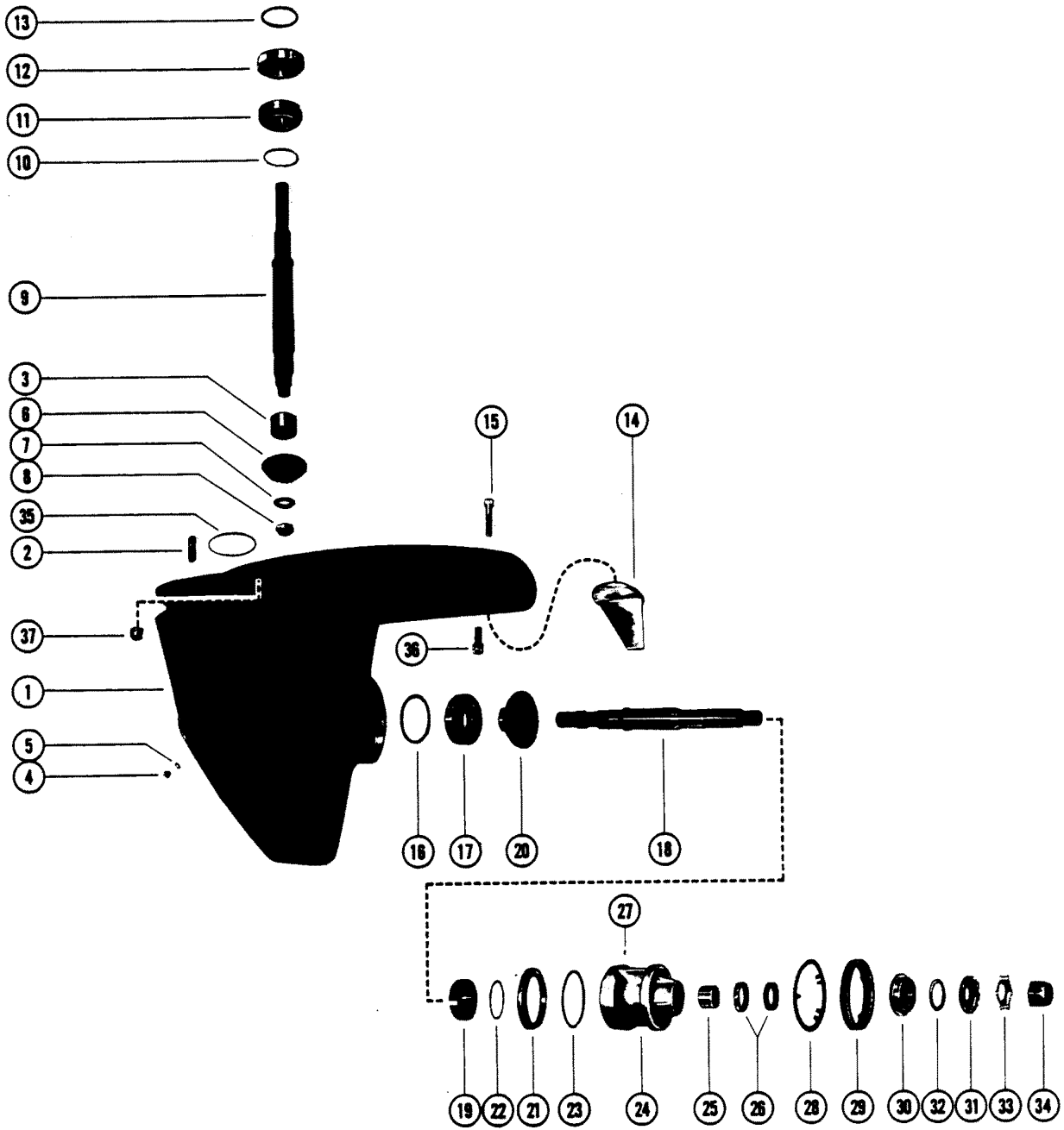
DRIVE SHAFT HOUSING ASSEMBLY AND GEAR ASSEMBLY



DRIVE SHAFT HOUSING ASSEMBLY AND GEAR ASSEMBLY

REF. NO.	PART NO.	SYM.	QTY.	DESCRIPTION
37	15-62833A1		AR	SHIM ASS'Y, ROLLER BEARING TO HOUSING (.002-3-5-10-20)
38	31-38356A1		1	TAPERED ROLLER BEARING ASSEMBLY, UNIVERSAL JOINT
39	23-62789		1	SPACER, TAPERED ROLLER BEARING
40	43-62878		1	GEAR, DRIVE
41	31-54038A1		1	TAPERED ROLLER BEARING ASSEMBLY, PINION GEAR
42	12-62786		1	TAP WASHER, TAPERED ROLLER BEARING
43	15-55499A1		AR	SHIM ASS'Y, TAPERED ROLLER BEARING TO REAR COVER (.002-3-5-10-20)
44	12-48912		1	WASHER, PINION GEAR TO UNIVERSAL JOINT
45	11-34862		1	NUT, PINION GEAR TO UNIVERSAL JOINT
46	25-39695		1	"O" RING, REAR COVER
47	62785		1	COVER, REAR
48	10-35047		4	SCREW, REAR COVER TO DRIVE SHAFT HOUSING (1 1/4")
49	37-63401A1		1	DECAL ASSEMBLY, DRIVE SHAFT HOUSING SERIAL 00000000-04644609
50	37-76758A1		1	DECAL ASSEMBLY, DRIVE SHAFT HOUSING SERIAL 04644610-09999999
51	37-76761		1	DECAL, "255" SERIAL 04644610-09999999

GEAR HOUSING ASSEMBLY, COMPLETE



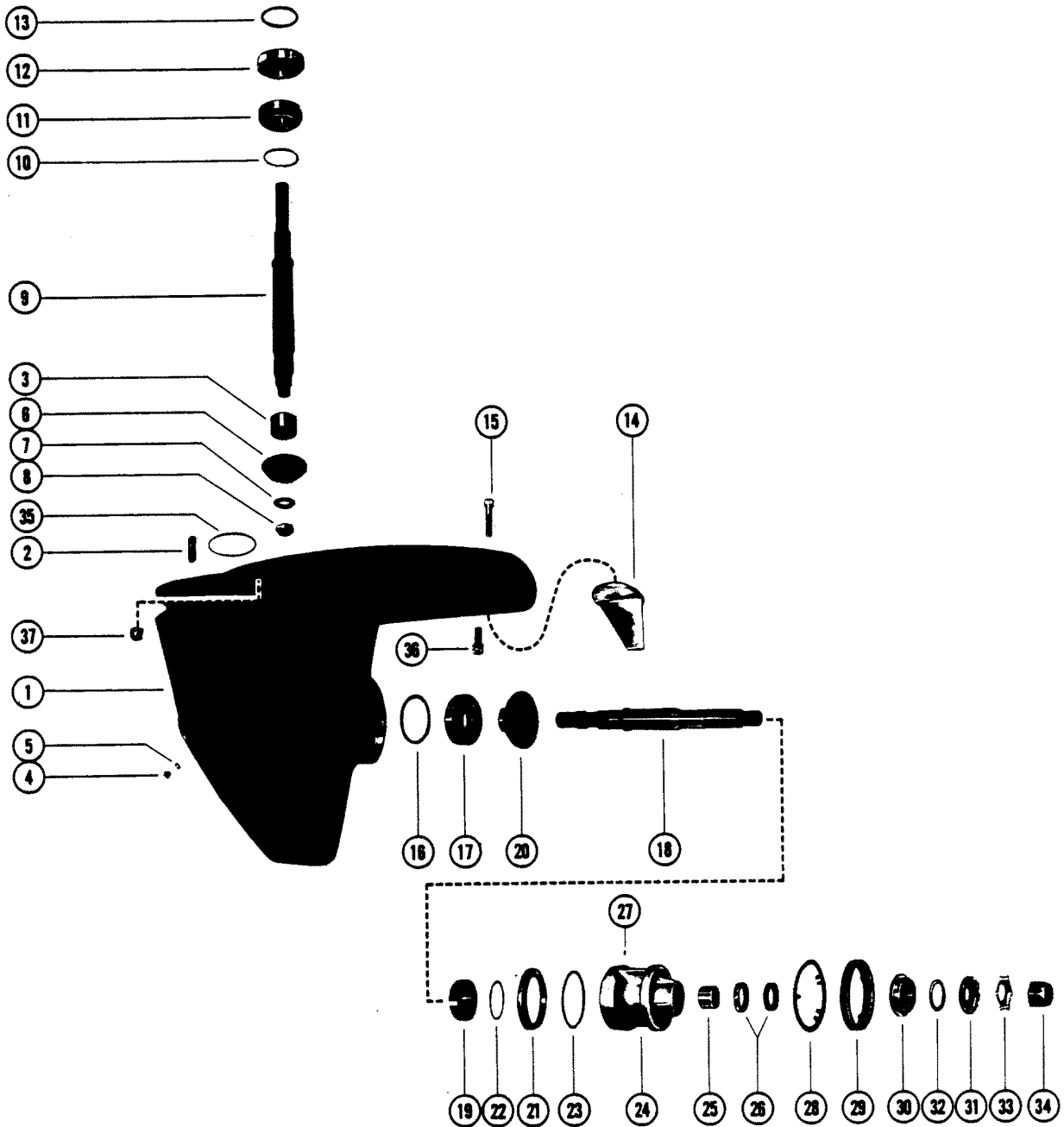
1402

GEAR HOUSING ASSEMBLY, COMPLETE

REF. NO.	PART NO.	SYM.	QTY.	DESCRIPTION
-	1641-4855A4		1	GEAR HOUSING ASSEMBLY, COMPLETE(LEFT HAND ROTATION) SERIAL 00000000-03786859
-	1641-4855A5		1	GEAR HOUSING ASSEMBLY, COMPLETE(RIGHT HAND ROTATION) SERIAL 00000000-03786859
-	1641-4855A13		1	GEAR HOUSING ASSEMBLY, COMPLETE(LEFT HAND ROTATION) SERIAL 03786860-09999999
-	1641-4855A14		1	GEAR HOUSING ASSEMBLY, COMPLETE(RIGHT HAND ROTATION) SERIAL 03786860-09999999
1	1641-4855A6		1	GEAR HOUSING ASSEMBLY
2	16-57982		1	STUD, GEAR HOUSING TO DRIVE SHAFT HOUSING (1 7/8")
3	31-35246		1	ROLLER BEARING, DRIVE SHAFT
4	10-28634		1	SCREW, VENT - GEAR HOUSING
5	12-20260		1	WASHER, SEAL - VENT SCREW
6	43-62880		1	GEAR, PINION
7	12-54048		1	WASHER, PINION GEAR TO DRIVE SHAFT
8	11-55819		1	NUT, PINION GEAR TO DRIVE SHAFT
9	45-62783		1	DRIVE SHAFT
10	15-26320A1		AR	SHIM ASS'Y, ROLLER BEARING TO GEAR HOUSING (.002-3-5-10-20)
11	31-48941A1		1	TAPERED ROLLER BEARING ASSEMBLY, DRIVE SHAFT
12	31-35990A1		1	TAPERED ROLLER BEARING ASSEMBLY, DRIVE SHAFT
13	25-54030		1	"O" RING, GEAR HOUSING TO DRIVE SHAFT HOUSING
14	31640A1		1	TRIM TAB ASSEMBLY, GEAR HOUSING
15	10-49354		1	SCREW, TRIM TAB TO GEAR HOUSING (2 1/2")
16	15-55499A1		AR	SHIM ASS'Y, ROLLER BEARING TO GEAR HSG. (.002-3-5-10-20) LEFT HAND ROTATION
17	31-54038A1		1	TAPERED ROLLER BEARING ASSEMBLY, PROPELLER GEAR LEFT HAND ROTATION
18	44-62820		1	PROPELLER SHAFT LEFT HAND ROTATION
19	31-54036A1		1	TAPERED ROLLER BEARING ASSEMBLY LEFT HAND ROTATION
16	15-47397A1		AR	SHIM ASS'Y, ROLLER BEARING TO GEAR HSG. (.002-3-5-10) RIGHT HAND ROTATION
17	31-62801A1		1	TAPERED ROLLER BEARING ASSEMBLY, PROPELLER GEAR RIGHT HAND ROTATION
18	44-62792		1	PROPELLER SHAFT RIGHT HAND ROTATION
19	31-62799A1		1	TAPERED ROLLER BEARING ASSEMBLY RIGHT HAND ROTATION
20	43-62881		1	GEAR, DRIVE
21	62816		1	RING, THRUST - BEARING CARRIER SERIAL 00000000-03786859
22	15-54005A1		AR	SHIM ASSEMBLY, ROLLER BEARING SERIAL 00000000-03786859
21	66103A1		1	THRUST RING ASSEMBLY SERIAL 03786860-09999999
22	23-66093		1	RING, LOAD - THRUST RING SERIAL 03786860-09999999

CONTINUED ON NEXT PAGE ➡

GEAR HOUSING ASSEMBLY, COMPLETE

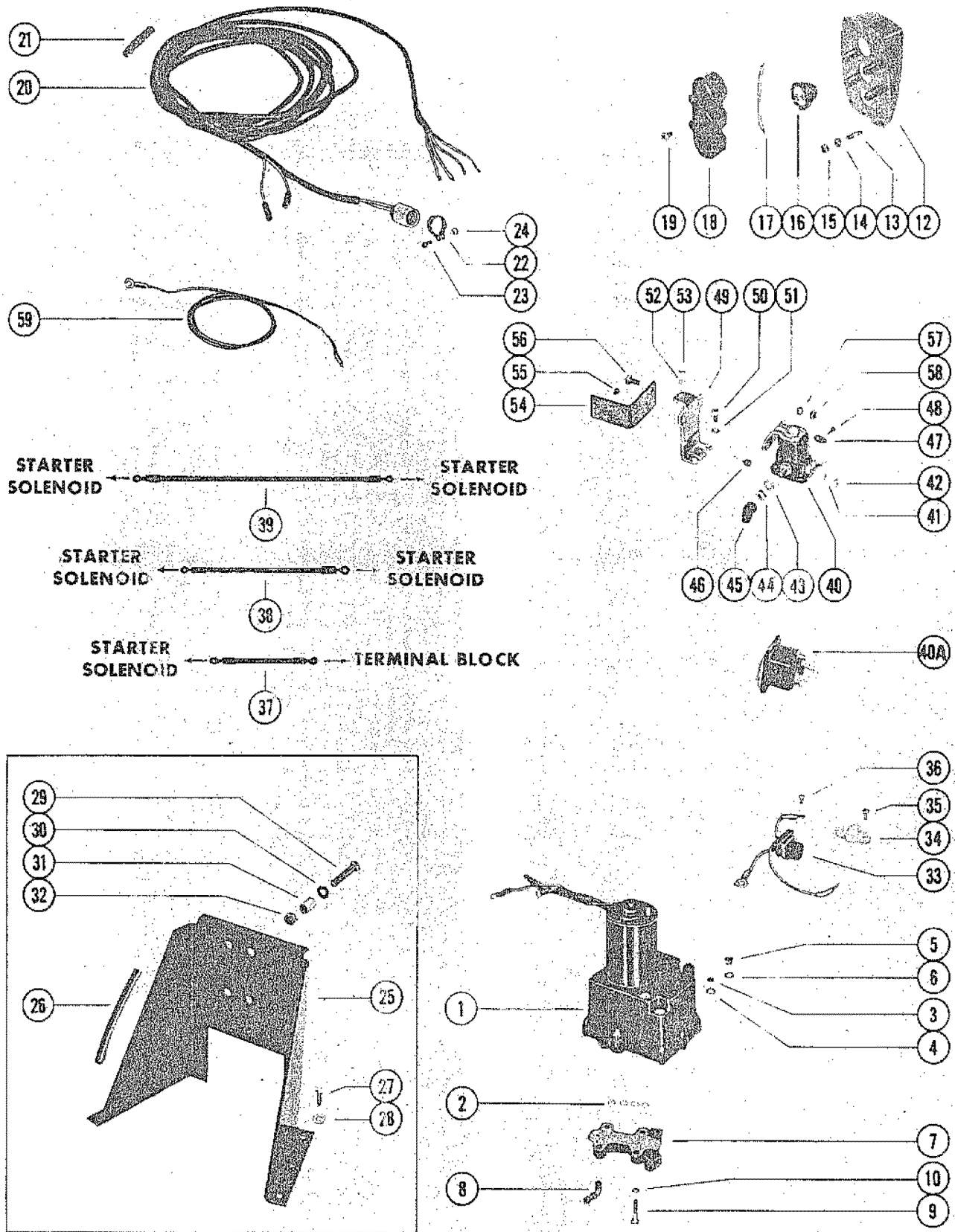


1402

GEAR HOUSING ASSEMBLY, COMPLETE

REF. NO.	PART NO.	SYM.	QTY.	DESCRIPTION
23	25-34821		1	"O" RING, BEARING CARRIER TOM THRUST RING
24	62813A1		1	BEARING CARRIER ASSEMBLY
25	31-54042		1	BEARING, ROLLER - BEARING CARRIER
26	26-54926		1	OIL SEAL, BEARING CARRIER
27	28-30281		1	KEY, LOCATING - BEARING CARRIER
28	14-54167		1	TAB WASHER, GEAR HOUSING COVER
29	54163		1	COVER, GEAR HOUSING
30	55074		1	THRUST HUB AND WASHER ASSEMBLY
31	12-55073A1		1	WASHER ASSEMBLY, SPLINED - PROPELLER SHAFT
32	12-55072		1	WASHER, THRUST - BEARING CARRIER
33	14-34817		1	TAB WASHER, PROPELLER NUT
34	11-54034		1	NUT,PROPELLER (1 1/4-7 THREAD)
35	25-54029		1	"O" RING, GEAR HOUSING TO DRIVE SHAFT HOUSING
36	10-47557		1	SCREW, GEAR HOUSING TO DRIVE SHAFT HOUSING (1 1/2")
37	11-34933		1	NUT, DRIVE SHAFT HOUSING TO GEAR HOUSING STUD

HYDRAULIC PUMP AND TRIM CONTROL PANEL

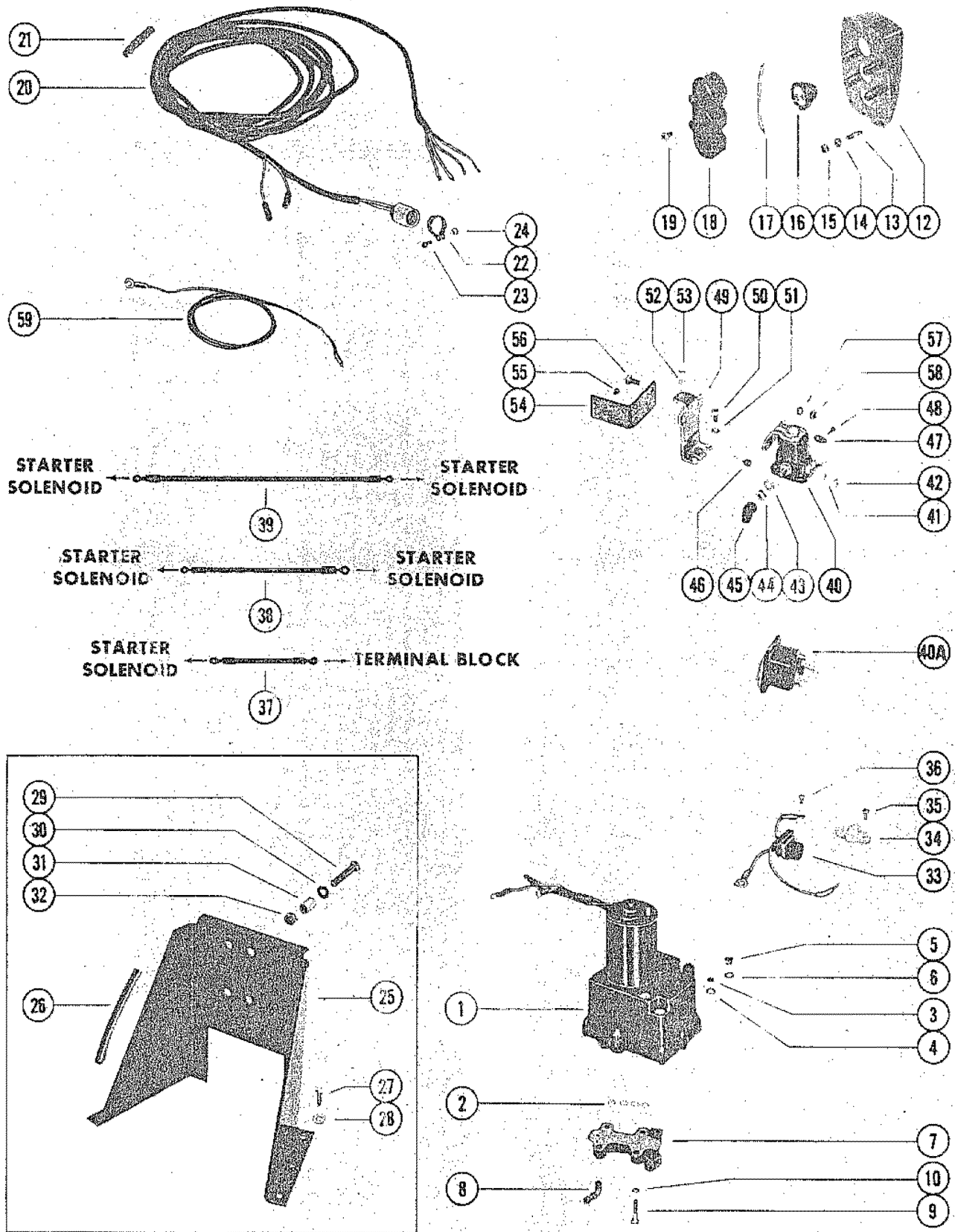


HYDRAULIC PUMP AND TRIM CONTROL PANEL

REF. NO.	PART NO.	SYM.	QTY.	DESCRIPTION
1	74436A9		0	HYDRAULIC PUMP ASSEMBLY(SEE G14 FOR BREAKDOWN)
2	25-21720		4	"O" RING, HYDRAULIC PUMP TO CONTROL VALVE
3	10-46918		1	SCREW, VENT - HYDRAULIC PUMP
4	13-46917		1	LOCKWASHER, SEALING - VENT SCREW
5	10-28634		1	SCREW, FILLER - HYDRAULIC PUMP
6	12-20260		1	WASHER, SEALING - HYDRUALIC PUMP FILLER SCREW
7	48077A4		1	CONTROL VALVE ASSEMBLY SERIAL 00000000-03786859
	66074A3		1	COMTROL VALVE ASSEMBLY(SERAIL SERIAL 03786860-04644609
	25-21720		4	"O" RING, HYDRAULIC PUMP TO CONTROL VALVE
8	22-52666		1	ELBOW, CONTROL VALVE
9	10-21091		4	SCREW, CONTROL VALVE TO HYDRAULIC PUMP (1 1/8")
10	13-26992		4	LOCKWASHER, CONTROL VALVE SCREW
	55642A7		1	CONTROL PANEL ASSEMBLY, COMPLETE
12	5642A1		1	PANEL ASSEMBLY, CONTROL
13	16-55422		4	STUD, CONTROL PANEL TO BOAT (2")
14	12-24676		4	WASHER, CONTROL PANEL STUD
15	11-27164		4	NUT, CONTROL PANEL STUD
16	55738A1		3	SWITCH, PUSH BUTTON - CONTROL PANEL
17	48078		1	JUMPER WIRE, PUSH BUTTON SWITCH (RED - 3 1/4")
	53107		1	JUMPER WIRE, PUSH BUTTON SWITCH (PURPLE - 3")
18	55641		1	RETAINER, PUSH BUTTON SWITCH
19	10-62568		4	SCREW, SWITCH RETAINER TO CONTROL PANEL (1/2")
20	45341-20		1	HARNESS, CONTROL PANEL
21	33865		1	BINDER, NYLON - CONTROL PANEL HARNESS
22	54-46770		1	CLAMP, HARNESS ATTACHING
23	10-29227		1	SCREW, HARNESS ATTACHING CLAMP (1/2")
24	11-34388		1	NUT, HARNESSA ATTACHING CLAMP SCREW
25	58397A3		1	BRACKET ASSEMBLY, MOUNTING - HYDRAULIC PUMP (FLOOR MOUNTING)
26	58491		2	BUMPER, RUBBER - PUMP MOUNTING BRACKET
27	10-59784		6	SCREW, PUMP MOUNTING ATTCHING (1")
28	12-29245		6	WASHER, PUMP MOUNTING BRACKET SCREW
29	10-24234		4	SCREW, HYDRAULIC PUMP TO MOUNTING BRACKET (1")
30	13-39107		4	LOCKWASHER, HYDRAULIC PUMP SCREW
31	23-36534		4	/SPACER, MOUNTING BRACKET
32	11-21908		4	NUT, HYDRAULIC PUMP SCREW
33	45325		1	CONNECTOR AND HARNESS SERIAL 00000000-04644609
	84-74023		1	CONNECTOR AND HARNESS SERIAL 04644610-09999999
34	45559		1	TERMINAL BLOCK, HYDRAULIC PUMP SERIAL 00000000-04644609
35	10-35519		2	SCREW, TERMINAL BLOCK TO HYDRAULIC PUMP (1/2") SERIAL 00000000-04644609

CONTINUED ON NEXT PAGE ➡

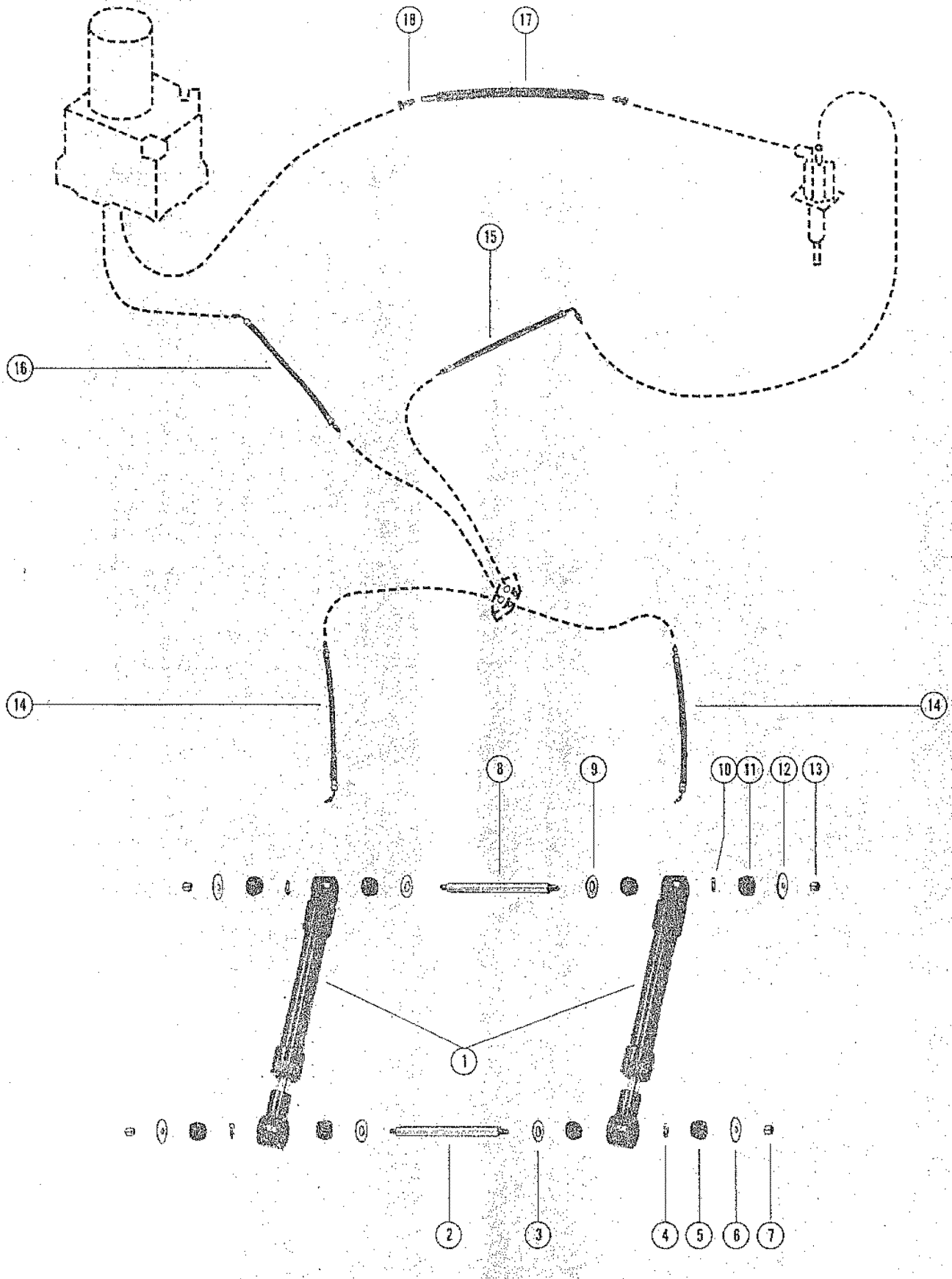
HYDRAULIC PUMP AND TRIM CONTROL PANEL



HYDRAULIC PUMP AND TRIM CONTROL PANEL

REF. NO.	PART NO.	SYM.	QTY.	DESCRIPTION
36	10-62568		2	SCREW, HARNESS LEADS TO TERMINAL BLOCK (3/8") SERIAL 00000000-04644609
37	55990		1	JUMPER WIRE, SOLENOID TO TERMINAL BLOCK (GREEN - 4") SERIAL 00000000-04644609
38	55991		1	JUMPER WIRE, SOLENOID TO SOLENOID (RED - 7")
39	55992		1	JUMPER WIRE, SOLENOID TO SOLENOID (BLACK - 11 1/2")
40	25561		2	STARTER SOLENOID(SERIAL#4644610 AND UP)
	89-68258		2	STARTER SOLENOID(SERIAL#4644609 AND BELOW)
41	13-26996		4	LOCKWASHER, STARTER SOLENOID TERMINAL (#10)
42	11-20645		4	NUT, STARTER SOLENOID TERMINAL (#10)
43	26993		4	LOCKWASHER, STARTER SOLENOID TERMINAL (5/16")
44	11-20083		4	NUT, STARTER SOLENOID TERMINAL (5/16"-24) SERIAL 00000000-04644609
	11-68292		4	NUT, STARTER SOLENOID TERMINAL (5/16:-18) SERIAL 04644610-09999999
45	46265		3	BOOT, RUBBER - STARTER SOLENOID TERMINAL
46	49342		2	BUMPER, STARTER SOLENOID TO MOUNTING BRACKET
47	25661		1	BRACKET, STARTER SOLENOID TERMINAL (5/16")
48	10-62568		1	SCREW, HYDRAULIC PUMP LEAD TO BRACKET (3/8")
49	45321		1	BRACKET, MOUNTING - STARTER SOLENOID
50	10-21140		2	SCREW, MOUNTING BRACKET TO HYDRAULIC PUMP (1/2")
51	13-26992		2	LOCKWASHER, MOUNTING BRACKET SCREW
52	13-27660		1	LOCKWASHER, HYDRAULIC PUMP THRU BOLT
53	11-20645		1	NUT, MOUNTING BRACKET TO HYDRAULIC PUMP THRU BOLT
54	55926		1	BRACKET, STARTER SOLENOID TO MOUNTING
55	26901		1	BUMPER, HYDRAULIC PUMP TO MOUNTING BRACKET
56	10-34290		2	SCREW, STARTER SOLENOID TO MOUNTING BRACKET (5/8")
	10-21625		2	SCREW, STARTER SOLENOID TO MOUNTING BRACKET (3/4")
57	13-26992		4	LOCKWASHER, STARTER SOLENOID SCREW
58	11-21825		4	NUT, STARTER SOLENOID SCREW
59	84-61109		1	BATTERY LEAD (NEGATIVE)
	84-61110		1	BATTERY LEAD (POSITIVE)

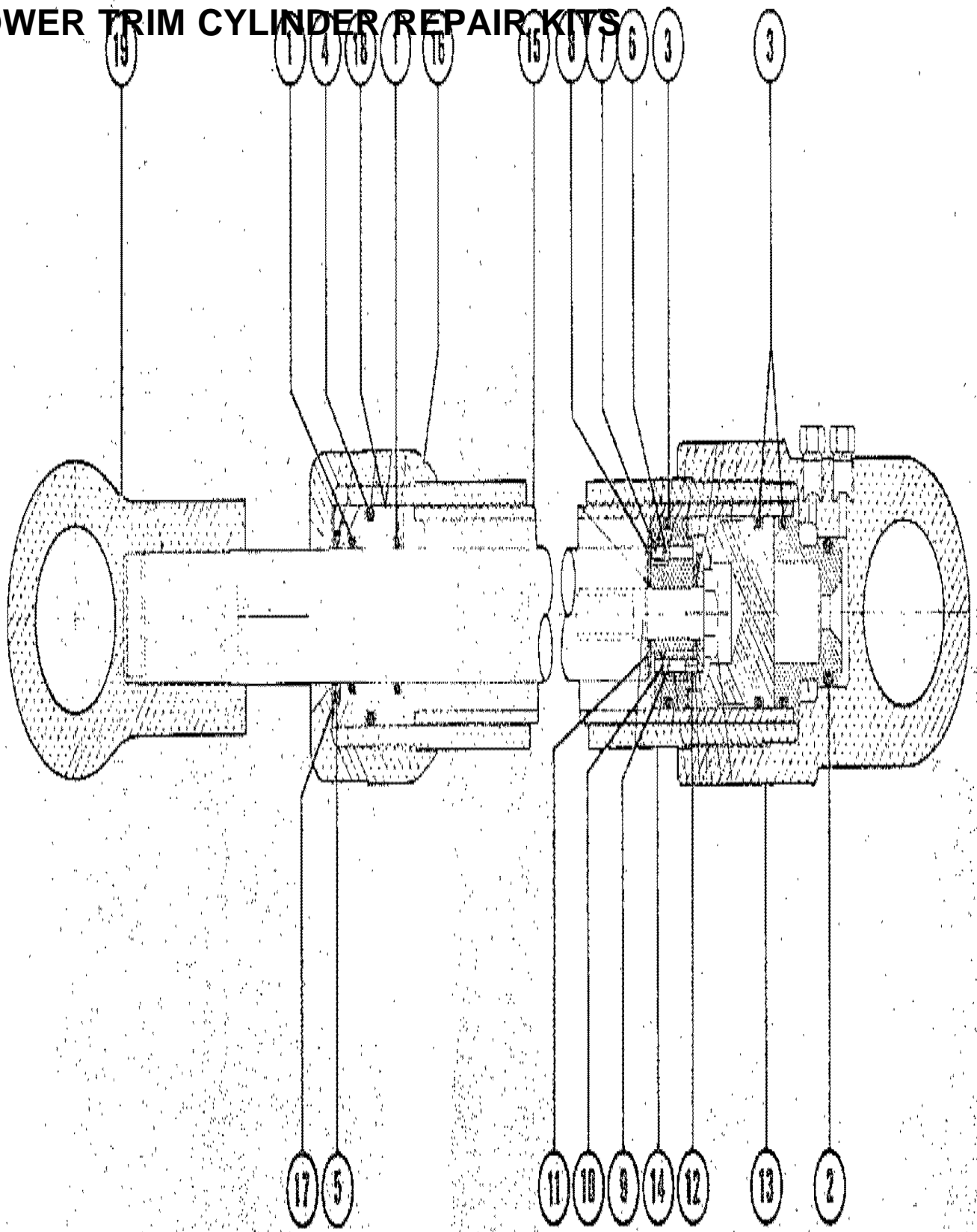
TRIM CYLINDERS AND HYDRAULIC HOSES



TRIM CYLINDERS AND HYDRAULIC HOSES

REF. NO.	PART NO.	SYM.	QTY.	DESCRIPTION
1	47342A12		2	TRIM CYLINDER ASSEMBLY, COMPLETE(SEE NOTE BELOW)
2	17-49279		1	PIN, ANCHOR - DRIVE SHAFT HOUSING (10 3/4")
3	12-47395		2	WASHER, DRIVE SHAFT HOUSING ANCHOR PIN (59/64"I.D.)
4	24-49593		2	SPRING, DRIVE SHAFT HOUSING ANCHOR PIN
5	23-61291		4	BUSHING, RUBBER - DRIVE HOUSING ANCHOR PIN
6	12-47394		2	WASHER, DRIVE SHAFT HOUSING ANCHOR PIN (33/64"I.D.)
7	11-35000		2	NUT, DRIVE SHAFT HOUSING ANCHOR PIN
8	17-47374		1	PIN, ANCHOR - GIMBAL RING (13 1/4")
9	12-47395		2	WASHER, GIMBAL RING ANCHOR PIN (59/64"I.D.)
10	24-49593		2	SPRING, GIMBAL RING ANCHOR PIN
11	23-61291		4	BUSHING, RUBBER - GIMBAL RING ANCHOR PIN
12	12-47394		2	WASHER, GIMBAL RING ANCHOR PIN (33/64"I.D.)
13	11-35000		2	NUT, GIMBAL RING ANCHOR PIN
14	32-68676		4	HOSE, HYDRAULIC - CONNECTOR TO TRIM CYLINDER (12 1/2")
15	32-63158A1		1	HOSE, HYDRAULIC - CONNECTOR TO VALVE (25")
16	32-63157A1		1	HOSE, HYDRAULIC - CONNECTOR TO PUMP (50 1/2")
17	32-58432A2		1	TUBING ASS'Y, HYDRAULIC PUMP TO REVERSE LOCK VALVE (49")
18	22-49718		2	NUT, COMPRESSION - HYDRAULIC TUBING ATTACHING

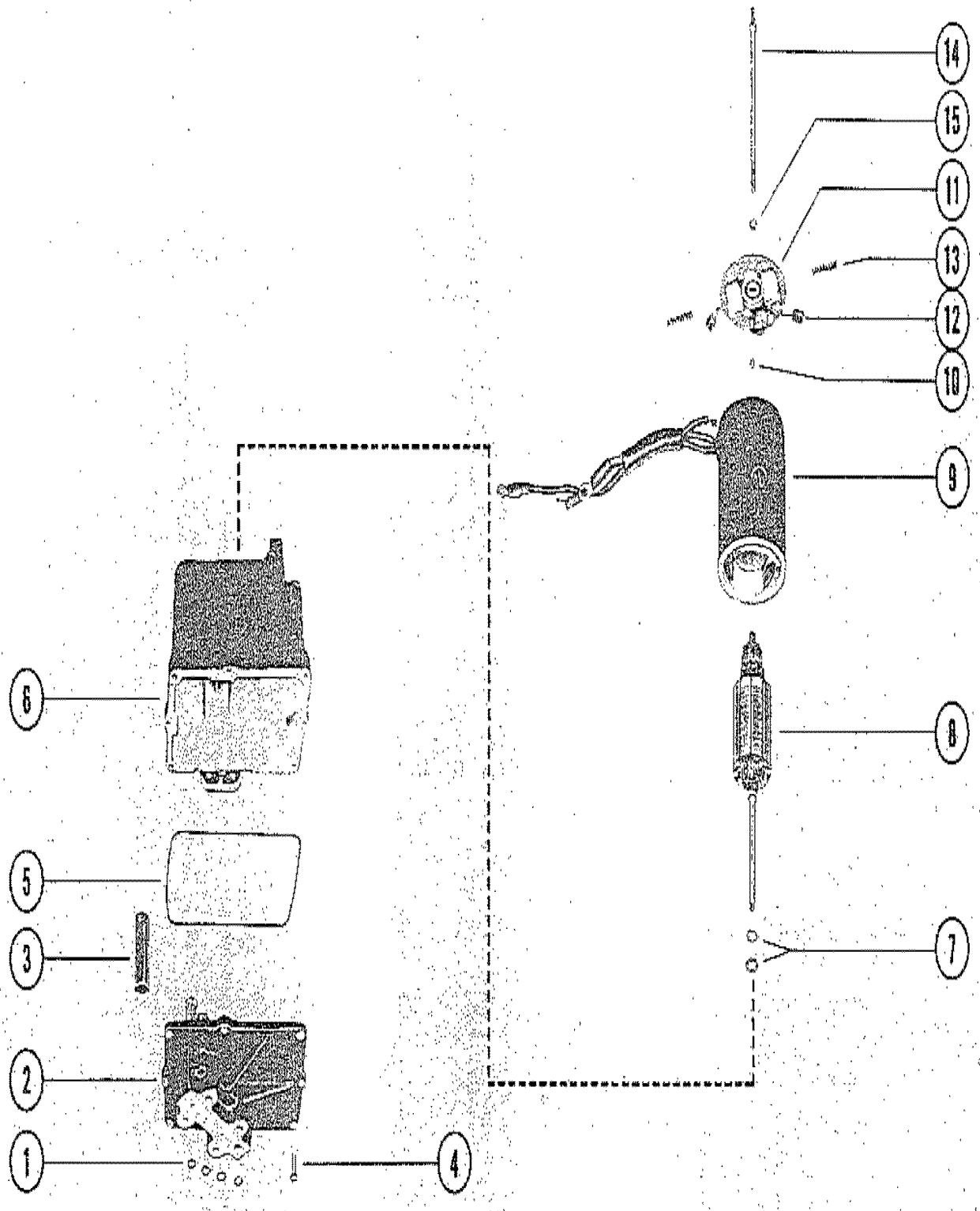
POWER TRIM CYLINDER REPAIR KITS



POWER TRIM CYLINDER REPAIR KITS

REF. NO.	PART NO.	SYM.	QTY.	DESCRIPTION
-	25-47389A1		1	"O" RING KIT
1	N.S.S.		2	"O" RING (1" X 1 3/16" X 3/32)
2	N.S.S.		1	"O" RING (7/8" X 1 1/8" X 1/8")
3	N.S.S.		3	"O" RING (1 1/4" X 1 7/16" X 3/32")
4	N.S.S.		1	"O" RING (1 3/8" X 1 5/8" X 1/8")
5	N.S.S.		1	ROD SCRAPER
-	47348A1		1	SHOCK PISTON ASSEMBLY
6	N.S.S.		6	BALL, STEEL
7	N.S.S.		1	RIVET, TUBULAR
8	N.S.S.		1	SPRING, COMPRESSION
9	N.S.S.		7	RIVET, TUBULAR
10	N.S.S.		1	PISTON, SHOCK
11	N.S.S.		1	WASHER, SEALING
12	N.S.S.		7	SPRING, COMPRESSION
-	47342A9		1	OUTER CYLINDER ASSEMBLY FOR CORRECT OUTER CYLINDER ASSEMBLY, CHECK LENGTH OF REF. #14
13	N.S.S.		1	END CAP, CYLINDER FOR CORRECT OUTER CYLINDER ASSEMBLY, CHECK LENGTH OF REF. #14
14	N.S.S.		1	TUBE, OUTER - 13 3/4" IN LENGTH FOR CORRECT OUTER CYLINDER ASSEMBLY, CHECK LENGTH OF REF. #14
-	47342A10		1	OUTER CYLINDER ASSEMBLY FOR CORRECT OUTER CYLINDER ASSEMBLY, CHECK LENGTH OF REF. #14
13	N.S.S.		1	END CAP, CYLINDER FOR CORRECT OUTER CYLINDER ASSEMBLY, CHECK LENGTH OF REF. #14
14	N.S.S.		1	TUBE, OUTER - 11 3/8" IN LENGTH FOR CORRECT OUTER CYLINDER ASSEMBLY, CHECK LENGTH OF REF. #14
15	32-47387A1		1	INNER CYLINDER TUBE ASSEMBLY (12 1/2" IN LENGTH) FOR CORRECT INNER CYLINDER TUBE ASSEMBLY, CHECK LENGTH OF TUBE.
	32-49275A1		1	INNER CYLINDER TUBE ASSEMBLY (10 1/8" IN LENGTH) FOR CORRECT INNER CYLINDER TUBE ASSEMBLY, CHECK LENGTH OF TUBE.
-	55825A1		1	END CAP ASSEMBLY
16	N.S.S.		1	END CAP
17	N.S.S.		1	WASHER, END CAP
-	25-57093A1		1	BUSHING KIT
18	55824		1	BEARING, PISTON ROD
19	47343		1	PIVOT END

HYDRAULIC PUMP ASSEMBLY, COMPLETE



HYDRAULIC PUMP ASSEMBLY, COMPLETE

REF. NO.	PART NO.	SYM.	QTY.	DESCRIPTION
-	74436A9		1	HYDRALIC PUMP ASSEMBLY, COMPLETE
1	25-21720		4	"O" RING, HYDRAULIC PUMP
2	392-2936		1	VALVE BODY AND GEAR ASSEMBLY
3	392-2618		1	CAM, VALVE BODY
4	10-20411		8	SCREW, VALVE ODY TO RESERVOIR (5/8")
5	392-2937		1	SEAL, RESERVOIR TO VALVE BODY AND GEAR
6	392-2939		1	RESERVOIR ASSEMBLY
7	392-2623		AR	WASHER, THRUST - ARMATURE
8	392-2943		1	ARMATURE, FIELD AND FRAME
9	392-2942		1	FIELD AND FRAME ASSEMBLY
10	392-2944		1	BALL, COMMUTATOR END PPLATE
11	392-2940		1	PLATE ASSEMBLY, COMMUTATOR END PLATE
12	392-2941		1	BRUSH SET, BRUSH TENSION
13	392-2529		1	SPRING SET, BRUSH TENSION
14	392-2938		1	BOLT SET, THRU - PALTE AND FRAME TO RESERVOIR
15	13-26996		2	LOCKWASHER, THRU BOLT

PARTS INDEX

Part Number	Description	Pg.	Ref. No.	Part Number	Description	Pg.	Ref. No.
25561	STARTER SOLENOID(54163	COVER, GEAR HOUSING . .	19	29
	SERIAL#4644610 AND UP)	23	40	54168	GUIDE, CHECK VALVE	13	15
25661	BRACKET, STARTER			54170A1	COVER ASSEMBLY, CHECK		
	SOLENOID TERMINAL				VALVVE GUIDE	9	10
	(5/16")	23	47	54234	COVER, EXHAUST	3	9
26901	BUMPER, HYDRAULIC PUMP			54244A1	COVER ASSEMBLY, OIL		
	TO MOUNTING BRACKET	23	55		RESERVIOR - TRANSOM		
26993	LOCKWASHER, STARTER				PLATE	3	3
	SOLENOID TERMINAL			54404	SHAFT, UPPER SWIVEL -		
	(5/16")	23	43		GIMBAL RING TO GIMBAL		
29359	LUBRICAP, GIMBAL RING				HOUSING	5	21
	GREASE FITTING	5	5	54406	BELLOWS, EXHUAST	9	21
29359	LUBRICAP,GIMBAL			54422	COVER, SEALING BUSHING		
	HOUSING GREASE				RETAINING	11	40
	FITTING	9	30	54666	LEVER, STEERING (USE		
31640A1	TRIM TAB ASSEMBLY, GEAR				WITH LINK ROD NOT		
	HOUSING	17	14		DRILLED FOR COTTER PI	5	25
33865	BINDER, NYLON - CONTROL			55074	THRUST HUB AND WASHER		
	PANEL HARNESS	21	21		ASSEMBLY	19	30
34762A1	PLATE ASSEMBLY,			55083	DIPSTICK, OIL LEVEL - OIL		
	INHIBITOR - GIMBAL				RESERVIOR	3	6
	HOUSING	9	36	55641	RETAINER, PUSH BUTTON		
35431A1	LINK ROD ASSEMBLY,				SWITCH	21	18
	STEERING	5	29	55642A7	CONTROL PANEL		
39383	SOCKET, CENTEWR -				ASSEMBLY, COMPLETE .	21	10
	UNIVERSAL JOINT	13	34	55738A1	SWITCH, PUSH BUTTON -		
45321	BRACKET, MOUNTING -				CONTROL PANEL	21	16
	STARTER SOLENOID . . .	23	49	55824	BEARING, PISTON ROD . . .	27	18
45325	CONNECTOR AND			55825A1	END CAP ASSEMBLY	27	--
	HARNESS	21	33	55897	SEAL, EXHAUST COVER . . .	3	10
45341-20	HARNESS, CONTROL			55926	BRACKET, STARTER		
	PANEL	21	20		SOLENOID TO MOUNTING	23	54
45559	TERMINAL BLOCK,			55990	JUMPER WIRE, SOLENOID		
	HYDRAULIC PUMP	21	34		TO TERMINAL BLOCK		
46265	BOOT, RUBBER - STARTER				(GREEN - 4")	23	37
	SOLENOID TERMINAL . . .	23	45	55991	JUMPER WIRE, SOLENOID		
47342A10	OUTER CYLINDER				TO SOLENOID (RED - 7")	23	38
	ASSEMBLY	27	--	55992	JUMPER WIRE, SOLENOID		
47342A12	TRIM CYLINDER ASSEMBLY,				TO SOLENOID (BLACK -		
	COMPLETE(SEE NOTE				11 1/2")	23	39
	BELOW)	25	1	5642A1	PANEL ASSEMBLY,		
47342A9	OUTER CYLINDER				CONTROL	21	12
	ASSEMBLY	27	--	57008	RETAINER, TRIM SENDER		
47343	PIVOT END	27	19		AND SWITCH SCREW . . .	5	19
47347	CONNECTOR, HYDRAULIC -			57292	JUMPER CABLE, GIMBAL		
	GIMBAL HOUSING	11	44		HOUSING TO CHECK		
47348A1	SHOCK PISTON ASSEMBLY				VALVE GUIDE COVER . . .	9	15
48077A4	CONTROL VALVE			57322	COVER, RETAINING -		
	ASSEMBLY	21	7		GIMBAL HOUSING	11	49
48078	JUMPER WIRE, PUSH			58397A3	BRACKET ASSEMBLY,		
	BUTTON SWITCH (RED - 3				MOUNTING - HYDRAULIC		
	1/4")	21	17		PUMP (FLOOR		
49342	BUMBER, STARTER				MOUNTING)	21	25
	SOLENOID TO MOUNTING			58491	BUMPER, RUBBER - PUMP		
	BRACKET	23	46		MOUNTING BRACKET . . .	21	26
53107	JUMPER WIRE, PUSH			58749	CROSS AND BEARING		
	BUTTON SWITCH				ASSEMBLY	13	33
	(PURPLE - 3")	21	17	60932A1	BELLOWS ASSEMBLY,		
54068	PILOT RING, GIMBAL				UNIVERSAL JOINT	9	19
	HOUSING	9	34				

PARTS INDEX

Part Number	Description	Pg.	Ref. No.	Part Number	Description	Pg.	Ref. No.
62782	YOKE, UNIVERSAL JOINT (GEAR END)	13	32	N.S.S.	TUBE, OUTER - 11 3/8" IN LENGTH	27	14
62782A1	UNIVERSAL JOINT ASSEMBLY, PINION GEAR	13	31	N.S.S.	TUBE, OUTER - 13 3/4" IN LENGTH	27	14
62782A2	UNIVERSAL JOINT ASSEMBLY, PINION GEAR	13	31	N.S.S.	WASHER, END CAP	27	17
62784	YOKE, UNIVERSAL JOINT (COUPLING END)	13	35	10-20411	WASHER, SEALING	27	11
62785	COVER, REAR	15	47	10-20639	SCREW, VALVE ODY TO RESERVOIR (5/8")	29	4
62787A1	COUPLING ASSEMBLY, OIL SLINGER	13	21	10-21091	SCREW, EXHAUST COVER TO TRANSOM PLATE (1 1/8")	3	11
62813A1	BEARING CARRIER ASSEMBLY	19	24	10-21140	SCREW, CONTROL VALVE TO HYDRAULIC PUMP (1 1/8")	21	9
62814A1	BELL HOUSING ASSEMBLY	9	1	10-21140	SCREW, MOUNTING BRACKET TO HYDRAULIC PUMP (1/2")	23	50
62816	RING, THRUST - BEARING CARRIER	17	21	10-21625	SCREW, STARTER SOLENOID TO MOUNTING BRACKET (3/4")	23	56
62911	COVER, TOP	13	29	10-21934	SCREW, SET - DRIVE SHAFT HOUSING	13	2
62952	PLATE, TRANSOM	3	1	10-22523	SCREW, CHECK VALVE GUIDE TO HOUSING (3/4")	13	16
63115A1	SENDER ASSEMBLY, TRIM INDICATOR (STARBOARD SIDE)	5	14	10-24234	SCREW, EXHAUST COVER TO TRANSOM PLATE - BOTTOM (1")	3	13
63115A2	SWITCH ASSEMBLY, TRIM LIMIT (PORT SIDE)	5	11	10-24234	SCREW, HYDRAULIC PUMP TO MOUNTING BRACKET (1")	21	29
63720	EMBLEM, GIMBAL HOUSING	9	24	10-28634	SCREW, FILLER - HYDRAULIC PUMP	21	5
64947	SENDER, DUMMY (STARBOARD SIDE)	5	14	10-28634	SCREW, VENT - DRIVE SHAFT HOUSING	13	9
66074A3	COMTROL VALVE ASSEMBLY(SERAIL	21	7	10-28634	SCREW, VENT - GEAR HOUSING	17	4
66103A1	THRUST RING ASSEMBLY .	17	21	10-28635	SCREW, RETAININGF COVER TO GIMBAL HOUSING (5/8")	11	50
66545	LEVER, STEERING(USE WITH LINK ROD DRILLED FOR COTTER PIN)	5	25	10-28636	SCREW, COVER TO GIMBAL HOUSING (3/4")	11	41
67538A1	LINK ROD ASSEMBLY, STEERING	7	29	10-29227	SCREW, HARNESS ATTACHING CLAMP (1/2")	21	23
74436A9	HYDRALIC PUMP ASSEMBLY, COMPLETE .	29	-	10-34290	SCREW, STARTER SOLENOID TO MOUNTING BRACKET (5/8")	23	56
74436A9	HYDRAULIC PUMP ASSEMBLY(SEE G14 FOR BREAKDOWN)	21	1	10-34763	SCREW, INHIBITOR PLATE TO GIMBAL HOUSING (3/4")	9	37
75832	CROSS AND BEARING ASSEMBLY	13	33	10-35047	SCREW, COVER TO DRIVE SHAFT HOUSING (1 1/4")	13	30
77011A7	GIMBAL RING ASSEMBLY ..	5	1	10-35047	SCREW, REAR COVER TO DRIVE SHAFT HOUSING (1 1/4")	15	48
N.S.S.	"O" RING (1 1/4" X 1 7/16" X 3/32")	27	3	10-35519	SCREW, TERMINAL BLOCK TO HYDRAULIC PUMP (1/2")	21	35
N.S.S.	"O" RING (1 3/8" X 1 5/8" X 1/8")	27	4	10-36137	SCREW, CHECK VALVE GUIDE COVER TO BELL HOUSING (1")	9	13
N.S.S.	"O" RING (1" X 1 3/16" X 3/32)	27	1				
N.S.S.	"O" RING (7/8" X 1 1/8" X 1/8")	27	2				
N.S.S.	BALL, STEEL	27	6				
N.S.S.	END CAP	27	16				
N.S.S.	END CAP, CYLINDER	27	13				
N.S.S.	END CAP, CYLINDER	27	13				
N.S.S.	PISTON, SHOCK	27	10				
N.S.S.	RIVET, TUBULAR	27	7				
N.S.S.	RIVET, TUBULAR	27	9				
N.S.S.	ROD SCRAPER	27	5				
N.S.S.	SPRING, COMPRESSION ..	27	12				
N.S.S.	SPRING, COMPRESSION ..	27	8				

PARTS INDEX

Part Number	Description	Pg.	Ref. No.	Part Number	Description	Pg.	Ref. No.
10-37978	SCREW, TRIM SENDER AND SWITCH TO GIMBAL RING (3/4")	5	17	11-34862	NUT, PINION GEAR TO UNIVERSAL JOINT	15	45
10-45833	SCREW, UPPER SWIVEL SHAFT RETAINING - GIMBAL RING (2 1/2")	5	9	11-34933	NUT, DRIVE SHAFT HOUSING STUD	13	7
10-46918	SCREW, VENT - HYDRAULIC PUMP	21	3	11-34933	NUT, DRIVE SHAFT HOUSING TO GEAR HOUSING STUD	19	37
10-46942	SCREW, HARNESS ATTACHING (5/16")	5	16	11-34933	NUT, STEERING LEVER SCREW	5	28
10-47225	SCREW, JUMPER CABLE	9	16	11-35000	NUT, BELL HOUSING STUD	9	5
10-47557	SCREW, GEAR HOUSING TO DRIVE SHAFT HOUSING (1 1/2")	19	36	11-35000	NUT, DRIVE SHAFT HOUSING ANCHOR PIN	25	7
10-49354	SCREW, TRIM TAB TO GEAR HOUSING (2 1/2")	17	15	11-35000	NUT, GIMBAL HOUSING TO TRANSOM PLATE STUD	3	8
10-54488	BOLT, LINK ROD TO STEERING LEVER	7	34	11-35000	NUT, GIMBAL RING ANCHOR PIN	25	13
10-54523	SCREW, OIL RESERVIOR COVER TO TRANSOM PLATE (1")	3	5	11-35888	NUT, HYDRAULIC CONNECTOR STUD	11	46
10-59784	SCREW, PUMP MOUNTING ATTCHING (1")	21	27	11-54034	NUT, PROPELLER (1 1/4-7 THREAD)	19	34
10-62568	SCREW, HARNESS LEADS TO TERMINAL BLOCK (3/8")	23	36	11-55438	NUT, LINK ROD	7	33
10-62568	SCREW, HYDRAULIC PUMP LEAD TO BRACKET (3/8")	23	48	11-55438	NUT, LINK ROD BOLT	7	31
10-62568	SCREW, SWITCH RETAINER TO CONTROL PANEL (1/2")	21	19	11-55819	NUT, PINION GEAR TO DRIVE SHAFT	17	8
10-63400	SCREW, HARNESS ATTACHING (5/32")	5	13	11-62794	NUT, DRIVE SHAFT	13	20
10-63400	SCREW, HARNESS ATTACHING (5/32")	5	16	11-68292	NUT, STARTER SOLENOID TERMINAL (5/16:-18)	23	44
10-66389	BOLT, LINK ROD TO STEERING LEVER	7	34	12-20086	WASHER, LINK ROD	7	32
10-68479	SCREW, STEERING LEVER TO UPPER SWIVEL SHAFT (2 1/4")	5	27	12-20086	WASHER, LINK ROD	7	32
11-20083	NUT, STARTER SOLENOID TERMINAL (5/16"-24)	23	44	12-20086	WASHER, LINK ROD BOLT	7	37
11-20509	NUT, LINK ROD	7	33	12-20260	WASHER, SEAL - VENT SCREW	17	5
11-20509	NUT, LINK ROD BOLT	5	31	12-20260	WASHER, SEALING - HYDRUALIC PUMP FILLER SCREW	21	6
11-20645	NUT, MOUNTING BRACKET TO HYDRAULIC PUMP THRU BOLT	23	53	12-20260	WASHER, SEALING - VENT SCREW	13	10
11-20645	NUT, STARTER SOLENOID TERMINAL (#10)	23	42	12-20546	WASHER, UPPER SWIVEL SHAFT RETAINING SCREW	5	10
11-21825	NUT, STARTER SOLENOID SCREW	23	58	12-24676	WASHER, CONTROL PANEL STUD	21	14
11-21908	NUT, HYDRAULIC PUMP SCREW	21	32	12-29245	WASHER, PUMP MOUNTING BRACKET SCREW	21	28
11-25599	NUT, STEERING LEVER TO UPPER SWIVEL SHAFT	5	26	12-34876	WASHER, GIMBAL HOUSING TO TRANSOM PLATE STUD	3	7
11-27164	NUT, CONTROL PANEL STUD	21	15	12-34966	WASHER, NYLON - LINK ROD BOLT	7	35
11-29250	NUT, EXHAUST COVER SCREW	3	12	12-47394	WASHER, DRIVE SHAFT HOUSING ANCHOR PIN (33/64"I.D.)	25	6
				12-47394	WASHER, GIMBAL RING ANCHOR PIN (33/64"I.D.)	25	12
				12-47395	WASHER, DRIVE SHAFT HOUSING ANCHOR PIN (59/64"I.D.)	25	3
				12-47395	WASHER, GIMBAL RING ANCHOR PIN (59/64"I.D.)	25	9

PARTS INDEX

Part Number	Description	Pg.	Ref. No.	Part Number	Description	Pg.	Ref. No.
12-54012	WASHER, BELL HOUSING STUD	9	4	15-47397A1	SHIM ASS'Y, ROLLER BEARING TO GEAR HSG. (.002-3-5-10)	17	16
12-54019	WASHER, ANTI-GALLING-BELL HOUSING (HINGE PIN)	5	7	15-54005A1	SHIM ASSEMBLY, ROLLER BEARING	17	22
12-54026	WASHER, UPPER SWIVEL SHAFT (2"O.D.)	5	23	15-55499A1	SHIM ASS'Y, ROLLER BEARING TO GEAR HSG. (.002-3-5-10-20)	17	16
12-54027	WASHER, UPPER SWIVEL SHAFT (1 5/8" O.D.)	5	24	15-55499A1	SHIM ASS'Y, TAPERED ROLLER BEARING TO REAR COVER	15	43
12-54048	WASHER, PINION GEAR TO DRIVE SHAFT	17	7	15-62833A1	SHIM ASS'Y, ROLLER BEARING TO HOUSING (.002-3-5-10-20)	15	37
12-55072	WASHER, THRUST - BEARING CARRIER	19	32	16-54011	STUD, BELL HOUSING TO DRIVE SHAFT HOUSING 93 1/4")	9	3
12-55073A1	WASHER ASSEMBLY, SPLINED - PROPELLER SHAFT	19	31	16-54674	STUD, DRIVE SHAFT HOUSING TO GEAR HOUSING (2 1/4")	13	6
12-62786	TAP WASHER, TAPERED ROLLER BEARING	15	42	16-55422	STUD, CONTROL PANEL TO BOAT (2")	21	13
12-62795	TAB WASHER, DRIVE SHAFT	13	18	16-56766	STUD, GIMBAL HOUSING TO HYDRAULIC CONNECTOR (1 3/8")	9	35
12-62797	WASHER, ROLLER BEARING TO COUPLING	13	23	16-57982	STUD, GEAR HOUSING TO DRIVE SHAFT HOUSING (1 7/8")	17	2
13-26992	LOCKWASHER, CHECK VALVE GUIDE COVER SCREW	9	14	16-57988	STUD, GIMBAL HOUSING TO TRANSOM PLATE (5 3/8")	9	31
13-26992	LOCKWASHER, CONTROL VALVE SCREW	21	10	17-47374	PIN, ANCHOR - GIMBAL RING (13 1/4")	25	8
13-26992	LOCKWASHER, MOUNTING BRACKET SCREW	23	51	17-49279	PIN, ANCHOR - DRIVE SHAFT HOUSING (10 3/4")	25	2
13-26992	LOCKWASHER, STARTER SOLENOID SCREW	23	57	17-54052	PIN, SWIVEL - GIMBAL HOUSING TO GIMBAL RING (LOWER)	11	47
13-26996	LOCKWASHER, STARTER SOLENOID TERMINAL (#10)	23	41	17-59812	PIN, HINGE - GIMBAL RING TO HOUSING (12 POINT SOCKET)	5	8
13-26996	LOCKWASHER, THRU BOLT	29	15	18-45882	COTTER PIN, REATANING - STEERING LINK ROD	7	30
13-26996	LOCKWASHER, TRIM SENDER AND SWITCH SCREW	5	18	18-54929	COTTER PIN, RETAINING - LOWER SWIVEL PIN	11	48
13-27660	LOCKWASHER, HYDRAULIC PUMP THRU BOLT	23	52	19-47579	PLUG, TRIM TAB HOLE - DRIVE SHAFT HOUSING	13	8
13-39107	LOCKWASHER, HYDRAULIC PUMP SCREW	21	30	20-48219	CHECK VALVE, OIL RELEASE	9	9
13-46917	LOCKWASHER, SEALING - VENT SCREW	21	4	20-48219	CHECK VALVE, OIL RELEASE	13	12
13-54667	WASHER, WAVE - LINK ROD BOLT	7	36	22-23612	FITTING, GREASE - GIMBAL HOUSING	9	29
13-62788	LOCKWASHER, DRIVE SHAFT	13	19	22-32561	PLUG, PIPE - UPPER SWIVEL SHAFT	5	22
14-34817	TAB WASHER, PROPELLER NUT	19	33	22-34982	CONNECTOR, CHECK VALVE GUIDE COVER	9	11
14-54167	TAB WASHER, GEAR HOUSING COVER	19	28	22-34982	CONNECTOR, TRANSOM PLATE (OIL HOSE)	3	14
15-26320A1	SHIM ASS'Y, ROLLER BEARING TO GEAR HOUSING (.002-3-5-10-20)	17	10	22-47902	VENT, OIL RESERVIOR (TRANSOM PLATE)	3	2
15-32061A1	SHIM ASSEMBLY, TAPERED ROLLER BEARING (.002-3-5-10-25)	13	24				

PARTS INDEX

Part Number	Description	Pg.	Ref. No.	Part Number	Description	Pg.	Ref. No.
22-49718	NUT, COMPRESSION - HYDRAULIC TUBING ATTACHING	25	18	26-48443	OIL SEAL, BELL HOUSING	9	2
22-52666	ELBOW, CONTROL VALVE	21	8	26-54925	OIL SEAL, UPPER GIMBAL HOUSING ROLLER BEARING	9	27
22-69059	FITTING, GREASE - GIMBAL RING	5	4	26-54926	OIL SEAL, BEARING CARRIER	19	26
23-36534	/SPACER, MOUNTING BRACKET	21	31	26-54927	OIL SEAL, GIMBAL RING	5	2
23-54002	BUSHING, GIMBAL RING (HINGE PIN)	5	6	26-62818	OIL SEAL, DRIVE SHAFT HOUSING	13	3
23-54421	BUSHING, SEALING - OIL TUBE	9	39	27-47644	GASKET, HYDRALIC - GIMBAL HOUSING	11	45
23-61291	BUSHING, RUBBER - DRIVE HOUSING ANCHOR PIN	25	5	27-54014	GASKET, BELL HOUSING TO DRIVE SHAFT HOUSING	9	6
23-61291	BUSHING, RUBBER - GIMBAL RING ANCHOR PIN	25	11	27-54014	GASKET, DRIVE SHAFT HOUSING TO BELL HOUSING	13	5
23-62789	SPACER, TAPERED ROLLER BEARING	15	39	27-54021	GASKET, CHECK VALVE GUIDE COVER	9	12
23-66093	RING, LOAD - THRUST RING	17	22	27-54307	GASKET, OIL RESERVIOR COVER	3	4
24-48442	SPRING, TENSION - OIL RELEASE CHECK VALVE	9	7	27-54395	GASKET, GIMBAL HOUSING TO TRANSOM	9	32
24-48442	SPRING, TENSION - OIL RELEASE CHECK VALVE	13	11	27-66925	GASKET, CHECK VALVE GUIDE	13	14
24-49593	SPRING, DRIVE SHAFT HOUSING ANCHOR PIN	25	4	28-30281	KEY, LOCATING - BEARING CARRIER	19	27
24-49593	SPRING, GIMBAL RING ANCHOR PIN	25	10	31-21145	BEARING,ROLLER - GIMBAL HOUSING (UPPER)	9	28
24-62727	SPRING, COMPRESSION - UNIVERSAL JOINT (COUPLING END)	13	36	31-35246	ROLLER BEARING, DRIVE SHAFT	17	3
25-21720	"O" RING, HYDRAULIC PUMP	29	1	31-35990A1	TAPERED ROLLER BEARING ASSEMBLY, DRIVE SHAFT	17	12
25-21720	"O" RING, HYDRAULIC PUMP TO CONTROL VALVE	21	2	31-38356A1	TAPERED ROLLER BEARING ASSEMBLY, DRIVE AHSFT	13	17
25-21720	"O" RING, HYDRAULIC PUMP TO CONTROL VALVE	21	7	31-38356A1	TAPERED ROLLER BEARING ASSEMBLY, UNIVERSAL JOINT	15	38
25-34821	"O" RING, BEARING CARRIER TOM THRUST RING	19	23	31-48941A1	TAPERED ROLLER BEARING ASSEMBLY, DRIVE SHAFT	17	11
25-39695	"O" RING, REAR COVER	15	46	31-54036A1	TAPERED ROLLER BEARING ASSEMBLY	17	19
25-47389A1	"O" RING KIT	27	-	31-54038A1	TAPERED ROLLER BEARING ASSEMBLY, PINION GEAR	15	41
25-48452	QUAD RING, OIL RELEASE CHECK VALVE	9	8	31-54038A1	TAPERED ROLLER BEARING ASSEMBLY, PROPELLER GEAR	17	17
25-48452	QUAD RING, OIL RELEASE CHECK VALVE	13	13	31-54042	BEARING, ROLLER - BEARING CARRIER	19	25
25-54029	"O" RING, GEAR HOUSING TO DRIVE SHAFT HOUSING	19	35	31-54043	BEARING, ROLLER - GIMBAL HOUSING (LOWER)	9	26
25-54030	"O" RING, GEAR HOUSING TO DRIVE SHAFT HOUSING	17	13	31-54928	ROLLER BEARING, GIMBAL RING(SWIVEL PIN)	5	3
25-54521	"O" RING, GIMBAL HOUSING	9	33	31-62799A1	TAPERED ROLLER BEARING ASSEMBLY	17	19
25-57093A1	BUSHING KIT	27	--	31-62799A1	TAPERED ROLLER BEARING ASSEMBLY, DRIVE GEAR	13	25
25-62817	"O" RING, DRIVE SHAFT HOUSING	13	4	31-62801A1	TAPERED ROLLER BEARING ASSEMBLY, PROPELLER GEAR	17	17
25-67202	"O" RING, TOP COVER	13	28				

PARTS INDEX

Part Number	Description	Pg.	Ref. No.	Part Number	Description	Pg.	Ref. No.
32-34423A1	HOSE, OIL - GIMBAL HOUSING TO TRANSOM PLATE (7 3/4")	11	42	85-63990	INSULATOR, SWITCH AND SENDER TO GIMBAL RING	5	20
32-47387A1	INNER CYLINDER TUBE ASSEMBLY (12 1/2" IN LENGTH)	27	15	89-68258	STARTER SOLENOID(SERIAL#4644609 AND BELOW)	23	40
32-49275A1	INNER CYLINDER TUBE ASSEMBLY (10 1/8" IN LENGTH)	27	15	392-2529	SPRING SET, BRUSH TENSION	29	13
32-54392	TUBE, OIL - GIMBAL HOUSING	9	38	392-2618	CAM, VALVE BODY	29	3
32-58432A2	TUBING ASS'Y, HYDRAULIC PUMP TO REVERSE LOCK VALVE (49")	25	17	392-2623	WASHER, THRUST - ARMATURE	29	7
32-63157A1	HOSE, HYDRAULIC - CONNECTOR TO PUMP (50 1/2")	25	16	392-2936	VALVE BODY AND GEAR ASSEMBLY	29	2
32-63158A1	HOSE, HYDRAULIC - CONNECTOR TO VALVE (25")	25	15	392-2937	SEAL, RESERVOIR TO VALVE BODY AND GEAR	29	5
32-68676	HOSE, HYDRAULIC - CONNECTOR TO TRIM CYLINDER (12 1/2")	25	14	392-2938	BOLT SET, THRU - PALTE AND FRAME TO RESERVOIR	29	14
37-39395	DECAL, SERIAL NUMBER	3	14	392-2939	RESERVOIR ASSEMBLY	29	6
37-63401A1	DECAL ASSEMBLY, DRIVE SHAFT HOUSING	15	49	392-2940	PLATE ASSEMBLY, COMMUTATOR END	29	11
37-76733	DECAL, GIMBAL HOUSING	9	24	392-2941	BRUSH SET, BRUSH TENSION	29	12
37-76758A1	DECAL ASSEMBLY, DRIVE SHAFT HOUSING	15	50	392-2942	FIELD AND FRAME ASSEMBLY	29	9
37-76761	DECAL, "255"	15	51	392-2943	ARMATURE, FIELD AND FRAME	29	8
43-62878	GEAR, DRIVE	15	40	392-2944	BALL, COMMUTATOR END PPLATE	29	10
43-62879	GEAR, DRIVEN - DRIVE SHAFT	13	26	1571-4847A5	DRIVE SHAFT HOUSING ASSEMBLY	13	1
43-62880	GEAR, PINION	17	6	1641-4855A13	GEAR HOUSING ASSEMBLY, COMPLETE(LEFT HAND ROTATION)	17	-
43-62881	GEAR, DRIVE	17	20	1641-4855A14	GEAR HOUSING ASSEMBLY, COMPLETE(RIGHT HAND ROTATION)	17	-
44-62792	PROPELLER SHAFT	17	18	1641-4855A4	GEAR HOUSING ASSEMBLY, COMPLETE(LEFT HAND ROTATION)	17	-
44-62820	PROPELLER SHAFT	17	18	1641-4855A5	GEAR HOUSING ASSEMBLY, COMPLETE(RIGHT HAND ROTATION)	17	-
45-62783	DRIVE SHAFT	17	9	1641-4855A6	GEAR HOUSING ASSEMBLY	17	1
45-62793	DRIVE SHAFT	13	27				
54-31765	CLAMP, BELLOWS TO GIMBAL HOUSING AND BELL HOUSING	9	20				
54-38889	CLAMP, EXHAUST BELLOWS ATTACHING	9	22				
54-46770	CLAMP, HARNESS ATTACHING	21	22				
54-54428	CLAMP, HOSE TO BELL HOUSING AND GIMBAL HOUSING	9	18				
54-54428	CLAMP, OIL HOSE TO GIMBAL HOUSING AND TRANSOM PLATE	11	43				
84-61109	BATTERY LEAD (NEGATIVE)	23	59				
84-61110	BATTERY LEAD (POSITIVE)	23	59				
84-63405	HARNESS, TRIM LIMIT SWITCH	5	12				
84-63406	HARNESS, TRIM INDICATOR SENDER	5	15				
84-64987	HARNESS, DUMMY SENDER	5	15				