



PARTS CATALOG

888 STERN DRIVE (1.50) RATIO

SERIAL NUMBER

888 1971-1977 3106717 AND UP

TABLE OF CONTENTS:

BELL HOUSING ASSEMBLY	14
DRIVE SHAFT HOUSING ASSEMBLY AND GEAR ASSEMBLY	18
GEAR HOUSING ASSEMBLY	26
GEAR HOUSING ASSEMBLY, COMPLETE	22
GIMBAL HOUSING ASSEMBLY	4
GIMBAL RING ASSEMBLY AND STEERING LEVER	8
HYDRAULIC PUMJJP AND TRIM INDICATOR CONTROL PANEL	30
HYDRAULIC PUMP ASSEMBLY, COMPLETE	34
PARTS INDEX	40
POWER TRIM CYLINDER REPAIR KITS	38
TRANSOM PLATE AND SHIFT CABLE	2
TRIM CYLINDERS AND HYDRAULIC HOSES	36

NOTE: *Indented description indicate that these parts are included in preceeding assembly.*

AR = As Required

NSS = Not Sold Separate

OPT = Optional

NS = Not Shown

THESE PARTS BOOKS/FICHE CARD ARE COPYRIGHTED AND MAY NOT BE DISTRIBUTED OR REPRODUCED IN ANY OTHER FORMAT BY ANYONE OTHER THAN MERCURY MARINE WITHOUT THE PRIOR WRITTEN CONSENT OF MERCURY MARINE.

REPLACEMENT PARTS ! WARNING !

Electrical, ignition and fuel system components on MerCruiser Engines and Stern Drives are designed and manufactured to comply with U.S. Coast Guard Rules and Regulations to minimize risks of fire or explosion. Use of replacement electrical, ignition or fuel system components, which do not comply to these rules and regulations, could result in a fire or explosion hazard and should be voided.

When servicing the electrical, ignition and fuel systems, it is extremely important that all components are properly installed and tightened. If not, any electrical or ignition component opening would permit sparks to ignite fuel vapors from fuel system leaks, if they existed.

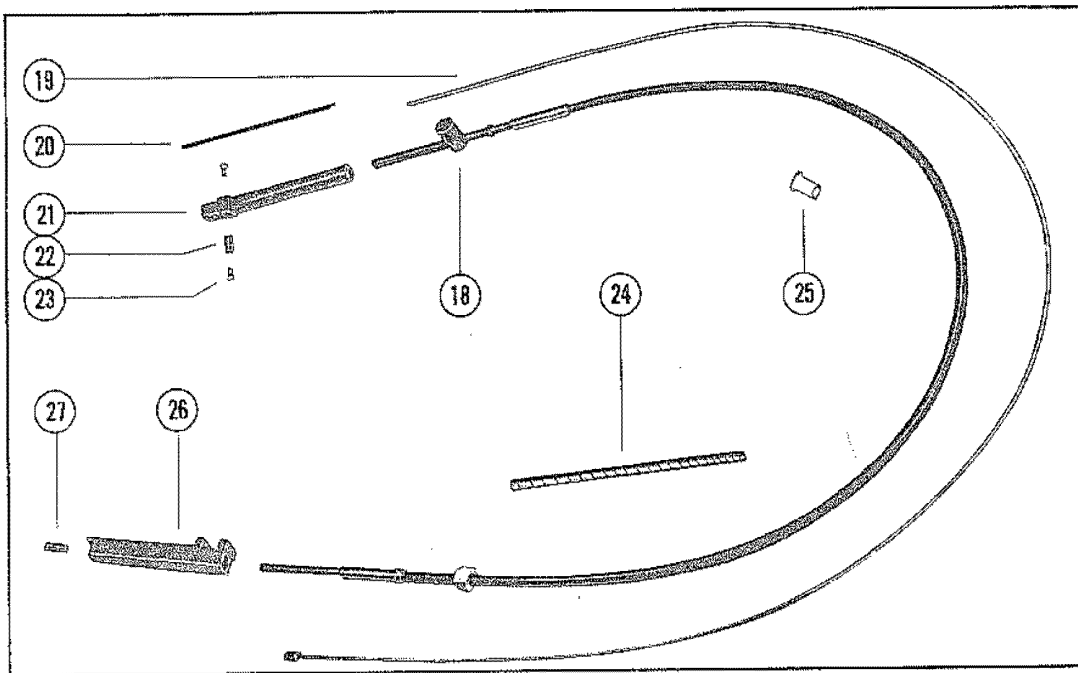
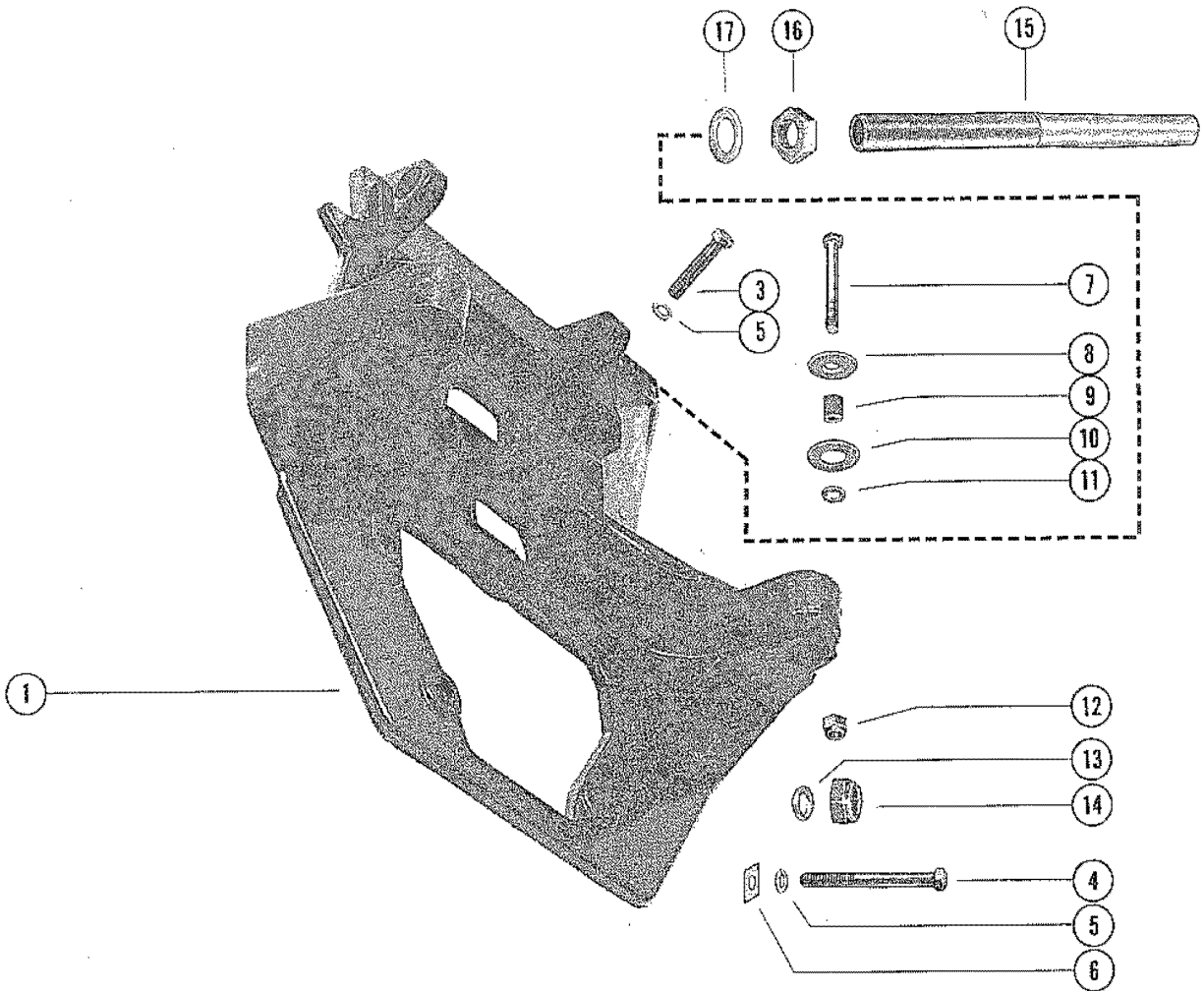
ENGINE MECHANICAL COMPONENTS

Many of the engine mechanical components are designed for marine applications. Unlike automotive engines, marine engines are subjected to extended periods of heavy load and wide- open-throttle operation, therefore, require heavy-duty components. Special marine engine parts have design and manufacturing specifications, which are required to provide long life and dependable performance. Marine engine parts also must be able to resist the corrosive action of salt or brackish water that will rust or corrode standard automotive parts within a short period of time.

Failure to use recommended Mercury Precision Parts OR Quicksilver service replacement parts can result in poor engine performance and/or durability, rapid corrosion of parts subjected to salt water and possibly complete failure of the engine.

Use of parts other than recommended service replacement parts will void the warranty on those parts which are damaged as a result of the use of other than recommended parts.

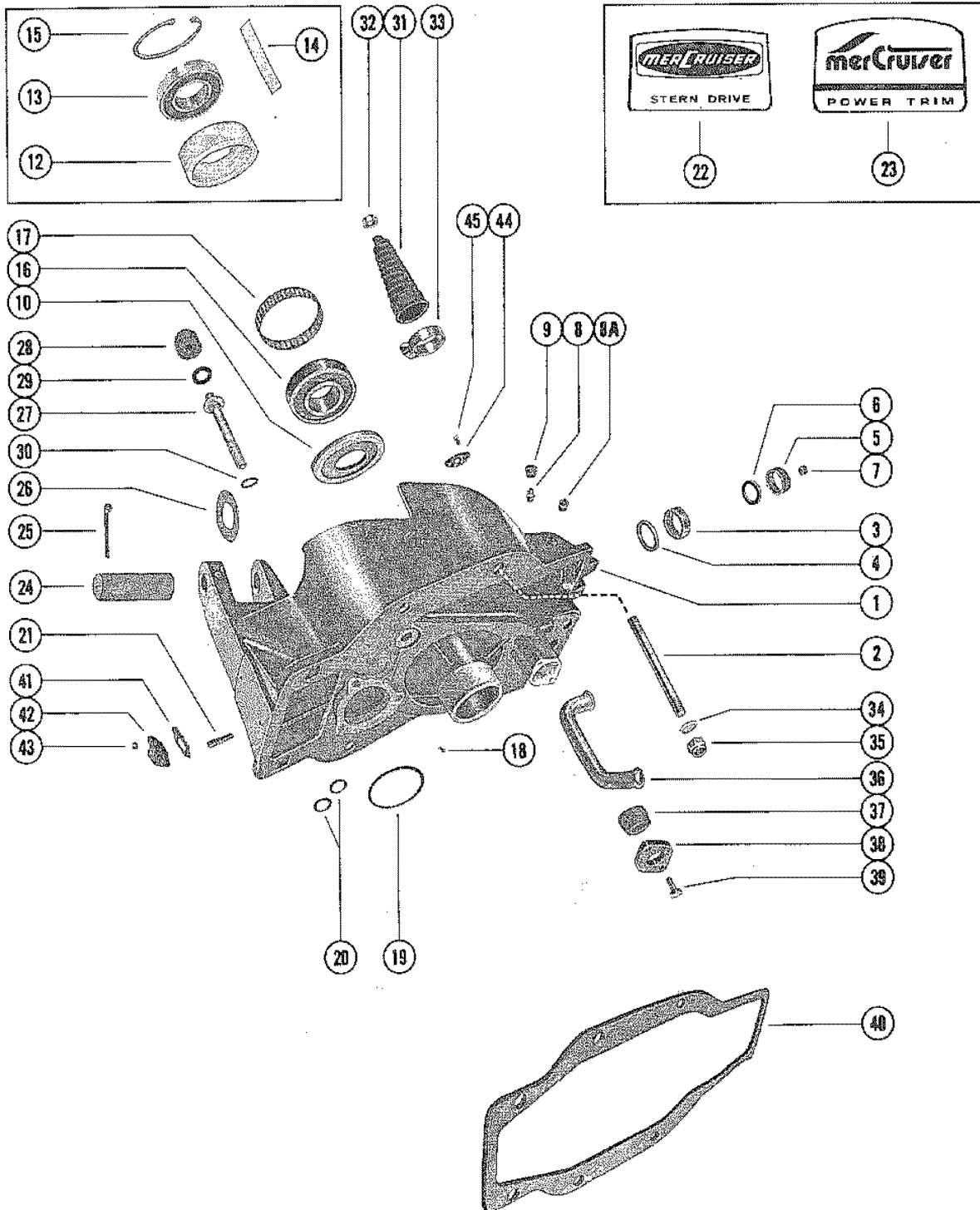
TRANSOM PLATE AND SHIFT CABLE



TRANSOM PLATE AND SHIFT CABLE

REF. NO.	PART NO.	SYM.	QTY.	DESCRIPTION
1	59821		1	PLATE, TRANSOM (WITHOUT GIMBAL TRIM SENDER)
	65545		1	PLATE, TRANSOM (WITH GIMBAL TRIM SENDER)
3	10-37269		2	SCREW, TRANSOM PLATE TO GIMBAL HOUSING (2")
4	10-37268		2	SCREW, TRANSOM PLATE TO GIMBAL HOUSING (4 1/4")
5	13-37272		4	LOCKEWASHER, TRANSOM PLATE SCREW
6	12-37271		2	WASHER, SQUARE - TRANSOM PLATE SCREW
7	10-36289		2	SCREW, TRANSOM PLATE TO ENGINE FLYWHEEL HOUSING (4 3/4")
8	12-28421		2	WASHER, TRANSOM PLATE SCREW
9	23-36290		2	SPACER, TRANSOM PLATE SCREW
10	12-32834		2	WASHER, TRANSOM PLATE SCREW
11	13-33734A1		2	LOCKWASHER, TRANSOM PLATE SCREW
12	11-20220		2	NUT, TRANSOM PLATE TO ENGINE FLYWHEEL HOUSING SCREW
13	12-21900		2	WASHER, GIMBAL HOUSING TO TRANSOM PLATE BOLT
14	11-34087		2	NUT, GIMBAL HOUSING TO TRANSOM PLATE BOLT
15	75158		1	TUBE, STEERING CABLE GUIDE (7/8" O.D.)
16	11-37984		2	NUT, JAM - STEERING CABLE GUIDE TUBE
17	12-37985		2	WASHER, STEERING CABLE GUIDE TUBE
18	49518A1		1	CABLE ASSEMBLY, SHIFT ACUATING SERIAL 0000000-03784374
19	38399A2		1	CORE WIRE ASS'Y, INNER SHIFT CABLE SERIAL 0000000-03784374
20	32-38377		1	TUBE, SHIFT ACTUATING CABLE SERIAL 0000000-03784374
18	66065A1		1	CABLE ASSEMBLY, SHIFT ACTUATING SERIAL # THRU # SERIAL 03784375-00443319
19	66069A2		1	CORE WIRE ASS'Y, INNER SHIFT CABLE SERIAL 03784375-00443319
20	32-38377		1	TUBE, SHIFT ACTUATING CABLE SERIAL 03784375-00443319
18	73679A2		1	CABLE ASSEMBLY, SHIFT ACTUATING SERIAL # AND UP SERIAL 04433200-09999999
19	66069A2		1	CORE WIRE ASS'Y, INNER SHIFT CABLE SERIAL 04433200-09999999
20	32-38377		1	TUBE, SHIFT ACTUATING CABLE SERIAL 04433200-09999999
21	29880		1	GUIDE, SHIFT ACTUATING CABLE END
22	20007		1	ANCHOR, SHIFT ACTUATING CABLE END GUIDE
23	10-20518		2	SCREW, SET - ANCHOR TO SIFT ACTUATING CABLE END GUIDE
24	38473		1	WRAPPING, SHIFT ACTUATING CABLE
25	32-34049		1	TUBE, NYLON - SHIFT ACTUATING CABLE GUIDE
26	33981		1	SLIDE, SHIFT ACTUATING CABLE
27	10-31700		1	SCREW, SET - SHIFT ACTUATING CABLE TO SLIDE

GIMBAL HOUSING ASSEMBLY

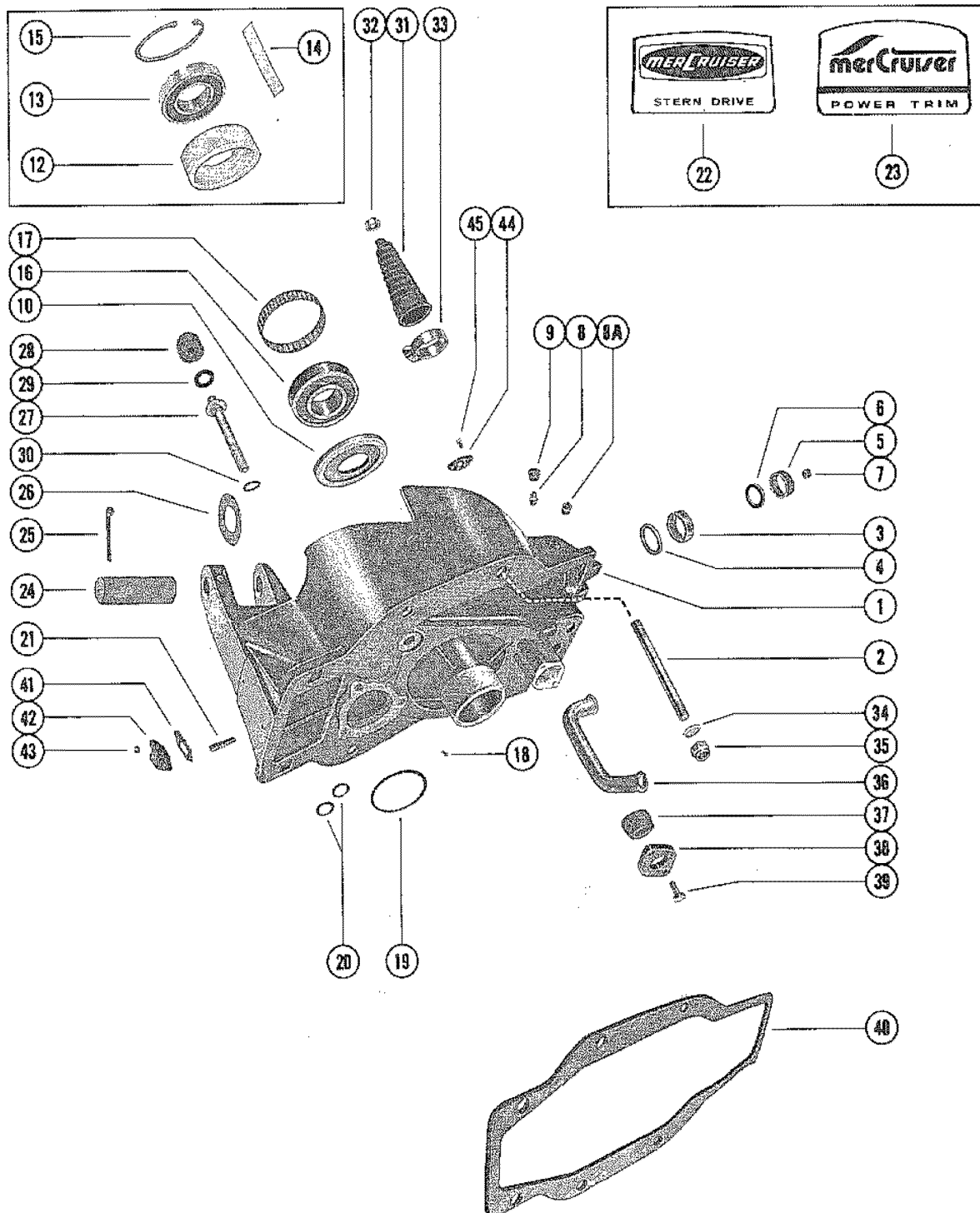


GIMBAL HOUSING ASSEMBLY

REF. NO.	PART NO.	SYM.	QTY.	DESCRIPTION
1	63504A1		1	GIMBAL HOUSING ASSEMBLY (WITHOUT GIMBAL TRIM SENDER)
	70862A1		1	GIMBAL HOUSING ASSEMBLY (WITH GIMBAL TRIM SENDER)
2	16-56296		2	STUD, GIMBAL HOUSING TO TRANSOM PLATE (4 3/4")
3	31-32536		1	BEARING, ROLLER - GIMBAL HOUSING (LOWER)
4	26-32911		1	OIL SEAL, LOWER GIMBAL HOUSING ROLLER BEARING
5	23-39634		1	BUSHING, SYNTHANE - GIMBAL HOUSING (UPPER) WITHOUT GIMBAL TRIM SENDER
6	26-32540		1	OIL SEAL, UPPER GIMBAL HOUSING BUSHING WITHOUT GIMBAL TRIM SENDER
5	31-21145		1	ROLLER BEARING, GIMBAL HOUSING (UPPER) WITH GIMBAL TRIM SENDER
6	26-54925		1	OIL SEAL, UPPER GIMBAL HOUSING BEARING WITH GIMBAL TRIM SENDER
7	22-52644		1	PLUG, PIPE - GIMBAL HOUSING
8	22-31345		2	FITTING, GREASE - GIMBAL HOUSING
	22-74036		2	FITTING, GREASE - GIMBAL HOUSING (STAINLESS STEEL)
8A	19-58934		2	PLUG, PLASTIC - GIMBAL HOUSING
9	29359		2	LUBRICAP, GIMBAL HOUSING GREASE FITTING
10	26-36143		1	SEAL, GREASE - GIMBAL HOUSING
12	23-35130		1	ADAPTOR, BEARING CARRIER WHEN ORDERING REPLACEMENTS, SEE PHOTO FOR PROPER IDENTIFICATION
13	30-36418		1	BEARING, BALL - GIMBAL HOUSING WHEN ORDERING REPLACEMENTS, SEE PHOTO FOR PROPER IDENTIFICATION
14	15-35244A1		AR	SHIM, GIMBAL HOUSING BEARING (.022 THRU .010) WHEN ORDERING REPLACEMENTS, SEE PHOTO FOR PROPER IDENTIFICATION
15	53-35128		1	SNAP RING, BEARING RETAINING WHEN ORDERING REPLACEMENTS, SEE PHOTO FOR PROPER IDENTIFICATION
16	30-60794A2		1	BEARING ASSEMBLY, BALL - GIMBAL HOUSING WHEN ORDERING REPLACEMENTS, SEE PHOTO FOR PROPER IDENTIFICATION
17	61075		1	TOLERANCE RING, GIMBAL HOUSING BEARING WHEN ORDERING REPLACEMENTS, SEE PHOTO FOR PROPER IDENTIFICATION
18	10-25612		13	SCREW, DRIVE - GIMBAL HOUSING EXHAUST FLANGE
19	25-20863		1	"O" RING, GIMBAL HOUSING
20	25-23145		2	"O" RING, GIMBAL HOUSING
21	16-56766		2	STUD, HYDRAULIC CONNECTOR TO GIMBAL HOUSING
22	38-60884		1	EMBLEM, GIMBAL HOUSING SEE PHOTO FOR CORRECT REPLACEMENT
23	37-76733		1	DECAL, GIMBAL HOUSING SEE PHOTO FOR CORRECT REPLACEMENT
24	17-45212		1	PIN, SWIVEL - GIMBAL HOUSING TO GIMBAL RING (LOWER)
25	18-34212		1	COTTER PIN, RETAINING - LOWER SWIVEL PIN

CONTINUED ON NEXT PAGE ➡

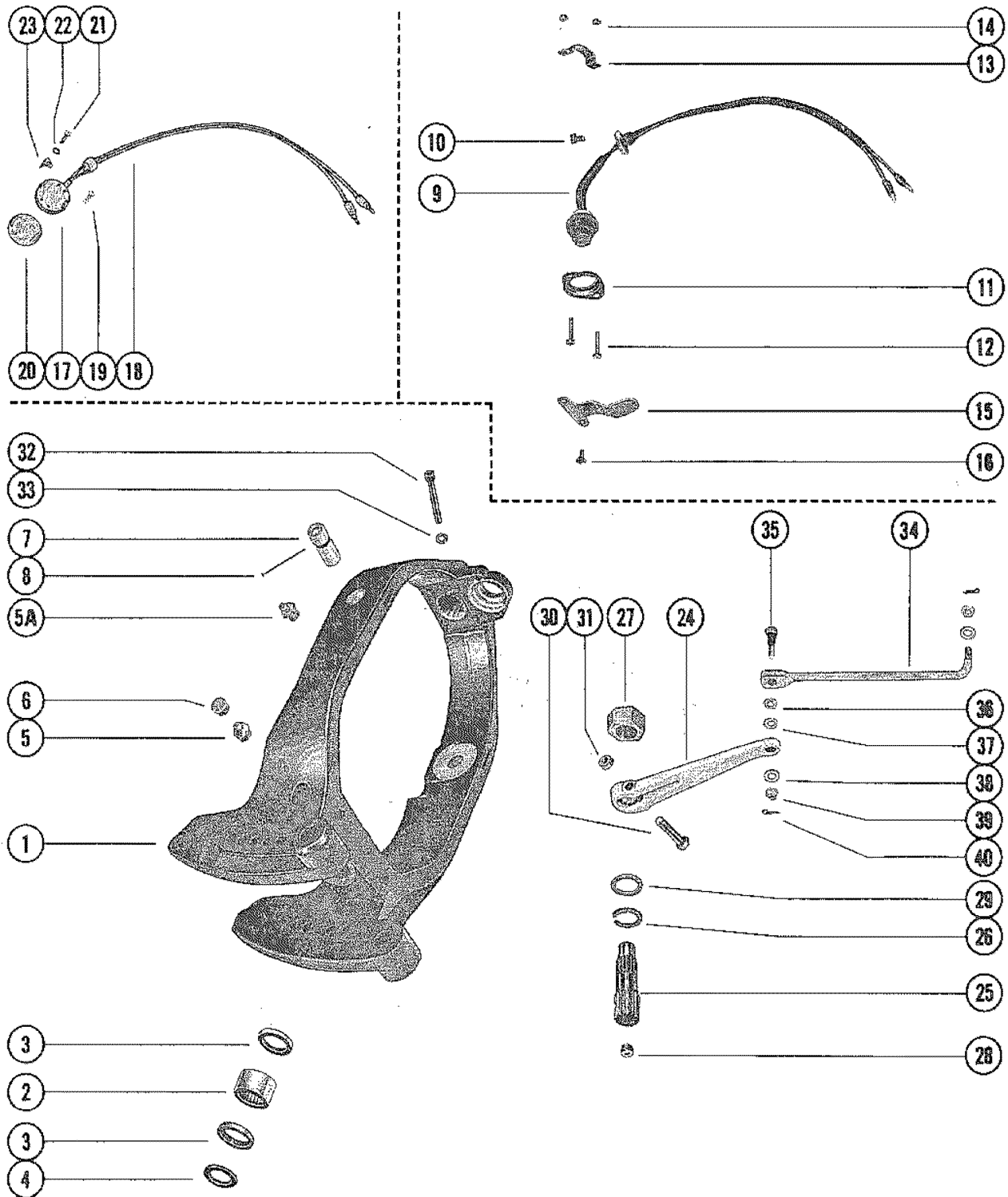
GIMBAL HOUSING ASSEMBLY



GIMBAL HOUSING ASSEMBLY

REF. NO.	PART NO.	SYM.	QTY.	DESCRIPTION
26	12-32518		1	WASHER, GIMBAL HOUSING TO LOWER SWIVEL PIN
27	55989A1		2	BOLT ASSEMBLY, ANONIC - GIMBAL HOUSING TO TRANSOM PLATE
28	55989		2	ANODIC HEAD, BOLT ASSEMBLY
29	12-56085		2	WASHER, ANODIC BOLT ASSEMBLY
30	12-32620		2	WASHER, GIMBAL HOUSING BOLT
31	74639		1	BELLOWS, SHIFT ACTUATING CABLE
32	54-38863		1	CLAMP, ACTUATING CABLE BELLOWS TO SHIFT ACTUATING CABLE
33	54-31766		1	CLAMP, SHIFT ACTUATING CABLE BELLOWS TO GIMBAL HOUSING
34	12-22248		2	WASHER, GIMBAL HOUSING STUD
35	11-34933		2	NUT, GIMBAL HOUSING STUD
36	32-60542		1	TUBE, WATER - GIMBAL HOUSING
37	23-28055		1	BUSHING, RUBBER - WATER TUBE SEALING
38	32517		1	COVER, WATER TUBE SEALING BUSHING - GIMBAL HOUSING
39	10-28635		2	SCREW, WATER TUBE SEALING COVER TO GIMBAL HOUSING (5/8")
40	27-65373		1	GASKET, GIMBAL HOUSING TO TRANSOM (WITHOUT GIMBAL TRIM SENDE
	65533		1	SEAL, GIMBAL HOUSING TO TRANSOM (WITH GIMBAL TRIM SENDER)
41	27-47644		1	GASKET, HYDRAULIC CONNECTOR
42	47347		1	CONNECTOR, HYDRAULIC - GIMBAL HOUSING
43	11-35888		2	NUT, GIMBAL HOUSING TO HYDRAULIC CONNECTOR STUD
44	57322		1	COVER, RETAINING - GIMBAL HOUSING WITH GIMBAL TRIM SENDER
45	10-28635		2	SCREW, COVER TO GIMBAL HOUSING (5/8") WITH GIMBAL TRIM SENDER

GIMBAL RING ASSEMBLY AND STEERING LEVER

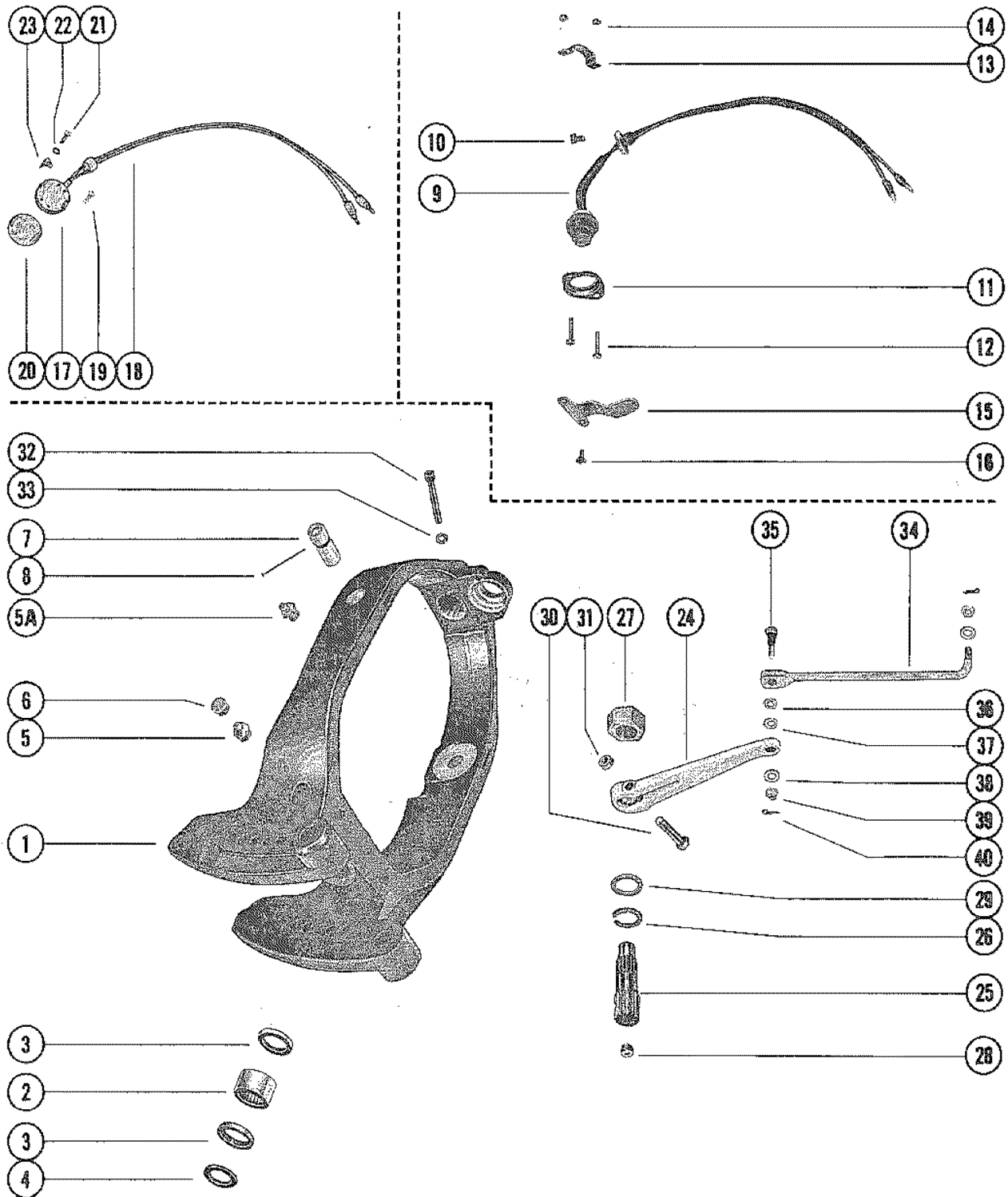


GIMBAL RING ASSEMBLY AND STEERING LEVER

REF. NO.	PART NO.	SYM.	QTY.	DESCRIPTION
1	45515A2		1	GIMBAL RING ASSEMBLY (WITHOUT GIBAL TRIM SENDER)
	65534A2		1	GIMBAL RING ASSEMBLY (WITH GIMBAL TRIM SENDER)
	77124A2		1	GIMBAL RING ASSLEBLY (WITH GIMBAL TRIM SENDER AND GREASE FIT)
2	31-32538		1	BEARING, ROLLER - GIMBAL RING
3	26-32541		2	OIL SEAL, GIMBAL RING
4	23-39273		1	SPACER, GIMBAL RING
5	22-69059		1	FITTING, GREASE - GIMBAL RING (1/8-27)
5A	22-74036		2	FITTING, GREASE - GIMBAL RING (1/4-28) - USED WITH B-77124A
6	29359		1	LUBRICAP, GIMBAL RING GREASE FITTING
7	17-38031		2	PIN, HINGE - GIMBAL RING TO BELL HOUSING WITHOUT GIMBAL TRIM SENDER
8	17-35571		2	PIN, HINGE PIN RETAINING - GIMBAL RING WITHOUT GIMBAL TRIM SENDER
7	65547		2	PIN, HINGE - THREADED (WITHOUT GREASE GROOVE) WITH GIMBAL TRIM SENDER
	77123		2	PIN, HINGE - THREADED (WITH GREASE GROOVE) WITH GIMBAL TRIM SENDER
9	45942A1		1	TILT STOP SWITCH ASSEMBLY, GIMBAL RING WITHOUT GIMBAL TRIM SENDER
10	10-20367		2	SCREW, SWITCH COVER TO GIMBAL RING (7/16") WITHOUT GIMBAL TRIM SENDER
11	31899		1	PLATE, RETAINING - SWITCH TO GIMBAL RING WITHOUT GIMBAL TRIM SENDER
12	10-45862		2	SCREW, PLATE AND STRAP TO GIMBAL RING (7/8") WITHOUT GIMBAL TRIM SENDER
13	32637		1	STRAP, TILT STOP SWITCH RETAINING WITHOUT GIMBAL TRIM SENDER
14	11-20110		2	NUT, PLATE AND STRAP SCREW WITHOUT GIMBAL TRIM SENDER
15	49343		1	LEVER, ACTUATING - GIMBAL RING WITHOUT GIMBAL TRIM SENDER
16	10-31903		2	SCREW, ACTUATING LEVER TO GIMBAL RING (3/8") WITHOUT GIMBAL TRIM SENDER
17	64947		1	SENDER, DUMMY (STARBOARD) WITH GIMBAL TRIM SENDER
18	84-70967		1	HARNESS, DUMMY SENDER WITH GIMBAL TRIM SENDER
19	10-46942		2	SCREW, HANESS ATTACHING (5/16") WITH GIMBAL TRIM SENDER
17	63115A2		1	SWITCH ASSEMBLY, TRIM LIMIT (PORT SIDE) WITH GIMBAL TRIM SENDER
18	84-70968		1	HARNESS, TRIM LIMIT SWITCH WITH GIMBAL TRIM SENDER
19	10-63400		2	SCREW, HARNESS ATTACHING (5/32") WITH GIMBAL TRIM SENDER
20	85-63990		2	INSULATOR, SWITCH AMD SENDER WITH GIMBAL TRIM SENDER
21	10-37978		4	SCREW, SWITCH AND SENDER TO GIMNAL RING (3/4") WITH GIMBAL TRIM SENDER

CONTINUED ON NEXT PAGE ➡

GIMBAL RING ASSEMBLY AND STEERING LEVER

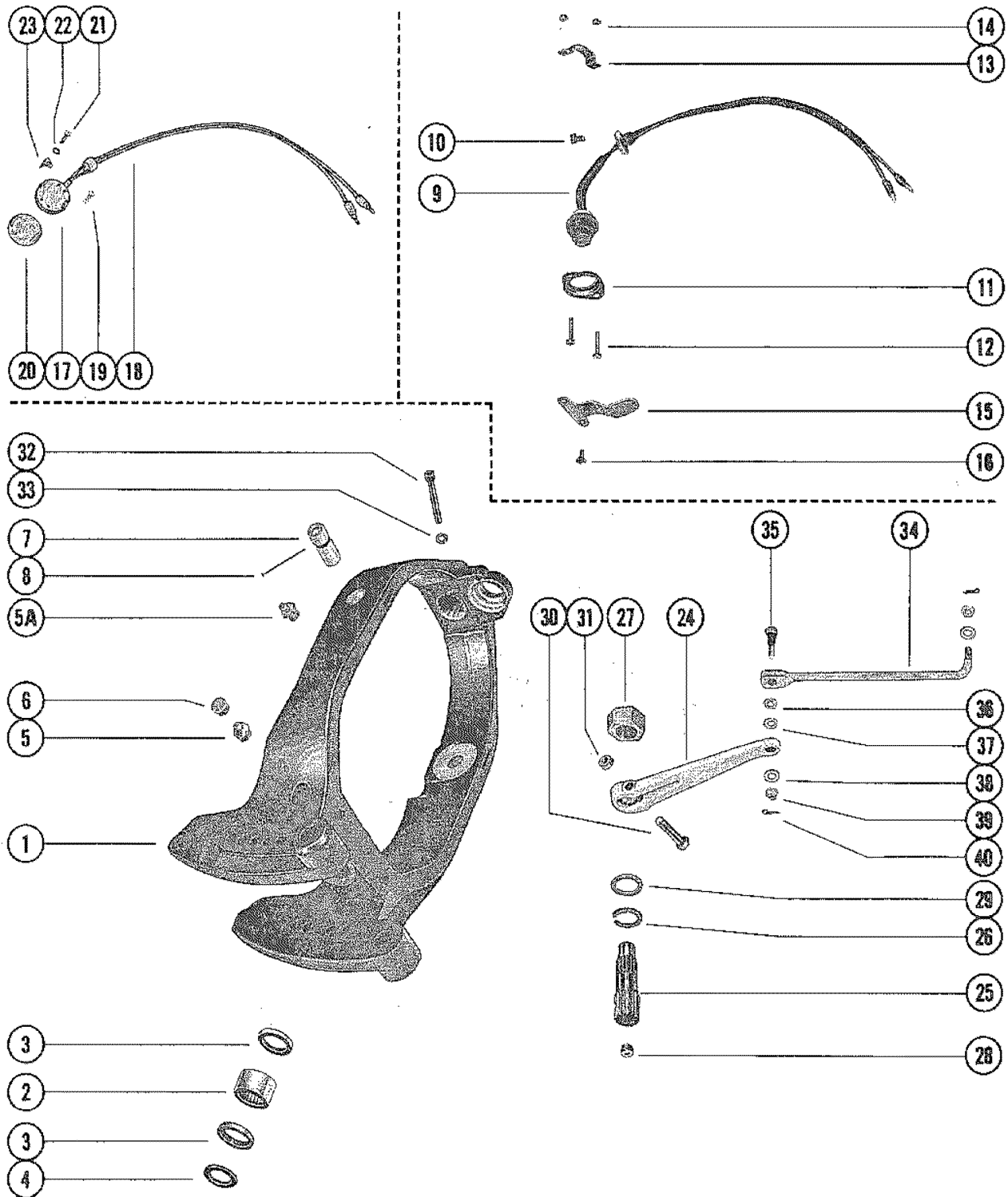


GIMBAL RING ASSEMBLY AND STEERING LEVER

REF. NO.	PART NO.	SYM.	QTY.	DESCRIPTION
22	13-26996		4	LOCKWASHER, SWITCH AND SENDER SCREW WITH GIMBAL TRIM SENDER
23	57008		4	RETAINER, SWITCH AND SENDER SCREW WITH GIMBAL TRIM SENDER
24	54666		1	STEERING LEVER (USE WITH LINK ROD NOT DRILLED FOR COTTER PIN)
	66545		1	STEERING LEVER (USE WITH LINK ROD DRILLED FOR COTTER PIN)
25	32582		1	SHAFT, UPPER SWIVEL (WITHOUT GIMBAL TRIM SENDER)
	65537		1	SHAFT, UPPER SWIVEL WITH GIMBAL TRIM SENDER
26	53-72413		1	RETAINING RING, UPPER SWIVEL SHAFT WITH GIMBAL TRIM SENDER WITH GIMBAL TRIM SENDER
27	11-25599		1	NUT, UPPER SWIVEL SHAFT WITH GIMBAL TRIM SENDER
28	22-32561		1	PLUG, PIPE - UPPER SWIVEL SHAFT
29	12-32996		AR	WASHER, UPPER SWIVEL SHAFT (.015) WITHOUT GIMBAL TRIM SENDER
	12-32997		AR	WASHER, UPPER SWIVEL SHAFT (.063) WITHOUT GIMBAL TRIM SENDER
	12-47683		1	WASHER, UPPER SWIVEL SHAFT (.031) WITH GIMBAL TRIM SENDER
	12-32997		2	WASHER, UPPER SWIVEL SHAFT (.062) WITH GIMBAL TRIM SENDER
30	10-32995		1	SCREW, STEERING LEVER TO UPPER SWIVEL SHAFT (2")
31	11-20696		1	NUT, STEERING LEVER TO UPPER SWIVEL SHAFT SCREW
32	10-45833		1	SCREW, UPPER SWIVEL SHAFT (2 1/2") WITHOUT GIMBAL TRIM SENDER
33	12-20546		1	WASHER, UPPER SWIVEL SHAFT SCREW WITHOUT GIMBAL TRIM SENDER
34	60456		1	LINK ROD, STEERING LINK ROD NOT DRILLED FOR COTTER PIN
35	10-54488		1	SCREW, LEVER TO LINK ROD LINK ROD NOT DRILLED FOR COTTER PIN
36	12-34966		1	WASHER, STEERING LINK ROD (NYLON) LINK ROD NOT DRILLED FOR COTTER PIN
37	13-54667		1	WASHER, SPRING - STEERING LINK ROD LINK ROD NOT DRILLED FOR COTTER PIN
38	12-20086		2	WASHER, STEERING LINK ROD (STEEL) LINK ROD NOT DRILLED FOR COTTER PIN
39	11-20509		2	NUT, STEERING LINK ROD LINK ROD NOT DRILLED FOR COTTER PIN
34	66388A1		1	STEERING LINK ROD ASSEMBLY LINK ROD DRILLED FOR COTTER PIN
35	10-66389		1	SCREW, LEVER TO LINK ROD LINK ROD DRILLED FOR COTTER PIN
36	12-34966		1	WASHER, STEERING LINK ROD (NYLON) LINK ROD DRILLED FOR COTTER PIN
37	13-54667		1	WASHER, SPRING - STEERING LINK ROD LINK ROD DRILLED FOR COTTER PIN

CONTINUED ON NEXT PAGE ➡

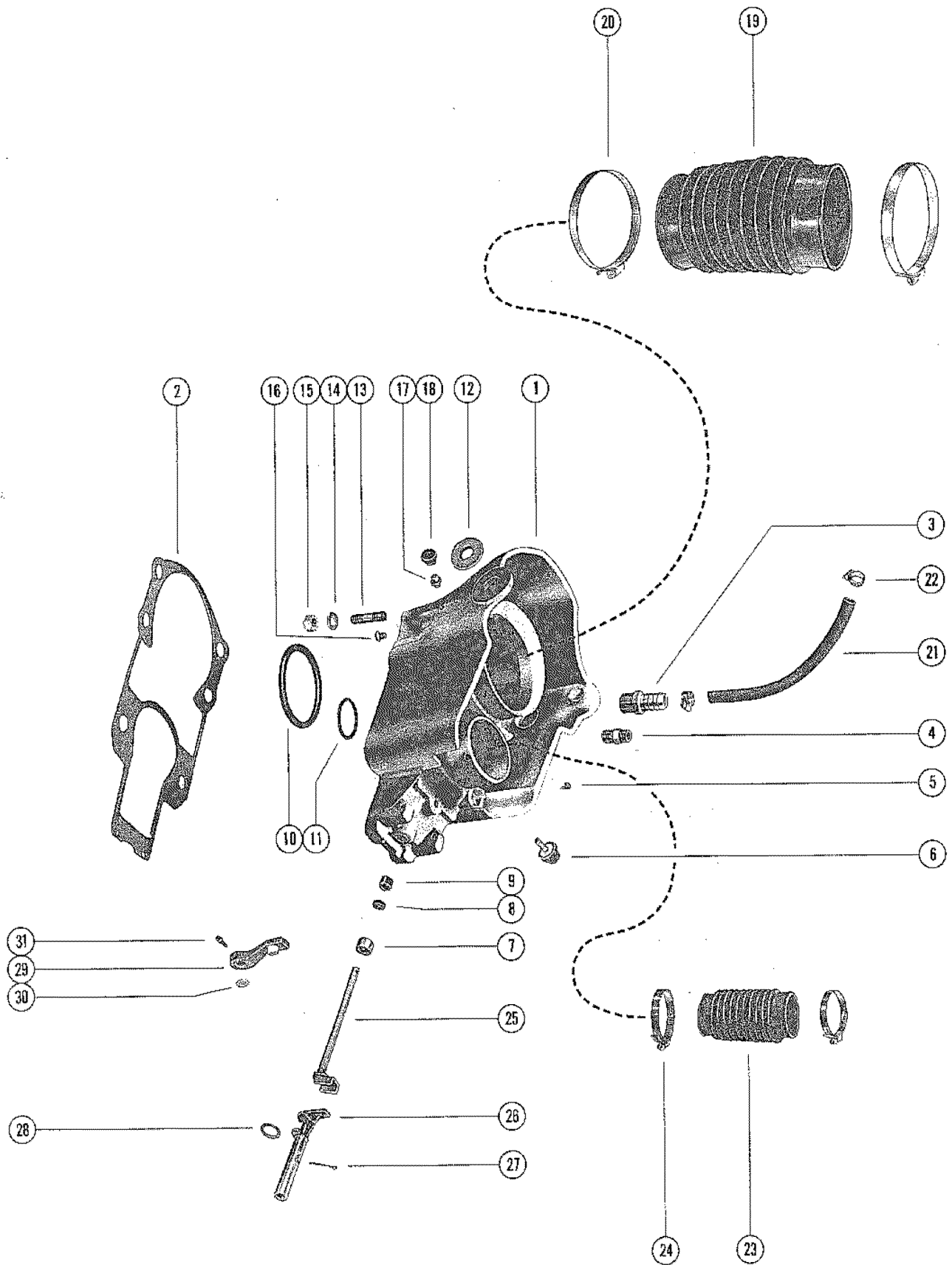
GIMBAL RING ASSEMBLY AND STEERING LEVER



GIMBAL RING ASSEMBLY AND STEERING LEVER

REF. NO.	PART NO.	SYM.	QTY.	DESCRIPTION
38	12-20086		2	WASHER, STEERING LINK ROD (STEEL) LINK ROD DRILLED FOR COTTER PIN
39	11-55438		2	NUT, STEERING LINK ROD LINK ROD DRILLED FOR COTTER PIN
40	18-45882		2	COTTER PIN, LINK ROD AND SCREW LINK ROD DRILLED FOR COTTER PIN

BELL HOUSING ASSEMBLY

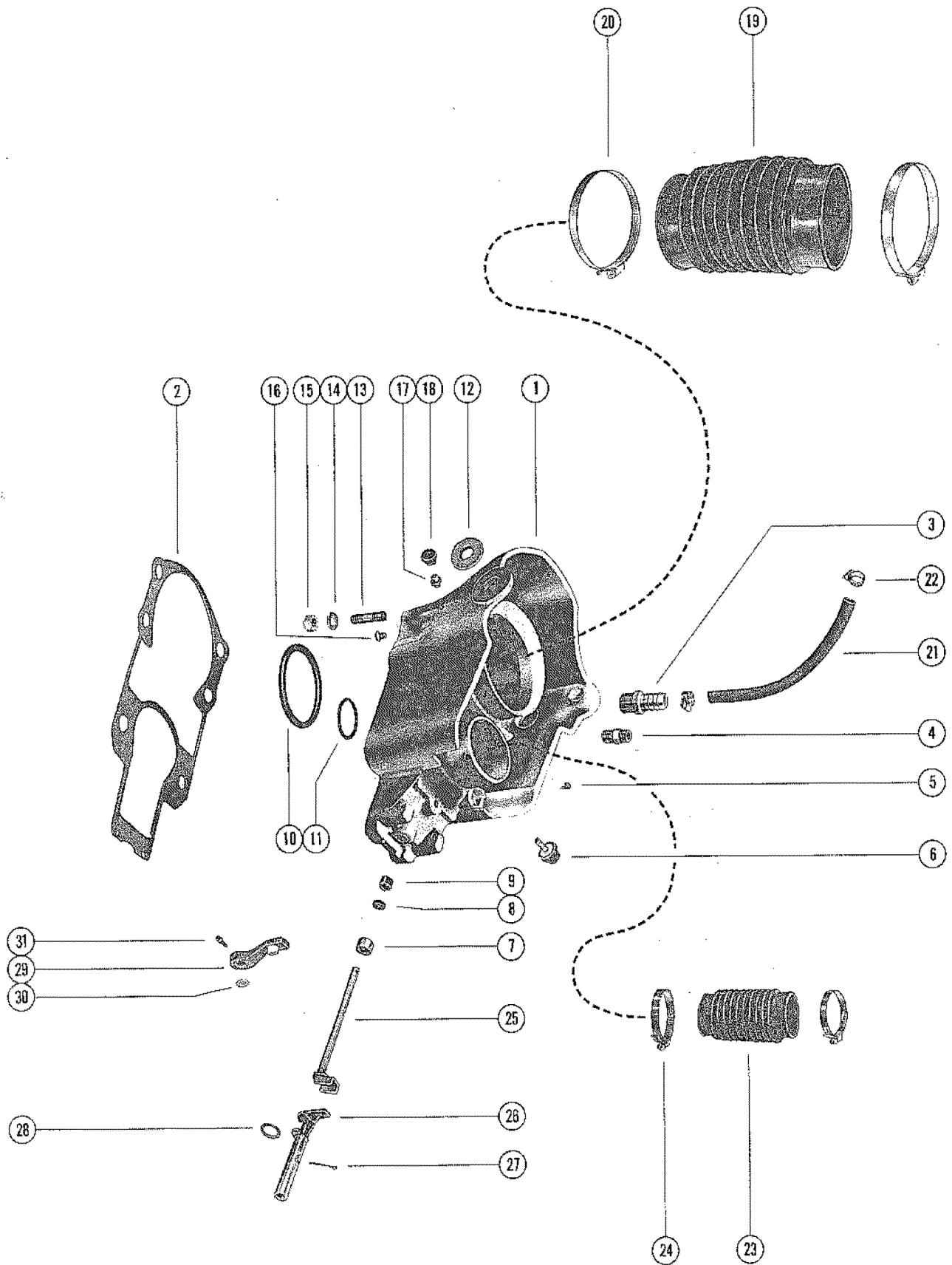


BELL HOUSING ASSEMBLY

REF. NO.	PART NO.	SYM.	QTY.	DESCRIPTION
1	46734A1		1	BELL HOUSING ASSEMBLY SERIAL 00000000-03472477
	63505A1		1	BELL HOUSING ASSEMBLY SERIAL 03472478-03784374
	66156A6		1	BELL HOUSING ASSEMBLY (WITHOUT GIMBAL TRIM SENDER)
	65535A4		1	BELL ASSEMBLY (WITH GIMBAL TRIM SENDER)
2	27-64818		1	GASKET, DRIVE SHAFT HAG. TO BELL HAG.(PART OF DRIVE SHAFT H
3	22-33066		1	CONNECTOR, WATER HOSE TO BELL HOUSING
4	22-32125		1	CONNECTOR, SHIFT CABLE - BELL HOUSING (EARLY MODELS)
5	10-25612		8	SCREW, DRIVE - BELL HOUSING FLANGE
6	31014		1	BUMPER, BELL HOUSING SERIAL 00000000-03472477
	63679		1	BUMPER, BELL HOUSING SERIAL 03472478-09999999
7	23-35088		1	BUSHING, BELL HOUSING (5/8")
8	26-45587		1	OIL SEAL, BELL HOUSING
9	23-45588		1	BUSHING, BELL HOUSING (5/16")
10	27-35982		1	GASKET, RUBBER - BELL HOUSING
11	25-33504		1	"O" RING, BELL HOUSING
12	12-38000		2	WASHER, SYNTHANE - BELL HOUSING (WITHOUT GIMBAL TRIM SENDER)
	12-72498		2	WASHER, SYNTHANE - BELL HOUSING (WITH GIMBAL TRIM SENDER)
13	16-59579		6	STUD, BELL HOUSING TO DRIVE SHAFT HOUSING
14	12-35935		6	WASHER, BELL HOUSING STUD
15	11-34933		6	NUT, BELL HOUSING STUD
16	10-36398		2	SCREW, PLUG - BELL HOSUING (1/4") WITHOUT GIMBAL TRIM SENDER
17	22-31345		2	FITTING, GREASE - BELL HOUSING WITHOUT GIMBAL TRIM SENDER
18	29359		2	LUBRICAP, BELL HOUSING GREASE FITTING WITHOUT GIMBAL TRIM SENDER
19	36223A1		1	BELLOWS ASSEMBLY, UNIVERSAL JOINT SERIAL 00000000-03472477
	60932A1		1	BELLOWS ASSEMBLY, UNIVERSAL JOINT SERIAL 03472478-09999999
20	54-31765		2	CLAMP, UNIVERSAL JOINT BELLOWS TO BELL HOUSING AND GIMBAL HO
21	32-47642		1	HOSE, WATER - BELL HOUSING TO GIMBAL HOUSING
22	54-32523		2	CLAMP, WATER HOSE ATTACHING
23	32734		1	BELLOWS, EXHAUST - BELL HOUSING TO GIMBAL HOUSING
24	54-32533		2	CLAMP, EXHAUST BELLOWS TO BELL HOUSING AND GIMBAL HOUSING
25	45589A1		1	SHAFT ASSEMBLY, SHIFT - UPPER
26	32628		1	SHAFT, SHIFT - INTERMEDIATE SERIAL 00000000-03472478
	62104		1	SHAFT, SHIFT - INTERMEDIATE SERIAL 03248348-09999999

CONTINUED ON NEXT PAGE ➡

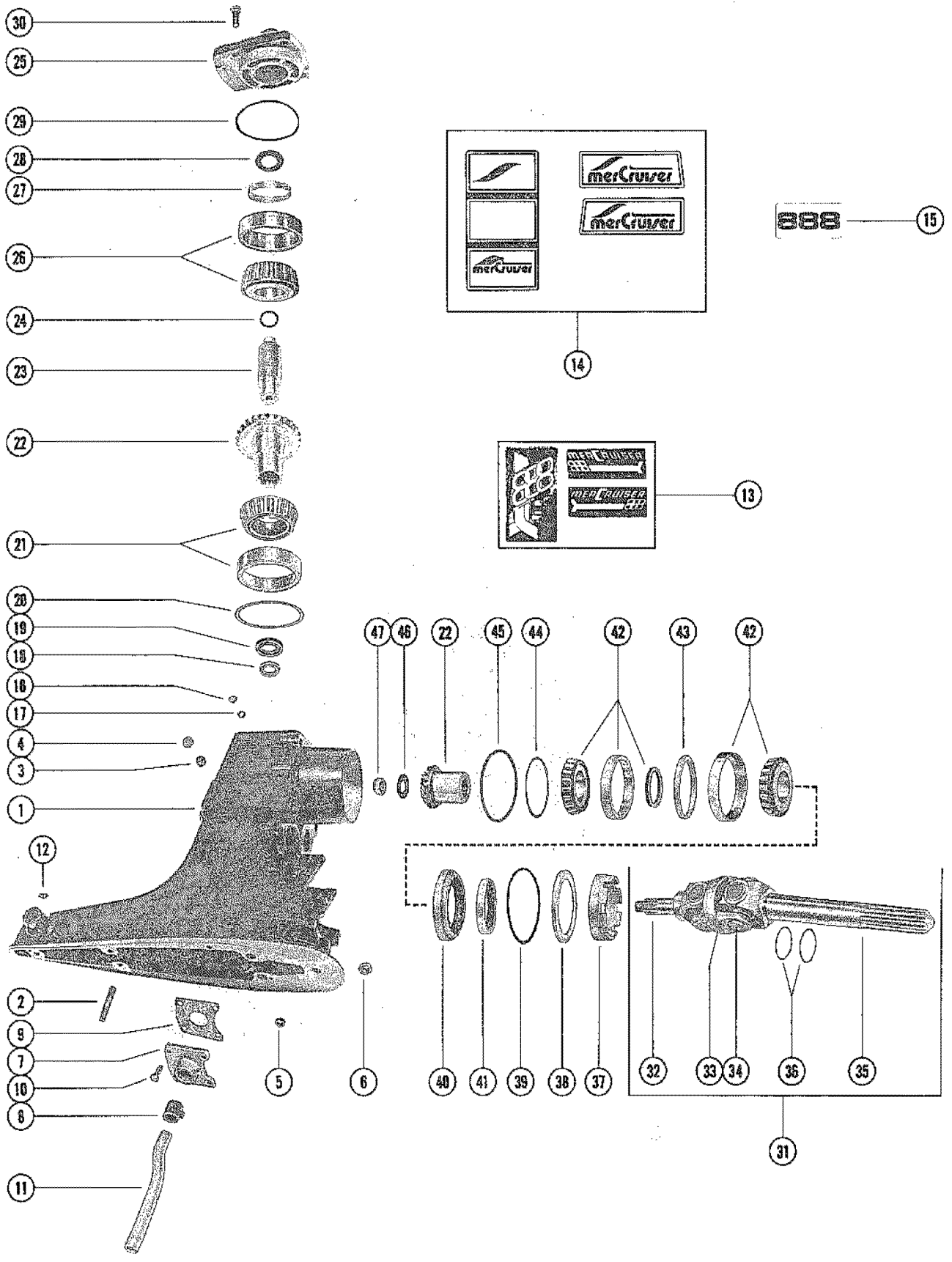
BELL HOUSING ASSEMBLY



BELL HOUSING ASSEMBLY

REF. NO.	PART NO.	SYM.	QTY.	DESCRIPTION
27	18-32665		1	COTTER PIN, INTERMEDIATE SHIFT SHAFT RETAINING
28	12-32666		1	WASHER, INTERMEDIATE SHIFT SHAFT
29	45518A1		1	LEVER ASSEMBLY, UPPER SHIFT SHAFT
30	12-39116		1	WASHER, UPPER SHIFT LEVER
31	10-45590		1	SCREW, UPPER SHIFT LEVER TO SHIFT SHAFT (1 1/16")

DRIVE SHAFT HOUSING ASSEMBLY AND GEAR ASSEMBLY

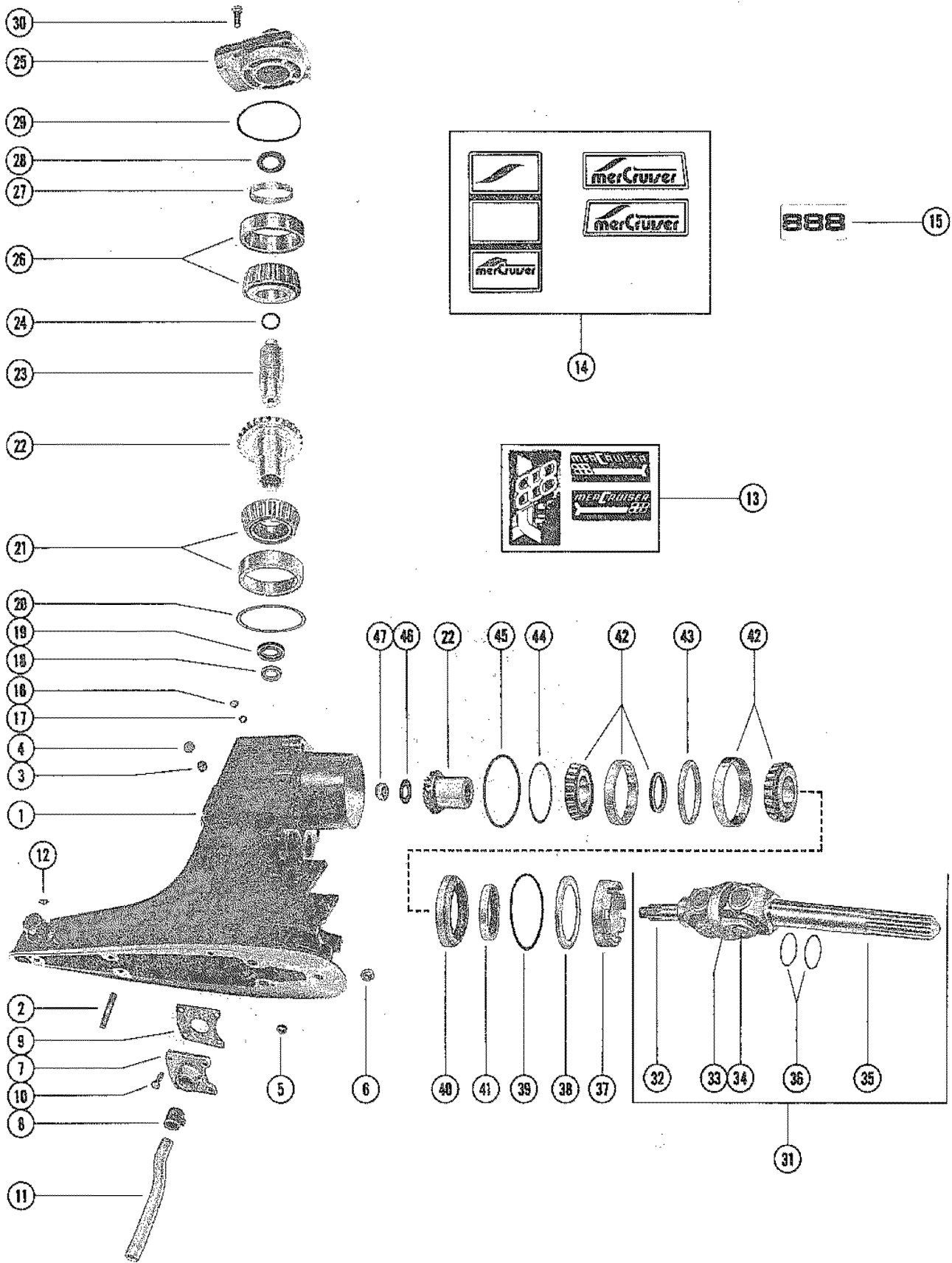


DRIVE SHAFT HOUSING ASSEMBLY AND GEAR ASSEMBLY

REF. NO.	PART NO.	SYM.	QTY.	DESCRIPTION
1	1547-5523A18		1	DRIVE SHAFT HOUSING ASSEMBLY
2	16-56295		2	,STUD,DRIVE SHAFT HOUSING TO GEAR HOUSING (2 11/16")
3	22-31704		1	PLUG, PIPE - DRIVE SHAFT HOUSING (WATER POCKET)
4	19-32652		1	WELCH PLUG, DRIVE SHAFT HOUSING
5	23-32632		1	BUSHING, DRIVE SHAFT HOUSING
6	11-34933		3	NUT, GEAR HOUSING TO DRIVE SHAFT HOUSING STUD
7	54235A2		1	COVER ASSEMBLY, WATER POCKET COVER
8	26-36557		1	SEAL, RUBBER - WATER POCKET COVER
9	27-55810		1	GASKET, WATER POCKET COVER
10	10-28668		4	SCREW, WATER POCKET COVER TO DRIVE SHAFT HOUSING (7/8")
11	32-54236		1	TUBE, WATER - WATER POCKET COVER
12	19-32298		1	PLUG, TRIM TAB HOLE - DRIVE SHAFT HOUSING
13	37-60879A1		1	DECAL SET, DRIVE SHAFT HOUSING SERIAL 00000000-04009299
	37-69447A1		1	DECAL SET, DRIVE SHAFT HOUSING SERIAL 04009300-04193999
	37-70658A1		1	DECAL SET, DRIVE SHAFT HOUSING SERIAL 00419400-04634109
14	37-76731A1		1	DECAL SET, DRIVE SHAFT HOUSING SERIAL 04634110-09999999
15	37-76752		1	DECAL, DRIVE SHAFT HOUSING "888" SERIAL 04634110-09999999
16	10-28634		1	SCREW, DRIVE SHAFT HOUSING GREASE FILLER AND VENT HOLE
17	12-20260		1	WASHER, DRIVE SHAFT HOUSING GREASE FILLER AND VENT HOLE SCRE
18	26-37259		1	OIL SEAL, DRIVE SHAFT HOUSING - LOWER
19	26-32511		1	OIL SEAL, GEAR CHAMBER - DRIVE SHAFT HOUSING
20	15-36178A1		AR	SHIM, BEARING CUP TO DRIVE SHAFT HOUSING (.002-3-10-15
21	31-35990A1		1	TAPERED ROLLER BEARING ASSEMBLY, PINION GEAR
22	43-59832A2		1	GEAR ASSEMBLY, COMPLETE (20-22 GEAR RATIO)
23	45-55796		1	DRIVE SHAFT, UPPER
24	25-55801		1	"O" RING, UPPER DRIVE SHAFT
25	55758		1	COVER, TOP - DRIVE SHAFT HOUSING SERIAL 00000000-03248347
26	31-32575A1		1	BEARING ASSEMBLY, DRIVE SHAFT SERIAL 00000000-03248347
27	23-55798		1	SPACER,UPPER DRIVE SHAFT SERIAL 00000000-03248347
28	24-55797		1	SPRING, UPPER DRIVE SHAFT (TOP COVER) SERIAL 00000000-03248347
25	61102A1		1	COVER ASSEMBLY, TOP - DRIVE SHAFT SERIAL 03248348-03472477
26	31-61100A1		1	BEARING ASSEMBLY, DRIVE SHAFT SERIAL 03248348-03472477
28	24-55797		1	SPRING, UPPER DRIVE SHAFT (TOP COVER) SERIAL 03248348-03472477

CONTINUED ON NEXT PAGE ➡

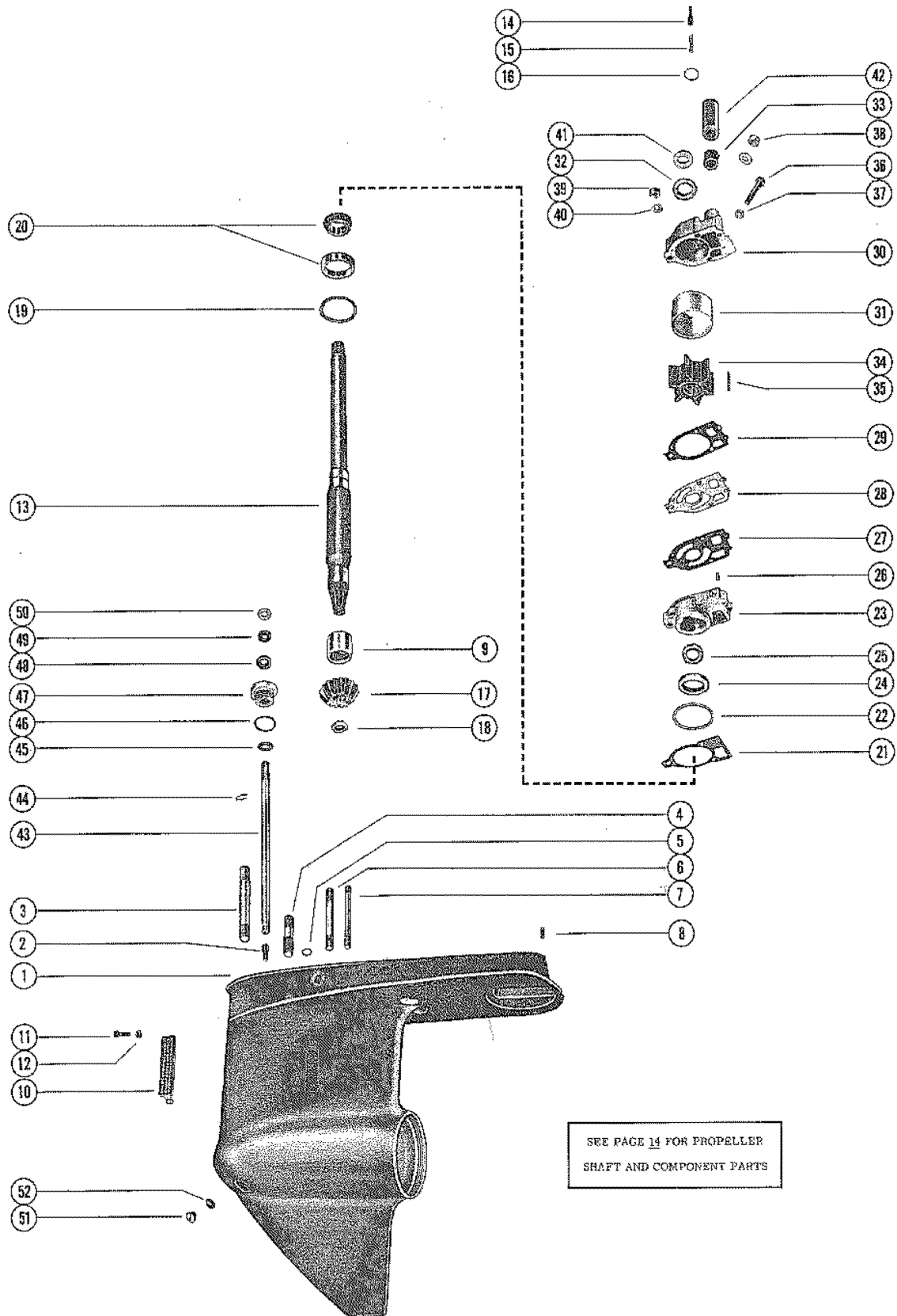
DRIVE SHAFT HOUSING ASSEMBLY AND GEAR ASSEMBLY



DRIVE SHAFT HOUSING ASSEMBLY AND GEAR ASSEMBLY

REF. NO.	PART NO.	SYM.	QTY.	DESCRIPTION
25	62266A1		1	COVER ASSEMBLY, TOP - DRIVE SHAFT HOUSING SERIAL 03472478-04433199
26	31-61100A1		1	BEARING ASSEMBLY, DRIVE SHAFT SERIAL 03472478-04433199
28	15-45691A1		AR	SHIM, BEARING CUP TO TOP COVER SERIAL 03472478-04433199
25	76098A1		1	COVER ASSEMBLY, TOP - DRIVE SHAFT HOUSING SERIAL 04433200-09999999
26	31-61100A1		1	BEARING ASSEMBLY, DRIVE SHAFT SERIAL 04433200-09999999
28	15-45691A1		AR	SHIM, BEARING CUP TO TOP COVER SERIAL 04433200-09999999
29	25-32546		1	"O" RING, TOP COVER SEALING
30	10-58640		4	SCREW, TOP COVER TO DRIVE SHAFT HOUSING (1 1/4")
31	59829A1		1	UNIVERSAL JOINT ASSEMBLY, DRIVE GEAR
32	46020		1	YOKE, UNIVERSAL JOINT - GEAR END
33	39383		1	SOCKET, CENTER - UNIVERSAL JOINT
34	58749		2	CROSS AND BEARING ASSEMBLY, UNIVERSAL JOINT
35	59830A1		1	YOKE ASSEMBLY, UNIVERSAL JOINT - COUPLING END
36	25-25439		2	"O" RING, UNIVERSAL JOINT
37	66071		1	RETAINER, TAPERED ROLLER BEARING - UNIVERSAL JOINT
38	35983		1	RING, ROLLER BEARING RETAINER TO OIL SEAL CARRIER
39	25-70937		1	"O" RING, OIL SEAL CARRIER
40	35993A1		1	CARRIER ASSEMBLY, OIL SEAL SERIAL 00000000-03784374
	66081A2		1	CARRIER ASSEMBLY, OIL SEAL SERIAL 03784375-09999999
41	26-68493		1	OIL SEAL, CARRIER
42	31-35988A2		1	TAPERED ROLLER BEARING ASSEMBLY, DRIVE GEAR
43	23-35985		1	SPACER, DRIVE GEAR ROLLER BEARING CUPS
44	15-35980A1		AR	SHIM, BEARING CUP TO DRIVE SHAFT HOUSING (.002-3-5-15
45	15-71013		1	SHIM, BEARING CUP TO DRIVE SHAFT HOUSING
46	12-45810		1	WASHER, DRIVE GEAR TO UNIVERSAL JOINT NUT
47	11-22339		1	NUT, DRIVE GEAR TO UNIVERSAL JOINT

GEAR HOUSING ASSEMBLY, COMPLETE

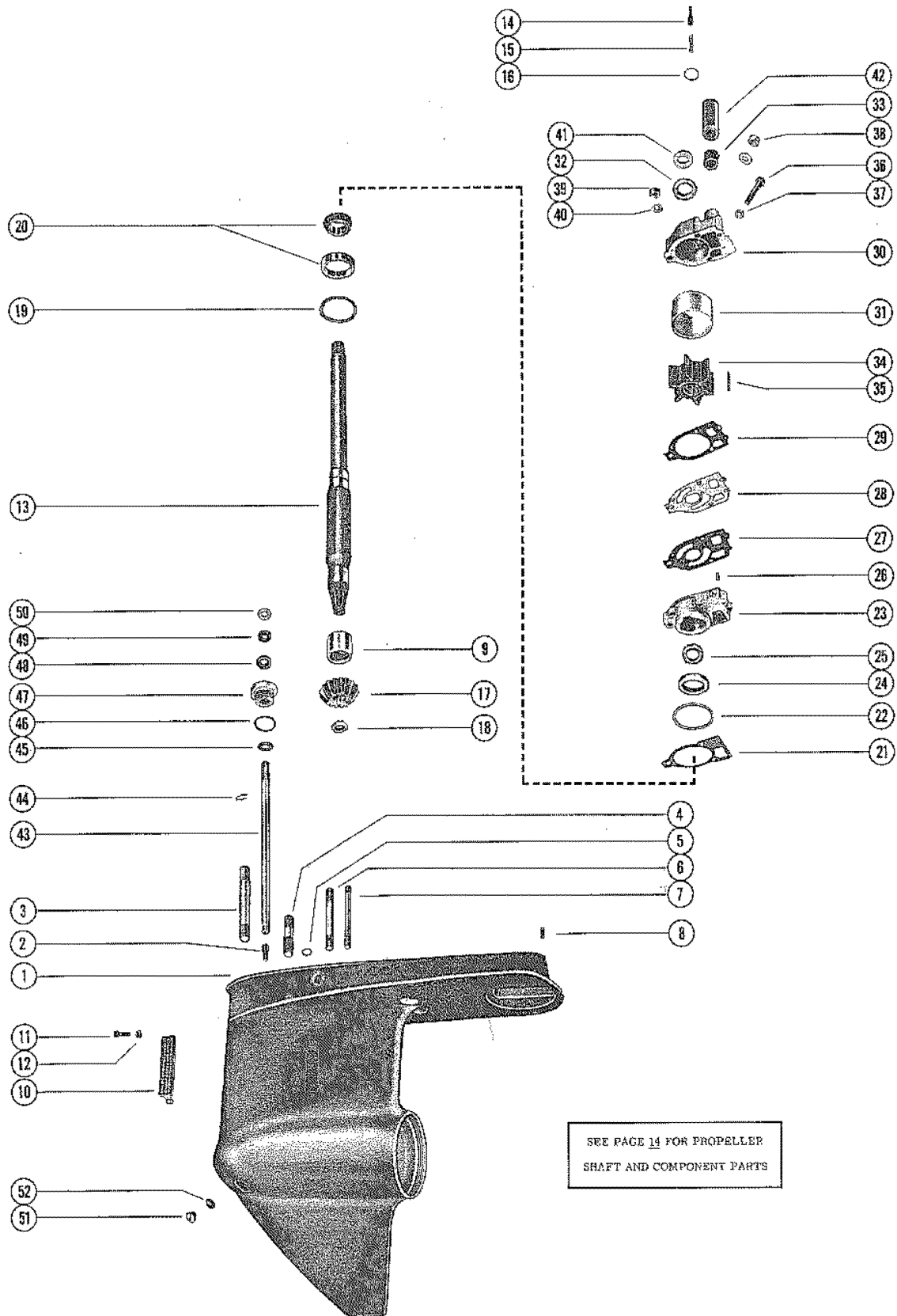


GEAR HOUSING ASSEMBLY, COMPLETE

REF. NO.	PART NO.	SYM.	QTY.	DESCRIPTION
-	1623-4110A6		1	GEAR HOUSING ASSEMBLY, COMPLETE B-1623-4110A6, A13 AND B-1623-5356A3 GEAR HOUSING ASSEMBLY, COMPLETE, INCLUDES ALL PARTS FROM REFERENCE #1 THRU #79 AS LISTED ON PAGES AND 14 SERIAL 00000000-03784374
-	1623-4110A13		1	GEAR HOUSING ASSEMBLY, COMPLETE SERIAL 03784375-03909577
-	1623-5356A3		1	GEAR HOUSING ASSEMBLY, COMPLETE SERIAL 03909578-09999999
1	1623-4110A3		1	GEAR HOUSING ASSEMBLY SERIAL 00000000-03909577
	1623-5356A4		1	GEAR HOUSING ASSEMBLY SERIAL 03909578-09999999
2	17-37972		1	PIN, SHIFT CRANK - GEAR HOUSING
3	16-46911		1	STUD, GEAR HOUSING TO DRIVE SHAFT HOUSING (3 3/16")
4	16-56298		2	STUD, GEAR HOUSING TO DRIVE SHAFT HOUSING (1 31/32")
5	26-45577		1	SEAL, GEAR HOUSING
6	16-56297		1	STUD, WATER PUMP BASE AND BODY TO GEAR HOUSING (3 3/8")
7	16-69501		2	STUD, WATER PUMP BASE AND BODY TO GEAR HOUSING (3 1/4")
8	17-46912		2	PIN, DOWLE - GEAR HOUSING TO DRIVE SHAFT HOUSING
9	31-35934		1	BEARING, ROLLER - DRIVE SHAFT
10	66884		1	INSERT, WATER PICKUP (STARBOARD SIDE) SERIAL 03909578-09999999
	66885		1	INSERT, WATER PICKUP (STARBOARD SIDE) SERIAL 03909578-09999999
11	10-76156		1	SCREW, INSERT TO GEAR HOUSING (1 7/8") SERIAL 03909578-09999999
12	11-45812		1	NUT, INSERT SCREW SERIAL 03909578-09999999
13	45-55757A1		1	DRIVE SHAFT ASSEMBLY
14	17-30545		1	PIN, DRIVE SHAFT
15	24-34576		1	SPRING, COMPRESSION - DRIVE SHAFT
16	25-30613		1	"O" RING, UPPER - DRIVE SHAFT
17	43-61027		1	GEAR, PINION - DRIVE SHAFT
18	11-35921		1	NUT, PINION GEAR TO DRIVE SHAFT
19	15-57007A1		AR	SHIM, DRIVE SHAFT BEARING TO GEAR HOUSING (.002-3-5-10-20)
20	31-53079A1		1	TAPERED ROLLER BEARING ASSEMBLY, DRIVE SHAFT
21	27-33146		1	GASKET, WATER PUMP BASE TO GEAR HOUSING
22	25-33145		1	"O" RING, WATER PUMP BASE
23	46-57234A1		1	WATER PUMP BASE ASSEMBLY
24	26-33144		1	OIL SEAL, WATER PUMP BASE
25	26-31507		1	OIL SEAL, WATER PUMP BASE
26	17-35973		2	DOWEL PIN, WATER PUMP BASE TO WATER PUMP BODY
27	27-32433		1	GASKET, LOWER - WATER PUMP BASE TO FACE PLATE

CONTINUED ON NEXT PAGE ➡

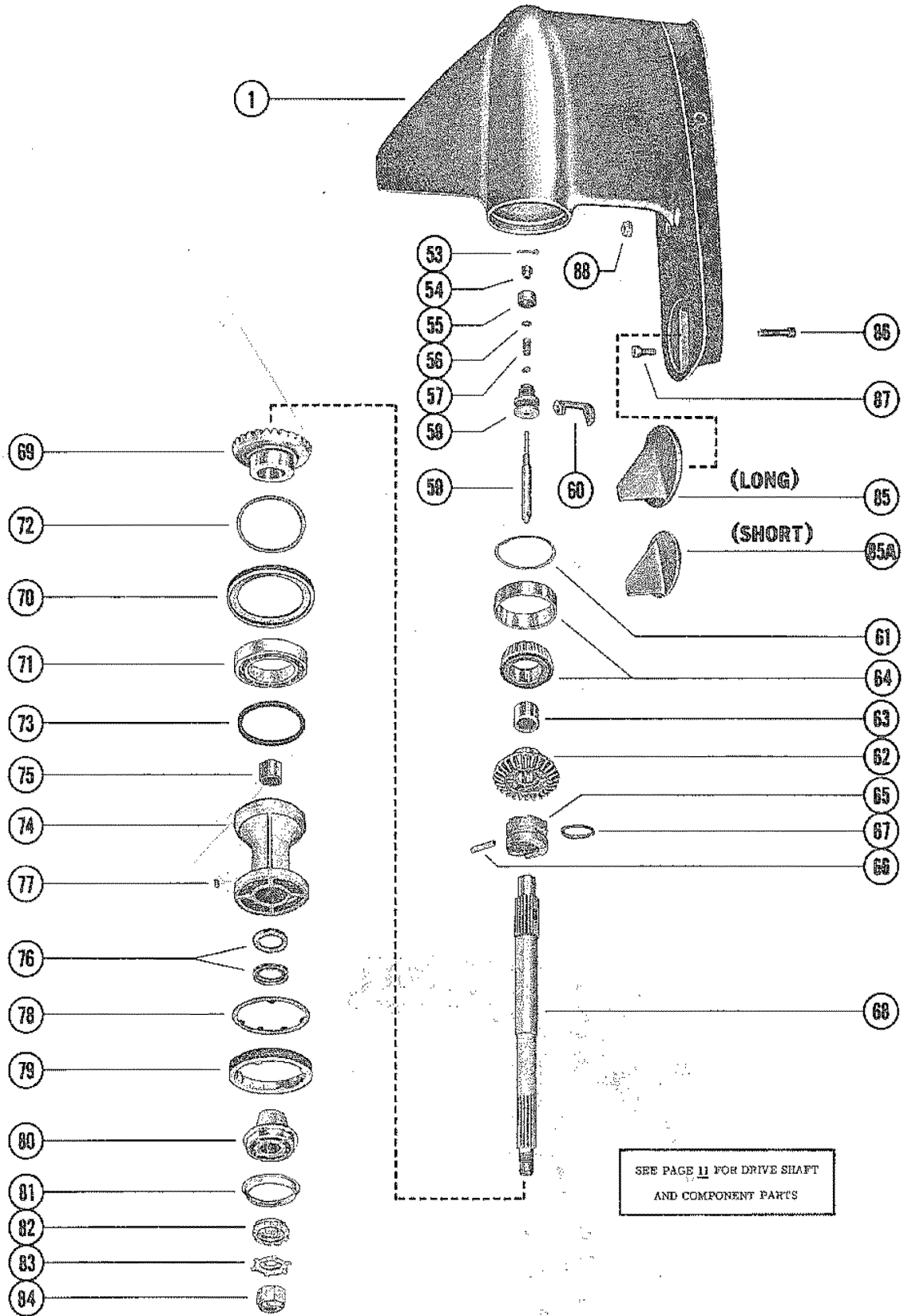
GEAR HOUSING ASSEMBLY, COMPLETE



GEAR HOUSING ASSEMBLY, COMPLETE

REF. NO.	PART NO.	SYM.	QTY.	DESCRIPTION
28	32435		1	PLATE, FACE - WATER PUMP BASE TO WATER PUMP BODY
29	27-32434		1	GASKET, UPPER - FACE PLATE TO WATER PUMP BODY
30	46-48743A1		1	WATER PUMP BODY ASSEMBLY SERIAL 00000000-03784374
	46-64141A1		1	WATER PUMP BODY ASSEMBLY SERIAL 03784375-09999999
31	48752		1	INSERT, WATER PUMP BODY
32	26-31507		1	OIL SEAL, WATER PUMP BODY (EARLY MIDELS ONLY)
33	26-38970		1	SEAL, RUBBER - WATER INLET TUBE
34	47-65960		1	IMPELLER, WATER PUMP
35	28-56654		1	PIN, IMPELLER DRIVE
36	10-30720		1	SCREW, WATER PUMP BODY TO GEAR HOUSING (2 1/4")
37	12-36001		1	WASHER, WATER PUMP BODY SCREW
38	11-35888		2	NUT, WATER PUMP BODY STUDS (1 1/4-28)
39	11-45592		1	NUT, WATER PUMP BODY STUDS (5/16-24)
40	12-29245		3	WASHER, WATER PUMP BODY STUD
41	25-30271		1	RING, RUBBER- CENTRIFUGAL SLINGER (DRIVE SHAFT)
42	23-29804		1	SLEEVE, GUIDE-WATER INLET TUBE
43	65028		1	SHAFT, SHIFT-LOWER SERIAL 00000000-03784374
	66066		1	SHAFT, SHIFT - LOWER SERIAL 03784375-09999999
44	18-20233		1	CLIP RETAINING-SHIFT SHAFT
45	12-27880		1	WASHER, LOWER SHIFT SHAFT AND CRANK
46	25-25439		1	"O"RING, SHIFT SHAFT BUSHING
47	23-30617A2		1	BUSHING ASSEMBLY ,SHIFT SHAFT
48	26-46021		1	OIL SEAL, SHIFT SHAFT BUSHING
49	12-31266		1	WASHER, RUBBER-SHIFT SHAFT BUSHING
50	12-29395		1	WASHER, SHIFT SHAFT
51	10-28634		1	SCREW, GEAR HOUSING GREASE FILLER AND VENT HOLE
52	12-20260		1	WASHER, GEAR HOUSING GREASE FILLER AND VENT HOLE SCREW

GEAR HOUSING ASSEMBLY

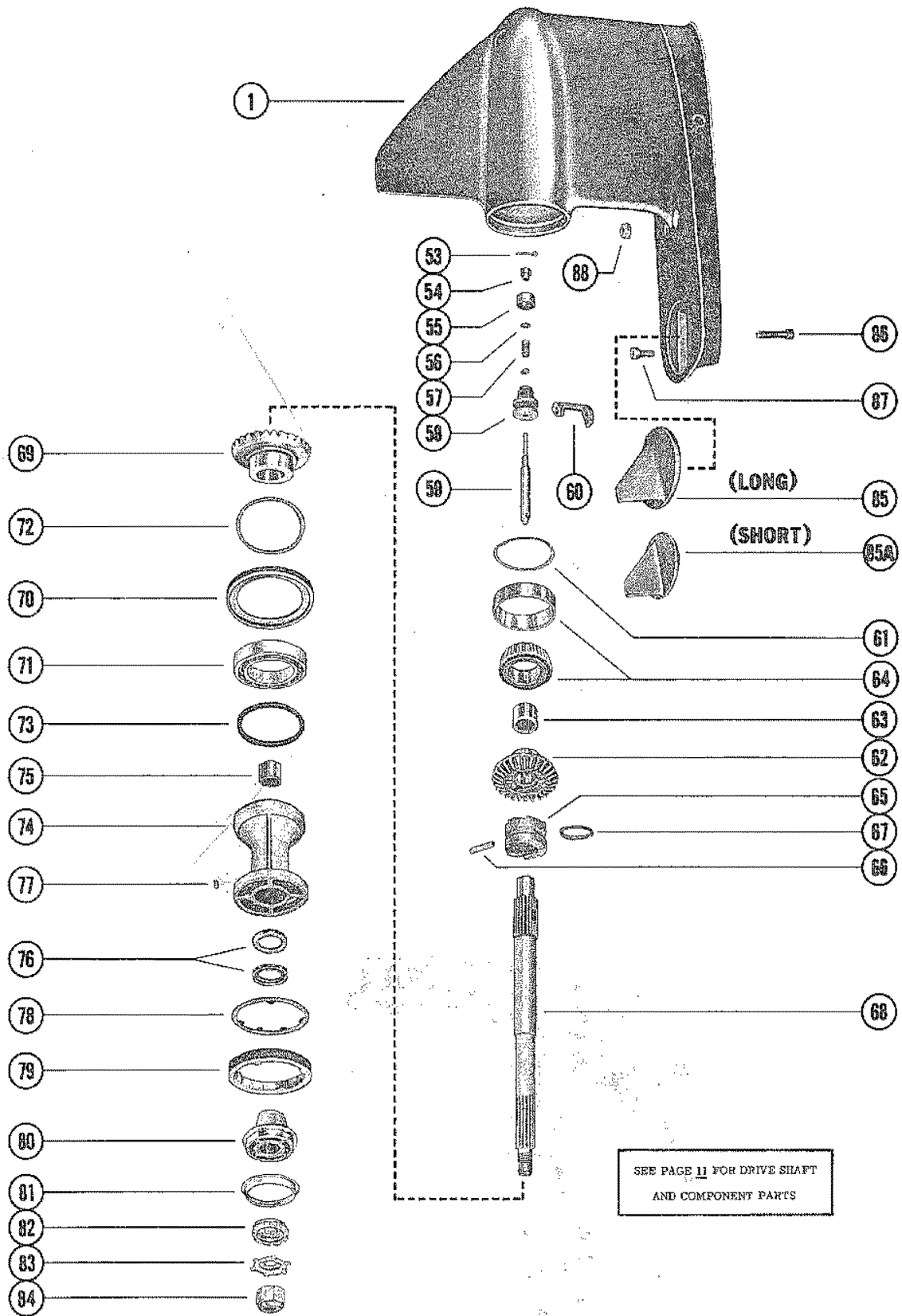


GEAR HOUSING ASSEMBLY

REF. NO.	PART NO.	SYM.	QTY.	DESCRIPTION
-	1623-4110A6		1	GEAR HOUSING SERIAL 00000000-03784374
-	1623-8951A2		1	GEAR HOUSING SERIAL 03784375-09999999
1	1623-5356A4		1	GEAR HOUSING
	18-89212		1	COTTER PIN, CLUTCH ACTUATING SHAFT
54	N.S.S.		1	SLEEVE, ADJUSTING REPLACED BY 19755A4 SERIAL 00000000-03784374
55	N.S.S.		1	RETAINER, SPRING REPLACED BY 19755A4 SERIAL 00000000-03784374
56	N.S.S.		2	WASHER REPLACED BY 19755A4 SERIAL 00000000-03784374
57	N.S.S.		1	SPRING REPLACED BY 19755A2 SERIAL 03784375-09999999
58	N.S.S.		1	SPOOL REPLACED BY 19755A2 SERIAL 03784375-09999999
59	N.S.S.		1	SHAFT REPLACED BY 19755A2 SERIAL 03784375-09999999
60	37966		1	SHIFT CRANK SERIAL 00000000-03784374
	76865		1	SHIFT CRANK SERIAL 03784735-09999999
61	15-47397A1		AR	SHIM
62	43-92158A1		1	FORWARD GEAR
63	31-30895		1	ROLLER BEARING, FORWARD GEAR
64	31-35928A1		1	TAPERED ROLLER BEARING ASSEMBLY
65	52-37963		1	CLUTCH SERIAL 00000000-03784374
	52-66063		1	CLUTCH SERIAL 03784375-09999999
66	17-30632		1	CROSS PIN
67	24-30893		1	SPRING, RETAINER-CROSS PIN
68	44-66060		1	PROPELLER SHAFT
69	43-61026		1	REVERSE GEAR
70	35915		1	THRUST RING, BEARING CARRIER
71	30-17927		1	BALL BEARING, REVERSE GEAR
72	15-31535A1		AR	SHIM
73	25-31534		1	O-RING, BEARING CARRIER
74	73020A14		1	BEARING CARRIER ASSEMBLY
75	31-30956		1	ROLLER BEARING
76	26-76868		2	OIL SEAL
77	28-30281		1	KEY
78	14-79447		1	TAB WASHER, GEAR HOUSING COVER
79	79448		1	COVER, GEAR HOUSING
80	56292A2		1	THRUST HUB AND WASHER ASSEMBLY
81	12-35965		1	WASHER, CUPPED
82	12-31211A2		1	WASHER, SPLINED - PROPELLER SHAFT
83	14-31210		1	TAB WASHER, PROPELLER NUT
84	11-52707A1		1	PROPELLER NUT

CONTINUED ON NEXT PAGE ➡

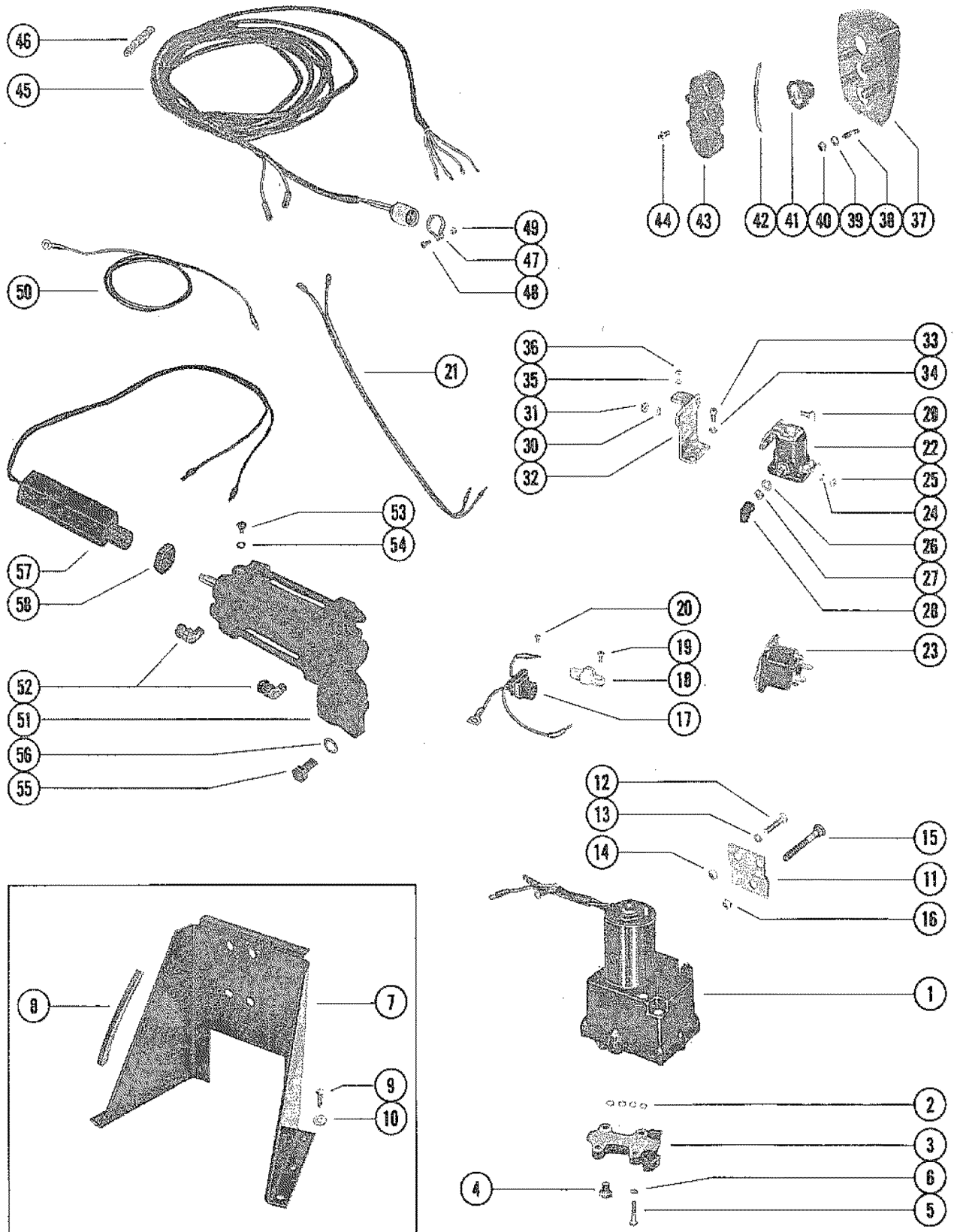
GEAR HOUSING ASSEMBLY



GEAR HOUSING ASSEMBLY

REF. NO.	PART NO.	SYM.	QTY.	DESCRIPTION
85	34127A1		1	TRIM TAB ASSEMBLY SERIAL 00000000-04433199
	31640A1		1	TRIM TAB ASSEMBLY SERIAL 04433200-09999999
86	10-32470		1	SCREW, TRIM TAB TO GEAR HOUSING (1-3/4")
87	10-30206		1	SCREW, GEAR HOUSING TO DRIVE SHAFT HOUSING (1")
88	11-34933		2	NUT, DRIVE SHAFT HJOUSING TO GEAR HOUSING STUD)

HYDRAULIC PUMJJP AND TRIM INDICATOR CONTROL PANEL

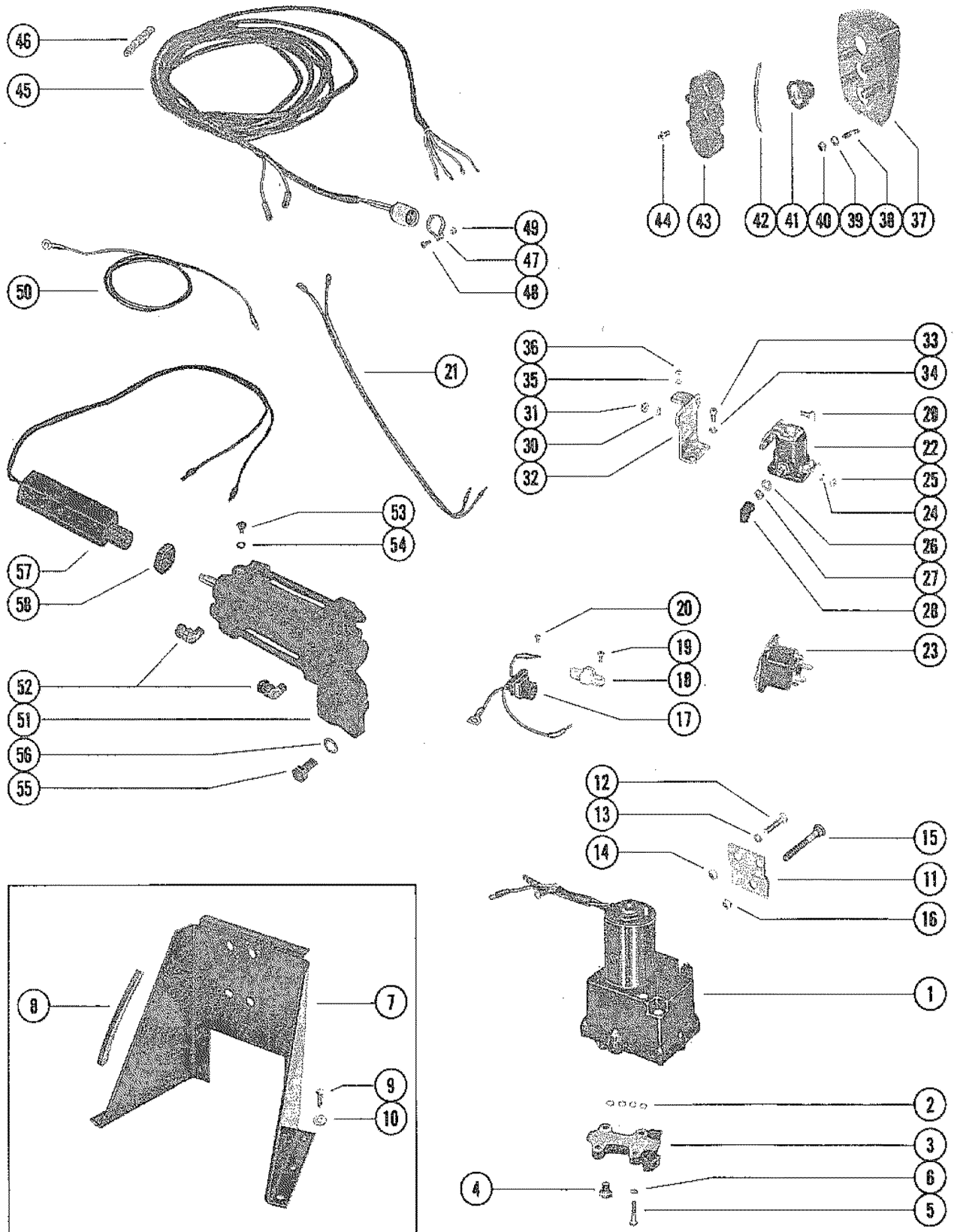


HYDRAULIC PUMJJP AND TRIM INDICATOR CONTROL PANEL

REF. NO.	PART NO.	SYM.	QTY.	DESCRIPTION
1	74436A9		1	HYDRAULIC PUMP ASSEMBLY
2	25-26834		4	"O"RING, HYDRAULIC PUMP TO CONTROL VALVE
3	48077A3		1	CONTROL VOALVE ASSEMBLY
-	25-26834		4	"O"RING, HYDRAULIC PUMP TO CONTROL VALVE (SEE REFERENCE #2)
4	22-38609		1	PLUG, CONROL VALVE
5	10-21091		4	SCREW, CONTROL VALVE TO GYDRAULIC PUMP (1 1/8")
6	13-26992		4	LOCKWASHER, CONTROL VALVE SCREW
7	58397A3		1	BRACKET ASSEMBLY, MOUNTING- HYDRAULIC PUMP (FLOOR MOUNTING)
8	58491		2	BUMPER, RUBBER-MOUNTING BRACKET
9	10-59784		6	SCREW, PUMP MOUNTING BRACKET ATTACHING (1")
10	12-29245		6	WASHER, PUMP MOUNTING BRACKET
11	45377		2	BRACKET, MOUNTING- HYDRAULIC PUMP (TRANSOM MOUNTING)
12	10-24234		4	SCREW, HYDRAULIC PUMP TO MOUNTING BRACKET (1")
13	13-39107		4	LOCKWASHER, HYDRAULIC PUMP SCREW
14	11-21908		4	NUT, HYDRAULIC PUMP SCREW
15	10-28009		2	SCREW, PUMP MOUNTING BRACKET TO TRANSOM (3 1/4")
16	11-35304		2	NUT, PUMP MOUNTING BRACKET SCREW
17	45325		1	CONNECTOR AND HARNESS (GREEN LEAD 3" LONG)
	84-74023		1	CONNECTORAND HARNESS (GREEN LEAD 5 1/2" LONG)
18	45559		1	TERMINAL BLOCK, HYDRAULIC PUMP
19	10-35519		2	SCREW, TERMINAL BLOCK (1/2")
20	10-62568		2	SCREW, HARNESS LEADS TO TERMINAL BLOCK (3/8")
21	57756		1	WIRING HARNESS, HYDRAULIC PUMP
22	25661		1	STARTER SOLENOID SEE PHOTO FOR CORRECT SOLENOID REPLACEMENT
	89-68258		1	STARTER SOLENOID SEE PHOTO FOR CORRECT SOLENOID REPLACEMENT
24	13-26996		2	LOCKWASHER, STARTER SOLENOID TERMINAL (#10)
25	11-20645		2	NUT, STARTER SOLENOID TERMINAL (#10)
26	13-26993		2	LOCKWASHER, STARTER SOLENOID TERMINAL (5/16")
27	11-20083		2	NUT, STARTER SOLENOID TERMINAL (5/16"-24)
	11-68292		2	NUT, STARTER SOLENOID TERMINAL (5/16"-18)
28	46265		2	BOOT, RUBBER- STARTER SOLENOID TERMINAL
29	10-34290		2	SCREW,STARTER SOLENOID TO MOUNTING BRACKET (5/8")
	10-69052		2	SCREW, STARTER SOLENOID TO MOUNTING BRACKET (1/2")
30	13-26992		2	LOCKWASHER, STARTER SOLENOID SCREW
31	11-21825		2	NUT, STARTER SOLENOID SCREW
32	74407		1	BRACKET, MOUNTING - STARTER SOLENOID
33	10-21140		2	SCREW, MOJNTING BRACKET TO HYDRAUYLIC PUMP (1/2")
34	13-26992		2	LOCKWASHER, MOUNTING BRACKET SCREW
35	13-27660		1	LOCKWASHER, HYDRAULIC PUMP TRU BOLT

CONTINUED ON NEXT PAGE ➡

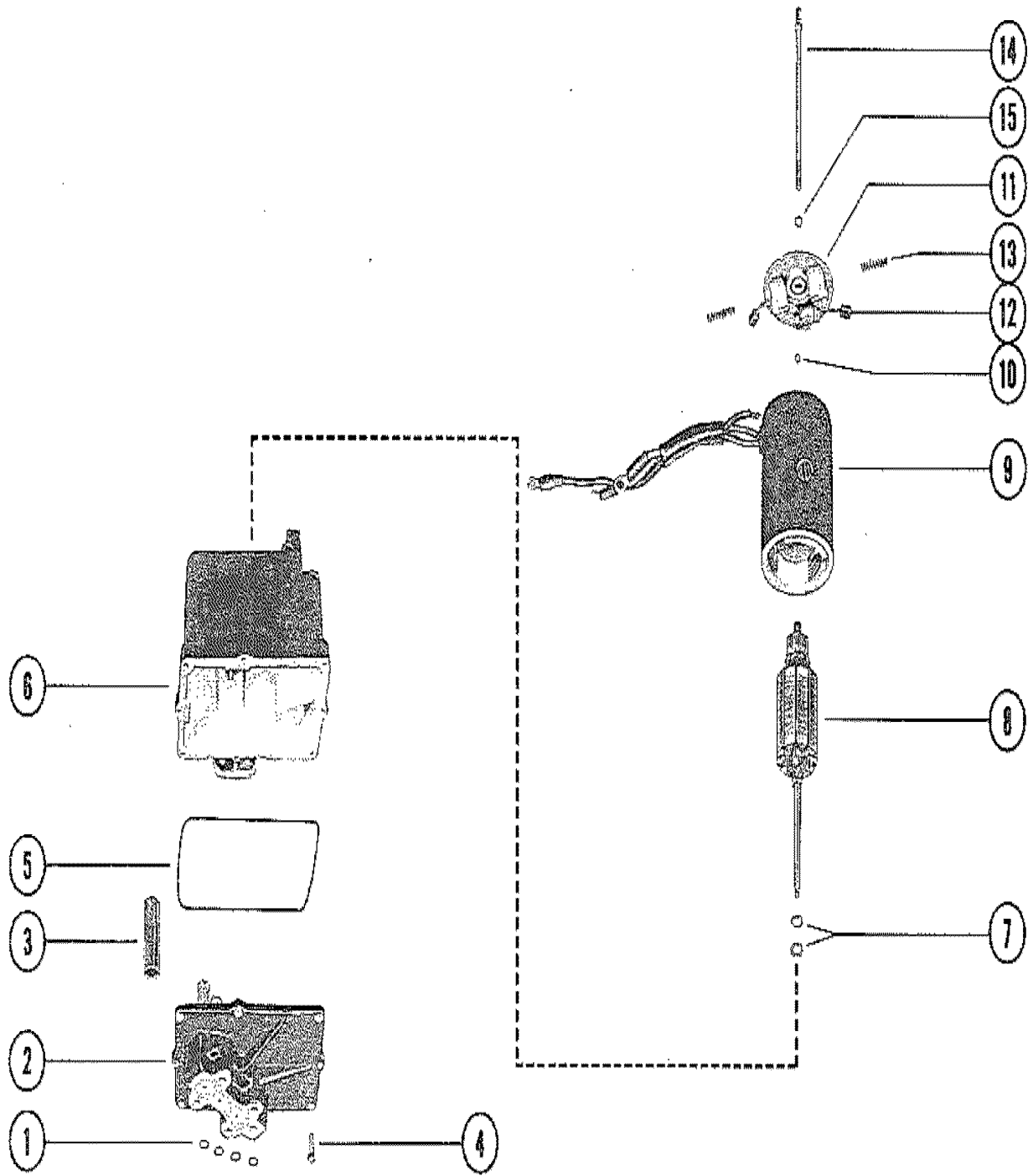
HYDRAULIC PUMJJP AND TRIM INDICATOR CONTROL PANEL



HYDRAULIC PUMJJP AND TRIM INDICATOR CONTROL PANEL

REF. NO.	PART NO.	SYM.	QTY.	DESCRIPTION
36	11-24656		1	NUT, MOUNTING BRACKET TO HYDRAULIC PUMP THRU BOLT
-	55642A7		1	CONTROL PANEL ASSEMBLY, COMPLETE
37	55642A1		1	PANEL ASSEMBLY, CONTROL
38	16-55422		4	STUD, CONTROL PANEL TO BOAT (2")
39	12-24676		4	WASHER, CONTROL PANEL STUD
40	11-27164		4	NUT, CONTROL PANEL STUD
41	55738A1		3	SWITCH, PUSH BUTTON - CONTROL PANEL
42	48078		1	JUMPER WIRE, PUSH BUTTON SWITCH (RED- 3 1/4")
	53107		1	JUMPER WIRE, PUSH BUTTON SWITCH (PURPLE-3")
43	55641		1	RETAINER, PUSH BUTTON SWITCH
44	10-30663		4	SCREW, SWITCH RETAINER TO CONTROL PANEL (1/2")
45	45341-20		1	HARNESS, CONTROL PANEL
46	33865		1	BINDER, NYLON- CONTROL PANEL HARNESS
47	54-46770		1	CLAMP, HARNESS ATTACHING
48	10-29227		1	SCREW, HARNESS ATTACHING CLAMP (1/2")
49	11-34388		1	NUT, HARNESS ATTACHING CLAMP SCREW
50	84-61109		1	BATTERY LEAD (POSITIVE)
	84-61110		1	BATTERY LEAD (NEGATIVE)
51	48170A4		1	SENDER ASSEMBLY, TRIM INDICATOR (B-25-48177A1 SEALING RING KIT) WITHOUT GIMBAL TRIM SENDER
52	22-48169		2	ELBOW, HYDRAULIC HOSE TO TRIM INDICATOR SENDER WITHOUT GIMBAL TRIM SENDER
53	10-45265		2	SCREW, BLEED - TRIM INDICATOR SENDER (5/16") WITHOUT GIMBAL TRIM SENDER
54	25-45016		2	"O"RING, BLEED SCREW WITHOUT GIMBAL TRIM SENDER
55	10-25038		2	SCREW, TRIM INDICATOR SENDER TO TRANSOM (7/8") WITHOUT GIMBAL TRIM SENDER
56	13-21804		2	LOCKWASHER, TRIM INDICATOR SENDER SCREW WITHOUT GIMBAL TRIM SENDER
57	56046A1		1	TRIM SENDER ASSEMBLY WITHOUT GIMBAL TRIM SENDER
58	11-37984		1	NUT, TRIM SENDER WITHOUT GIMBAL TRIM SENDER

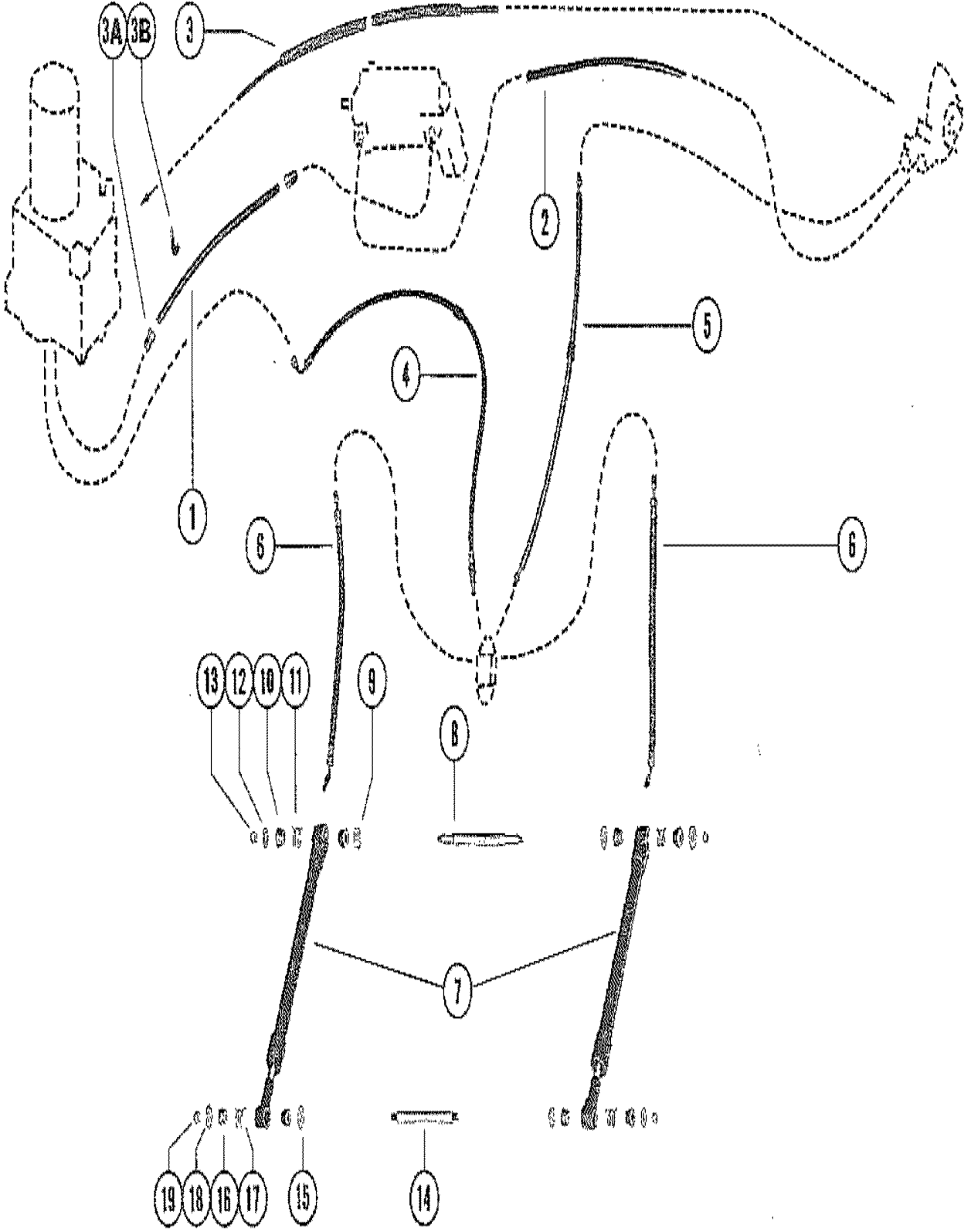
HYDRAULIC PUMP ASSEMBLY, COMPLETE



HYDRAULIC PUMP ASSEMBLY, COMPLETE

REF. NO.	PART NO.	SYM.	QTY.	DESCRIPTION
-	74436A9		1	HYDRAULIC PUMP ASSEMBLY, COMPLETE
1	25-26834		4	"O"RING, HYDRAULIC PUMP
2	392-2936		1	VALVE BODY AND GEAR ASSEMBLY
3	392-2618		1	CAM, VALVE BODY
4	10-20411		8	SCREW, VALVE BODY TO RESERVOIR (5/8")
5	392-2937		1	SEAL, RESERVOIR TO VALVE BODY AND GEAR
6	392-2939		1	RESERVOIR ASSEMBLY
7	392-2623		AR	WASHER, THRUST - ARMATURE
8	392-2943		1	ARMATURE, FIELD AND FRAME
9	392-2942		1	FIELD AND GRAME ASSEMBLY
10	392-2944		1	BALL, COMMUTATOR END PLATE
11	392-2940		1	PLATE ASSEMBLY, COMMUTATOR END
12	392-2941		1	BRUSH SET, COMMUTATOR END PLATE
13	392-2529		1	SPRING SET, BRUSH TENSION
14	392-2938		1	BOLT SET, THRU- PLATE AND FRAME TO RESERVOIR
15	13-26996		2	LOCKWASHER, TRU BOLT

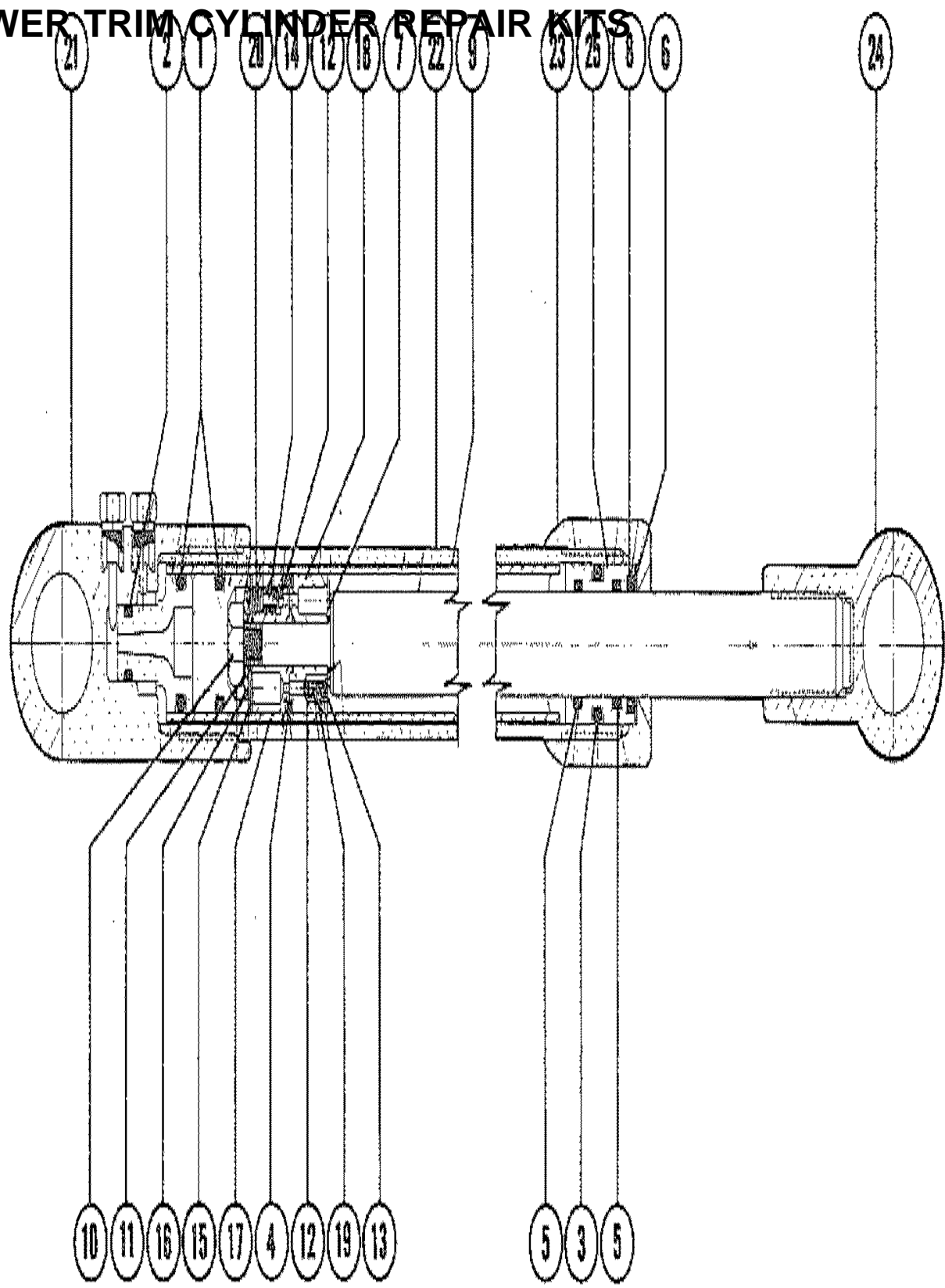
TRIM CYLINDERS AND HYDRAULIC HOSES



TRIM CYLINDERS AND HYDRAULIC HOSES

REF. NO.	PART NO.	SYM.	QTY.	DESCRIPTION
1	32-58432A2		1	TUBING, HYDRAULIC PUMP TO TRIM SENDER (BLACK-49") WITHOUT GIMBAL TRIM SENDER
2	32-52951A1		1	TUBING, TRIM SENDER TO REVERSE LOCK VALVE (BLACK-31") WITHOUT GIMBAL TRIM SENDER
3	32-58432A2		1	TUBING, HYDRAULIC PUMP TO VALVE (WITH GIMBAL TRIM SENDER)
3A	22-49718		2	NUT, COMPRESSION - HYDRAULIC TUBE ATTACHING
3B	54-38863		1	CLAMP,HOSE
4	32-59841		1	HOSE, HYDRAULIC - CONNECTOR TO REVERSE LOCK VALVE (44")
5	32-59842		1	HOSE, HYDRAULIC - CONNECTOR TO TRIM SENDER (29 1/2")
6	32-47373		4	HOSE, HYDRAULIC - CONNECTOR TO TRIM CYLINDER (12 1/2") SERIAL 00000000-03784374
	32-68676		4	HOSE, HYDRAULIC - CONNECTOR TO TRIM CYLINDER (12 1/2") SERIAL 00000000-03784375
7	45706A8		2	TRIM CYLINDER ASSEMBLY, COMPLETE SEE PAGE 19 FOR REPAIR KIT
-	45522A3		2	PIVOT END REPAIR KIT, TRIM CYLINDER SEE PAGE 19 FOR REPAIR KIT
-	45706A4		2	OUTER TUBE REPAIR KIT, TRIM CYLINDER SEE PAGE 19 FOR REPAIR KIT
-	25-60324A2		2	"O"RING REPAIR KIT, TRIM CYLINDER SEE PAGE 19 FOR REPAIR KIT
8	17-45735		1	PIN, FRONT ANCHOR - TRIM CYLINDER TO GIMBAL RING (10 11/32")
9	12-45737		2	WASHER, FRONT ANCHOR PIN
10	23-61290		4	BUSHING, RUBBER - FRONT ANCHOR PIN
11	24-46312		2	SPRING, FRONT ANCHOR PIN
12	12-46765		2	WASHER, FRONT ANCHOR PIN
13	11-34932		2	NUT, FRONT ANCHOR PIN
14	17-45738		1	PIN, REAR ANCHOR - TRIM CYLINDER TO DRIVE XHAFT HOUSING (7 1)
15	12-45737		2	WASHER,REAR ANCHOR PIN
16	23-61290		4	BUSHING, RUBBER - REAR ANCHOR PIN
17	24-46312		2	SPRING, REAR ANCHOR PIN
18	12-46765		2	WASHER, REAR ANCHOR PIN
19	11-34932		2	NUT, REAR ANCHOR PIN

POWER TRIM CYLINDER REPAIR KITS



POWER TRIM CYLINDER REPAIR KITS

REF. NO.	PART NO.	SYM.	QTY.	DESCRIPTION
-	45522A3		1	OVERHAUL KIT
-	25-60342A2		1	"O"RING KIT
1	N.S.S.		2	"O"RING (3/4"X1X5/32")
2	N.S.S.		1	"O"RING (3/8"X9/16"X3/32")
3	N.S.S.		1	"O"RING (7/8"X11/8"X1/8")
4	N.S.S.		1	"O"RING (13/16"X3/32 SQ.)
5	N.S.S.		2	"O"RING (3/4"X15/16"X1/8")
6	N.S.S.		1	WASHER, PLAIN-END CAP
7	N.S.S.		1	WASHER, SEALING
8	N.S.S.		1	ROD SCRAPER
9	N.S.S.		1	TUBE, INNER
10	N.S.S.		1	NUT, PISTON ROD
11	N.S.S.		1	WASHER, PISTON ROD NUT
12	N.S.S.		5	BALL, STEEL
13	N.S.S.		1	SPRING, BY-PASS
14	N.S.S.		4	RIVET, TUBULAR
15	N.S.S.		1	WASHER, SHOCK PISTON
16	N.S.S.		AR	WASHER,SHOCK PISTON
17	N.S.S.		1	PISTON, SHOCK - IMPACT
18	N.S.S.		1	PISTON, SHOCK - RETURN
19	N.S.S.		2	EYELET
20	N.S.S.		4	SPRING, COMPRESSION
-	45706A4		1	TUBE KIT
21	N.S.S.		1	END CAP - GIMBAL RING
22	N.S.S.		1	TUBE, OUTER
23	45523		1	END CAP
24	45522		1	PIVOT END
25	45726		1	BEARING, PISTON ROD

PARTS INDEX

Part Number	Description	Pg.	Ref. No.	Part Number	Description	Pg.	Ref. No.
20007	ANCHOR, SHIFT ACTUATING CABLE END GUIDE	3	22	45515A2	GIMBAL RING ASSEMBLY (WITHOUT GIBAL TRIM SENDER)	9	1
25661	STARTER SOLENOID	31	22	45518A1	LEVER ASSEMBLY, UPPER SHIFT SHAFT	17	29
29359	LUBRICAP, BELL HOUSING GREASE FITTING	15	18	45522	PIVOT END	39	24
29359	LUBRICAP, GIMBAL HOUSING GREASE FITTING	5	9	45522A3	OVERHAUL KIT	39	-
29359	LUBRICAP, GIMBAL RING GREASE FITTING	9	6	45522A3	PIVOT END REPAIR KIT, TRIM CYLINDER	37	-
29880	GUIDE, SHIFT ACTUATING CABLE END	3	21	45523	END CAP	39	23
31014	BUMPER, BELL HOUSING	15	6	45559	TERMINAL BLOCK, HYDRAULIC PUMP	31	18
31640A1	TRIM TAB ASSEMBLY	29	85	45589A1	SHAFT ASSEMBLY, SHIFT - UPPER	15	25
31899	PLATE, RETAINING - SWITCH TO GIMBAL RING	9	11	45706A4	OUTER TUBE REPAIR KIT, TRIM CYLINDER	37	-
32435	PLATE, FACE - WATER PUMP BASE TO WATER PUMP BODY	25	28	45706A4	TUBE KIT	39	--
32517	COVER, WATER TUBE SEALING BUSHING - GIMBAL HOUSING	7	38	45706A8	TRIM CYLINDER ASSEMBLY, COMPLETE	37	7
32582	SHAFT, UPPER SWIVEL (WITHOUT GIMBAL TRIM SENDER)	11	25	45726	BEARING, PISTON ROD	39	25
32628	SHAFT, SHIFT - INTERMEDIATE	15	26	45942A1	TILT STOP SWITCH ASSEMBLY, GIMBAL RING	9	9
32637	STRAP, TILT STOP SWITCH RETAINING	9	13	46020	YOKE, UNIVERSAL JOINT - GEAR END	21	32
32734	BELLOWS, EXHAUST - BELL HOUSING TO GIMBAL HOUSING	15	23	46265	BOOT, RUBBER- STARTER SOLENOID TERMINAL	31	28
33865	BINDER, NYLON- CONTROL PANEL HARNESS	33	46	46734A1	BELL HOUSING ASSEMBLY	15	1
33981	SLIDE, SHIFT ACTUATING CABLE	3	26	47347	CONNECTOR, HYDRAULIC - GIMBAL HOUSING	7	42
34127A1	TRIM TAB ASSEMBLY	29	85	48077A3	CONTROL VOALVE ASSEMBLY	31	3
35915	THRUST RING, BEARING CARRIER	27	70	48078	JUMPER WIRE, PUSH BUTTOHN SWITCH (RED- 3 1/4")	33	42
35983	RING, ROLLER BEARING RETAINER TO OIL SEAL CARRIER	21	38	48170A4	SENDER ASSEMBLY, TRIM INDICATOR	33	51
35993A1	CARRIER ASSEMBLY, OIL SEAL	21	40	48752	INSERT, WATER PUMP BODY	25	31
36223A1	BELLOWS ASSEMBLY, UNIVERSAL JOINT	15	19	49343	LEVER, ACTUATING - GIMBAL RING	9	15
37966	SHIFT CRANK	27	60	49518A1	CABLE ASSEMBLY, SHIFT ACUATING	3	18
38399A2	CORE WIRE ASS'Y, INNER SHIFT CABLE	3	19	53107	JUMJPER WIRE, PUSH BUTTON SWITCH (PURPLE-3")	33	42
38473	WRAPPING, SHIFT ACTUATING CABLE	3	24	54235A2	COVER ASSEMBLY, WATER POCKET COVER	19	7
39383	SOCKET, CENTER - UNIVERSAL JOINT	21	33	54666	STEETING LEVER (USE WITH LINK ROD NOT DRILLED FOR COTTER PIN)	11	24
45325	CONNECTOR AND HARNESS (GREEN LEAD 3" LONG)	31	17	55641	RETAINER, PUSH BUTTON SWITCH	33	43
45341-20	HARNESS, CONTROL PANEL	33	45	55642A1	PANEL ASSEMBLY, CONTROL	33	37
				55642A7	CONTROL PANEL ASSEMBLY, COMPLETE	33	--
				55738A1	SWITCH, PUSH BUTTON - CONTROL PANEL	33	41

PARTS INDEX

Part Number	Description	Pg.	Ref. No.	Part Number	Description	Pg.	Ref. No.
55989	ANODIC HEAD, BOLT ASSEMBLY	7	28	65537	SHAFT, UPPER SWIVEL	11	25
55989A1	BOLT ASSEMBLY, ANONIC - GIMBAL HOUSING TO TRANSOM PLATE	7	27	65545	PLATE, TRANSOM (WITH GIMBAL TRIM SENDER)	3	1
56046A1	TRIM SENDER ASSEMBLY	33	57	65547	PIN, HINGE - THREADED (WITHOUT GREASE GROOVE)	9	7
56292A2	THRUST HUB AND WASHER ASSEMBLY	27	80	66065A1	CABLE ASSEMBLY, SHIFT ACTUATING SERIAL # THRU #	3	18
57008	RETAINER, SWITCH AND SENDER SCREW	11	23	66066	SHAFT, SHIFT - LOWER	25	43
57322	COVER, RETAINING - GIMBAL HOUSING	7	44	66069A2	CORE WIRE ASS'Y, INNER SHIFT CABLE	3	19
57756	WIRING HARNESS, HYDRAULIC PUMP	31	21	66069A2	CORE WIRE ASS'Y, INNER SHIFT CABLE	3	19
58397A3	BRACKET ASSEMBLY, MOUNTING- HYDRAULIC PUMP (FLOOR MOUNTING)	31	7	66071	RETAINER, TAPERED ROLLER BEARING - UNIVERSAL JOINT	21	37
58491	BUMPER, RUBBER- MOUNTING BRACKET	31	8	66081A2	CARRIER ASSEMBLY, OIL SEAL	21	40
58749	CROSS AND BEARING ASSEMBLY, UNIVERSAL JOINT	21	34	66156A6	BELL HOUSING ASSEMBLY (WITHOUT GIMBAL TRIM SENDER)	15	1
59821	PLATE, TRANSOM (WITHOUT GIMBAL TRIM SENDER)	3	1	66388A1	STEERING LINK ROD ASSEMBLY	11	34
59829A1	UNIVERSAL JOINT ASSEMBLY, DRIVE GEAR	21	31	66545	STEERING LEVER (USE WITH LINK ROD DRILLED FOR COTTER PIN)	11	24
59830A1	YOKE ASSEMBLY, UNIVERSAL JOINT - COUPLING END	21	35	66884	INSERT, WATER PICKUP (STARBOARD SIDE)	23	10
60456	LINK ROD, STEERING	11	34	66885	INSERT, WATER PICKUP (STARBOARD SIDE)	23	10
60932A1	BELLOWS ASSEMBLY, UNIVERSAL JOINT	15	19	70862A1	GIMBAL HOUSING ASSEMBLY (WITH GIMBAL TRIM SENDER)	5	1
61075	TOLERANCE RING, GIMBAL HOUSING BEARING	5	17	73020A14	BEARING CARRIER ASSEMBLY	27	74
61102A1	COVER ASSEMBLY, TOP - DRIVE SHAFT	19	25	73679A2	CABLE ASSEMBLY, SHIFT ACTUATING SERIAL # AND UP	3	18
62104	SHAFT, SHIFT - INTERMEDIATE	15	26	74407	BRACKET, MOUNTING - STARTER SOLENOID	31	32
62266A1	COVER ASSEMBLY, TOP - DRIVE SHAFT HOUSING	21	25	74436A9	HYDRAULIC PUMP ASSEMBLY	31	1
63115A2	SWITCH ASSEMBLY, TRIM LIMIT (PORT SIDE)	9	17	74436A9	HYDRAULIC PUMP ASSEMBLY, COMPLETE	35	-
63504A1	GIMBAL HOUSING ASSEMBLY (WITHOUT GIMBAL TRIM SENDER)	5	1	74639	BELLOWS, SHIFT ACTUATING CABLE	7	31
63505A1	BELL HOUSING ASSEMBLY	15	1	75158	TUBE, STEERING CABLE GUIDE (7/8" O.D.)	3	15
63679	BUMPER, BELL HOUSING SENDER, DUMMY (STARBOARD)	9	17	76098A1	COVER ASSEMBLY, TOP - DRIVE SHAFT HOUSING	21	25
65028	SHAFT, SHIFT-LOWER	25	43	76865	SHIFT CRANK	27	60
65533	SEAL, GIMBAL HOUSING TO TRANSOM (WITH GIMBAL TRIM SENDER)	7	40	77123	PIN, HINGE - THREADED (WITH GREASE GROOVE)	9	7
65534A2	GIMBAL RING ASSEMBLY (WITH GIMBAL TRIM SENDER)	9	1	77124A2	GIMBAL RING ASSEMBLY (WITH GIMBAL TRIM SENDER AND GREASE FIT)	9	1
65535A4	BELL ASSEMBLY (WITH GIMBAL TRIM SENDER)	15	1	79448	COVER, GEAR HOUSING	27	79
				N.S.S.	"O"RING (13/16"X3/32 SQ.)	39	4

PARTS INDEX

Part Number	Description	Pg.	Ref. No.	Part Number	Description	Pg.	Ref. No.
N.S.S.	"O"RING (3/4"X15/16"X1/8")	39	5	10-28634	SCREW, DRIVE SHAFT HOUSING GREASE FILLER AND VENT HOLE	19	16
N.S.S.	"O"RING (3/4"X1X5/32")	39	1				
N.S.S.	"O"RING (3/8"X9/16"X3/32")	39	2				
N.S.S.	"O"RING (7/8"X11/8"X1/8")	39	3	10-28634	SCREW, GEAR HOUSING GREASE FILLER AND VENT HOLE	25	51
N.S.S.	BALL, STEEL	39	12				
N.S.S.	END CAP - GIMBAL RING	39	21				
N.S.S.	EYELET	39	19	10-28635	SCREW, COVER TO GIMBAL HOUSING (5/8")	7	45
N.S.S.	NUT, PISTON ROD	39	10				
N.S.S.	PISTON, SHOCK - IMPACT	39	17	10-28635	SCREW, WATER TUBE SEALING COVER TO GIMBAL HOUSING (5/8")	7	39
N.S.S.	PISTON, SHOCK - RETURN	39	18				
N.S.S.	RETAINER,SPRING REPLACED BY 19755A4	27	55	10-28668	SCREW, WATER POCKET COVER TO DRIVE SHAFT HOUSING (7/8")	19	10
N.S.S.	RIVET, TUBULAR	39	14				
N.S.S.	ROD SCRAPER	39	8				
N.S.S.	SHAFT REPLACED BY 19755A2	27	59	10-29227	SCREW, HARNESS ATTACHING CLAMP (1/2")	33	48
N.S.S.	SLEEVE, ADJUSTING REPLACED BY 19755A4	27	54	10-30206	SCREW, GEAR HOUSING TO DRIVE SHAFT HOUSING (1")	29	87
N.S.S.	SPOOL REPLACED BY 19755A2	27	58	10-30663	SCREW, SWITCH RETAINER TO CONTROL PANEL (1/2")	33	44
N.S.S.	SPRING REPLACED BY 19755A2	27	57				
N.S.S.	SPRING, BY-PASS	39	13	10-30720	SCREW, WATER PUMP BODY TO GEAR HOUSING (2 1/4")	25	36
N.S.S.	SPRING, COMPRESSION	39	20				
N.S.S.	TUBE, INNER	39	9				
N.S.S.	TUBE, OUTER	39	22	10-31700	SCREW, SET - SHIFT ACTUATING CABLE TO SLIDE	3	27
N.S.S.	WASHER REPLACED BY 19755A4	27	56				
N.S.S.	WASHER, PISTON ROD NUT	39	11	10-31903	SCREW, ACTUATING LEVER TO GIMBAL RING (3/8")	9	16
N.S.S.	WASHER, PLAIN-END CAP	39	6				
N.S.S.	WASHER, SEALING	39	7	10-32470	SCREW, TRIM TAB TO GEAR HOUSING (1-3/4")	29	86
N.S.S.	WASHER, SHOCK PISTON	39	15				
N.S.S.	WASHER,SHOCK PISTON	39	16	10-32995	SCREW, STEERING LEVER TO UPPER SWIVEL SHAFT (2")	11	30
10-20367	SCREW, SWITCH COVER TO GIMBAL RING (7/16")	9	10				
10-20411	SCREW, VALVE BODY TO RESERVOIR (5/8")	35	4	10-34290	SCREW,STARTER SOLENOID TO MOUNTING BRACKET (5/8")	31	29
10-20518	SCREW, SET - ANCHOR TO SIFT ACTUATING CABLE END GUIDE	3	23	10-35519	SCREW, TERMINAL BLOCK (1/2")	31	19
10-21091	SCREW, CONTROL VALVE TO GYDRAULIC PUMP (1 1/8")	31	5	10-36289	SCREW, TRANSOM PLATE TO ENGINE FLYWHEEL HOUSING (4 3/4")	3	7
10-21140	SCREW, MOJNTING BRACKET TO HYDRAUYLIC PUMP (1/2")	31	33	10-36398	SCREW, PLUG - BELL HOSUING (1/4")	15	16
10-24234	SCREW, HYDRAULIC PUMP TO MOUNTING BRACKET (1")	31	12	10-37268	SCREW, TRANSOM PLATE TO GIMBAL HOUSING (4 1/4")	3	4
10-25038	SCREW, TRIM INDICATOR SENDER TO TRANSOM (7/8")	33	55	10-37269	SCREW, TRANSOM PLATE TO GIMBAL HOUSING (2")	3	3
10-25612	SCREW, DRIVE - BELL HOUSING FLANGE	15	5	10-37978	SCREW, SWITCH AND SENDER TO GIMNAL RING (3/4")	9	21
10-25612	SCREW, DRIVE - GIMBAL HOUSING EXHAUST FLANGE	5	18	10-45265	SCREW, BLEED - TRIM INDICATOR SENDER (5/16")	33	53
10-28009	SCREW, PUMP MOUNTING BRACKET TO TRANSOM (3 1/4")	31	15	10-45590	SCREW, UPPER SHIFT LEVER TO SHIFT SHAFT (1 1/16")	17	31

PARTS INDEX

Part Number	Description	Pg.	Ref. No.	Part Number	Description	Pg.	Ref. No.
10-45862	SCREW, PLATE AND STRAP TO GIMBAL RING (7/8")	9	12	11-34933	NUT, GIMBAL HOUSING STUD	7	35
10-46942	SCREW, HANESS ATTACHING (5/16")	9	19	11-35304	NUT, PUMP MOUNTING BRACKET SCREW	31	16
10-54488	SCREW, LEVER TO LINK ROD	11	35	11-35888	NUT, GIMBAL HOUSING TO HYDRAULIC CONNECTOR STUD	7	43
10-58640	SCREW, TOP COVER TO DRIVE SHAFT HOUSING (1 1/4")	21	30	11-35888	NUT, WATER PUMP BODY STUDS (1 1/4-28)	25	38
10-59784	SCREW, PUMP MOUNTING BRACKET ATTACHING (1")	31	9	11-35921	NUT, PINION GEAR TO DRIVE SHAFT	23	18
10-62568	SCREW, HARNESS LEADS TO TERMINAL BLOCK (3/8")	31	20	11-37984	NUT, JAM - STEERING CABLE GUIDE TUBE	3	16
10-63400	SCREW, HARNESS ATTACHING (5/32")	9	19	11-37984	NUT, TRIM SENDER	33	58
10-66389	SCREW, LEVER TO LINK ROD	11	35	11-45592	NUT, WATER PUMP BODY STUDS (5/16-24)	25	39
10-69052	SCREW, STARTER SOLENOID TO MOUNTING BRACKET (1/2")	31	29	11-45812	NUT, INSERT SCREW	23	12
10-76156	SCREW, INSERT TO GEAR HOUSING (1 7/8")	23	11	11-52707A1	PROPELLER NUT	27	84
11-20083	NUT, STARTER SOLENOID TERMINAL (5/16"-24)	31	27	11-55438	NUT, STEERING LINK ROD	13	39
11-20110	NUT, PLATE AND STRAP SCREW	9	14	11-68292	NUT, STARTER SOLENOID TERMINAL (5/16"-18)	31	27
11-20220	NUT, TRANSOM PLATE TO ENGINE FLYWHEEL HOUSING SCREW	3	12	12-20086	WASHER, STEERING LINK ROD (STEEL)	11	38
11-20509	NUT, STEERING LINK ROD	11	39	12-20086	WASHER, STEERING LINK ROD (STEEL)	13	38
11-20645	NUT, STARTER SOLENOID TERMINAL (#10)	31	25	12-20260	WASHER, DRIVE SHAFT HOUSING GREASE FILLER AND VENT HOLE SCRE	19	17
11-20696	NUT, STEERING LEVER TO UPPER SWIVEL SHAFT SCREW	11	31	12-20260	WASHER, GEAR HOUSING GREASE FILLER AND VENT HOLE SCREW	25	52
11-21825	NUT, STARTER SOLENOID SCREW	31	31	12-20546	WASHER, UPPER SWIVEL SHAFT SCREW	11	33
11-21908	NUT, HYDRAULIC PUMP SCREW	31	14	12-21900	WASHER, GIMBAL HOUSING TO TRANSOM PLATE BOLT	3	13
11-22339	NUT, DRIVE GEAR TO UNIVERSAL JOINT	21	47	12-22248	WASHER, GIMBAL HOUSING STUD	7	34
11-24656	NUT, MOUNTING BRACKET TO HYDRAULIC PUMP THRU BOLT	33	36	12-24676	WASHER, CONTROL PANEL STUD	33	39
11-25599	NUT, UPPER SWIVEL SHAFT	11	27	12-27880	WASHER, LOWER SHIFT SHAFT AND CRANK	25	45
11-27164	NUT, CONTROL PANEL STUD	33	40	12-28421	WASHER, TRANSOM PLATE SCREW	3	8
11-34087	NUT, GIMBAL HOUSING TO TRANSOM PLATE BOLT	3	14	12-29245	WASHER, PUMP MOUNTING BRACKET	31	10
11-34388	NUT, HARNESS ATTACHING CLAMP SCREW	33	49	12-29245	WASHER, WATER PUMP BODY STUD	25	40
11-34932	NUT, FRONT ANCHOR PIN	37	13	12-29395	WASHER, SHIFT SHAFT	25	50
11-34932	NUT, REAR ANCHOR PIN	37	19	12-31211A2	WASHER, SPLINED - PROPELLER SHAFT	27	82
11-34933	NUT, BELL HOUSING STUD	15	15	12-31266	WASHER, RUBBER-SHIFT SHAFT BUSHING	25	49
11-34933	NUT, DRIVE SHAFT HOUSING TO GEAR HOUSING STUD)	29	88	12-32518	WASHER, GIMBAL HOUSING TO LOWER SWIVEL PIN	7	26
				12-32620	WASHER, GIMBAL HOUSING BOLT	7	30
				12-32666	WASHER, INTERMEDIATE SHIFT SHAFT	17	28

PARTS INDEX

Part Number	Description	Pg.	Ref. No.	Part Number	Description	Pg.	Ref. No.
12-32834	WASHER, TRANSOM PLATE SCREW	3	10	13-26996	LOCKWASHER, TRU BOLT	35	15
12-32996	WASHER, UPPER SWIVEL SHAFT (.015)	11	29	13-27660	LOCKWASHER, HYDRAULIC PUMP TRU BOLT	31	35
12-32997	WASHER, UPPER SWIVEL SHAFT (.062)	11	29	13-33734A1	LOCKWASHER, TRANSOM PLATE SCREW	3	11
12-32997	WASHER, UPPER SWIVEL SHAFT (.063)	11	29	13-37272	LOCKE WASHER, TRANSOM PLATE SCREW	3	5
12-34966	WASHER, STEERING LINK ROD (NYLON)	11	36	13-39107	LOCKWASHER, HYDRAULIC PUMP SCREW	31	13
12-34966	WASHER, STEERING LINK ROD (NYLON)	11	36	13-54667	WASHER, SPRING - STEERING LINK ROD	11	37
12-35935	WASHER, BELL HOUSING STUD	15	14	13-54667	WASHER, SPRING - STEERING LINK ROD	11	37
12-35965	WASHER, CUPPED	27	81	14-31210	TAB WASHER, PROPELLER NUT	27	83
12-36001	WASHER, WATER PUMP BODY SCREW	25	37	14-79447	TAB WASHER, GEAR HOUSING COVER	27	78
12-37271	WASHER, SQUARE - TRANSOM PLATE SCREW	3	6	15-31535A1	SHIM	27	72
12-37985	WASHER, STEERING CABLE GUIDE TUBE	3	17	15-35244A1	SHIM, GIMBAL HOUSING BEARING (.022 THRU .010)	5	14
12-38000	WASHER, SYNTHANE - BELL HOUSING (WITHOUT GIMBAL TRIM SENDER)	15	12	15-35980A1	SHIM, BEARING CUP TO DRIVE SHAFT HOUSING (.002-3-5-15)	21	44
12-39116	WASHER, UPPER SHIFT LEVER	17	30	15-36178A1	SHIM, BEARING CUP TO DRIVE SHAFT HOUSING (.002-3-10-15)	19	20
12-45737	WASHER, FRONT ANCHOR PIN	37	9	15-45691A1	SHIM, BEARING CUP TO TOP COVER	21	28
12-45737	WASHER, REAR ANCHOR PIN	37	15	15-45691A1	SHIM, BEARING CUP TO TOP COVER	21	28
12-45810	WASHER, DRIVE GEAR TO UNIVERSAL JOINT NUT	21	46	15-47397A1	SHIM	27	61
12-46765	WASHER, FRONT ANCHOR PIN	37	12	15-57007A1	SHIM, DRIVE SHAFT BEARING TO GEAR HOUSING (.002-3-5-10-20)	23	19
12-46765	WASHER, REAR ANCHOR PIN	37	18	15-71013	SHIM, BEARING CUP TO DRIVE SHAFT HOUSING	21	45
12-47683	WASHER, UPPER SWIVEL SHAFT (.031)	11	29	16-46911	STUD, GEAR HOUSING TO DRIVE SHAFT HOUSING (3 3/16")	23	3
12-56085	WASHER, ANODIC BOLT ASSEMBLY	7	29	16-55422	STUD, CONTROL PANEL TO BOAT (2")	33	38
12-72498	WASHER, SYNTHANE - BELL HOUSING (WITH GIMBAL TRIM SENDER)	15	12	16-56295	STUD, DRIVE SHAFT HOUSING TO GEAR HOUSING (2 11/16")	19	2
13-21804	LOCKWASHER, TRIM INDICATOR SENDER SCREW	33	56	16-56296	STUD, GIMBAL HOUSING TO TRANSOM PLATE (4 3/4")	5	2
13-26992	LOCKWASHER, CONTROL VALVE SCREW	31	6	16-56297	STUD, WATER PUMP BASE AND BODY TO GEAR HOUSING (3 3/8")	23	6
13-26992	LOCKWASHER, MOUNTING BRACKET SCREW	31	34	16-56298	STUD, GEAR HOUSING TO DRIVE SHAFT HOUSING (1 31/32")	23	4
13-26992	LOCKWASHER, STARTER SOLENOID SCREW	31	30	16-56766	STUD, HYDRAULIC CONNECTOR TO GIMBAL HOUSING	5	21
13-26993	LOCKWASHER, STARTER SOLENOID TERMINAL (5/16")	31	26	16-59579	STUD, BELL HOUSING TO DRIVE SHAFT HOUSING	15	13
13-26996	LOCKWASHER, STARTER SOLENOID TERMINAL (#10)	31	24				
13-26996	LOCKWASHER, SWITCH AND SENDER SCREW	11	22				

PARTS INDEX

Part Number	Description	Pg.	Ref. No.	Part Number	Description	Pg.	Ref. No.
17-30545	PIN, DRIVE SHAFT	23	14	22-52644	PLUG, PIPE - GIMBAL HOUSING	5	7
17-30632	CROSS PIN	27	66	22-69059	FITTING, GREASE - GIMBAL RING (1/8-27)	9	5
17-35571	PIN, HINGE PIN RETAINING - GIMBAL RING	9	8	22-74036	FITTING, GREASE - GIMBAL HOUSING (STAINLESS STEEL)	5	8
17-35973	DOWEL PIN, WATER PUMP BASE TO WATER PUMP BODY	23	26	22-74036	FITTING, GREASE - GIMBAL RING (1/4-28) - USED WITH B-77124A	9	5A
17-37972	PIN, SHIFT CRANK - GEAR HOUSING	23	2	23-28055	BUSHING, RUBBER - WATER TUBE SEALING	7	37
17-38031	PIN, HINGE - GIMBAL RING TO BELL HOUSING	9	7	23-29804	SLEEVE, GUIDE-WATER INLET TUBE	25	42
17-45212	PIN, SWIVEL - GIMBAL HOUSING TO GIMBAL RING (LOWER)	5	24	23-30617A2	BUSHING ASSEMBLY ,SHIFT SHAFT	25	47
17-45735	PIN, FRONT ANCHOR - TRIM CYLINDER TO GIMBAL RING (10 11/32")	37	8	23-32632	BUSHING, DRIVE SHAFT HOUSING	19	5
17-45738	PIN, REAR ANCHOR - TRIM CYLINDER TO DRIVE XHAFT HOUSING (7 1	37	14	23-35088	BUSHING, BELL HOUSING (5/8")	15	7
17-46912	PIN, DOWLE - GEAR HOUSING TO DRIVE SHAFT HOUSING	23	8	23-35130	ADAPTOR, BEARING CARRIER	5	12
18-20233	CLIP RETAINING-SHIFT SHAFT	25	44	23-35985	SPACER, DRIVE GEAR ROLLER BEARING CUPS	21	43
18-32665	COTTER PIN, INTERMEDIATE SHIFT SHAFT RETAINING	17	27	23-36290	SPACER, TRANSOM PLATE SCREW	3	9
18-34212	COTTER PIN, RETAINING - LOWER SWIVEL PIN	5	25	23-39273	SPACER, GIMBAL RING	9	4
18-45882	COTTER PIN, LINK ROD AND SCREW	13	40	23-39634	BUSHING, SYNTHANE - GIMBAL HOUSING (UPPER)	5	5
18-89212	COTTER PIN, CLUTCH ACTUATING SHAFT	27	1	23-45588	BUSHING, BELL HOUSING (5/16")	15	9
19-32298	PLUG, TRIM TAB HOLE - DRIVE SHAFT HOUSING	19	12	23-55798	SPACER,UPPER DRIVE SHAFT	19	27
19-32652	WELCH PLUG, DRIVE SHAFT HOUSING	19	4	23-61290	BUSHING, RUBBER - FRONT ANCHOR PIN	37	10
19-58934	PLUG, PLASTIC - GIMBAL HOUSING	5	8A	23-61290	BUSHING, RUBBER - REAR ANCHOR PIN	37	16
22-31345	FITTING, GREASE - BELL HOUSING	15	17	24-30893	SPRING, RETAINER-CROSS PIN	27	67
22-31345	FITTING, GREASE - GIMBAL HOUSING	5	8	24-34576	SPRING, COMPRESSION - DRIVE SHAFT	23	15
22-31704	PLUG, PIPE - DRIVE SHAFT HOUSING (WATER POCKET)	19	3	24-46312	SPRING, FRONT ANCHOR PIN	37	11
22-32125	CONNECTOR, SHIFT CABLE - BELL HOUSING (EARLY MODELS)	15	4	24-46312	SPRING, REAR ANCHOR PIN	37	17
22-32561	PLUG,PIPE - UPPER SWIVEL SHAFT	11	28	24-55797	SPRING, UPPER DRIVE SHAFT (TOP COVER)	19	28
22-33066	CONNECTOR, WATER HOSE TO BELL HOUSING	15	3	24-55797	SPRING, UPPER DRIVE SHAFT (TOP COVER)	19	28
22-38609	PLUG, CONROL VALVE	31	4	25-20863	"O" RING, GIMBAL HOUSING	5	19
22-48169	ELBOW, HYDRAULIC HOSE TO TRIM INDICATOR SENDER	33	52	25-23145	"O" RING, GIMBAL HOUSING	5	20
				25-25439	"O" RING, UNIVERSAL JOINT	21	36
				25-25439	"O"RING, SHIFT SHAFT BUSHING	25	46
				25-26834	"O"RING, HYDRAULIC PUMP	35	1
				25-26834	"O"RING, HYDRAULIC PUMP TO CONTROL VALVE	31	2
				25-26834	"O"RING, HYDRAULIC PUMP TO CONTROL VALVE (SEE REFERENCE #2)	31	-

PARTS INDEX

Part Number	Description	Pg.	Ref. No.	Part Number	Description	Pg.	Ref. No.
25-30271	RING, RUBBER-CENTRIFUGAL SLINGER (DRIVE SHAFT)	25	41	27-55810	GASKET, WATER POCKET COVER	19	9
25-30613	"O" RING, UPPER - DRIVE SHAFT	23	16	27-64818	GASKET, DRIVE SHAFT HAG. TO BELL HAG.(PART OF DRIVE SHAFT H	15	2
25-31534	O-RING, BEARING CARRIER	27	73	27-65373	GASKET, GIMBAL HOUSING TO TRAMSOM (WITHOUT GIMBAL TRIM SENDE	7	40
25-32546	"O" RING, TOP COVER SEALING	21	29	28-30281	KEY	27	77
25-33145	"O" RING, WATER PUMP BASE	23	22	28-56654	PIN, IMPELLER DRIVE	25	35
25-33504	"O" RING, BELL HOUSING	15	11	30-17927	BALL BEARING, REVERSE GEAR	27	71
25-45016	"O"RING, BLEED SCREW	33	54	30-36418	BEARING, BALL - GIMBAL HOUSING	5	13
25-55801	"O" RING, UPPER DRIVE SHAFT	19	24	30-60794A2	BEARING ASSEMBLY, BALL - GIMBAL HOUSING	5	16
25-60324A2	"O"RING REPAIR KIT, TRIM CYLINDER	37	-	31-21145	ROLLER BEARING, GIMBAL HOUSING (UPPER)	5	5
25-60342A2	"O"RING KIT	39	-	31-30895	ROLLER BEARING, FORWARD GEAR	27	63
25-70937	"O" RING, OIL SEAL CARRIE	21	39	31-30956	ROLLER BEARING	27	75
26-31507	OIL SEAL, WATER PUMP BASE	23	25	31-32536	BEARING, ROLLER - GIMBAL HOUSING (LOWER)	5	3
26-31507	OIL SEAL, WATER PUMP BODY (EARLY MIDELS ONLY)	25	32	31-32538	BEARING, ROLLER - GIMBAL RING	9	2
26-32511	OIL SEAL, GEAR CHAMBER - DRIVE SHAFT HOUSING	19	19	31-32575A1	BEARING ASSEMBLY, DRIVE SHAFT	19	26
26-32540	OIL SEAL, UPPER GIMBAL HOUSING BUSHING	5	6	31-35928A1	TAPERED ROLLER BEARING ASSEMBLY	27	64
26-32541	OIL SEAL, GIMBAL RING	9	3	31-35934	BEARING, ROLLER - DRIVE SHAFT	23	9
26-32911	OIL SEAL, LOWER GIMBAL HOUSING ROLLER BEARING	5	4	31-35988A2	TAPERED ROLLER BEARING ASSEMBLY, DRIVE GEAR	21	42
26-33144	OIL SEAL, WATER PUMP BASE	23	24	31-35990A1	TAPERED ROLLER BEARING ASSEMBLY, PINION GEAR	19	21
26-36143	SEAL, GREASE - GIMBAL HOUSING	5	10	31-53079A1	TAPERED ROLLER BEARING ASSEMBLY, DRIVE SHAFT	23	20
26-36557	SEAL, RUBBER - WATER POCKET COVER	19	8	31-61100A1	BEARING ASSEMBLY, DRIVE SHAFT	19	26
26-37259	OIL SEAL, DRIVE SHAFT HOUSING - LOWER	19	18	31-61100A1	BEARING ASSEMBLY, DRIVE SHAFT	21	26
26-38970	SEAL, RUBBER - WATER INLET TUBE	25	33	31-61100A1	BEARING ASSEMBLY, DRIVE SHAFT	21	26
26-45577	SEAL, GEAR HOUSING	23	5	32-34049	TUBE, NYLON - SHIFT ACTUATING CABLE	3	25
26-45587	OIL SEAL, BELL HOUSING	15	8	32-38377	TUBE, SHIFT ACTUATING CABLE	3	20
26-46021	OIL SEAL, SHIFT SHAFT BUSHING	25	48	32-38377	TUBE, SHIFT ACTUATING CABLE	3	20
26-54925	OIL SEAL, UPPER GIMBAL HOUSING BEARING	5	6	32-38377	TUBE, SHIFT ACTUATING CABLE	3	20
26-68493	OIL SEAL, CARRIER	21	41	32-47373	HOSE, HYDRAULIC - CONNECTOR TO TRIM CYLINDER (12 1/2")	37	6
26-76868	OIL SEAL	27	76	32-47642	HOSE, WATER - BELL HOUSING TO GIMBAL HOUSING	15	21
27-32433	GASKET, LOWER - WATER PUMP BASE TO FACE PLATE	23	27				
27-32434	GASKET, UPPER - FACE PLATE TO WATER PUMP BODY	25	29				
27-33146	GASKET, WATER PUMP BASE TO GEAR HOUSING	23	21				
27-35982	GASKET, RUBBER - BELL HOUSING	15	10				

PARTS INDEX

Part Number	Description	Pg.	Ref. No.	Part Number	Description	Pg.	Ref. No.
32-54236	TUBE, WATER - WATER POCKET COVER	19	11	54-31766	CLAMP, SHIFT ACTUATING CABLE BELLOWS TO GIMBAL HOUSING	7	33
32-58432A2	TUBING, HYDRAULIC PUMP TO VALVE (WITH GIMBAL TRIM SENDER)	37	3	54-32523	CLAMP, WATER HOSE ATTACHING	15	22
32-58432A2	TUGING, HYDRAULIC PUMP TO TRIM SENDER (BLACK-49")	37	1	54-32533	CLAMP, EXHAUST BELLOWS TO BELL HOUSING AND GIMBAL HOUSING	15	24
32-59841	HOSE, HYDRAULIC - CONNECTOR TO REVERSE LOCK VALVE (44")	37	4	54-38863	CLAMP, ACTUATING CABLE BELLOWS TO SHIFT ACTUATING CABLE	7	32
32-59842	HOSE, HYDRAULIC - CONNECTOR TO TRIM SENDER (29 1/2")	37	5	54-38863	CLAMP, HOSE	37	3B
32-60542	TUBE, WATER - GIMBAL HOUSING	7	36	54-46770	CLAMP, HARNESS ATTACHING	33	47
32-68676	HOSE, HYDRAULIC - CONNECTOR TO TRIM CYLINDER (12 1/2")	37	6	84-61109	BATTERY LEAD (POSITIVE)	33	50
37-60879A1	DECAL SET, DRIVE SHAFT HOUSING	19	13	84-61110	BATTERY LEAD (NEGATIVE)	33	50
37-69447A1	DECAL SET, DRIVE SHAFT HOUSING	19	13	84-70967	HARNESS, DUMMY SENDER	9	18
37-70658A1	DECAL SET, DRIVE SHAFT HOUSING	19	13	84-70968	HARNESS, TRIM LIMIT SWITCH	9	18
37-76731A1	DECAL SET, DRIVE SHAFT HOUSING	19	14	84-74023	CONNECTOR AND HARNESS (GREEN LEAD 5 1/2" LONG)	31	17
37-76733	DECAL, GIMBAL HOUSING .	5	23	85-63990	INSULATOR, SWITCH AND SENDER	9	20
37-76752	DECAL, DRIVE SHAFT HOUSING "888"	19	15	89-68258	STARTER SOLENOID	31	22
38-60884	EMBLEM, GIMBAL HOUSING	5	22	392-2529	SPRING SET, BRUSH TENSION	35	13
43-59832A2	GEAR ASSEMBLY, COMPLETE (20-22 GEAR RATIO)	19	22	392-2618	CAM, VALVE BODY	35	3
43-61026	REVERSE GEAR	27	69	392-2623	WASHER, THRUST - ARMATURE	35	7
43-61027	GEAR, PINION - DRIVE SHAFT	23	17	392-2936	VALVE BODY AND GEAR ASSEMBLY	35	2
43-92158A1	FORWARD GEAR	27	62	392-2937	SEAL, RESERVOIR TO VALVE BODY AND GEAR	35	5
44-66060	PROPELLER SHAFT	27	68	392-2938	BOLT SET, THRU- PLATE AND FRAME TO RESERVOIR	35	14
45-55757A1	DRIVE SHAFT ASSEMBLY .	23	13	392-2939	RESERVOIR ASSEMBLY . . .	35	6
45-55796	DRIVE SHAFT, UPPER	19	23	392-2940	PLATE ASSEMBLY, COMMUTATOR END	35	11
46-48743A1	WATER PUMP BODY ASSEMBLY	25	30	392-2941	BRUSH SET, COMMUTATOR END PLATE	35	12
46-57234A1	WATER PUMP BASE ASSEMBLY	23	23	392-2942	FIELD AND GRAME ASSEMBLY	35	9
46-64141A1	WATER PUMP BODY ASSEMBLY	25	30	392-2943	ARMATURE, FIELD AND FRAME	35	8
47-65960	IMPELLER, WATER PUMP .	25	34	392-2944	BALL, COMMUTATOR END PLATE	35	10
52-37963	CLUTCH	27	65	1547-5523A18	DRIVE SHAFT HOUSING ASSEMBLY	19	1
52-66063	CLUTCH	27	65	1623-4110A13	GEAR HOUSING ASSEMBLY, COMPLETE	23	-
53-35128	SNAP RING, BEARING RETAINING	5	15	1623-4110A3	GEAR HOUSING ASSEMBLY	23	1
53-72413	RETAINING RING, UPPER SWIVEL SHAFT WITH GIMBAL TRIM SENDER . .	11	26	1623-4110A6	GEAR HOUSING	27	-
54-31765	CLAMP, UNIVERSAL JOINT BELLOWS TO BELL HOUSING AND GIMBAL HO	15	20	1623-4110A6	GEAR HOUSING ASSEMBLY, COMPLETE	23	-
				1623-5356A3	GEAR HOUSING ASSEMBLY, COMPLETE	23	-
				1623-5356A4	GEAR HOUSING	27	1

PARTS INDEX

Part Number	Description	Pg.	Ref. No.	Part Number	Description	Pg.	Ref. No.
1623-5356A4	GEAR HOUSING ASSEMBLY	23	1				
1623-8951A2	GEAR HOUSING	27	-				