



PARTS CATALOG

28 HORSEPOWER

SERIAL NUMBER

28664-04606 AND UP
28664-25801 AND UP
28664-38146 AND UP
28664-56821 AND UP

TABLE OF CONTENTS:

CARBURETOR	8
CLAMP AND SWIVEL BRACKET	16
COWLING	36
CRANKCASE AND CYLINDER HEAD	2
CRANKSHAFT AND PISTON	4
DRIVESHAFT HOUSING	10
ELECTRIC START COMPONENTS	50
ELECTRIC STARTER MOTOR	54
FLYWHEEL MAGNETO	28
FUEL LINES AND FILTER	48
FUEL PUMP	44
FUEL PUMP	46
FUEL TANK-INTERNATIONAL AND USA (ORIGINAL EQUIP) 24 LITRE	40
FUEL TANK-INTERNATIONAL ONLY (ORIGINAL EQUIP) 24 LITRE (6.3)	38
FUEL TANK-REPLACEMENT OR ADDITIONAL 22.7 LITRE (6.0 GALLONS)	42
GEAR HOUSING ASS'Y	12
GEAR SHIFT LINKAGE	24
INTAKE MANIFOLD	6
MOUNTING SYSTEM	20
OPTIONAL PARTS	56
PARTS INDEX	60
RECOIL STARTER	32
REMOTE CONTROL ATTACHING KIT	58
REVERSE LOCK	18
STEERING HANDLE	22
THROTTLE CONTROL	26

NOTE: Indented description indicate that these parts are included in preceeding assembly.

AR = As Required

NSS = Not Sold Separate

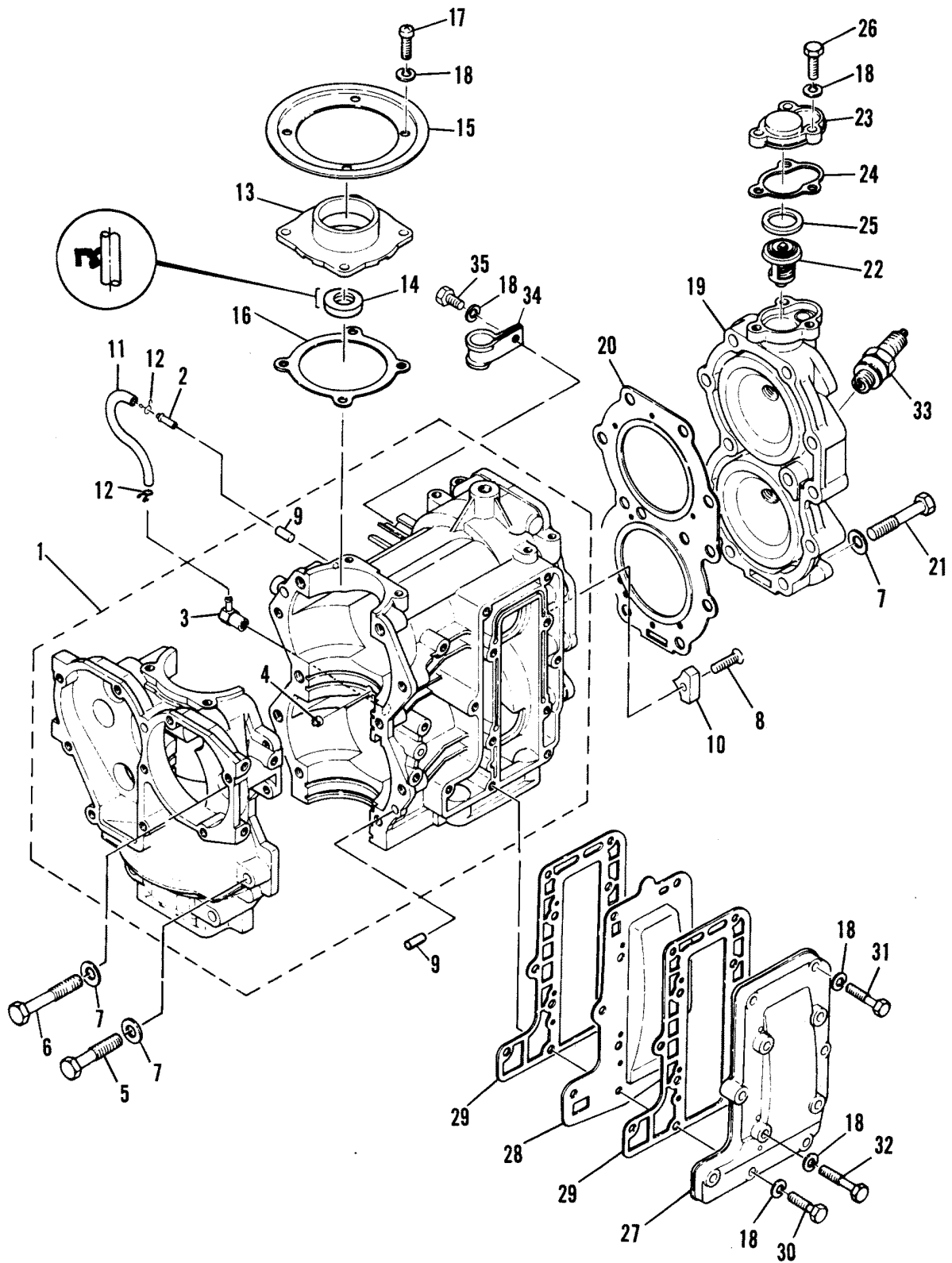
OPT = Optional

NS = Not Shown

THESE PARTS BOOKS/FICHE CARD ARE COPYRIGHTED AND MAY NOT BE DISTRIBUTED OR REPRODUCED IN ANY OTHER FORMAT BY ANYONE OTHER THAN MERCURY MARINE WITHOUT THE PRIOR WRITTEN CONSENT OF MERCURY MARINE.

THIS PAGE INTENTIONALLY LEFT BLANK

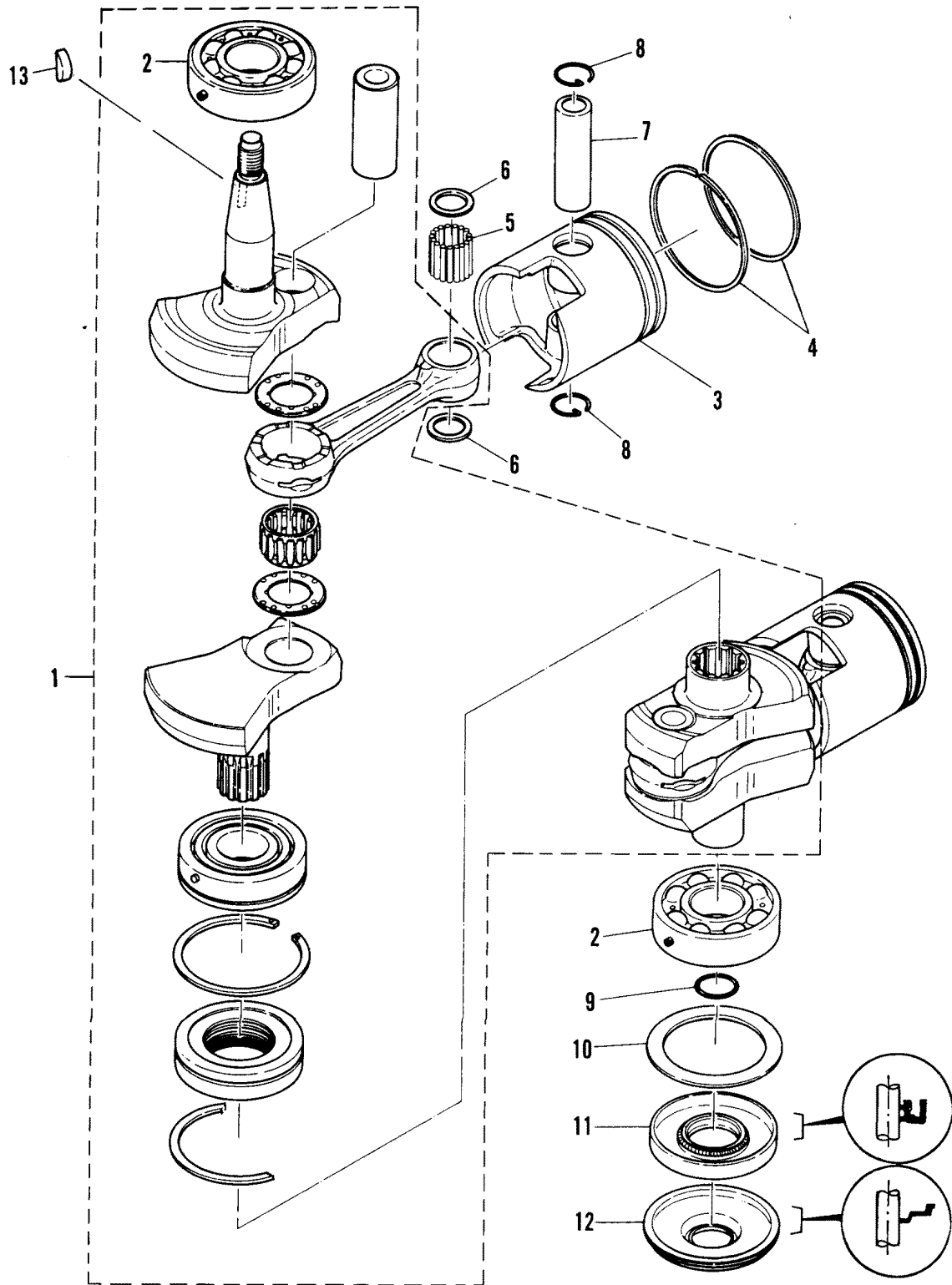
CRANKCASE AND CYLINDER HEAD



CRANKCASE AND CYLINDER HEAD

REF. NO.	PART NO.	SYM.	QTY.	DESCRIPTION
1	870-6851M		1	CRANKCASE ASS'Y
2	22-80122M		1	FITTING, CRANKCASE DRAIN
3	21-80727M		1	CHECK VALVE ASS'Y
4	21-80107M		1	CHECK VALVE
5	10-82406M		2	BOLT
6	10-82408M		8	BOLT
7	12-80564M		21	WASHER
8	10-82167M		1	SCREW
9	17-82364M		2	PIN, DOWEL
10	81556M		1	ANODE
11	32-82000M		1	HOSE
12	54-82046M		2	CLAMP, HOSE
13	81564M		1	HOUSING, OIL SEAL
14	26-82245M		1	OIL SEAL, CRANKSHAFT (UPPER)
15	83199M		1	RETAINER, MAGNETO BASE
16	27-81565M		1	GASKET, OIL SEAL HOUSING
17	10-82177M		4	SCREW
18	13-82197M		19	WASHER, LOCK
19	968-6848M		1	HEAD, CYLINDER
20	27-81555M		1	GASKET, CYLINDER HEAD
21	10-82407M		11	BOLT
22	81098M		1	THERMOSTAT
23	81030M		1	COVER, THERMOSTAT
24	27-81031M		1	GASKET, THERMOSTAT COVER
25	12-81835M		1	WASHER
26	10-83539M		3	BOLT
27	81569M		1	COVER, EXHAUST-OUTER
28	81568M		1	COVER, EXHAUST-INNER
29	27-81570M		2	GASKET, EXHAUST COVER
30	10-84239M		2	BOLT
31	10-84487M		5	BOLT
32	10-84488M		4	BOLT
33	33-82371M		2	SPARK PLUG, B-7HS (NGK)
34	54-82034M		1	CLAMP
35	10-84303M		1	BOLT
	83787M		1	POWERHEAD ASS'Y COMPLETE (SEE NOTE)
	27-84166M		1	GASKET SET, POWERHEAD

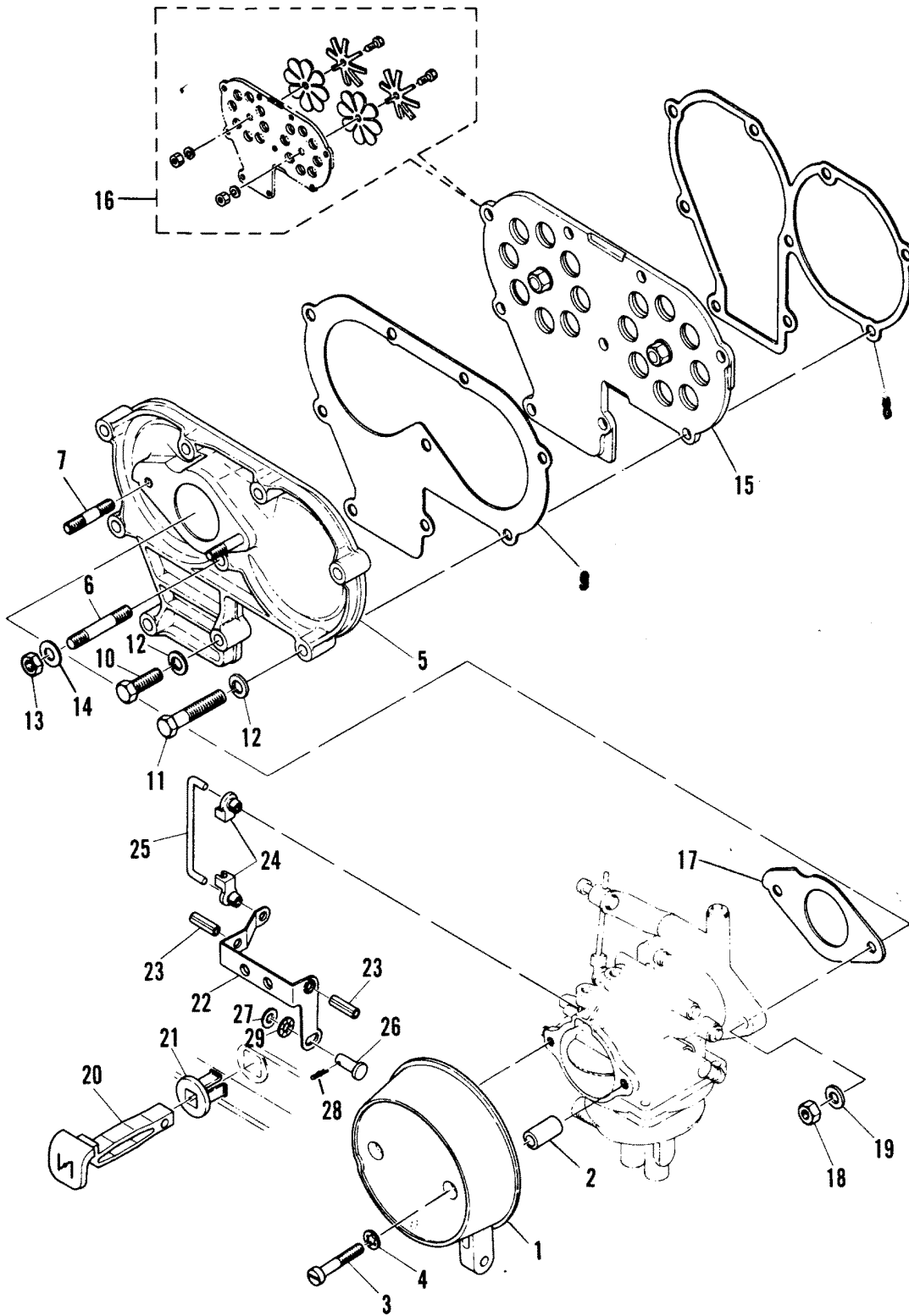
CRANKSHAFT AND PISTON



CRANKSHAFT AND PISTON

REF. NO.	PART NO.	SYM.	QTY.	DESCRIPTION
1	463-6849M		1	CRANKSHAFT ASS'Y
2	30-82307M		2	BEARING, CRANKSHAFT
3	761-6937M		2	PISTON (STD 66.96 MM)
	761-6785M		2	PISTON (STD 66.97 MM)
	761-6786M		2	PISTON (STD 66.98 MM)
	761-6787M		2	PISTON (1ST O.X. 67.25 MM)
	761-6788M		2	PISTON (2ND O.S. 67.50 MM)
4	39-81095M		2	PISTON RING SET (STD)
	39-81096M		2	PISTON RING SET (1ST O.S. 67.25 MM)
	39-81097M		2	PISTON RING SET (2ND O.S. 67.50 MM)
5	29-84452M		62	BEARING, NEEDLE
6	12-81829M		4	WASHER, CONNECTING ROD BEARING
7	41-80565M		2	PIN, PISTON
8	53-82345M		4	SNAP RING
9	25-82268M		1	O-RING, CRANKSHAFT TO DRIVESHAFT
10	23-81842M		1	SPACER, INNER BEARING
11	26-82246M		1	OIL SEAL, CRANKSHAFT (LOWER)
12	82254M		1	RETAINER, OIL SEAL
13	28-81914M		1	KEY, CRANKSHAFT TO FLYWHEEL

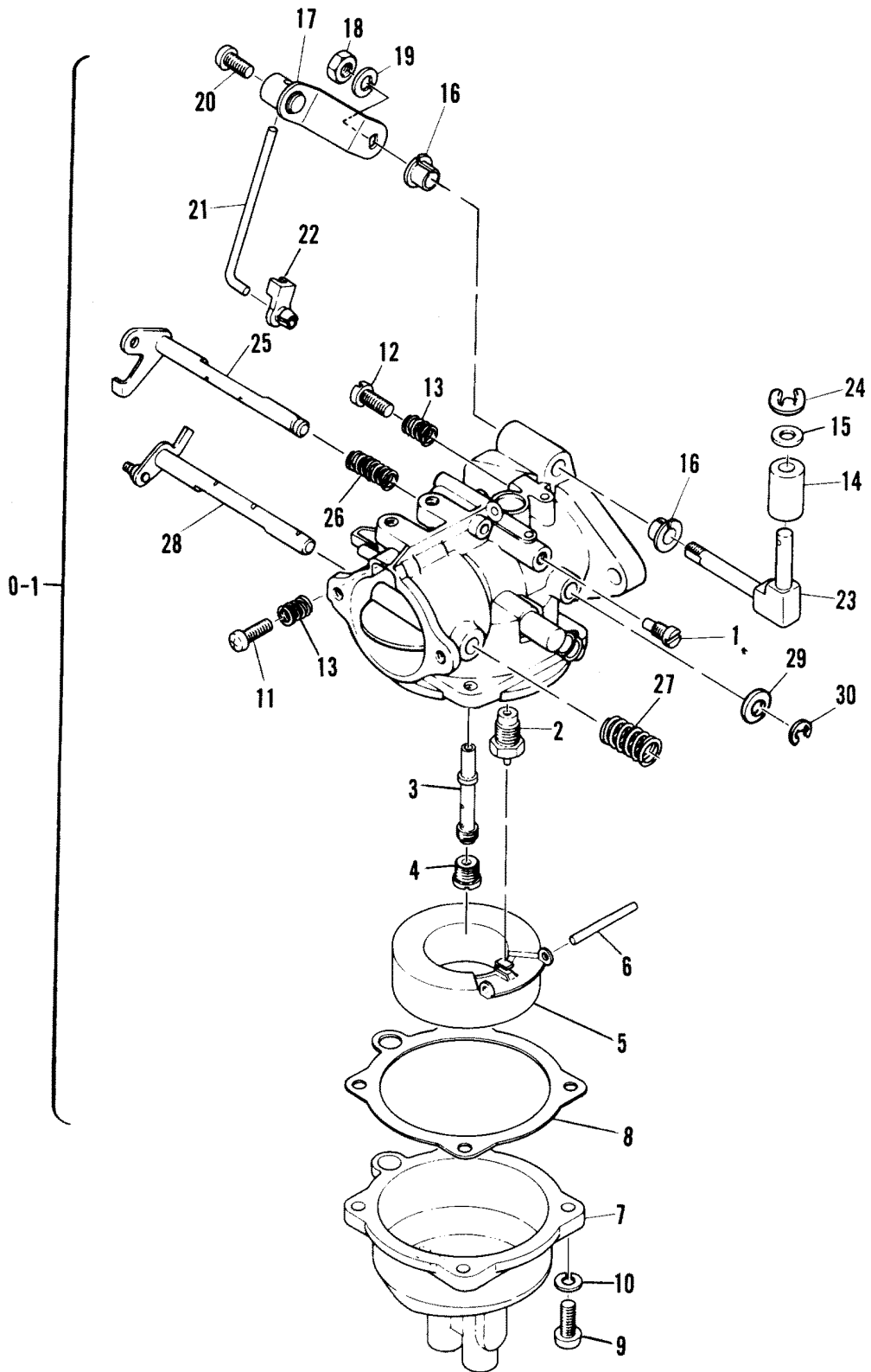
INTAKE MANIFOLD



INTAKE MANIFOLD

REF. NO.	PART NO.	SYM.	QTY.	DESCRIPTION
1	81562M		1	COVER, AIR INTAKE
2	23-81972M		2	SPACER, INTAKE COVER TO BASE
3	10-84245M		2	SCREW
4	12-82195M		2	WASHER
5	80570M		1	MANIFOLD, INTAKE
6	16-81733M		1	STUD, MANIFOLD ATTACHING
7	16-81728M		2	STUD, CARBURETOR ATTACHING
8	27-80569M		1	GASKET, REED VALVE
9	27-80571M		1	GASKET, INTAKE MANIFOLD
10	10-82405M		2	BOLT
11	10-83285M		6	BOLT (MANUAL)
	10-83285M		5	BOLT (ELECTRIC)
12	13-82197M		8	WASHER, LOCK
13	11-82380M		1	NUT
14	12-82198M		1	WASHER
15	80568M		1	REED VALVE
16	34-84453M		1	REED SET
17	27-80572M		1	GASKET, CARBURETOR MANIFOLD
18	11-82380M		2	NUT
19	13-82199M		2	WASHER
20	81578M		1	KNOB, CHOKE
21	82063M		1	GROMMET, CHOKE KNOB
22	81576M		1	LEVER, CHOKE
23	17-82155M		2	PIN, ROLL
24	81191M		2	SWIVEL, LINK ROD
25	81577M		1	LINK ROD, CHOKE LEVER
26	17-81880M		1	PIN, CLEVIS
27	12-81790M		1	WASHER
28	18-82051M		1	PIN
29	13-81865M		1	WASHER, WAVE

CARBURETOR

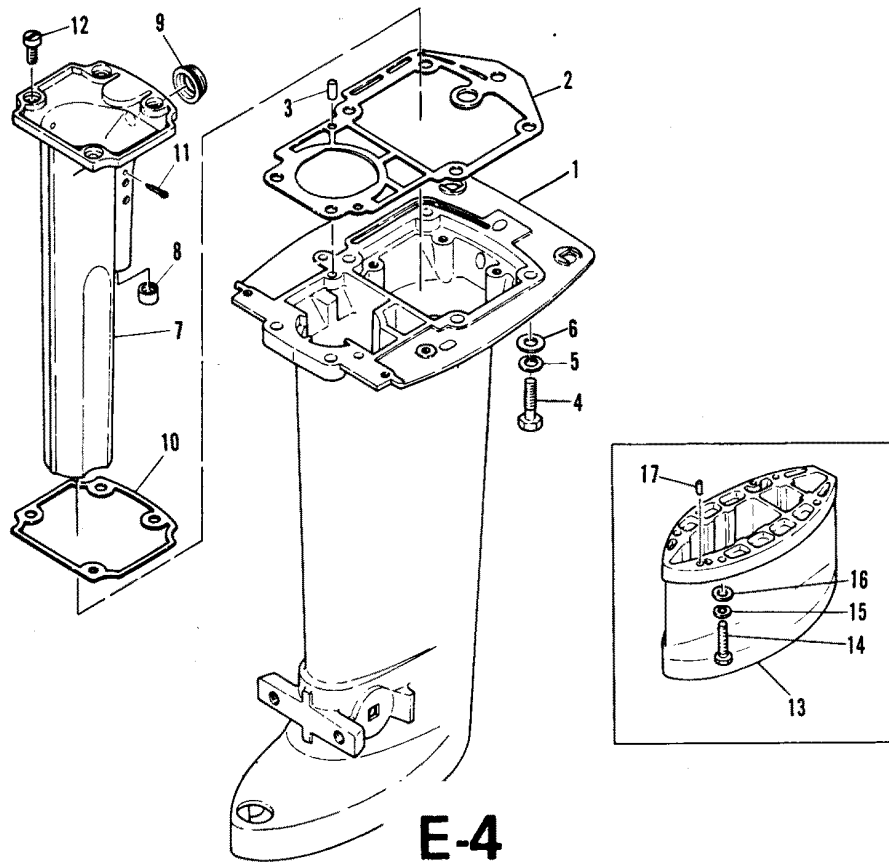


CARBURETOR

REF. NO.	PART NO.	SYM.	QTY.	DESCRIPTION
0-1	1383-6959M		1	CARBURETOR ASS'Y SERIAL 00005306-09999999
	1383-6850M		1	CARBURETOR ASS'Y SERIAL 00000000-00005305
1	81559M		1	JET, LOW SPEED (#60)
2	80593M		1	INLET VALVE & SEAT
3	80576M		1	NOZZLE, MAIN
4	80582M		1	JET, MAIN (#140)
5	80591M		1	FLOAT
6	17-80592M		1	PIN, FLOAT
7	83200M		1	FLOAT BOWL
8	27-80590M		1	GASKET, FLOAT BOWL
9	10-82515M		4	SCREW
10	13-82206M		4	WASHER, LOCK
11	10-82623M		1	SCREW, IDLE SPEED
12	10-80573M		1	SCREW, IDLE MIXTURE
13	24-80575M		2	SPRING, IDLE SCREW
14	23-80220M		1	BUSHING SERIAL 00000000-00010710
	23-84454M		1	BUSHING, THROTTLE SHAFT SERIAL 00010711-09999999
15	12-82209M		1	WASHER
16	23-81941M		2	BUSHING, THROTTLE SHAFT
17	80622M		1	LEVER, THROTTLE
18	11-82379M		1	NUT
19	13-82208M		1	WASHER, LOCK
20	10-81558M		1	SET SCREW, THROTTLE LEVER
21	83160M		1	LINK ROD, THROTTLE LEVER
22	81191M		1	SWIVEL, THROTTLE
23	83113M		1	SHAFT, THROTTLE
24	53-82328M		1	SNAP RING
25	83201M		1	LEVER THROTTLE
26	24-80574M		1	SPRING, THROTTLE VALVE
27	24-83202M		1	SPRING, CHOKE LEVER
28	83203M		1	CHOKE LEVER SERIAL 00000000-00010710
	84455M		1	CHOKE LEVER SERIAL 00010711-09999999
29	12-83204M		2	M-12-83204M
30	53-83205M		1	SNAP RING
	84456M		1	REPAIR KIT, CARBURETOR SERIAL 00005306-09999999

DRIVESHAFT HOUSING

- #Contents of Powerhead Gasket Set (M-27-84166M)
- ▲Contents of Lower Unit Gasket Set (M-27-84177M)
- ◆Contents of Long Shaft Extension Kit (M-83814M)



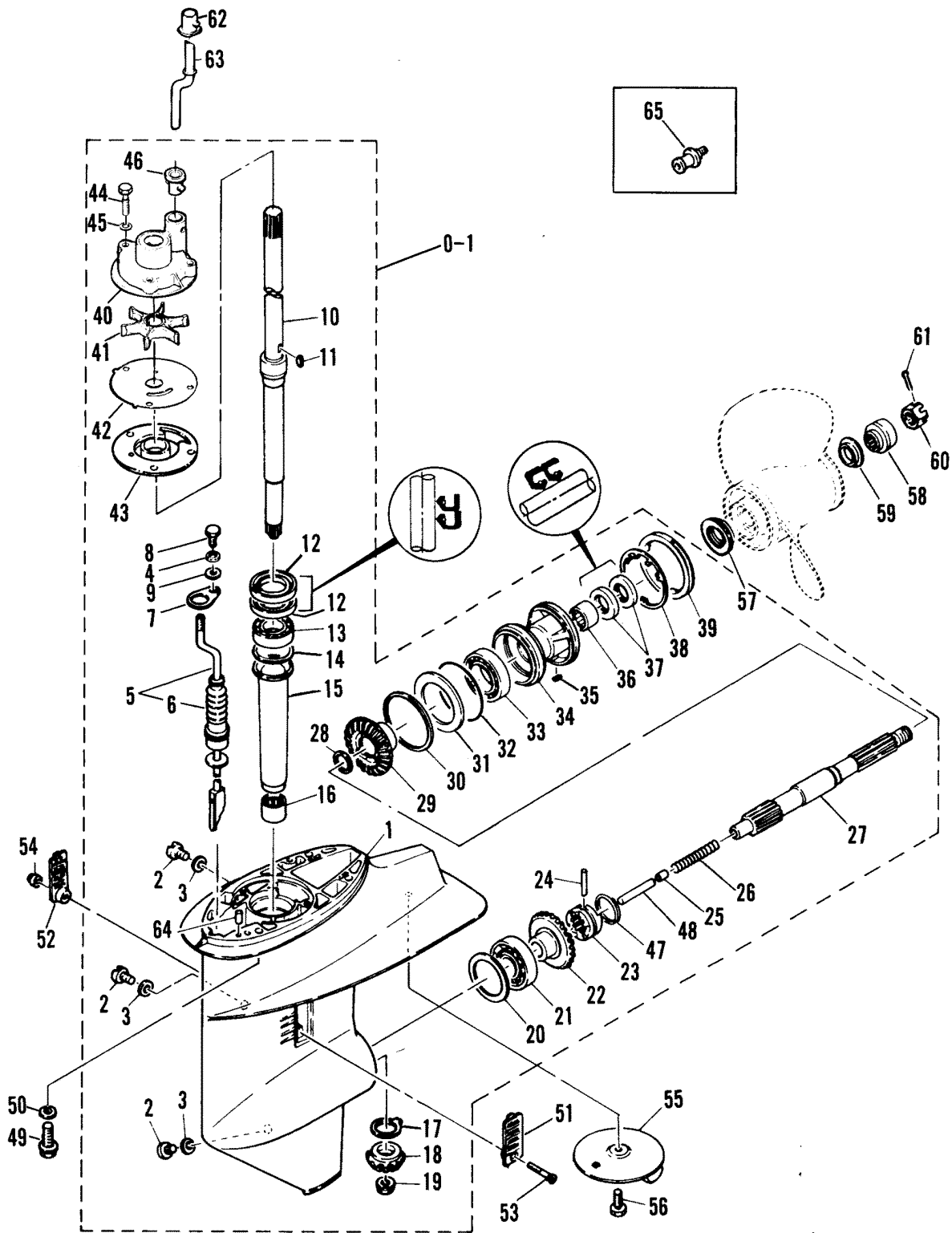
28 HP

E-4

DRIVESHAFT HOUSING

REF. NO.	PART NO.	SYM.	QTY.	DESCRIPTION
1	1587-6854M		1	DRIVESHAFT HOUSING
2	27-81613M		1	GASKET, DRIVESHAFT HOUSING
3	17-82364M		2	PIN, DOWEL
4	10-82465M		6	BOLT
5	13-82215M		6	WASHER, LOCK
6	12-82217M		6	WASHER
7	81571M		1	MANIFOLD, EXHAUST SERIAL 00000000-00004605
	83306M		11	MANIFOLD, EXHAUST SERIAL 00004606-09999999
8	26-81574M		1	GASKET, EXHAUST MANIFOLD
9	26-81572M		1	GASKET, EXHAUST MANIFOLD
10	27-81573M		1	GASKET, EXHAUST MANIFOLD
11	18-82131M		1	PIN, COTTER
12	10-82172M		4	SCREW
13	83206M		1	EXTENSION, LONG SHAFT
14	10-83207M		4	BOLT
15	13-82218M		4	WASHER, LOCK
16	12-82220M		4	WASHER
17	17-82364M		2	PIN, DOWEL
	83814M		1	EXTENSION KIT, LONG SHAFT

GEAR HOUSING ASS'Y

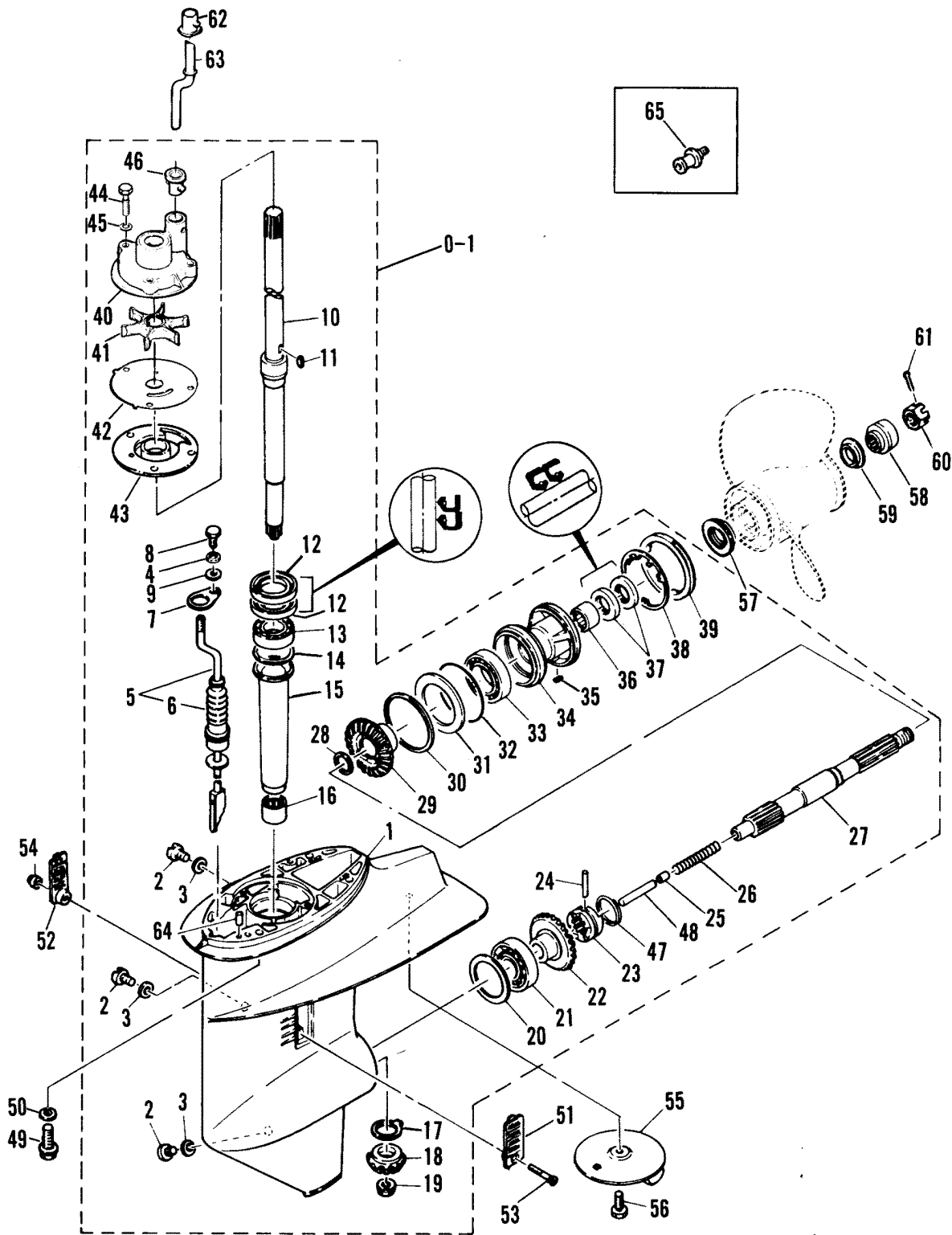


GEAR HOUSING ASS'Y

REF. NO.	PART NO.	SYM.	QTY.	DESCRIPTION
0-1	1651-6894M		1	GEAR HOUSING ASS'Y (SHOFT SHAFT)
	1651-6895M		1	GEAR HOUSING ASS'Y (LONG SHAFT)
1	1651-6855M		1	GEAR HOUSING
2	22-81924M		3	SCREW
3	27-81987M		3	GASKET
4	12-82214M		1	WASHER
5	83069M		1	SHIFT CAM ASS'Y (SHOFT SHAFT)
	83052M		1	SHIFT CAM ASS'Y (LONG SHAFT)
6	82914M		1	BOOT, SHIFT ROD
7	82916M		1	PLATE
8	10-82938M		1	BOLT
9	12-82198M		1	WASHER, PLAIN
10	45-81620M		1	DRIVESHAFT (SHORT SHAFT)
	45-81621M		1	DRIVESHAFT (LONG SHAFT)
11	28-81603M		1	KEY, DRIVESHAFT TO IMPELLER
12	26-82235M		2	OIL SEAL, DRIVESHAFT-UPPER
13	30-82291M		1	BEARING, DRIVESHAFT-UPPER
14	15-81638M		AR	SHIM, DRIVESHAFT BEARING (.05 MM)
	15-81639M		AR	SHIM, DRIVESHAFT BEARING (.08MM)
	15-81640M		AR	SHIM, DRIVESHAFT BEARING (.12 MM)
	15-81641M		AR	SHIM, DRIVESHAFT BEARING (.30 MM)
	15-81642M		AR	SHIM, DRIVESHAFT BEARING (.50 MM)
15	23-81622M		1	SLEEVE, DRIVESHAFT
16	31-82314M		1	BEARING, NEEDLE-DRIVESHAFT
17	12-81624M		1	THRUST WASHER, DRIVESHAFT
18	43-81623M		1	GEAR, PINION
19	11-81780M		1	NUT, DRIVESHAFT
20	15-81626M		AR	SHIM, FORWARD GEAR ADJUST (.05 MM)
	15-81627M		AR	SHIM, FORWARD GEAR ADJUST (.08 MM)
	15-81628M		AR	SHIM, FORWARD GEAR ADJUST (.12 MM)
	15-81629M		AR	SHIM, FORWARD GEAR ADJUST (.30 MM)
	15-81630M		AR	SHIM, FORWARD GEAR ADJUST (.50 MM)
21	31-82321M		1	BEARING, FORWARD GEAR
22	43-81625M		1	GEAR, FORWARD
23	52-81644M		1	CLUTCH
24	17-81899M		1	CROSS PIN, CLUTCH
25	80679M		1	SLIDE, SHIFT
26	24-80278M		1	SPRING, SHIFT
27	44-81643M		1	SHAFT, PROPELLER
28	12-81832M		1	THRUST WASHER, REVERSE GEAR
29	43-81631M		1	GEAR, REVERSE
30	15-81633M		AR	SHIM, REVERSE GEAR ADJUST (.05MM)
	15-81634M		AR	SHIM, REVERSE GEAR ADJUST (.08MM)

CONTINUED ON NEXT PAGE ➡

GEAR HOUSING ASS'Y

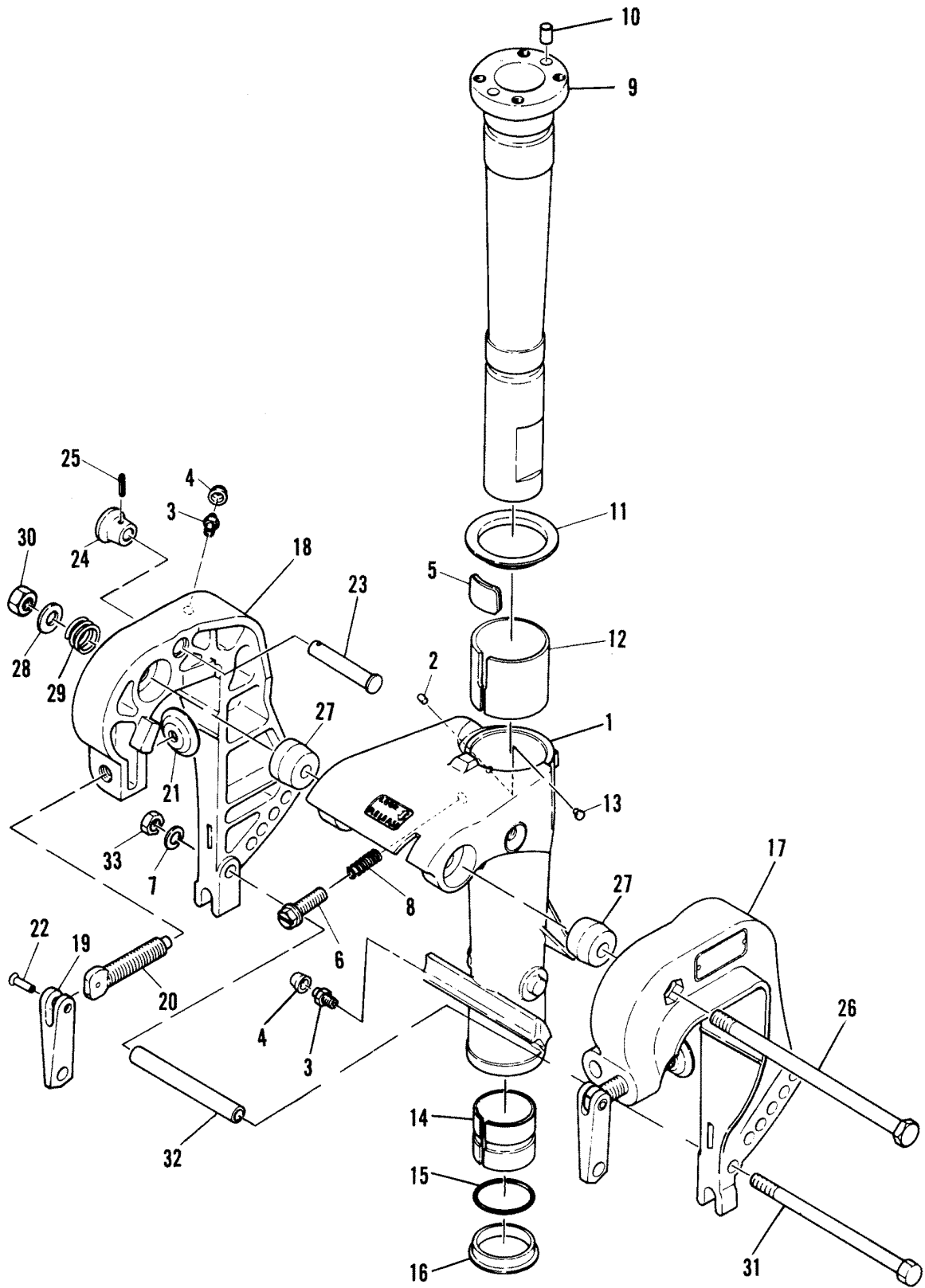


GEAR HOUSING ASS'Y

REF. NO.	PART NO.	SYM.	QTY.	DESCRIPTION
30	15-81635M		AR	SHIM, REVERSE GEAR ADJUST (.12 MM)
	15-81636M		AR	SHIM, REVERSE GEAR ADJUST (.30 MM)
	15-81637M		AR	SHIM, REVERSE GEAR ADJUST (.50 MM)
31	12-81632M		1	THRUST WASHER, REVERSE GEAR
32	25-82287M		1	O-RING BEARING HOUSING
33	30-82295M		1	BALL BEARING, REVERSE GEAR
34	81617M		1	HOUSING, BEARING
35	28-81916M		1	KEY, BEARING HOUSING
36	31-82315M		1	BEARING, NEEDLE-PROPELLER SHAFT
37	26-82230M		2	OIL SEAL, PROPELLER SHAFT
38	14-81876M		1	WASHER
39	11-81619M		1	NUT
40	46-81599M		1	BODY, WATER PUMP (STD)
	46-83307M		1	BODY, WATER PUMP (CHROME, OPTIONAL)
41	47-81604M		1	IMPELLER, WATER PUMP
42	81601M		1	BASE, WATER PUMP (STD)
	83308M		0	BASE , WATER PUMP (CHROME OPTIONAL)
43	26-84486M		1	PROTECTOR, OIL SEAL
44	10-82454M		3	BOLT
45	12-82214M		3	WASHER, LOCK
46	26-80239M		1	SEAL, WATER PUMP BODY
47	53-80678M		1	RING, CROSS PIN
48	80680M		1	PLUNGER, SHIFT
49	10-81711M		4	BOLT
50	13-81862M		4	WASHER, LOCK
51	81615M		1	COVER, WATER INLET-PORT
52	81616M		1	COVER, WATER INLET-STARBOARD
53	10-82483M		1	SCREW
54	11-81781M		1	NUT
55	82795M		1	TRIM TAB (ANODE)
56	10-82477M		1	BOLT, TRIM TAB ATTACHING
57	12-81650M		1	THRUST WASHER, FORWARD
58	23-82797M		1	SPACER, PROPELLER NUT
59	23-82796M		1	THRUST WASHER, REAR
60	11-81774M		1	NU:T, PROPELLER
61	18-82800M		1	PIN, COTTER
62	26-81607M		1	SEAL, WATER TUBE
63	32-81605M		1	TUBE, WATER (SHORT SHAFT)
	32-81606M		1	TUBE, WATER (LONG SHAFT)
64	17-82364M		2	PIN, DOWEL
65	22-80218M		1	PLUG, WATER FLUSH (OPTIONAL)
	27-84177M		1	GASKET SET, LOWER UNIT
	84185M		1	REPAIR KIT, WATER PUMP

CONTINUED ON NEXT PAGE ➡

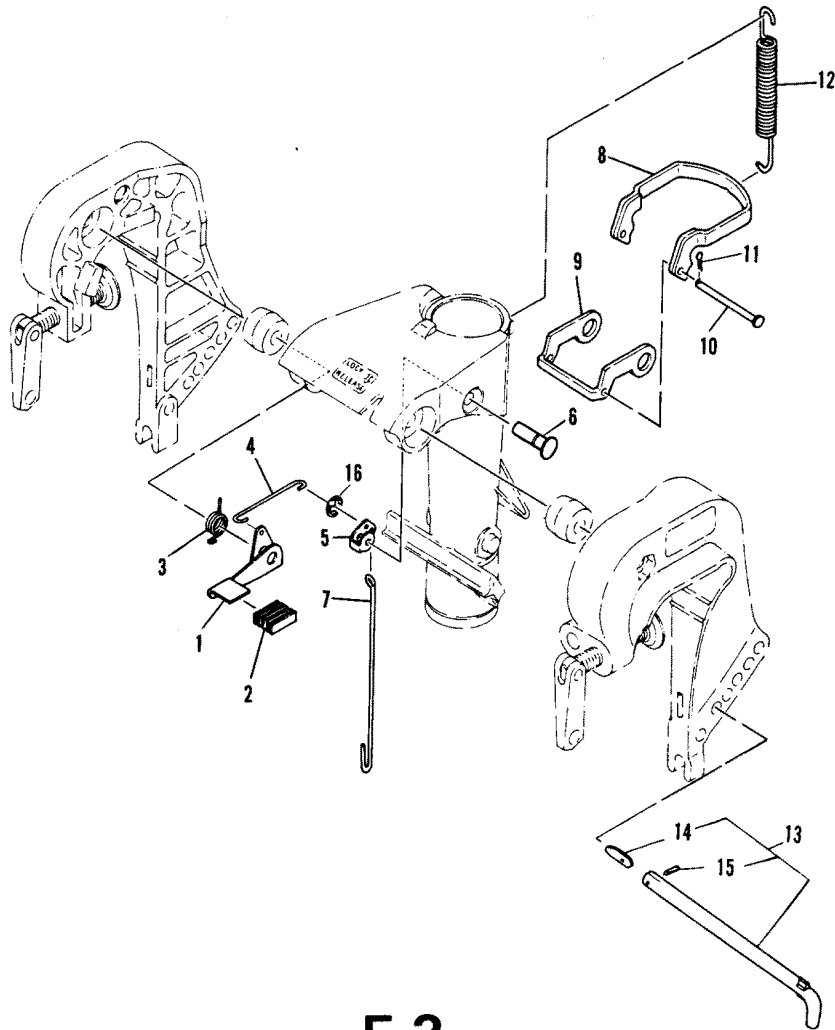
CLAMP AND SWIVEL BRACKET



CLAMP AND SWIVEL BRACKET

REF. NO.	PART NO.	SYM.	QTY.	DESCRIPTION
1	1485-6796M		1	SWIVEL BRACKET
2	22-81917M		1	PLUG
3	22-82369M		2	FITTING, PIVOT SHAFT BUSHING, GREASE
4	81439M		2	CAP, GRTEASE FITTING
5	80633M		1	P:LATE, FRICTION
6	10-81754M		1	SCREW
7	13-82215M		1	WASHER, LOCK
8	24-82088M		1	SPRING, FRICTION PLATE SCREW
9	80632M		1	SHAFT, STEERING PIVOT
10	17-82368M		2	PINK DOWEL
11	12-81873M		1	COLLAR, THRUST & PIVOT SHAFT
12	23-81964M		1	BUSHING, PIVOT SHAFT-UPPER
13	17-81887M		1	PIN
14	23-81959M		1	BUSHING, PIVOT SHAFT-LOWER
15	25-82274M		1	O-RING, PIVOT SHAFT BUSHING
16	23-81961M		1	COLLAR, THRUST-PIVOT SHAFT
17	1484-6794M		1	CLAMP BRACKET, PORT
18	1484-6795M		1	CLAMP BRACKET, STARBOARD
19	80048M		2	HANDLE, TRANSOM CLAMP SCREW
20	10-81756M		2	SCREW, TRANSOM CLAMP
21	12-80638M		2	PAD, TRANSOM CLAMP SCREW
22	17-81888M		2	PIN, ROLL
23	17-81150M		1	SHAFT, TILT STOP
24	80641M		1	KNOB, TILT STOP SHAFT
25	17-82148M		1	PIN
26	10-81146M		1	BOLT
27	80639M		2	MOUNT, RUBBER CLAMP BRACKET
28	12-81806M		1	WASHER
29	24-82101M		1	SPRING
30	11-82395M		1	NUT
31	10-82924M		1	BOLT, CLAMP BRACKET
32	23-81979M		1	SPACEER, CLAMP BRACKET STUD
33	11-82392M		1	NUT

REVERSE LOCK



28 HP

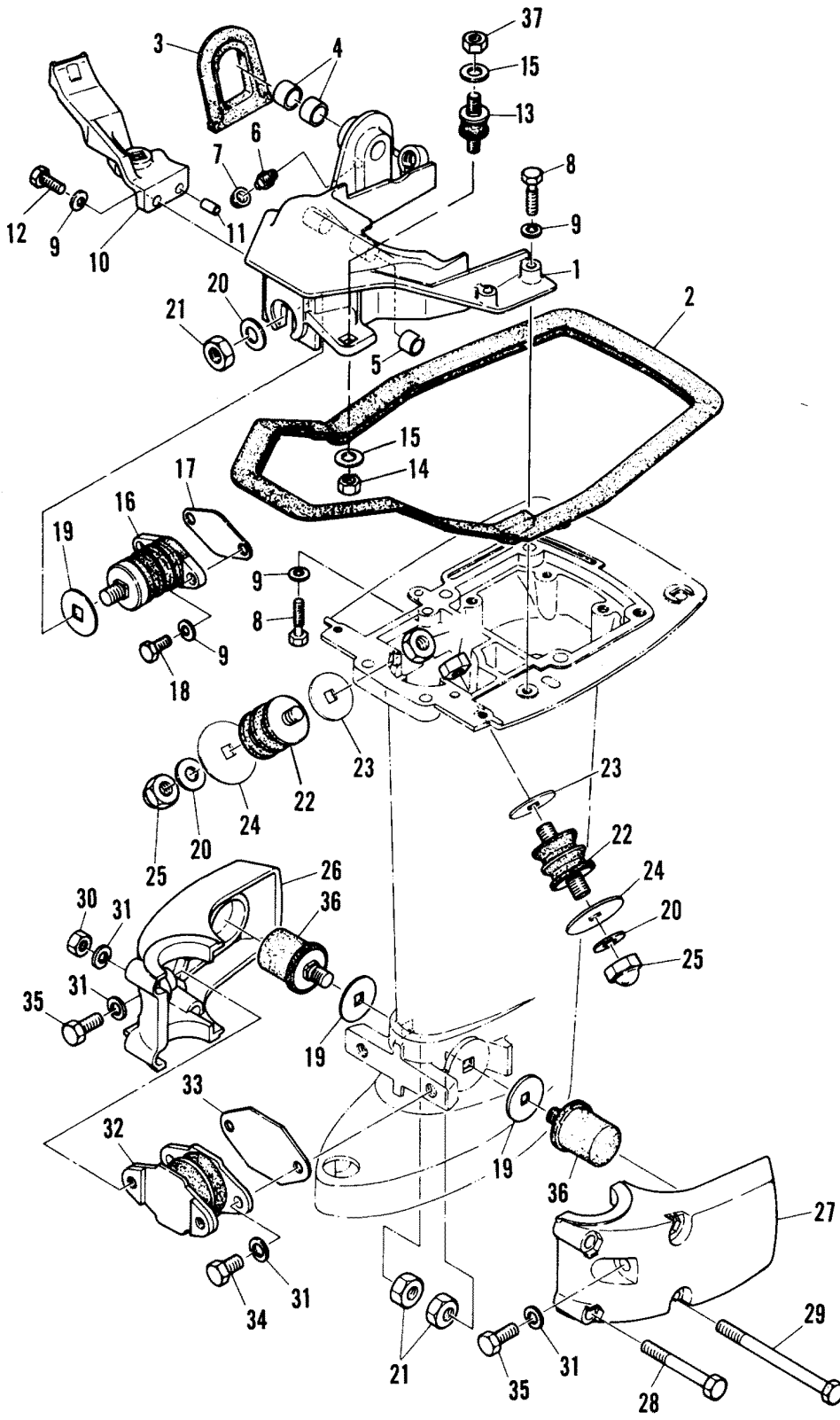
19

E-3

REVERSE LOCK

REF. NO.	PART NO.	SYM.	QTY.	DESCRIPTION
1	80646M		1	LEVER, LOCK/RELEASE
2	80647M		1	COVER, LEVER
3	24-82109M		1	SPRING, TENSION
4	80644M		1	LINK, REVERSE LOCK LEVER
5	80648M		1	CAM ,TILT
6	17-81895M		1	PIN
7	80645M		1	ROD, REVERSE LOCK LEVER
8	80642M		1	HOOK, REVERSE LOCK-REAR
9	80643M		1	HOO, REVERSE LOCK-FRONT
10	17-81882M		1	PIN
11	M-82125M		1	PIN
12	24-82105M		1	SPRING, REVERSE LOCK
13	17-83994M		1	TILT LOCK PINI ASS'Y SERIAL 00156656-09999999
	17-82786M		1	TILT LOCK PIN ASS'Y SERIAL 00000000-00156655
14	82857M		1	STOPPER, PLATE
15	17-82144M		1	PIN
16	53-82330M		1	SNAP RING

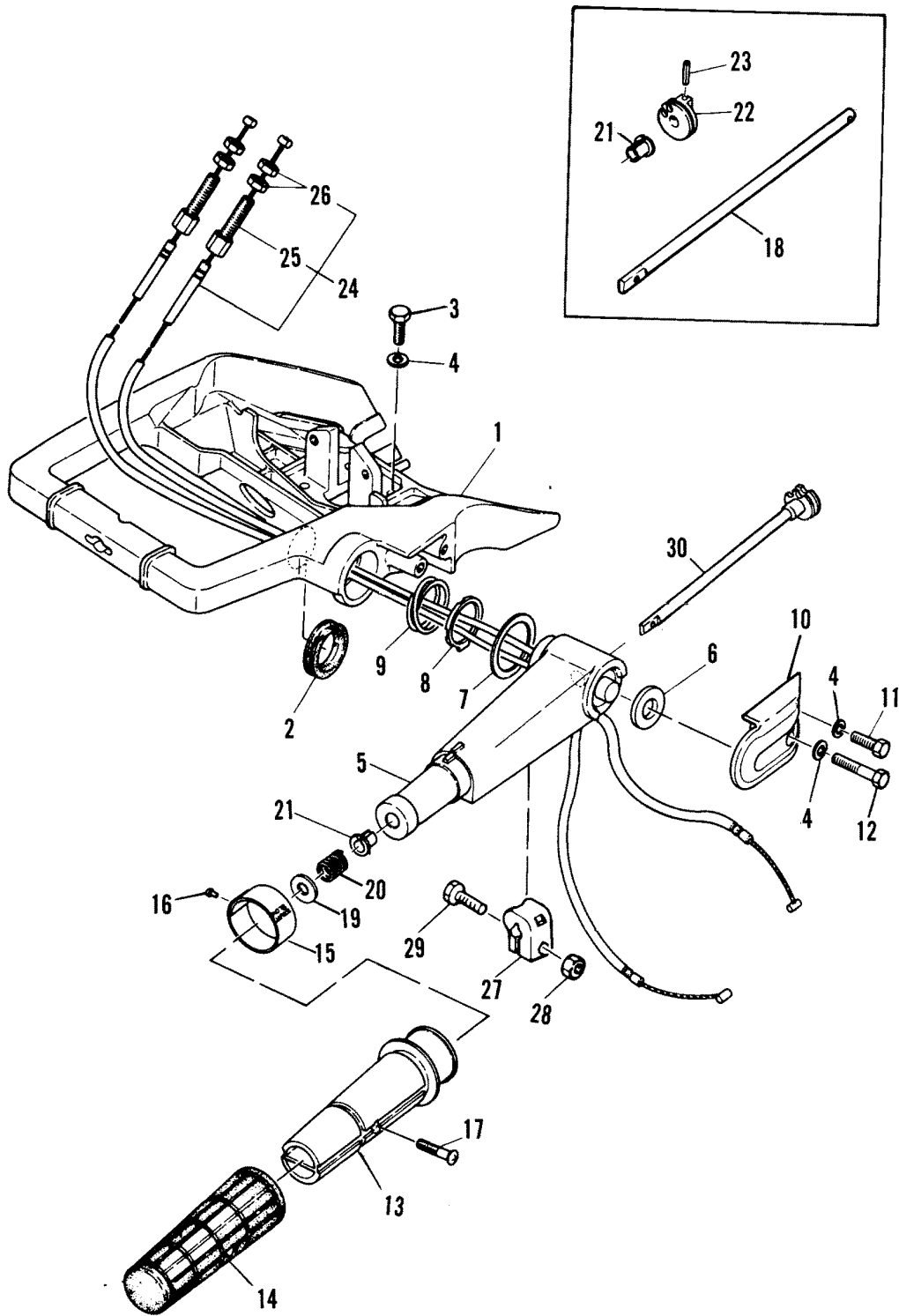
MOUNTING SYSTEM



MOUNTING SYSTEM

REF. NO.	PART NO.	SYM.	QTY.	DESCRIPTION
1	80654M		1	BRACKET, MOUNTING
2	27-80636M		1	GASKET, BOTTOM BOWL
3	25-80637M		1	SEAL, SHIFT BRACKET
4	23-81930M		2	BUSHING, SHIFT ROD LEVER
5	23-83309M		2	BUSHING, MOUNT
6	22-82369M		1	FITTING, GREASE
7	81439M		1	CAP, GREASE FITTING
8	10-82453M		4	BOLT
9	13-82212M		7	WASHER, LOCK
10	80657M		1	BRACKET, CABLE ANCHOR
11	17-82364M		1	PIN, DOWEL
12	10-82451M		1	BOLT
13	80656M		4	MOUNT, RUBBER-UPPER
14	11-82393M		4	NUT
15	12-82217M		8	WASHER
16	81608M		1	MOUNT, RUBBER-UPPER FRONT
17	27-80663M		1	GASKET, MOUNT
18	10-83395M		2	BOLT
19	27-80662M		3	WASHER
20	12-82219M		3	WASHER
21	11-82182M		5	NUT
22	82557M		2	MOUNT, RUBBER-LOWER SIDE
23	27-80662M		2	WASHER
24	27-81612M		2	WASHER
27	11-82183M		2	NUT
26	81609M		1	HOUSING, LOWER MOUNT-STARBOARD
27	81610M		1	HOUSING, LOWER MOUNT-PORT
28	10-82470M		2	BOLT
29	10-82473M		2	BOLT
30	11-82392M		4	NUT
31	13-82215M		8	WASHER, LOCK
32	80661M		1	MOUNT, RUBBER-LOWER FRONT
33	27-80664M		1	GASKET, RUBBER MOUNT
34	10-82462M		2	BOLT
35	10-82463M		2	BOLT
36	81611M		2	MOUNT, RUBBER-HOUSING
37	11-82383M		4	NUT

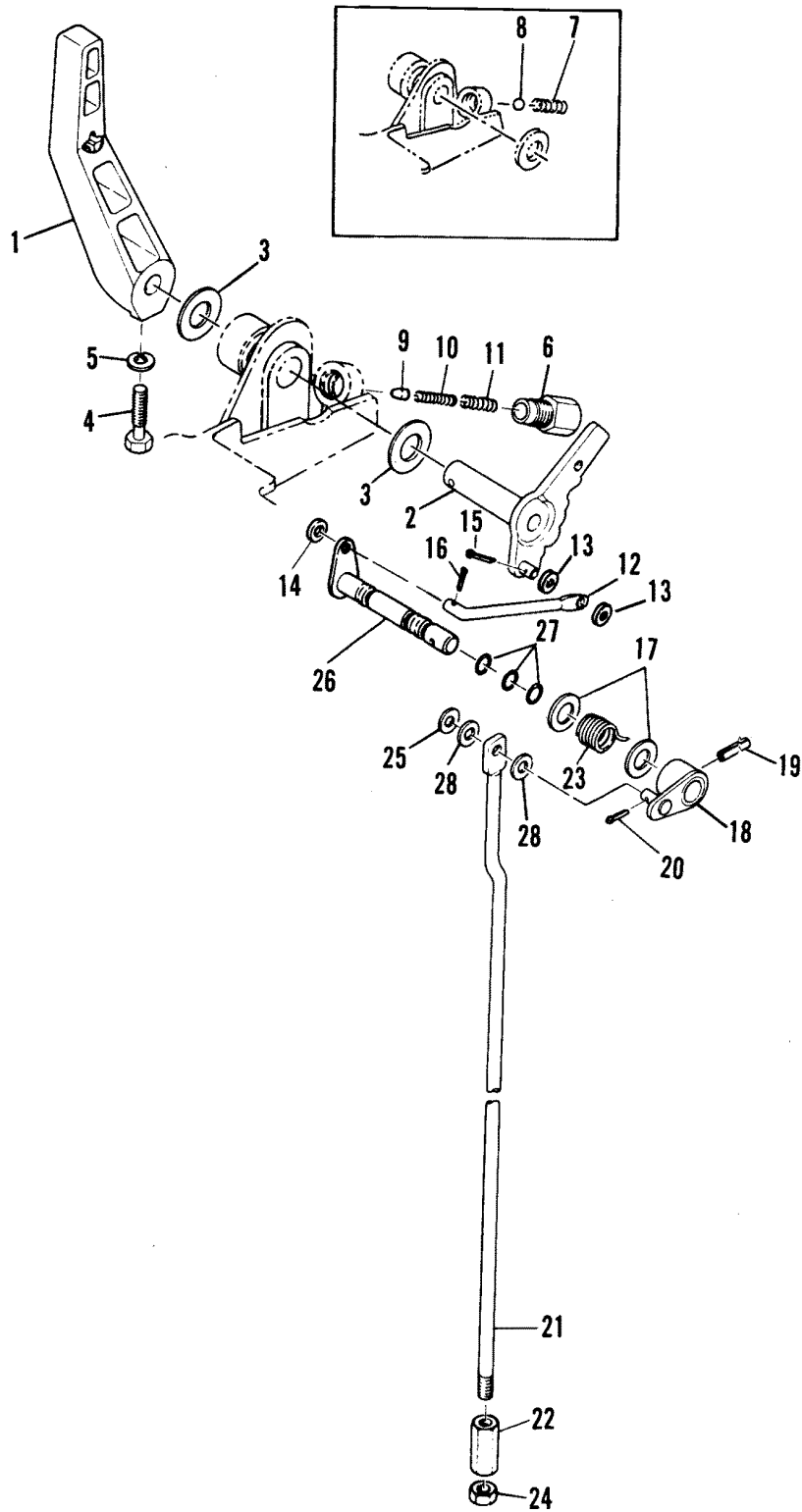
STEERING HANDLE



STEERING HANDLE

REF. NO.	PART NO.	SYM.	QTY.	DESCRIPTION
1	81138M		1	BRACKET, STEERING
2	25-82070M		1	GROMET, STEERING HANDLE
3	10-82452M		4	BOLT
4	13-82212M		6	WASHER, LOCK
5	81583M		1	ARM, STEERING
6	23-82119M		1	SPACER, STEERING ARM
7	23-81861M		1	SPACER, STEERING ARM
8	23-81136M		1	RETAINER, COMPRESSION SPRING
9	24-82093M		1	SPRING, COMPRESSION
10	81129M		1	RETAINER, STEERING ARM
11	10-83539M		1	BOLT
12	10-83285M		1	BOLT
13	81585M		1	HANDLE, THROTTLE
14	80509M		1	GRIP, THROTTLE HANDLE
15	81586M		1	INDICATOR, THROTTLE
16	17-81907M		1	RIVER
17	10-82483M		1	SCREW
18	81584M		1	SHAFT, THROTTLE SERIAL 00000000-00010710
19	12-82204M		1	WASHER, THROTTLE SHAFT
20	24-82095M		1	SPRING
21	23-81945M		1	BUSHING, STEERING ARM SERIAL 00010711-09999999
	23-81945M		1	BUSHING, STEERING ARM SERIAL 00000000-00010710
22	80631M		1	CAM, THROTTLE SERIAL 0A000000-EL059790
23	17-82151M		1	PIN () AND BELOW SERIAL 00000000-00010710
24	81567M		2	CABLE, THROTTLE
25	10-81747M		2	ADJUSTER, CABLE
26	11-81765M		4	NUT
27	82895M		1	PIECE, FRICTION
28	11-83056M		1	NUT
29	10-82452M		1	BOLT
30	84457M		1	LEVER, THROTTLE SERIAL 00010711-09999999

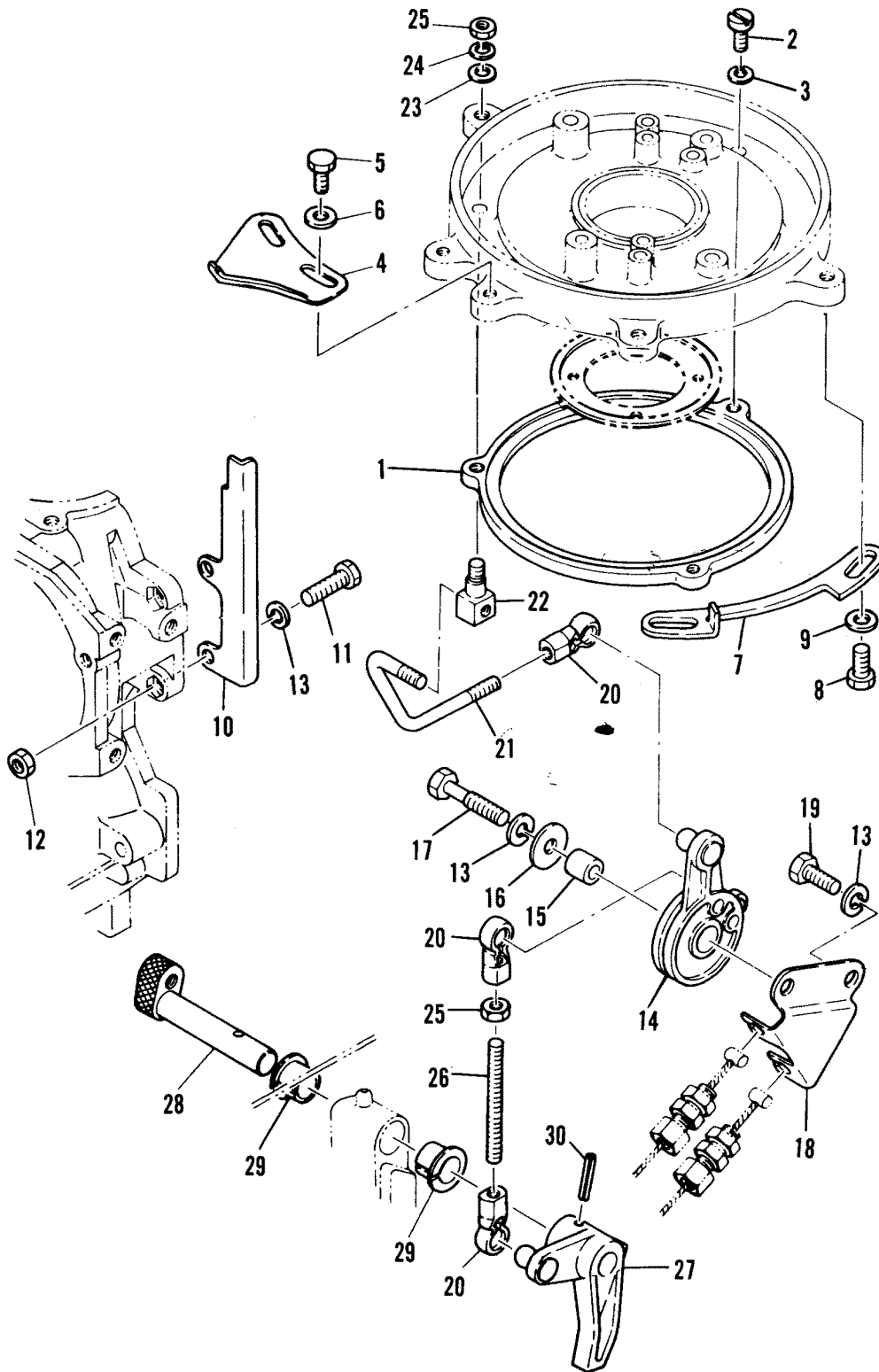
GEAR SHIFT LINKAGE



GEAR SHIFT LINKAGE

REF. NO.	PART NO.	SYM.	QTY.	DESCRIPTION
1	81151M		1	HANDLE, GEAR SHIFT
2	84458M		1	CAM, SHAFT SERIAL 00154806-09999999
	81152M		1	CAM, SHIFT SERIAL 00000000-00154805
3	12-81851M		2	WASHER
4	10-82453M		1	BOLT
5	13-82212M		1	WASHER, LOCK
6	84459M		1	RETAINER, SHIFT DETENT SERIAL 00154806-09999999
	23-80635M		1	RETAINER, SHIFT DETENT SERIAL 00000000-00154805
7	24-82085M		1	SPRING, SHIFT DETENT SERIAL 00000000-00154805
8	82346M		1	BALL, SHIFT DETENT SERIAL 00000000-00154805
9	84460M		1	PLUNGER, SHIFT CAM SERIAL 00154806-09999999
10	24-84461M		1	SPRING, COMPRESSION SERIAL 00154806-09999999
11	24-84462M		1	SPRING, COMPRESSION SERIAL 00154806-09999999
12	81595M		1	LINK ROD, SHIFT
13	12-81843M		2	WASHER
14	12-82211M		1	WASHER
15	18-82125M		1	PIN, SHIFT CAM
16	18-82124M		1	PIN (COTTER)
17	12-81846M		2	WASSHER
18	81594M		1	SWIVEL, SHIFT ROD
19	17-82155M		1	PIN, SWIVEL
20	18-82127M		1	PIN
21	81596M		1	SHAFT, SHIFT-UPPER
22	80652M		1	CONNECTOR, SHIFT
23	24-82108M		1	SPRING, TENSION
24	11-81767M		1	NUT
25	12-82209M		1	WASHER
26	84463M		1	LEVER, SHIFT ROD SERIAL 00010711-09999999
	83208M		11	LEVER, SHIFT ROD SERIAL 00000000-00010710
27	25-84464M		3	O-RING SERIAL 00010711-09999999
	25-82260M		3	O-RING SERIAL 00000000-00010710
28	12-81843M		2	WASHER

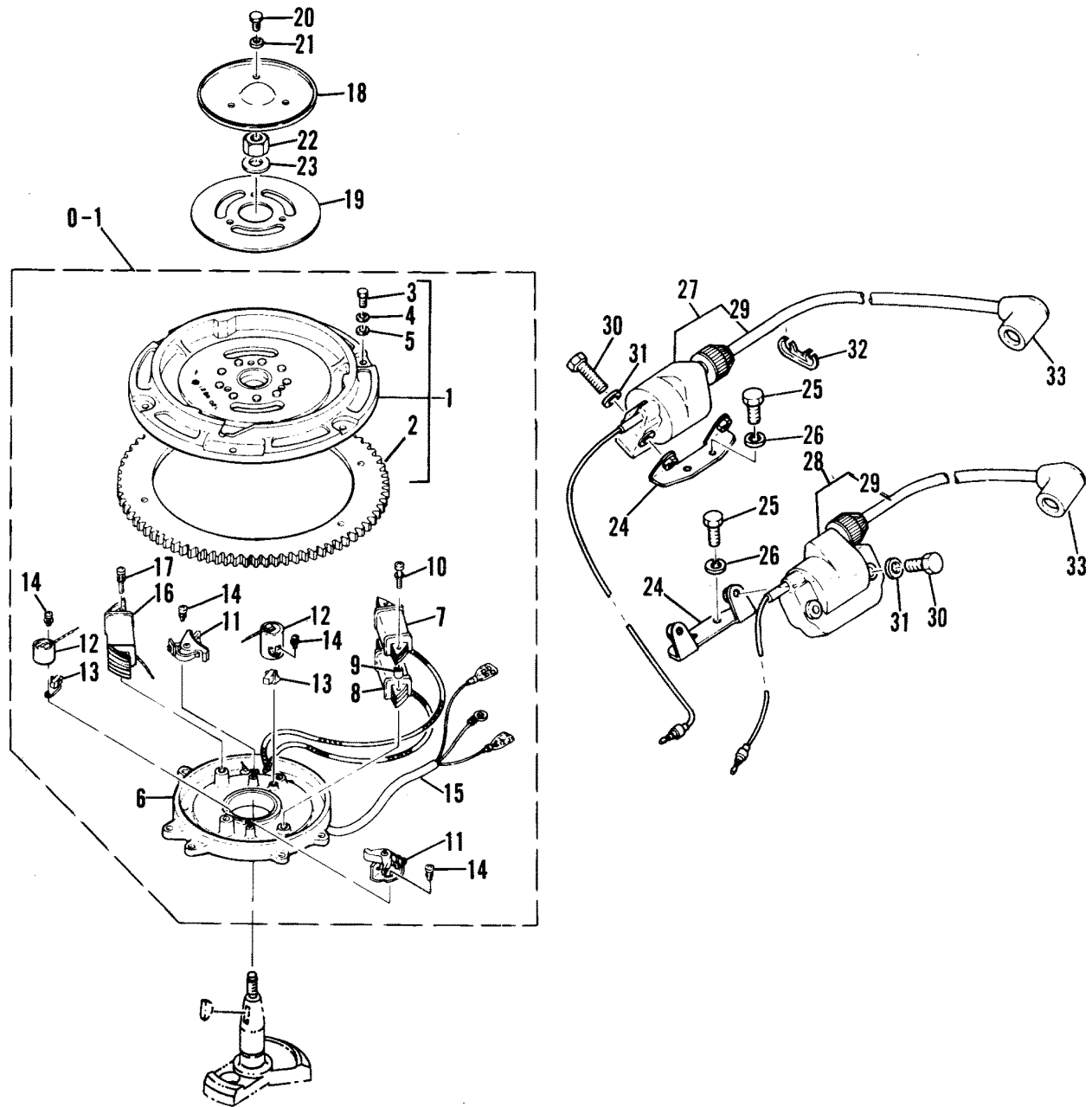
THROTTLE CONTROL



THROTTLE CONTROL

REF. NO.	PART NO.	SYM.	QTY.	DESCRIPTION
1	83210M		1	RETAINER, MAGNETO BASE-OUTER
2	10-82490M		3	SCREW, BASE ATTACHING
3	13-82193M		3	WASHER, LOCK
4	81575M		1	CAM, THROTTLE ADVANCE
5	10-84313M		2	BOLT
6	12-82196M		2	WASHER
7	83305M		1	STOP, MAGNETO BASE
8	10-84303M		2	BOLT, STOP ATTACHING
9	12-82198M		2	WASHER
10	80628M		1	STOP, MAGNETO BASE
11	10-83539M		2	BOLT
12	11-82380M		2	NUT
13	13-82197M		4	WASHER
14	81581M		1	CAM , MAGNETO CONTROL
16	23-83310M		1	COLLAR
	12-81969M		1	WASHER
17	10-84237M		1	BOLT
18	81563M		1	BRACKET, THROTTLE CABLE
19	10-84211M		1	BOLT
20	81225M		3	SWIVEL
21	81582M		1	LINK ROD, MAGNETO CONTROL
22	80629M		1	SWIVEL, LINK ROD
23	12-81789M		1	WASHER
24	13-82193M		1	WASHER, LOCK
25	11-82378M		2	NUT
26	16-81722M		1	STUD, CAM TO SHAFT
27	83209M		1	ELVER, THROTTLE SHAFT
28	81134M		1	SHAFT, THROTTLE
29	23-81946M		2	BUSHING, THROTTLE SHAFT
30	17-82156M		1	PIN, ROLL

FLYWHEEL MAGNETO

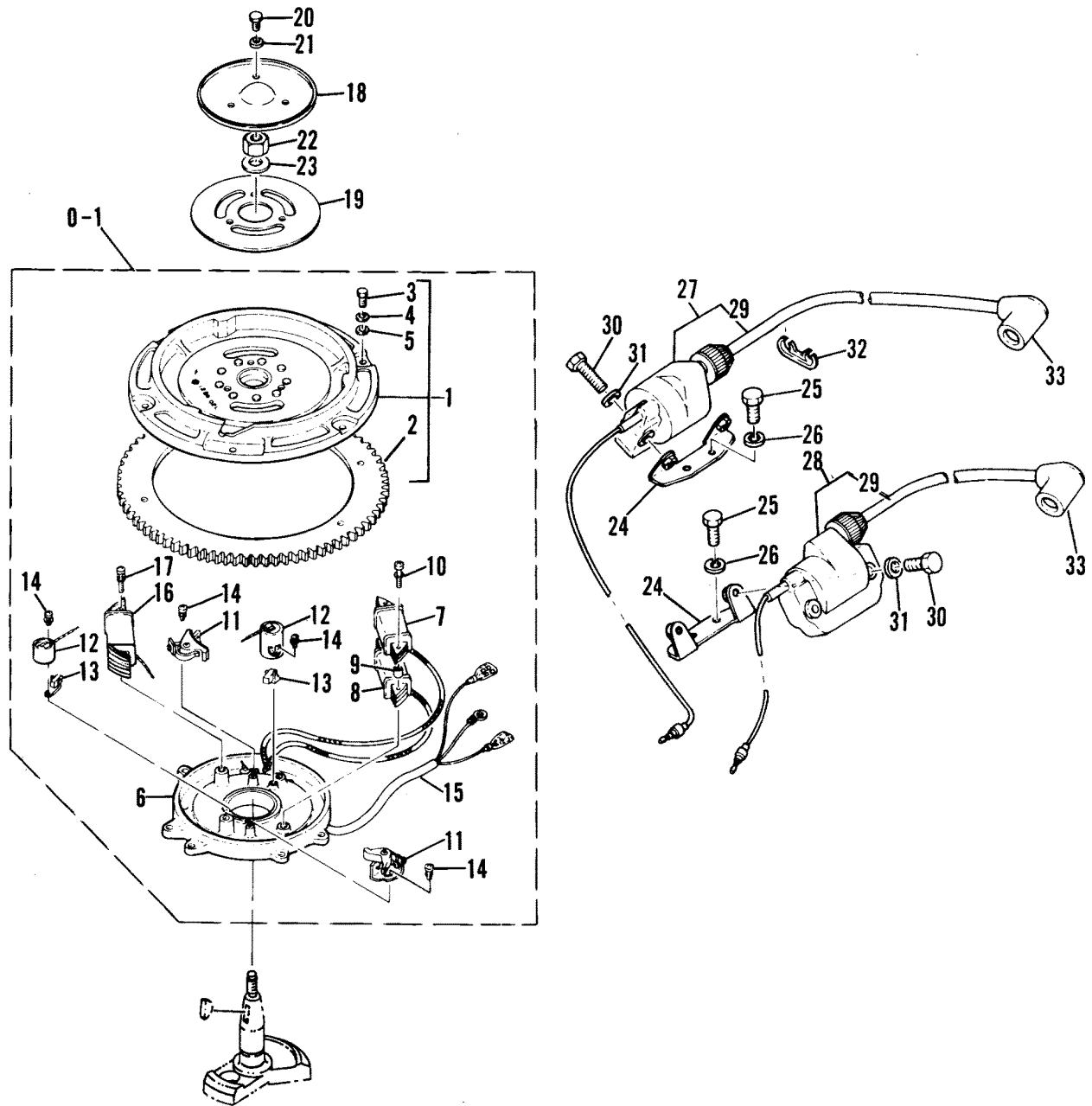


FLYWHEEL MAGNETO

REF. NO.	PART NO.	SYM.	QTY.	DESCRIPTION
0-1	253-7169M		1	FLYWHEEL MAG ASS'Y (MANUAL START MODEL) SERIAL EL570101-0Z999999
	253-6799M		1	FLYWHEEL MAG ASS'Y (MANUAL START MODEL) SERIAL 00000000-00150100
	253-6981M		1	FLYWHEEL MAG ASS'Y (ELECTRIC START MODEL) SERIAL EL570101-0Z999999
	80683M		1	FLYWHEEL MAG ASS'Y (ELECTRIC START MODEL) SERIAL 00000000-00150100
1	253-7171M		1	FLYWHEEL ASS'Y (MANUAL START MODEL) SERIAL EL570101-0Z999999
	253-7170M		1	FLYWHEEL ASS'Y (MANUAL START MODEL) SERIAL 00000000-00150100
	83312M		1	FLYWHEEL ASS'Y (ELECTRIC START MODEL) SERIAL EL570101-0Z999999
	80687M		1	FLYWHEEL ASS'Y (ELECTRIC START MODEL) SERIAL 00000000-00150100
2	43-80711M		1	RING GEAR(ELECTRIC START MODEL)
3	10-82404M		6	BOLT (ELECTRIC START MODEL)
4	13-82197M		6	WASHER, LOCK (ELECTRIC START MODEL)
5	12-82198M		6	WASHER (ELECTRIC START MODEL)
6	80684M		1	BASE, MAGNETO
7	83313M		1	PRIMARY IGNITION COIL, #1 CYL SERIAL EL570101-0Z999999
	80551M		1	PRIMARY IGNITION COIL, #1 CYL SERIAL 00000000-00150100
8	83314M		1	PRIMARY IGNITION COIL, #2 CYL SERIAL EL570101-0Z999999
	80552M		1	PRIMARY IGNITION COIL, #2 CYL SERIAL 00000000-00150100
9	23-80555M		2	SPACER, COILE
10	10-80556M		2	SCREW W/WASHER
11	80930M		2	BREAKER ASS'Y
12	80558M		2	CONDENSER
13	80025M		2	LUBRICATOR
14	10-80023M		4	SCREW W/WASHER
15	84-80685M		1	LEAD WIRE
16	83315M		1	LIGHTING COIL (SEE NOTE) SERIAL EL570101-0Z999999
	80553M		1	LIGHTING COIL (SEE NOTE) SERIAL 00000000-00150100
17	10-82503M		2	SCREW W/WAWSHER
18	80689M		1	COVER, FLYWHEEL
19	27-80690M		1	GASKET, FLYWHEEL COVER
20	10-82421M		3	BOLT, COVER ATTACHING
21	12-82198M		3	WASHER, COVER BOLT
22	11-81770M		1	NUT, FLYWHEEL ATTACHING
23	12-81814M		1	WASHER, FLYWHEEL NUT
24	81657M		2	BRACKET, SECONDARY COIL

CONTINUED ON NEXT PAGE ➡

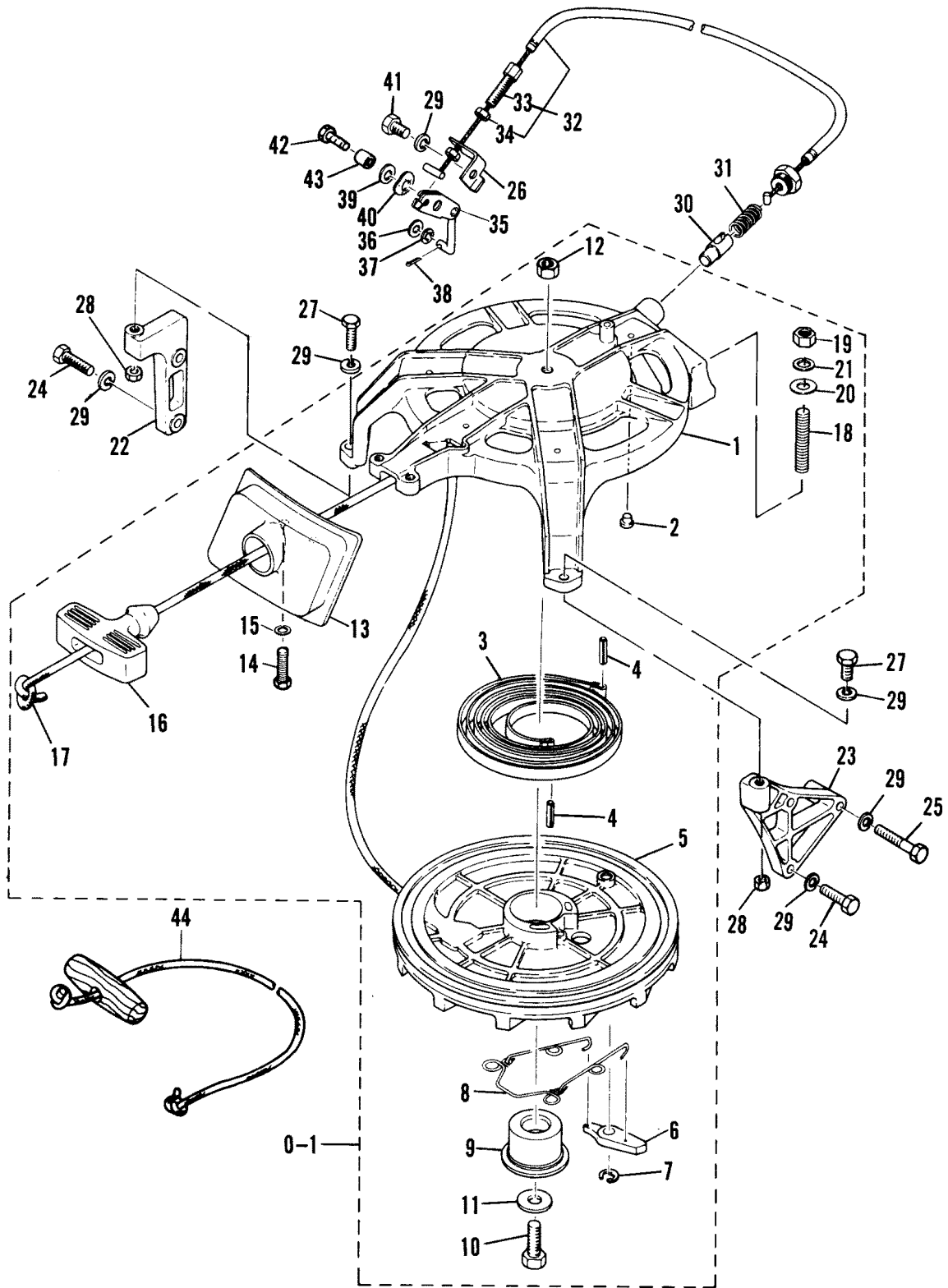
FLYWHEEL MAGNETO



FLYWHEEL MAGNETO

REF. NO.	PART NO.	SYM.	QTY.	DESCRIPTION
25	10-82422M		4	BOLT
26	13-82197M		4	WASHER, LOCK
27	81656M		1	SECONDARY IGNITION COIL ASS'Y #1 CYL
28	83776M		1	SECONDARY IGNITION COIL ASS'Y #2 CYL
29	84-82831M		2	CORD, HIGH TENSION
30	10-82405M		4	BOLT
31	13-82199M		4	WASHER, LOCK
32	82038M		1	CLAMP, HIGH TENSION LEADS
33	82788M		2	PLUG CAP ASS'Y
	80935M		2	PLUG CAP ASS'Y (NOISE SUPPRESSOR)(OPT)

RECOIL STARTER

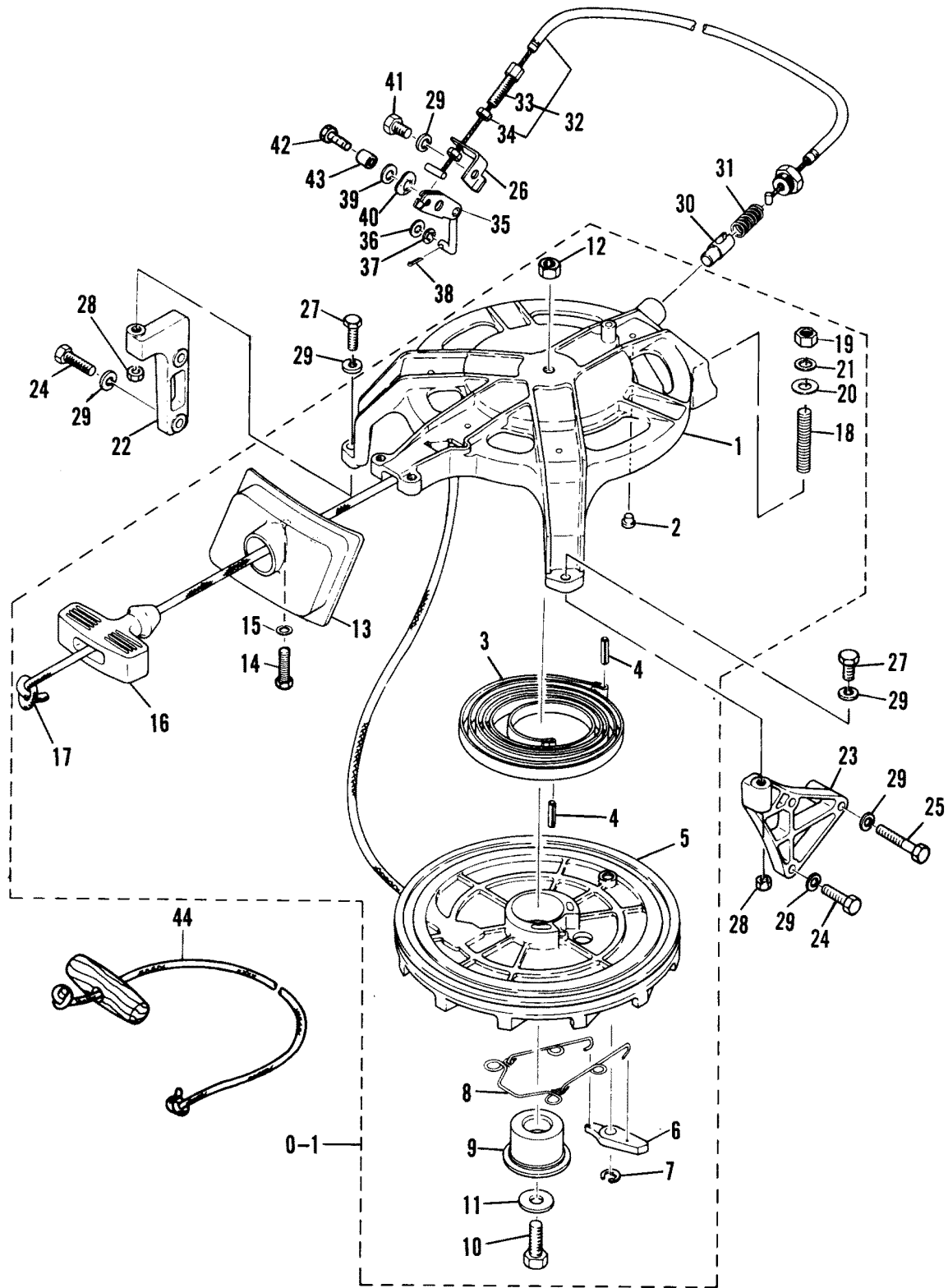


RECOIL STARTER

REF. NO.	PART NO.	SYM.	QTY.	DESCRIPTION
0-1	50-83211M		1	STARTER ASS'Y
1	2169-6960M		1	HOUSING, STARTER
2	19-80604M		6	PLUS, STARTER HOUSING
3	24-82115M		1	SPRING, STARTER
4	17-82157M		2	PIN
5	50-81105M		1	STARTER SHEAVE
6	80599M		1	PAWL, STARTER
7	53-82331M		1	SNAP RING
8	24-81103M		1	SPRING, PAWL
9	80598M		1	SHAFT, RSHEAVE
10	10-84342M		1	BOLT
11	12-81801M		1	WASHER
12	11-82382M		1	NUT
13	80600M		1	GUIDE, STARTER ROPE
14	10-82422M		2	BOLT
15	13-82197M		2	WASHER, LOCK
16	80063M		1	HANDLE, STARTER
17	79629A1		1	STARTER ROPE
18	16-83317M		1	BOLT
19	11-82382M		1	NUT
20	12-82201M		1	WASHER
21	13-82200M		1	WASHER, LOCK
22	80602M		1	BRACKET, STARTER HSG (STARBOARD) SERIAL 0000000-00152830
	84465M		1	BRACKET, STARTER HOUSING (STARBOARD) SERIAL 00152831-09999999
23	80603M		1	BRACKET STARTER HSG (PORT MANUAL) SERIAL 0000000-00152830
	84466M		1	BRACKET, STARTER HSG (PORT MANUAL) SERIAL 00152831-09999999
24	10-82405M		4	BOLT
25	10-82428M		1	BOLT
26	81109M		1	BRACKET, STARTER LOCKOUT (MANUAL)
27	10-82424M		2	BOLT SERIAL 0A000000-EL571340
	10-82437M		2	BOLT SERIAL 00152831-09999999
28	11-82380M		2	NUT SERIAL 00152831-09999999
29	13-82197M		8	WASHER, LOCK (MANUAL)
	13-82197M		7	WASHER, LOCK (ELECTRIC)
30	81106M		1	PLUNGER, STARTER LOCKOUT
31	24-82079M		1	SPRING, STARTER LOCKOUT
32	81108M		1	CABLE, STARTER LOCKOUT
33	10-81746M		1	BOLT
34	11-82380M		2	NUT
35	81107M		1	LINK, STARTER LOCKOUT

CONTINUED ON NEXT PAGE ➡

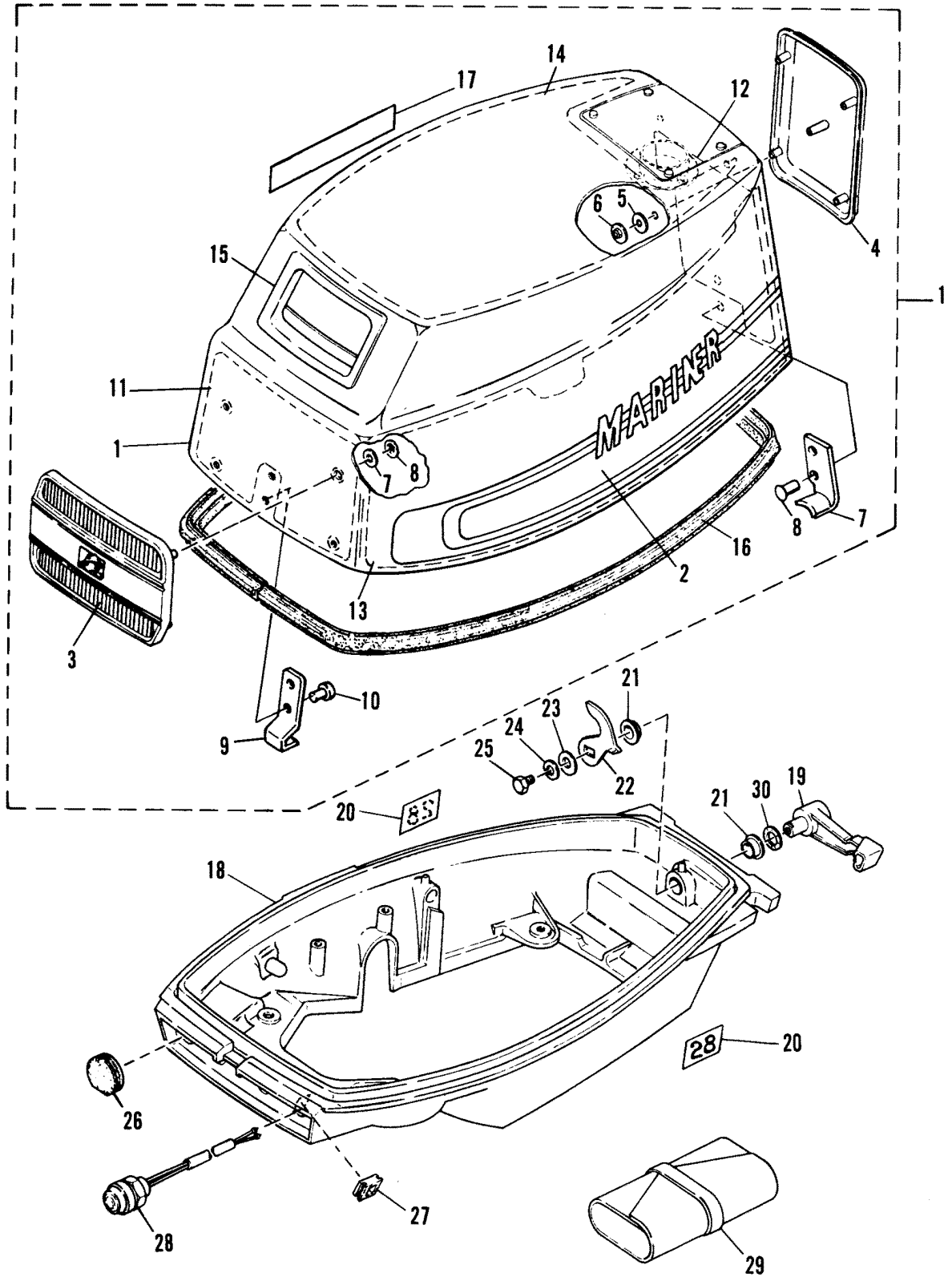
RECOIL STARTER



RECOIL STARTER

REF. NO.	PART NO.	SYM.	QTY.	DESCRIPTION
36	12-82196M		1	WASHER
37	13-81865M		1	WASHER, WAVE
38	18-82125M		1	PIN
39	13-82199M		1	WASHER, LOCK
40	13-81867M		1	WASHER, WAVE
41	10-84303M		1	BOLT, (MANUAL)
42	10-83539M		1	BOLT
43	23-82929M		1	COLLAR
44	47341A1		1	EMERGENCY STARTER ROPE

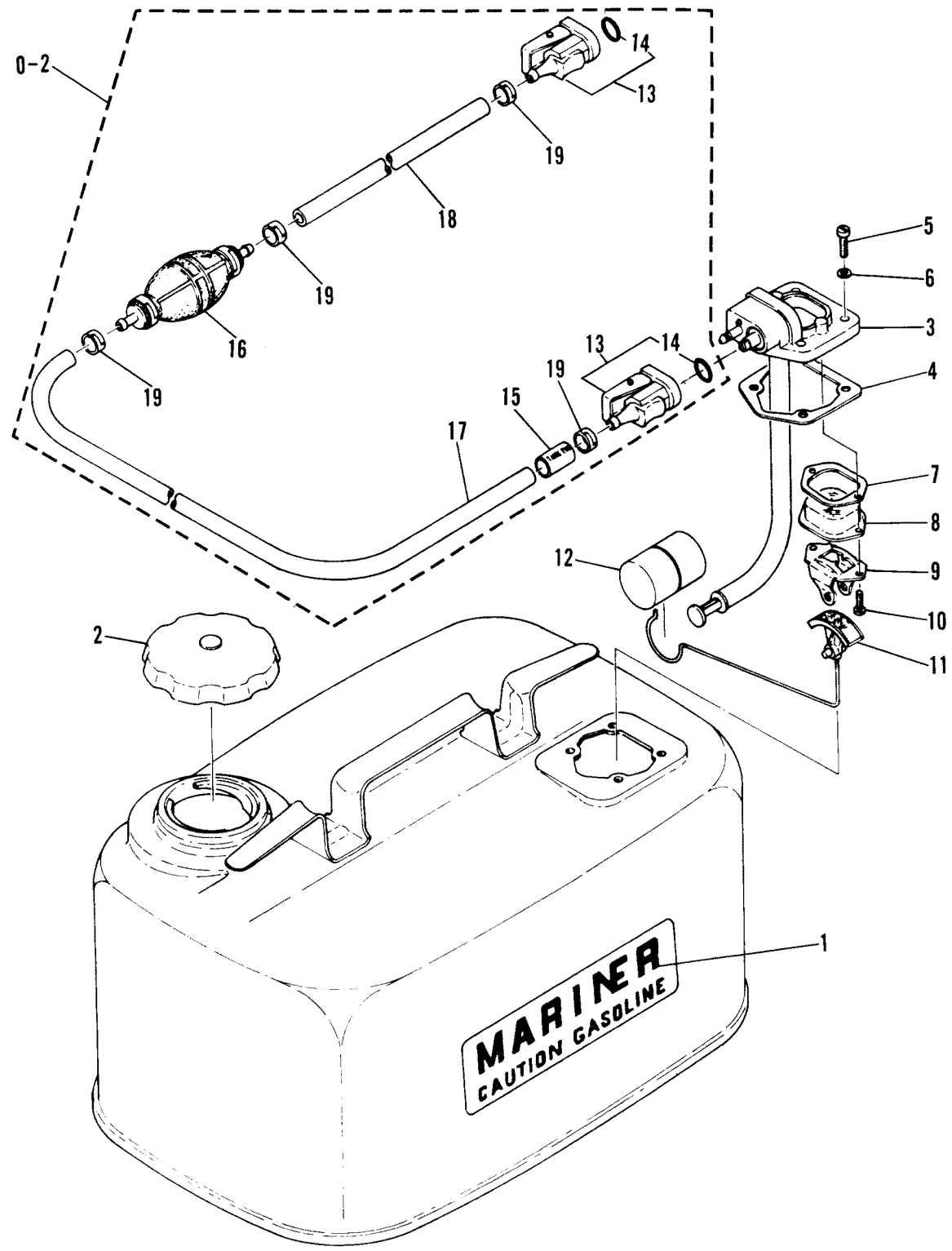
COWLING



COWLING

REF. NO.	PART NO.	SYM.	QTY.	DESCRIPTION
1	2168-6852M		1	TOP COWL ASS'Y
2	67-81114M		1	DECAL, SIDE SET
3	82898M		1	APPLIQUE, FRONT
4	82913M		1	APPLIQUE, REAR
5	12-80884M		10	WASHER, APPLIQUE NUT
6	11-82927M		10	NUT, APPLIQUE ATTACHING
7	83212M		1	HOLDER, CLAMP BAND
8	17-83143M		1	RIVET
9	83137M		1	HOOK
10	17-83140M		2	RIVET
11	83319M		1	SOUND BLANKET
12	83320M		1	SOUND BLANKET
13	83321M		2	SOUND BLANKET
14	83322M		1	SOUND BLANKET
15	80601M		1	SEAL, RUBBER-STARTER
16	80634M		1	SEAL, TOP COWL
17	37-81202M		1	INDICATOR, SHIFT
18	M-6853		1	BOTTOM COWL
19	81591M		1	LEVER, COWL CLAMP
20	37-82915M		2	GRAPHIC, SIDE
21	23-81949M		2	BUSHING, COWL CLAMP LEVER
22	81145M		1	CLAMP, COWL
23	12-81794M		1	WASHER
24	13-82212M		1	WASHER, LOCK
25	10-84315M		1	BOLT
26	25-81589M		1	GROMMET, BOTTOM COWL (MANUAL)
27	25-82064M		1	GROMMET, BOTTOM COWL
28	87-81662M		1	STOP SWITCH (MANUAL)
29	91-81669M		1	TOOL KIT
30	13-81869M		1	WASHER, WAVE

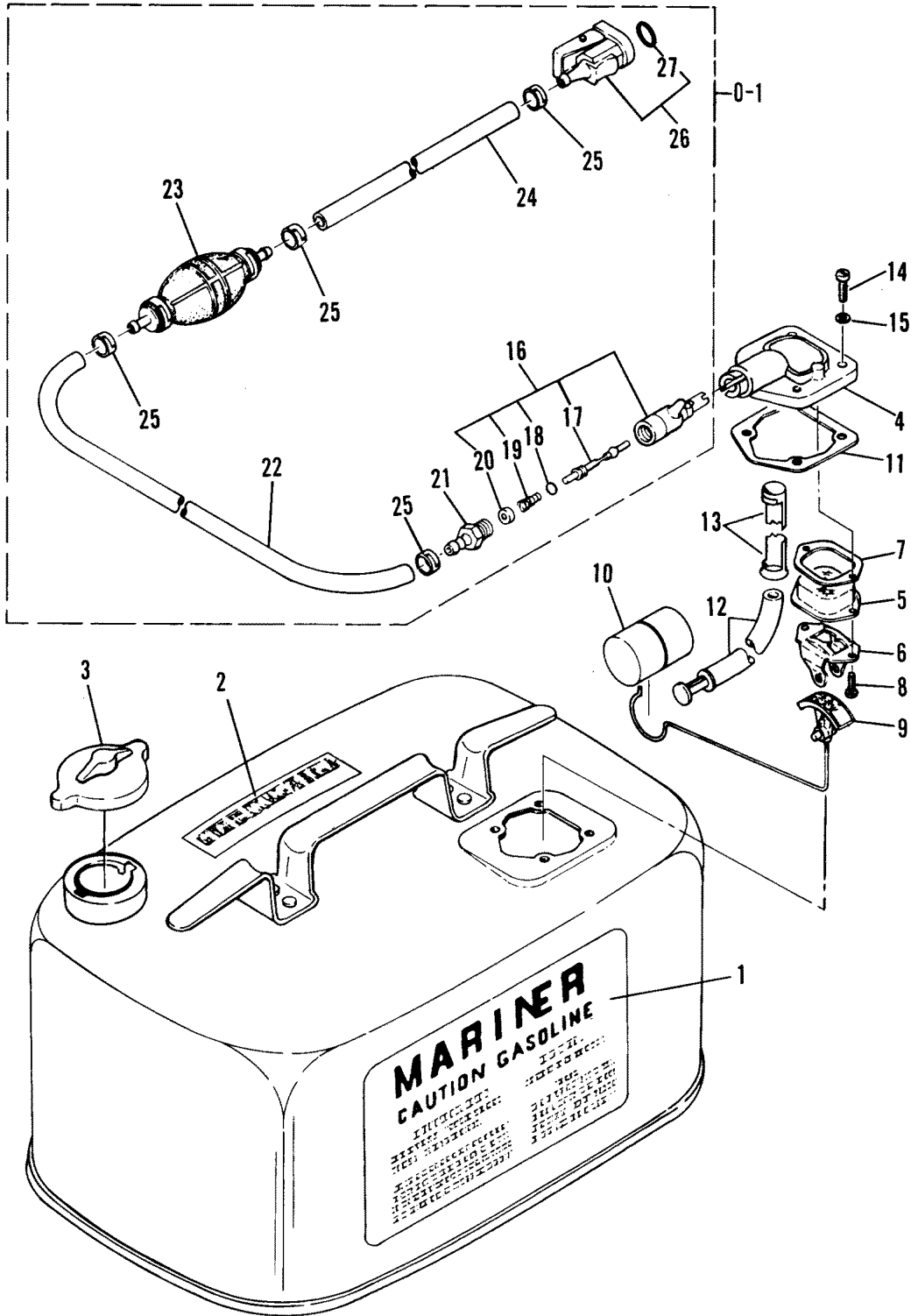
FUEL TANK-INTERNATIONAL ONLY (ORIGINAL EQUIP) 24 LITRE (6.3)



FUEL TANK-INTERNATIONAL ONLY (ORIGINAL EQUIP) 24 LITRE (6.3)

REF. NO.	PART NO.	SYM.	QTY.	DESCRIPTION
0-1	1252-6836M		1	FUEL TANK ASS'Y
1	37-83213M		2	GRAPHIC, SIDE
2	81318M		1	INDICATOR
3	81319M		1	FLOAT, INDICATOR
4	81694M		1	FUEL TANK CAP ASS'Y
5	81321M		1	HOUSING, FUEL CONNECTOR
6	27-81320M		1	GASKET, HOUSING TO TANK
7	10-82526M		4	SCREW, HOUSING ATTACHING
8	12-80271M		4	WASHER, HOUSING SCREW
9	27-80270M		1	GASKET, HOUSING TO LENS INDICATOR
10	80269M		1	LENS, INDICATOR
11	80268M		1	SUPPORT, INDICATOR
12	10-82518M		2	SCREW, SUPPORT ATTACHING
0-2	32-83192M		1	FUEL HOSE ASS'Y
13	22-81042M		2	CONNECTOR HOUSING
14	25-82789M		2	O-RING
15	23-81327M		1	SLEEVE, HOSE
16	81325M		1	BULB, PRIMER
17	32-82025M		1	HOSE (CONNECTOR HOUSING TO BULB)
18	32-82023M		1	HOSE, BULB TO CONNECTOR
19	54-80752M		4	CLAMP, HOSE

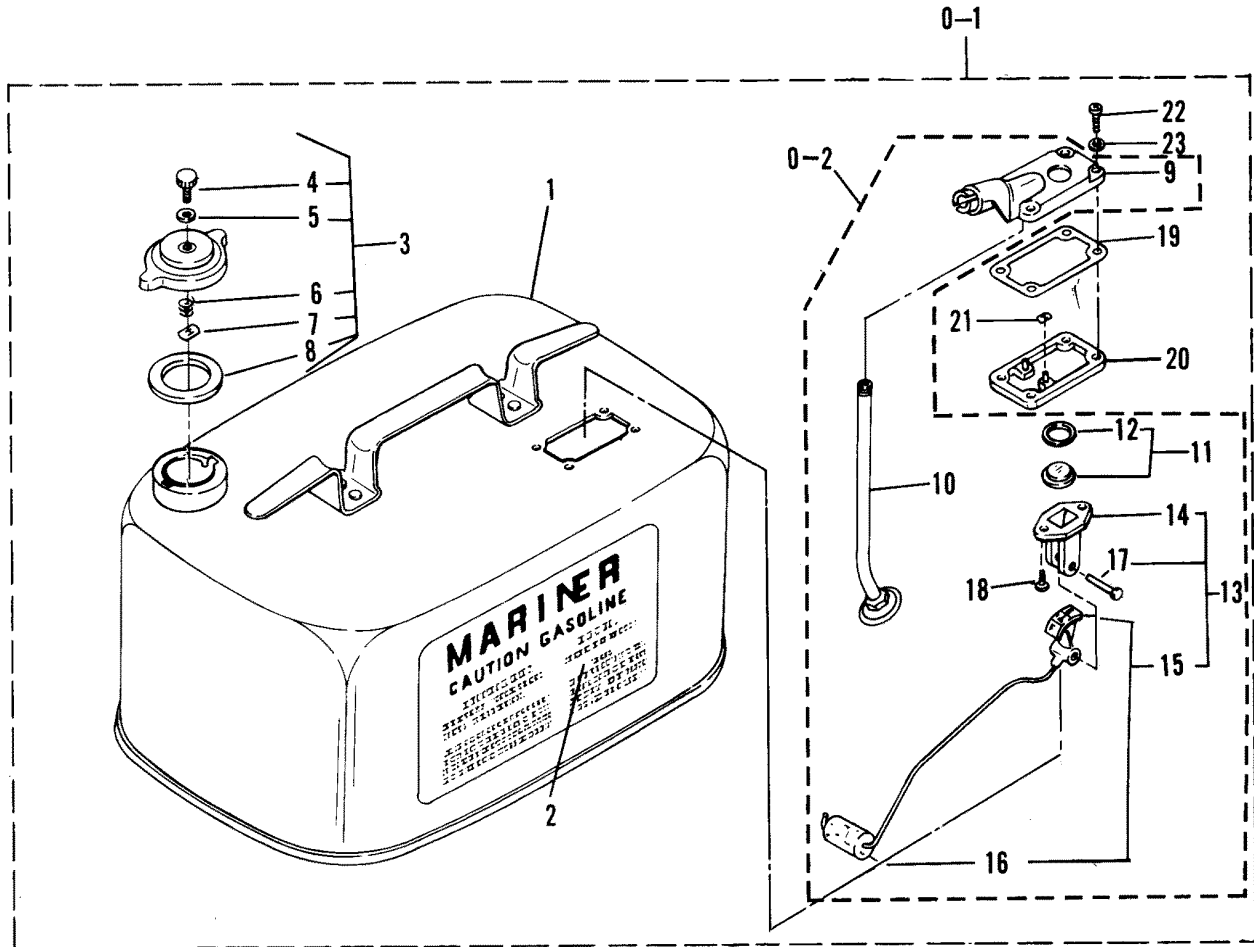
FUEL TANK-INTERNATIONAL AND USA (ORIGINAL EQUIP) 24 LITRE



FUEL TANK-INTERNATIONAL AND USA (ORIGINAL EQUIP) 24 LITRE

REF. NO.	PART NO.	SYM.	QTY.	DESCRIPTION
1	37-82984M		1	DECAL, SIDE
2	37-82962M		1	DECAL, TOP
3	36-83617M		1	FUEL TANK CAP
4	83618M		1	FUEL METER
5	80269M		1	LENS, INDICATOR
6	80268M		1	BRACKET, INDICATOR
7	27-80270M		1	GASKET, HOUSING TO LEN INDICATOR
8	10-82518M		2	SCREW
9	81318M		1	INDICATOR, FUEL LEVEL
10	81319M		1	FLOAT, INDICATOR
11	27-81320M		1	GASKET, HOUSING TO TANK
12	32-83626M		1	HOSE, PICKUP
13	54-83764M		1	CLAMP, PICKUP HOSE
14	10-82526M		4	SCREW, HOUSING ATTACHING
15	12-80271M		4	WASHER, HOUSING SCREW
0-1	32-83628M		1	FUEL LINE ASS'Y
16	30185A1		1	BAYONET BODY ASS'Y
17	30187		1	STEM, BAYONET BODY
18	25-20415		1	O-RING, BAYONET BODY STEM
19	24-30189		1	SPRING, BAYONET BODY STEM
20	30188		1	WASHER, CAP
21	22-63187		1	FITTING,FUEL LINE
22	32-82025M		1	HOSE, CONNECTOR HOUSING TO BULB
23	81325M		1	BULB, PRIMER
24	32-82023M		1	HOSE, BULB TO CONNECTOR
25	54-80752M		4	CLAMP, HOSE
26	22-81042M		1	FUEL CONNECTOR, ENGINE END
27	25-82789M		1	O-RING

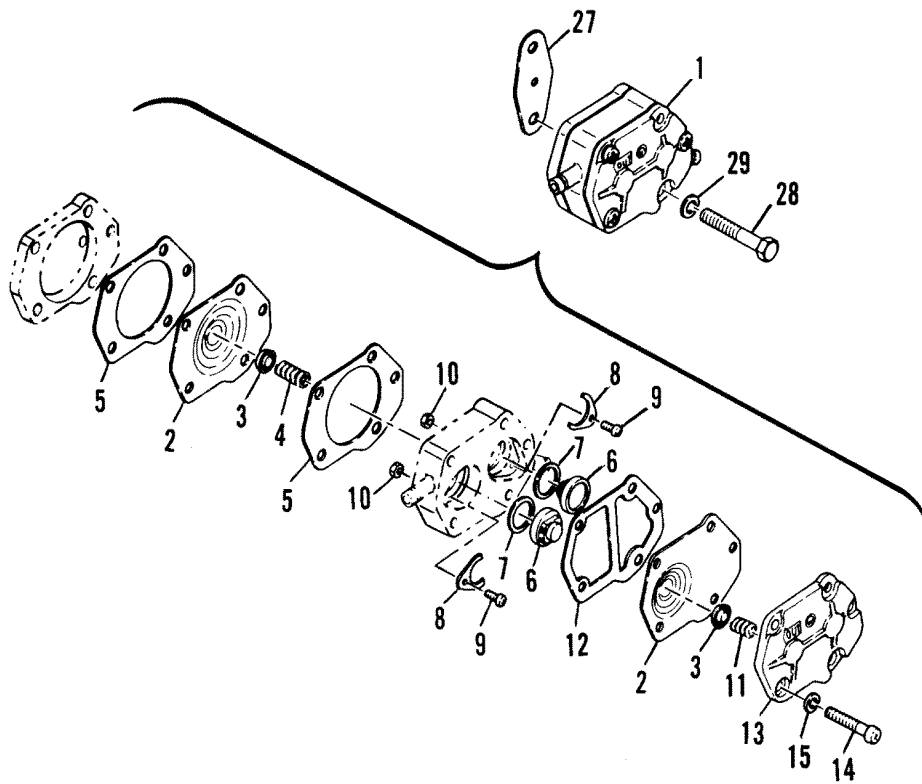
FUEL TANK-REPLACEMENT OR ADDITIONAL 22.7 LITRE (6.0 GALLONS)



FUEL TANK-REPLACEMENT OR ADDITIONAL 22.7 LITRE (6.0 GALLONS)

REF. NO.	PART NO.	SYM.	QTY.	DESCRIPTION
0-1	1225-1529A16		1	FUEL TANK, COMPLETE (SEE NOTE)
1	1225-1529		1	FUEL TANK
2	37-75881		1	DECAL, FUEL TANK
3	36-25392A2		1	FILLER CAP ASSEMBLY
4	10-25575		1	SCREW, VENT-FILLER CAP
5	12-49221		1	WASHER, VENT SCREW
6	24-22227		1	SPRING, TENSION-VENT SCREW
7	11-28587		1	NUT, SPEED-SPRING RETAINER
8	27-25568		1	GASKET, FILLER CAP TO FUEL TANK
0-2	64841A1		1	CONNECTOR/GAUGE ASS'Y, FUEL GAUGE
9	64841A3		1	COVER, FUEL TANK
10	32-33909A3		1	TUBE
11	54920A1		1	LENS ASSEMBLY, FUEL GAUGE
12	27-54921		1	GASKET, FUEL GAUGE LENS
13	28897A2		1	FUEL GAUGE ASSEMBLY, COMPLETE
14	20430		1	RETAINER, FUEL GAUGE
15	28897A1		1	INDICATOR AND FLOAT ASSEMBLY
16	20427		1	FLOAT, FUEL GAUGE
17	17-20426		1	RIVET, INDICATOR TO RETAINER
18	10-62568		2	SCREW, RETAINER TO FUEL TANK COVER
19	27-28862		1	GASKET, COVER ASSEMBLY TO FRAME
20	28860		1	FRAME, RETAINING-FUEL TANK COVER
21	53-28903		2	FASTENER, RETAINING FRAME TO FUEL TANK
22	10-20411		4	SCREW, FUEL TANK COVER TO FUEL TANK
23	12-74711		4	WASHER, FUEL TANK COVER FASTENING SCREW

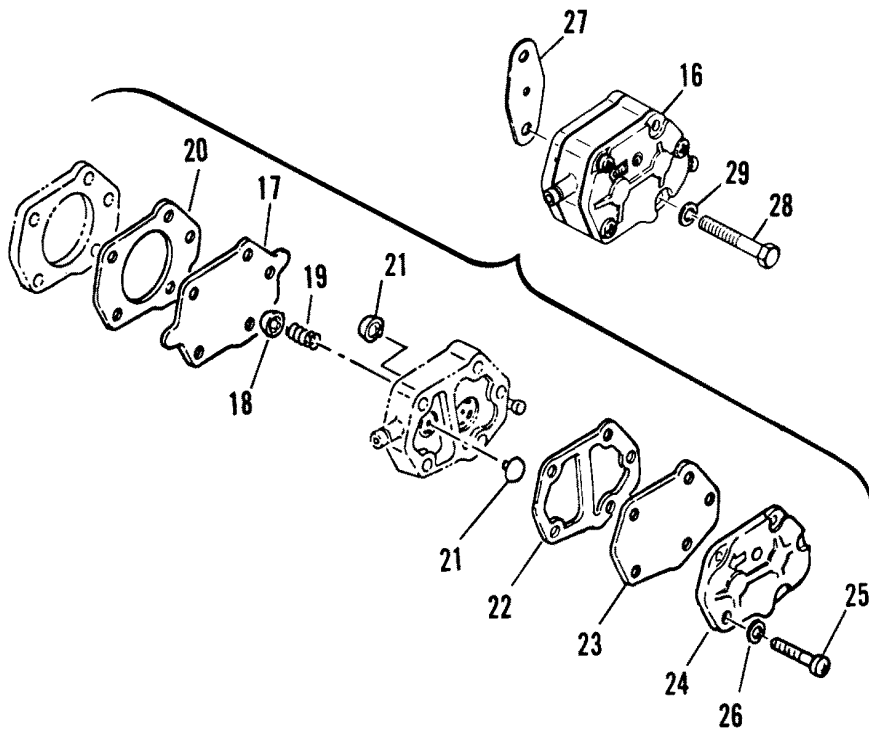
FUEL PUMP



FUEL PUMP

REF. NO.	PART NO.	SYM.	QTY.	DESCRIPTION
1	81328M		1	FUEL PUMP ASS'Y SERIAL 00000000-00151345
2	80606M		2	DIAPHRAGM SERIAL 00000000-00151345
3	80611M		2	PLATE, SPRING GUIDE SERIAL 00000000-00151345
4	24-80610M		1	SPRING SERIAL 00000000-00151345
5	27-80613M		2	GASKET, BODY TO BASE SERIAL 00000000-00151345
6	21-80608M		2	CHECK VALVE SERIAL 00000000-00151345
7	27-80612M		2	GASKET, CHECK VALVE SERIAL 00000000-00151345
8	80609M		2	RETAINER, CHECK VALVE SERIAL 00000000-00151345
9	10-82511M		2	SCREW SERIAL 00000000-00151345
10	11-82373M		2	NUT SERIAL 00000000-00151345
11	24-80615M		1	SPRING SERIAL 00000000-00151345
12	27-80614M		1	GASKET, BODY TO COVER SERIAL 00000000-00151345
13	80607M		1	COVER SERIAL 00000000-00151345
14	10-82522M		3	SCREW SERIAL 00000000-00151345
15	13-82208M		3	WASHER, LOCK SERIAL 00000000-00151345
27	27-80757M		1	GASKET, FUEL PUMP TO CRANKCASE
28	10-82428M		2	BOLT
29	12-82198M		2	WASHER

FUEL PUMP

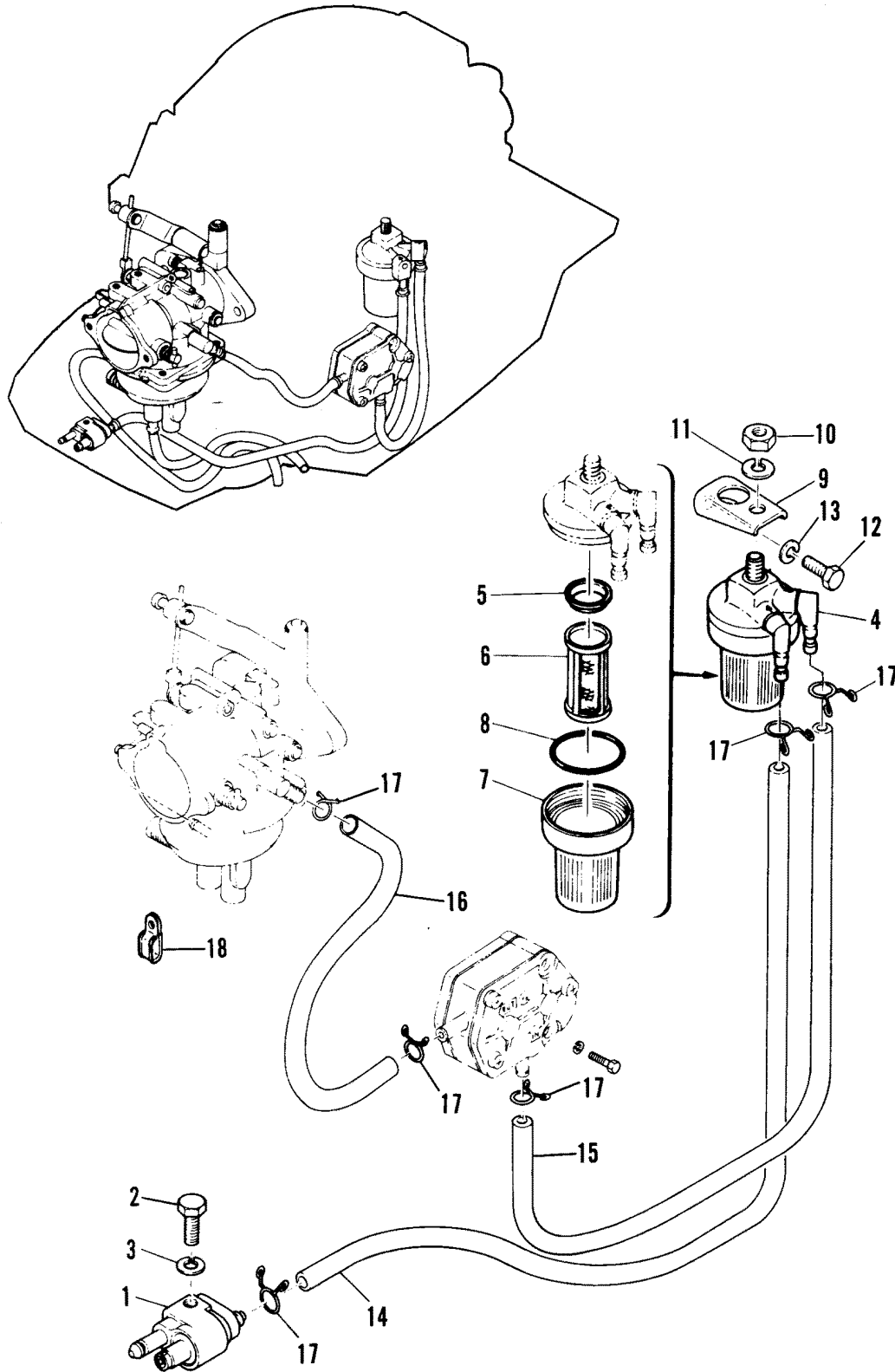


28 HP

FUEL PUMP

REF. NO.	PART NO.	SYM.	QTY.	DESCRIPTION
16	84139M		1	FUEL PUMP ASS'Y SERIAL 00151346-09999999
17	80606M		1	DIAPHGRAGM SERIAL 00151346-09999999
18	80611M		1	PLATE, SPRING GUIDE SERIAL 00151346-09999999
19	24-80610M		1	SPRING SERIAL 00151346-09999999
20	27-80613M		1	GASKET, BODY TO BASE SERIAL 00151346-09999999
21	21-84140M		2	CHECK VALVE SERIAL 00151346-09999999
22	27-80614M		1	GASKET, BODY TO COVER SERIAL 00151346-09999999
23	84141M		1	DIAPHGRAGM SERIAL 00151346-09999999
24	80607M		1	COVER SERIAL 00151346-09999999
25	10-82522M		3	SCREW SERIAL 00151346-09999999
26	13-82208M		3	WASHER, LOCK SERIAL 00151346-09999999
27	27-80757M		1	GASKET, FUEL PUMP TO CRANKCASE
28	10-82428M		2	BOLT
29	12-82198M		2	WASHER

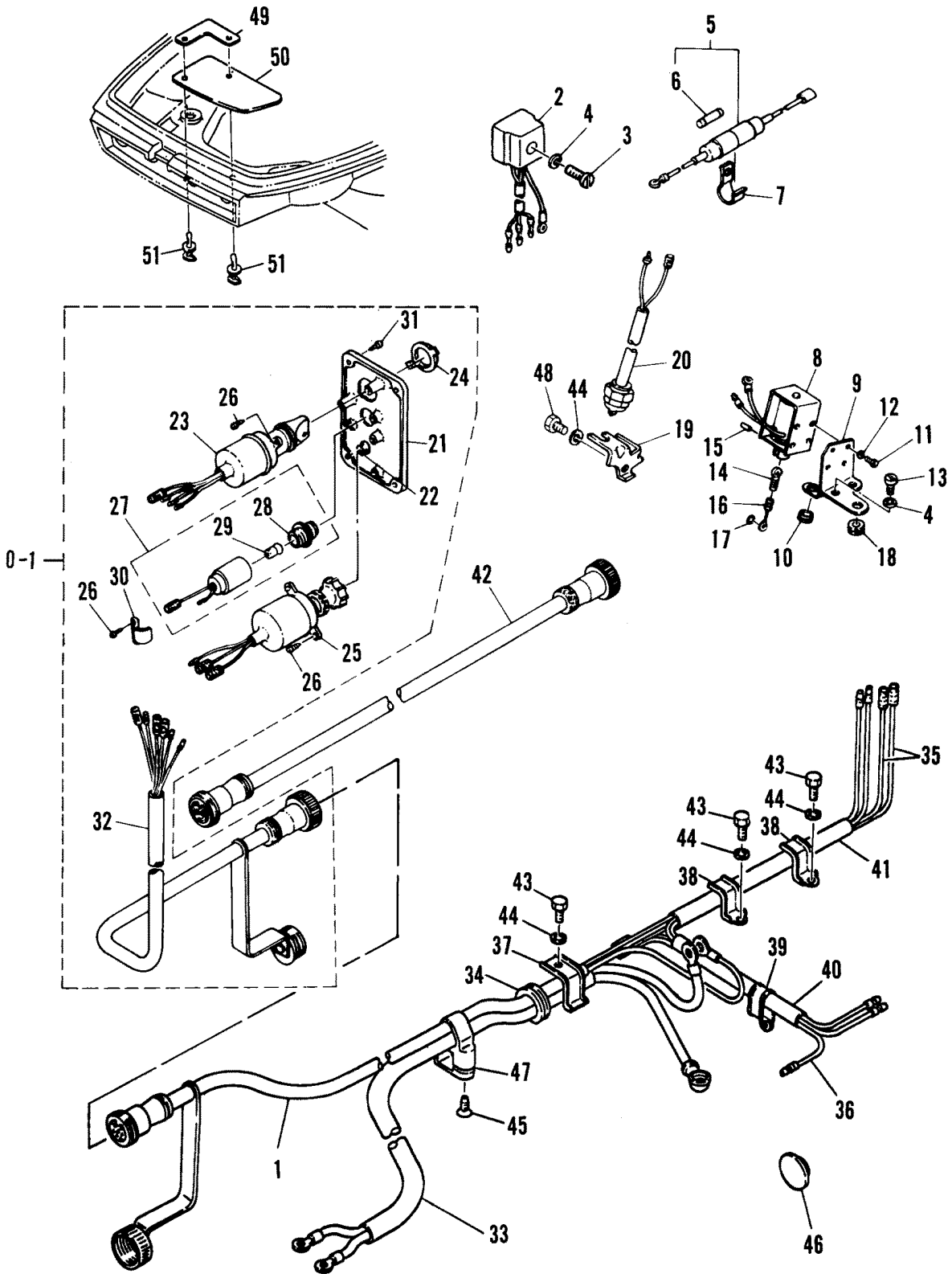
FUEL LINES AND FILTER



FUEL LINES AND FILTER

REF. NO.	PART NO.	SYM.	QTY.	DESCRIPTION
1	81041M		1	FUEL LINE CONNECTOR ASS'Y
2	10-83539M		1	BOLT SERIAL 00010711-09999999
	10-82423M		1	BOLT SERIAL 00000000-00010710
3	13-82212M		1	WASHER, LOCK
4	35-80617M		1	FILTER ASS'Y
5	27-82790M		1	PACKING
6	35-82783M		1	ELEMENT, FILTER
7	82784M		1	CUP, FILTER
8	25-82792M		1	O-RING
9	80620M		1	BRACKET, FUEL FILTER
10	11-82382M		1	NUT
11	13-82200M		1	WASHER, LOCK
12	10-82422M		1	BOLT
13	13-82197M		1	WASHER, LOCK
14	M-82012M		1	FUEL LINE, CONNECTOR TO FILTER
15	32-81566M		1	FUEL LINE, FUEL FIILTER TO FUEL PUMP
16	32-80605M		1	FUEL LINE, FUEL PUMP TO CARBURETOR
17	54-82047M		6	CLAMP
18	54-82034M		1	CLAMP

ELECTRIC START COMPONENTS

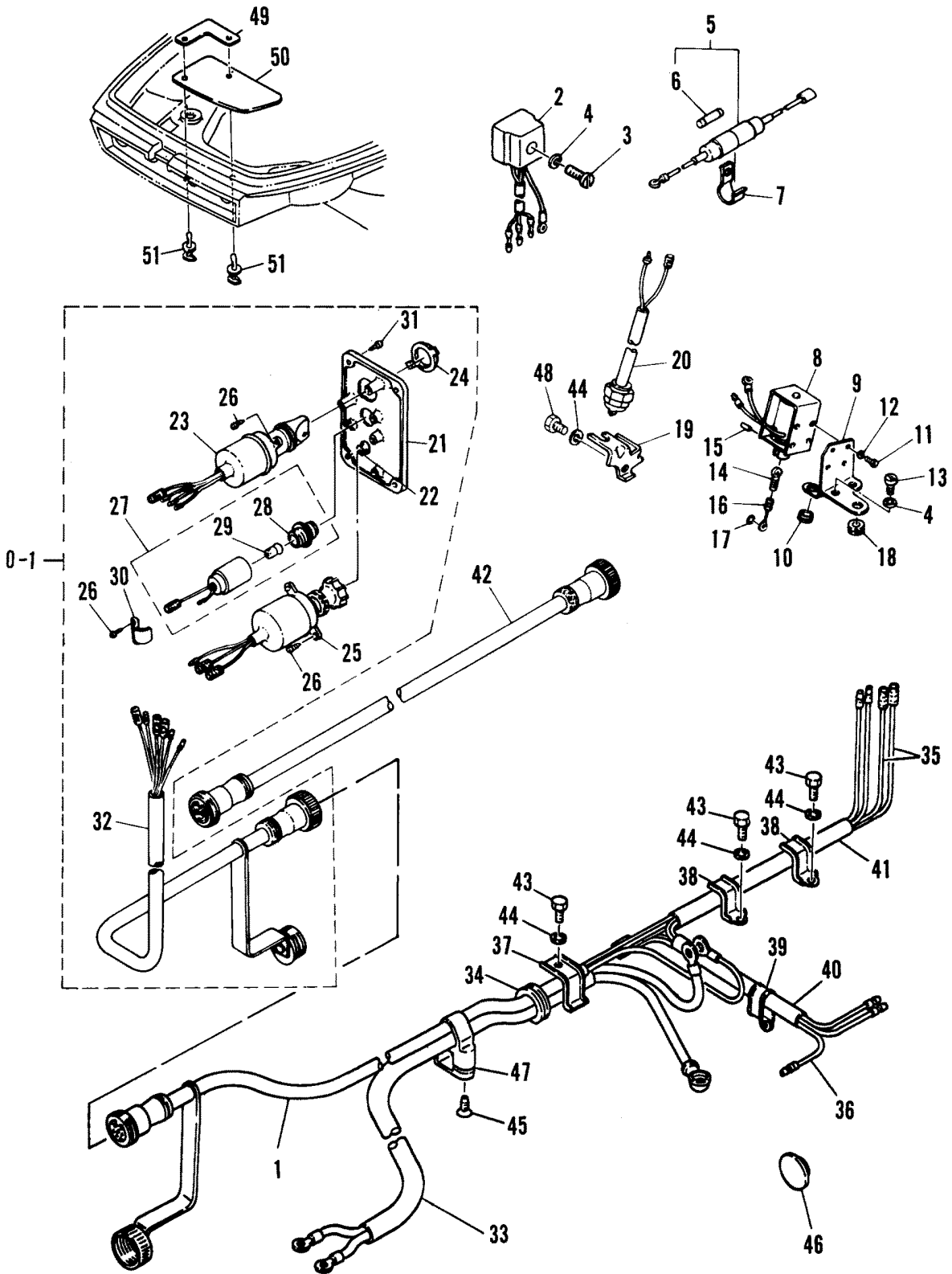


ELECTRIC START COMPONENTS

REF. NO.	PART NO.	SYM.	QTY.	DESCRIPTION
1	84-81664M		1	WIRE HARNESS ASS'Y, ENGINE
2	81652M		1	RECTIFIER
3	10-82492M		1	SCREW
4	13-82193M		3	WASHER, LOCK
5	88-81655M		1	FUSE HOLDER ASS'Y
6	88-81522M		1	FUSE
7	54-82036M		1	CLAMP, FUSE HOLDER
8	89-81665M		1	SOLENOID ASS'Y, CHOKE
9	81666M		1	BRACKET, SOLENOID
10	25-80726M		1	GROMMET, SOLENOID BRACKET
11	10-82510M		4	SCREW
13	10-82491M		2	SCREW
12	13-82191M		4	WASHER, LOCK
14	81553M		1	HOOK, SOLENOID PULL WIRE
15	17-82145M		1	PIN
16	24-81667M		1	WIRE, SOLENOID PULL
17	25-82258M		1	O-RING, PULL WIRE
18	25-82060M		1	GROMMET
19	81110M		1	BRACKET, NEUTRAL START SWITCH
20	87-81168M		1	NEUTRAL START SWITCH ASS'Y
0-1	83303M		1	SWITCH PANEL ASS'Y
21	81170M		1	PANEL, SWITCH
22	37-83058M		1	DECAL, WITCH PANEL
23	87-80716M		1	KEY SWITCH ASS'Y
24	80721M		1	CAP, SWITCH KEY
25	87-80715M		1	IGNITION SWITCH ASS'Y
26	10-80723M		6	SCREW
27	80725M		1	CHOKE LAMP ASS'Y
28	80724M		1	LENS, CHOKE LAMP
29	88-80007M		1	B, CHOKE LAMP (12V-3W)
30	54-80722M		1	CLAMP, WIRE HARNESS
31	10-80719M		4	SCREW
32	84-80720M		1	WIRE HARNESS ASS'Y, SWITCH PANEL
33	84-81654M		1	LEAD WIRE ASS'Y, CHOKE SOLENOID
34	25-81590M		1	GROMMET, LEAD WIRE
35	84-81660M		2	WIRE, LEAD
36	84-81661M		1	WIRE, LEAD
37	82044M		1	CLAMP
38	54-82035M		2	CLAMP
39	54-82034M		1	CLAMP
40	32-82032M		1	HOSE, WIRE HARNESS
41	32-82031M		1	HOSE, WIRE HARNESS
42	84-81171M		1	EXTENSION, WIRE HARN 2.9M (9.5 FT, OPT)

CONTINUED ON NEXT PAGE ➡

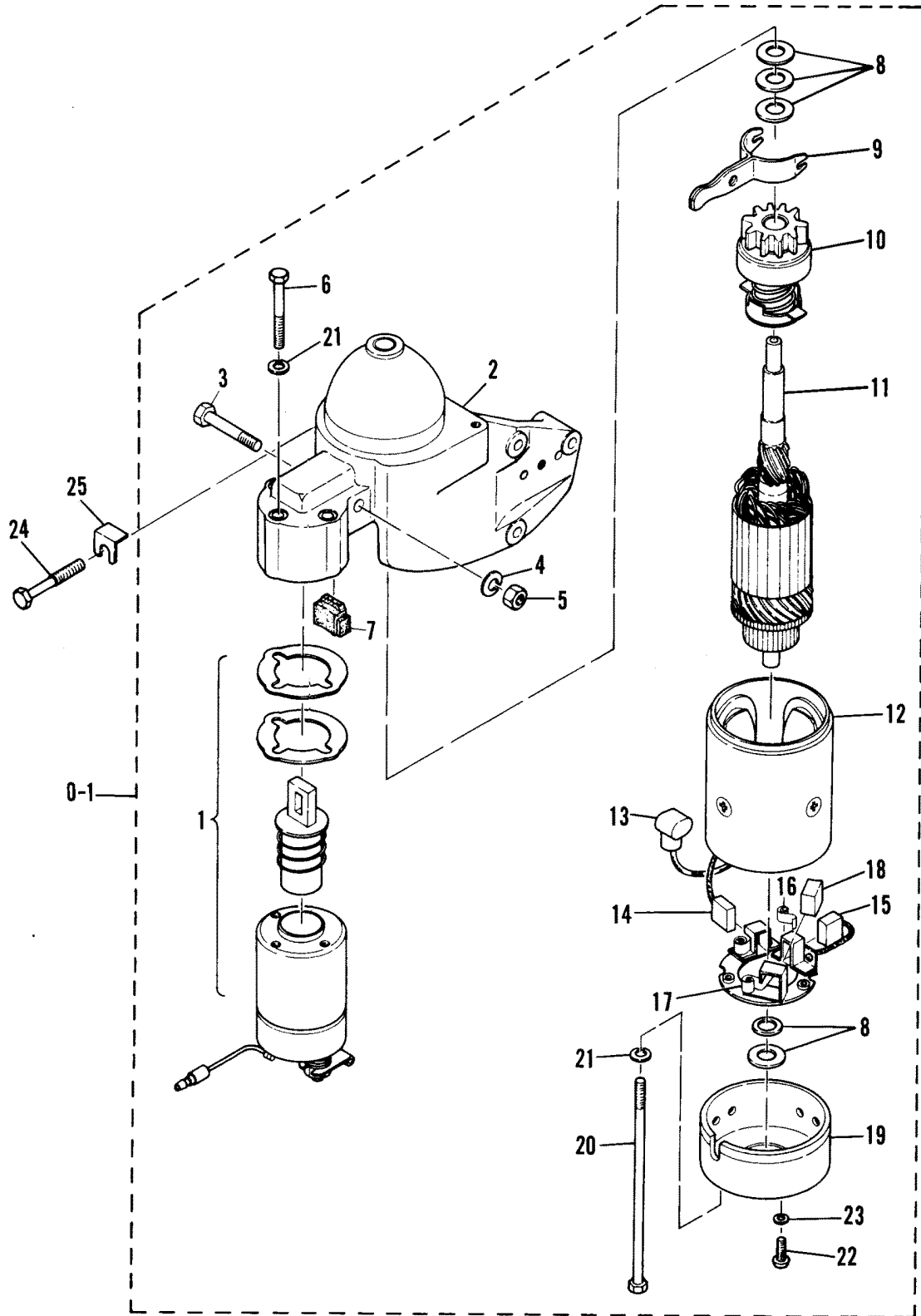
ELECTRIC START COMPONENTS



ELECTRIC START COMPONENTS

REF. NO.	PART NO.	SYM.	QTY.	DESCRIPTION
43	10-84211M		3	BOLT
44	13-82197M		3	WASHER, LOCK
45	10-81759M		1	TAP SCREW
46	82066M		1	GROMMET, BOTTOM COWL
47	82039M		1	CLAMP
48	10-83215M		1	BOLT
49	84467M		1	PLATE, FITTING () AND AB SERIAL 00154806-09999999
50	84468M		1	PLATE SERIAL 00154806-09999999
51	M-84469M		2	RIVET SERIAL 00154806-09999999

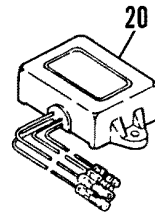
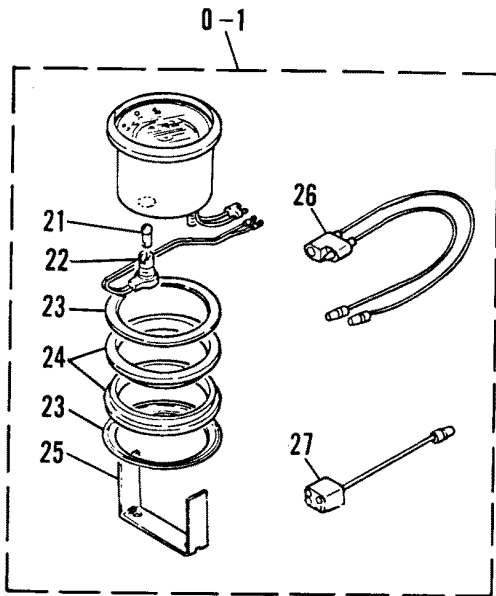
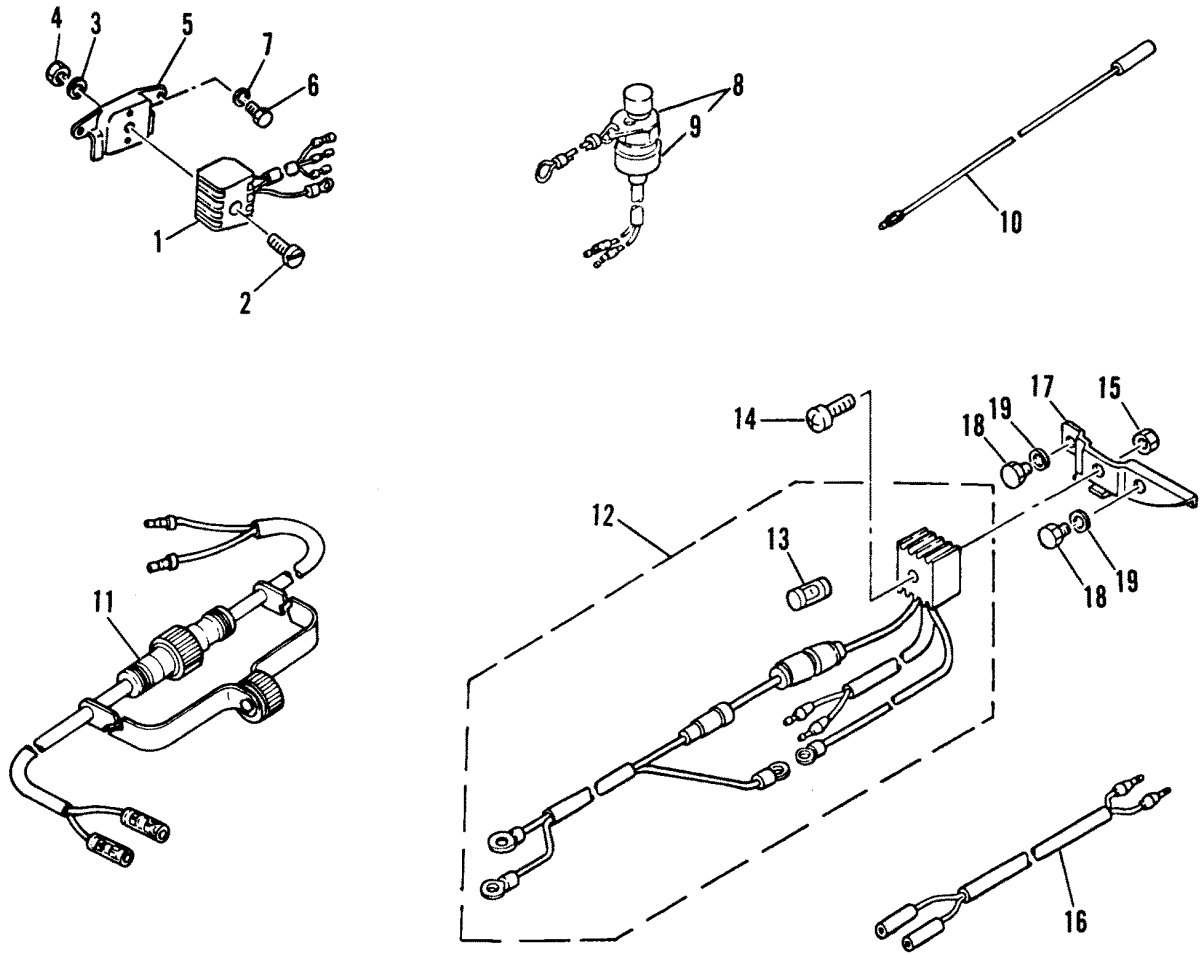
ELECTRIC STARTER MOTOR



ELECTRIC STARTER MOTOR

REF. NO.	PART NO.	SYM.	QTY.	DESCRIPTION
0-1	50-80691M		1	STARTER MOTOR ASS'Y
1	80709M		1	SOLENOID ASS'Y, STARTER MOTOR
2	80703M		1	COVER, DRIVE END
3	10-80701M		1	BOLT
4	13-82197M		1	WASHER, LOCK
5	M-82389M		1	NUT
6	10-80706M		3	BOLT
7	25-80702M		1	DAMPENER, SOLENOID
8	12-80692M		1	WASHER KIT
9	80705M		1	LEVER, SOLENOID
10	43-80704M		1	PINION, STARTER
11	80707M		1	ARMATURE ASS'Y
12	80693M		1	FRAME AND FIELD ASS'Y
13	80710M		1	CAP, FIELD LEAD
14	80694M		1	BRUSH, FIELD LEAD
15	80695M		1	BRUSH, BRUSH PLATE LEAD
16	24-80696M		2	SPRING, BRUSH
17	24-80697M		1	SPRING, BRUSH PLATE
18	12-80700M		1	:IECE, FRICTION
19	80698M		1	COVER, COMMUTATOR LEAD
20	10-80699M		2	THRU-BOLT
21	13-82193M		5	WASHER, LOCK
22	10-82515M		2	SCREW
23	13-82184M		2	WASHER, LOCK
24	10-82428M		1	BOLT
25	15-80712M		AR	SHIM

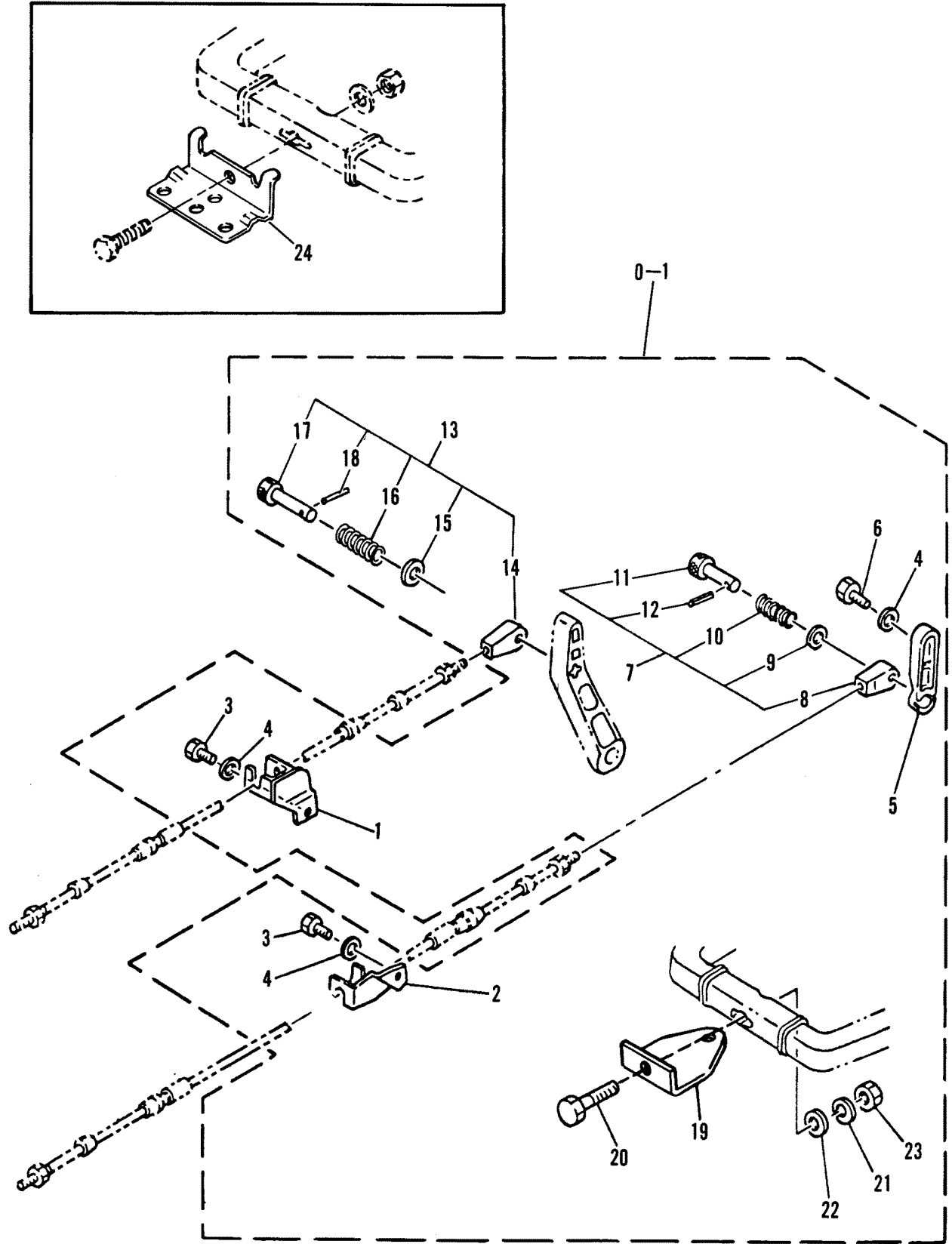
OPTIONAL PARTS



OPTIONAL PARTS

REF. NO.	PART NO.	SYM.	QTY.	DESCRIPTION
1	81652M		1	RECTIFIER () AND BELOW SERIAL 00000000-00154805
2	M-82496M		1	SCREW () AND BELOW SERIAL 00000000-00154805
3	13-82193M		1	WASHER () AND BELOW SERIAL 00000000-00154805
4	11-82388M		1	NUT () AND BELOW SERIAL 00000000-00154805
5	81653M		1	PLATE, RECTIFIER FITTING (SERIAL 00000000-00154805
6	10-84303M		2	BOLT () AND BELOW SERIAL 00000000-00154805
7	13-82212M		1	WASHER, LOCK 1
8	87-81663M		1	STOP SWITCH ASS'Y
9	81531M		1	STOPPER
10	84-81660M		2	WIRE, LEAD 46CM (18 INCH)
11	84-80052M		1	EXTENSION, STOP SWITCH HARNESS
12	84329M		1	RECTIFIER ASS'Y SERIAL 00045321-09999999
13	88-81522M		1	FUSE SERIAL 00154806-09999999
14	10-82492M		1	SCREW SERIAL 00154806-09999999
15	11-82378M		1	NUT SERIAL 00154806-09999999
16	84-84470M		1	EXTENSION, WIRE LEAD 0.9M (3 FT) SERIAL 00154806-09999999
17	84471M		1	PLATE, RECTIFIER FITTING SERIAL 00154806-09999999
18	10-84315M		2	BOLT SERIAL 00154806-09999999
19	13-82199M		2	WASHER, LOCK SERIAL 00154806-09999999
20	84125M		1	VOLTAGE REGULATOR ASS'Y
0-1	79-84311M		1	TACHOMOTER KIT
21	88-80007M		1	BULB
22	84348M		1	SOCKET, BULB
23	84349M		2	DAMPER
24	12-84350M		2	WASHER
25	84351M		1	PLATE
26	84-84352M		1	EXTENSION, LEAD
27	84-84353M		2	CONNECTOR

REMOTE CONTROL ATTACHING KIT



REMOTE CONTROL ATTACHING KIT

REF. NO.	PART NO.	SYM.	QTY.	DESCRIPTION
0-1	82830M		1	ATTACHING KIT
1	84221M		1	BRACKET, GEAR SHIFT
2	83717M		1	BRACKET, THROTTLE
3	10-83395M		2	BOLT
4	12-82214M		3	WASHER
5	84222M		1	THROTTLE LEVER
6	10-82448M		1	BOLT
7	83723M		1	CABLE END ASS"Y, THROTTLE
8	83724M		1	CABLE END
9	12-82216M		1	WASHER
10	24-83725M		1	SPRING
11	17-83726M		1	HOOK
12	17-82146M		1	PIN, ROLL
13	83719M		1	CABLE END ASS"Y GEAR
14	83720M		1	CABLE END
15	12-82216M		1	WASHER
16	24-83721M		1	SPRING
17	17-83722M		1	HOOK
18	17-82146M		1	PIN, ROLL
19	84220M		1	BRACKET, STEERING
20	10-82474M		1	BOLT
21	13-82218M		1	WASHER
22	12-82220M		1	WASHER, LOCK
23	11-82395M		1	NUT
24	82776		1	BRACKET, STEERING (ROPE/PULLEY-OPT)

PARTS INDEX

Part Number	Description	Pg.	Ref. No.	Part Number	Description	Pg.	Ref. No.
20427	FLOAT, FUEL GAUGE	43	16	80632M	SHAFT, STEERING PIVOT . .	17	9
20430	RETAINER, FUEL GAUGE . .	43	14	80633M	P:LATE, FRICTION	17	5
28860	FRAME, RETAINING-FUEL TANK COVER	43	20	80634M	SEAL, TOP COWL	37	16
28897A1	INDICATOR AND FLOAT ASSEMBLY	43	15	80639M	MOUNT, RUBBER CLAMP BRACKET	17	27
28897A2	FUEL GAUGE ASSEMBLY, COMPLETE	43	13	80641M	KNOB, TILT STOP SHAFT . .	17	24
30185A1	BAYONET BODY ASS'Y	41	16	80642M	HOOK, REVERSE LOCK- REAR	19	8
30187	STEM, BAYONET BODY . . .	41	17	80643M	HOO, REVERSE LOCK- FRONT	19	9
30188	WASHER, CAP	41	20	80644M	LINK, REVERSE LOCK LEVER	19	4
47341A1	EMERGENCY STARTER ROPE	35	44	80645M	ROD, REVERSE LOCK LEVER	19	7
54920A1	LENS ASSEMBLY, FUEL GAUGE	43	11	80646M	LEVER, LOCK/RELEASE . . .	19	1
64841A1	CONNECTOR/GAUGE ASS'Y, FUEL GAUGE	43	0-2	80647M	COVER, LEVER	19	2
64841A3	COVER, FUEL TANK	43	9	80648M	CAM ,TILT	19	5
79629A1	STARTER ROPE	33	17	80652M	CONNECTOR, SHIFT	25	22
80025M	LUBRICATOR	29	13	80654M	BRACKET, MOUNTING	21	1
80048M	HANDLE, TRANSOM CLAMP SCREW	17	19	80656M	MOUNT, RUBBER-UPPER . .	21	13
80063M	HANDLE, STARTER	33	16	80657M	BRACKET, CABLE ANCHOR	21	10
80268M	BRACKET, INDICATOR	41	6	80661M	MOUNT, RUBBER-LOWER FRONT	21	32
80268M	SUPPORT, INDICATOR	39	11	80679M	SLIDE, SHIFT	13	25
80269M	LENS, INDICATOR	39	10	80680M	PLUNGER, SHIFT	15	48
80269M	LENS, INDICATOR	41	5	80683M	FLYWHEEL MAG ASS'Y (ELECTRIC START MODEL)	29	0-1
80509M	GRIP, THROTTLE HANDLE .	23	14	80684M	BASE, MAGNETO	29	6
80551M	PRIMARY IGNITION COIL, #1 CYL	29	7	80687M	FLYWHEEL ASS'Y (ELECTRIC START MODEL)	29	1
80552M	PRIMARY IGNITION COIL, #2 CYL	29	8	80689M	COVER, FLYWHEEL	29	18
80553M	LIGHTING COIL (SEE NOTE)	29	16	80693M	FRAME AND FIELD ASS'Y . .	55	12
80558M	CONDENSER	29	12	80694M	BRUSH, FIELD LEAD	55	14
80568M	REED VALVE	7	15	80695M	BRUSH, BRUSH PLATE LEAD	55	15
80570M	MANIFOLD, INTAKE	7	5	80698M	COVER, COMMUTATOR LEAD	55	19
80576M	NOZZLE, MAIN	9	3	80703M	COVER, DRIVE END	55	2
80582M	JET, MAIN (#140)	9	4	80705M	LEVER, SOLENOID	55	9
80591M	FLOAT	9	5	80707M	ARMATURE ASS'Y	55	11
80593M	INLET VALVE & SEAT	9	2	80709M	SOLENOID ASS'Y, STARTER MOTOR	55	1
80598M	SHAFT, RSHEAVE	33	9	80710M	CAP, FIELD LEAD	55	13
80599M	PAWL, STARTER	33	6	80721M	CAP, SWITCH KEY	51	24
80600M	GUIDE, STARTER ROPE . . .	33	13	80724M	LENS, CHOKE LAMP	51	28
80601M	SEAL, RUBBER-STARTER . .	37	15	80725M	CHOKE LAMP ASS'Y	51	27
80602M	BRACKET, STARTER HSG (STARBOARD)	33	22	80930M	BREAKER ASS'Y	29	11
80603M	BRACKET STARTER HSG (PORT MANUAL)	33	23	80935M	PLUG CAP ASS'Y (NOISE SUPPRESSOR)(OPT)	31	33
80606M	DIAPHGRAGM	47	17	81030M	COVER, THERMOSTAT	3	23
80606M	DIAPHRAGM	45	2	81041M	FUEL LINE CONNECTOR ASS'Y	49	1
80607M	COVER	45	13	81098M	THERMOSTAT	3	22
80607M	COVER	47	24	81106M	PLUNGER, STARTER LOCKOUT	33	30
80609M	RETAINER, CHECK VALVE .	45	8	81107M	LINK, STARTER LOCKOUT .	33	35
80611M	PLATE, SPRING GUIDE	45	3	81108M	CABLE, STARTER LOCKOUT	33	32
80611M	PLATE, SPRING GUIDE	47	18				
80620M	BRACKET, FUEL FILTER . . .	49	9				
80622M	LEVER, THROTTLE	9	17				
80628M	STOP, MAGNETO BASE . . .	27	10				
80629M	SWIVEL, LINK ROD	27	22				
80631M	CAM, THROTTLE	23	22				

PARTS INDEX

Part Number	Description	Pg.	Ref. No.	Part Number	Description	Pg.	Ref. No.
81110M	BRACKET, NEUTRAL START SWITCH	51	19	81616M	COVER, WATER INLET-STARBOARD	15	52
81129M	RETAINER, STEERING ARM	23	10	81617M	HOUSING, BEARING	15	34
81134M	SHAFT, THROTTLE	27	28	81652M	RECTIFIER	51	2
81138M	BRACKET, STEERING	23	1	81652M	RECTIFIER () AND BELOW	57	1
81145M	CLAMP, COWL	37	22	81653M	PLATE, RECTIFIER FITTING ()	57	5
81151M	HANDLE, GEAR SHIFT	25	1	81656M	SECONDARY IGNITION COIL ASS'Y #1 CYL	31	27
81152M	CAM, SHIFT	25	2	81657M	BRACKET, SECONDARY COIL	29	24
81170M	PANEL, SWITCH	51	21	81666M	BRACKET, SOLENOID	51	9
81191M	SWIVEL, LINK ROD	7	24	81694M	FUEL TANK CAP ASS'Y	39	4
81191M	SWIVEL, THROTTLE	9	22	82038M	CLAMP, HIGH TENSION LEADS	31	32
81225M	SWIVEL	27	20	82039M	CLAMP	53	47
81318M	INDICATOR	39	2	82044M	CLAMP	51	37
81318M	INDICATOR, FUEL LEVEL	41	9	82063M	GROMMET, CHOKE KNOB	7	21
81319M	FLOAT, INDICATOR	39	3	82066M	GROMMET, BOTTOM COWL	53	46
81319M	FLOAT, INDICATOR	41	10	82254M	RETAINER, OIL SEAL	5	12
81321M	HOUSING, FUEL CONNECTOR	39	5	82346M	BALL, SHIFT DETENT	25	8
81325M	BULB, PRIMER	39	16	82557M	MOUNT, RUBBER-LOWER SIDE	21	22
81325M	BULB, PRIMER	41	23	82776	BRACKET, STEERING (ROPE/PULLEY-OPT)	59	24
81328M	FUEL PUMP ASS'Y	45	1	82784M	CUP, FILTER	49	7
81439M	CAP, GREASE FITTING	21	7	82788M	PLUG CAP ASS'Y	31	33
81439M	CAP, GRTEASE FITTING	17	4	82795M	TRIM TAB (ANODE)	15	55
81531M	STOPPER	57	9	82830M	ATTACHING KIT	59	0-1
81553M	HOOK, SOLENOID PULL WIRE	51	14	82857M	STOPPER, PLATE	19	14
81556M	ANODE	3	10	82895M	PIECE, FRICTION	23	27
81559M	JET, LOW SPEED (#60)	9	1	82898M	APPLIQUE, FRONT	37	3
81562M	COVER, AIR INITAKE	7	1	82913M	APPLIQUE, REAR	37	4
81563M	BRACKET, THROTTLE CABLE	27	18	82914M	BOOT, SHIFT ROD	13	6
81564M	HOUSING, OIL SEAL	3	13	82916M	PLATE	13	7
81567M	CABLE, THROTTLE	23	24	83052M	SHIFT CAM ASS'Y (LONG SHAFT)	13	5
81568M	COVER, EXHAUST-INNER	3	28	83069M	SHIFT CAM ASS'Y (SHOFT SHAFT)	13	5
81569M	COVER, EXHAUST-OUTER	3	27	83113M	SHAFT, THROTTLE	9	23
81571M	MANIFOLD, EXHAUST	11	7	83137M	HOOK	37	9
81575M	CAM, THROTTLE ADVANCE	27	4	83160M	LINK ROD, THROTTLE LEVER	9	21
81576M	LEVER, CHOKE	7	22	83199M	RETAINER, MAGNETO BASE	3	15
81577M	LINK ROD, CHOKE LEVER	7	25	83200M	FLOAT BOWL	9	7
81578M	KNOB, CHOKE	7	20	83201M	LEVER THROTTLE	9	25
81581M	CAM , MAGNETO CONTROL	27	14	83203M	CHOKE LEVER	9	28
81582M	LINK ROD, MAGNETO CONTROL	27	21	83206M	EXTENSION, LONG SHAFT	11	13
81583M	ARM, STEERING	23	5	83208M	LEVER, SHIFT ROD	25	26
81584M	SHAFT, THROTTLE	23	18	83209M	ELVER, THROTTLE SHAFT	27	27
81585M	HANDLE, THROTTLE	23	13	83210M	RETAINER, MAGNETO BASE-OUTER	27	1
81586M	INDICATOR, THROTTLE	23	15	83212M	HOLDER, CLAMP BAND	37	7
81591M	LEVER, COWL CLAMP	37	19	83303M	SWITCH PANEL ASS'Y	51	0-1
81594M	SWIVEL, SHIFT ROD	25	18	83305M	STOP, MAGNETO BASE	27	7
81595M	LINK ROD, SHIFT	25	12	83306M	MANIFOLD, EXHAUST	11	7
81596M	SHAFT, SHIFT-UPPER	25	21	83308M	BASE , WATER PUMP (CHROME OPTIONAL)	15	42
81601M	BASE, WATER PUMP (STD)	15	42				
81608M	MOUNT, RUBBER-UPPER FRONT	21	16				
81609M	HOUSING, LOWER MOUNT-STARBOARD	21	26				
81610M	HOUSING, LOWER MOUNT-PORT	21	27				
81611M	MOUNT, RUBBER-HOUSING	21	36				

PARTS INDEX

Part Number	Description	Pg.	Ref. No.	Part Number	Description	Pg.	Ref. No.
83313M	PRIMARY IGNITION COIL, #1 CYL	29	7	10-80023M	SCREW W/WASHER	29	14
83314M	PRIMARY IGNITION COIL, #2 CYL	29	8	10-80556M	SCREW W/WASHER	29	10
83315M	LIGHTING COIL (SEE NOTE)	29	16	10-80573M	SCREW, IDLE MIXTURE	9	12
83319M	SOUND BLANKET	37	11	10-80699M	THRU-BOLT	55	20
83320M	SOUND BLANKET	37	12	10-80701M	BOLT	55	3
83321M	SOUND BLANKET	37	13	10-80706M	BOLT	55	6
83322M	SOUND BLANKET	37	14	10-80719M	SCREW	51	31
83618M	FUEL METER	41	4	10-80723M	SCREW	51	26
83717M	BRACKET, THROTTLE	59	2	10-81146M	BOLT	17	26
83719M	CABLE END ASS'Y GEAR	59	13	10-81558M	SET SCREW, THROTTLE LEVER	9	20
83720M	CABLE END	59	14	10-81711M	BOLT	15	49
83723M	CABLE END ASS'Y, THROTTLE	59	7	10-81746M	BOLT	33	33
83724M	CABLE END	59	8	10-81747M	ADJUSTER, CABLE	23	25
83776M	SECONDARY IGNITION COIL ASS'Y #2 CYL	31	28	10-81754M	SCREW	17	6
83787M	POWERHEAD ASS'Y COMPLETE (SEE NOTE)	3	35	10-81756M	SCREW, TRANSOM CLAMP	17	20
83814M	EXTENSION KIT, LONG SHAFT	11	17	10-81759M	TAP SCREW	53	45
84125M	VOLTAGE REGULATOR ASS'Y	57	20	10-82167M	SCREW	3	8
84139M	FUEL PUMP ASS'Y	47	16	10-82172M	SCREW	11	12
84141M	DIAPHGRAGM	47	23	10-82177M	SCREW	3	17
84185M	REPAIR KIT, WATER PUMP	15	65	10-82404M	BOLT (ELECTRIC START MODEL)	29	3
84220M	BRACKET, STEERING	59	19	10-82405M	BOLT	7	10
84221M	BRACKET, GEAR SHIFT	59	1	10-82405M	BOLT	31	30
84222M	THROTTLE LEVER	59	5	10-82405M	BOLT	33	24
84329M	RECTIFIER ASS'Y	57	12	10-82406M	BOLT	3	5
84348M	SOCKET, BULB	57	22	10-82407M	BOLT	3	21
84349M	DAMPER	57	23	10-82408M	BOLT	3	6
84351M	PLATE	57	25	10-82421M	BOLT, COVER ATTACHING	29	20
84455M	CHOKE LEVER	9	28	10-82422M	BOLT	31	25
84456M	REPAIR KIT, CARBURETOR	9	30	10-82422M	BOLT	33	14
84457M	LEVER, THROTTLE	23	30	10-82422M	BOLT	49	12
84458M	CAM, SHAFT	25	2	10-82423M	BOLT	49	2
84459M	RETAINER, SHIFT DETENT	25	6	10-82424M	BOLT	33	27
84460M	PLUNGER, SHIFT CAM	25	9	10-82428M	BOLT	33	25
84463M	LEVER, SHIFT ROD	25	26	10-82428M	BOLT	45	28
84465M	BRACKET, STARTER HOUSING (STARBOARD)	33	22	10-82428M	BOLT	47	28
84466M	BRACKET, STARTER HSG (PORT MANUAL)	33	23	10-82428M	BOLT	55	24
84467M	PLATE, FITTING () AND AB	53	49	10-82437M	BOLT	33	27
84468M	PLATE	53	50	10-82448M	BOLT	59	6
84471M	PLATE, RECTIFIER FITTING	57	17	10-82451M	BOLT	21	12
M-6853	BOTTOM COWL	37	18	10-82452M	BOLT	23	29
M-82012M	FUEL LINE, CONNECTOR TO FILTER	49	14	10-82452M	BOLT	23	3
M-82125M	PIN	19	11	10-82453M	BOLT	21	8
M-82389M	NUT	55	5	10-82453M	BOLT	25	4
M-82496M	SCREW () AND BELOW	57	2	10-82454M	BOLT	15	44
M-84469M	RIVET	53	51	10-82462M	BOLT	21	34
10-20411	SCREW, FUEL TANK COVER TO FUEL TANK	43	22	10-82463M	BOLT	21	35
10-25575	SCREW, VENT-FILLER CAP	43	4	10-82465M	BOLT	11	4
10-62568	SCREW, RETAINER TO FUEL TANK COVER	43	18	10-82470M	BOLT	21	28
				10-82473M	BOLT	21	29
				10-82474M	BOLT	59	20
				10-82477M	BOLT, TRIM TAB ATTACHING	15	56
				10-82483M	SCREW	15	53
				10-82483M	SCREW	23	17
				10-82490M	SCREW, BASE ATTACHING	27	2
				10-82491M	SCREW	51	13
				10-82492M	SCREW	51	3
				10-82492M	SCREW	57	14

PARTS INDEX

Part Number	Description	Pg.	Ref. No.	Part Number	Description	Pg.	Ref. No.
10-82503M	SCREW W/WASHER	29	17	11-82380M	NUT	7	13
10-82510M	SCREW	51	11	11-82380M	NUT	7	18
10-82511M	SCREW	45	9	11-82380M	NUT	27	12
10-82515M	SCREW	9	9	11-82380M	NUT	33	28
10-82515M	SCREW	55	22	11-82380M	NUT	33	34
10-82518M	SCREW	41	8	11-82382M	NUT	33	12
10-82518M	SCREW, SUPPORT ATTACHING	39	12	11-82382M	NUT	33	19
10-82522M	SCREW	45	14	11-82382M	NUT	49	10
10-82522M	SCREW	47	25	11-82383M	NUT	21	37
10-82526M	SCREW, HOUSING ATTACHING	39	7	11-82388M	NUT () AND BELOW	57	4
10-82526M	SCREW, HOUSING ATTACHING	41	14	11-82392M	NUT	17	33
10-82623M	SCREW, IDLE SPEED	9	11	11-82392M	NUT	21	30
10-82924M	BOLT, CLAMP BRACKET	17	31	11-82393M	NUT	21	14
10-82938M	BOLT	13	8	11-82395M	NUT	17	30
10-83207M	BOLT	11	14	11-82395M	NUT	59	23
10-83215M	BOLT	53	48	11-82927M	NUT, APPLIQUE ATTACHING	37	6
10-83285M	BOLT	23	12	11-83056M	NUT	23	28
10-83285M	BOLT (ELECTRIC)	7	11	12-49221	WASHER, VENT SCREW	43	5
10-83285M	BOLT (MANUAL)	7	11	12-74711	WASHER, FUEL TANK COVER FASTENING SCREW	43	23
10-83395M	BOLT	21	18	12-80271M	WASHER, HOUSING SCREW	39	8
10-83395M	BOLT	59	3	12-80271M	WASHER, HOUSING SCREW	41	15
10-83539M	BOLT	3	26	12-80564M	WASHER	3	7
10-83539M	BOLT	23	11	12-80638M	PAD, TRANSOM CLAMP SCREW	17	21
10-83539M	BOLT	27	11	12-80692M	WASHER KIT	55	8
10-83539M	BOLT	35	42	12-80700M	WASHER, FRICTION	55	18
10-83539M	BOLT	49	2	12-80884M	WASHER, APPLIQUE NUT	37	5
10-84211M	BOLT	27	19	12-81624M	THRUST WASHER, DRIVESHAFT	13	17
10-84211M	BOLT	53	43	12-81632M	THRUST WASHER, REVERSE GEAR	15	31
10-84237M	BOLT	27	17	12-81650M	THRUST WASHER, FORWARD	15	57
10-84239M	BOLT	3	30	12-81789M	WASHER	27	23
10-84245M	SCREW	7	3	12-81790M	WASHER	7	27
10-84303M	BOLT	3	35	12-81794M	WASHER	37	23
10-84303M	BOLT () AND BELOW	57	6	12-81801M	WASHER	33	11
10-84303M	BOLT, (MANUAL)	35	41	12-81806M	WASHER	17	28
10-84303M	BOLT, STOP ATTACHING	27	8	12-81814M	WASHER, FLYWHEEL NUT	29	23
10-84313M	BOLT	27	5	12-81829M	WASHER, CONNECTING ROD BEARING	5	6
10-84315M	BOLT	37	25	12-81832M	THRUST WASHER, REVERSE GEAR	13	28
10-84315M	BOLT	57	18	12-81835M	WASHER	3	25
10-84342M	BOLT	33	10	12-81843M	WASHER	25	13
10-84487M	BOLT	3	31	12-81843M	WASHER	25	28
10-84488M	BOLT	3	32	12-81846M	WASHER	25	17
11-28587	NUT, SPEED-SPRING RETAINER	43	7	12-81851M	WASHER	25	3
11-81619M	NUT	15	39	12-81873M	COLLAR, THRUST & PIVOT SHAFT	17	11
11-81765M	NUT	23	26	12-81969M	WASHER	27	16
11-81767M	NUT	25	24	12-82195M	WASHER	7	4
11-81770M	NUT, FLYWHEEL ATTACHING	29	22	12-82196M	WASHER	27	6
11-81774M	NUT, PROPELLER	15	60	12-82196M	WASHER	35	36
11-81780M	NUT, DRIVESHAFT	13	19	12-82198M	WASHER	7	14
11-81781M	NUT	15	54	12-82198M	WASHER	27	9
11-82182M	NUT	21	21	12-82198M	WASHER	45	29
11-82183M	NUT	21	27	12-82198M	WASHER	47	29
11-82373M	NUT	45	10				
11-82378M	NUT	27	25				
11-82378M	NUT	57	15				
11-82379M	NUT	9	18				

PARTS INDEX

Part Number	Description	Pg.	Ref. No.	Part Number	Description	Pg.	Ref. No.
12-82198M	WASHER (ELECTRIC START MODEL)	29	5	13-82212M	WASHER, LOCK 1	57	7
12-82198M	WASHER, COVER BOLT ...	29	21	13-82215M	WASHER, LOCK	11	5
12-82198M	WASHER, PLAIN	13	9	13-82215M	WASHER, LOCK	17	7
12-82201M	WASHER	33	20	13-82215M	WASHER, LOCK	21	31
12-82204M	WASHER, THROTTLE SHAFT	23	19	13-82218M	WASHER	59	21
12-82209M	WASHER	9	15	13-82218M	WASHER, LOCK	11	15
12-82209M	WASHER	25	25	14-81876M	WASHER	15	38
12-82211M	WASHER	25	14	15-80712M	SHIM	55	25
12-82214M	WASHER	13	4	15-81626M	SHIM, FORWARD GEAR ADJUST (.05 MM)	13	20
12-82214M	WASHER	59	4	15-81627M	SHIM, FORWARD GEAR ADJUST (.08 MM)	13	20
12-82214M	WASHER, LOCK	15	45	15-81628M	SHIM, FORWARD GEAR ADJUST (.12 MM)	13	20
12-82216M	WASHER	59	15	15-81629M	SHIM, FORWARD GEAR ADJUST (.30 MM)	13	20
12-82216M	WASHER	59	9	15-81630M	SHIM, FORWARD GEAR ADJUST (.50 MM)	13	20
12-82217M	WASHER	11	6	15-81633M	SHIM, REVERSE GEAR ADJUST (.05MM)	13	30
12-82217M	WASHER	21	15	15-81634M	SHIM, REVERSE GEAR ADJUST (.08MM)	13	30
12-82219M	WASHER	21	20	15-81635M	SHIM, REVERSE GEAR ADJUST (.12 MM)	15	30
12-82220M	WASHER	11	16	15-81636M	SHIM, REVERSE GEAR ADJUST (.30 MM)	15	30
12-82220M	WASHER, LOCK	59	22	15-81637M	SHIM, REVERSE GEAR ADJUST (.50 MM)	15	30
12-83204M	M-12-83204M	9	29	15-81638M	SHIM, DRIVESHAFT BEARING (.05 MM)	13	14
12-84350M	WASHER	57	24	15-81639M	SHIM, DRIVESHAFT BEARING (.08MM)	13	14
13-81862M	WASHER, LOCK	15	50	15-81640M	SHIM, DRIVESHAFT BEARING (.12 MM)	13	14
13-81865M	WASHER, WAVE	7	29	15-81641M	SHIM, DRIVESHAFT BEARING (.30 MM)	13	14
13-81865M	WASHER, WAVE	35	37	15-81642M	SHIM, DRIVESHAFT BEARING (.50 MM)	13	14
13-81867M	WASHER, WAVE	35	40	16-81722M	STUD, CAM TO SHAFT	27	26
13-81869M	WASHER, WAVE	37	30	16-81728M	STUD, CARBURETOR ATTACHING	7	7
13-82184M	WASHER, LOCK	55	23	16-81733M	STUD, MANIFOLD ATTACHING	7	6
13-82191M	WASHER, LOCK	51	12	16-83317M	BOLT	33	18
13-82193M	WASHER () AND BELOW ..	57	3	17-20426	RIVET, INDICATOR TO RETAINER	43	17
13-82193M	WASHER, LOCK	27	24	17-80592M	PIN, FLOAT	9	6
13-82193M	WASHER, LOCK	27	3	17-81150M	SHAFT, TILT STOP	17	23
13-82193M	WASHER, LOCK	51	4	17-81880M	PIN, CLEVIS	7	26
13-82193M	WASHER, LOCK	55	21	17-81882M	PIN	19	10
13-82197M	WASHER	27	13	17-81887M	PIN	17	13
13-82197M	WASHER, LOCK	3	18	17-81888M	PIN, ROLL	17	22
13-82197M	WASHER, LOCK	7	12	17-81895M	PIN	19	6
13-82197M	WASHER, LOCK	31	26	17-81899M	CROSS PIN, CLUTCH	13	24
13-82197M	WASHER, LOCK	33	15	17-81907M	RIVER	23	16
13-82197M	WASHER, LOCK	49	13	17-82144M	PIN	19	15
13-82197M	WASHER, LOCK	53	44	17-82145M	PIN	51	15
13-82197M	WASHER, LOCK	55	4	17-82146M	PIN, ROLL	59	12
13-82197M	WASHER, LOCK (ELECTRIC START MODEL)	29	4	17-82146M	PIN, ROLL	59	18
13-82197M	WASHER, LOCK (ELECTRIC)	33	29	17-82148M	PIN	17	25
13-82197M	WASHER, LOCK (MANUAL .	33	29				
13-82199M	WASHER	7	19				
13-82199M	WASHER, LOCK	31	31				
13-82199M	WASHER, LOCK	35	39				
13-82199M	WASHER, LOCK	57	19				
13-82200M	WASHER, LOCK	33	21				
13-82200M	WASHER, LOCK	49	11				
13-82206M	WASHER, LOCK	9	10				
13-82208M	WASHER, LOCK	9	19				
13-82208M	WASHER, LOCK	45	15				
13-82208M	WASHER, LOCK	47	26				
13-82212M	WASHER, LOCK	21	9				
13-82212M	WASHER, LOCK	23	4				
13-82212M	WASHER, LOCK	25	5				
13-82212M	WASHER, LOCK	37	24				
13-82212M	WASHER, LOCK	49	3				

PARTS INDEX

Part Number	Description	Pg.	Ref. No.	Part Number	Description	Pg.	Ref. No.
17-82151M	PIN () AND BELOW	23	23	23-81959M	BUSHING, PIVOT SHAFT- LOWER	17	14
17-82155M	PIN, ROLL	7	23	23-81961M	COLLAR, THRUST-PIVOT SHAFT	17	16
17-82155M	PIN, SWIVEL	25	19	23-81964M	BUSHING, PIVOT SHAFT- UPPER	17	12
17-82156M	PIN, ROLL	27	30	23-81972M	SPACER, INTAKE COVER TO BASE	7	2
17-82157M	PIN	33	4	23-81979M	SPACEER, CLAMP BRACKET STUD	17	32
17-82364M	PIN, DOWEL	3	9	23-82119M	SPACER, STEERING ARM	23	6
17-82364M	PIN, DOWEL	11	17	23-82796M	THRUST WASHER, REAR	15	59
17-82364M	PIN, DOWEL	11	3	23-82797M	SPACER, PROPELLER NUT	15	58
17-82364M	PIN, DOWEL	15	64	23-82929M	COLLAR	35	43
17-82364M	PIN, DOWEL	21	11	23-83309M	BUSHING, MOUNT	21	5
17-82368M	PINK DOWEL	17	10	23-83310M	COLLAR	27	16
17-82786M	TILT LOCK PIN ASS'Y	19	13	23-84454M	BUSHING, THROTTLE SHAFT	9	14
17-83140M	RIVET	37	10	24-22227	SPRING, TENSION-VENT SCREW	43	6
17-83143M	RIVET	37	8	24-30189	SPRING, BAYONET BODY STEM	41	19
17-83722M	HOOK	59	17	24-80278M	SPRING, SHIFT	13	26
17-83726M	HOOK	59	11	24-80574M	SPRING, THROTTLE VALVE	9	26
17-83944M	TILT LOCK PIN ASS'Y	19	13	24-80575M	SPRING, IDLE SCREW	9	13
18-82051M	PIN	7	28	24-80610M	SPRING	45	4
18-82124M	PIN (COTTER)	25	16	24-80610M	SPRING	47	19
18-82125M	PIN	35	38	24-80615M	SPRING	45	11
18-82125M	PIN, SHIFT CAM	25	15	24-80696M	SPRING, BRUSH	55	16
18-82127M	PIN	25	20	24-80697M	SPRING, BRUSH PLATE	55	17
18-82131M	PIN, COTTER	11	11	24-81103M	SPRING, PAWL	33	8
18-82800M	PIN, COTTER	15	61	24-81667M	WIRE, SOLENOID PULL	51	16
19-80604M	PLUS, STARTER HOUSING	33	2	24-82079M	SPRING, STARTER LOCKOUT	33	31
21-80107M	CHECK VALVE	3	4	24-82085M	SPRING, SHIFT DETENT	25	7
21-80608M	CHECK VALVE	45	6	24-82088M	SPRING, FRICTION PLATE SCREW	17	8
21-80727M	CHECK VALVE ASS'Y	3	3	24-82093M	SPRING, COMPRESSION	23	9
21-84140M	CHECK VALVE	47	21	24-82095M	SPRING	23	20
22-63187	FITTING, FUEL LINE	41	21	24-82101M	SPRING	17	29
22-80122M	FITTING, CRANKCASE DRAIN	3	2	24-82105M	SPRING, REVERSE LOCK	19	12
22-80218M	PLUG, WATER FLUSH (OPTIONAL)	15	65	24-82108M	SPRING, TENSION	25	23
22-81042M	CONNECTOR HOUSING	39	13	24-82109M	SPRING, TENSION	19	3
22-81042M	FUEL CONNECTOR, ENGINE END	41	26	24-82115M	SPRING, STARTER	33	3
22-81917M	PLUG	17	2	24-83202M	SPRING, CHOKE LEVER	9	27
22-81924M	SCREW	13	2	24-83721M	SPRING	59	16
22-82369M	FITTING, GREASE	21	6	24-83725M	SPRING	59	10
22-82369M	FITTING, PIVOT SHAFT BUSHING, GREASE	17	3	24-84461M	SPRING, COMPRESSION	25	10
23-80220M	BUSHING	9	14	24-84462M	SPRING, COMPRESSION	25	11
23-80555M	SPACER, COILE	29	9	25-20415	O-RING, BAYONET BODY STEM	41	18
23-80635M	RETAINER, SHIFT DETENT	25	6	25-80637M	SEAL, SHIFT BRACKET	21	3
23-81136M	RETAINER, COMPRESSION SPRING	23	8	25-80702M	DAMPENER, SOLENOID	55	7
23-81327M	SLEEVE, HOSE	39	15	25-80726M	GROMMET, SOLENOID BRACKET	51	10
23-81622M	SLEEVE, DRIVESHAFT	13	15	25-81589M	GROMMET, BOTTOM COWL (MANUAL)	37	26
23-81842M	SPACER, INNER BEARING	5	10	25-81590M	GROMMET, LEAD WIRE	51	34
23-81861M	SPACER, STEERING ARM	23	7	25-82060M	GROMMET	51	18
23-81930M	BUSHING, SHIFT ROD LEVER	21	4	25-82064M	GROMMET, BOTTOM COWL	37	27
23-81941M	BUSHING, THROTTLE SHAFT	9	16				
23-81945M	BUSHING, STEERING ARM	23	21				
23-81945M	BUSHING, STEERING ARM	23	21				
23-81946M	BUSHING, THROTTLE SHAFT	27	29				

PARTS INDEX

Part Number	Description	Pg.	Ref. No.	Part Number	Description	Pg.	Ref. No.
25-82070M	GROMET, STEERING HANDLE	23	2	27-81320M	GASKET, HOUSING TO TANK	39	6
25-82258M	O-RING, PULL WIRE	51	17	27-81320M	GASKET, HOUSING TO TANK	41	11
25-82260M	O-RING	25	27	27-81555M	GASKET, CYLINDER HEAD	3	20
25-82268M	O-RING, CRANKSHAFT TO DRIVESHAFT	5	9	27-81565M	GASKET, OIL SEAL HOUSING	3	16
25-82274M	O-RING, PIVOT SHAFT BUSHING	17	15	27-81570M	GASKET, EXHAUST COVER	3	29
25-82287M	O-RING BEARING HOUSING	15	32	27-81573M	GASKET, EXHAUST MANIFOLD	11	10
25-82789M	O-RING	39	14	27-81612M	WASHER	21	24
25-82789M	O-RING	41	27	27-81613M	GASKET, DRIVESHAFT HOUSING	11	2
25-82792M	O-RING	49	8	27-81987M	GASKET	13	3
25-84464M	O-RING	25	27	27-82790M	PACKING	49	5
26-80239M	SEAL, WATER PUMP BODY	15	46	27-84166M	GASKET SET, POWERHEAD	3	35
26-81572M	GASKET, EXHAUST MANIFOLD	11	9	27-84177M	GASKET SET, LOWER UNIT	15	65
26-81574M	GASKET, EXHAUST MANIFOLD	11	8	28-81603M	KEY, DRIVESHAFT TO IMPELLER	13	11
26-81607M	SEAL, WATER TUBE	15	62	28-81914M	KEY, CRANKSHAFT TO FLYWHEEL	5	13
26-82230M	OIL SEAL, PROPELLER SHAFT	15	37	28-81916M	KEY, BEARING HOUSING	15	35
26-82235M	OIL SEAL, DRIVESHAFT-UPPER	13	12	29-84452M	BEARING, NEEDLE	5	5
26-82245M	OIL SEAL, CRANKSHAFT (UPPER)	3	14	30-82291M	BEARING, DRIVESHAFT-UPPER	13	13
26-82246M	OIL SEAL, CRANKSHAFT (LOWER)	5	11	30-82295M	BALL BEARING, REVERSE GEAR	15	33
26-84486M	PROTECTOR, OIL SEAL	15	43	30-82307M	BEARING, CRANKSHAFT	5	2
27-25568	GASKET, FILLER CAP TO FUEL TANK	43	8	31-82314M	BEARING, NEEDLE-DRIVESHAFT	13	16
27-28862	GASKET, COVER ASSEMBLY TO FRAME	43	19	31-82315M	BEARING, NEEDLE-PROPELLER SHAFT	15	36
27-54921	GASKET, FUEL GAUGE LENS	43	12	31-82321M	BEARING, FORWARD GEAR	13	21
27-80270M	GASKET, HOUSING TO LENS INDICATOR	41	7	32-33909A3	TUBE	43	10
27-80270M	GASKET, HOUSING TO LENS INDICATOR	39	9	32-80605M	FUEL LINE, FUEL PUMP TO CARBURETOR	49	16
27-80569M	GASKET, REED VALVE	7	8	32-81566M	FUEL LINE, FUEL FILTER TO FUEL PUMP	49	15
27-80571M	GASKET, INTAKE MANIFOLD	7	9	32-81605M	TUBE, WATER (SHORT SHAFT)	15	63
27-80572M	GASKET, CARBURETOR MANIFOLD	7	17	32-81606M	TUBE, WATER (LONG SHAFT)	15	63
27-80590M	GASKET, FLOAT BOWL	9	8	32-82000M	HOSE	3	11
27-80612M	GASKET, CHECK VALVE	45	7	32-82023M	HOSE, BULB TO CONNECTOR	39	18
27-80613M	GASKET, BODY TO BASE	45	5	32-82023M	HOSE, BULB TO CONNECTOR	41	24
27-80613M	GASKET, BODY TO BASE	47	20	32-82025M	HOSE (CONNECTOR HOUSING TO BULB)	39	17
27-80614M	GASKET, BODY TO COVER	45	12	32-82025M	HOSE, CONNECTOR HOUSING TO BULB	41	22
27-80614M	GASKET, BODY TO COVER	47	22	32-82031M	HOSE, WIRE HARNESS	51	41
27-80636M	GASKET, BOTTOM BOWL	21	2	32-82032M	HOSE, WIRE HARNESS	51	40
27-80662M	WASHER	21	19	32-83192M	FUEL HOSE ASS'Y	39	0-2
27-80662M	WASHER	21	23	32-83626M	HOSE, PICKUP	41	12
27-80663M	GASKET, MOUNT	21	17	32-83628M	FUEL LINE ASS'Y	41	0-1
27-80664M	GASKET, RUBBER MOUNT	21	33	33-82371M	SPARK PLUG, B-7HS (NGK)	3	33
27-80690M	GASKET, FLYWHEEL COVER	29	19	34-84453M	REED SET	7	16
27-80757M	GASKET, FUEL PUMP TO CRANKCASE	45	27	35-80617M	FILTER ASS'Y	49	4
27-80757M	GASKET, FUEL PUMP TO CRANKCASE	47	27	35-82783M	ELEMENT, FILTER	49	6

PARTS INDEX

Part Number	Description	Pg.	Ref. No.	Part Number	Description	Pg.	Ref. No.
36-25392A2	FILLER CAP ASSEMBLY	43	3	84-81654M	LEAD WIRE ASS'Y, CHOKE SOLENOID	51	33
36-83617M	FUEL TANK CAP	41	3	84-81660M	WIRE, LEAD	51	35
37-75881	DECAL, FUEL TANK	43	2	84-81660M	WIRE, LEAD 46CM (18 INCH)	57	10
37-81202M	INDICATOR, SHIFT	37	17	84-81661M	WIRE, LEAD	51	36
37-82915M	GRAPHIC, SIDE	37	20	84-81664M	WIRE HARNESS ASS'Y, ENGINE	51	1
37-82962M	DECAL, TOP	41	2	84-82831M	CORD, HIGH TENSION	31	29
37-82984M	DECAL, SIDE	41	1	84-84352M	EXTENSION, LEAD	57	26
37-83058M	DECAL, WITCH PANEL	51	22	84-84353M	CONNECTOR	57	27
37-83213M	GRAPHIC, SIDE	39	1	84-84470M	EXTENSION, WIRE LEAD 0.9M (3 FT)	57	16
39-81095M	PISTON RING SET (STD)	5	4	87-80715M	IGNITION SWITCH ASS'Y	51	25
39-81096M	PISTON RING SET (1ST O.S. 67.25 MM)	5	4	87-80716M	KEY SWITCH ASS'Y	51	23
39-81097M	PISTON RING SET (2ND O.S. 67.50 MM)	5	4	87-81168M	NEUTRAL START SWITCH ASS'Y	51	20
41-80565M	PIN, PISTON	5	7	87-81662M	STOP SWITCH (MANUAL)	37	28
43-80704M	PINION, STARTER	55	10	87-81663M	STOP SWITCH ASS'Y	57	8
43-80711M	RING GEAR(ELECTRIC START MODEL)	29	2	88-80007M	B, CHOKE LAMP (12V-3W)	51	29
43-81623M	GEAR, PINION	13	18	88-80007M	BULB	57	21
43-81625M	GEAR, FORWARD	13	22	88-81522M	FUSE	51	6
43-81631M	GEAR, REVERSE	13	29	88-81522M	FUSE	57	13
44-81643M	SHAFT, PROPELLER	13	27	88-81655M	FUSE HOLDER ASS'Y	51	5
45-81620M	DRIVESHAFT (SHORT SHAFT)	13	10	89-81665M	SOLENOID ASS'Y, CHOKE	51	8
45-81621M	DRIVESHAFT (LONG SHAFT)	13	10	91-81669M	TOOL KIT	37	29
46-81599M	BODY, WATER PUMP (STD)	15	40	253-6799M	FLYWHEEL MAG ASS'Y (MANUAL START MODEL)	29	0-1
46-83307M	BODY, WATER PUMP (CHROME, OPTIONAL)	15	40	253-6981M	FLYWHEEL MAG ASS'Y (ELECTRIC START MODEL)	29	0-1
47-81604M	IMPELLER, WATER PUMP	15	41	253-7169M	FLYWHEEL MAG ASS'Y (MANUAL START MODEL)	29	0-1
50-80691M	STARTER MOTOR ASS'Y	55	0-1	253-7170M	FLYWHEEL ASS'Y (MANUAL START MODEL)	29	1
50-81105M	STARTER SHEAVE	33	5	253-7171M	FLYWHEEL ASS'Y (MANUAL START MODEL)	29	1
50-83211M	STARTER ASS'Y	33	0-1	463-6849M	CRANKSHAFT ASS'Y	5	1
52-81644M	CLUTCH	13	23	761-6785M	PISTON (STD 66.97 MM)	5	3
53-28903	FASTENER, RETAINING FRAME TO FUEL TANK	43	21	761-6786M	PISTON (STD 66.98 MM)	5	3
53-80678M	RING, CROSS PIN	15	47	761-6787M	PISTON (1ST O.X. 67.25 MM)	5	3
53-82328M	SNAP RING	9	24	761-6788M	PISTON (2ND O.S. 67.50 MM)	5	3
53-82330M	SNAP RING	19	16	761-6937M	PISTON (STD 66.96 MM)	5	3
53-82331M	SNAP RING	33	7	870-6851M	CRANKCASE ASS'Y	3	1
53-82345M	SNAP RING	5	8	968-6848M	HEAD, CYLINDER	3	19
53-83205M	SNAP RING	9	30	1225-1529	FUEL TANK	43	1
54-80722M	CLAMP, WIRE HARNESS	51	30	1225-1529A16	FUEL TANK, COMPLETE (SEE NOTE)	43	0-1
54-80752M	CLAMP, HOSE	39	19	1252-6836M	FUEL TANK ASS'Y	39	0-1
54-80752M	CLAMP, HOSE	41	25	1383-6850M	CARBURETOR ASS'Y	9	0-1
54-82034M	CLAMP	3	34	1383-6959M	CARBURETOR ASS'Y	9	0-1
54-82034M	CLAMP	49	18	1484-6794M	CLAMP BRACKET, PORT	17	17
54-82034M	CLAMP	51	39	1484-6795M	CLAMP BRACKET, STARBOARD	17	18
54-82035M	CLAMP	51	38	1485-6796M	SWIVEL BRACKET	17	1
54-82036M	CLAMP, FUSE HOLDER	51	7	1587-6854M	DRIVESHAFT HOUSING	11	1
54-82046M	CLAMP, HOSE	3	12	1651-6855M	GEAR HOUSING	13	1
54-82047M	CLAMP	49	17	1651-6894M	GEAR HOUSING ASS'Y (SHOFT SHAFT)	13	0-1
54-83764M	CLAMP, PICKUP HOSE	41	13	1651-6895M	GEAR HOUSING ASS'Y (LONG SHAFT)	13	0-1
67-81114M	DECAL, SIDE SET	37	2				
79-84311M	TACHOMOTER KIT	57	0-1				
84-80052M	EXTENSION, STOP SWITCH HARNESS	57	11				
84-80685M	LEAD WIRE	29	15				
84-80720M	WIRE HARNESS ASS'Y, SWITCH PANEL	51	32				

PARTS INDEX

Part Number	Description	Pg.	Ref. No.	Part Number	Description	Pg.	Ref. No.
2168-6852M	TOP COWL ASS'Y	37	1				
2169-6960M	HOUSING, STARTER	33	1				