



# PARTS CATALOG

## MARINER 40

### SERIAL NUMBER

40B (CDI IGNITION/THRU PROP. EXHAUST) .....	.676-B002781 AND UP (M)
40B (CDI IGNITION/THRU PROP. EXHAUST) .....	.676-B102786 AND UP (E)
40B (CDI IGNITION/THRU PROP. EXHAUST) .....	.676-B302426 AND UP (ML)
40B (CDI IGNITION/THRU PROP. EXHAUST) .....	.676-B405251 AND UP (EL)

# TABLE OF CONTENTS:

C.D.I. MAGNETO IGNITION .....	8
CARBURETOR .....	24
CLAMP AND SWIVEL BRACKET/REVERSE LOCK .....	34
COWLING .....	2
CRANKCASE AND CYLINDER HEAD .....	16
CRANKSHAFT AND PISTON .....	20
DRIVESHAFT HOUSING .....	42
ELECTRIC START .....	12
ELECTRIC STARTER MOTOR .....	14
FUEL LINES AND FILTER .....	28
FUEL PUMP .....	26
FUEL TANK AND FUEL LINE ASSEMBLY .....	50
FUEL TANK ASSEMBLY .....	52
GEAR SHIFT LINKAGE .....	32
GEARHOUSING ASS'Y .....	44
INTAKE MANIFOLD .....	22
MOUNTING SYSTEM .....	40
OPTIONAL PARTS .....	56
PARTS INDEX .....	58
RECOIL STARTER .....	6
REMOTE CONTROL ATTACHING KIT .....	54
STEERING HANDLE .....	38
THROTTLE CONTROL .....	30

**NOTE:** Indented description indicate that these parts are included in preceeding assembly.

**AR** = As Required

**NSS** = Not Sold Separate

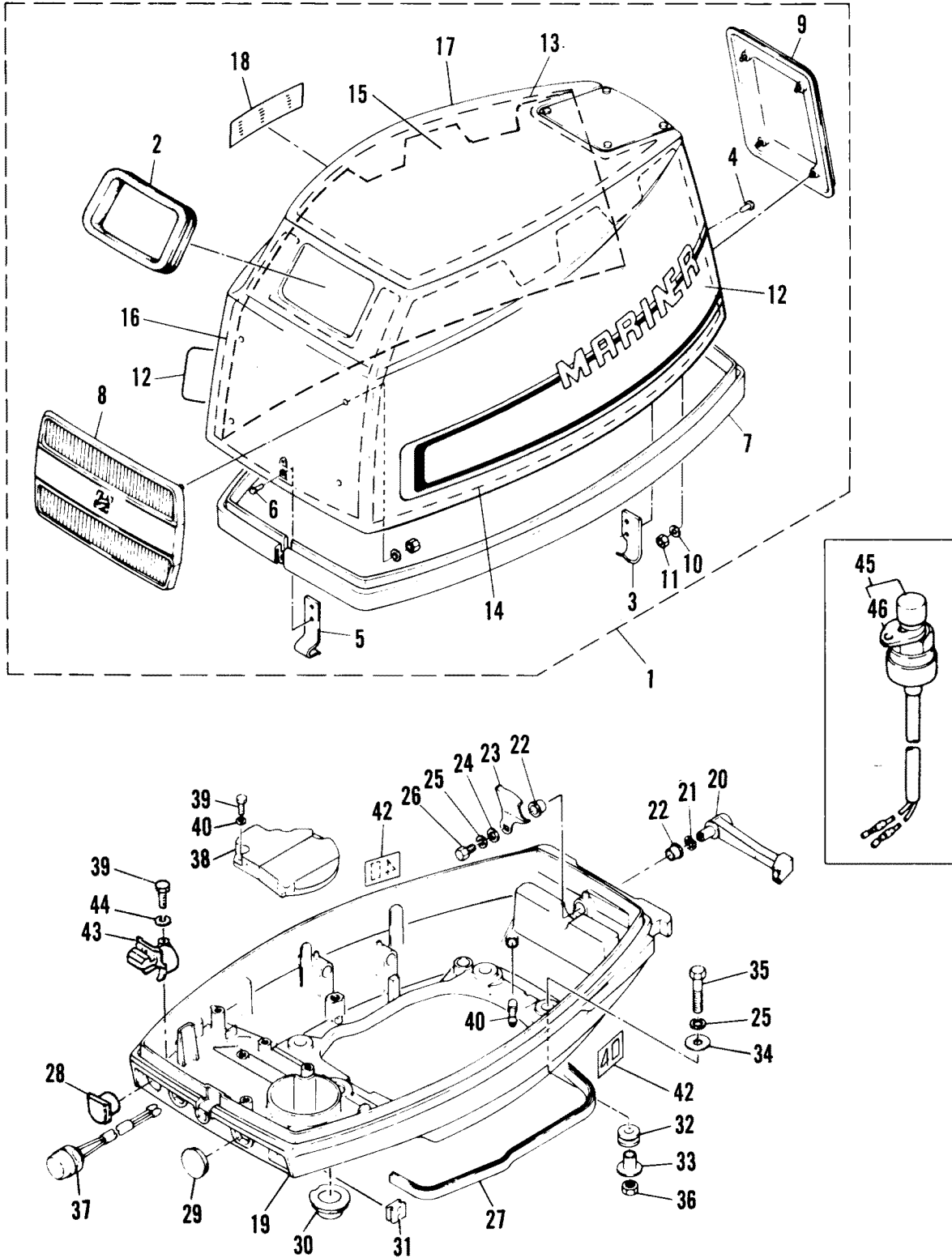
**OPT** = Optional

**NS** = Not Shown

**THESE PARTS BOOKS/FICHE CARD ARE COPYRIGHTED AND MAY NOT BE DISTRIBUTED OR REPRODUCED IN ANY OTHER FORMAT BY ANYONE OTHER THAN MERCURY MARINE WITHOUT THE PRIOR WRITTEN CONSENT OF MERCURY MARINE.**

THIS PAGE INTENTIONALLY LEFT BLANK

# COWLING

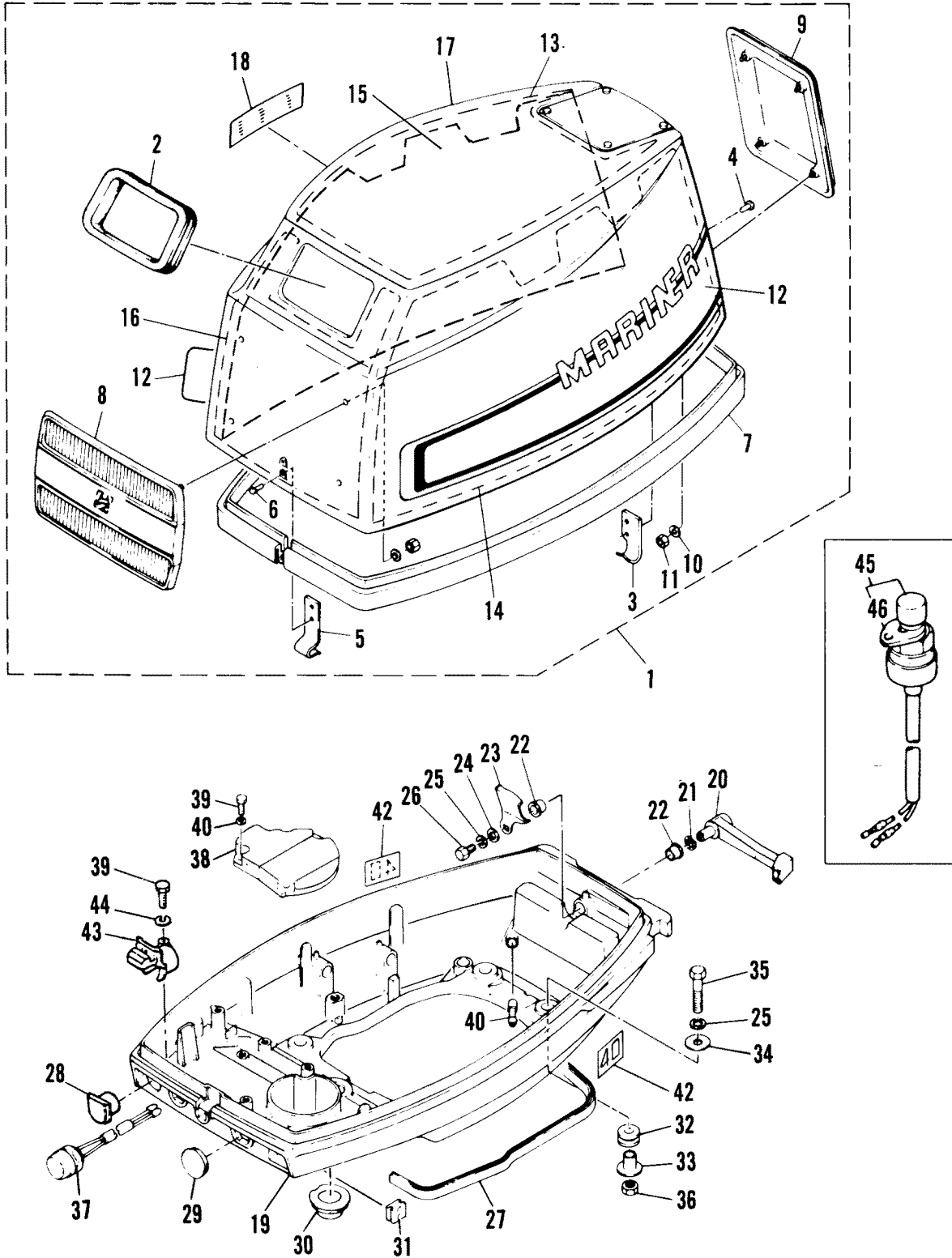


# COWLING

REF. NO.	PART NO.	SYM.	QTY.	DESCRIPTION
1	2168-7103M		1	TOP COWLING ASS'Y
2	80601M		1	SEAL, RUBBER
3	83212M		1	BRACKET
4	17-83599M		2	RIVET
5	83137M		1	HOOK
6	17-83143M		2	RIVET
7	83600M		1	SEAL
8	83601M		1	EMBLEM, FRONT
9	83602M		1	EMBLEM, REAR
10	12-82211M		8	WASHER
11	11-82388M		8	NUT
12	37-82866M		1	DECAL SET
13	97109M		1	SOUND BLANKET ,1 SERIAL 00004416-09999999
	83926M		1	SOUND BLANKET, 1 SERIAL 00000000-00004415
14	97110M		1	SOUND BLANKET, 2 SERIAL 00004416-09999999
	83927M		1	SOUND BLANKET, 2 SERIAL 00000000-00004415
15	97111M		1	SOUND BLANKET, 2 SERIAL 00004416-09999999
	83927M		1	SOUND BLANKET, 2 SERIAL 00000000-00004415
16	97112M		1	SOUND BLANKET, 3 SERIAL 00004416-09999999
	83928M		0	SOUND BLANKET, 3 SERIAL 00000000-00004415
17	97113M		1	SOUND BLANKET, 4 SERIAL 00004416-09999999
	83929M		1	SOUND BLANKET, 4 SERIAL 00000000-00004415
18	37-81202M		1	DECAL, SHIFT
19	2168-7984M		1	COWLING, BOTTOM
20	83605M		1	LEVER, CLAMP
21	13-81869M		1	WAHSER, WAVE
22	23-81949M		2	BUSHING
23	81145M		1	LEVER, CLAMP
24	12-81794M		1	WASHER
25	13-82197M		5	WASHER, LOCK
26	10-84315M		1	BOLT
27	83606M		1	SEAL
28	25-93100M		1	GROMMET (M AND ML)
29	25-83607M		1	GROMMET
30	25-83608M		1	GROMMET
31	25-83609M		1	GROMMET
32	25-93101M		4	GROMMET
33	23-83610M		4	BUSHING
34	12-81796M		4	WASHER
35	10-84237M		4	BOLT
36	11-83611M		4	NUT
37	87-93102M		1	STOP SWITCH (M AND E)
38	93103M		1	COVER

CONTINUED ON NEXT PAGE ➡

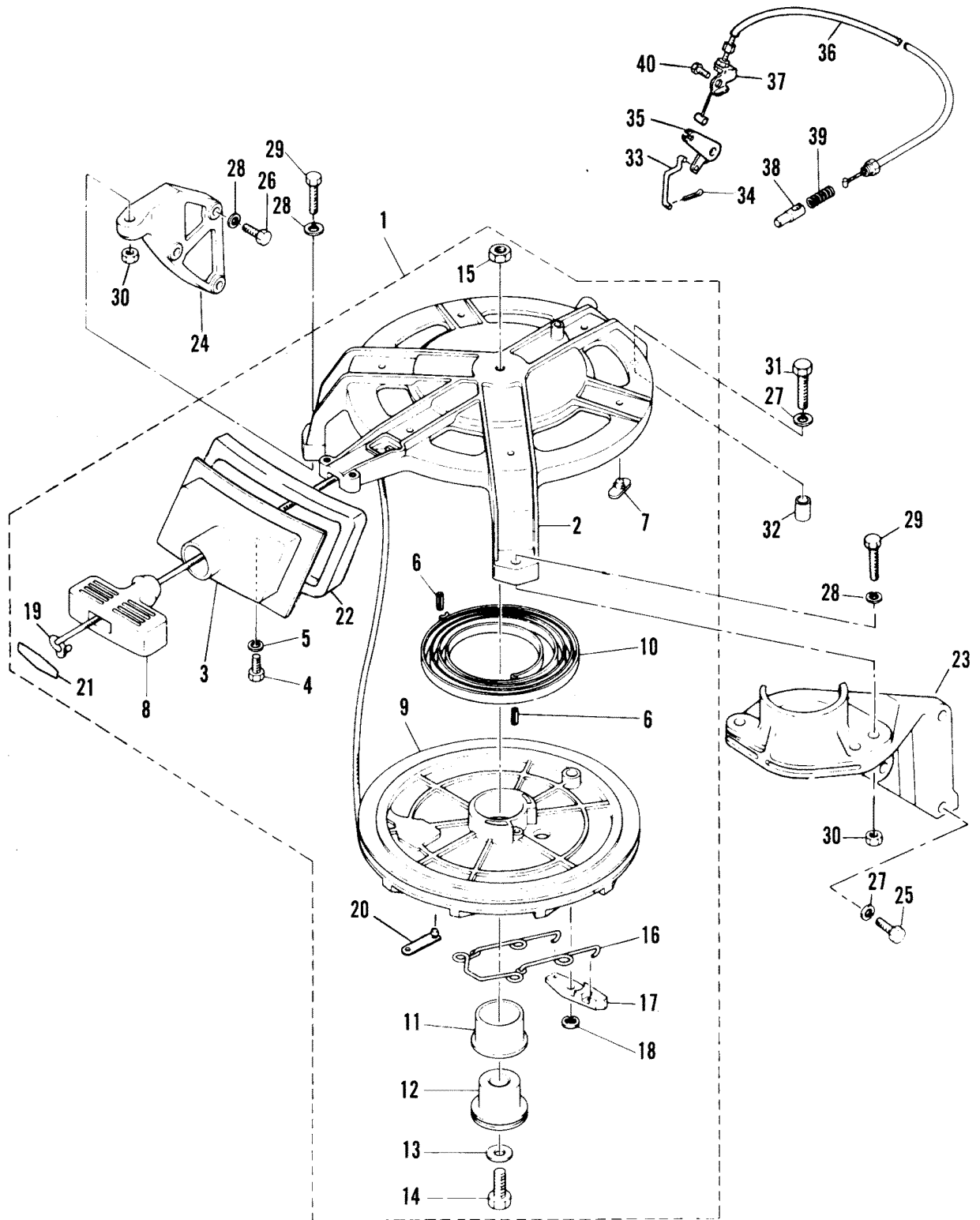
# COWLING



# COWLING

REF. NO.	PART NO.	SYM.	QTY.	DESCRIPTION
39	10-82405M		4	BOLT
40	12-82198M		3	WASHER, LOCK
41	22-83616M		1	FITTING
42	37-83761M		2	DECAL, HP
43	93104M		1	PLATE
44	13-82197M		1	WASHER
45	87-94537M		1	SWITCH ASS'Y, KILL (OPT)
46	81531M		1	STOPPER (OPT)

# RECOIL STARTER

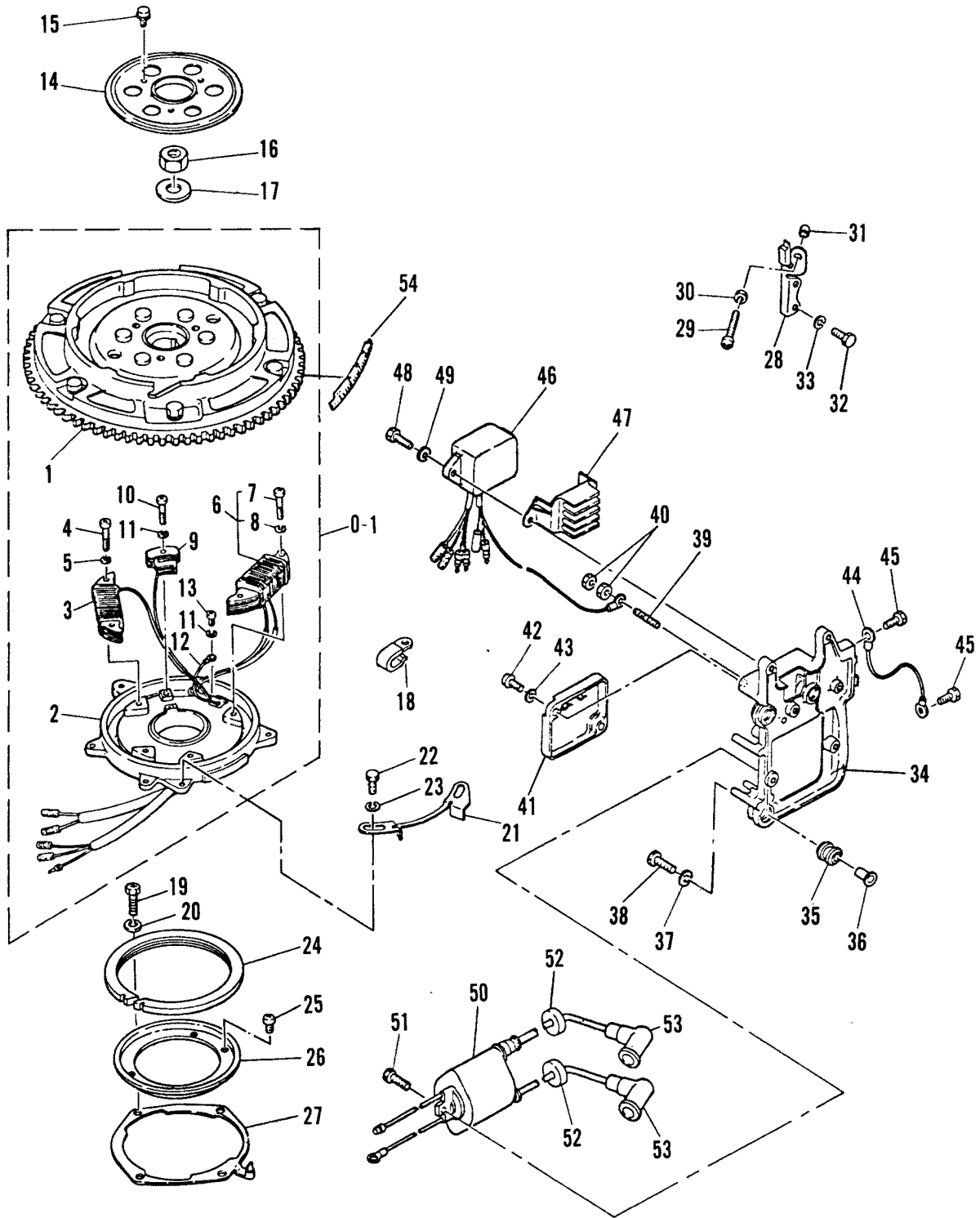




# RECOIL STARTER

REF. NO.	PART NO.	SYM.	QTY.	DESCRIPTION
1	2169-7101M		1	STARTER ASS'Y
2	2169-7102M		1	HOUSING STARTER
3	83583M		1	GUIDE, STARTER ROPE
4	10-84247M		2	BOLT
5	13-82199M		2	WASHER, LOCK
6	17-82157M		2	PIN, ROLL
7	23-83585M		6	BUSHING
8	80063M		1	HANDLE, STARTER
9	50-83587M		1	STARTER, SHEAVE
10	24-83588M		1	SPRING, STARTER
11	23-83589M		1	BUSHING
12	23-83590M		1	SPACER
13	12-81801M		1	WASHER
14	10-84342M		1	BOLT
15	11-82382M		1	NUT
16	24-83591M		1	SPRING DRIVE PAWL
17	84894M		1	PAWL, DRIVE
18	53-84895M		1	SNAP RING
19	79629A1		1	STARTER ROPE
20	54-84893M		1	CLIP
21	84892M		1	COVER
22	93107M		1	SEAL
23	83629M		1	BRACKET(PORT)
24	83593M		1	BRACKET(STARBOARD)
25	10-82441M		4	BOLT
26	10-82405M		3	BOLT
27	13-82200M		5	WASHER,LOCK
28	13-82197M		5	WASHER,LOCK
29	10-84237M		2	BOLT
30	11-82380M		2	NUT
31	10-84236M		1	BOLT
32	17-82162M		1	SPACER
33	83595M		1	ROD
34	18-82125M		1	PIN,COTTER
35	83596M		1	LEVER
36	83597M		1	CABLE,STARTER STOP
37	93106M		1	BRACKET
38	81106M		1	PLUNGER,STARTER STOP
39	24-82079M		1	SPRING
40	10-84303M		1	BOLT

# C.D.I. MAGNETO IGNITION

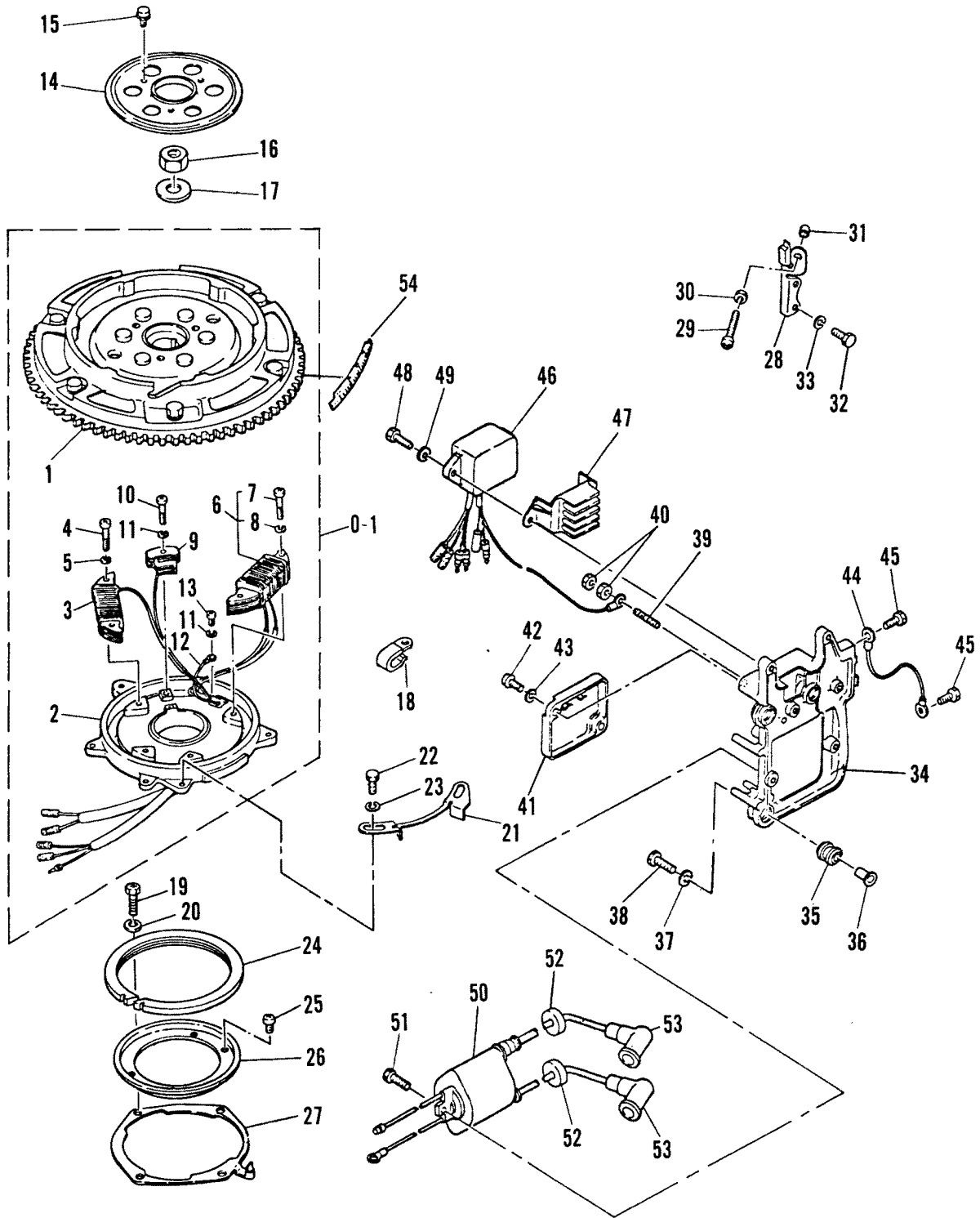


# C.D.I. MAGNETO IGNITION

REF. NO.	PART NO.	SYM.	QTY.	DESCRIPTION
0-1	253-7985M		1	FLYWHEEL MAGNETO ASS'Y (E AND EL)
	253-7986M		1	FLYWHEEL MAGNETO ASS'Y (M AND ML)
1	M-7987M		1	FLYWHEEL (E AND EL)
	253-7988M		1	FLYWHEEL (M AND ML)
2	93108M		1	BASE ASS'Y MAGNETO
3	84879M		1	COIL,IGNITION
4	10-84880M		2	SCREW
5	13-82186M		2	WASHER
6	93049M		1	COIL ASS'Y LIGHTING
7	10-84880M		2	SCREW
8	13-82186M		2	WASHER
9	84877M		1	PULSER
10	10-84882M		1	SCREW
11	13-82184M		3	WASHER
12	84-84883M		1	LEAD WIRE
13	10-82499M		1	SCREW
14	93109M		1	COVER
15	10-93110M		3	BOLT
16	11-81773M		1	NUT
17	12-84436M		1	WASHER
18	54-82042M		1	CLAMP
19	10-84655M		4	SCREW
20	13-82193M		4	WASHER
21	93111M		1	STOP,MAGNETO BASE
22	10-93112M		1	BOLT
23	13-82197M		1	WASHER
24	83566M		1	RETAINER,MAGNETO BASE
25	10-83568M		4	SCREW
26	83567M		1	RETAINER,MAGNETO BASE
27	83569M		1	PLATE,BASE FRICTION
28	83579M		1	STOP,MAGNETO BASE
29	10-83924M		1	SCREW
30	11-82381M		1	NUT
31	81415M		1	CAP
32	10-84247M		2	BOLT
33	13-82197M		8	WASHER, LOCK
34	93113M		1	BRACKET
35	25-93114M		3	DAMPER
36	23-82851M		3	COLLAR
37	12-82979M		3	WASHER
38	10-82405M		3	BOLT
39	16-84870M		1	STUD
40	11-82380M		2	NUT

CONTINUED ON NEXT PAGE ➡

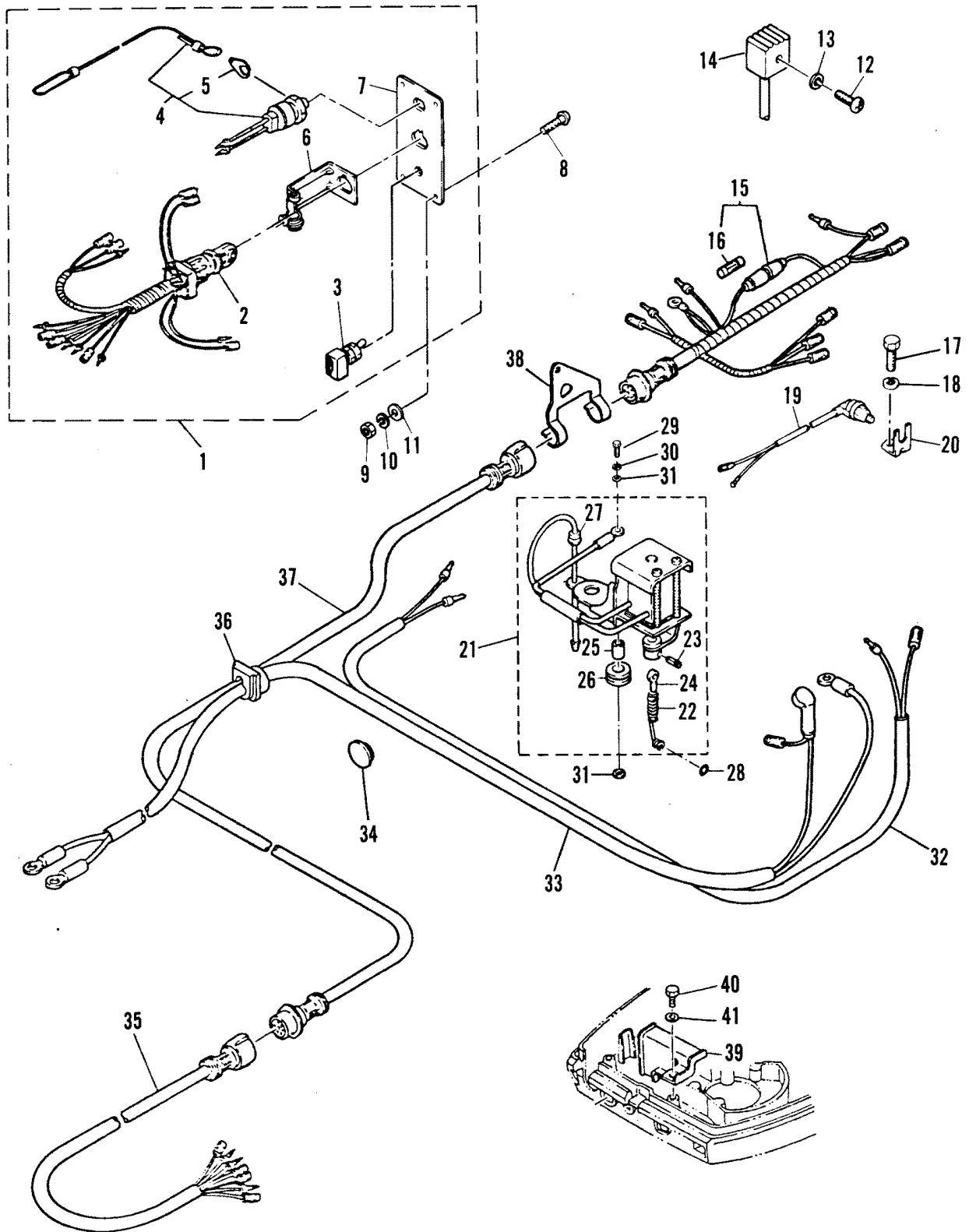
# C.D.I. MAGNETO IGNITION



## C.D.I. MAGNETO IGNITION

REF. NO.	PART NO.	SYM.	QTY.	DESCRIPTION
41	93115M		1	COVER
42	10-83356M		2	SCREW
43	12-82196M		2	WASHER
44	84-81250M		1	WIRE,GROUND
45	10-84303M		2	BOLT
46	84872M		1	I. UNIT ASS'Y
47	93116M		1	HOLDER
48	10-82405M		2	BOLT
49	13-82199M		2	WASHER
50	84874M		1	IGNITION COIL ASS'Y
51	10-83539M		2	BOLT
52	25-82069M		2	GROMMET
53	80935M		2	SPARK PLUG CAP,NOISE SUPPRESSOR
	82788M		2	SPARK PLUG CAP
54	37-84888M		1	DECAL,TIMING <b>SERIAL 00004416-09999999</b>

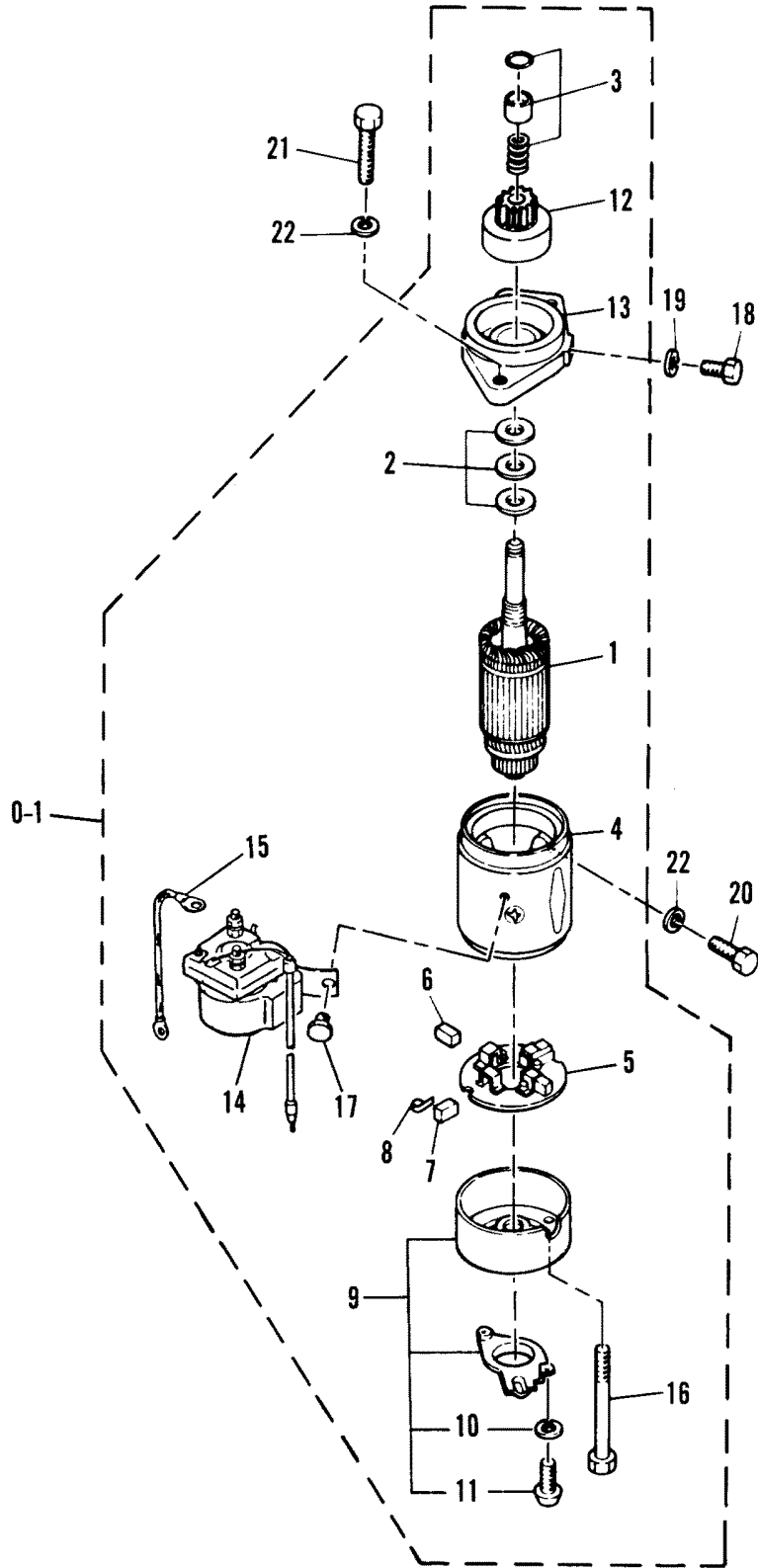
# ELECTRIC START



# ELECTRIC START

REF. NO.	PART NO.	SYM.	QTY.	DESCRIPTION
1	84942M		1	SWITCH PANEL ASS'Y
2	87-84943M		1	MAIN SWITCH
3	87-84944M		1	SWITCH,CHOKE
4	87-84945M		1	KILL SWITCH ASS'Y
5	81531M		1	STOPPER
6	81537M		1	STAY,CORD CLAMP
7	92661M		1	SWITCH PANEL
8	10-84946M		4	SCREW
9	11-82378M		4	NUT
10	13-82193M		4	WASHER
11	12-82196M		4	WASHER
12	10-83108M		1	SCREW
13	13-82193M		1	WASHER <b>SERIAL 00000000-00004415</b>
14	81652M		1	RECTIFIER
15	84-93117M		1	HARNESS ASS'Y
16	88-81522M		1	FUSE
17	10-84247M		1	BOLT
18	13-82197M		1	WASHER,LOCK
19	87-84938M		1	NEUTRAL START SWITCH
20	83634M		1	BRACKET
21	93118M		1	SOLENOID COIL ASS'Y
22	84-83637M		1	WIRE,PULL
23	17-82145M		1	PIN,ROLL
24	84411M		1	HOOK,WIRE PULL
25	23-83639M		2	COLLAR
26	25-83638M		2	GROMMET
27	25-80726M		1	GROMMET
28	25-82258M		1	O-RING
29	10-82419M		2	BOLT
30	13-82193M		2	WASHER,LOCK
31	12-83640M		4	WASHER
32	84-93119M		1	WIRE HARNESS
33	84-93120M		1	WIRE HARNESS ASS'Y
34	82066M		1	GROMMET
35	84-84711M		1	WIRE HARNESS EXTENSION
36	25-94476M		1	GROMMET
37	84960M		1	WIRE HARNESS EXTENSION
38	94477M		1	BRACKET,HARNESS
39	97066M		1	CLAMP <b>SERIAL 00004416-09999999</b>
40	10-84303M		1	BOLT <b>SERIAL 00004416-09999999</b>
41	13-82199M		1	WASHER <b>SERIAL 00004416-09999999</b>

# ELECTRIC STARTER MOTOR

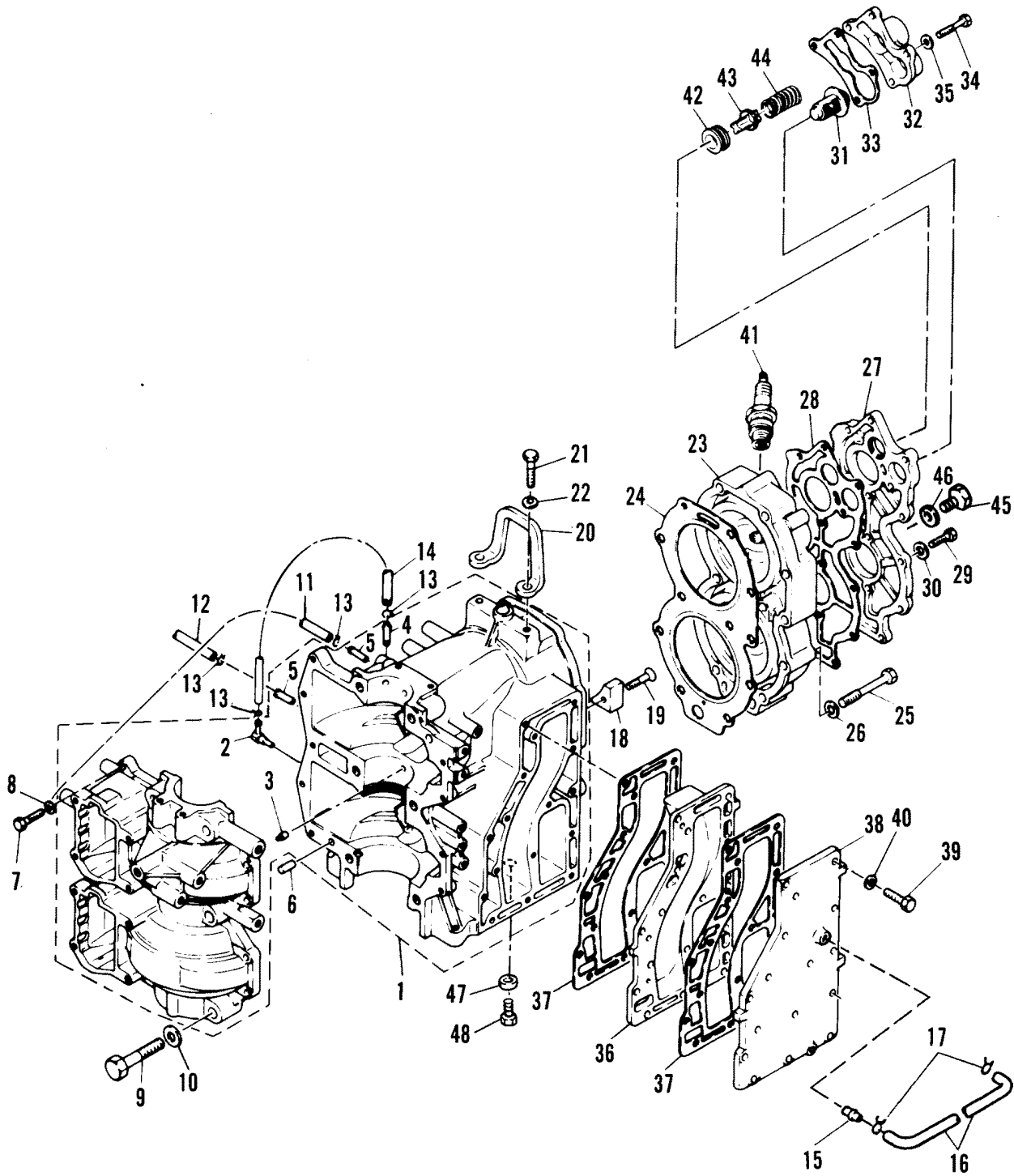




# ELECTRIC STARTER MOTOR

REF. NO.	PART NO.	SYM.	QTY.	DESCRIPTION
0-1	50-92669M		1	ELECTRIC MOTOR ASS'Y
1	83651M		1	ARMATURE
2	12-83652M		1	WASHER KIT
3	92671M		1	STOP RING KIT
4	81493M		1	STATOR
5	81507M		1	BRUSH HOLDER
6	94475M		2	BRUSH
7	94478M		2	BRUSH
8	24-81496M		4	SPRING,BRUSH
9	81499M		1	REAR COVER ASS'Y
10	13-82184M		2	WASHER
11	M-82515M		2	SCREW
12	81504M		1	GEAR
13	83654M		1	FRONT BRACKET
14	89-84933M		1	SOLENOID
15	92672M		1	WIRE,LEAD
16	10-81500M		2	BOLT
17	10-84315M		2	BOLT
18	10-82436M		1	BOLT
19	13-82215M		1	WASHER,LOCK
20	10-84342M		1	BOLT
21	10-82441M		2	BOLT
22	13-82200M		3	WASHER,LOCK

# CRANKCASE AND CYLINDER HEAD

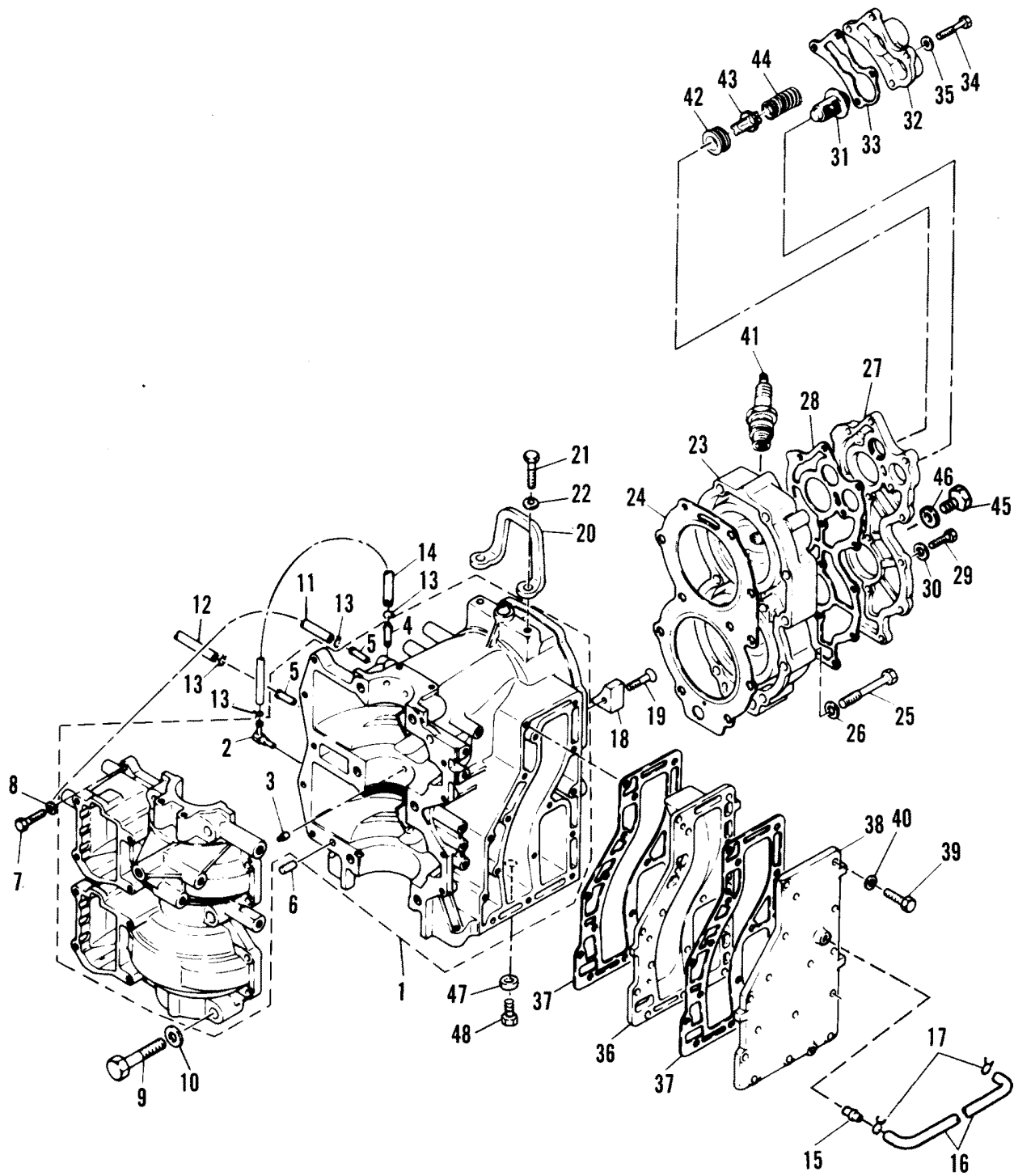


# CRANKCASE AND CYLINDER HEAD

REF. NO.	PART NO.	SYM.	QTY.	DESCRIPTION
1	870-7989M		1	CRANKCASE ASS'Y
2	21-80727M		1	CHECK VALVE ASS'Y
3	17-81258M		2	PIN,DOWEL
4	22-80122M		1	FITTING,DRAIN
5	21-83329M		2	FITTING,DRAIN
6	17-82368M		2	PIN,DOWEL
7	10-82405M		9	BOLT
8	12-81792M		9	WASHER
9	10-83327M		6	BOLT
10	12-81807M		6	WASHER
11	32-82000M		1	HOSE
12	32-81999M		1	HOSE
13	54-82046M		6	CLAMP
14	32-83328M		1	HOSE
15	22-80756M		1	FITTING,WATER
16	32-94479M		1	HOSE
17	54-82047M		2	CLAMP
18	83330M		1	ANODE
19	10-82168M		1	SCREW
20	83331M		1	BRACKET,ENGINE
21	10-82439M		2	BOLT
22	13-82200M		2	WASHER,LOCK
23	968-6983M		1	HEAD,CYLINDER
24	27-83332M		1	GASKET,CYLINDER HEAD
25	10-82408M		11	BOLT
26	12-80564M		11	WASHER
27	94480M		1	COVER,CYLINDER HEAD
28	27-83334M		1	GASKET,HEAD COVER
29	10-83539M		11	BOLT
30	13-82199M		11	WASHER,LOCK
31	81098M		1	THERMOSTAT
32	83335M		1	COVER,THERMOSTAT
33	27-83336M		1	GASKET,THERMOSTAT
34	10-84237M		4	BOLT
35	13-82199M		4	WASHER,LOCK
36	83337M		1	INNER COVER,EXHAUST
37	27-83338M		2	GASKET, EXHAUST COVER
38	94481M		1	OUTER COVER,EXHAUST
39	10-82405M		16	BOLT
40	13-82199M		16	WASHER
41	33-82372M		2	SPARK PLUG(B-8HS)NGK
42	25-82067M		1	GROMMET
43	81267M		1	VALVE,PRESSURE CONTROL

CONTINUED ON NEXT PAGE ➡

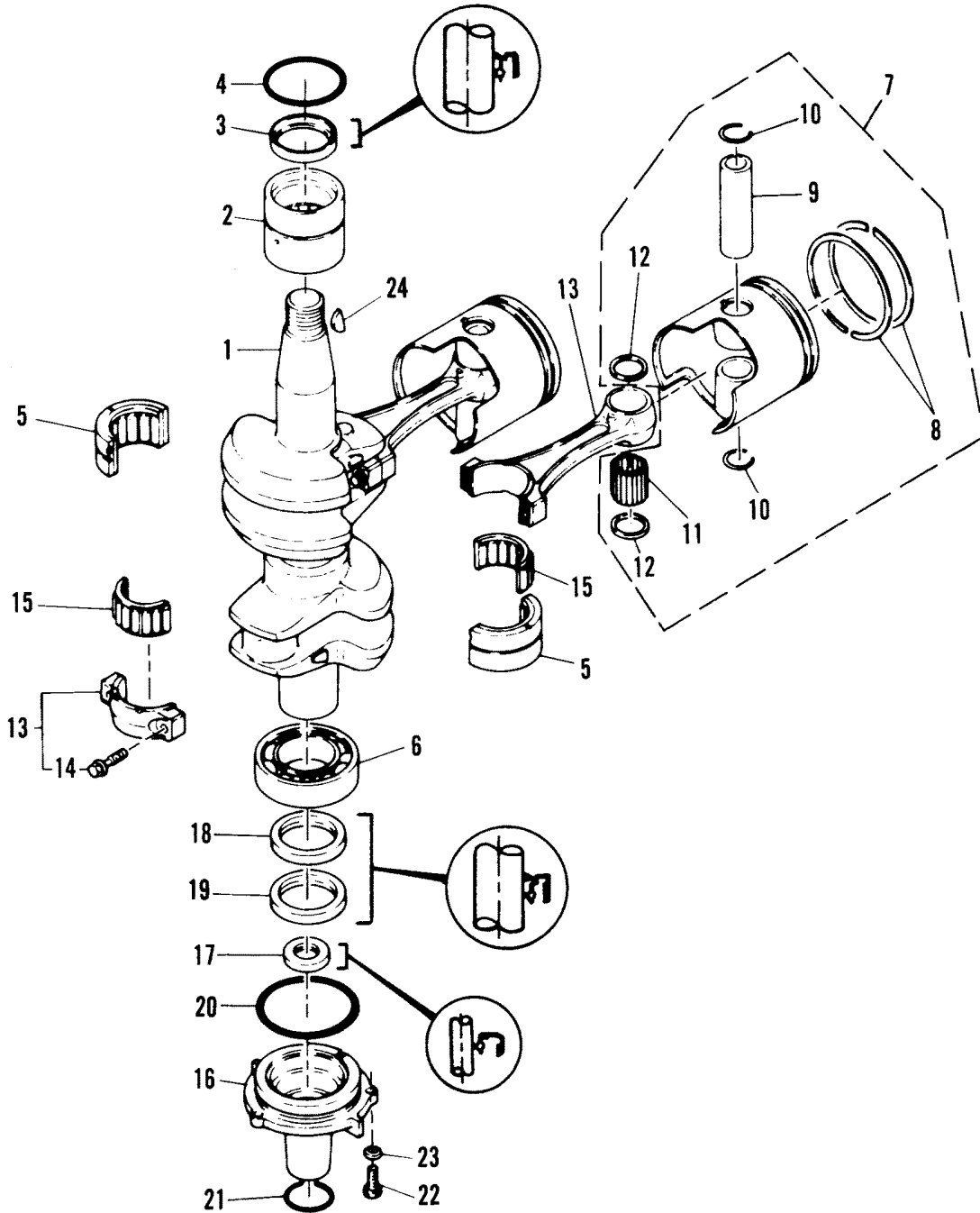
# CRANKCASE AND CYLINDER HEAD



## CRANKCASE AND CYLINDER HEAD

REF. NO.	PART NO.	SYM.	QTY.	DESCRIPTION
44	24-83340M		1	SPRING
45	22-81926M		1	PLUG
46	27-81990M		1	GASKET,PLUG
47	83394M		1	ANODE
48	10-91725M		1	BOLT
-	<b>94482M</b>		<b>1</b>	<b>POWERHEAD ASSEMBLY, COMPLETE (SEE NOTE) REPLACEMENT PARTS</b>
-	<b>27-94483M</b>		<b>1</b>	<b>GASKET SET, POWERHEAD REPLACEMENT PARTS</b>

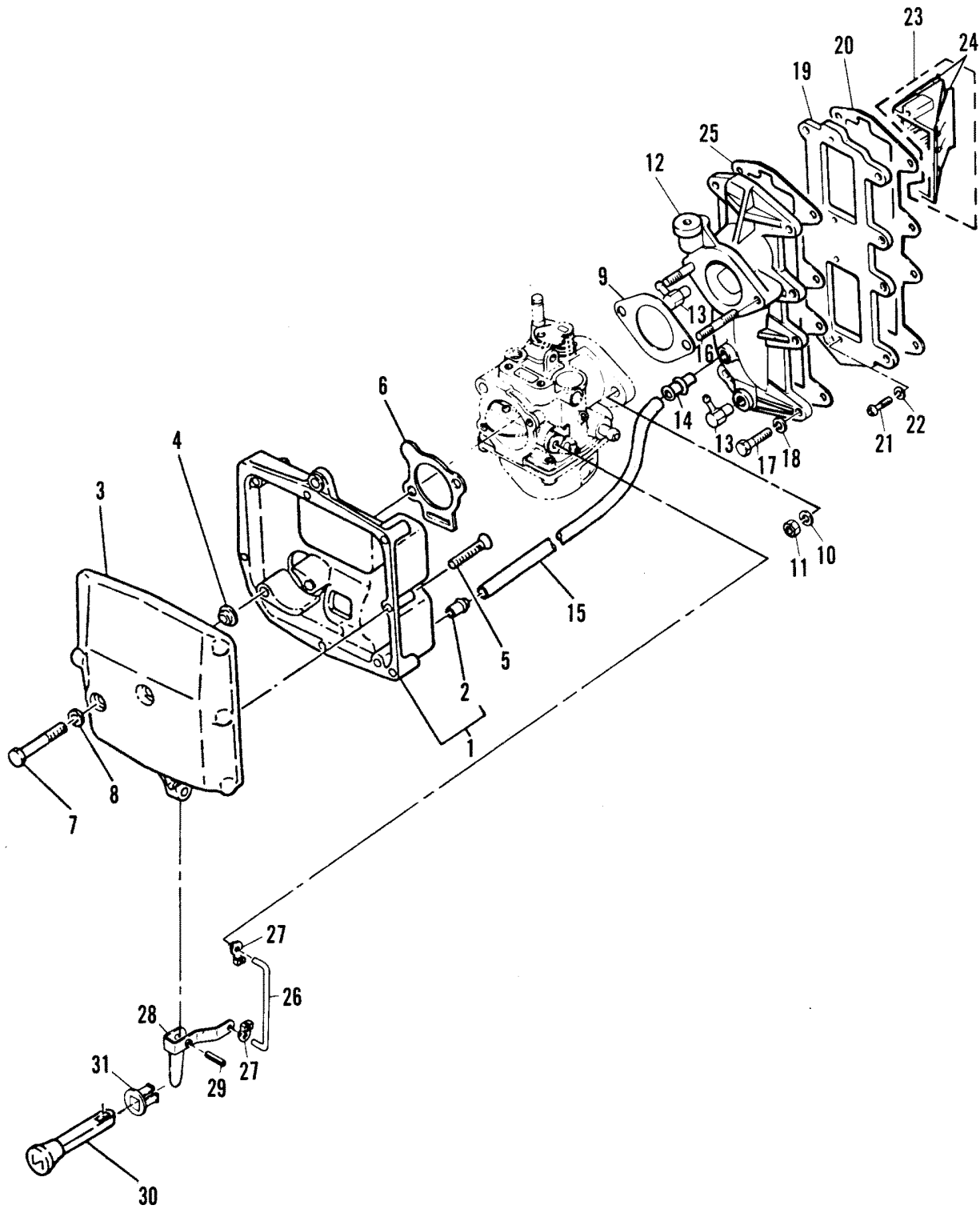
# CRANKSHAFT AND PISTON



# CRANKSHAFT AND PISTON

REF. NO.	PART NO.	SYM.	QTY.	DESCRIPTION
1	463-6984M		1	CRANKSHAFT
2	31-83341M		1	BEARING,NEEDLE
3	26-82249M		1	OIL SEAL
4	25-82276M		1	O-RING
5	31-82313M		1	BEARING,NEEDLE
6	30-82304M		1	BEARING
7	761-8015M		2	PISTON ASS'Y (STANDARD)
	761-8016M		AR	PISTON ASS'Y (1ST OVER SIZE 75.25 MM)
	761-8017M		AR	PISTON ASS'Y (2ND OVER SIZE 75.50MM)
8	39-83896M		2	PISTON RING SET(STANDARD)
	39-83897M		AR	PISTON RING SET (1ST OVER SIZE 75.25 MM)
	39-83898M		AR	PISTON RING SET (2ND OVER SIZE 75.50MM)
9	41-83345M		2	PIN,PISTON
10	53-81264M		4	CLIP,PISTON PIN
11	29-82353M		56	BEARING,NEEDLE
12	12-81831M		4	WASHER
13	629-8401M		2	CONNECTING ROD ASS'Y
14	10-81715M		4	BOLT
15	31-82311M		2	BEARING,NEEDLE
16	97068M		1	HOUSING,OIL SEAL <b>SERIAL 00003931-09999999</b>
	94484M		1	HOUSING,OIL SEAL <b>SERIAL 00000000-00003930</b>
17	26-83347M		1	OIL SEAL
18	26-97069M		1	OIL SEAL <b>SERIAL 00003931-09999999</b>
	26-82248M		1	OIL SEAL <b>SERIAL 00000000-00003930</b>
19	26-82248M		1	OIL SEAL
20	25-82286M		1	O-RING
21	25-83348M		1	O-RING
22	10-84247M		3	BOLT
23	12-82214M		3	WASHER
24	28-81915M		1	KEY,FLYWHEEL

# INTAKE MANIFOLD

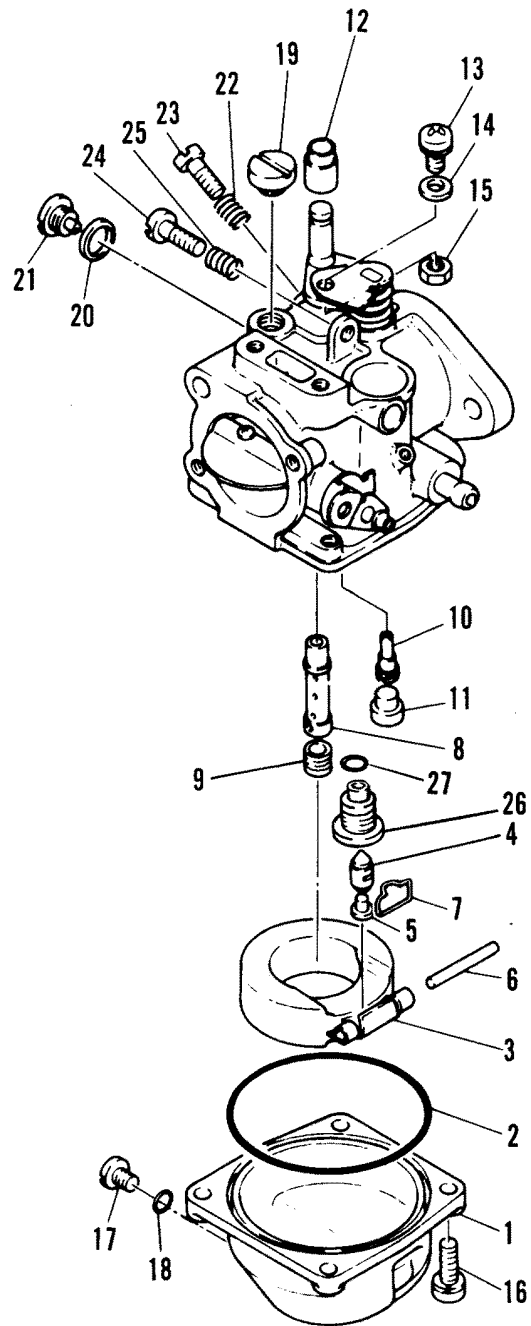




# INTAKE MANIFOLD

REF. NO.	PART NO.	SYM.	QTY.	DESCRIPTION
1	94485M		1	COVER BASE ASS'Y
2	22-80756M		1	FITTING
3	94486M		1	COVER
4	23-94487M		2	COLLAR
5	10-94488M		7	SCREW
6	27-94489M		1	GASKET,COVER
7	10-94490M		2	BOLT
8	12-82213M		2	WASHER
9	27-83352M		1	GASKET,CARBURETOR
10	13-82197M		2	WASHER,LOCK
11	11-82380M		2	NUT
12	97114M		1	MANIFOLD,INTAKE <b>SERIAL 00004416-09999999</b>
	94491M		1	MANIFOLD INTAKE <b>SERIAL 00000000-00004415</b>
13	21-80727M		2	CHECK VALVE
14	22-94492M		1	FITTING
15	32-82006M		1	HOSE
16	16-81728M		2	STUD
17	10-82405M		8	BOLT
18	13-82197M		8	WASHER,LOCK
19	83354M		1	MANIFOLD,INTAKE
20	27-83355M		1	GASKET,INTAKE MANIFOLD
21	10-83356M		4	SCREW
22	13-82193M		4	WASHER,LOCK
23	34-94493M		2	REED VALVE ASS'Y
24	34-84954M		1	REED SET(REED STOPS NOT INCLUDED)
25	27-83360M		1	GASKET,INTAKE MANIFOLD
26	83358M		1	ROD,CHOKE LINK
27	81191M		2	RETAINER,CHOKE LEVER
28	94494M		1	LEVER,CHOKE
29	17-82156M		1	PIN,ROLL
30	83960M		1	KNOB,CHOKE
31	25-84760M		1	GROMMET

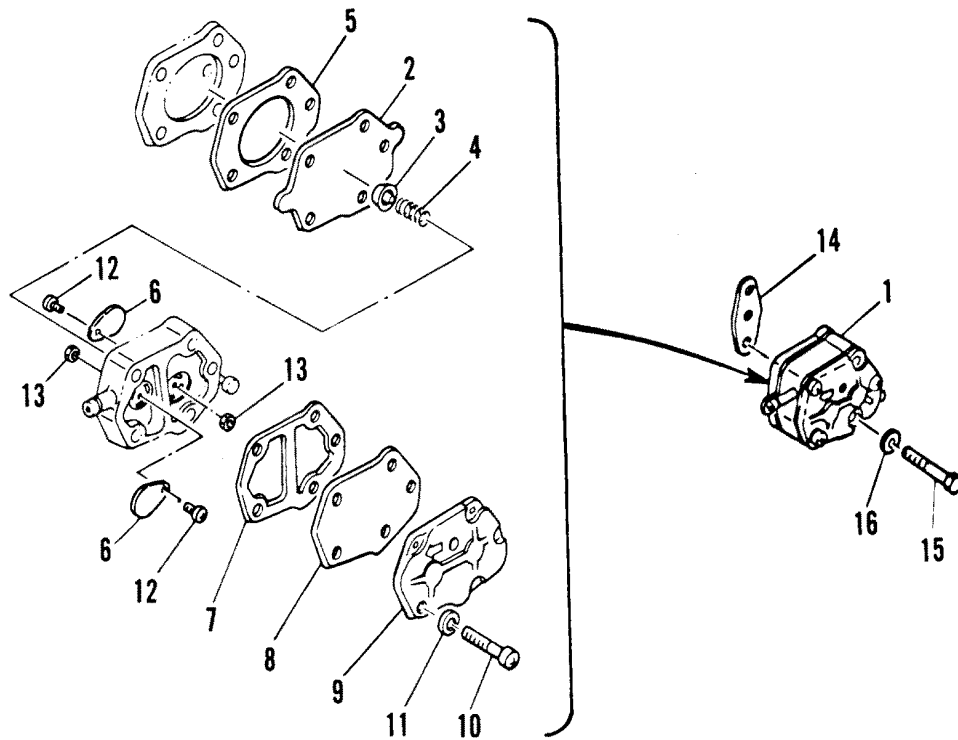
# CARBURETOR



# CARBURETOR

REF. NO.	PART NO.	SYM.	QTY.	DESCRIPTION
0-1	1383-7991M		1	CARBURETOR ASS'Y
1	94495M		1	FLOAT BOWL
2	25-83362M		1	O-RING
3	83363M		1	FLOAT
4	83364M		1	INLET NEEDLE
5	17-92639M		1	PIN,INLET NEEDLE
6	17-81278M		1	PIN
7	54-82781M		1	CLIP
8	94496M		1	NOZZLE,MAIN
9	94779M		1	JET MAIN(#150)
10	94497M		1	JET,SLOW(#80)
11	22-83369M		1	PLUG
12	83370M		1	COLLAR
13	10-83371M		1	SCREW WITH WASHER
14	12-83372M		1	WASHER
15	11-82378M		1	NUT
16	10-83373M		4	SCREW WITH WASHER
17	10-81293M		1	SCREW
18	25-94498M		1	O-RING
19	10-83375M		1	SCREW
20	12-92636M		1	WASHER
21	10-81292M		1	SCREW
22	24-94499M		1	SPRING
23	10-83889M		1	SCREW,IDLE MIXTURE
24	10-81277M		1	SCREW,IDLE SPEED
25	24-82080M		1	SPRING
26	94726M		1	VALVE SEAT
27	25-97070M		1	O-RING SERIAL 00004416-09999999
-	<b>94500M</b>		<b>1</b>	<b>CONTENTS OF CARBURETOR REPAIR KIT (M-94500M) REPLACEMENT PARTS</b>

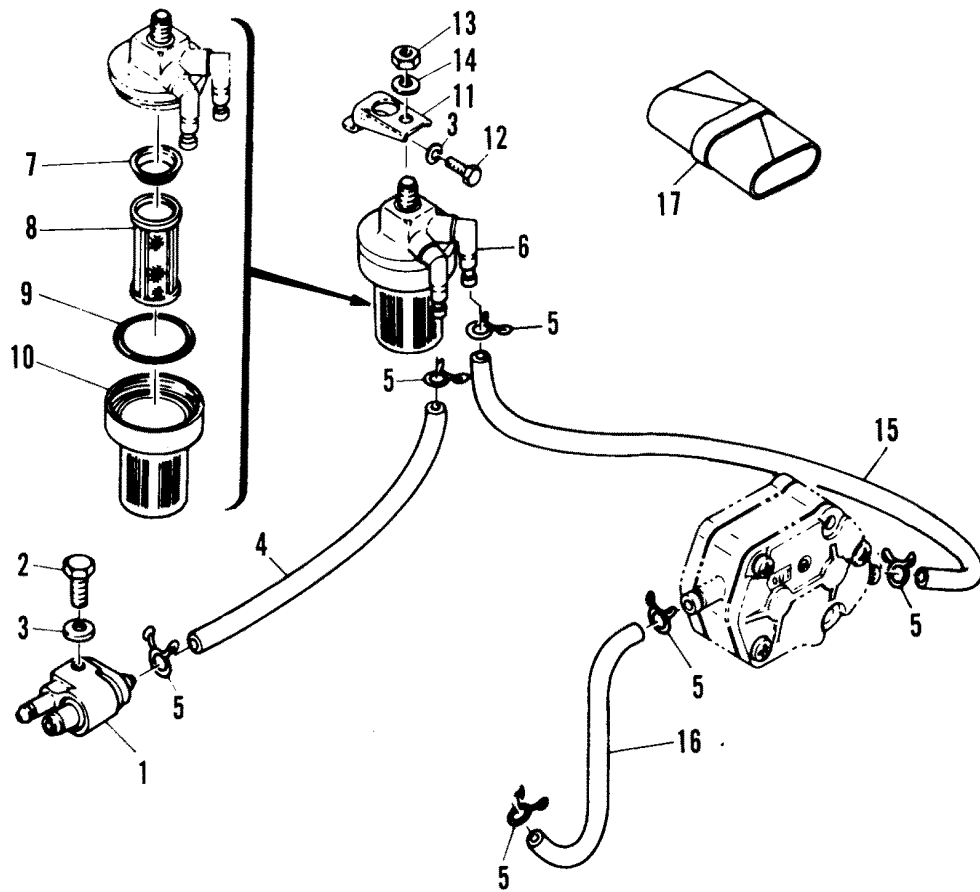
# FUEL PUMP



# FUEL PUMP

REF. NO.	PART NO.	SYM.	QTY.	DESCRIPTION
1	94799M		1	FUEL PUMP ASS'Y SERIAL 00003931-09999999
	84651M		1	FUEL PUMP ASS'Y SERIAL 00000000-00003930
2	80606M		1	DIAPHRAGM
3	80611M		1	PLATE,SPRING GUIDE
4	24-80610M		1	SPRING
5	27-80613M		1	GASKET,BODY TO BASE
6	21-94800M		2	CHECK VALVE SERIAL 00003931-09999999
	21-84650M		2	CHECK VALVE SERIAL 00000000-00003930
7	27-80614M		1	GASKET,BODY TO COVER
8	84141M		1	DIAPHRAGM
9	80607M		1	COVER
10	10-82522M		3	SCREW
11	13-82208M		3	WASHER,LOCK
12	10-94801M		2	SCREW SERIAL 00003931-09999999
13	11-82537M		2	NUT SERIAL 00003931-09999999
14	27-80757M		1	GASKET,FUEL PUMP TO CRANKCASE
15	10-82428M		2	BOLT
16	13-82199M		2	WASHER,LOCK

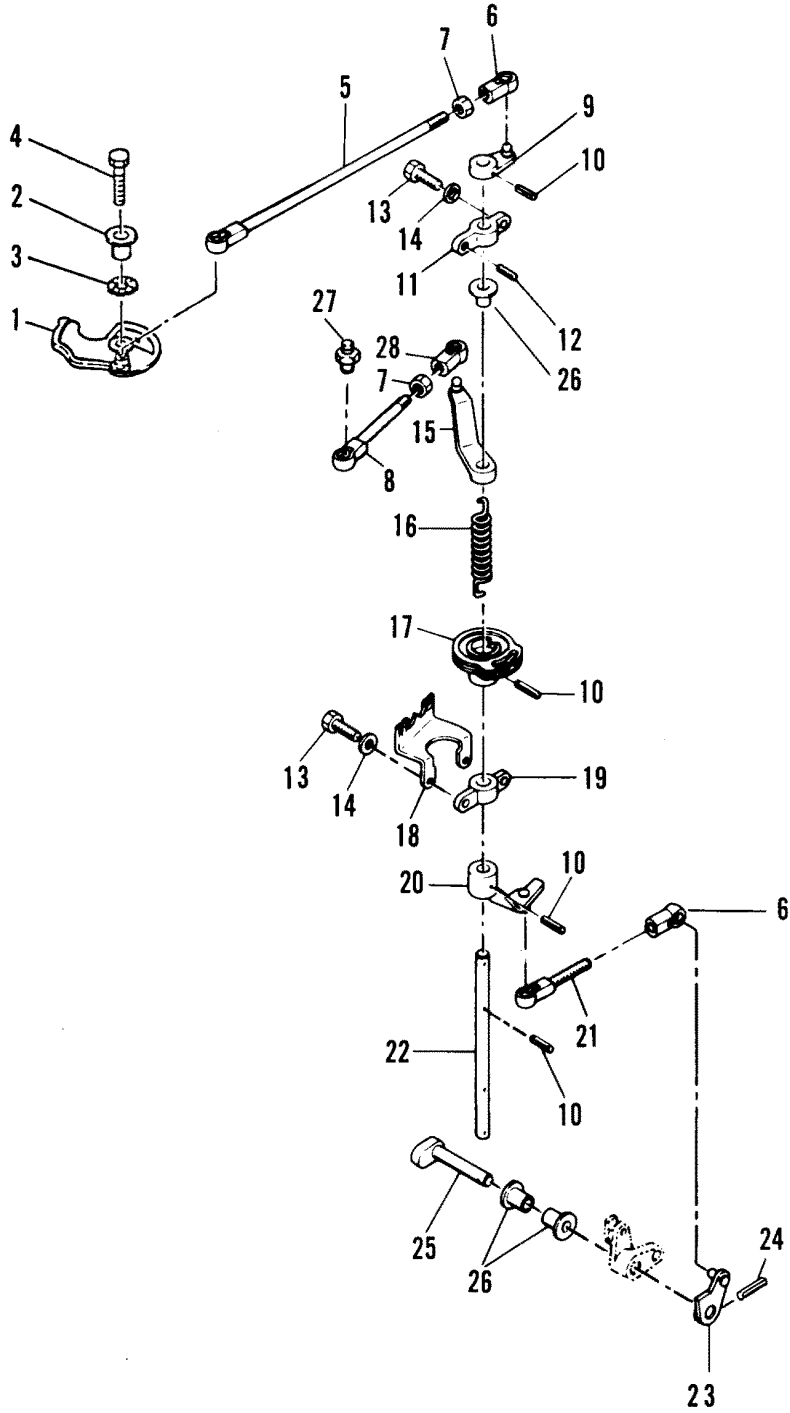
# FUEL LINES AND FILTER



## FUEL LINES AND FILTER

REF. NO.	PART NO.	SYM.	QTY.	DESCRIPTION
1	93099M		1	FUEL CONNECTOR
2	10-83539M		1	BOLT
3	13-82197M		2	WASHER, LOCK
4	32-84972M		1	HOSE
5	54-82047M		6	CLAMP
6	35-80617M		1	FILTER ASS'Y
7	27-82790M		1	GASKET
8	35-82783M		1	ELEMENT, FILTER
9	25-84957M		1	O-RING
10	82784M		1	CUP, FILTER
11	80620M		1	BRACKET, FILTER
12	10-84247M		1	BOLT
13	11-82382M		1	NUT
14	13-82200M		1	WASHER LOCK <b>SERIAL 00000000-00003930</b>
15	32-84973M		1	HOSE
16	32-94501M		1	HOSE
17	91-81669M		1	TOOL KIT ASS'Y

# THROTTLE CONTROL

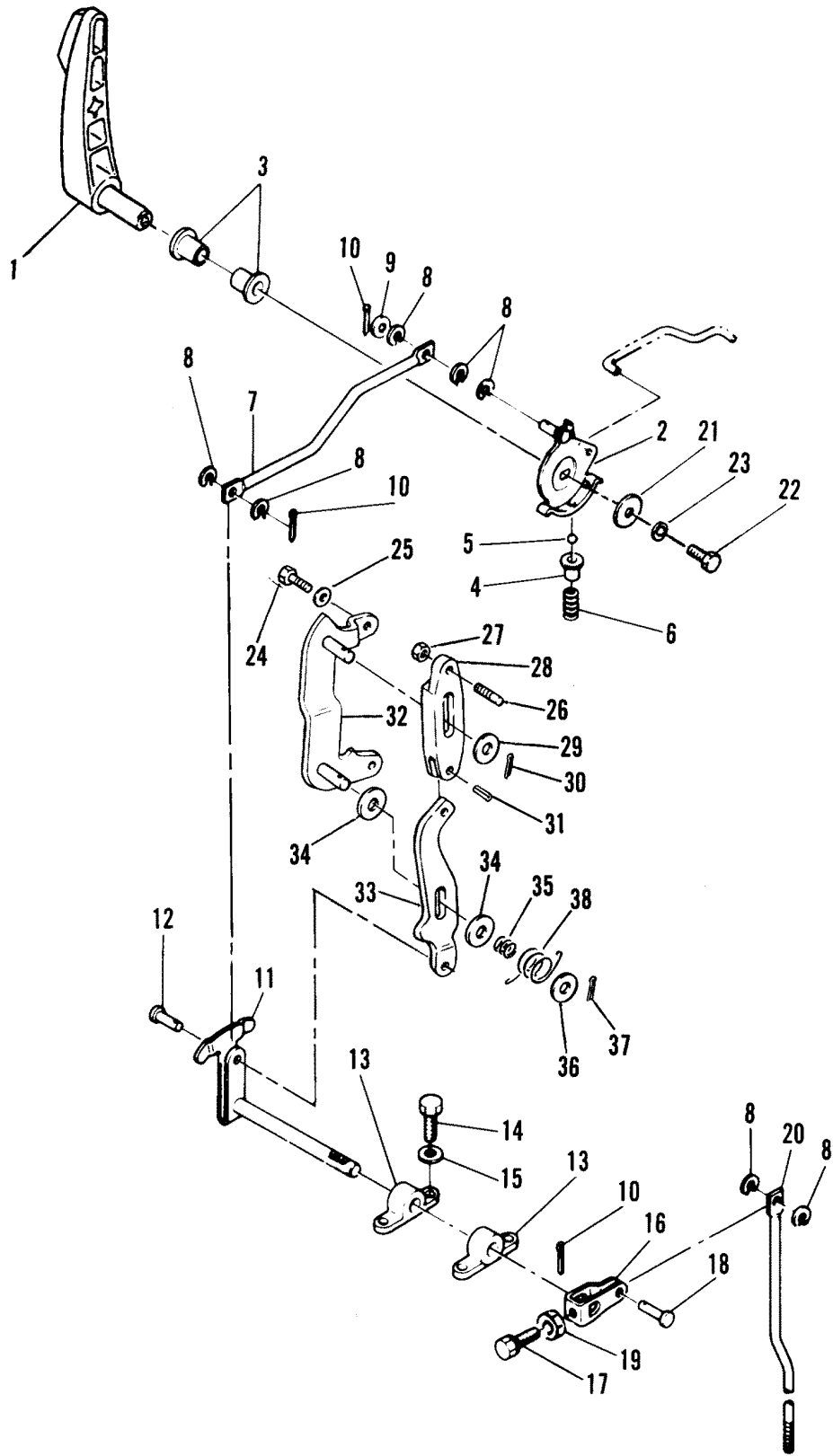




# THROTTLE CONTROL

REF. NO.	PART NO.	SYM.	QTY.	DESCRIPTION
1	97115M		1	CAM SERIAL 00004416-09999999
	94502M		1	CAM SERIAL 00000000-00004415
2	23-94503M		1	COLLAR
3	13-81868M		1	WASHER
4	10-84237M		1	BOLT
5	83544M		1	LINK,ROD
6	81225M		2	RETAINER,LINK ROD
7	11-82378M		2	NUT
8	84101M		1	ROD,MAGNETO CONTROL SERIAL 00003931-09999999
	83918M		1	ROD,MAGNETO CONTROL SERIAL 00000000-00003930
9	94504M		1	LEVER,MAGNETO CONTROL
10	17-82149M		4	PIN,ROLL
11	83547M		1	BRACKET
12	17-82154M		1	PIN,ROLL
13	10-83539M		3	BOLT
14	13-82199M		3	WASHER,LOCK
15	83548M		1	LEVER,MAGNETO CONTROL
16	24-83594M		1	SPRING
17	83919M		1	PULLEY
18	83551M		1	BRACKET
	83551M		1	BRACKET
19	83537M		1	BRACKET
20	83920M		1	LEVER,MAGNETO CONTROL
21	83921M		1	ROD
22	83555M		1	SHAFT,LINK CONNECTING
23	83526M		1	LEVER,THROTTLE CONTROL
24	17-82158M		1	PIN,ROLL
25	83527M		1	SHAFT,THROTTLE CONTROL
26	23-81946M		3	BUSHING
27	84305M		1	BALL JOINT
28	84100M		1	RETAINER,LINK ROD SERIAL 00003291-09999999
	81225M		1	RETAINER,LINK ROD SERIAL 00000000-00003290

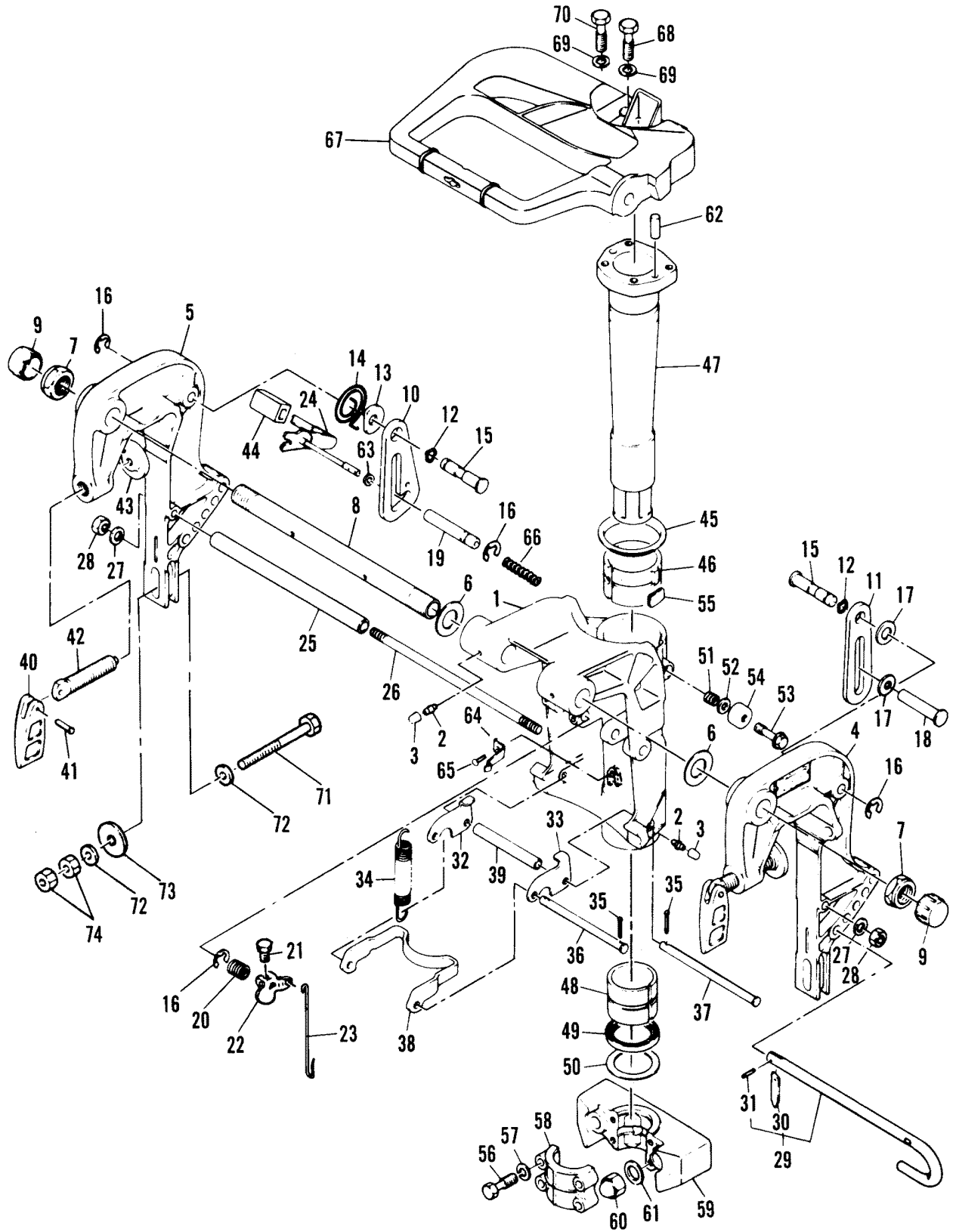
# GEAR SHIFT LINKAGE



# GEAR SHIFT LINKAGE

REF. NO.	PART NO.	SYM.	QTY.	DESCRIPTION
1	94506M		1	HANDLE,GEAR SHIFT
2	94507M		1	CAM,PLATE HANDLE
3	23-81952M		2	BUSHING
4	23-83531M		1	BUSHING
5	82348M		1	BALL,STEEL
6	24-82084M		1	SPRING,COMPRESSION
7	83532M		1	ROD
8	12-83533M		7	WASHER
9	12-82196M		1	WASHER
10	18-82125M		3	PIN,COTTER
11	83534M		1	SHAFT
12	17-97116M		1	PIN,CLEVIS <b>SERIAL E0103816-09999999</b>
	17-83536M		1	PIN,CLEVIS <b>SERIAL 00000000-00004590</b>
13	83537M		2	BRACKET
14	10-83539M		4	BOLT
15	13-82199M		4	WASHER,LOCK
16	M-83538M		1	LEVER,SHIFT ROD
17	10-83539M		1	BOLT
18	17-83540M		1	PIN,CLEVIS
19	11-82380M		1	NUT
20	83542M		1	ROD,SHIFT
21	12-81794M		1	WASHER
22	10-91772M		1	BOLT
23	13-82212M		1	LOCKWASHER
24	10-84247M		2	BOLT <b>SERIAL 00004591-09999999</b>
25	13-82199M		1	WASHER <b>SERIAL 00004591-09999999</b>
26	M-91649M		1	STUD <b>SERIAL 00004591-09999999</b>
27	11-82379M		1	NUT <b>SERIAL 00004591-09999999</b>
28	97117M		1	LEVER THROTTLE <b>SERIAL 00004591-09999999</b>
29	M-94524M		1	WASHER <b>SERIAL 00004591-09999999</b>
30	18-82127M		1	PIN <b>SERIAL 00004591-09999999</b>
31	17-82154M		1	PIN( ) AND ABOVE <b>SERIAL 00004591-09999999</b>
32	97118M		1	BRACKET <b>SERIAL 00004591-09999999</b>
33	97119M		1	LEVER,SHIFT <b>SERIAL 00004591-09999999</b>
34	12-83493M		2	WASHER <b>SERIAL 00004591-09999999</b>
35	24-97121M		1	SPRING <b>SERIAL 00004591-09999999</b>
36	12-94524M		1	WASHER <b>SERIAL 00004591-09999999</b>
37	18-82172M		1	PIN <b>SERIAL 00004591-09999999</b>
38	24-97120M		1	SPRING <b>SERIAL 00004591-09999999</b>

# CLAMP AND SWIVEL BRACKET/REVERSE LOCK

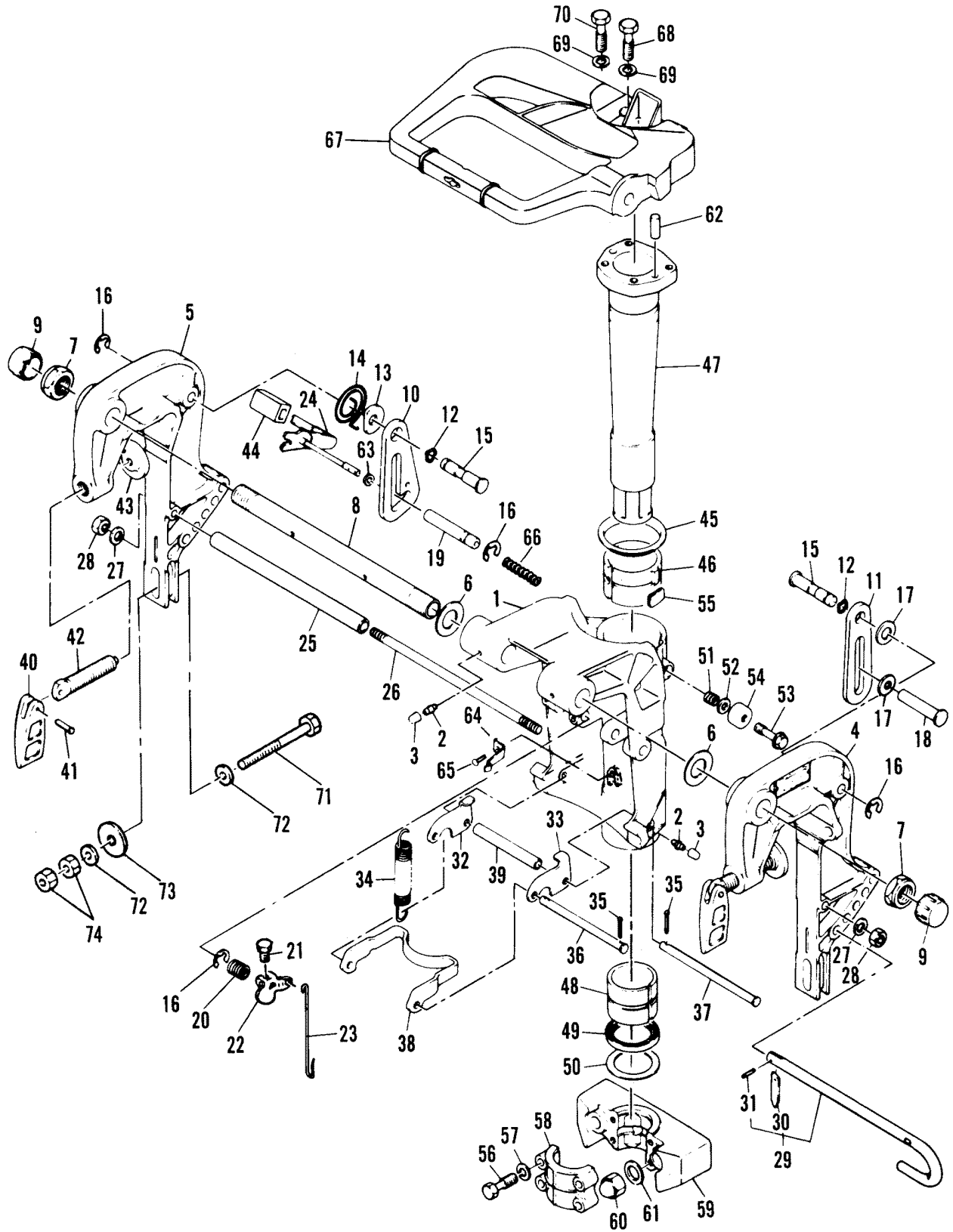


# CLAMP AND SWIVEL BRACKET/REVERSE LOCK

REF. NO.	PART NO.	SYM.	QTY.	DESCRIPTION
1	1485-6996M		1	BRACKET,SWIVEL
2	22-82369M		4	FITTING,GREASE
3	81439M		4	CAP,GREASE FITTING
4	1484-8439M		1	BRACKET,CLAMP(PORT)
5	1484-8440M		1	BRACKET,CLAMP(STARBOARD)
6	12-81836M		2	WASHER
7	11-81787M		2	NUT,NYLON
8	81387M		1	STUD,CLAMP BRACKET
9	81388M		2	CAP
10	84968M		1	STOP,TILT(STARBOARD) FOR 75 TILT
	94508M		1	STOP,TILT(STARBOARD) FOR 70 TILT OPT
11	84969M		1	STOP,TILT(PORT) FOR 75 TILT
	94510M		1	STOP,TILT(PORT) FOR 70 TILT OPT
12	13-83457M		2	WASHER,WAVE
13	12-83458M		1	WASHER
14	24-92616M		1	SPRING,LEVER RETURN
15	17-83460M		2	PIN
16	53-83461M		5	SNAP RING
17	12-83462M		2	WASHER
18	17-83463M		1	PIN
19	83464M		1	SHAFT
20	24-83465M		1	SPRING
21	10-82444M		1	BOLT
22	83467M		1	LEVER,TILT
23	83468M		1	ROD,LOCK
24	94511M		1	TILT LEVER ASS'Y
25	83471M		1	SPACER
26	16-83472M		1	STUD
27	13-82215M		2	WASHER,LOCK
28	11-82392M		2	NUT
29	17-83904M		1	TILT PIN ASS'Y
30	84044M		1	STOPPER TILT LOCK
31	17-82145M		1	PIN,ROLL
32	83905M		1	BRACKET,TILT LOCK
33	83906M		1	BRACKET,TILT LOCK
34	24-83476M		1	SPRING
35	18-82752M		4	PIN,COTTER
36	17-83477M		1	PIN
37	17-83478M		1	PIN
38	83479M		1	TILT LOCK
39	23-83480M		1	SPACER
40	81382M		2	HANDLE,TRANSOM CLAMP
41	17-81889M		2	PIN

CONTINUED ON NEXT PAGE ➡

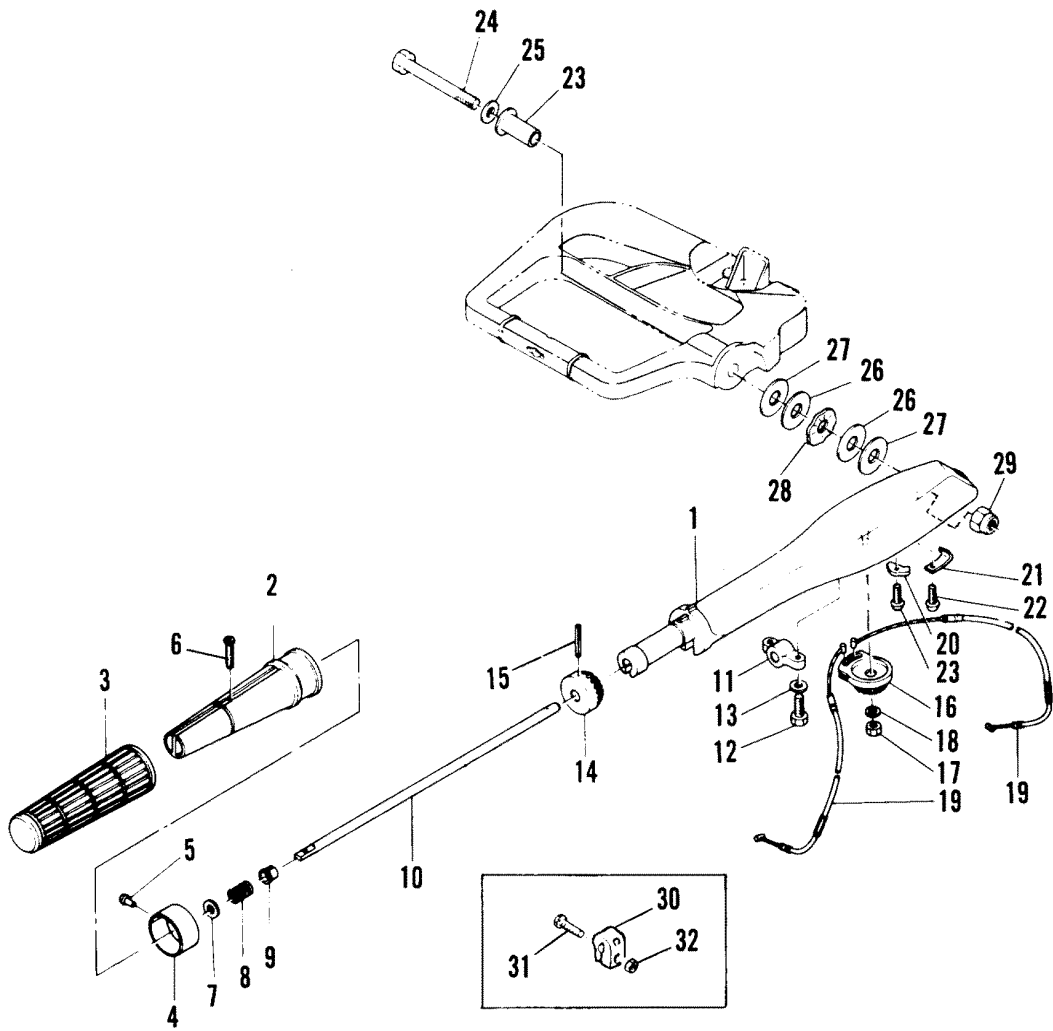
# CLAMP AND SWIVEL BRACKET/REVERSE LOCK



## CLAMP AND SWIVEL BRACKET/REVERSE LOCK

REF. NO.	PART NO.	SYM.	QTY.	DESCRIPTION
42	10-83481M		2	SCREW,TRANSOM CLAMP
43	12-80638M		2	PAD,TRANSOM CLAMP
44	81395M		1	COVER
45	12-83482M		1	WASHER
46	23-83483M		1	BUSHING
47	83907M		1	SHAFT
48	23-83458M		1	BUSHING
49	26-83486M		1	OIL SEAL
50	12-83487M		1	WASHER
51	24-83488M		1	SPRING
52	12-82217M		1	WASHER
53	10-82464M		1	BOLT
54	26-83490M		1	RUBBER,SEAL
55	M-80633M		1	PIECE,FRICITION
56	10-82468M		4	BOLT
57	13-82215M		4	WASHER
58	83491M		1	HOUSING,LOWER MOUNT RUBBER
59	83492M		1	HOUSING,LOWER MOUNT RUBBER
60	11-82397M		2	NUT,CROWN
61	M-84428M		2	WASHER
62	17-82368M		2	PIN,DOWEL
63	12-83493M		1	WASHER
64	24-83494M		1	SPRING
65	17-83495M		1	RIVET
66	24-83909M		1	SPRING,COMPRESSION
67	83513M		1	BRACKET,STEERING
68	10-82465M		2	BOLT
69	13-82215M		4	WASHER,LOCK
70	10-82466M		2	BOLT
71	10-84970M		4	BOLT
72	12-82220M		8	WASHER
73	12-81812M		4	WASHER
74	11-82395M		8	NUT

# STEERING HANDLE

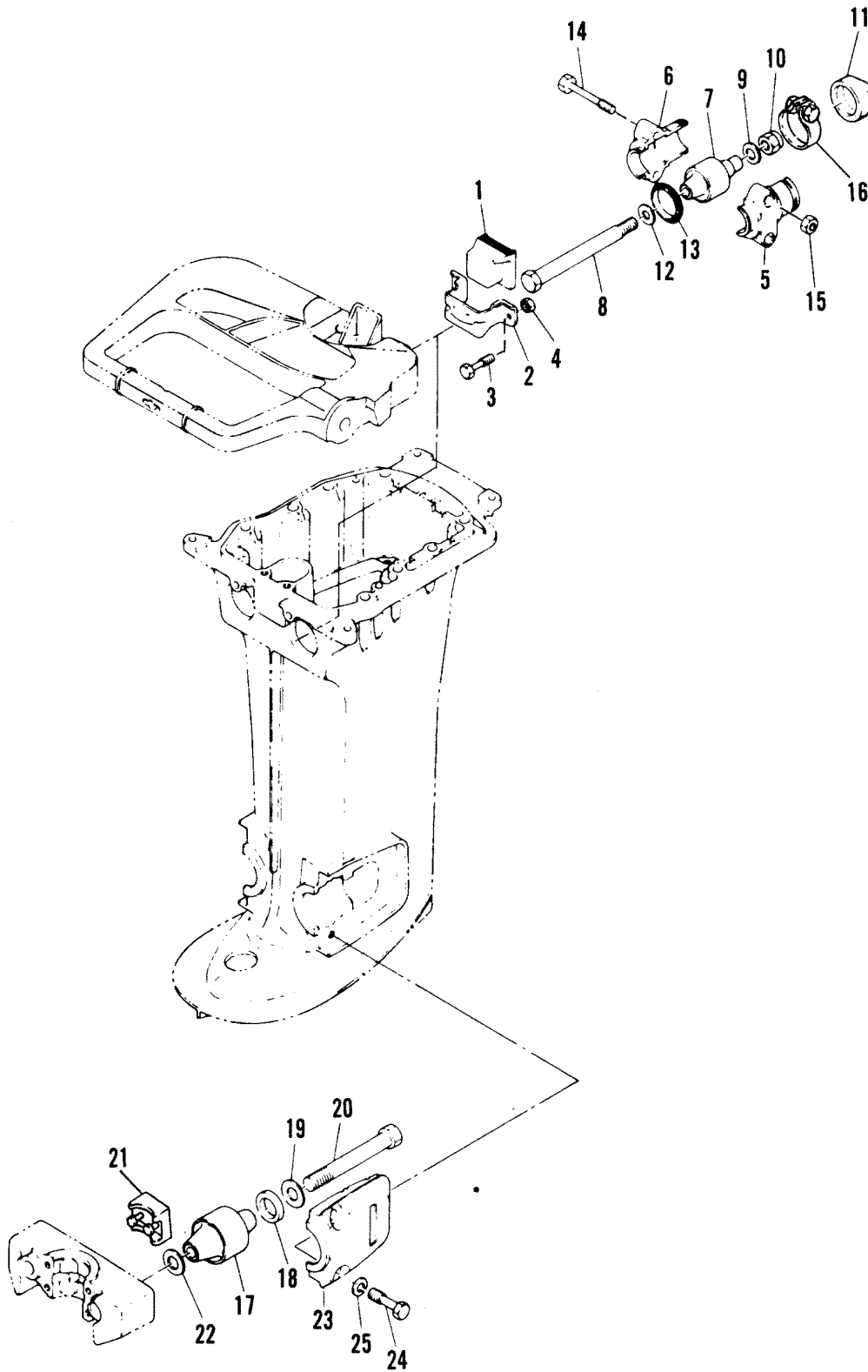




# STEERING HANDLE

REF. NO.	PART NO.	SYM.	QTY.	DESCRIPTION
0-1	93050M		1	STEERING HANDLE ASS'Y
1	84971M		1	HANDLE STEERING
2	81585M		1	GRIP,STEERING HANDLE
3	84854M		1	RUBBER,HANDLE
4	97122M		1	INDICATOR,THROTTLE <b>SERIAL 00003291-09999999</b>
	83515M		1	INDICATOR,THROTTLE <b>SERIAL 00000000-00003290</b>
5	17-81907M		1	RIVET
6	10-82483M		1	SCREW
7	12-82204M		1	WASHER
8	M-82095M		1	SPRING
9	23-81945M		1	BUSHING
10	83516M		1	SHAFT,STEERING HANDLE
11	83517M		1	BRACKET
12	10-82452M		2	BOLT
13	12-82214M		2	WASHER
14	43-80778M		1	GEAR
15	17-82151M		1	PIN ROLL
16	43-94512M		1	PINION
17	11-82389M		1	NUT
18	13-82212M		1	WASHER,LOCK
19	83520M		2	THROTTLE WIRE COMP
20	83521M		1	HOLDER,WIRE
21	83522M		1	HOLDER,WIRE
22	10-83523M		2	SCREW
23	23-81950M		1	BUSHING
24	10-94514M		1	BOLT
25	12-83524M		1	WASHER
26	12-81853M		2	WASHER
27	12-81815M		2	WASHER
28	13-81870M		1	WASHER WAVE
29	11-81786M		1	NUT,NYLON
30	82895M		1	PIECE, FRICTION <b>OPTIONAL PARTS</b>
31	10-84058M		1	BOLT <b>OPTIONAL PARTS</b>
32	11-83056M		1	NUT <b>OPTIONAL PARTS</b>

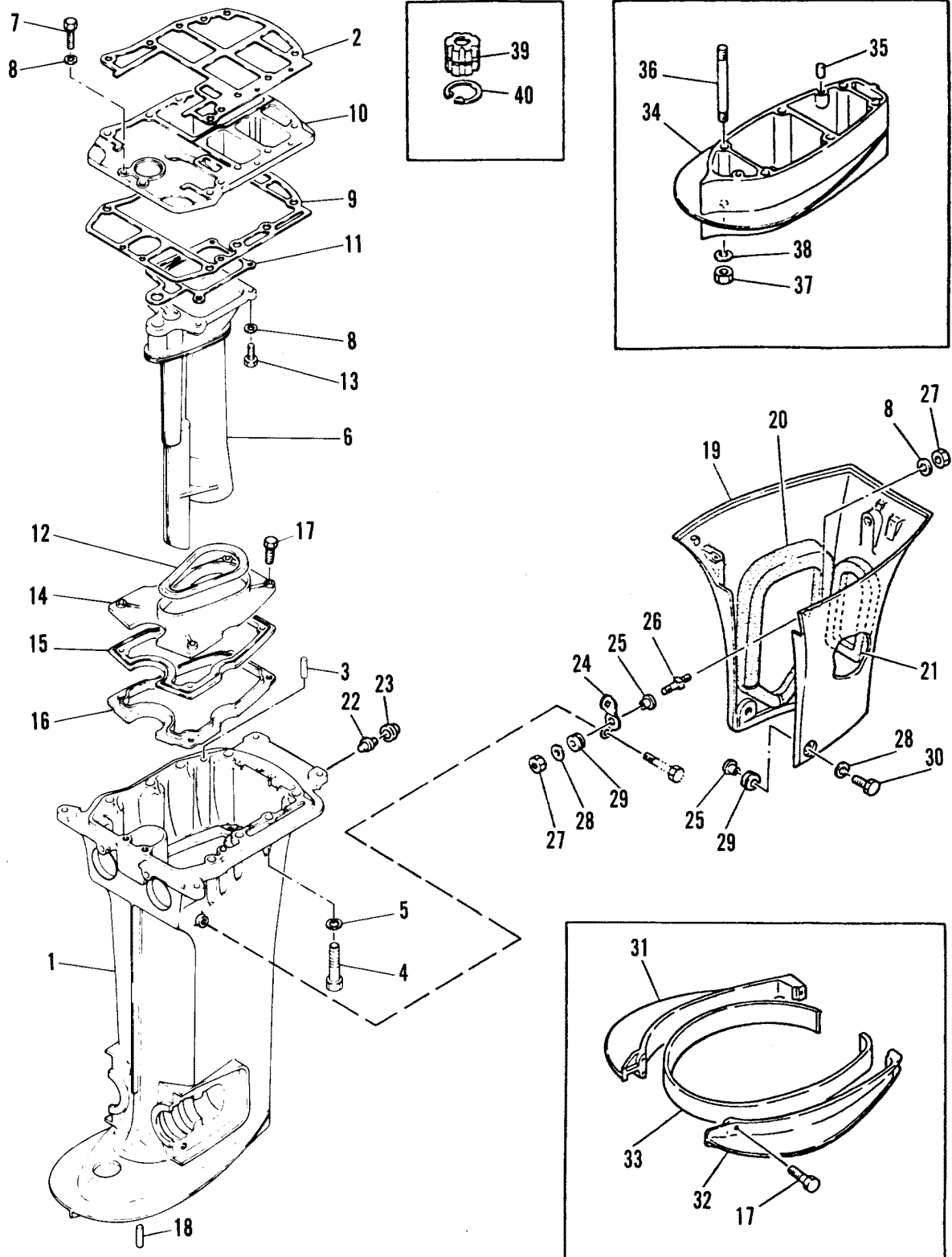
# MOUNTING SYSTEM



# MOUNTING SYSTEM

REF. NO.	PART NO.	SYM.	QTY.	DESCRIPTION
1	83496M		1	DAMPER,UPPER MOUNT RUBBER
2	83497M		1	BRACKET
3	10-82453M		2	BOLT
4	11-83611M		2	NUT
5	83498M		2	COVER,UPPER MOUNT RUBBER
6	83499M		2	COVER,UPPER MOUNT RUBBER
7	83910M		2	MOUNT RUBBER,UPPER SIDE
8	10-83501M		2	BOLT
9	12-83911M		2	WASHER
10	11-84295M		2	NUT,NYLON
11	83912M		2	CAP
12	12-83504M		2	WASHER
13	25-83505M		2	SEAL,RUBBER
14	10-83506M		4	BOLT
15	11-82400M		4	NUT
16	54-83507M		2	HOSE CLAMP ASS'Y
17	83914M		2	MOUNT RUBBER,LOWER SIDE
18	12-81860M		2	WASHER
19	12-83915M		2	WASHER
20	10-83510M		2	BOLT
21	83511M		1	DAMPER,LOWER MOUNT RUBBER
22	12-84429M		2	WASHER
23	83512M		2	COVER,LOWER MOUNT
24	10-82465M		4	BOLT
25	13-82215M		4	WASHER,LOCK

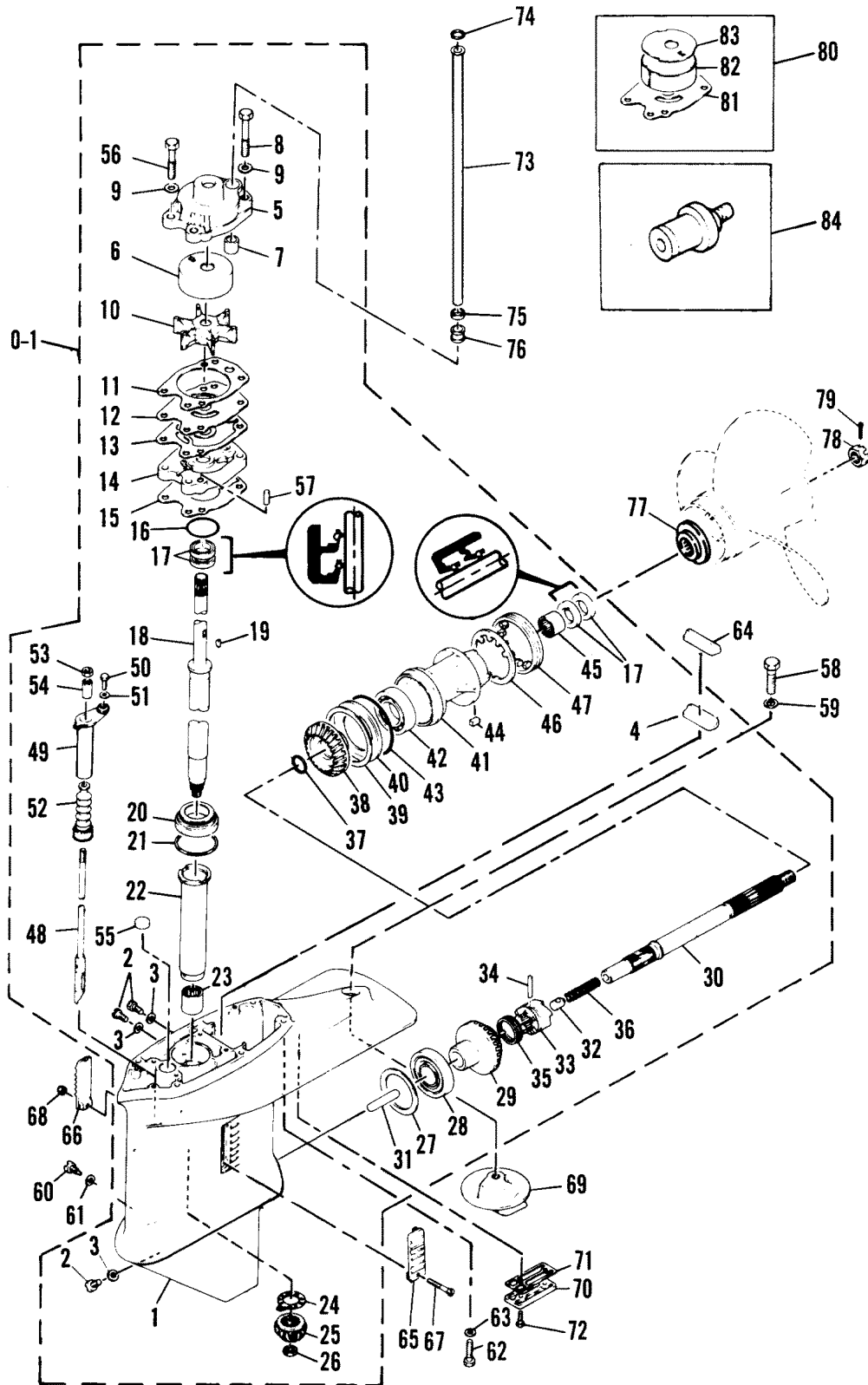
# DRIVESHAFT HOUSING



# DRIVESHAFT HOUSING

REF. NO.	PART NO.	SYM.	QTY.	DESCRIPTION
1	1587-7992M		1	DRIVESHAFT HOUSING (M AND E)
	1587-7992M		1	DRIVESHAFT HOUSING (ML,EL AND SUL)
2	27-83378M		1	GASKET,DRIVESHAFT HOUSING
3	17-83379M		2	PIN,DOWEL
4	10-82467M		8	BOLT
5	13-82215M		8	WASHER
6	94515M		1	EXHAUST TUBE
7	10-82453M		2	BOLT
8	13-82212M		9	WASHER,LOCK
9	27-83381M		1	GASKET,UPPER HOUSING
10	94516M		1	PLATE
11	27-83383M		1	GASKET,EXHAUST MANIFOLD
12	83384M		1	SEAL
13	10-84058M		4	BOLT
14	83890M		1	SEAL SUPPORT BRACKET
15	83386M		1	SEAL
16	83387M		1	PLATE
17	10-82476M		7	BOLT
18	17-82364M		2	PIN,DOWEL
19	94517M		1	APRON
20	25-94518M		2	DAMPER
21	94519M		1	SEAL
22	94520M		1	STOP
23	83042M		1	DAMPER
24	94521M		2	STAY
25	23-94522M		4	COLLAR
26	10-94523M		2	BOLT
27	11-82389M		4	NUT
28	12-94524M		4	WASHER
29	25-94525M		4	GROMMET
30	10-94526M		2	BOLT
31	93047M		1	PLATE,STARBOARD
32	93046M		1	PLATE,PORT
33	26-93048M		1	SEAL
34	94527M		1	EXTENSION(SUL) <b>OPTIONAL PARTS</b>
35	17-82364M		4	PIN,DOWEL(SUL) <b>OPTIONAL PARTS</b>
36	16-94528M		6	STUD(SUL) <b>OPTIONAL PARTS</b>
37	11-82392M		6	NUT(SUL) <b>OPTIONAL PARTS</b>
38	13-82215M		6	WASHER,LOCK(SUL) <b>OPTIONAL PARTS</b>
39	23-94529M		1	BUSHING(SUL) <b>OPTIONAL PARTS</b>
40	53-94530M		1	SNAP RING(SUL) <b>OPTIONAL PARTS</b>

# GEARHOUSING ASS'Y

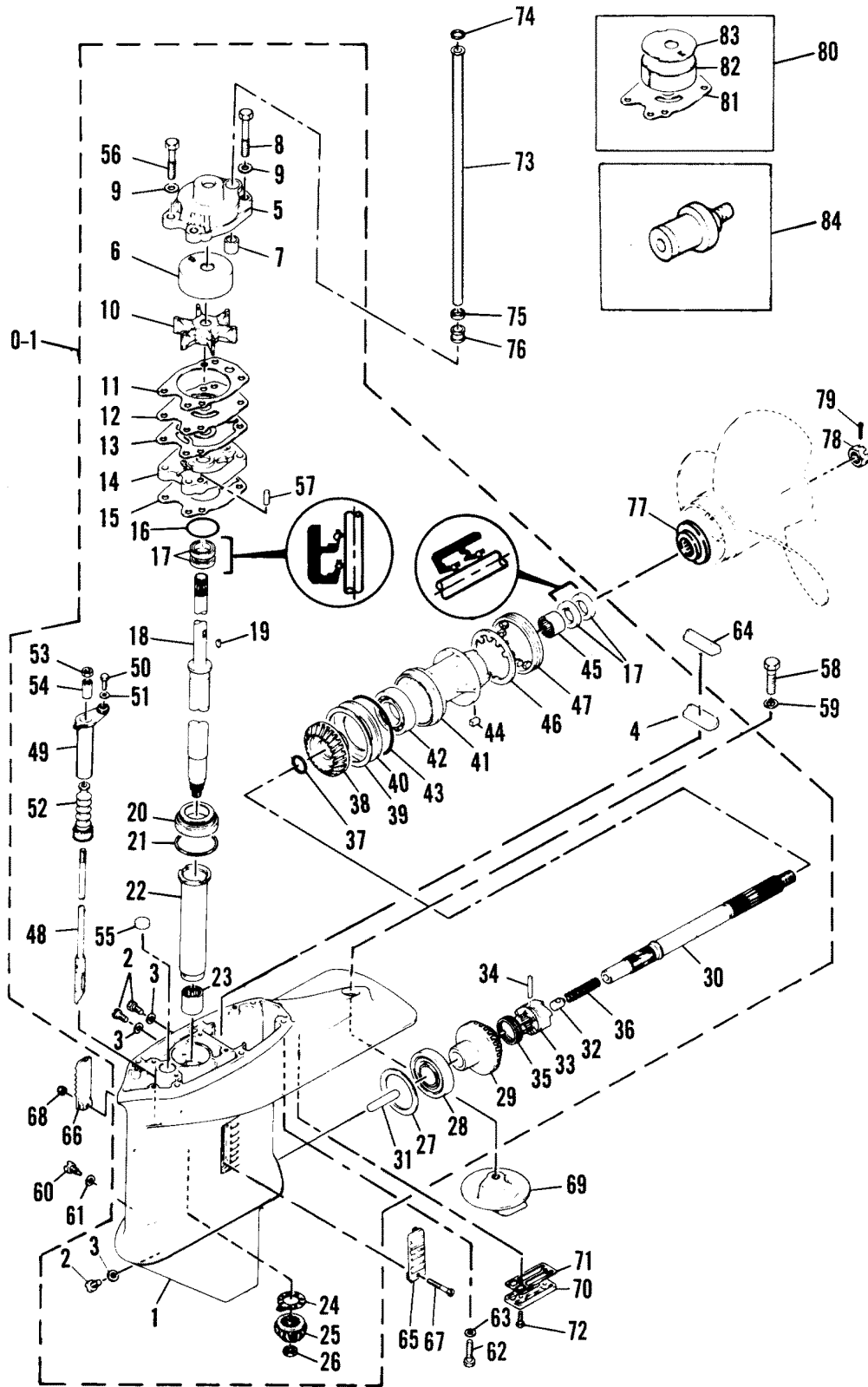


# GEARHOUSING ASS'Y

REF. NO.	PART NO.	SYM.	QTY.	DESCRIPTION
0-1	1651-7994M		1	GEARHOUSING ASS'Y (M AND E)
	1651-7995M		1	GEARHOUSING ASS'Y (ML AND EL)
1	1651-7121M		1	GEARHOUSING
2	22-81924M		3	PLUG
3	27-81987M		3	GASKET
4	81449M		1	GUIDE,SEAL
5	46-83396M		1	COVER,WATER PUMP
6	83403M		1	INSERT
7	26-81426M		1	RUBBER,WATER SEAL
8	10-84057M		2	BOLT
9	12-82217M		4	WASHER
10	47-83397M		1	IMPELLER
11	27-83398M		1	GASKET,WATER PUMP
12	83400M		1	FACE PLATE
13	27-83399M		1	GASKET,WATER PUMP
14	46-83864M		1	BASE,WATER PUMP
15	27-83865M		1	GASKET,WATER PUMP
16	25-82275M		1	O-RING
17	26-83406M		4	OIL SEAL
18	45-83866M		1	DRIVE SHAFT (M AND E)
	45-83867M		1	DRIVE SHAFT (ML AND EL)
	45-83895M		1	DRIVE SHAFT (SUL)(OPT)
19	28-83444M		1	KEY,WATER PUMP
20	31-82319M		1	BEARING,TAPERED ROLLER
21	15-81467M		AR	SHIM,PINION GEAR ADJUST (0.05MM)
	15-81468M		AR	SHIM,PINION GEAR ADJUST (0.08MM)
	15-81469M		AR	SHIM,PINION GEAR ADJUST(0.12MM)
	15-81470M		AR	SHIM PINION GEAR ADJUST (0.30MM)
	15-81471M		AR	SHIM PINION GEAR ADJUST (0.50MM)
28	31-82320M		1	BEARING,TAPERED ROLLER
29	43-83877M		1	GEAR,FORWARD
30	44-94531M		1	SHAFT,PROPELLER
31	8349M		1	CAM FOLLOWER
32	81475M		1	SLIDE,SHIFT
33	52-81473M		1	CLUTCH,SLIDING
34	17-81903M		1	PIN,CROSS
35	81474M		1	RING,CROSS PIN
36	24-83429M		1	SPRING,COMPRESSION
37	12-81837M		1	WASHER
38	43-83879M		1	GEAR,REVERSE
39	15-81462M		AR	SHIM,REVERSE FEAR ADJUST (0.05MM)
	15-81463M		AR	SHIM,REVERSE GEAR ADJUST(0.08MM)
	15-81464M		AR	SHIM,REVERSE GEAR ADJUST (0.12MM)

CONTINUED ON NEXT PAGE ➡

# GEARHOUSING ASS'Y



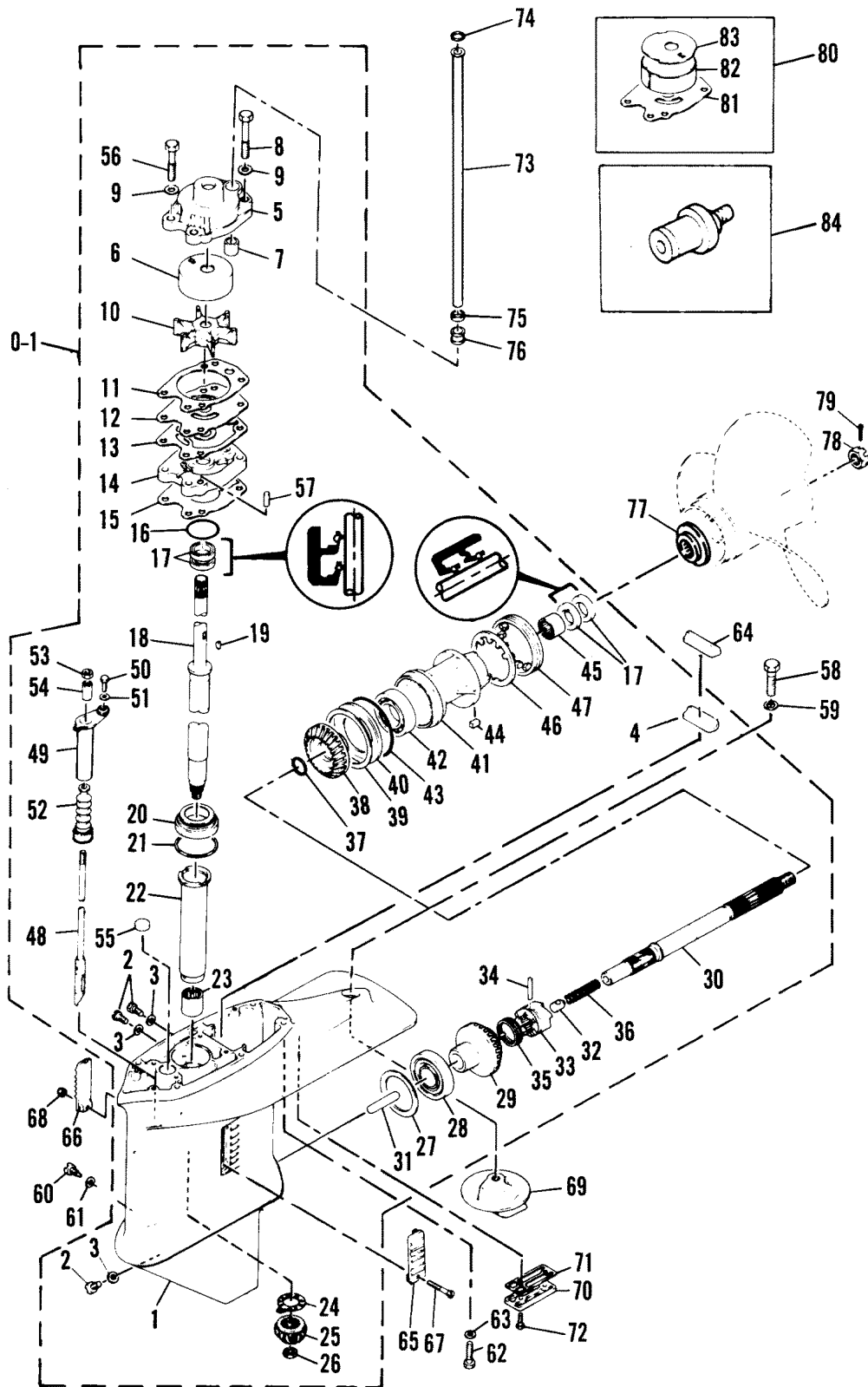


# GEARHOUSING ASS'Y

REF. NO.	PART NO.	SYM.	QTY.	DESCRIPTION
39	15-81465M		AR	SHIM,REVERSE GEAR ADJUST (0.30MM)
	15-81466M		AR	SHIM,REVERSE GEAR ADJUST (0.50MM)
40	12-81461M		1	WASHER,THRUST
41	83880M		1	BEARING CARRIER
42	30-82296M		1	BEARING,BALL
43	25-82289M		1	O-RING
44	28-81916M		1	KEY
45	31-82317M		1	BEARING,NEEDLE
46	14-81877M		1	WASHER,CLAW
47	11-81450M		1	NUT
48	83881M		1	SHIFT CAM (M AND E)
	83882M		1	SHIFT CAM (ML AND EL)
	83902M		1	SHIFT CAM (SUL)(OPT)
49	83883M		1	BUSHING,SHIFT CAM
50	10-82451M		1	BOLT
51	12-82214M		1	WASHER
52	82881M		1	BOOT,SHIFT ROD
53	11-81767M		1	NUT
54	M-80652M		1	CONNECTOR,SHIFT ROD
55	22-83857M		1	PLUG
56	10-82468M		2	BOLT
57	17-82354M		2	PIN,DOWEL
58	10-94532M		1	BOLT
59	13-82218M		1	WASHER,LOCK
60	10-83392M		1	SCREW
61	M-95610M		1	GASKET
62	10-82465M		6	BOLT
	13-82215M		6	WASHER,LOCK
64	81448M		1	RUBBER,SEAL
65	97091M		1	COVER,WATER INLET <b>SERIAL 00004416-09999999</b>
	92645M		1	COVER WATER INLET <b>SERIAL 00000000-00004415</b>
66	M-97092M		1	COVER,WATER INLET <b>SERIAL 00004416-09999999</b>
	92646M		1	COVER,WATER INLET <b>SERIAL 00000000-00004415</b>
67	10-83858M		1	SCREW
68	11-81781M		1	NUT
69	83859M		1	TRIM TAB
70	83862M		1	PLATE
71	27-83861M		1	GASKET
72	10-83870M		2	SCREW
73	32-83451M		1	TUBE,WATER (M AND E)
	32-83452M		1	TUBE,WATER(ML AND EL)
	32-83903M		1	TUBE,WATER (SUL)
74	12-81852M		1	WASHER

CONTINUED ON NEXT PAGE ➡

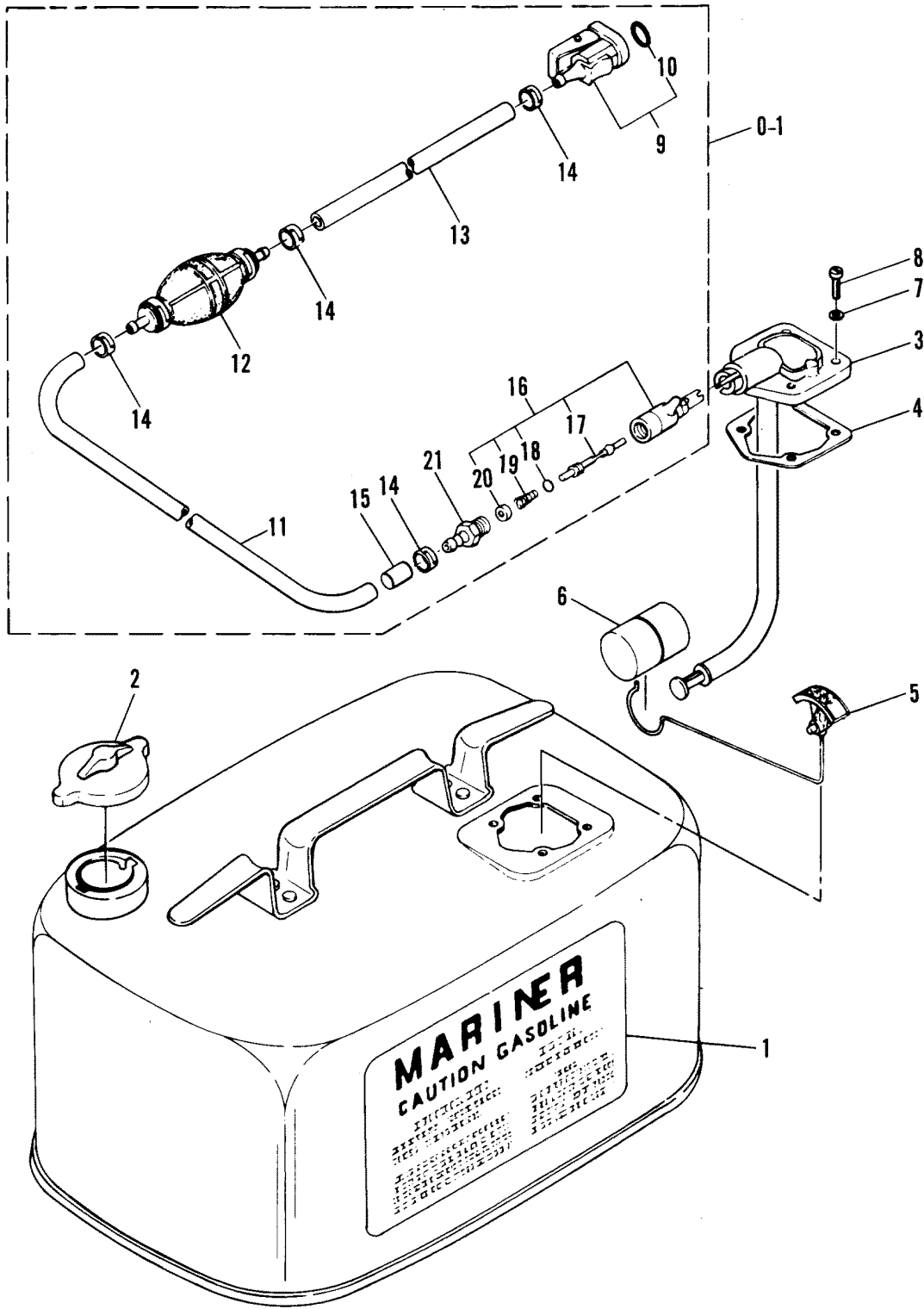
# GEARHOUSING ASS'Y



## GEARHOUSING ASS'Y

REF. NO.	PART NO.	SYM.	QTY.	DESCRIPTION
75	25-81989M		1	GASKET
76	26-81427M		1	RUBBER,WATER SEAL
77	73345A1		1	THRUST HUB
78	11-81775M		1	NUT,PROPELLER
79	18-84428M		1	PIN,COTTER
80	46-83884M		1	CHROME WATER PUMP KIT(OPT)
81	83448M		1	FACE PLATE (OPT)
82	83449M		1	INNER PLATE(OPT)
83	83450M		1	INSERT,CARTRIDGE(OPT)
84	22-80218M		1	FLUSH PLUG (OPT)
-	<b>27-94533M</b>		<b>1</b>	<b>GASKET SET, LOWER UNIT OPTIONAL PARTS</b>
-	<b>84363M</b>		<b>1</b>	<b>REPAIR KIT, WATER PUMP OPTIONAL PARTS</b>

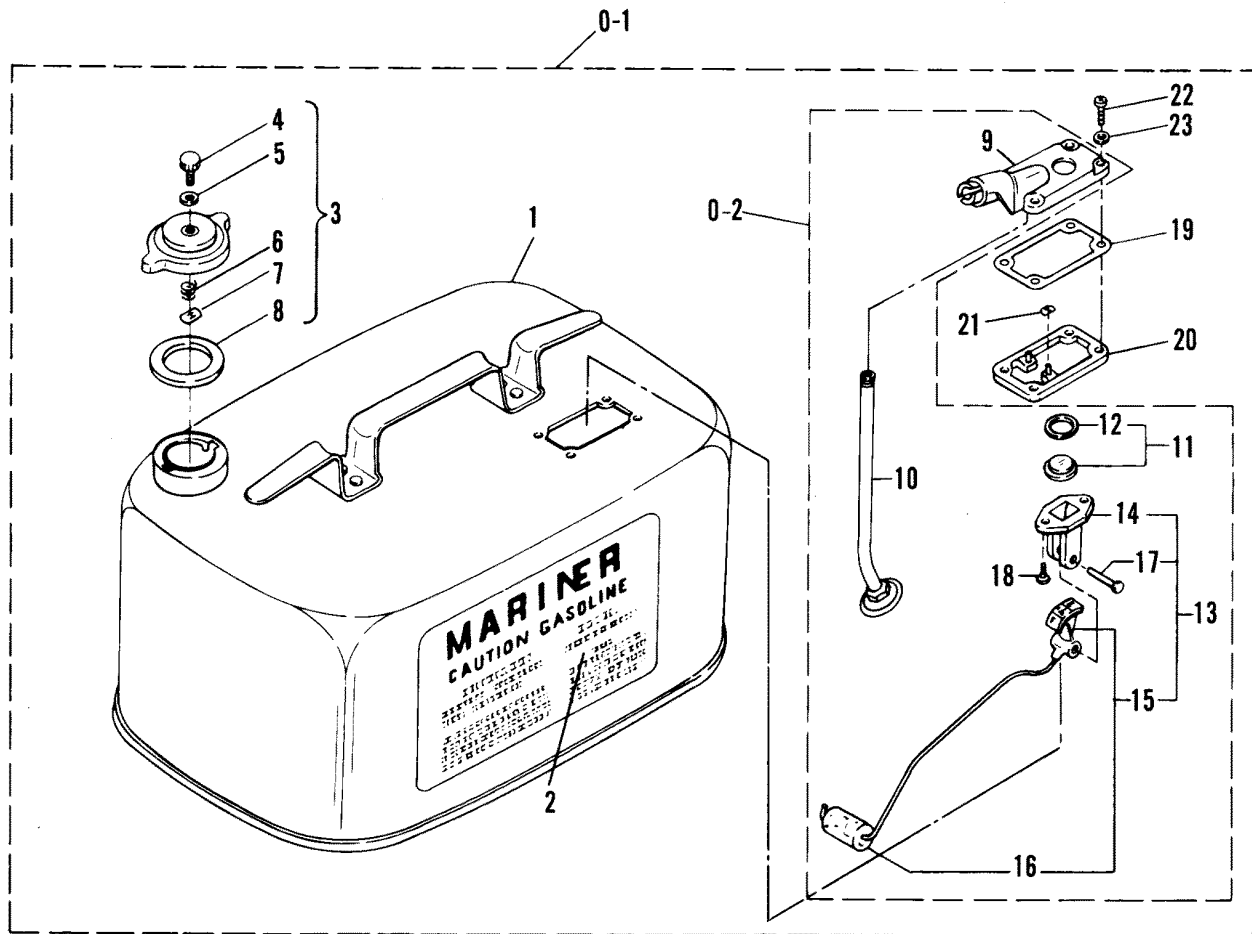
# FUEL TANK AND FUEL LINE ASSEMBLY



## FUEL TANK AND FUEL LINE ASSEMBLY

REF. NO.	PART NO.	SYM.	QTY.	DESCRIPTION
1	37-82984M		1	DECAL,SIDE
2	36-83617M		1	FUEL TANK CAP
3	83618M		1	FUEL METER
4	27-81320M		1	GASKET,HOUSING TO TANK
5	81318M		1	INDICATOR,FUEL LEVEL
6	81319M		1	FLOAT,INDICATOR
7	12-80271M		4	WASHER,HOUSING SCREW
8	10-82496M		4	SCREW
0-1	32-83628M		1	FUEL LINE ASS'Y
9	22-81042M		1	FUEL CONNECTOR,ENGINE END
10	25-82789M		1	O-RING
11	32-84955M		1	HOSE,CONNECTOR HOUSING TO BULB
12	81325M		1	BULB,PRIMER
13	32-82023M		1	HOSE,BULB TO CONNECTOR
14	54-80752M		4	CLAMP,HOSE
15	23-81327M		1	COLLAR
16	30185A1		1	BAYONET BODY ASS'Y
17	30187		1	STEM,BAYONET BODY
18	25-20415		1	O-RING,BAYONET BODY STEM
19	24-30189		1	SPRING,BAYONET BODY STEM
20	30188		1	WASHER,CAP
21	22-63187		1	FITTING,FUEL LINE

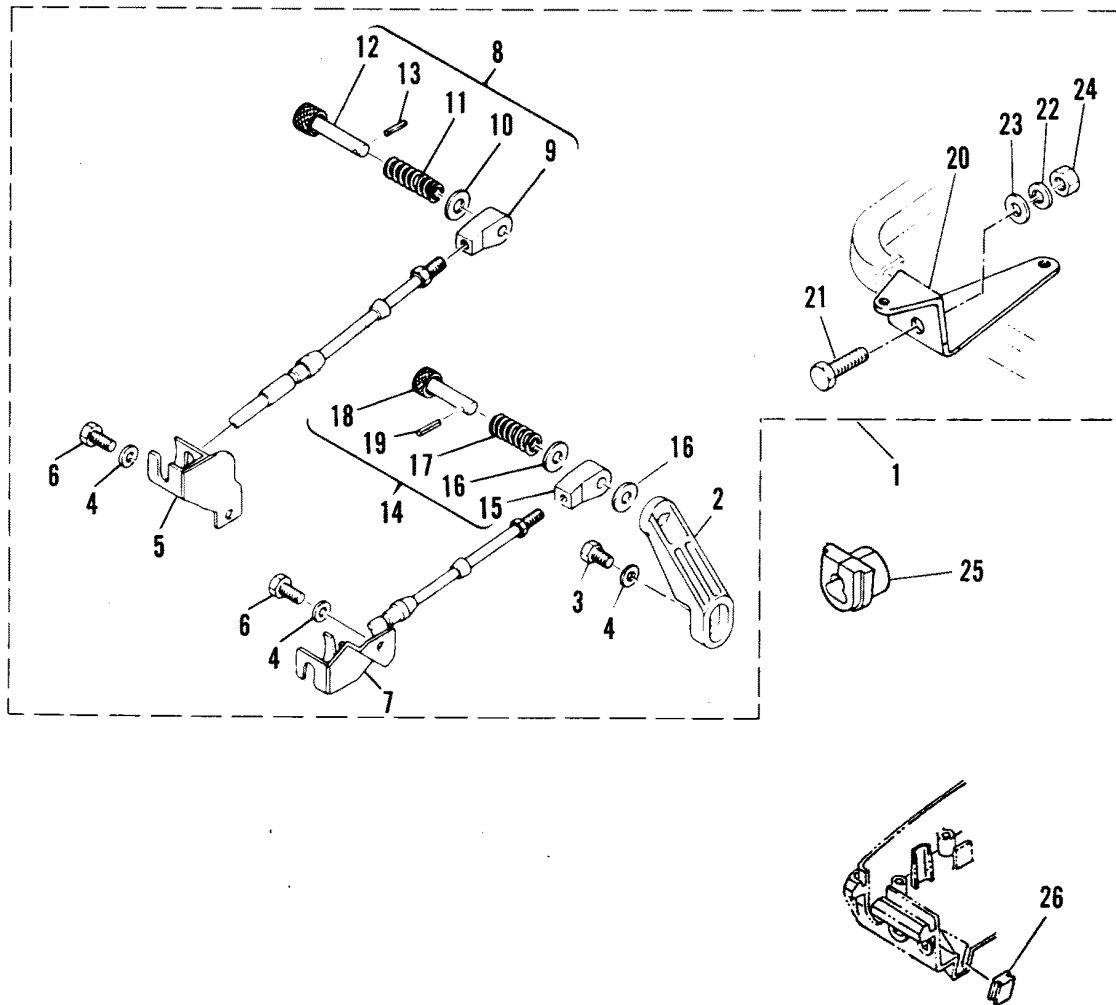
# FUEL TANK ASSEMBLY



# FUEL TANK ASSEMBLY

REF. NO.	PART NO.	SYM.	QTY.	DESCRIPTION
0-1	1225-1529A21		1	FUEL TANK ASS'Y
1	1225-1529		1	FUEL TANK
2	37-75881		1	DECAL,FUEL TANK
3	36-25392A2		1	FILLER CAP ASS'Y
4	10-25575		1	SCREW,VENT FILLER CAP
5	12-49221		1	WASHER,VENT SCREW
6	24-22227		1	SPRING,TENSION-VENT SCREW
7	11-28587		1	NUT,SPEED-SPRING RETAINER
8	27-25568		1	GASKET,FILLER CAP TO FUEL TANK
0-2	64841A1		1	COVER ASS'Y COMPLETE
9	64841A3		1	COVER ASS'Y FUEL TANK
10	32-33909A3		1	TUBE ASS'Y
11	54920A1		1	LENS ASS'Y FUEL GAUGE
12	27-54921		1	GASKET,FUEL GAUGE LENS
13	28897A2		1	FUEL FAUFE ASS'Y COMPLETE
14	20430		1	RETAINER,FUEL GAUGE
15	28897A1		1	INDICATOR AND FLOAT ASS'Y
16	20427		1	FLOAT,FUEL GAUGE
17	17-20426		1	RIVET,INDICATOR TO RETAINER
18	10-62568		2	SCREW,RETAINER TO FUEL TANK COVER
19	27-28862		1	GASKET,COVER ASS'Y TO FRAME
20	28860		1	FRAME,RETAINING FUEL TANK COVER
21	53-28903		2	FASTENER,RETAINING FRAME TO FUEL TANK
22	10-20411		4	SCREW,FUEL TANK COVER TO FUEL TANK
23	12-74711		4	WASHER,FUEL TANK COVER FASTENING SCRWE

# REMOTE CONTROL ATTACHING KIT

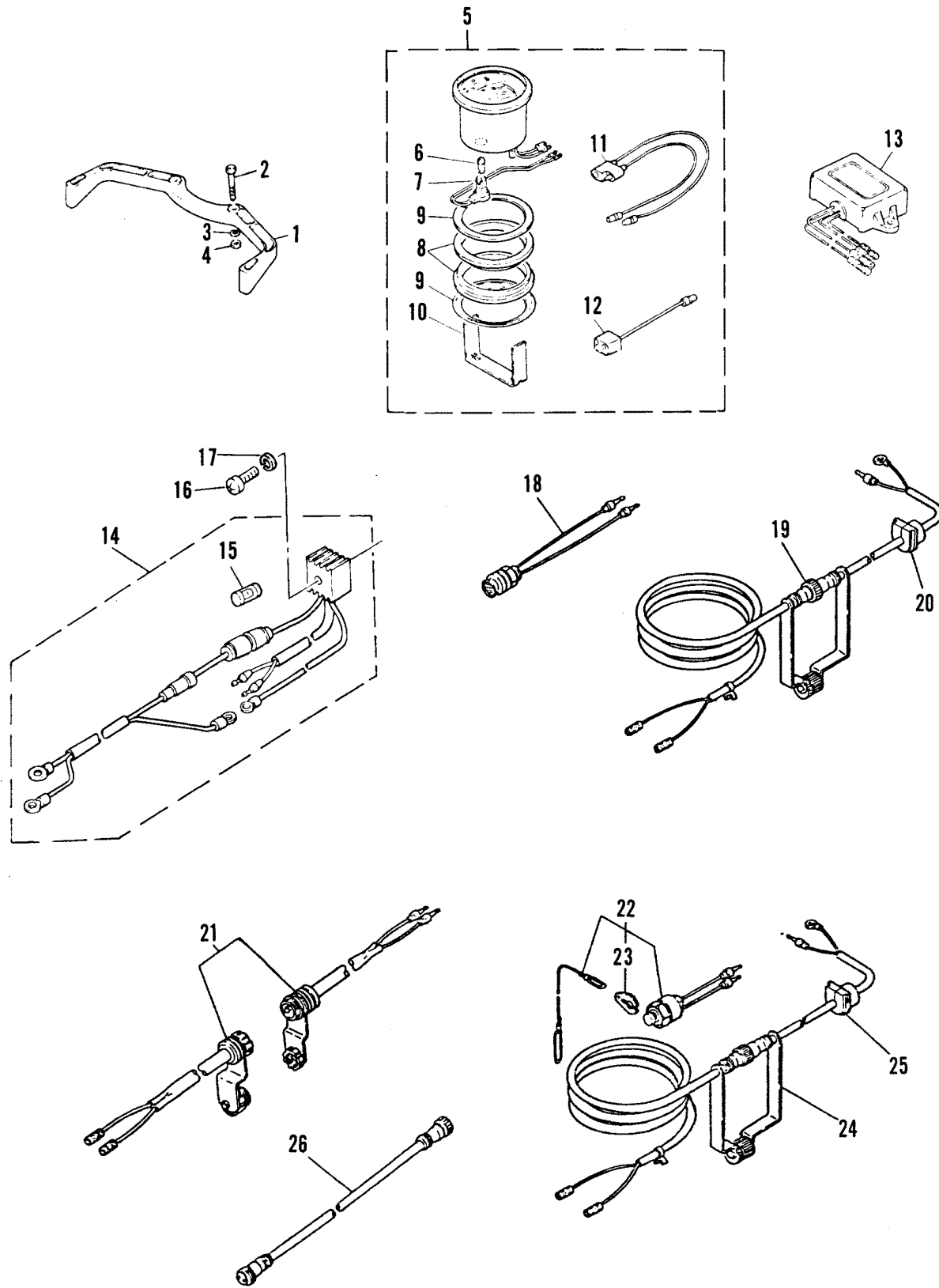




## REMOTE CONTROL ATTACHING KIT

REF. NO.	PART NO.	SYM.	QTY.	DESCRIPTION
1	83635M		1	REMOTE CONTROL ATTACHMENT KIT
2	83716M		1	THROTTLE LEVER
3	10-91772M		1	BOLT
4	13-82212M		3	WASHER,LOCK
5	83718M		1	BRACKET,REMOTE CONTROL
6	10-91725M		2	BOLT
7	83932M		1	BRACKET,REMOTE CONTROL
8	83719M		1	SHIFT CABLE END ASS'Y
9	83720M		1	CABLE END
10	12-82216M		1	WASHER
11	24-83721M		1	SPRING
12	17-83722M		1	HOOK,CABLE
13	17-82146M		1	PIN,ROLL
14	83933M		1	THROTTLE CABLE END ASS'Y
15	83934M		1	CABLE END
16	12-82216M		2	WASHER
17	24-83725M		1	SPRING
18	17-83726M		1	HOOK,CABLE
19	17-82146M		1	PIN,ROLL
20	83698M		1	BRACKET,MECHANICAL STEERING
21	10-82474M		1	BOLT
22	13-82218M		1	WASHER,LOCK
23	12-82220M		1	WASHER
24	11-82395M		1	NUT
25	25-94476M		1	GROMMET
26	25-83728M		1	GROMMET

# OPTIONAL PARTS



# OPTIONAL PARTS

REF. NO.	PART NO.	SYM.	QTY.	DESCRIPTION
1	93057M		1	HANDLE,CARRYING
2	10-83327M		2	BOLT
3	12-82204M		2	WASHER
4	11-82384M		2	NUT
5	79-84311M		1	TACHOMETER KIT
6	88-80007M		1	BULB
7	84348M		1	SOCKET,BULB
8	84349M		2	DAMPER
9	12-84350M		2	WASHER
10	84351M		1	PLATE
11	84-84352M		1	EXTENSION,LEAD
12	84-84353M		2	CONNECTOR
13	84125M		1	VOLTAGE REGULATOR ASS'Y
14	84329M		1	RECTIFIER ASS'Y
15	88-81522M		1	FUSE
16	10-82492M		1	SCREW
17	13-82193M		1	WASHER <b>SERIAL 00000000-00004415</b>
18	87-84966M		1	SWITCH ASS'Y STOP
19	93053M		1	EXTENSION,STOP SWITCH
20	25-94536M		1	GROMMET
21	84-84124M		1	EXTENSION
22	87-84963M		1	SWITCH ASS'Y,KILL
23	81531M		1	STOPPER
24	93053M		1	EXTENSION,KILL SWITCH
25	25-94536M		1	GROMMET <b>SERIAL 00004416-09999999</b>
	25-83608M		1	GROMMET <b>SERIAL 00000000-00004415</b>
26	84959M		1	EXTENSION <b>SERIAL 00004416-09999999</b>

# PARTS INDEX

Part Number	Description	Pg.	Ref. No.	Part Number	Description	Pg.	Ref. No.
20427	FLOAT,FUEL GAUGE	53	16	82895M	PIECE, FRICTION	39	30
20430	RETAINER,FUEL GAUGE	53	14	83042M	DAMPER	43	23
28860	FRAME,RETAINING FUEL TANK COVER	53	20	83137M	HOOK	3	5
28897A1	INDICATOR AND FLOAT ASS'Y	53	15	83212M	BRACKET	3	3
28897A2	FUEL FAUFE ASS'Y COMPLETE	53	13	83330M	ANODE	17	18
30185A1	BAYONET BODY ASS'Y	51	16	83331M	BRACKET,ENGINE	17	20
30187	STEM,BAYONET BODY	51	17	83335M	COVER,THERMOSTAT	17	32
30188	WASHER,CAP	51	20	83337M	INNER COVER,EXHAUST	17	36
54920A1	LENS ASS'Y FUEL GAUGE	53	11	83354M	MANIFOLD,INTAKE	23	19
64841A1	COVER ASS'Y COMPLETE	53	0-2	83358M	ROD,CHOKE LINK	23	26
64841A3	COVER ASS'Y FUEL TANK	53	9	83363M	FLOAT	25	3
73345A1	THRUST HUB	49	77	83364M	INLET NEEDLE	25	4
79629A1	STARTER ROPE	7	19	83370M	COLLAR	25	12
80063M	HANDLE, STARTER	7	8	83384M	SEAL	43	12
80601M	SEAL, RUBBER	3	2	83386M	SEAL	43	15
80606M	DIAPHRAGM	27	2	83387M	PLATE	43	16
80607M	COVER	27	9	83394M	ANODE	19	47
80611M	PLATE,SPRING GUIDE	27	3	83400M	FACE PLATE	45	12
80620M	BRACKET,FILTER	29	11	83403M	INSERT	45	6
80935M	SPARK PLUG CAP,NOISE SUPPRESSOR	11	53	83448M	FACE PLATE (OPT)	49	81
81098M	THERMOSTAT	17	31	83449M	INNER PLATE(OPT)	49	82
81106M	PLUNGER,STARTER STOP	7	38	83450M	INSERT,CARTRIDGE(OPT)	49	83
81145M	LEVER, CLAMP	3	23	83464M	SHAFT	35	19
81191M	RETAINER,CHOKE LEVER	23	27	83467M	LEVER,TILT	35	22
81225M	RETAINER,LINK ROD	31	28	83468M	ROD,LOCK	35	23
81225M	RETAINER,LINK ROD	31	6	83471M	SPACER	35	25
81267M	VALVE,PRESSURE CONTROL	17	43	83479M	TILT LOCK	35	38
81318M	INDICATOR,FUEL LEVEL	51	5	83491M	HOUSING,LOWER MOUNT RUBBER	37	58
81319M	FLOAT,INDICATOR	51	6	83492M	HOUSING,LOWER MOUNT RUBBER	37	59
81325M	BULB,PRIMER	51	12	83496M	DAMPER,UPPER MOUNT RUBBER	41	1
81382M	HANDLE,TRANSOM CLAMP	35	40	83497M	BRACKET	41	2
81387M	STUD,CLAMP BRACKET	35	8	83498M	COVER,UPPER MOUNT RUBBER	41	5
81388M	CAP	35	9	83499M	COVER,UPPER MOUNT RUBBER	41	6
81395M	COVER	37	44	8349M	CAM FOLLOWER	45	31
81415M	CAP	9	31	83511M	DAMPER,LOWER MOUNT RUBBER	41	21
81439M	CAP,GREASE FITTING	35	3	83512M	COVER,LOWER MOUNT	41	23
81448M	RUBBER,SEAL	47	64	83513M	BRACKET,STEERING	37	67
81449M	GUIDE,SEAL	45	4	83515M	INDICATOR,THROTTLE	39	4
81474M	RING,CROSS PIN	45	35	83516M	SHAFT,STEERING HANDLE	39	10
81475M	SLIDE,SHIFT	45	32	83517M	BRACKET	39	11
81493M	STATOR	15	4	83520M	THROTTLE WIRE COMP	39	19
81499M	REAR COVER ASS'Y	15	9	83521M	HOLDER,WIRE	39	20
81504M	GEAR	15	12	83522M	HOLDER,WIRE	39	21
81507M	BRUSH HOLDER	15	5	83526M	LEVER,THROTTLE CONTROL	31	23
81531M	STOPPER	13	5	83527M	SHAFT,THROTTLE CONTROL	31	25
81531M	STOPPER (OPT)	5	46	83532M	ROD	33	7
81537M	STAY,CORD CLAMP	13	6	83534M	SHAFT	33	11
81585M	GRIP,STEERING HANDLE	39	2	83537M	BRACKET	31	19
81652M	RECTIFIER	13	14	83537M	BRACKET	33	13
82066M	GROMMET	13	34	83542M	ROD,SHIFT	33	20
82348M	BALL,STEEL	33	5	83544M	LINK,ROD	31	5
82784M	CUP,FILTER	29	10	83547M	BRACKET	31	11
82788M	SPARK PLUG CAP	11	53				
82881M	BOOT,SHIFT ROD	47	52				

# PARTS INDEX

Part Number	Description	Pg.	Ref. No.	Part Number	Description	Pg.	Ref. No.
83548M	LEVER,MAGNETO CONTROL	31	15	83934M	CABLE END	55	15
83551M	BRACKET	31	18	83960M	KNOB,CHOKE	23	30
83551M	BRACKET	31	18	84044M	STOPPER TILT LOCK	35	30
83555M	SHAFT,LINK CONNECTING	31	22	84100M	RETAINER,LINK ROD	31	28
83566M	RETAINER,MAGNETO BASE	9	24	84101M	ROD,MAGNETO CONTROL	31	8
83567M	RETAINER,MAGNETO BASE	9	26	84125M	VOLTAGE REGULATOR		
83569M	PLATE,BASE FRICTION	9	27		ASS'Y	57	13
83579M	STOP,MAGNETO BASE	9	28	84141M	DIAPHRAGM	27	8
83583M	GUIDE, STARTER ROPE	7	3	84305M	BALL JOINT	31	27
83593M	BRACKET(STARBOARD)	7	24	84329M	RECTIFIER ASS'Y	57	14
83595M	ROD	7	33	84348M	SOCKET,BULB	57	7
83596M	LEVER	7	35	84349M	DAMPER	57	8
83597M	CABLE,STARTER STOP	7	36	84351M	PLATE	57	10
83600M	SEAL	3	7	84363M	REPAIR KIT, WATER PUMP	49	-
83601M	EMBLEM, FRONT	3	8	84411M	HOOK,WIRE PULL	13	24
83602M	EMBLEM, REAR	3	9	84651M	FUEL PUMP ASS'Y	27	1
83605M	LEVER, CLAMP	3	20	84854M	RUBBER,HANDLE	39	3
83606M	SEAL	3	27	84872M	I. UNIT ASS'Y	11	46
83618M	FUEL METER	51	3	84874M	IGNITION COIL ASS'Y	11	50
83629M	BRACKET(PORT)	7	23	84877M	PULSER	9	9
83634M	BRACKET	13	20	84879M	COIL,IGNITION	9	3
83635M	REMOTE CONTROL			84892M	COVER	7	21
	ATTACHMENT KIT	55	1	84894M	PAWL, DRIVE	7	17
83651M	ARMATURE	15	1	84942M	SWITCH PANEL ASS'Y	13	1
83654M	FRONT BRACKET	15	13	84959M	EXTENSION	57	26
83698M	BRACKET,MECHANICAL			84960M	WIRE HARNESS EXTENSION	13	37
	STEERING	55	20	84968M	STOP,TILT(STARBOARD)		
83716M	THROTTLE LEVER	55	2		FOR 75 TILT	35	10
83718M	BRACKET,REMOTE			84969M	STOP,TILT(PORT) FOR 75		
	CONTROL	55	5		TILT	35	11
83719M	SHIFT CABLE END ASS'Y	55	8	84971M	HANDLE STEERING	39	1
83720M	CABLE END	55	9	92645M	COVER WATER INLET	47	65
83859M	TRIM TAB	47	69	92646M	COVER,WATER INLET	47	66
83862M	PLATE	47	70	92661M	SWITCH PANEL	13	7
83880M	BEARING CARRIER	47	41	92671M	STOP RING KIT	15	3
83881M	SHIFT CAM (M AND E)	47	48	92672M	WIRE,LEAD	15	15
83882M	SHIFT CAM (ML AND EL)	47	48	93046M	PLATE,PORT	43	32
83883M	BUSHING,SHIFT CAM	47	49	93047M	PLATE,STARBOARD	43	31
83890M	SEAL SUPPORT BRACKET	43	14	93049M	COIL ASS'Y LIGHTING	9	6
83902M	SHIFT CAM (SUL)(OPT)	47	48	93050M	STEERING HANDLE ASS'Y	39	0-1
83905M	BRACKET,TILT LOCK	35	32	93053M	EXTENSION,KILL SWITCH	57	24
83906M	BRACKET,TILT LOCK	35	33	93053M	EXTENSION,STOP SWITCH	57	19
83907M	SHAFT	37	47	93057M	HANDLE,CARRYING	57	1
83910M	MOUNT RUBBER,UPPER			93099M	FUEL CONNECTOR	29	1
	SIDE	41	7	93103M	COVER	3	38
83912M	CAP	41	11	93104M	PLATE	5	43
83914M	MOUNT RUBBER,LOWER			93106M	BRACKET	7	37
	SIDE	41	17	93107M	SEAL	7	22
83918M	ROD,MAGNETO CONTROL	31	8	93108M	BASE ASS'Y MAGNETO	9	2
83919M	PULLEY	31	17	93109M	COVER	9	14
83920M	LEVER,MAGNETO CONTROL	31	20	93111M	STOP,MAGNETO BASE	9	21
83921M	ROD	31	21	93113M	BRACKET	9	34
83926M	SOUND BLANKET, 1	3	13	93115M	COVER	11	41
83927M	SOUND BLANKET, 2	3	14	93116M	HOLDER	11	47
83927M	SOUND BLANKET, 2	3	15	93118M	SOLENOID COIL ASS'Y	13	21
83928M	SOUND BLANKET, 3	3	16	94475M	BRUSH	15	6
83929M	SOUND BLANKET, 4	3	17	94477M	BRACKET,HARNESS	13	38
83932M	BRACKET,REMOTE			94478M	BRUSH	15	7
	CONTROL	55	7	94480M	COVER,CYLINDER HEAD	17	27
				94481M	OUTER COVER,EXHAUST	17	38

# PARTS INDEX

Part Number	Description	Pg.	Ref. No.	Part Number	Description	Pg.	Ref. No.
94482M	POWERHEAD ASSEMBLY, COMPLETE (SEE NOTE)	19	-	10-62568	SCREW,RETAINER TO FUEL TANK COVER	53	18
94484M	HOUSING,OIL SEAL	21	16	10-81277M	SCREW,IDLE SPEED	25	24
94485M	COVER BASE ASS'Y	23	1	10-81292M	SCREW	25	21
94486M	COVER	23	3	10-81293M	SCREW	25	17
94491M	MANIFOLD INTAKE	23	12	10-81500M	BOLT	15	16
94494M	LEVER,CHOKE	23	28	10-81715M	BOLT	21	14
94495M	FLOAT BOWL	25	1	10-82168M	SCREW	17	19
94496M	NOZZLE,MAIN	25	8	10-82405M	BOLT	5	39
94497M	JET,SLOW(#80)	25	10	10-82405M	BOLT	7	26
94500M	CONTENTS OF CARBURETOR REPAIR KIT (M-94500M)	25	-	10-82405M	BOLT	9	38
				10-82405M	BOLT	11	48
				10-82405M	BOLT	17	39
94502M	CAM	31	1	10-82405M	BOLT	17	7
94504M	LEVER,MAGNETO CONTROL	31	9	10-82405M	BOLT	23	17
94506M	HANDLE,GEAR SHIFT	33	1	10-82408M	BOLT	17	25
94507M	CAM,PLATE HANDLE	33	2	10-82419M	BOLT	13	29
94508M	STOP,TILT(STARBOARD) FOR 70 TILT OPT	35	10	10-82428M	BOLT	27	15
94510M	STOP,TILT(PORT) FOR 70 TILT OPT	35	11	10-82436M	BOLT	15	18
				10-82439M	BOLT	17	21
				10-82441M	BOLT	7	25
94511M	TILT LEVER ASS'Y	35	24	10-82441M	BOLT	15	21
94515M	EXHAUST TUBE	43	6	10-82444M	BOLT	35	21
94516M	PLATE	43	10	10-82451M	BOLT	47	50
94517M	APRON	43	19	10-82452M	BOLT	39	12
94519M	SEAL	43	21	10-82453M	BOLT	41	3
94520M	STOP	43	22	10-82453M	BOLT	43	7
94521M	STAY	43	24	10-82464M	BOLT	37	53
94527M	EXTENSION(SUL)	43	34	10-82465M	BOLT	37	68
94726M	VALVE SEAT	25	26	10-82465M	BOLT	41	24
94779M	JET MAIN(#150)	25	9	10-82465M	BOLT	47	62
94799M	FUEL PUMP ASS'Y	27	1	10-82466M	BOLT	37	70
97066M	CLAMP	13	39	10-82467M	BOLT	43	4
97068M	HOUSING,OIL SEAL	21	16	10-82468M	BOLT	37	56
97091M	COVER,WATER INLET	47	65	10-82468M	BOLT	47	56
97109M	SOUND BLANKET, 1	3	13	10-82474M	BOLT	55	21
97110M	SOUND BLANKET, 2	3	14	10-82476M	BOLT	43	17
97111M	SOUND BLANKET, 2	3	15	10-82483M	SCREW	39	6
97112M	SOUND BLANKET, 3	3	16	10-82492M	SCREW	57	16
97113M	SOUND BLANKET, 4	3	17	10-82496M	SCREW	51	8
97114M	MANIFOLD,INTAKE	23	12	10-82499M	SCREW	9	13
97115M	CAM	31	1	10-82522M	SCREW	27	10
97117M	LEVER THROTTLE	33	28	10-83108M	SCREW	13	12
97118M	BRACKET	33	32	10-83327M	BOLT	17	9
97119M	LEVER,SHIFT	33	33	10-83327M	BOLT	57	2
97122M	INDICATOR,THROTTLE	39	4	10-83356M	SCREW	11	42
M-7987M	FLYWHEEL (E AND EL)	9	1	10-83356M	SCREW	23	21
M-80633M	PIECE,FRICTION	37	55	10-83371M	SCREW WITH WASHER	25	13
M-80652M	CONNECTOR,SHIFT ROD	47	54	10-83373M	SCREW WITH WASHER	25	16
M-82095M	SPRING	39	8	10-83375M	SCREW	25	19
M-82515M	SCREW	15	11	10-83392M	SCREW	47	60
M-83538M	LEVER,SHIFT ROD	33	16	10-83481M	SCREW,TRANSOM CLAMP	37	42
M-84428M	WASHER	37	61	10-83501M	BOLT	41	8
M-91649M	STUD	33	26	10-83506M	BOLT	41	14
M-94524M	WASHER	33	29	10-83510M	BOLT	41	20
M-95610M	GASKET	47	61	10-83523M	SCREW	39	22
M-97092M	COVER,WATER INLET	47	66	10-83539M	BOLT	11	51
10-20411	SCREW,FUEL TANK COVER TO FUEL TANK	53	22	10-83539M	BOLT	17	29
10-25575	SCREW,VENT FILLER CAP	53	4	10-83539M	BOLT	29	2
				10-83539M	BOLT	31	13

# PARTS INDEX

Part Number	Description	Pg.	Ref. No.	Part Number	Description	Pg.	Ref. No.
10-83539M	BOLT	33	14	11-82380M	NUT	7	30
10-83539M	BOLT	33	17	11-82380M	NUT	9	40
10-83568M	SCREW	9	25	11-82380M	NUT	23	11
10-83858M	SCREW	47	67	11-82380M	NUT	33	19
10-83870M	SCREW	47	72	11-82381M	NUT	9	30
10-83889M	SCREW, IDLE MIXTURE	25	23	11-82382M	NUT	7	15
10-83924M	SCREW	9	29	11-82382M	NUT	29	13
10-84057M	BOLT	45	8	11-82384M	NUT	57	4
10-84058M	BOLT	39	31	11-82388M	NUT	3	11
10-84058M	BOLT	43	13	11-82389M	NUT	39	17
10-84236M	BOLT	7	31	11-82389M	NUT	43	27
10-84237M	BOLT	3	35	11-82392M	NUT	35	28
10-84237M	BOLT	7	29	11-82392M	NUT(SUL)	43	37
10-84237M	BOLT	17	34	11-82395M	NUT	37	74
10-84237M	BOLT	31	4	11-82395M	NUT	55	24
10-84247M	BOLT	7	4	11-82397M	NUT, CROWN	37	60
10-84247M	BOLT	9	32	11-82400M	NUT	41	15
10-84247M	BOLT	13	17	11-82537M	NUT	27	13
10-84247M	BOLT	21	22	11-83056M	NUT	39	32
10-84247M	BOLT	29	12	11-83611M	NUT	3	36
10-84247M	BOLT	33	24	11-83611M	NUT	41	4
10-84303M	BOLT	7	40	11-84295M	NUT, NYLON	41	10
10-84303M	BOLT	11	45	12-49221	WASHER, VENT SCREW	53	5
10-84303M	BOLT	13	40	12-74711	WASHER, FUEL TANK		
10-84315M	BOLT	3	26		COVER FASTENING		
10-84315M	BOLT	15	17		SCRWE	53	23
10-84342M	BOLT	7	14	12-80271M	WASHER, HOUSING SCREW	51	7
10-84342M	BOLT	15	20	12-80564M	WASHER	17	26
10-84655M	SCREW	9	19	12-80638M	PAD, TRANSOM CLAMP	37	43
10-84880M	SCREW	9	4	12-81461M	WASHER, THRUST	47	40
10-84880M	SCREW	9	7	12-81792M	WASHER	17	8
10-84882M	SCREW	9	10	12-81794M	WASHER	3	24
10-84946M	SCREW	13	8	12-81794M	WASHER	33	21
10-84970M	BOLT	37	71	12-81796M	WASHER	3	34
10-91725M	BOLT	19	48	12-81801M	WASHER	7	13
10-91725M	BOLT	55	6	12-81807M	WASHER	17	10
10-91772M	BOLT	33	22	12-81812M	WASHER	37	73
10-91772M	BOLT	55	3	12-81815M	WASHER	39	27
10-93110M	BOLT	9	15	12-81831M	WASHER	21	12
10-93112M	BOLT	9	22	12-81836M	WASHER	35	6
10-94488M	SCREW	23	5	12-81837M	WASHER	45	37
10-94490M	BOLT	23	7	12-81852M	WASHER	47	74
10-94514M	BOLT	39	24	12-81853M	WASHER	39	26
10-94523M	BOLT	43	26	12-81860M	WASHER	41	18
10-94526M	BOLT	43	30	12-82196M	WASHER	11	43
10-94532M	BOLT	47	58	12-82196M	WASHER	13	11
10-94801M	SCREW	27	12	12-82196M	WASHER	33	9
11-28587	NUT, SPEED-SPRING			12-82198M	WASHER, LOCK	5	40
	RETAINER	53	7	12-82204M	WASHER	39	7
11-81450M	NUT	47	47	12-82204M	WASHER	57	3
11-81767M	NUT	47	53	12-82211M	WASHER	3	10
11-81773M	NUT	9	16	12-82213M	WASHER	23	8
11-81775M	NUT, PROPELLER	49	78	12-82214M	WASHER	21	23
11-81781M	NUT	47	68	12-82214M	WASHER	39	13
11-81786M	NUT, NYLON	39	29	12-82214M	WASHER	47	51
11-81787M	NUT, NYLON	35	7	12-82216M	WASHER	55	10
11-82378M	NUT	13	9	12-82216M	WASHER	55	16
11-82378M	NUT	25	15	12-82217M	WASHER	37	52
11-82378M	NUT	31	7	12-82217M	WASHER	45	9
11-82379M	NUT	33	27	12-82220M	WASHER	37	72

# PARTS INDEX

Part Number	Description	Pg.	Ref. No.	Part Number	Description	Pg.	Ref. No.
12-82220M	WASHER	55	23	13-82212M	WASHER,LOCK	39	18
12-82979M	WASHER	9	37	13-82212M	WASHER,LOCK	43	8
12-83372M	WASHER	25	14	13-82212M	WASHER,LOCK	55	4
12-83458M	WASHER	35	13	13-82215M	WASHER	37	57
12-83462M	WASHER	35	17	13-82215M	WASHER	43	5
12-83482M	WASHER	37	45	13-82215M	WASHER,LOCK	15	19
12-83487M	WASHER	37	50	13-82215M	WASHER,LOCK	35	27
12-83493M	WASHER	33	34	13-82215M	WASHER,LOCK	37	69
12-83493M	WASHER	37	63	13-82215M	WASHER,LOCK	41	25
12-83504M	WASHER	41	12	13-82215M	WASHER,LOCK	47	63
12-83524M	WASHER	39	25	13-82215M	WASHER,LOCK(SUL)	43	38
12-83533M	WASHER	33	8	13-82218M	WASHER,LOCK	47	59
12-83640M	WASHER	13	31	13-82218M	WASHER,LOCK	55	22
12-83652M	WASHER KIT	15	2	13-83457M	WASHER,WAVE	35	12
12-83911M	WASHER	41	9	14-81877M	WASHER,CLAW	47	46
12-83915M	WASHER	41	19	15-81462M	SHIM,REVERSE FEAR ADJUST (0.05MM)	45	39
12-84350M	WASHER	57	9	15-81463M	SHIM,REVERSE GEAR ADJUST(0.08MM)	45	39
12-84429M	WASHER	41	22	15-81464M	SHIM,REVERSE GEAR ADJUST (0.12MM)	45	39
12-84436M	WASHER	9	17	15-81465M	SHIM,REVERSE GEAR ADJUST (0.30MM)	47	39
12-92636M	WASHER	25	20	15-81466M	SHIM,REVERSE GEAR ADJUST (0.50MM)	47	39
12-94524M	WASHER	33	36	15-81467M	SHIM,PINION GEAR ADJUST (0.05MM)	45	21
12-94524M	WASHER	43	28	15-81468M	SHIM,PINION GEAR ADJUST (0.08MM)	45	21
13-81868M	WASHER	31	3	15-81469M	SHIM,PINION GEAR ADJUST(0.12MM)	45	21
13-81869M	WAHSER, WAVE	3	21	15-81470M	SHIM PINION GEAR ADJUST (0.30MM)	45	21
13-81870M	WASHER WAVE	39	28	15-81471M	SHIM PINION GEAR ADJUST (0.50MM)	45	21
13-82184M	WASHER	9	11	16-81728M	STUD	23	16
13-82184M	WASHER	15	10	16-83472M	STUD	35	26
13-82186M	WASHER	9	5	16-84870M	STUD	9	39
13-82186M	WASHER	9	8	16-94528M	STUD(SUL)	43	36
13-82193M	WASHER	9	20	17-20426	RIVET,INDICATOR TO RETAINER	53	17
13-82193M	WASHER	13	10	17-81258M	PIN,DOWEL	17	3
13-82193M	WASHER	13	13	17-81278M	PIN	25	6
13-82193M	WASHER	57	17	17-81889M	PIN	35	41
13-82193M	WASHER,LOCK	13	30	17-81903M	PIN,CROSS	45	34
13-82193M	WASHER,LOCK	23	22	17-81907M	RIVET	39	5
13-82197M	WASHER	5	44	17-82145M	PIN,ROLL	13	23
13-82197M	WASHER	9	23	17-82145M	PIN,ROLL	35	31
13-82197M	WASHER, LOCK	3	25	17-82146M	PIN,ROLL	55	13
13-82197M	WASHER, LOCK	9	33	17-82146M	PIN,ROLL	55	19
13-82197M	WASHER,LOCK	7	28	17-82149M	PIN,ROLL	31	10
13-82197M	WASHER,LOCK	13	18	17-82151M	PIN ROLL	39	15
13-82197M	WASHER,LOCK	23	10	17-82154M	PIN( ) AND ABOVE	33	31
13-82197M	WASHER,LOCK	23	18	17-82154M	PIN,ROLL	31	12
13-82197M	WASHER,LOCK	29	3	17-82156M	PIN,ROLL	23	29
13-82199M	WASHER	11	49	17-82157M	PIN, ROLL	7	6
13-82199M	WASHER	13	41	17-82158M	PIN,ROLL	31	24
13-82199M	WASHER	17	40	17-82162M	SPACER	7	32
13-82199M	WASHER	33	25	17-82354M	PIN,DOWEL	47	57
13-82199M	WASHER, LOCK	7	5	17-82364M	PIN,DOWEL	43	18
13-82199M	WASHER,LOCK	17	30				
13-82199M	WASHER,LOCK	17	35				
13-82199M	WASHER,LOCK	27	16				
13-82199M	WASHER,LOCK	31	14				
13-82199M	WASHER,LOCK	33	15				
13-82200M	WASHER LOCK	29	14				
13-82200M	WASHER,LOCK	7	27				
13-82200M	WASHER,LOCK	15	22				
13-82200M	WASHER,LOCK	17	22				
13-82208M	WASHER,LOCK	27	11				
13-82212M	LOCKWASHER	33	23				



# PARTS INDEX

Part Number	Description	Pg.	Ref. No.	Part Number	Description	Pg.	Ref. No.
17-82364M	PIN,DOWEL(SUL)	43	35	23-94503M	COLLAR	31	2
17-82368M	PIN,DOWEL	17	6	23-94522M	COLLAR	43	25
17-82368M	PIN,DOWEL	37	62	23-94529M	BUSHING(SUL)	43	39
17-83143M	RIVET	3	6	24-22227	SPRING,TENSION-VENT SCREW	53	6
17-83379M	PIN,DOWEL	43	3	24-30189	SPRING,BAYONET BODY STEM	51	19
17-83460M	PIN	35	15	24-80610M	SPRING	27	4
17-83463M	PIN	35	18	24-81496M	SPRING,BRUSH	15	8
17-83477M	PIN	35	36	24-82079M	SPRING	7	39
17-83478M	PIN	35	37	24-82080M	SPRING	25	25
17-83495M	RIVET	37	65	24-82084M	SPRING,COMPRESSION	33	6
17-83536M	PIN,CLEVIS	33	12	24-83340M	SPRING	19	44
17-83540M	PIN,CLEVIS	33	18	24-83429M	SPRING,COMPRESSION	45	36
17-83599M	RIVET	3	4	24-83465M	SPRING	35	20
17-83722M	HOOK,CABLE	55	12	24-83476M	SPRING	35	34
17-83726M	HOOK,CABLE	55	18	24-83488M	SPRING	37	51
17-83904M	TILT PIN ASS'Y	35	29	24-83494M	SPRING	37	64
17-92639M	PIN,INLET NEEDLE	25	5	24-83588M	SPRING, STARTER	7	10
17-97116M	PIN,CLEVIS	33	12	24-83591M	SPRING DRIVE PAWL	7	16
18-82125M	PIN,COTTER	7	34	24-83594M	SPRING	31	16
18-82125M	PIN,COTTER	33	10	24-83721M	SPRING	55	11
18-82127M	PIN	33	30	24-83725M	SPRING	55	17
18-82172M	PIN	33	37	24-83909M	SPRING,COMPRESSION	37	66
18-82752M	PIN,COTTER	35	35	24-92616M	SPRING,LEVER RETURN	35	14
18-84428M	PIN,COTTER	49	79	24-94499M	SPRING	25	22
21-80727M	CHECK VALVE	23	13	24-97120M	SPRING	33	38
21-80727M	CHECK VALVE ASS'Y	17	2	24-97121M	SPRING	33	35
21-83329M	FITTING,DRAIN	17	5	25-20415	O-RING,BAYONET BODY STEM	51	18
21-84650M	CHECK VALVE	27	6	25-80726M	GROMMET	13	27
21-94800M	CHECK VALVE	27	6	25-81989M	GASKET	49	75
22-63187	FITTING,FUEL LINE	51	21	25-82067M	GROMMET	17	42
22-80122M	FITTING,DRAIN	17	4	25-82069M	GROMMET	11	52
22-80218M	FLUSH PLUG (OPT)	49	84	25-82258M	O-RING	13	28
22-80756M	FITTING	23	2	25-82275M	O-RING	45	16
22-80756M	FITTING,WATER	17	15	25-82276M	O-RING	21	4
22-81042M	FUEL CONNECTOR,ENGINE END	51	9	25-82286M	O-RING	21	20
22-81924M	PLUG	45	2	25-82289M	O-RING	47	43
22-81926M	PLUG	19	45	25-82789M	O-RING	51	10
22-82369M	FITTING,GREASE	35	2	25-83348M	O-RING	21	21
22-83369M	PLUG	25	11	25-83362M	O-RING	25	2
22-83616M	FITTING	5	41	25-83505M	SEAL,RUBBER	41	13
22-83857M	PLUG	47	55	25-83607M	GROMMET	3	29
22-94492M	FITTING	23	14	25-83608M	GROMMET	3	30
23-81327M	COLLAR	51	15	25-83608M	GROMMET	57	25
23-81945M	BUSHING	39	9	25-83609M	GROMMET	3	31
23-81946M	BUSHING	31	26	25-83638M	GROMMET	13	26
23-81949M	BUSHING	3	22	25-83728M	GROMMET	55	26
23-81950M	BUSHING	39	23	25-84760M	GROMMET	23	31
23-81952M	BUSHING	33	3	25-84957M	O-RING	29	9
23-82851M	COLLAR	9	36	25-93100M	GROMMET (M AND ML)	3	28
23-83458M	BUSHING	37	48	25-93101M	GROMMET	3	32
23-83480M	SPACER	35	39	25-93114M	DAMPER	9	35
23-83483M	BUSHING	37	46	25-94476M	GROMMET	13	36
23-83531M	BUSHING	33	4	25-94476M	GROMMET	55	25
23-83585M	BUSHING	7	7	25-94498M	O-RING	25	18
23-83589M	BUSHING	7	11	25-94518M	DAMPER	43	20
23-83590M	SPACER	7	12	25-94525M	GROMMET	43	29
23-83610M	BUSHING	3	33	25-94536M	GROMMET	57	20
23-83639M	COLLAR	13	25				
23-94487M	COLLAR	23	4				

# PARTS INDEX

Part Number	Description	Pg.	Ref. No.	Part Number	Description	Pg.	Ref. No.
25-94536M	GROMMET	57	25	32-82006M	HOSE	23	15
25-97070M	O-RING	25	27	32-82023M	HOSE,BULB TO CONNECTOR	51	13
26-81426M	RUBBER,WATER SEAL	45	7	32-83328M	HOSE	17	14
26-81427M	RUBBER,WATER SEAL	49	76	32-83451M	TUBE,WATER (M AND E)	47	73
26-82248M	OIL SEAL	21	18	32-83452M	TUBE,WATER(ML AND EL)	47	73
26-82248M	OIL SEAL	21	19	32-83628M	FUEL LINE ASS'Y	51	0-1
26-82249M	OIL SEAL	21	3	32-83903M	TUBE,WATER (SUL)	47	73
26-83347M	OIL SEAL	21	17	32-84955M	HOSE,CONNECTOR HOUSING TO BULB	51	11
26-83406M	OIL SEAL	45	17	32-84972M	HOSE	29	4
26-83486M	OIL SEAL	37	49	32-84973M	HOSE	29	15
26-83490M	RUBBER,SEAL	37	54	32-94479M	HOSE	17	16
26-93048M	SEAL	43	33	32-94501M	HOSE	29	16
26-97069M	OIL SEAL	21	18	33-82372M	SPARK PLUG(B-8HS)NGK	17	41
27-25568	GASKET,FILLER CAP TO FUEL TANK	53	8	34-84954M	REED SET(REED STOPS NOT INCLUDED)	23	24
27-28862	GASKET,COVER ASS'Y TO FRAME	53	19	34-94493M	REED VALVE ASS'Y	23	23
27-54921	GASKET,FUEL GAUGE LENS	53	12	35-80617M	FILTER ASS'Y	29	6
27-80613M	GASKET,BODY TO BASE	27	5	35-82783M	ELEMENT,FILTER	29	8
27-80614M	GASKET,BODY TO COVER	27	7	36-25392A2	FILLER CAP ASS'Y	53	3
27-80757M	GASKET,FUEL PUMP TO CRANKCASE	27	14	36-83617M	FUEL TANK CAP	51	2
27-81320M	GASKET,HOUSING TO TANK	51	4	37-75881	DECAL,FUEL TANK	53	2
27-81987M	GASKET	45	3	37-81202M	DECAL, SHIFT	3	18
27-81990M	GASKET,PLUG	19	46	37-82866M	DECAL SET	3	12
27-82790M	GASKET	29	7	37-82984M	DECAL,SIDE	51	1
27-83332M	GASKET,CYLINDER HEAD	17	24	37-83761M	DECAL, HP	5	42
27-83334M	GASKET,HEAD COVER	17	28	37-84888M	DECAL,TIMING	11	54
27-83336M	GASKET,THERMOSTAT	17	33	39-83896M	PISTON RING SET(STANDARD)	21	8
27-83338M	GASKET, EXHAUST COVER	17	37	39-83897M	PISTON RING SET (1ST OVER SIZE 75.25 MM)	21	8
27-83352M	GASKET,CARBURETOR	23	9	39-83898M	PISTON RING SET (2ND OVER SIZE 75.50MM)	21	8
27-83355M	GASKET,INTAKE MANIFOLD	23	20	41-83345M	PIN,PISTON	21	9
27-83360M	GASKET,INTAKE MANIFOLD	23	25	43-80778M	GEAR	39	14
27-83378M	GASKET,DRIVESHAFT HOUSING	43	2	43-83877M	GEAR,FORWARD	45	29
27-83381M	GASKET,UPPER HOUSING	43	9	43-83879M	GEAR,REVERSE	45	38
27-83383M	GASKET,EXHAUST MANIFOLD	43	11	43-94512M	PINION	39	16
27-83398M	GASKET,WATER PUMP	45	11	44-94531M	SHAFT,PROPELLER	45	30
27-83399M	GASKET,WATER PUMP	45	13	45-83866M	DRIVE SHAFT (M AND E)	45	18
27-83861M	GASKET	47	71	45-83867M	DRIVE SHAFT (ML AND EL)	45	18
27-83865M	GASKET,WATER PUMP	45	15	45-83895M	DRIVE SHAFT (SUL)(OPT)	45	18
27-94483M	GASKET SET, POWERHEAD	19	-	46-83396M	COVER,WATER PUMP	45	5
27-94489M	GASKET,COVER	23	6	46-83864M	BASE,WATER PUMP	45	14
27-94533M	GASKET SET, LOWER UNIT	49	-	46-83884M	CHROME WATER PUMP KIT(OPT)	49	80
28-81915M	KEY,FLYWHEEL	21	24	47-83397M	IMPELLER	45	10
28-81916M	KEY	47	44	50-83587M	STARTER, SHEAVE	7	9
28-83444M	KEY,WATER PUMP	45	19	50-92669M	ELECTRIC MOTOR ASS'Y	15	0-1
29-82353M	BEARING,NEEDLE	21	11	52-81473M	CLUTCH,SLIDING	45	33
30-82296M	BEARING,BALL	47	42	53-28903	FASTENER,RETAINING FRAME TO FUEL TANK	53	21
30-82304M	BEARING	21	6	53-81264M	CLIP,PISTON PIN	21	10
31-82311M	BEARING,NEEDLE	21	15	53-83461M	SNAP RING	35	16
31-82313M	BEARING,NEEDLE	21	5	53-84895M	SNAP RING	7	18
31-82317M	BEARING,NEEDLE	47	45	53-94530M	SNAP RING(SUL)	43	40
31-82319M	BEARING,TAPERED ROLLER	45	20	54-80752M	CLAMP,HOSE	51	14
31-82320M	BEARING,TAPERED ROLLER	45	28	54-82042M	CLAMP	9	18
31-83341M	BEARING,NEEDLE	21	2	54-82046M	CLAMP	17	13
32-33909A3	TUBE ASS'Y	53	10				
32-81999M	HOSE	17	12				
32-82000M	HOSE	17	11				

# PARTS INDEX

Part Number	Description	Pg.	Ref. No.	Part Number	Description	Pg.	Ref. No.
54-82047M	CLAMP	17	17	2168-7984M	COWLING, BOTTOM	3	19
54-82047M	CLAMP	29	5	2169-7101M	STARTER ASS'Y	7	1
54-82781M	CLIP	25	7	2169-7102M	HOUSING STARTER	7	2
54-83507M	HOSE CLAMP ASS'Y	41	16				
54-84893M	CLIP	7	20				
79-84311M	TACHOMETER KIT	57	5				
84-81250M	WIRE,GROUND	11	44				
84-83637M	WIRE,PULL	13	22				
84-84124M	EXTENSION	57	21				
84-84352M	EXTENSION,LEAD	57	11				
84-84353M	CONNECTOR	57	12				
84-84711M	WIRE HARNESS EXTENSION	13	35				
84-84883M	LEAD WIRE	9	12				
84-93117M	HARNESS ASS'Y	13	15				
84-93119M	WIRE HARNESS	13	32				
84-93120M	WIRE HARNESS ASS'Y	13	33				
87-84938M	NEUTRAL START SWITCH	13	19				
87-84943M	MAIN SWITCH	13	2				
87-84944M	SWITCH,CHOKE	13	3				
87-84945M	KILL SWITCH ASS'Y	13	4				
87-84963M	SWITCH ASS'Y,KILL	57	22				
87-84966M	SWITCH ASS'Y STOP	57	18				
87-93102M	STOP SWITCH (M AND E)	3	37				
87-94537M	SWITCH ASS'Y, KILL (OPT)	5	45				
88-80007M	BULB	57	6				
88-81522M	FUSE	13	16				
88-81522M	FUSE	57	15				
89-84933M	SOLENOID	15	14				
91-81669M	TOOL KIT ASS'Y	29	17				
253-7985M	FLYWHEEL MAGNETO ASS'Y (E AND EL)	9	0-1				
253-7986M	FLYWHEEL MAGNETO ASS'Y (M AND ML)	9	0-1				
253-7988M	FLYWHEEL (M AND ML)	9	1				
463-6984M	CRANKSHAFT	21	1				
629-8401M	CONNECTING ROD ASS'Y	21	13				
761-8015M	PISTON ASS'Y (STANDARD)	21	7				
761-8016M	PISTON ASS'Y (1ST OVER SIZE 75.25 MM)	21	7				
761-8017M	PISTON ASS'Y (2ND OVER SIZE 75.50MM)	21	7				
870-7989M	CRANKCASE ASS'Y	17	1				
968-6983M	HEAD,CYLINDER	17	23				
1225-1529	FUEL TANK	53	1				
1225-1529A21	FUEL TANK ASS'Y	53	0-1				
1383-7991M	CARBURETOR ASS'Y	25	0-1				
1484-8439M	BRACKET,CLAMP(PORT)	35	4				
1484-8440M	BRACKET,CLAMP( STARBOARD)	35	5				
1485-6996M	BRACKET,SWIVEL	35	1				
1587-7992M	DRIVESHAFT HOUSING (M AND E)	43	1				
1587-7992M	DRIVESHAFT HOUSING (ML,EL AND SUL)	43	1				
1651-7121M	GEARHOUSING	45	1				
1651-7994M	GEARHOUSING ASS'Y (M AND E)	45	0-1				
1651-7995M	GEARHOUSING ASS'Y (ML AND EL)	45	0-1				
2168-7103M	TOP COWLING ASS'Y	3	1				