



PARTS CATALOG

85 H.P.

SERIAL NUMBER

85 (1980) 850H0A

TABLE OF CONTENTS:

ACCESSORIES	54
CARBURETOR	14
CRANKSHAFT AND PISTON	26
DISTRIBUTOR	10
ELECTRICAL COMPONENTS	4
ENGINE COVER AND SUPPORT PLATE	2
FUEL TANK AND LINE	38
GEAR HOUSING	32
MOTOR LEG	28
PARTS INDEX	57
POWER HEAD	20
POWER TRIM UNIT	44
REMOTE CONTROL	40
SPECIAL TOOLS - DECAL REPAIR SHEETS	53
SPECIAL TOOLS - GEAR HOUSING	50
SPECIAL TOOLS - LUBRICANTS AND SEALANTS	52
SPECIAL TOOLS - POWER HEAD	49
SPECIAL TOOLS - TEST EQUIPMENT	51
SPECIAL TOOLS - TUNE-UP	48
STARTER	8

NOTE: Indented description indicate that these parts are included in preceeding assembly.

AR = As Required

NSS = Not Sold Separate

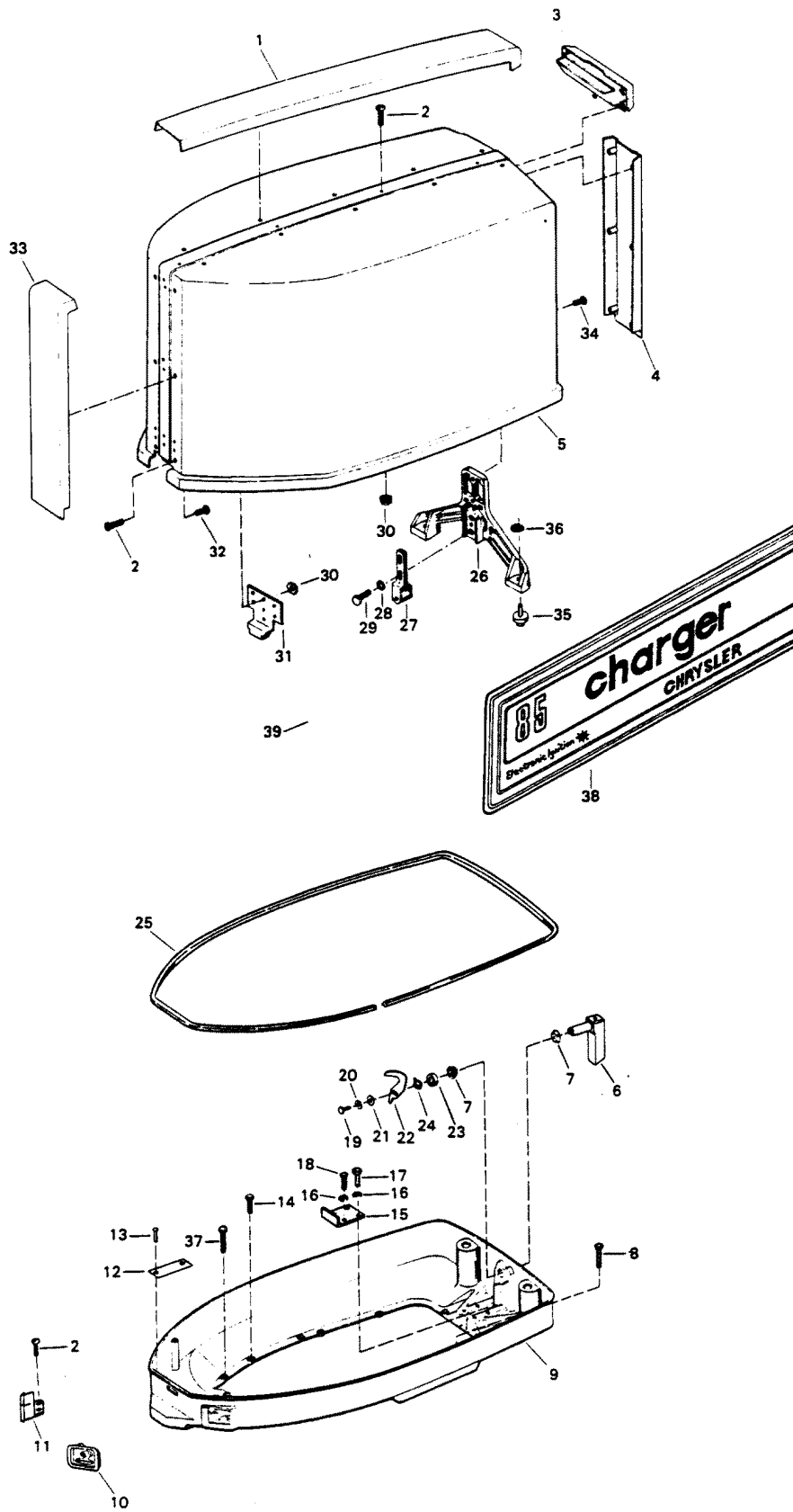
OPT = Optional

NS = Not Shown

THESE PARTS BOOKS/FICHE CARD ARE COPYRIGHTED AND MAY NOT BE DISTRIBUTED OR REPRODUCED IN ANY OTHER FORMAT BY ANYONE OTHER THAN MERCURY MARINE WITHOUT THE PRIOR WRITTEN CONSENT OF MERCURY MARINE.

THIS PAGE INTENTIONALLY LEFT BLANK

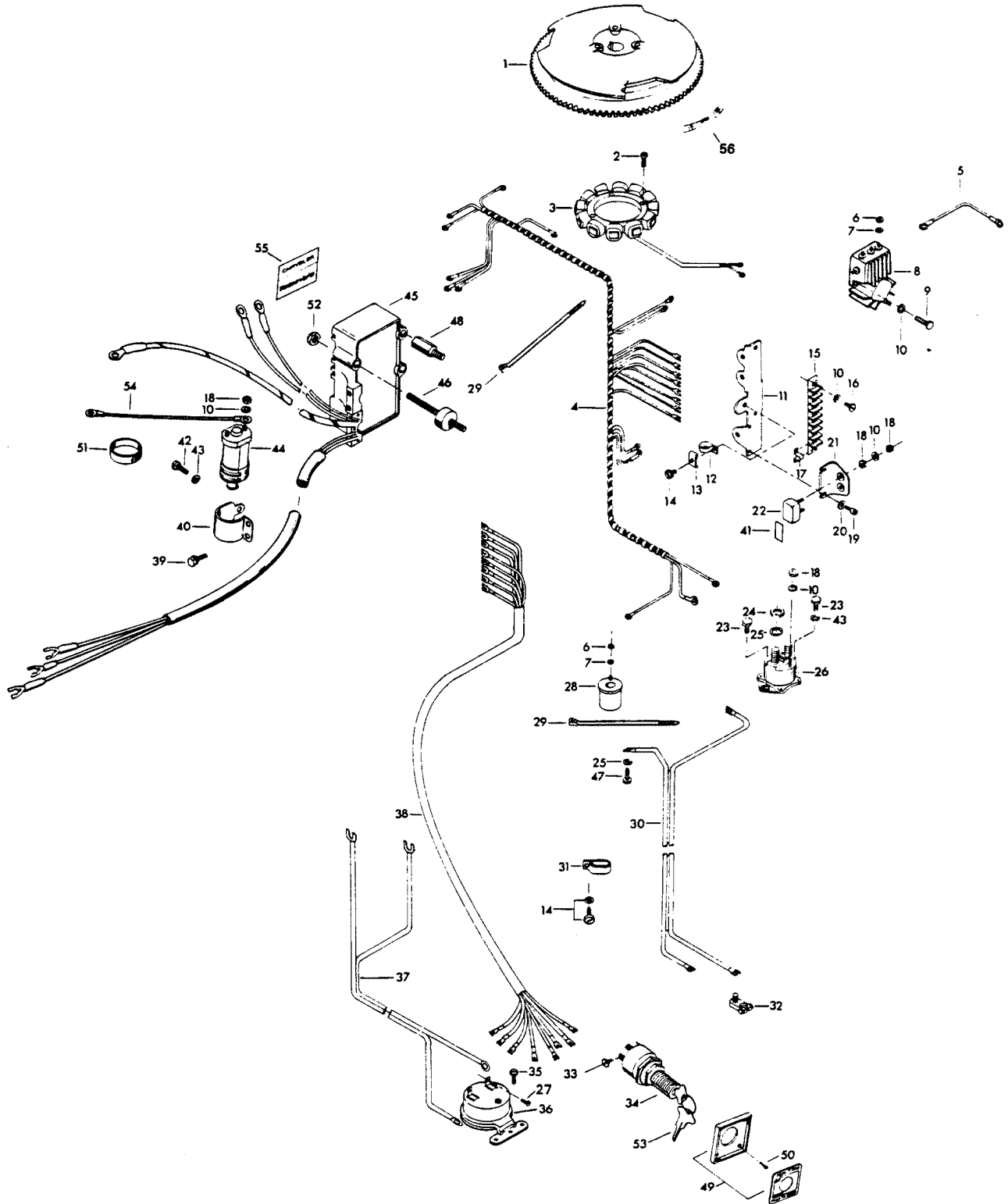
ENGINE COVER AND SUPPORT PLATE



ENGINE COVER AND SUPPORT PLATE

REF. NO.	PART NO.	SYM.	QTY.	DESCRIPTION
1	FA480179		1	TRIM, TOP
2	F1733		10	PAN HD SCREW, 10 - 24 X 9/16
3	FA480269		1	TILT HANDLE
4	FA548180		1	TRIM, REAR
5	FA549944		1	ENGINE COVER W/RETAINER, SCREWS AND NUTS
-	3C584944		1	ENGINE COVER COMPLETE INCLUDES ALL ITEMS MARKED WITH AN ASTERISK (*)
6	FA481469		1	ENGINE COVER LATCH HANDLE W/SHAFT
7	F480818		2	BEARING, LATCH SHAFT
8	F1535		6	HEX CAP SCREW, 1/4 - 20 X 3/4
9	F480038-2		1	SUPPORT PLATE
10	F549189		1	BUSHING, ELECTRIC CABLE
11	F545189		1	BUSHING, CABLE ENTRY
12	FA535395		1	IDENTIFICATION PLATE W/SCREWS
13	F1447		2	ROUND HD SCREW, 2 X 3/16
14	F1540		5	HEX SLOT HD SCREW, 1/4 - 20 X 5/8
15	F335654-1		1	DEFLECTION STOP
16	F8096		4	SPRING LOCKWASHER
17	F1857		2	HEX CAP SCREW, 5/16 - 18 X 5/8
18	F1858		2	HEX CAP SCREW, 5/16 - 18 X 1
19	F1541		1	HEX CAP SCREW, 1/4 - 20 X 5/8
20	F8083		1	SPRING LOCKWASHER
21	F8004		1	PLAIN WASHER
22	F481777		1	CAM, LATCH SHAFT
23	F481382-1		1	SPACER, LATCH SHAFT
24	F2047		1	WAVE SPRING WASHER
25	F321756		1	PACKING
26	F481774		1	BRACKET, ENGINE COVER LATCH
27	FA481743		1	BRACKET, ROLLER LATCH
28	F8096		2	SPRING LOCKWASHER
29	F1857		2	HEX CAP SCREW, 5/16 - 18 X 5/8
30	F1473		7	HEX NUT, 10 - 24
31	F373778-1		1	RETAINER, ENGINE COVER
32	F2066		26	PAN HD TAPPING SCREW, 10 X 7/16
33	FA548888		1	TRIM, FRONT
34	F1730		2	PAN HD SCREW W/SPRING LOCKWASHER, 1/4 - 20 X 5/8
35	F481434		2	GUIDE, ENGINE COVER
36	F2088		2	FASTENER
37	F1708		2	HEX HD CAP SCREW, 1/4 - 20 X 1 3/8
38	FA584397		1	DECAL, PORT
-	FA584396		1	DECAL, STARBOARD
-	F548894		1	BLANKET, SILENCER TOP (NOT SHOWN)
-	F548985		2	BLANKET, SILENCER SIDE (NOT SHOWN)

ELECTRICAL COMPONENTS

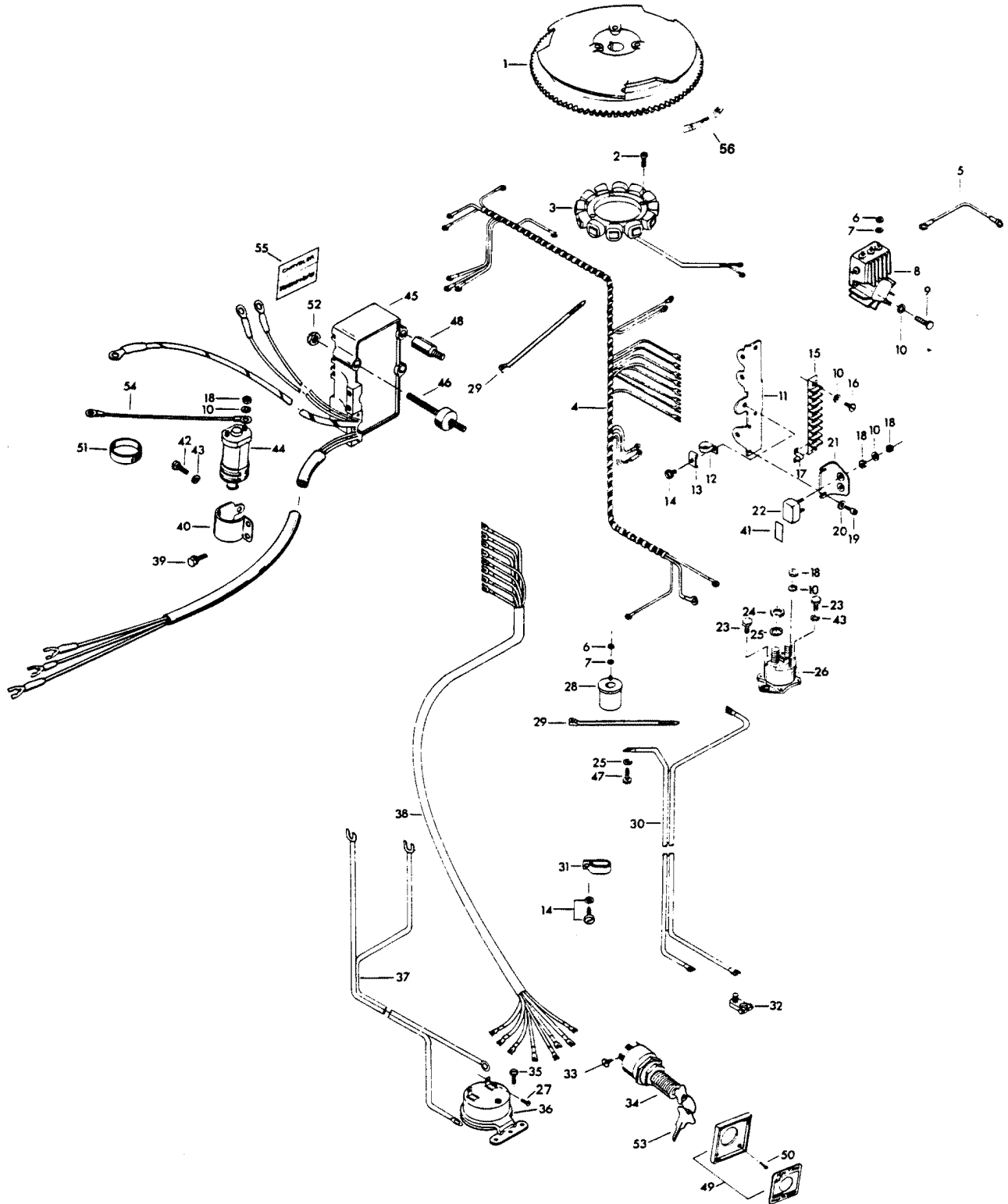


ELECTRICAL COMPONENTS

REF. NO.	PART NO.	SYM.	QTY.	DESCRIPTION
1	F404097		1	FLYWHEEL
2	F1678		6	FILL HD SCREW, 10 - 24 X 13/16
3	F85095-2		1	STATOR
4	F438744-1		1	WIRING HARNESS
5	F345683		1	WIRE, REGULATOR-RECTIFIER GROUND
6	F1647		5	HEX NUT, 8 - 32
7	F8056		5	SPRING LOCKWASHER
8	F404470-1		1	REGULATOR-RECTIFIER
9	F2107		3	FILL HD SCREW, 10 - 24 X 5/8
10	F1975		11	SPRING LOCKWASHER
11	FA438493		1	TERMINAL BLOCK BRACKET WITH ITEMS 13, 14 (ITEM 6 ON PAGE 14)
12	F289446-1		1	CLAMP
13	F438668		1	RETAINER, CABLE CLAMP
14	F1734		2	FILL HD SCREW W/LOCKWASHER, 1/4 - 20 X 1/2
15	FA510497		1	TERMINAL BLOCK
16	F1648		2	PAN HD SCREW, 10 - 24 X 3/4
17	F307317		1	CLIP, TERMINAL BLOCK
18	F1513		8	HEX NUT
19	F1760		2	PAN HD SCREW, 10 - 24 X 3/8
20	F8011		2	PLAIN WASHER
21	F91446-1		1	CIRCUIT BREAKER BRACKET
22	F510460		1	CIRCUIT BREAKER
23	F1536		2	HEX CAP SCREW, 1/4 - 20 X 3/4
24	F1515		2	HEX NUT
25	F8096		3	SPRING LOCKWASHER
26	F460917		1	STARTER RELAY
27	F1645		2	RD HD SCREW, 6 - 32 X 1/4
28	F85924		1	CHOKE SOLENOID
29	F1877		2	TY-RAP
30	F381896-4		1	BATTERY CABLE
31	F407446		1	CLAMP
32	F5H041		1	BATTERY TERMINAL KIT (ACCESSORY ITEM)
33	F1280		5	PAN HD SCREW, 8 - 32 X 1/4
34	F5H078		1	IGNITION SWITCH (LONG BARREL) W/KEYS AND SCREWS (ACCESSORY ITEM)
35	F1741		2	PAN HD SCREW, 8 X 3/4
36	F5H043		1	OVERHEAT BUZZER (ACCESSORY ITEM)
37	F404841		1	CABLE, HEAT INDICATOR
38	F85843-1		1	REMOTE ELECTRIC CABLE, 18 FEET
39	F1851		2	FILL HD SCREW W/LOCKWASHER, 10 - 24 X 1/2
40	F404513		1	COIL CLAMP
41	F510374		1	DECAL, CIRCUIT BREAKER - USA
42	F1546		1	HEX HD SCREW, 1/4 - 20 X 1/2

CONTINUED ON NEXT PAGE ➡

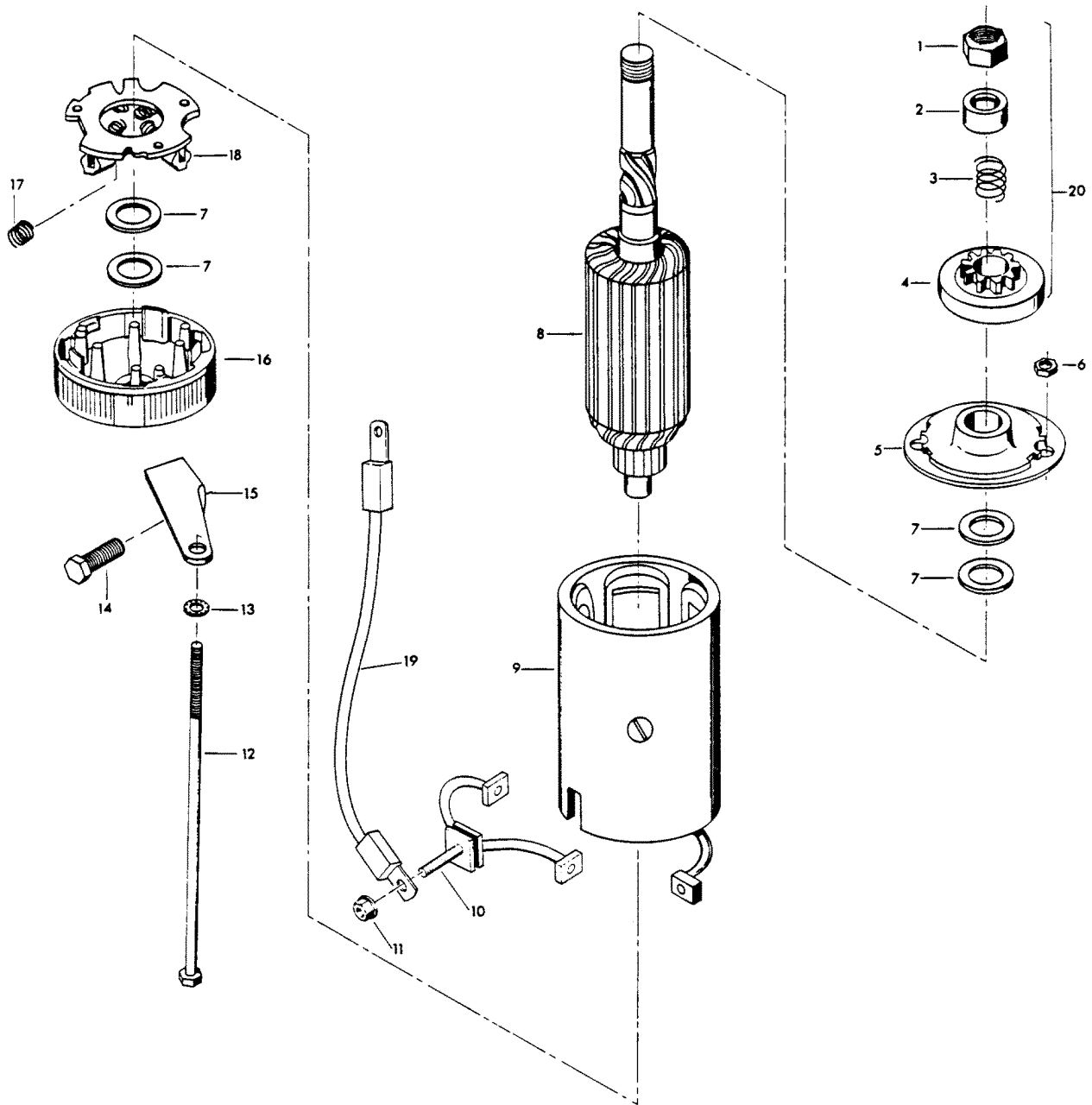
ELECTRICAL COMPONENTS



ELECTRICAL COMPONENTS

REF. NO.	PART NO.	SYM.	QTY.	DESCRIPTION
43	F8083		2	SPRING LOCKWASHER
44	F345475-1		1	COIL
45	300-817855A1		1	UNIT (ORIGINAL FORCE P/N A 523301-1)(Does not include Coil & Clamp)
46	F523962		3	SHOCK MOUNT
47	F2000		1	HEX CAP SCREW, 5/16 - 18 X 3/4
49	F5H038		1	IGNITION SWITCH MOUNTING KIT (ACCESSORY ITEM)
50	F1934		4	FLAT HD SLOTTED SCREW, 6 X 1/2
51	F391983		2	BAND, RETAINING
52	F1892		3	STOP NUT
53	FA368700		1	IGNITION KEY - NO LETTER OR STAMPED A
-	FB368700		1	IGNITION KEY STAMPED B
-	FC368700		1	IGNITION KEY STAMPED C
-	FD368700		1	IGNITION KEY STAMPED D
-	FE368700		1	IGNITION KEY STAMPED E
54	F85664		1	GROUND WIRE
55	480373		1	DECAL, MAGNAPOWER IGNITION
56	F474387		1	TIMING DECAL

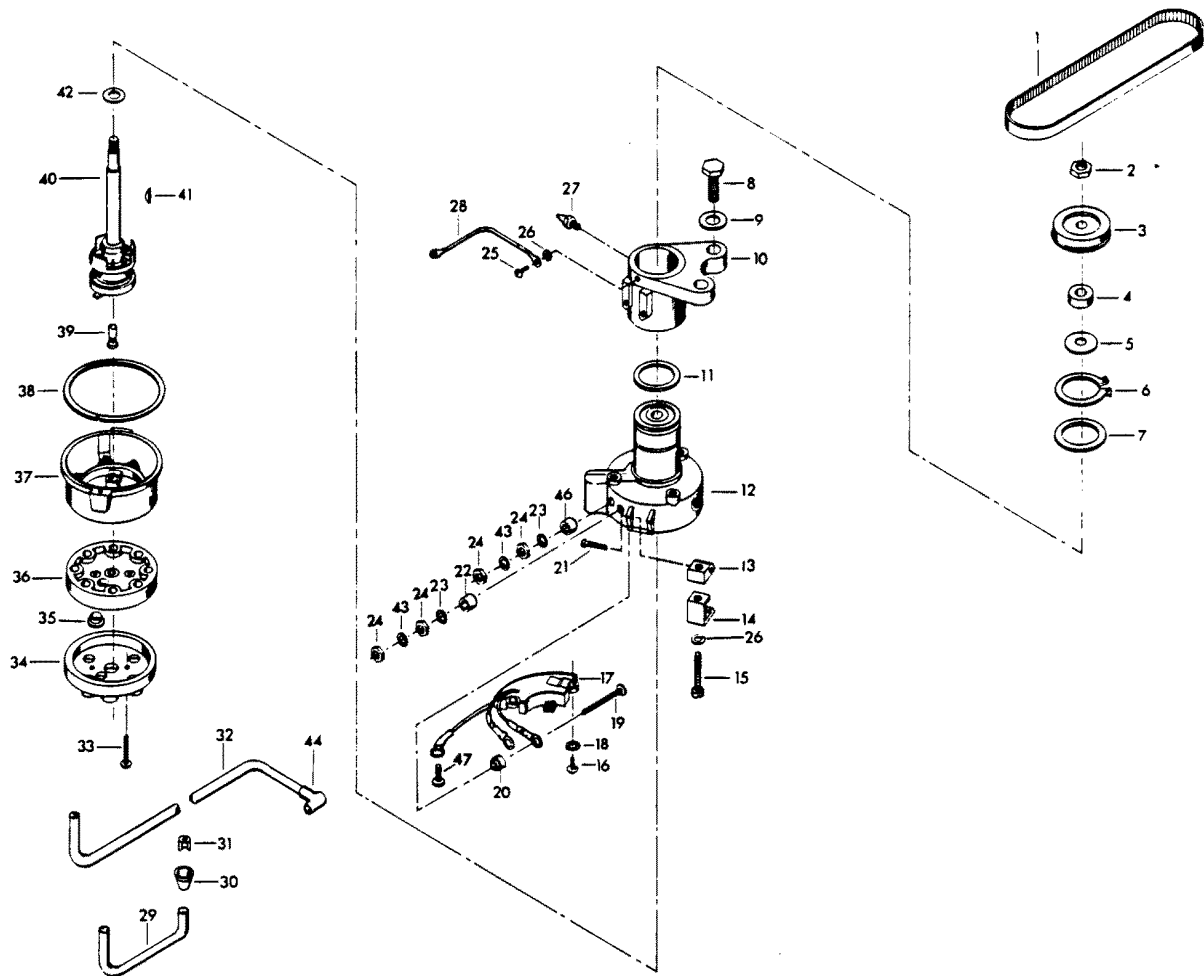
STARTER



STARTER

REF. NO.	PART NO.	SYM.	QTY.	DESCRIPTION
1	F15111		1	NUT, STOP RETAINING
2	F15112		1	STOP, PINION
3	F15080		1	SPRING
4	F15110		1	CLUTCH ASSEMBLY
5	F15167		1	HEAD ASSEMBLY DRIVE END
6	F1641		2	LOCK NUT, 1/4 - 28
7	F15126		1	THRUST WASHER PACKAGE
8	F15099		1	ARMATURE
9	15169		1	FRAME AND FIELD ASSEMBLY
10	F15165		1	BRUSH TERMINAL SET
11	FA15072		1	HEX LOCK NUT, 1/4 - 20
12	F15168		1	THRU BOLT PACKAGE
13	F8028		2	PLAIN WASHER
14	F1502		1	HEX HD SCREW, 1/4 - 20 X 5/8
15	F511675		1	STARTER BRACKET, LOWER
16	F15125		1	HEAD ASSEMBLY, COMMUTATOR END
17	F15034		1	SPRING SET
18	F15057		1	BRUSH PLATE AND HOLDER
19	F85908		1	STARTER LEAD WIRE
20	F15100		1	BENDIX
-	FS480955		1	STARTER COMPLETE INCLUDES ITEMS MARKED WITH AN ASTERISK (*)

DISTRIBUTOR

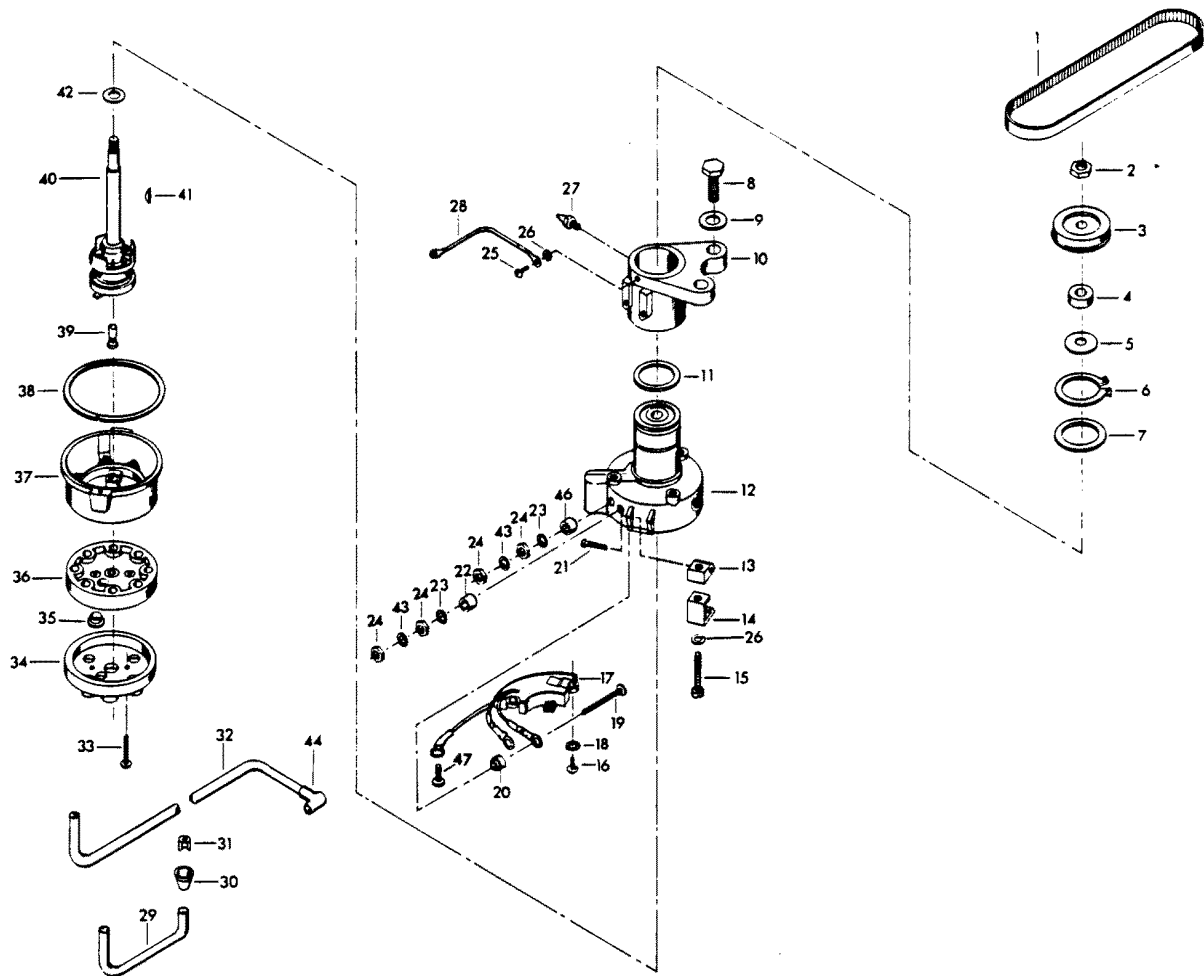


DISTRIBUTOR

REF. NO.	PART NO.	SYM.	QTY.	DESCRIPTION
1	F85311		1	DISTRIBUTOR BELT
2	F7013		1	STOP NUT
3	817786A1		1	DISTRIBUTOR PULLEY
4	F14025		1	SPACER
5	F14028		1	THRUST WASHER
6	F85173		1	RETAINING RING
7	F14029		1	THRUST WASHER
8	F1612		2	HEX CAP SCREW, 3/8 - 16 X 1/4
9	F1778		2	PLAIN WASHER
10	FA321574		1	DISTRIBUTOR BRACKET
11	F1759		2	SHIM, DISTRIBUTOR (QTY. AS REQUIRED)
12	F14042		1	DISTRIBUTOR HOUSING W/BEARINGS
13	F14036		2	SWIVEL
14	F14037		2	CAP CLIPS
15	F14038		2	CAP CLIP SCREWS
16	F14045		2	SCREW
17	FA14048-2		1	PREAMPLIFIER
18	F8056		2	LOCKWASHER
19	F14046		2	TERMINAL SCREW
20	F14047		2	TERMINAL INSULATOR (INSIDE)
21	F14015		2	CAP CLIP RIVET
22	F14049		1	TERMINAL INSULATOR (OUTSIDE)
23	F14041		2	EXTERNAL TOOTH LOCKWASHER
24	F1647		4	HEX NUT, 8 - 32
25	F1760		2	PAN HD SCREW, 10 - 24 X 3/8
26	F1975		2	SPRING LOCKWASHER
27	F213274		1	GREASE FITTING
28	F85664		1	DISTRIBUTOR GROUND
29	84-817775A1		1	COIL WIRE W/TERMINAL CLIP
30	F203276		1	BOOT
31	F203673		1	TERMINAL CLIP
32	F321841-3		3	LEAD WIRE
33	F14007		2	CAP SCREW
34	F14011-1		1	CAP COVER
35	F14040		2	VENT
36	F14020-1		1	CAP SEAL
37	F14006-2		1	CAP BASE
38	F14030		1	CAP GASKET
39	F14012-1		1	BRUSH
40	F14043		1	DISTRIBUTOR SHAFT
41	F1692		1	WOODRUFF KEY
42	F14024		1	SPACER
43	F8056		2	LOCKWASHER

CONTINUED ON NEXT PAGE ➡

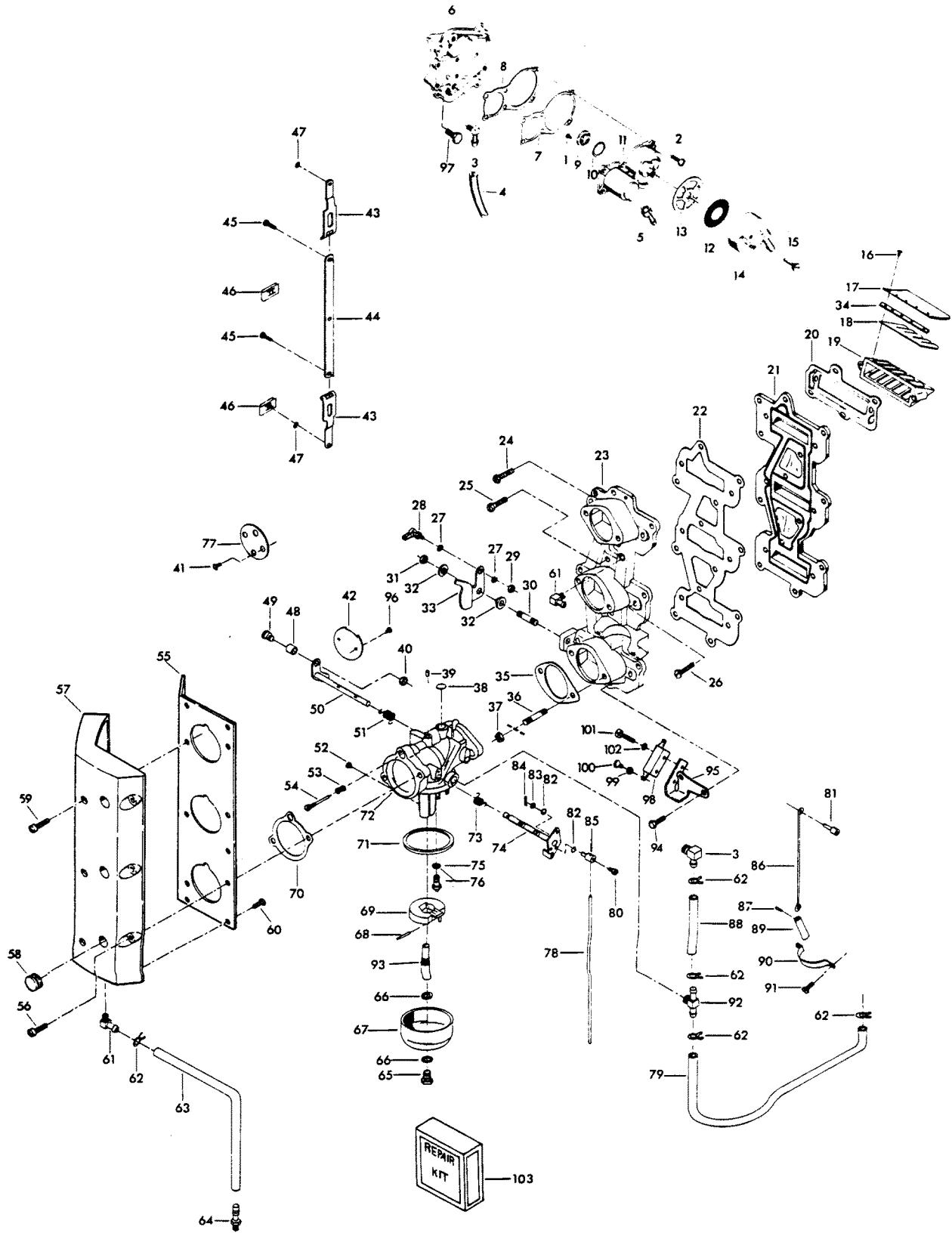
DISTRIBUTOR



DISTRIBUTOR

REF. NO.	PART NO.	SYM.	QTY.	DESCRIPTION
44	FK750-3		3	SPARKIE
46	F14017		1	TERMINAL INSULATOR (OUTSIDE)
47	F14056		1	SCREW
-	817822A1		1	DISTRIBUTOR COMPLETE INCLUDES ITEMS MARKED WITH AN ASTERISK (*) ORIGINAL FORCE P/N A 480309-1
-	481373-1		1	DECAL, "ELECTRONIC" (NOT SHOWN)

CARBURETOR

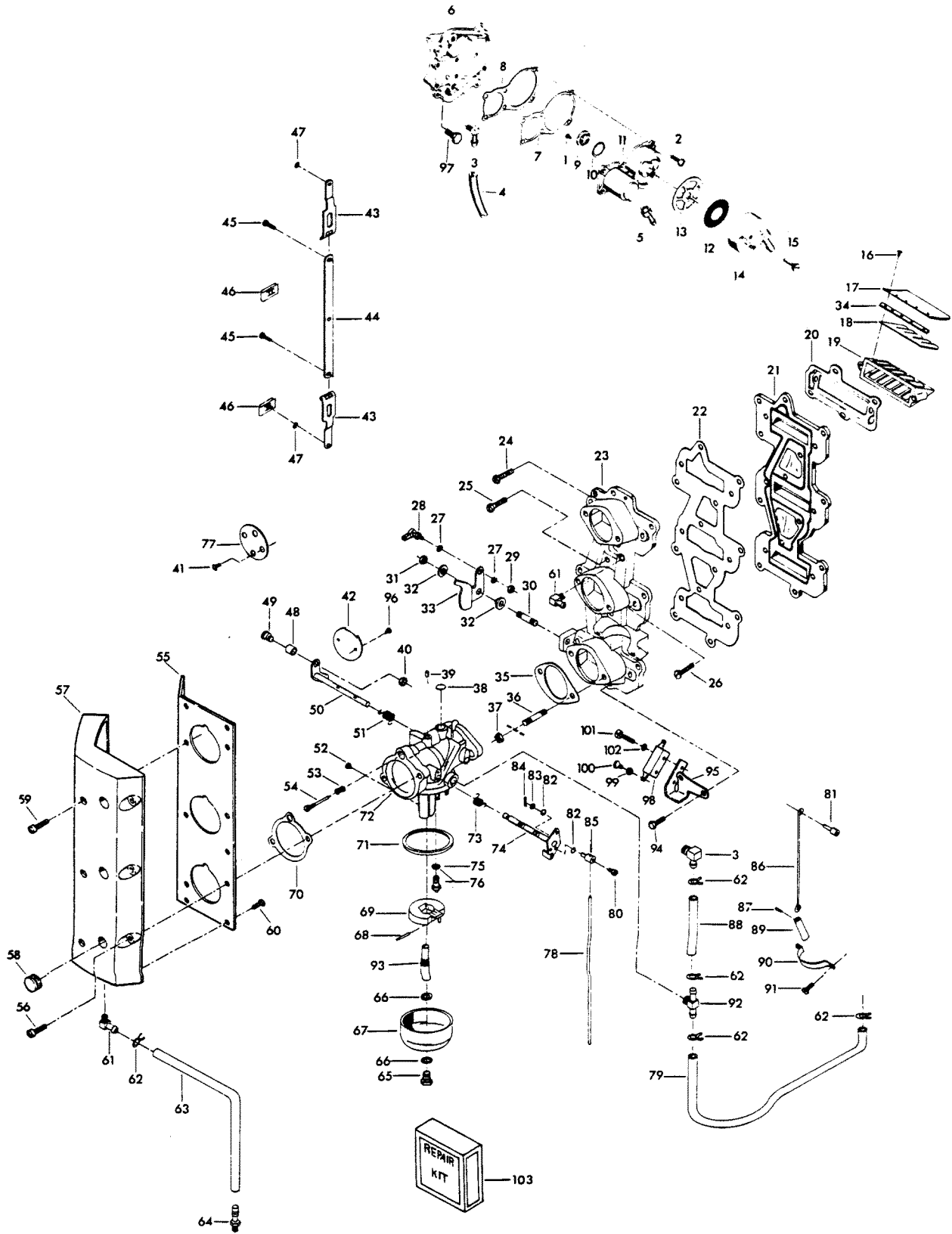


CARBURETOR

REF. NO.	PART NO.	SYM.	QTY.	DESCRIPTION
1	F1860		2	SLOTTED BINDING HD SCREW, 6 - 32 X 1/4
2	F1108		6	FILL HD SCREW W/LOCKWASHER, 1/4 - 20 X 3/4
3	F84314-2		1	ELBOW
4	F89758		1	FUEL PUMP AIR HOSE, TOP
5	F438801		1	FITTING
6	FA439746		1	FUEL PUMP COVER
7	F438747		1	FUEL PUMP DIAPHRAGM
8	F438760		1	FUEL PUMP GASKET
9	F177330		3	FUEL PUMP VALVE
10	F84792		1	GASKET, FUEL PUMP VALVE
11	FA438431		1	FUEL PUMP BODY W/VALVES
12	F438653		1	FUEL SEDIMENT BOWL SCREEN
13	F438617		1	FUEL SEDIMENT BOWL GASKET
14	F438500		1	FUEL SEDIMENT BOWL
15	F438165		1	SCREW, FUEL PUMP BOWL
16	F1755		30	RD HD SCREW W/LOCKWASHER, 6 - 32 X 5/16
17	F85161-1		6	REED STOP
18	F530160		6	REED (5 PETAL)
19	F3A52318		3	REED PLATE W/REEDS, REED STOP AND SCREW
20	F85168		3	GASKET REED PLATE ADAPTER
21	F85162		1	REED PLATE ADAPTER
22	F85159		1	GASKET, INTAKE MANIFOLD
23	817959A3		1	INTAKE MANIFOLD
24	F2008		7	HEX HD SCREW, 1/4 - 20 X 7/8
25	F1916		2	HEX HD SCREW, 1/4 - 20 X 1/8
26	F2050		6	HEX HD SCREW, 1/4 - 20 X 1/2
27	F8058		2	INTERNAL TOOTH LOCKWASHER
28	817747--1		1	BALL JOINT W/STUD
29	F1513		1	HEX NUT, 10 - 32
30	F433209-1		1	STUD
31	F1910		1	STOP NUT, 1/4 - 20
32	F269319		2	BEARING
33	F85192-1		1	THROTTLE CAM
34	F523451		6	SPACER, REED STOP
35	F85906		3	CARBURETOR GASKET
36	F40209		6	CARBURETOR STUD
37	F1515		6	HEX NUT, 5/16 - 18
38	FO4326		1	BODY CHANNEL WELCH PLUG
39	FO10588		1	BODY CHANNEL CUP PLUG
40	F1977		1	STOP NUT, 8 - 32
41	FO8942		2	SHUTTER SCREW W/LOCKWASHER
42	FO16851		1	THROTTLE SHUTTER
43	FA85193		2	TIE BAR END W/SWIVEL

CONTINUED ON NEXT PAGE ➡

CARBURETOR

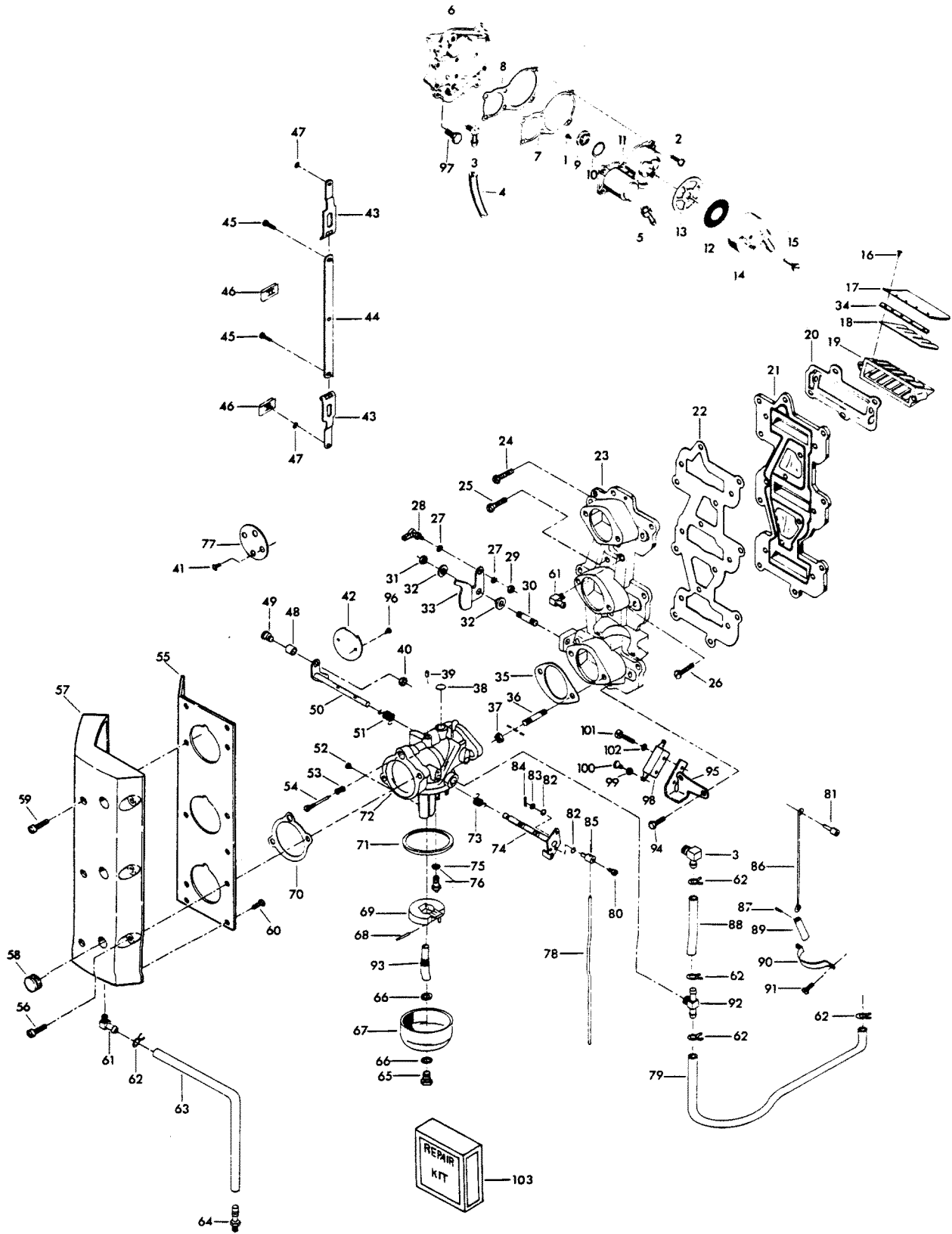


CARBURETOR

REF. NO.	PART NO.	SYM.	QTY.	DESCRIPTION
44	FA85511		1	THROTTLE BAR W/SWIVEL
45	F1064		2	FILL HD SCREWS, S.S., 8 - 32 X 3/8
46	F1693		2	TIE BAR RETAINER
47	F90807		3	RETAINING RING
48	F92759		1	THROTTLE ROLLER
49	F333316		1	THROTTLE ROLLER SHAFT
50	FO15230		1	THROTTLE SHAFT AND LEVER
51	FO16008		1	THROTTLE SHAFT RETURN SPRING
52	FO15026		1	MAIN FUEL JET (.072) STD. LEVEL - 1500 FT.
-	FO13430		-	MAIN FUEL JET (.070) OPT. 1500 FT. - 3000 FT.
-	FO13967		-	MAIN FUEL JET (.068) OPT. 3000 FT. - 4500 FT.
-	FO14188		-	MAIN FUEL JET (.066) OPT. 4500 FT. - 6000 FT.
-	FO14108		-	MAIN FUEL JET (.064) OPT. 6000 FT. & UP.
53	FO11103		1	IDLE SCREW SPRING
54	FO13946		1	IDLE SCREW
55	F481567		1	CARBURETOR INTAKE ADAPTER
56	F1504		3	FILL HD SCREW, 1/4 - 20 X 1/4
57	F481860-1		1	CARBURETOR, INTAKE
58	F53504		3	GROMMET
59	F1072		3	FILL HD SCREW, 1/4 - 20 X 1 3/4
60	F1760		6	PAN HD SCREW, 10 - 24 X 3/8
61	22-818103--1		2	ELBOW
62	F97772		6	HOSE CLAMP
63	F63754		1	HOSE INTAKE DRAIN
64	22-817789A1		1	DRAIN FITTING W/METERING CUP
65	FO13945		1	FUEL BOWL RETAINING SCREW
66	FO2510		2	GASKET, FUEL BOWL RETAINING SCREW
67	FO13552		1	FUEL BOWL
68	FO13944		1	FLOAT LEVER PIN
69	FO13554		1	FLOAT
70	F481836		3	INTAKE GASKET
71	FO15623		1	FUEL BOWL GASKET
72	F481061-2		3	CARBURETOR COMPLETE (WB-21C)
73	FO13947		1	CHOKE SHAFT RETURN SPRING
74	FO16850		1	CHOKE SHAFT AND LEVER
75	FO10165		1	INLET SEAT GASKET
76	FO10790		1	INLET NEEDLE, SEAT AND GASKET
77	FO13555		1	CHOKE SHUTTER
78	F85509-1		1	CHOKE LINK
79	F438754		1	FUEL LINE
80	F1059		3	FILL HD SCREWS, S.S., 6 - 32 X 1/4
81	F85033		1	CHOKE ROD SWIVEL
82	F184579		6	SEAL, CHOKE ARM SWIVEL

CONTINUED ON NEXT PAGE ➡

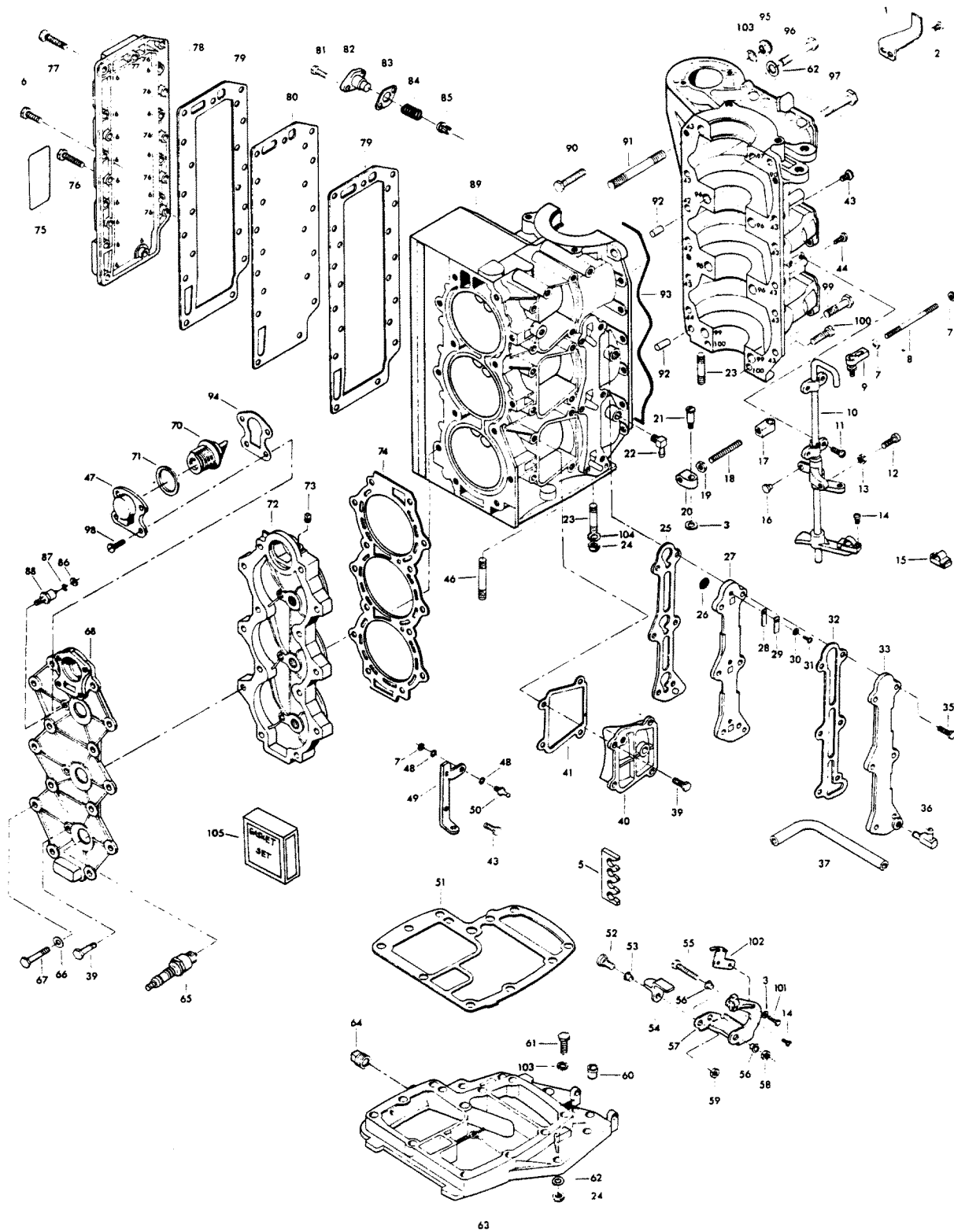
CARBURETOR



CARBURETOR

REF. NO.	PART NO.	SYM.	QTY.	DESCRIPTION
83	F8088		3	PLAIN WASHER
84	F1014		3	COTTER PIN
85	F184033-1		2	CHOKE ARM SWIVEL
86	F85925		1	CHOKE ROD
87	F2033		1	GROOVE PIN
88	F85253-1		2	FUEL LINE
89	F391926-1		1	CHOKE SOLENOID PLUNGER
90	F85317-1		1	CLAMP
91	F1545		2	HEX HD SCREW, 1/4 - 20 X 1/2
92	F85314-1		2	FUEL FITTING
93	FO15217		1	MAIN NOZZLE
94	F1532		3	HEX HD SCREW, 1/4 - 20 X 1
95	F480551-1		1	BRACKET INTERLOCK SWITCH
96	FO8942		2	THROTTLE SHUTTER SCREW AND LOCKWASHER
97	F1502		4	HEX CAP SCREW, 1/4 - 20 X 5/8
98	F84449		1	INTERLOCK SWITCH
99	F1704		2	INTERNAL TOOTH LOCKWASHER
100	F1645		2	RD HD SCREW, 6 - 32 X 1/4
101	F2016		2	FILL HD SCREW, 6 - 32 X 7/8
102	F8088		2	PLAIN WASHER
103	F10102		1	REPAIR PARTS KIT INCLUDES ALL ITEMS MARKED W\ AN ASTERISK *
-	F10000		1	GASKET SET (NOT SHOWN) UNDER 2ND FROM BOTTOM CENTER MANIFOLD TO CRANKCASE COVER SCREW.
-	F8026		1	PLAIN WASHER

POWER HEAD

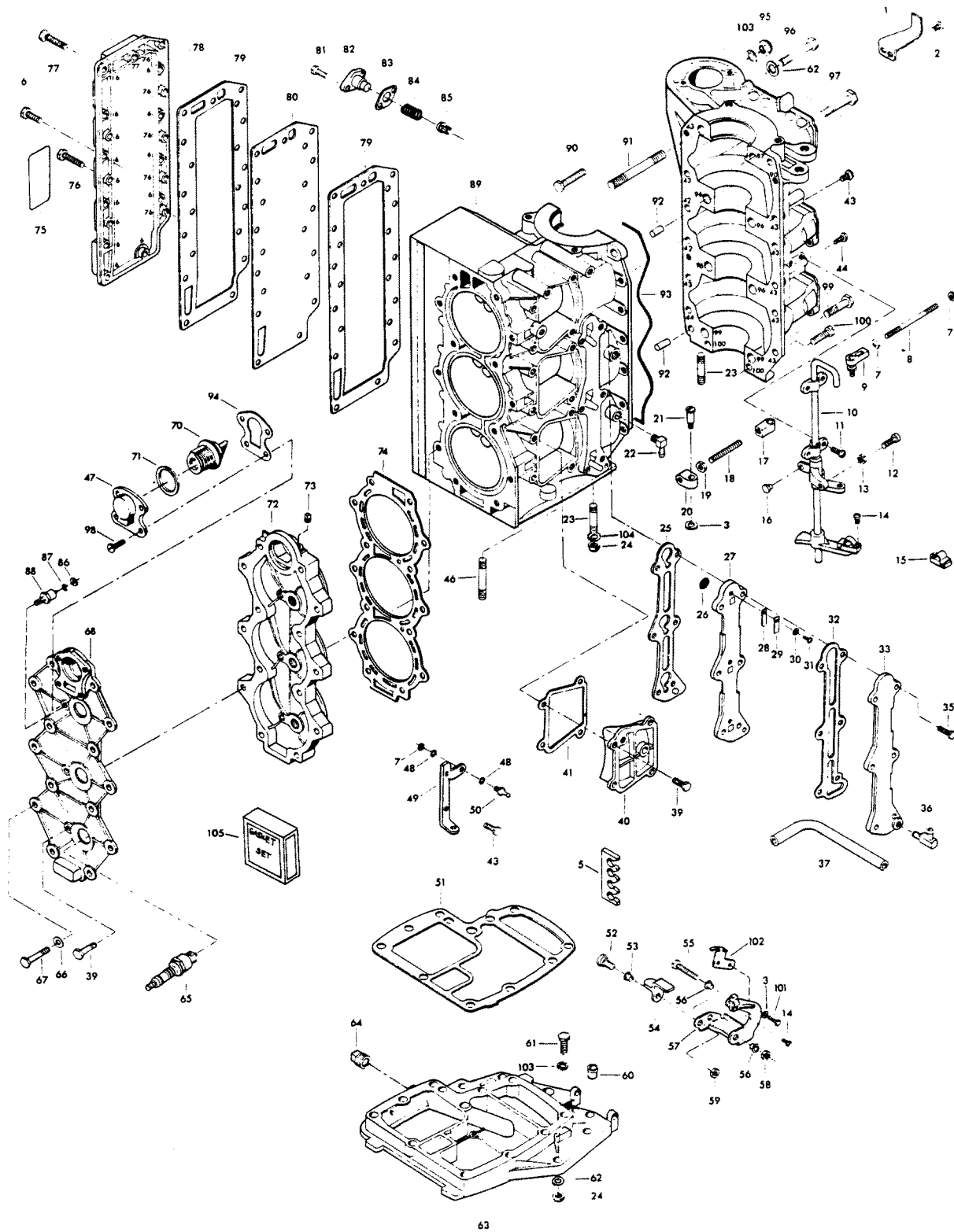


POWER HEAD

REF. NO.	PART NO.	SYM.	QTY.	DESCRIPTION
1	FA480894		1	TIMING POINTER W/ITEM 56 FROM PAGE 4
2	F1760		3	PLAIN WASHER
3	F2042		3	PLAIN WASHER
5	F523834		1	CLIP, SPARK PLUG WIRE
6	F1533		14	HEX BOLT, 1/4 - 20 X 7/8
7	F1513		4	HEX NUT, 10 - 32
8	F85502		1	THROTTLE LINK
9	817747--1		1	BALL JOINT W/STUD
10	FA85838-5		1	TOWERSHAFT W/BEARINGS, SWIVEL, ARMS AND SCREW
11	F1475		4	FILL HD SCREW, 10 - 24 X 1/2
12	F1504		1	FILL HD SCREW, 1/4 - 20 X 1/4
13	F1341		1	HEX NUT, 1/4 - 20
14	F1556		2	FILL HD SCREW W/LOCKWASHER, 10 - 24 X 3/8
15	FK405020		2	SWIVEL W/PIVOT SCREW AND NUT
16	F1727		1	PLASTIC RIVET
17	F85036		1	TOWERSHAFT CONTROL ROD END
18	F85445		1	DISTRIBUTOR CONTROL ROD
19	F2015		1	HEX NUT, 1/4 - 28
20	F85035		1	DISTRIBUTOR CONTROL ROD END
21	F85026		1	SWIVEL
22	F84314-2		1	ELBOW
23	F85859		4	STUD, FORWARD
24	F7004		10	STOP NUT, 3/18 - 16
25	F85748-2		1	GASKET, CYLINDER DRAIN REED PLATE
26	F93811		3	SCREEN
27	F2A404757		1	CYLINDER DRAIN REED PLATE W/REEDS, STOPS, METERING CUP AND SCREWS ORIGINAL FORCE P/N A 404757-1
28	F18160-2		3	REED
29	F93920		3	REED STOP
30	F8003		3	PLAIN WASHER
31	F1286		3	PAN HD SCREW, 4 - 40 X 3/16
32	F85472-2		1	GASKET, CYLINDER DRAIN COVER
33	817787A1		1	CYLINDER DRAIN COVER
35	F1532		6	HEX HD SCREW, 1/4 - 20 X 1
36	F404801		1	FITTING
37	F433253		1	HOSE
39	F1540		8	HEX HD SCREW, 1/4 - 20 X 5/8
40	FA411222		2	TRANSFER PORT COVER W/PLUG
41	F40223		3	GASKET, TRANSFER PORT COVER
42	F1534		2	HEX CAP SCREW, 1/4 - 20 X 7/8
43	F1532		10	HEX HD SCREW, 1/4 - 20 X 3/4
44	F1199		1	HEX CAP SCREW, 1/4 - 20 X 1
46	F85211		6	STUD, REAR

CONTINUED ON NEXT PAGE ➡

POWER HEAD

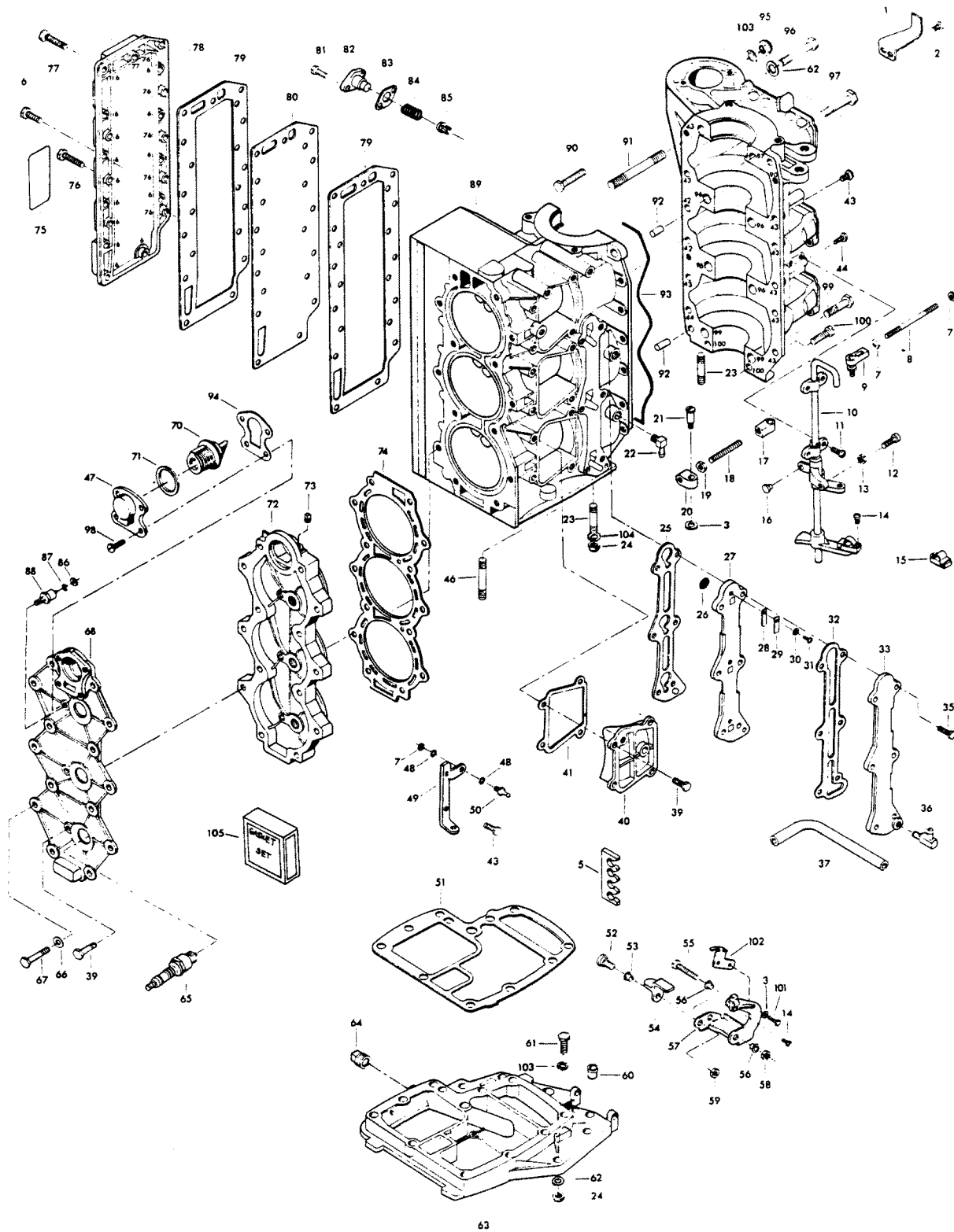


POWER HEAD

REF. NO.	PART NO.	SYM.	QTY.	DESCRIPTION
47	F476066-1		1	COVER, THERMOSTAT
48	F8058		4	INTERNAL TOOTH LOCKWASHER
49	85872-1		1	BRACKET
50	F98273		2	ROD END CONNECTOR STUD
51	F85279-2		1	CYLINDER EXHAUST GASKET, UPPER
52	F369887		1	SHOULDER SCREW
53	F369610		1	BEARING
54	F369977-1		1	INTERLOCK ARM
55	F1885		1	HEX BOLT, 5/16 - 18 X 4 1/4
56	F85610		2	BEARING
57	FA480876		1	GEAR SHIFT ARM W/SWIVEL, INTERLOCK ARM AND BEARINGS
58	F2108		1	STOP NUT, 5/16 - 18
59	F1832		1	STOP NUT, 1/4 - 20
60	F40689-1		1	BEARING, TOWERSHAFT
61	F1869		6	HEX BOLT, 3/8 - 16 X 1/4
62	F8095		14	PLAIN WASHER
63	817788A3		1	SPACER PLATE W/PLUGS
64	F2090		1	PLUG
65	33-97180		3	SPARK PLUG (CHAMPION L-20V)
66	F1087		14	PLAIN WASHER
67	F1883		14	HEX BOLT, 5/16 - 18 X 2 3/8
68	F499995		1	CYLINDER HEAD COVER
70	F528068		1	THERMOSTAT
71	F84504		1	GROMMET
72	F480518		1	CYLINDER HEAD
73	F19109		1	PLUG
74	F369529-1		1	CYLINDER HEAD GASKET
75	F438398		1	DECAL, WIRING
76	F1709		5	HEX HD SCREW, 1/4 - 20 X 1/8
77	F1708		1	HEX HD SCREW, 1/4 - 20 X 1 3/8
78	F85152-4		1	EXHAUST PORT COVER
79	F85154-1		2	GASKET, EXHAUST PORT PLATE
80	F85151-1		1	EXHAUST PORT PLATE
81	F1950		2	HEX HD SCREW, 10 - 24 X 5/8
82	F438066		1	BY-PASS VALVE COVER
83	F85762		1	GASKET, BY-PASS VALVE
84	F404268		1	SPRING, BY-PASS VALVE
85	F85916-1		1	BY-PASS VALVE
86	F1647		1	HEX NUT, 10 - 32
87	F8056		1	SPRING LOCKWASHER
88	87-817778A1		1	THERMOSWITCH WILLUS. #86, 87 ORIGINAL FORCE P/N A 335449-1

CONTINUED ON NEXT PAGE ➡

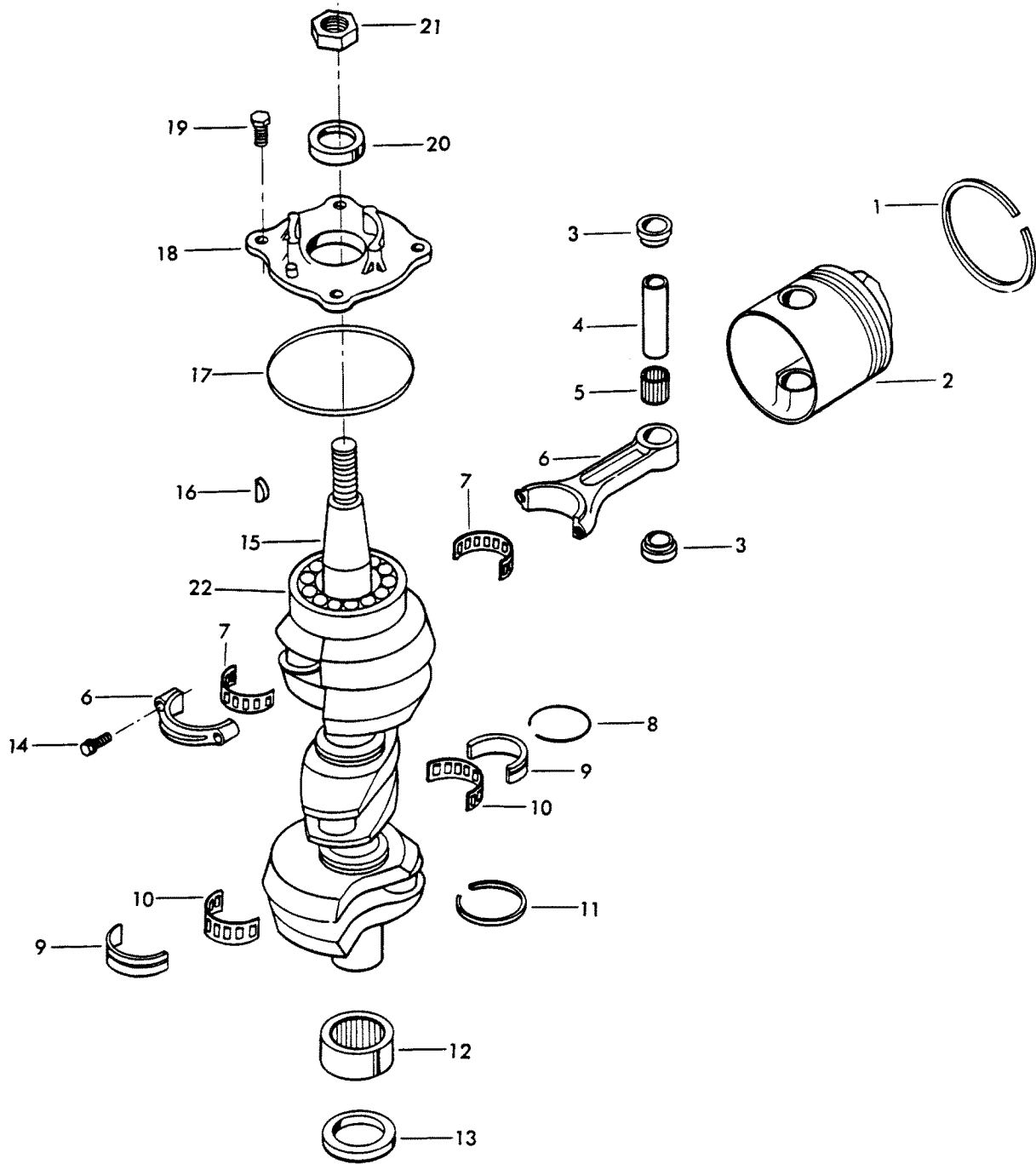
POWER HEAD



POWER HEAD

REF. NO.	PART NO.	SYM.	QTY.	DESCRIPTION
89	800-817823A7		1	CYLINDER W/CRANKCASE COVER, PARTING LINE SEAL, SCREWS & DOWEL PINS ORIGINAL FORCE P/N A 481010-4
-	800-817901A9		1	SHORT BLOCK (NOT SHOWN). INCLUDES ALL ITEMS MARKED WITH AN ASTERISK (*). ALSO REFER TO CRANKSHAFT AND PISTON PAGE. ORIGINAL FORCE P/N C 481010-4
90	F1535		1	HEX HD SCREW, 1/4 - 20 X 3/4
91	F85210		1	STUD
92	F8563		2	DOWEL PIN
93	F85122		1	PARTING LINE SEAL
94	F476067		1	GASKET, THERMOSTAT COVER
95	F1347		1	HEX NUT, 3/8 - 16
96	F1873		4	HEX BOLT, 3/8 - 16 X 3
97	F1009		1	HEX BOLT, 3/8 - 16 X 2 3/4
98	F1110		4	FILL HD SCREW, 1/4 - 20 X 5/8
99	F1872		2	HEX BOLT, 3/8 - 16 X 1 3/4
100	F1099		2	FILL HD SCREW, 1/4 - 20 X 1/4
101	F2089		2	SLOTTED PAN HD MACHINE SCREW, 10 - 24 X 5/16
102	F480107-1		1	CAM, STARTER INTERLOCK
103	F1703		6	SPRING LOCKWASHER
104	F8038		4	PLAIN WASHER
105	FG1020		1	GASKET SET
-	F40223		3	TRANSFER PORT COVER GASKET
-	F84278		1	CRANKSHAFT BRG. SEAL CAGE SEAL
-	F84504		1	THERMOSTAT GROMMET
-	F85122		1	CRANKCASE SEAL
-	F85154-1		2	EXHAUST PORT PLATE GASKET
-	F85159		1	MANIFOLD GASKET
-	F85168		3	CARBURETOR ADAPTER FLANGE GASKET
-	F85279-2		1	CYLINDER, EXHAUST - UPPER GASKET
-	F85472-2		1	CYLINDER DRAIN COVER GASKET
-	F85748-2		1	CYLINDER DRAIN REED PLATE GASKET
-	F85762		1	BY-PASS VALVE GASKET
-	F85906		3	CARBURETOR GASKET
-	F369529-1		1	CYLINDER HEAD GASKET
-	F476067		1	THERMOSTAT COVER GASKET
-	F481836		3	INTAKE GASKET

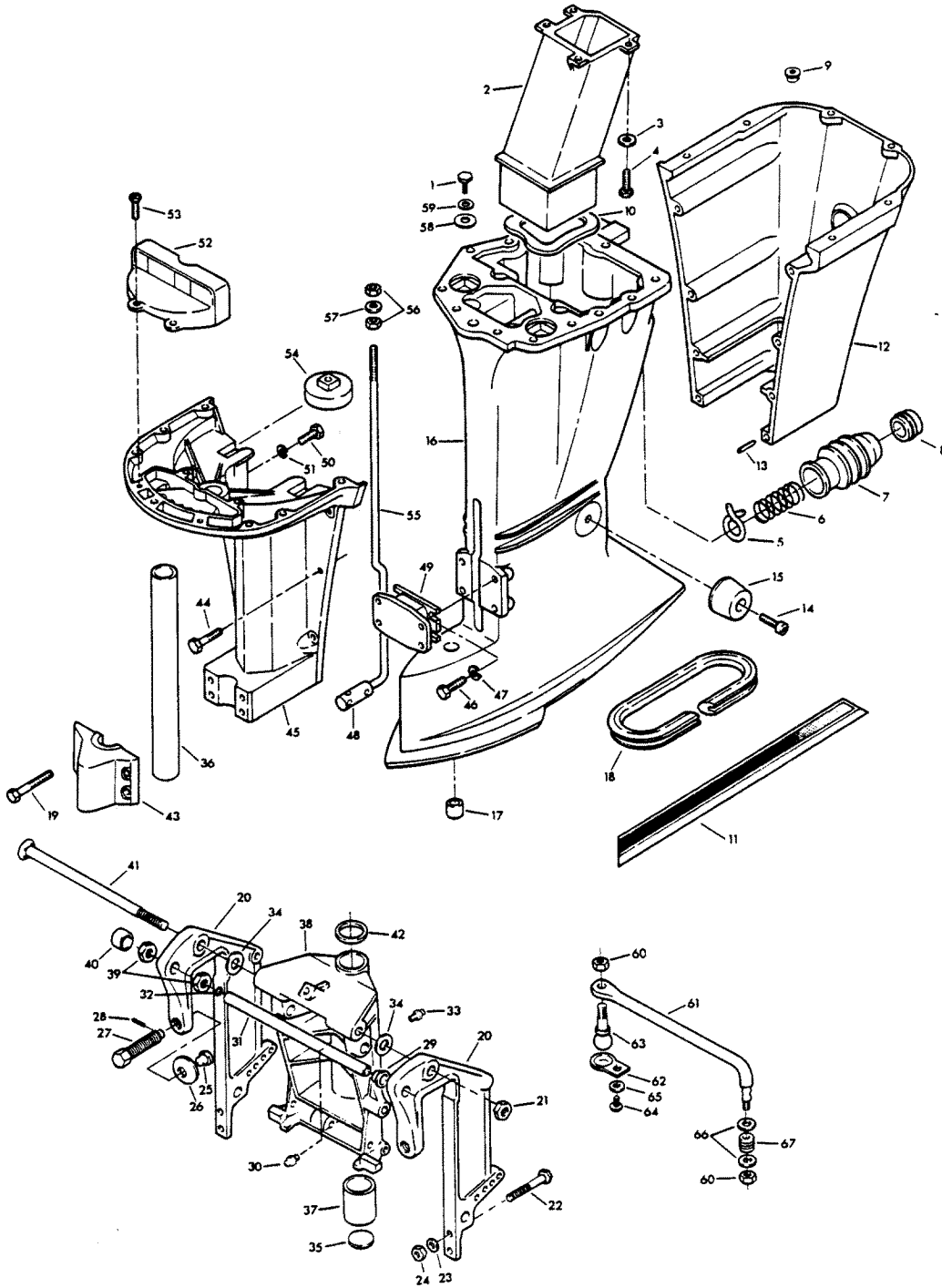
CRANKSHAFT AND PISTON



CRANKSHAFT AND PISTON

REF. NO.	PART NO.	SYM.	QTY.	DESCRIPTION
1	FA335260		3	PISTON RING SET (3 PER SET)
-	FSA335260		3	PISTON RINGS (3 PER SET) .010 OVERSIZE
-	39-818110A1		3	PISTON RINGS (3 PER SET) .030 OVERSIZE
2	700-F372015-3		3	PISTON
-	700-817988A2		3	PISTON .010 OVERSIZE
-	700-818111A2		3	PISTON .030 OVERSIZE
3	F335215		6	SPACER, PISTON PIN (2 PER PISTON)
4	F85017		3	PISTON PIN
5	F335217-1		3	BEARING PISTON PIN (26 PER SET)
6	600-818052A4		3	CONNECTING ROD W/CAP AND SCREWS
7	FK85228-1		3	BEARING CAGE W/ROLLER
8	F85410		2	SNAP RING
9	FA85655-1		2	CRANKSHAFT MAIN BEARING RACE W/SNAP RING
10	F85571		2	BEARING CAGE W/ ROLLER
11	F316579		2	SEAL, CRANKCASE
12	FA523014		1	CRANKSHAFT LOWER MAIN BEARING W/ SEAL
13	F523146		1	SEAL, CRANKSHAFT LOWER
14	F85634-2		6	CONNECTING ROD SCREW
15	FA550018		1	CRANKSHAFT W/BEARING
16	F85498		1	FLYWHEEL KEY
17	F84278		1	SEAL, CRANKSHAFT BEARING CAGE
18	31-817785A2		1	CRANKSHAFT BEARING CAGE W/SEAL
19	F1867		4	HEX CAP SCREW, 3/8 - 16 X 1
20	F84146-2		1	SEAL
21	F1968		1	FLYWHEEL NUT
22	F284659-2		1	CRANKSHAFT THRUST BEARING UPPER
-	F2067		1	PLASTISOL CAP (NOT SHOWN) FOR EXPOSED THREADS OF CRANKSHAFT

MOTOR LEG

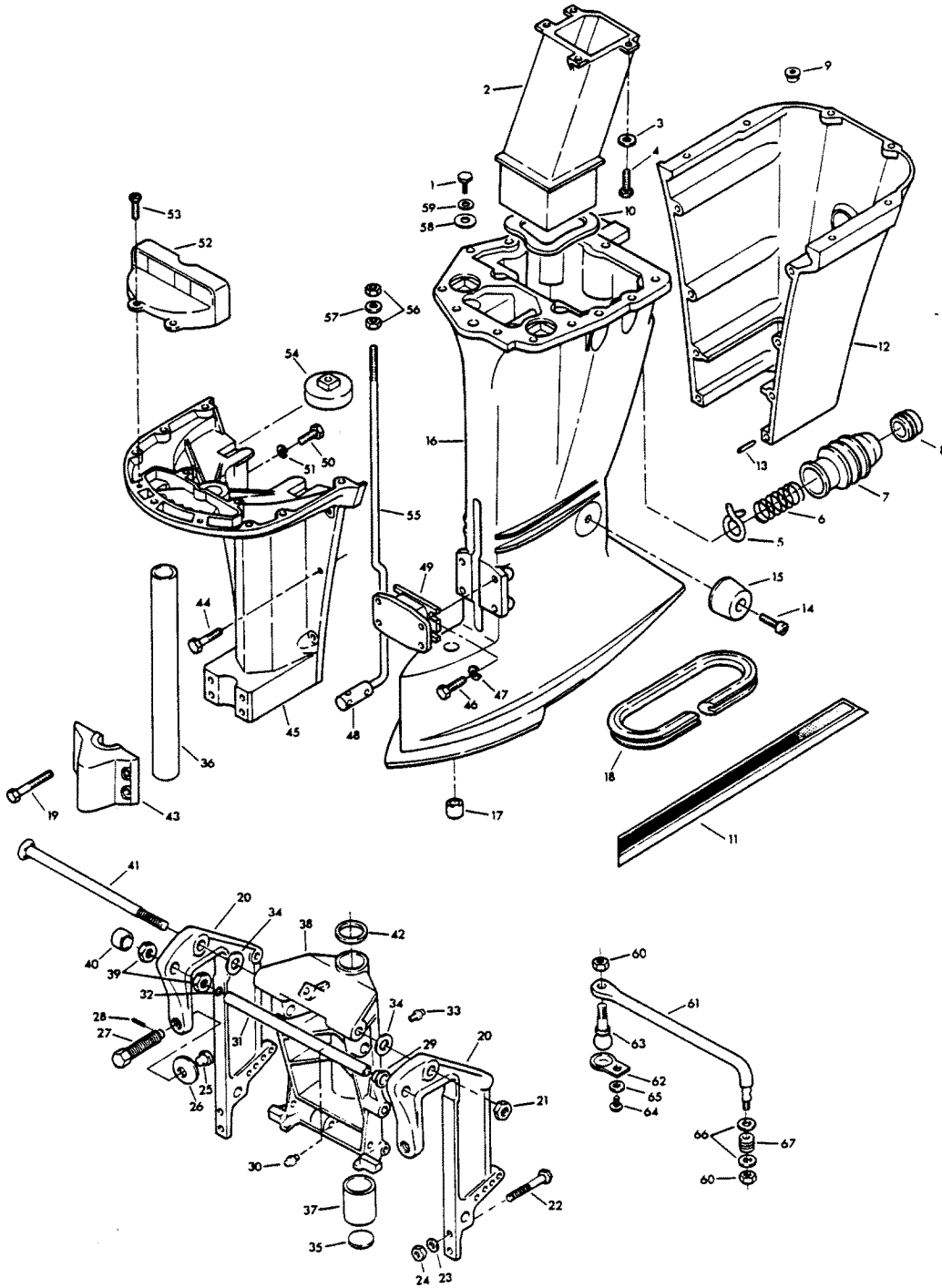


MOTOR LEG

REF. NO.	PART NO.	SYM.	QTY.	DESCRIPTION
1	F1871		2	HEX HD SCREWS, 3/8 - 16 X 3/4
2	F85660-1		1	EXHAUST TUBE
3	F8083		4	SPRING LOCKWASHER
4	F1864		4	HEX SLOT HD. SCREW, 1/4 - 20 X 3/4
5	F85772		1	CLAMP
6	F85380		1	SPRING
7	F85130		1	BOOT, IDLE EXHAUST
8	F85258		1	INSERT
9	F1729		2	PLUG
10	F439736		1	SEAL, EXHAUST TUBE
11	A584392		1	DECAL, LEG (PORT)
-	A584391		1	DECAL, LEG (STARBOARD)
12	817931A7		1	MOTOR LEG COVER, REAR
13	F1664		2	SPRING PIN
14	F1263		2	HEX SOCKET HD CAP SCREW, 5/16 - 18 X 9/16
15	F438962		2	SHOCK MOUNT SIDE
16	F550133		1	MOTOR LEG
17	F338618-1		1	SEAL, GEAR SHIFT ROD
18	F178323		1	SEAL, MOTOR LEG
19	F1696		4	HEX BOLT, 5/16 - 18 X 1 3/4
20	1400-817958A6		2	STERN BRACKET
21	F7012		1	LOCK NUT, 1/2 - 20
22	F1593		2	HEX HD SCREW, 3/8 - 16 X 3
23	F1004		2	PLAIN WASHER
24	F1346		2	HEX NUT, 3/8 - 16
25	F353480		2	STUD
26	F84074		2	CLAMP SCREW FOOT
27	F474073-1		2	CLAMP SCREW
28	F8538		2	SPRING PIN
29	F9052		1	PLUG
30	F523274		1	GREASE FITTING
31	F511125-2		1	TUBE, STEERING SUPPORT
32	F316599		1	SEAL, STEERING SUPPORT TUBE
33	F213274		3	GREASE FITTING
34	F84286-1		4	FRICTION WASHER
35	F1528		1	WELCH PLUG
36	FA85019		1	KINGPIN W/PLUG
37	F438169		2	BEARING
38	817783A5		1	SWIVEL BRACKET W/BEARING AND GREASE FITTINGS
39	F523280		2	NUT, STEERING SUPPORT TUBE
40	F9018		1	CAP
41	F85037-1		1	STERN BRACKET PIVOT BOLT
42	F84011		1	WASHER

CONTINUED ON NEXT PAGE ➡

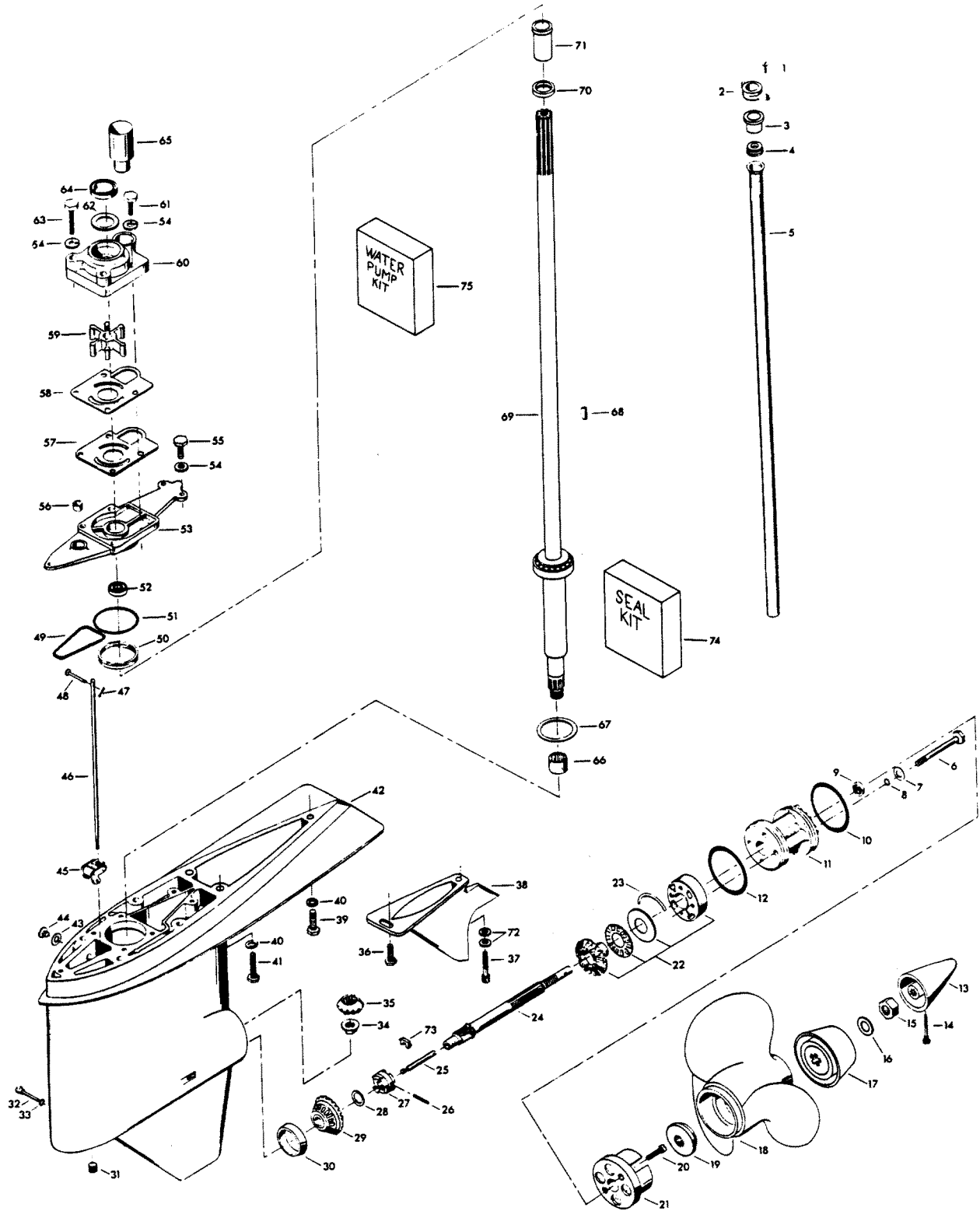
MOTOR LEG



MOTOR LEG

REF. NO.	PART NO.	SYM.	QTY.	DESCRIPTION
43	F85606		1	KINGPIN CAP
44	F2030		6	HEX HD SCREW, 1/4 - 20 X 1/4
45	A3		1	LEG COVER, FRONT
46	F1822		4	HEX BOLT, 5/16 - 18 X 7/8
47	F8096		4	SPRING LOCKWASHER
48	F550704		1	COUPLER, GEARSHIFT ROD UPPER
49	F550346		1	SHOCK MOUNT, LOWER
50	F1871		2	HEX HD SCREW, 3/8 - 16 X 3/4
51	F1703		2	SPRING LOCKWASHER
52	F85779-1		1	BAFFLE, AIR INTAKE
53	F1912		4	HEX HD SCREW, 10 - 24 X 1/2
54	F85965		2	SHOCK MOUNT, UPPER
55	F550615		1	GEAR SHIFT ROD UPPER
56	F2108		2	LOCK NUT, 5/16 - 18
57	F1987		1	PLAIN WASHER
58	FA85355-1		2	WASHER, SHOCK MOUNT UPPER W/ITEM 59
59	F8039		2	PLAIN WASHER
60	F2093		2	STOP NUT, 3/8 - 24
61	F523881-1		1	STEERING LINK
62	F523930		1	RETAINER
63	F523273		1	STEERING BALL STUD
64	F1280		1	PAN HD SCREW, 8 - 32 X 1/4
65	F8080		1	SPRING LOCKWASHER
66	F8038		2	PLAIN WASHER
67	F523300-1		1	SPRING
68	FOB2603		1	INSTALLATION INSTRUCTIONS (5H094 STEERING LINK KIT)

GEAR HOUSING

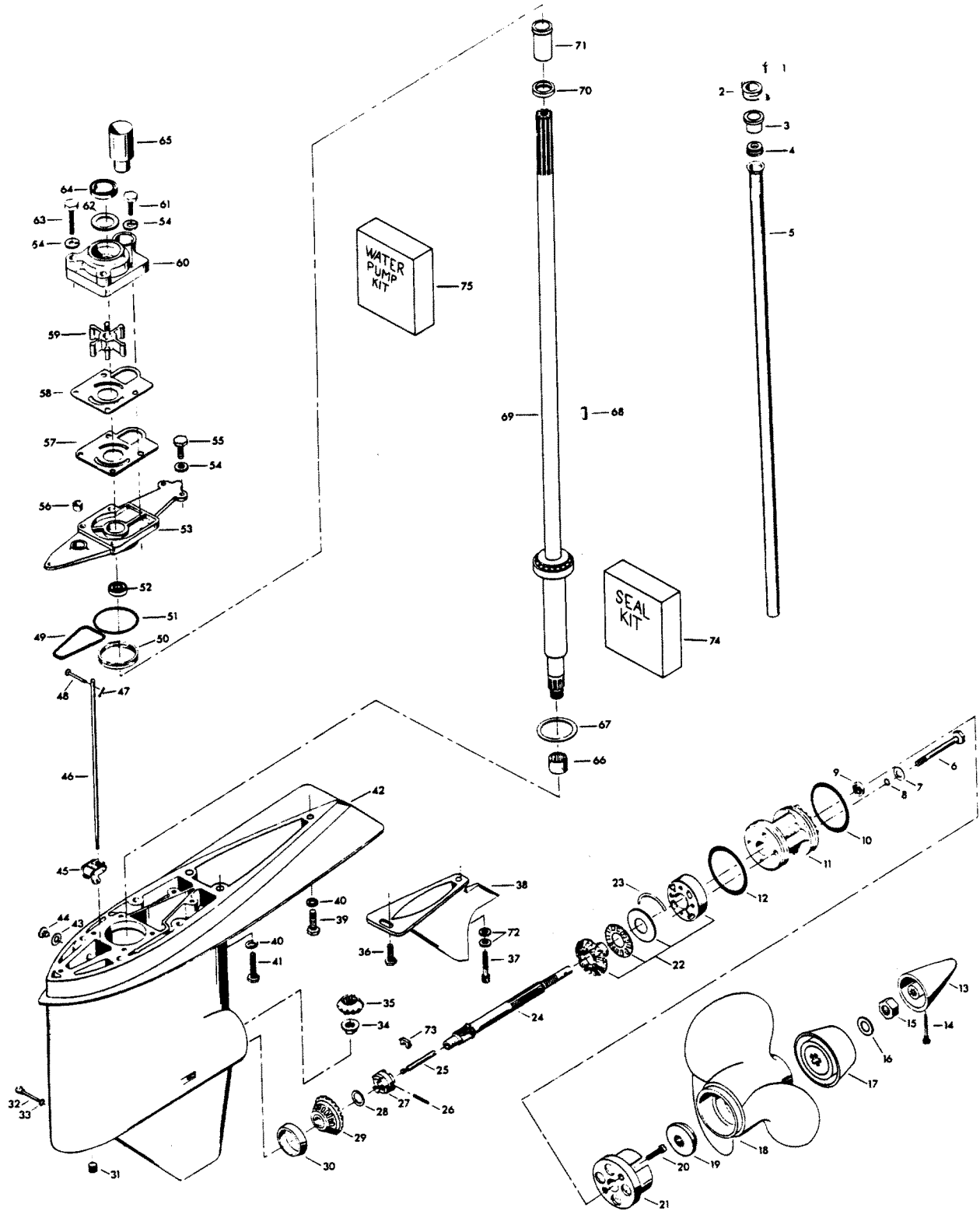


GEAR HOUSING

REF. NO.	PART NO.	SYM.	QTY.	DESCRIPTION
1	F1705		2	HEX CAP SCREW, 1/4 - 20 X 3/4
2	F85117		1	BRACKET, WATER LINE
3	F84342		1	SEAL, INLET WATER LINE UPPER
4	F523899		1	GROMMET, WATER LINE
5	F550244		1	INLET WATER LINE
6	F1885		4	HEX CAP SCREW, 5/16 - 18 X 4 1/4
7	F1907		4	PLAIN WASHER
8	F50342-1		4	SEAL, BEARING CAGE BOLTS
9	F506118		1	SEAL, PROPELLER SHAFT
10	F24278		1	SEAL, "O" RING PROPELLER SHAFT SPOOL
11	F2A523239		1	SPOOL, PROPELLER SHAFT BEARING W/SEALS
12	F84305		1	SEAL, PROPELLER SHAFT BEARING SPOOL
13	F523094-2		1	PROPELLER NUT
14	F498891		1	PIN, PROPELLER NUT RETAINING
15	F1788		1	STOP NUT
16	F1866		1	PLAIN WASHER
17	F532299		1	WASHER, PROPELLER SPLINE
18	FP524		1	PROPELLER, (ACCESSORY ITEM)
19	F523099-1		1	SPACER, PROPELLER
20	F1577		2	FILL HD SCREW, 1/4 - 20 X 3/4
21	FA523485		1	ANTI-CORROSION ANODE
22	F2A498662		1	BEVEL GEAR REAR W/BEARING CAGE, SPACER AND BEARING
23	F523411		2	RETAINING RING
24	FA523098		1	PROPELLER SHAFT
25	F84871-1		1	PIN, GEAR SHIFT
26	F1713		1	SPRING PIN
27	F84521-1		1	CLUTCH
28	F1936		A/R	SPACER, BEVEL GEAR FRONT .059
-	F1937		A/R	SPACER, BEVEL GEAR FRONT .062
-	F1938		A/R	SPACER, BEVEL GEAR FRONT .065
-	F1939		A/R	SPACER, BEVEL GEAR FRONT .068
-	F1940		A/R	SPACER, BEVEL GEAR FRONT .071
-	F1941		A/R	SPACER, BEVEL GEAR FRONT .074
-	F1942		A/R	SPACER, BEVEL GEAR FRONT .077
-	F2113		A/R	SPACER, BEVEL GEAR FRONT .080
-	F2114		A/R	SPACER, BEVEL GEAR FRONT .083
-	F2115		A/R	SPACER, BEVEL GEAR FRONT .086
-	F2116		A/R	SPACER, BEVEL GEAR FRONT .089
-	F2121		A/R	SPACER, BEVEL GEAR FRONT .057
-	F2122		A/R	SPACER, BEVEL GEAR FRONT .054
29	F2A498023		1	BEVEL GEAR FRONT W/BEARING
30	F523813		1	BEARING CUP

CONTINUED ON NEXT PAGE ➡

GEAR HOUSING

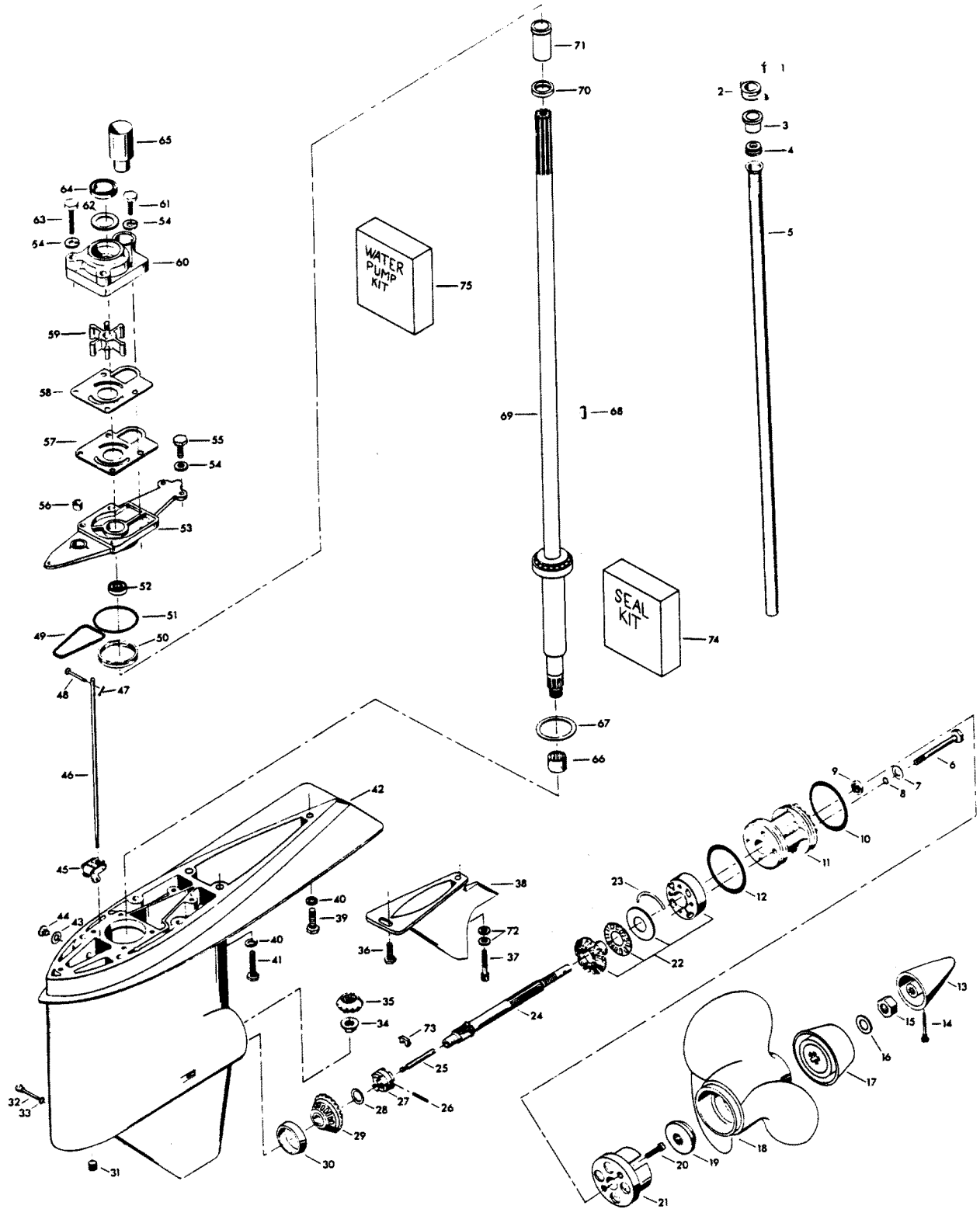


GEAR HOUSING

REF. NO.	PART NO.	SYM.	QTY.	DESCRIPTION
31	F19109		1	PLUG, GEAR HOUSING
32	F498891		1	PIN, GEAR SHIFT ARM
33	F498618		1	SEAL
34	F523188		1	NUT, BEVEL PINION RETAINING
35	FA498266		1	BEVEL PINION GEAR W/CRUSH RING AND SHIMS
36	F438930		1	RETAINER, SNOOT
37	F1994		1	HEX SOCKET HD CAP SCREWS, 5/16 - 18 X 1
38	F523116		1	EXHAUST SNOOT
39	F1858		1	HEX CAP SCREW, 5/16 18 X 1
40	F8096		7	SPRING LOCKWASHER
41	F1491		6	HEX CAP SCREW, 5/16 - 18 X 3 1/4
42	FA523054		1	GEAR HOUSING W/BEARING CUP DRIVESHAFT BEARING LOWER, PLUGS AND WASHERS
-	FC584054		1	GEAR HOUSING COMPLETE. INCLUDES ALL ITEMS MARKED WITH AN ASTERISK (*).
43	F8077		2	WASHER, GEAR HOUSING PLUG
44	F50109		2	PLUG, GEAR HOUSING
45	FA84621-1		1	COUPLING, GEAR SHIFT ARM W/BUSHING
46	F550705		1	GEAR SHIFT ROD LOWER
47	F1015		1	COTTER PIN
48	F85372		1	PIN, GEAR SHIFT ROD LOWER
49	F523555		1	SEAL, "O" RING - GEAR HOUSING COVER
50	F523961		1	CRUSH RING
51	F74305		1	SEAL, DRIVESHAFT BEARING CAGE
52	F506118		1	SEAL, DRIVESHAFT
53	F2A550706		1	GEAR HOUSING COVER W/SEAL
54	F8083		7	SPRING LOCKWASHER
55	F1534		3	HEX CAP SCREW, 1/4 - 20 X 7/8
56	F338618-1		1	SEAL, GEAR SHIFT ROD
57	F523031		1	GASKET, WATER PUMP
58	F523562		1	WATER PUMP BACK PLATE
59	F523065		1	WATER PUMP IMPELLER
60	46-817853A1		1	WATER PUMP BODY W/DRIVESHAFT SEAL, DISC AND WATER LINE SEAL
61	F1990		2	HEX CAP SCREW, 1/4 - 20 X 1 5/8
62	F480388		1	DISC, WATER PUMP LOCATING
63	F1425		2	HEX CAP SCREW, 1/4 - 20 X 2 5/8
64	F351307		1	SEAL, WATER PUMP
65	FA523735		1	SEAL, INLET WATER LINE LOWER W/LITERATURE
66	F523057		1	BEARING, DRIVESHAFT LOWER
67	F9106		A/R	SHIM, DRIVESHAFT BEARING UPPER .003 - BRASS
-	F9095		A/R	SHIM, DRIVESHAFT BEARING UPPER .005 - SILVER
-	F9097		A/R	SHIM, DRIVESHAFT BEARING UPPER .010 - BLACK
68	F523498		1	DRIVE KEY, WATER PUMP

CONTINUED ON NEXT PAGE ➡

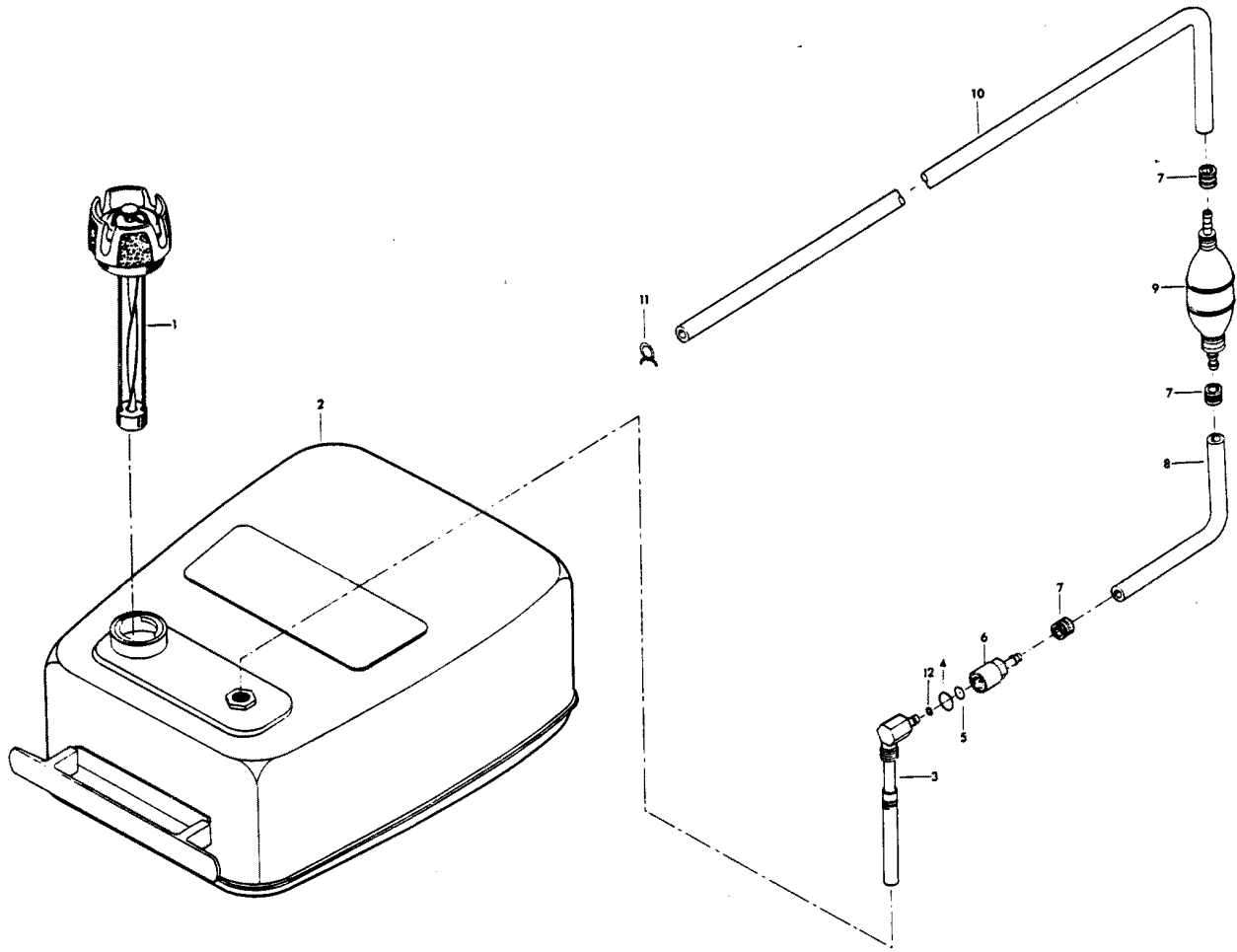
GEAR HOUSING



GEAR HOUSING

REF. NO.	PART NO.	SYM.	QTY.	DESCRIPTION
69	FK551128		1	DRIVESHAFT W/BEARING, SHIMS AND CRUSH RING
70	F438271		1	RETAINER, CRANKSHAFT SPLINE SEAL
71	F438129		1	SEAL, DRIVESHAFT SPLINE
72	F1836		2	PLAIN WASHER
73	F90619-1		1	YOKE
74	FK1063		1	SEAL KIT
-	F50342-1		4	BEARING CAGE BOLT SEAL
-	F506118		1	PROPELLER SHAFT SEAL
-	F24278		1	PROPELLER SHAFT SPOOL SEAL
-	F84305		1	PROPELLER SHAFT SPOOL SEAL
-	F498618		1	GEAR SHIFT ARM PIN SEAL
-	F8077		2	WASHER
-	F523555		1	GEAR HOUSING COVER SEAL
-	F74305		1	GEAR HOUSING COVER SEAL
-	F84307-1		1	DRIVESHAFT SEAL
-	F338618-1		1	GEAR SHIFT ROD SEAL
75	FK1069		1	WATER PUMP KIT
-	F1425		2	HEX CAP SCREW, 1/4 - 20 X 5/8
-	F1990		2	HEX CAP SCREW
-	F8083		4	SPRING LOCKWASHER
-	F523031		1	GASKET, WATER PUMP
-	F523065		1	IMPELLER
-	F523498		1	KEY
-	F523562		1	PLATE, WATER PUMP
-	46-817853A1		1	WATER PUMP

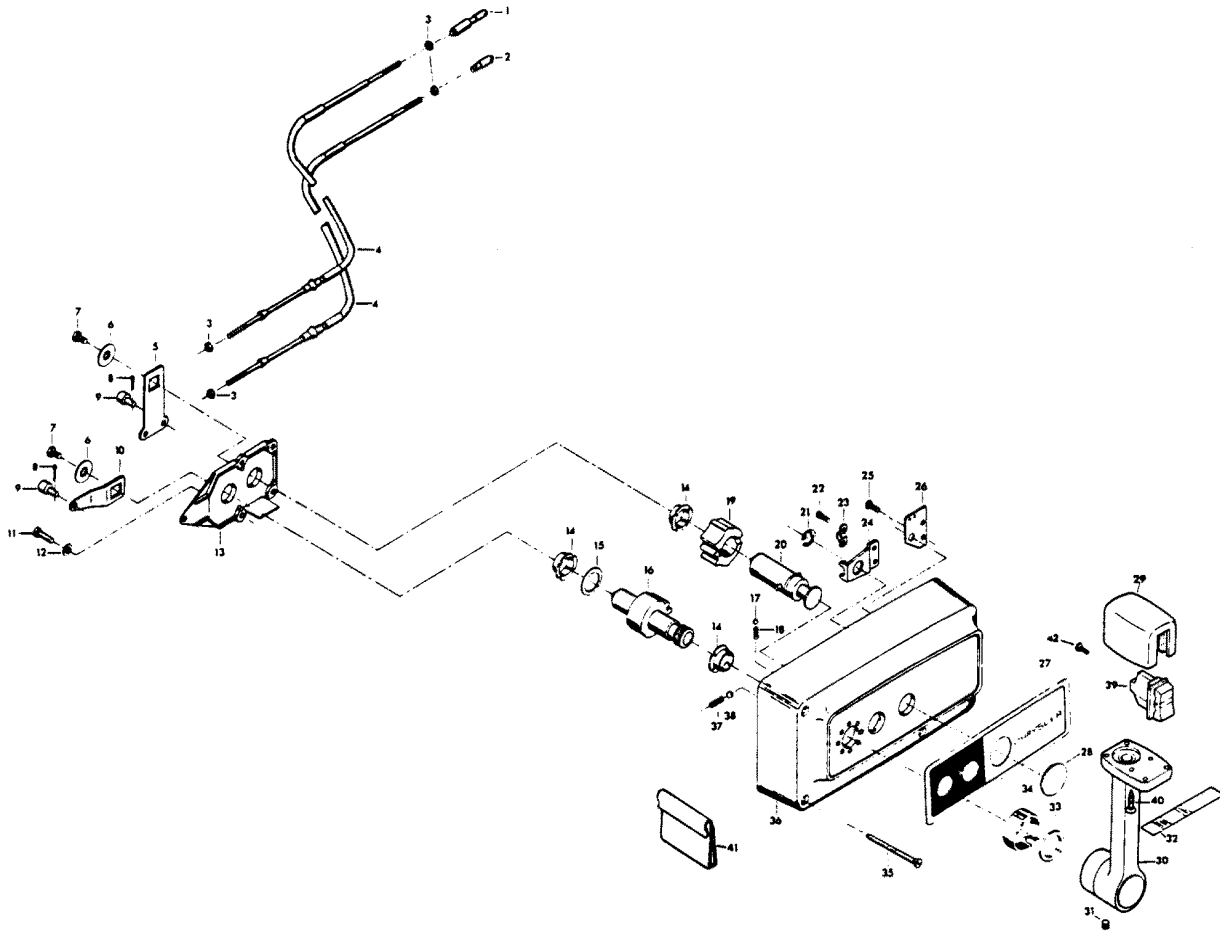
FUEL TANK AND LINE



FUEL TANK AND LINE

REF. NO.	PART NO.	SYM.	QTY.	DESCRIPTION
1	F409251-1		1	GAUGE CAP
2	F5H026		1	FUEL TANK (ACCESSORY ITEM)
3	F485755-1		1	FUEL TANK ADAPTER
4	F213342		1	SEAL, FUEL LINE COUPLER (LARGE)
5	F213735		1	SEAL, FUEL LINE COUPLER (SMALL)
6	F197787-3		1	FUEL LINE COUPLER
7	F298788		3	FERRULE
8	FA84754-1		1	FUEL LINE SHORT W/FERRULES
9	89396A38		1	PRIME BULB
10	32-817738A1		1	FUEL LINE LONG W/CLAMP AND FERRULE
11	F97772		1	FUEL LINE CLAMP
12	F17932		1	SEAL, FUEL TANK ADAPTER
-	FS409752		1	FUEL LINE COMPLETE

REMOTE CONTROL

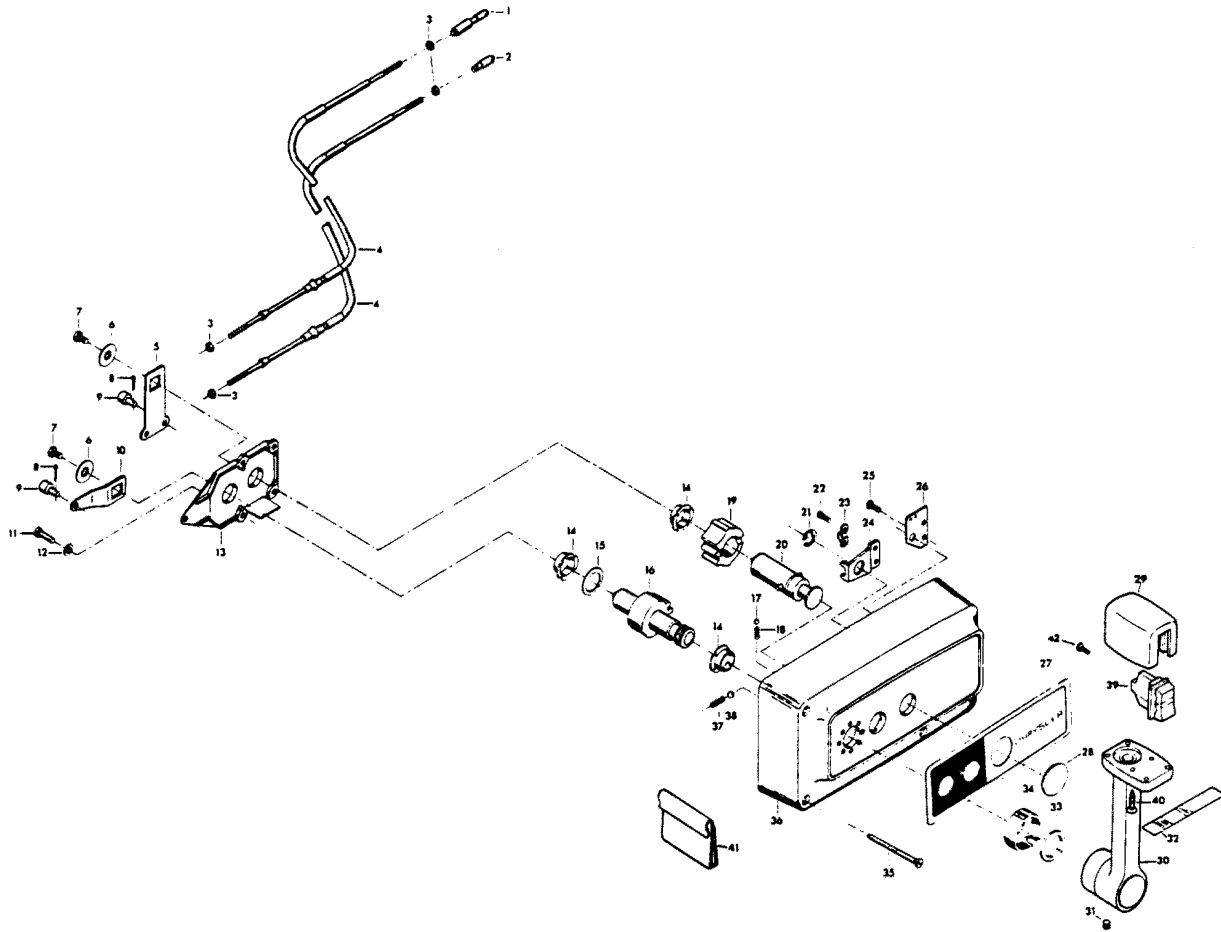


REMOTE CONTROL

REF. NO.	PART NO.	SYM.	QTY.	DESCRIPTION
1	FA58976-1		1	CONNECTOR, THROTTLE CABLE
2	F58685-2		1	CONNECTOR, SHIFT CABLE
3	F1513		4	HEX NUT
4	ÄF58356//		2	REMOTE CONTROL CABLE (SPECIFY LENGTH)
5	F17019		1	CLUTCH ARM
6	F17036		2	INTERNAL TOOTH LOCKWASHER
7	F1715		2	HEX BOLT, 1/4 - 28 X 9/16
8	F17149		2	COTTER PIN
9	F17016		2	CABLE TERMINAL
10	F17014		1	THROTTLE ARM
11	F17013		2	FILL HD SCREW, 1/4 - 20 X 1/2
12	F17147		2	INTERNAL TOOTH LOCKWASHER
13	F17012		1	RETAINING PLATE
14	F17009		3	BEARING
15	F17011		1	BOWED WASHER
16	F17010-1		1	THROTTLE GEAR
17	F17111		1	DETENT BALL
18	F17006		1	DETENT SPRING
19	F17021		1	CLUTCH GEAR
20	F17100		1	CLUTCH SHAFT
21	F17092		1	SNAP RING
22	F17071		2	FILL HD SCREW, 10 - 24 X 5/16
23	F154317		1	CABLE CLAMP
24	F17026		1	SWIVEL
25	F1557		2	FLAT HD SCREW, 10 - 24 X 3/8
26	F17112		1	JUNCTION BOARD, STARBOARD
-	F17113		1	JUNCTION BOARD, PORT
27	F17148		1	DECAL, STARBOARD
-	F531892		1	DECAL, PORT
28	F17031-1		1	SNAP CAP
29	F448543		1	KNOB
30	F448611-1		1	HANDLE
31	F455690		1	SET SCREW
32	F449894		1	INDICATOR - STARBOARD
-	F448894		1	INDICATOR - PORT
33	F17105		1	FELT WASHER
34	F17106		1	COLLAR
35	F17146		3	WOOD SCREW
36	F17099-1		1	HOUSING
37	F17068		1	DETENT SPRING
38	F17082-1		1	DETENT BALL
39	F455449		1	SWITCH, TRIM
40	F1461		2	SCREW #6 X 7/8

CONTINUED ON NEXT PAGE ➡

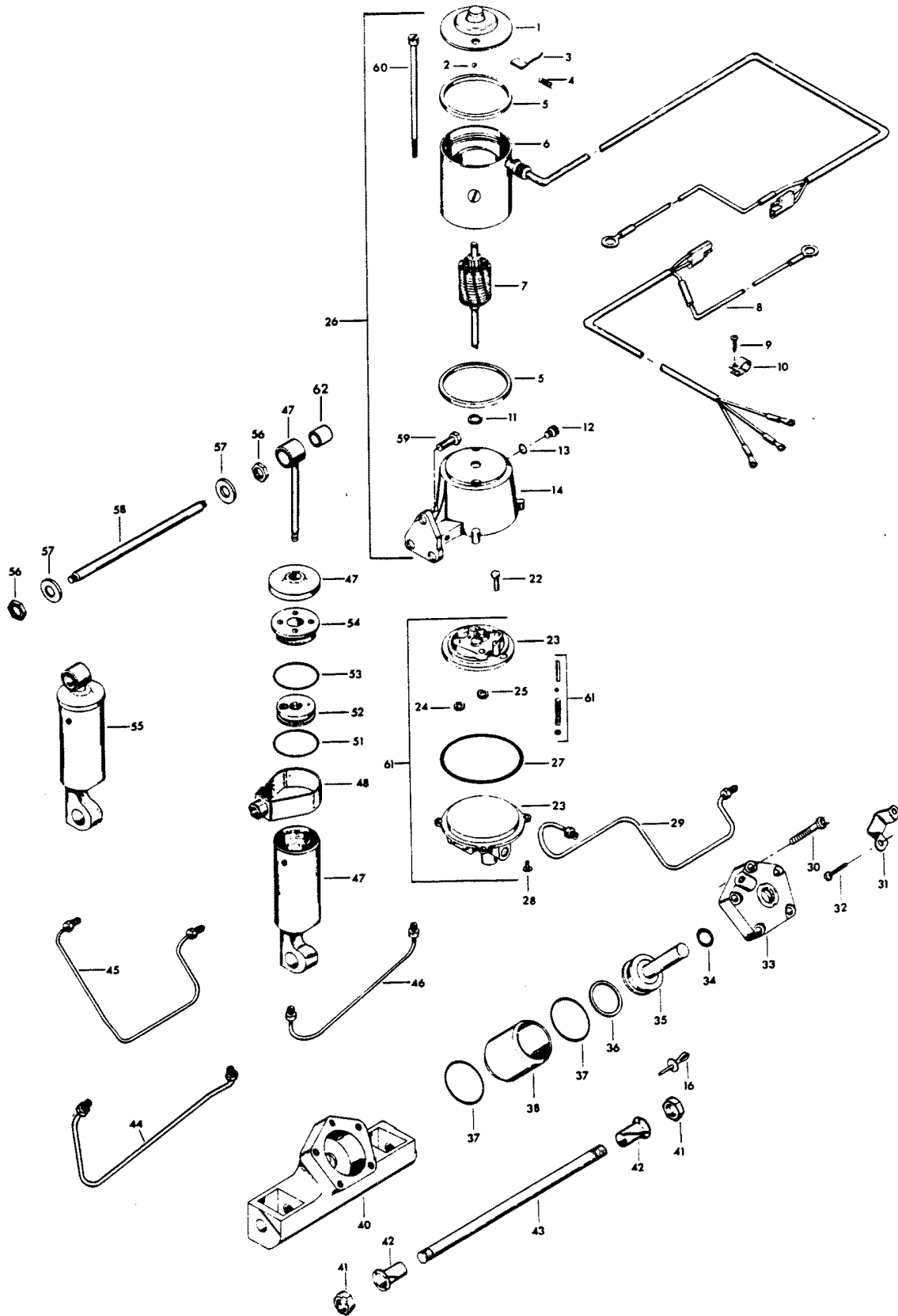
REMOTE CONTROL



REMOTE CONTROL

REF. NO.	PART NO.	SYM.	QTY.	DESCRIPTION
41	F448446		1	CLAMP, TRIM SWITCH CABLE
-	F1280		2	PAN HD SCREW, 8 - 32 X 1/4 (TERMINAL BOARD) (NOT SHOWN)
-	OB3061		1	LITERATURE (NOT SHOWN) INSTALLATION INSTRUCTIONS FOR REMOTE CONTROL)
-	F17103-1		1	BAG ASSEMBLY (NOT SHOWN) INCLUDES ITEMS MARKED WITH AN ASTERISK (*).
42	F1280		3	PAN HD SCREW, 8 - 32 X 1/4

POWER TRIM UNIT

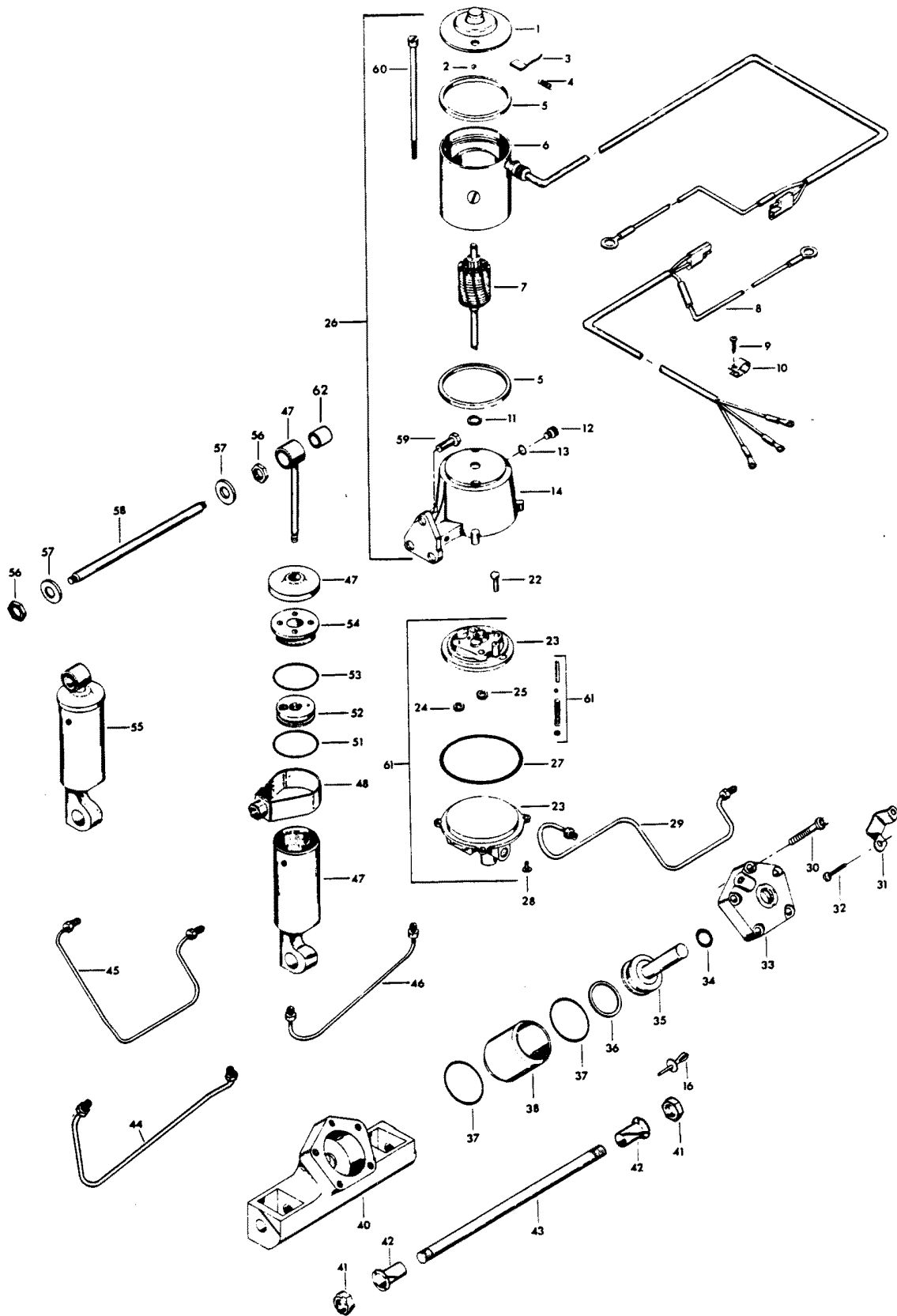


POWER TRIM UNIT

REF. NO.	PART NO.	SYM.	QTY.	DESCRIPTION
1	F17543		1	HEAD ASSEMBLY, COMMUTATOR END
2	F17539		1	BALL
3	F17504		1	BRUSH SET
4	F17500		1	SPRING SET
5	F17557		2	GASKET
6	F17556		1	FIELD AND FRAME ASSEMBLY
7	F17555		1	ARMATURE
8	F500843		1	CABLE
9	F1741		2	THREAD FORMING SCREW, 8 X 3/4
10	F178446		2	CLAMP
11	F17508		A/R	THRUST WASHER
12	F17518		1	FILTER CAP
13	F17510		1	"O" RING
14	F17505		1	RESERVOIR AND BRACKET W/SEAL
15	F1966		1	PLUG, SWIVEL BRACKET
22	F1203		1	HEX CAP SCREW, 1/4 - 20 X 7/8
23	F17564		1	VALVE BODY AND PUMP
24	F17566		1	IDLE GEAR
25	F17565		1	DRIVE GEAR
26	F17563		1	MOTOR AND RESERVOIR
27	F17522		1	"O" RING
28	F1310		4	ROUND HD SCREW, 10 - 24 X 5/8
29	F449254		1	HYDRAULIC LINE, TRIM CYLINDER, UPPER
30	F1959		5	FERRY HD CAP SCREW, 1/4 - 20 X 1 3/4, STAINLESS STEEL
31	F449354		1	THRUST BRACKET
32	F1734		2	FILL HD MOUNTING SCREW AND LOCKWASHER, 1/4 - 20 X 1/2
33	FA449149		1	COVER W/SEALS AND RETAINER
34	F449342		1	SEAL, PISTON SHAFT
35	FA449015		1	PISTON
36	F449278		1	PISTON SEAL
37	F40278		2	SEAL, CYLINDER
38	F449010		1	CYLINDER
40	F449545-2		1	CYLINDER HOUSING
41	F1963		2	ELASTIC STOP NUT, 5/8 - 18
42	F178362		2	BEARING
43	F449632		1	SHAFT
44	F449253-1		1	HYDRAULIC LINE, TRIM CYLINDER, LOWER
45	F449758		1	HYDRAULIC LINE, LIFT CYLINDER, UPPER
46	F449754-1		1	HYDRAULIC LINE, LIFT CYLINDER, LOWER
47	FA17559		1	LIFT CYLINDER COMPLETE
48	F17577		1	ADAPTER FITTING PACKAGE
49	F17577		1	ADAPTER FITTING PACKAGE

CONTINUED ON NEXT PAGE ➡

POWER TRIM UNIT



POWER TRIM UNIT

REF. NO.	PART NO.	SYM.	QTY.	DESCRIPTION
50	F17577		1	ADAPTER FITTING PACKAGE
51	F17561-1		1	"O" RING
52	F17562-1		1	PISTON ASSEMBLY
53	F17523		1	"O" RING
54	F17560		1	HEAD ASSEMBLY
55	FA178962		1	SHOCK ABSORBER W/BUSHING
56	F1931		2	STOP NUT, 1/2 - 20, STAINLESS STEEL
57	F1960		2	PLAIN WASHER
58	F449889		1	SHAFT, UPPER
59	F1822		3	HEX CAP SCREW, 5/16 - 18 X 7/8, STAINLESS STEEL
60	F17558		1	THRU-BOLT PACKAGE
61	F17568		1	HYDRAULIC PUMP AND VALVE ASSEMBLY
-	F1877		2	TY-RAP (NOT SHOWN)
62	F178344		2	BUSHING, SHOCK ABSORBER UPPER

SPECIAL TOOLS - TUNE-UP

REF. NO.	PART NO.	SYM.	QTY.	DESCRIPTION
-	FT8948-1		0	PULLER TO REMOVE FLYWHEEL.
-	FTA2937-1		0	TIMING TOOL TO ADJUST TIMING POINTER.
-	FT8978		0	TIMING LIGHT FOR SETTING IGNITION TIMING.

SPECIAL TOOLS - POWER HEAD

REF. NO.	PART NO.	SYM.	QTY.	DESCRIPTION
-	FT8914		0	SEAL REMOVER TO REMOVE UPPER CRANKSHAFT BEARING CAGE SEAL.
-	FT8903		0	SEAL INSTALLER TO INSTALL UPPER CRANKSHAFT BEARING CAGE SEAL.
-	FT8927		0	SEAL PROTECTOR TO INSTALL UPPER CRANKSHAFT BEARING CAGE.
-	FT8925		0	SEAL INSTALLER TO INSTALL LOWER CRANKSHAFT SEAL.
-	FT8907		0	DRIVE HANDLE USED WITH T8903.
-	FT2990		0	PISTON PIN TOOL TO REMOVE AND INSTALL PISTON PINS.
-	FT2996		0	RING COMPRESSOR TO INSTALL PISTONS IN CYLINDER.
-	FT8926		0	RING EXPANDER TO INSTALL PISTON RINGS.
-	FT1082		0	SNAP RING PLIER TO REMOVE AND INSTALL DISTRIBUTOR RETAINING RING.
-	FT8933		0	LIFTING HOOK TO LIFT ENGINE.

SPECIAL TOOLS - GEAR HOUSING

REF. NO.	PART NO.	SYM.	QTY.	DESCRIPTION
-	FT8948-1		0	PULLER TO REMOVE SPOOL FROM GEAR HOUSING.
-	FT8918		0	BEARING GUIDE SET TO REMOVE AND INSTALL BEARING CUP IN GEAR HOUSING.
-	FT11209		0	BEARING GUIDE SET USE WITH T8918.
-	FT11204		0	BEARING CUP INSTALLER TO INSTALL FORWARD BEARING CUP IN GEAR HOUSING.
-	FT8957		0	SEAL INSTALLER TO INSTALL SHIFT ROD SEAL.
-	FT3012		0	SEAL INSTALLER TO INSTALL WATER PUMP SEAL.
-	FT8997		0	SHIMMING TOOL SET TO OBTAIN PROPER GEAR CLEARANCE AND PROP SHAFT END FLOAT.
-	FT8985		0	SEAL INSTALLER TO INSTALL PROPELLER SHAFT, BEARING SPOOL.
-	FT11205		0	BEARING INSTALLER/REMOVER TO INSTALL AND REMOVE LOWER DRIVE SHAFT BEARING IN GEAR HOUSING.
-	FT8925		0	SEAL INSTALLER TO INSTALL DRIVESHAFT SEAL IN GEAR HOUSING.
-	FT8907		0	DRIVER HANDLE TO INSTALL BEARING CUPS AND SEALS.
-	FT8901		0	INDICATOR HOLDER USED IN CONJUNCTION WITH T8997.
-	FT8902		0	DIAL INDICATOR USED IN CONJUNCTION WITH T8997.
-	FT8919		0	SPRING PIN PUNCH TO REMOVE CLUTCH SPRING PIN.
-	FT7848		0	TORQUING ADAPTER HOLDS DRIVESHAFT WHILE INSTALLING OR REMOVING PINION NUT.

SPECIAL TOOLS - TEST EQUIPMENT

REF. NO.	PART NO.	SYM.	QTY.	DESCRIPTION
-	FTK8999		0	TEST WHEEL TO TEST MOTOR IN TEST TANK. ORIGINAL FORCE P/N TA 8999
-	FT8950		0	LEAKAGE TESTER TO TEST LOWER UNIT SEALS FOR LEAKAGE.
-	FT8953		0	IGNITION TESTER TO TEST OUTPUT OF C-D UNIT.
-	FT8978		0	TIMING LIGHT FOR SETTING IGNITION TIMING.

SPECIAL TOOLS - LUBRICANTS AND SEALANTS

REF. NO.	PART NO.	SYM.	QTY.	DESCRIPTION
-	FT2961		0	LUBRICANT - RYKON #2EP
-	FT2987-1		0	LUBRICANT - ANTI-SEIZE
-	FT8969		0	LUBRICANT - 7 OZ. 2 PSI LUBRICANT
-	FT8955		0	SEALANT - 5 OZ. EC-750 INDUSTRIAL SEALANT
-	FT8993		0	SEALANT - 3 OZ. RTV SEALANT FROM IN PLACE GASKETS
-	FT8936		0	SEALANT - 2 CC LOCTITE RETAINING COMPOUND #75
-	FT2962-1		0	SEALANT - 50 CC LOCTITE H, NON-HARDENING GRADE
-	FT2963-1		0	SEALANT - 2 OZ. LOCTITE D, HARDENING GRADE
-	FT8935		0	SEALANT PRIMER - 6 OZ.

SPECIAL TOOLS - DECAL REPAIR SHEETS

REF. NO.	PART NO.	SYM.	QTY.	DESCRIPTION
-	T11211		0	BOAT WHITE REPAIR DECALS ON ENGINE COVERS.
-	T11230		0	ORANGE REPAIR DECALS ON ENGINE COVERS.
-	T11212		0	BOAT BLACK REPAIR DECALS ON ENGINE COVERS.

ACCESSORIES

REF. NO.	PART NO.	SYM.	QTY.	DESCRIPTION
-	F5H014		0	FLUSHING ADAPTER PERMITS FRESH WATER FLUSHING OF WATER PASSAGES WITH STANDARD GARDEN HOSE.
-	F5H130		0	REMOTE CONTROL BOX (SINGLE LEVER) PERMITS REMOTE CONTROL OF THROTTLE AND GEAR SHIFT FROM STARBOARD SIDE OF BOAT.
-	F5H131		0	PORT SIDE DECAL KIT CONVERTS 5H130 CONTROL BOX TO PORT SIDE MOUNTING.
-	F590		0	REMOTE CONTROL HEAD (SINGLE LEVER) FLUSH MOUNT CONTROL UNIT PERMITS REMOTE CONTROL OF THROTTLE AND GEAR SHIFT. MAY BE MOUNTED ON PORT OR STARBOARD SIDE OF BOAT.
-	865		0	DUAL SINGLE LEVER CONTROL PERMITS REMOTE CONTROL OF THROTTLE AND GEAR SHIFT ON TWIN ENGINE INSTALLATIONS. MAY BE MOUNTED ON PORT STARBOARD SIDE OF BOAT.
-	F195/___		0	REMOTE CONTROL CABLES CONNECTS REMOTE CONTROL BOX TO THROTTLE AND GEAR SHIFT ON ENGINE. AVAILABLE IN 6 THROUGH 40 FOOT LENGTHS.
-	F5H094		0	STEERING LINK KIT CONNECTS ENGINE TO REMOTE STEERING.
-	F5H018		0	DUAL ENGINE TIE BAR PERMITS DUAL ENGINE INSTALLATIONS.
-	F5H026		0	STEEL, 6 GALLON FUEL TANK (LOW PROFILE) AUXILIARY TANK.
-	F5H029		0	TANK ANCHOR SECURES 5H026 TO BOAT.
-	F5H040		0	STEEL, 12 GALLON FUEL TANK AUXILIARY TANK.
-	F5H019		0	ANTI-CORROSION KIT ELECTRICAL KIT FOR MOUNTING ON BOAT (12V) TO REDUCE CORROSION.
-	F5H025		0	ANTI-CORROSION SACRIFICIAL ANODE KIT USED TO REDUCE CORROSION.
-	F5H043		0	OVERHEAT BUZZER SOUNDS WARNING BUZZER IF ENGINE OVERHEATS.
-	F5H010		0	POWER TRIM INDICATOR INDICATES ENGINE TRIM ANGLE. (FLUSH MOUNT).
-	F5H134		0	BOAT WHITE LACQUER ENGINE TOUCH-UP PAINT IN 12 3/4 OZ. SPRAY BOMBS (6 CANS PER CASE).
-	F5H003		0	SPEEDOMETER FLUSH MOUNT MONITORS BOAT SPEED (0-100 KM/H).
-	F5H030		0	SWITCH KIT - RUNNING LIGHTS DASH MOUNTED TOGGLE SWITCH.
-	F5H031		0	SWITCH KIT - SPOT LIGHT DASH MOUNTED TOGGLE SWITCH.
-	F5H032		0	SWITCH KIT - WIPER DASH MOUNTED TOGGLE SWITCH.
-	F5H034		0	SWITCH KIT - BILGE PUMP DASH MOUNTED TOGGLE SWITCH.
-	F5H035		0	SWITCH KIT - HORN DASH MOUNTED TOGGLE SWITCH (MOMENTARY).
-	F5H036		0	SWITCH KIT - TACHOMETER TRANSFER DASH MOUNTED TOGGLE SWITCH FOR ONE TACHOMETER ON DUAL ENGINE INSTALLATION.

CONTINUED ON NEXT PAGE ➡

ACCESSORIES

REF. NO.	PART NO.	SYM.	QTY.	DESCRIPTION
-	F5H038		0	SWITCH KIT - IGNITION SWITCH TO MOUNT IGNITION SWITCH ON DASH.
-	F5H039		0	SWITCH KIT - INSTRUMENT LIGHT DASH MOUNTED TOGGLE SWITCH.
-	479		0	UNIMOUNT UNDER DASH MOUNT FOR INDICATORS, LAMPS AND IGNITION SWITCHES.
-	F5H075		0	WIRING HARNESS - IGNITION SWITCH (24") USE WITH 563 TERMINAL BLOCK.
-	F5H068		0	RFI SUPPRESSION KIT PROVIDES RADIO NOISE SUPPRESSION.
-	F5H081		0	BATTERY CABLE LONGER LENGTH - 15 FEET.
-	71H06		0	AMMETER FLUSH MOUNT MONITORS OUTPUT OF ALTERNATOR.
-	F5H006		0	VOLTMETER - FLUSH MOUNT INDICATES BATTERY CONDITION.
-	71H25		0	CHARGE MONITOR LAMP INDICATES ALTERNATOR OUTPUT.
-	5H047		0	CANVAS HOOD PROTECTION FOR ENGINE COVER.
-	5H051		0	BATTERY, 74 AMP 12 VOLT HEAVY DUTY BATTERY.
-	F5H021		0	EXTENSION CABLE FOR LENGTHENING BATTERY CABLE 6 1/2 FEET.
-	F5H041		0	BATTERY TERMINAL KIT ADAPTS MODEL 5H051 BATTERY TERMINALS FOR CONNECTIONS TO BATTERY CABLE ON ENGINE.
-	F5H037		0	CIGAR LIGHTER FOR USE AS CONVENIENCE OUTLET.
-	168		0	CONTROL PANEL FOR MOUNTING LAMPS, SWITCHES, ETC.
-	F5H008		0	FUEL GAUGE FLUSH MOUNT MONITORS FUEL SUPPLY.
-	F5H077		0	IGNITION KEY SWITCH SHORT BARREL WITH KEYS.
-	F5H078		0	IGNITION KEY SWITCH LONG BARREL WITH KEYS.
-	478		0	IGNITION LAMP INDICATES WHEN IGNITION SWITCH IS "ON".
-	F762		0	REMOTE ELECTRIC CABLE 25 FOOT CABLE FOR LARGER BOATS.
-	5H082		0	REMOTE ELECTRIC CABLE 35 FOOT CABLE FOR LARGE BOATS.
-	F5H119		0	PROPELLER SPACER - FLARED REDUCES PROPELLER VENTILLATION.
-	F5H070		0	REMOTE ELECTRIC CABLE 21 FOOT CABLE FOR LARGE BOATS.
-	F5H007		0	HOURMETER - FLUSH MOUNT RECORDS ENGINE RUNNING TIME.
-	F5H028		0	SENDING UNIT FOR USE WITH 5H008 FUEL GAUGE.
-	F5H005		0	TEMPERATURE GAUGE FLUSH MOUNT MONITORS ENGINE TEMPERATURE. DO NOT USE TEMPERATURE GAUGE AND HEAT LAMP IN SAME INSTALLATION.
-	479		0	OVERHEAT LAMP KIT WARNS OF ENGINE OVERHEATING.
-	F5H012		0	TACHOMETER FLUSH MOUNT MONITORS ENGINE R.P.M. TO PROVIDE CHECK OF ENGINE PERFORMANCE.
-	F5H004		0	SPEEDOMETER FLUSH MOUNT MONITORS BOAT SPEED (0 - 50 M.P.H.).

CONTINUED ON NEXT PAGE ➡

ACCESSORIES

REF. NO.	PART NO.	SYM.	QTY.	DESCRIPTION
-	F5H002		0	SPEEDOMETER FLUSH MOUNT MONITORS BOAT SPEED (0 - 65 M.P.H.).
-	5H111		0	INSTRUMENT ADAPTER - 2" PROVIDES SURFACE MOUNTING OF 2" INSTRUMENTS.
-	F5H112		0	INSTRUMENT ADAPTER - 3 1/2" PROVIDES SURFACE MOUNTING OF 3 1/2" INSTRUMENTS.
-	F5H120		0	REMOTE CONTROL BACK PLATE PROTECTS CONTROL MECHANISM FROM PADDED BOAT SURFACES.
-	F5H108		0	STEERING CONNECTOR CLEVIS TYPE FOR BOAT MOUNTED STEERING AND NONTHREADED CABLE END.
-	F5H076		0	SWITCH EXTENSION CABLE 5' ALLOWS INSTALLATION OF IGNITION SWITCH IN 5H130 CONTROL BOX WITH 563 TERMINAL BLOCK.
-	F563		0	TERMINAL BLOCK KIT DOUBLE ROW 10 SECTION TO SIMPLIFY ACCESSORY INSTALLATION.
-			0	CHRYSLER OUTBOARD OIL SEE BLOCK COMMENT 1.
-			0	CHRYSLER OUTBOARD GEAR LUBE SEE BLOCK COMMENT 2.
-			0	CHRYSLER OUTBOARD FUEL AID REMOVES MOISTURE, PREVENTS SLUDGE AND VARNISH AND STABILIZES GAS. AVAILABLE IN 16 OZ. CANS AND 12 CAN CASES.
-			0	CHRYSLER OUTBOARD STORAGE LUBRICANT WORKS AS A CORROSION INHIBITOR AND PROTECTS INTERNAL ENGINE PARTS DURING STORAGE. AVAILABLE IN 16 OZ. CANS AND 12 CAN CASES.
-			0	CHRYSLER OUTBOARD MULTI-PURPOSE SPRAY LUBE WORKS AS A LUBRICANT, CLEANER, MOISTURE REMOVER AND ELECTRIC INSULATOR. AVAILABLE IN 9 OZ. CANS AND 12 CAN CASES.
-			0	CHRYSLER OUTBOARD MULTI-PURPOSE GREASE LUBRICATES BEARINGS AND OTHER MOVING PARTS. AVAILABLE IN 8 OZ. TUBES AND 12 TUBE CASES.
-			0	CHRYSLER OUTBOARD GREASE GUN USED WITH CHRYSLER OUTBOARD MULTI-PURPOSE GREASE TUBES FOR PRESSURE FITTINGS.
-			0	CHRYSLER OUTBOARD MULTI-PURPOSE CLEANER

PARTS INDEX

Part Number	Description	Pg.	Ref. No.	Part Number	Description	Pg.	Ref. No.
ÄF58356//	REMOTE CONTROL CABLE (SPECIFY LENGTH)	41	4	F1199	HEX CAP SCREW, 1/4 - 20 X 1	21	44
15169	FRAME AND FIELD ASSEMBLY	9	9	F1203	HEX CAP SCREW, 1/4 - 20 X 7/8	45	22
168	CONTROL PANEL	55	-	F1263	HEX SOCKET HD CAP SCREW, 5/16 - 18 X 9/16	29	14
3C584944	ENGINE COVER COMPLETE	3	-	F1280	PAN HD SCREW, 8 - 32 X 1/4	5	33
478	IGNITION LAMP	55	-	F1280	PAN HD SCREW, 8 - 32 X 1/4	31	64
479	OVERHEAT LAMP KIT	55	-	F1280	PAN HD SCREW, 8 - 32 X 1/4	43	42
479	UNIMOUNT	55	-	F1280	PAN HD SCREW, 8 - 32 X 1/4 (TERMINAL BOARD) (NOT SHOWN)	43	-
480373	DECAL, MAGNAPOWER IGNITION	7	55	F1286	PAN HD SCREW, 4 - 40 X 3/16	21	31
481373-1	DECAL, "ELECTRONIC" (NOT SHOWN)	13	-	F1310	ROUND HD SCREW, 10 - 24 X 5/8	45	28
5H047	CANVAS HOOD	55	-	F1341	HEX NUT, 1/4 - 20	21	13
5H051	BATTERY, 74 AMP	55	-	F1346	HEX NUT, 3/8 - 16	29	24
5H082	REMOTE ELECTRIC CABLE	55	-	F1347	HEX NUT, 3/8 - 16	25	95
5H111	INSTRUMENT ADAPTER - 2"	56	-	F14006-2	CAP BASE	11	37
71H06	AMMETER FLUSH MOUNT	55	-	F14007	CAP SCREW	11	33
71H25	CHARGE MONITOR LAMP	55	-	F14011-1	CAP COVER	11	34
817747--1	BALL JOINT W/STUD	15	28	F14012-1	BRUSH	11	39
817747--1	BALL JOINT W/STUD	21	9	F14015	CAP CLIP RIVET	11	21
817783A5	SWIVEL BRACKET W/BEARING AND GREASE FITTINGS	29	38	F14017	TERMINAL INSULATOR (OUTSIDE)	13	46
817786A1	DISTRIBUTOR PULLEY	11	3	F14020-1	CAP SEAL	11	36
817787A1	CYLINDER DRAIN COVER	21	33	F14024	SPACER	11	42
817788A3	SPACER PLATE W/PLUGS	23	63	F14025	SPACER	11	4
817822A1	DISTRIBUTOR COMPLETE	13	-	F14028	THRUST WASHER	11	5
817931A7	MOTOR LEG COVER, REAR	29	12	F14029	THRUST WASHER	11	7
817959A3	INTAKE MANIFOLD	15	23	F14030	CAP GASKET	11	38
85872-1	BRACKET	23	49	F14036	SWIVEL	11	13
865	DUAL SINGLE LEVER CONTROL	54	-	F14037	CAP CLIPS	11	14
89396A38	PRIME BULB	39	9	F14038	CAP CLIP SCREWS	11	15
A3	LEG COVER, FRONT	31	45	F14040	VENT	11	35
A584391	DECAL, LEG (STARBOARD)	29	-	F14041	EXTERNAL TOOTH LOCKWASHER	11	23
A584392	DECAL, LEG (PORT)	29	11	F14042	DISTRIBUTOR HOUSING W/BEARINGS	11	12
F10000	GASKET SET (NOT SHOWN)	19	-	F14043	DISTRIBUTOR SHAFT	11	40
F1004	PLAIN WASHER	29	23	F14045	SCREW	11	16
F1009	HEX BOLT, 3/8 - 16 X 2 3/4	25	97	F14046	TERMINAL SCREW	11	19
F10102	REPAIR PARTS KIT INCLUDES ALL ITEMS MARKED W/ AN ASTERISK *	19	103	F14047	TERMINAL INSULATOR (INSIDE)	11	20
F1014	COTTER PIN	19	84	F14049	TERMINAL INSULATOR (OUTSIDE)	11	22
F1015	COTTER PIN	35	47	F14056	SCREW	13	47
F1059	FILL HD SCREWS, S.S., 6 - 32 X 1/4	17	80	F1425	HEX CAP SCREW, 1/4 - 20 X 2 5/8	35	63
F1064	FILL HD SCREWS, S.S., 8 - 32 X 3/8	17	45	F1425	HEX CAP SCREW, 1/4 - 20 X 5/8	37	-
F1072	FILL HD SCREW, 1/4 - 20 X 1 3/4	17	59	F1447	ROUND HD SCREW, 2 X 3/16	3	13
F1087	PLAIN WASHER	23	66	F1461	SCREW #6 X 7/8	41	40
F1099	FILL HD SCREW, 1/4 - 20 X 1/4	25	100	F1473	HEX NUT, 10 - 24	3	30
F1108	FILL HD SCREW W/LOCKWASHER, 1/4 - 20 X 3/4	15	2	F1475	FILL HD SCREW, 10 - 24 X 1/2	21	11
F1110	FILL HD SCREW, 1/4 - 20 X 5/8	25	98	F1491	HEX CAP SCREW, 5/16 - 18 X 3 1/4	35	41

PARTS INDEX

Part Number	Description	Pg.	Ref. No.	Part Number	Description	Pg.	Ref. No.
F1502	HEX CAP SCREW, 1/4 - 20 X 5/8	19	97	F1557	FLAT HD SCREW, 10 - 24 X 3/8	41	25
F1502	HEX HD SCREW, 1/4 - 20 X 5/8	9	14	F1577	FILL HD SCREW, 1/4 - 20 X 3/4	33	20
F15034	SPRING SET	9	17	F1593	HEX HD SCREW, 3/8 - 16 X 3	29	22
F1504	FILL HD SCREW, 1/4 - 20 X 1/4	17	56	F1612	HEX CAP SCREW, 3/8 - 16 X 1/4	11	8
F1504	FILL HD SCREW, 1/4 - 20 X 1/4	21	12	F1641	LOCK NUT, 1/4 - 28	9	6
F15057	BRUSH PLATE AND HOLDER	9	18	F1645	RD HD SCREW, 6 - 32 X 1/4	5	27
F15080	SPRING	9	3	F1645	RD HD SCREW, 6 - 32 X 1/4	19	100
F15099	ARMATURE	9	8	F1647	HEX NUT, 10 - 32	23	86
F15100	BENDIX	9	20	F1647	HEX NUT, 8 - 32	5	6
F15110	CLUTCH ASSEMBLY	9	4	F1647	HEX NUT, 8 - 32	11	24
F15111	NUT, STOP RETAINING	9	1	F1648	PAN HD SCREW, 10 - 24 X 3/4	5	16
F15112	STOP, PINION	9	2	F1664	SPRING PIN	29	13
F15125	HEAD ASSEMBLY, COMMUTATOR END	9	16	F1678	FILL HD SCREW, 10 - 24 X 13/16	5	2
F15126	THRUST WASHER PACKAGE	9	7	F1692	WOODRUFF KEY	11	41
F1513	HEX NUT	5	18	F1693	TIE BAR RETAINER	17	46
F1513	HEX NUT	41	3	F1696	HEX BOLT, 5/16 - 18 X 1 3/4	29	19
F1513	HEX NUT, 10 - 32	15	29	F17006	DETENT SPRING	41	18
F1513	HEX NUT, 10 - 32	21	7	F17009	BEARING	41	14
F1515	HEX NUT	5	24	F17010-1	THROTTLE GEAR	41	16
F1515	HEX NUT, 5/16 - 18	15	37	F17011	BOWED WASHER	41	15
F15165	BRUSH TERMINAL SET	9	10	F17012	RETAINING PLATE	41	13
F15167	HEAD ASSEMBLY DRIVE END	9	5	F17013	FILL HD SCREW, 1/4 - 20 X 1/2	41	11
F15168	THRU BOLT PACKAGE	9	12	F17014	THROTTLE ARM	41	10
F1528	WELCH PLUG	29	35	F17016	CABLE TERMINAL	41	9
F1532	HEX HD SCREW, 1/4 - 20 X 1	19	94	F17019	CLUTCH ARM	41	5
F1532	HEX HD SCREW, 1/4 - 20 X 1	21	35	F17021	CLUTCH GEAR	41	19
F1532	HEX HD SCREW, 1/4 - 20 X 3/4	21	43	F17026	SWIVEL	41	24
F1533	HEX BOLT, 1/4 - 20 X 7/8	21	6	F1703	SPRING LOCKWASHER	25	103
F1534	HEX CAP SCREW, 1/4 - 20 X 7/8	21	42	F1703	SPRING LOCKWASHER	31	51
F1534	HEX CAP SCREW, 1/4 - 20 X 7/8	35	55	F17031-1	SNAP CAP	41	28
F1535	HEX CAP SCREW, 1/4 - 20 X 3/4	3	8	F17036	INTERNAL TOOTH LOCKWASHER	41	6
F1535	HEX HD SCREW, 1/4 - 20 X 3/4	25	90	F1704	INTERNAL TOOTH LOCKWASHER	19	99
F1536	HEX CAP SCREW, 1/4 - 20 X 3/4	5	23	F1705	HEX CAP SCREW, 1/4 - 20 X 3/4	33	1
F1540	HEX HD SCREW, 1/4 - 20 X 5/8	21	39	F17068	DETENT SPRING	41	37
F1540	HEX SLOT HD SCREW, 1/4 - 20 X 5/8	3	14	F17071	FILL HD SCREW, 10 - 24 X 5/16	41	22
F1541	HEX CAP SCREW, 1/4 - 20 X 5/8	3	19	F1708	HEX HD CAP SCREW, 1/4 - 20 X 1 3/8	3	37
F154317	CABLE CLAMP	41	23	F1708	HEX HD SCREW, 1/4 - 20 X 1 3/8	23	77
F1545	HEX HD SCREW, 1/4 - 20 X 1/2	19	91	F17082-1	DETENT BALL	41	38
F1546	HEX HD SCREW, 1/4 - 20 X 1/2	5	42	F1709	HEX HD SCREW, 1/4 - 20 X 1/8	23	76
				F17092	SNAP RING	41	21
				F17099-1	HOUSING	41	36
				F17100	CLUTCH SHAFT	41	20
				F17103-1	BAG ASSEMBLY (NOT SHOWN)	43	-
				F17105	FELT WASHER	41	33
				F17106	COLLAR	41	34
				F17111	DETENT BALL	41	17

PARTS INDEX

Part Number	Description	Pg.	Ref. No.	Part Number	Description	Pg.	Ref. No.
F17112	JUNCTION BOARD, STARBOARD	41	26	F1759	SHIM, DISTRIBUTOR (QTY. AS REQUIRED)	11	11
F17113	JUNCTION BOARD, PORT ..	41	-	F1760	PAN HD SCREW, 10 - 24 X 3/8	5	19
F1713	SPRING PIN	33	26	F1760	PAN HD SCREW, 10 - 24 X 3/8	11	25
F17146	WOOD SCREW	41	35	F1760	PAN HD SCREW, 10 - 24 X 3/8	17	60
F17147	INTERNAL TOOTH LOCKWASHER	41	12	F1760	PLAIN WASHER	21	2
F17148	DECAL, STARBOARD	41	27	F177330	FUEL PUMP VALVE	15	9
F17149	COTTER PIN	41	8	F1778	PLAIN WASHER	11	9
F1715	HEX BOLT, 1/4 - 28 X 9/16 ..	41	7	F178323	SEAL, MOTOR LEG	29	18
F1727	PLASTIC RIVET	21	16	F178344	BUSHING, SHOCK ABSORBER UPPER	47	62
F1729	PLUG	29	9	F178362	BEARING	45	42
F1730	PAN HD SCREW W/SPRING LOCKWASHER, 1/4 - 20 X 5/8	3	34	F178446	CLAMP	45	10
F1733	PAN HD SCREW, 10 - 24 X 9/16	3	2	F1788	STOP NUT	33	15
F1734	FILL HD MOUNTING SCREW AND LOCKWASHER, 1/4 - 20 X 1/2	45	32	F17932	SEAL, FUEL TANK ADAPTER	39	12
F1734	FILL HD SCREW W/LOCKWASHER, 1/4 - 20 X 1/2	5	14	F18160-2	REED	21	28
F1741	PAN HD SCREW, 8 X 3/4 ...	5	35	F1822	HEX BOLT, 5/16 - 18 X 7/8 ..	31	46
F1741	THREAD FORMING SCREW, 8 X 3/4	45	9	F1822	HEX CAP SCREW, 5/16 - 18 X 7/8, STAINLESS STEEL	47	59
F17500	SPRING SET	45	4	F1832	STOP NUT, 1/4 - 20	23	59
F17504	BRUSH SET	45	3	F1836	PLAIN WASHER	37	72
F17505	RESERVOIR AND BRACKET W/SEAL	45	14	F184033-1	CHOKE ARM SWIVEL	19	85
F17508	THRUST WASHER	45	11	F184579	SEAL, CHOKE ARM SWIVEL	17	82
F17510	"O" RING	45	13	F1851	FILL HD SCREW W/LOCKWASHER, 10 - 24 X 1/2	5	39
F17518	FILTER CAP	45	12	F1857	HEX CAP SCREW, 5/16 - 18 X 5/8	3	17
F17522	"O" RING	45	27	F1857	HEX CAP SCREW, 5/16 - 18 X 5/8	3	29
F17523	"O" RING	47	53	F1858	HEX CAP SCREW, 5/16 - 18 X 1	3	18
F17539	BALL	45	2	F1858	HEX CAP SCREW, 5/16 18 X 1	35	39
F17543	HEAD ASSEMBLY, COMMUTATOR END	45	1	F1860	SLOTTED BINDING HD SCREW, 6 - 32 X 1/4	15	1
F1755	RD HD SCREW W/LOCKWASHER, 6 - 32 X 5/16	15	16	F1864	HEX SLOT HD. SCREW, 1/4 - 20 X 3/4	29	4
F17555	ARMATURE	45	7	F1866	PLAIN WASHER	33	16
F17556	FIELD AND FRAME ASSEMBLY	45	6	F1867	HEX CAP SCREW, 3/8 - 16 X 1	27	19
F17557	GASKET	45	5	F1869	HEX BOLT, 3/8 - 16 X 1/4 ..	23	61
F17558	THRU-BOLT PACKAGE	47	60	F1871	HEX HD SCREW, 3/8 - 16 X 3/4	31	50
F17560	HEAD ASSEMBLY	47	54	F1871	HEX HD SCREWS, 3/8 - 16 X 3/4	29	1
F17561-1	"O" RING	47	51	F1872	HEX BOLT, 3/8 - 16 X 1 3/4 ..	25	99
F17562-1	PISTON ASSEMBLY	47	52	F1873	HEX BOLT, 3/8 - 16 X 3	25	96
F17563	MOTOR AND RESERVOIR ..	45	26	F1877	TY-RAP	5	29
F17564	VALVE BODY AND PUMP ..	45	23	F1877	TY-RAP (NOT SHOWN)	47	-
F17565	DRIVE GEAR	45	25	F1883	HEX BOLT, 5/16 - 18 X 2 3/8	23	67
F17566	IDLE GEAR	45	24	F1885	HEX BOLT, 5/16 - 18 X 4 1/4	23	55
F17568	HYDRAULIC PUMP AND VALVE ASSEMBLY	47	61	F1885	HEX CAP SCREW, 5/16 - 18 X 4 1/4	33	6
F17577	ADAPTER FITTING PACKAGE	45	48	F1892	STOP NUT	7	52
F17577	ADAPTER FITTING PACKAGE	45	49	F1907	PLAIN WASHER	33	7
				F1910	STOP NUT, 1/4 - 20	15	31

PARTS INDEX

Part Number	Description	Pg.	Ref. No.	Part Number	Description	Pg.	Ref. No.
F19109	PLUG	23	73	F2067	PLASTISOL CAP (NOT SHOWN) FOR EXPOSED THREADS OF CRANKSHAFT	27	-
F19109	PLUG, GEAR HOUSING	35	31	F2088	FASTENER	3	36
F1912	HEX HD SCREW, 10 - 24 X 1/2	31	53	F2089	SLOTTED PAN HD MACHINE SCREW, 10 - 24 X 5/16	25	101
F1916	HEX HD SCREW, 1/4 - 20 X 1/8	15	25	F2090	PLUG	23	64
F1931	STOP NUT, 1/2 - 20, STAINLESS STEEL	47	56	F2093	STOP NUT, 3/8 - 24	31	60
F1934	FLAT HD SLOTTED SCREW, 6 X 1/2	7	50	F2107	FILL HD SCREW, 10 - 24 X 5/8	5	9
F1936	SPACER, BEVEL GEAR FRONT .059	33	28	F2108	LOCK NUT, 5/16 - 18	31	56
F1937	SPACER, BEVEL GEAR FRONT .062	33	-	F2108	STOP NUT, 5/16 - 18	23	58
F1938	SPACER, BEVEL GEAR FRONT .065	33	-	F2113	SPACER, BEVEL GEAR FRONT .080	33	-
F1939	SPACER, BEVEL GEAR FRONT .068	33	-	F2114	SPACER, BEVEL GEAR FRONT .083	33	-
F1940	SPACER, BEVEL GEAR FRONT .071	33	-	F2115	SPACER, BEVEL GEAR FRONT .086	33	-
F1941	SPACER, BEVEL GEAR FRONT .074	33	-	F2116	SPACER, BEVEL GEAR FRONT .089	33	-
F1942	SPACER, BEVEL GEAR FRONT .077	33	-	F2121	SPACER, BEVEL GEAR FRONT .057	33	-
F195/___	REMOTE CONTROL CABLES	54	-	F2122	SPACER, BEVEL GEAR FRONT .054	33	-
F1950	HEX HD SCREW, 10 - 24 X 5/8	23	81	F213274	GREASE FITTING	11	27
F1959	FERRY HD CAP SCREW, 1/4 - 20 X 1 3/4, STAINLESS STEEL	45	30	F213274	GREASE FITTING	29	33
F1960	PLAIN WASHER	47	57	F213342	SEAL, FUEL LINE COUPLER (LARGE)	39	4
F1963	ELASTIC STOP NUT, 5/8 - 18	45	41	F213735	SEAL, FUEL LINE COUPLER (SMALL)	39	5
F1966	PLUG, SWIVEL BRACKET	45	15	F24278	PROPELLER SHAFT SPOOL SEAL	37	-
F1968	FLYWHEEL NUT	27	21	F24278	SEAL, "O" RING PROPELLER SHAFT SPOOL	33	10
F1975	SPRING LOCKWASHER	5	10	F269319	BEARING	15	32
F1975	SPRING LOCKWASHER	11	26	F284659-2	CRANKSHAFT THRUST BEARING UPPER	27	22
F1977	STOP NUT, 8 - 32	15	40	F289446-1	CLAMP	5	12
F197787-3	FUEL LINE COUPLER	39	6	F298788	FERRULE	39	7
F1987	PLAIN WASHER	31	57	F2A404757	CYLINDER DRAIN REED PLATE	21	27
F1990	HEX CAP SCREW	37	-	F2A498023	BEVEL GEAR FRONT W/BEARING	33	29
F1990	HEX CAP SCREW, 1/4 - 20 X 1 5/8	35	61	F2A498662	BEVEL GEAR REAR W/BEARING CAGE, SPACER AND BEARING	33	22
F1994	HEX SOCKET HD CAP SCREWS, 5/16 - 18 X 1	35	37	F2A523239	SPOOL, PROPELLER SHAFT BEARING W/SEALS	33	11
F2000	HEX CAP SCREW, 5/16 - 18 X 3/4	7	47	F2A550706	GEAR HOUSING COVER W/SEAL	35	53
F2008	HEX HD SCREW, 1/4 - 20 X 7/8	15	24	F307317	CLIP, TERMINAL BLOCK	5	17
F2015	HEX NUT, 1/4 - 28	21	19	F316579	SEAL, CRANKCASE	27	11
F2016	FILL HD SCREW, 6 - 32 X 7/8	19	101	F316599	SEAL, STEERING SUPPORT TUBE	29	32
F2030	HEX HD SCREW, 1/4 - 20 X 1/4	31	44	F321756	PACKING	3	25
F203276	BOOT	11	30	F321841-3	LEAD WIRE	11	32
F2033	GROOVE PIN	19	87	F333316	THROTTLE ROLLER SHAFT	17	49
F203673	TERMINAL CLIP	11	31	F335215	SPACER, PISTON PIN (2 PER PISTON)	27	3
F2042	PLAIN WASHER	21	3				
F2047	WAVE SPRING WASHER	3	24				
F2050	HEX HD SCREW, 1/4 - 20 X 1/2	15	26				

PARTS INDEX

Part Number	Description	Pg.	Ref. No.	Part Number	Description	Pg.	Ref. No.
F335217-1	BEARING PISTON PIN (26 PER SET)	27	5	F439736	SEAL, EXHAUST TUBE	29	10
F335654-1	DEFLECTION STOP	3	15	F448446	CLAMP, TRIM SWITCH CABLE	43	41
F338618-1	GEAR SHIFT ROD SEAL	37	-	F448543	KNOB	41	29
F338618-1	SEAL, GEAR SHIFT ROD	29	17	F448611-1	HANDLE	41	30
F338618-1	SEAL, GEAR SHIFT ROD	35	56	F448894	INDICATOR - PORT	41	-
F345475-1	COIL	7	44	F449010	CYLINDER	45	38
F345683	WIRE, REGULATOR-RECTIFIER GROUND	5	5	F449253-1	HYDRAULIC LINE, TRIM CYLINDER, LOWER	45	44
F351307	SEAL, WATER PUMP	35	64	F449254	HYDRAULIC LINE, TRIM CYLINDER, UPPER	45	29
F353480	STUD	29	25	F449278	PISTON SEAL	45	36
F369529-1	CYLINDER HEAD GASKET	23	74	F449342	SEAL, PISTON SHAFT	45	34
F369529-1	CYLINDER HEAD GASKET	25	-	F449354	THRUST BRACKET	45	31
F369610	BEARING	23	53	F449545-2	CYLINDER HOUSING	45	40
F369887	SHOULDER SCREW	23	52	F449632	SHAFT	45	43
F369977-1	INTERLOCK ARM	23	54	F449754-1	HYDRAULIC LINE, LIFT CYLINDER, LOWER	45	46
F373778-1	RETAINER, ENGINE COVER	3	31	F449758	HYDRAULIC LINE, LIFT CYLINDER, UPPER	45	45
F381896-4	BATTERY CABLE	5	30	F449889	SHAFT, UPPER	47	58
F391926-1	CHOKE SOLENOID PLUNGER	19	89	F449894	INDICATOR - STARBOARD	41	32
F391983	BAND, RETAINING	7	51	F455449	SWITCH, TRIM	41	39
F3A52318	REED PLATE W/REEDS, REED STOP AND SCREW	15	19	F455690	SET SCREW	41	31
F40209	CARBURETOR STUD	15	36	F460917	STARTER RELAY	5	26
F40223	GASKET, TRANSFER PORT COVER	21	41	F474073-1	CLAMP SCREW	29	27
F40223	TRANSFER PORT COVER GASKET	25	-	F474387	TIMING DECAL	7	56
F40278	SEAL, CYLINDER	45	37	F476066-1	COVER, THERMOSTAT	23	47
F404097	FLYWHEEL	5	1	F476067	GASKET, THERMOSTAT COVER	25	94
F404268	SPRING, BY-PASS VALVE	23	84	F476067	THERMOSTAT COVER GASKET	25	-
F404470-1	REGULATOR-RECTIFIER	5	8	F480038-2	SUPPORT PLATE	3	9
F404513	COIL CLAMP	5	40	F480107-1	CAM, STARTER INTERLOCK	25	102
F404801	FITTING	21	36	F480388	DISC, WATER PUMP LOCATING	35	62
F404841	CABLE, HEAT INDICATOR	5	37	F480518	CYLINDER HEAD	23	72
F40689-1	BEARING, TOWERSHAFT	23	60	F480551-1	BRACKET INTERLOCK SWITCH	19	95
F407446	CLAMP	5	31	F480818	BEARING, LATCH SHAFT	3	7
F409251-1	GAUGE CAP	39	1	F481061-2	CARBURETOR COMPLETE (WB-21C)	17	72
F433209-1	STUD	15	30	F481382-1	SPACER, LATCH SHAFT	3	23
F433253	HOSE	21	37	F481434	GUIDE, ENGINE COVER	3	35
F438066	BY-PASS VALVE COVER	23	82	F481567	CARBURETOR INTAKE ADAPTER	17	55
F438129	SEAL, DRIVESHAFT SPLINE	37	71	F481774	BRACKET, ENGINE COVER LATCH	3	26
F438165	SCREW, FUEL PUMP BOWL	15	15	F481777	CAM, LATCH SHAFT	3	22
F438169	BEARING	29	37	F481836	INTAKE GASKET	17	70
F438271	RETAINER, CRANKSHAFT SPLINE SEAL	37	70	F481836	INTAKE GASKET	25	-
F438398	DECAL, WIRING	23	75	F481860-1	CARBURETOR, INTAKE	17	57
F438500	FUEL SEDIMENT BOWL	15	14	F485755-1	FUEL TANK ADAPTER	39	3
F438617	FUEL SEDIMENT BOWL GASKET	15	13	F498618	GEAR SHIFT ARM PIN SEAL	37	-
F438653	FUEL SEDIMENT BOWL SCREEN	15	12	F498618	SEAL	35	33
F438668	RETAINER, CABLE CLAMP	5	13	F498891	PIN, GEAR SHIFT ARM	35	32
F438744-1	WIRING HARNESS	5	4	F498891	PIN, PROPELLER NUT RETAINING	33	14
F438747	FUEL PUMP DIAPHRAGM	15	7	F499995	CYLINDER HEAD COVER	23	68
F438754	FUEL LINE	17	79	F500843	CABLE	45	8
F438760	FUEL PUMP GASKET	15	8				
F438801	FITTING	15	5				
F438930	RETAINER, SNOOT	35	36				
F438962	SHOCK MOUNT SIDE	29	15				

PARTS INDEX

Part Number	Description	Pg.	Ref. No.	Part Number	Description	Pg.	Ref. No.
F50109	PLUG, GEAR HOUSING	35	44	F550133	MOTOR LEG	29	16
F50342-1	BEARING CAGE BOLT SEAL	37	-	F550244	INLET WATER LINE	33	5
F50342-1	SEAL, BEARING CAGE BOLTS	33	8	F550346	SHOCK MOUNT, LOWER . .	31	49
F506118	PROPELLER SHAFT SEAL .	37	-	F550615	GEAR SHIFT ROD UPPER . .	31	55
F506118	SEAL, DRIVESHAFT	35	52	F550704	COUPLER, GEARSHIFT ROD UPPER	31	48
F506118	SEAL, PROPELLER SHAFT .	33	9	F550705	GEAR SHIFT ROD LOWER .	35	46
F510374	DECAL, CIRCUIT BREAKER - USA	5	41	F563	TERMINAL BLOCK KIT	56	-
F510460	CIRCUIT BREAKER	5	22	F58685-2	CONNECTOR, SHIFT CABLE	41	2
F511125-2	TUBE, STEERING SUPPORT	29	31	F590	REMOTE CONTROL HEAD (SINGLE LEVER)	54	-
F511675	STARTER BRACKET, LOWER	9	15	F5H002	SPEEDOMETER FLUSH MOUNT	56	-
F523031	GASKET, WATER PUMP . . .	35	57	F5H003	SPEEDOMETER FLUSH MOUNT	54	-
F523031	GASKET, WATER PUMP . . .	37	-	F5H004	SPEEDOMETER FLUSH MOUNT	55	-
F523057	BEARING, DRIVESHAFT LOWER	35	66	F5H005	TEMPERATURE GAUGE FLUSH MOUNT	55	-
F523065	IMPELLER	37	-	F5H006	VOLTMETER - FLUSH MOUNT	55	-
F523065	WATER PUMP IMPELLER . .	35	59	F5H007	HOURMETER - FLUSH MOUNT	55	-
F523094-2	PROPELLER NUT	33	13	F5H008	FUEL GAUGE FLUSH MOUNT	55	-
F523099-1	SPACER, PROPELLER	33	19	F5H010	POWER TRIM INDICATOR .	54	-
F523116	EXHAUST SNOOT	35	38	F5H012	TACHOMETER FLUSH MOUNT	55	-
F523146	SEAL, CRANKSHAFT LOWER	27	13	F5H014	FLUSHING ADAPTER	54	-
F523188	NUT, BEVEL PINION RETAINING	35	34	F5H018	DUAL ENGINE TIE BAR	54	-
F523273	STEERING BALL STUD	31	63	F5H019	ANTI-CORROSION KIT	54	-
F523274	GREASE FITTING	29	30	F5H021	EXTENSION CABLE	55	-
F523280	NUT, STEERING SUPPORT TUBE	29	39	F5H025	ANTI-CORROSION SACRIFICIAL ANODE	54	-
F523300-1	SPRING	31	67	F5H026	FUEL TANK (ACCESSORY ITEM)	39	2
F523411	RETAINING RING	33	23	F5H026	STEEL, 6 GALLON FUEL TANK (LOW PROFILE) . . .	54	-
F523451	SPACER, REED STOP	15	34	F5H028	SENDING UNIT	55	-
F523498	DRIVE KEY, WATER PUMP .	35	68	F5H029	TANK ANCHOR	54	-
F523498	KEY	37	-	F5H030	SWITCH KIT - RUNNING LIGHTS	54	-
F523555	GEAR HOUSING COVER SEAL	37	-	F5H031	SWITCH KIT - SPOT LIGHT .	54	-
F523555	SEAL, "O" RING - GEAR HOUSING COVER	35	49	F5H032	SWITCH KIT - WIPER	54	-
F523562	PLATE, WATER PUMP	37	-	F5H034	SWITCH KIT - BILGE PUMP .	54	-
F523562	WATER PUMP BACK PLATE	35	58	F5H035	SWITCH KIT - HORN	54	-
F523813	BEARING CUP	33	30	F5H036	SWITCH KIT - TACHOMETER TRANSFER	54	-
F523834	CLIP, SPARK PLUG WIRE . .	21	5	F5H037	CIGAR LIGHTER	55	-
F523881-1	STEERING LINK	31	61	F5H038	IGNITION SWITCH MOUNTING KIT (ACCESSORY ITEM)	7	49
F523899	GROMMET, WATER LINE . .	33	4	F5H038	SWITCH KIT - IGNITION SWITCH	55	-
F523930	RETAINER	31	62	F5H039	SWITCH KIT - INSTRUMENT LIGHT	55	-
F523961	CRUSH RING	35	50	F5H040	STEEL, 12 GALLON FUEL TANK	54	-
F523962	SHOCK MOUNT	7	46	F5H041	BATTERY TERMINAL KIT . .	55	-
F528068	THERMOSTAT	23	70				
F530160	REED (5 PETAL)	15	18				
F531892	DECAL, PORT	41	-				
F532299	WASHER, PROPELLER SPLINE	33	17				
F53504	GROMMET	17	58				
F545189	BUSHING, CABLE ENTRY . .	3	11				
F548894	BLANKET, SILENCER TOP (NOT SHOWN)	3	-				
F548985	BLANKET, SILENCER SIDE (NOT SHOWN)	3	-				
F549189	BUSHING, ELECTRIC CABLE	3	10				

PARTS INDEX

Part Number	Description	Pg.	Ref. No.	Part Number	Description	Pg.	Ref. No.
F5H043	OVERHEAT BUZZER	54	-	F8083	SPRING LOCKWASHER	37	-
F5H043	OVERHEAT BUZZER (ACCESSORY ITEM)	5	36	F8088	PLAIN WASHER	19	102
F5H068	RFI SUPPRESSION KIT	55	-	F8088	PLAIN WASHER	19	83
F5H070	REMOTE ELECTRIC CABLE	55	-	F8095	PLAIN WASHER	23	62
F5H075	WIRING HARNESS - IGNITION SWITCH (24")	55	-	F8096	SPRING LOCKWASHER	3	16
F5H076	SWITCH EXTENSION CABLE 5'	56	-	F8096	SPRING LOCKWASHER	3	28
F5H077	IGNITION KEY SWITCH	55	-	F8096	SPRING LOCKWASHER	5	25
F5H078	IGNITION KEY SWITCH	55	-	F8096	SPRING LOCKWASHER	31	47
F5H078	IGNITION SWITCH (LONG BARREL) W/KEYS AND SCREWS	5	34	F8096	SPRING LOCKWASHER	35	40
F5H081	BATTERY CABLE	55	-	F84011	WASHER	29	42
F5H094	STEERING LINK KIT	54	-	F84074	CLAMP SCREW FOOT	29	26
F5H108	STEERING CONNECTOR	56	-	F84146-2	SEAL	27	20
F5H112	INSTRUMENT ADAPTER - 3 1/2"	56	-	F84278	CRANKSHAFT BRG. SEAL CAGE SEAL	25	-
F5H119	PROPELLER SPACER - FLARED	55	-	F84278	SEAL, CRANKSHAFT BEARING CAGE	27	17
F5H120	REMOTE CONTROL BACK PLATE	56	-	F84286-1	FRICITION WASHER	29	34
F5H130	REMOTE CONTROL BOX (SINGLE LEVER)	54	-	F84305	PROPELLER SHAFT SPOOL SEAL	37	-
F5H131	PORT SIDE DECAL KIT	54	-	F84305	SEAL, PROPELLER SHAFT BEARING SPOOL	33	12
F5H134	BOAT WHITE LACQUER	54	-	F84307-1	DRIVESHAFT SEAL	37	-
F63754	HOSE INTAKE DRAIN	17	63	F84314-2	ELBOW	15	3
F7004	STOP NUT, 3/18 - 16	21	24	F84314-2	ELBOW	21	22
F7012	LOCK NUT, 1/2 - 20	29	21	F84342	SEAL, INLET WATER LINE UPPER	33	3
F7013	STOP NUT	11	2	F84449	INTERLOCK SWITCH	19	98
F74305	GEAR HOUSING COVER SEAL	37	-	F84504	GROMMET	23	71
F74305	SEAL, DRIVESHAFT BEARING CAGE	35	51	F84504	THERMOSTAT GROMMET	25	-
F762	REMOTE ELECTRIC CABLE	55	-	F84521-1	CLUTCH	33	27
F8003	PLAIN WASHER	21	30	F84792	GASKET, FUEL PUMP VALVE	15	10
F8004	PLAIN WASHER	3	21	F84871-1	PIN, GEAR SHIFT	33	25
F8011	PLAIN WASHER	5	20	F85017	PISTON PIN	27	4
F8026	PLAIN WASHER	19	-	F85026	SWIVEL	21	21
F8028	PLAIN WASHER	9	13	F85033	CHOKE ROD SWIVEL	17	81
F8038	PLAIN WASHER	25	104	F85035	DISTRIBUTOR CONTROL ROD END	21	20
F8038	PLAIN WASHER	31	66	F85036	TOWERSHAFT CONTROL ROD END	21	17
F8039	PLAIN WASHER	31	59	F85037-1	STERN BRACKET PIVOT BOLT	29	41
F8056	LOCKWASHER	11	18	F85095-2	STATOR	5	3
F8056	LOCKWASHER	11	43	F85117	BRACKET, WATER LINE	33	2
F8056	SPRING LOCKWASHER	5	7	F85122	CRANKCASE SEAL	25	-
F8056	SPRING LOCKWASHER	23	87	F85122	PARTING LINE SEAL	25	93
F8058	INTERNAL TOOTH LOCKWASHER	15	27	F85130	BOOT, IDLE EXHAUST	29	7
F8058	INTERNAL TOOTH LOCKWASHER	23	48	F85151-1	EXHAUST PORT PLATE	23	80
F8077	WASHER	37	-	F85152-4	EXHAUST PORT COVER	23	78
F8077	WASHER, GEAR HOUSING PLUG	35	43	F85154-1	EXHAUST PORT PLATE GASKET	25	-
F8080	SPRING LOCKWASHER	31	65	F85154-1	GASKET, EXHAUST PORT PLATE	23	79
F8083	SPRING LOCKWASHER	3	20	F85159	GASKET, INTAKE MANIFOLD	15	22
F8083	SPRING LOCKWASHER	7	43	F85159	MANIFOLD GASKET	25	-
F8083	SPRING LOCKWASHER	29	3	F85161-1	REED STOP	15	17
F8083	SPRING LOCKWASHER	35	54	F85162	REED PLATE ADAPTER	15	21
				F85168	CARBURETOR ADAPTER FLANGE GASKET	25	-

PARTS INDEX

Part Number	Description	Pg.	Ref. No.	Part Number	Description	Pg.	Ref. No.
F85173	RETAINING RING	11	6	F9097	SHIM, DRIVESHAFT		
F85192-1	THROTTLE CAM	15	33		BEARING UPPER .010 -		
F85210	STUD	25	91		BLACK	35	-
F85211	STUD, REAR	21	46	F9106	SHIM, DRIVESHAFT		
F85253-1	FUEL LINE	19	88		BEARING UPPER .003 -		
F85258	INSERT	29	8		BRASS	35	67
F85279-2	CYLINDER EXHAUST			F91446-1	CIRCUIT BREAKER		
	GASKET, UPPER	23	51		BRACKET	5	21
F85279-2	CYLINDER, EXHAUST -			F92759	THROTTLE ROLLER	17	48
	UPPER GASKET	25	-	F93811	SCREEN	21	26
F85311	DISTRIBUTOR BELT	11	1	F93920	REED STOP	21	29
F85314-1	FUEL FITTING	19	92	F97772	FUEL LINE CLAMP	39	11
F85317-1	CLAMP	19	90	F97772	HOSE CLAMP	17	62
F85372	PIN, GEAR SHIFT ROD			F98273	ROD END CONNECTOR		
	LOWER	35	48		STUD	23	50
F8538	SPRING PIN	29	28	FA14048-2	PREAMPLIFIER	11	17
F85380	SPRING	29	6	FA15072	HEX LOCK NUT, 1/4 - 20	9	11
F85410	SNAP RING	27	8	FA17559	LIFT CYLINDER COMPLETE	45	47
F85445	DISTRIBUTOR CONTROL			FA178962	SHOCK ABSORBER		
	ROD	21	18		W/BUSHING	47	55
F85472-2	CYLINDER DRAIN COVER			FA321574	DISTRIBUTOR BRACKET	11	10
	GASKET	25	-	FA335260	PISTON RING SET (3 PER		
F85472-2	GASKET, CYLINDER DRAIN				SET)	27	1
	COVER	21	32	FA368700	IGNITION KEY - NO LETTER		
F85498	FLYWHEEL KEY	27	16		OR STAMPED A	7	53
F85502	THROTTLE LINK	21	8	FA411222	TRANSFER PORT COVER		
F85509-1	CHOKE LINK	17	78		W/PLUG	21	40
F85571	BEARING CAGE	27	10	FA438431	FUEL PUMP BODY		
F85606	KINGPIN CAP	31	43		W/VALVES	15	11
F85610	BEARING	23	56	FA438493	TERMINAL BLOCK BRACKET	5	11
F8563	DOWEL PIN	25	92	FA439746	FUEL PUMP COVER	15	6
F85634-2	CONNECTING ROD SCREW	27	14	FA449015	PISTON	45	35
F85660-1	EXHAUST TUBE	29	2	FA449149	COVER W/SEALS AND		
F85664	DISTRIBUTOR GROUND	11	28		RETAINER	45	33
F85664	GROUND WIRE	7	54	FA480179	TRIM, TOP	3	1
F85748-2	CYLINDER DRAIN REED			FA480269	TILT HANDLE	3	3
	PLATE GASKET	25	-	FA480876	GEAR SHIFT ARM		
F85748-2	GASKET, CYLINDER DRAIN				W/SWIVEL, INTERLOCK		
	REED PLATE	21	25		ARM AND BEARINGS	23	57
F85762	BY-PASS VALVE GASKET	25	-	FA480894	TIMING POINTER	21	1
F85762	GASKET, BY-PASS VALVE	23	83	FA481469	ENGINE COVER LATCH		
F85772	CLAMP	29	5		HANDLE W/SHAFT	3	6
F85779-1	BAFFLE, AIR INTAKE	31	52	FA481743	BRACKET, ROLLER LATCH	3	27
F85843-1	REMOTE ELECTRIC CABLE,			FA498266	BEVEL PINION GEAR		
	18 FEET	5	38		W/CRUSH RING AND		
F85859	STUD, FORWARD	21	23		SHIMS	35	35
F85906	CARBURETOR GASKET	15	35	FA510497	TERMINAL BLOCK	5	15
F85906	CARBURETOR GASKET	25	-	FA523014	CRANKSHAFT LOWER MAIN		
F85908	STARTER LEAD WIRE	9	19		BEARING W/ SEAL	27	12
F85916-1	BY-PASS VALVE	23	85	FA523054	GEAR HOUSING	35	42
F85924	CHOKE SOLENOID	5	28	FA523098	PROPELLER SHAFT	33	24
F85925	CHOKE ROD	19	86	FA523485	ANTI-CORROSION ANODE	33	21
F85965	SHOCK MOUNT, UPPER	31	54	FA523735	SEAL, INLET WATER LINE		
F89758	FUEL PUMP AIR HOSE, TOP	15	4		LOWER	35	65
F9018	CAP	29	40	FA535395	IDENTIFICATION PLATE		
F9052	PLUG	29	29		W/SCREWS	3	12
F90619-1	YOKE	37	73	FA548180	TRIM, REAR	3	4
F90807	RETAINING RING	17	47	FA548888	TRIM, FRONT	3	33

PARTS INDEX

Part Number	Description	Pg.	Ref. No.	Part Number	Description	Pg.	Ref. No.
FA550018	CRANKSHAFT W/BEARING	27	15	FO15230	THROTTLE SHAFT AND LEVER	17	50
FA584396	DECAL, STARBOARD	3	-	FO15623	FUEL BOWL GASKET	17	71
FA584397	DECAL, PORT	3	38	FO16008	THROTTLE SHAFT RETURN SPRING	17	51
FA58976-1	CONNECTOR, THROTTLE CABLE	41	1	FO16850	CHOKE SHAFT AND LEVER	17	74
FA84621-1	COUPLING, GEAR SHIFT ARM W/BUSHING	35	45	FO16851	THROTTLE SHUTTER	15	42
FA84754-1	FUEL LINE SHORT W/FERRULES	39	8	FO2510	GASKET, FUEL BOWL RETAINING SCREW	17	66
FA85019	KINGPIN W/PLUG	29	36	FO4326	BODY CHANNEL WELCH PLUG	15	38
FA85193	TIE BAR END W/SWIVEL	15	43	FO8942	SHUTTER SCREW W/LOCKWASHER	15	41
FA85355-1	WASHER, SHOCK MOUNT UPPER	31	58	FO8942	THROTTLE SHUTTER SCREW AND LOCKWASHER	19	96
FA85511	THROTTLE BAR W/SWIVEL	17	44	FOB2603	INSTALLATION INSTRUCTIONS (5H094 STEERING LINK KIT)	31	68
FA85655-1	CRANKSHAFT MAIN BEARING RACE W/SNAP RING	27	9	FP524	PROPELLER, (ACCESSORY ITEM)	33	18
FA85838-5	TOWERSHAFT W/BEARINGS, SWIVEL, ARMS AND SCREW	21	10	FS409752	FUEL LINE COMPLETE	39	-
FB368700	IGNITION KEY STAMPED B	7	-	FS480955	STARTER COMPLETE	9	-
FC368700	IGNITION KEY STAMPED C	7	-	FSA335260	PISTON RINGS (3 PER SET) .010 OVERSIZE	27	-
FC584054	GEAR HOUSING COMPLETE.	35	-	FT1082	SNAP RING PLIER	49	-
FD368700	IGNITION KEY STAMPED D	7	-	FT11204	BEARING CUP INSTALLER	50	-
FE368700	IGNITION KEY STAMPED E	7	-	FT11205	BEARING INSTALLER/REMOVER	50	-
FG1020	GASKET SET	25	105	FT11209	BEARING GUIDE SET	50	-
FK1063	SEAL KIT	37	74	FT2961	LUBRICANT - RYKON #2EP	52	-
FK1069	WATER PUMP KIT	37	75	FT2962-1	SEALANT - 50 CC LOCTITE H, NON-HARDENING GRADE	52	-
FK405020	SWIVEL W/PIVOT SCREW AND NUT	21	15	FT2963-1	SEALANT - 2 OZ. LOCTITE D, HARDENING GRADE	52	-
FK551128	DRIVESHAFT W/BEARING, SHIMS AND CRUSH RING	37	69	FT2987-1	LUBRICANT - ANTI-SEIZE	52	-
FK750-3	SPARKIE	13	44	FT2990	PISTON PIN TOOL	49	-
FK85228-1	BEARING CAGE W/ROLLER	27	7	FT2996	RING COMPRESSOR	49	-
FO10165	INLET SEAT GASKET	17	75	FT3012	SEAL INSTALLER	50	-
FO10588	BODY CHANNEL CUP PLUG	15	39	FT7848	TORQUING ADAPTER	50	-
FO10790	INLET NEEDLE, SEAT AND GASKET	17	76	FT8901	INDICATOR HOLDER	50	-
FO11103	IDLE SCREW SPRING	17	53	FT8902	DIAL INDICATOR	50	-
FO13430	MAIN FUEL JET (.070) OPT. 1500 FT. - 3000 FT.	17	-	FT8903	SEAL INSTALLER	49	-
FO13552	FUEL BOWL	17	67	FT8907	DRIVE HANDLE	49	-
FO13554	FLOAT	17	69	FT8907	DRIVER HANDLE	50	-
FO13555	CHOKE SHUTTER	17	77	FT8914	SEAL REMOVER	49	-
FO13944	FLOAT LEVER PIN	17	68	FT8918	BEARING GUIDE SET	50	-
FO13945	FUEL BOWL RETAINING SCREW	17	65	FT8919	SPRING PIN PUNCH	50	-
FO13946	IDLE SCREW	17	54	FT8925	SEAL INSTALLER	49	-
FO13947	CHOKE SHAFT RETURN SPRING	17	73	FT8925	SEAL INSTALLER	50	-
FO13967	MAIN FUEL JET (.068) OPT. 3000 FT. - 4500 FT.	17	-	FT8926	RING EXPANDER	49	-
FO14108	MAIN FUEL JET (.064) OPT. 6000 FT. & UP.	17	-	FT8927	SEAL PROTECTOR	49	-
FO14188	MAIN FUEL JET (.066) OPT. 4500 FT. - 6000 FT.	17	-	FT8933	LIFTING HOOK	49	-
FO15026	MAIN FUEL JET (.072) STD. LEVEL - 1500 FT.	17	52	FT8935	SEALANT PRIMER - 6 OZ.	52	-
FO15217	MAIN NOZZLE	19	93	FT8936	SEALANT - 2 CC LOCTITE RETAINING COMPOUND #75	52	-
				FT8948-1	PULLER	48	-
				FT8948-1	PULLER	50	-

PARTS INDEX

Part Number	Description	Pg.	Ref. No.	Part Number	Description	Pg.	Ref. No.
FT8950	LEAKAGE TESTER	51	-				
FT8953	IGNITION TESTER	51	-				
FT8955	SEALANT - 5 OZ. EC-750 INDUSTRIAL SEALANT ..	52	-				
FT8957	SEAL INSTALLER	50	-				
FT8969	LUBRICANT - 7 OZ. 2 PSI LUBRICANT	52	-				
FT8978	TIMING LIGHT	48	-				
FT8978	TIMING LIGHT	51	-				
FT8985	SEAL INSTALLER	50	-				
FT8993	SEALANT - 3 OZ. RTV SEALANT FROM IN PLACE GASKETS	52	-				
FT8997	SHIMMING TOOL SET	50	-				
FTA2937-1	TIMING TOOL	48	-				
FTK8999	TEST WHEEL	51	-				
OB3061	LITERATURE (NOT SHOWN)	43	-				
T11211	BOAT WHITE	53	-				
T11212	BOAT BLACK	53	-				
T11230	ORANGE	53	-				
22-817789A1	DRAIN FITTING W/METERING CUP	17	64				
22-818103--1	ELBOW	17	61				
31-817785A2	CRANKSHAFT BEARING CAGE W/SEAL	27	18				
32-817738A1	FUEL LINE LONG W/CLAMP AND FERRULE	39	10				
33-97180	SPARK PLUG (CHAMPION L- 20V)	23	65				
39-818110A1	PISTON RINGS (3 PER SET) .030 OVERSIZE	27	-				
46-817853A1	WATER PUMP	37	-				
46-817853A1	WATER PUMP BODY W/DRIVESHAFT SEAL, DISC AND WATER LINE SEAL	35	60				
84-817775A1	COIL WIRE W/TERMINAL CLIP	11	29				
87-817778A1	THERMOSWITCH	23	88				
300-817855A1	UNIT	7	45				
600-818052A4	CONNECTING ROD W/CAP AND SCREWS	27	6				
700-817988A2	PISTON .010 OVERSIZE ...	27	-				
700-818111A2	PISTON .030 OVERSIZE ...	27	-				
700-F372015-3	PISTON	27	2				
800-817823A7	CYLINDER	25	89				
800-817901A9	SHORT BLOCK (NOT SHOWN).	25	-				
1400-817958A6	STERN BRACKET	29	20				