



PARTS CATALOG

3.5 H.P.

SERIAL NUMBER

3.5 (1980) 32H0D

TABLE OF CONTENTS:

ACCESSORIES	27
CARBURETOR & REED PLATE	8
FUEL TANK	2
GEAR HOUSING	18
MAGNETO	6
MOTOR LEG	16
PARTS INDEX	28
POWER HEAD	12
SPECIAL TOOLS - LOWER UNIT	24
SPECIAL TOOLS - LUBRICANTS AND SEALANTS	26
SPECIAL TOOLS - POWER HEAD	23
SPECIAL TOOLS - TEST EQUIPMENT	25
SPECIAL TOOLS - TUNE-UP	22
STARTER	4

NOTE: *Indented description indicate that these parts are included in preceeding assembly.*

AR = As Required

NSS = Not Sold Separate

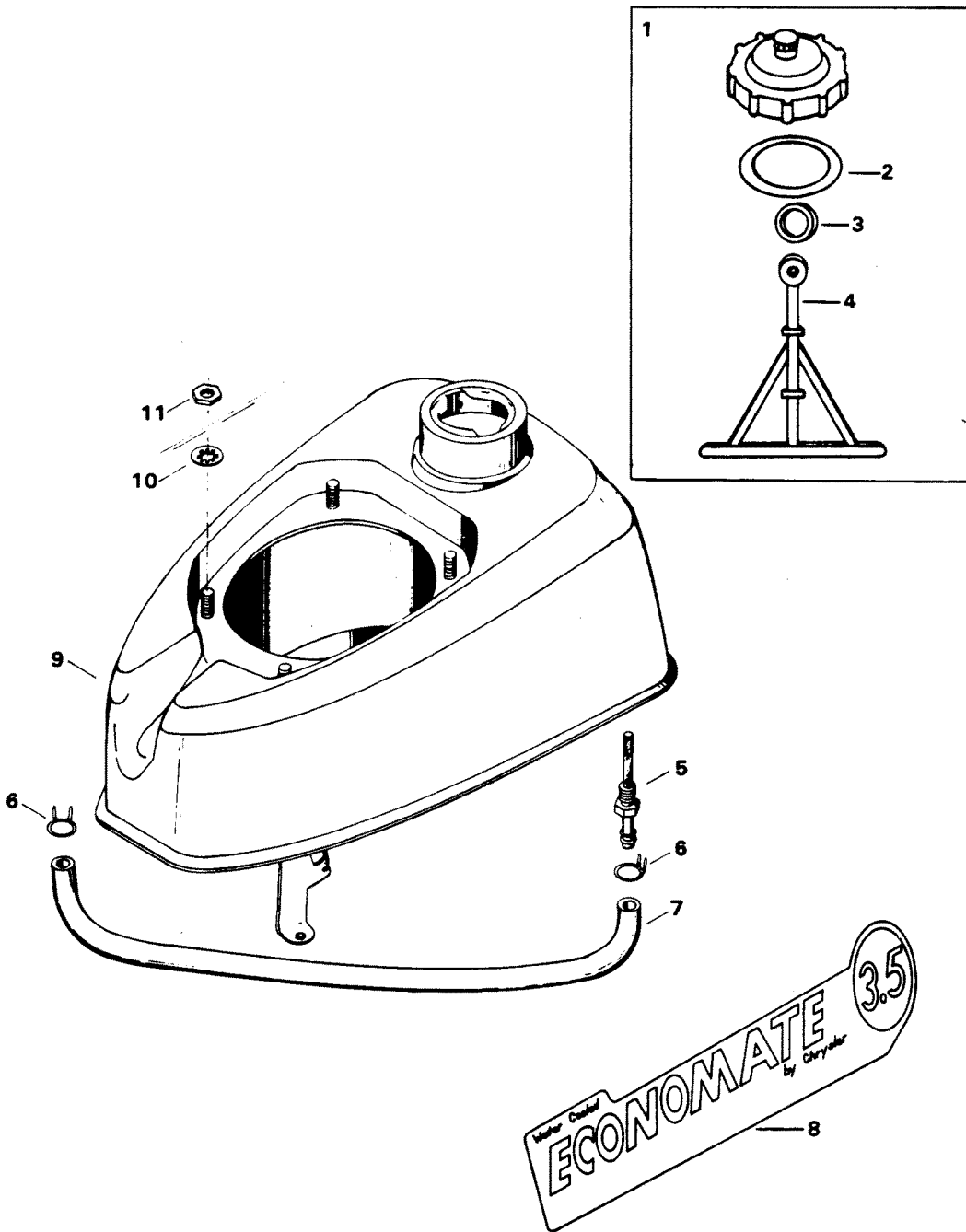
OPT = Optional

NS = Not Shown

THESE PARTS BOOKS/FICHE CARD ARE COPYRIGHTED AND MAY NOT BE DISTRIBUTED OR REPRODUCED IN ANY OTHER FORMAT BY ANYONE OTHER THAN MERCURY MARINE WITHOUT THE PRIOR WRITTEN CONSENT OF MERCURY MARINE.

THIS PAGE INTENTIONALLY LEFT BLANK

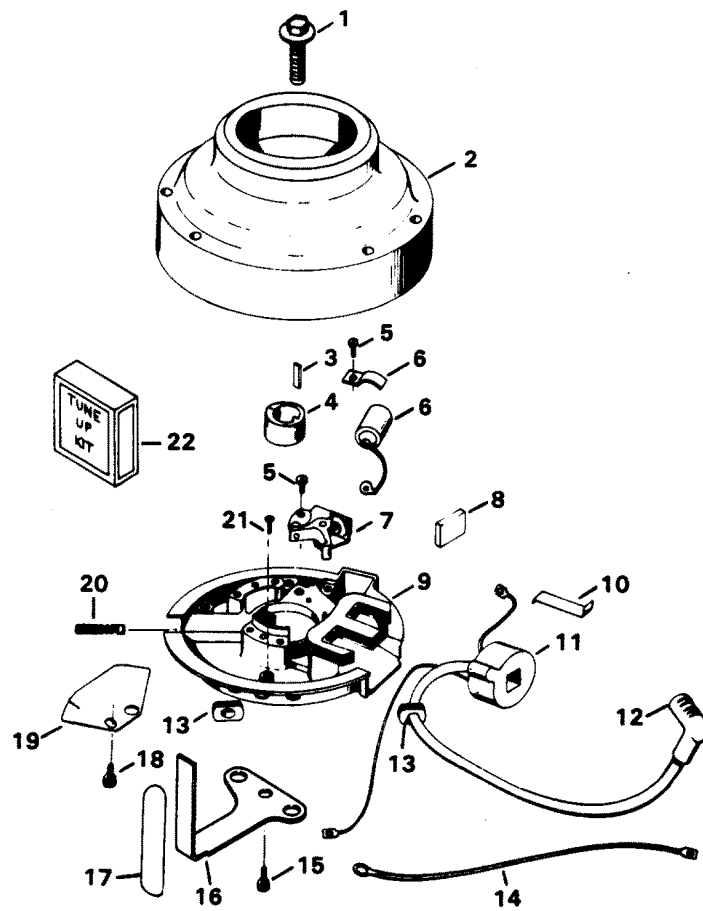
FUEL TANK



FUEL TANK

REF. NO.	PART NO.	SYM.	QTY.	DESCRIPTION
1	F521251-3		1	GAS CAP COMPLETE (NOT SHOWN). INCLUDES ILLUSTRATION 2, 3, 4
2	F17980		1	FUEL CAP GASKET
3	F427249		1	RETAINING RING
4	F17938		1	ANCHOR
5	F521811		1	FITTING, GAS TANK
6	F2706772		2	HOSE CLAMP
7	F901753		1	HOSE
8	FA601397		1	DECAL, ENGINE COVER - PORT W/LITERATURE
-	FA601396		1	DECAL, ENGINE COVER - STARBOARD W/LITERATURE
9	F521034-1		1	FUEL TANK
10	F8061		4	INTERNAL TOOTH LOCKWASHER

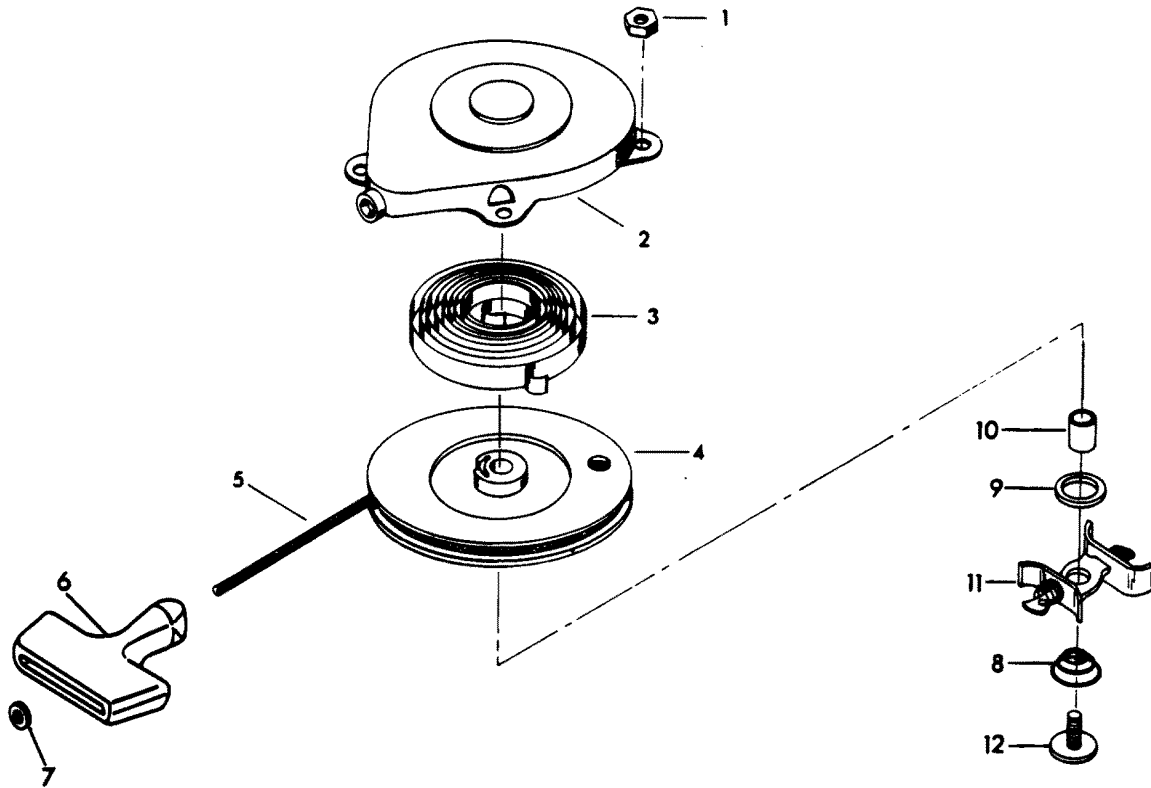
STARTER



STARTER

REF. NO.	PART NO.	SYM.	QTY.	DESCRIPTION
1	F1896		4	HEX NUT
2	F15601		1	COVER
3	F15570		1	SPRING, REWIND
4	F15591		1	ROTOR
5	F15582-1		1	STARTER ROPE
6	F286132		1	HANDLE, STARTER ROPE
7	F2042		1	PLAIN WASHER
8	F15596		1	SPRING
9	F15594		2	WASHER
10	F15602		1	NYLINER
11	F15595		1	FRICITION SHOE ASSEMBLY
12	F15597		1	SCREW

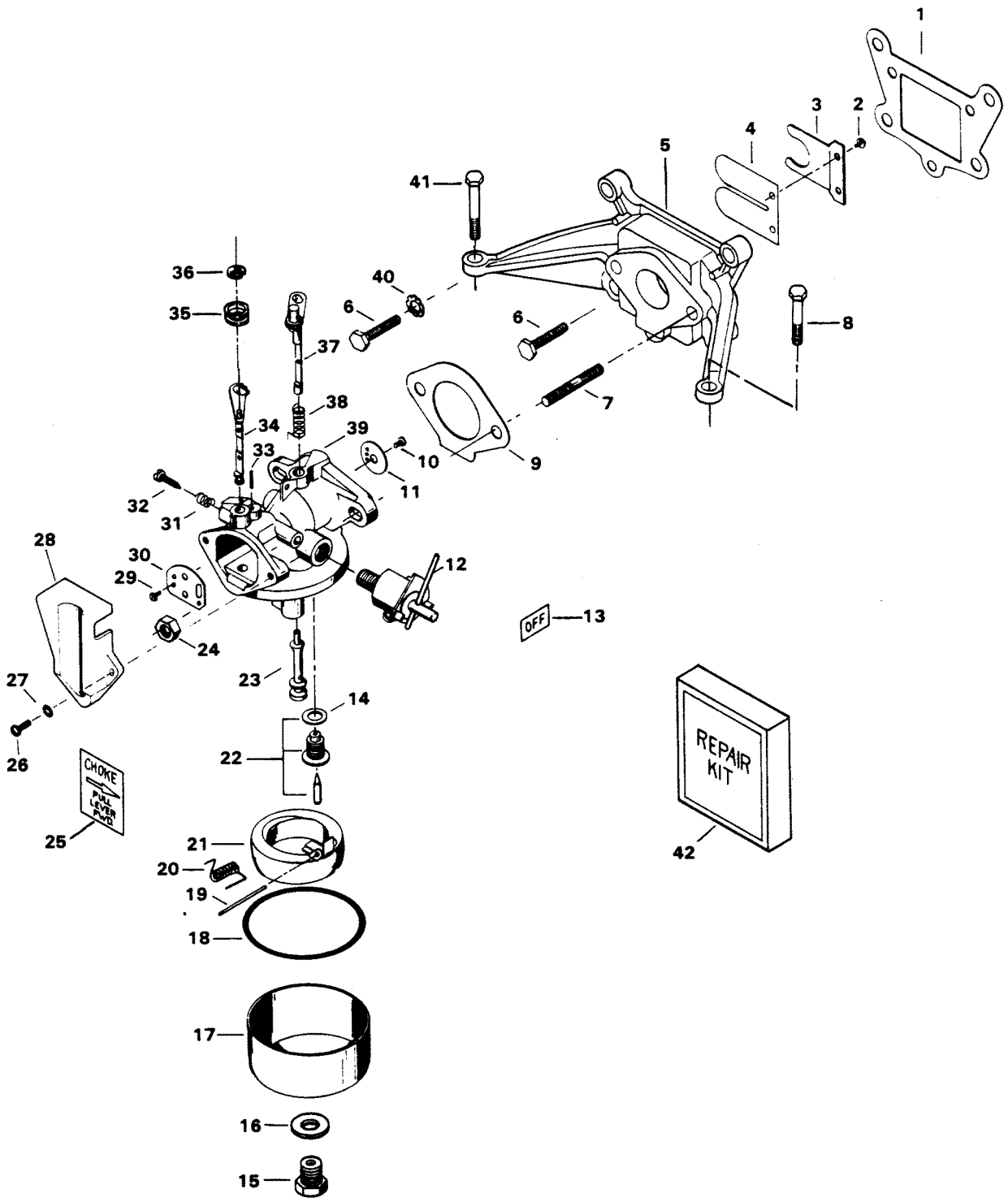
MAGNETO



MAGNETO

REF. NO.	PART NO.	SYM.	QTY.	DESCRIPTION
1	F521552		1	SCREW, FLYWHEEL
2	F535097		1	FLYWHEEL
3	F521498		1	KEY, FLYWHEEL
4	F521002		1	CAM
5	F12090		2	MOUNTING SCREW
6	FK12357		1	CONDENSER W/CLAMP
7	F12359		1	CONTACT SET
8	F12360		1	FELT CAM
9	F12362		1	STATOR PLATE W/CORE
10	F12363		1	WEDGE SPRING
11	F12358		1	COIL W/LEAD WIRE AND WEDGE SPRING
12	FK750-2		1	SPARKIE KIT
13	F12361		1	LEAD WIRE AND GROMMET PACKAGE
14	F521908		1	GROUND WIRE
15	F1734		1	SLOTTED FILL HD SCREW, 1/4 - 20 X 1/2
16	F601081		1	THROTTLE LEVER
17	F459137		1	GRIP
18	F1655		1	HEX HD SCREW W/SPRING LOCKWASHER, 1/4 - 20 X 3/8
19	F521192		1	THROTTLE CAM
20	F12066		1	FRICTION SCREW
21	F1298		1	ROUND HD SCREW W/LOCKWASHER
22	FK1058		1	TUNE-UP KIT. INCLUDES ITEMS MARKED WITH AN ASTERISK (*)

CARBURETOR & REED PLATE

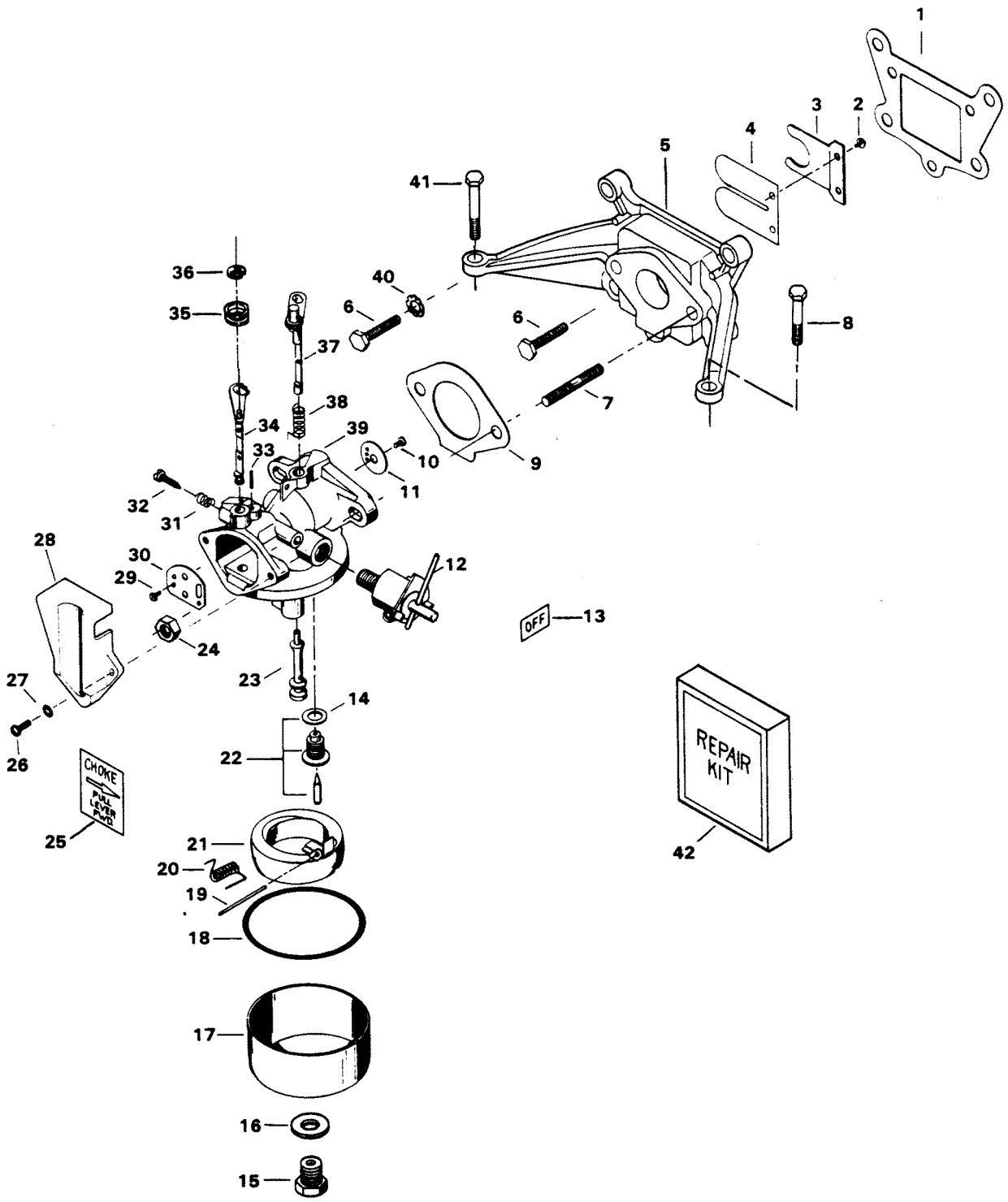


CARBURETOR & REED PLATE

REF. NO.	PART NO.	SYM.	QTY.	DESCRIPTION
1	F521168		1	GASKET, CARBURETOR ADAPTER
2	F1755		2	ROUND HD SCREW W/LOCKWASHER, 6 - 32 X 5/16
3	F525161		1	REED STOP
4	F31160-1		1	REED
5	F2A332167		1	CARBURETOR ADAPTER W/STUDS, REED AND STOP
6	F1532		4	HEX CAP SCREW, 1/4 - 20 X 1
7	F27209-1		2	STUD, CARBURETOR
9	F521906		1	GASKET, CARBURETOR
10	F10071		1	SCREW
11	F10060		1	THROTTLE
12	F601489		1	VALVE, FUEL SHUT-OFF
13	F521894		1	DECAL "OFF"
14	F10066		1	GASKET, VALVE SEAT
15	F10096		1	JET ASSEMBLY (.039) STD. SEA LEVEL - 3000 FT.
-	F10093		-	JET ASSEMBLY (.038) OPT. SEA LEVEL - 3000 FT. - 5000 FT.
-	F10086		-	JET ASSEMBLY (.037) OPT. SEA LEVEL - 5000 FT. - 7000 FT.
-	F10094		-	JET ASSEMBLY (.036) OPT. SEA LEVEL - 7000 FT & UP OPTIONAL SIZE MAIN FUEL JETS (USE ONLY AT ALTITUDES INDICATED)
16	F10090		2	GASKET, BOWL RETAINER
17	F10058		1	FUEL BOWL
18	F10068		1	GASKET, FUEL BOWL
19	F10064		1	FLOAT PIN
20	F10084		1	SPRING, FLOAT SUPPORT
21	F10063		1	FLOAT
22	F10100		1	VALVE, SEAT AND GASKET ASSEMBLY
23	F10065		1	NOOZLE
24	F1490		2	HEX NUT, 1/4 - 20
25	F601248		1	DECAL (CHOKE)
26	F1064		2	FILL HD SCREW, 8 - 32 X 3/8
27	F8078		2	LOCKWASHER, INTERNAL TOOTH
28	F521708		1	CARBURETOR COVER
29	F10070		2	SCREW, CHOKE VALVE
30	F10062		1	CHOKE VALVE
31	F10073		1	SPRING, IDLE ADJUSTMENT NEEDLE
32	F10077		1	NEEDLE, IDLE
33	F10072		1	SPRING, CHOKE STOP
34	F10061		1	CHOKE SHAFT
35	F318504		1	GROMMET, CHOKE
36	F90807		1	RETAINER, CHOKE
37	F10059		1	THROTTLE SHAFT

CONTINUED ON NEXT PAGE ➡

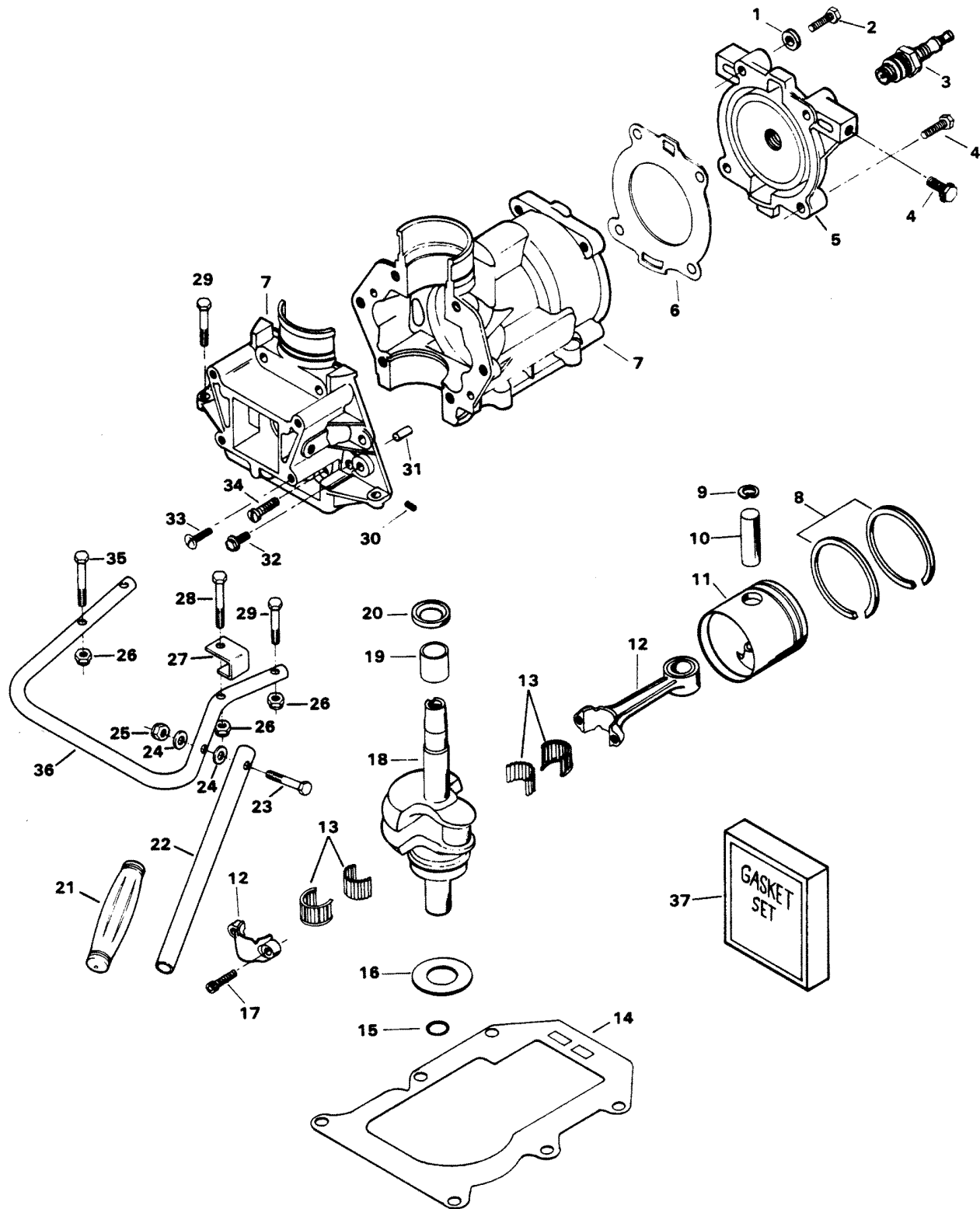
CARBURETOR & REED PLATE



CARBURETOR & REED PLATE

REF. NO.	PART NO.	SYM.	QTY.	DESCRIPTION
38	F10075		1	SPRING, THROTTLE RETURN
39	F521061-6		1	CARBURETOR - COMPLETE
40	F8060		2	INTERNAL TOOTH LOCKWASHER
42	F10098		1	REPAIR KIT. INCLUDES ALL ITEMS MARKED WITH AN ASTERISK (*)
-	F10069		1	GASKET SET. INCLUDES ALL ITEMS MARKED WITH A DOUBLEASTERISK (**)

POWER HEAD

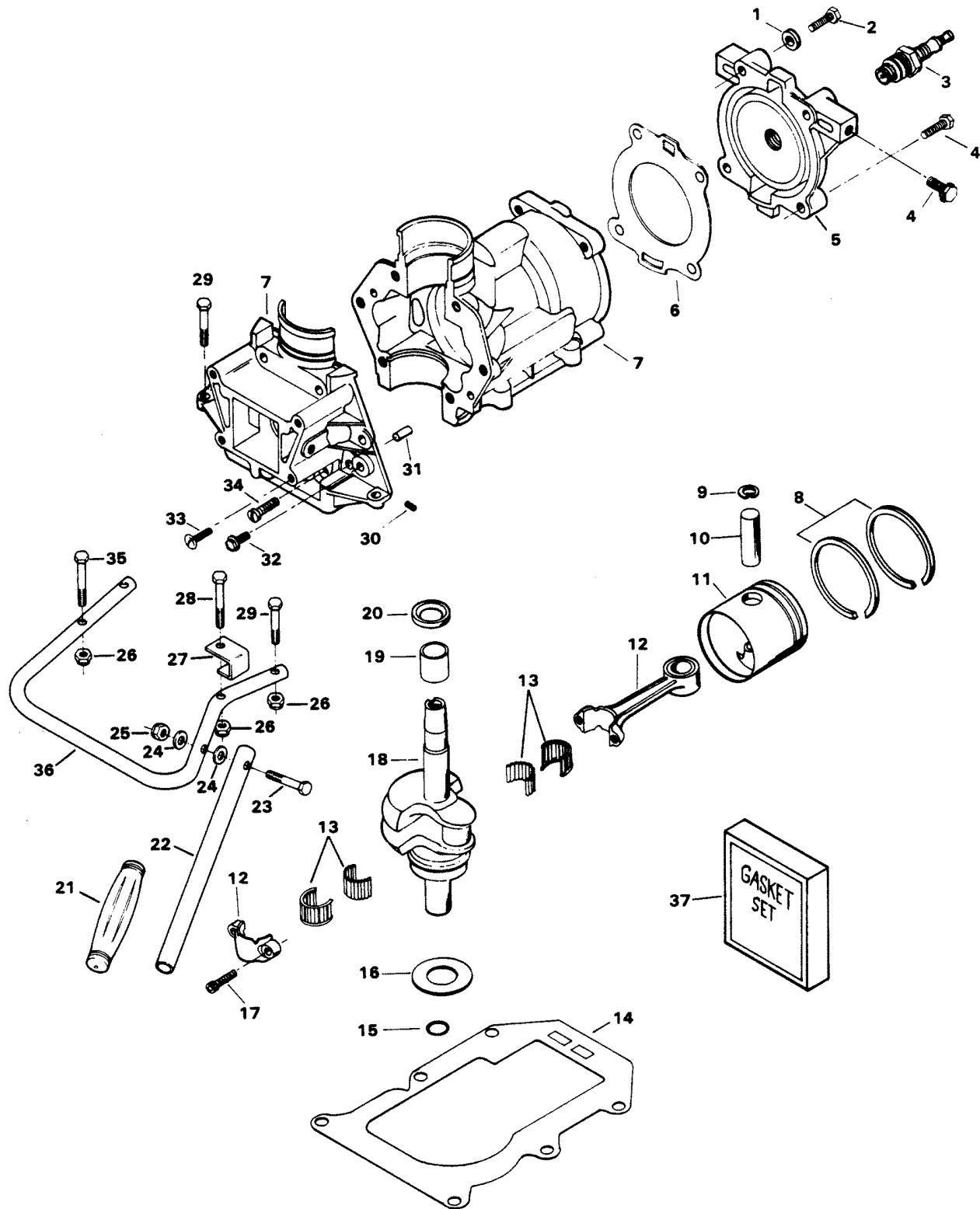


POWER HEAD

REF. NO.	PART NO.	SYM.	QTY.	DESCRIPTION
1	F8028		4	WASHER, PLAIN
2	F901938-1		4	SCREW, CYLINDER HEAD
3	33-82370M		1	SPARK PLUG (L-86)
4	F1426		2	SCREW, HEX HD 1/4 - 20 X 7/16
5	F521518		1	HEAD, CYLINDER
6	F521529		1	GASKET, CYLINDER HEAD
7	FA601010		1	CYLINDER ASSEMBLY W/CRANKCASE COVER, DOWEL PINS & SCREWS
-	FC601010		1	SHORT BLOCK (NOT SHOWN) INCLUDE ALL ITEMS MARKED WITH AN ASTERISK (*)
8	39-818038A1		2	RING SET, PISTON (2 RINGS)
9	F250410		2	RING, RETAINING, PISTON PIN
10	F250017		1	PIN, PISTON
11	F521015		1	PISTON
12	F2A521016		1	ROD, CONNECTING W/SCREWS AND BEARINGS
13	FA567241		2	BEARING ASSEMBLY, W/CAGE AND ROLLERS
14	F521279		1	GASKET, CYLINDER EXHAUST
15	F521579		1	SEAL, SPLINE, CRANKSHAFT
16	F521118-1		1	SEAL, CRANKSHAFT, LOWER
17	F36634		2	SCREW, CONNECTING ROD
18	F2A521018		1	CRANKSHAFT ASSEMBLY W/SLINGER AND LOWER BEARING
19	F521013		1	BEARING, CRANKSHAFT, UPPER
20	F521146		1	SEAL, CRANKSHAFT, UPPER
21	F211137-1		1	GRIP, STEERING HANDLE
22	F601079		1	HANDLE, STEERING
23	F1893		1	SCREW 5/16 - 18 X 1 1/2
24	F1907		2	WASHER
25	F2108		1	NUT, LOCK 5/16 - 18
26	F7019		4	NUT, LOCK 1/4 - 20
27	F601078		1	BRACKET, STEERING HANDLE STOP
28	F1891		1	SCREW 1/4 - 20 X 1 1/2
29	F1699		2	SCREW 1/4 - 20 X 1 1/8
30	F1789		1	PLUG, PIPE
31	F8559		2	PIN, DOWEL
32	F2040		1	SCREW 1/4 - 20 X 5/8
33	F1107		2	SCREW 1/4 - 20 X 3/4
34	F1099		4	SCREW 1/4 - 20 X 1 1/4
35	F1708		1	SCREW 1/4 - 20 X 1 3/8
36	F601647		1	HANDLE
37	FG1015		1	GASKET SET. INCLUDES ITEMS LISTED BELOW

CONTINUED ON NEXT PAGE ➡

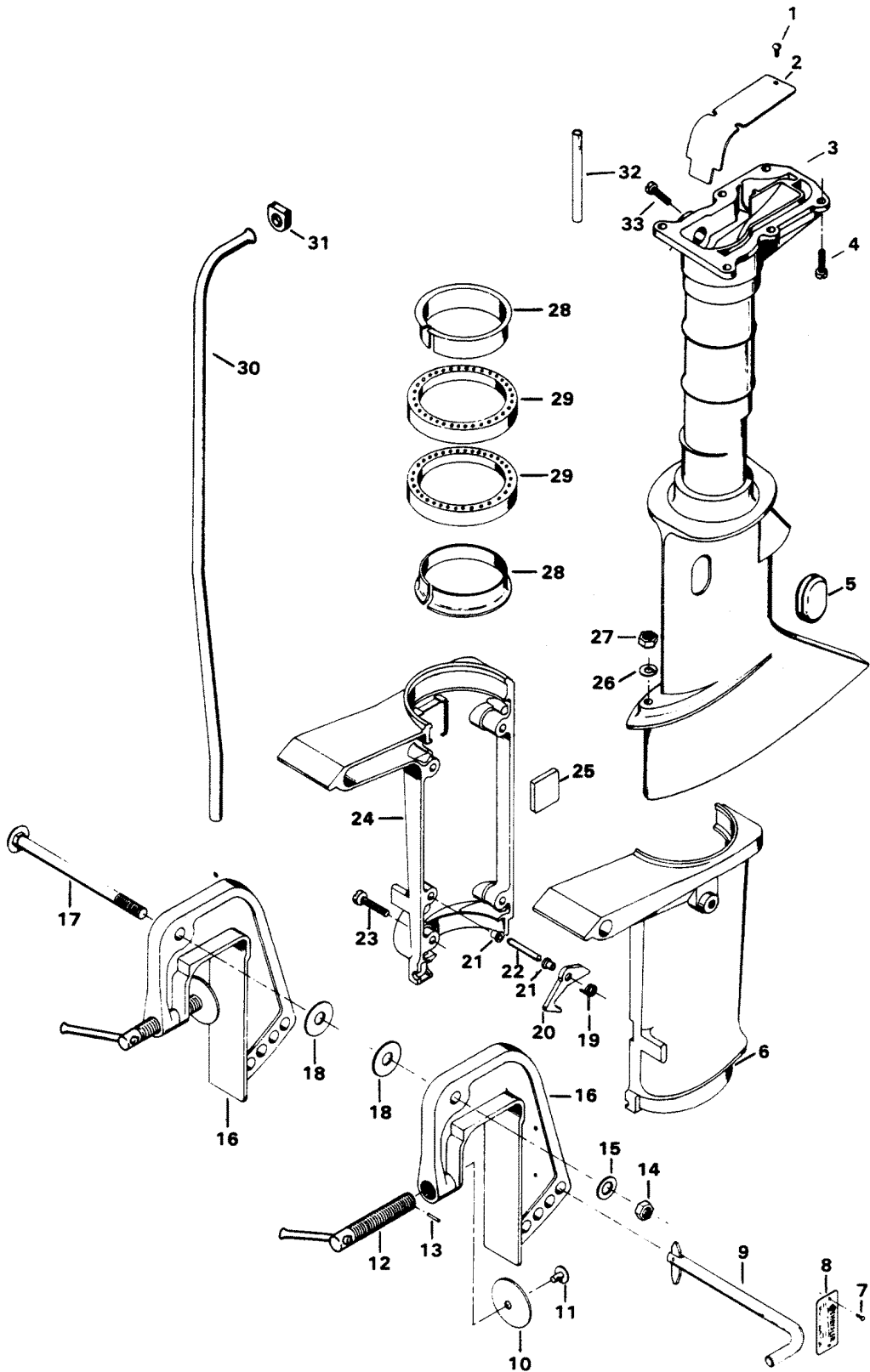
POWER HEAD



POWER HEAD

REF. NO.	PART NO.	SYM.	QTY.	DESCRIPTION
-	F521159		2	GASKET, REED PLATE
-	F521168		1	GASKET, CARBURETOR ADAPTER
-	F521279		1	GASKET, CYLINDER, EXHAUST
-	F521529		1	GASKET, CYLINDER HEAD
-	F521906		1	GASKET, CARBURETOR

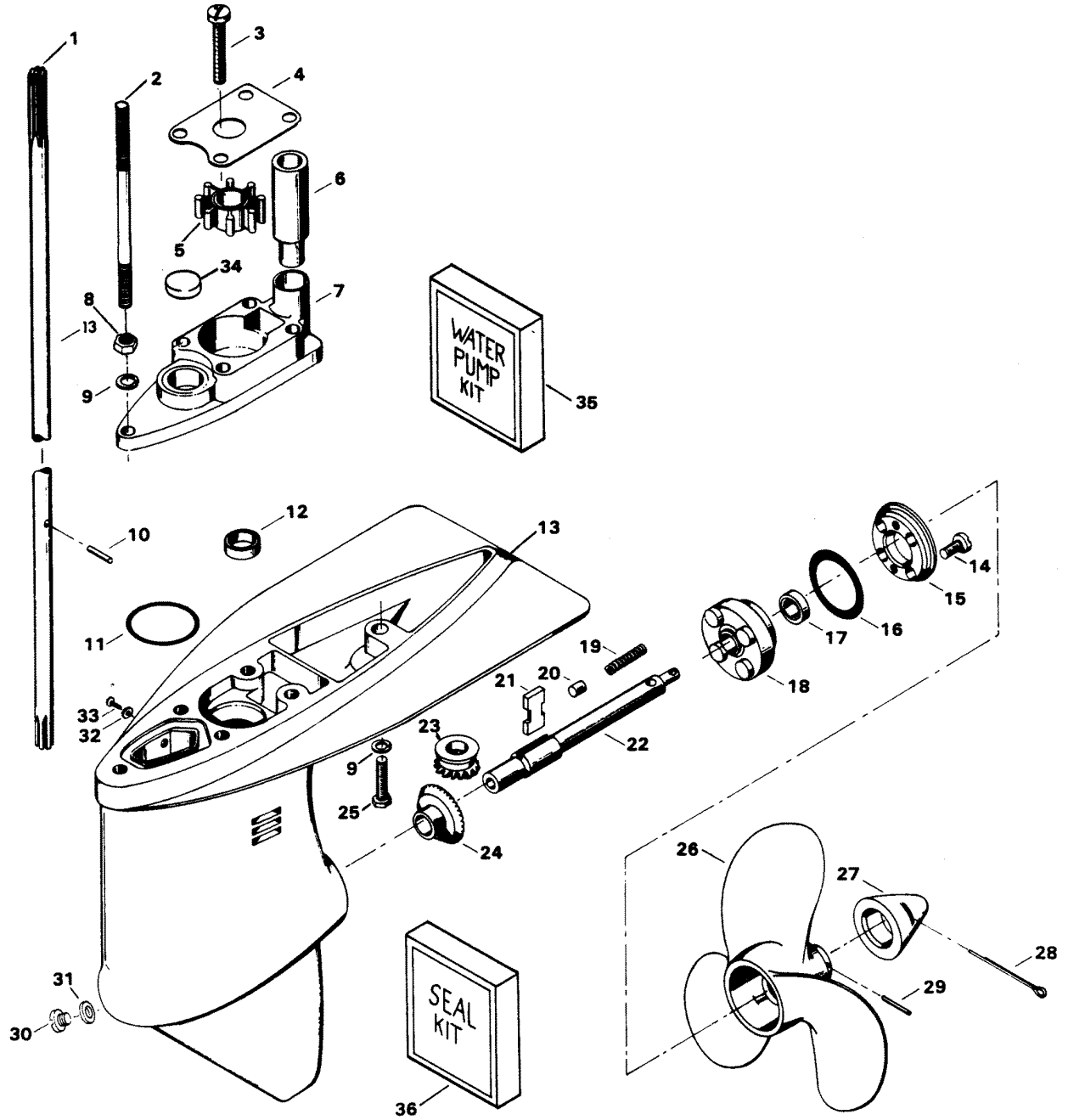
MOTOR LEG



MOTOR LEG

REF. NO.	PART NO.	SYM.	QTY.	DESCRIPTION
1	F1645		3	RD HD THD. CUTTING, 6 - 32 X 1/4
2	FA341151		1	PLATE, EXHAUST W/ILLUSTRATION 1
3	FK601133		1	MOTOR LEG W/ITEMS 1, 2, AND 32
4	F1540		6	HEX HD SCREW, 1/4 - 20 X 5/8
5	F46899-1		1	COVER, SHIFT COUPLING
6	F468072-3		1	SWIVEL BRACKET - PORT W/ILLUSTRATION 21
7	F1447		2	DRIVE SCREW, 2 X 3/16
8	FA538395		1	PLATE, IDENTIFICATION W/SCREWS
9	817810A1		1	LOCK BAR
10	F24074		2	CLAMP SCREW FOOT
11	F66480		2	STUD
12	FA28073-1		2	CLAMP SCREW W/FOOT AND STUD
13	F8537		2	SPRING PIN
14	F7026		1	STOP NUT 3/8 - 16
15	F8039		1	PLAIN WASHER
16	FA601532		2	STERN BRACKET W/CLAMP SCREW & FOOT
17	F468037-1		1	PIVOT BOLT
18	F2037		2	PLAIN WASHER
19	F468300		1	SPRING, REVERSE LOCK
20	F468349		1	REVERSE LOCK
21	F197813		2	BEARING
22	F468350		1	PIN, REVERSE LOCK
23	F2035		4	PHILIPS FILL HD SCREW, 1/4 - 20 X 1
24	F601572		1	SWIVEL BRACKET - STARBOARD W/ILLUSTRATION 21
25	F521661-1		2	PAD, SWIVEL FRICTION
26	F8083		1	SPRING LOCKWASHER
27	F1341		1	NUT
28	F468169		2	BEARING, SWIVEL BRACKET
29	F468346		2	SHOCK MOUNT
30	F521244-1		1	WATER LINE STANDARD LEG
31	F521342-1		1	SEAL, WATER LINE
32	F521261		1	LINE, WATER OUTLET
33	F1445		1	SCREW, 1/4 - 14 X 3/8

GEAR HOUSING

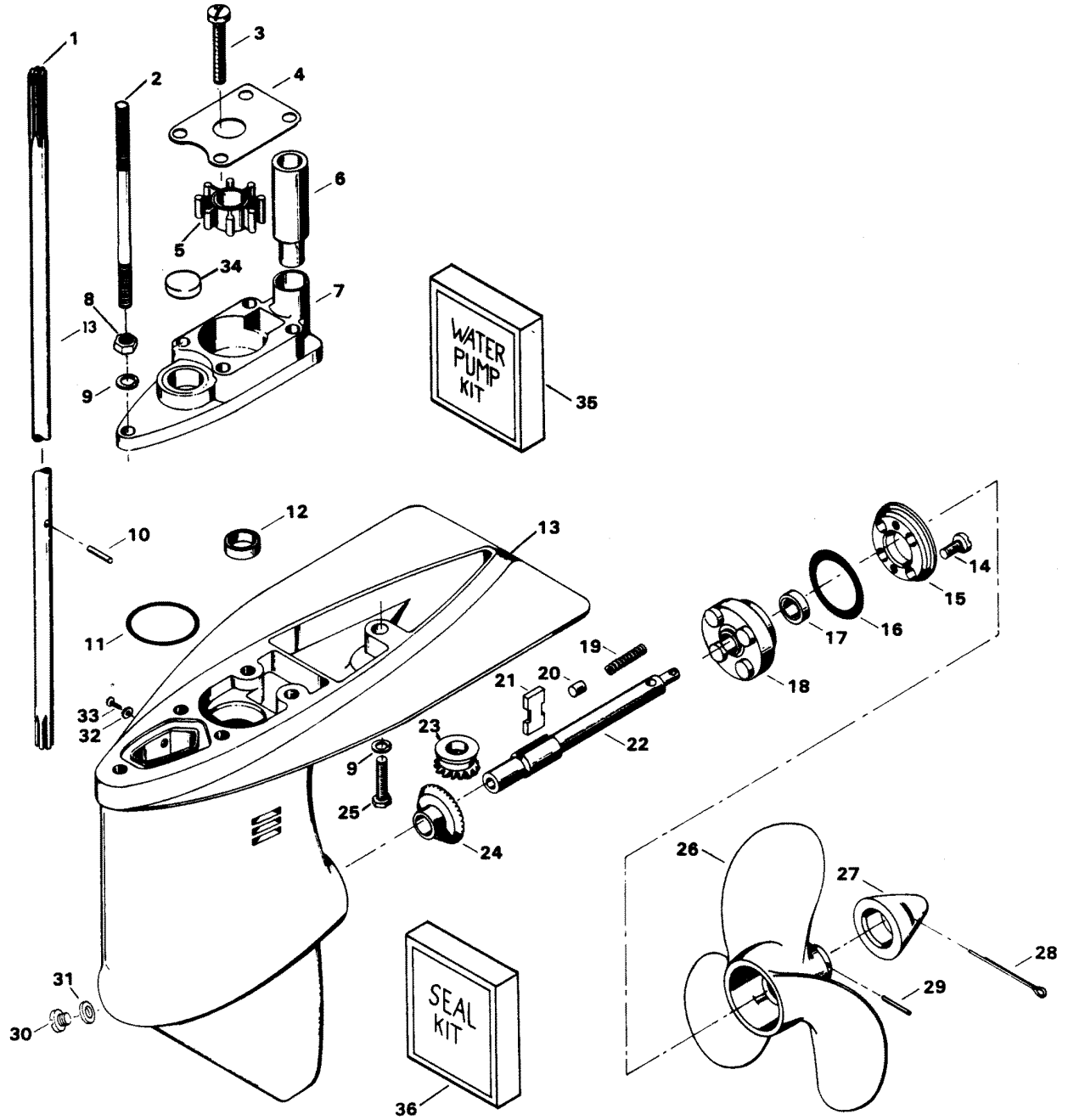


GEAR HOUSING

REF. NO.	PART NO.	SYM.	QTY.	DESCRIPTION
1	F521128		1	DRIVESHAFT
2	F601006		1	STUD
3	F1504		4	FILL HD SCREW, 1/4 - 20 X 1 1/4
4	F521537		1	PLATE, WATER PUMP
5	F521065		1	IMPELLER
6	FA521735		1	SEAL, WATERLINE W/LITERATURE
7	FA601060		1	BODY, WATER PUMP W/PLUG
8	F1341		1	NUT
9	F8083		2	LOCKWASHER
10	F390563		1	PIN, PUMP DRIVE
11	F521783		1	SEAL
12	F318307		1	SEAL, DRIVESHAFT
13	F2A521054		1	GEAR HOUSING ASSEMBLY W/PLUG, VENT SCREW, WASHER DRIVESHAFT BEARING AND SEAL
-	FC601054		1	GEAR HOUSING ASSEMBLY COMPLETE. INCLUDE ALL ITEMS MARKED WITH AN ASTERISK (*)
14	F525457		4	SCREW, 1/4 - 20 X 5/8
15	F521296		1	RETAINER, PROPELLER SHAFT BEARING CAGE
16	F521305		1	SEAL, "O" RING
17	F521307		1	SEAL, PROPELLER SHAFT
18	FA521298		1	CAGE, BEARING W/BEARING AND SEAL
19	F409719		1	SPRING, CLUTCH
20	F318372		1	PIN, CLUTCH
21	F409521		1	CLUTCH
22	FA409098		1	SHAFT, PROPELLER
23	F521266		1	GEAR, BEVEL PINION
24	FA521023		1	GEAR, BEVEL
25	F1199		1	SCREW, 1/4 - 20 X 1
26	FP332		1	PROPELLER
27	11-817752A1		1	NUT, PROPELLER W/COTTER PIN
28	F1846		1	PIN, COTTER
29	FA324101		1	PIN, PROPELLER (PACK OF 3)
30	F50109		1	PLUG, GEAR HOUSING
31	F8077		1	WASHER
32	F8074		1	WASHER
33	F1077		1	SCREW, 10 - 24 X 1/4
34	F1526		1	PLUG
35	FK1118		1	WATER PUMP KIT. INCLUDES ITEMS LISTED BELOW
-	FA521735		1	SEAL, WATERLINE
-	FA601060		1	BODY, WATER PUMP

CONTINUED ON NEXT PAGE ➡

GEAR HOUSING



GEAR HOUSING

REF. NO.	PART NO.	SYM.	QTY.	DESCRIPTION
-	F521537		1	PLATE, PUMP, TOP
-	F521065		1	IMPELLER, WATER PUMP
-	F338618-1		1	SEAL
-	F1504		4	SCREW 1/4 - 20 X 1 1/4
36	FK1057		1	GEAR HOUSING SEAL KIT. INCLUDE ALL ITEMS MARKED WITH A DOUBLE ASTERISK (**)

SPECIAL TOOLS - TUNE-UP

REF. NO.	PART NO.	SYM.	QTY.	DESCRIPTION
-	FT8998		0	KNOCK-OFF SCREW TO REMOVE FLYWHEEL
-	FT2989		0	FLYWHEEL WEDGE TO REMOVE FLYWHEEL
-	FT2993		0	SPANNER WRENCH TO HOLD FLYWHEEL WHEN REMOVING FLYWHEEL SCREW

SPECIAL TOOLS - POWER HEAD

REF. NO.	PART NO.	SYM.	QTY.	DESCRIPTION
-	FT8929		0	CONNECTING ROD TOOL TO REMOVE CONNECTING ROD SCREWS
-	FT8926		0	RING EXPANDER TO REMOVE AND INSTALL PISTON RINGS
-	FT1749		0	SNAP RING PLIERS TO REMOVE AND INSTALL PISTON PIN RETAINING RINGS
-	FT2997		0	RING COMPRESSOR INSTALL PISTON AND RINGS IN CYLINDER

SPECIAL TOOLS - LOWER UNIT

REF. NO.	PART NO.	SYM.	QTY.	DESCRIPTION
-	FT8948-1		0	PULLER TO REMOVE BEARING CAGE RETAINER
-	FT2915		0	SEAL INSTALLER TO INSTALL PROPELLER SHAFT SEAL AND DRIVE SHAFT SEAL

SPECIAL TOOLS - TEST EQUIPMENT

REF. NO.	PART NO.	SYM.	QTY.	DESCRIPTION
-	T8974		0	BREAKER POINT TENSION GAUGE TO CHECK BREAKER POINT SPRING TENSION
-	FT8950		0	LEAKAGE TESTER TO CHECK GEAR HOUSING FOR LEAKS

SPECIAL TOOLS - LUBRICANTS AND SEALANTS

REF. NO.	PART NO.	SYM.	QTY.	DESCRIPTION
-	FT8969		0	LUBRICANT - LPSI
-	FT2987-1		0	LUBRICANT - ANTI-SEIZE
-	FT2961		0	LUBRICANT - RYKON GREASE #2EP
-	FT8983		0	SEALANT - RTV
-	FT2962-1		0	SEALANT - LOCTITE H, NON-HARDENING
-	FT2963-1		0	SEALANT - LOCTITE D, HARDENING GRADE
-	FT8936		0	SEALANT - LOCTITE RETAINING COMPOUND #75
-	FT8935		0	SEALANT PRIMER - GRADE T

ACCESSORIES

REF. NO.	PART NO.	SYM.	QTY.	DESCRIPTION
-	F596		0	CHRYSLER OUTBOARD OIL SEE BLOCK COMMENT 1.
-	F597		0	CHRYSLER OUTBOARD GEAR LUBE SEE BLOCK COMMENT 2.
-	F5H059		0	CHRYSLER OUTBOARD MULTI-PURPOSE GREASE

PARTS INDEX

Part Number	Description	Pg.	Ref. No.	Part Number	Description	Pg.	Ref. No.
817810A1	LOCK BAR	17	9	F1504	FILL HD SCREW, 1/4 - 20 X 1		
F10058	FUEL BOWL	9	17		1/4	19	3
F10059	THROTTLE SHAFT	9	37	F1504	SCREW 1/4 - 20 X 1 1/4	21	-
F10060	THROTTLE	9	11	F1526	PLUG	19	34
F10061	CHOKE SHAFT	9	34	F1532	HEX CAP SCREW, 1/4 - 20 X		
F10062	CHOKE VALVE	9	30		1	9	6
F10063	FLOAT	9	21	F1540	HEX HD SCREW, 1/4 - 20 X		
F10064	FLOAT PIN	9	19		5/8	17	4
F10065	NOOZLE	9	23	F15570	SPRING, REWIND	5	3
F10066	GASKET, VALVE SEAT	9	14	F15582-1	STARTER ROPE	5	5
F10068	GASKET, FUEL BOWL	9	18	F15591	ROTOR	5	4
F10069	GASKET SET.	11	-	F15594	WASHER	5	9
F10070	SCREW, CHOKE VALVE	9	29	F15595	FRICITION SHOE ASSEMBLY	5	11
F10071	SCREW	9	10	F15596	SPRING	5	8
F10072	SPRING, CHOKE STOP	9	33	F15597	SCREW	5	12
F10073	SPRING, IDLE ADJUSTMENT			F15601	COVER	5	2
	NEEDLE	9	31	F15602	NYLINER	5	10
F10075	SPRING, THROTTLE			F1645	RD HD THD. CUTTING, 6 - 32		
	RETURN	11	38		X 1/4	17	1
F10077	NEEDLE, IDLE	9	32	F1655	HEX HD SCREW W/SPRING		
F10084	SPRING, FLOAT SUPPORT	9	20		LOCKWASHER, 1/4 - 20 X		
F10086	JET ASSEMBLY (.037) OPT.				3/8	7	18
	SEA LEVEL - 5000 FT. -			F1699	SCREW 1/4 - 20 X 1 1/8	13	29
	7000 FT.	9	-	F1708	SCREW 1/4 - 20 X 1 3/8	13	35
F10090	GASKET, BOWL RETAINER	9	16	F1734	SLOTTED FILL HD SCREW,		
F10093	JET ASSEMBLY (.038) OPT.				1/4 - 20 X 1/2	7	15
	SEA LEVEL - 3000 FT. -			F1755	ROUND HD SCREW		
	5000 FT.	9	-		W/LOCKWASHER, 6 - 32 X		
F10094	JET ASSEMBLY (.036) OPT.				5/16	9	2
	SEA LEVEL - 7000 FT &			F1789	PLUG, PIPE	13	30
	UP	9	-	F17938	ANCHOR	3	4
F10096	JET ASSEMBLY (.039) STD.			F17980	FUEL CAP GASKET	3	2
	SEA LEVEL - 3000 FT.	9	15	F1846	PIN, COTTER	19	28
F10098	REPAIR KIT.	11	42	F1891	SCREW 1/4 - 20 X 1 1/2	13	28
F10100	VALVE, SEAT AND GASKET			F1893	SCREW 5/16 - 18 X 1 1/2	13	23
	ASSEMBLY	9	22	F1896	HEX NUT	5	1
F1064	FILL HD SCREW, 8 - 32 X 3/8	9	26	F1907	WASHER	13	24
F1077	SCREW, 10 - 24 X 1/4	19	33	F197813	BEARING	17	21
F1099	SCREW 1/4 - 20 X 1 1/4	13	34	F2035	PHILIPS FILL HD SCREW,		
F1107	SCREW 1/4 - 20 X 3/4	13	33		1/4 - 20 X 1	17	23
F1199	SCREW, 1/4 - 20 X 1	19	25	F2037	PLAIN WASHER	17	18
F12066	FRICITION SCREW	7	20	F2040	SCREW 1/4 - 20 X 5/8	13	32
F12090	MOUNTING SCREW	7	5	F2042	PLAIN WASHER	5	7
F12358	COIL W/LEAD WIRE AND			F2108	NUT, LOCK 5/16 - 18	13	25
	WEDGE SPRING	7	11	F211137-1	GRIP, STEERING HANDLE	13	21
F12359	CONTACT SET	7	7	F24074	CLAMP SCREW FOOT	17	10
F12360	FELT CAM	7	8	F250017	PIN, PISTON	13	10
F12361	LEAD WIRE AND GROMMET			F250410	RING, RETAINING, PISTON		
	PACKAGE	7	13		PIN	13	9
F12362	STATOR PLATE W/CORE	7	9	F2706772	HOSE CLAMP	3	6
F12363	WEDGE SPRING	7	10	F27209-1	STUD, CARBURETOR	9	7
F1298	ROUND HD SCREW			F286132	HANDLE, STARTER ROPE	5	6
	W/LOCKWASHER	7	21	F2A332167	CARBURETOR ADAPTER		
F1341	NUT	17	27		W/STUDS, REED AND		
F1341	NUT	19	8		STOP	9	5
F1426	SCREW, HEX HD 1/4 - 20 X			F2A521016	ROD, CONNECTING		
	7/16	13	4		W/SCREWS AND		
F1445	SCREW, 1/4 - 14 X 3/8	17	33		BEARINGS	13	12
F1447	DRIVE SCREW, 2 X 3/16	17	7				
F1490	HEX NUT, 1/4 - 20	9	24				

PARTS INDEX

Part Number	Description	Pg.	Ref. No.	Part Number	Description	Pg.	Ref. No.
F2A521054	GEAR HOUSING ASSEMBLY	19	13	F521537	PLATE, PUMP, TOP	21	-
F31160-1	REED	9	4	F521537	PLATE, WATER PUMP	19	4
F318307	SEAL, DRIVESHAFT	19	12	F521552	SCREW, FLYWHEEL	7	1
F318372	PIN, CLUTCH	19	20	F521579	SEAL, SPLINE, CRANKSHAFT	13	15
F318504	GROMMET, CHOKE	9	35	F521661-1	PAD, SWIVEL FRICTION	17	25
F338618-1	SEAL	21	-	F521708	CARBURETOR COVER	9	28
F36634	SCREW, CONNECTING ROD	13	17	F521783	SEAL	19	11
F390563	PIN, PUMP DRIVE	19	10	F521811	FITTING, GAS TANK	3	5
F409521	CLUTCH	19	21	F521894	DECAL "OFF"	9	13
F409719	SPRING, CLUTCH	19	19	F521906	GASKET, CARBURETOR	9	9
F427249	RETAINING RING	3	3	F521906	GASKET, CARBURETOR	15	-
F459137	GRIP	7	17	F521908	GROUND WIRE	7	14
F468037-1	PIVOT BOLT	17	17	F525161	REED STOP	9	3
F468072-3	SWIVEL BRACKET - PORT	17	6	F525457	SCREW, 1/4 - 20 X 5/8	19	14
F468169	BEARING, SWIVEL BRACKET	17	28	F535097	FLYWHEEL	7	2
F468300	SPRING, REVERSE LOCK	17	19	F596	CHRYSLER OUTBOARD OIL	27	-
F468346	SHOCK MOUNT	17	29	F597	CHRYSLER OUTBOARD GEAR LUBE	27	-
F468349	REVERSE LOCK	17	20	F5H059	CHRYSLER OUTBOARD MULTI-PURPOSE GREASE	27	-
F468350	PIN, REVERSE LOCK	17	22	F601006	STUD	19	2
F46899-1	COVER, SHIFT COUPLING	17	5	F601078	BRACKET, STEERING HANDLE STOP	13	27
F50109	PLUG, GEAR HOUSING	19	30	F601079	HANDLE, STEERING	13	22
F521002	CAM	7	4	F601081	THROTTLE LEVER	7	16
F521013	BEARING, CRANKSHAFT, UPPER	13	19	F601248	DECAL (CHOKE)	9	25
F521015	PISTON	13	11	F601489	VALVE, FUEL SHUT-OFF	9	12
F521034-1	FUEL TANK	3	9	F601572	SWIVEL BRACKET - STARBOARD	17	24
F521061-6	CARBURETOR - COMPLETE	11	39	F601647	HANDLE	13	36
F521065	IMPELLER	19	5	F66480	STUD	17	11
F521065	IMPELLER, WATER PUMP	21	-	F7019	NUT, LOCK 1/4 - 20	13	26
F521118-1	SEAL, CRANKSHAFT, LOWER	13	16	F7026	STOP NUT 3/8 - 16	17	14
F521128	DRIVESHAFT	19	1	F8028	WASHER, PLAIN	13	1
F521146	SEAL, CRANKSHAFT, UPPER	13	20	F8039	PLAIN WASHER	17	15
F521159	GASKET, REED PLATE	15	-	F8060	INTERNAL TOOTH LOCKWASHER	11	40
F521168	GASKET, CARBURETOR ADAPTER	9	1	F8061	INTERNAL TOOTH LOCKWASHER	3	10
F521168	GASKET, CARBURETOR ADAPTER	15	-	F8074	WASHER	19	32
F521192	THROTTLE CAM	7	19	F8077	WASHER	19	31
F521244-1	WATER LINE STANDARD LEG	17	30	F8078	LOCKWASHER, INTERNAL TOOTH	9	27
F521251-3	GAS CAP COMPLETE (NOT SHOWN)	3	1	F8083	LOCKWASHER	19	9
F521261	LINE, WATER OUTLET	17	32	F8083	SPRING LOCKWASHER	17	26
F521266	GEAR, BEVEL PINION	19	23	F8537	SPRING PIN	17	13
F521279	GASKET, CYLINDER EXHAUST	13	14	F8559	PIN, DOWEL	13	31
F521279	GASKET, CYLINDER, EXHAUST	15	-	F901753	HOSE	3	7
F521296	RETAINER, PROPELLER SHAFT BEARING CAGE	19	15	F901938-1	SCREW, CYLINDER HEAD	13	2
F521305	SEAL, "O" RING	19	16	F90807	RETAINER, CHOKE	9	36
F521307	SEAL, PROPELLER SHAFT	19	17	FA28073-1	CLAMP SCREW W/FOOT AND STUD	17	12
F521342-1	SEAL, WATER LINE	17	31	FA324101	PIN, PROPELLER (PACK OF 3)	19	29
F521498	KEY, FLYWHEEL	7	3	FA341151	PLATE, EXHAUST	17	2
F521518	HEAD, CYLINDER	13	5	FA409098	SHAFT, PROPELLER	19	22
F521529	GASKET, CYLINDER HEAD	13	6	FA521023	GEAR, BEVEL	19	24
F521529	GASKET, CYLINDER HEAD	15	-	FA521298	CAGE, BEARING W/BEARING AND SEAL	19	18

PARTS INDEX

Part Number	Description	Pg.	Ref. No.	Part Number	Description	Pg.	Ref. No.
FA521735	SEAL, WATERLINE	19	-	39-818038A1	RING SET, PISTON (2	13	8
FA521735	SEAL, WATERLINE	19	6		RINGS)		
FA538395	PLATE, IDENTIFICATION W/SCREWS	17	8				
FA567241	BEARING ASSEMBLY, W/CAGE AND ROLLERS	13	13				
FA601010	CYLINDER ASSEMBLY W/CRANKCASE COVER, DOWEL PINS & SCREWS	13	7				
FA601060	BODY, WATER PUMP	19	-				
FA601060	BODY, WATER PUMP W/PLUG	19	7				
FA601396	DECAL, ENGINE COVER - STARBOARD W/LITERATURE	3	-				
FA601397	DECAL, ENGINE COVER - PORT W/LITERATURE	3	8				
FA601532	STERN BRACKET W/CLAMP SCREW & FOOT	17	16				
FC601010	SHORT BLOCK (NOT SHOWN)	13	-				
FC601054	GEAR HOUSING ASSEMBLY COMPLETE.	19	-				
FG1015	GASKET SET.	13	37				
FK1057	GEAR HOUSING SEAL KIT.	21	36				
FK1058	TUNE-UP KIT.	7	22				
FK1118	WATER PUMP KIT.	19	35				
FK12357	CONDENSER W/CLAMP	7	6				
FK601133	MOTOR LEG	17	3				
FK750-2	SPARKIE KIT	7	12				
FP332	PROPELLER	19	26				
FT1749	SNAP RING PLIERS	23	-				
FT2915	SEAL INSTALLER	24	-				
FT2961	LUBRICANT - RYKON GREASE #2EP	26	-				
FT2962-1	SEALANT - LOCTITE H, NON-HARDENING	26	-				
FT2963-1	SEALANT - LOCTITE D, HARDENING GRADE	26	-				
FT2987-1	LUBRICANT - ANTI-SEIZE	26	-				
FT2989	FLYWHEEL WEDGE	22	-				
FT2993	SPANNER WRENCH	22	-				
FT2997	RING COMPRESSOR	23	-				
FT8926	RING EXPANDER	23	-				
FT8929	CONNECTING ROD TOOL	23	-				
FT8935	SEALANT PRIMER - GRADE T	26	-				
FT8936	SEALANT - LOCTITE RETAINING COMPOUND #75	26	-				
FT8948-1	PULLER	24	-				
FT8950	LEAKAGE TESTER	25	-				
FT8969	LUBRICANT - LPSI	26	-				
FT8983	SEALANT - RTV	26	-				
FT8998	KNOCK-OFF SCREW	22	-				
T8974	BREAKER POINT TENSION GAUGE	25	-				
11-817752A1	NUT, PROPELLER W/COTTER PIN	19	27				
33-82370M	SPARK PLUG (L-86)	13	3				